

V&V Reference Report

L2 ASCDS Version : 10.4.3.1

Observation 17867 - L2 Version 1
Chandra X-Ray Center

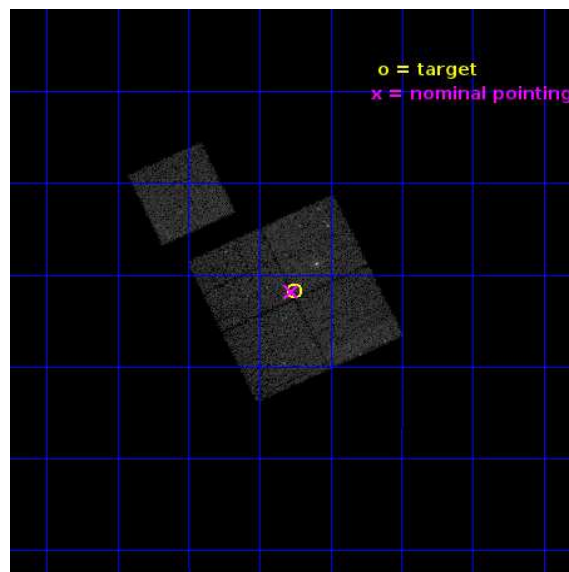
L2 Processing Date : Feb 5 2016

Contents

1	Front	2
2	OBI	3
2.1	OBI	3
2.1.1	Images	3
2.1.2	Bias	3
2.1.3	Parameters	4
2.1.4	Events	4
2.2	Compared Parameters	5
2.3	Aspect	6
2.4	Star Slots	9
2.4.1	Slot 3	9
2.4.2	Slot 4	10
2.4.3	Slot 5	11
2.4.4	Slot 6	12
2.4.5	Slot 7	13
2.5	FID Slots	14
2.5.1	Slot 0	14
2.5.2	Slot 1	15
2.5.3	Slot 2	16
A	Summary	17
A.1	Status	17
A.2	Comments	17

1 Front

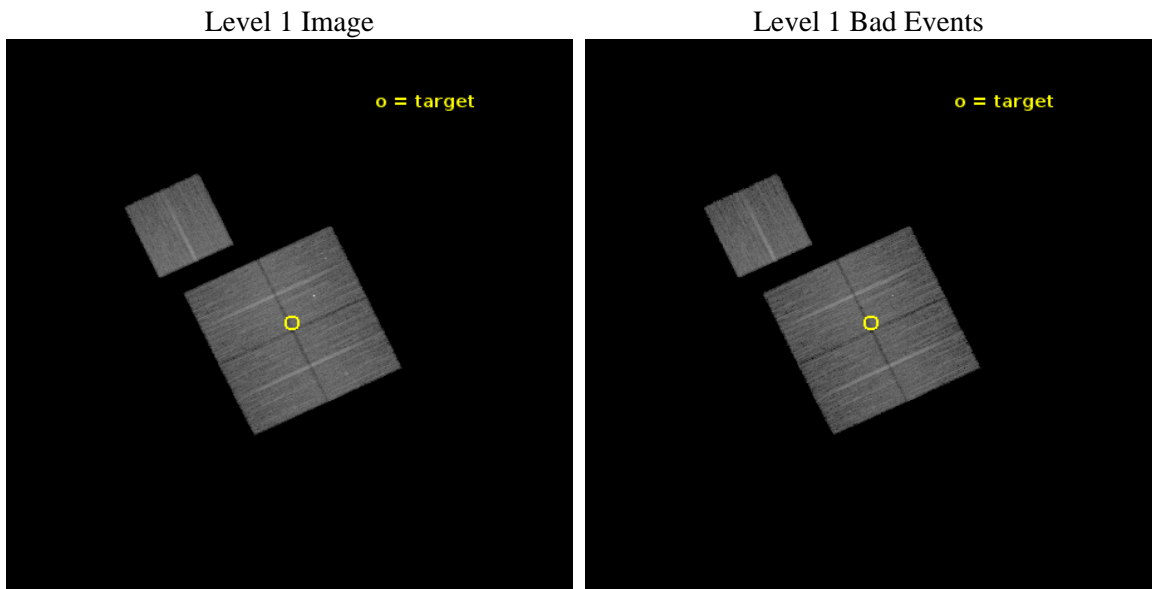
seq_num	401799	Sequence number
obs_id	17867	Observation id
title	X-ray Observations of New Gamma-Ray Bright Galactic Compact Binaries	
observer	Prof. Jay Strader	Principal investigator
object	3FGL J0827.2-0711	Source name
dtcycle	0	
cycle	P	events from which exps? Prim/Second/Both
ra_targ	126.812417	Observer's specified target RA [deg]
dec_targ	-7.196694	Observer's specified target Dec [deg]
ra_nom	126.81904787492	Nominal RA [deg]
dec_nom	-7.1971533494392	Nominal Dec [deg]
roll_nom	334.50696700432	Nominal Roll [deg]
revision	1	Processing version of data
ontime	22074.429077744	Sum of GTIs [s]
livetime	21786.010410885	Livetime [s]
ontime0	22074.305937648	Sum of GTIs [s]
ontime1	22077.488057852	Sum of GTIs [s]
ontime2	22074.388057828	Sum of GTIs [s]
ontime3	22074.429077744	Sum of GTIs [s]
ontime6	22077.405977845	Sum of GTIs [s]
l2events	70651	Number of level 2 events



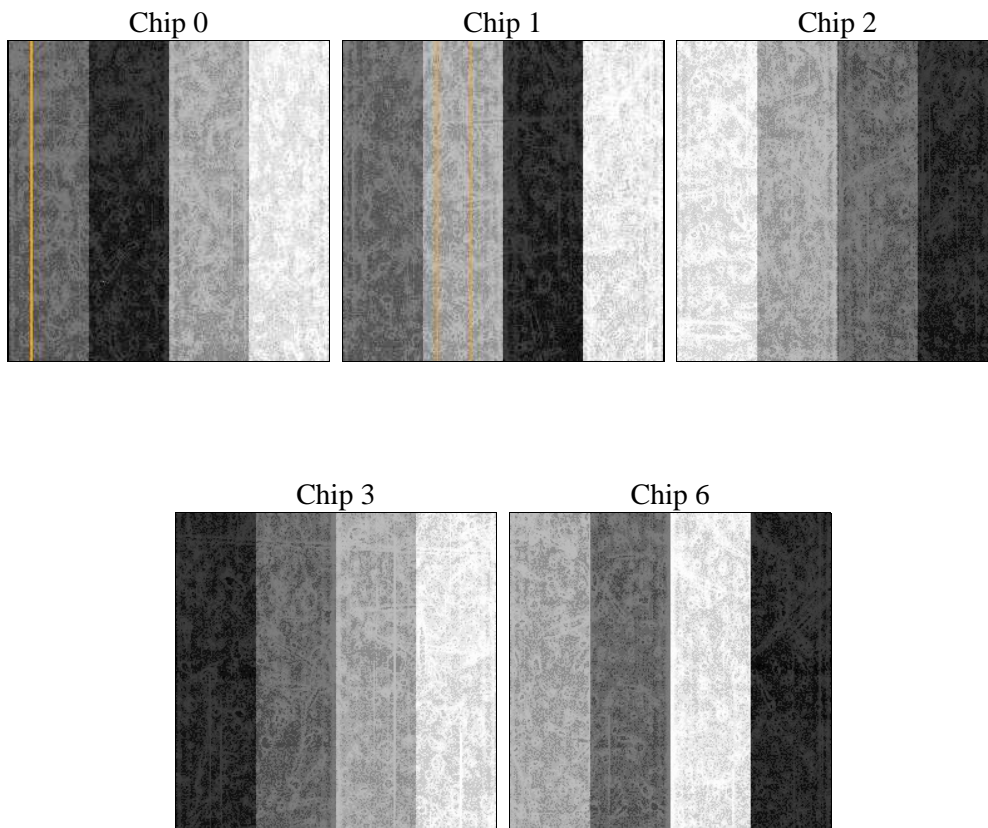
2 OBI

2.1 OBI

2.1.1 Images



2.1.2 Bias



2.1.3 Parameters

obi_num	1	Obi number	sched_exp_time	22000.000000	[s] Scheduled observation exposure time
ascdsver	10.4.3.1	Processing system revision	ontime	22074.429077744	Sum of GTIs [s]
caldbver	4.7.0	 	ontime0	22074.305937648	Sum of GTIs [s]
date	2016-02-06T02:32:21	Date and time of file creation	ontime1	22077.488057852	Sum of GTIs [s]
revision	1	Processing version of data	ontime2	22074.388057828	Sum of GTIs [s]
			ontime3	22074.429077744	Sum of GTIs [s]
			ontime6	22077.405977845	Sum of GTIs [s]
			l1events	652881	Number of level 1 events

2.1.4 Events

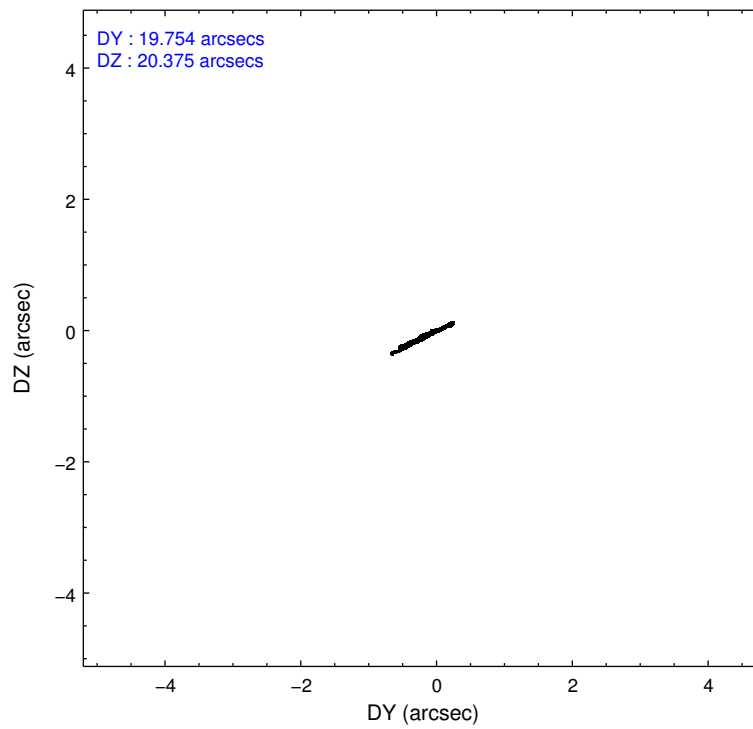
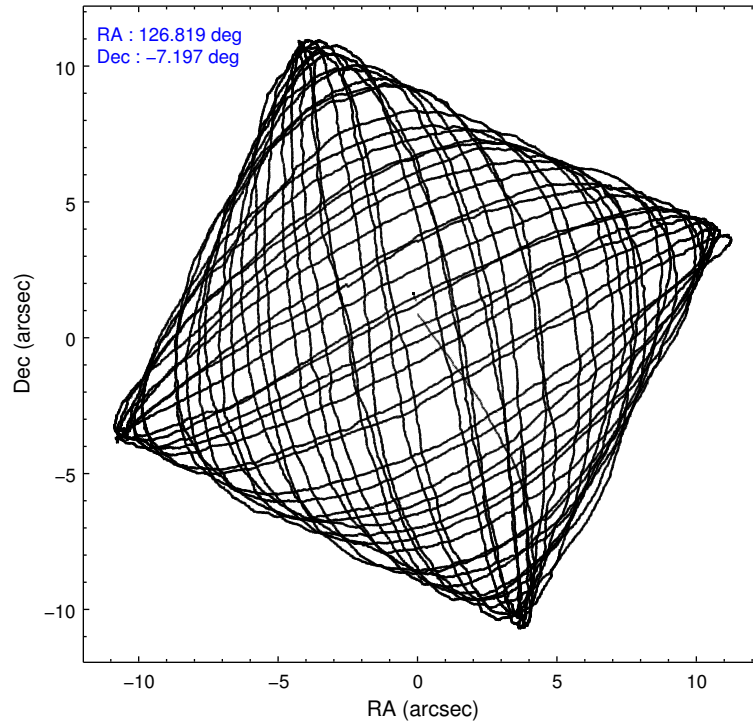
	ccd 0	ccd 1	ccd 2	ccd 3	ccd 6
level 1 events	123433	127026	131570	138156	132696
rejected events	108896	110503	117370	115954	117682
rejected %	88%	86%	89%	83%	88%

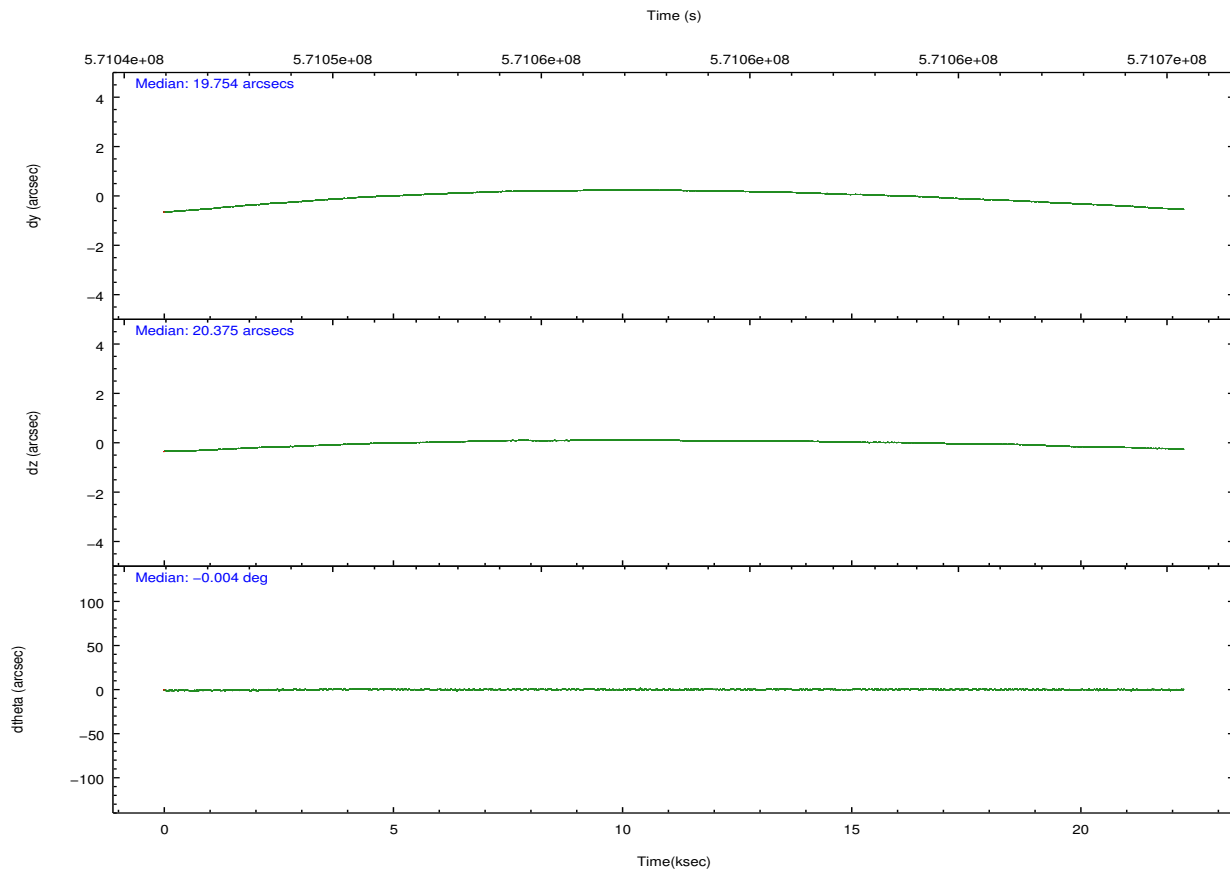
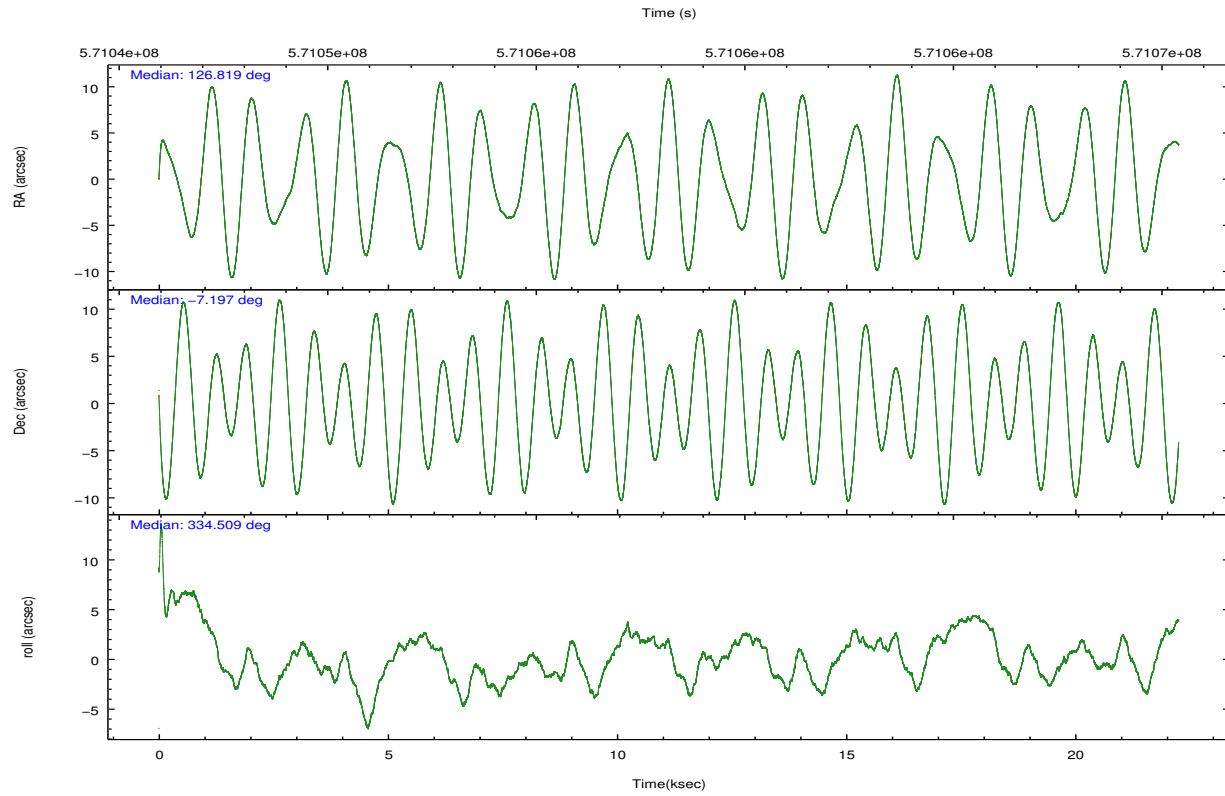
	ccd 0	ccd 1	ccd 2	ccd 3	ccd 6
grade 0 events	4912	5663	4902	10798	4950
	3%	4%	3%	7%	3%
grade 1 events	66	67	72	632	67
	0%	0%	0%	0%	0%
grade 2 events	3594	4038	3613	4383	3452
	2%	3%	2%	3%	2%
grade 3 events	1493	1545	1418	1965	1524
	1%	1%	1%	1%	1%
grade 4 events	1433	1580	1448	1846	1530
	1%	1%	1%	1%	1%
grade 5 events	5594	6258	5281	6774	6365
	4%	4%	4%	4%	4%
grade 6 events	3108	3701	2821	3214	3561
	2%	2%	2%	2%	2%
grade 7 events	103233	104174	112015	108544	111247
	83%	82%	85%	78%	83%

2.2 Compared Parameters

Parameter	Planned	Actual	Parameter	Planned	Actual
Instrument	ACIS	ACIS	Obspar format version number	7	7
Detector	ACIS-01236	ACIS-01236	Obspar file type	PREDICTED	ACTUAL
Grating	NONE	NONE	Obspar update status	NONE	UPDATED
Data mode	VFAINT	VFAINT	CCD I0 on	Y	Y
Observation mode	POINTING	POINTING	CCD I1 on	Y	Y
[deg] Pointing RA	126.791310	126.8190478749218	CCD I2 on	Y	Y
[deg] Pointing Dec	-7.199403	-7.197153349439176	CCD I3 on	Y	Y
[deg] Pointing Roll	334.294809	334.5069670043201	CCD S0 on	N	N
[mm] SIM focus pos	-0.782348	-0.7809083437167272	CCD S1 on	N	N
[mm] SIM defocus	0	0.001439871863259334	CCD S2 on	O2	Y
[mm] SIM translation stage pos	-233.592463	-233.5874344608287	CCD S3 on	O1	N
[mm] SIM translation stage offset	0	-0.005018542100998502	CCD S4 on	N	N
[s] Observation start time (MET)	571047283.184000	571046312.62573	CCD S5 on	N	N
Observation start date	2016-02-05T08:13:35	2016-02-05T07:58:32	Number of optional ACIS chips dropped	1	1
[s] Observation end time (MET)	571069283.184000	571070153.10208	On-chip summing requested	N	N
Observation end date	2016-02-05T14:20:15	2016-02-05T14:35:53	Subarray requested	NONE	NONE
Read mode	TIMED	TIMED	Alternating exposures requested	N	N
			[s] Primary exposure time	0.000000	3.1

2.3 Aspect





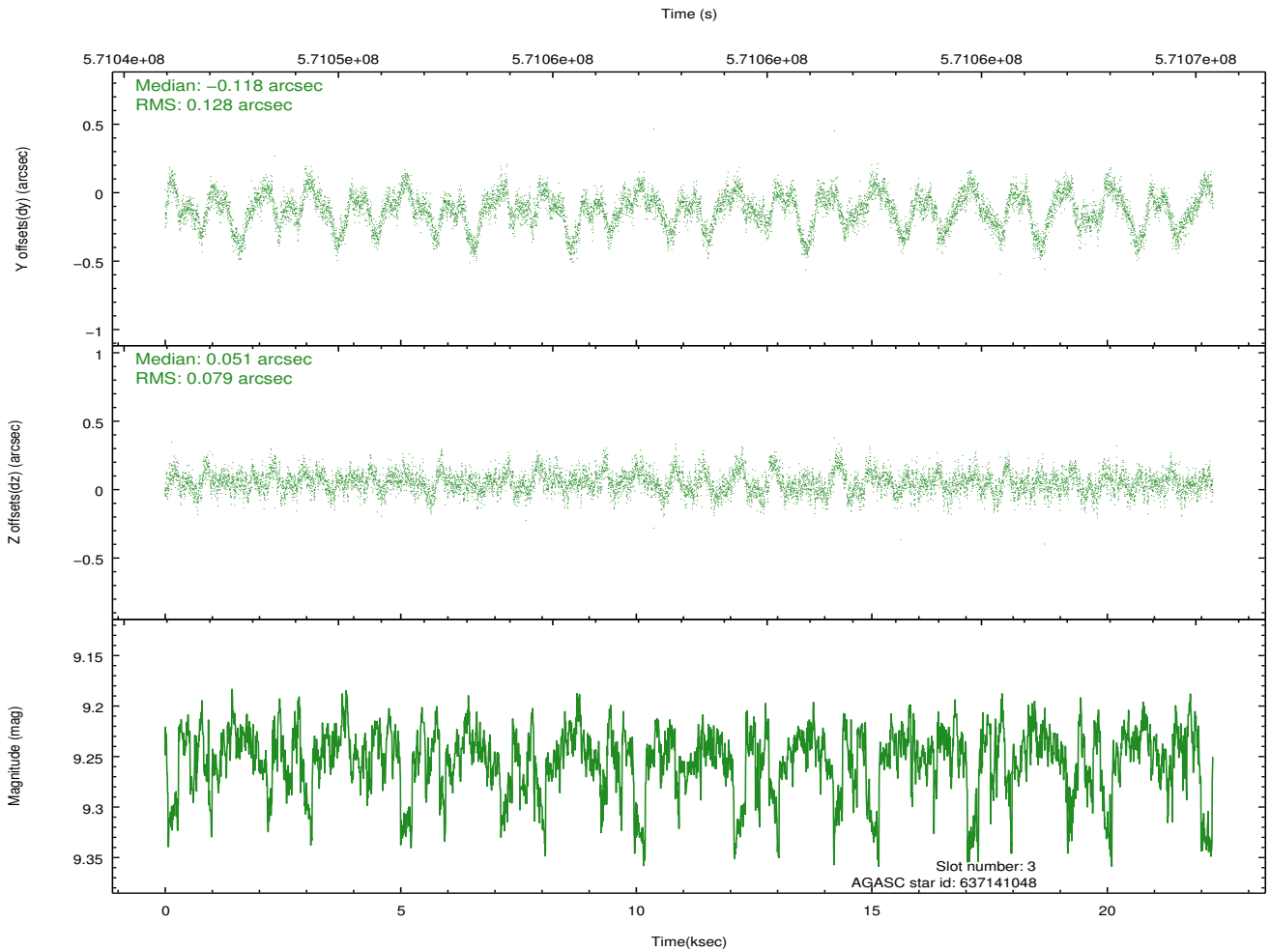
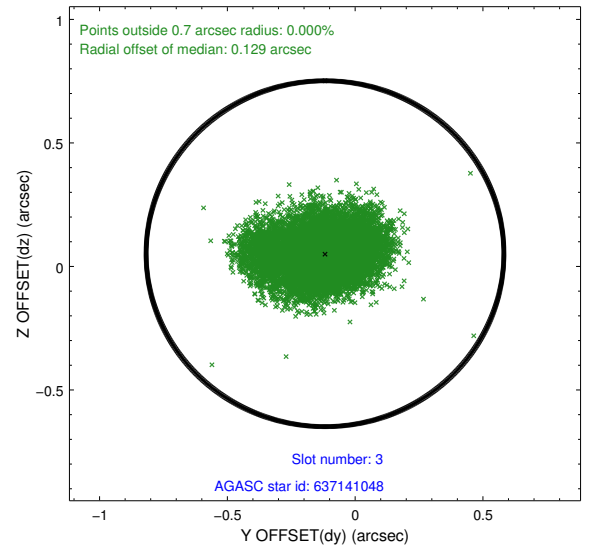
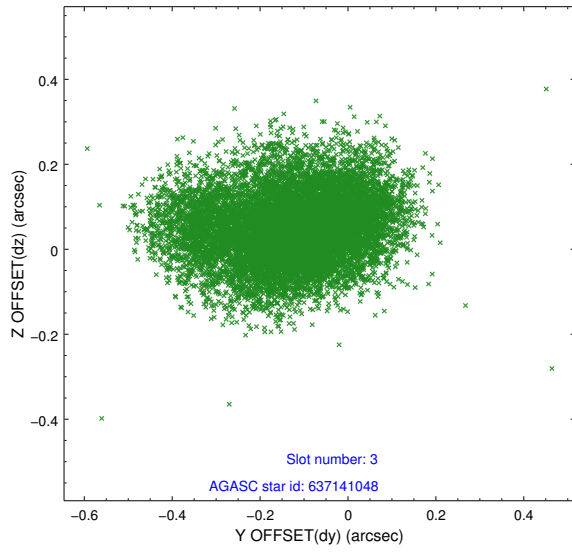
Slot Statistics

slot	status	used	id	mag	n_pts	med_dy	med_dz	dr1	dr2	ra	dec	mean_y	mean_z
0	FID		ACIS-I-1	7.26	5428	0.085	-0.066	0.010	0.019	0.000000	0.000000	919.76	-844.10
1	FID		ACIS-I-5	7.25	5427	-0.383	0.033	0.009	0.016	0.000000	0.000000	-1828.81	1053.29
2	FID		ACIS-I-6	7.27	5428	0.207	0.102	0.009	0.015	0.000000	0.000000	385.15	1698.13
3	GUIDE	used	637141048	9.25	10843	-0.118	0.051	0.161	0.263	127.462654	-7.078875	1973.51	1429.89
4	GUIDE	used	637143216	7.02	10853	-0.084	-0.013	0.084	0.132	126.941738	-7.220354	516.87	165.28
5	GUIDE	used	637151936	7.79	10852	-0.096	-0.055	0.101	0.174	126.594908	-6.472968	-1767.37	2051.76
6	GUIDE	used	637152496	9.07	10846	0.075	-0.130	0.125	0.200	126.870796	-6.559955	-742.42	2197.77
7	GUIDE	used	637152336	9.13	10848	0.232	0.145	0.132	0.211	126.303417	-6.721622	-2317.26	793.02

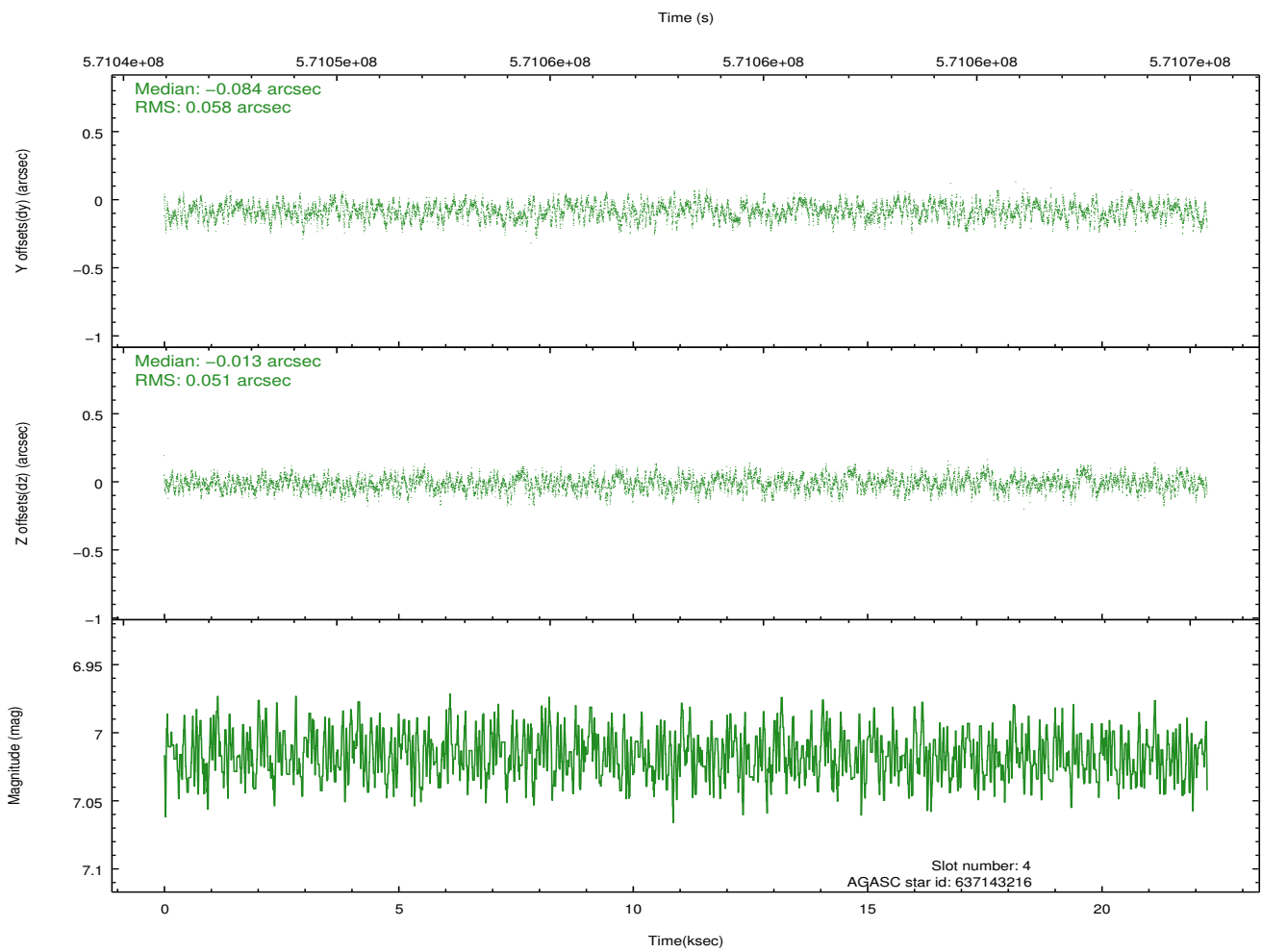
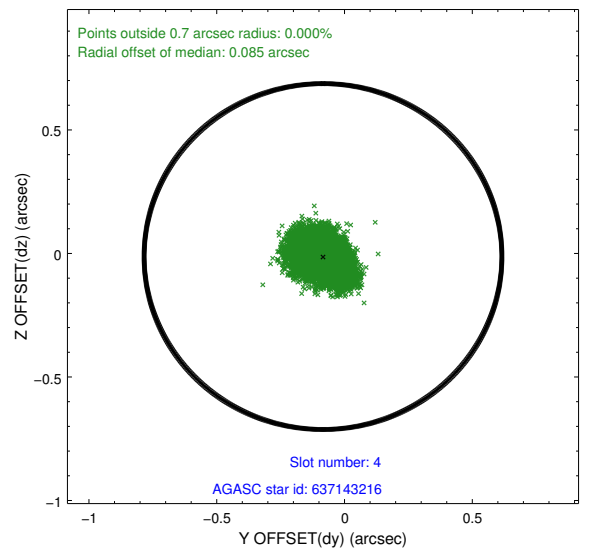
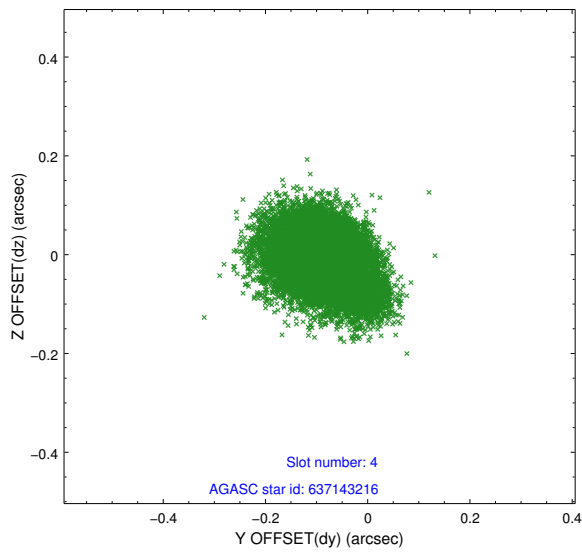
∞

2.4 Star Slots

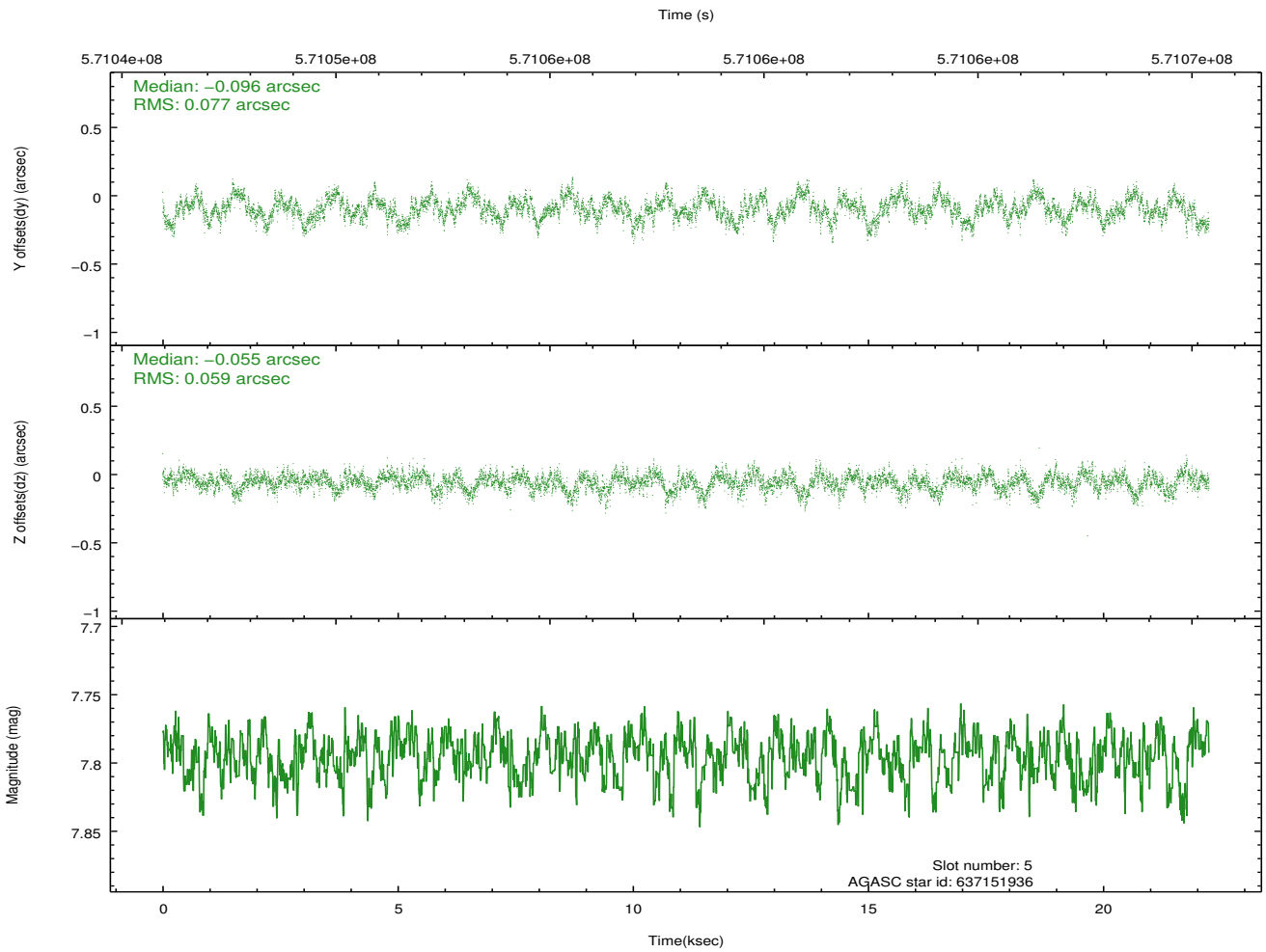
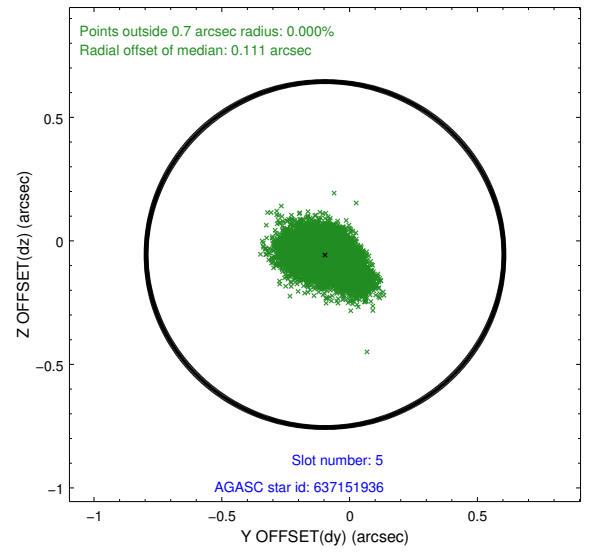
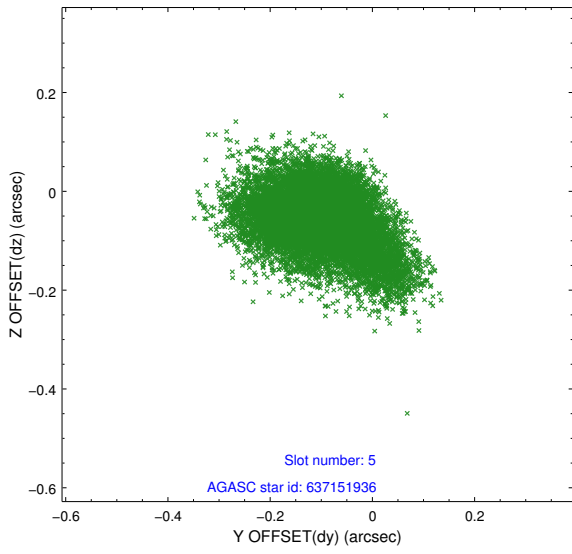
2.4.1 Slot 3



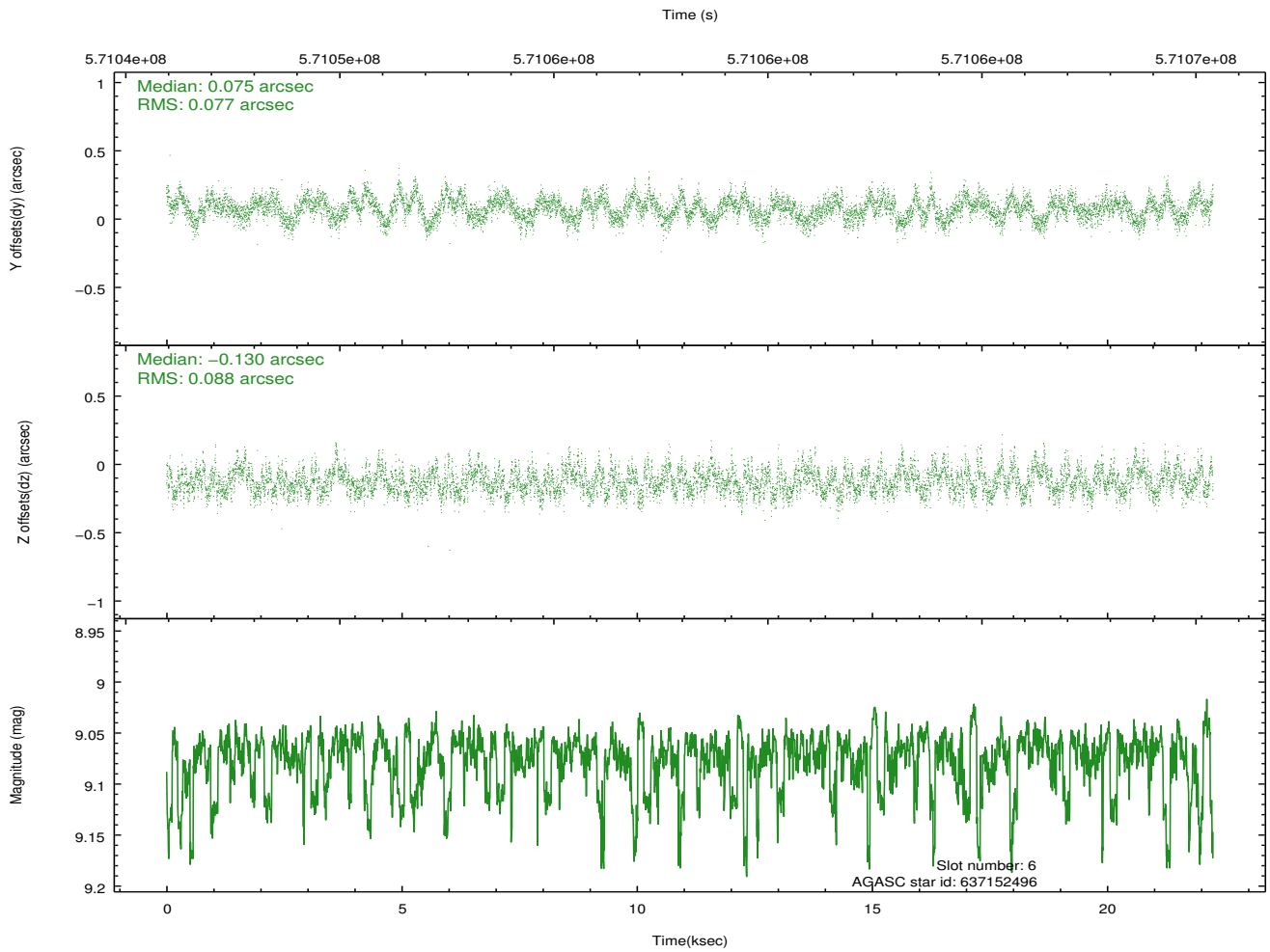
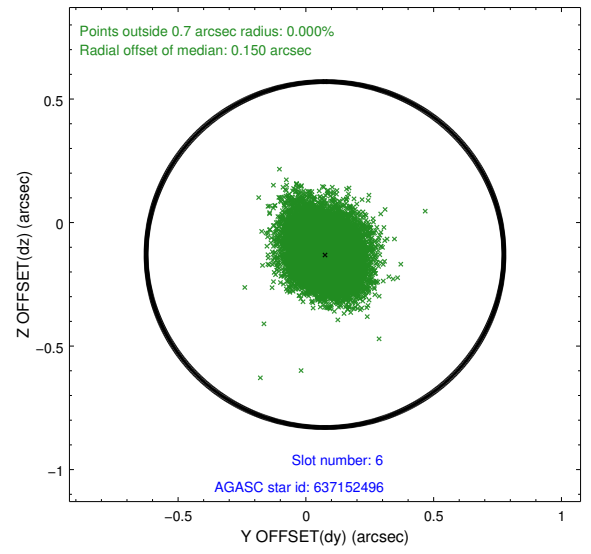
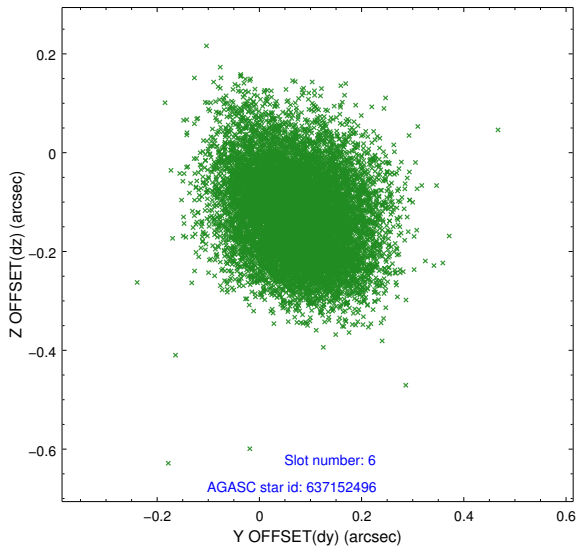
2.4.2 Slot 4



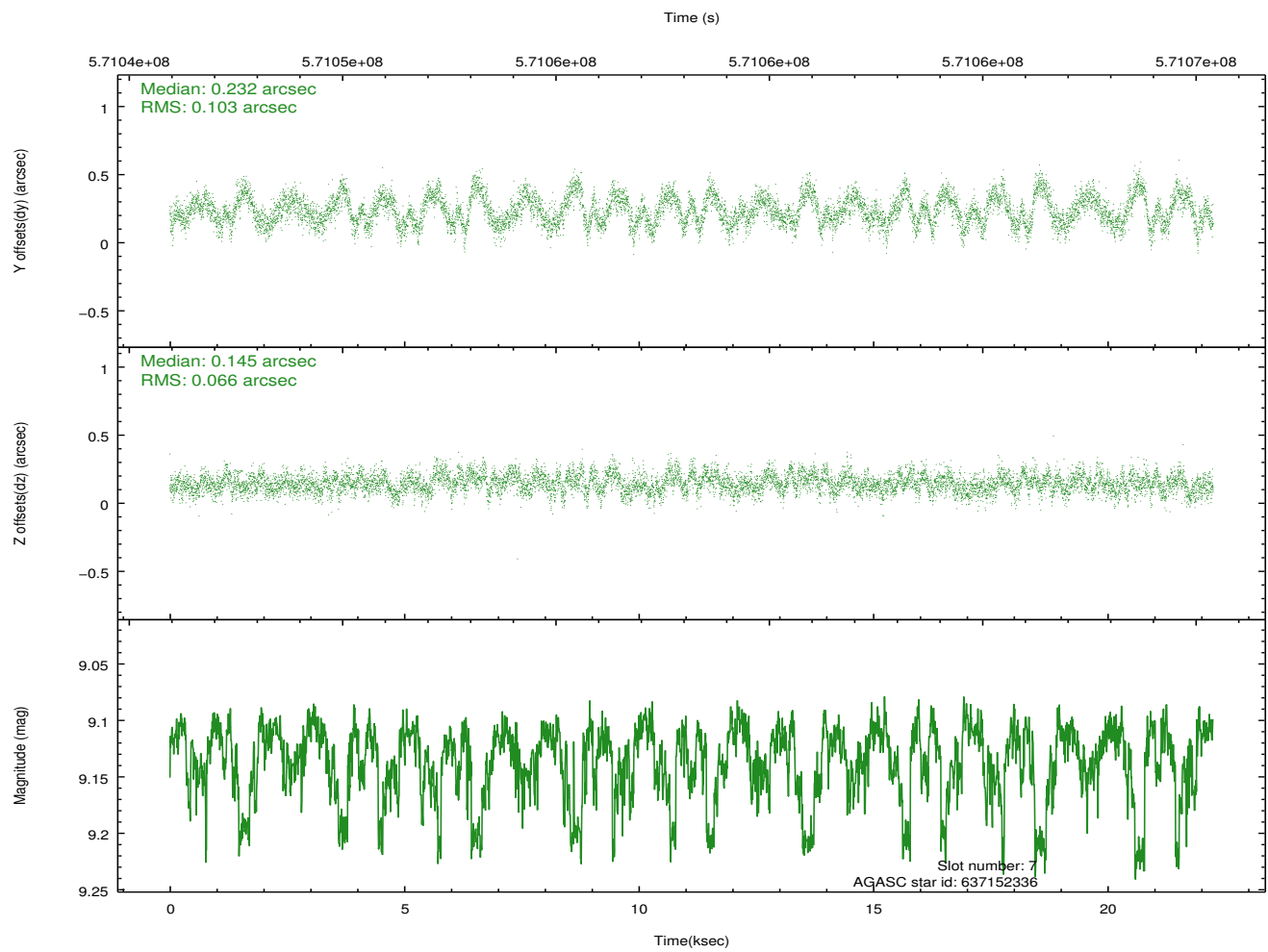
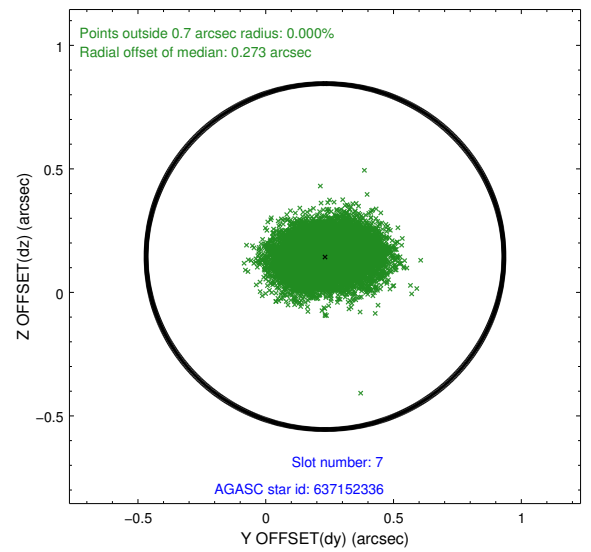
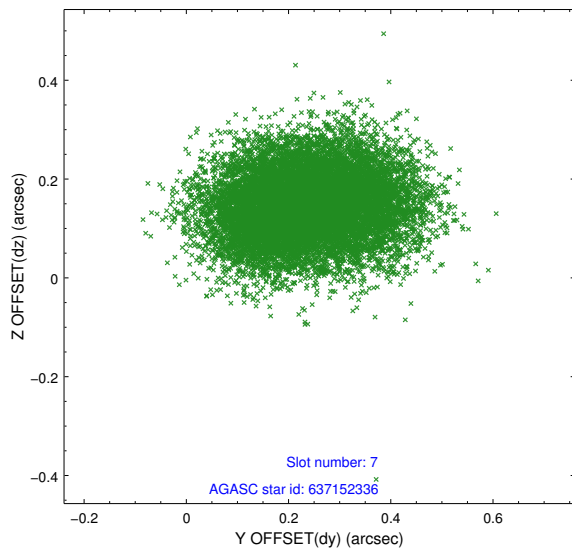
2.4.3 Slot 5



2.4.4 Slot 6

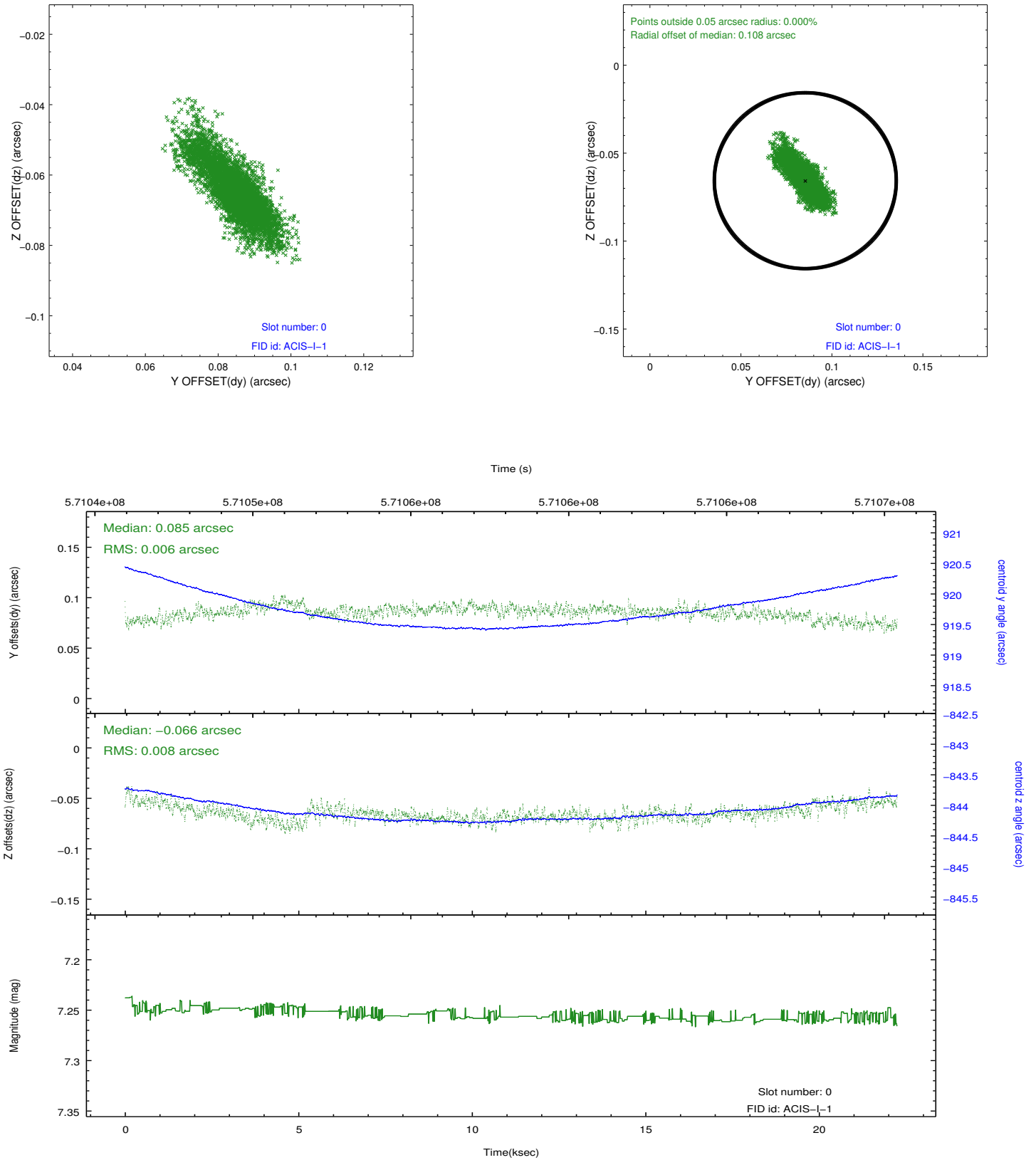


2.4.5 Slot 7

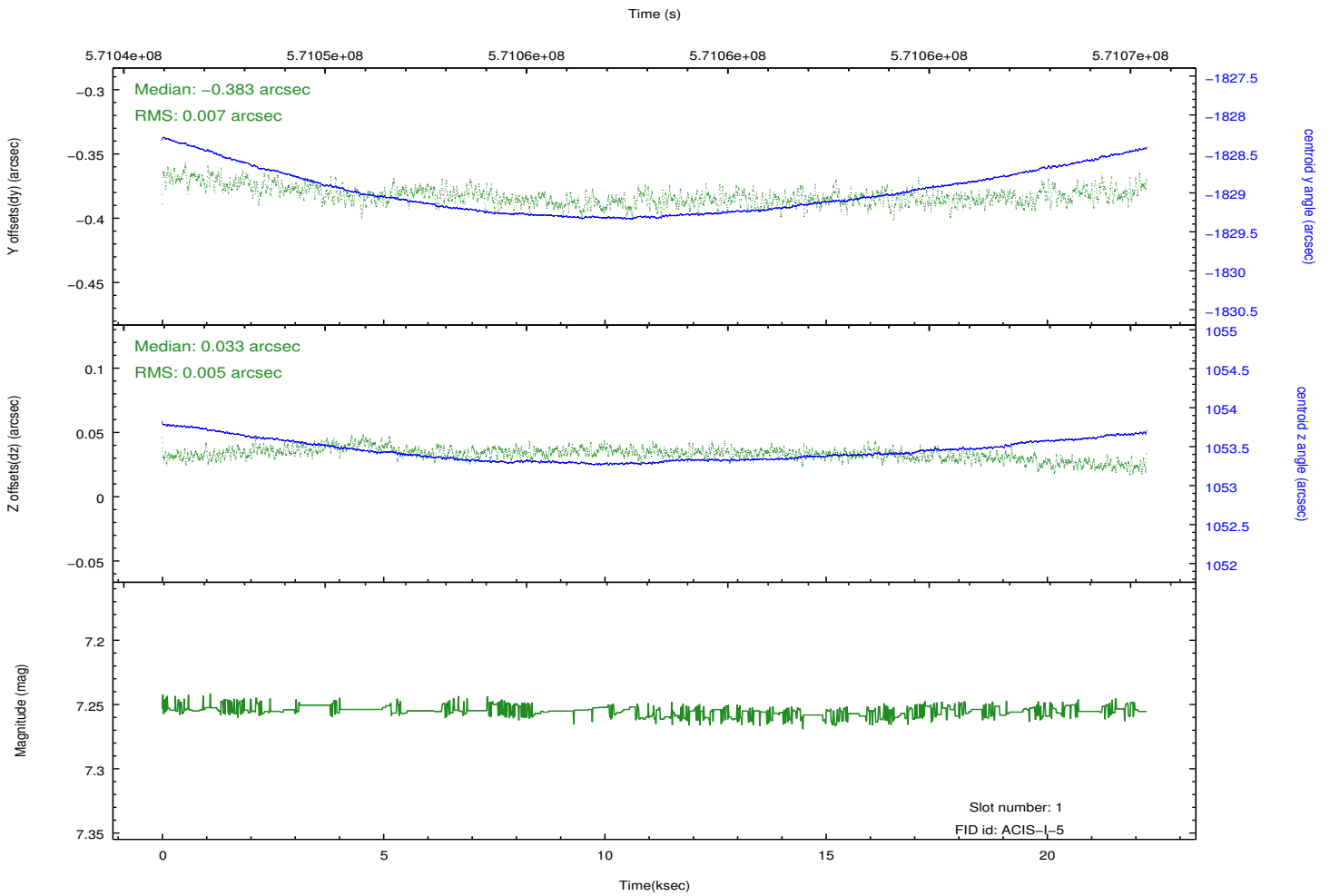
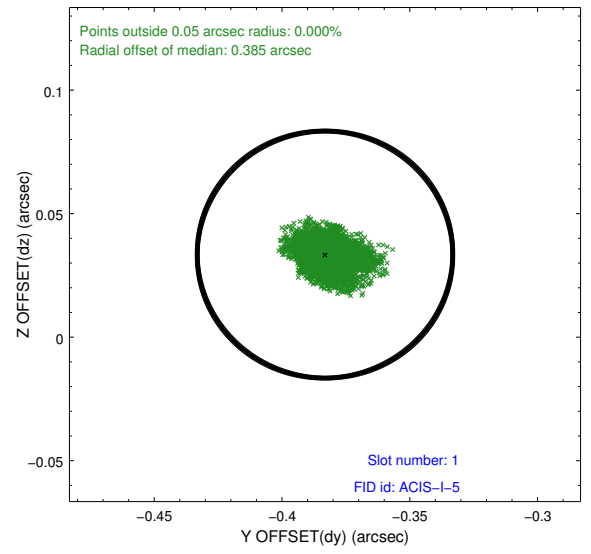
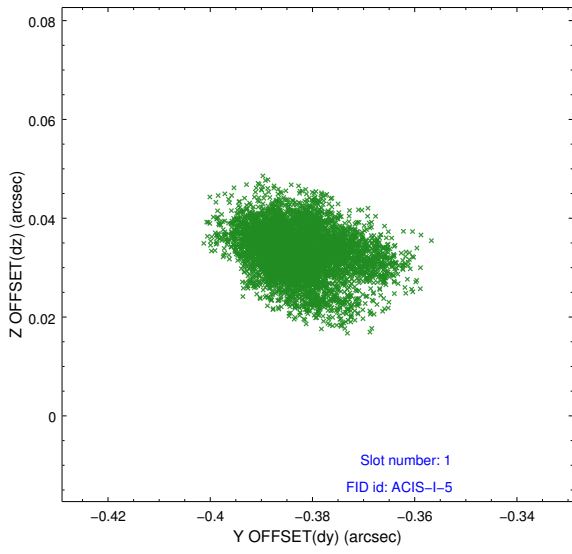


2.5 FID Slots

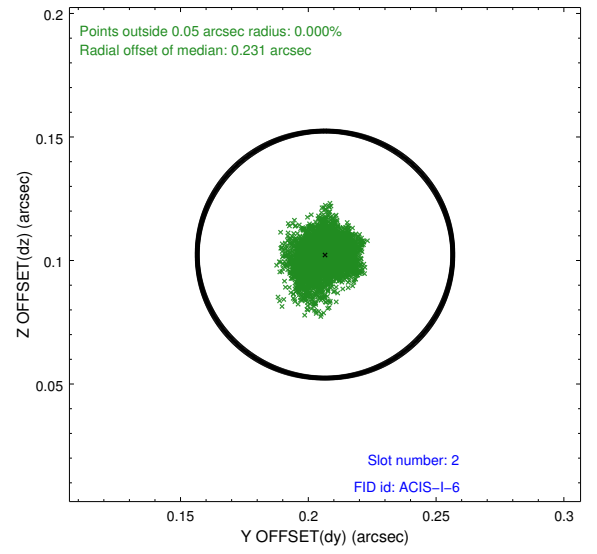
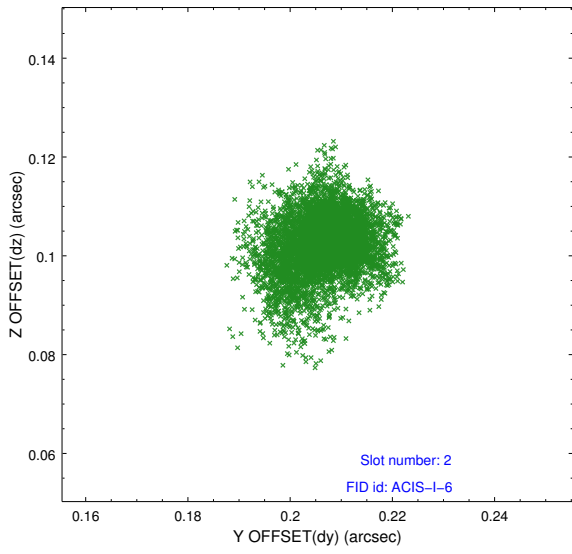
2.5.1 Slot 0



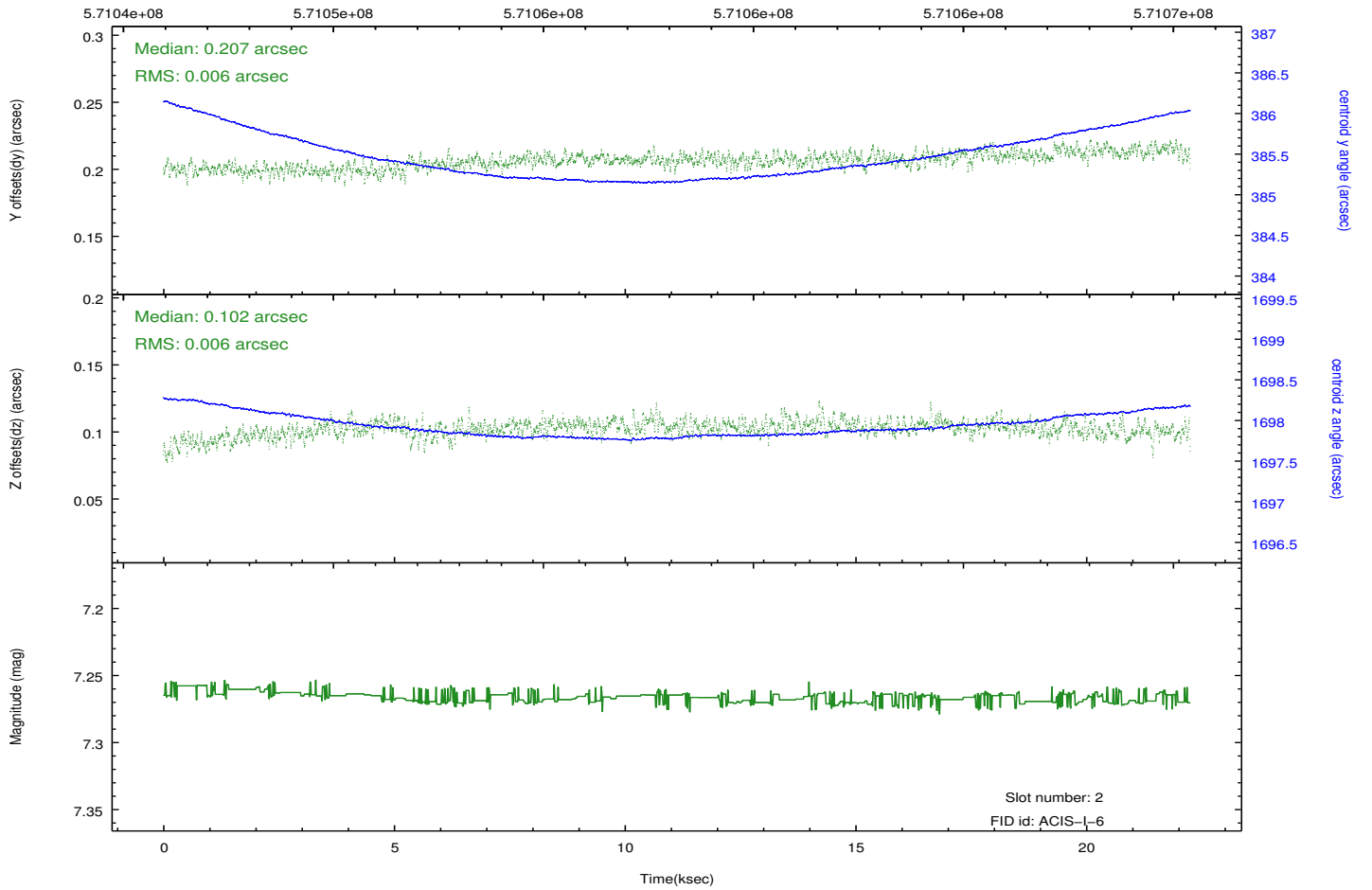
2.5.2 Slot 1



2.5.3 Slot 2



Time (s)



A Summary

A.1 Status

V&V Scientist	Jen Lauer
V&V Date (YYYY-MM-DD)	2016.02.06
V&V Edition	1
V&V Disposition and Status	OK
V&V Charge Time	22.074429077744

A.2 Comments

Optional chip S3 not included.