

# V&V Reference Report

## L2 ASCDS Version : 10.4.3

Observation 18206 - L2 Version 1  
Chandra X-Ray Center

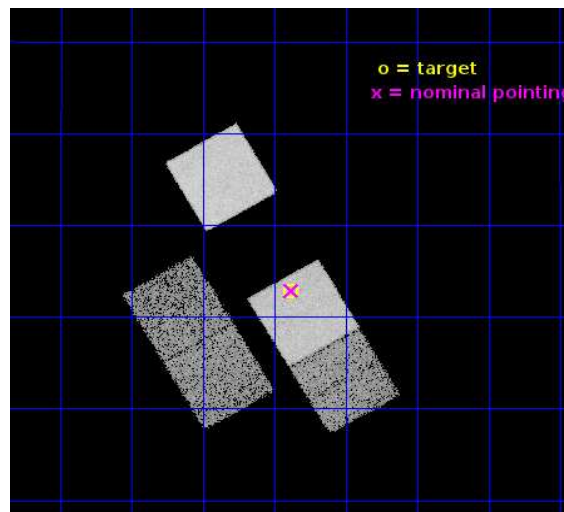
L2 Processing Date : Dec 22 2015

## Contents

<b>1</b>	<b>Front</b>	<b>2</b>
<b>2</b>	<b>OBI</b>	<b>3</b>
2.1	OBI . . . . .	3
2.1.1	Images . . . . .	3
2.1.2	Bias . . . . .	3
2.1.3	Parameters . . . . .	4
2.1.4	Events . . . . .	4
2.2	Compared Parameters . . . . .	5
2.3	Aspect . . . . .	6
2.4	Star Slots . . . . .	9
2.4.1	Slot 3 . . . . .	9
2.4.2	Slot 4 . . . . .	10
2.4.3	Slot 5 . . . . .	11
2.4.4	Slot 6 . . . . .	12
2.4.5	Slot 7 . . . . .	13
2.5	FID Slots . . . . .	14
2.5.1	Slot 0 . . . . .	14
2.5.2	Slot 1 . . . . .	15
2.5.3	Slot 2 . . . . .	16
<b>A</b>	<b>Summary</b>	<b>17</b>
A.1	Status . . . . .	17
A.2	Comments . . . . .	17

# 1 Front

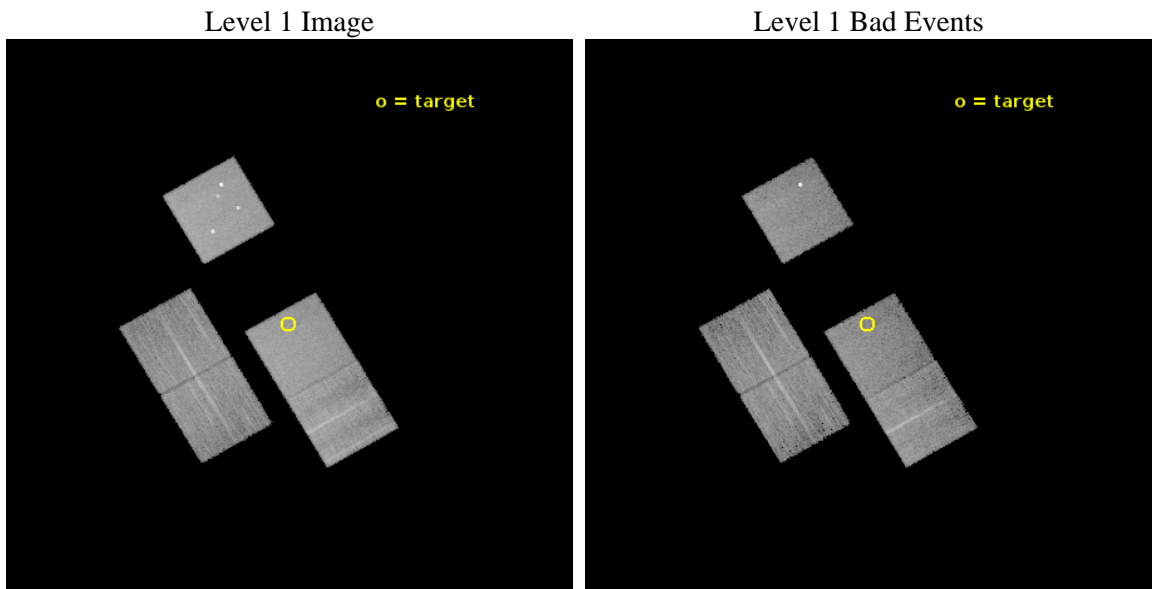
seq_num	703267	Sequence number
obs_id	18206	Observation id
title	Discovery of extreme quasar wind candidates at high redshift	Propo
observer	Dr. Nadia Zakamska	Principal investigator
object	SDSSJ0826+0542	Source name
dtycle	0	&#160
cycle	P	events from which exps? Prim/Second/Both
ra_targ	126.7225	Observer's specified target RA [deg]
dec_targ	5.713139	Observer's specified target Dec [deg]
ra_nom	126.72040248457	Nominal RA [deg]
dec_nom	5.7142804337658	Nominal Dec [deg]
roll_nom	59.789492590799	Nominal Roll [deg]
revision	1	Processing version of data
ontime	15058.46180594	Sum of GTIs [s]
livetime	14861.711916567	Livetime [s]
ontime2	15058.297645926	Sum of GTIs [s]
ontime3	15058.379725933	Sum of GTIs [s]
ontime5	15058.420765996	Sum of GTIs [s]
ontime7	15058.46180594	Sum of GTIs [s]
ontime8	15058.338685989	Sum of GTIs [s]
l2events	136023	Number of level 2 events



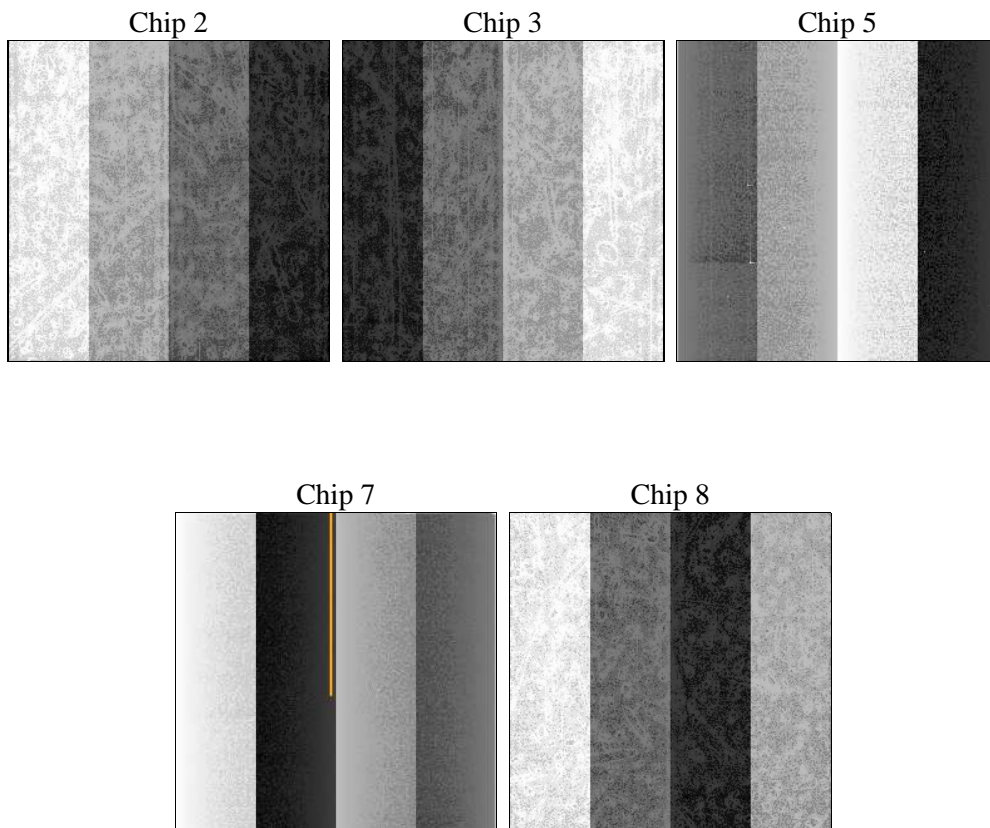
## 2 OBI

### 2.1 OBI

#### 2.1.1 Images



#### 2.1.2 Bias



### 2.1.3 Parameters

obi_num	0	Obi number	sched_exp_time	15000.000000	[s] Scheduled observation exposure time
ascdsver	10.4.3	Processing system revision	ontime	15058.46180594	Sum of GTIs [s]
caldbver	4.7.0	&#160	ontime2	15058.297645926	Sum of GTIs [s]
date	2015-12-22T20:13:24	Date and time of file creation	ontime3	15058.379725933	Sum of GTIs [s]
revision	1	Processing version of data	ontime5	15058.420765996	Sum of GTIs [s]
			ontime7	15058.46180594	Sum of GTIs [s]
			ontime8	15058.338685989	Sum of GTIs [s]
			l1events	534377	Number of level 1 events

### 2.1.4 Events

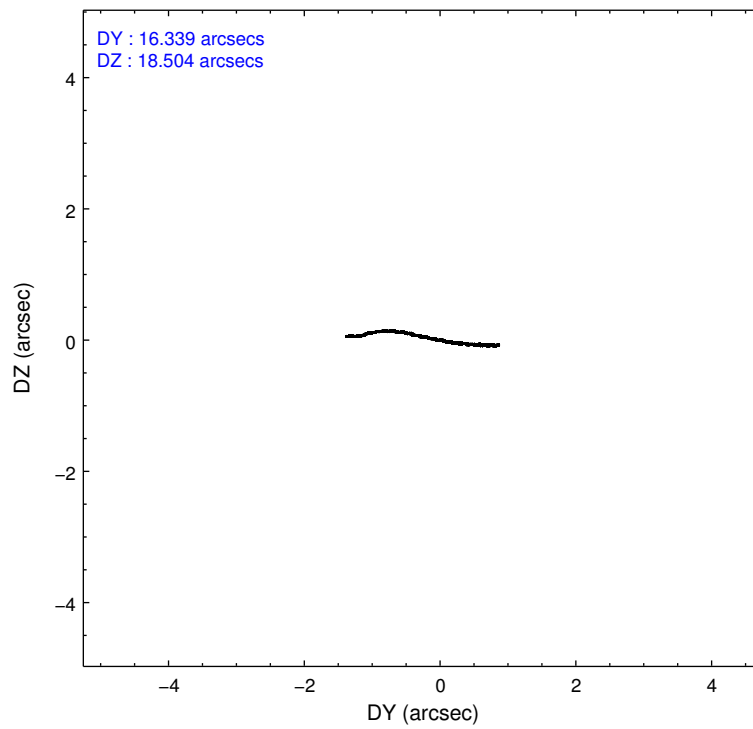
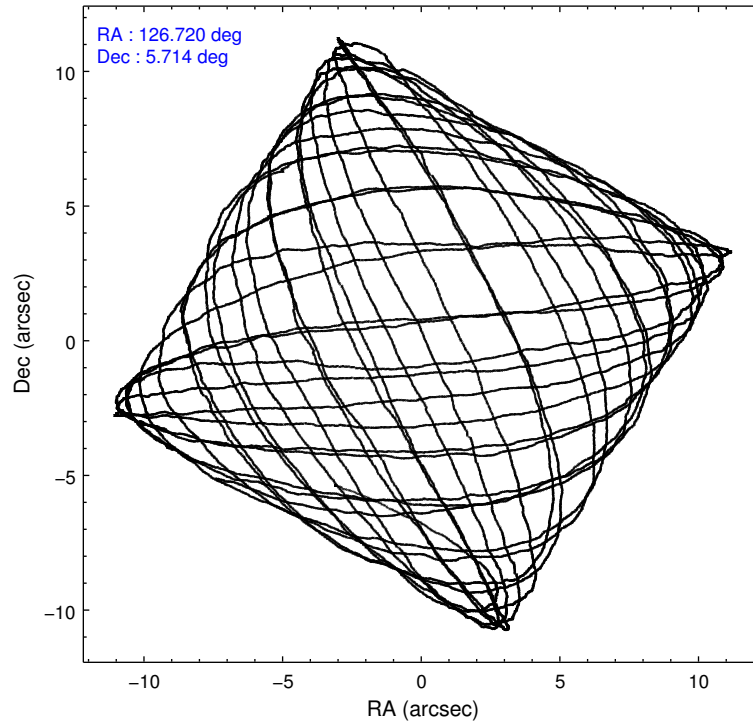
	ccd 2	ccd 3	ccd 5	ccd 7	ccd 8
level 1 events	80284	82047	145812	112838	113396
rejected events	71142	72936	75586	63992	82710
rejected %	88%	88%	51%	56%	72%

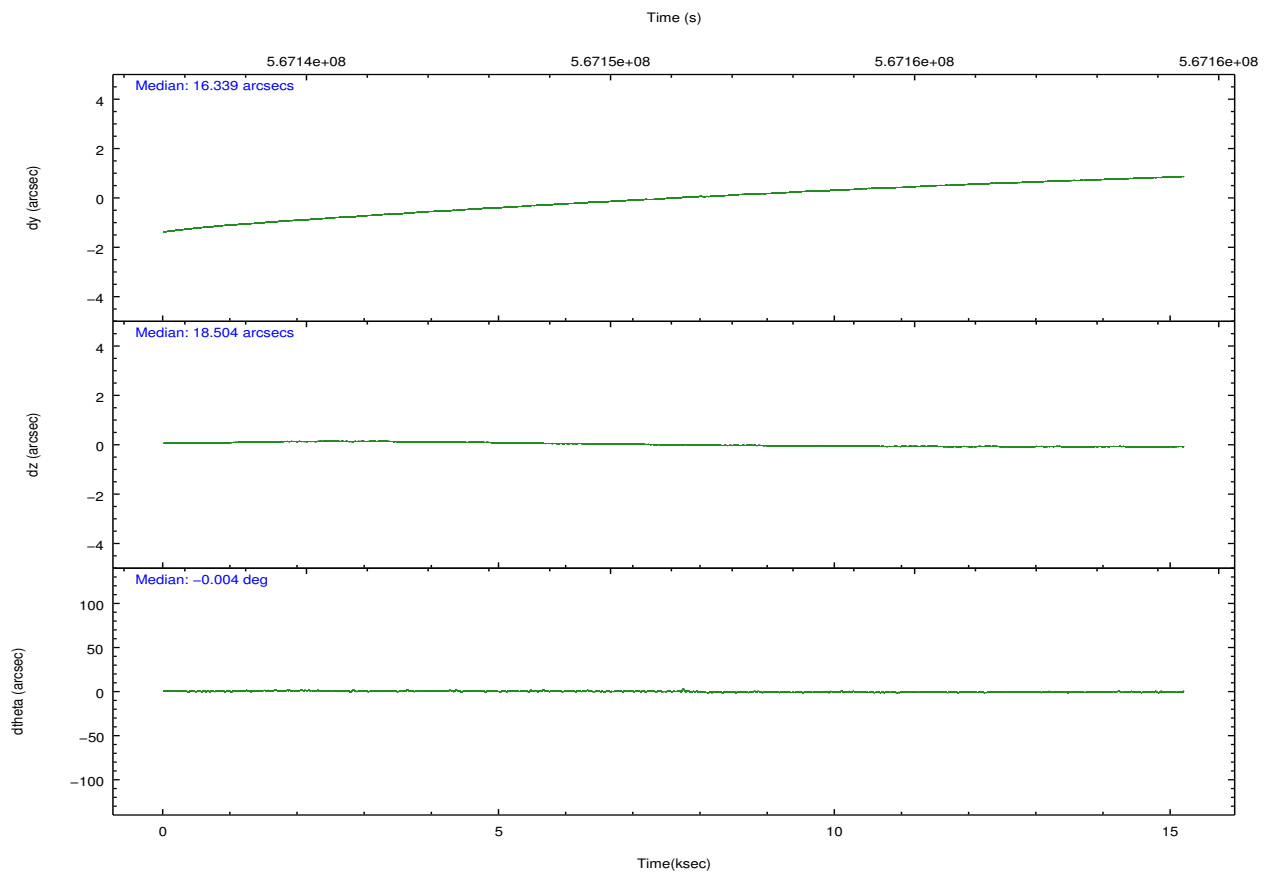
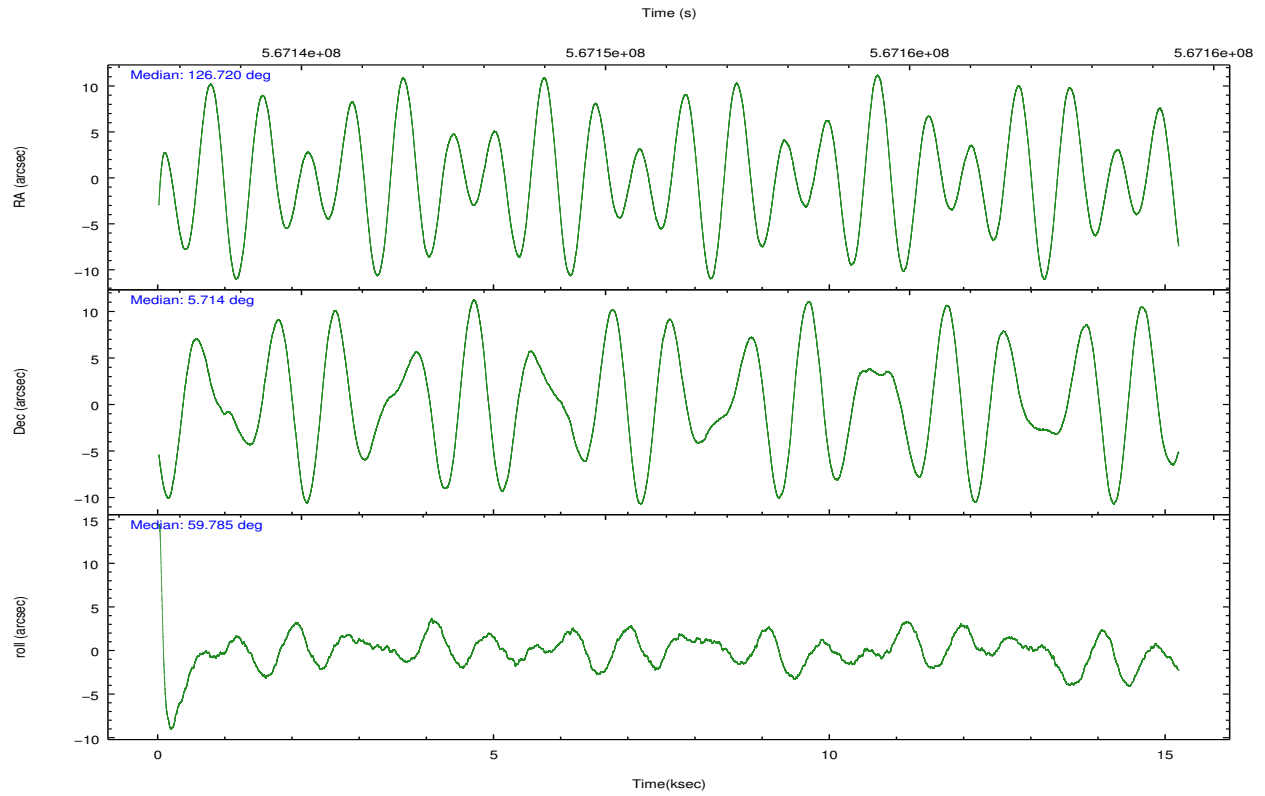
	ccd 2	ccd 3	ccd 5	ccd 7	ccd 8
grade 0 events	3202	3132	8956	4218	9020
	3%	3%	6%	3%	7%
grade 1 events	46	43	254	139	79
	0%	0%	0%	0%	0%
grade 2 events	2276	2020	20891	10184	7446
	2%	2%	14%	9%	6%
grade 3 events	923	974	2132	4096	3144
	1%	1%	1%	3%	2%
grade 4 events	957	1003	2047	4035	2974
	1%	1%	1%	3%	2%
grade 5 events	3482	4212	10230	11681	6282
	4%	5%	7%	10%	5%
grade 6 events	1789	1986	36231	26339	8105
	2%	2%	24%	23%	7%
grade 7 events	67609	68677	65071	52146	76346
	84%	83%	44%	46%	67%

## 2.2 Compared Parameters

Parameter	Planned	Actual	Parameter	Planned	Actual
Instrument	ACIS	ACIS	Obspar format version number	7	7
Detector	ACIS-23578	ACIS-23578	Obspar file type	PREDICTED	ACTUAL
Grating	NONE	NONE	Obspar update status	NONE	UPDATED
Data mode	VFAINT	VFAINT	CCD I0 on	N	N
Observation mode	POINTING	POINTING	CCD I1 on	N	N
[deg] Pointing RA	126.720668	126.7204024845672	CCD I2 on	O2	Y
[deg] Pointing Dec	5.686859	5.7142804337658	CCD I3 on	O1	Y
[deg] Pointing Roll	59.632817	59.7894925907987	CCD S0 on	N	N
[mm] SIM focus pos	-0.684267	-0.6828225247311905	CCD S1 on	O3	Y
[mm] SIM defocus	0	0.001444936568705701	CCD S2 on	N	N
[mm] SIM translation stage pos	-190.132523	-190.1425803651734	CCD S3 on	Y	Y
[mm] SIM translation stage offset	0	0.01005778216563158	CCD S4 on	O4	Y
[s] Observation start time (MET)	567143627.184000	567142481.0040801	CCD S5 on	N	N
Observation start date	2015-12-22T03:52:39	2015-12-22T03:34:41	Number of optional ACIS chips dropped	0	0
[s] Observation end time (MET)	567158627.184000	567160047.45507	On-chip summing requested	N	N
Observation end date	2015-12-22T08:02:39	2015-12-22T08:27:27	Subarray requested	NONE	NONE
Read mode	TIMED	TIMED	Alternating exposures requested	N	N
			[s] Primary exposure time	0.000000	3.1

## 2.3 Aspect





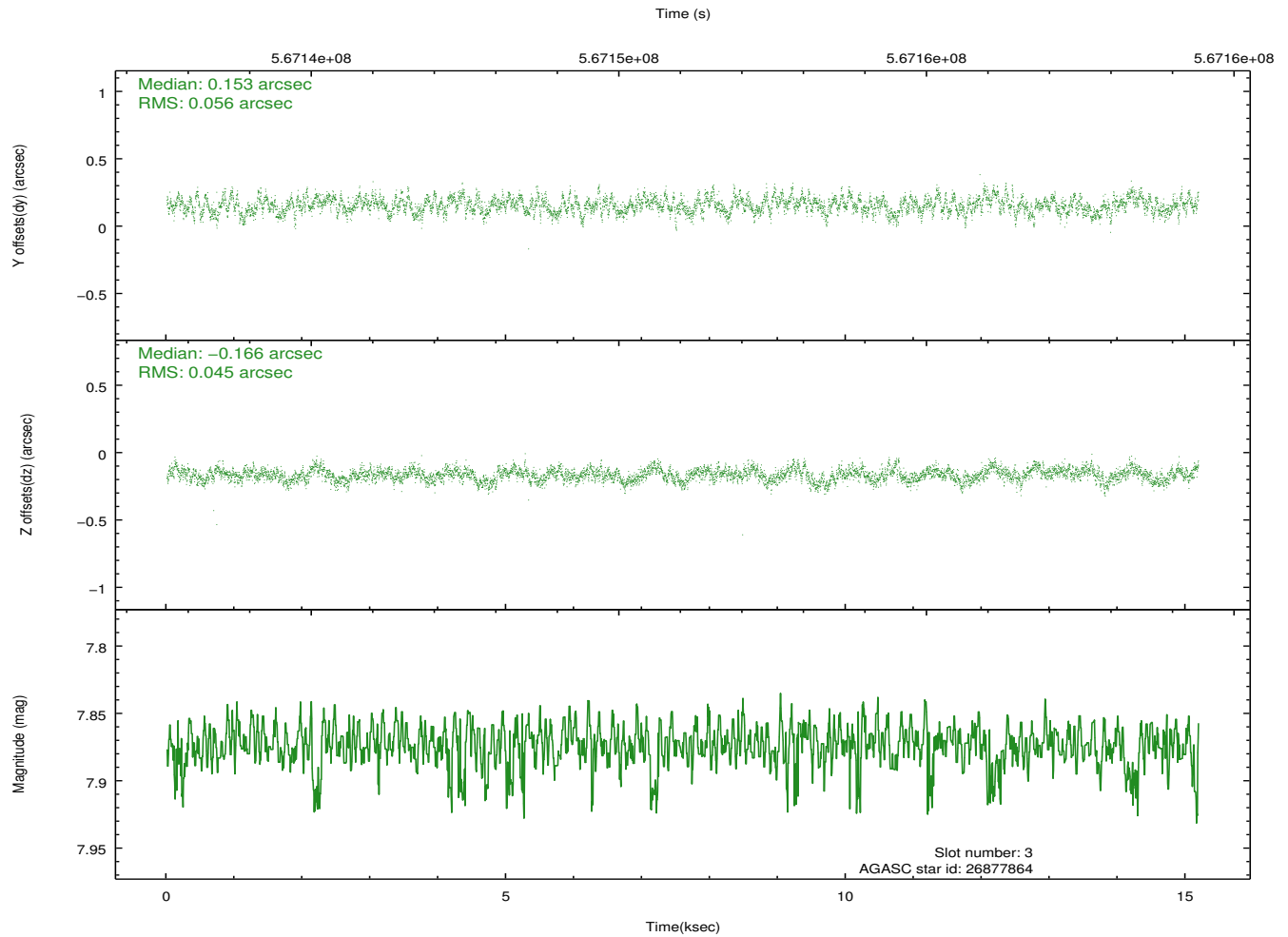
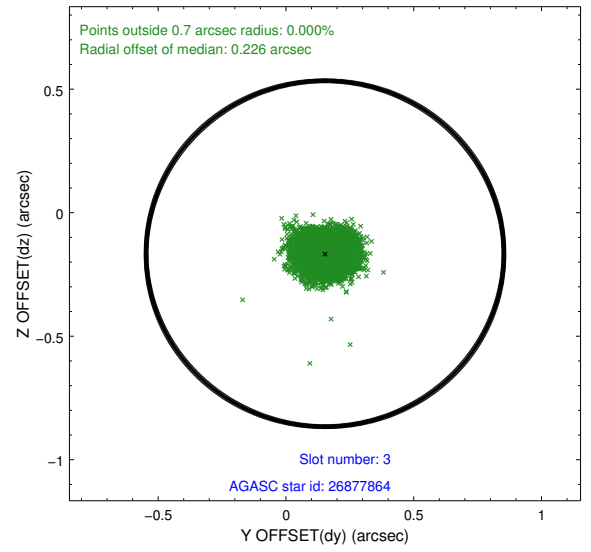
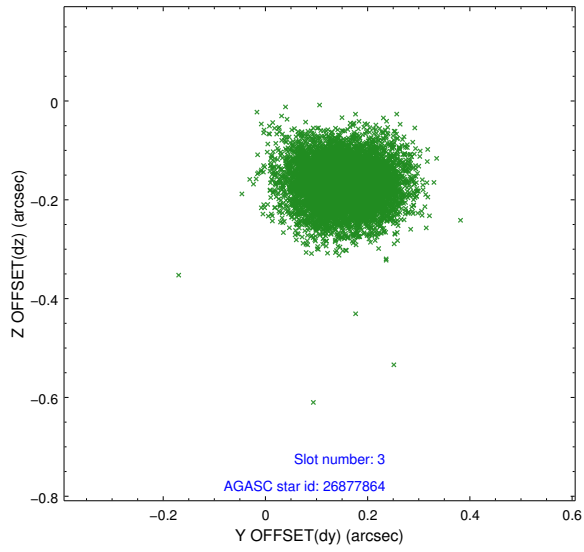
### Slot Statistics

slot	status	used	id	mag	n_pts	med_dy	med_dz	dr1	dr2	ra	dec	mean_y	mean_z
0	FID		ACIS-S-2	7.11	3704	-0.158	-0.142	0.011	0.019	0.000000	0.000000	-769.43	-1740.08
1	FID		ACIS-S-4	7.21	3704	0.407	0.115	0.009	0.015	0.000000	0.000000	2144.28	168.35
2	FID		ACIS-S-5	7.23	3704	-0.280	0.036	0.014	0.025	0.000000	0.000000	-1822.01	162.28
3	GUIDE	used	26877864	7.87	7406	0.153	-0.166	0.076	0.124	126.222510	5.350635	-1946.00	928.95
4	GUIDE	used	27398008	8.27	7404	-0.248	-0.538	0.077	0.124	126.473968	6.266143	1352.84	1816.40
5	GUIDE	used	27404376	8.45	7405	-0.093	-0.312	0.106	0.164	126.802767	6.300218	2053.69	862.68
6	GUIDE	used	27405592	8.79	7406	-0.212	0.510	0.111	0.178	127.367992	6.009295	2174.78	-1411.22
7	GUIDE	used	26884608	7.76	7406	0.399	0.503	0.091	0.146	126.983995	4.821437	-2209.53	-2389.67

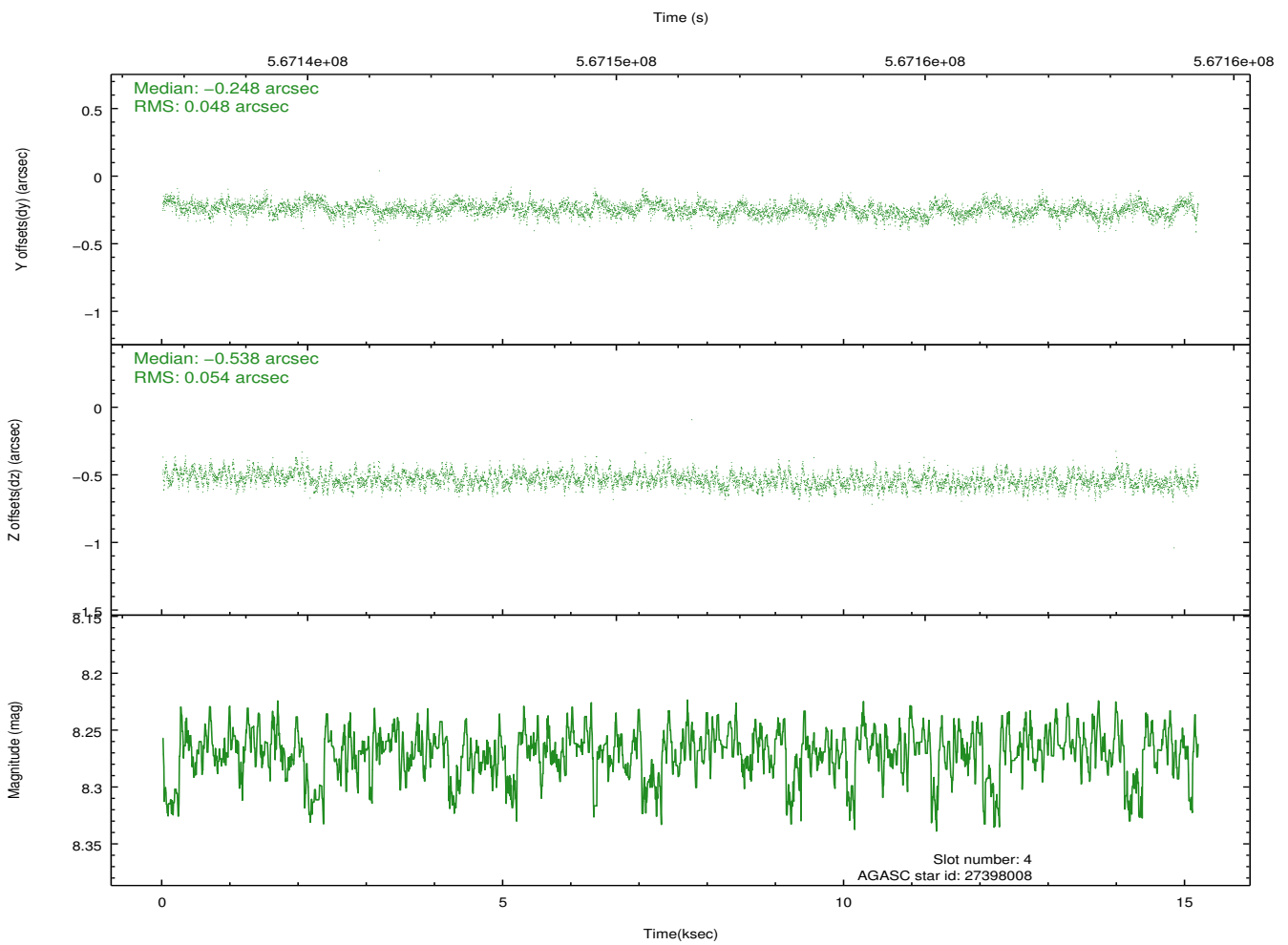
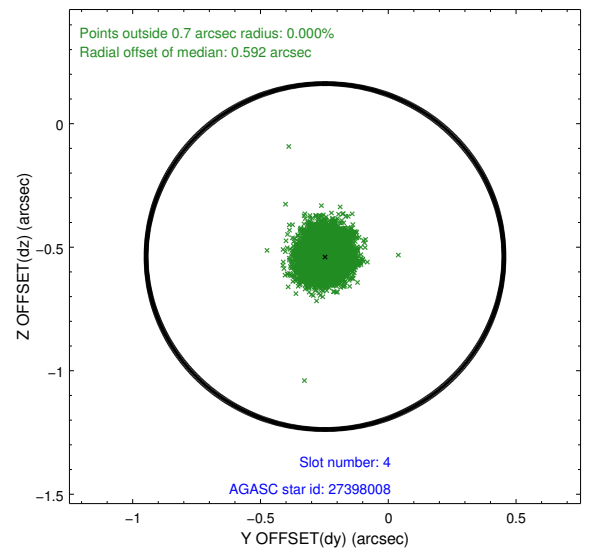
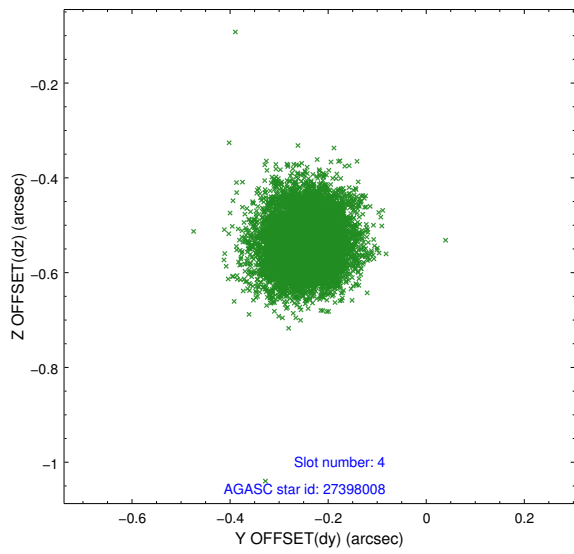
∞

## 2.4 Star Slots

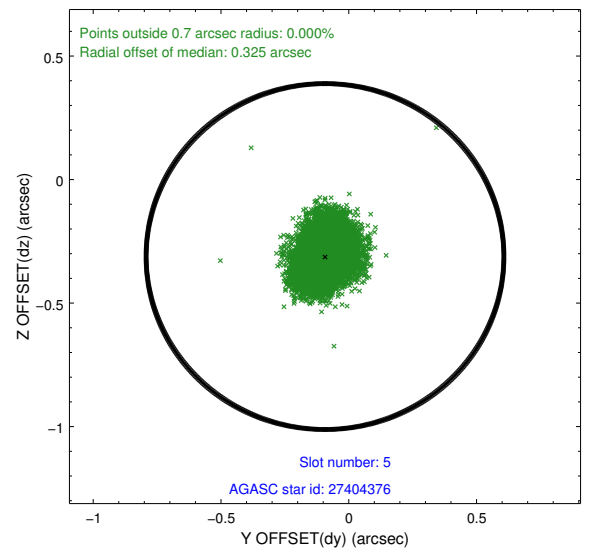
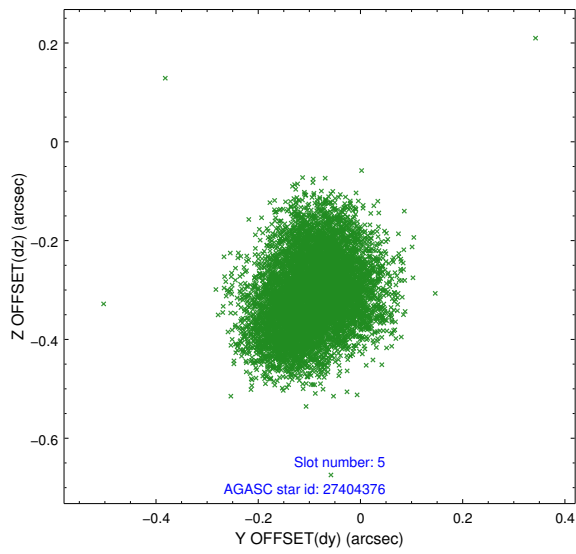
### 2.4.1 Slot 3



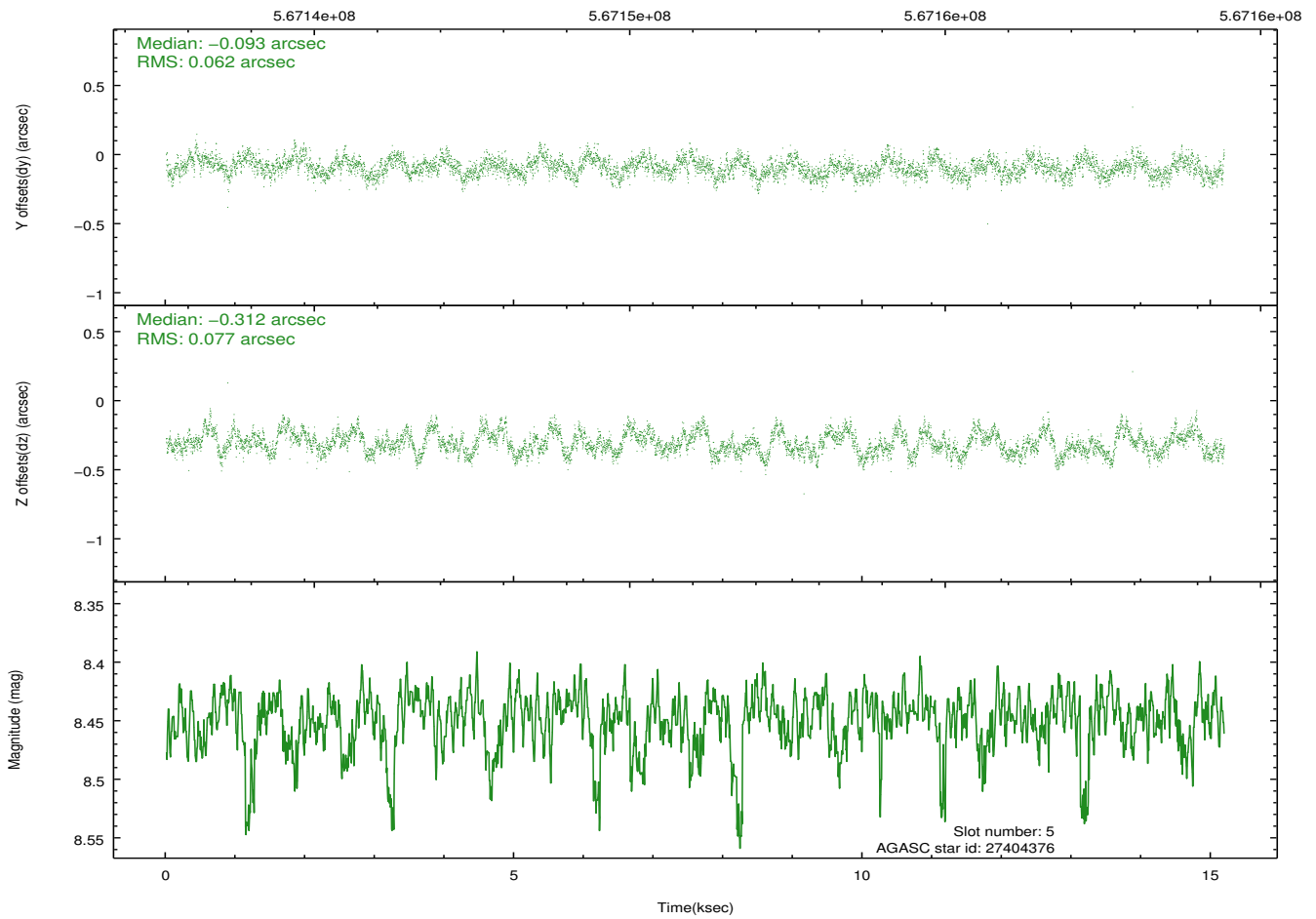
## 2.4.2 Slot 4



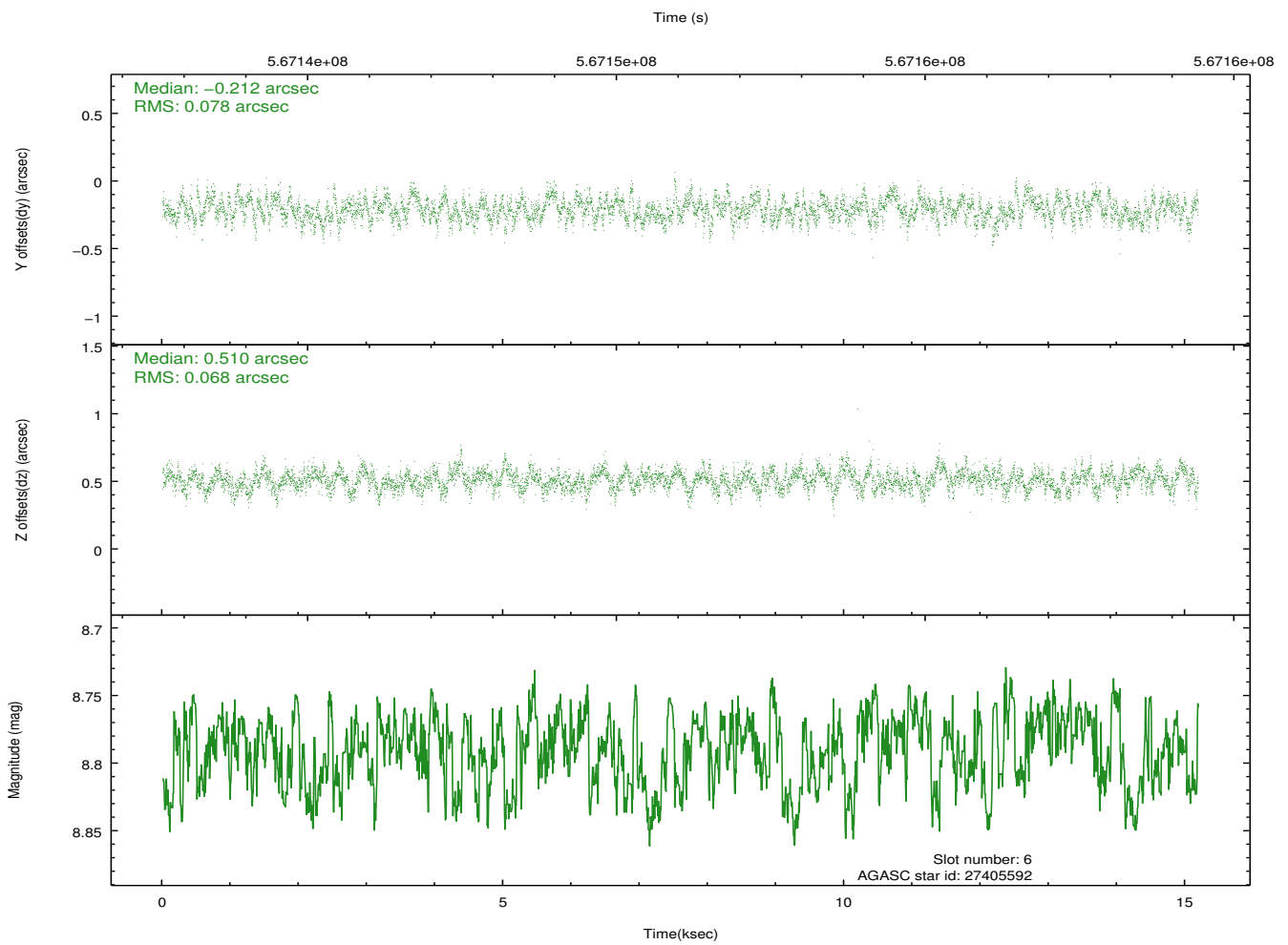
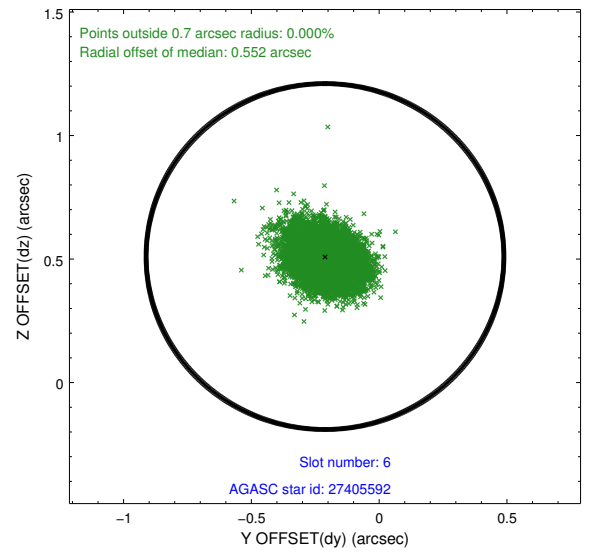
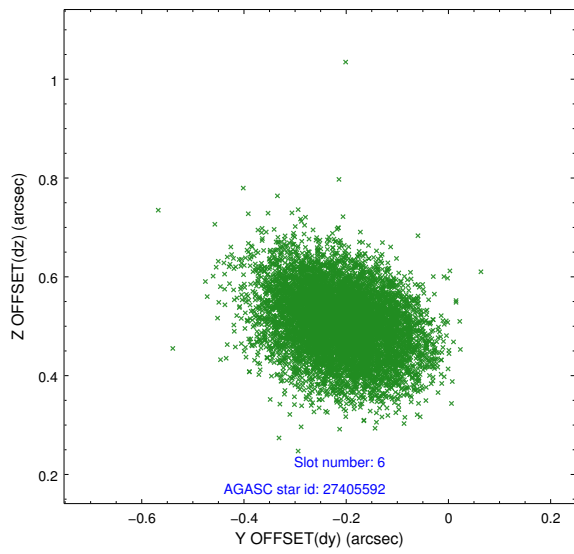
### 2.4.3 Slot 5



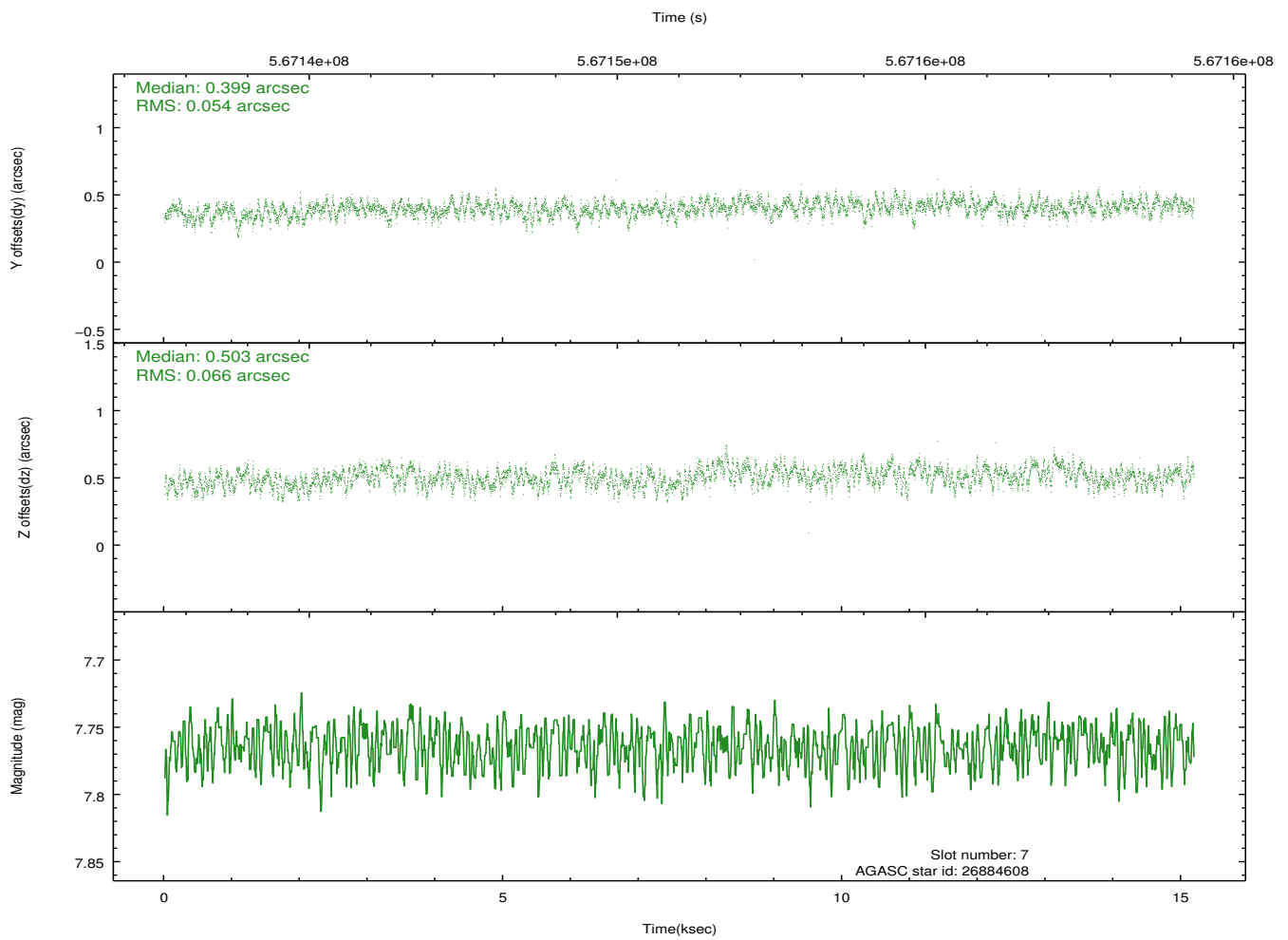
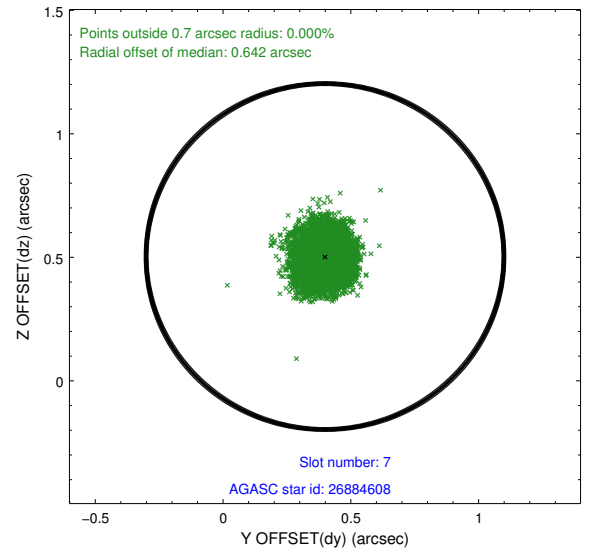
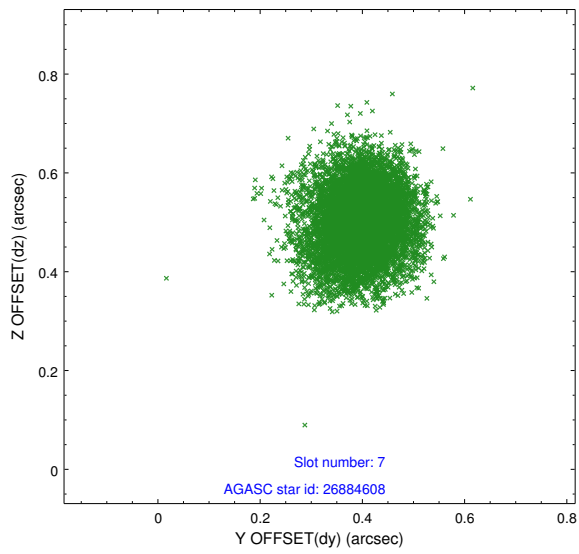
Time (s)



## 2.4.4 Slot 6

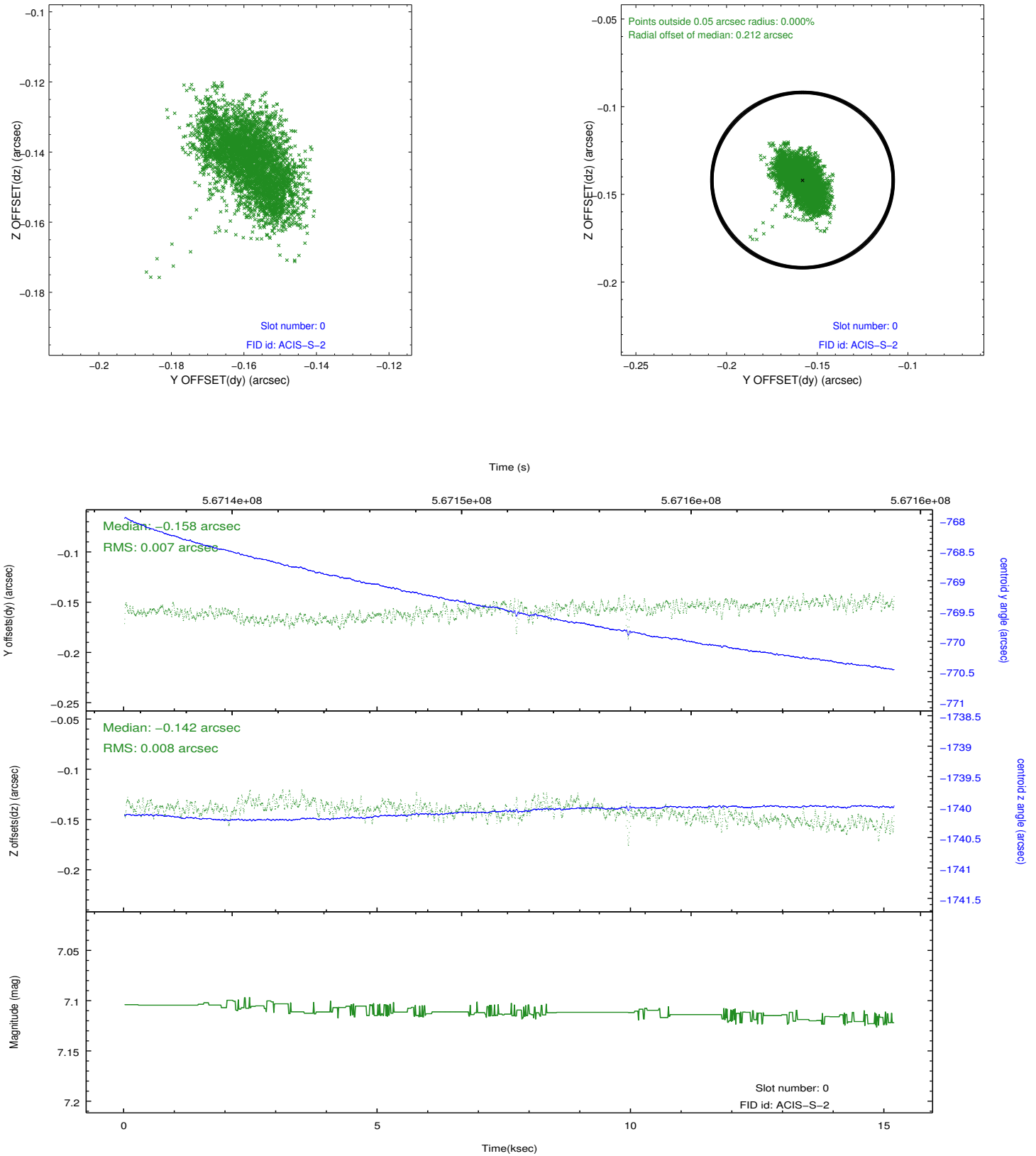


## 2.4.5 Slot 7

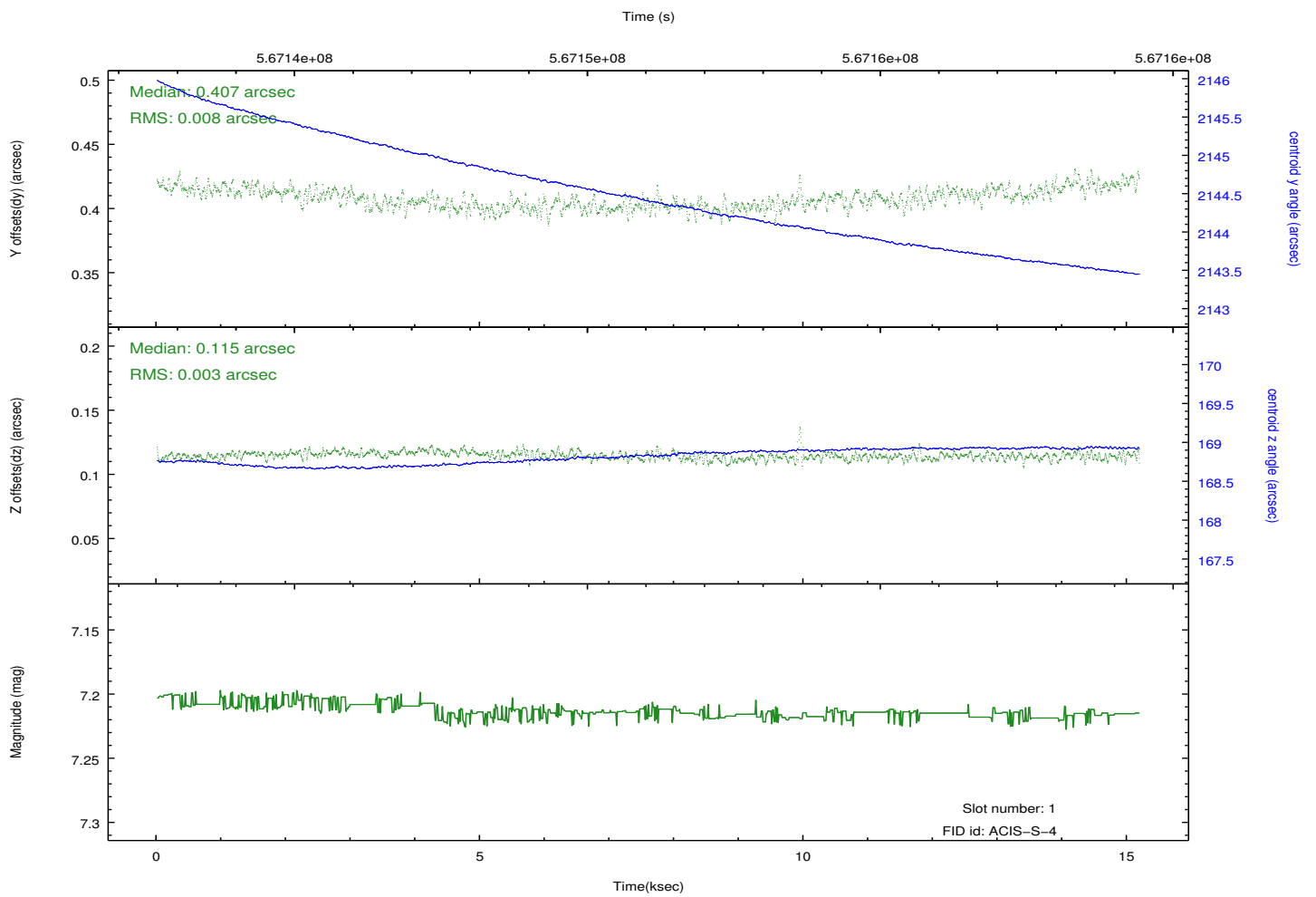
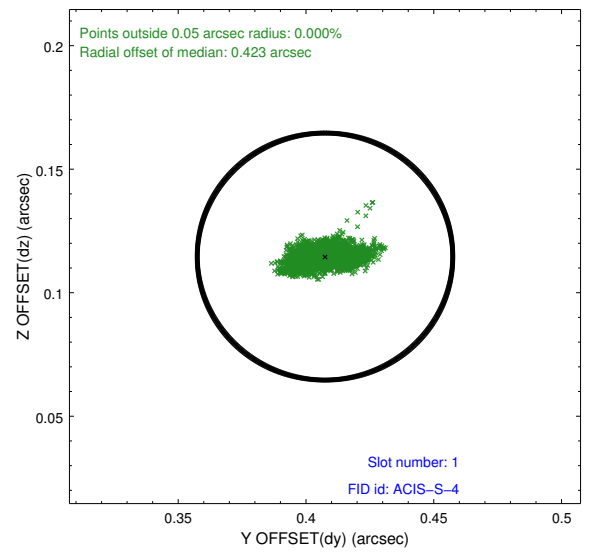
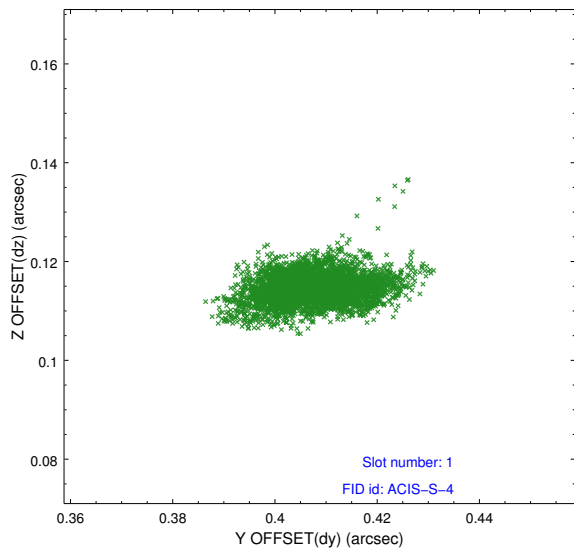


## 2.5 FID Slots

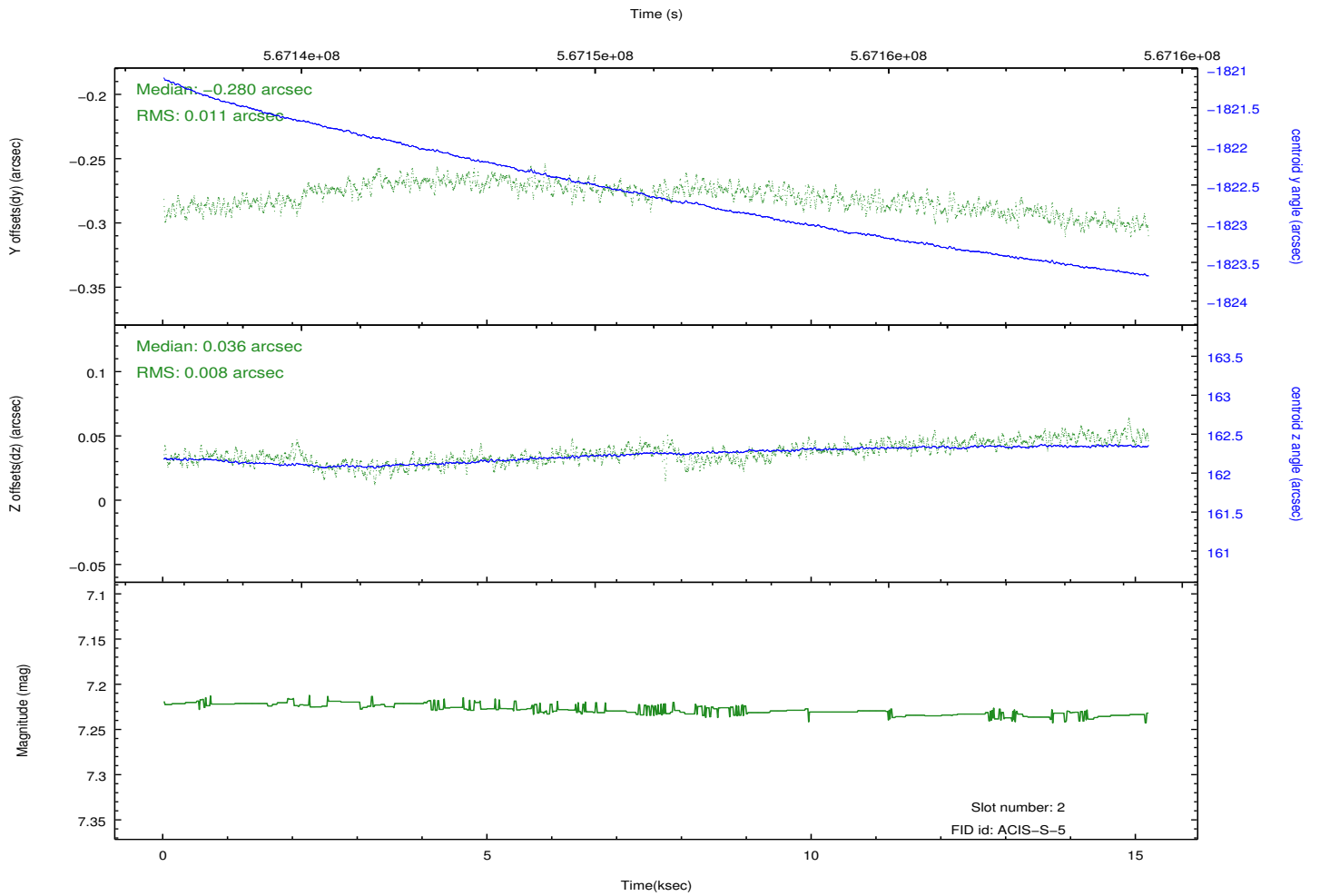
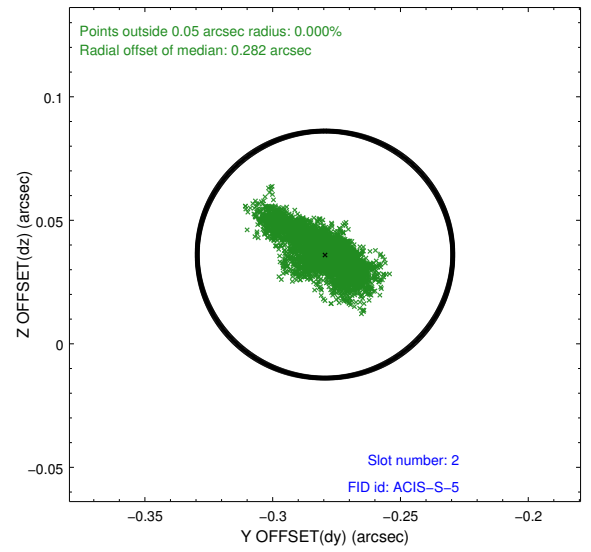
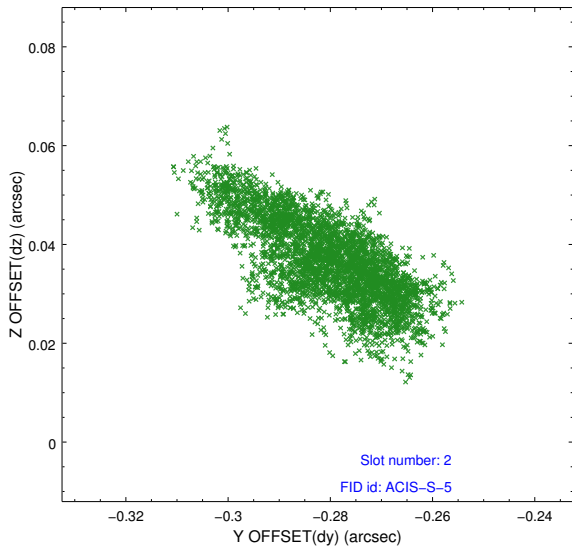
### 2.5.1 Slot 0



## 2.5.2 Slot 1



### 2.5.3 Slot 2



# A Summary

## A.1 Status

V&V Scientist	Beth Sundheim
V&V Date (YYYY-MM-DD)	2015.12.22
V&V Edition	1
V&V Disposition and Status	OK
V&V Charge Time	15.05846180594

## A.2 Comments