

# V&V Reference Report

## L2 ASCDS Version : 10.6

Observation 20632 - L2 Version 1  
Chandra X-Ray Center

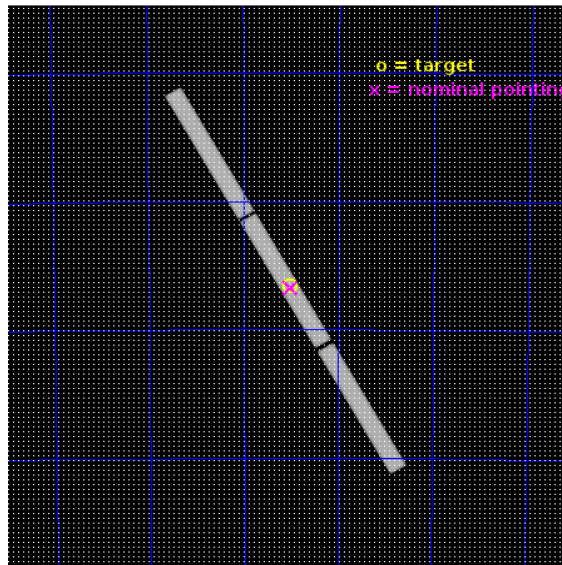
L2 Processing Date : Aug 31 2017

## Contents

<b>1</b>	<b>Front</b>	<b>2</b>
<b>2</b>	<b>OBI</b>	<b>3</b>
2.1	OBI . . . . .	3
2.1.1	Images . . . . .	3
2.1.2	Parameters . . . . .	4
2.1.3	Events . . . . .	4
2.2	Compared Parameters . . . . .	5
2.3	Aspect . . . . .	6
2.4	Star Slots . . . . .	9
2.4.1	Slot 3 . . . . .	9
2.4.2	Slot 4 . . . . .	10
2.4.3	Slot 5 . . . . .	11
2.4.4	Slot 6 . . . . .	12
2.4.5	Slot 7 . . . . .	13
2.5	FID Slots . . . . .	14
2.5.1	Slot 0 . . . . .	14
2.5.2	Slot 1 . . . . .	15
2.5.3	Slot 2 . . . . .	16
<b>3</b>	<b>Gratings</b>	<b>17</b>
3.1	LETG Arm . . . . .	17
<b>A</b>	<b>Summary</b>	<b>19</b>
A.1	Status . . . . .	19
A.2	Comments . . . . .	19

# 1 Front

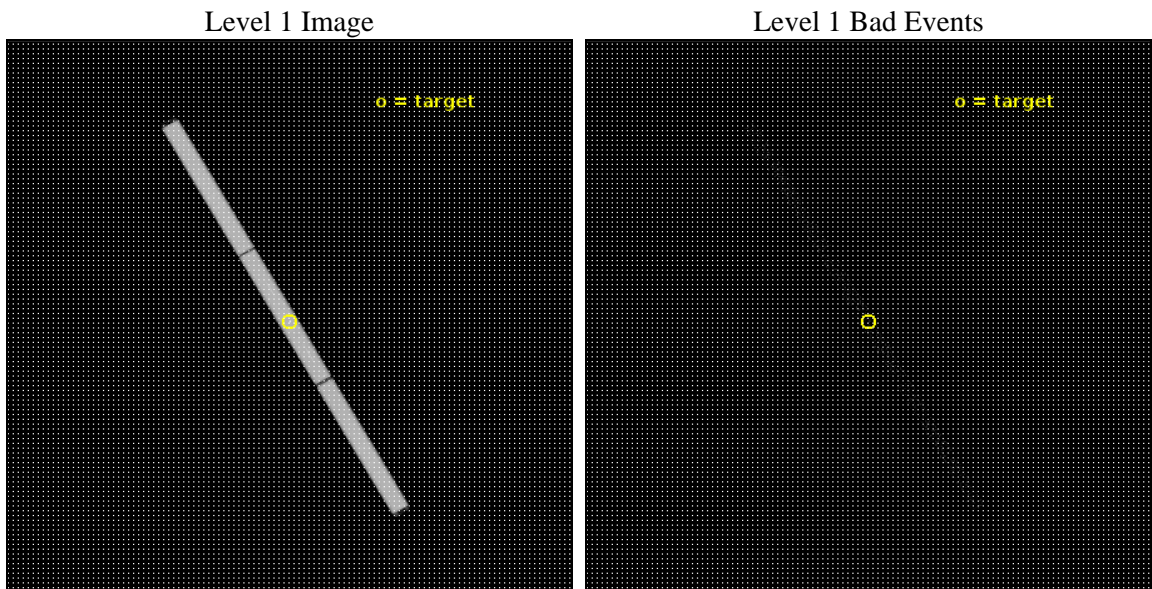
seq_num	300403	Sequence number
obs_id	20632	Observation id
title	The late outburst evolution of Nova Lup 2016: a likely solution of nova 'mysteries'	Proposal title
observer	Marina Orio	Principal investigator
object	Nova Lup 2016	Source name
ra_targ	232.2575	Observer's specified target RA [deg]
dec_targ	-44.828	Observer's specified target Dec [deg]
ra_nom	232.25921205955	Nominal RA [deg]
dec_nom	-44.837286513306	Nominal Dec [deg]
roll_nom	240.0685490941	Nominal Roll [deg]
revision	1	Processing version of data
ontime	34406.433261633	[s]
livetime	34077.769867275	Ontime multiplied by DTCOR
l2events	3003966	Number of level 2 events



## 2 OBI

### 2.1 OBI

#### 2.1.1 Images



### 2.1.2 Parameters

obi_num	0	Obi number	sched_exp_time	34250.000000	[s] Scheduled observation exposure time
ascdsver	10.6	Processing system revision	ontime	34406.433261633	[s]
caldbver	4.7.6	&#160	l1events	3757365	Number of level 1 events
date	2017-08-31T17:02:22	Date and time of file creation	tgmethod	TGDETECT	Method used to create src1a file
revision	1	Processing version of data	zo_pos	(32805.06, 33028.04)	src1a sky pixel position

### 2.1.3 Events

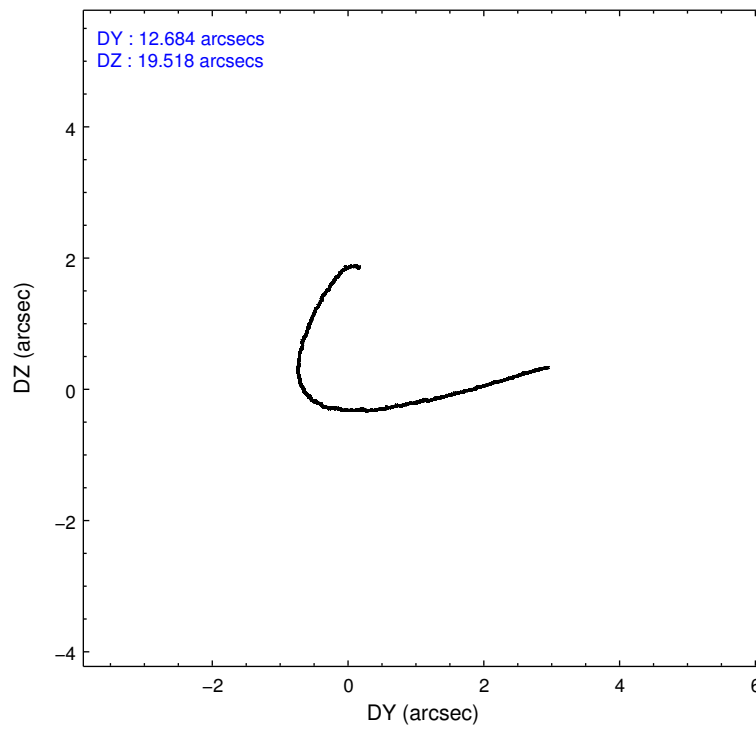
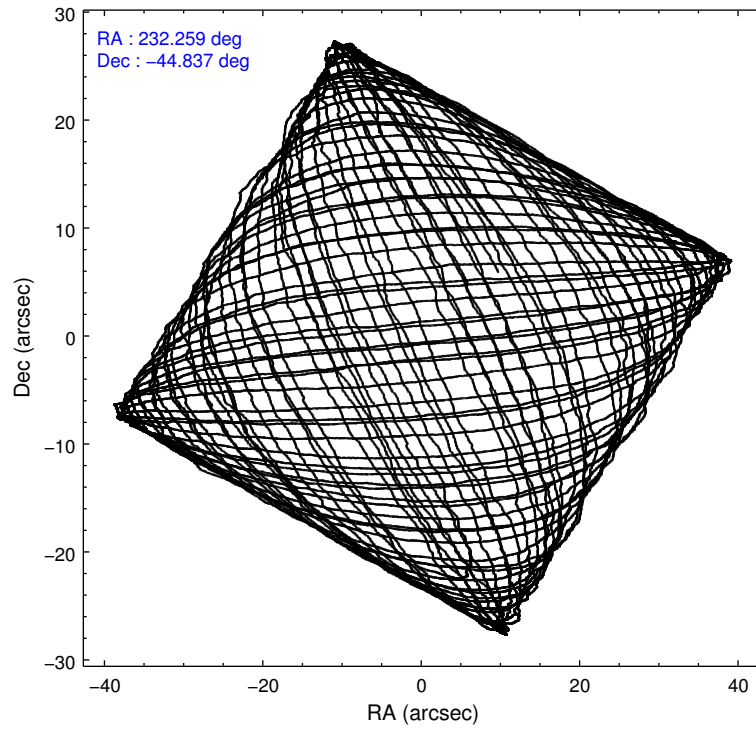
#### Level 1 Events

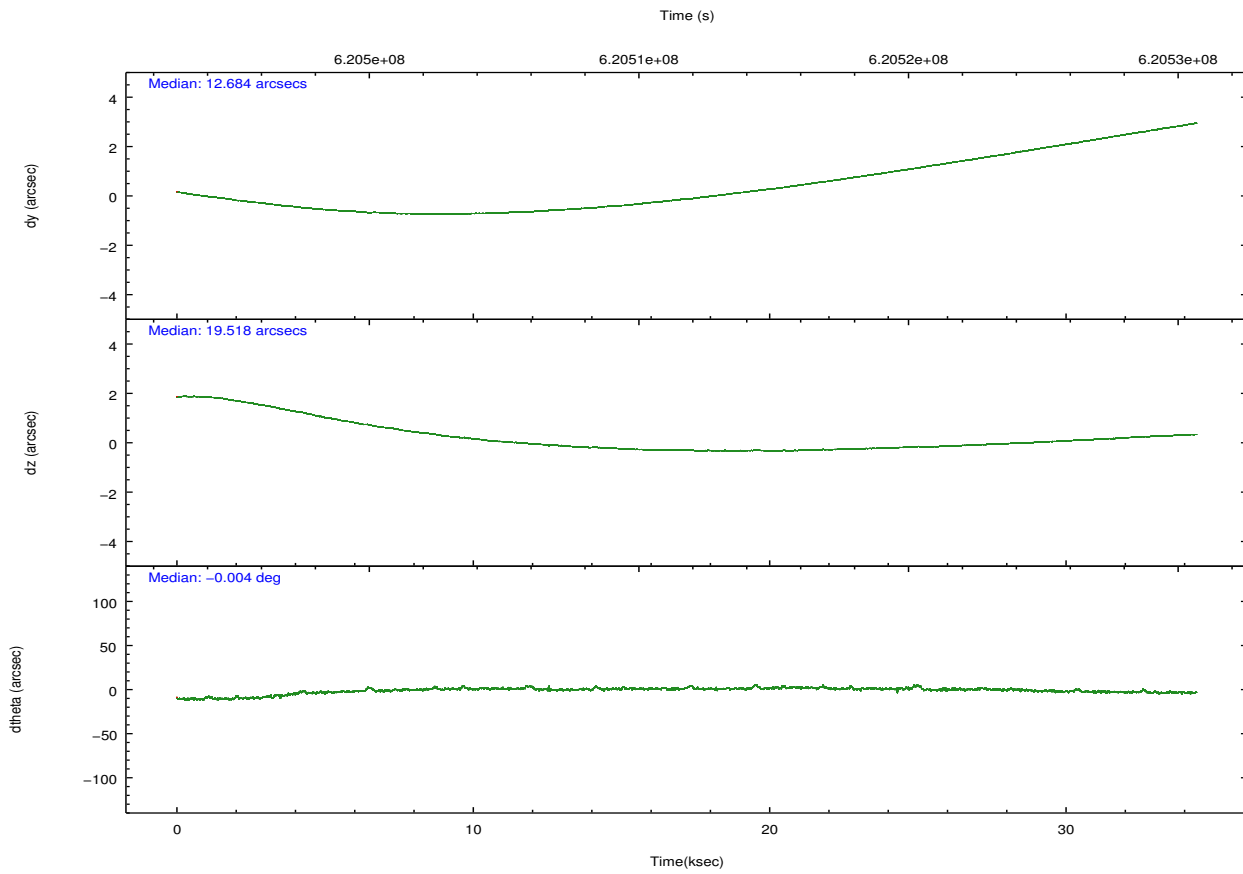
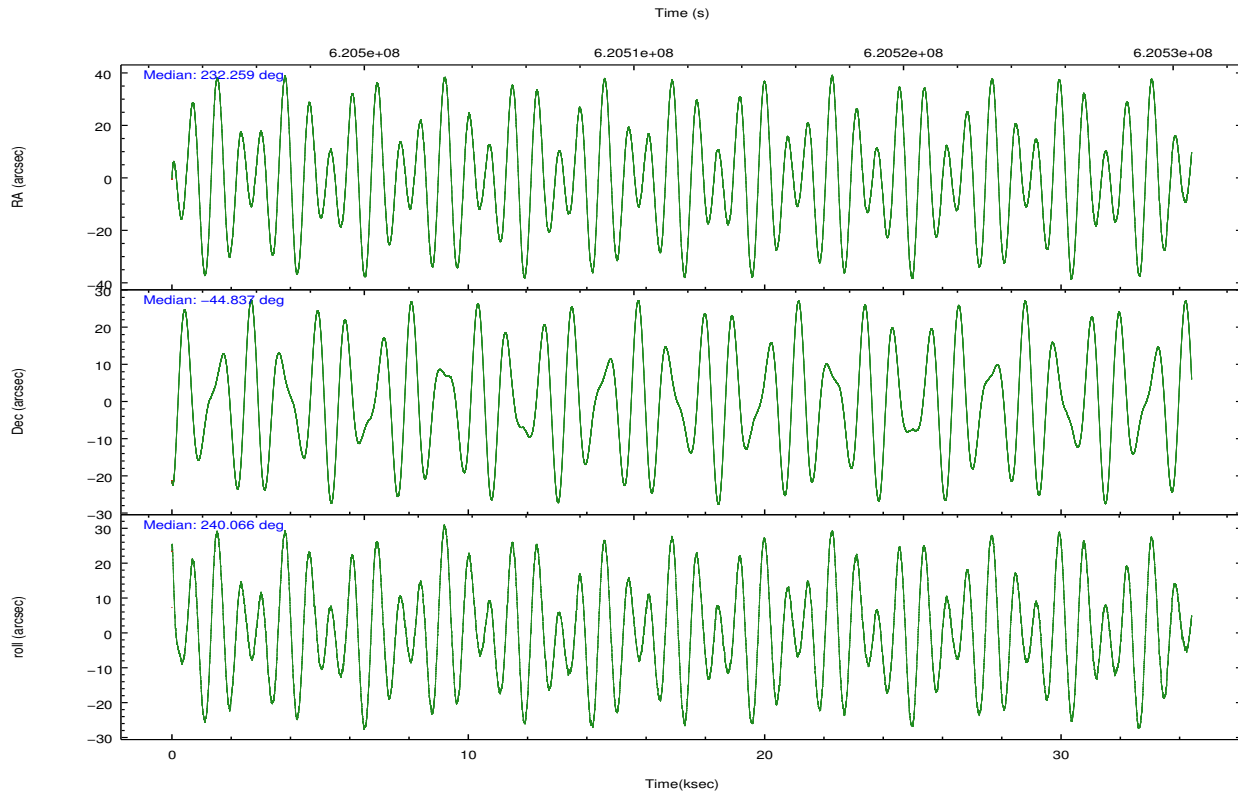
	<b>segment 1</b>	<b>segment 2</b>	<b>segment 3</b>
level 1 events	1259810	1255470	1242085
rejected events	22857	22650	22498
rejected %	1%	1%	1%

## 2.2 Compared Parameters

Parameter	Planned	Actual	Parameter	Planned	Actual
Instrument	HRC	HRC	Obspar format version number	7	7
Detector	HRC-S	HRC-S	Obspar file type	PREDICTED	ACTUAL
Grating	LETG	LETG	Obspar update status	NONE	UPDATED
Data mode	OBSERVING	OBSERVING			
Observation mode	POINTING	POINTING			
[deg] Pointing RA	232.257205	232.2592120595455			
[deg] Pointing Dec	-44.808498	-44.83728651330571			
[deg] Pointing Roll	239.999796	240.0685490941049			
[mm] SIM focus pos	-1.429586	-1.428180813131781			
[mm] SIM defocus	0.1037507710433287	0.1051558262725154			
[mm] SIM translation stage pos	250.455976	250.466033080201			
[mm] SIM translation stage offset	0	-0.01005468664627074			
[s] Observation start time (MET)	620494744.184000	620493903.65213			
Observation start date	2017-08-30T15:37:55	2017-08-30T15:25:03			
[s] Observation end time (MET)	620528994.184000	620530259.89176			
Observation end date	2017-08-31T01:08:45	2017-08-31T01:30:59			

## 2.3 Aspect





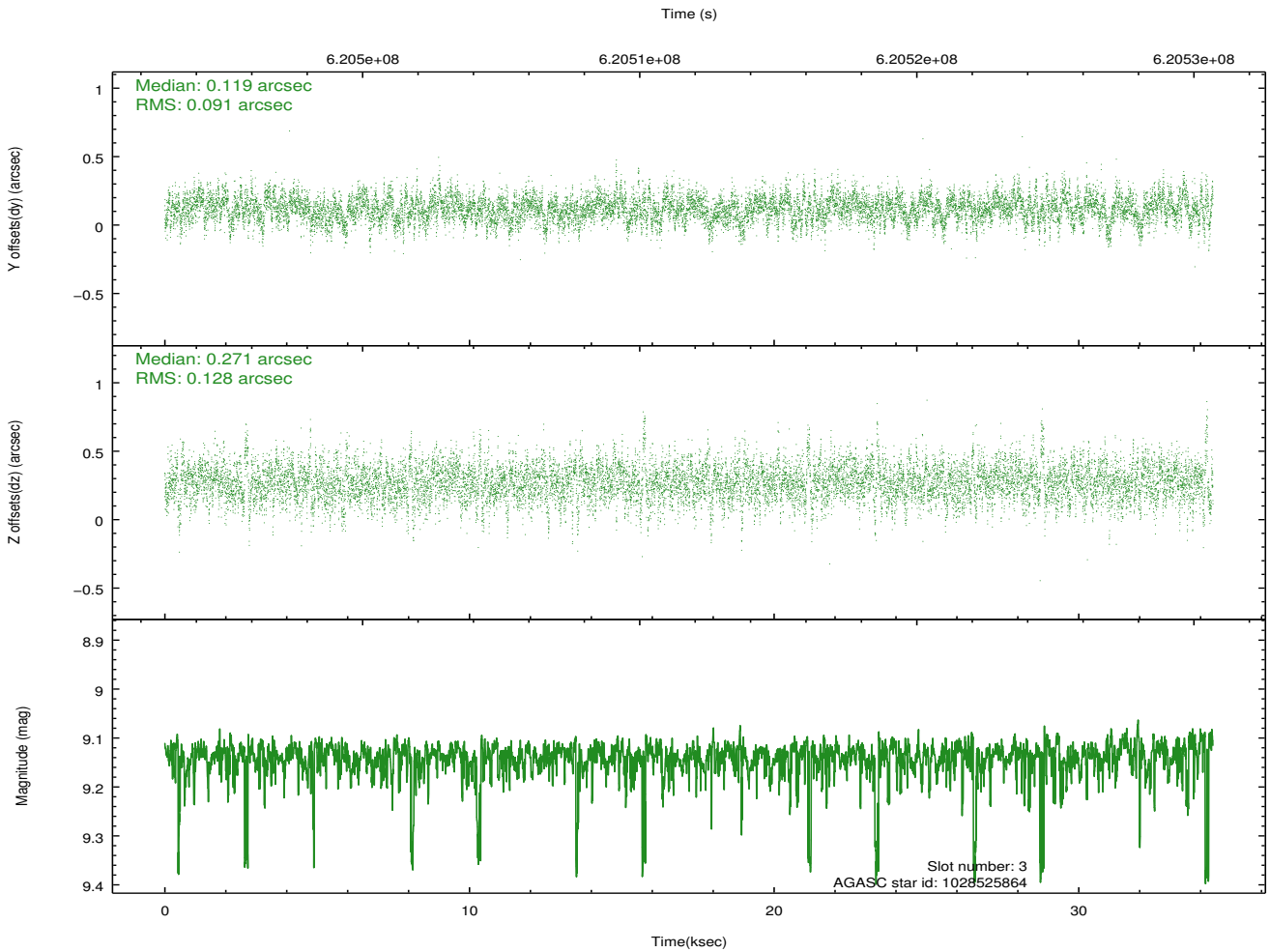
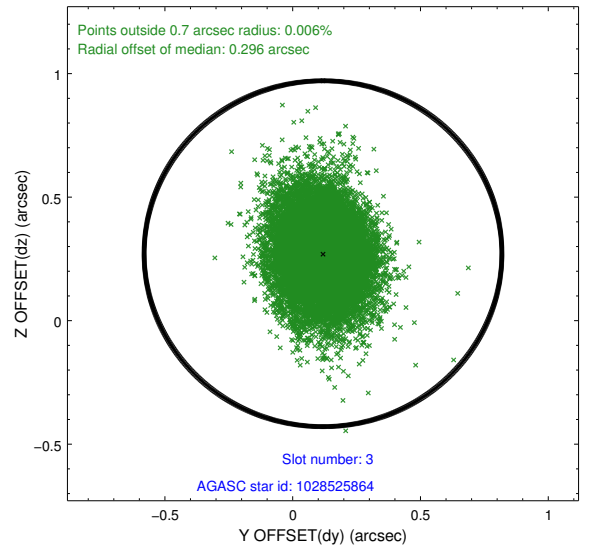
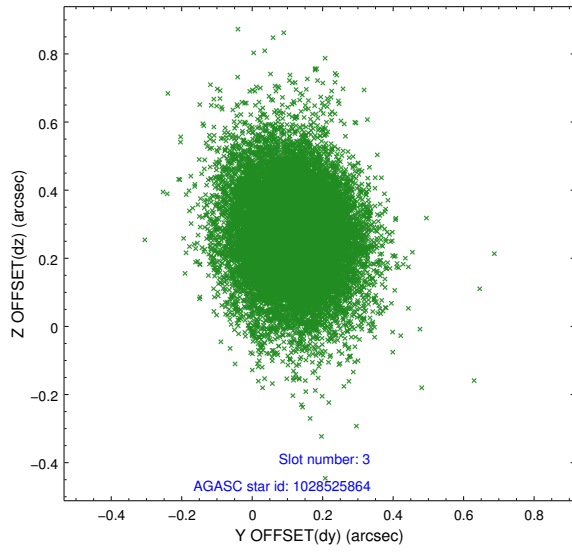
### Slot Statistics

slot	status	used	id	mag	n_pts	med_dy	med_dz	dr1	dr2	ra	dec	mean_y	mean_z
0	FID		HRC-S-2	7.03	8393	0.221	-0.199	0.034	0.052	0.000000	0.000000	1232.38	-461.40
1	FID		HRC-S-3	7.04	8393	-0.086	-0.062	0.025	0.047	0.000000	0.000000	-1170.19	560.82
2	FID		HRC-S-4	7.01	8392	0.264	-0.038	0.029	0.059	0.000000	0.000000	1230.85	563.56
3	GUIDE	used	1028525864	9.14	16763	0.119	0.271	0.163	0.279	232.358609	-44.544239	-952.90	-249.82
4	GUIDE	used	1028658904	7.16	16784	-0.263	-0.018	0.117	0.208	233.063380	-44.407366	-2277.85	1078.72
5	GUIDE	used	1087250336	8.16	16779	0.116	-0.310	0.131	0.222	232.072575	-45.134968	1253.11	181.96
6	GUIDE	used	1028534144	7.97	16781	0.218	0.150	0.118	0.203	231.739199	-44.107576	-1510.99	-2418.88
7	GUIDE	used	1087243920	8.58	16770	-0.188	-0.087	0.122	0.212	232.193896	-45.546372	2380.82	1190.10

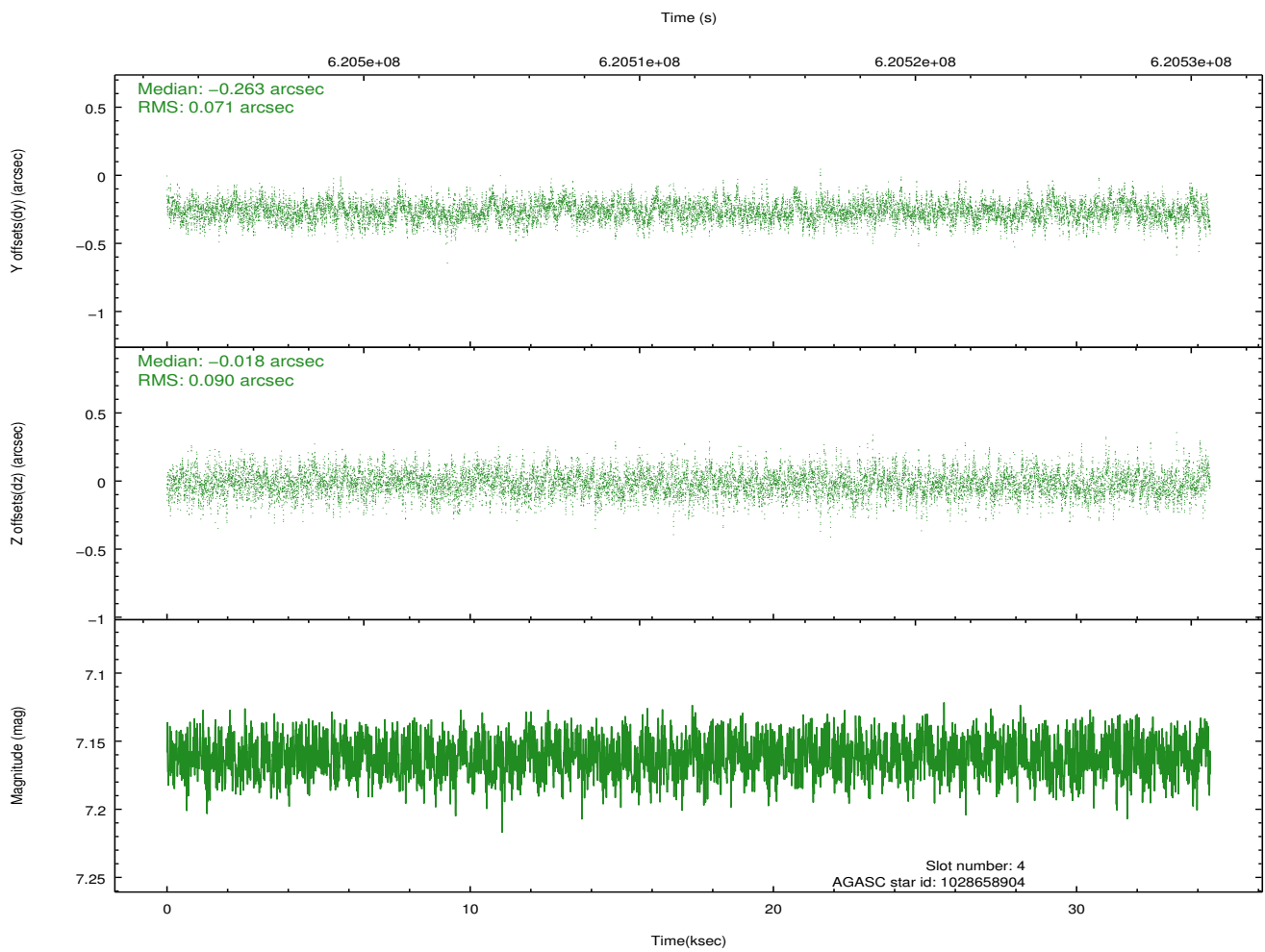
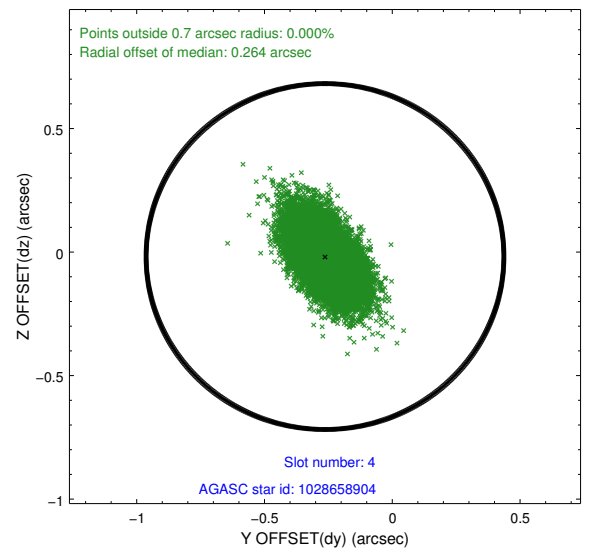
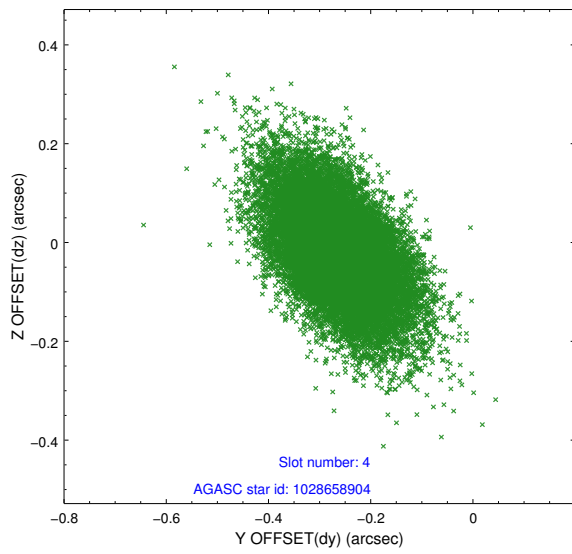
∞

## 2.4 Star Slots

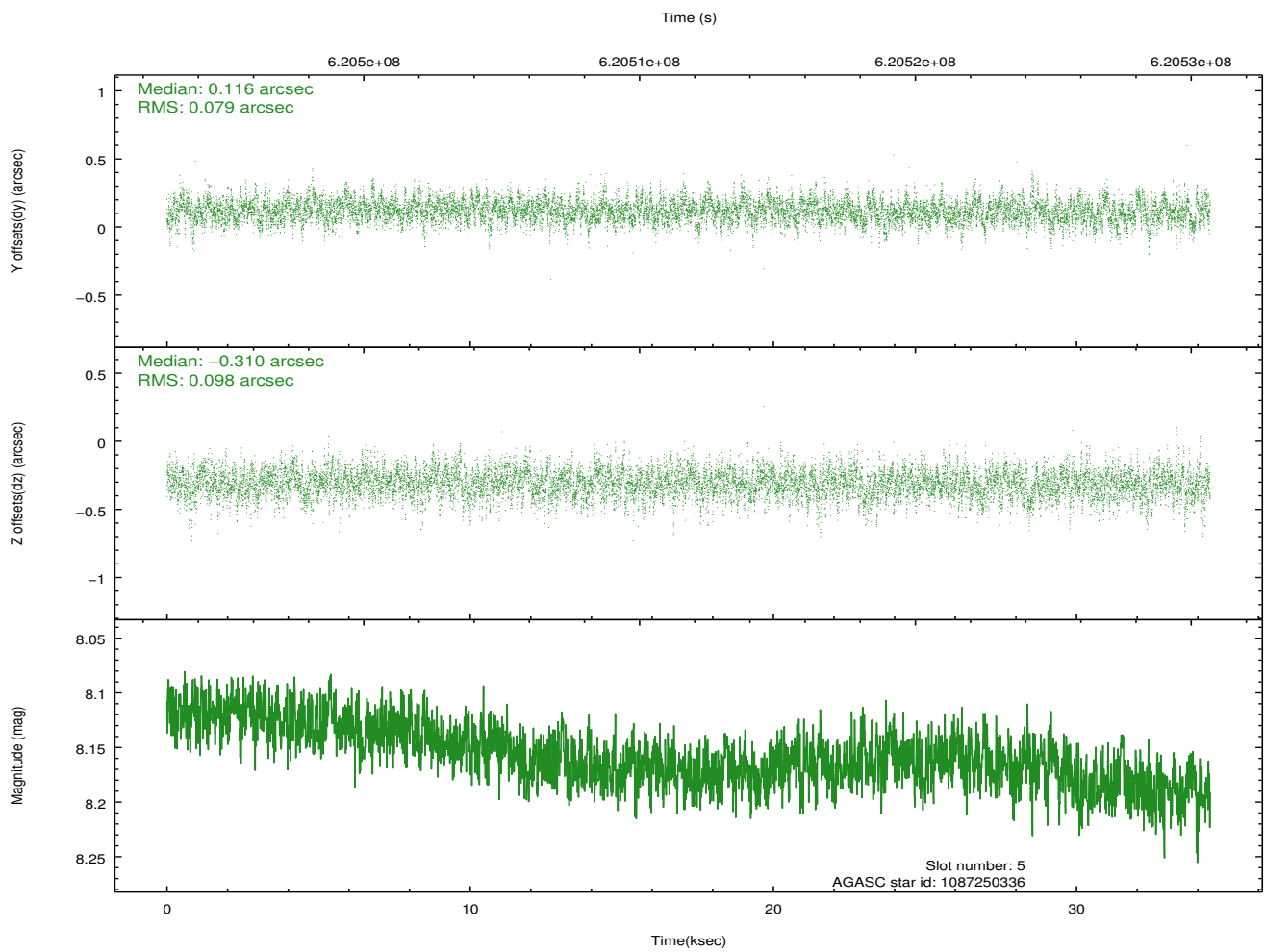
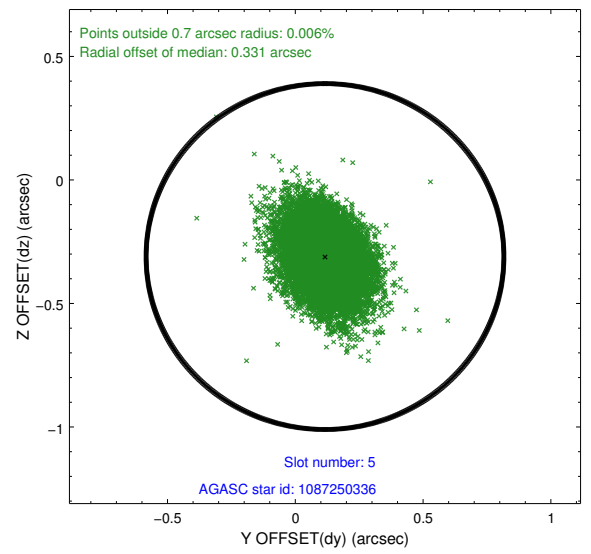
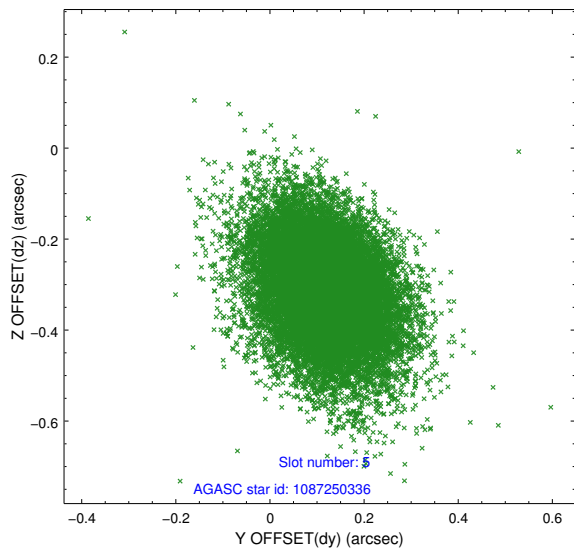
### 2.4.1 Slot 3



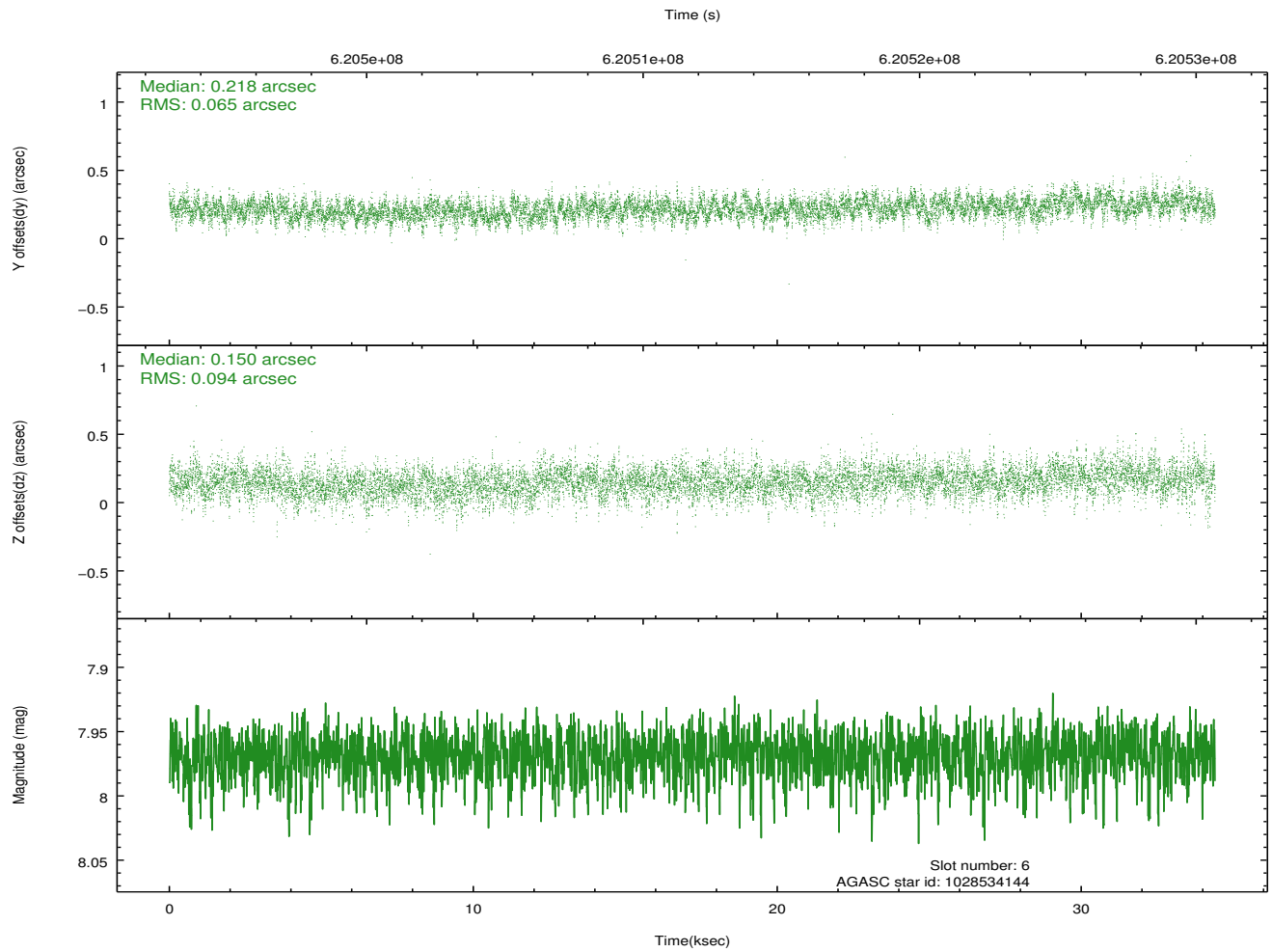
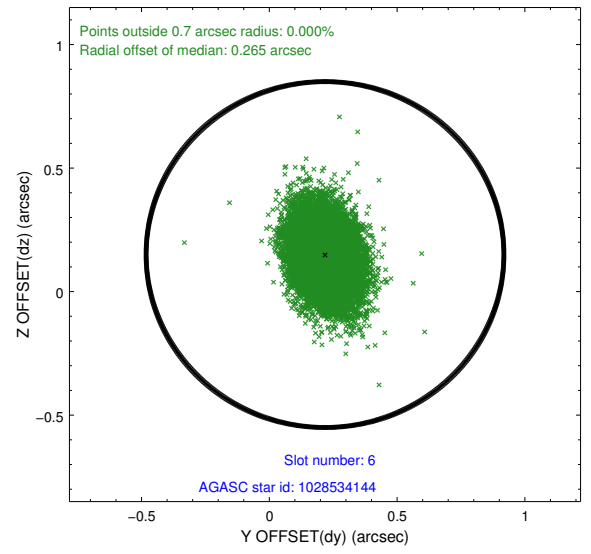
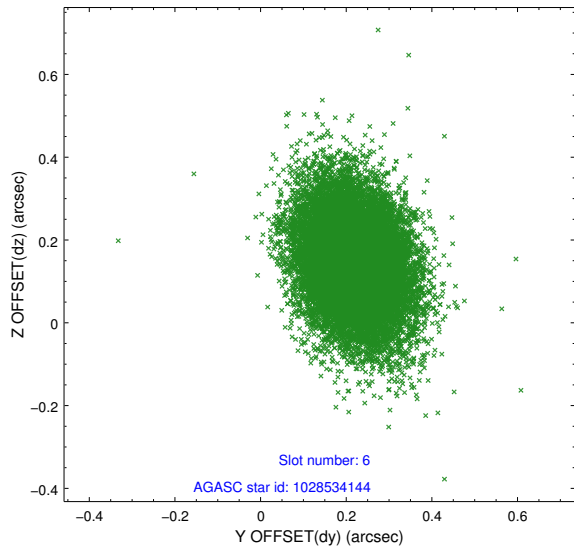
## 2.4.2 Slot 4



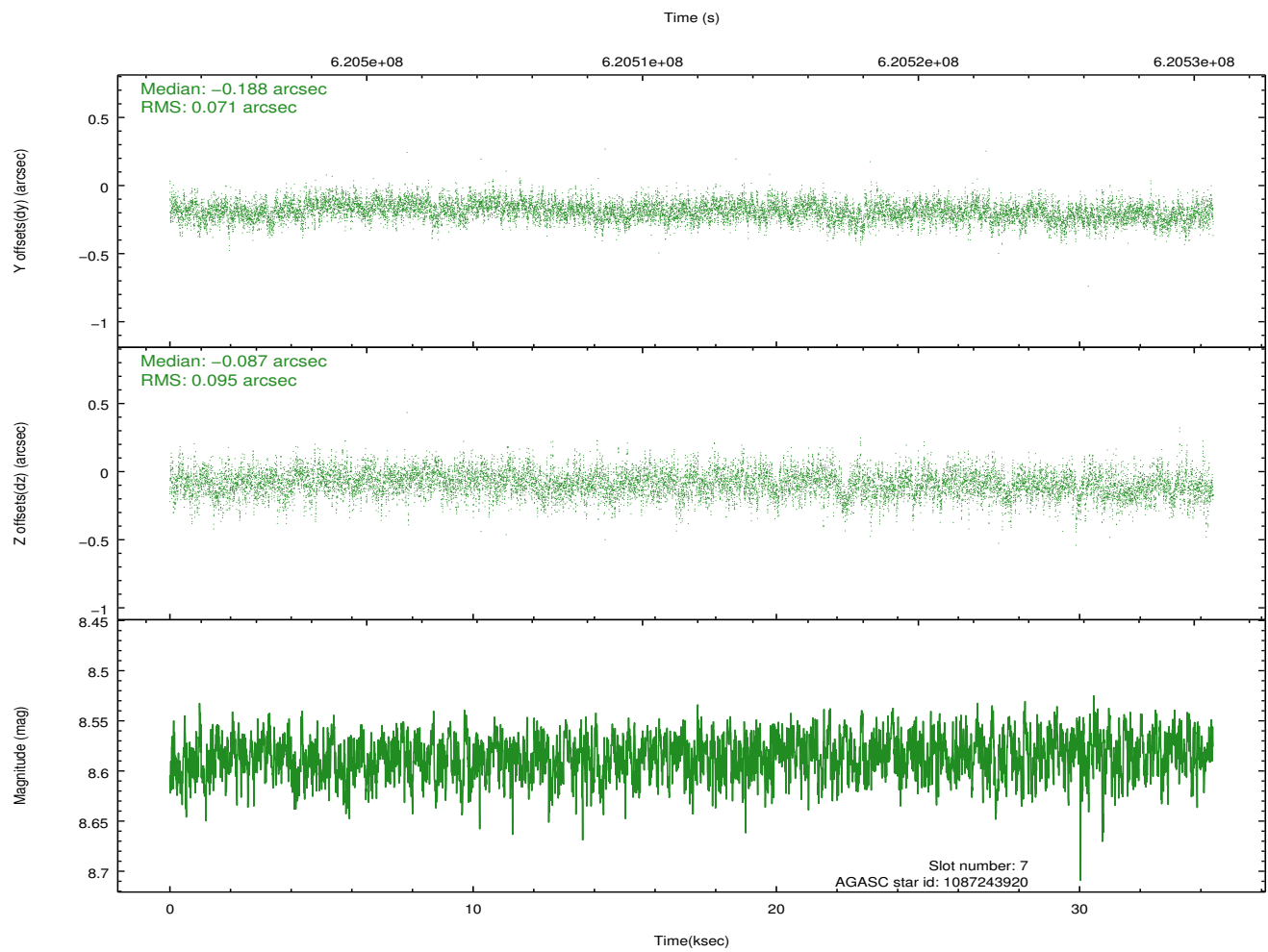
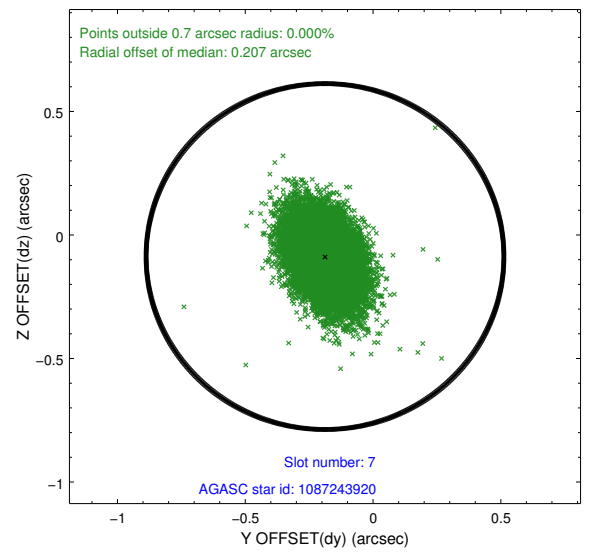
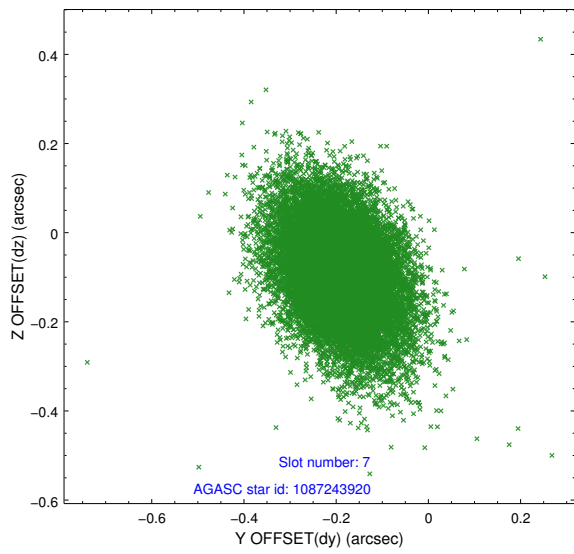
### 2.4.3 Slot 5



## 2.4.4 Slot 6

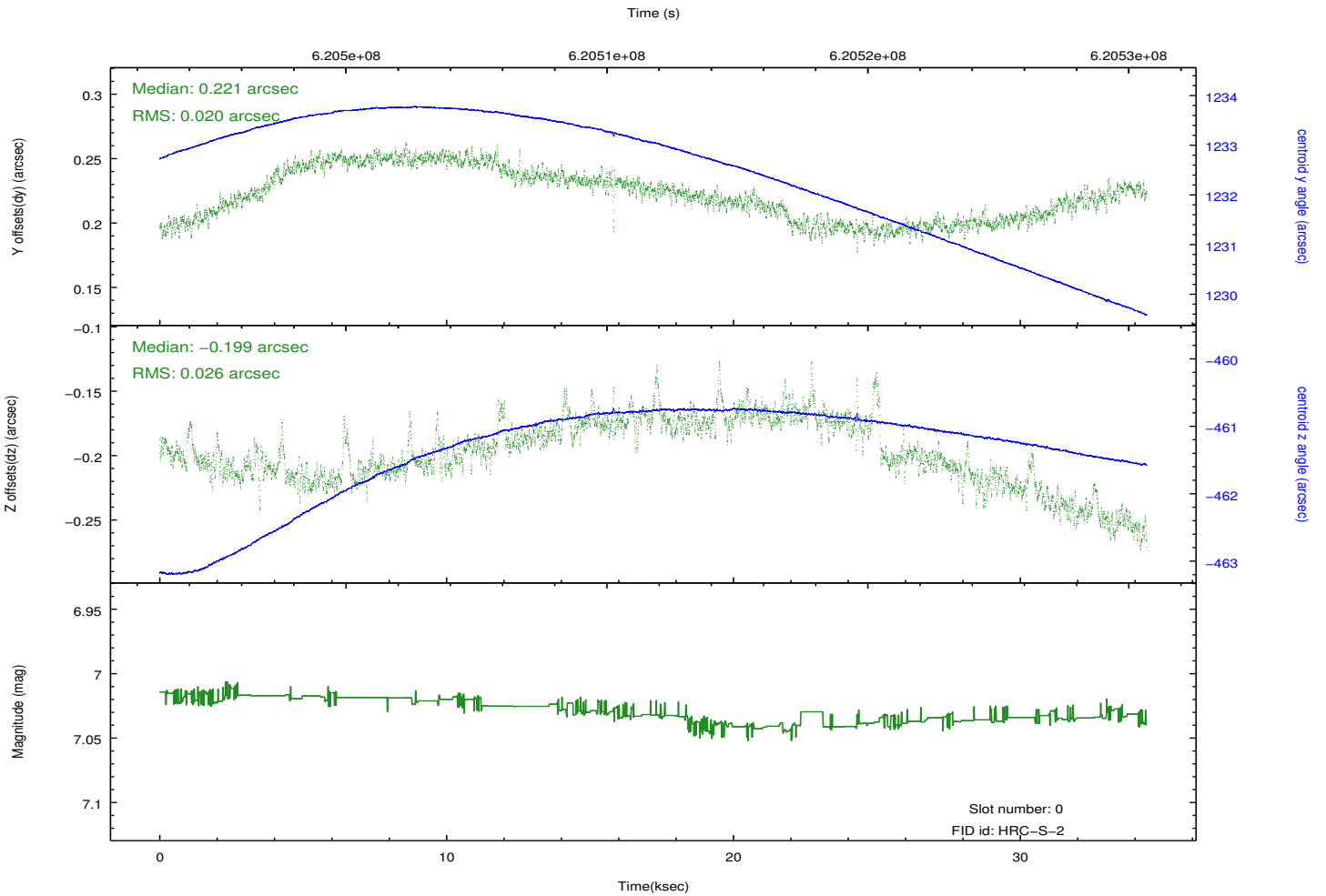
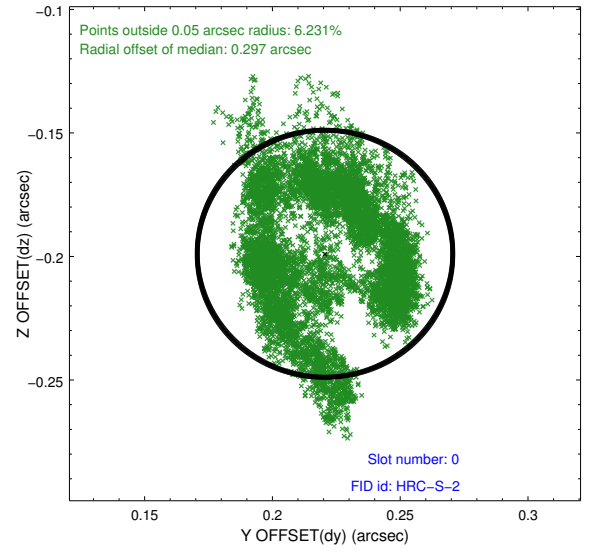
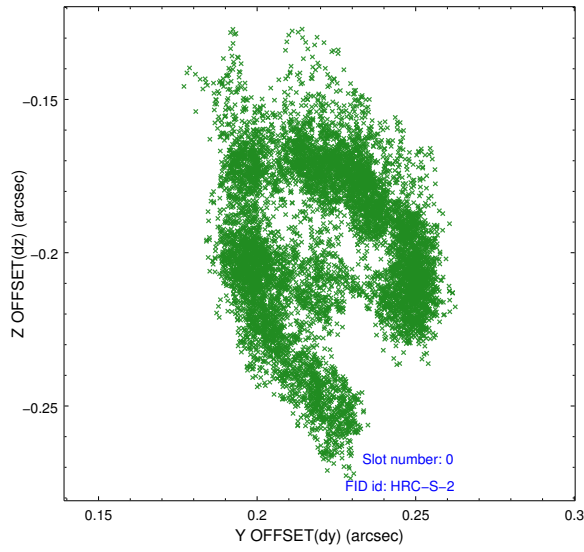


### 2.4.5 Slot 7

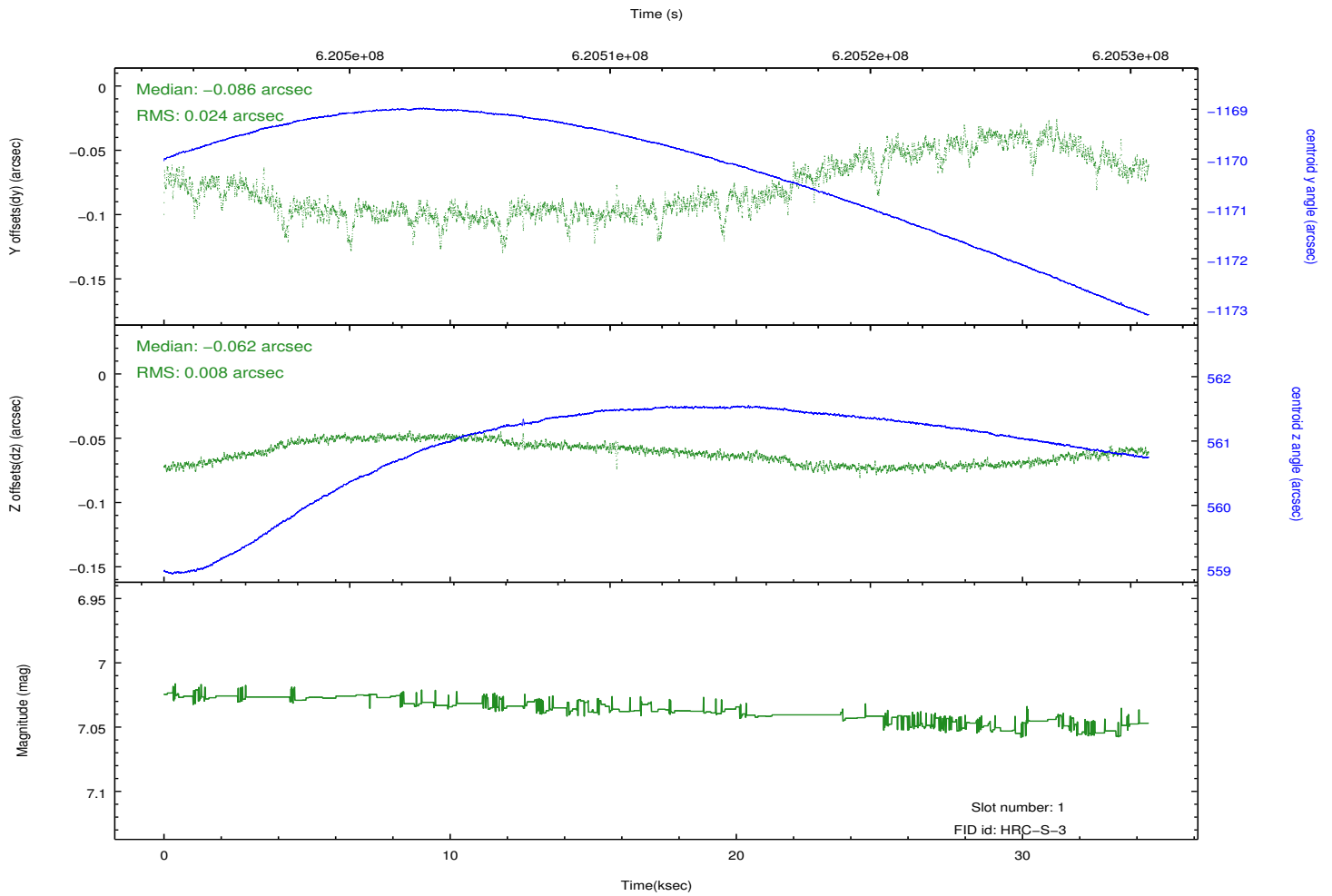
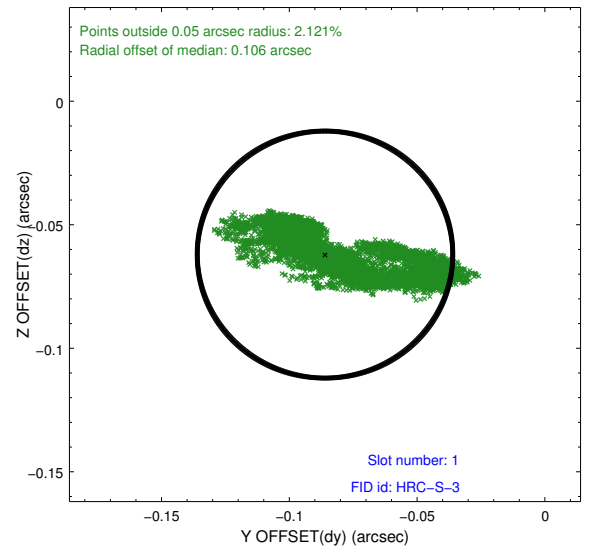
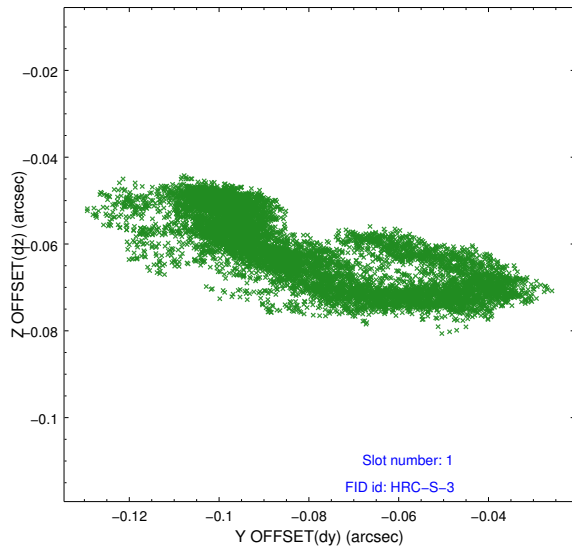


## 2.5 FID Slots

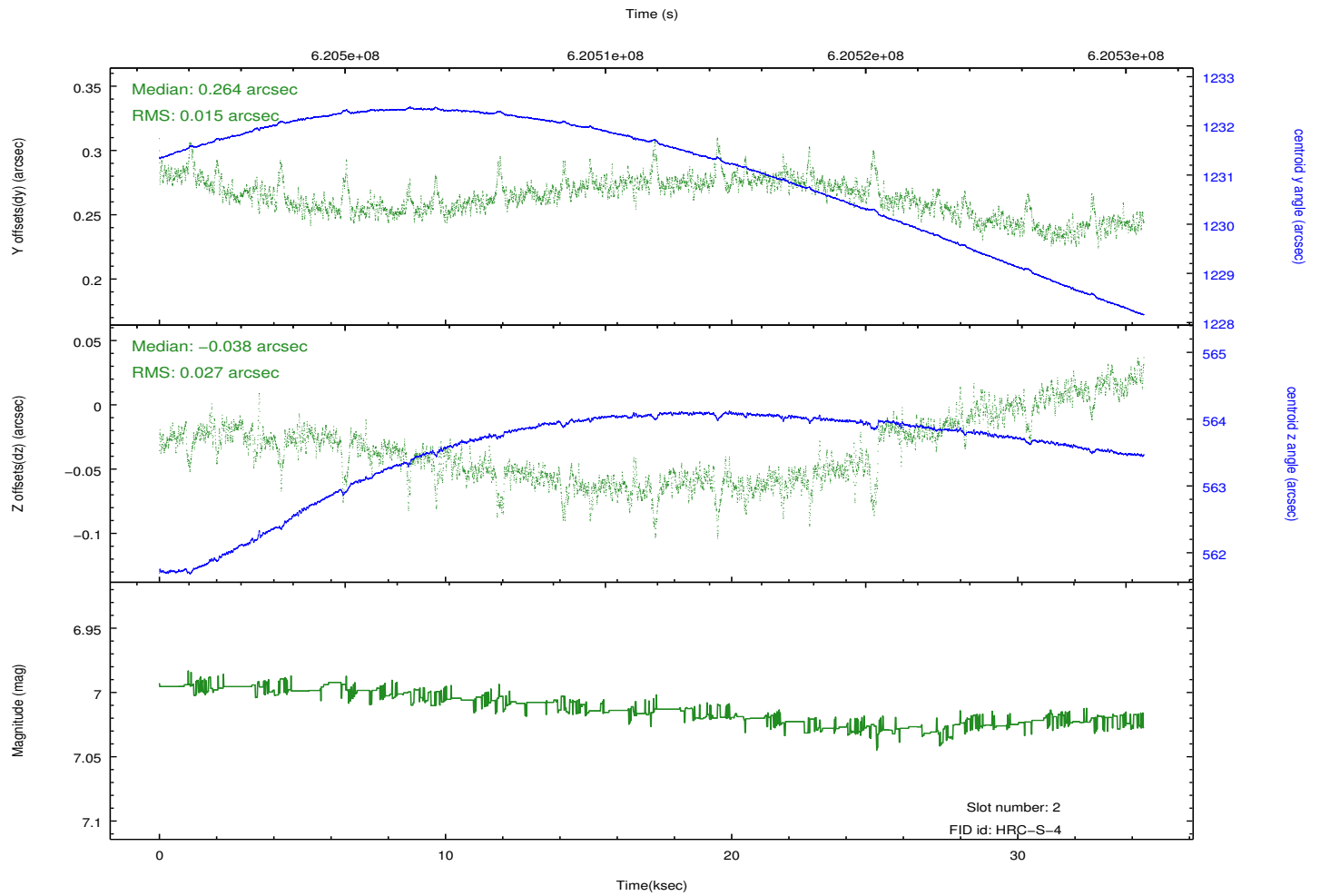
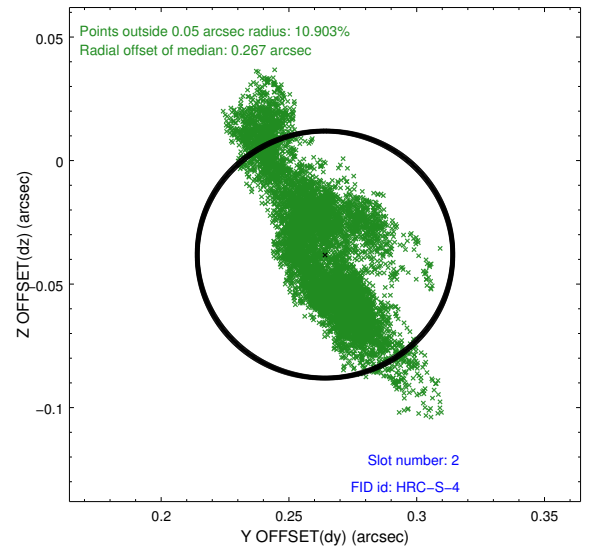
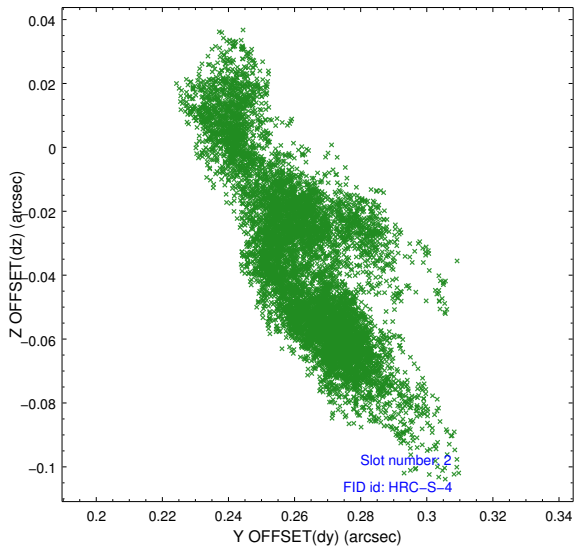
### 2.5.1 Slot 0



## 2.5.2 Slot 1

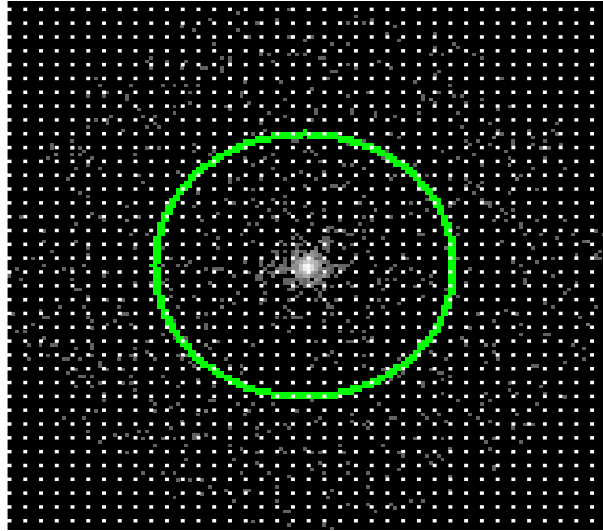


### 2.5.3 Slot 2

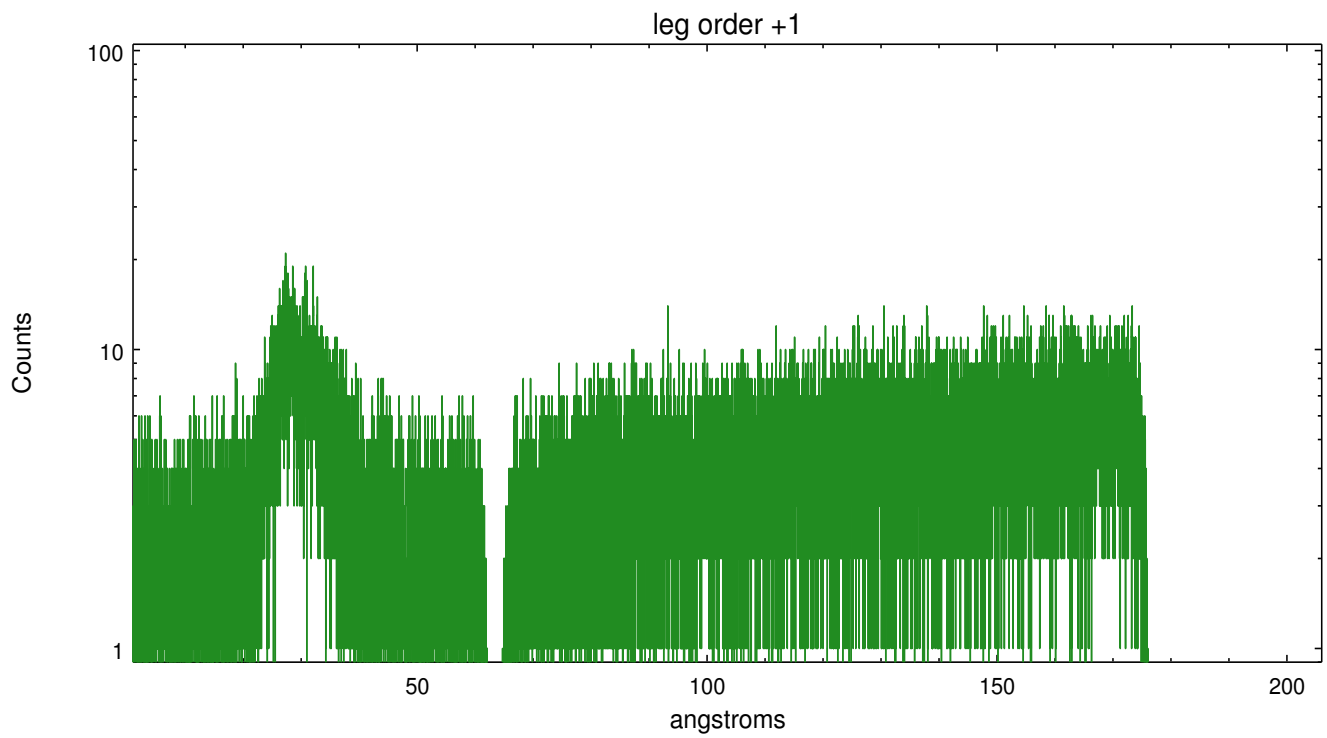
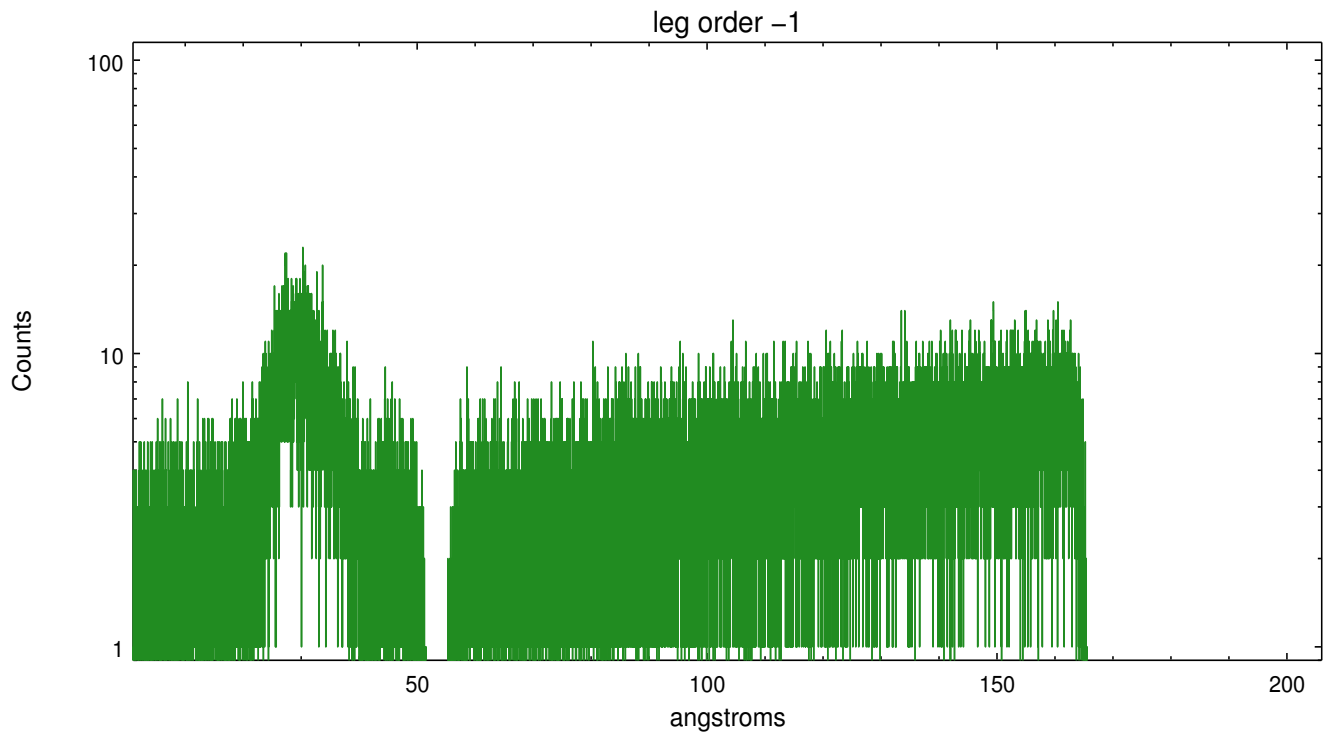


### 3 Gratings

#### 3.1 LETG Arm



LETG Zero Order



# A Summary

## A.1 Status

V&V Scientist	Joy Nichols
V&V Date (YYYY-MM-DD)	2017.08.31
V&V Edition	1
V&V Disposition and Status	OK
V&V Charge Time	34.406433261633

## A.2 Comments