

V&V Reference Report

L2 ASCDS Version : 10.6

Observation 16697 - L2 Version 1
Chandra X-Ray Center

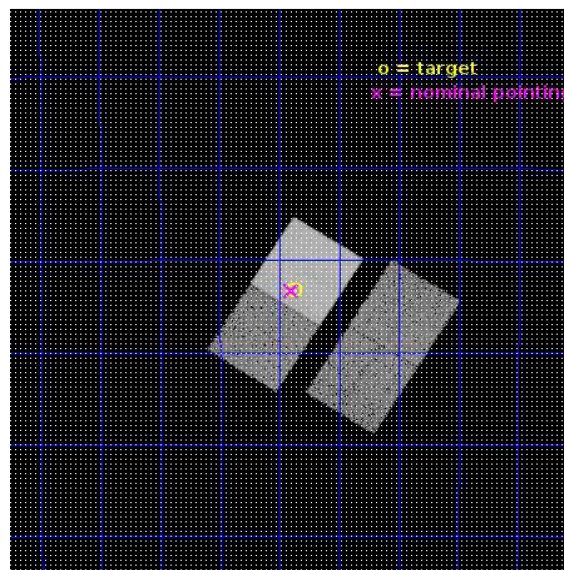
L2 Processing Date : Nov 24 2017

Contents

1	Front	2
2	OBI	3
2.1	OBI	3
2.1.1	Images	3
2.1.2	Bias	3
2.1.3	Parameters	4
2.1.4	Events	4
2.2	Compared Parameters	5
2.3	Aspect	6
2.4	Star Slots	9
2.4.1	Slot 3	9
2.4.2	Slot 4	10
2.4.3	Slot 5	11
2.4.4	Slot 6	12
2.4.5	Slot 7	13
2.5	FID Slots	14
2.5.1	Slot 0	14
2.5.2	Slot 1	15
2.5.3	Slot 2	16
A	Summary	17
A.1	Status	17
A.2	Comments	17

1 Front

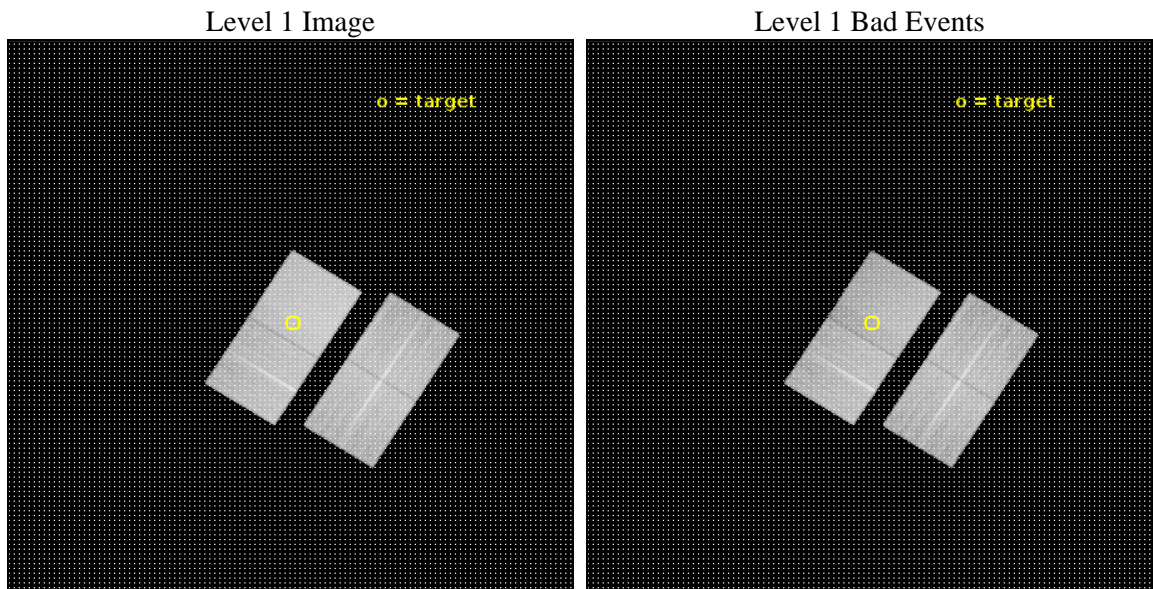
seq_num	401619	Sequence number
obs_id	16697	Observation id
title	Is there an HLX in the Lyman-alpha Galaxy Haro 11?	Proposal title
observer	Andrea Prestwich	Principal investigator
object	Haro 11	Source name
dtcycle	0	
cycle	P	events from which exps? Prim/Second/Both
ra_targ	9.219583	Observer's specified target RA [deg]
dec_targ	-33.554694	Observer's specified target Dec [deg]
ra_nom	9.2251841968878	Nominal RA [deg]
dec_nom	-33.555109801141	Nominal Dec [deg]
roll_nom	302.15975288973	Nominal Roll [deg]
revision	1	Processing version of data
ontime	24068.030258417	Sum of GTIs [s]
livetime	23753.563724465	Livetime [s]
ontime2	24064.766078115	Sum of GTIs [s]
ontime3	24067.948178411	Sum of GTIs [s]
ontime6	24067.989218473	Sum of GTIs [s]
ontime7	24068.030258417	Sum of GTIs [s]
l2events	145460	Number of level 2 events



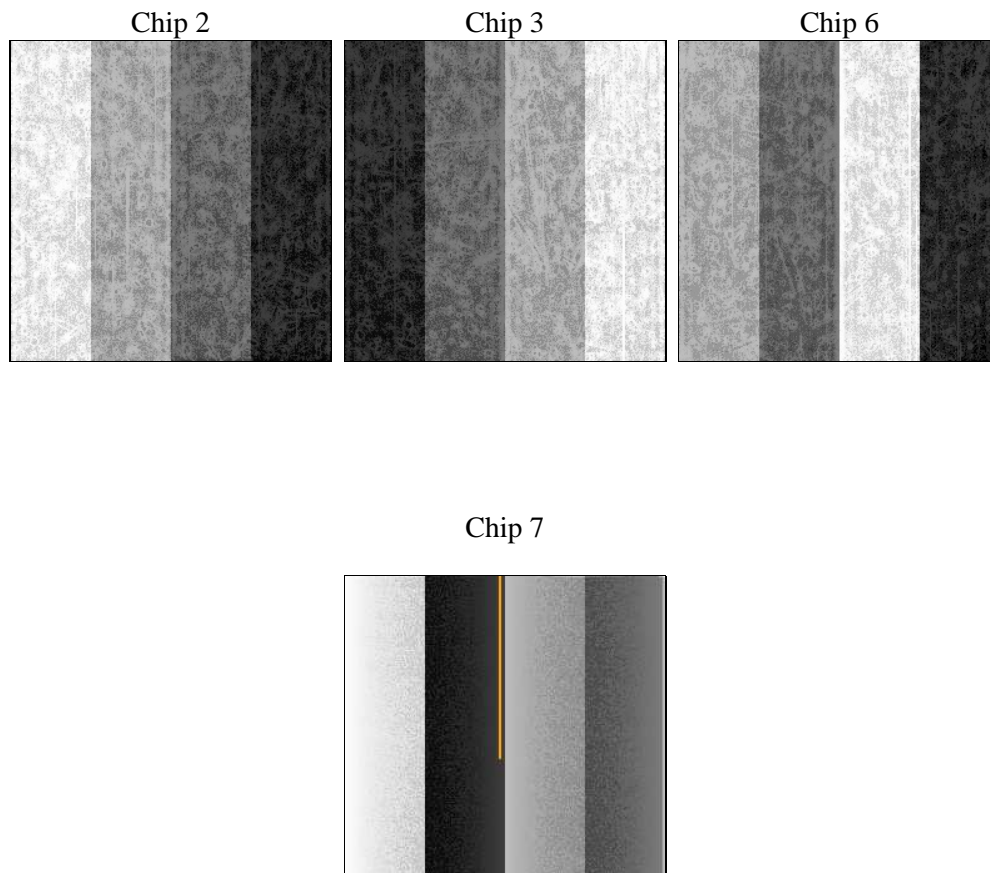
2 OBI

2.1 OBI

2.1.1 Images



2.1.2 Bias



2.1.3 Parameters

obi_num	1	Obi number	sched_exp_time	24000.000000	[s] Scheduled observation exposure time
ascdsver	10.6	Processing system revision	ontime	24068.030258417	Sum of GTIs [s]
caldsver	4.7.6	 	ontime2	24064.766078115	Sum of GTIs [s]
date	2017-11-25T03:40:12	Date and time of file creation	ontime3	24067.948178411	Sum of GTIs [s]
revision	1	Processing version of data	ontime6	24067.989218473	Sum of GTIs [s]
			ontime7	24068.030258417	Sum of GTIs [s]
			l1events	761064	Number of level 1 events

2.1.4 Events

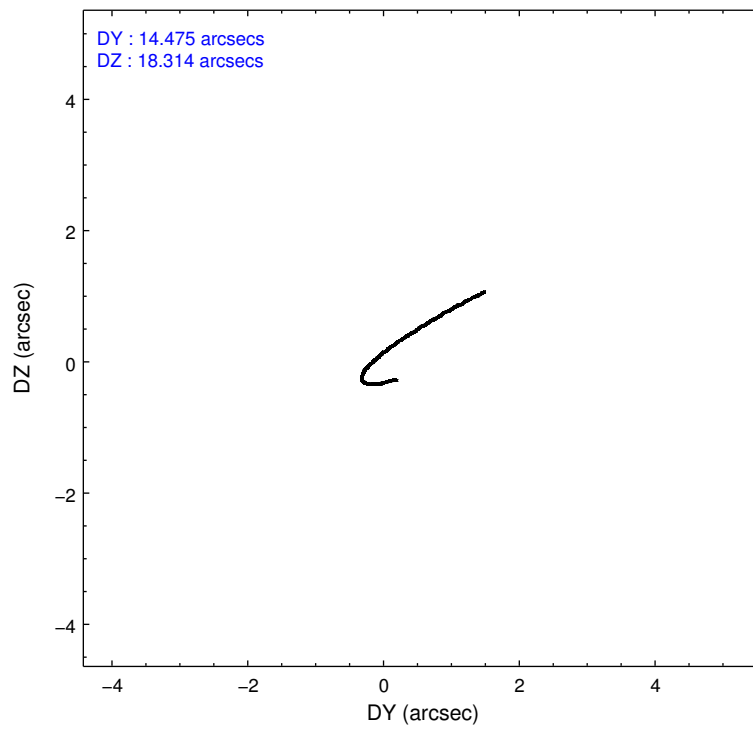
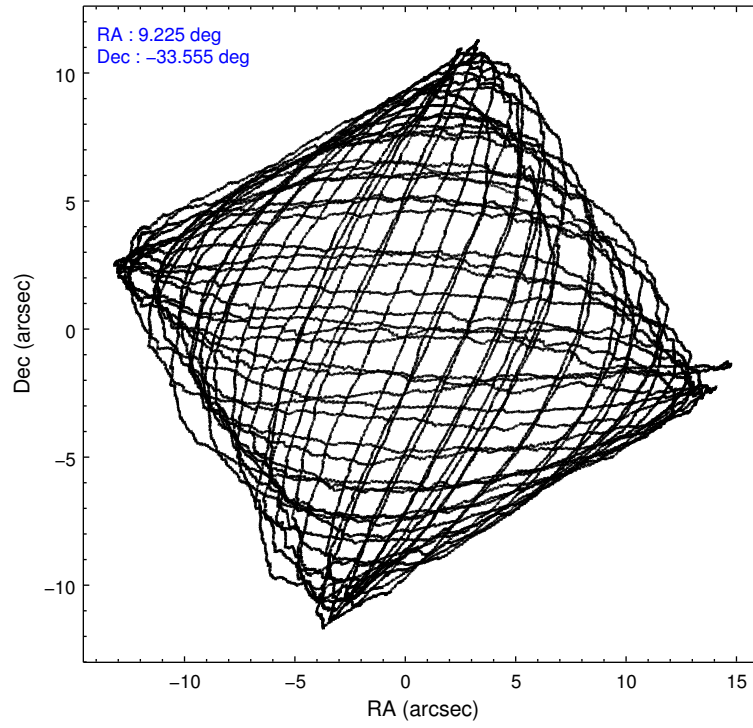
	ccd 2	ccd 3	ccd 6	ccd 7
level 1 events	179624	167558	185084	228798
rejected events	160780	149961	165272	129449
rejected %	89%	89%	89%	56%

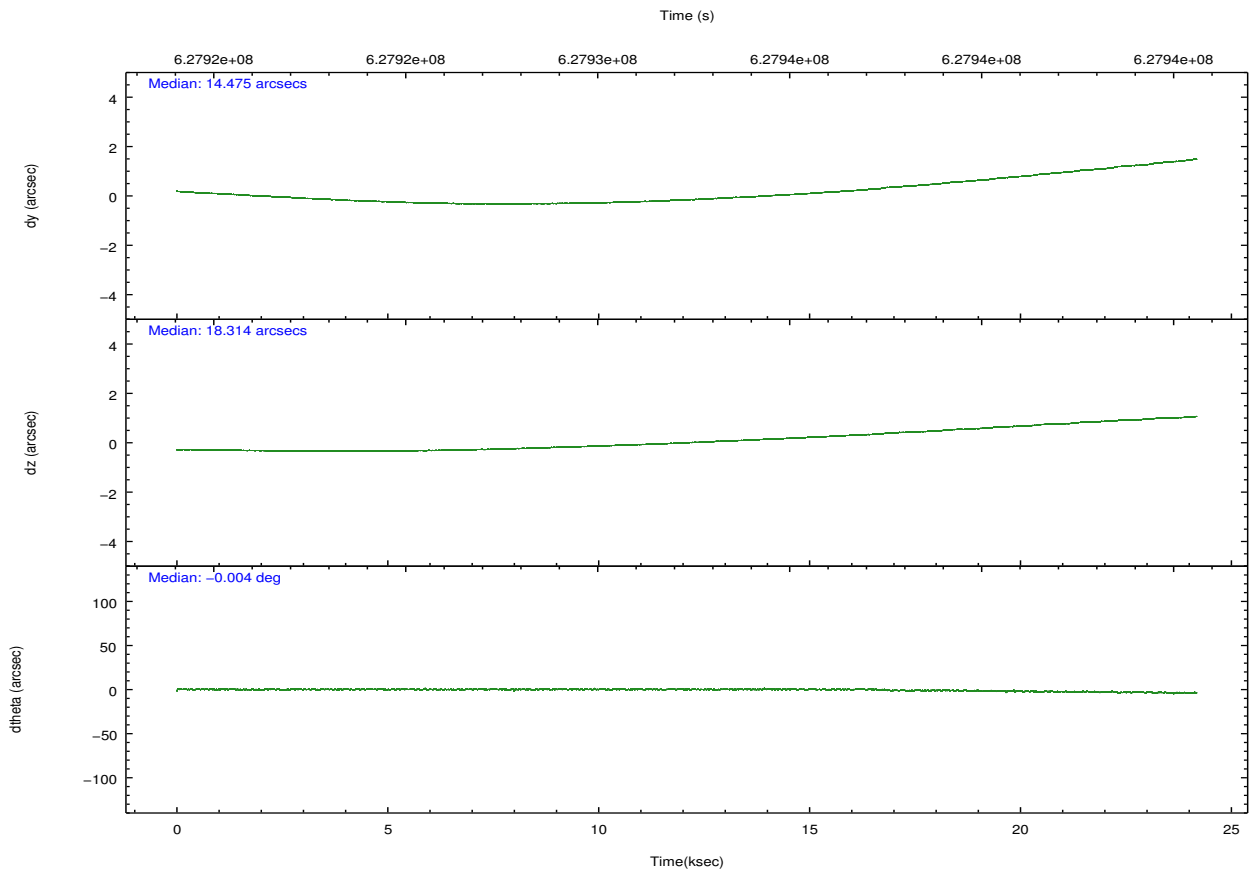
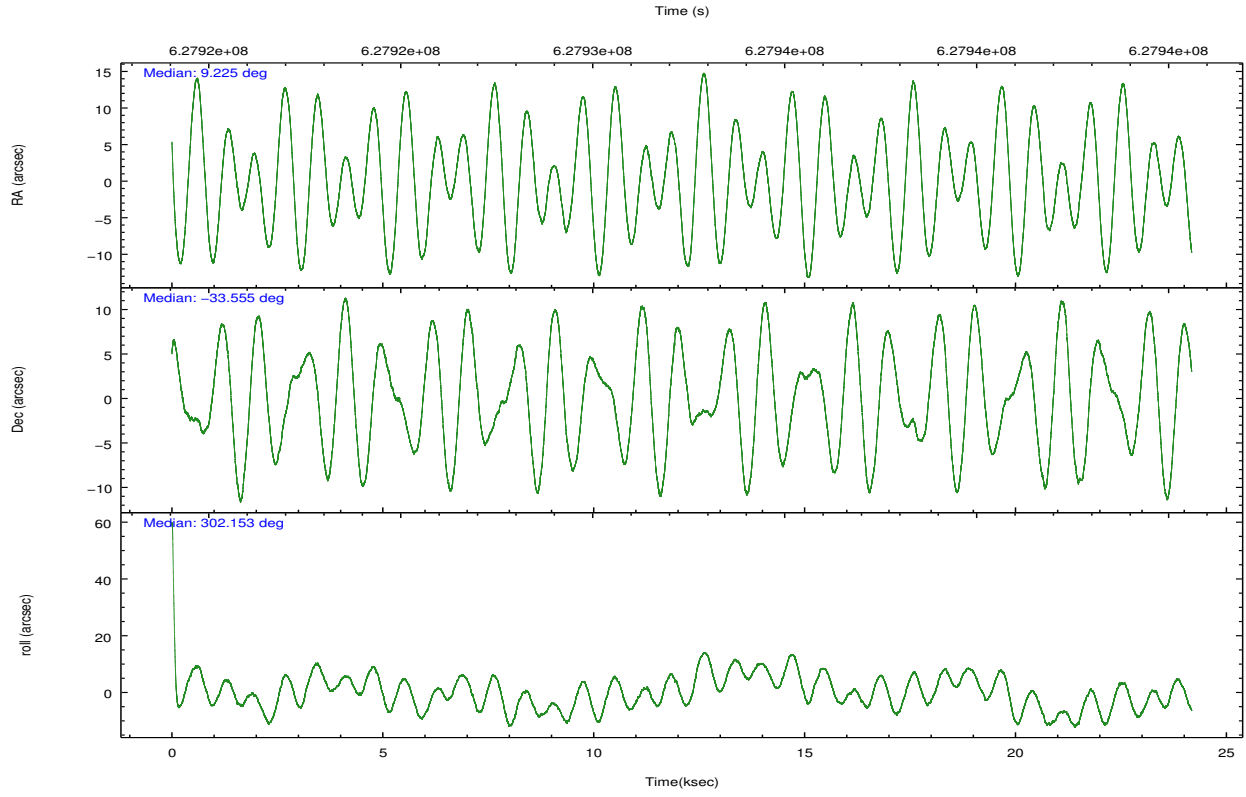
	ccd 2	ccd 3	ccd 6	ccd 7
grade 0 events	6656	6096	6397	8570
	3%	3%	3%	3%
grade 1 events	103	100	97	315
	0%	0%	0%	0%
grade 2 events	4563	3824	4729	20764
	2%	2%	2%	9%
grade 3 events	1873	1840	1919	7869
	1%	1%	1%	3%
grade 4 events	1979	1958	1910	7874
	1%	1%	1%	3%
grade 5 events	6905	8406	8138	22553
	3%	5%	4%	9%
grade 6 events	3775	3886	4867	54294
	2%	2%	2%	23%
grade 7 events	153770	141448	157027	106559
	85%	84%	84%	46%

2.2 Compared Parameters

Parameter	Planned	Actual	Parameter	Planned	Actual
Instrument	ACIS	ACIS	Obspar format version number	7	7
Detector	ACIS-2367	ACIS-2367	Obspar file type	PREDICTED	ACTUAL
Grating	NONE	NONE	Obspar update status	NONE	UPDATED
Data mode	FAINT	FAINT	CCD I0 on	N	N
Observation mode	POINTING	POINTING	CCD I1 on	N	N
[deg] Pointing RA	9.195879	9.225184196887803	CCD I2 on	O1	Y
[deg] Pointing Dec	-33.542622	-33.55510980114098	CCD I3 on	O2	Y
[deg] Pointing Roll	301.986903	302.15975288973	CCD S0 on	N	N
[mm] SIM focus pos	-0.684267	-0.6828225247311905	CCD S1 on	N	N
[mm] SIM defocus	0	0.001444936568705701	CCD S2 on	Y	Y
[mm] SIM translation stage pos	-190.132523	-190.1425803651734	CCD S3 on	Y	Y
[mm] SIM translation stage offset	0	0.01005778216563158	CCD S4 on	N	N
[s] Observation start time (MET)	627920397.184000	627919221.89961	CCD S5 on	N	N
Observation start date	2017-11-24T14:18:48	2017-11-24T14:00:21	Number of optional ACIS chips dropped	0	0
[s] Observation end time (MET)	627944397.184000	627945515.2011499	On-chip summing requested	N	N
Observation end date	2017-11-24T20:58:48	2017-11-24T21:18:35	Subarray requested	NONE	NONE
Read mode	TIMED	TIMED	Alternating exposures requested	N	N
			[s] Primary exposure time	0.000000	3.1

2.3 Aspect



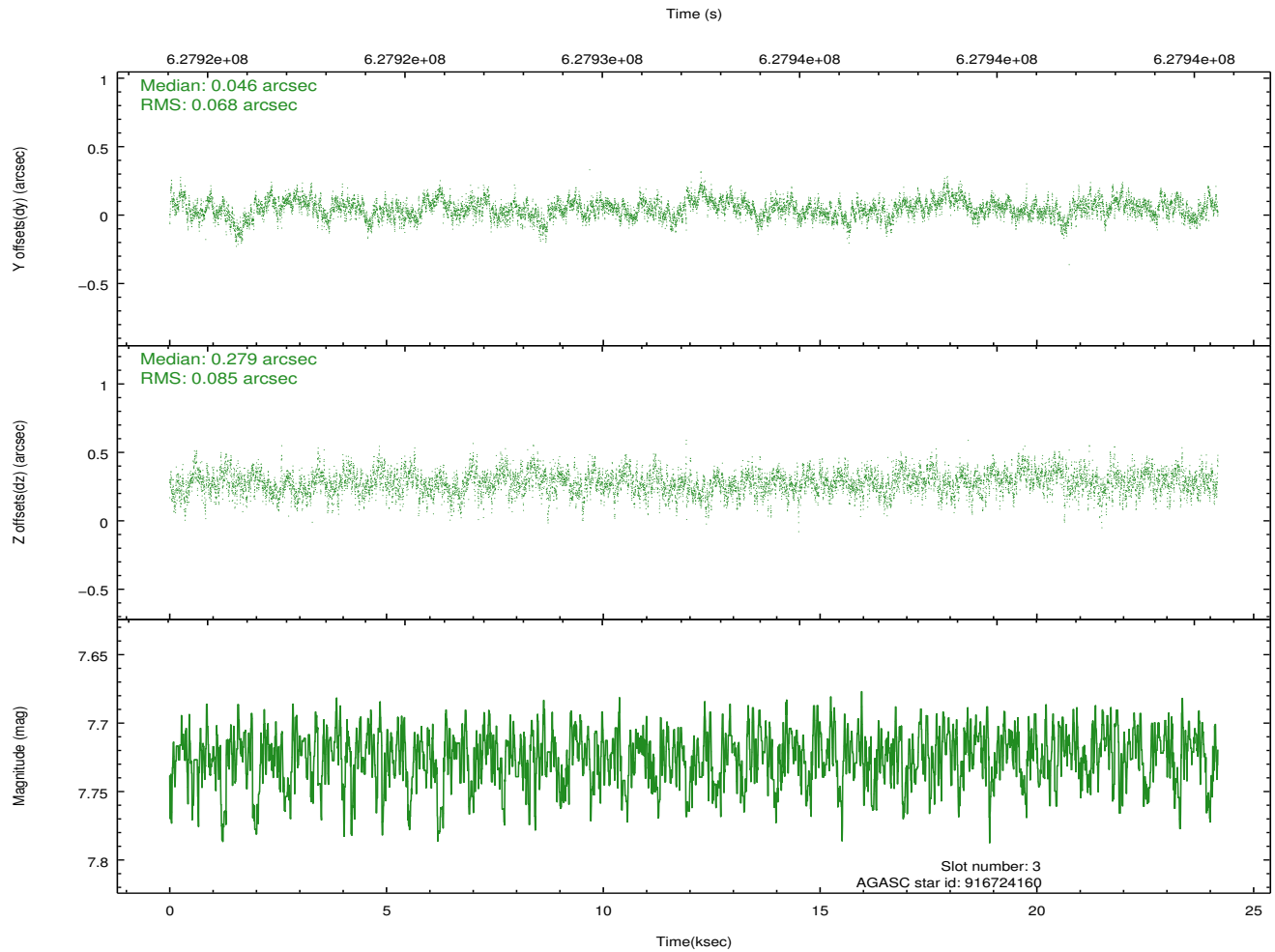
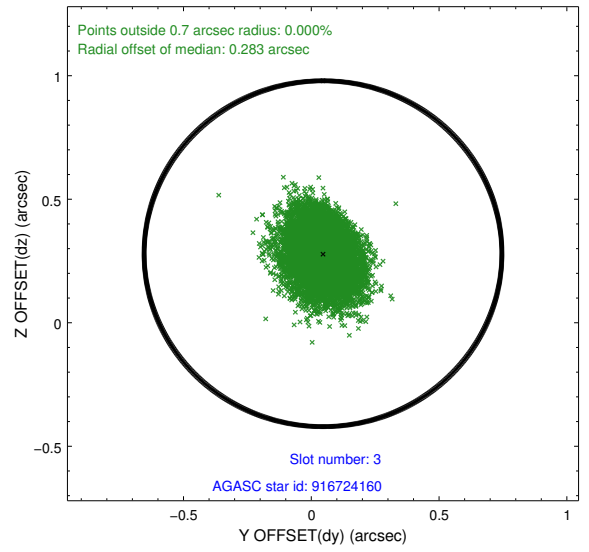
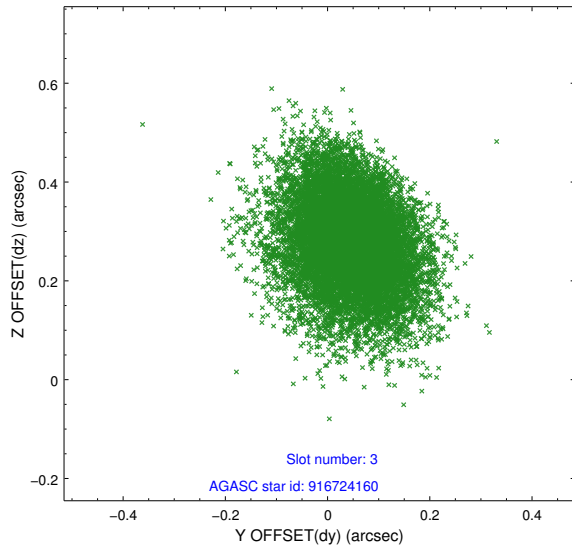


Slot Statistics

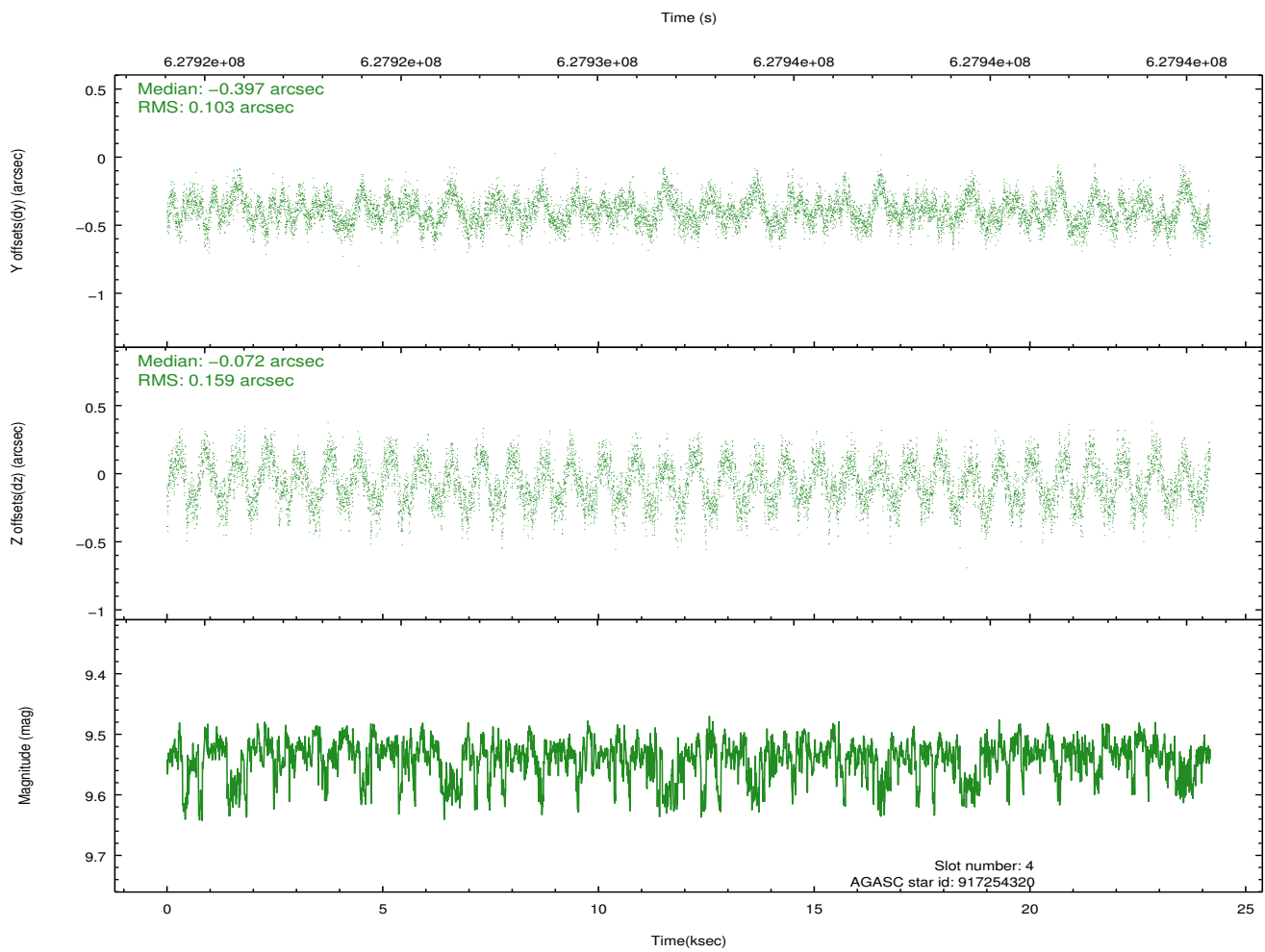
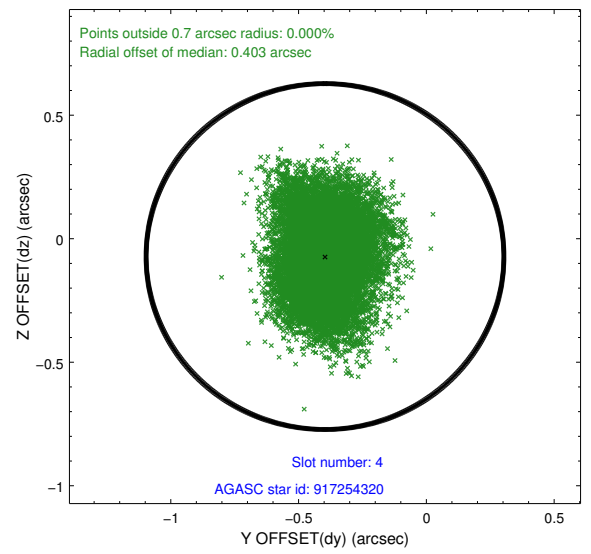
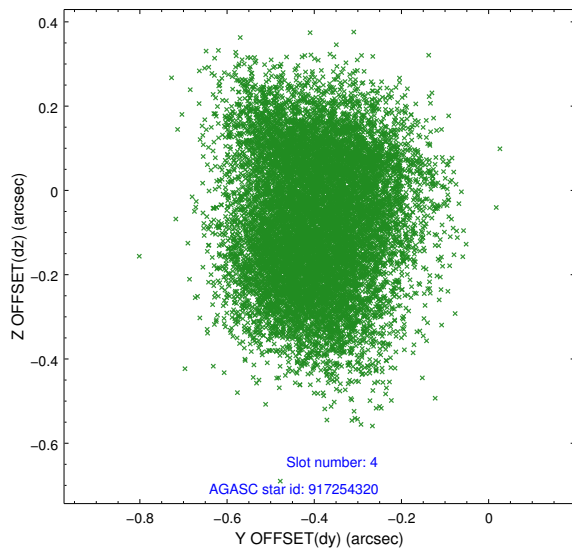
slot	status	used	id	mag	n_pts	med_dy	med_dz	dr1	dr2	ra	dec	mean_y	mean_z
0	FID		ACIS-S-2	7.06	5897	-0.179	-0.104	0.019	0.040	0.000000	0.000000	-767.82	-1739.97
1	FID		ACIS-S-4	7.17	5895	0.486	0.115	0.014	0.023	0.000000	0.000000	2146.08	168.59
2	FID		ACIS-S-5	7.16	5897	-0.335	-0.000	0.017	0.040	0.000000	0.000000	-1820.64	162.30
3	GUIDE	used	916724160	7.72	11789	0.046	0.279	0.114	0.193	8.470787	-33.411650	-1546.92	-1602.18
4	GUIDE	used	917254320	9.54	11768	-0.397	-0.072	0.205	0.317	9.460919	-33.507245	314.24	741.66
5	GUIDE	used	917254864	8.63	11785	-0.447	0.035	0.133	0.224	9.625670	-33.474473	479.49	1223.37
6	GUIDE	used	917255288	9.74	11765	0.578	-0.656	0.172	0.292	9.737859	-33.199627	-177.89	2036.14
7	GUIDE	used	917510464	8.38	11787	0.221	0.406	0.113	0.187	9.054947	-33.896401	858.30	-1031.22

2.4 Star Slots

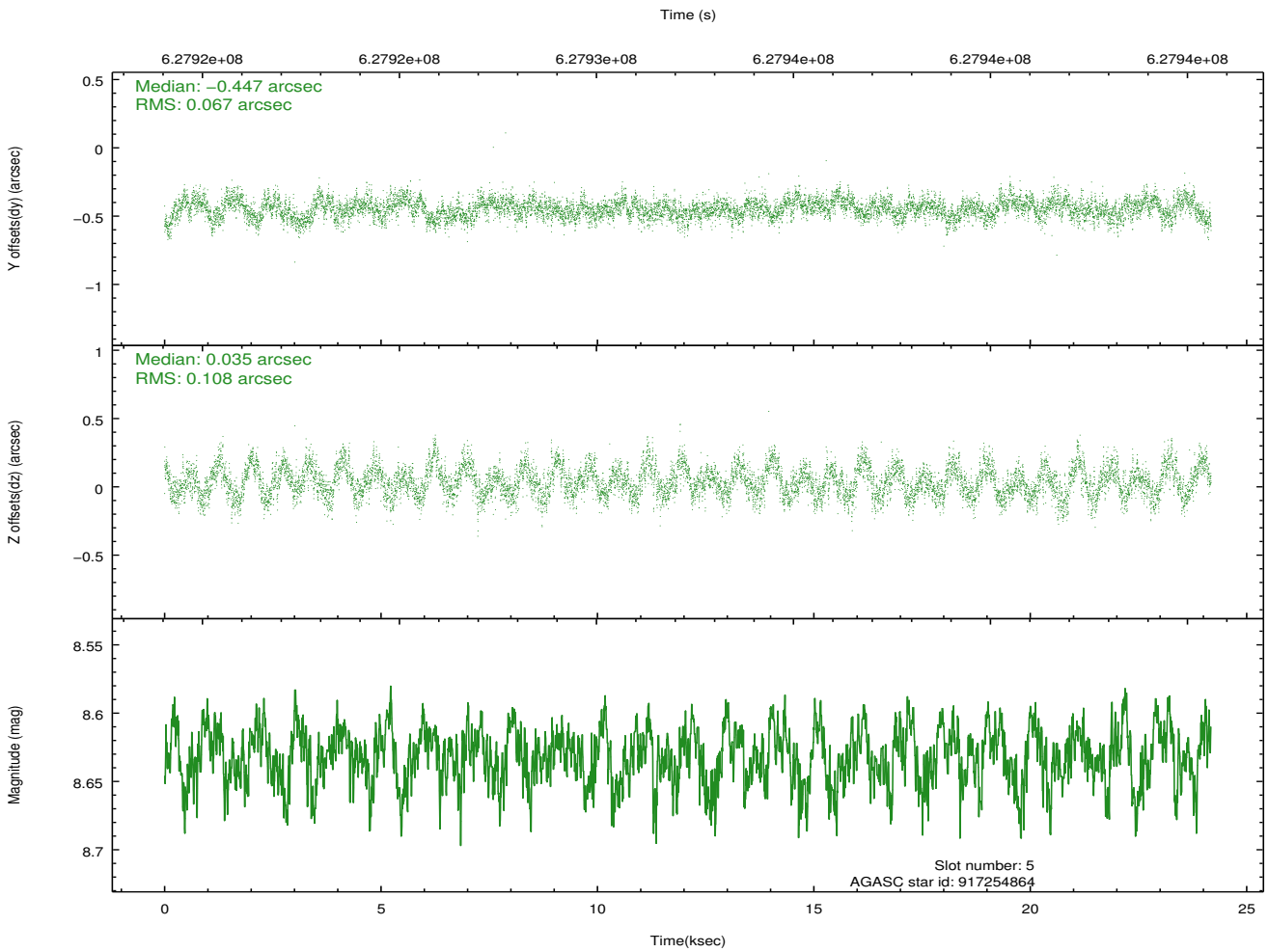
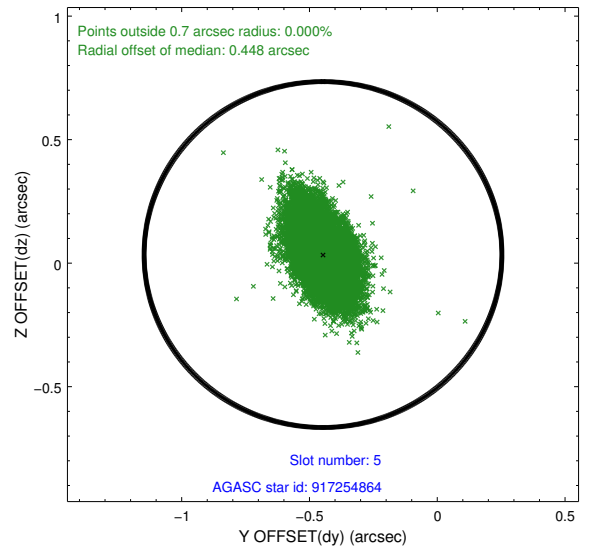
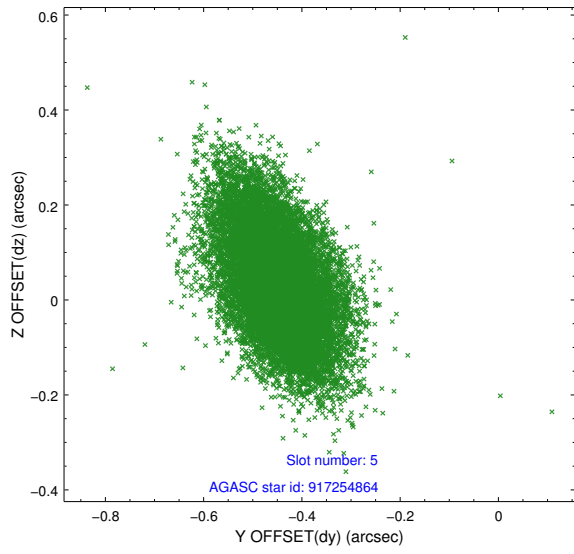
2.4.1 Slot 3



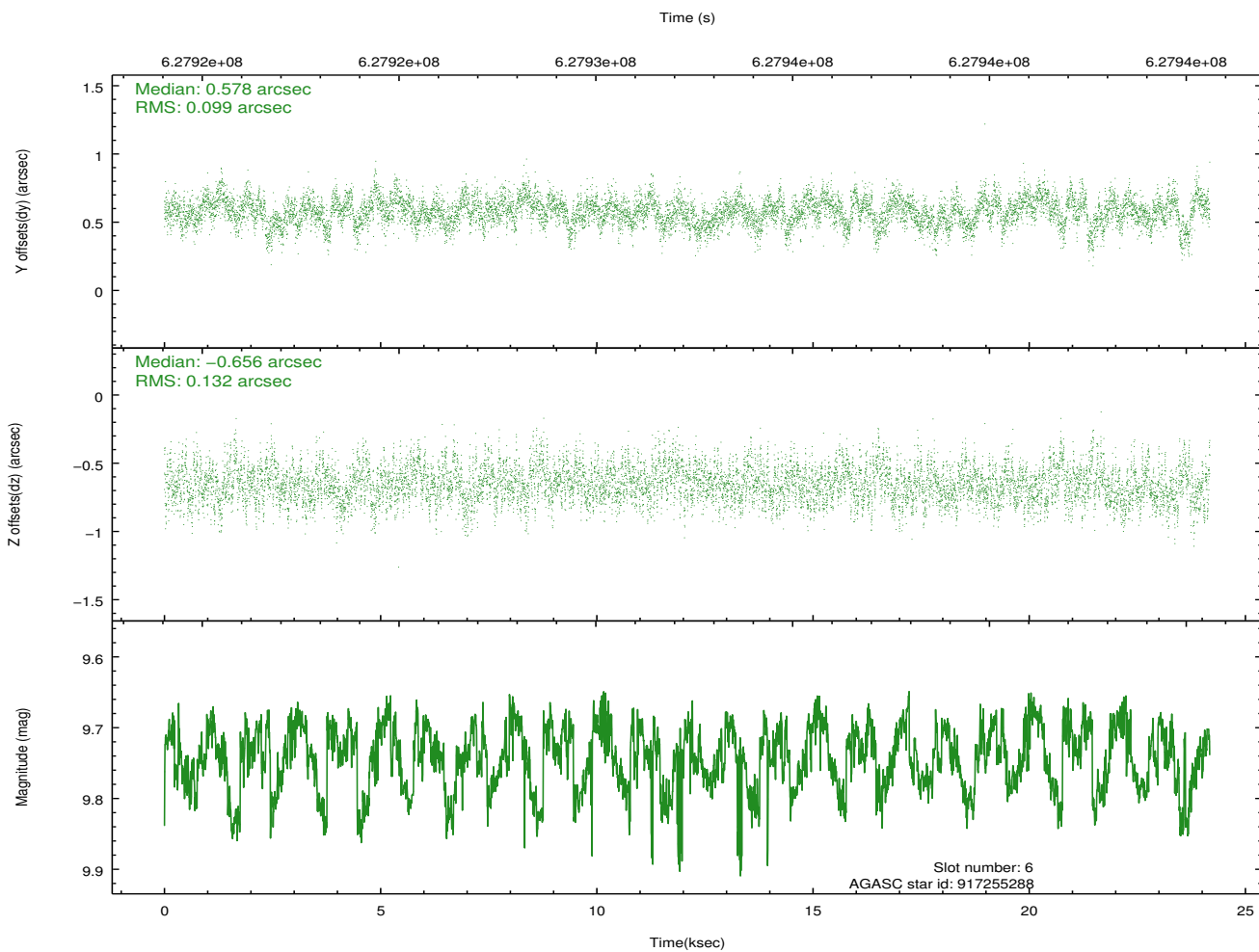
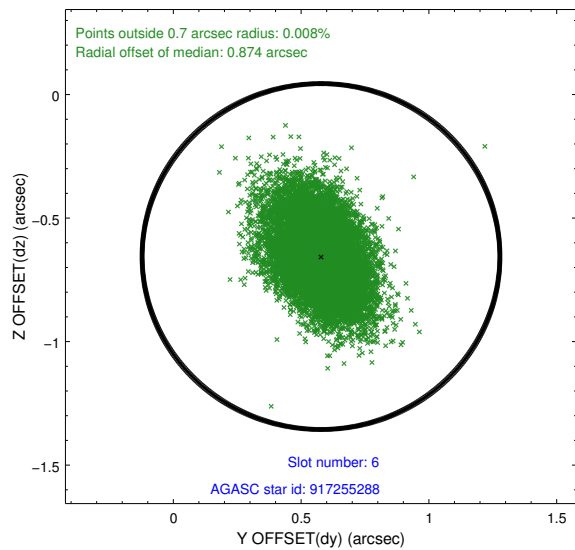
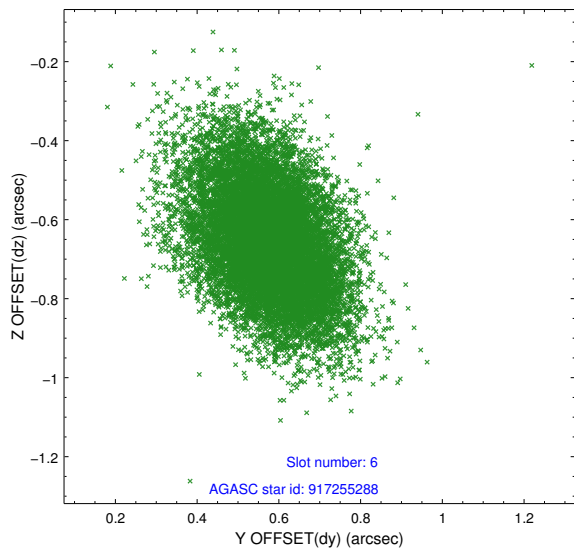
2.4.2 Slot 4



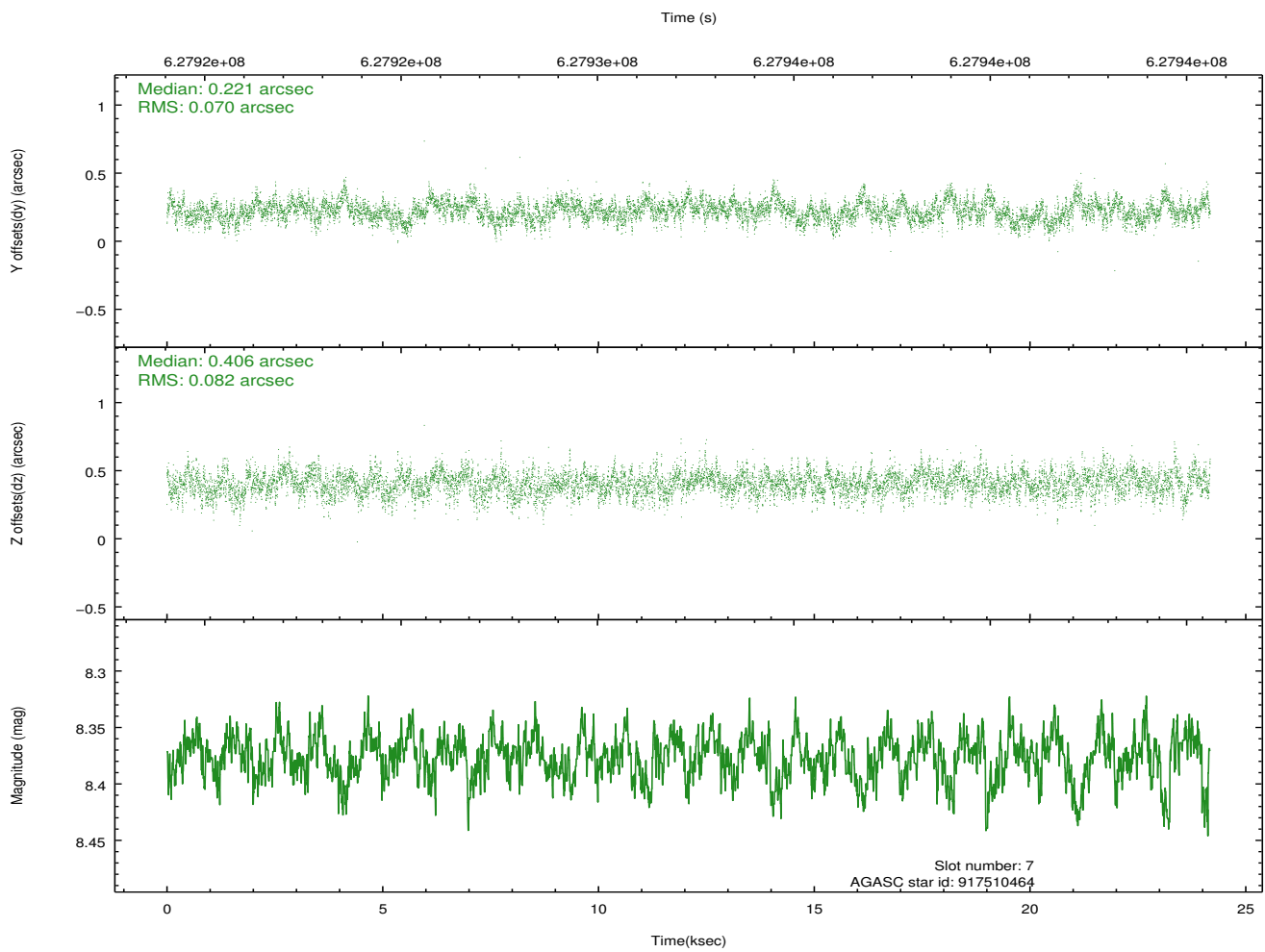
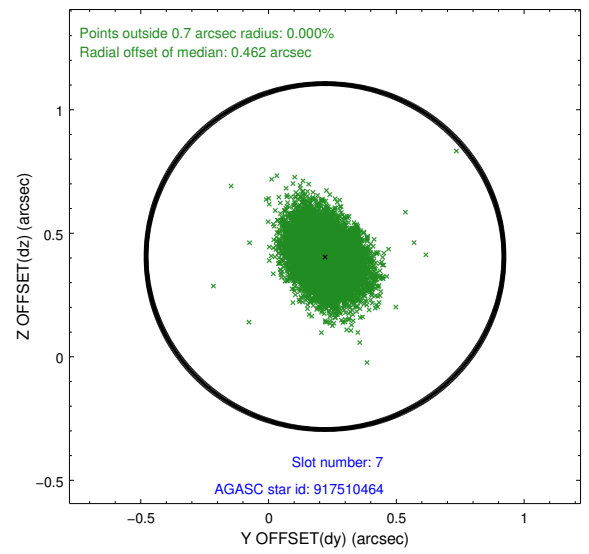
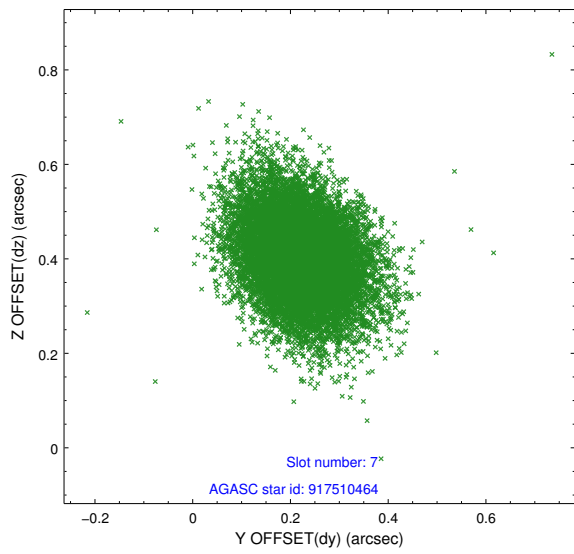
2.4.3 Slot 5



2.4.4 Slot 6

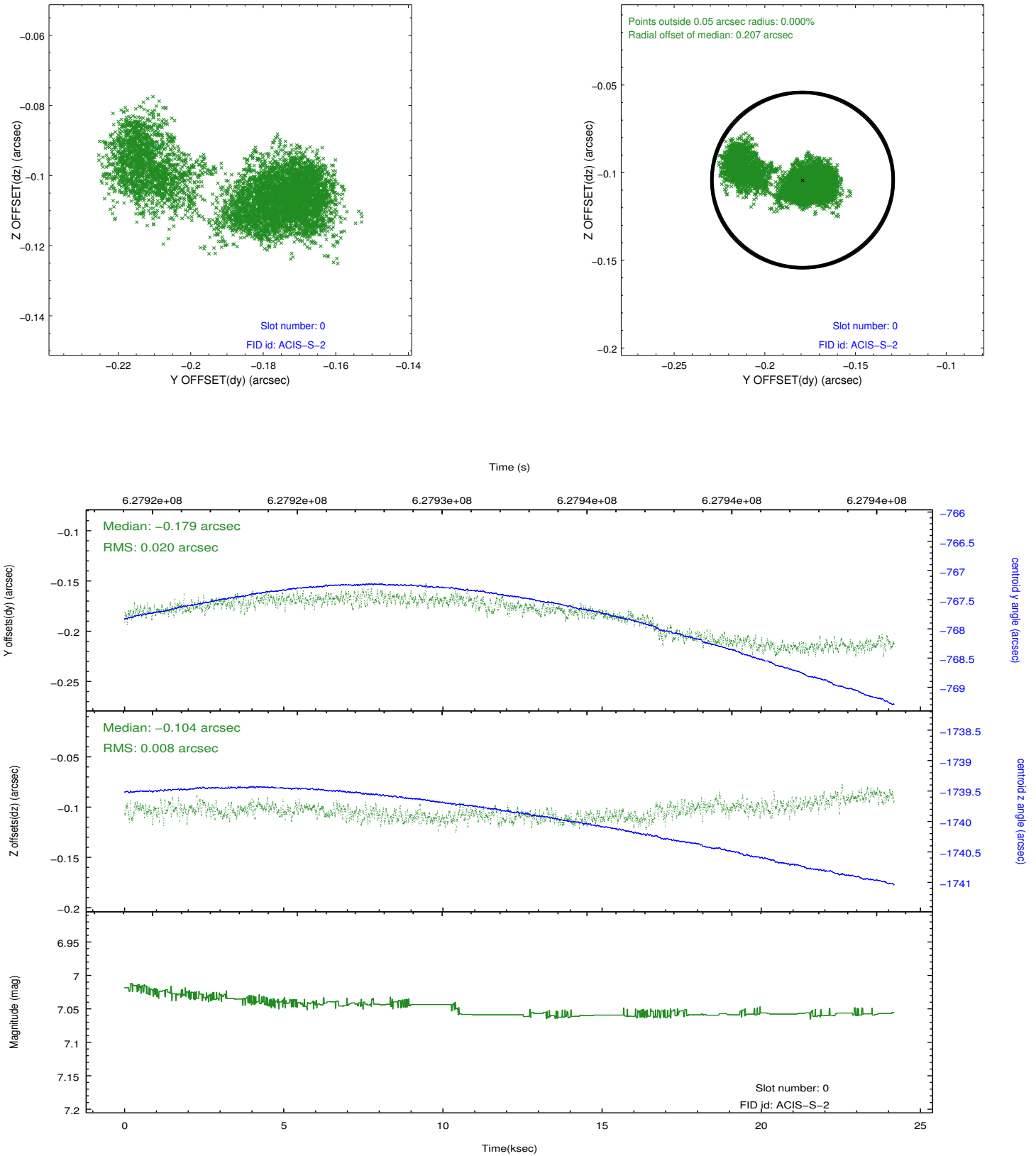


2.4.5 Slot 7

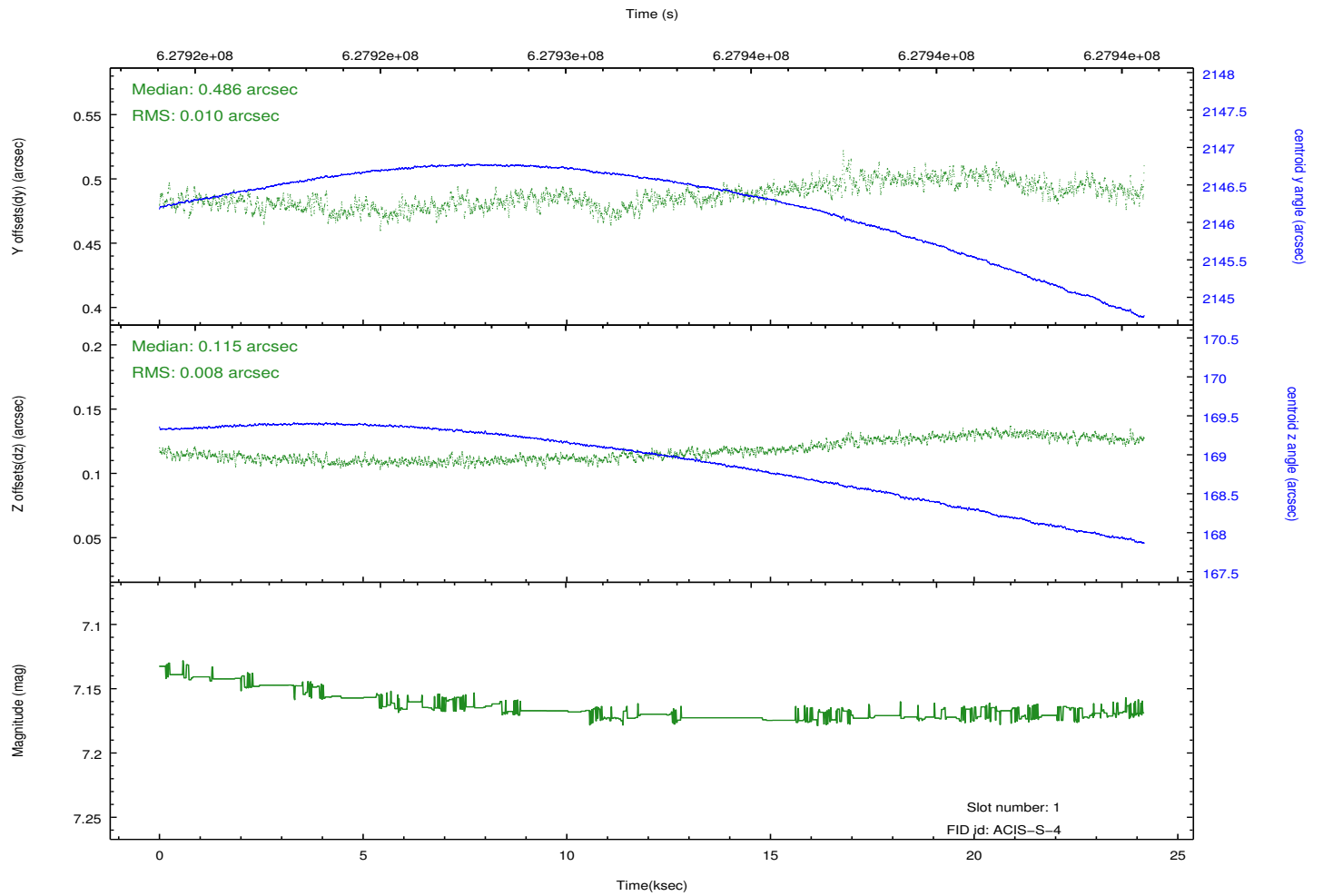
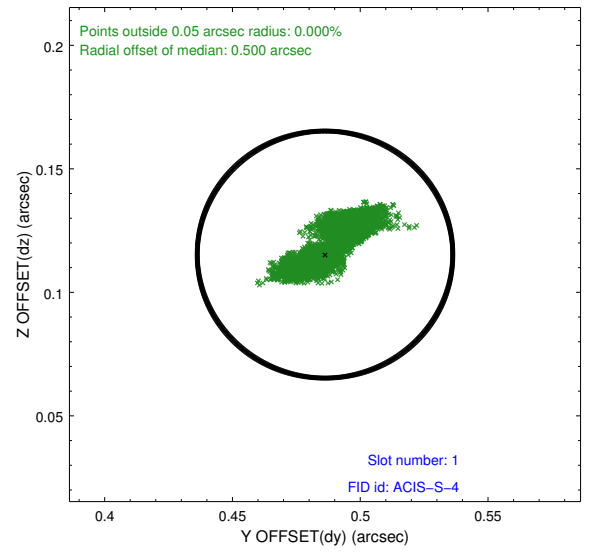
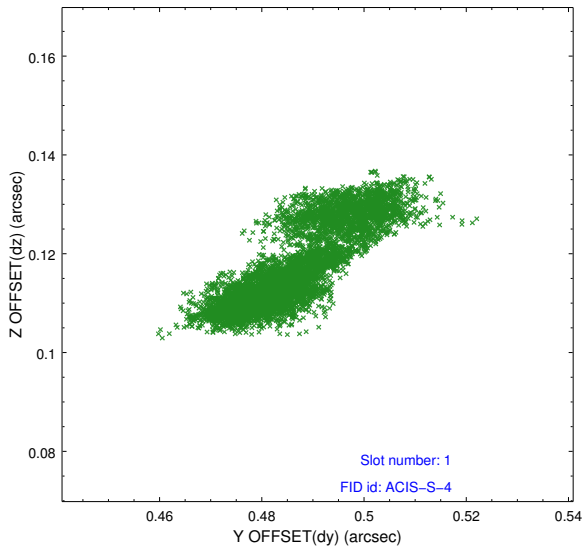


2.5 FID Slots

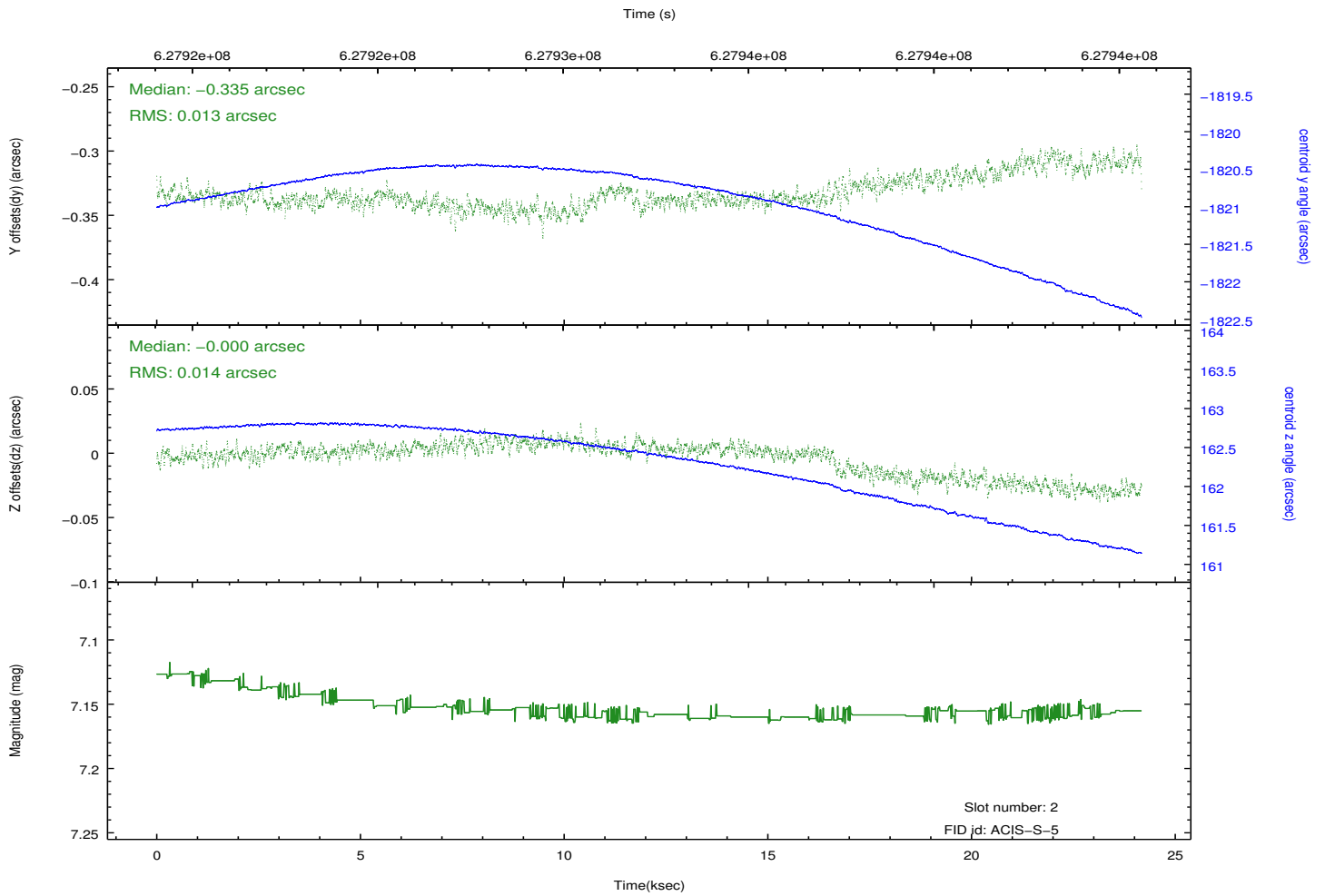
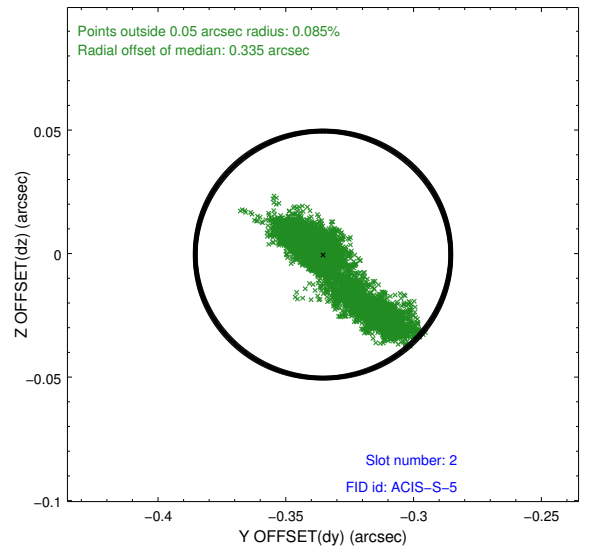
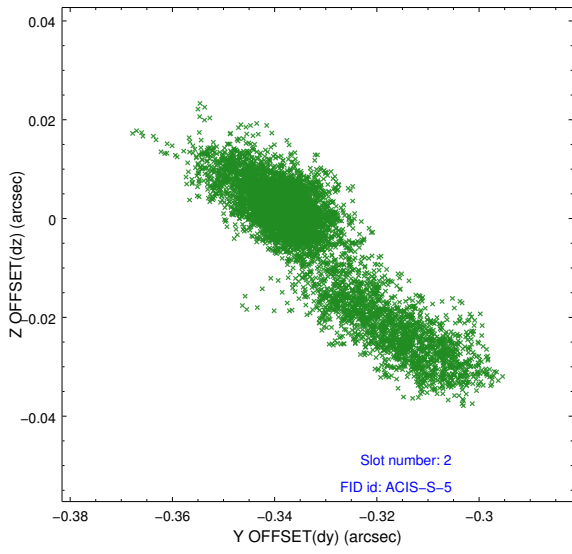
2.5.1 Slot 0



2.5.2 Slot 1



2.5.3 Slot 2



A Summary

A.1 Status

V&V Scientist	Joy Nichols
V&V Date (YYYY-MM-DD)	2017.11.27
V&V Edition	1
V&V Disposition and Status	OK
V&V Charge Time	24.068030258417

A.2 Comments