

V&V Reference Report

L2 ASCDS Version : 10.5.4

Observation 19599 - L2 Version 1
Chandra X-Ray Center

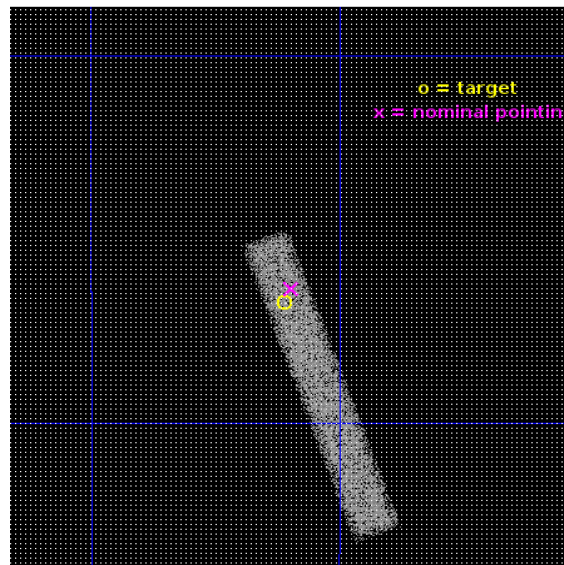
L2 Processing Date : Apr 25 2017

Contents

1	Front	2
2	OBI	3
2.1	OBI	3
2.1.1	Images	3
2.1.2	Bias	3
2.1.3	Parameters	4
2.1.4	Events	4
2.2	Compared Parameters	5
2.3	Aspect	6
2.4	Star Slots	9
2.4.1	Slot 3	9
2.4.2	Slot 4	10
2.4.3	Slot 5	11
2.4.4	Slot 6	12
2.4.5	Slot 7	13
2.5	FID Slots	14
2.5.1	Slot 0	14
2.5.2	Slot 1	15
2.5.3	Slot 2	16
A	Summary	17
A.1	Status	17
A.2	Comments	17

1 Front

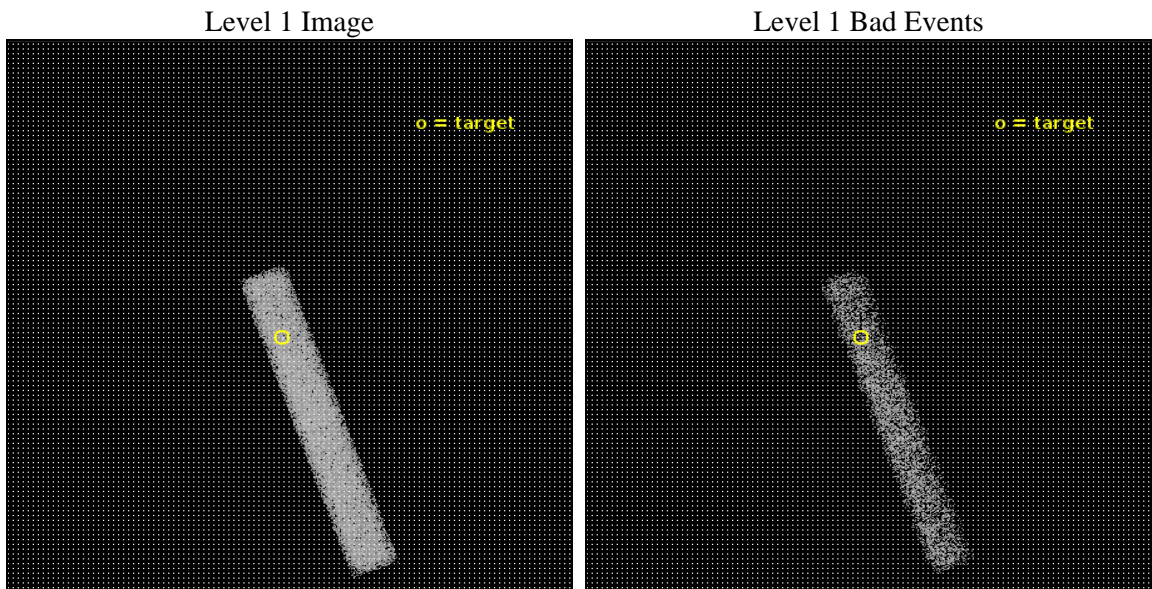
seq_num	401876	Sequence number
obs_id	19599	Observation id
title	Crust cooling of accretion-heated neutron stars	Proposal title
observer	Rudy Wijnands	Principal investigator
object	MXB 1659-298	Source name
dtcycle	0	
cycle	P	events from which exps? Prim/Second/Both
ra_targ	255.52725	Observer's specified target RA [deg]
dec_targ	-29.945581	Observer's specified target Dec [deg]
ra_nom	255.52399861537	Nominal RA [deg]
dec_nom	-29.939239014398	Nominal Dec [deg]
roll_nom	69.754993216965	Nominal Roll [deg]
revision	1	Processing version of data
ontime	30069.516575217	Sum of GTIs [s]
livetime	27271.464334498	Livetime [s]
ontime7	30069.516575217	Sum of GTIs [s]
l2events	17315	Number of level 2 events



2 OBI

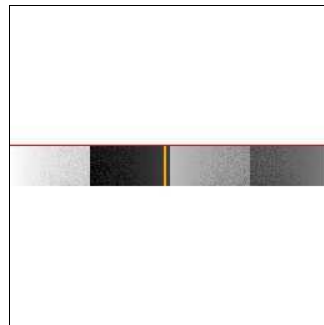
2.1 OBI

2.1.1 Images



2.1.2 Bias

Chip 7



2.1.3 Parameters

obi_num	0	Obi number	sched_exp_time	30000.000000	[s] Scheduled observation exposure time
ascdsver	10.5.4	Processing system revision	ontime	30069.516575217	Sum of GTIs [s]
caldbver	4.7.3	 	ontime7	30069.516575217	Sum of GTIs [s]
date	2017-04-25T16:13:35	Date and time of file creation	l1events	36077	Number of level 1 events
revision	1	Processing version of data			

2.1.4 Events

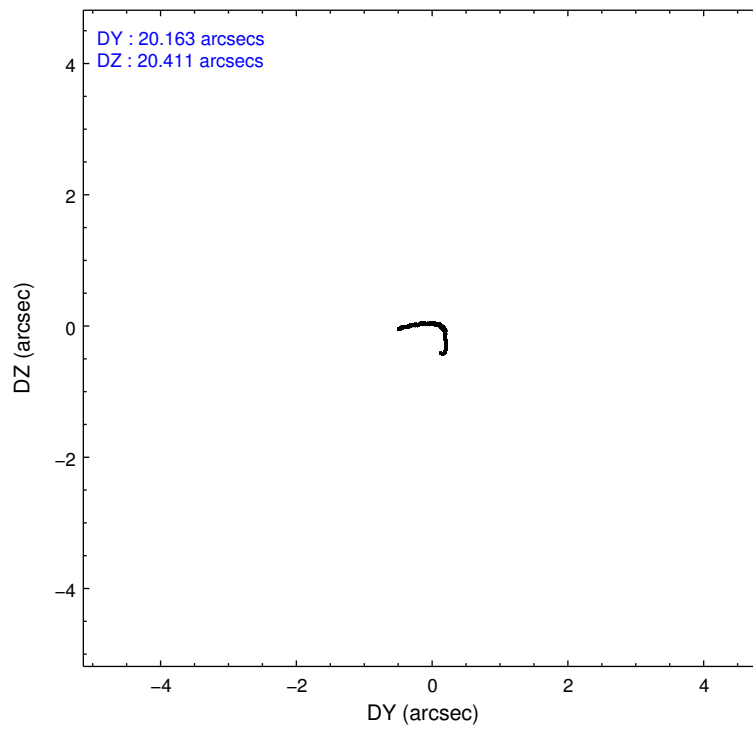
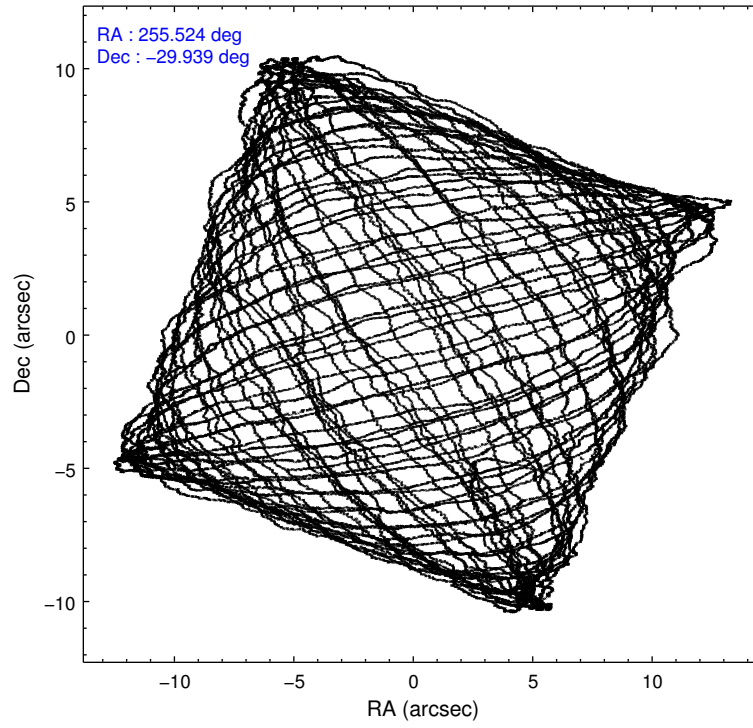
	ccd 7
level 1 events	36077
rejected events	17957
rejected %	49%

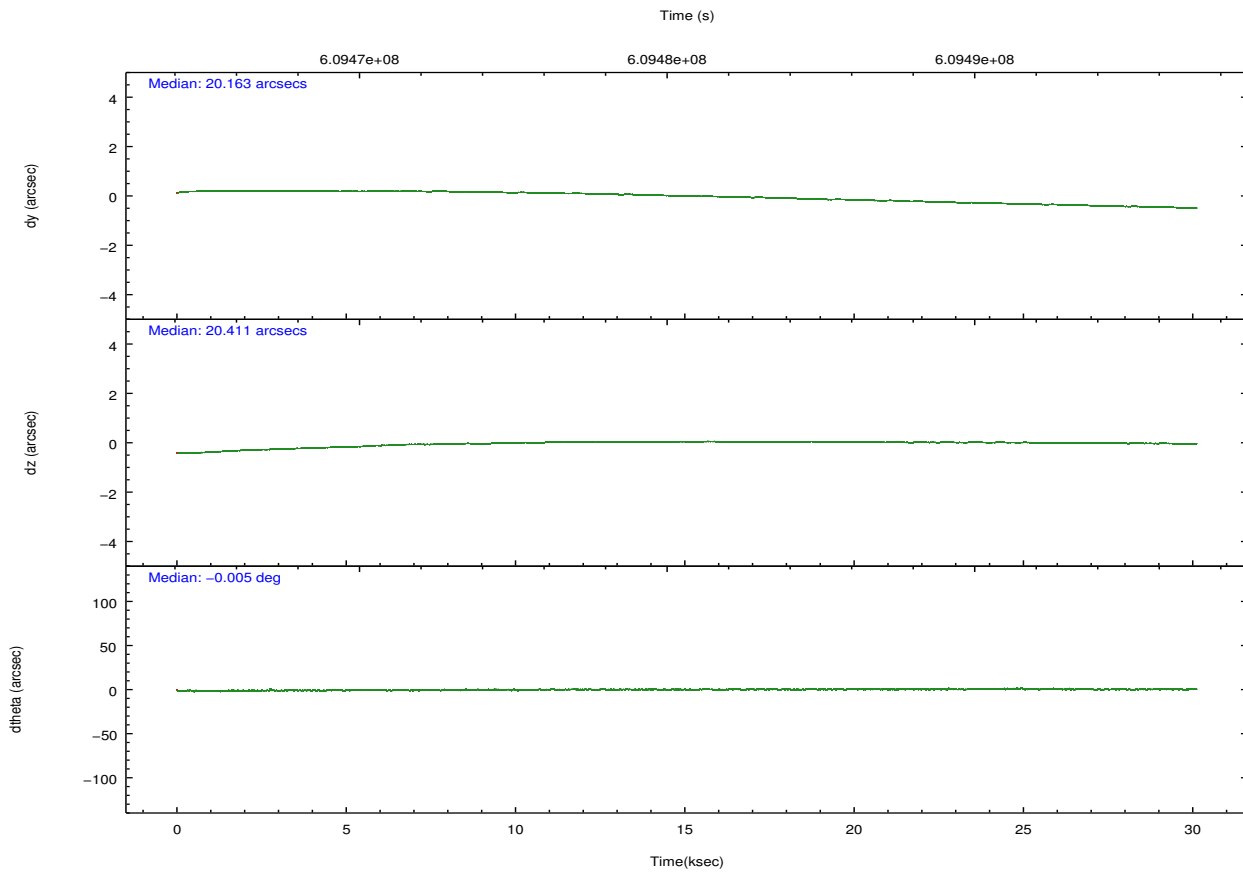
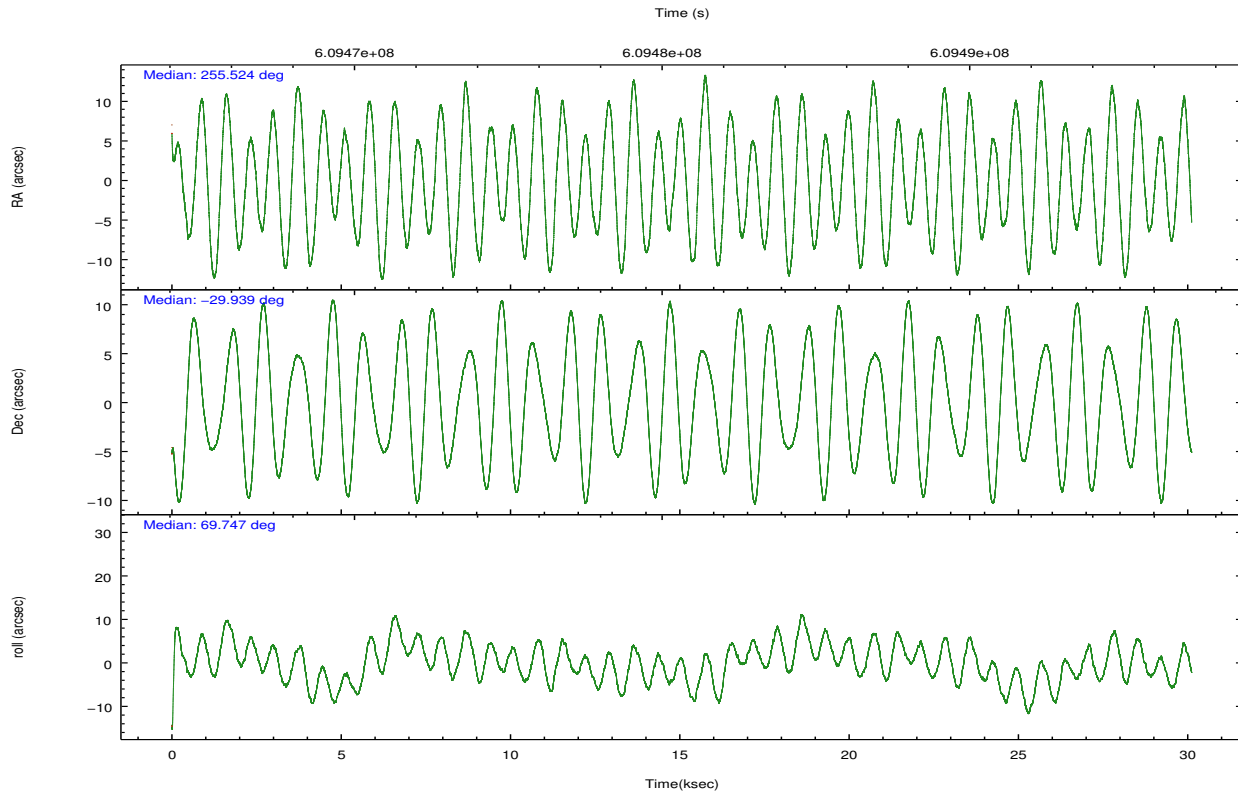
	ccd 7
grade 0 events	1920
	5%
grade 1 events	66
	0%
grade 2 events	3595
	9%
grade 3 events	2329
	6%
grade 4 events	2251
	6%
grade 5 events	3712
	10%
grade 6 events	8026
	22%
grade 7 events	14178
	39%

2.2 Compared Parameters

Parameter	Planned	Actual	Parameter	Planned	Actual
Instrument	ACIS	ACIS	Obspar format version number	7	7
Detector	ACIS-7	ACIS-7	Obspar file type	PREDICTED	ACTUAL
Grating	NONE	NONE	Obspar update status	NONE	UPDATED
Data mode	FAINT	FAINT	Number of optional ACIS chips dropped	0	0
Observation mode	POINTING	POINTING	On-chip summing requested	N	N
[deg] Pointing RA	255.529762	255.5239986153681	Subarray requested	CUSTOM	1/8
[deg] Pointing Dec	-29.966213	-29.93923901439794	Subarray start row	449	449
[deg] Pointing Roll	69.601258	69.75499321696515	Subarray row count	128	128
[s] Window start time (MET)	609379269.184000	609379269.184000	Alternating exposures requested	N	N
[s] Window stop time (MET)	612057669.184000	612057669.184000	[s] Primary exposure time	0.000000	0.4
[mm] SIM focus pos	-0.684267	-0.6828225247311905			
[mm] SIM defocus	0	0.001444936568705701			
[mm] SIM translation stage pos	-190.132523	-190.1425803651734			
[mm] SIM translation stage offset	0	0.01005778216563158			
[s] Observation start time (MET)	609465694.184000	609464676.99691			
Observation start date	2017-04-25T00:00:25	2017-04-24T23:44:36			
[s] Observation end time (MET)	609495694.184000	609497119.7862999			
Observation end date	2017-04-25T08:20:25	2017-04-25T08:45:19			
Read mode	TIMED	TIMED			

2.3 Aspect





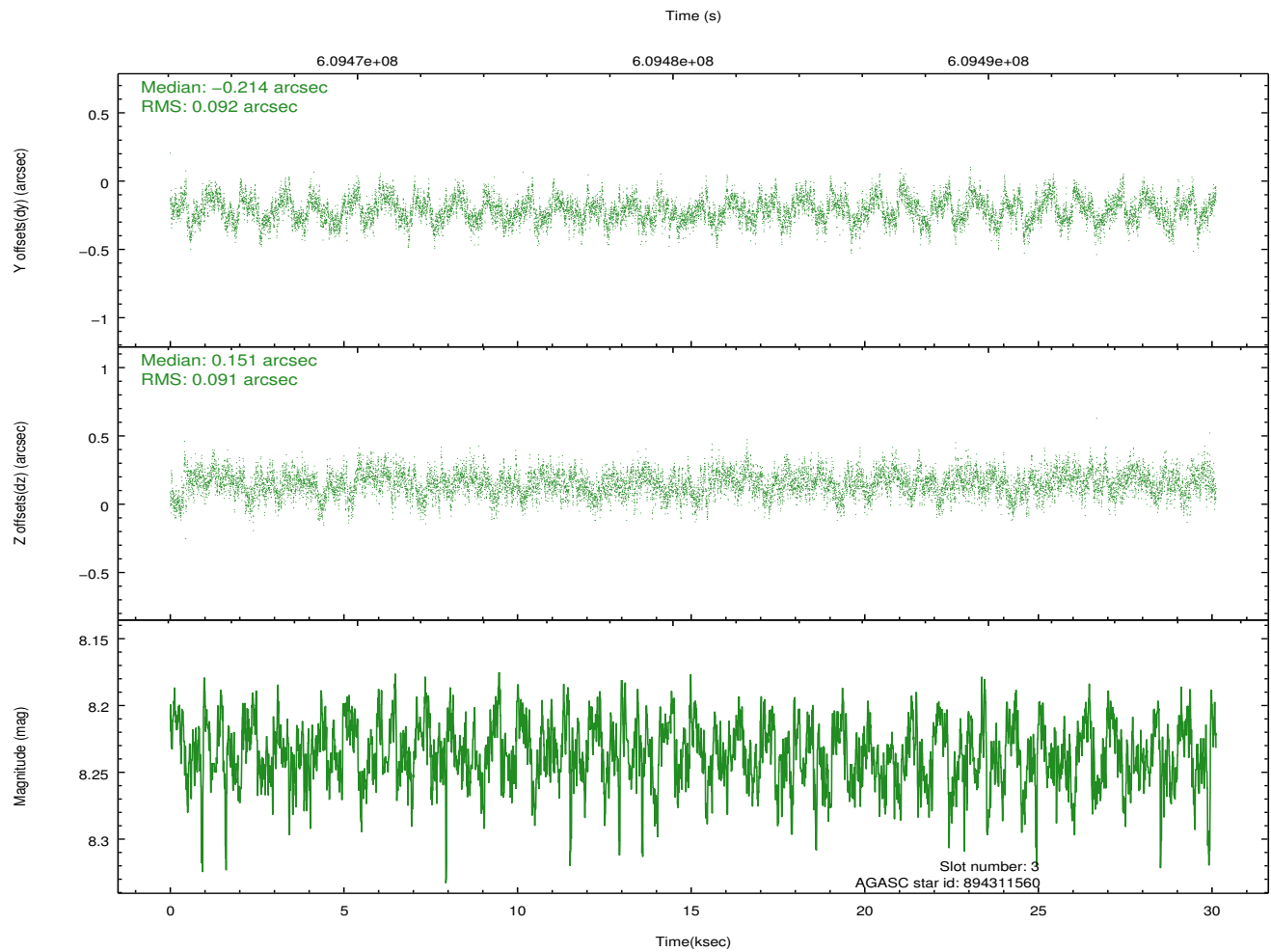
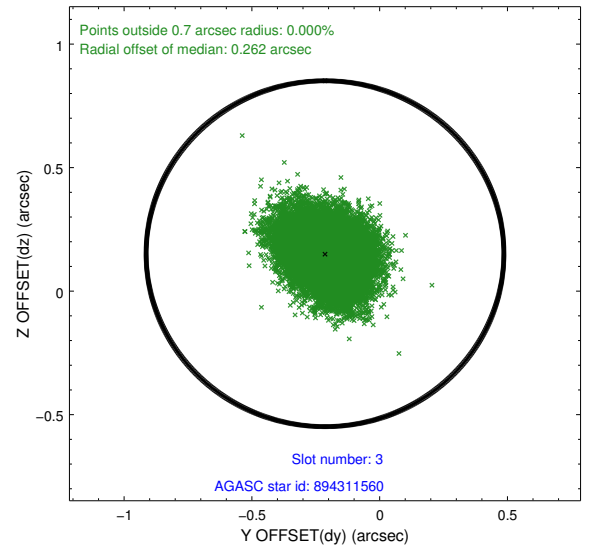
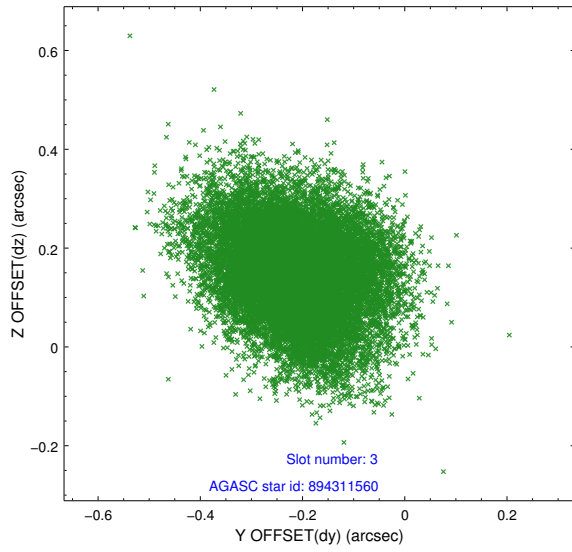
Slot Statistics

slot	status	used	id	mag	n_pts	med_dy	med_dz	dr1	dr2	ra	dec	mean_y	mean_z
0	FID		ACIS-S-2	6.98	7344	-0.277	-0.120	0.008	0.015	0.000000	0.000000	-773.47	-1741.97
1	FID		ACIS-S-4	7.11	7346	0.563	0.166	0.009	0.015	0.000000	0.000000	2140.58	166.78
2	FID		ACIS-S-5	7.08	7346	-0.317	-0.037	0.009	0.015	0.000000	0.000000	-1826.29	160.26
3	GUIDE	used	894311560	8.24	14681	-0.214	0.151	0.138	0.220	255.968048	-29.561250	1842.54	-778.52
4	GUIDE	used	894312440	8.35	14681	-0.121	0.245	0.136	0.222	256.267206	-29.720309	1627.00	-1854.38
5	GUIDE	used	894179704	8.73	14681	-0.190	-0.697	0.127	0.204	254.813840	-29.808957	-255.51	2290.34
6	GUIDE	used	964701696	8.89	14678	0.094	-0.433	0.142	0.237	254.649267	-30.120754	-1487.88	2371.84
7	GUIDE	used	964704056	8.10	14687	0.436	0.738	0.108	0.184	255.534594	-30.651859	-2307.60	-873.57

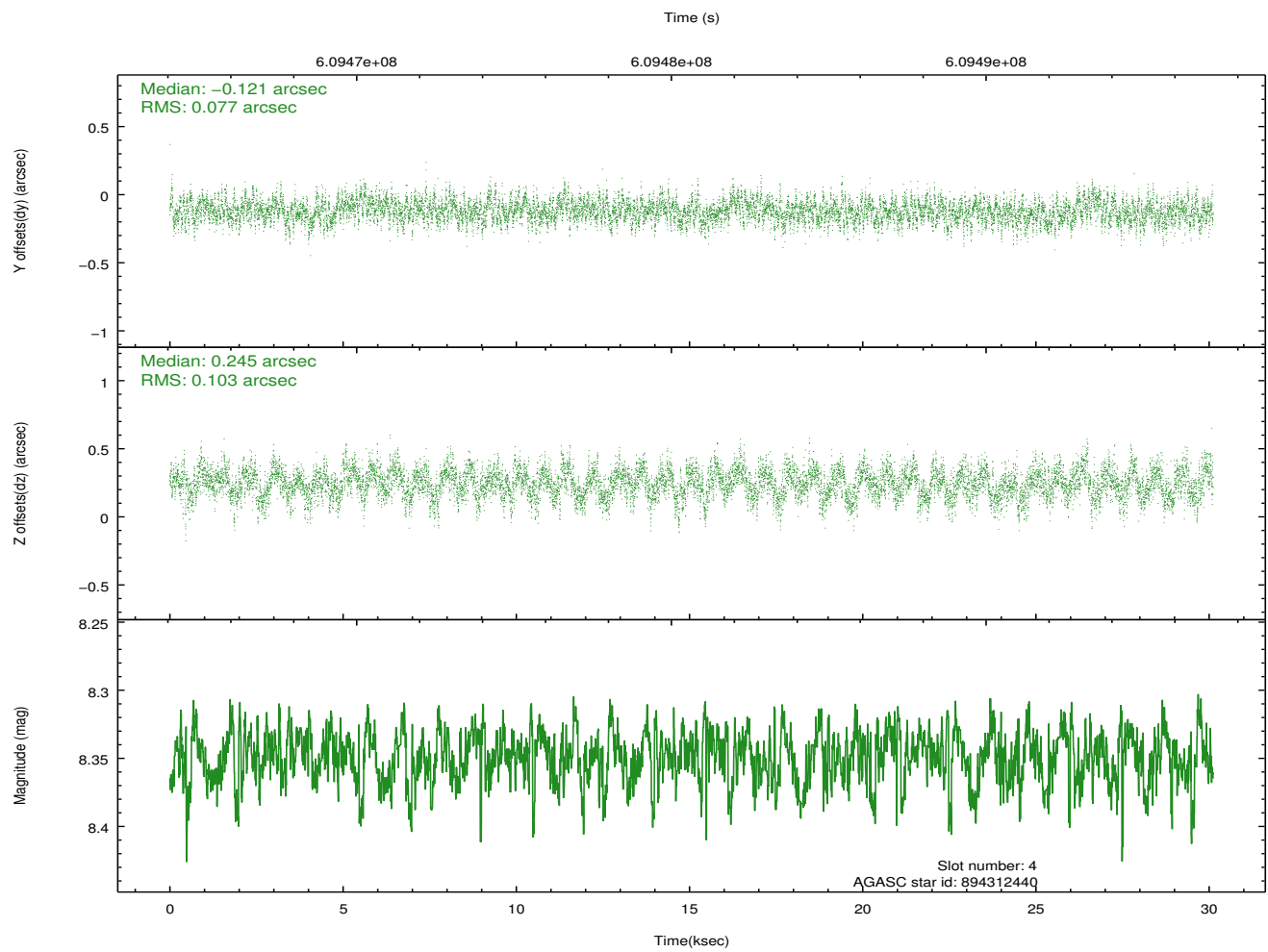
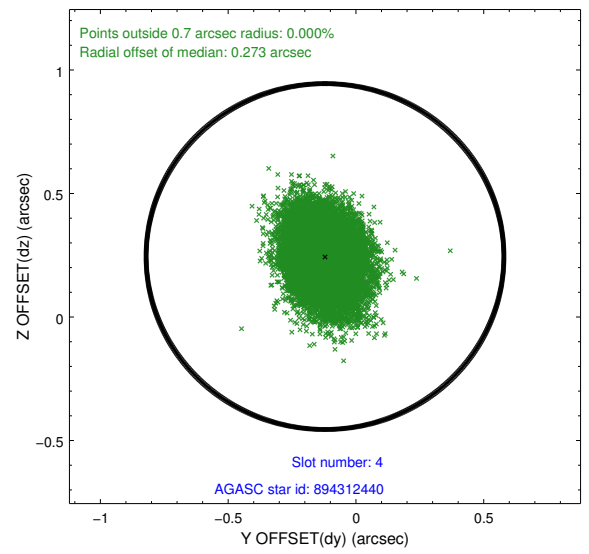
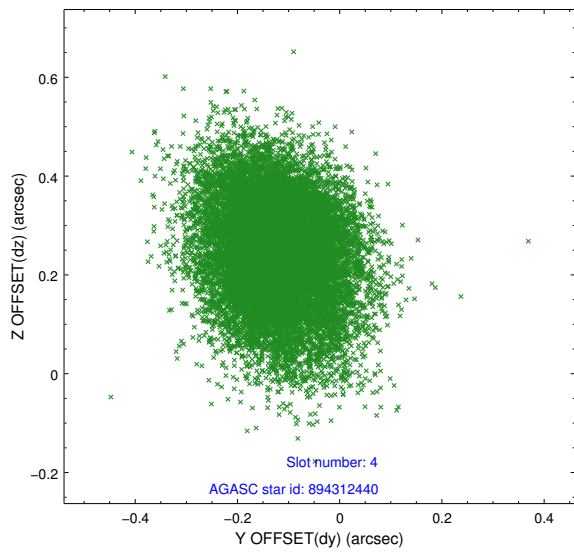
∞

2.4 Star Slots

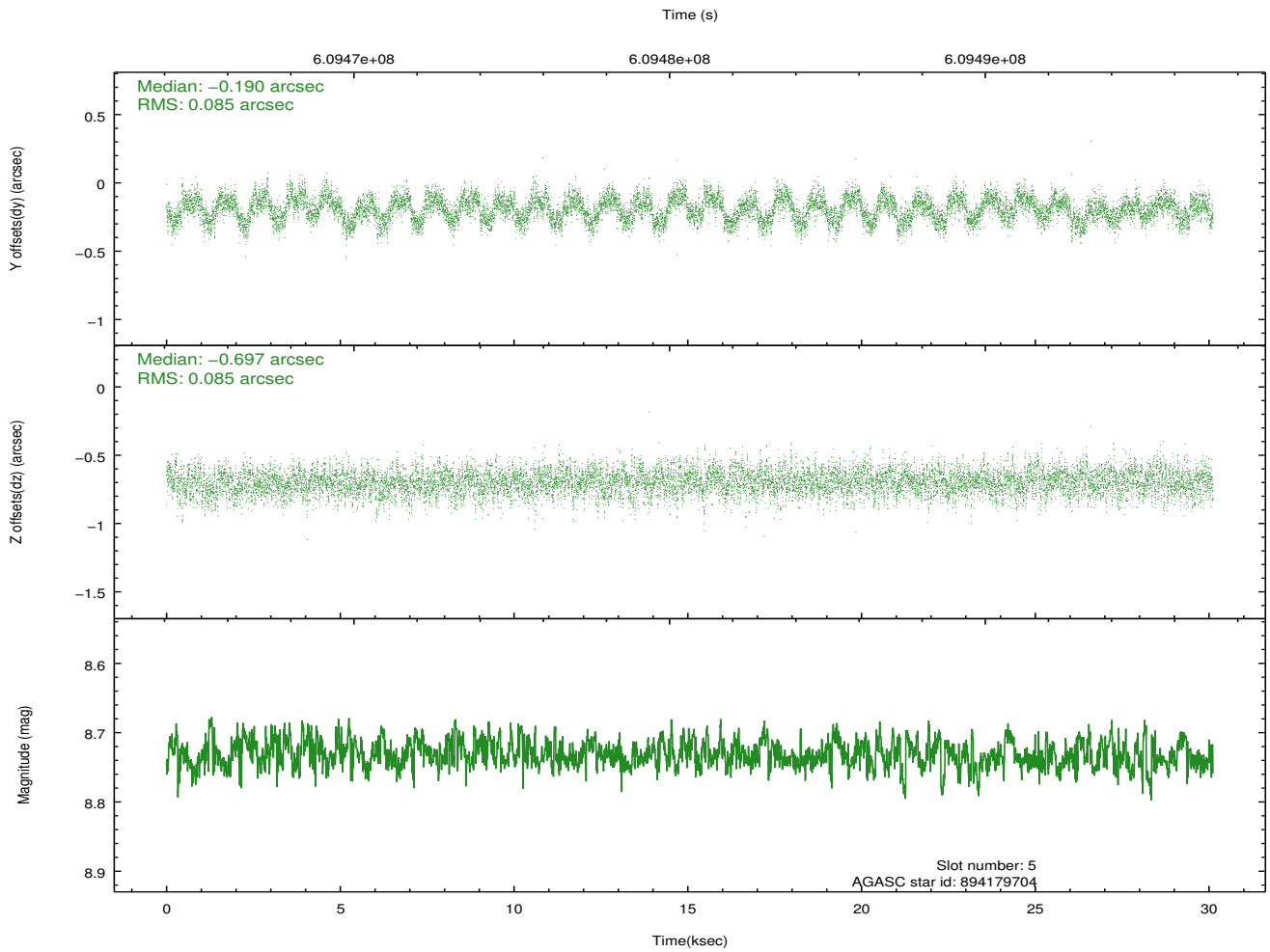
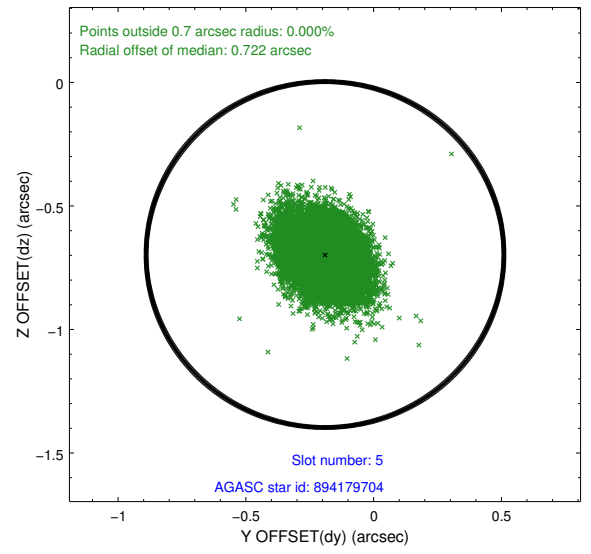
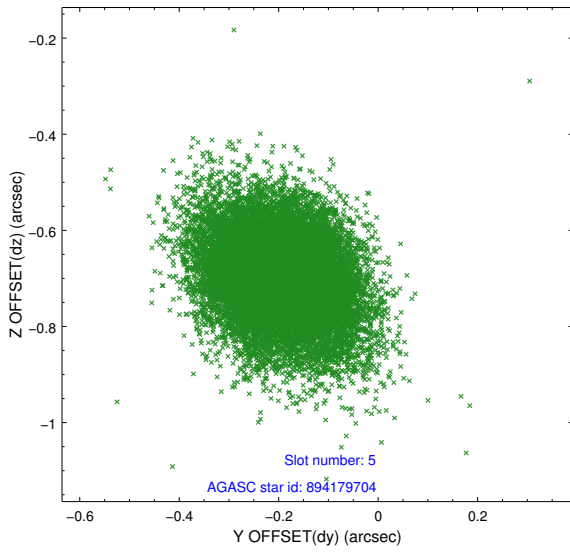
2.4.1 Slot 3



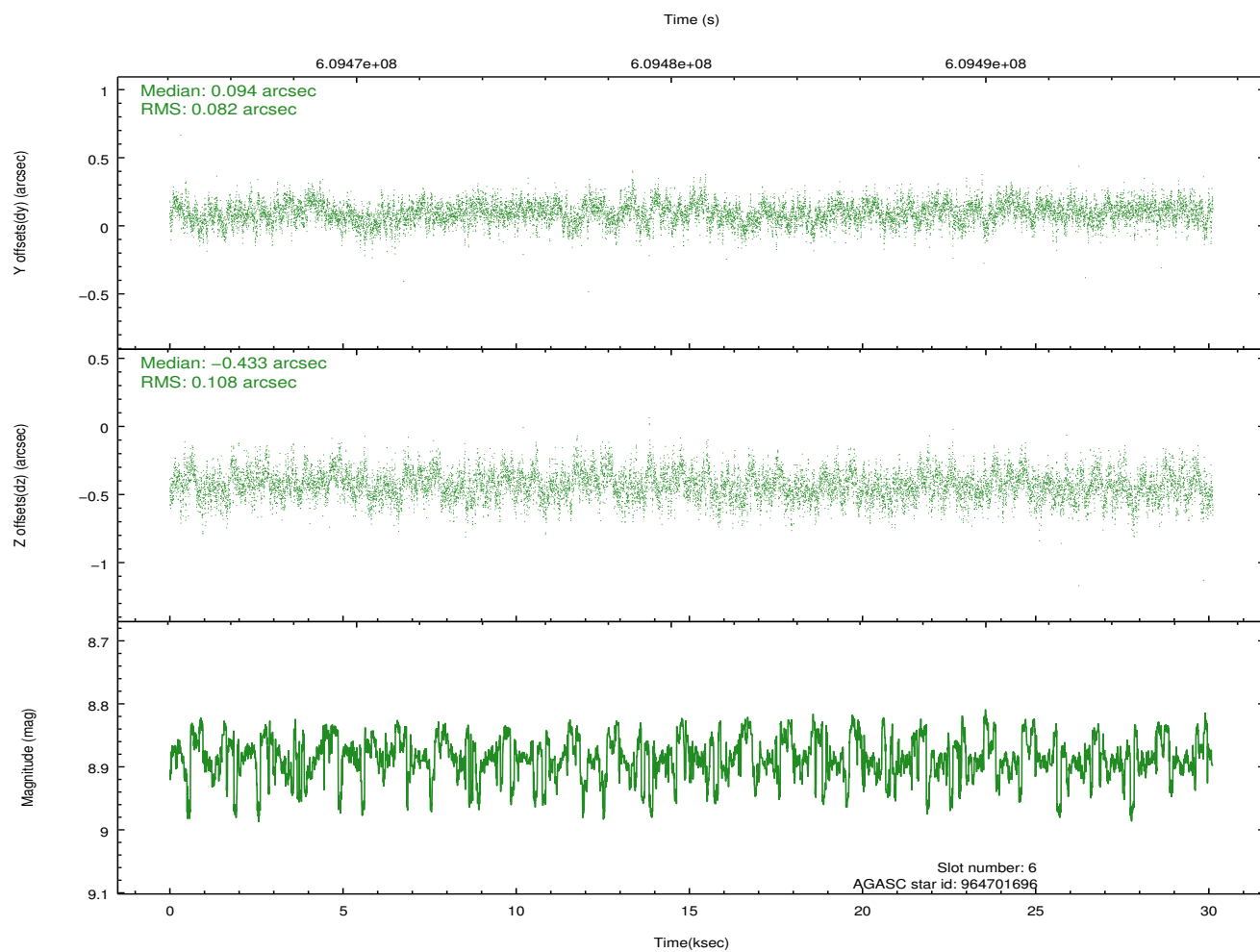
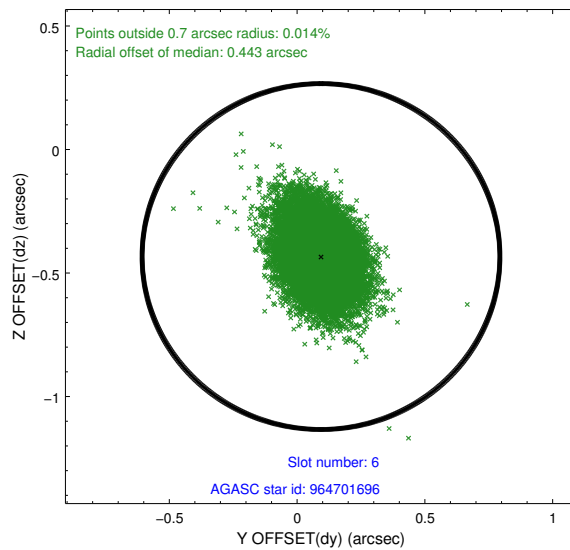
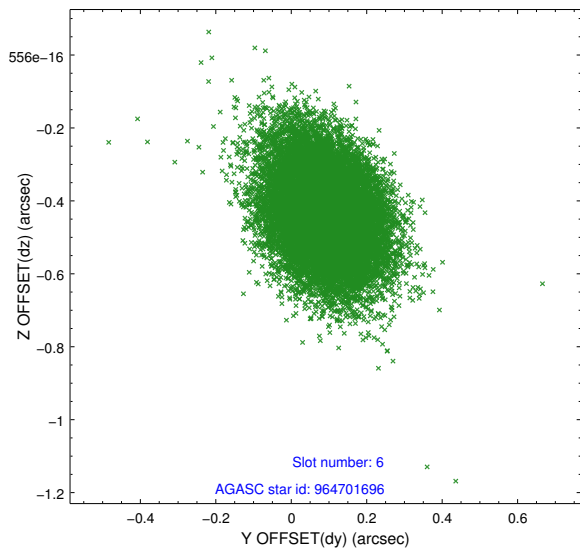
2.4.2 Slot 4



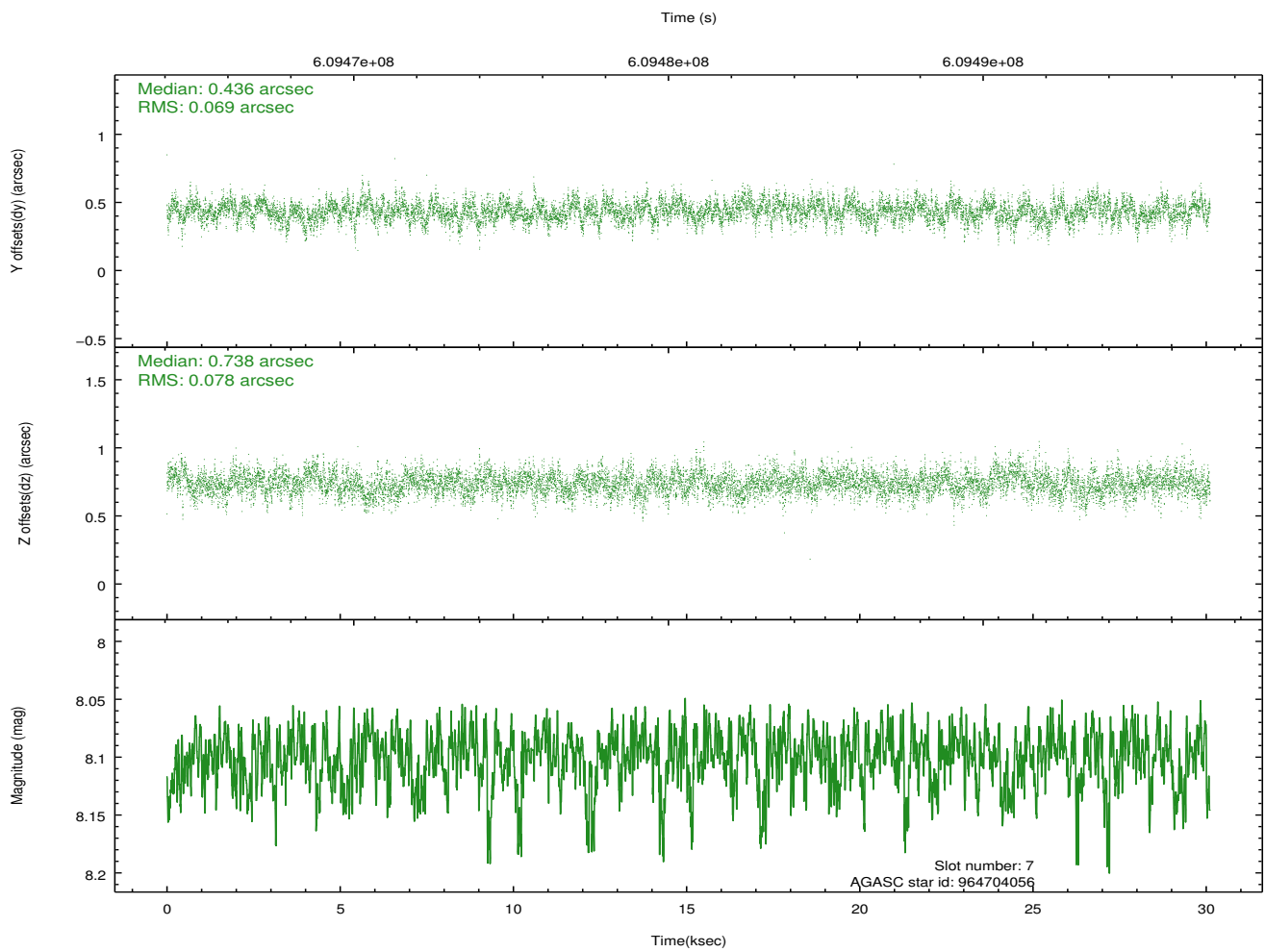
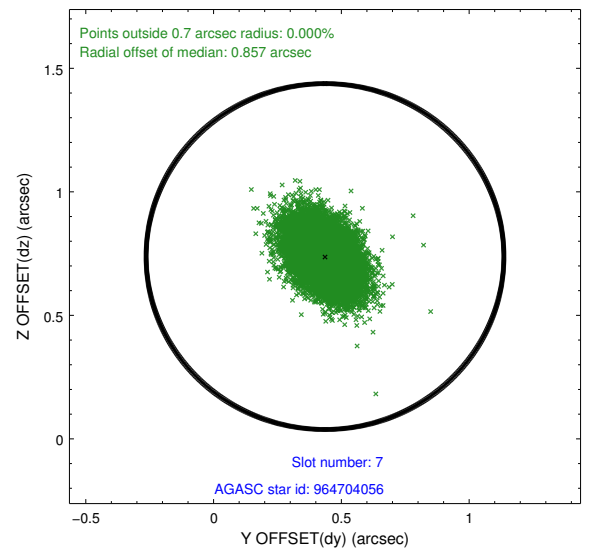
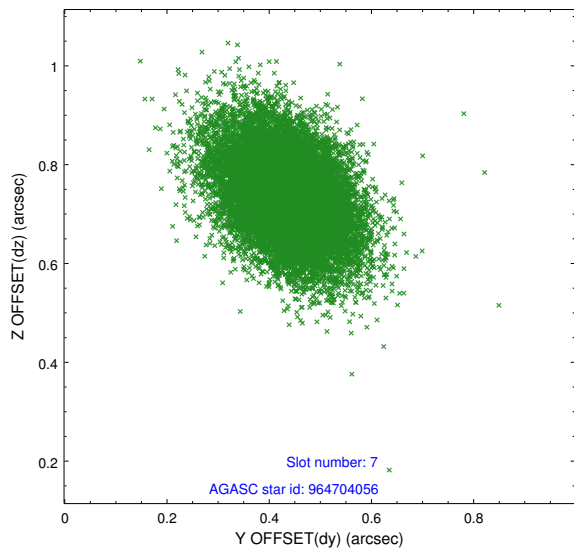
2.4.3 Slot 5



2.4.4 Slot 6

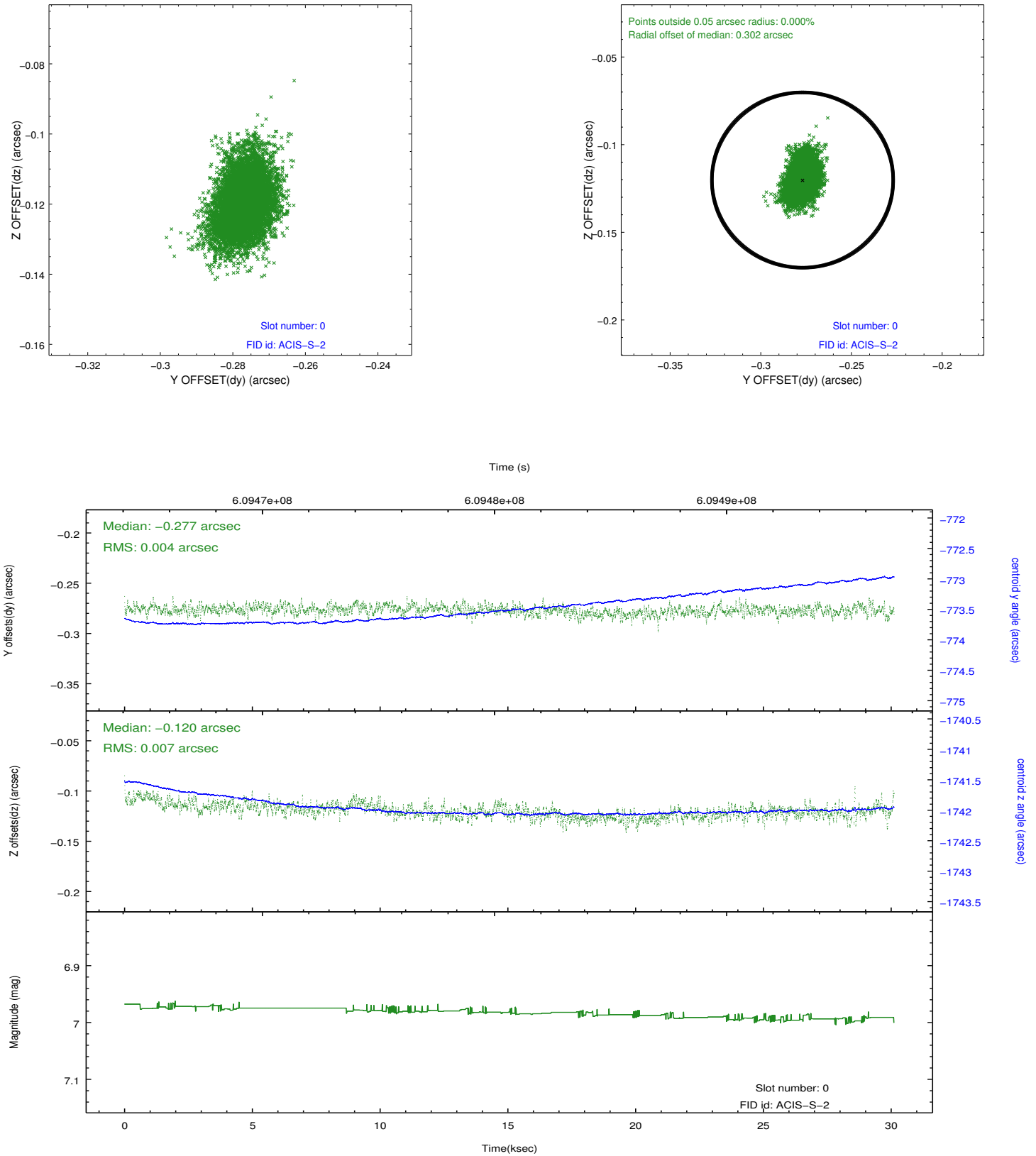


2.4.5 Slot 7

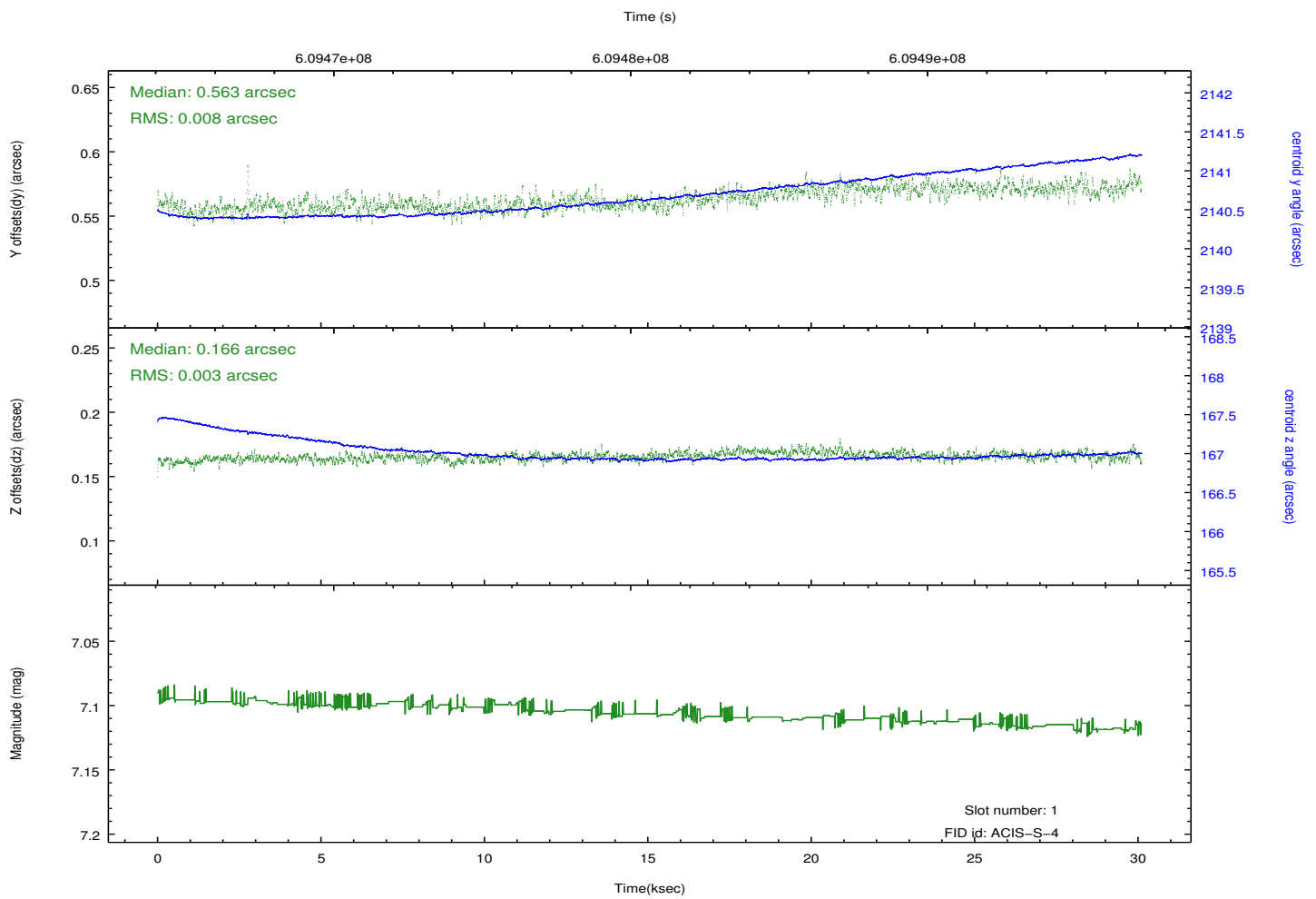
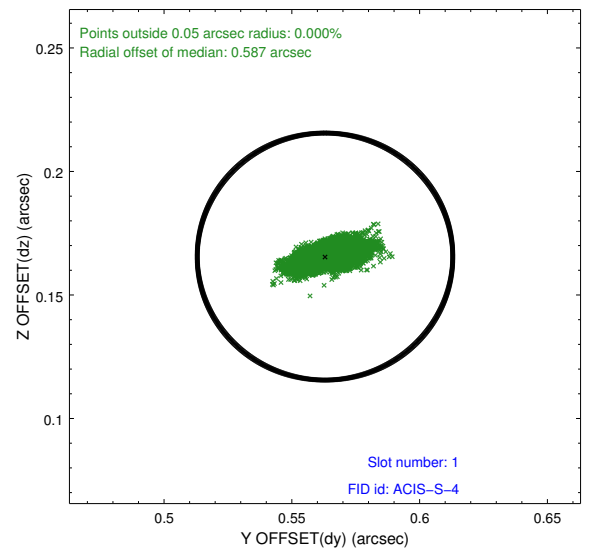
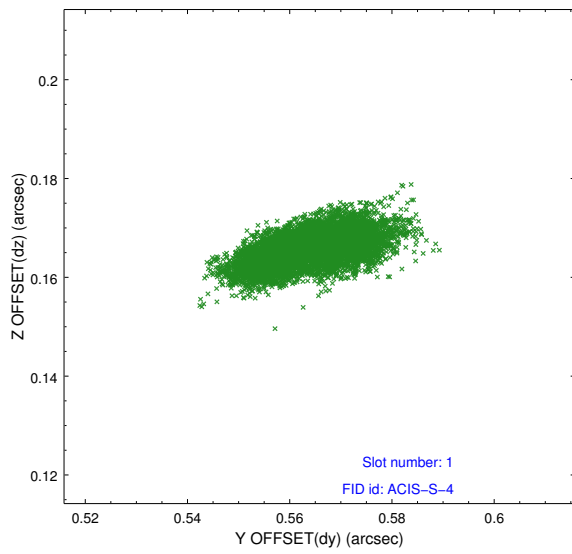


2.5 FID Slots

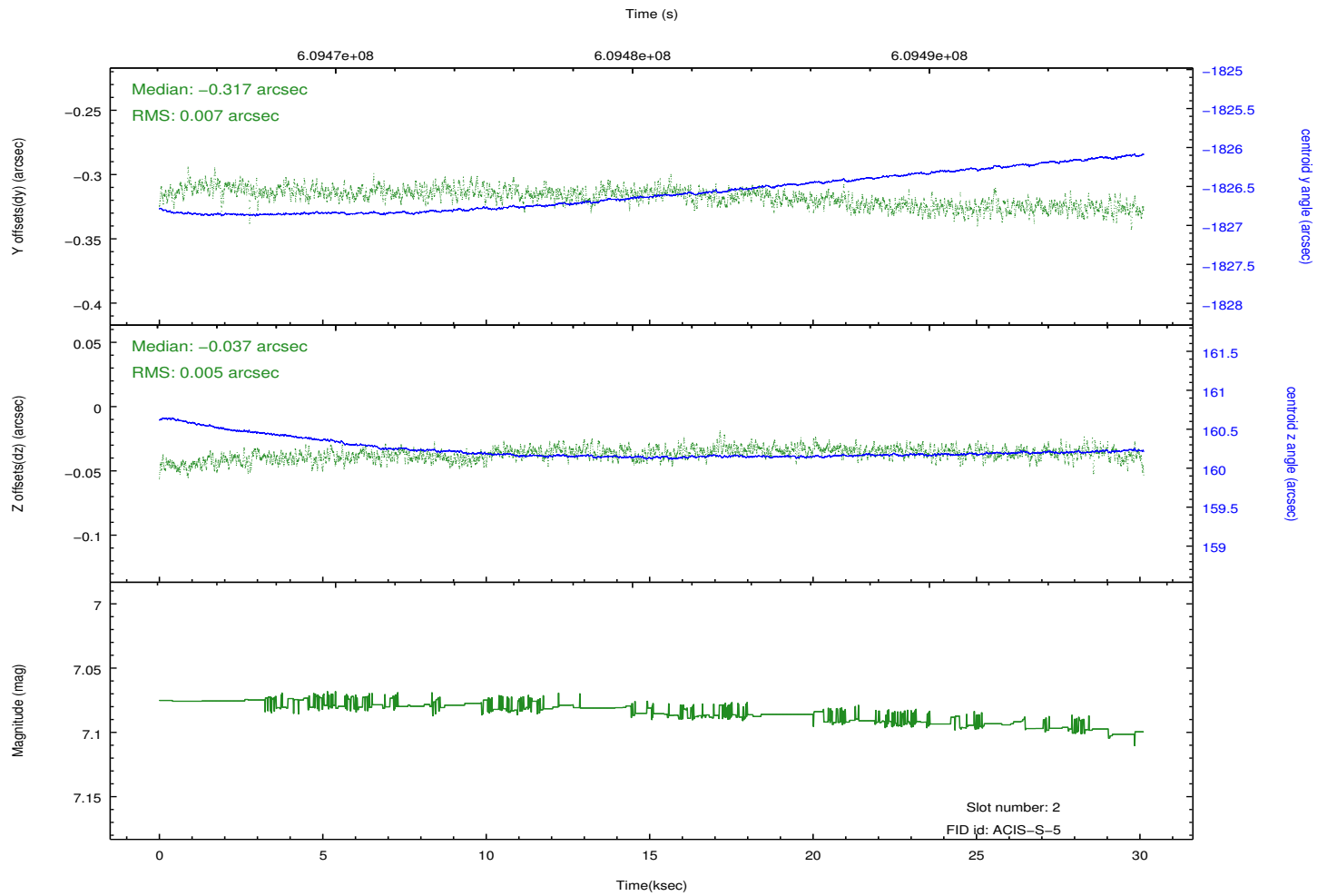
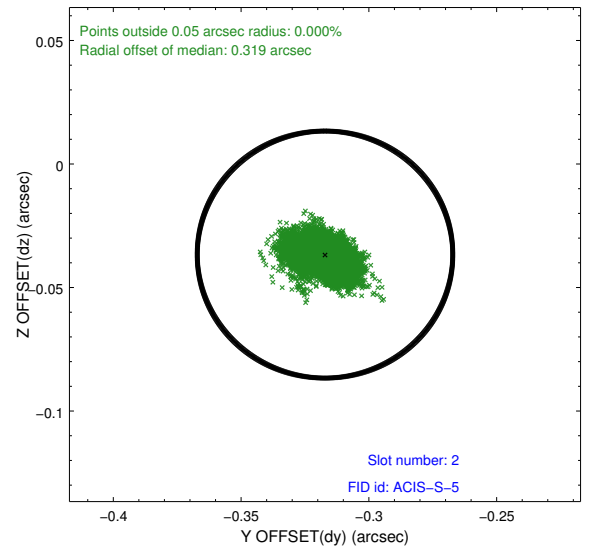
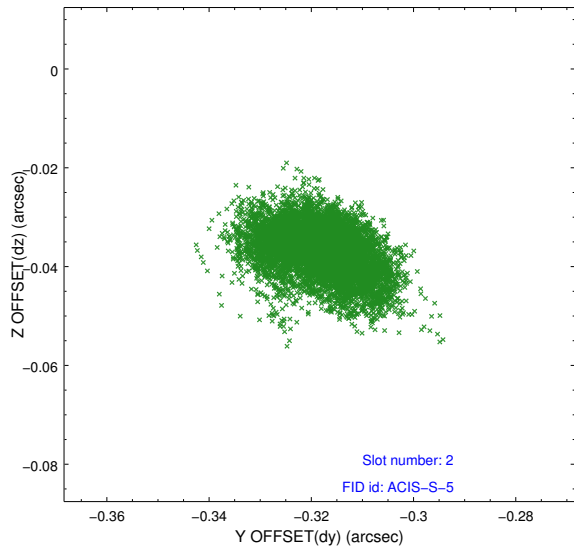
2.5.1 Slot 0



2.5.2 Slot 1



2.5.3 Slot 2



A Summary

A.1 Status

V&V Scientist	Jen Lauer
V&V Date (YYYY-MM-DD)	2017.04.26
V&V Edition	1
V&V Disposition and Status	OK
V&V Charge Time	30.069516575217

A.2 Comments

Window constraint met.