

V&V Reference Report

L2 ASCDS Version : 10.6

Observation 19772 - L2 Version 1
Chandra X-Ray Center

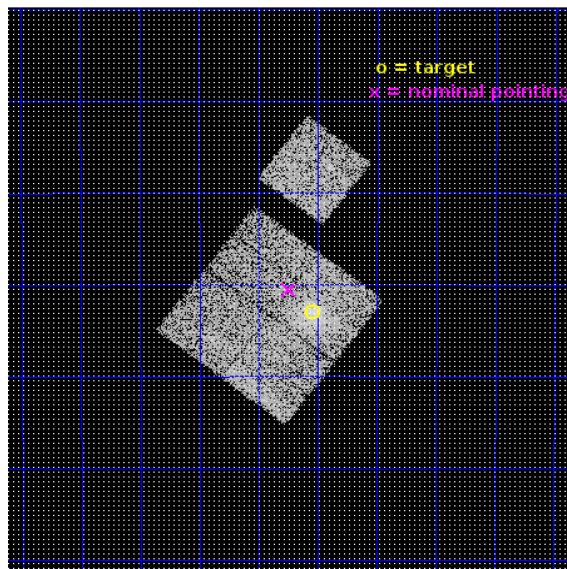
L2 Processing Date : Sep 30 2017

Contents

1	Front	2
2	OBI	3
2.1	OBI	3
2.1.1	Images	3
2.1.2	Bias	3
2.1.3	Parameters	4
2.1.4	Events	4
2.2	Compared Parameters	5
2.3	Aspect	6
2.4	Star Slots	9
2.4.1	Slot 3	9
2.4.2	Slot 4	10
2.4.3	Slot 5	11
2.4.4	Slot 6	12
2.4.5	Slot 7	13
2.5	FID Slots	14
2.5.1	Slot 0	14
2.5.2	Slot 1	15
2.5.3	Slot 2	16
A	Summary	17
A.1	Status	17
A.2	Comments	17

1 Front

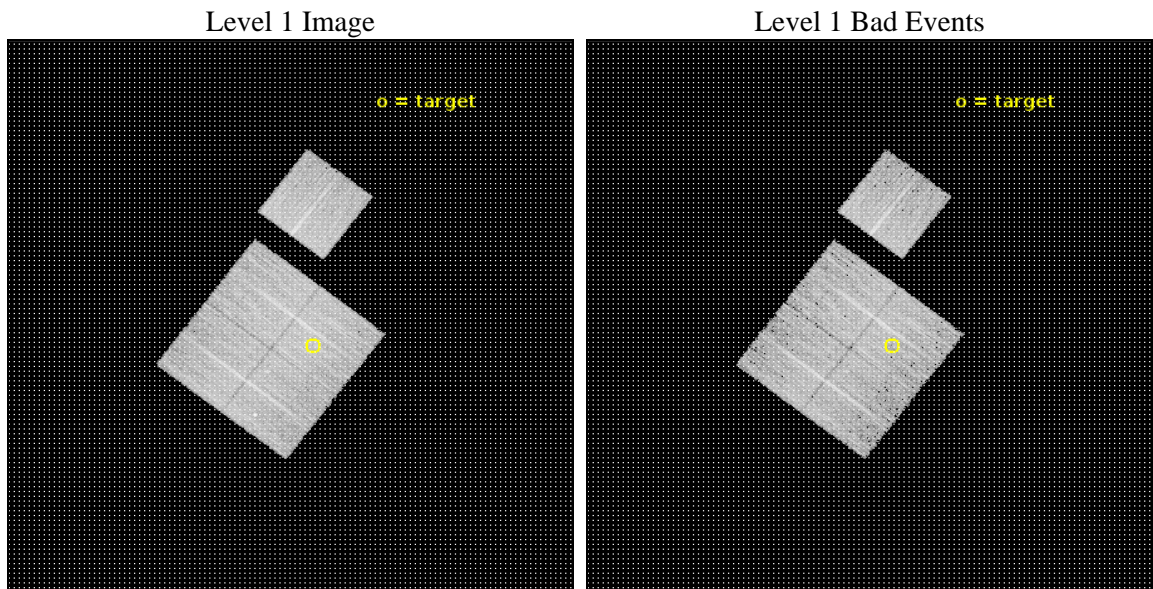
seq_num	801709	Sequence number
obs_id	19772	Observation id
title	Probing the Planck Cluster Sample	Proposal title
observer	Ralph Kraft	Principal investigator
object	G243.14	Source name
dtcycle	0	
cycle	P	events from which exps? Prim/Second/Both
ra_targ	29.76	Observer's specified target RA [deg]
dec_targ	-34.217389	Observer's specified target Dec [deg]
ra_nom	29.809882168126	Nominal RA [deg]
dec_nom	-34.176027207054	Nominal Dec [deg]
roll_nom	37.236772273074	Nominal Roll [deg]
revision	1	Processing version of data
ontime	10071.900077581	Sum of GTIs [s]
livetime	9940.3032882428	Livetime [s]
ontime0	10068.759017348	Sum of GTIs [s]
ontime1	10071.900077581	Sum of GTIs [s]
ontime2	10071.900077581	Sum of GTIs [s]
ontime3	10071.900077581	Sum of GTIs [s]
ontime6	10068.759017348	Sum of GTIs [s]
l2events	33194	Number of level 2 events



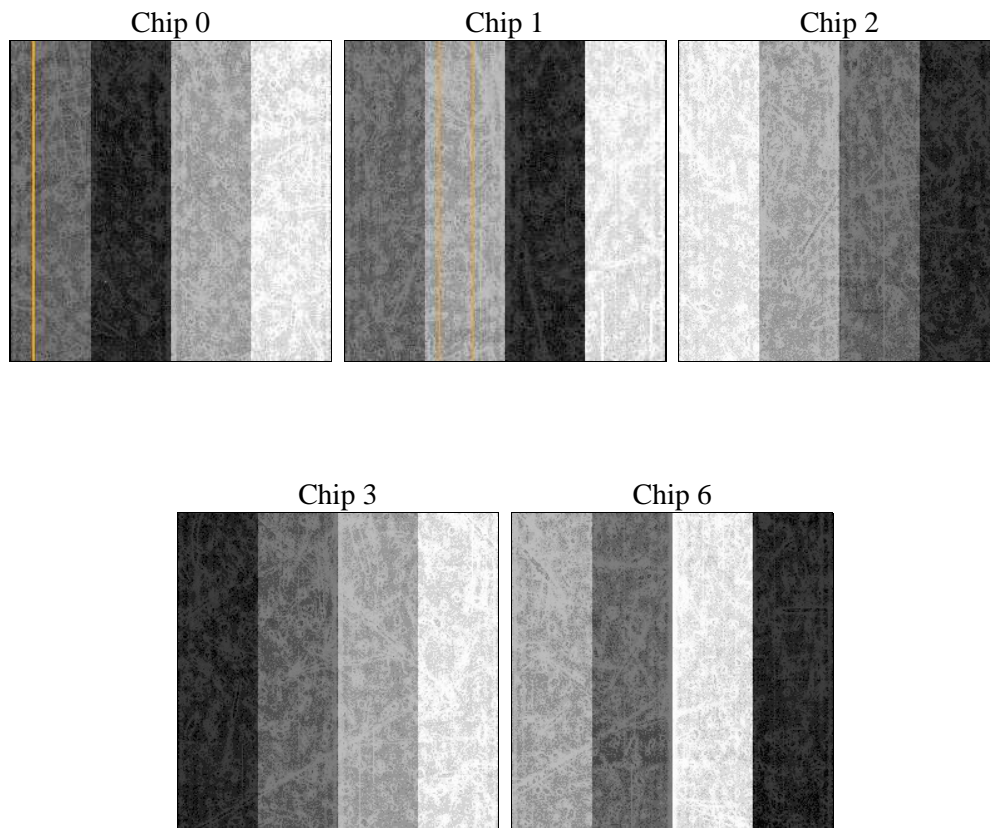
2 OBI

2.1 OBI

2.1.1 Images



2.1.2 Bias



2.1.3 Parameters

obi_num	0	Obi number	sched_exp_time	10000.000000	[s] Scheduled observation exposure time
ascdsver	10.6	Processing system revision	ontime	10071.900077581	Sum of GTIs [s]
caldbver	4.7.6	 	ontime0	10068.759017348	Sum of GTIs [s]
date	2017-09-30T13:12:14	Date and time of file creation	ontime1	10071.900077581	Sum of GTIs [s]
revision	1	Processing version of data	ontime2	10071.900077581	Sum of GTIs [s]
			ontime3	10071.900077581	Sum of GTIs [s]
			ontime6	10068.759017348	Sum of GTIs [s]
			l1events	307781	Number of level 1 events

2.1.4 Events

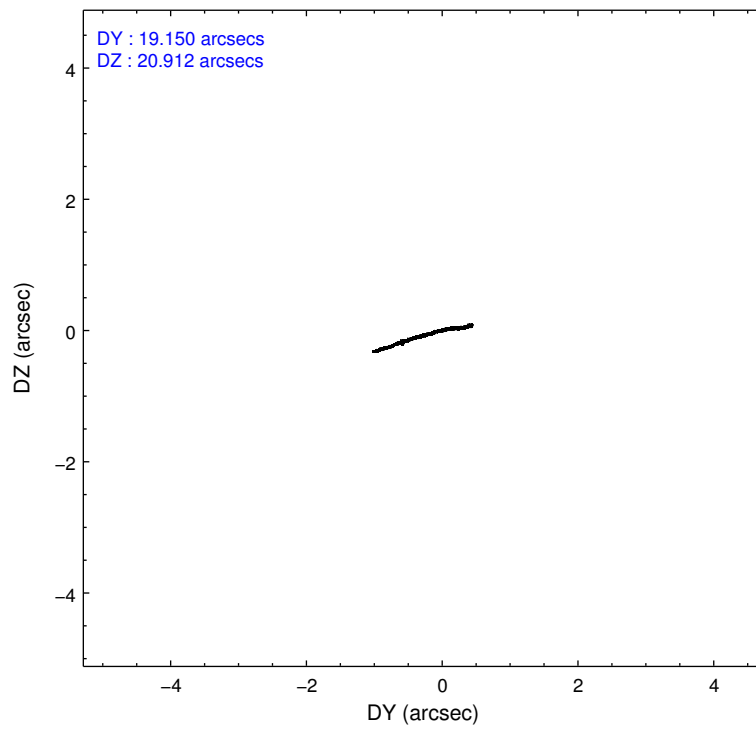
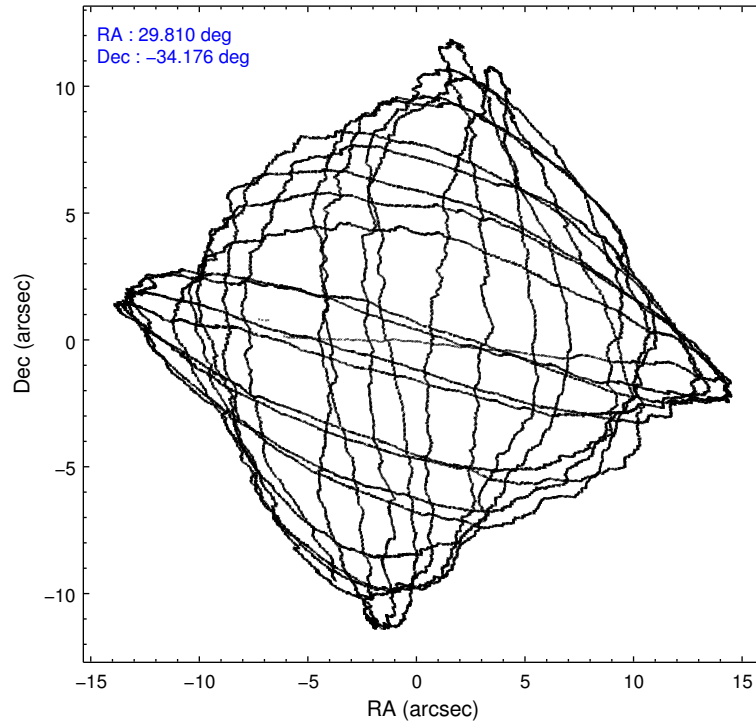
	ccd 0	ccd 1	ccd 2	ccd 3	ccd 6
level 1 events	58692	57661	63937	64862	62629
rejected events	51532	48973	56934	55873	55091
rejected %	87%	84%	89%	86%	87%

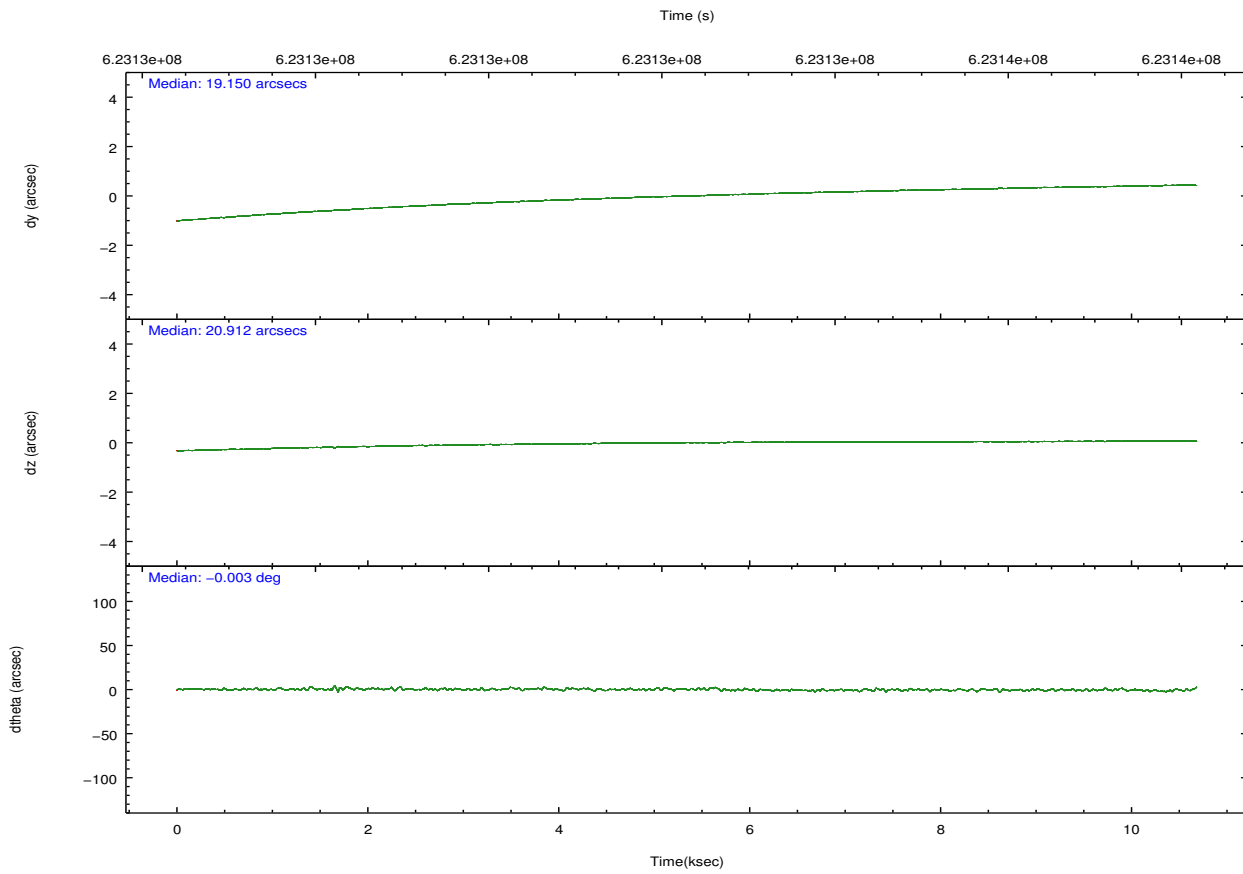
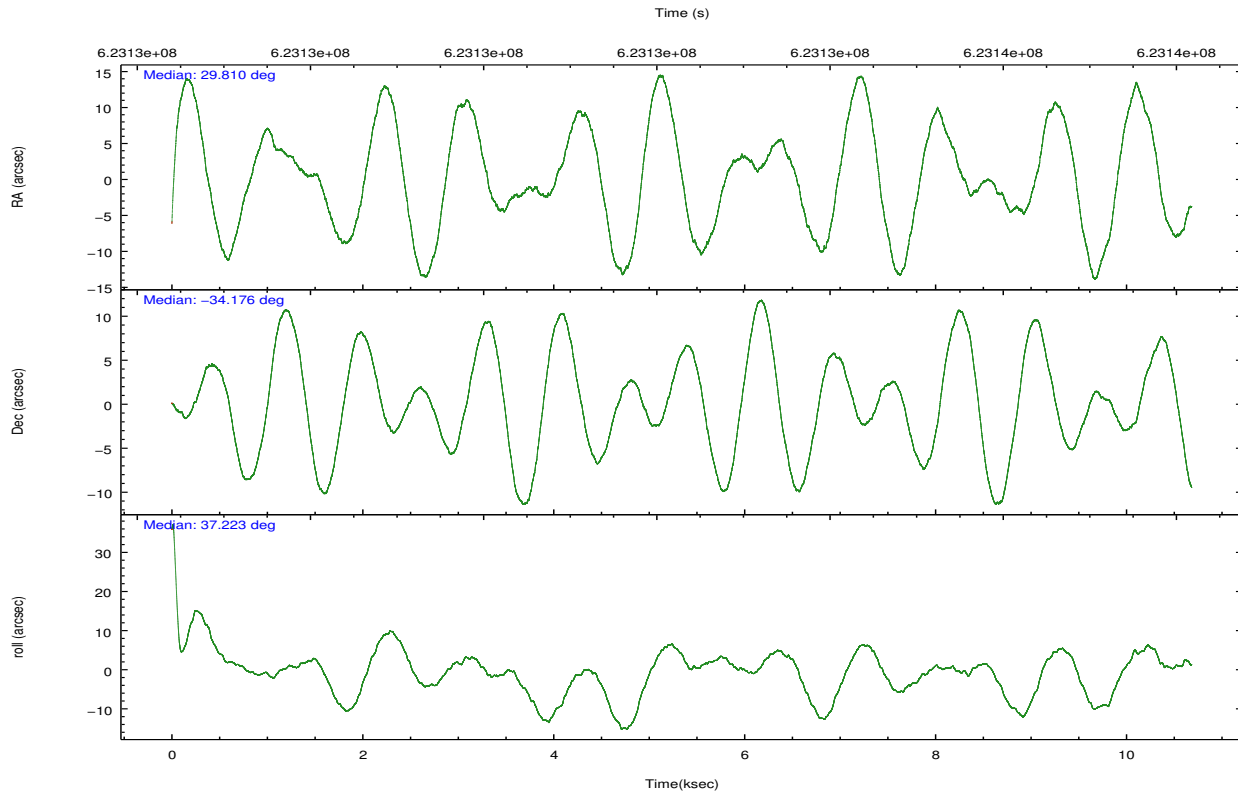
	ccd 0	ccd 1	ccd 2	ccd 3	ccd 6
grade 0 events	2413	3233	2475	4034	2536
	4%	5%	3%	6%	4%
grade 1 events	40	131	42	46	18
	0%	0%	0%	0%	0%
grade 2 events	1767	2122	1737	1761	1672
	3%	3%	2%	2%	2%
grade 3 events	759	787	677	792	727
	1%	1%	1%	1%	1%
grade 4 events	665	774	711	789	748
	1%	1%	1%	1%	1%
grade 5 events	2905	2977	2699	3144	3144
	4%	5%	4%	4%	5%
grade 6 events	1559	1775	1407	1617	1858
	2%	3%	2%	2%	2%
grade 7 events	48584	45862	54189	52679	51926
	82%	79%	84%	81%	82%

2.2 Compared Parameters

Parameter	Planned	Actual	Parameter	Planned	Actual
Instrument	ACIS	ACIS	Obspar format version number	7	7
Detector	ACIS-01236	ACIS-01236	Obspar file type	PREDICTED	ACTUAL
Grating	NONE	NONE	Obspar update status	NONE	UPDATED
Data mode	VFAINT	VFAINT	Number of optional ACIS chips dropped	0	0
Observation mode	POINTING	POINTING	On-chip summing requested	N	N
[deg] Pointing RA	29.797065	29.80988216812562	Subarray requested	NONE	NONE
[deg] Pointing Dec	-34.201545	-34.17602720705384	Alternating exposures requested	N	N
[deg] Pointing Roll	37.020826	37.23677227307418	[s] Primary exposure time	0.000000	3.1
[mm] SIM focus pos	-0.782348	-0.7809083437167272			
[mm] SIM defocus	0	0.001439871863259334			
[mm] SIM translation stage pos	-225.842463	-225.8433433320239			
[mm] SIM translation stage offset	-7.75	-7.749109670905796			
[s] Observation start time (MET)	623127626.184000	623126272.93116			
Observation start date	2017-09-30T02:59:17	2017-09-30T02:37:52			
[s] Observation end time (MET)	623137626.184000	623138707.20689			
Observation end date	2017-09-30T05:45:57	2017-09-30T06:05:07			
Read mode	TIMED	TIMED			

2.3 Aspect





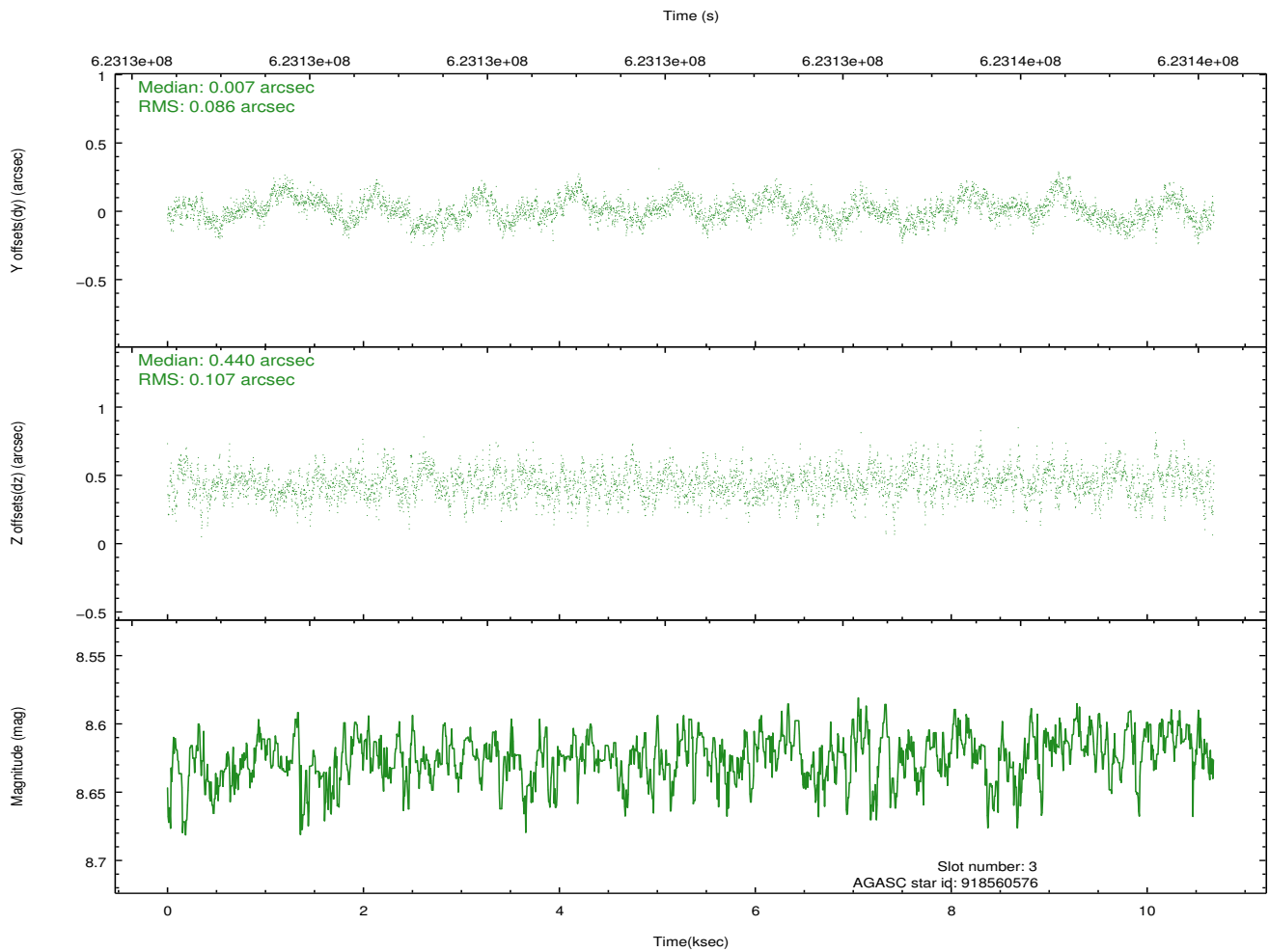
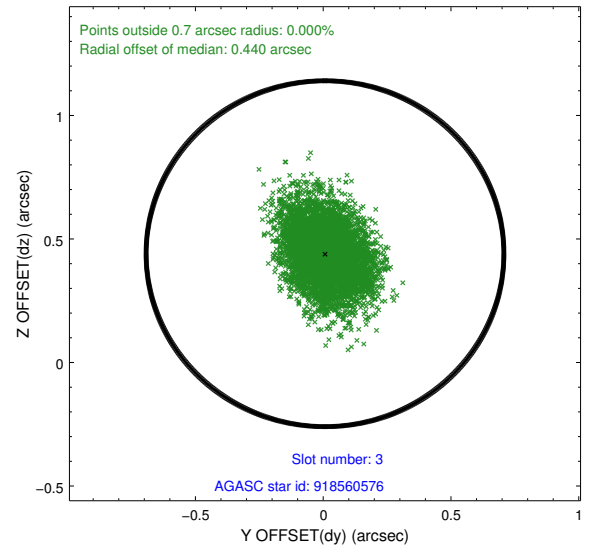
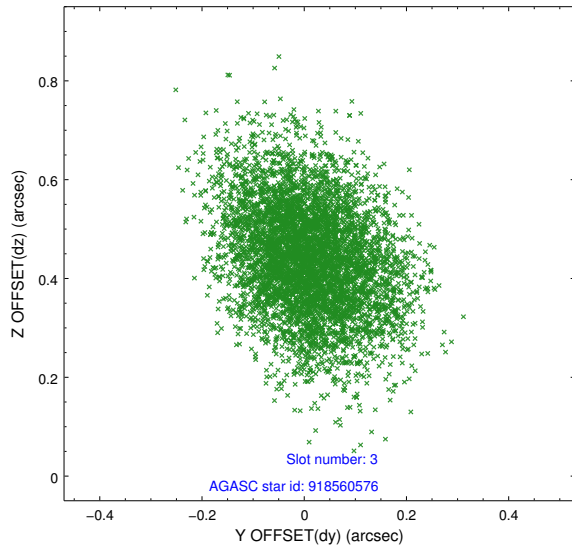
Slot Statistics

slot	status	used	id	mag	n_pts	med_dy	med_dz	dr1	dr2	ra	dec	mean_y	mean_z
0	FID		ACIS-I-1	7.14	2606	0.126	-0.134	0.014	0.021	0.000000	0.000000	920.29	-1003.82
1	FID		ACIS-I-2	7.10	2605	-0.468	-0.097	0.012	0.019	0.000000	0.000000	-774.54	-1009.53
2	FID		ACIS-I-4	7.06	2606	0.244	0.298	0.008	0.013	0.000000	0.000000	2139.59	897.10
3	GUIDE	used	918560576	8.62	5209	0.007	0.440	0.146	0.239	29.920396	-34.759217	-917.03	-1822.62
4	GUIDE	used	918562696	8.21	5209	0.028	-0.283	0.123	0.218	29.494150	-34.106856	-516.74	813.87
5	GUIDE	used	918563072	9.23	5206	0.271	0.020	0.235	0.368	29.914104	-34.440152	-239.09	-894.68
6	GUIDE	used	918564712	8.95	5211	-0.212	0.016	0.154	0.263	30.196054	-34.420805	469.59	-1345.25
7	GUIDE	used	918566288	8.00	5211	-0.101	-0.190	0.152	0.252	29.263904	-33.939814	-706.83	1707.41

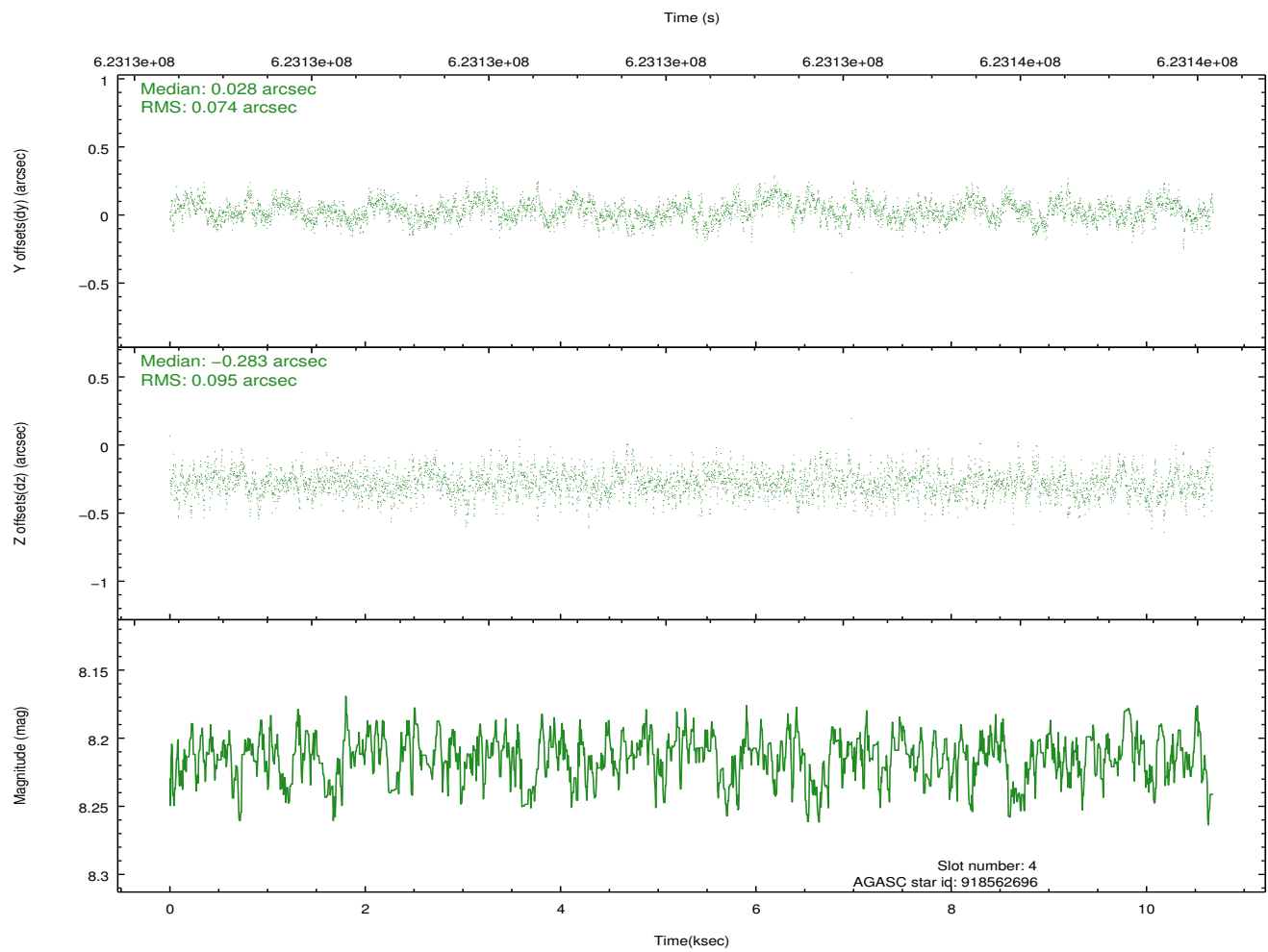
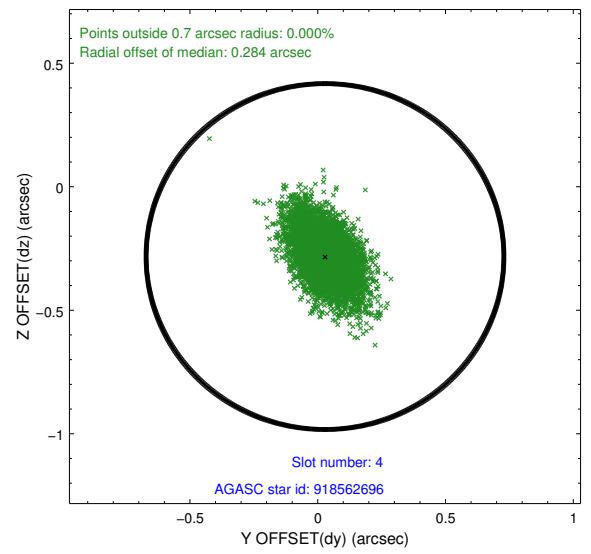
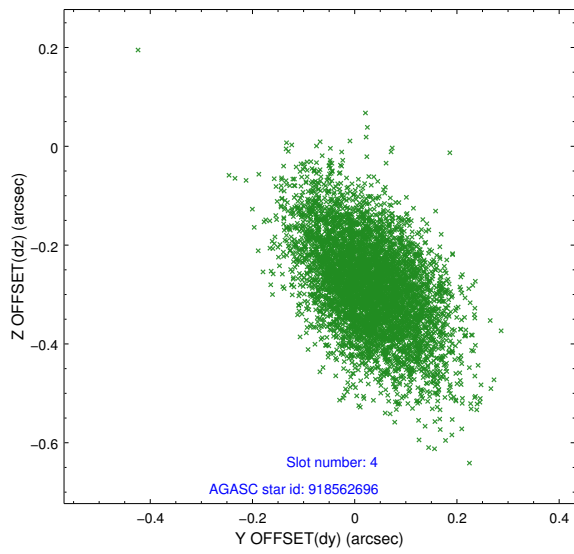
∞

2.4 Star Slots

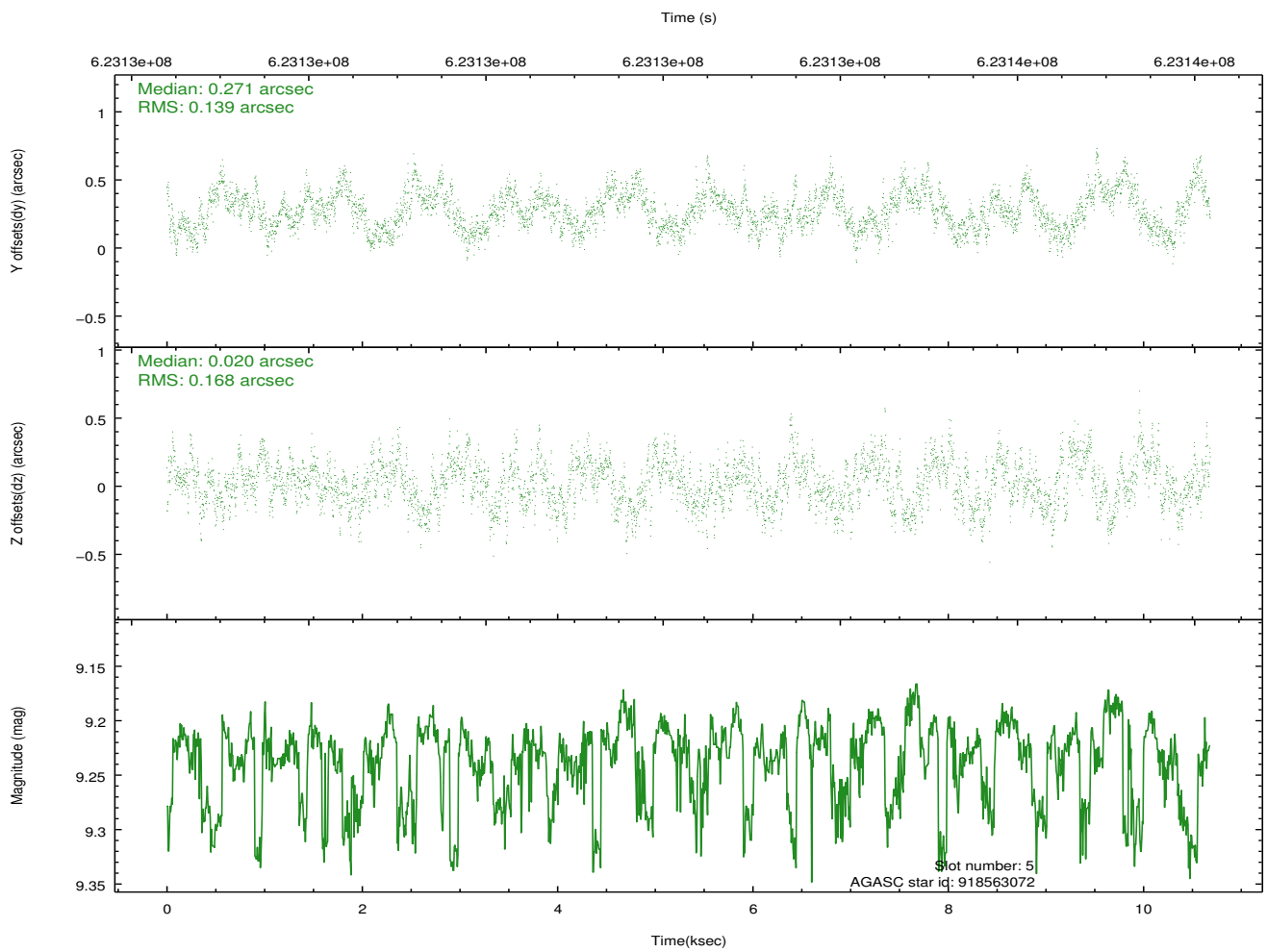
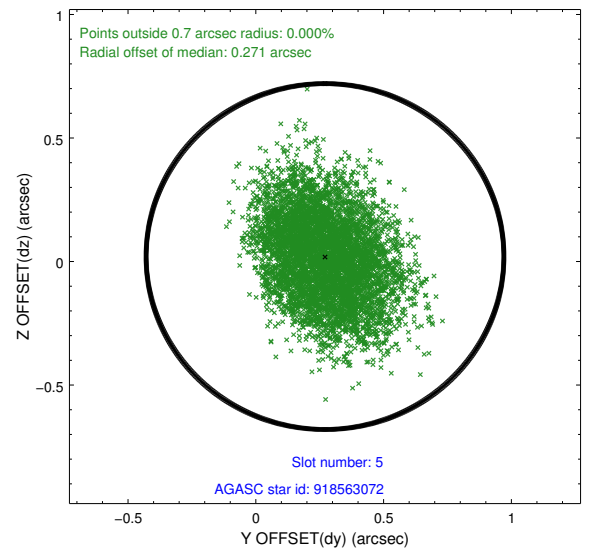
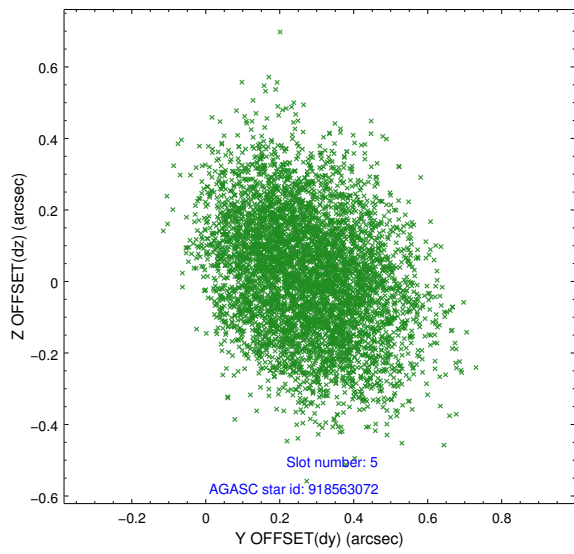
2.4.1 Slot 3



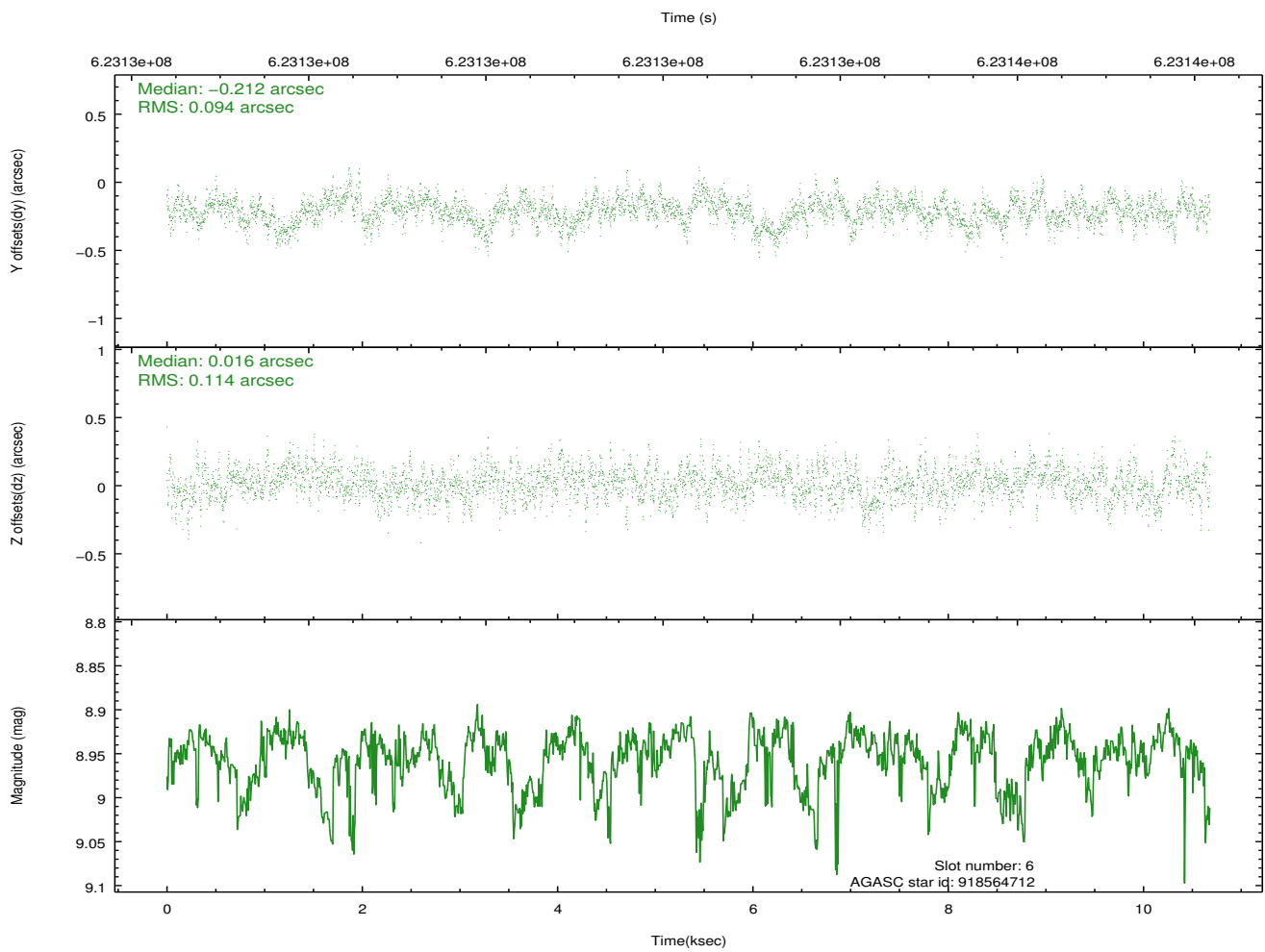
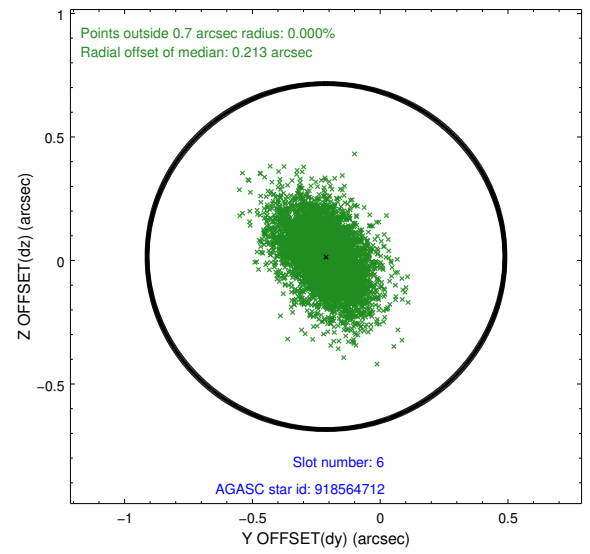
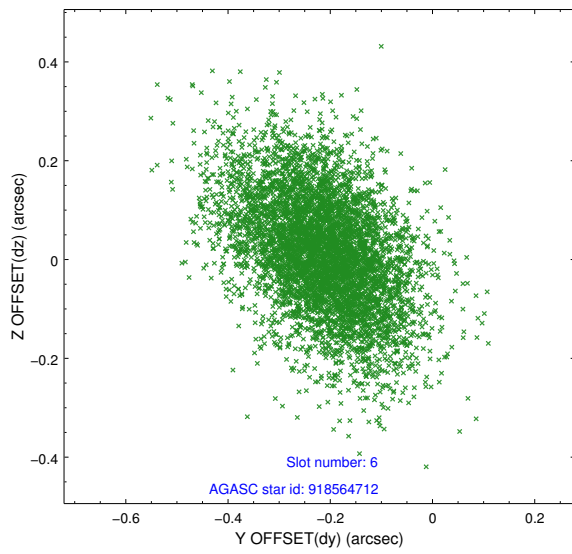
2.4.2 Slot 4



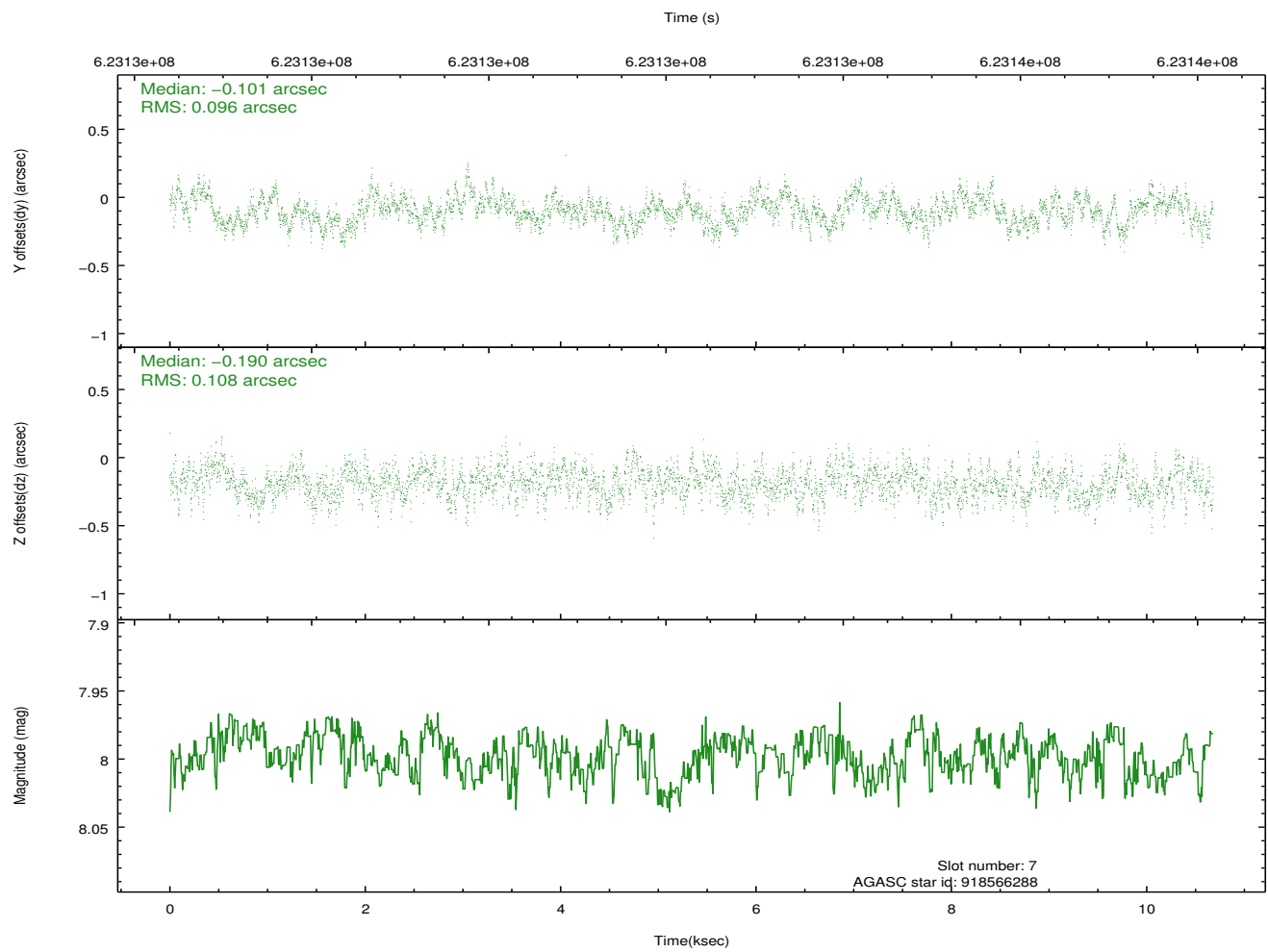
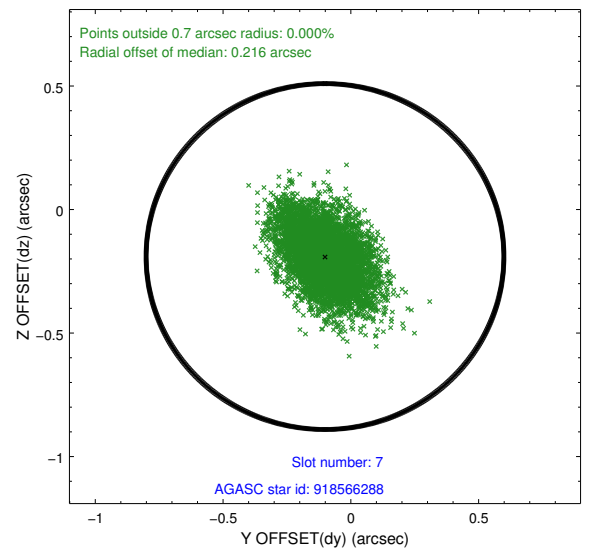
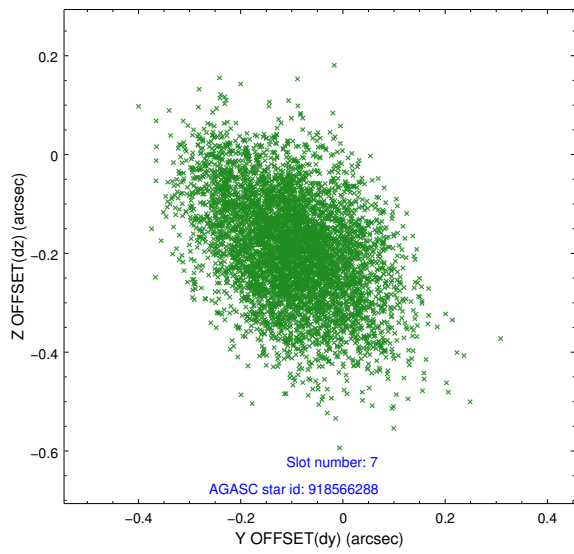
2.4.3 Slot 5



2.4.4 Slot 6

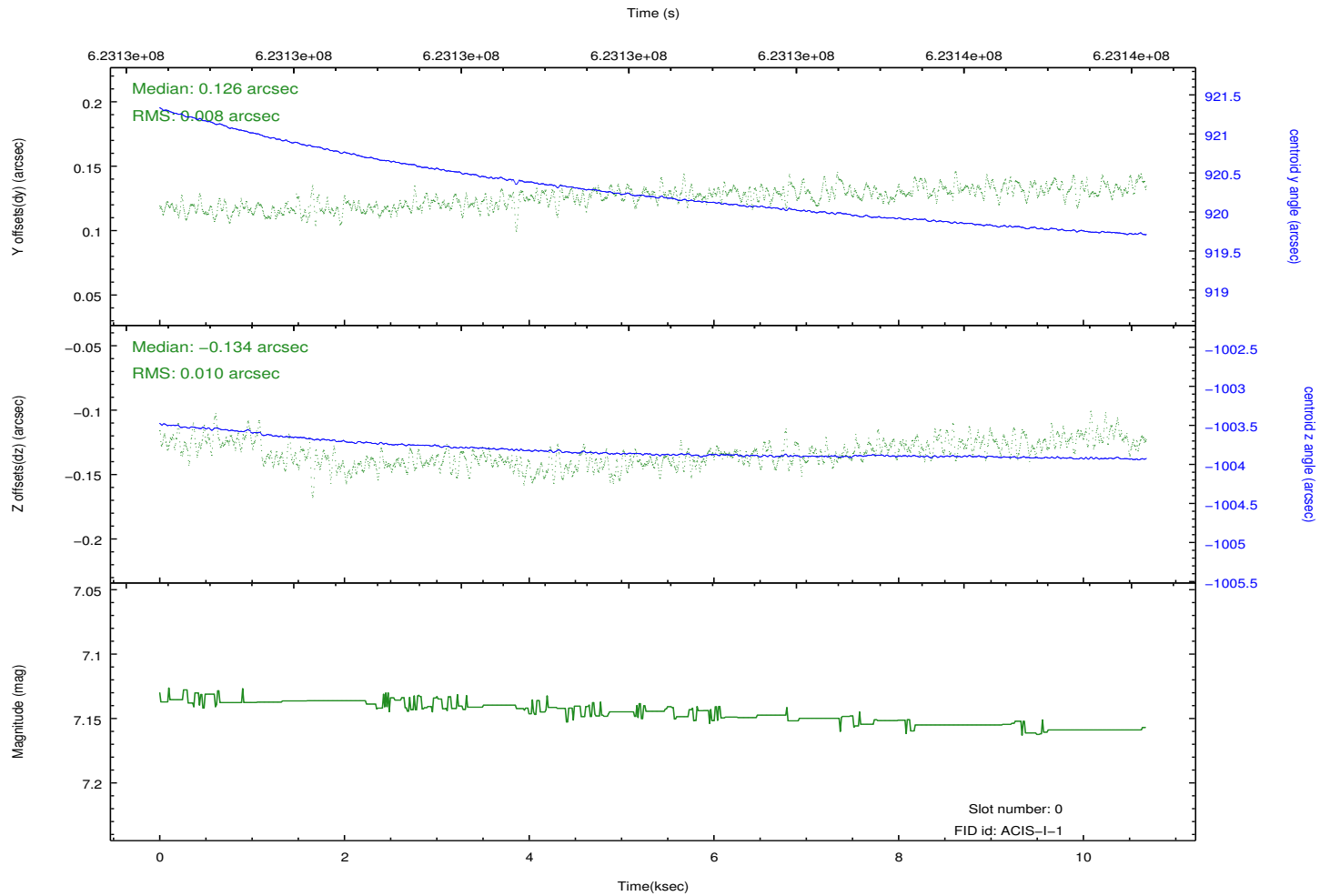
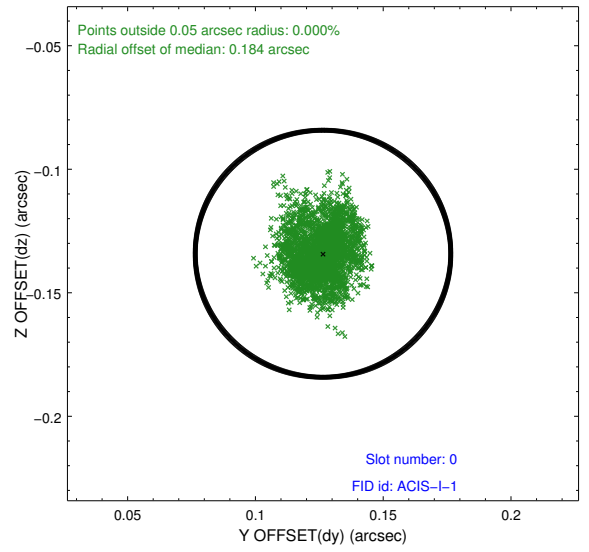
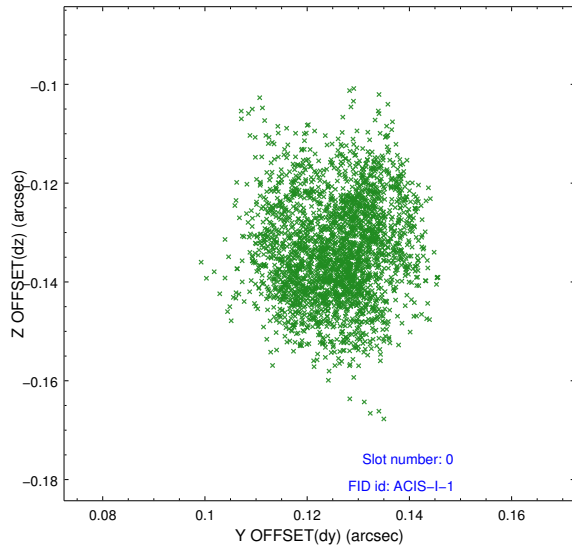


2.4.5 Slot 7

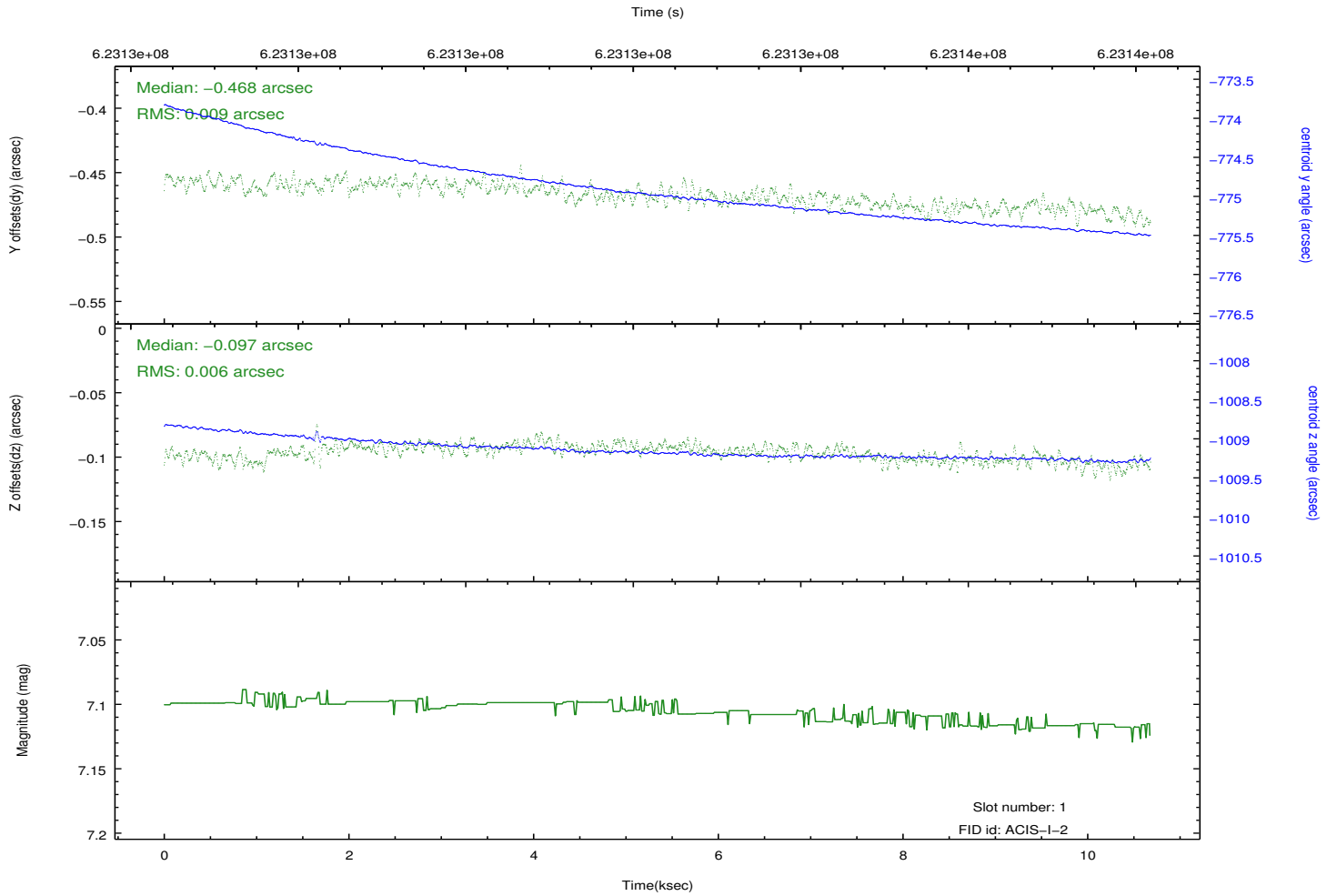
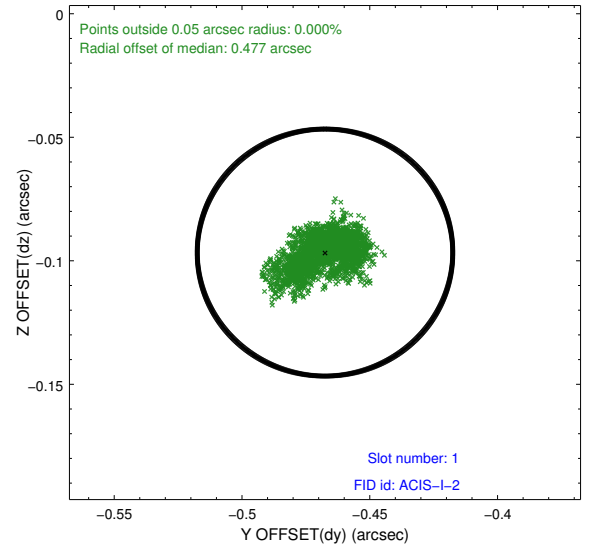
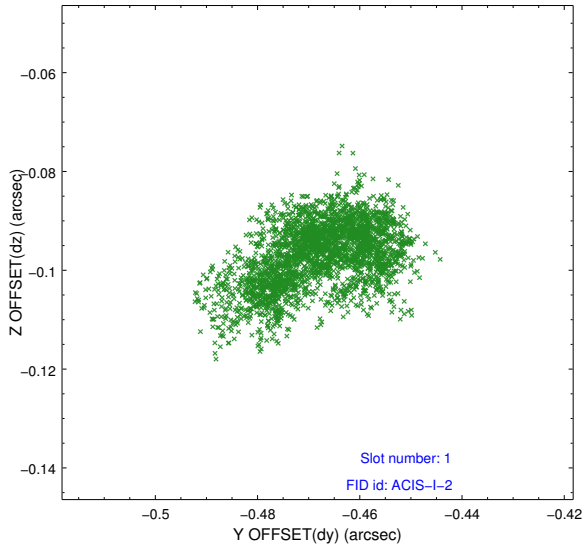


2.5 FID Slots

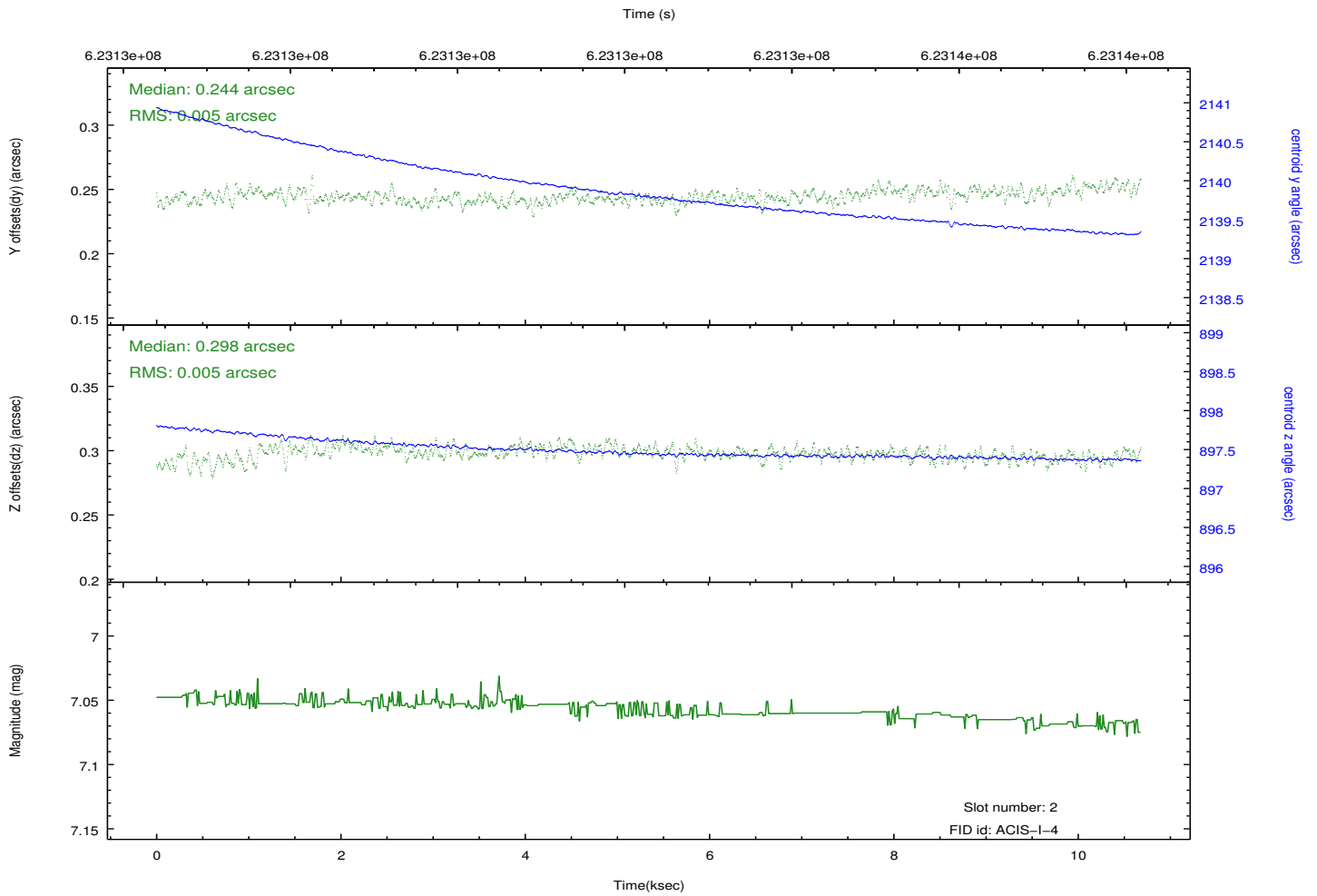
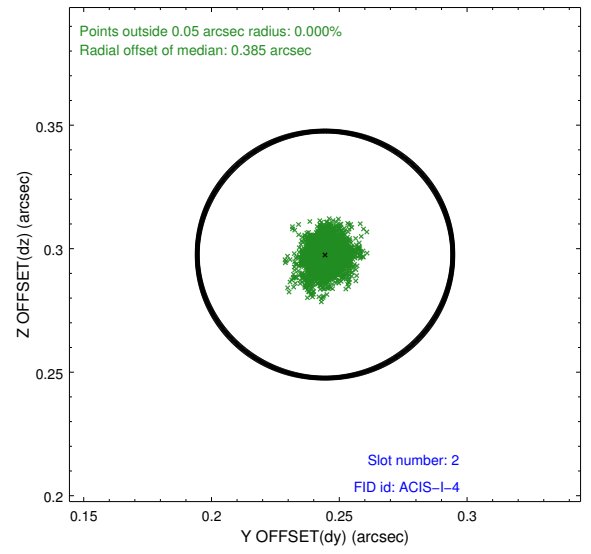
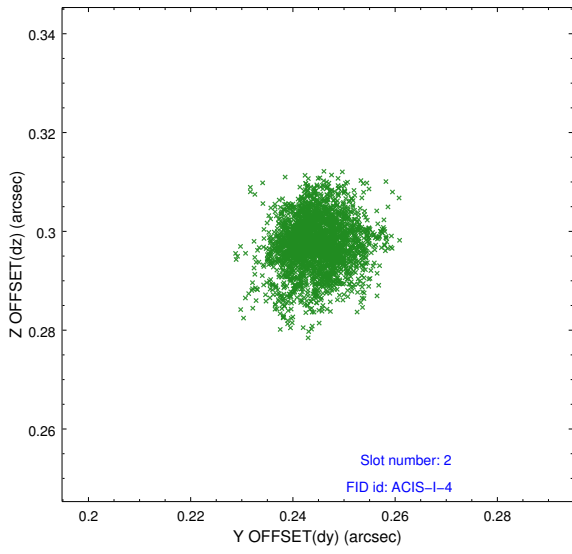
2.5.1 Slot 0



2.5.2 Slot 1



2.5.3 Slot 2



A Summary

A.1 Status

V&V Scientist	Joy Nichols
V&V Date (YYYY-MM-DD)	2017.10.02
V&V Edition	1
V&V Disposition and Status	OK
V&V Charge Time	10.071900077581

A.2 Comments