

V&V Reference Report

L2 ASCDS Version : 10.8.1

Observation 23143 - L2 Version 1
Chandra X-Ray Center

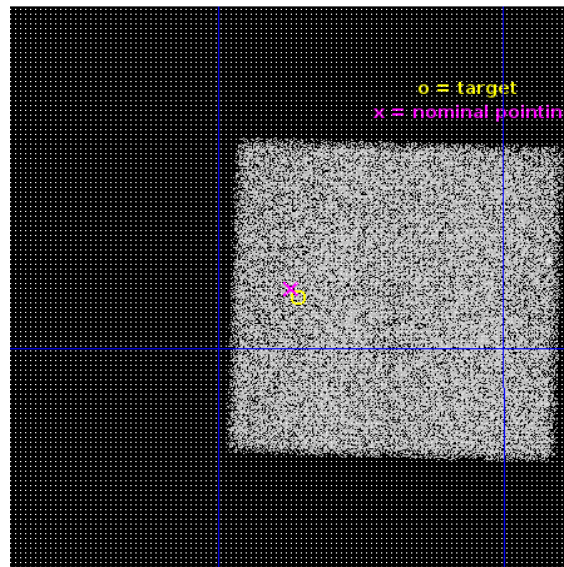
L2 Processing Date : Feb 5 2020

Contents

1	Front	2
2	OBI	3
2.1	OBI	3
2.1.1	Images	3
2.1.2	Bias	3
2.1.3	Parameters	4
2.1.4	Events	4
2.2	Compared Parameters	5
2.3	Aspect	6
2.4	Star Slots	9
2.4.1	Slot 3	9
2.4.2	Slot 4	10
2.4.3	Slot 5	11
2.4.4	Slot 6	12
2.4.5	Slot 7	13
2.5	FID Slots	14
2.5.1	Slot 0	14
2.5.2	Slot 1	15
2.5.3	Slot 2	16
A	Summary	17
A.1	Status	17
A.2	Comments	17

1 Front

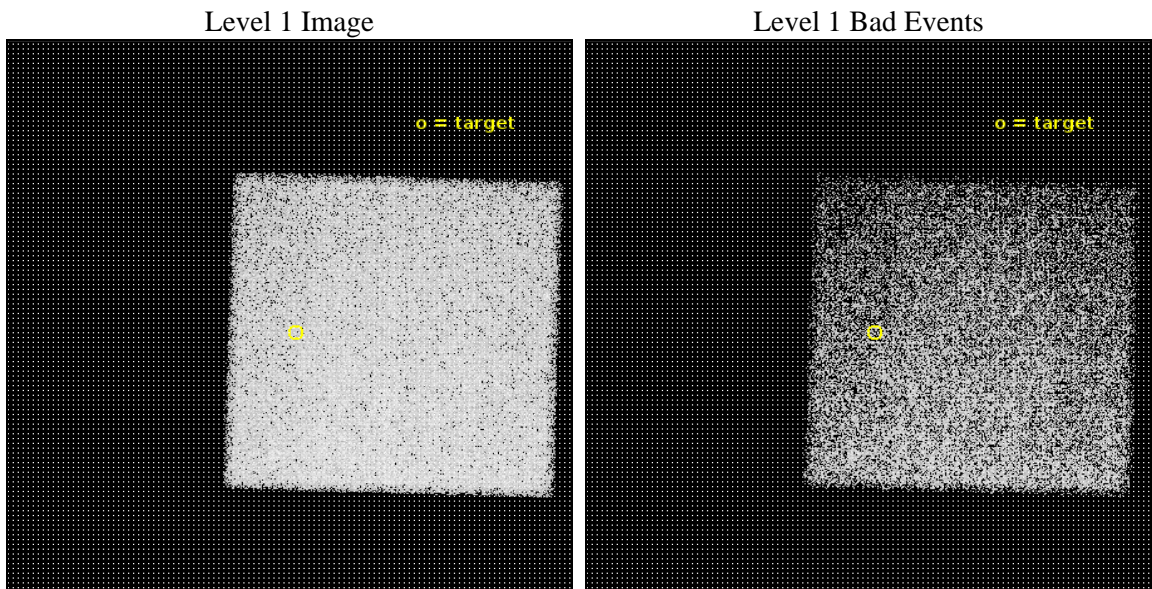
seq_num	704039	Sequence number
obs_id	23143	Observation id
title	DEFINING A BONA FIDE SAMPLE OF INTERMEDIATE-MASS BLACK HOLES:X-RAY CONFIRMATION OF OPTICALLY SELECTED AGN CANDIDATES	Proposal title
observer	Igor Chilingarian	Principal investigator
object	SDSSJ091421.52+045121.9	Source name
dtcycle	0	
cycle	P	events from which exps? Prim/Second/Both
ra_targ	138.589661	Observer's specified target RA [deg]
dec_targ	4.856084	Observer's specified target Dec [deg]
ra_nom	138.59270114362	Nominal RA [deg]
dec_nom	4.8603721306294	Nominal Dec [deg]
roll_nom	1.6127626510142	Nominal Roll [deg]
revision	1	Processing version of data
ontime	23157.0	Sum of GTIs [s]
livetime	22844.487412201	Livetime [s]
ontime7	23157.0	Sum of GTIs [s]
l2events	94862	Number of level 2 events



2 OBI

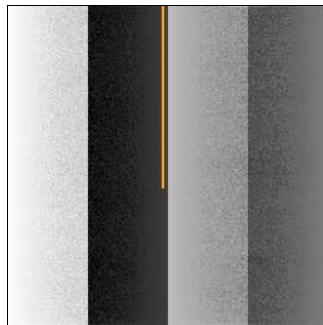
2.1 OBI

2.1.1 Images



2.1.2 Bias

Chip 7



2.1.3 Parameters

obi_num	0	Obi number	sched_exp_time	23068.630000	[s] Scheduled observation exposure time
ascdsver	10.8.1	Processing system revision	ontime	23157.0	Sum of GTIs [s]
caldsver	4.8.4.2	 	ontime7	23157.0	Sum of GTIs [s]
date	2020-02-06T02:43:15	Date and time of file creation	l1events	225787	Number of level 1 events
revision	1	Processing version of data			

2.1.4 Events

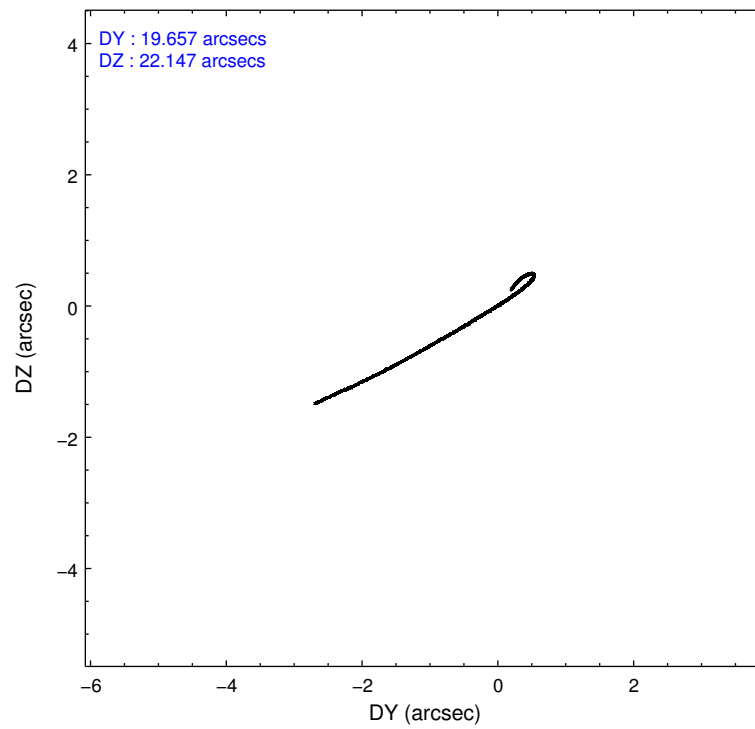
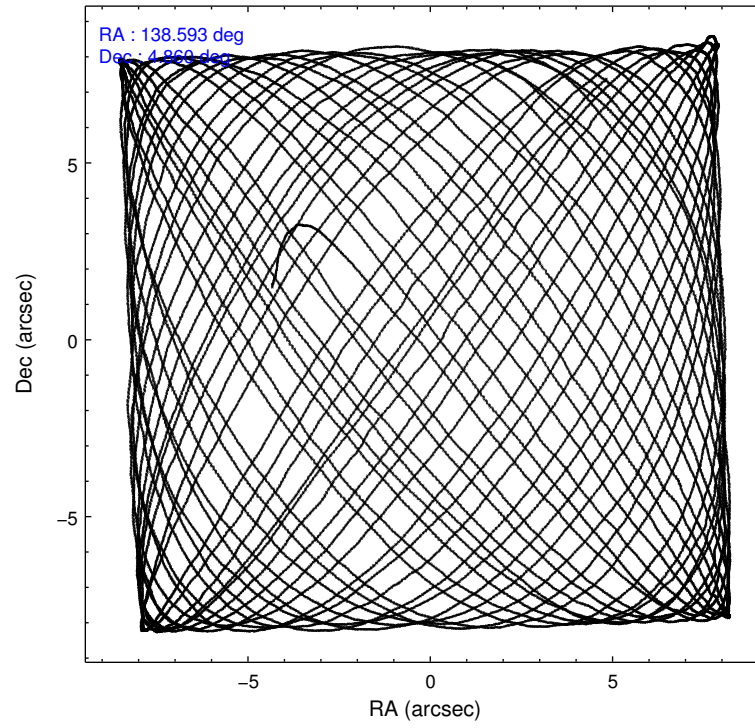
	ccd 7
level 1 events	225787
rejected events	128303
rejected %	56%

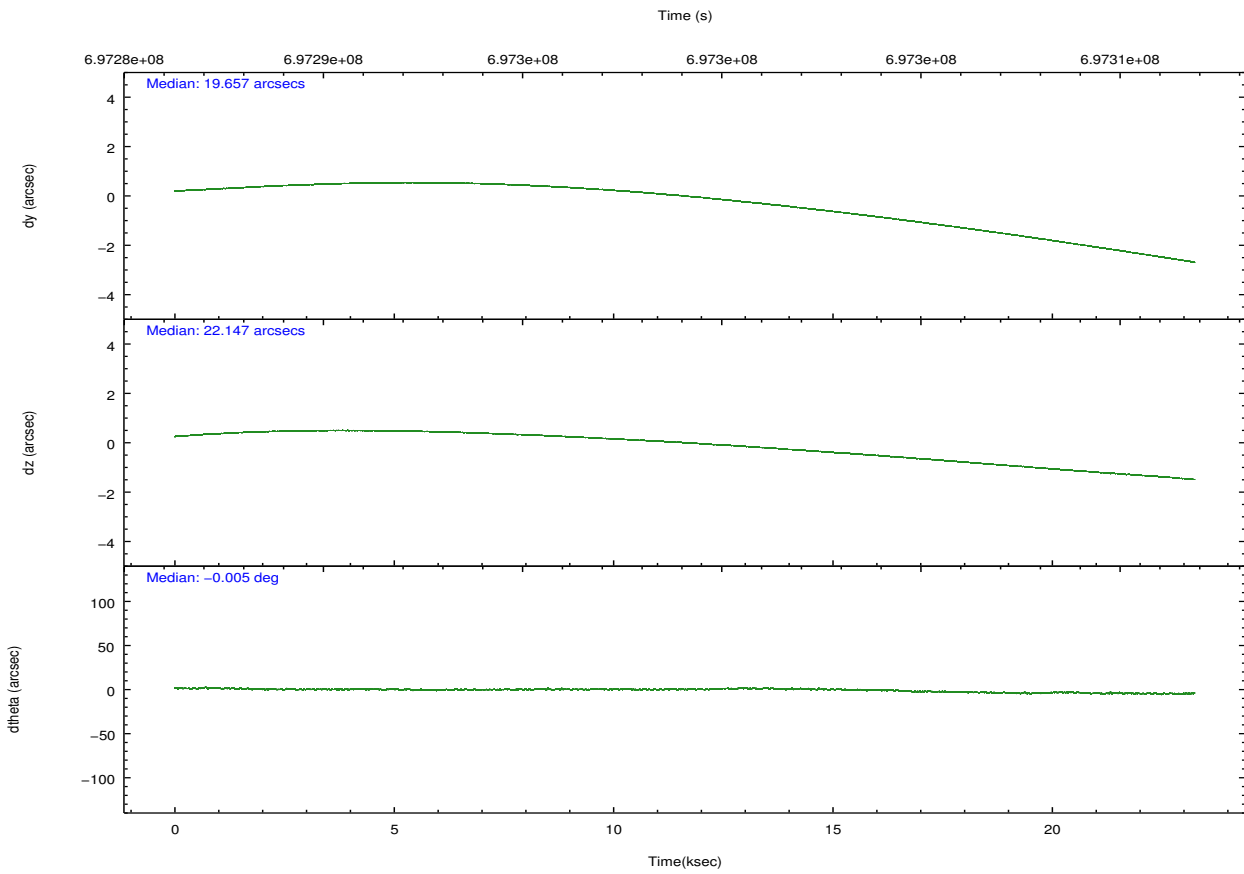
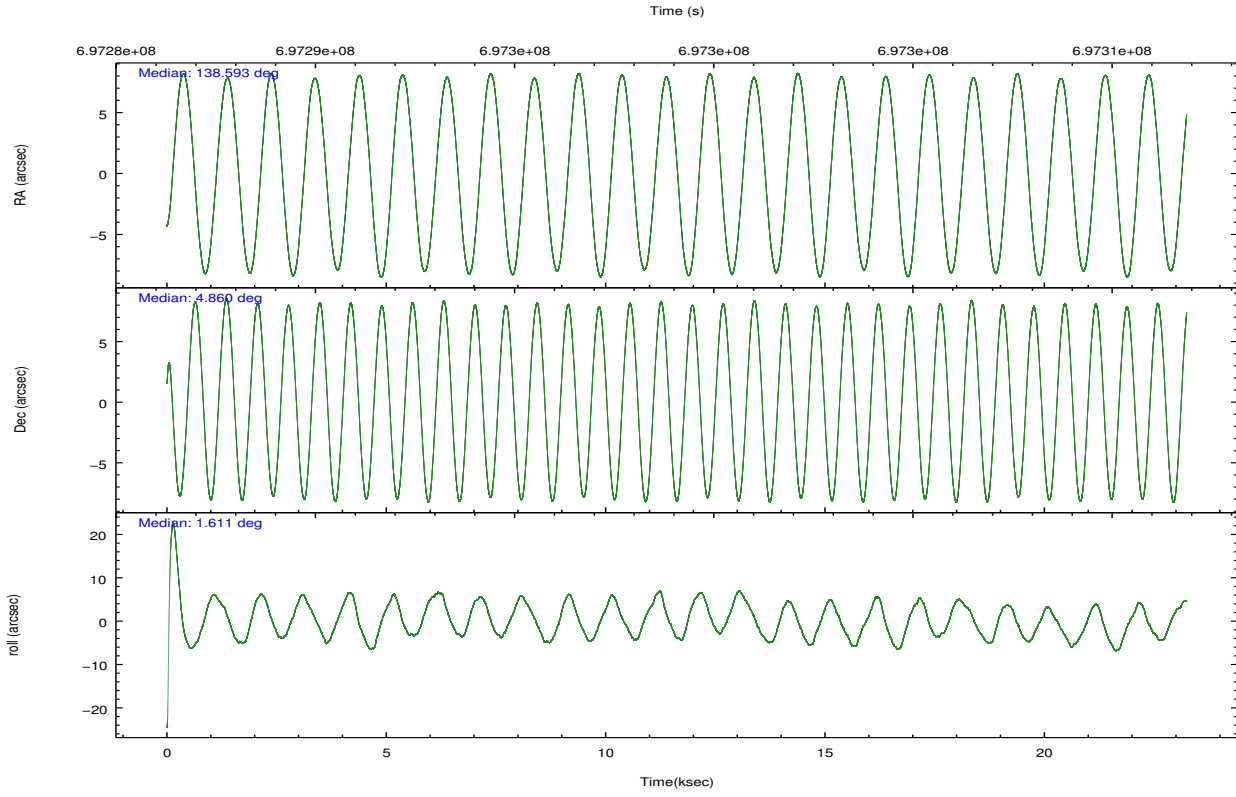
	ccd 7
grade 0 events	7822
	3%
grade 1 events	371
	0%
grade 2 events	20218
	8%
grade 3 events	7467
	3%
grade 4 events	7504
	3%
grade 5 events	21374
	9%
grade 6 events	54500
	24%
grade 7 events	106531
	47%

2.2 Compared Parameters

Parameter	Planned	Actual	Parameter	Planned	Actual
Instrument	ACIS	ACIS	Obspar format version number	7	7
Detector	ACIS-7	ACIS-7	Obspar file type	PREDICTED	ACTUAL
Grating	NONE	NONE	Obspar update status	NONE	UPDATED
Data mode	VFAINT	VFAINT	Number of optional ACIS chips dropped	0	0
Observation mode	POINTING	POINTING	On-chip summing requested	N	N
[deg] Pointing RA	138.569435	138.5927011436204	Subarray requested	NONE	NONE
[deg] Pointing Dec	4.845683	4.860372130629356	Alternating exposures requested	N	N
[deg] Pointing Roll	1.458135	1.612762651014209	[s] Primary exposure time	0.000000	3
[mm] SIM focus pos	-0.684267	-0.6828225247311905			
[mm] SIM defocus	0	0.001444936568705701			
[mm] SIM translation stage pos	-190.132523	-190.1400660498719			
[mm] SIM translation stage offset	0	0.00754346686406393			
[s] Observation start time (MET)	697287617.184000	697286835.52832			
Observation start date	2020-02-05T10:59:08	2020-02-05T10:47:15			
[s] Observation end time (MET)	697310686.184000	697312002.86734			
Observation end date	2020-02-05T17:23:37	2020-02-05T17:46:42			
Read mode	TIMED	TIMED			

2.3 Aspect





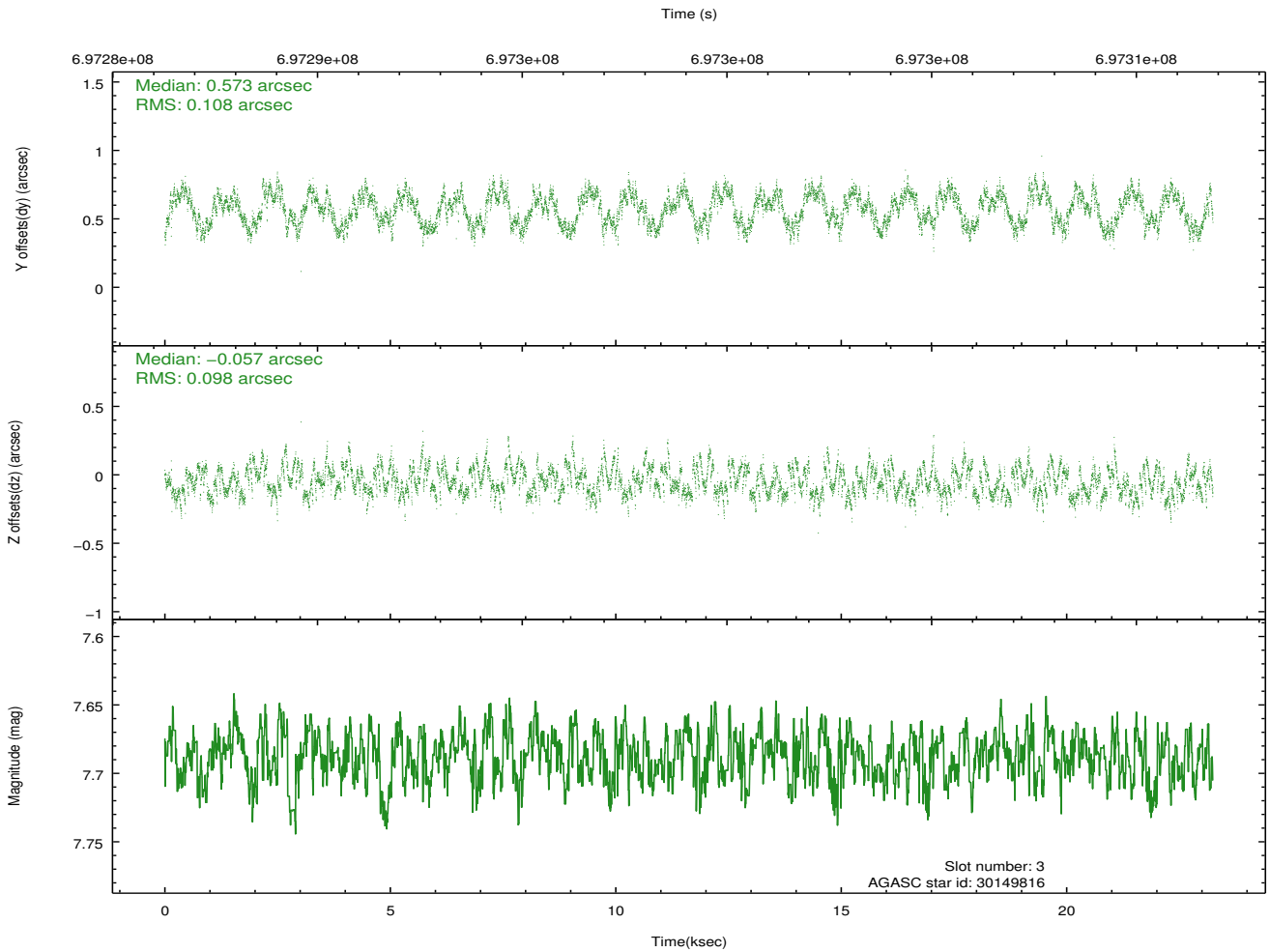
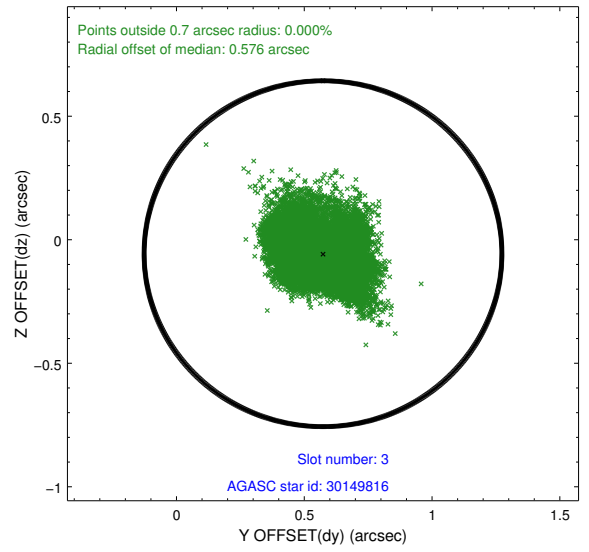
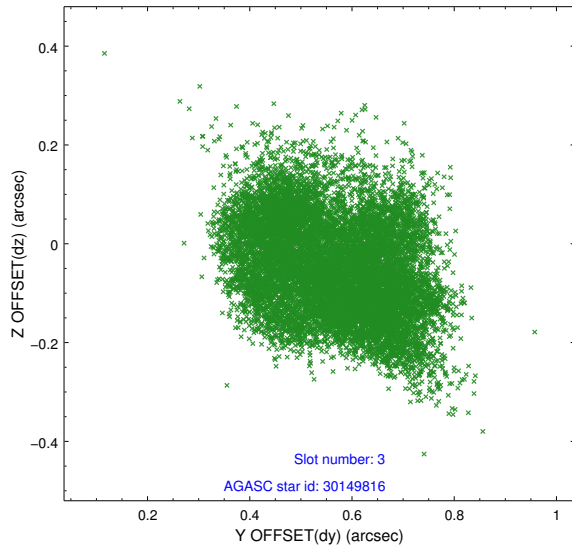
Slot Statistics

slot	status	used	id	mag	n_pts	frac_pts	med_dy	med_dz	dr1	dr2	ra	dec	mean_y	mean_x
0	FID		ACIS-S-2	7.17	5670	1.000	-0.357	-0.307	0.018	0.067	0.000000	0.000000	-772.64	-1743
1	FID		ACIS-S-4	7.26	5670	1.000	0.811	0.255	0.018	0.035	0.000000	0.000000	2141.71	165
2	FID		ACIS-S-5	7.23	5669	1.000	-0.480	0.057	0.026	0.056	0.000000	0.000000	-1825.47	158
3	GUIDE	used	30149816	7.69	11335	1.000	0.573	-0.057	0.160	0.233	138.723580	4.442951	514.60	-1462
4	GUIDE	used	30153480	8.85	11328	1.000	0.163	0.678	0.188	0.373	138.445859	4.420857	-479.35	-1518
5	GUIDE	used	30550904	8.82	11316	1.000	-0.240	-0.541	0.159	0.242	139.133527	5.405000	2071.18	1959
6	GUIDE	used	30551192	6.66	11339	1.000	-0.258	0.251	0.136	0.271	137.981814	5.468631	-2050.15	2296
7	GUIDE	used	30551496	8.54	11327	1.000	-0.253	-0.353	0.108	0.179	138.916701	5.127407	1270.19	982

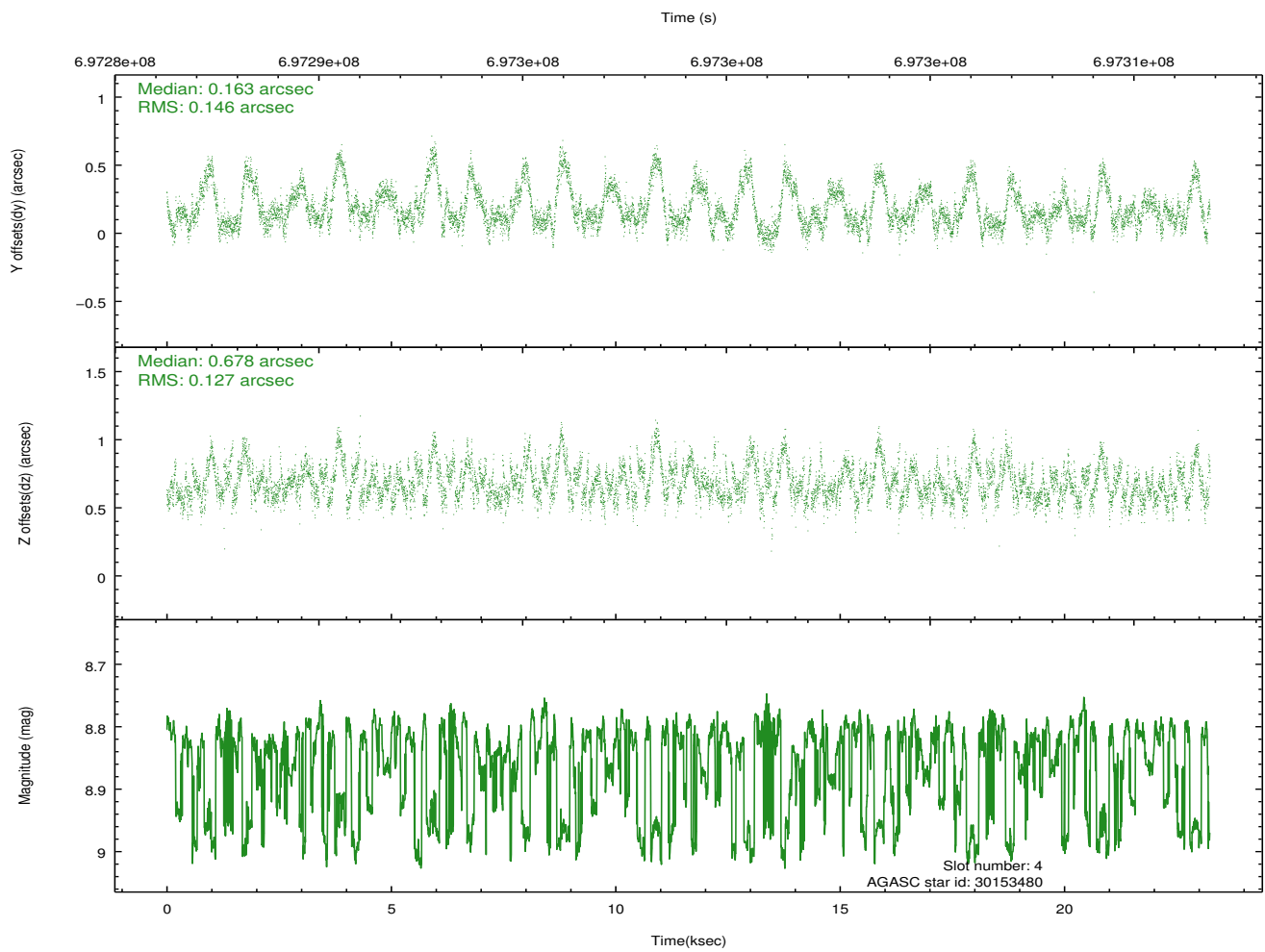
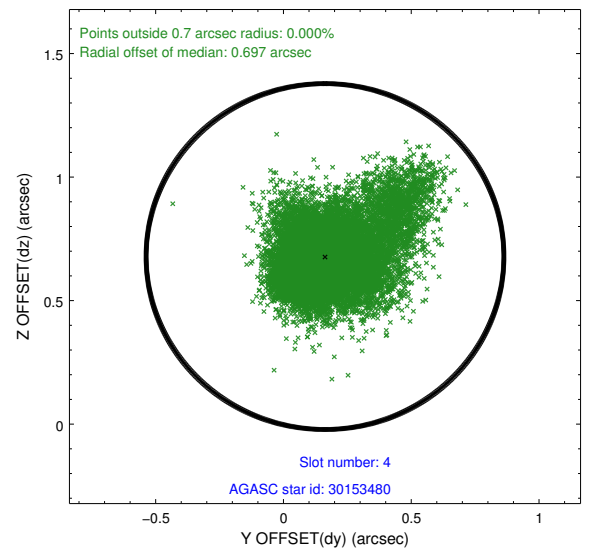
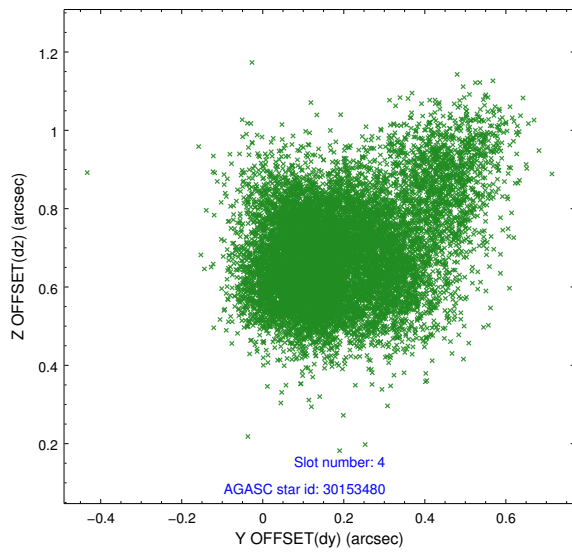
∞

2.4 Star Slots

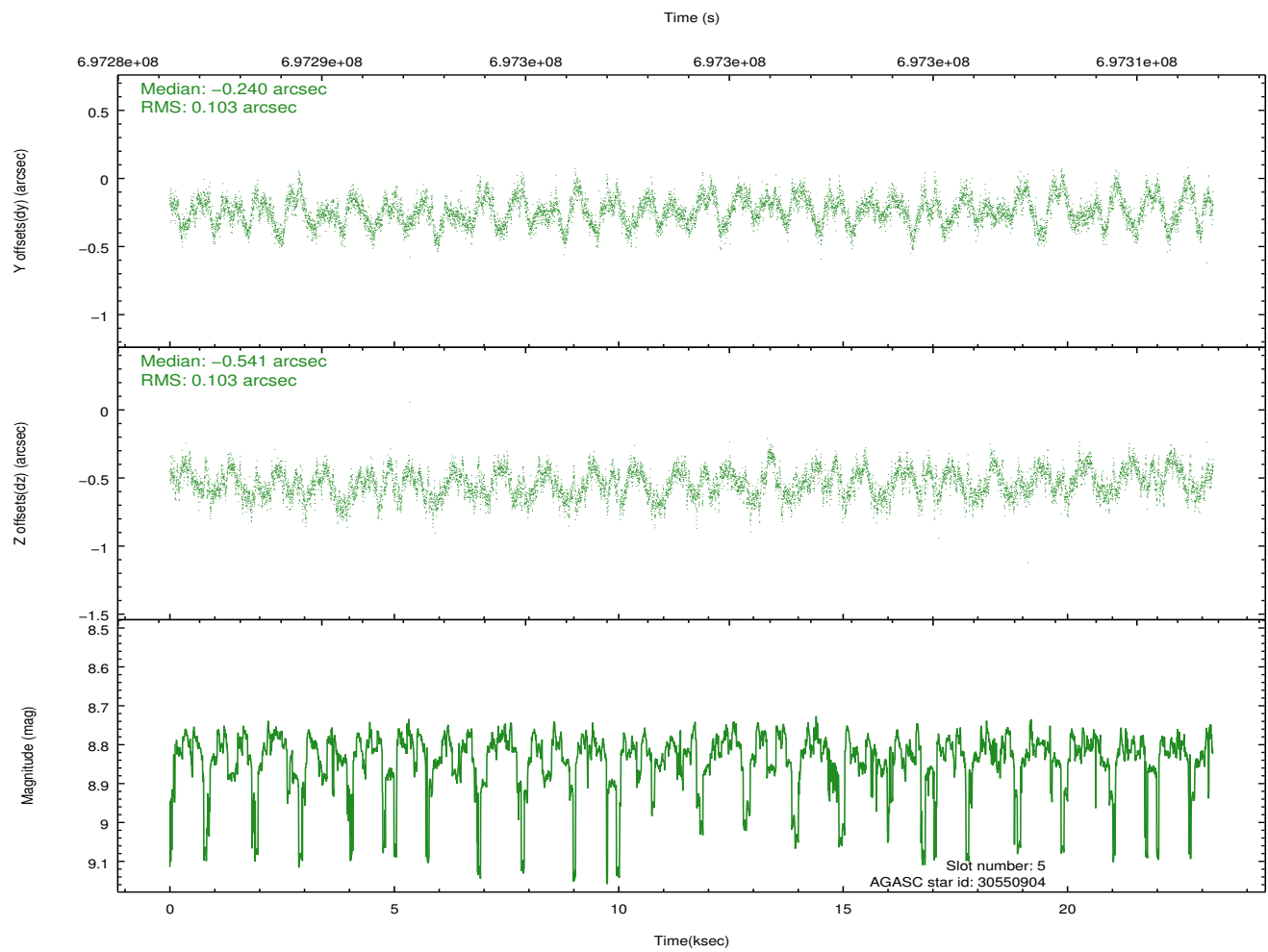
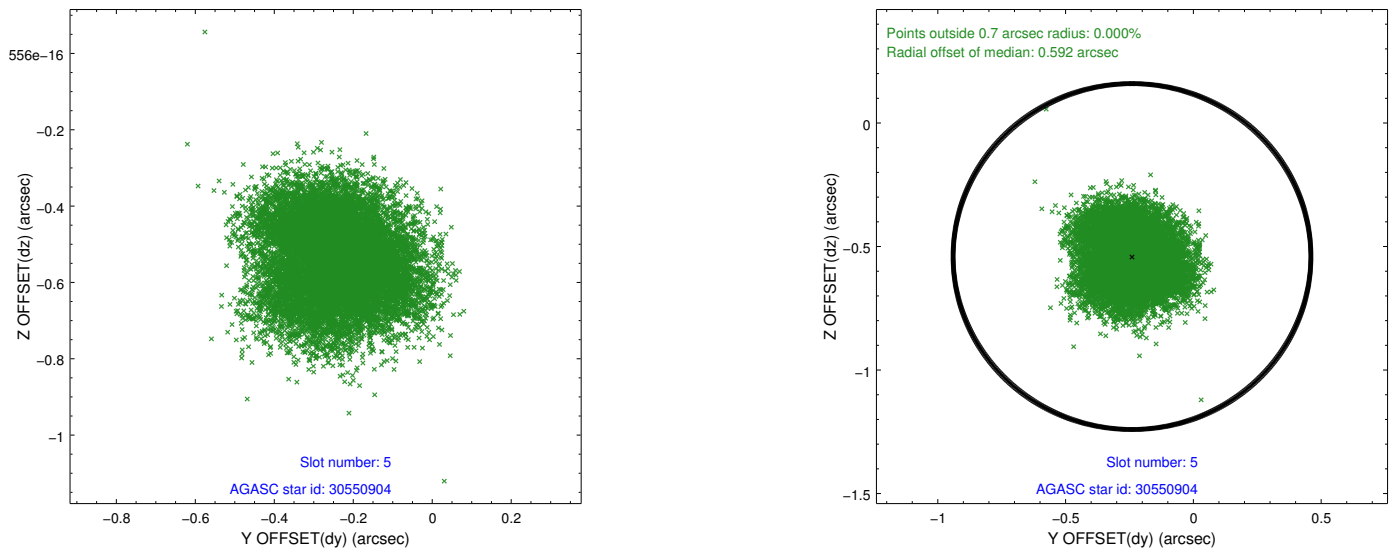
2.4.1 Slot 3



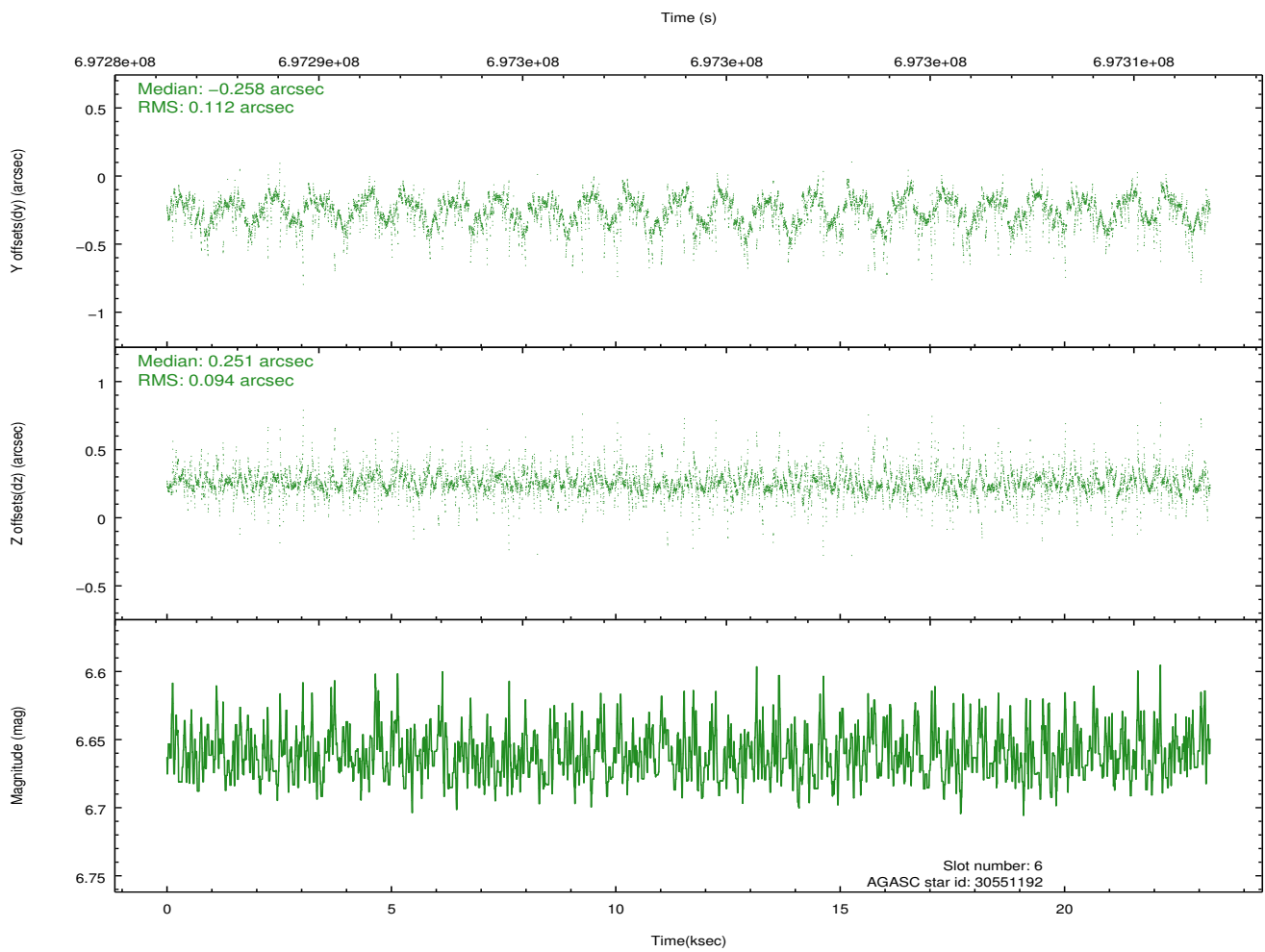
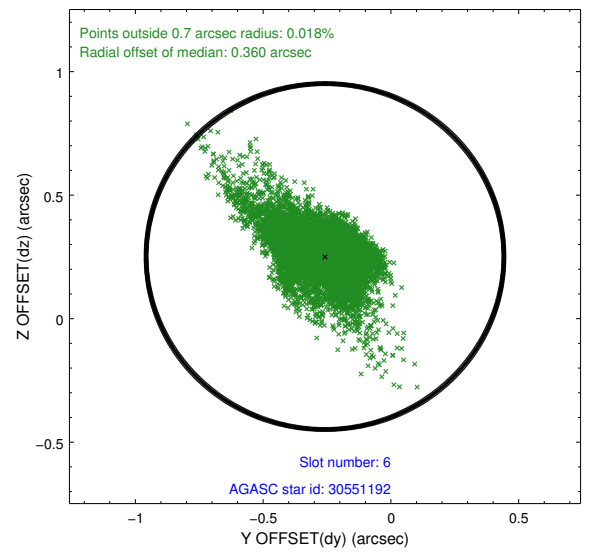
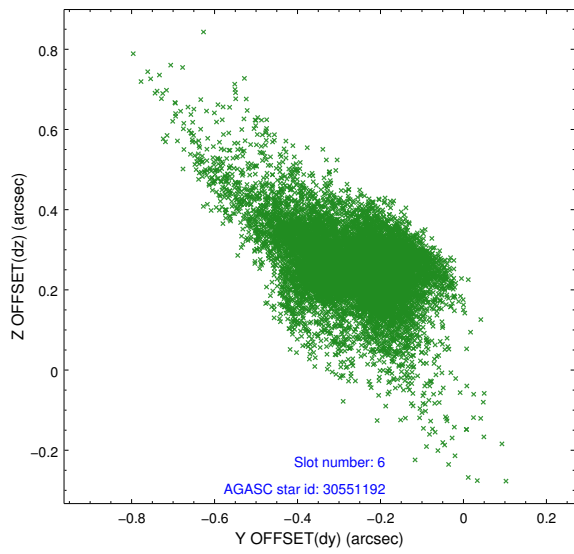
2.4.2 Slot 4



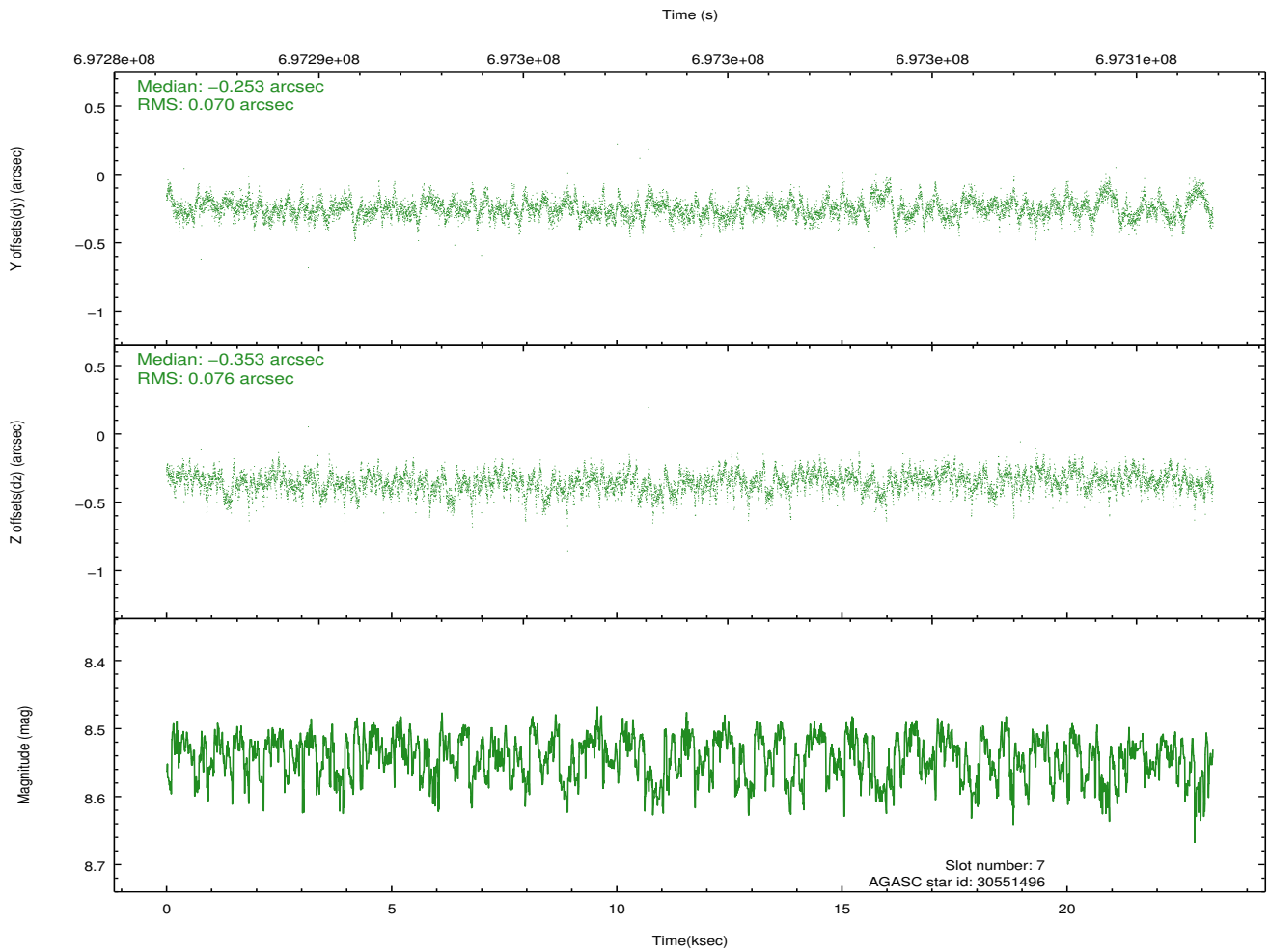
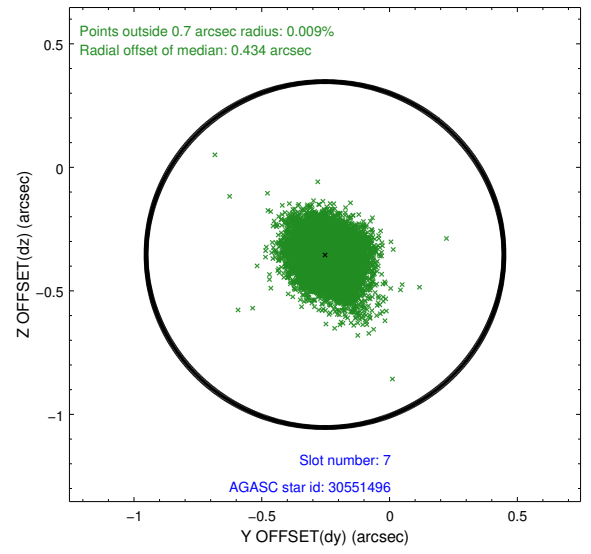
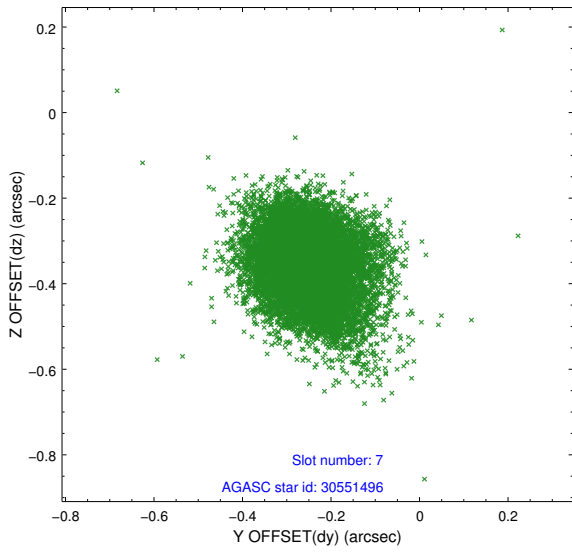
2.4.3 Slot 5



2.4.4 Slot 6

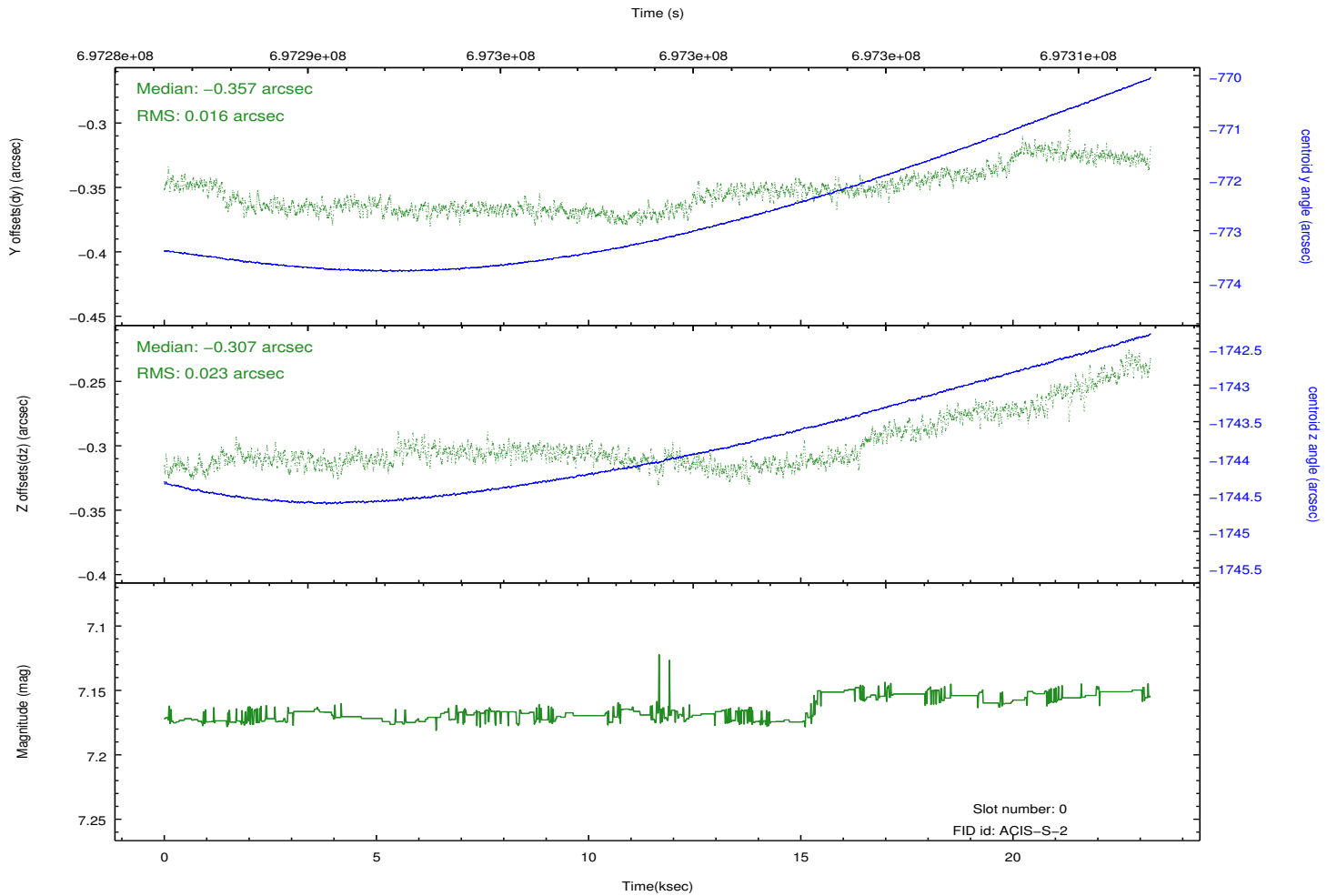
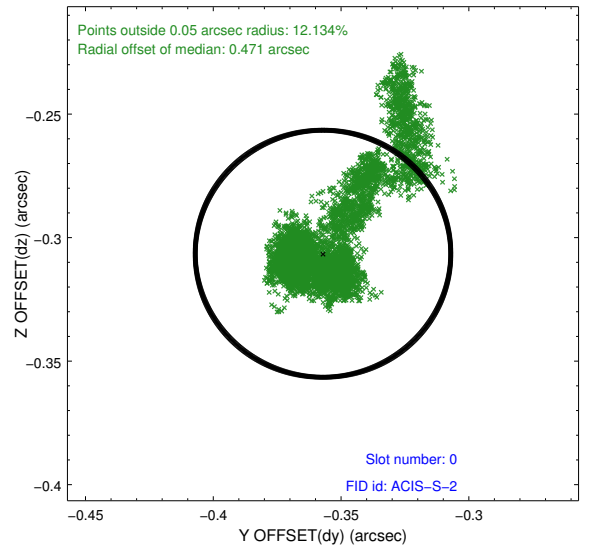
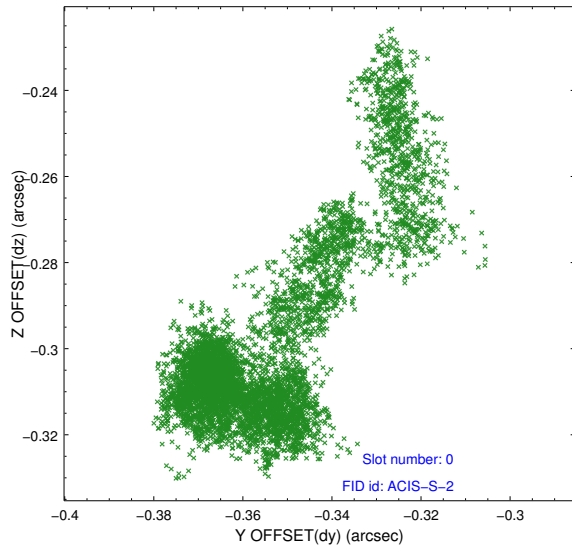


2.4.5 Slot 7

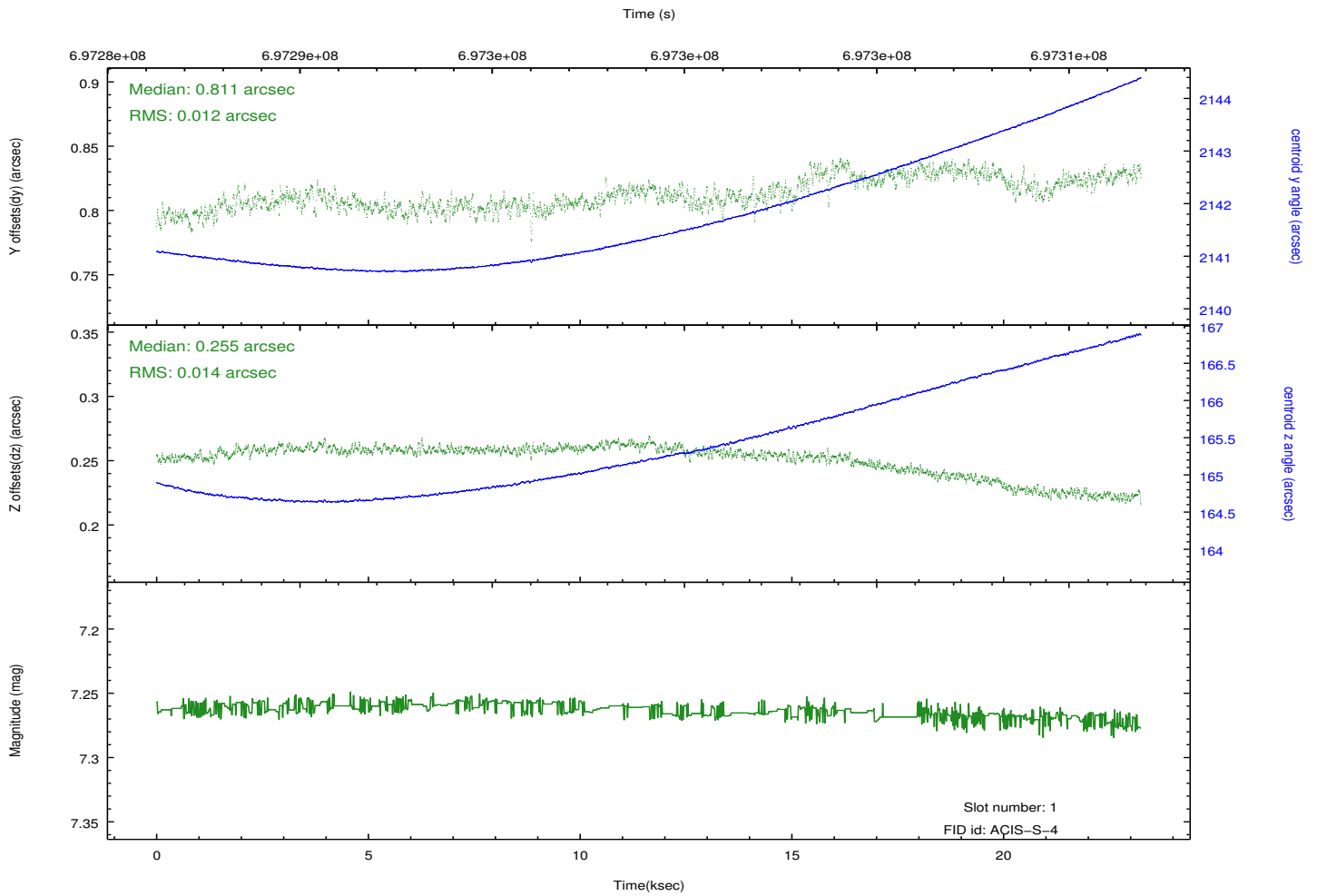
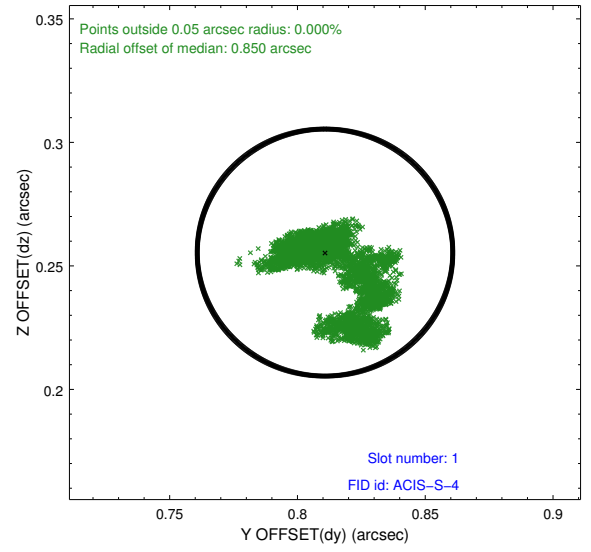
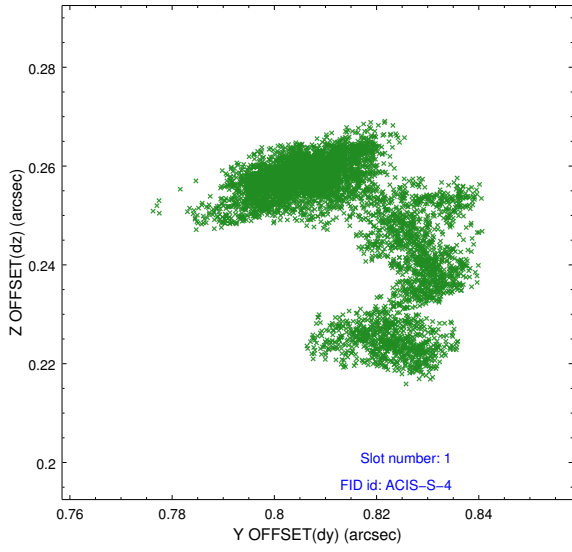


2.5 FID Slots

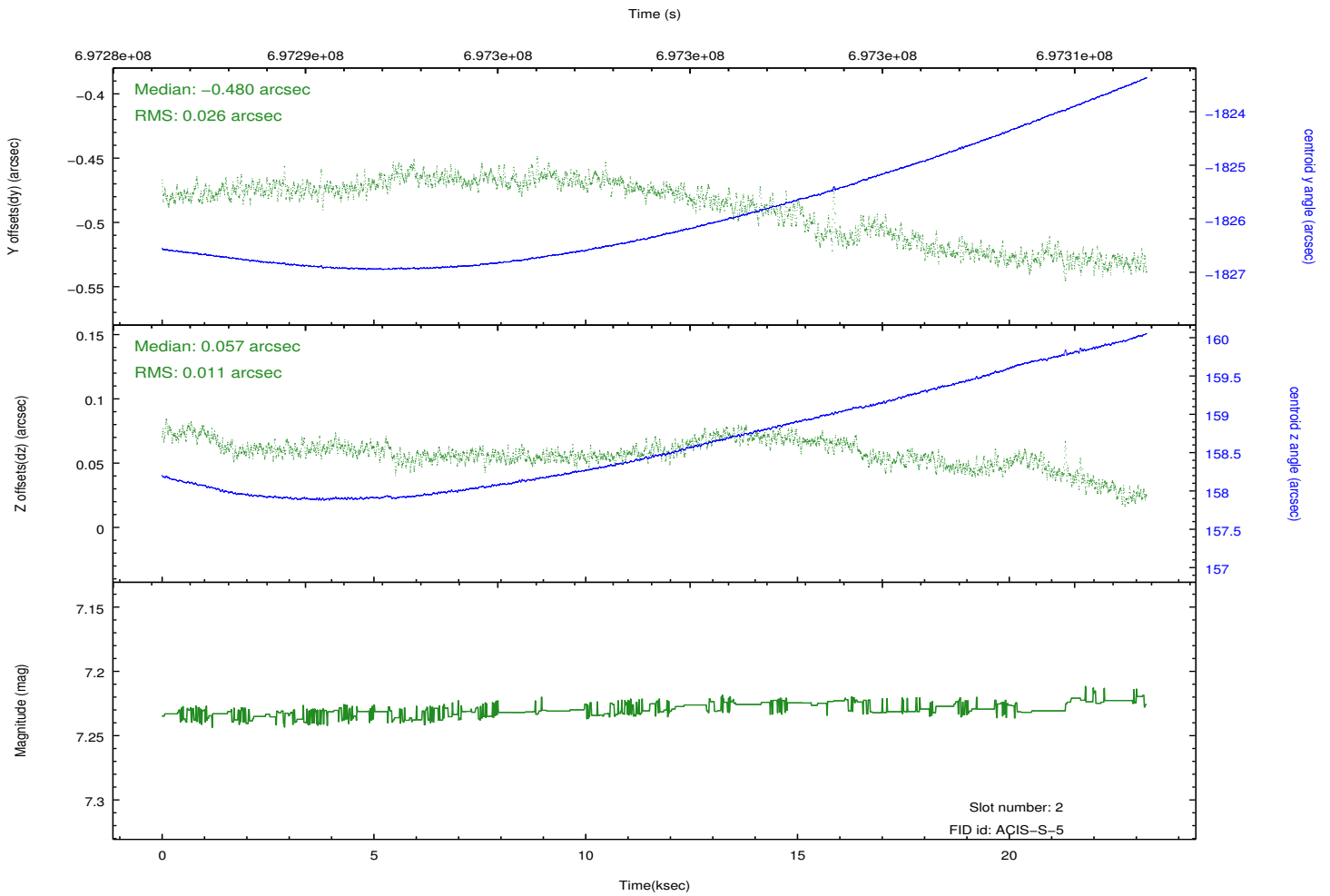
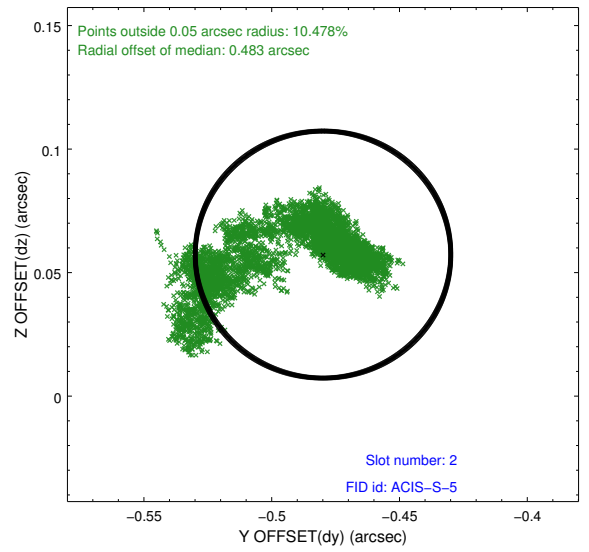
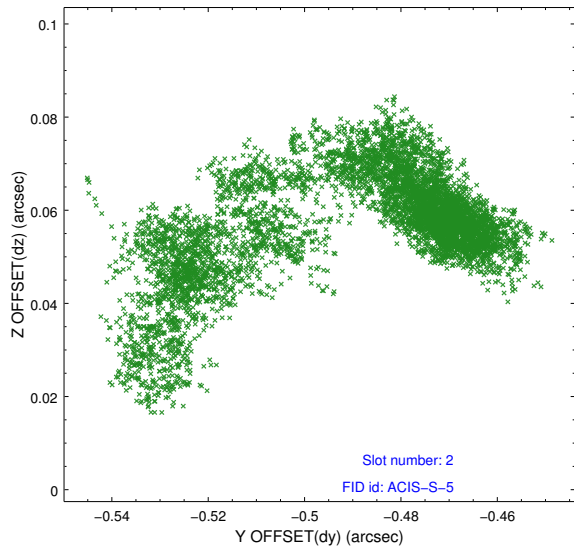
2.5.1 Slot 0



2.5.2 Slot 1



2.5.3 Slot 2



A Summary

A.1 Status

V&V Scientist	Beth Sundheim
V&V Date (YYYY-MM-DD)	2020.02.06
V&V Edition	1
V&V Disposition and Status	OK
V&V Charge Time	23.157

A.2 Comments