

V&V Reference Report

L2 ASCDS Version : 10.8.1

Observation 23196 - L2 Version 1
Chandra X-Ray Center

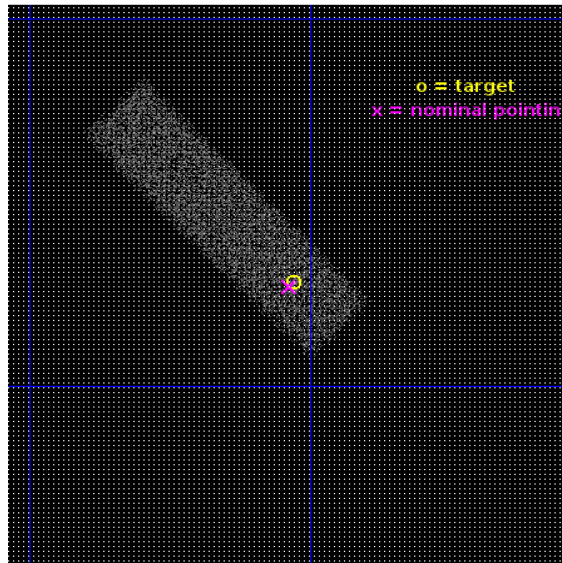
L2 Processing Date : Mar 13 2020

Contents

1	Front	2
2	OBI	3
2.1	OBI	3
2.1.1	Images	3
2.1.2	Bias	3
2.1.3	Parameters	4
2.1.4	Events	4
2.2	Compared Parameters	5
2.3	Aspect	6
2.4	Star Slots	9
2.4.1	Slot 3	9
2.4.2	Slot 4	10
2.4.3	Slot 5	11
2.4.4	Slot 6	12
2.4.5	Slot 7	13
2.5	FID Slots	14
2.5.1	Slot 0	14
2.5.2	Slot 1	15
2.5.3	Slot 2	16
A	Summary	17
A.1	Status	17
A.2	Comments	17

1 Front

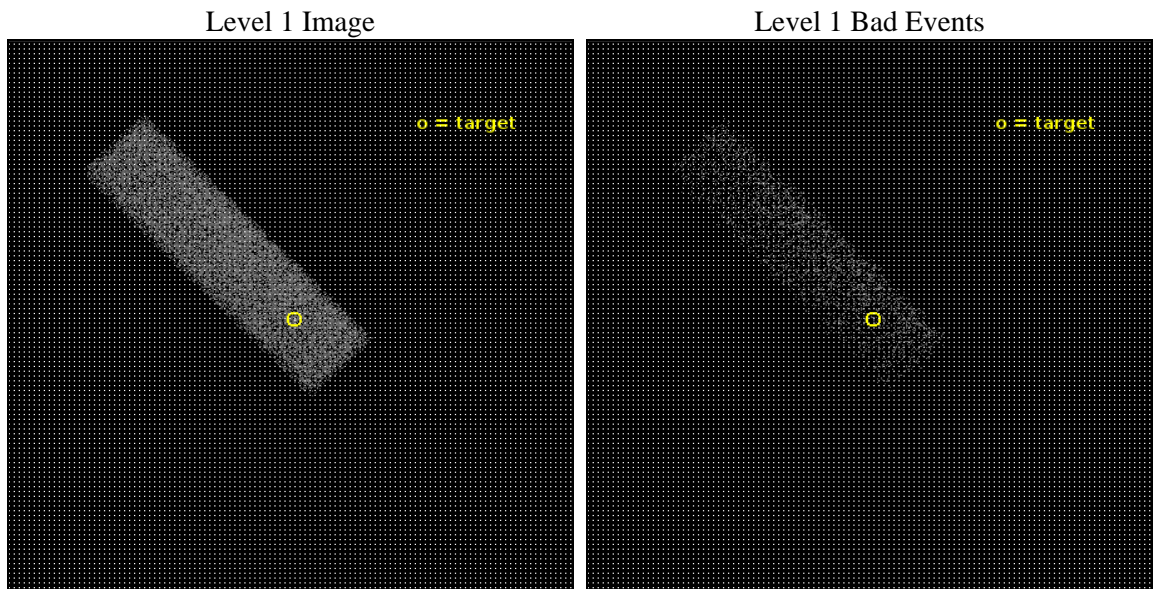
seq_num	704047	Sequence number
obs_id	23196	Observation id
title	C-BASS: A Chandra Legacy Survey of AGN at the Highest Spatial Resolutions	Proposal title
observer	Michael Koss	Principal investigator
object	Mrk728	Source name
dtcycle	0	
cycle	P	events from which exps? Prim/Second/Both
ra_targ	165.257355	Observer's specified target RA [deg]
dec_targ	11.047063	Observer's specified target Dec [deg]
ra_nom	165.25934071706	Nominal RA [deg]
dec_nom	11.045141431852	Nominal Dec [deg]
roll_nom	225.50519252742	Nominal Roll [deg]
revision	1	Processing version of data
ontime	10060.79940033	Sum of GTIs [s]
livetime	9569.8653099302	Livetime [s]
ontime7	10060.79940033	Sum of GTIs [s]
l2events	12918	Number of level 2 events



2 OBI

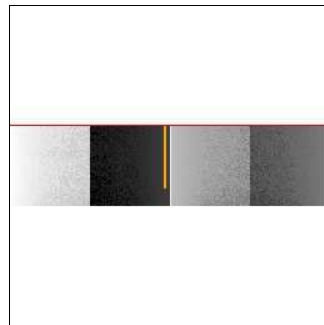
2.1 OBI

2.1.1 Images



2.1.2 Bias

Chip 7



2.1.3 Parameters

obi_num	0	Obi number	sched_exp_time	10000.000000	[s] Scheduled observation exposure time
ascdsver	10.8.1	Processing system revision	ontime	10060.79940033	Sum of GTIs [s]
caldsver	4.8.4.2	 	ontime7	10060.79940033	Sum of GTIs [s]
date	2020-03-13T21:14:42	Date and time of file creation	l1events	26749	Number of level 1 events
revision	1	Processing version of data			

2.1.4 Events

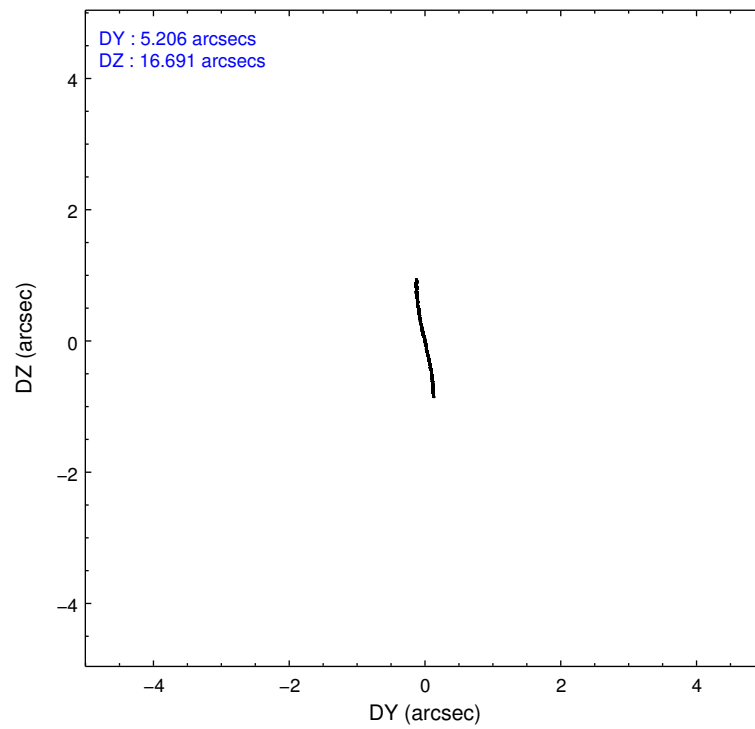
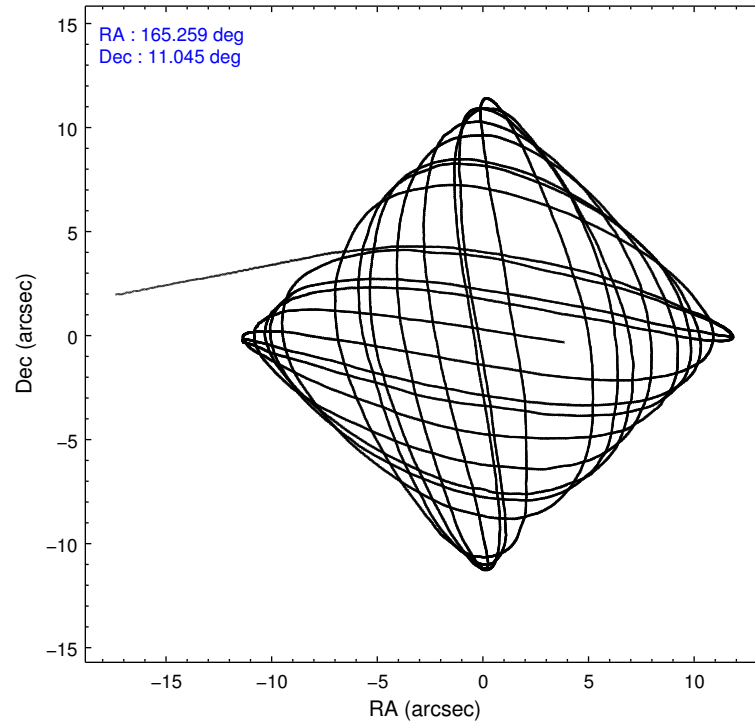
	ccd 7
level 1 events	26749
rejected events	13441
rejected %	50%

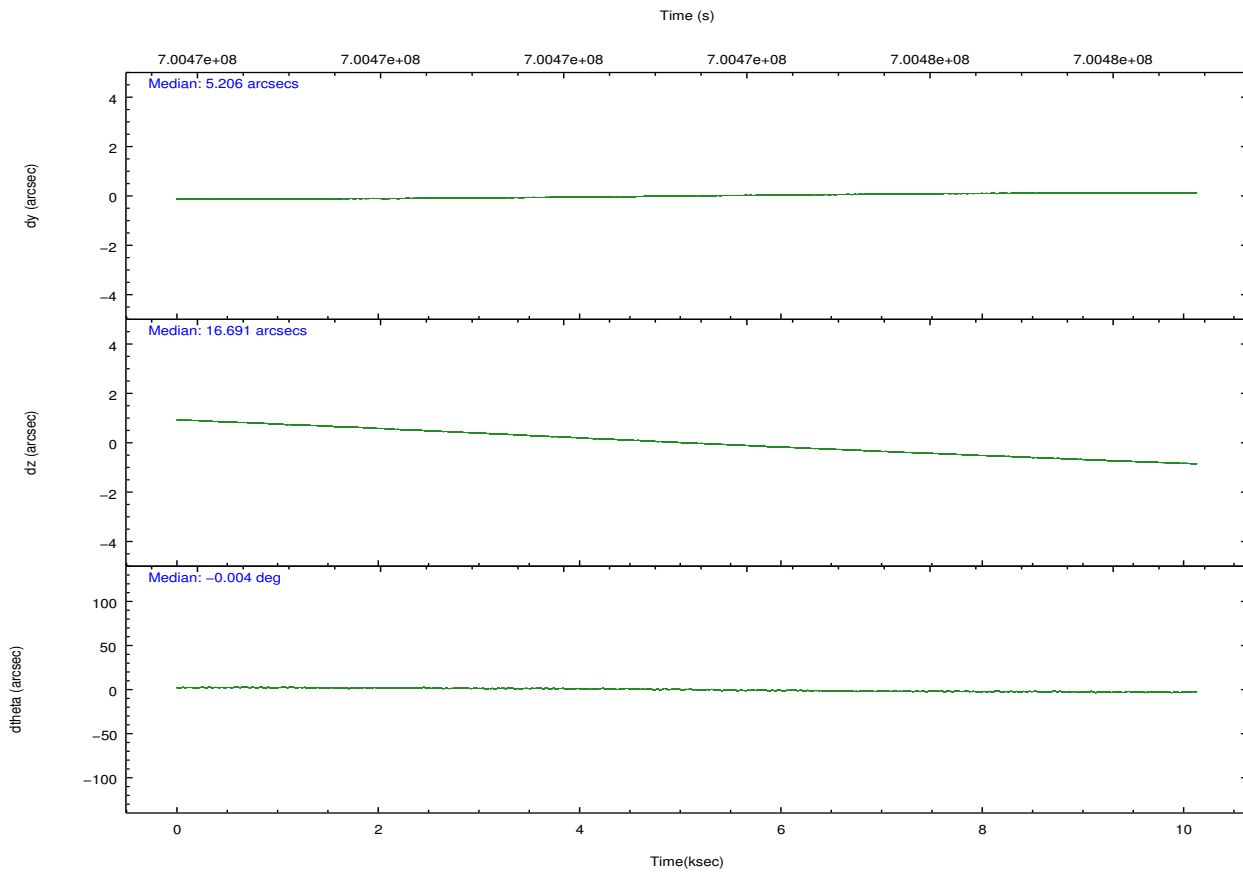
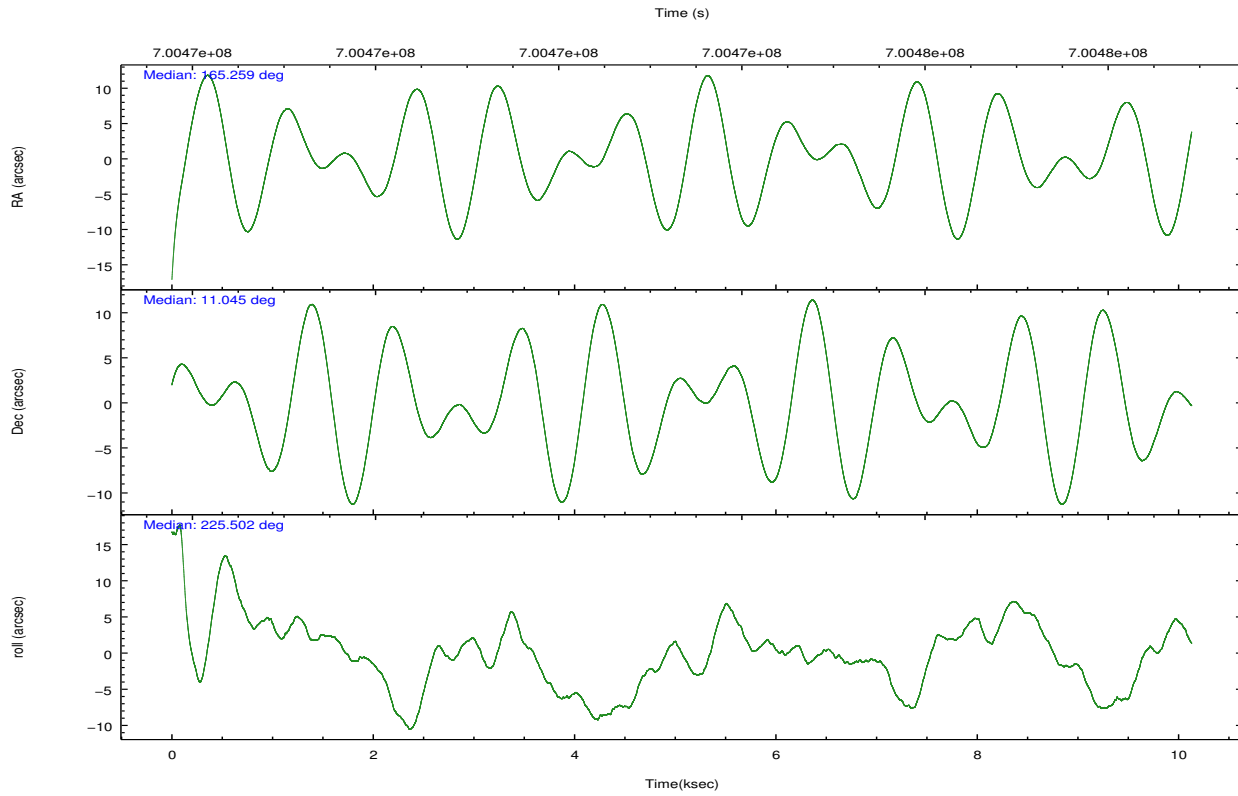
	ccd 7
grade 0 events	1393
	5%
grade 1 events	52
	0%
grade 2 events	2846
	10%
grade 3 events	1423
	5%
grade 4 events	1379
	5%
grade 5 events	2702
	10%
grade 6 events	6268
	23%
grade 7 events	10686
	39%

2.2 Compared Parameters

Parameter	Planned	Actual	Parameter	Planned	Actual
Instrument	ACIS	ACIS	Obspar format version number	7	7
Detector	ACIS-7	ACIS-7	Obspar file type	PREDICTED	ACTUAL
Grating	NONE	NONE	Obspar update status	NONE	UPDATED
Data mode	VFAINT	VFAINT	Number of optional ACIS chips dropped	0	0
Observation mode	POINTING	POINTING	On-chip summing requested	N	N
[deg] Pointing RA	165.266004	165.2593407170648	Subarray requested	CUSTOM	1/4
[deg] Pointing Dec	11.071794	11.0451414318525	Subarray start row	385	385
[deg] Pointing Roll	225.347293	225.5051925274154	Subarray row count	256	256
[mm] SIM focus pos	-0.684267	-0.6828225247311905	Alternating exposures requested	N	N
[mm] SIM defocus	0	0.001444936568705701	[s] Primary exposure time	0.000000	0.8
[mm] SIM translation stage pos	-190.132523	-190.1425803651734			
[mm] SIM translation stage offset	0	0.01005778216563158			
[s] Observation start time (MET)	700468396.184000	700467007.38343			
Observation start date	2020-03-13T06:32:07	2020-03-13T06:10:07			
[s] Observation end time (MET)	700478396.184000	700479316.09668			
Observation end date	2020-03-13T09:18:47	2020-03-13T09:35:16			
Read mode	TIMED	TIMED			

2.3 Aspect





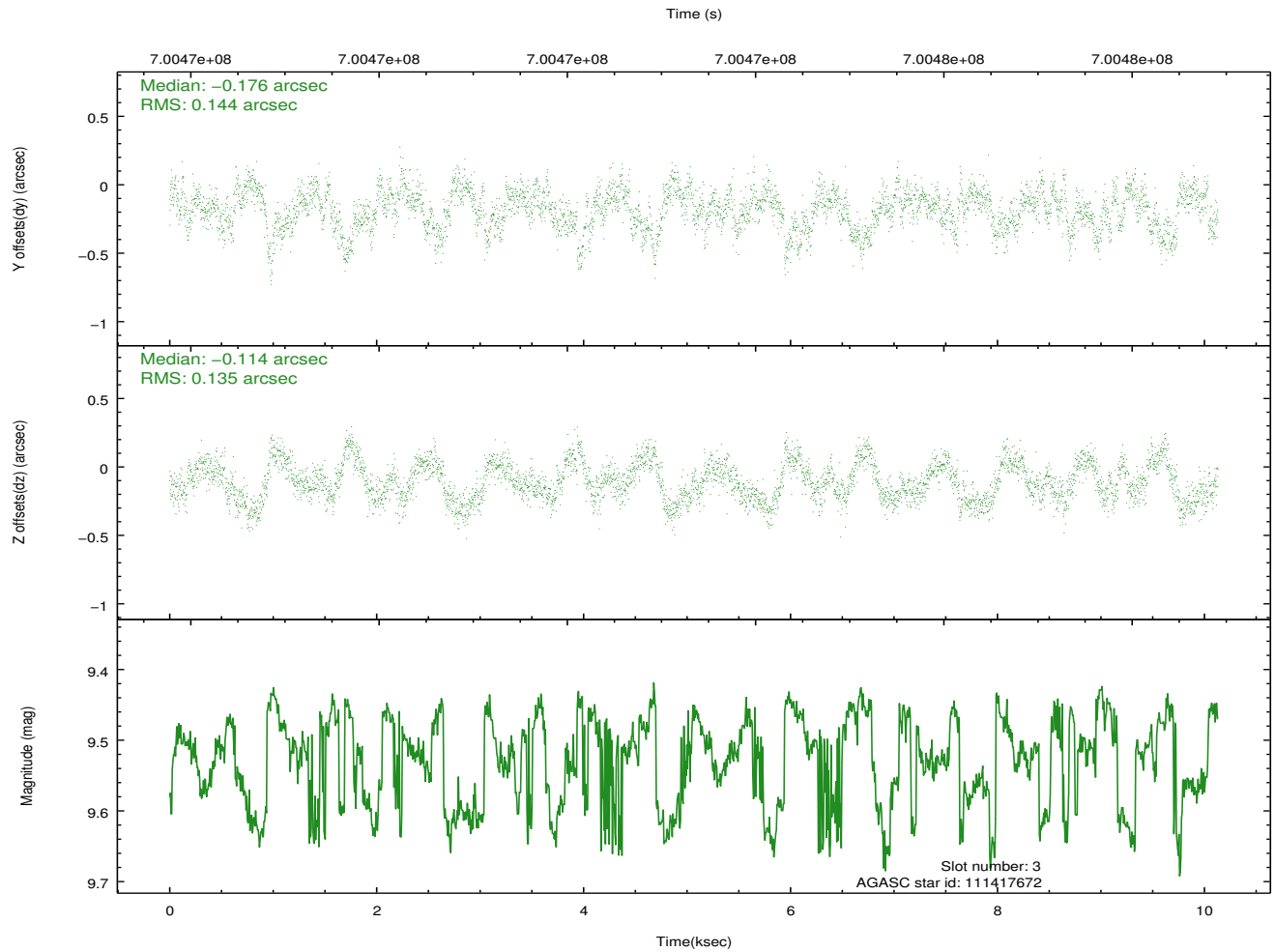
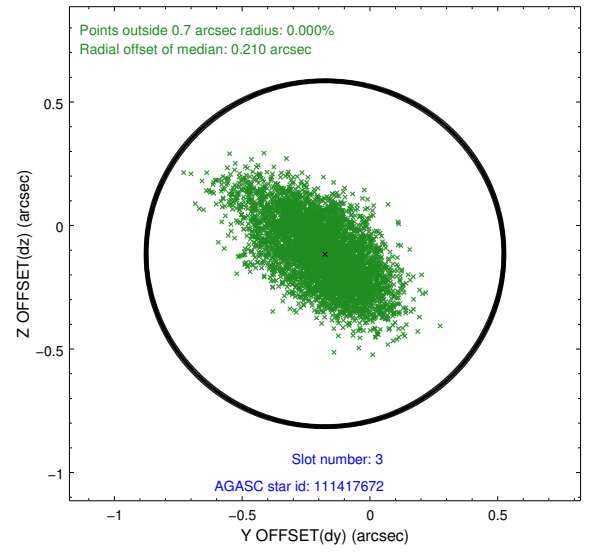
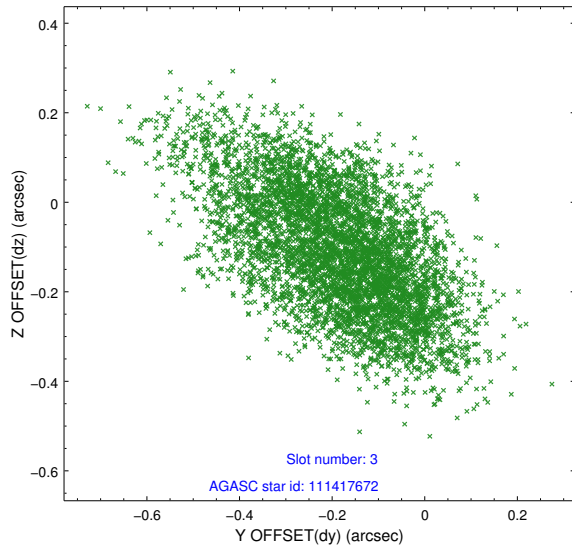
Slot Statistics

slot	status	used	id	mag	n_pts	frac_pts	med_dy	med_dz	dr1	dr2	ra	dec	mean_y	mea
0	FID		ACIS-S-2	6.98	2471	1.000	-0.253	-0.076	0.025	0.037	0.000000	0.000000	-758.15	-1738
1	FID		ACIS-S-4	7.11	2471	1.000	0.519	0.144	0.012	0.020	0.000000	0.000000	2155.65	170
2	FID		ACIS-S-5	7.11	2471	1.000	-0.296	-0.058	0.022	0.033	0.000000	0.000000	-1810.37	164
3	GUIDE	used	111417672	9.52	4934	1.000	-0.176	-0.114	0.206	0.352	164.566594	10.787157	2465.49	-1040
4	GUIDE	used	111417944	8.91	4939	1.000	0.262	0.036	0.095	0.161	164.863648	11.633672	-440.24	-2432
5	GUIDE	used	111419576	8.51	4941	1.000	-0.053	-0.022	0.093	0.150	165.200125	11.970471	-2137.38	-2438
6	GUIDE	used	111420784	9.41	4933	1.000	-0.052	0.035	0.169	0.266	165.354067	11.539798	-1416.49	-963
7	GUIDE	used	111421496	6.74	4940	1.000	0.018	0.060	0.099	0.165	164.921203	11.705870	-767.19	-2473

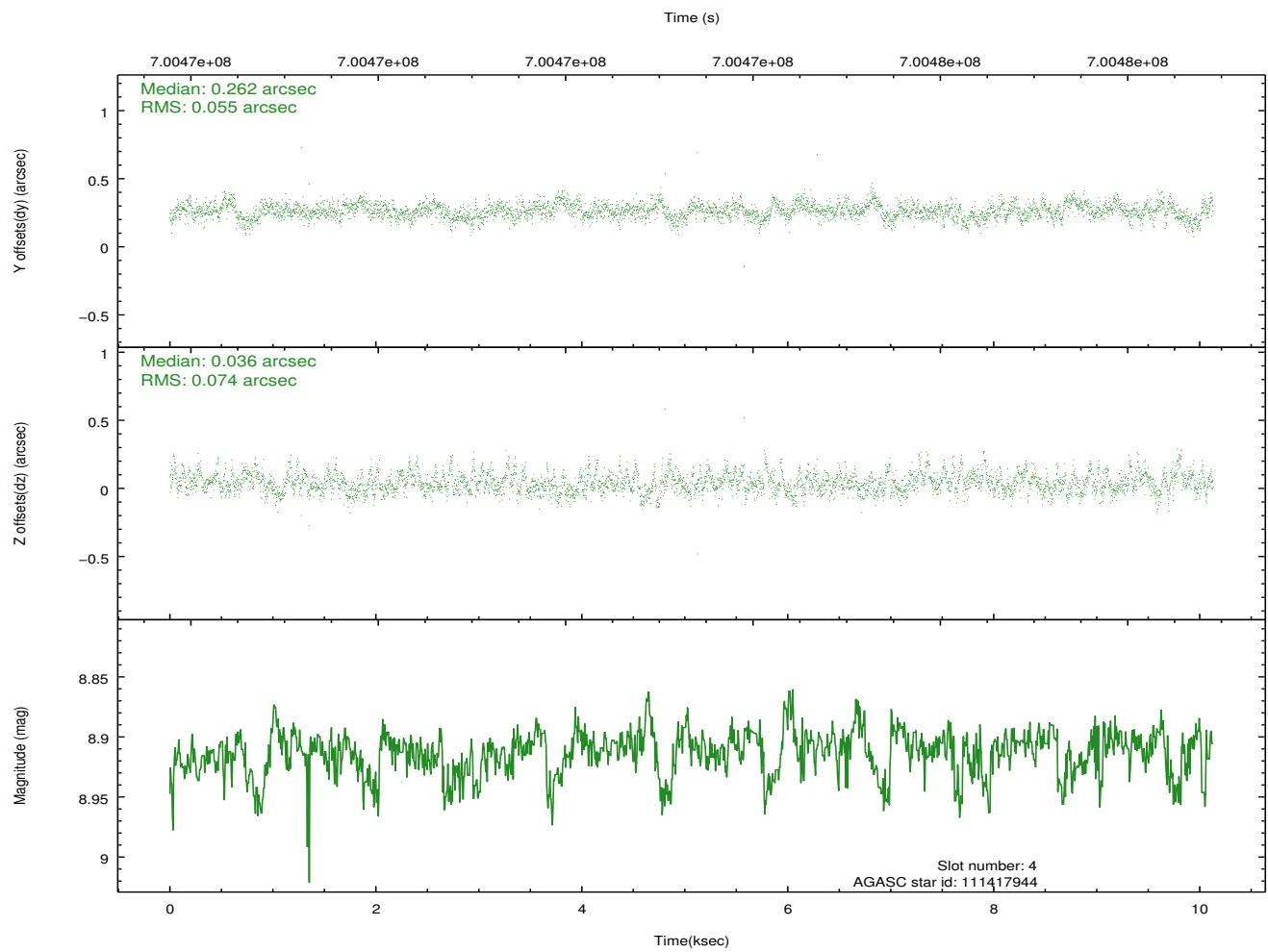
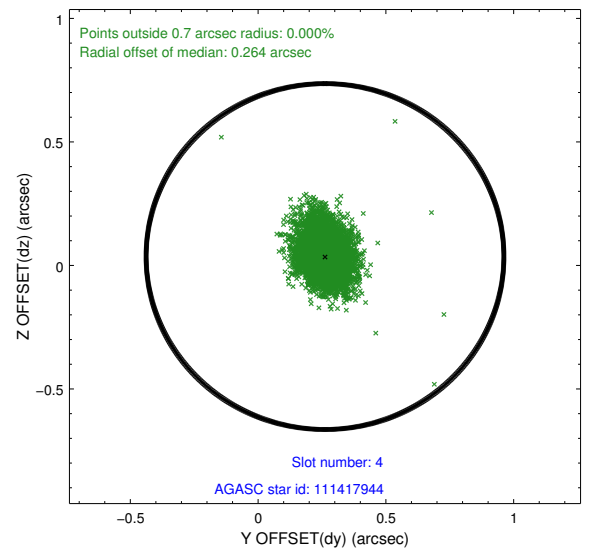
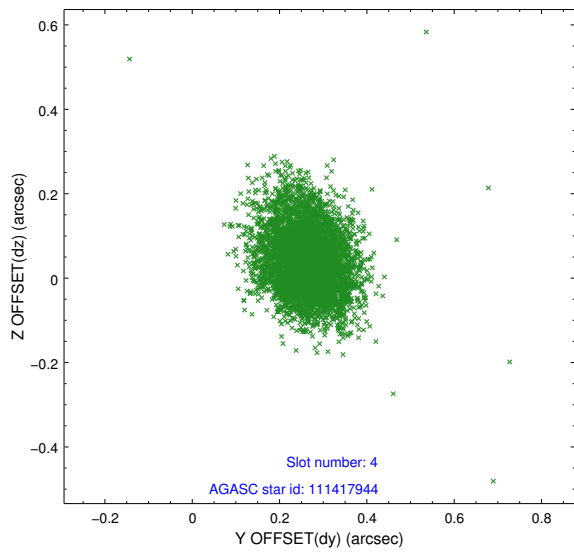
∞

2.4 Star Slots

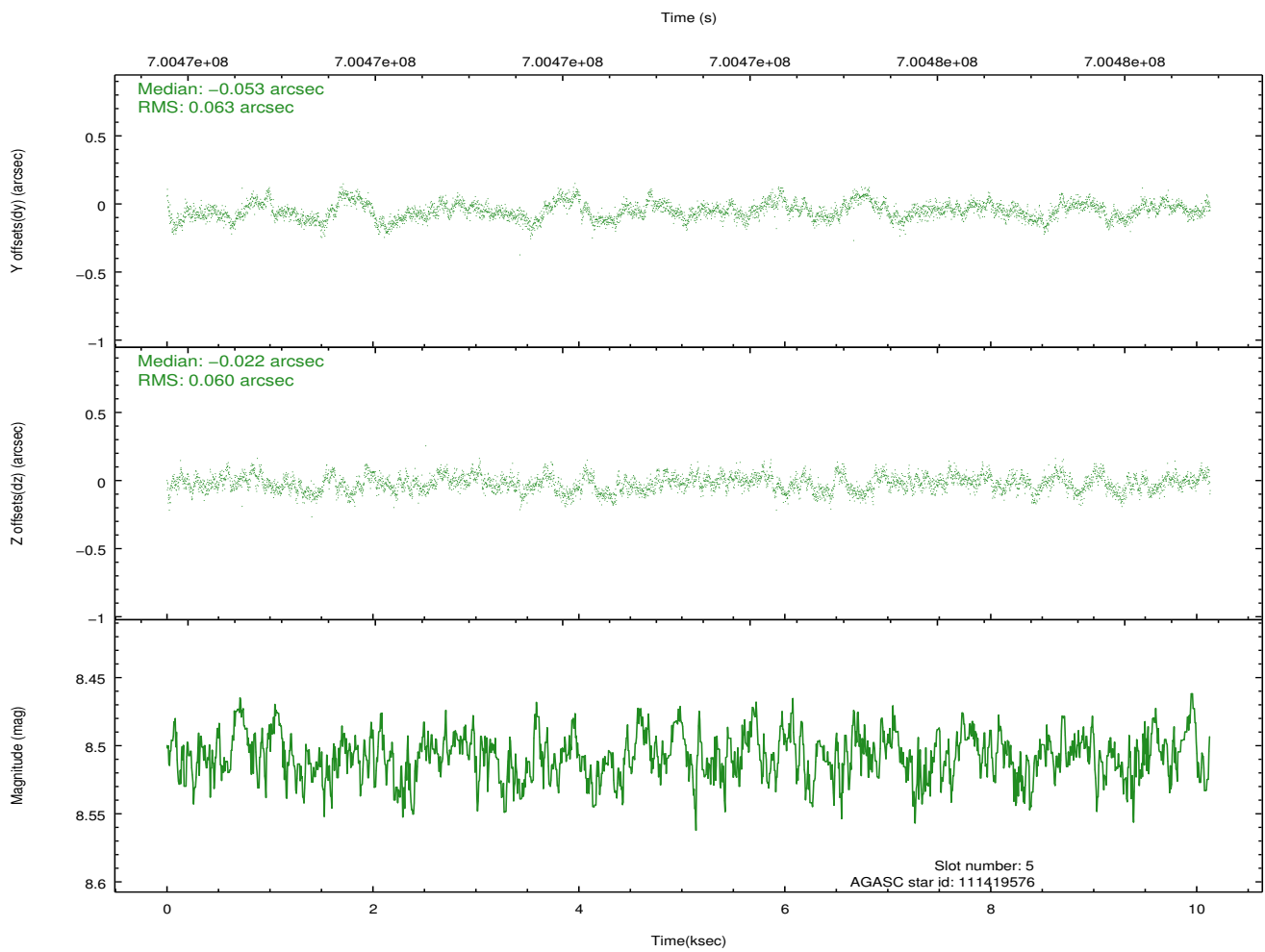
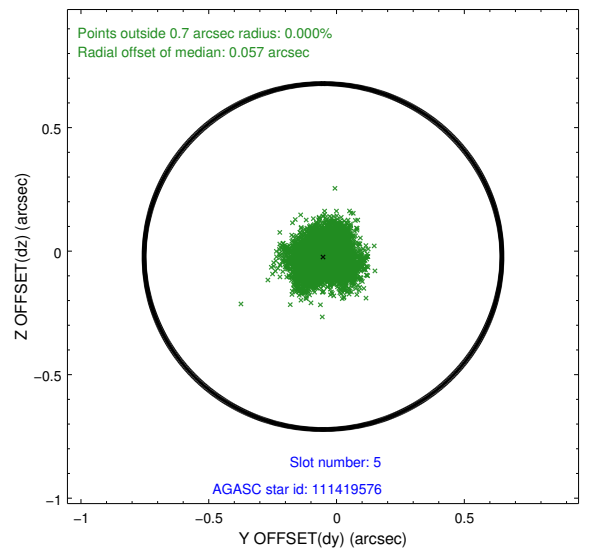
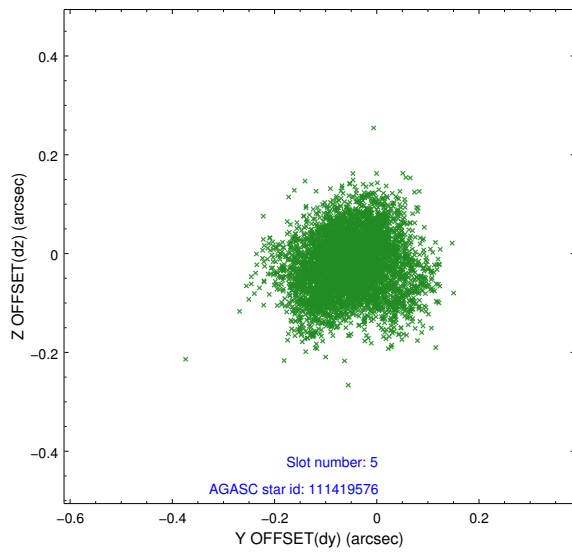
2.4.1 Slot 3



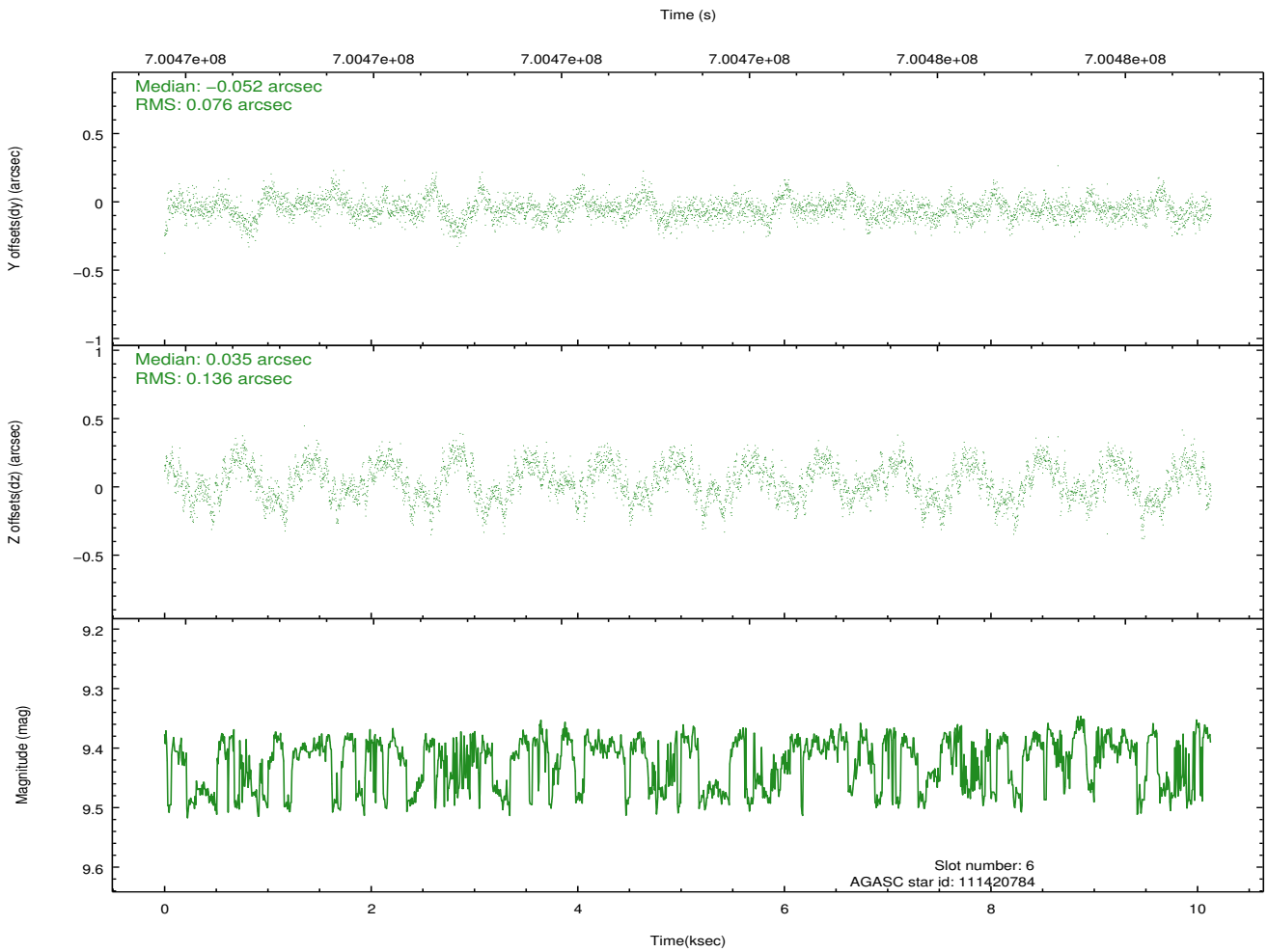
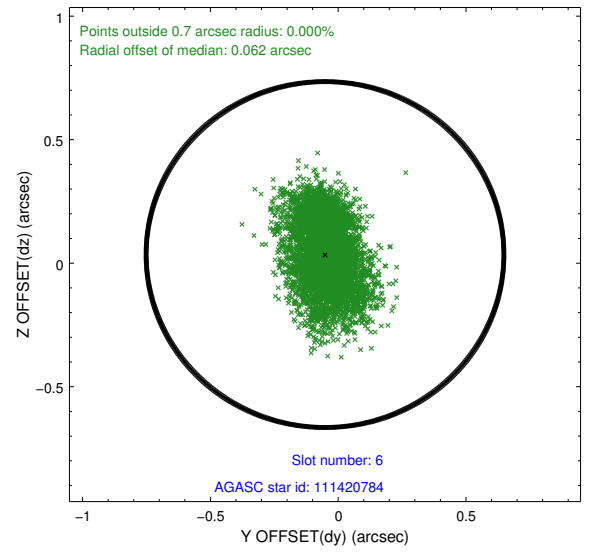
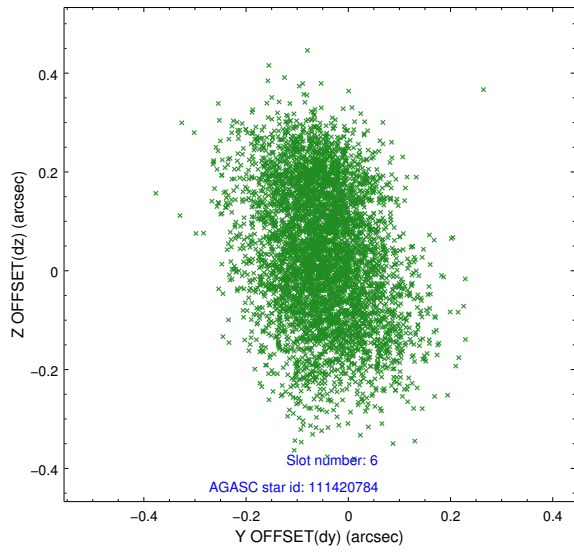
2.4.2 Slot 4



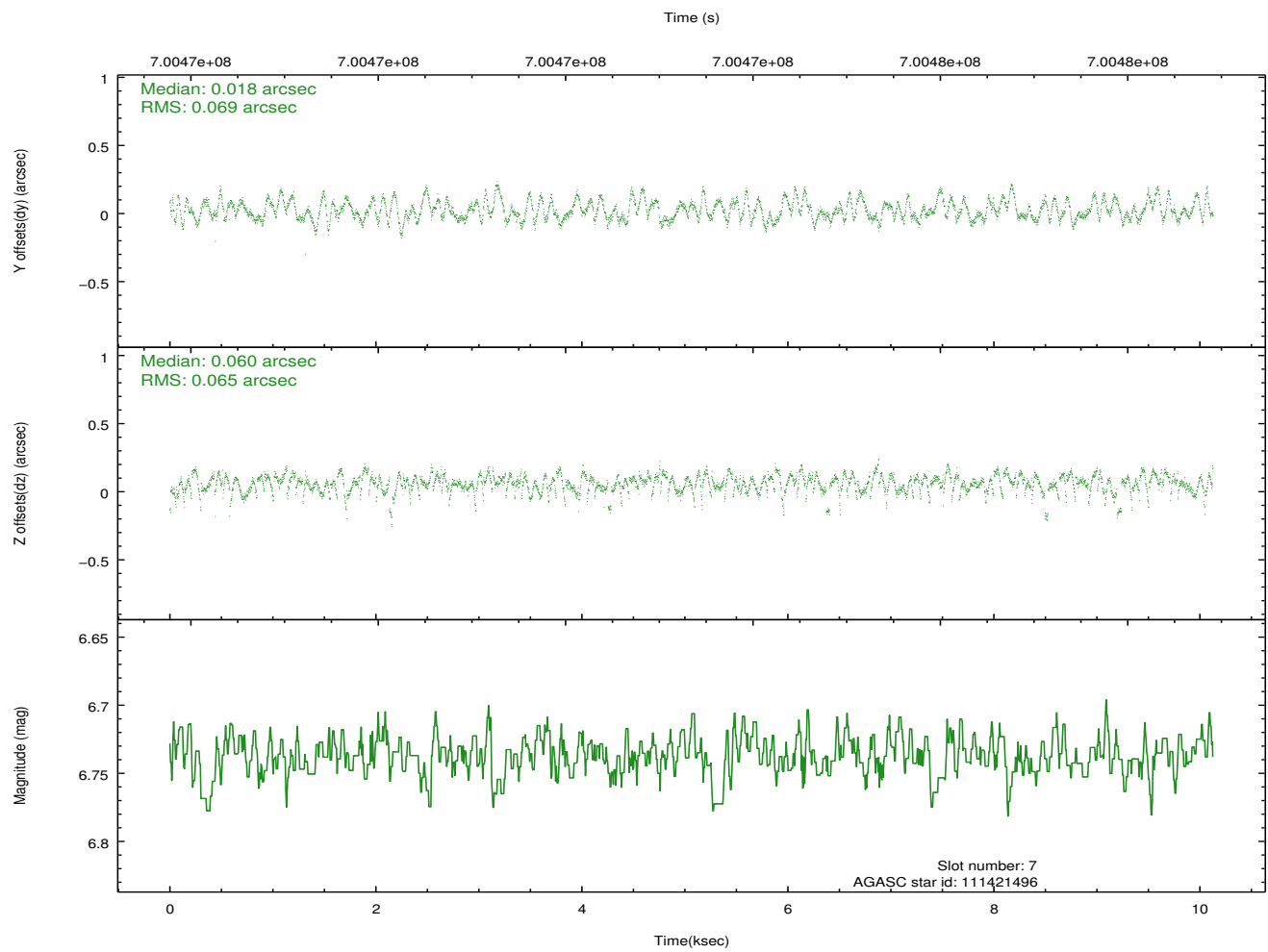
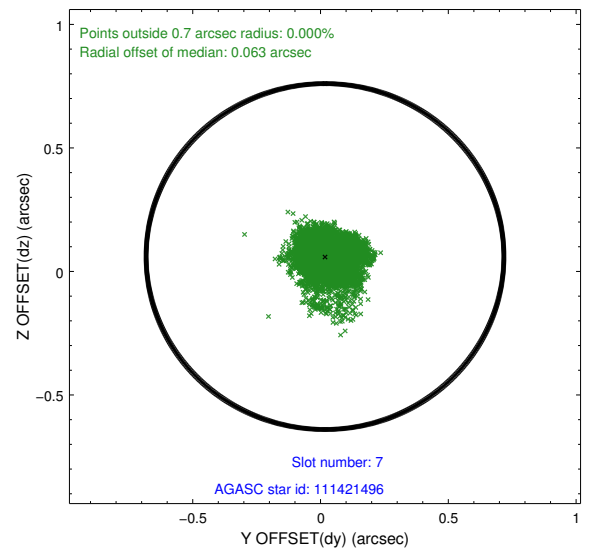
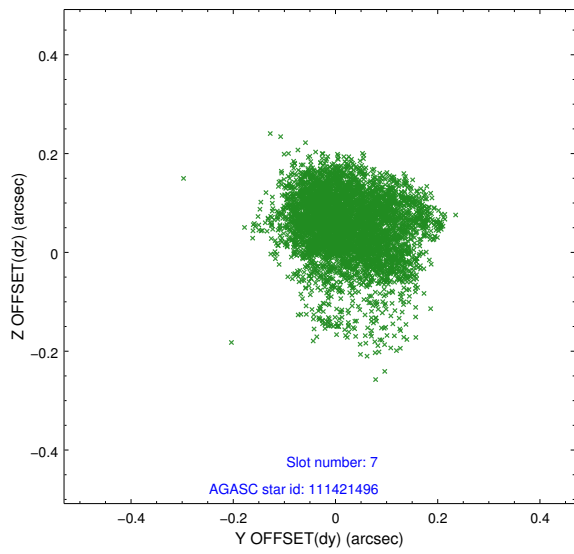
2.4.3 Slot 5



2.4.4 Slot 6

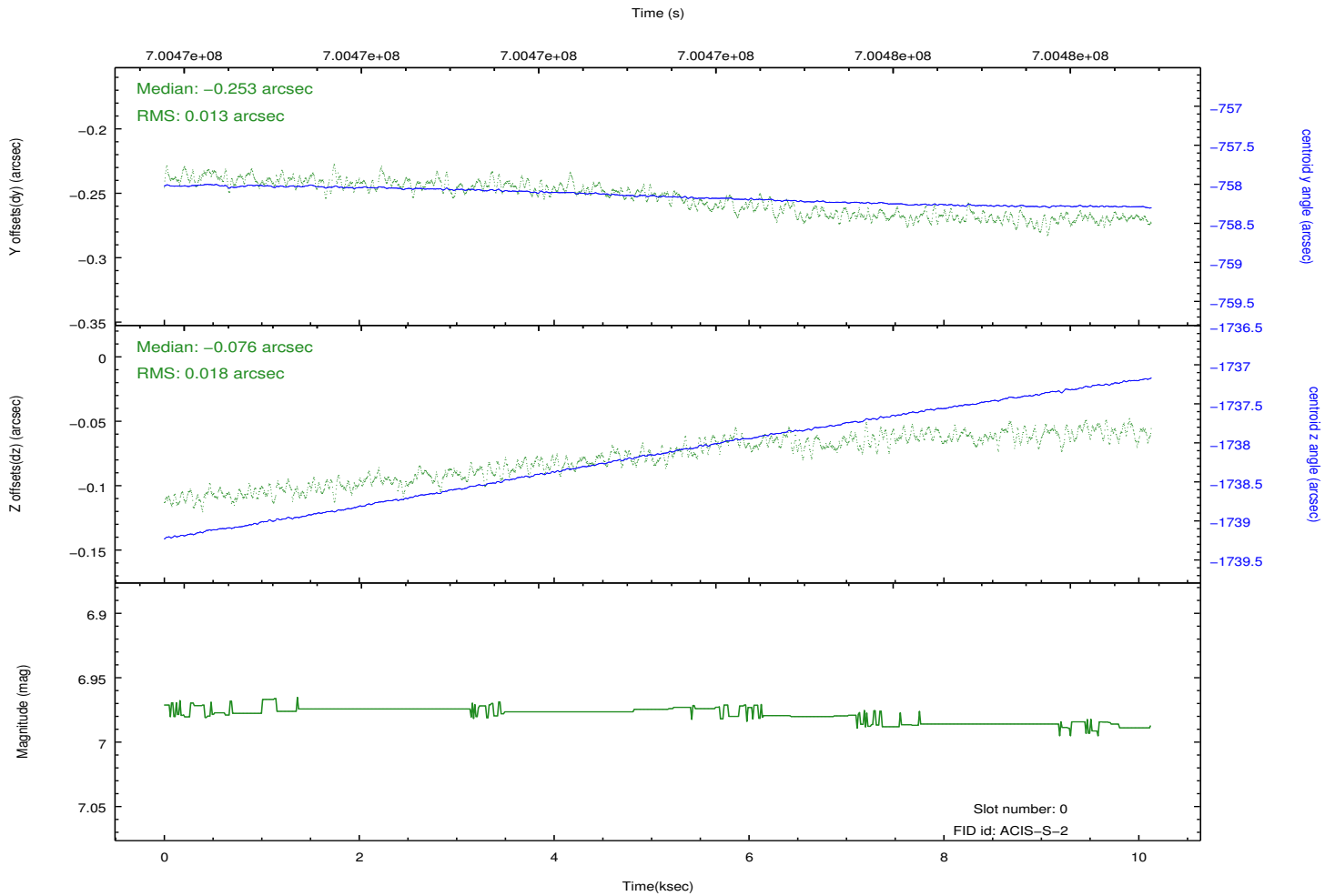
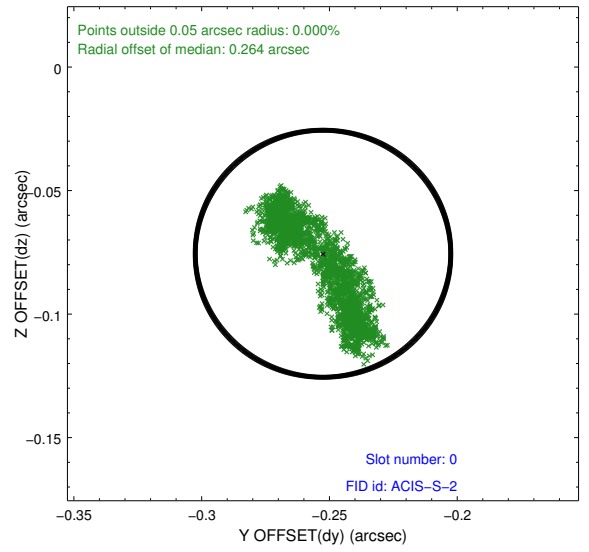
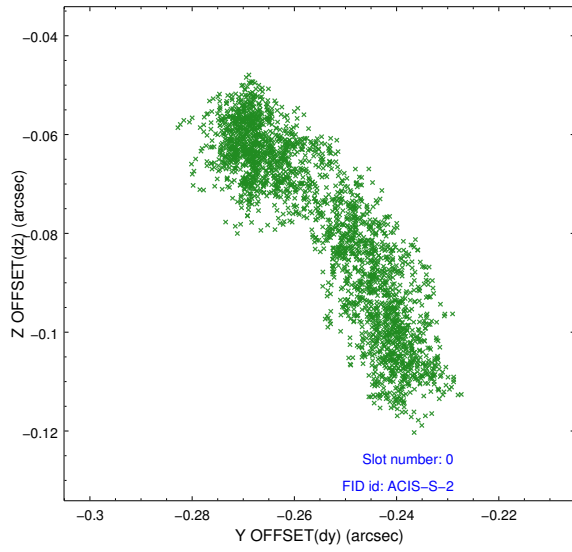


2.4.5 Slot 7

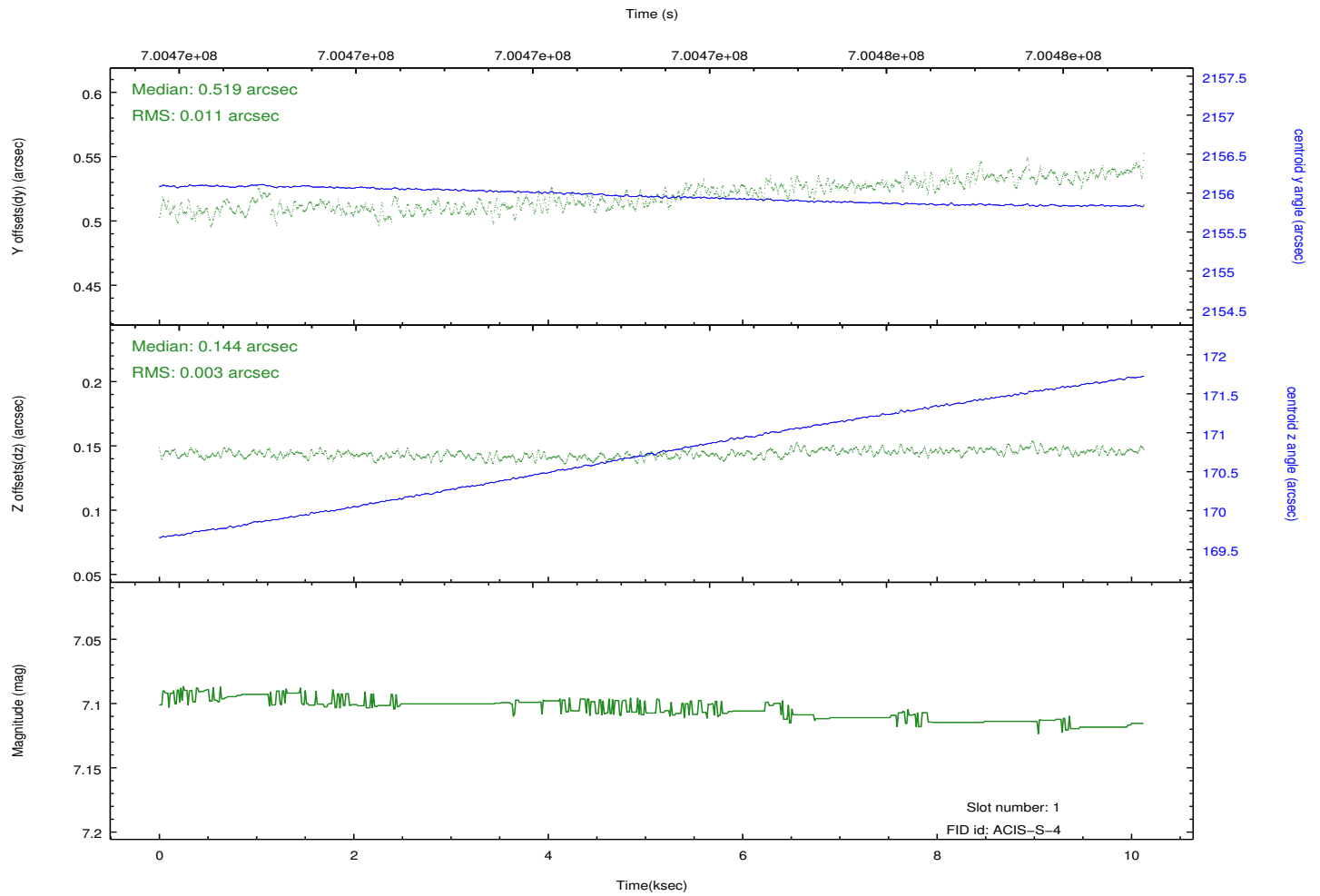
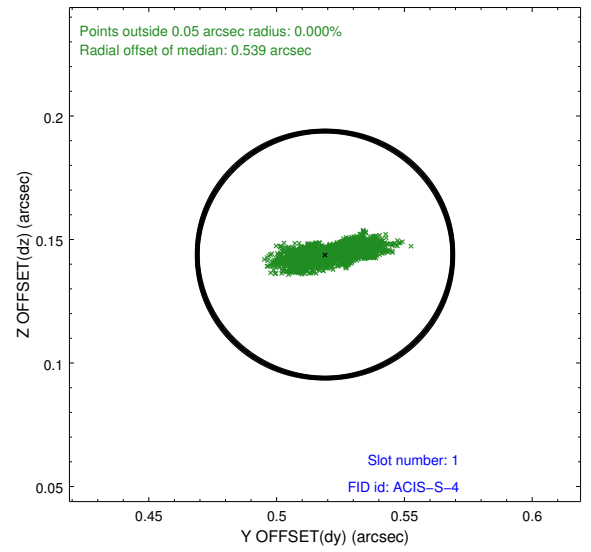
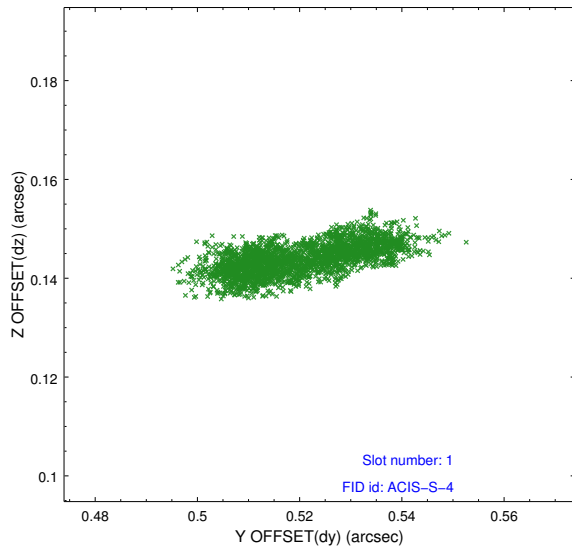


2.5 FID Slots

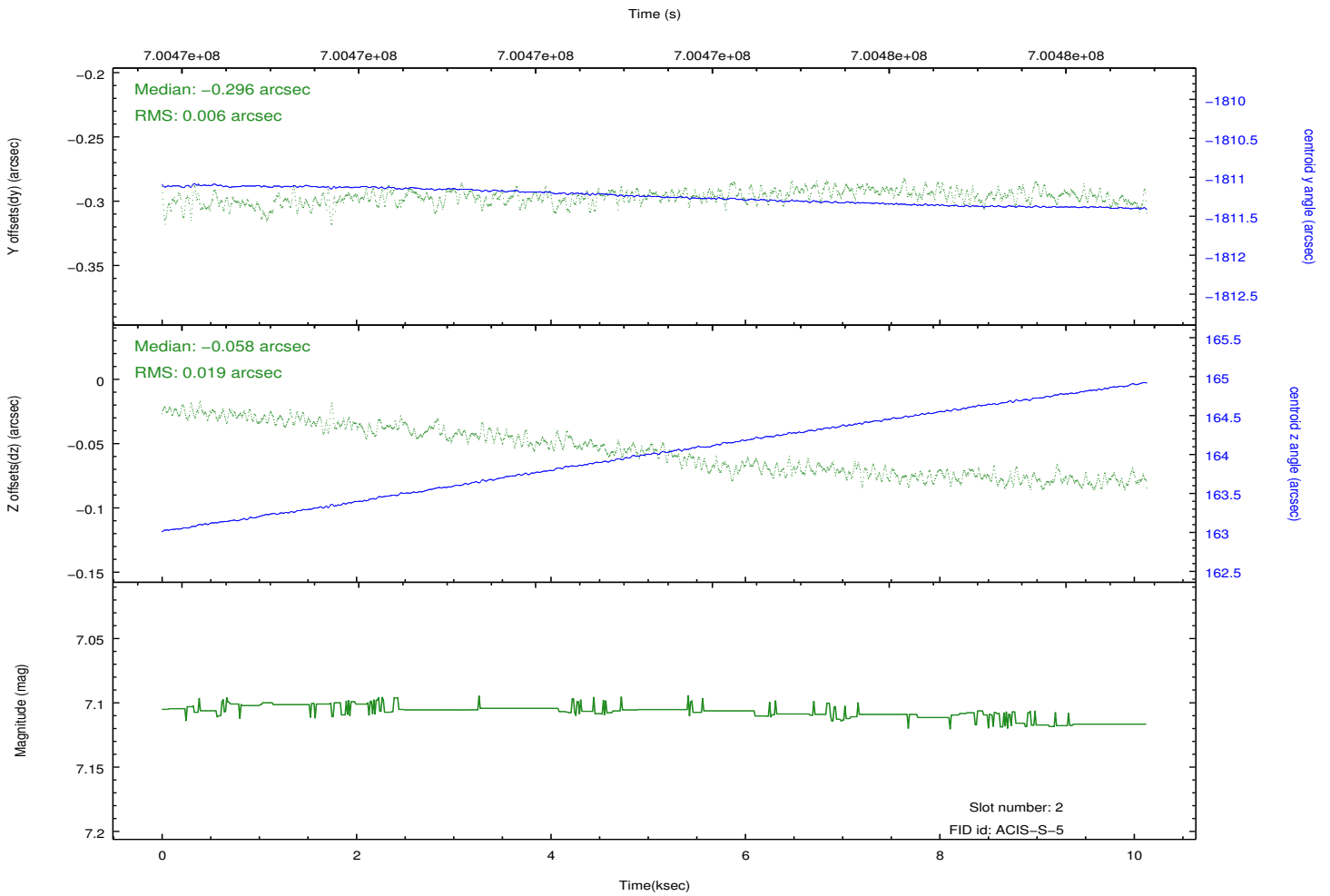
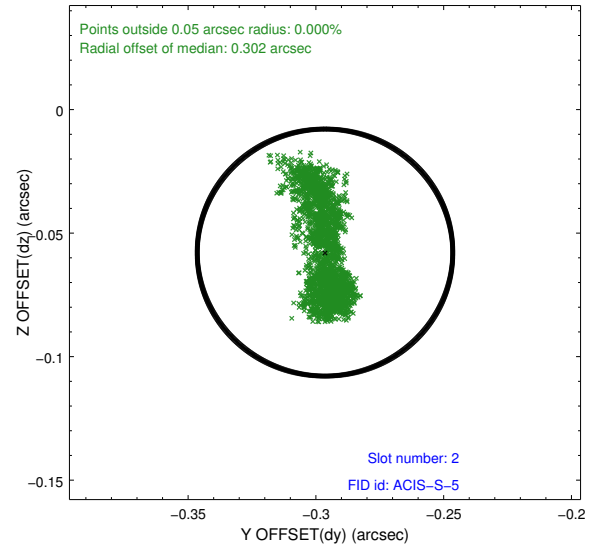
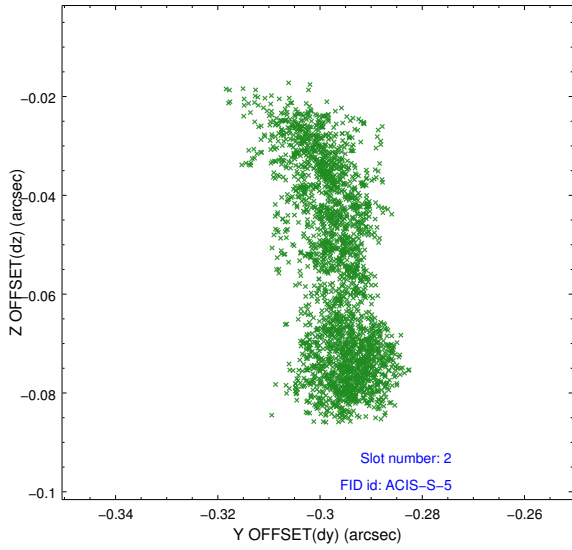
2.5.1 Slot 0



2.5.2 Slot 1



2.5.3 Slot 2



A Summary

A.1 Status

V&V Scientist	Beth Sundheim
V&V Date (YYYY-MM-DD)	2020.03.13
V&V Edition	1
V&V Disposition and Status	OK
V&V Charge Time	10.06079940033

A.2 Comments