

V&V Reference Report

L2 ASCDS Version : 8.1.1

Observation 100 - L2 Version 4
Chandra X-Ray Center

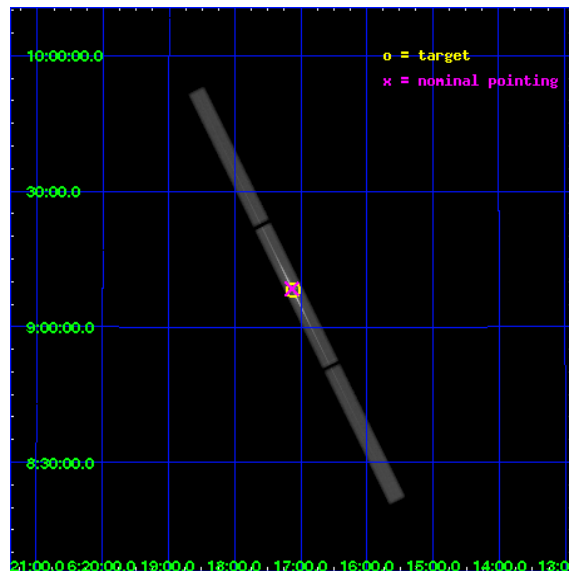
L2 Processing Date : Nov 25 2009

Contents

1	Front	2
2	OBI	3
2.1	OBI	3
2.1.1	Images	3
2.1.2	Parameters	4
2.1.3	Events	4
2.2	Compared Parameters	5
2.3	Aspect	6
2.4	Star Slots	9
2.4.1	Slot 3	9
2.4.2	Slot 4	10
2.4.3	Slot 5	11
2.4.4	Slot 6	12
2.4.5	Slot 7	13
2.5	FID Slots	14
2.5.1	Slot 0	14
2.5.2	Slot 1	15
2.5.3	Slot 2	16
3	Gratings	17
3.1	LETG Arm	17
A	Summary	19
A.1	Status	19
A.2	Comments	19

1 Front

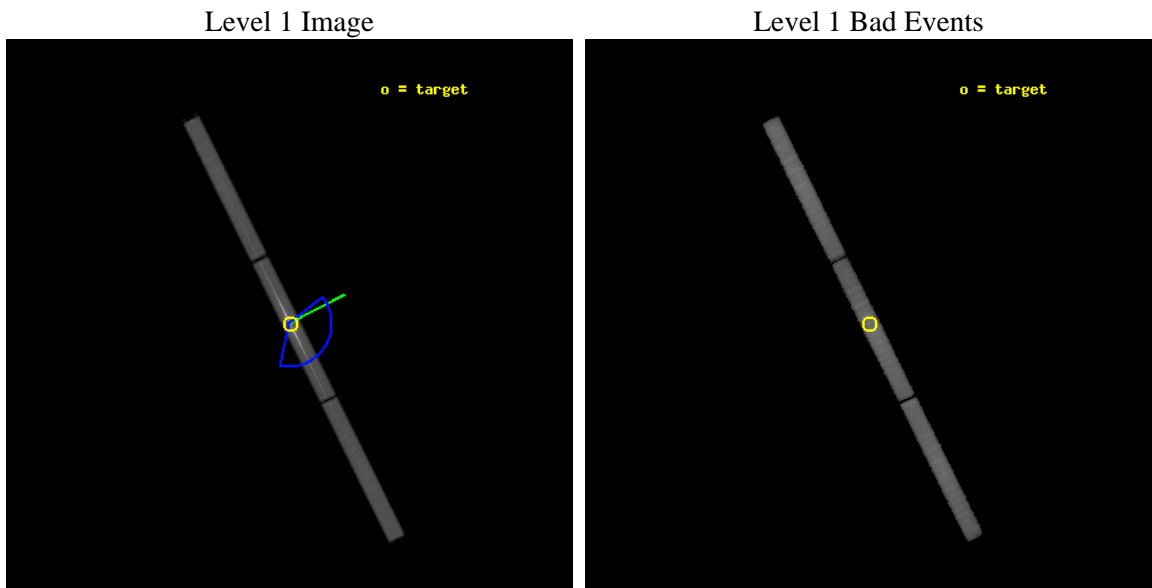
seq_num	400013	Sequence number
obs_id	100	Observation id
title	OBSERVATIONS OF ACTIVE, COMPACT, LOW-MASS X-RAY BINARIES WITH LETGS	
observer	DR. ALBERT BRINKMAN	Principal investigator
object	X0614+091	Source name
ra_targ	94.280833	Observer's specified target RA
dec_targ	9.136667	Observer's specified target Dec
ra_nom	94.28357739023	Nominal RA
dec_nom	9.1412000573964	Nominal Dec
roll_nom	63.512780224455	Nominal Roll
revision	4	Processing version of data
ontime	26275.107199661	[s]
livetime	26040.437564193	Overtime multiplied by DTCOR
l2events	1955758	Number of level 2 events



2 OBI

2.1 OBI

2.1.1 Images



2.1.2 Parameters

obi_num	0	Obi number	sched_exp_time	26000.000000	Scheduled observation exposure time
ascdsver	8.1.1	Processing system revision	ontime	26275.107199661	[s]
caldbver	4.1.4	 	ll events	2715016	Number of level 1 events
date	2009-11-25T09:32:41	Date and time of file creation			
revision	4	Processing version of data			

2.1.3 Events

Level 1 Events

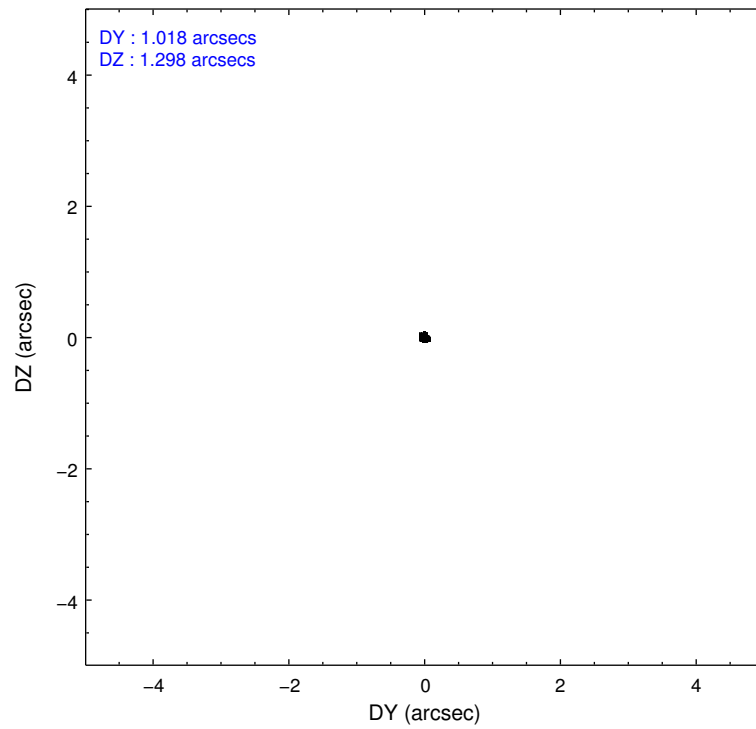
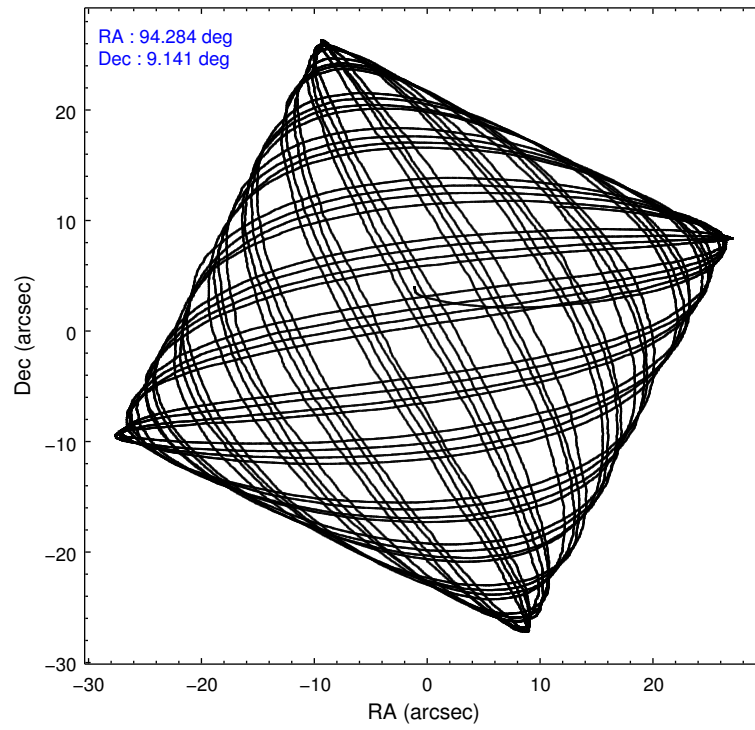
	segment 1	segment 2	segment 3
level 1 events	671355	1364871	678790
rejected events	174791	188929	212851
rejected %	26%	13%	31%

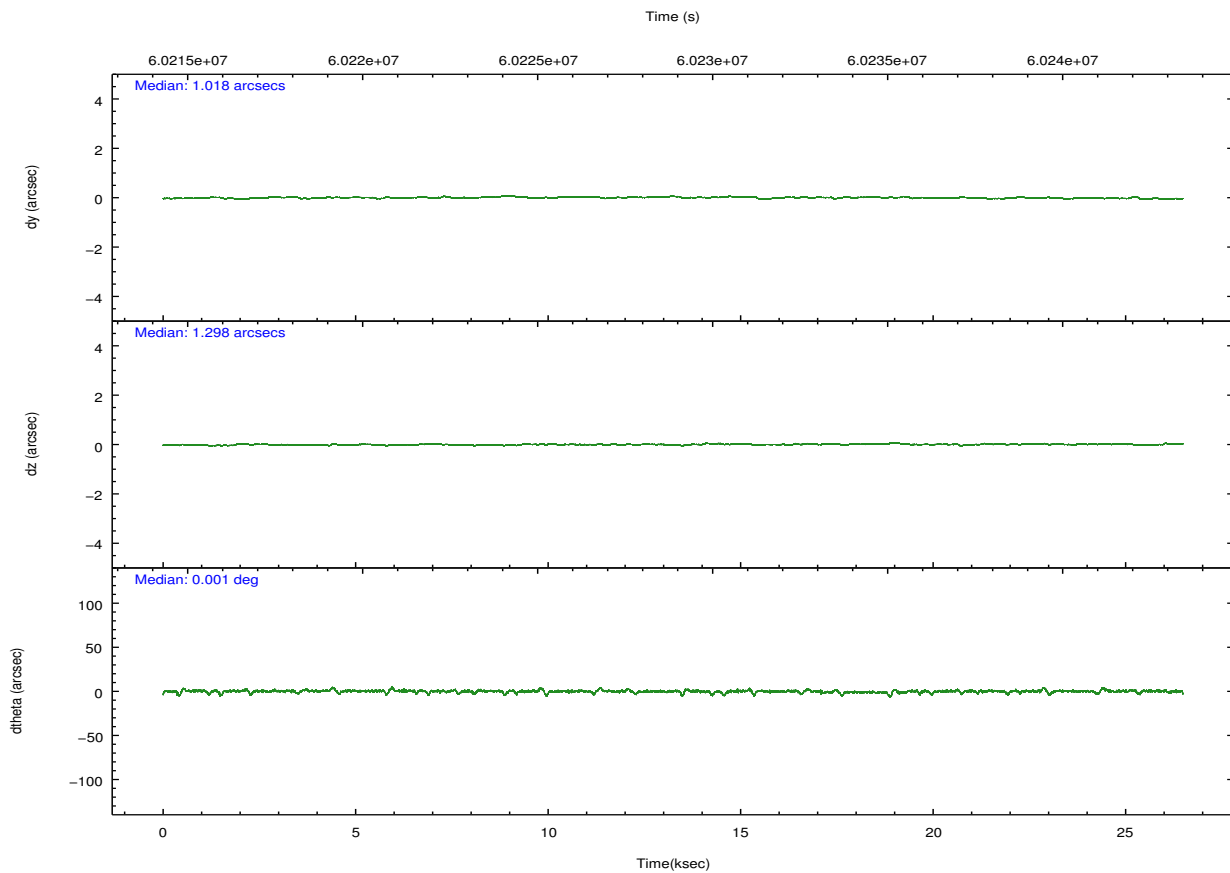
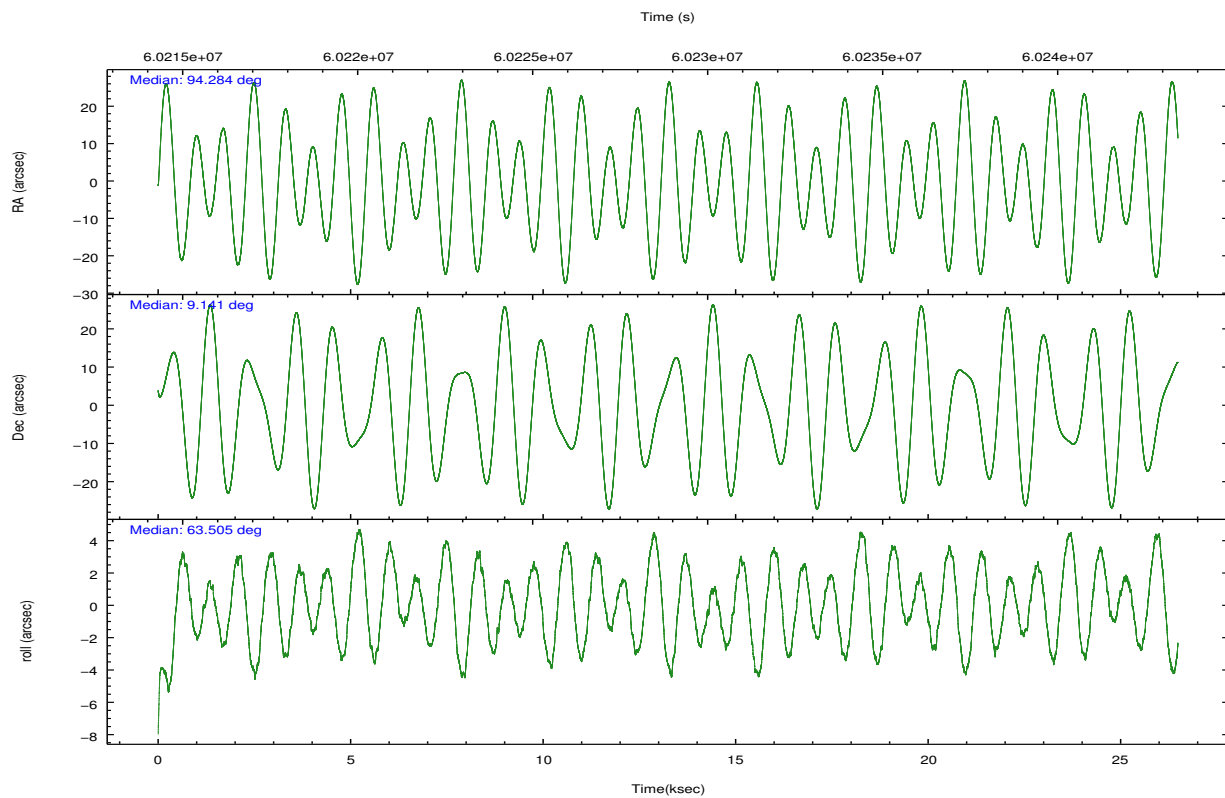
2.2 Compared Parameters

Parameter	Planned	Actual
Instrument	HRC	HRC
Detector	HRC-S	HRC-S
Grating	LETG	LETG
Data mode	OBSERVING	OBSERVING
Observation mode	POINTING	POINTING
Pointing RA	94.286276	94.28357739023049
Pointing Dec	9.112372	9.141200057396432
Pointing Roll	63.445016	63.51278022445469
Roll angle	122.000000	122.000000
Roll tolerance	70.000000	70.000000
Roll constraint allows 180D rotation	N	N
SIM focus pos (mm)	-1.429586	-1.428180813131781
SIM defocus (mm)	0.1037507710433287	0.1051558262725154
SIM translation stage pos (mm)	250.455976	250.466033080201
SIM translation stage offset (mm)	0	-0.01005468664627074
Observation start time	60216112.184000	60215167.006957
Observation start date	1999-11-28T22:40:48	1999-11-28T22:26:07
Observation end time	60242112.184000	60242557.057947
Observation end date	1999-11-29T05:54:08	1999-11-29T06:02:37

Parameter	Planned	Actual
Obspar format version number	6	6
Obspar file type	PREDICTED	ACTUAL
Obspar update status	NONE	UPDATED

2.3 Aspect



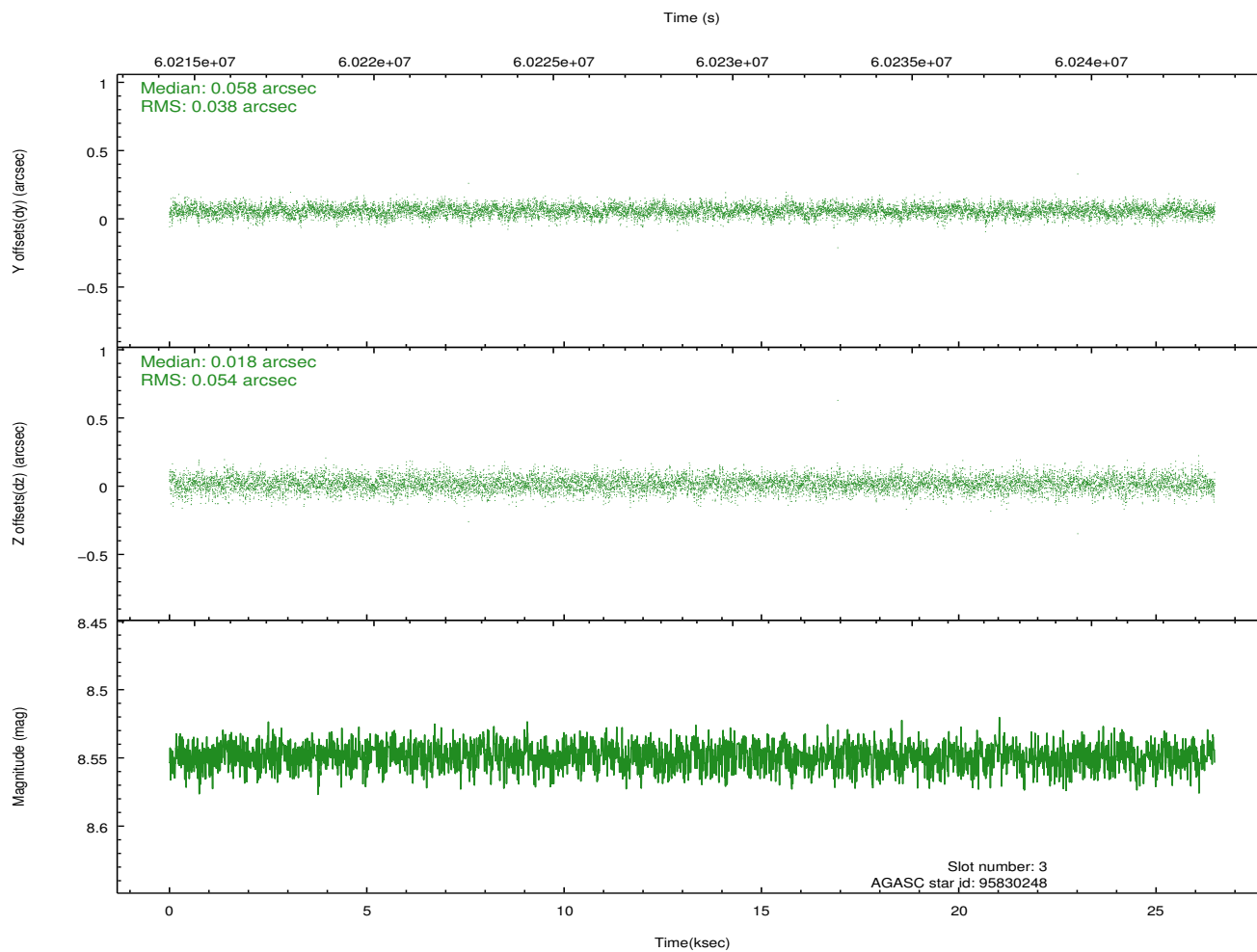
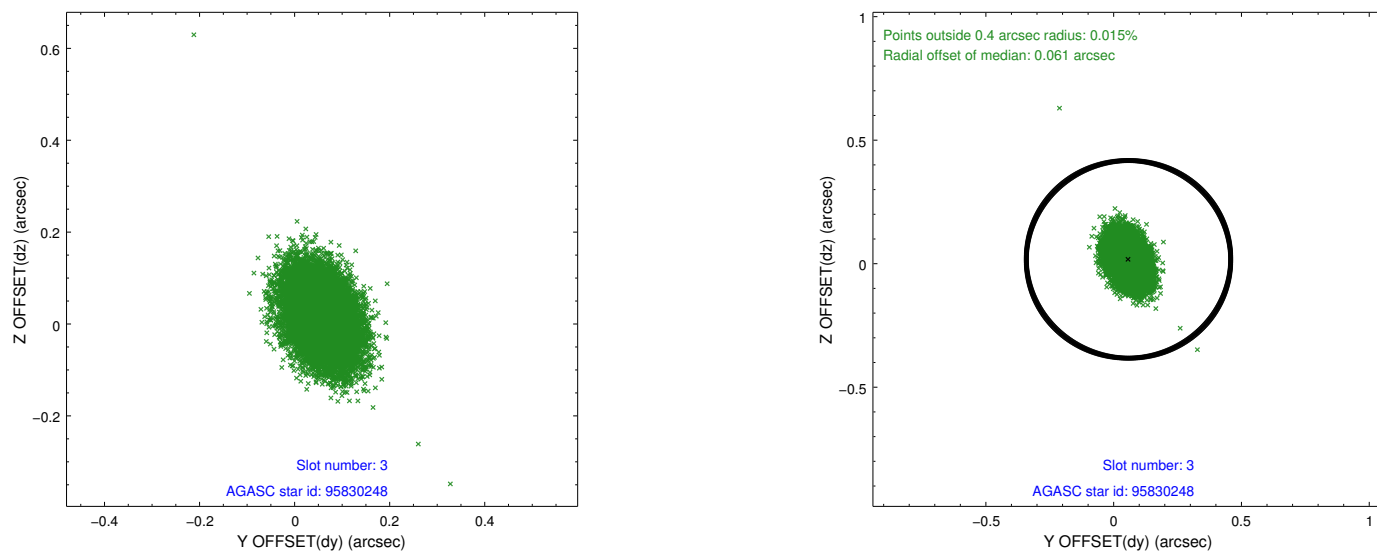


Slot Statistics

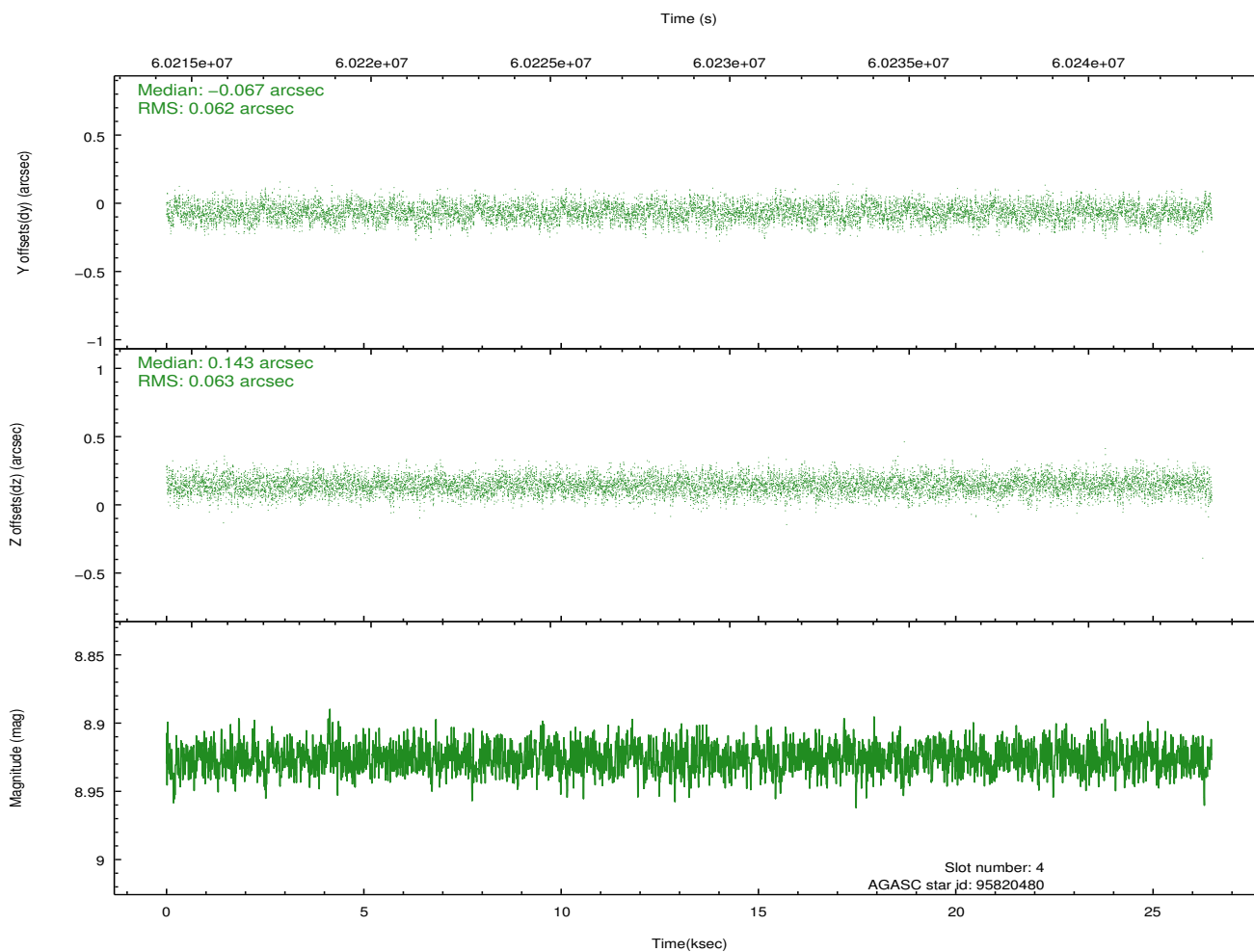
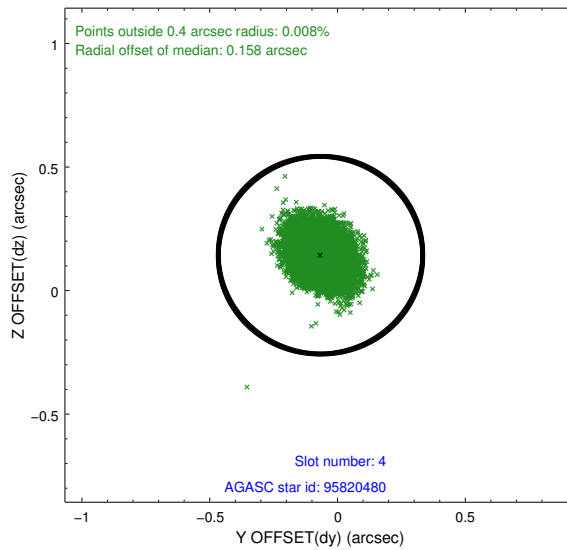
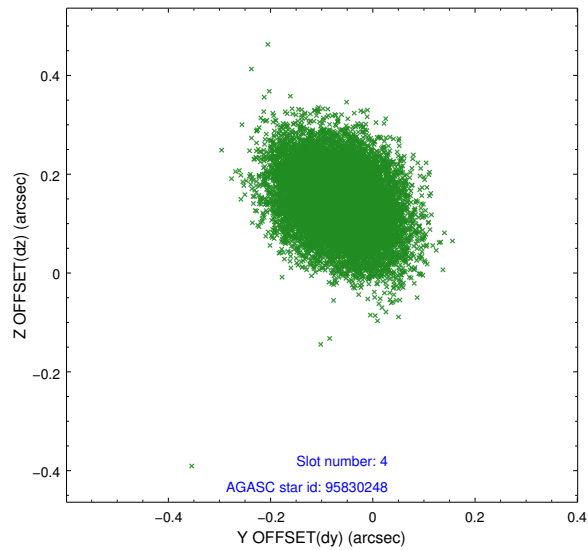
slot	status	id	mag	n_pts	med_dy	med_dz	dr1	dr2	ra	dec	mean_y	mean_z
0	FID	HRC-S-2	6.99	12922	0.151	-0.051	0.012	0.039	0.000000	0.000000	1244.64	-442.33
1	FID	HRC-S-3	7.02	12921	0.104	-0.091	0.008	0.023	0.000000	0.000000	-1157.64	579.94
2	FID	HRC-S-4	6.99	12922	0.151	-0.153	0.015	0.046	0.000000	0.000000	1243.20	582.35
3	GUIDE	95830248	8.55	12918	0.058	0.018	0.069	0.117	94.398103	8.884651	-555.54	-721.72
4	GUIDE	95820480	8.93	12920	-0.067	0.143	0.094	0.152	94.877321	9.017875	636.63	-2030.32
5	GUIDE	95829000	8.95	12915	0.087	-0.047	0.077	0.125	93.957582	8.850705	-1365.06	625.20
6	GUIDE	95691008	9.34	12913	0.097	-0.068	0.093	0.149	93.825867	9.060495	-898.32	1381.56
7	GUIDE	96358472	9.48	12917	-0.178	-0.046	0.102	0.165	94.303866	9.776584	2166.20	1014.15

2.4 Star Slots

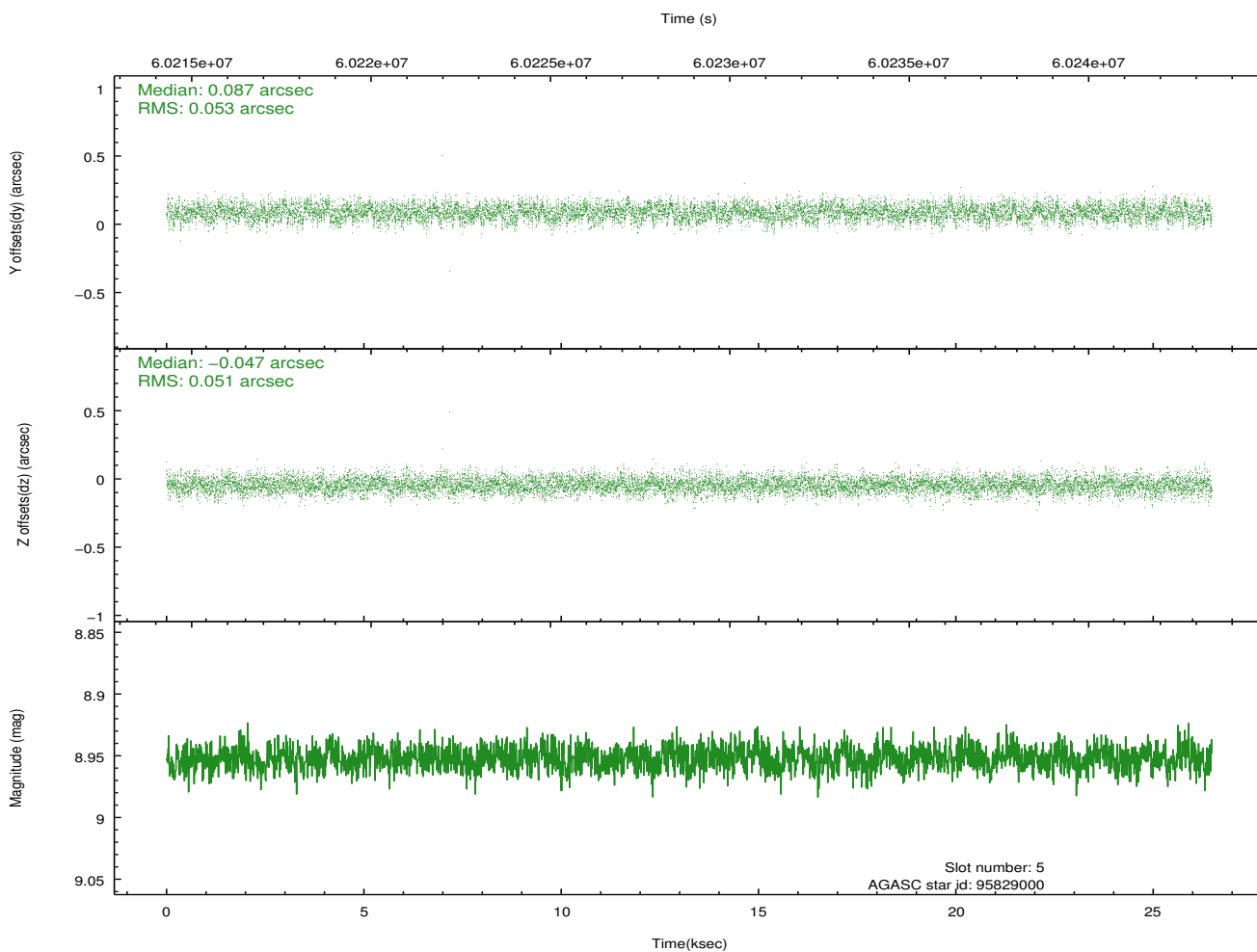
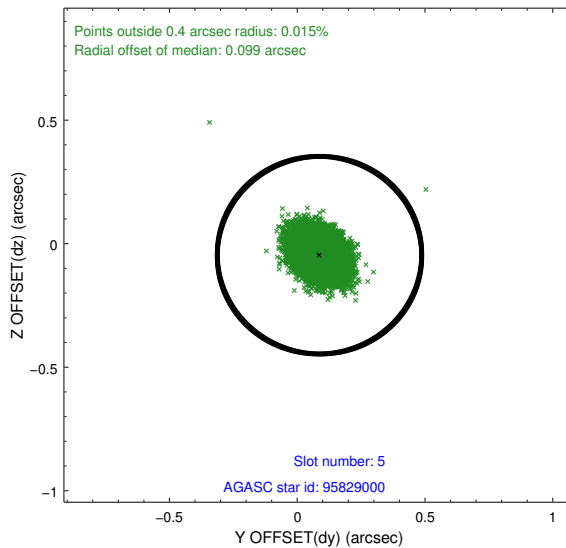
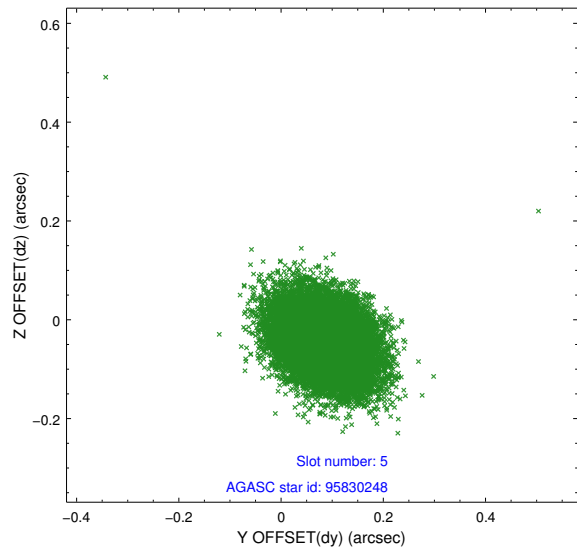
2.4.1 Slot 3



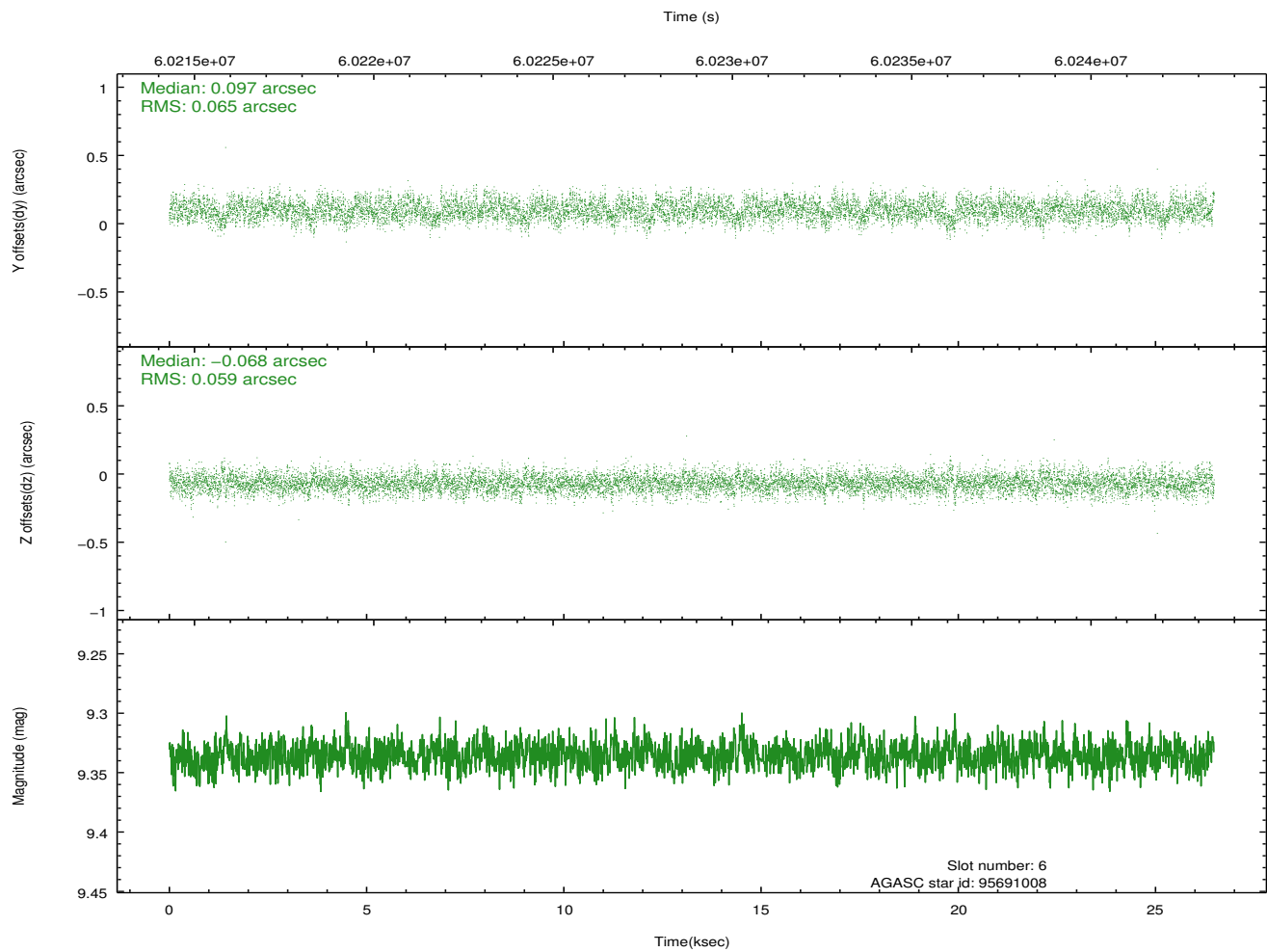
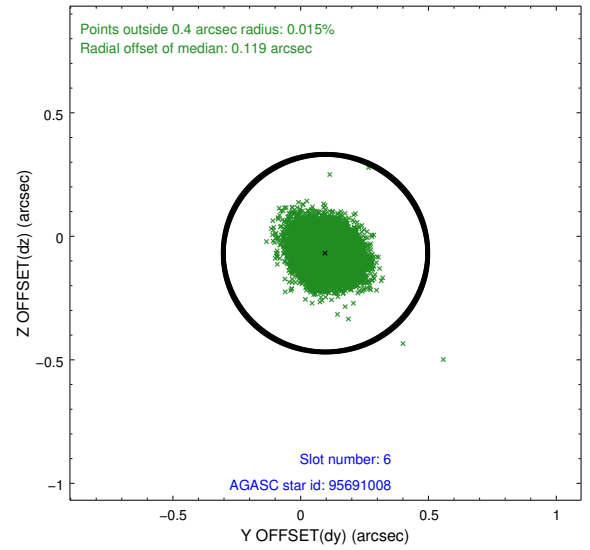
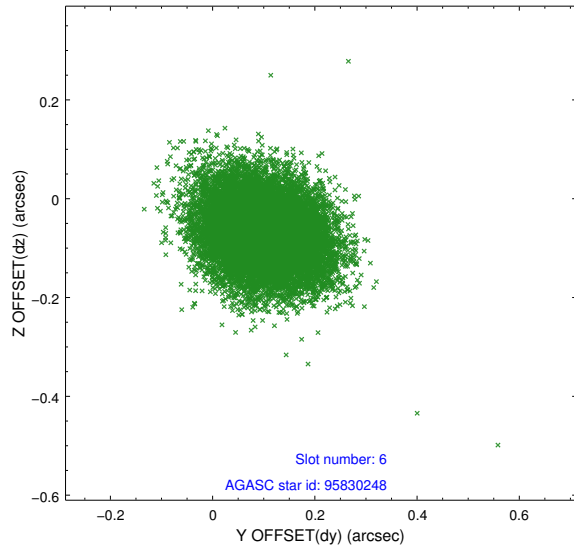
2.4.2 Slot 4



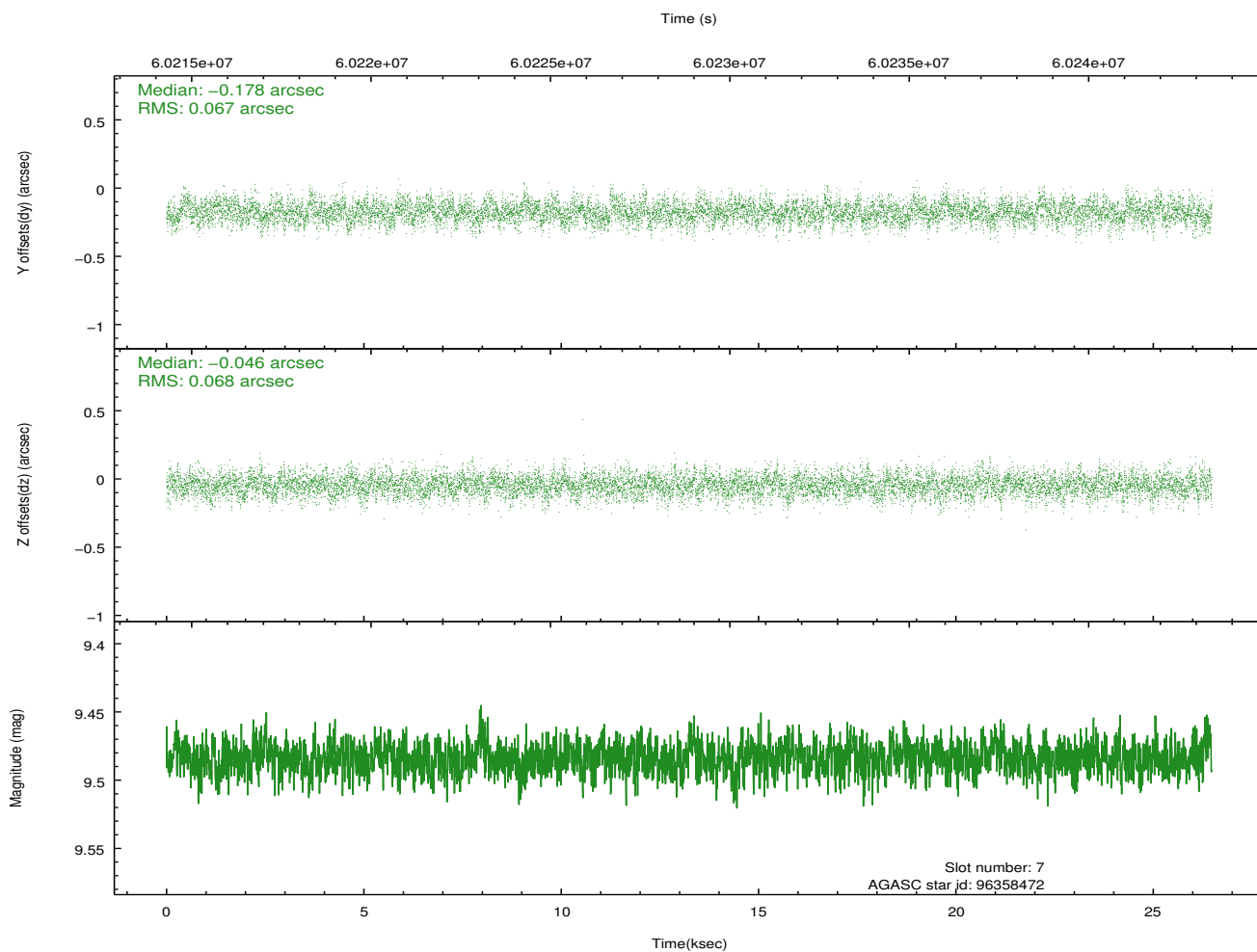
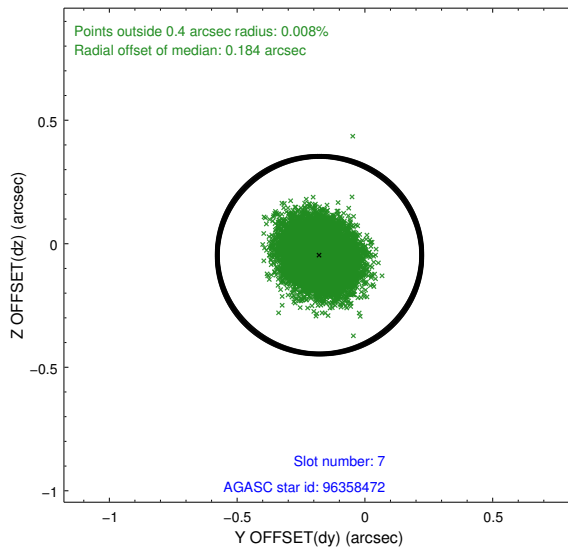
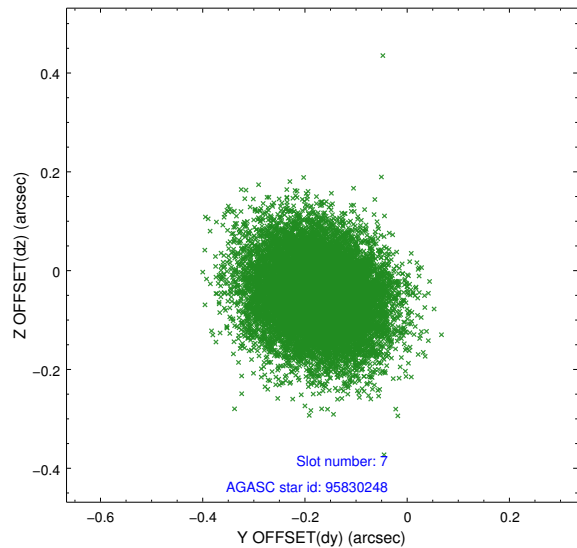
2.4.3 Slot 5



2.4.4 Slot 6

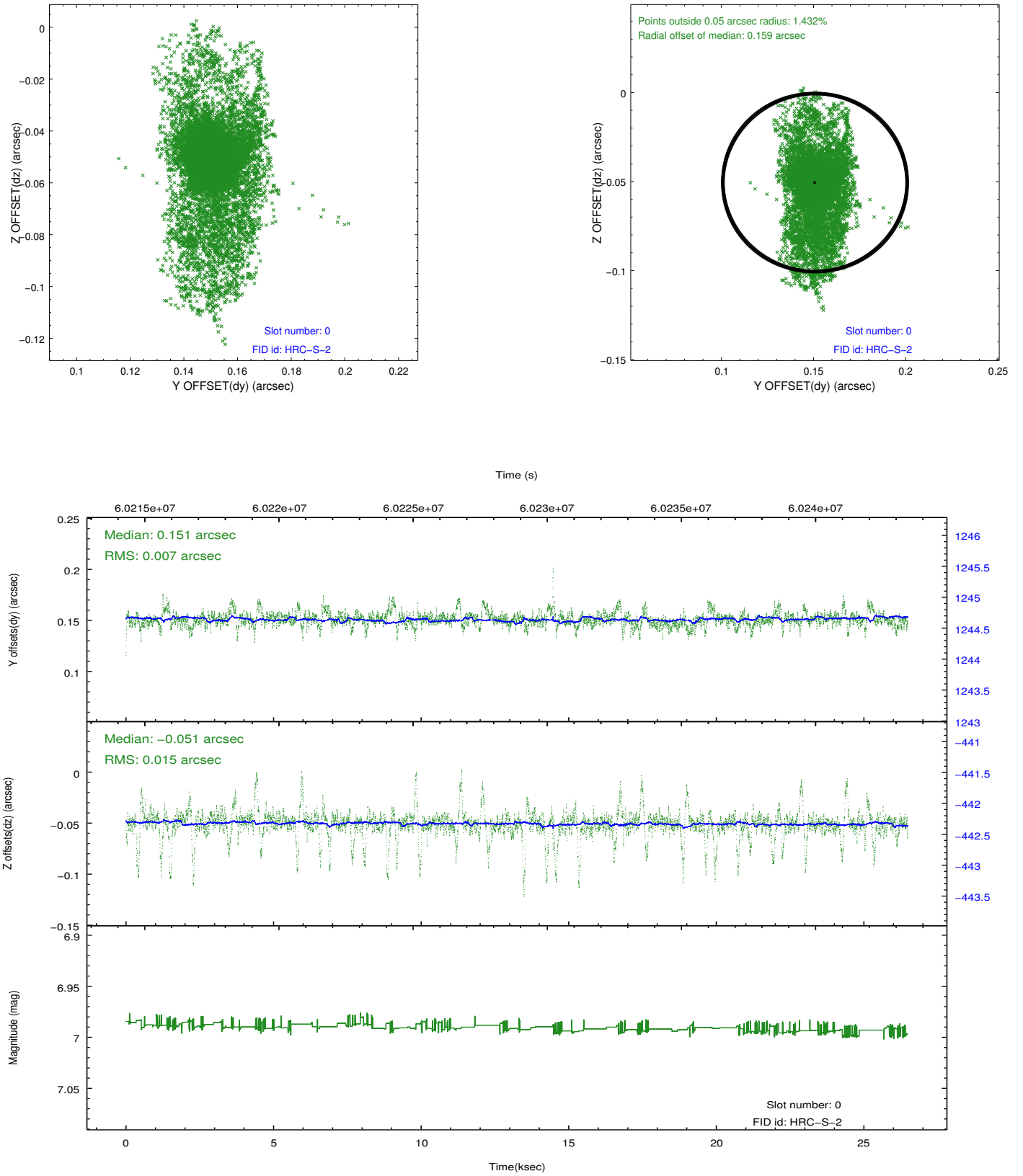


2.4.5 Slot 7

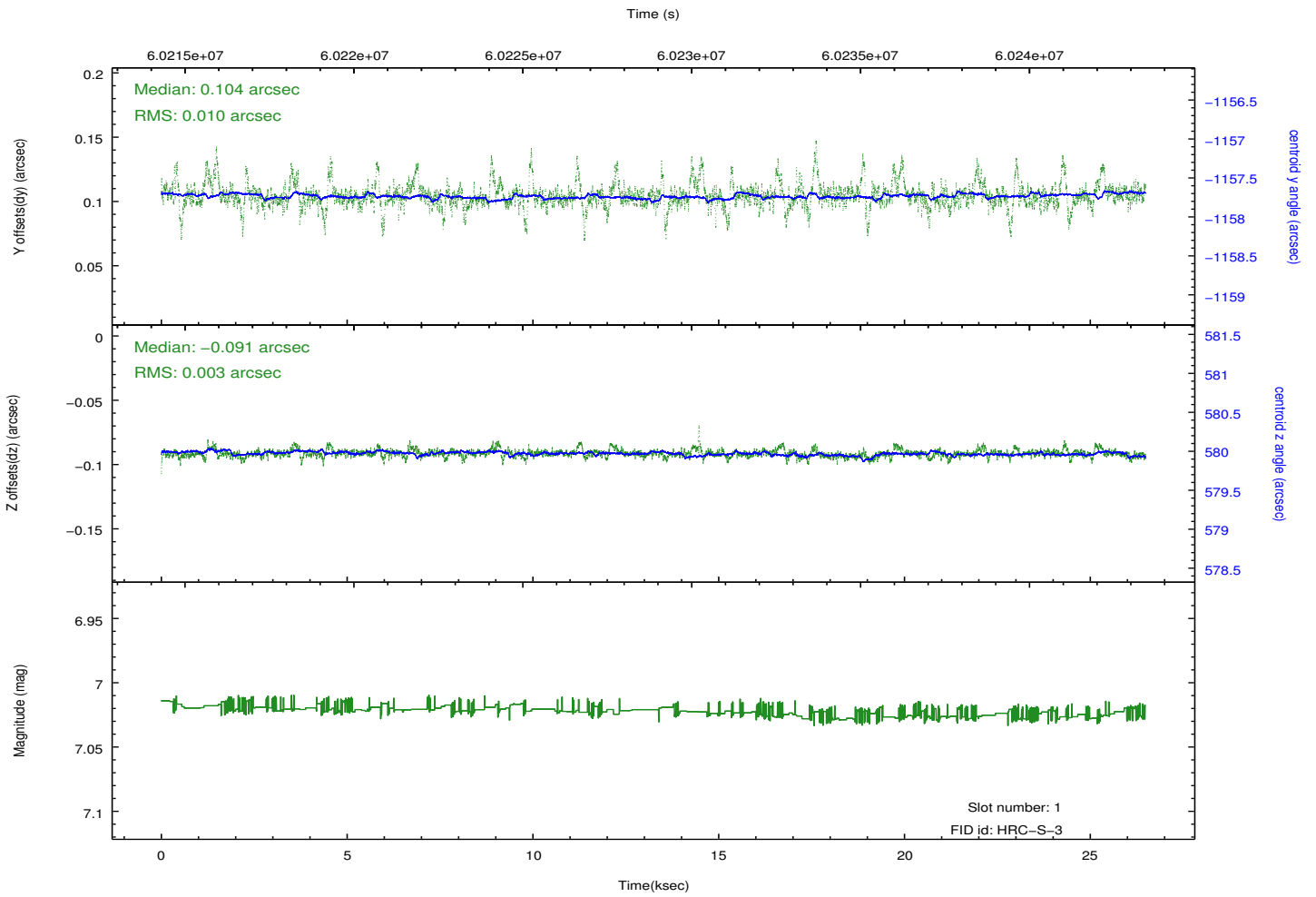
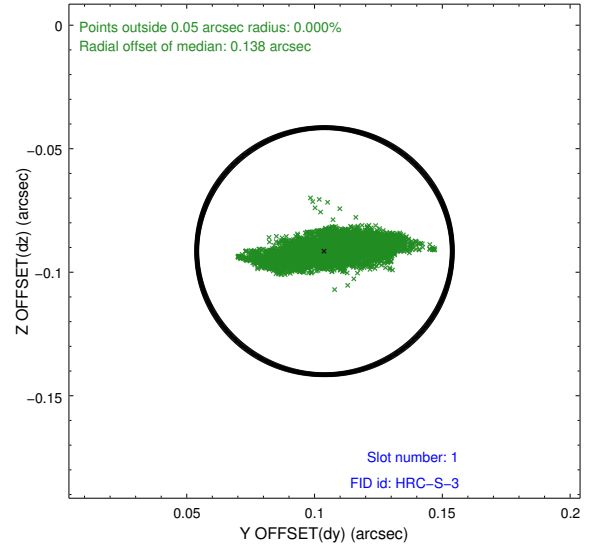
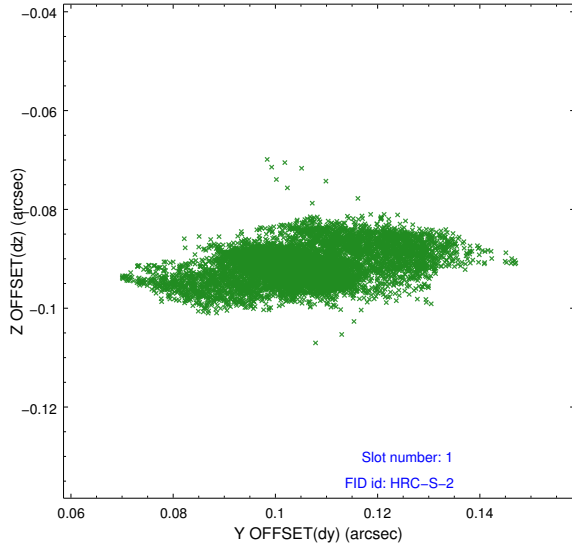


2.5 FID Slots

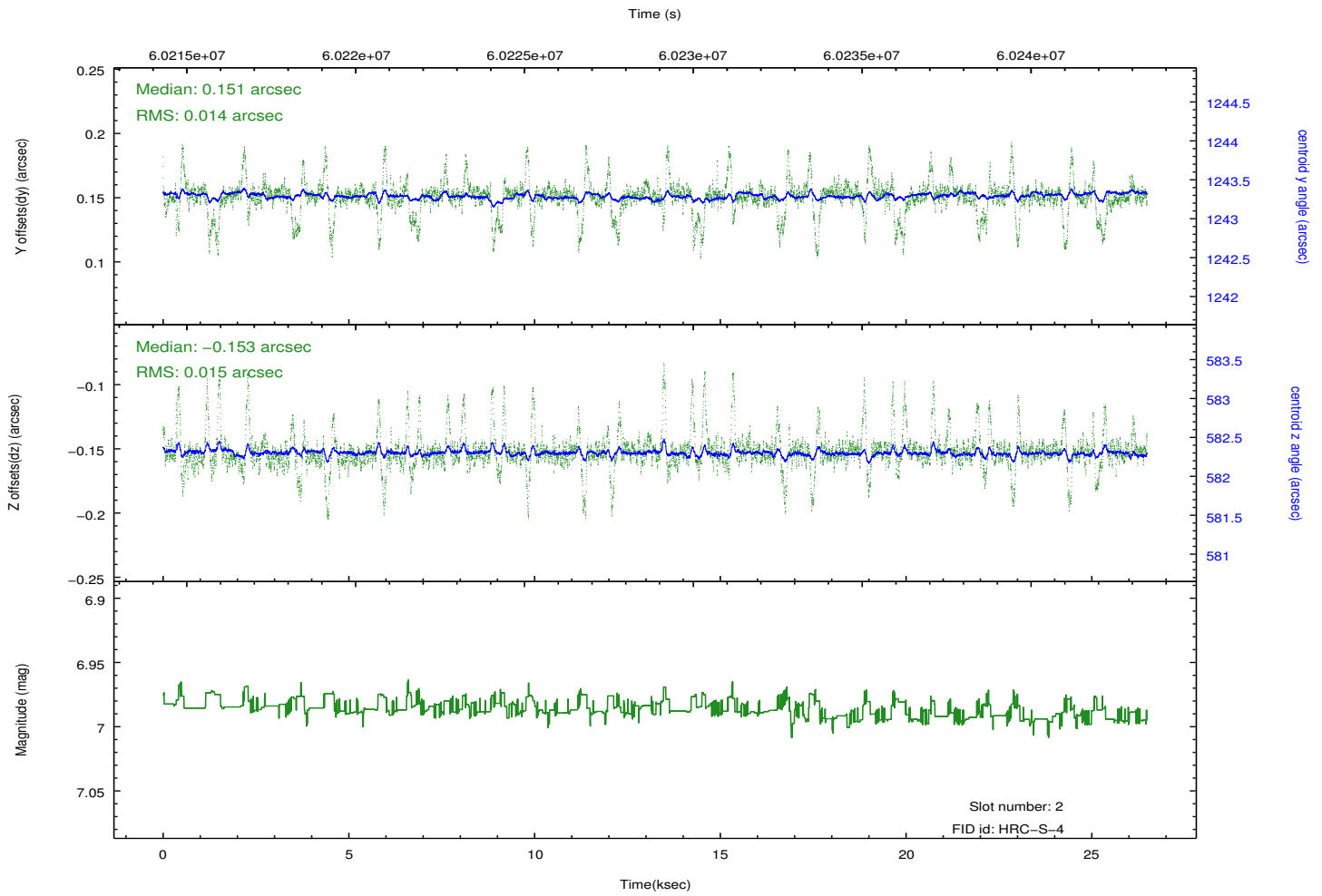
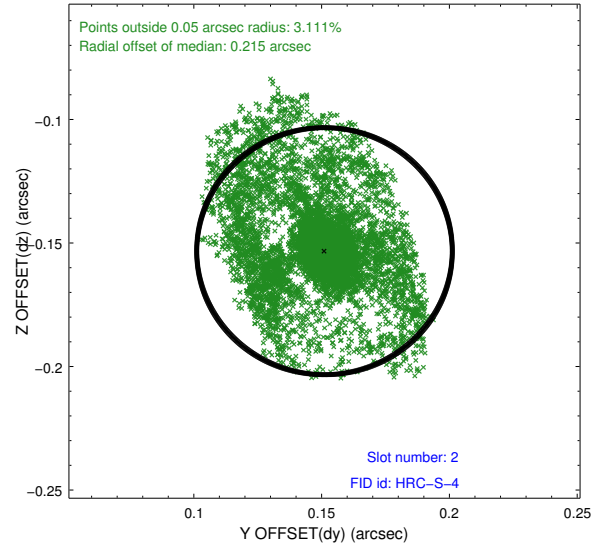
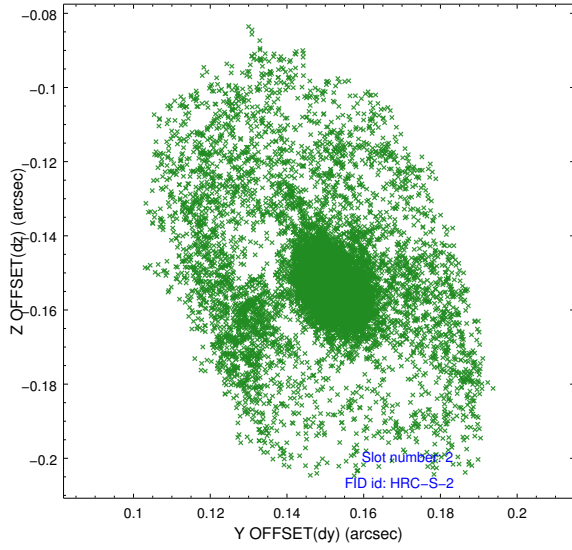
2.5.1 Slot 0



2.5.2 Slot 1

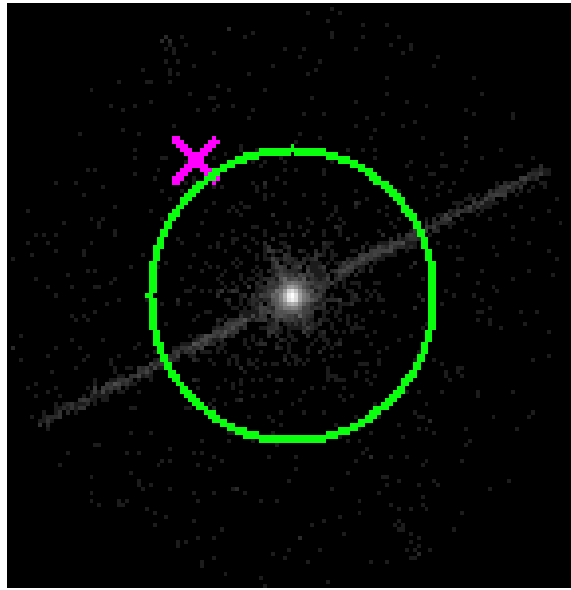


2.5.3 Slot 2

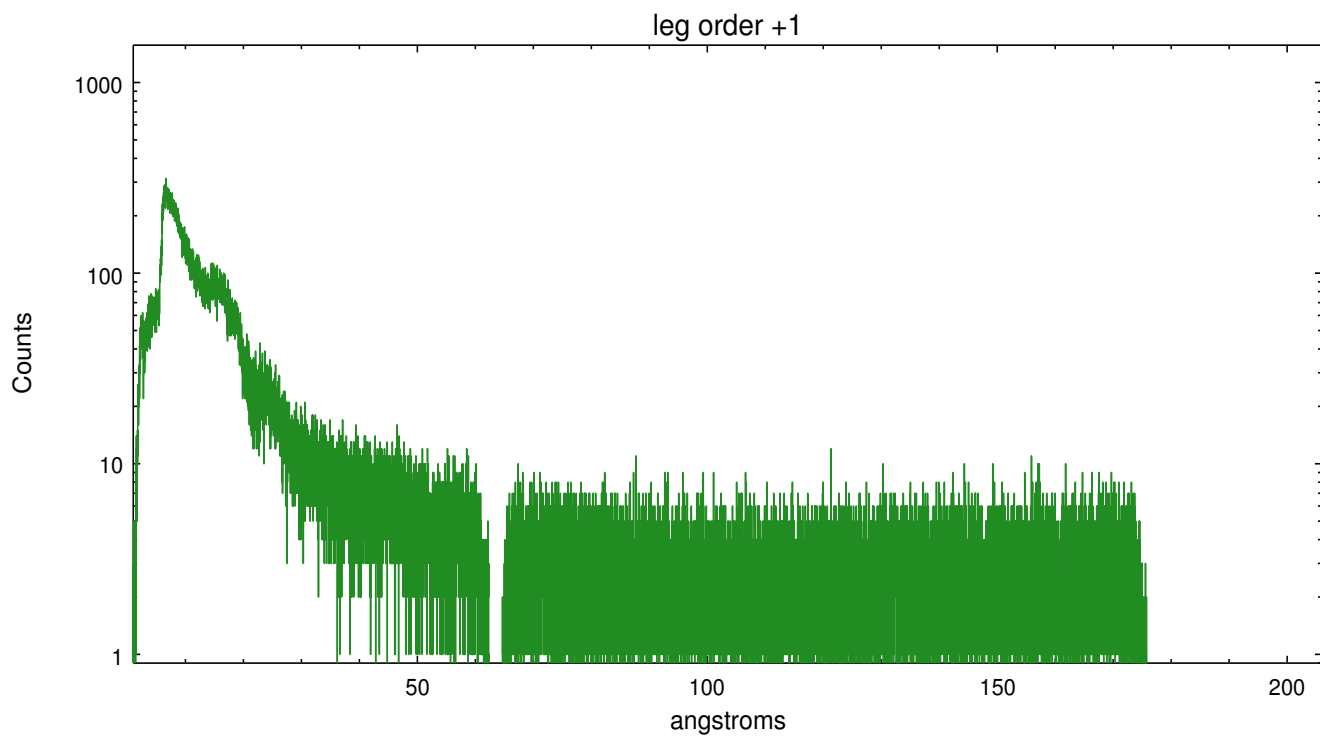
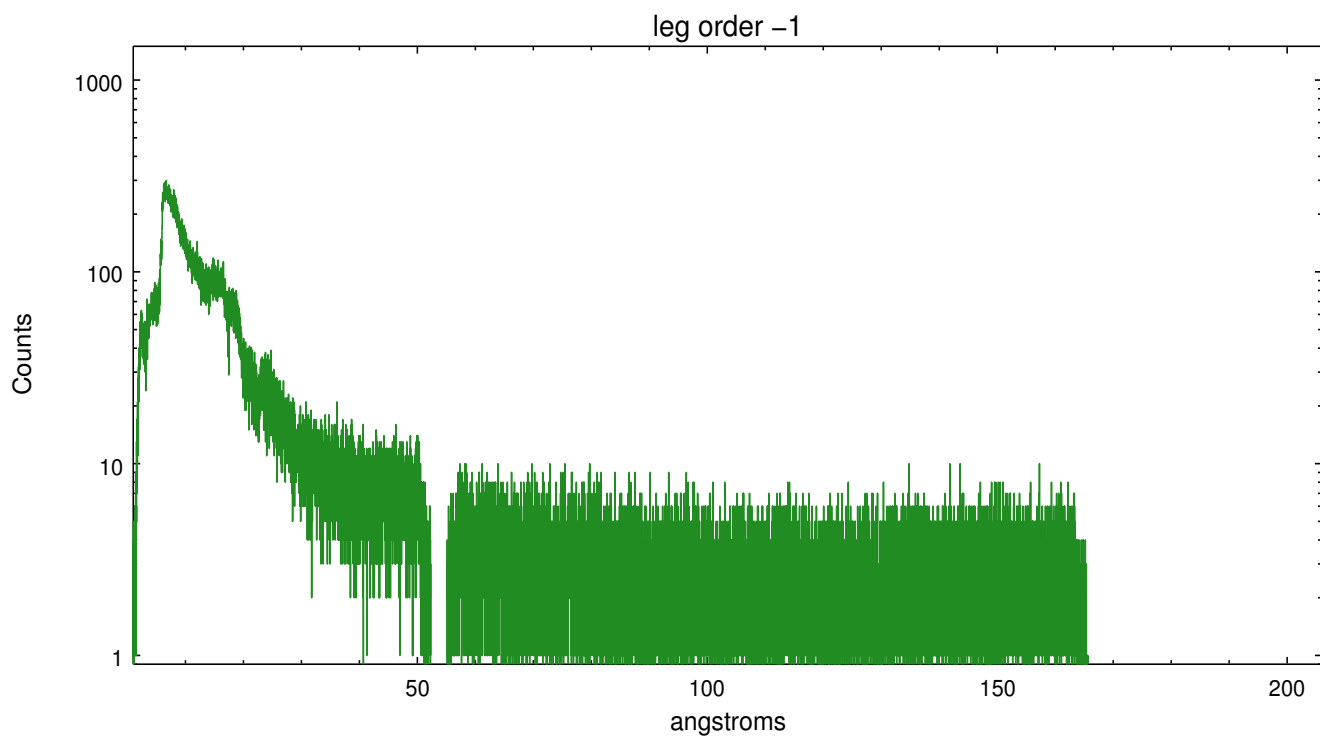


3 Gratings

3.1 LETG Arm



LETG Zero Order



A Summary

A.1 Status

V&V Scientist	Joy Nichols
V&V Date (YYYY-MM-DD)	2010.04.02
V&V Edition	1
V&V Disposition and Status	OK
V&V Charge Time	26.228

A.2 Comments

Charge time for this ObsId remains at original value of 26.228 ks, although with the current processing the charge time would have been 26.275 ksec.
===Roll constraint met.