

V&V Reference Report

L2 ASCDS Version : 8.4.4

Observation 10310 - L2 Version 2
Chandra X-Ray Center

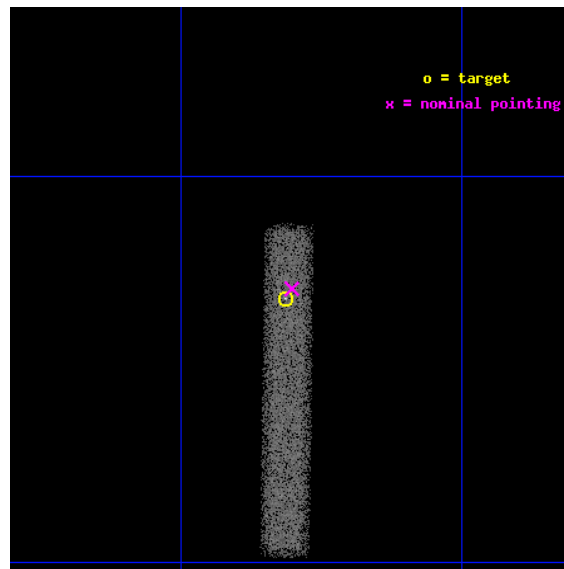
L2 Processing Date : Jun 1 2012

Contents

1	Front	2
2	OBI	3
2.1	OBI	3
2.1.1	Images	3
2.1.2	Bias	3
2.1.3	Parameters	4
2.1.4	Events	4
2.2	Compared Parameters	5
2.3	Aspect	6
2.4	Star Slots	9
2.4.1	Slot 3	9
2.4.2	Slot 4	10
2.4.3	Slot 5	11
2.4.4	Slot 6	12
2.4.5	Slot 7	13
2.5	FID Slots	14
2.5.1	Slot 0	14
2.5.2	Slot 1	15
2.5.3	Slot 2	16
A	Summary	17
A.1	Status	17
A.2	Comments	17

1 Front

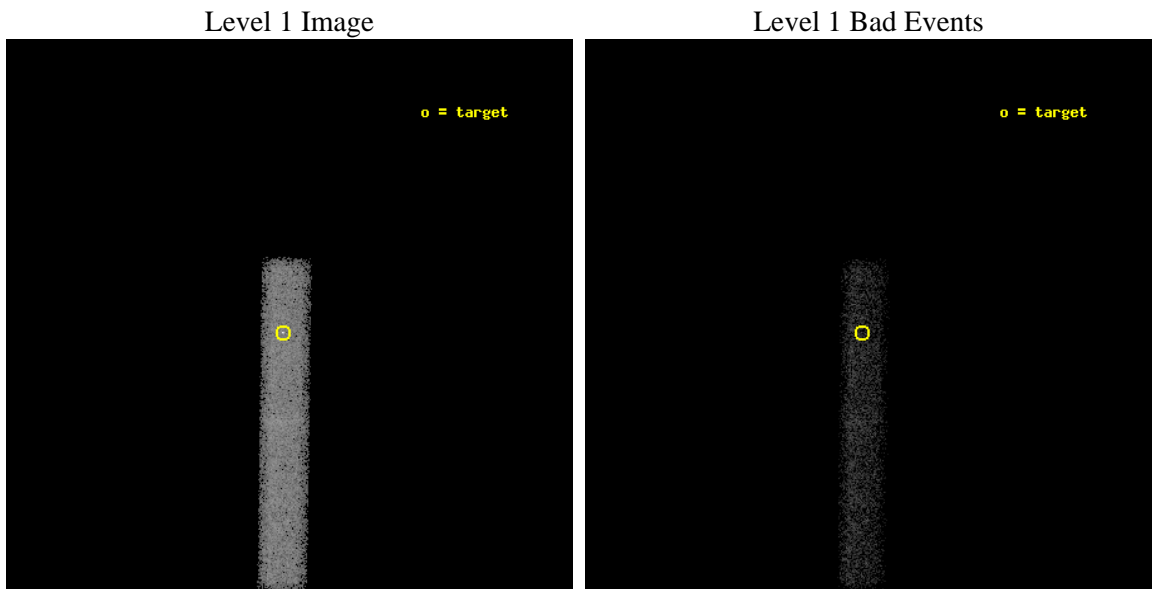
seq_num	701853	Sequence number
obs_id	10310	Observation id
title	Jets at Intermediate Redshifts: Shedding Light on Emission Mechanisms and Physics	Proposal title
observer	Dr. Rita Sambruna	Principal investigator
object	1318+113	Source name
dtcycle	0	
cycle	P	events from which exps? Prim/Second/Both
ra_targ	200.328333	Observer's specified target RA [deg]
dec_targ	11.113889	Observer's specified target Dec [deg]
ra_nom	200.32568432331	Nominal RA [deg]
dec_nom	11.117997078659	Nominal Dec [deg]
roll_nom	90.757124418398	Nominal Roll [deg]
revision	2	Processing version of data
ontime	20177.198797345	Sum of GTIs [s]
liveltime	18299.654269314	Livetime [s]
ontime7	20177.198797345	Sum of GTIs [s]
l2events	18119	Number of level 2 events



2 OBI

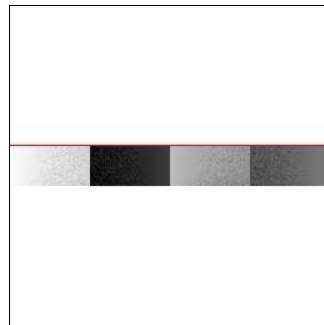
2.1 OBI

2.1.1 Images



2.1.2 Bias

Chip 7



2.1.3 Parameters

obi_num	0	Obi number	sched_exp_time	20000.000000	[s] Scheduled observation exposure time
ascdsver	8.4.4	Processing system revision	ontime	20177.198797345	Sum of GTIs [s]
caldbver	4.4.9	 	ontime7	20177.198797345	Sum of GTIs [s]
date	2012-06-01T23:53:11	Date and time of file creation	l1events	41345	Number of level 1 events
revision	2	Processing version of data			

2.1.4 Events

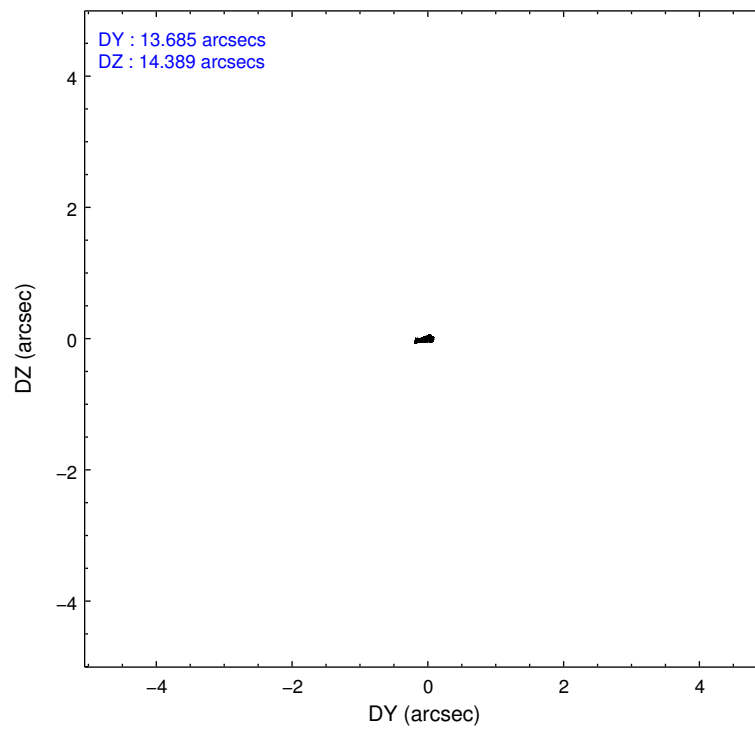
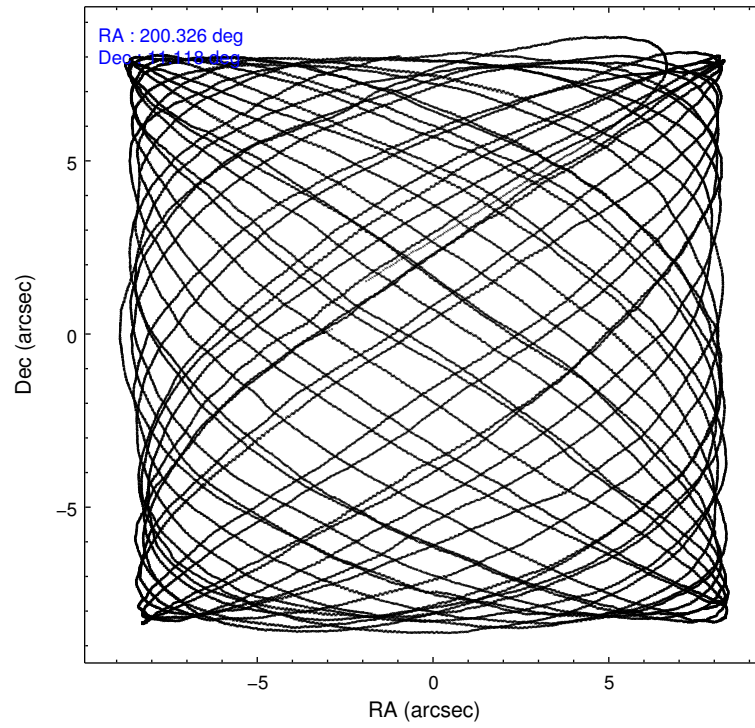
	ccd 7
level 1 events	41345
rejected events	22488
rejected %	54%

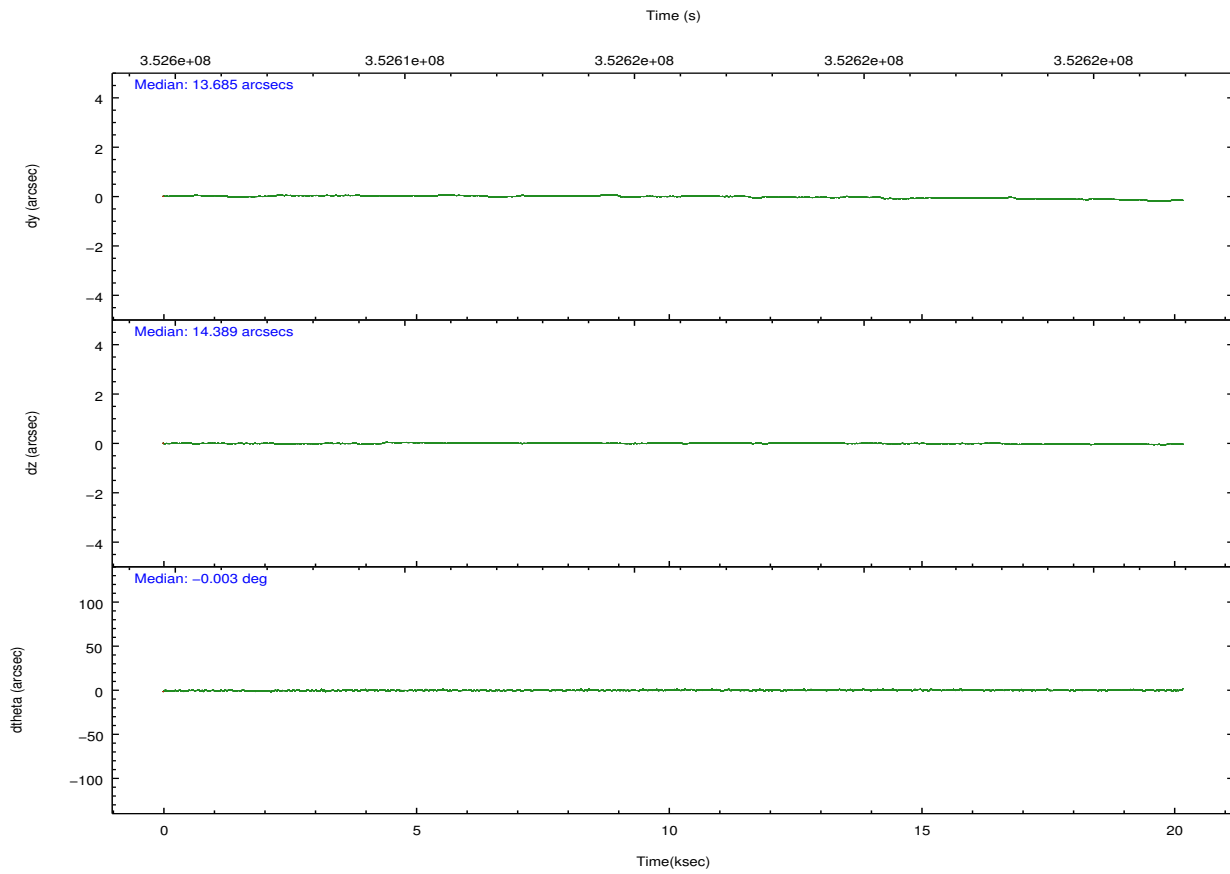
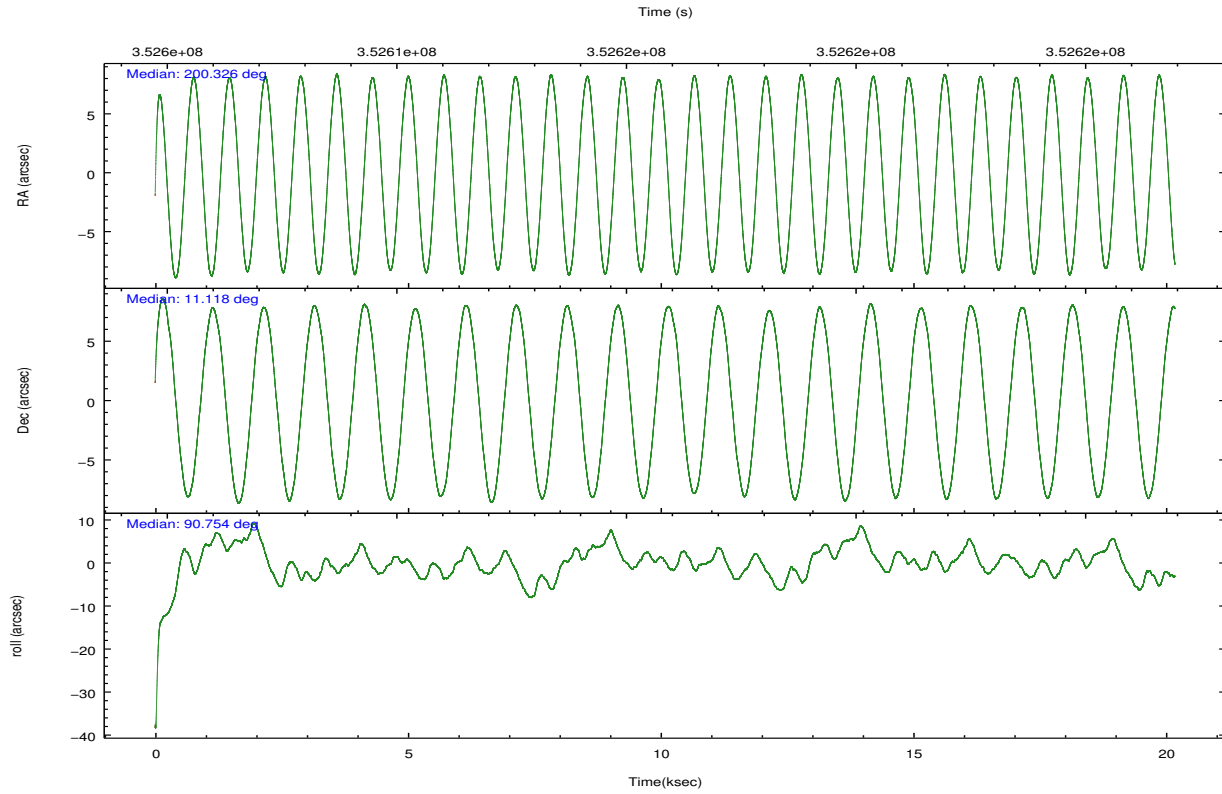
	ccd 7
grade 0 events	2206
	5%
grade 1 events	55
	0%
grade 2 events	3835
	9%
grade 3 events	2465
	5%
grade 4 events	2439
	5%
grade 5 events	3765
	9%
grade 6 events	8619
	20%
grade 7 events	17961
	43%

2.2 Compared Parameters

Parameter	Planned	Actual	Parameter	Planned	Actual
Instrument	ACIS	ACIS	Obspar format version number	7	7
Detector	ACIS-7	ACIS-7	Obspar file type	PREDICTED	ACTUAL
Grating	NONE	NONE	Obspar update status	NONE	UPDATED
Data mode	FAINT	FAINT	Number of optional ACIS chips dropped	0	0
Observation mode	POINTING	POINTING	On-chip summing requested	N	N
[deg] Pointing RA	200.340261	200.3256843233072	Subarray requested	CUSTOM	1/8
[deg] Pointing Dec	11.094679	11.11799707865903	Subarray start row	449	449
[deg] Pointing Roll	90.597703	90.75712441839812	Subarray row count	128	128
[mm] SIM focus pos	-0.684267	-0.6828225247311905	Alternating exposures requested	N	N
[mm] SIM defocus	0	0.001444936568705701	[s] Primary exposure time	0.000000	0.4
[mm] SIM translation stage pos	-190.132523	-190.1400660498719			
[mm] SIM translation stage offset	0	0.00754346686406393			
[s] Observation start time (MET)	352605924.184000	352604930.9802			
Observation start date	2009-03-05T02:04:18	2009-03-05T01:48:50			
[s] Observation end time (MET)	352625924.184000	352626763.99379			
Observation end date	2009-03-05T07:37:38	2009-03-05T07:52:43			
Read mode	TIMED	TIMED			

2.3 Aspect



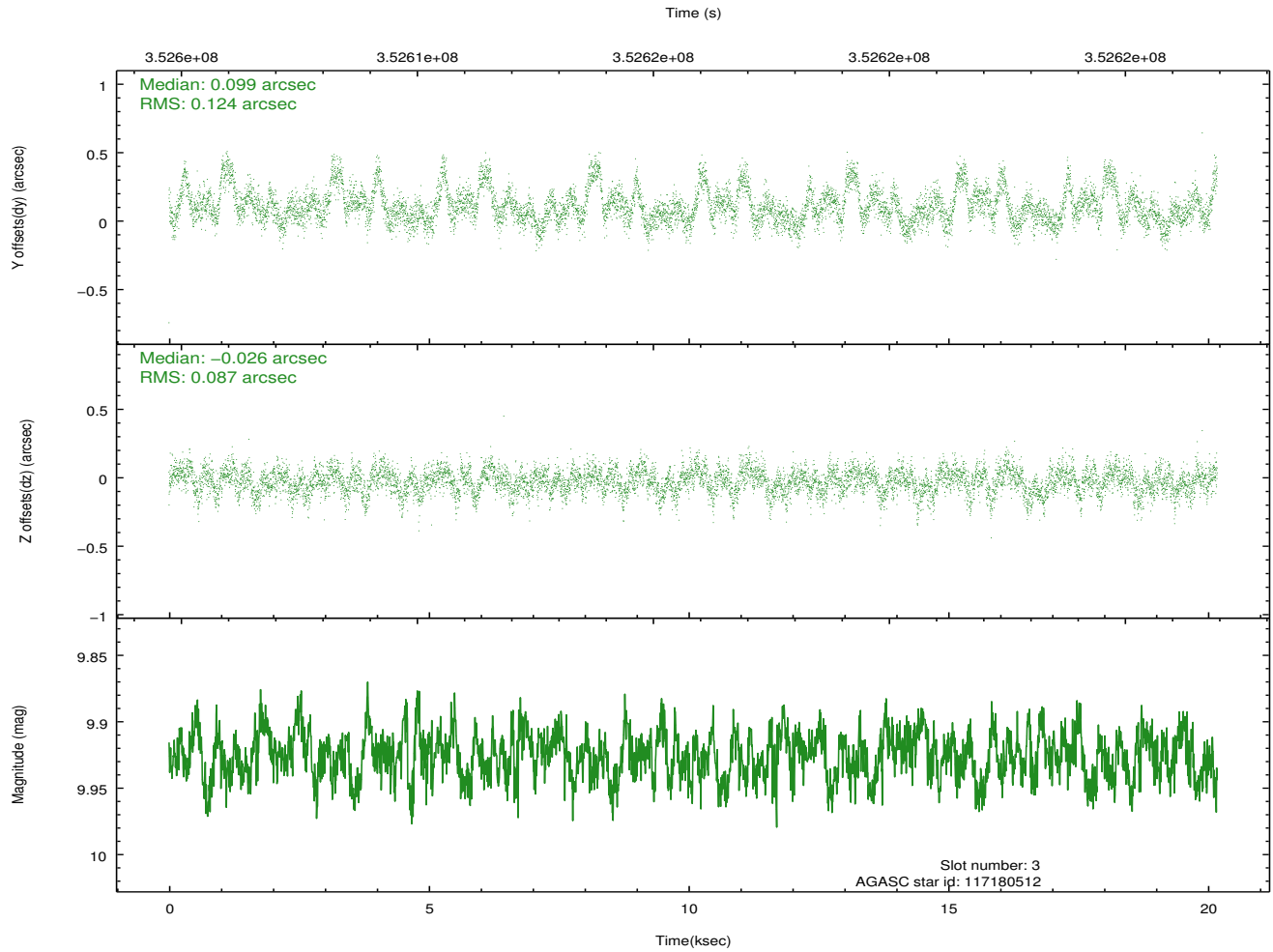
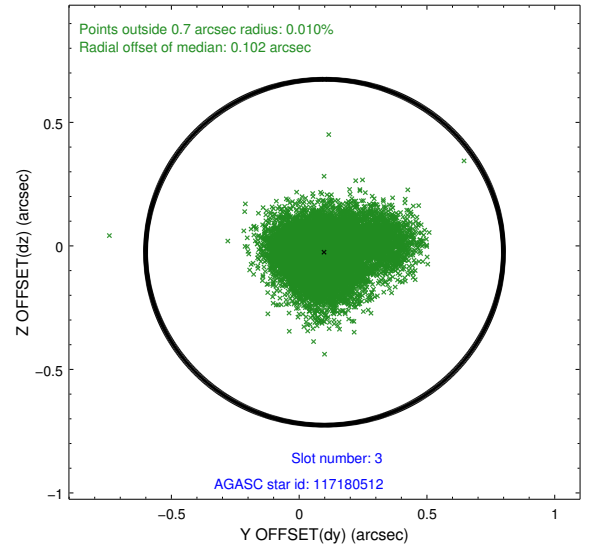
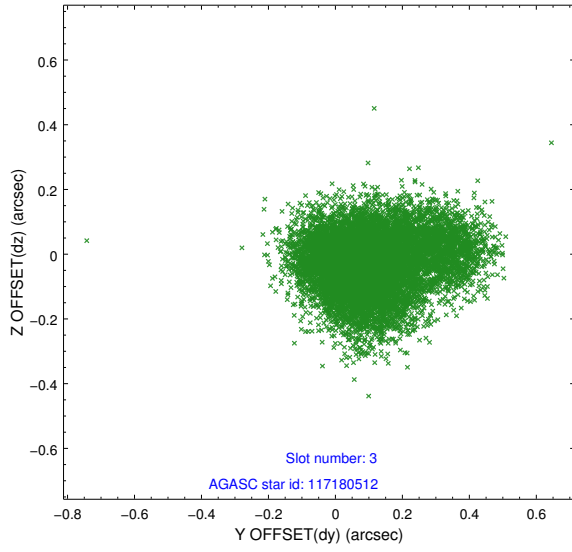


Slot Statistics

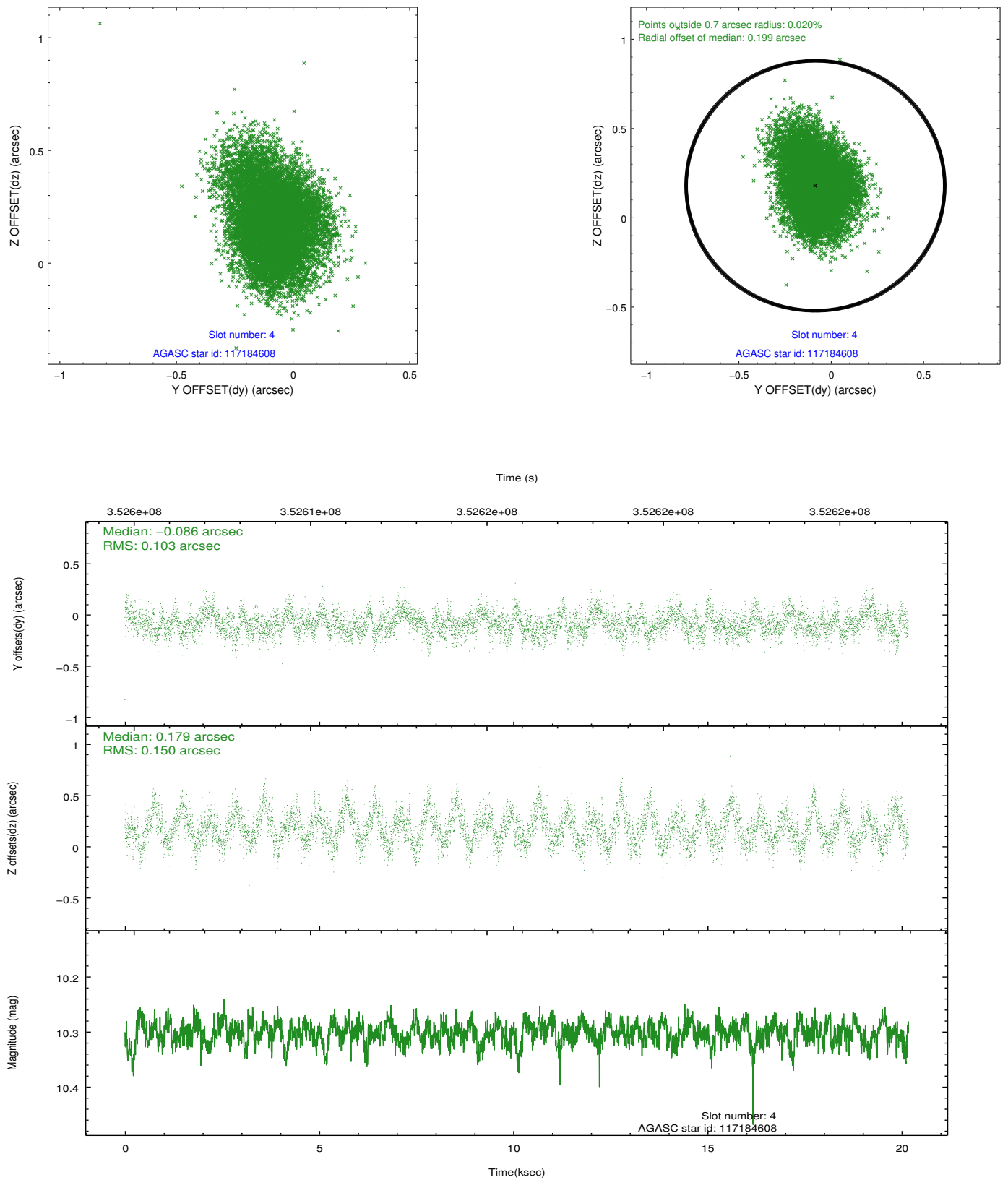
slot	status	id	mag	n_pts	med_dy	med_dz	dr1	dr2	ra	dec	mean_y	mean_z
0	FID	ACIS-S-1	7.01	4922	0.034	0.023	0.007	0.012	0.000000	0.000000	929.41	-1731.39
1	FID	ACIS-S-2	6.93	4922	-0.127	-0.061	0.006	0.010	0.000000	0.000000	-766.56	-1736.15
2	FID	ACIS-S-4	7.01	4922	0.066	0.044	0.006	0.011	0.000000	0.000000	2146.66	172.56
3	GUIDE	117180512	9.93	9820	0.099	-0.026	0.158	0.275	200.309525	10.588472	-1821.26	127.95
4	GUIDE	117184608	10.30	9825	-0.086	0.179	0.192	0.314	200.724038	11.291352	694.83	-1361.67
5	GUIDE	117185080	9.94	9806	-0.176	-0.012	0.160	0.249	200.047533	11.262382	614.96	1027.24
6	GUIDE	117185920	10.16	9775	0.106	-0.024	0.197	0.308	199.763151	11.680424	2132.05	2012.95
7	GUIDE	117178600	9.76	9819	0.029	-0.128	0.238	0.372	199.664891	10.814442	-981.00	2398.76

2.4 Star Slots

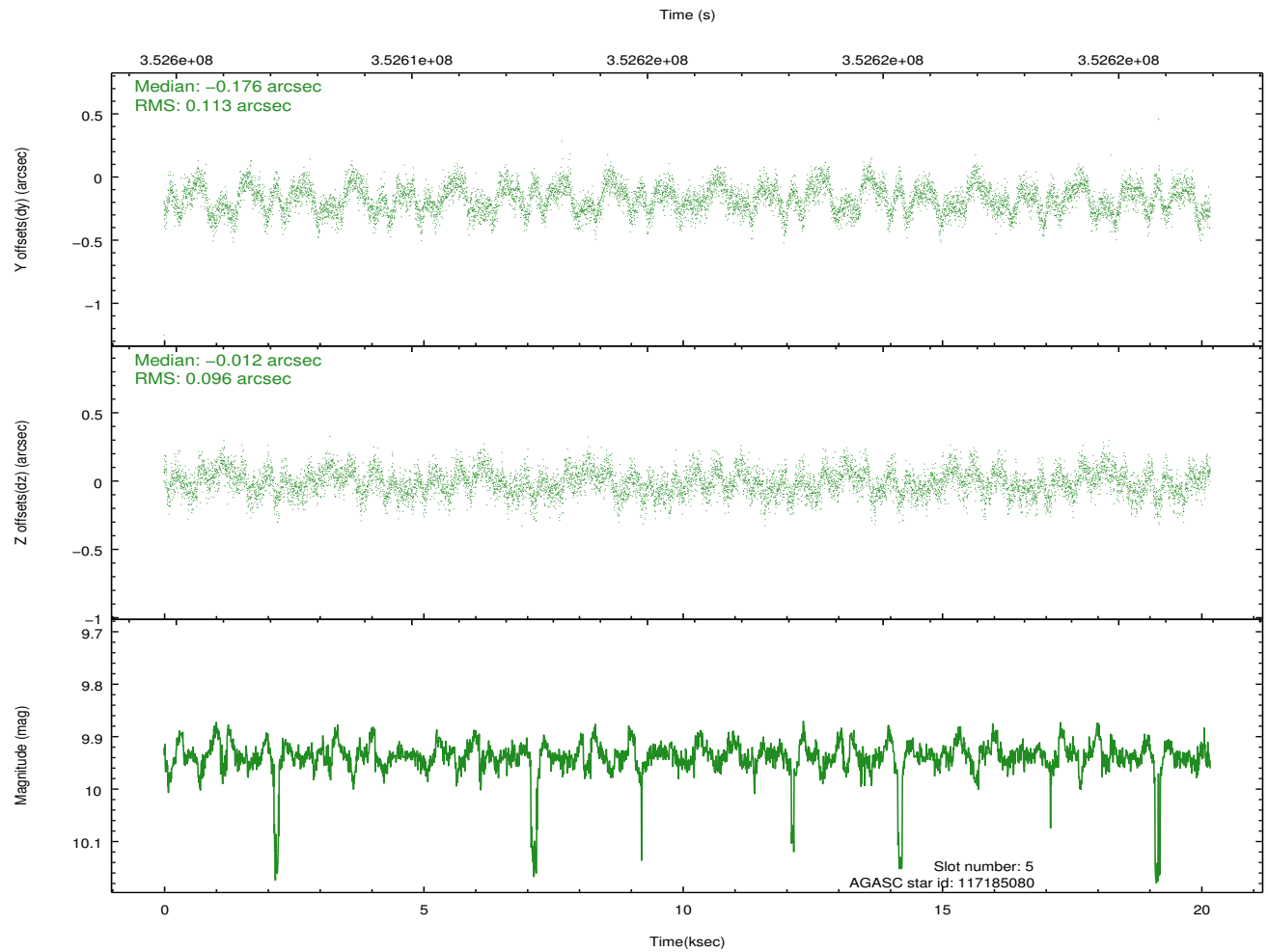
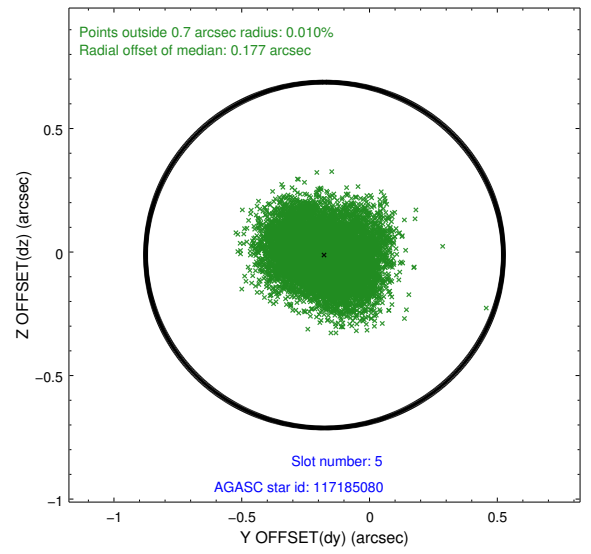
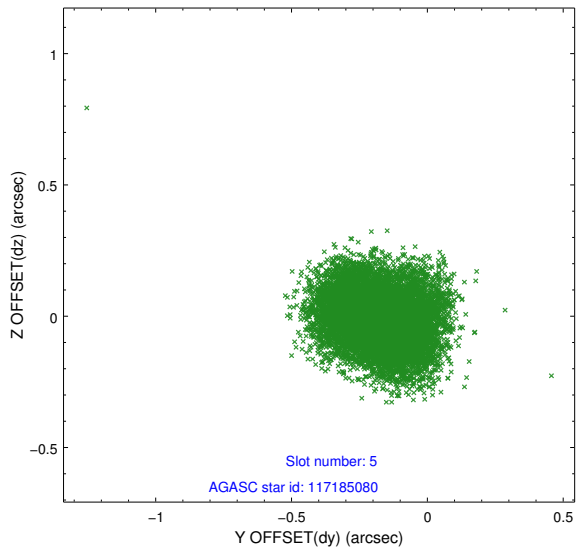
2.4.1 Slot 3



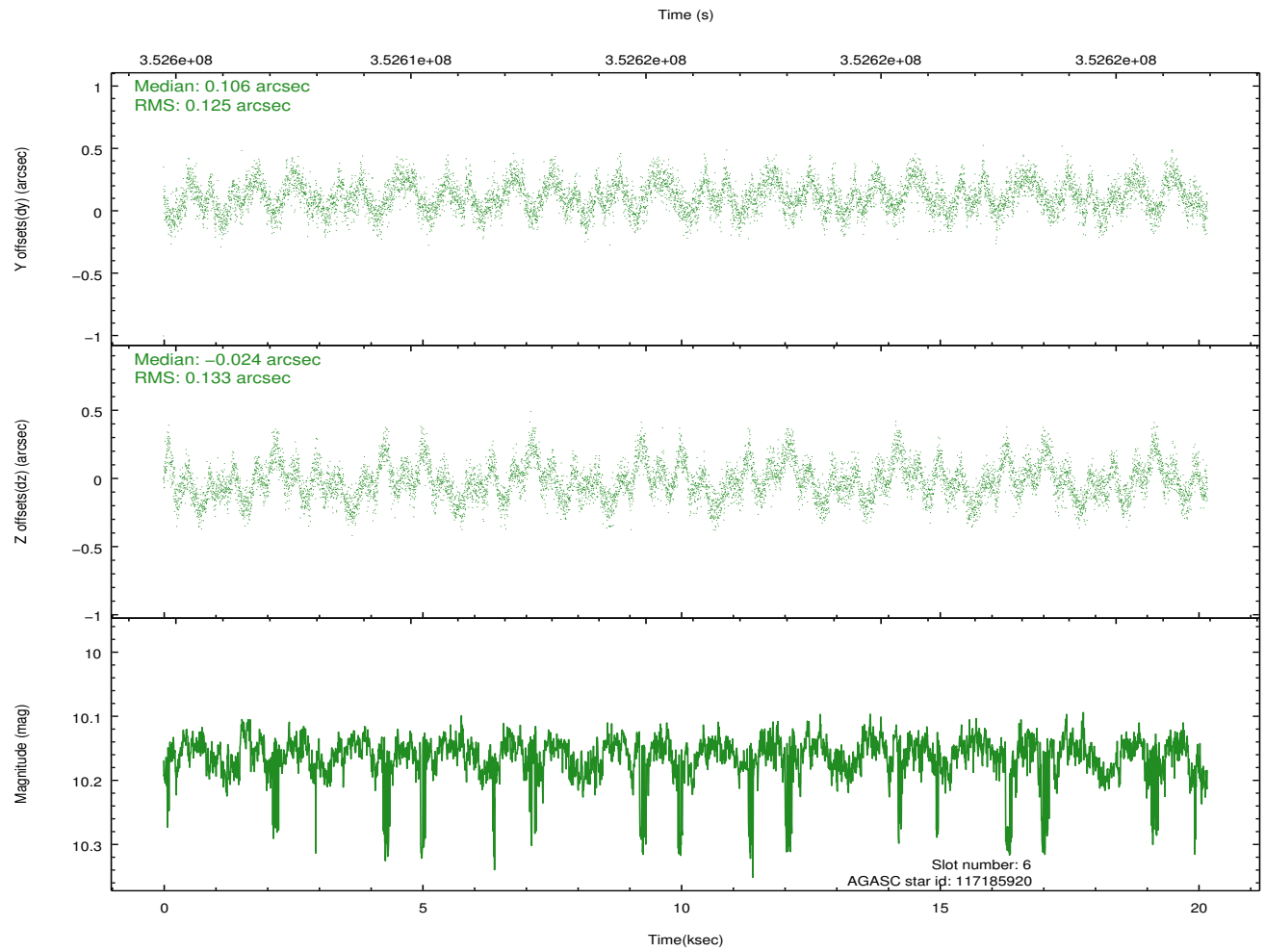
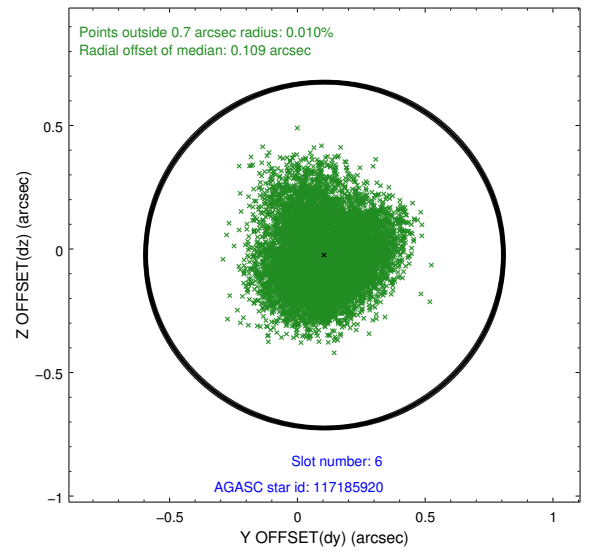
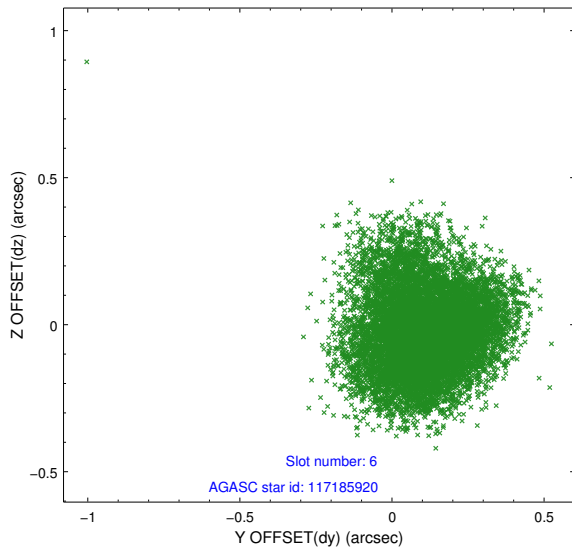
2.4.2 Slot 4



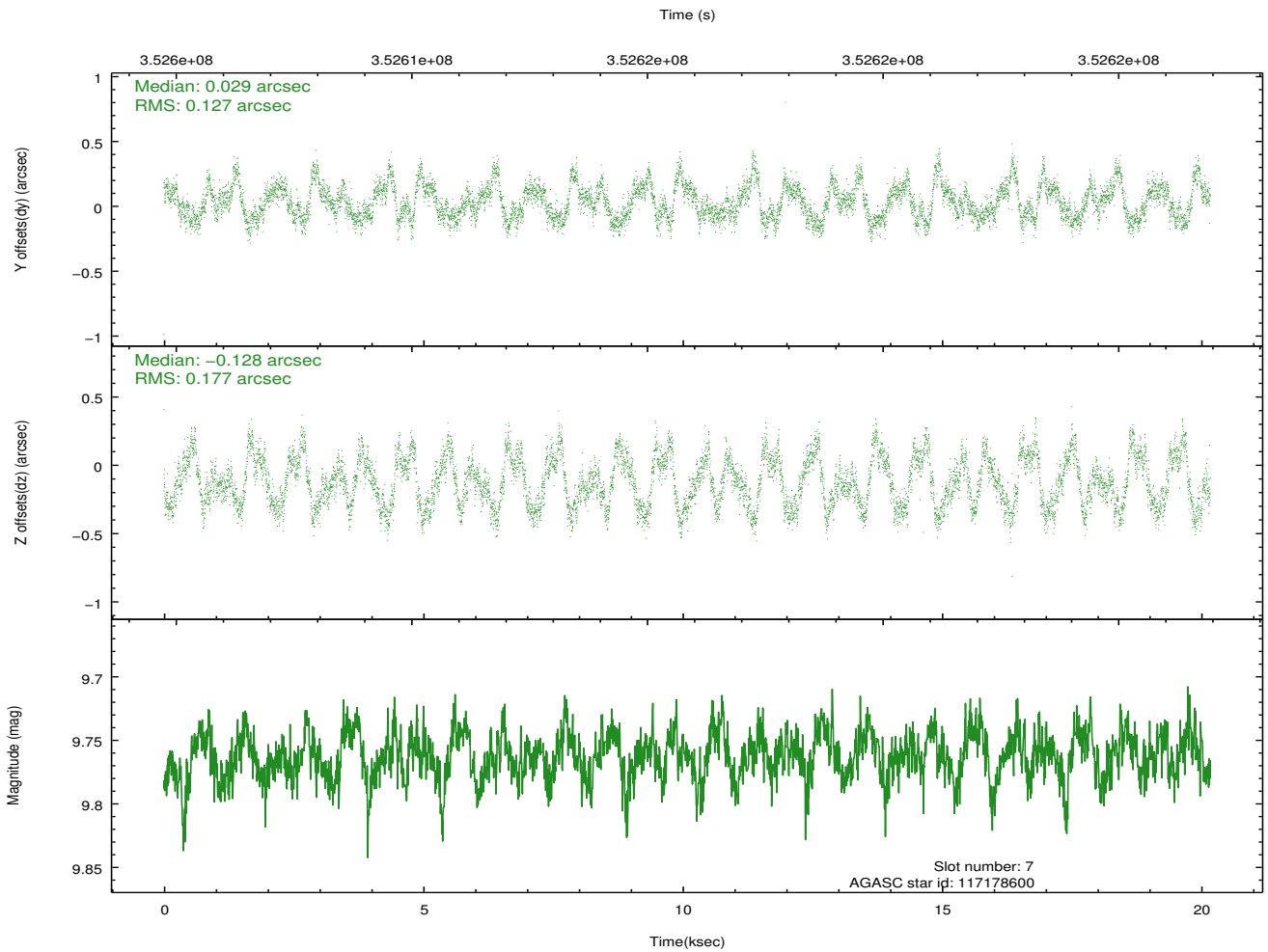
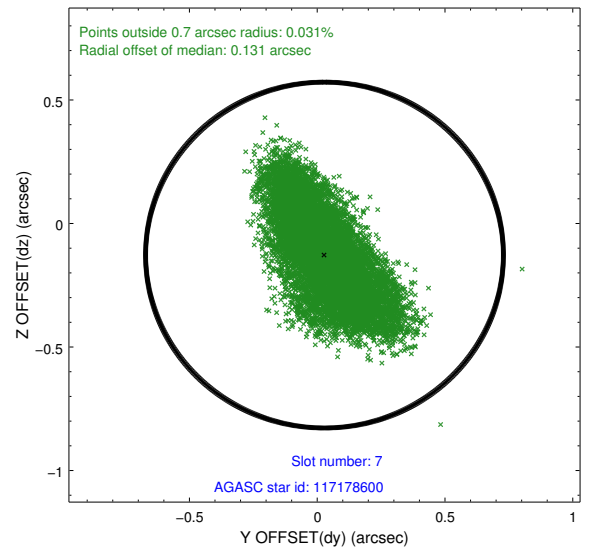
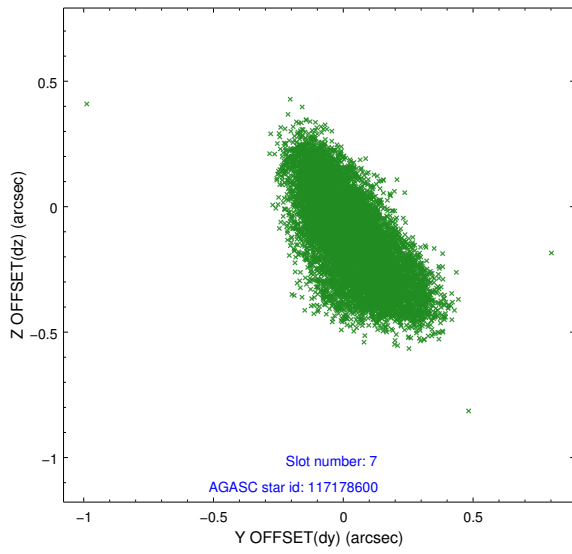
2.4.3 Slot 5



2.4.4 Slot 6

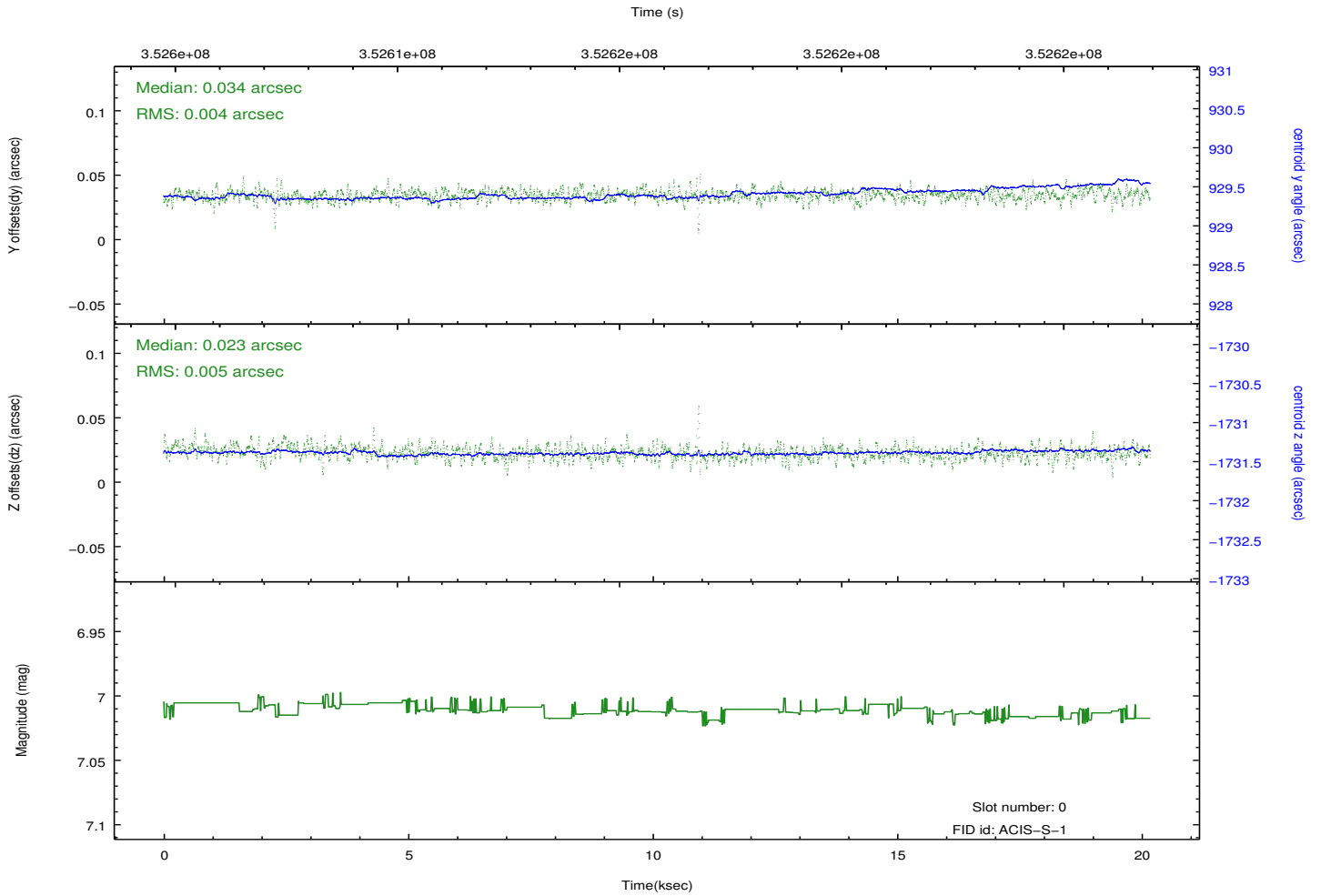
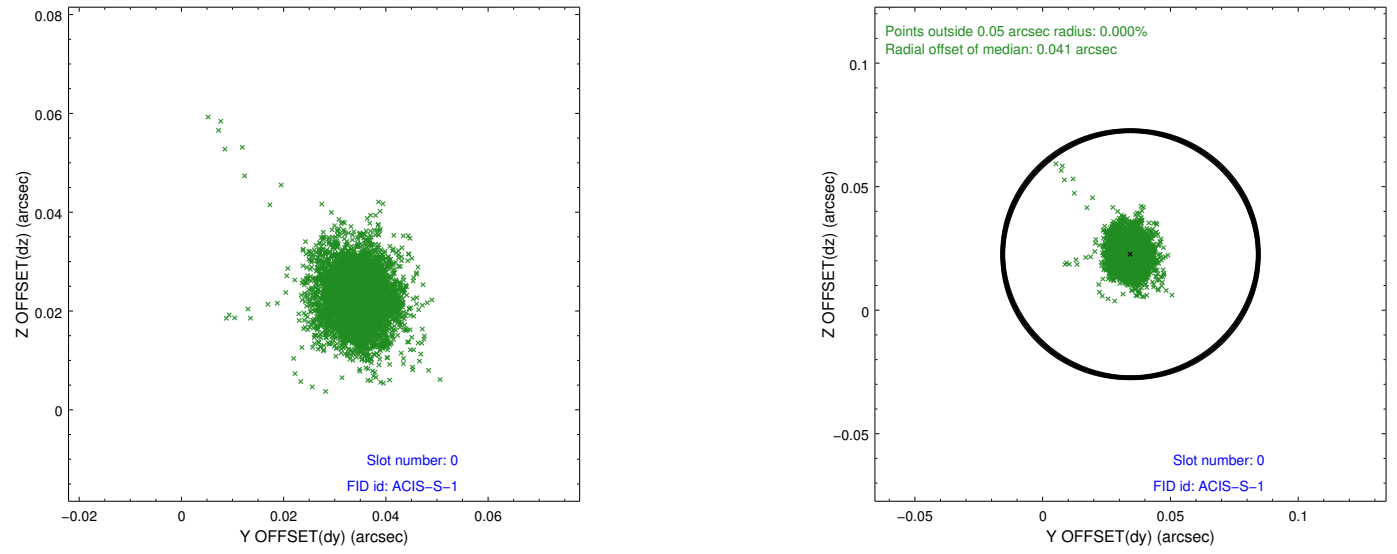


2.4.5 Slot 7

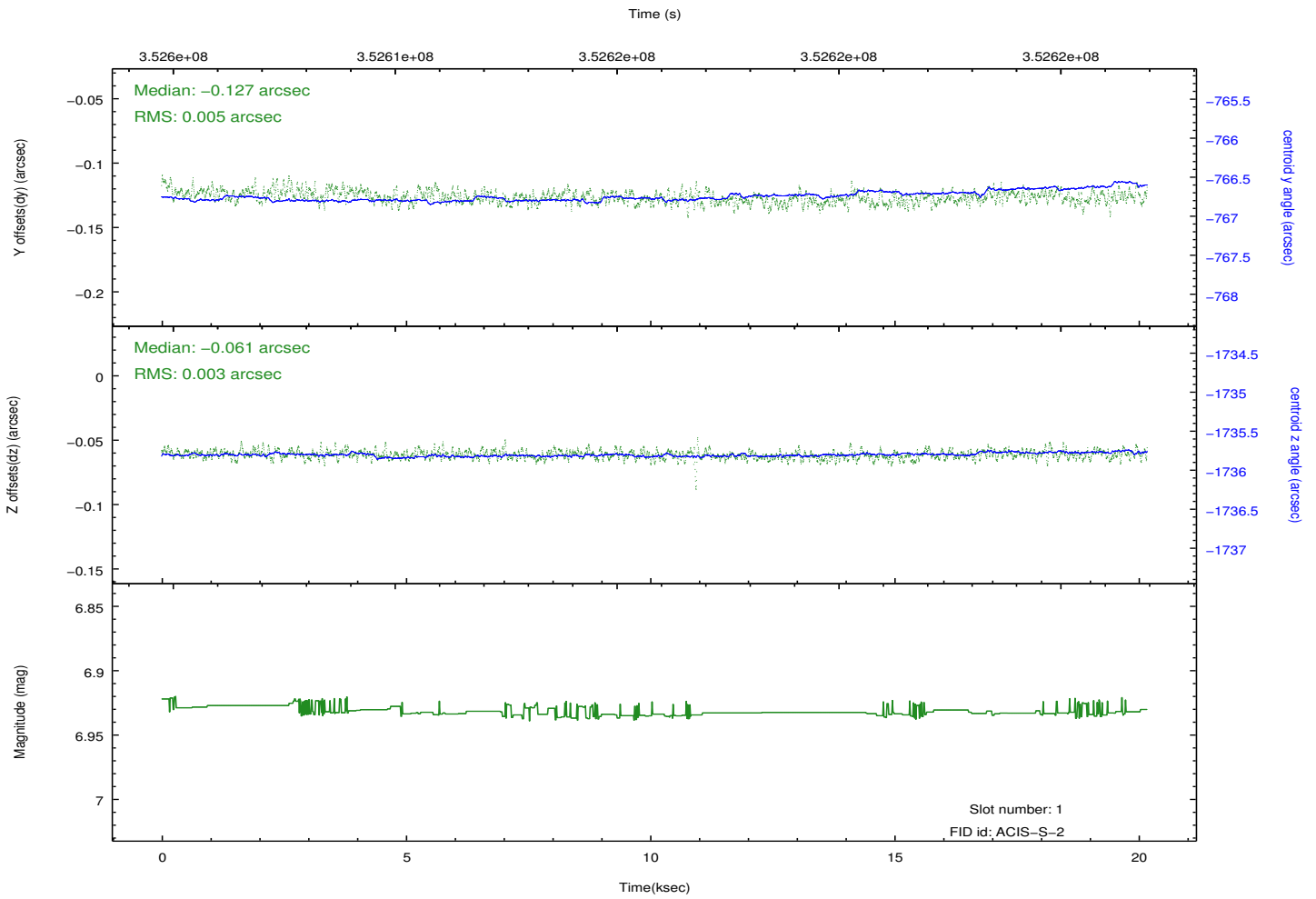
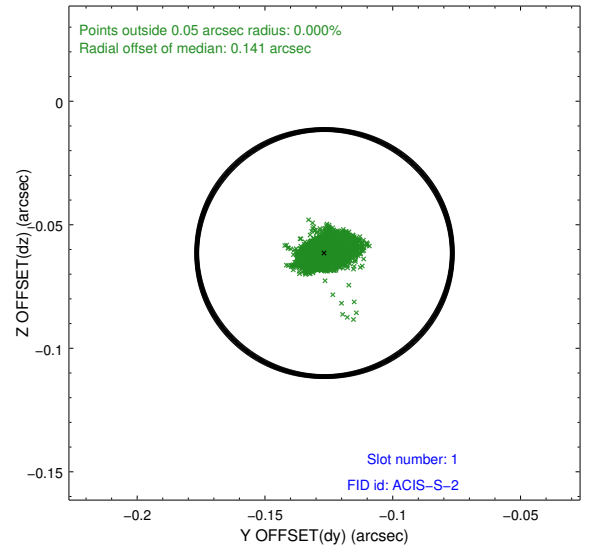
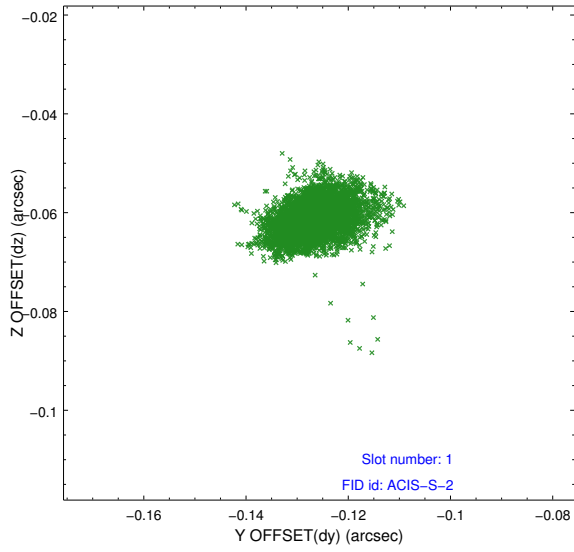


2.5 FID Slots

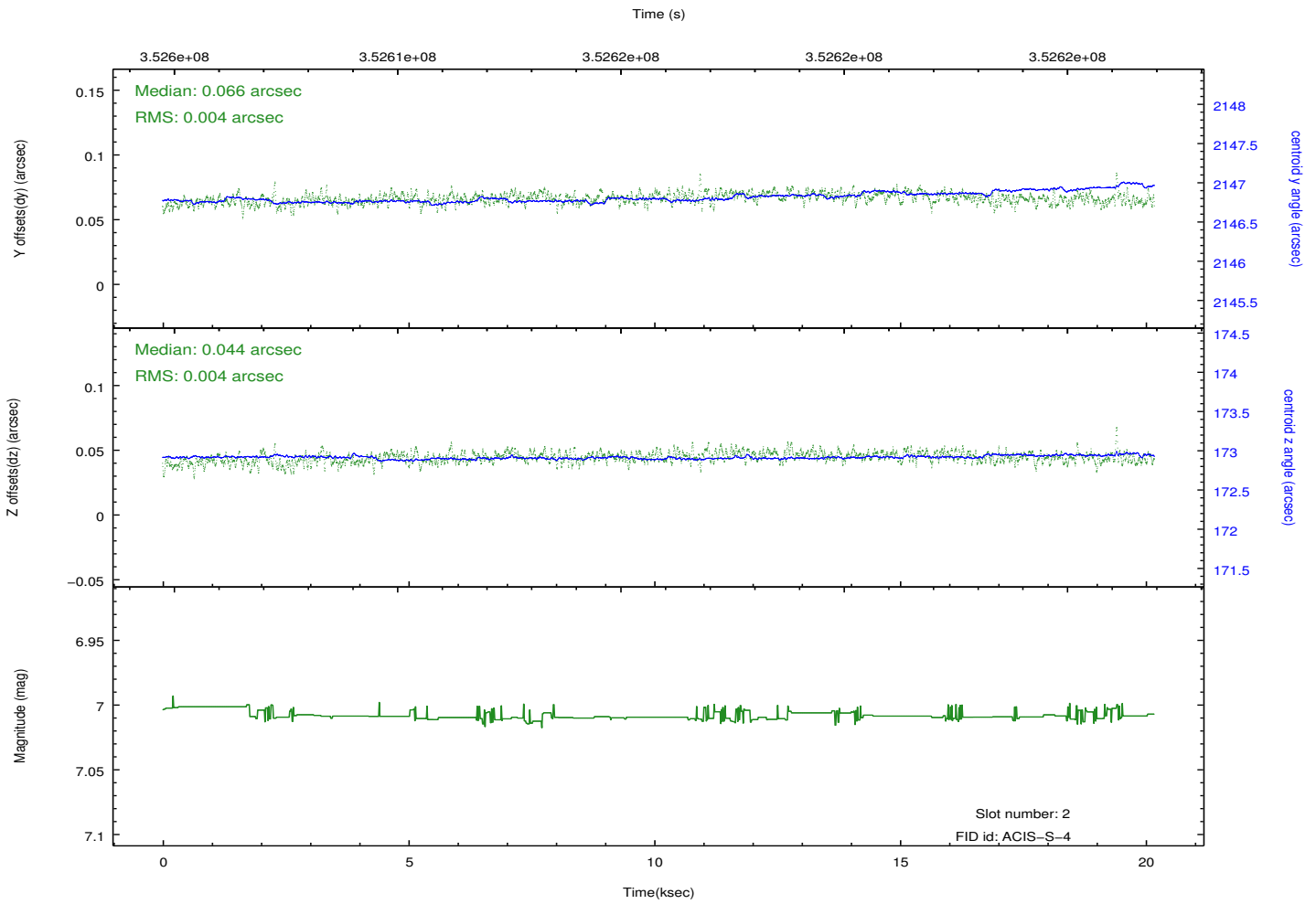
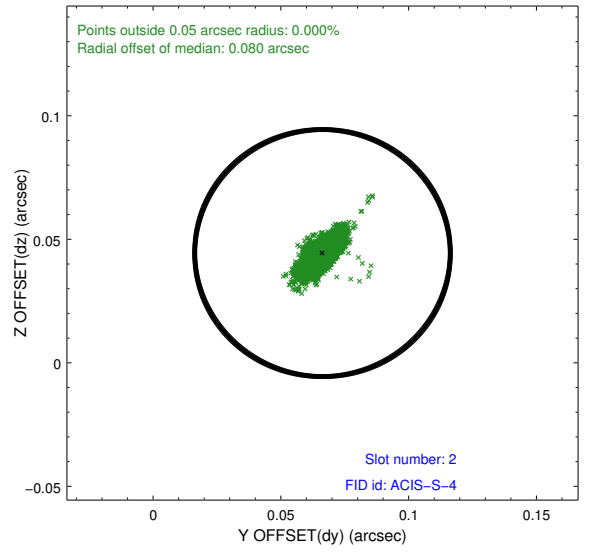
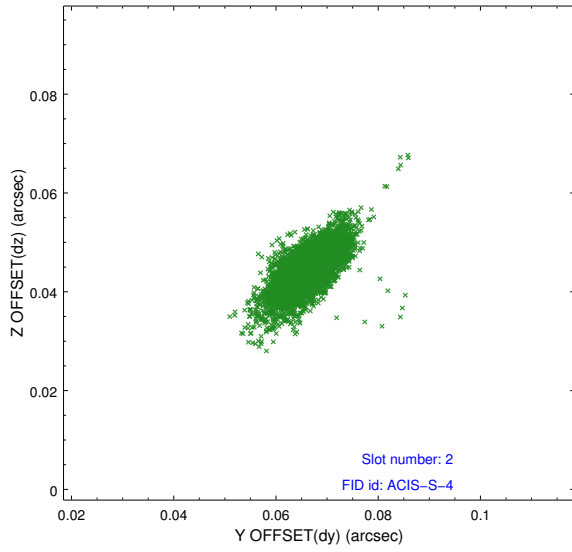
2.5.1 Slot 0



2.5.2 Slot 1



2.5.3 Slot 2



A Summary

A.1 Status

V&V Scientist	Joy Nichols
V&V Date (YYYY-MM-DD)	2012.06.07
V&V Edition	1
V&V Disposition and Status	OK
V&V Charge Time	20.1771987

A.2 Comments

Coordinated with HST.