

V&V Reference Report

L2 ASCDS Version : 8.4.5

Observation 10350 - L2 Version 2
Chandra X-Ray Center

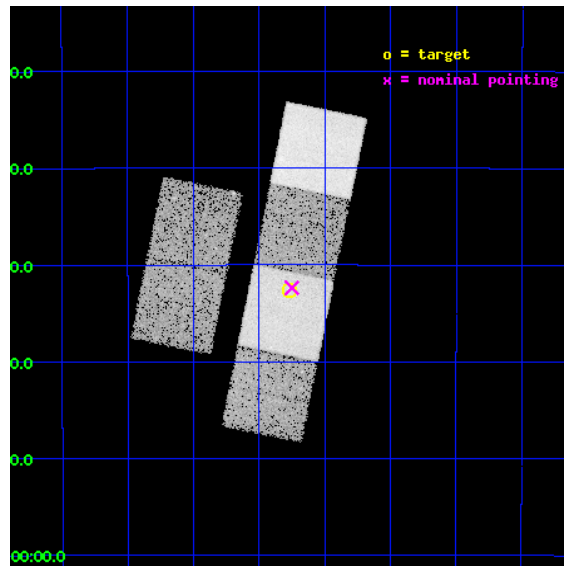
L2 Processing Date : Jun 9 2012

Contents

1	Front	2
2	OBI	3
2.1	OBI	3
2.1.1	Images	3
2.1.2	Bias	3
2.1.3	Parameters	4
2.1.4	Events	4
2.2	Compared Parameters	5
2.3	Aspect	6
2.4	Star Slots	9
2.4.1	Slot 3	9
2.4.2	Slot 4	10
2.4.3	Slot 5	11
2.4.4	Slot 6	12
2.4.5	Slot 7	13
2.5	FID Slots	14
2.5.1	Slot 0	14
2.5.2	Slot 1	15
2.5.3	Slot 2	16
A	Summary	17
A.1	Status	17
A.2	Comments	17

1 Front

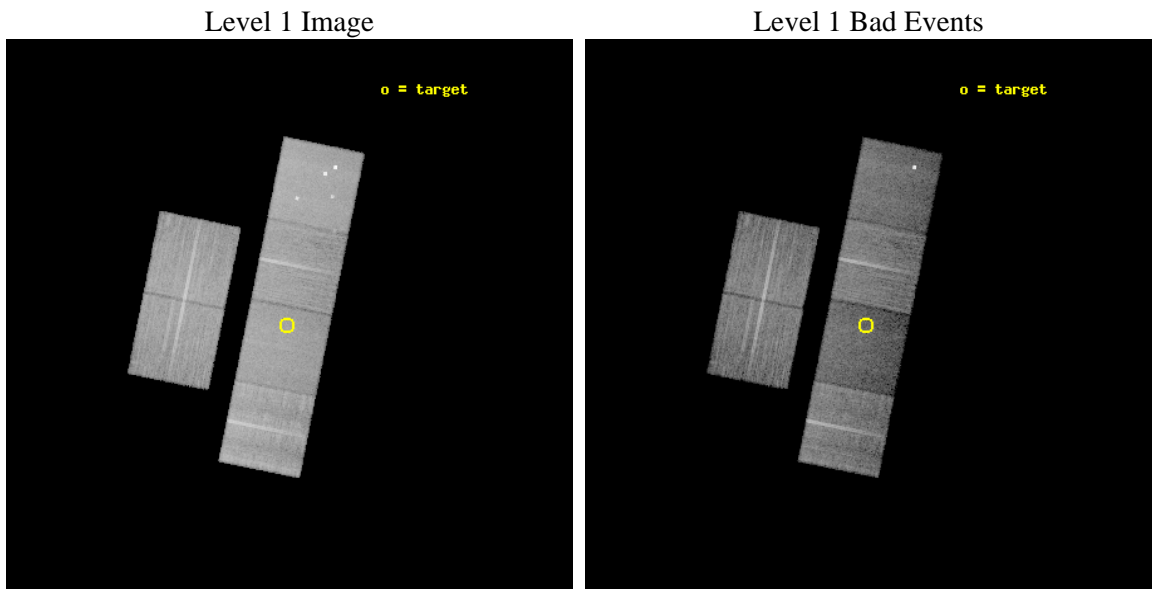
seq_num	701893	Sequence number
obs_id	10350	Observation id
title	Evolution of Activity in Massive Gas-rich Mergers: The X-ray Perspective	Proposal title
observer	Prof. Sylvain Veilleux	Principal investigator
object	F21329-2346	Source name
dtycycle	0	
cycle	P	events from which exps? Prim/Second/Both
ra_targ	323.94125	Observer's specified target RA [deg]
dec_targ	-23.542972	Observer's specified target Dec [deg]
ra_nom	323.93766257997	Nominal RA [deg]
dec_nom	-23.539442709024	Nominal Dec [deg]
roll_nom	101.466060207	Nominal Roll [deg]
revision	2	Processing version of data
ontime	15174.399943531	Sum of GTIs [s]
livetime	14982.252554519	Livetime [s]
ontime2	15171.158943236	Sum of GTIs [s]
ontime3	15174.399943531	Sum of GTIs [s]
ontime5	15174.399943531	Sum of GTIs [s]
ontime6	15171.158953249	Sum of GTIs [s]
ontime7	15174.399943531	Sum of GTIs [s]
ontime8	15167.918022335	Sum of GTIs [s]
l2events	177962	Number of level 2 events



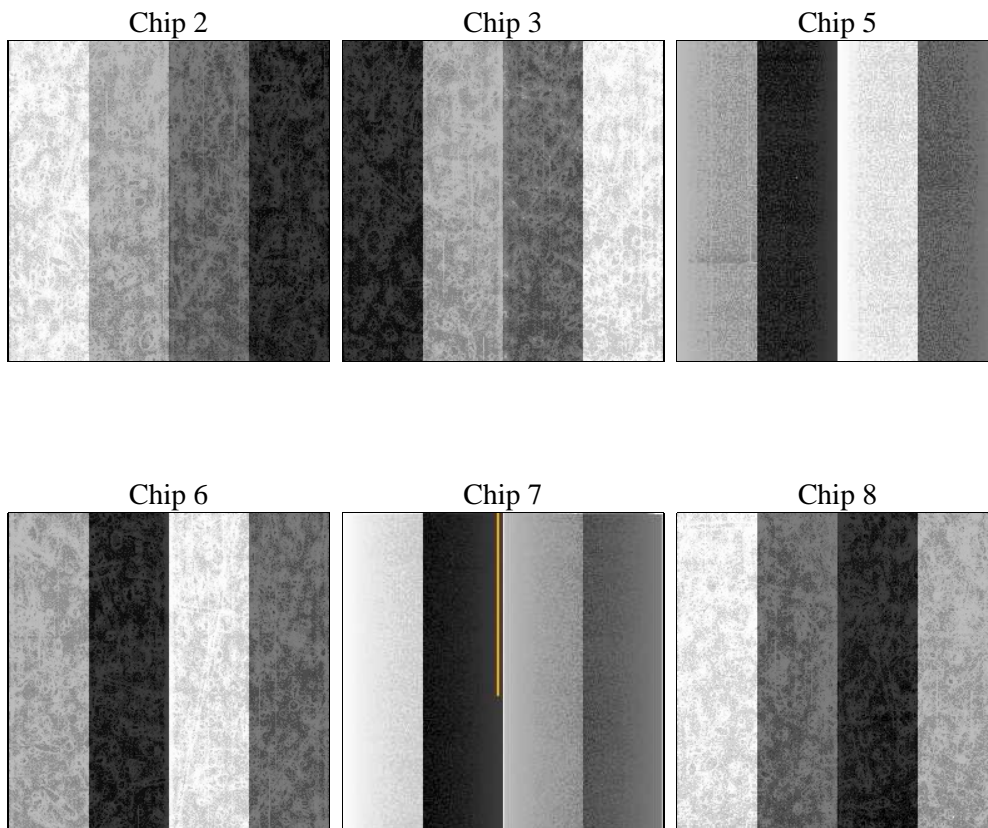
2 OBI

2.1 OBI

2.1.1 Images



2.1.2 Bias



2.1.3 Parameters

obi_num	0	Obi number	sched_exp_time	15000.000000	[s] Scheduled observation exposure time
ascdsver	8.4.5	Processing system revision	ontime	15174.399943531	Sum of GTIs [s]
caldbver	4.4.10	 	ontime2	15171.158943236	Sum of GTIs [s]
date	2012-06-09T07:55:40	Date and time of file creation	ontime3	15174.399943531	Sum of GTIs [s]
revision	2	Processing version of data	ontime5	15174.399943531	Sum of GTIs [s]
			ontime6	15171.158953249	Sum of GTIs [s]
			ontime7	15174.399943531	Sum of GTIs [s]
			ontime8	15167.918022335	Sum of GTIs [s]
			l1events	855504	Number of level 1 events

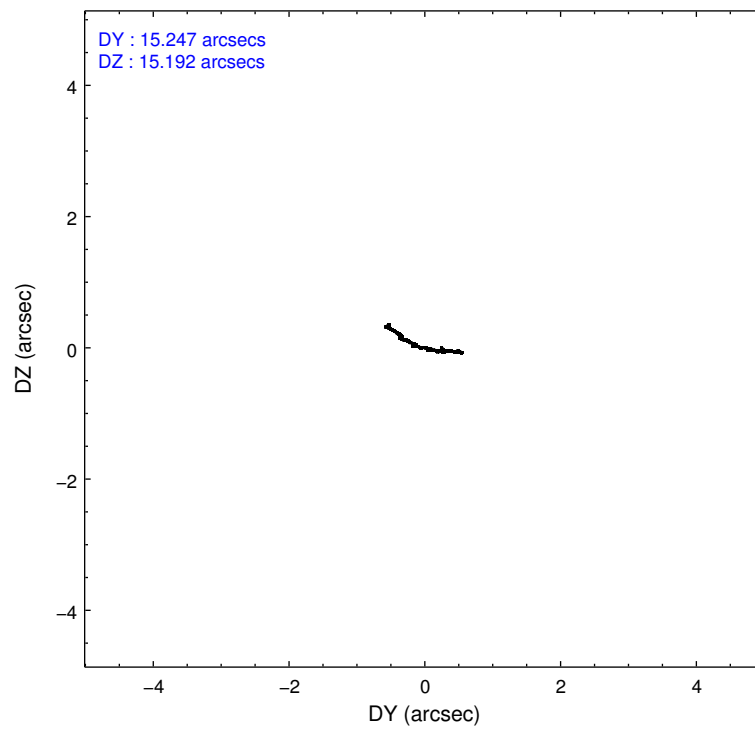
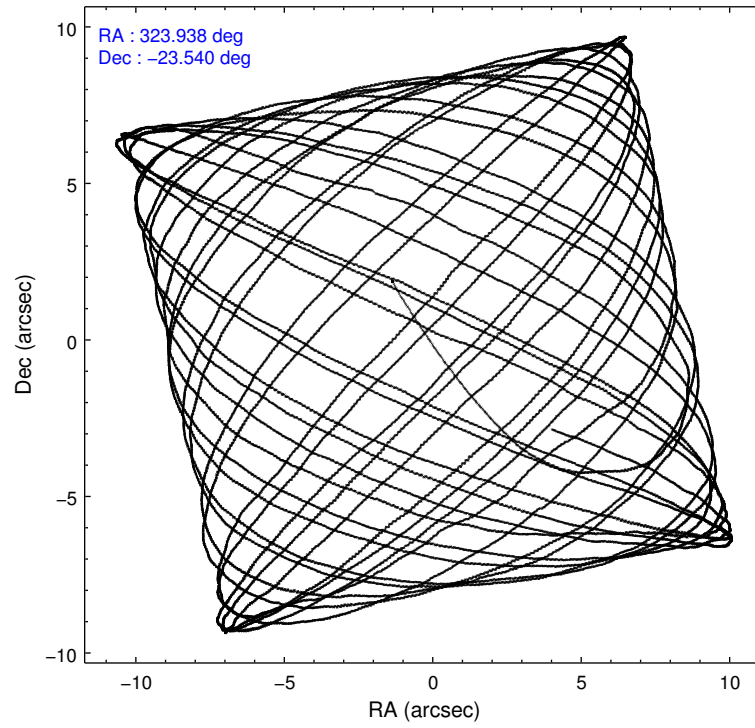
2.1.4 Events

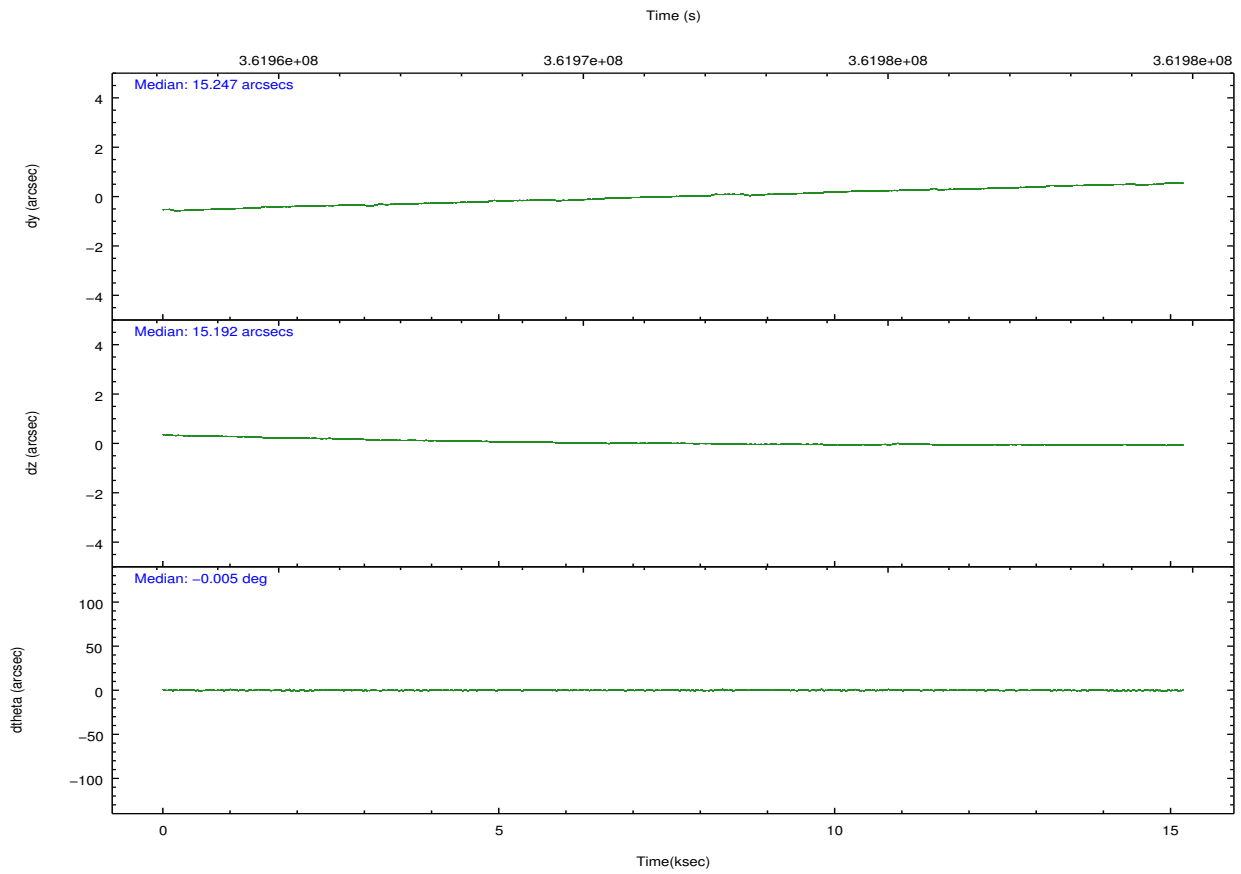
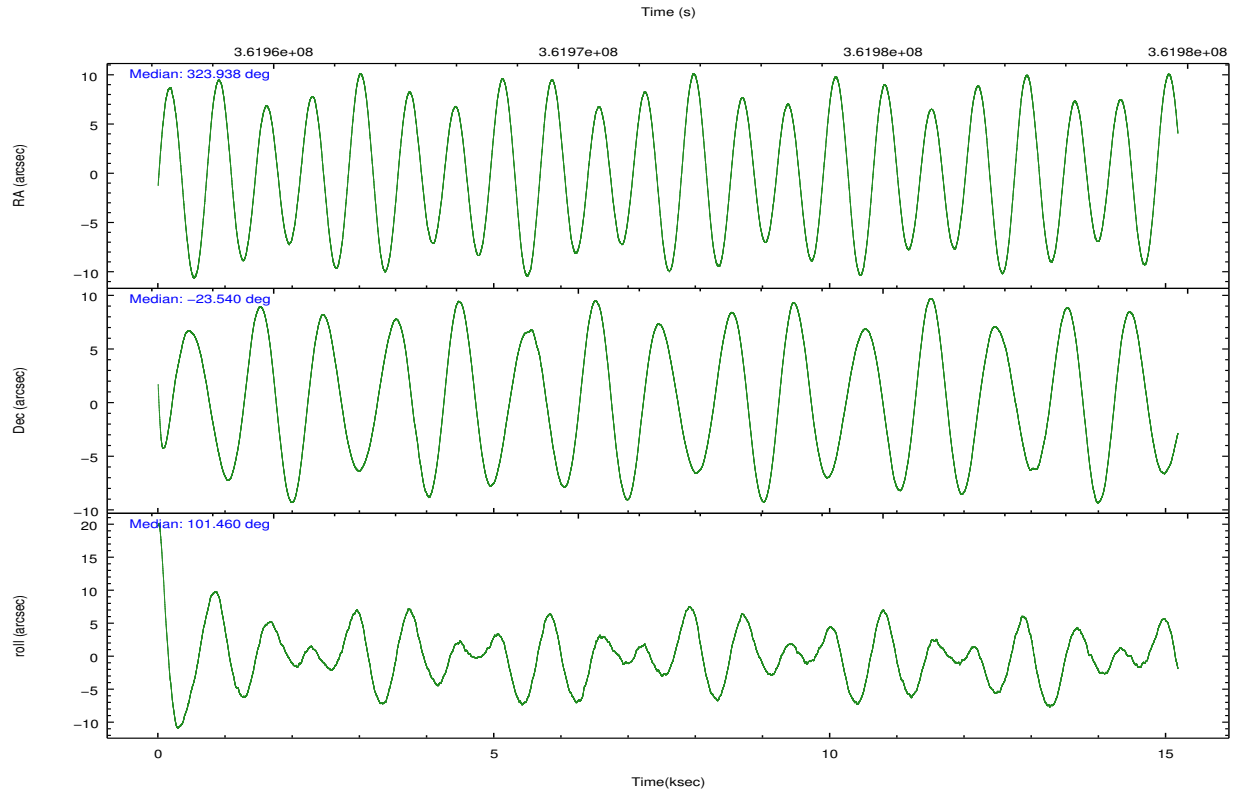
	ccd 2	ccd 3	ccd 5	ccd 6	ccd 7	ccd 8		ccd 2	ccd 3	ccd 5	ccd 6	ccd 7	ccd 8
level 1 events	140254	126877	175154	128513	126460	158246	grade 0 events	4869	4335	12967	4879	6381	11183
rejected events	127992	115573	87564	115906	67611	120424		3%	3%	7%	3%	5%	7%
rejected %	91%	91%	49%	90%	53%	76%	grade 1 events	74	66	412	77	211	110
								0%	0%	0%	0%	0%	0%
							grade 2 events	3168	2610	26896	2882	13273	9554
								2%	2%	15%	2%	10%	6%
							grade 3 events	1259	1352	4118	1404	5702	4426
								0%	1%	2%	1%	4%	2%
							grade 4 events	1341	1309	3562	1345	5627	4000
								0%	1%	2%	1%	4%	2%
							grade 5 events	3781	4530	16368	4500	13368	6807
								2%	3%	9%	3%	10%	4%
							grade 6 events	2251	2304	44581	2718	30881	10410
								1%	1%	25%	2%	24%	6%
							grade 7 events	123511	110371	66250	110708	51017	111756
								88%	86%	37%	86%	40%	70%

2.2 Compared Parameters

Parameter	Planned	Actual	Parameter	Planned	Actual
Instrument	ACIS	ACIS	Obspar format version number	7	7
Detector	ACIS-235678	ACIS-235678	Obspar file type	PREDICTED	ACTUAL
Grating	NONE	NONE	Obspar update status	NONE	UPDATED
Data mode	VFAINT	VFAINT	CCD I0 on	N	N
Observation mode	POINTING	POINTING	CCD I1 on	N	N
[deg] Pointing RA	323.957691	323.937662579969	CCD I2 on	O1	Y
[deg] Pointing Dec	-23.559679	-23.53944270902411	CCD I3 on	O2	Y
[deg] Pointing Roll	101.317417	101.4660602069984	CCD S0 on	N	N
[mm] SIM focus pos	-0.684267	-0.6828225247311905	CCD S1 on	O3	Y
[mm] SIM defocus	0	0.001444936568705701	CCD S2 on	O4	Y
[mm] SIM translation stage pos	-190.132523	-190.1425803651734	CCD S3 on	Y	Y
[mm] SIM translation stage offset	0	0.01005778216563158	CCD S4 on	O5	Y
[s] Observation start time (MET)	361964056.184000	361962595.65863	CCD S5 on	N	N
Observation start date	2009-06-21T09:33:10	2009-06-21T09:09:55	Number of optional ACIS chips dropped	0	0
[s] Observation end time (MET)	361979056.184000	361979495.34697	On-chip summing requested	N	N
Observation end date	2009-06-21T13:43:10	2009-06-21T13:51:35	Subarray requested	NONE	NONE
Read mode	TIMED	TIMED	Alternating exposures requested	N	N
			[s] Primary exposure time	0.000000	3.2

2.3 Aspect



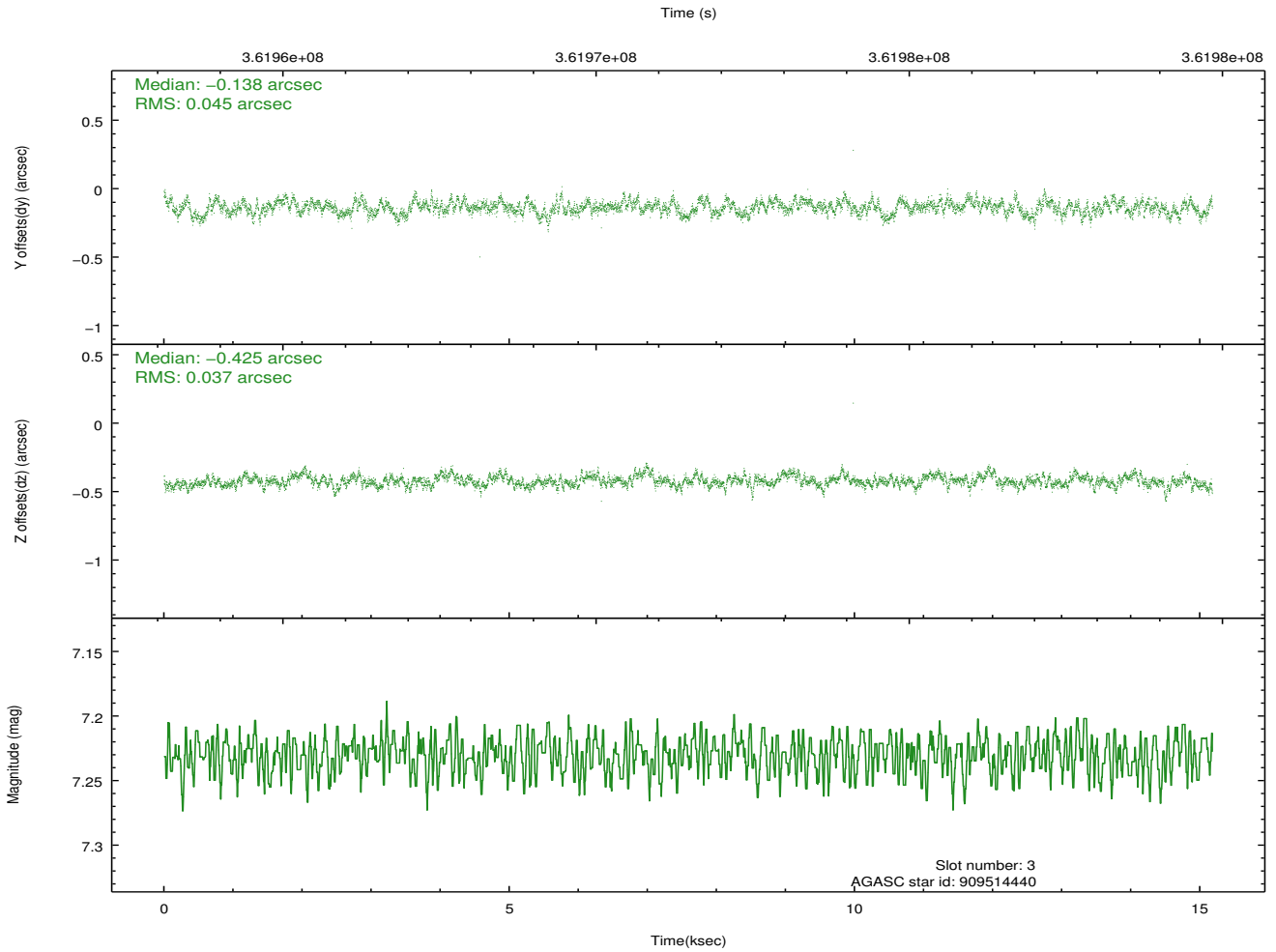
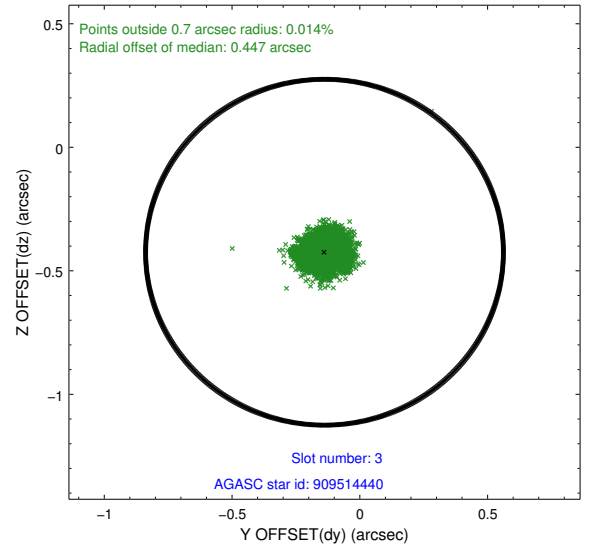
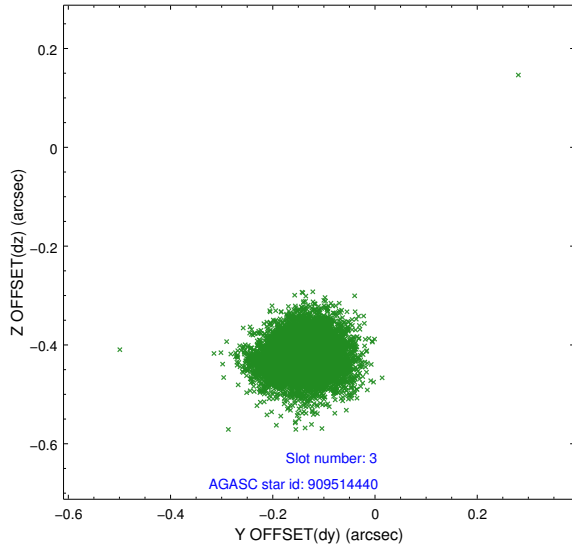


Slot Statistics

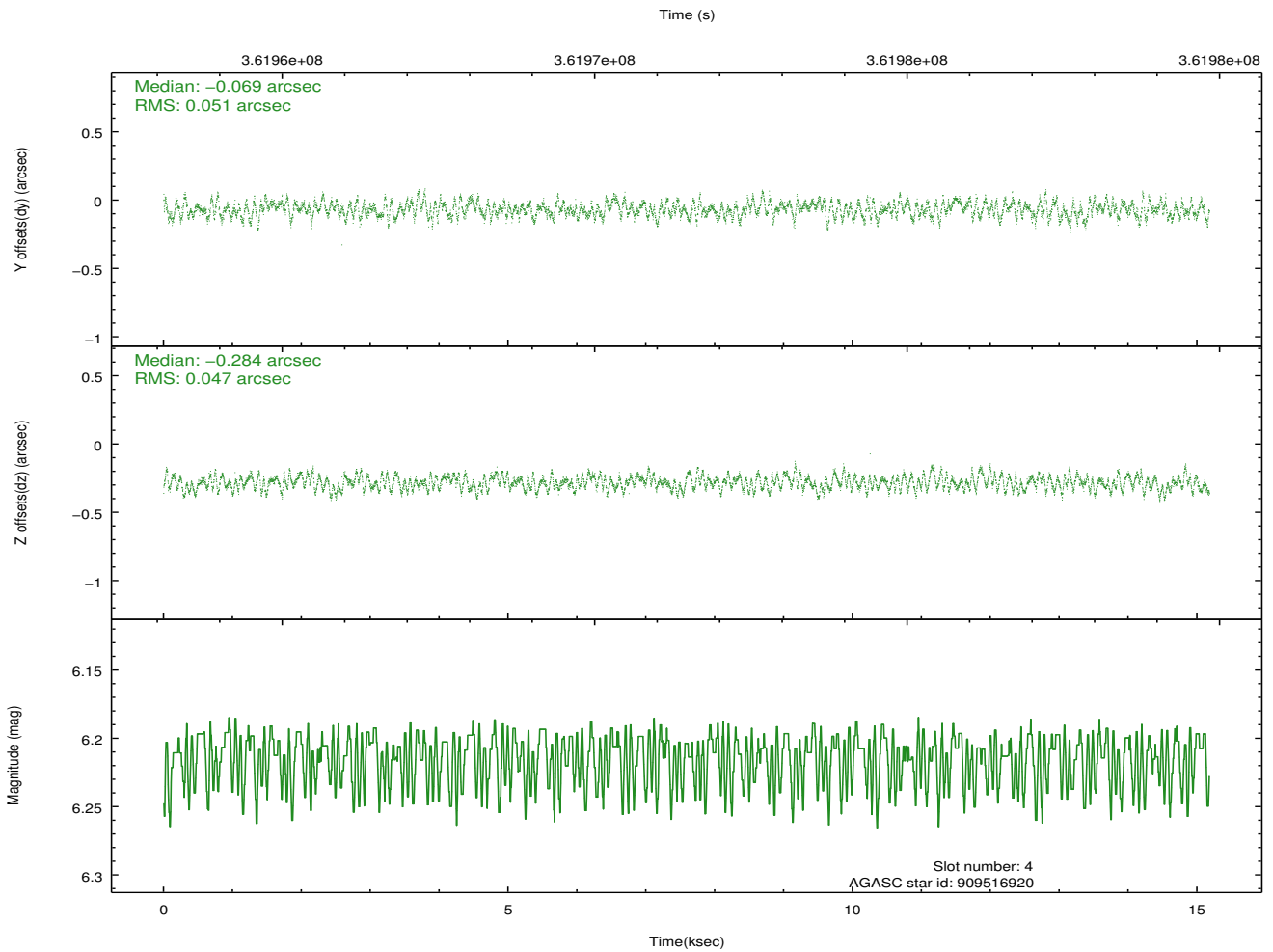
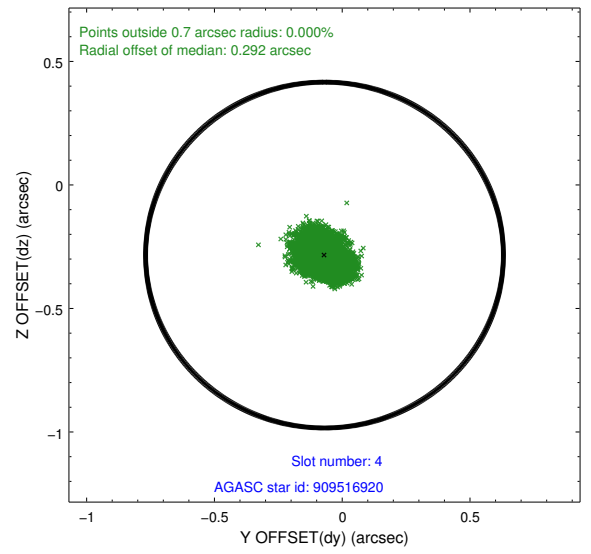
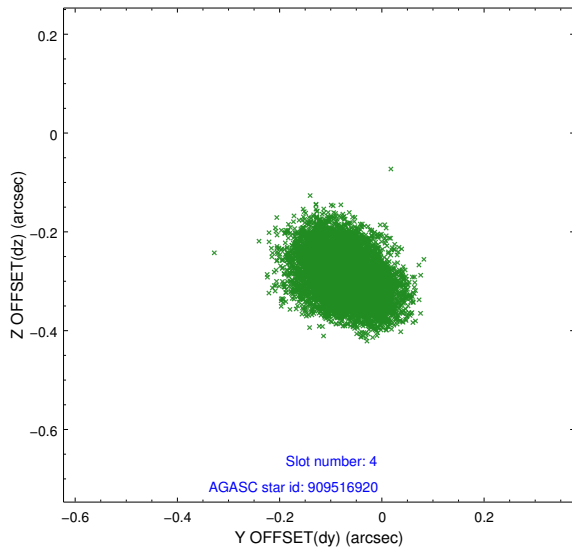
slot	status	id	mag	n_pts	med_dy	med_dz	dr1	dr2	ra	dec	mean_y	mean_z
0	FID	ACIS-S-2	6.89	3703	-0.094	-0.021	0.009	0.014	0.000000	0.000000	-768.30	-1736.60
1	FID	ACIS-S-4	6.98	3703	0.195	0.051	0.009	0.024	0.000000	0.000000	2145.11	171.67
2	FID	ACIS-S-5	7.00	3702	-0.132	-0.021	0.012	0.027	0.000000	0.000000	-1820.81	165.57
3	GUIDE	909514440	7.23	7405	-0.138	-0.425	0.062	0.100	323.844785	-23.117945	1632.81	54.48
4	GUIDE	909516920	6.21	7405	-0.069	-0.284	0.075	0.117	323.816482	-23.454314	463.47	382.18
5	GUIDE	909641616	8.80	7397	0.043	0.324	0.082	0.133	324.489766	-23.068367	1385.68	-2073.45
6	GUIDE	909643832	8.05	7402	0.190	0.127	0.075	0.114	324.425965	-23.695091	-782.61	-1417.76
7	GUIDE	909645816	9.85	7384	-0.031	0.262	0.152	0.240	324.602274	-23.293432	517.46	-2276.75

2.4 Star Slots

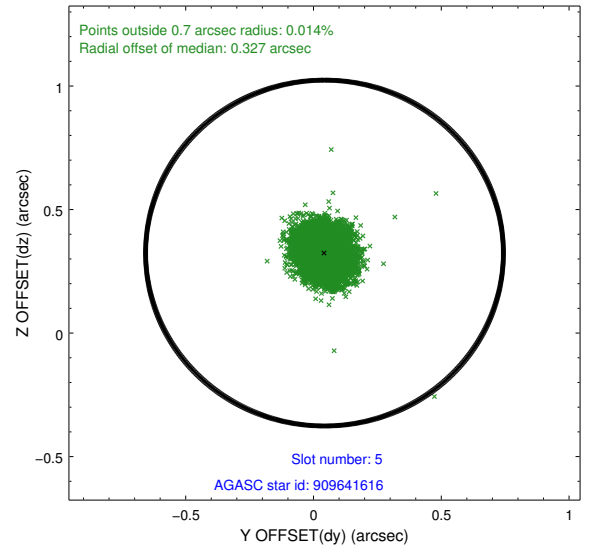
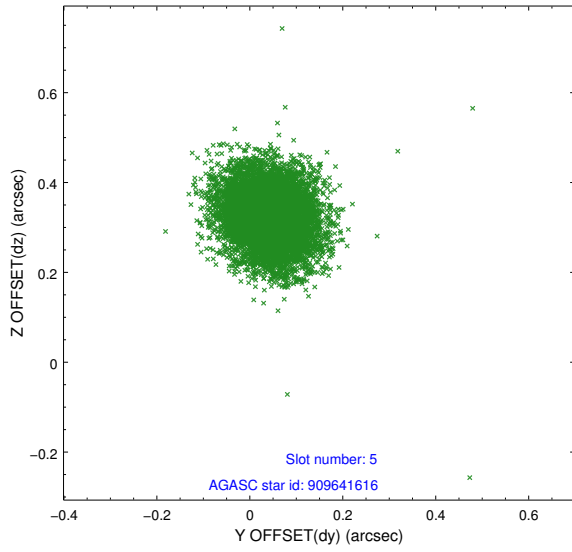
2.4.1 Slot 3



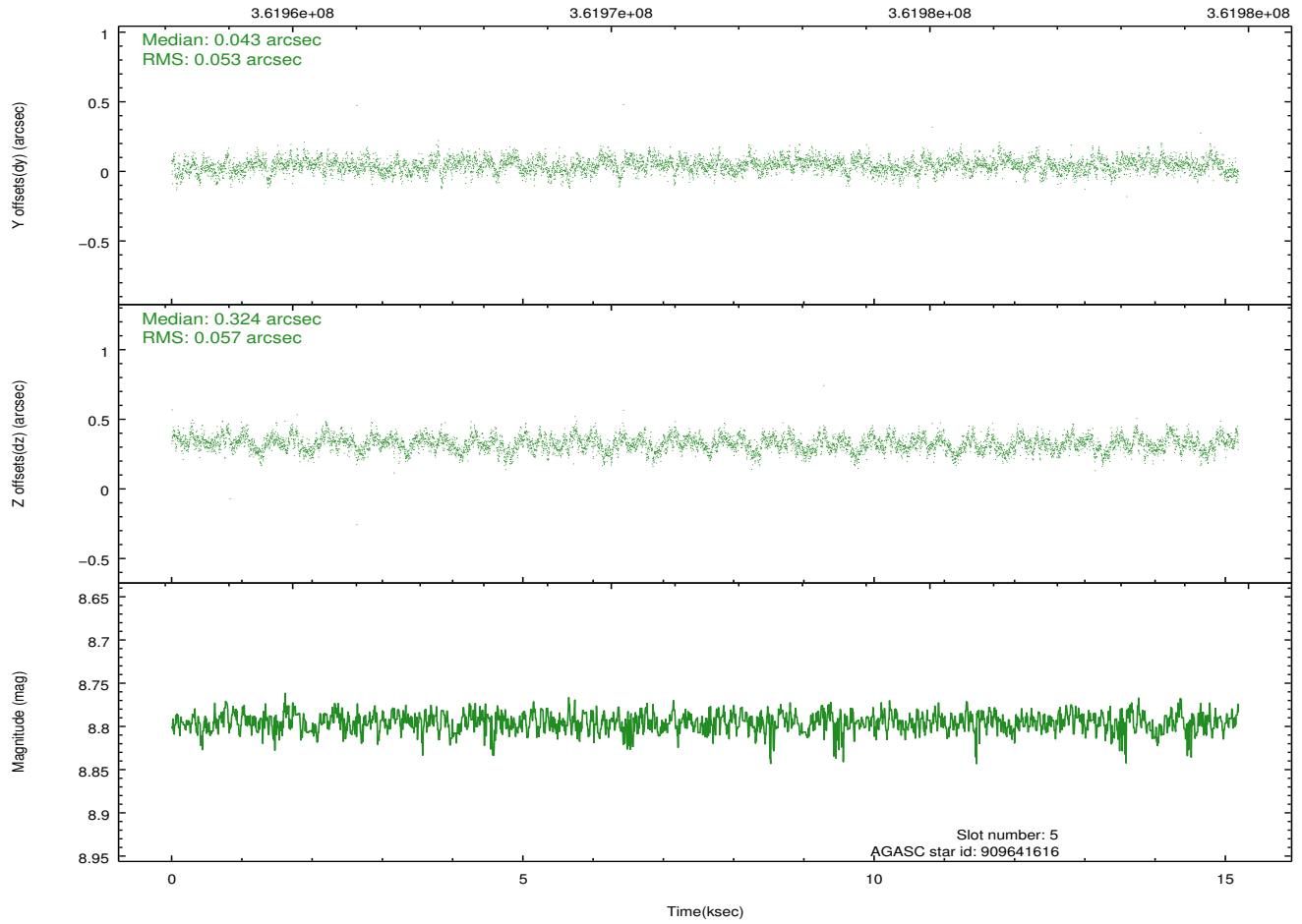
2.4.2 Slot 4



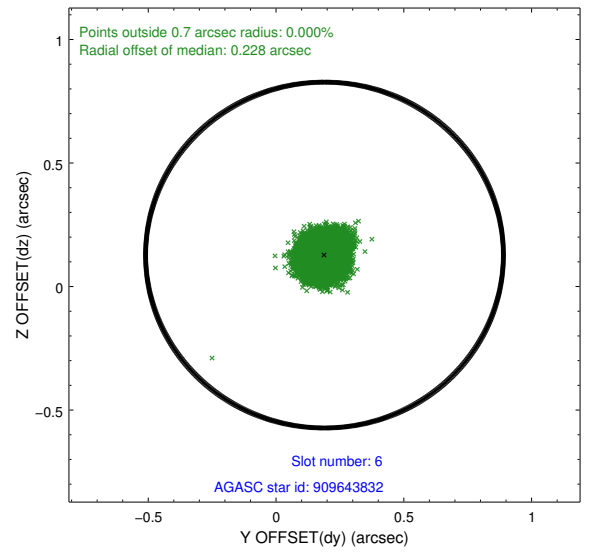
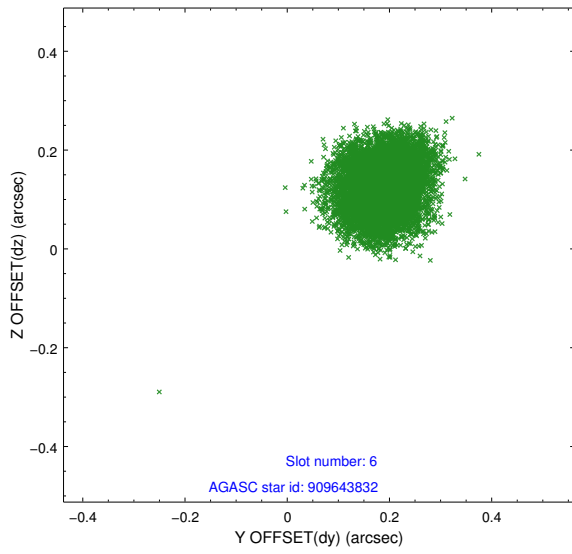
2.4.3 Slot 5



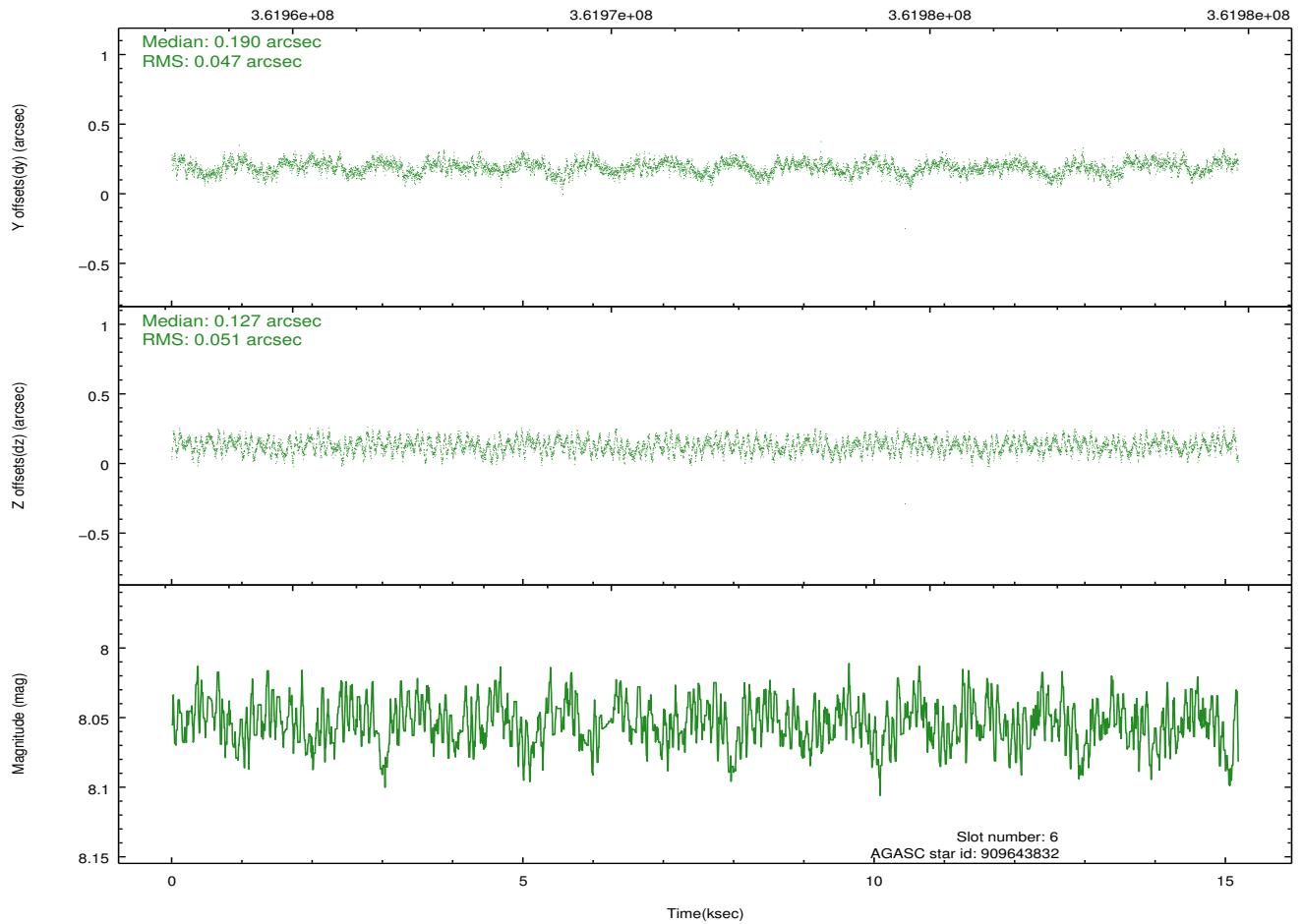
Time (s)



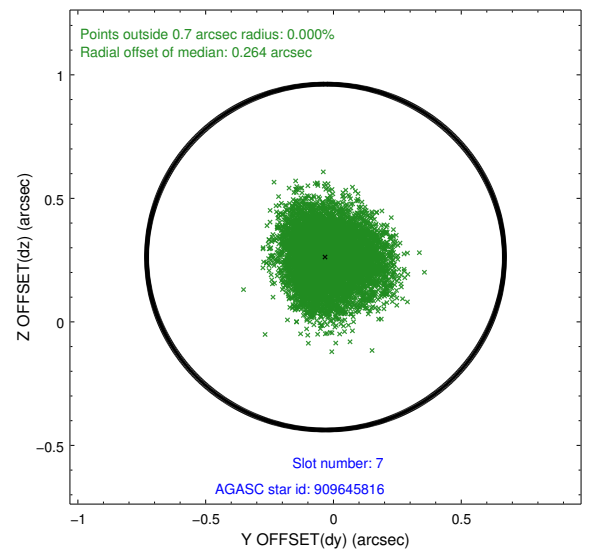
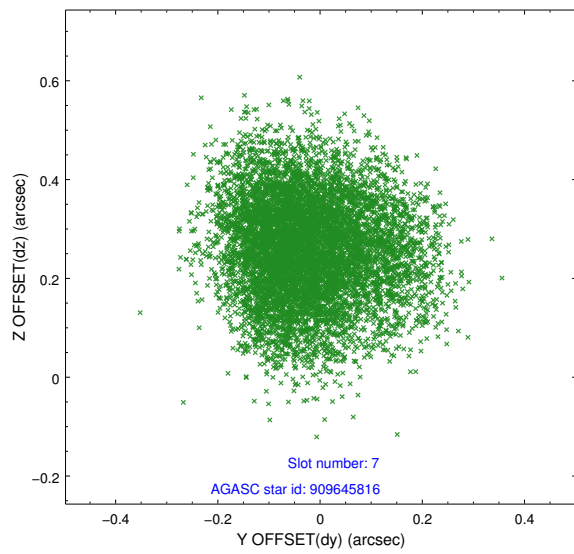
2.4.4 Slot 6



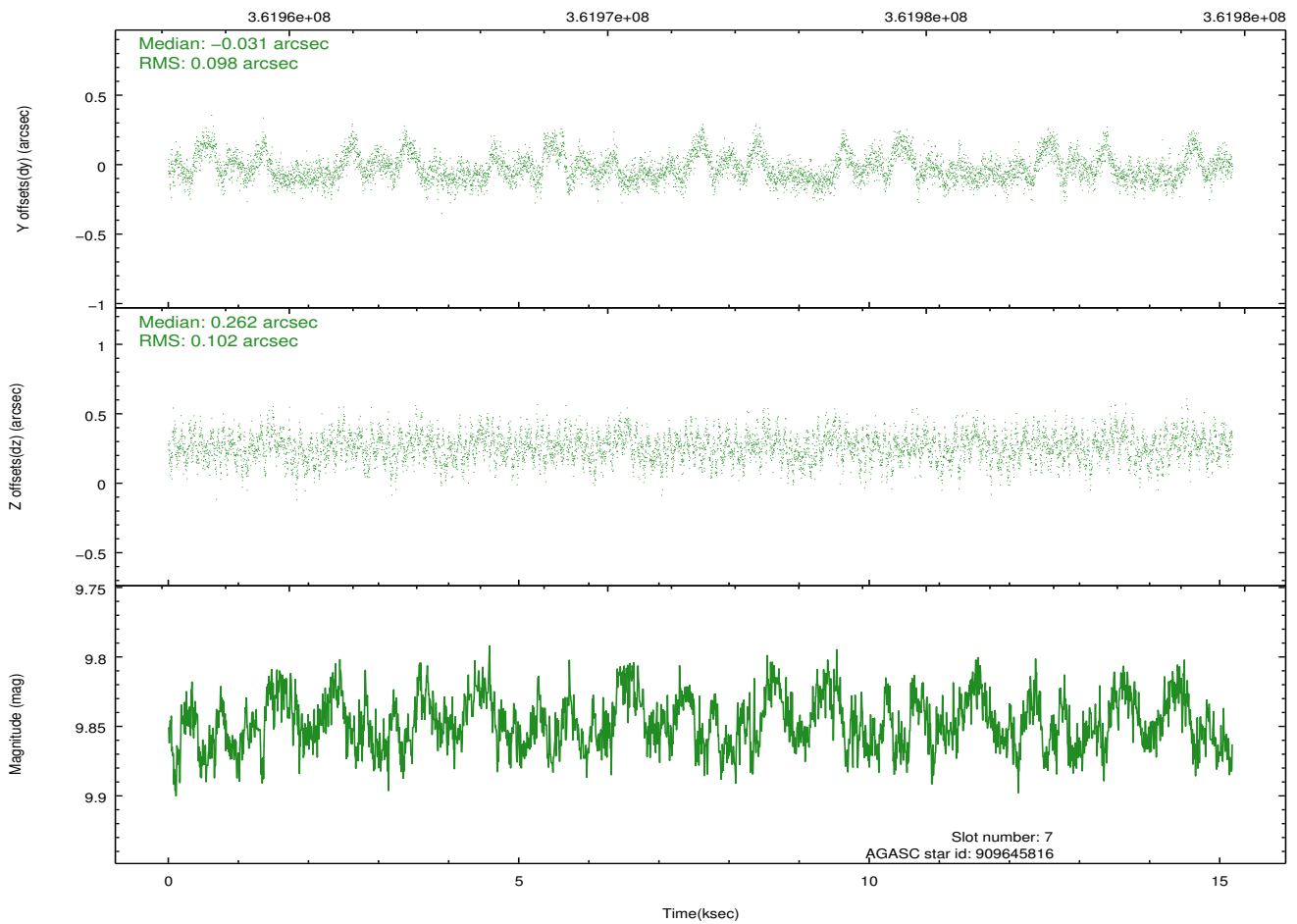
Time (s)



2.4.5 Slot 7

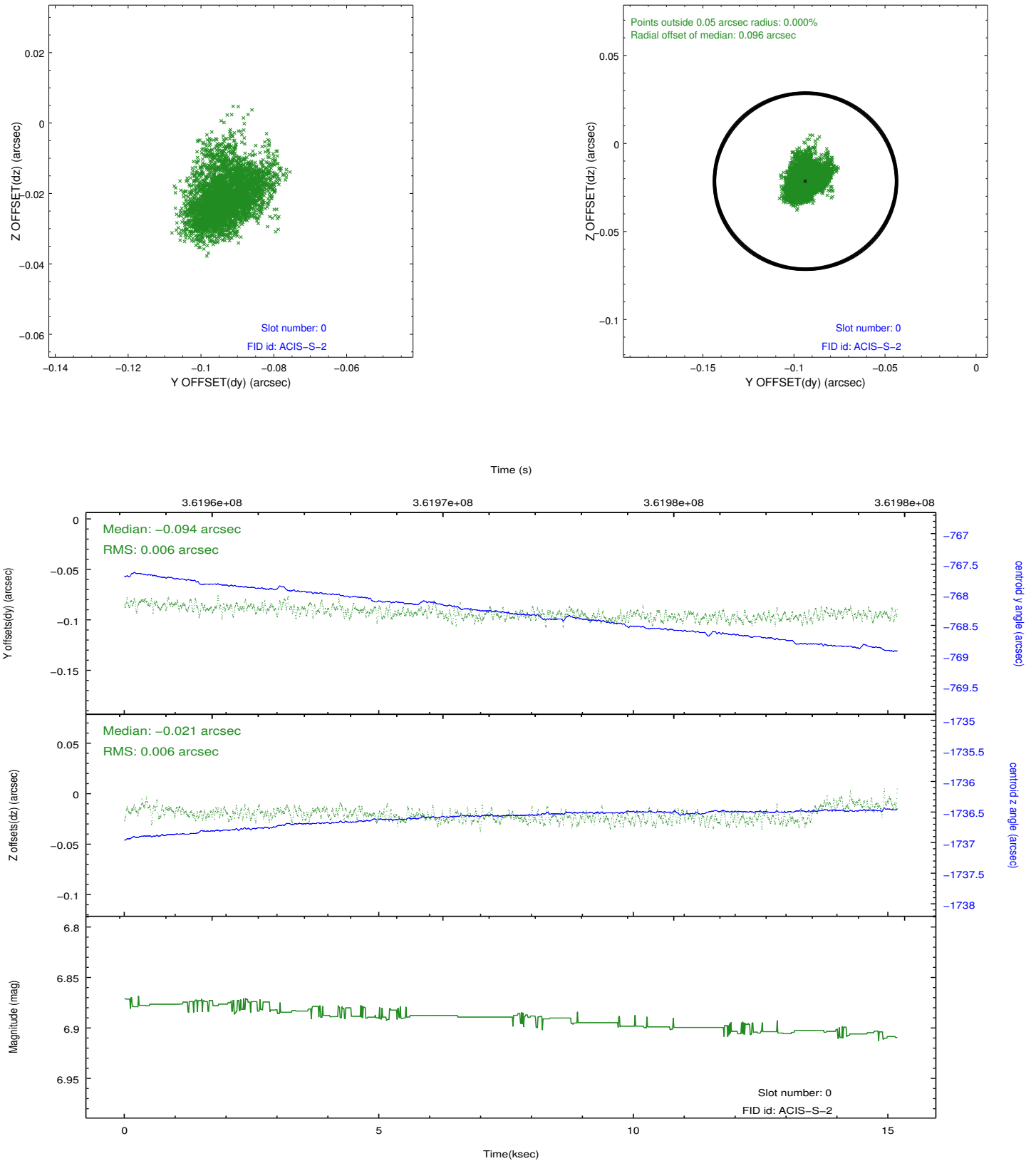


Time (s)

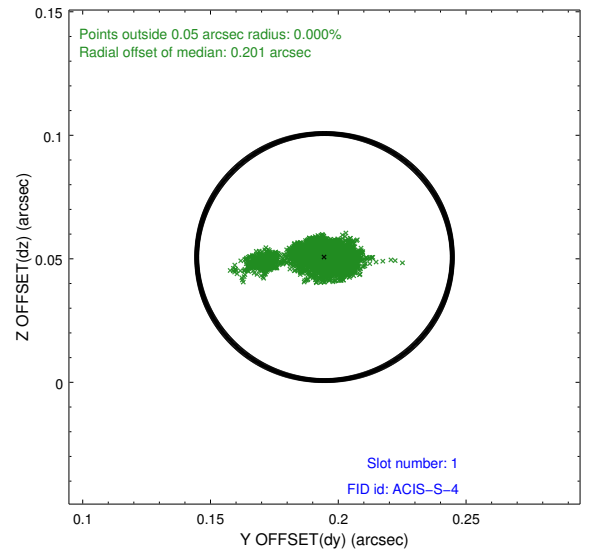
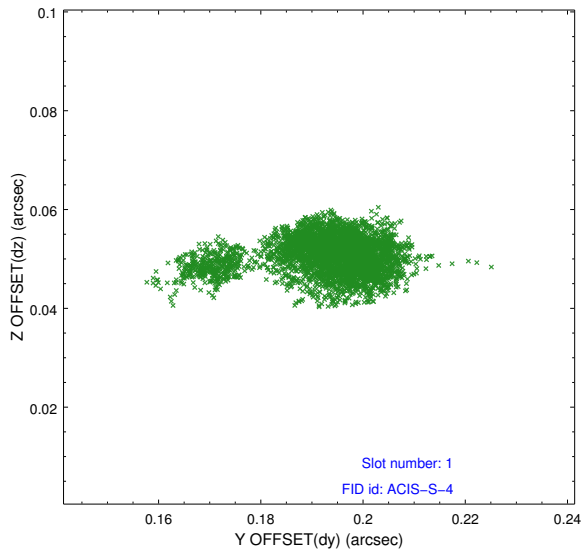


2.5 FID Slots

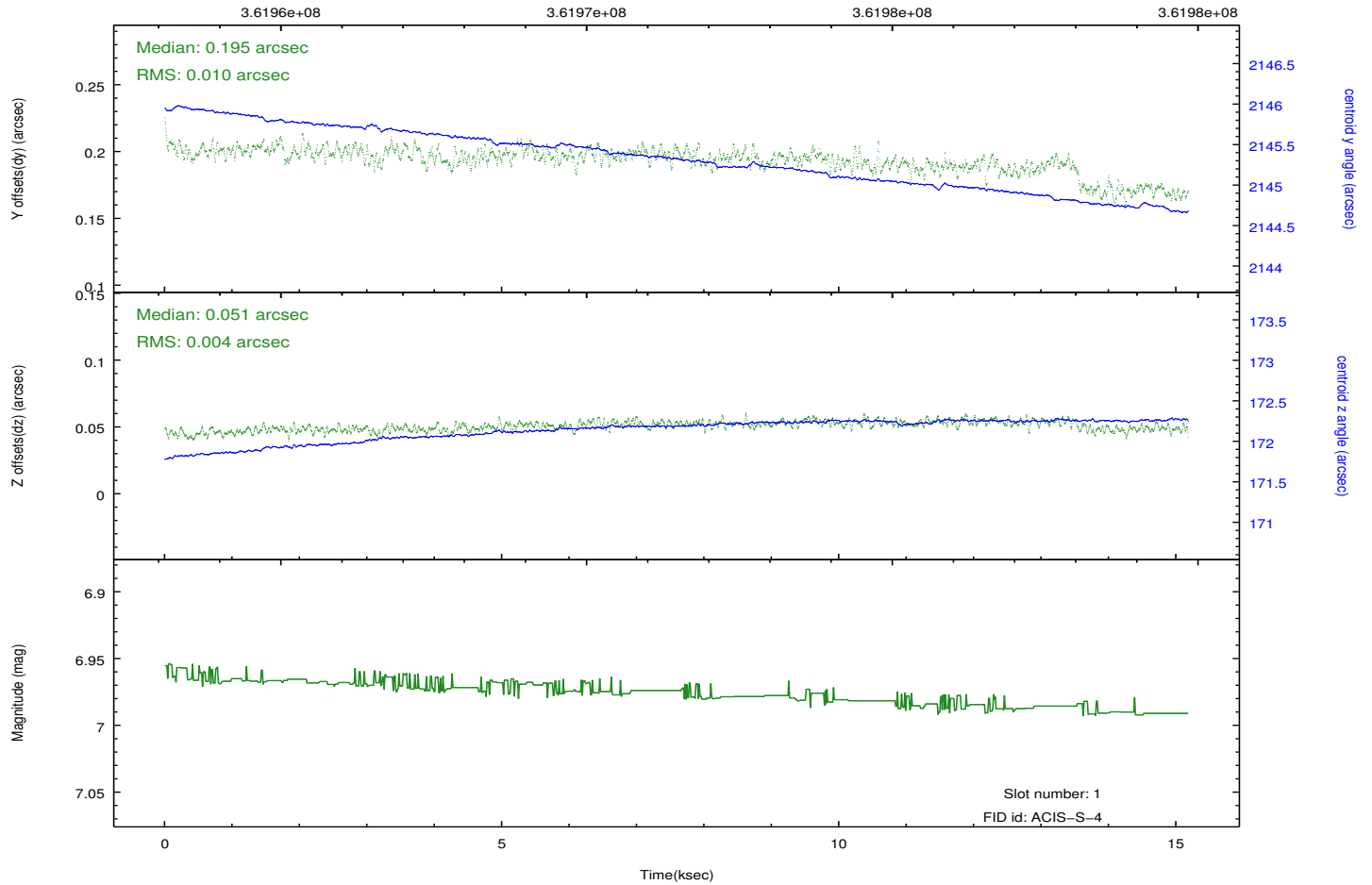
2.5.1 Slot 0



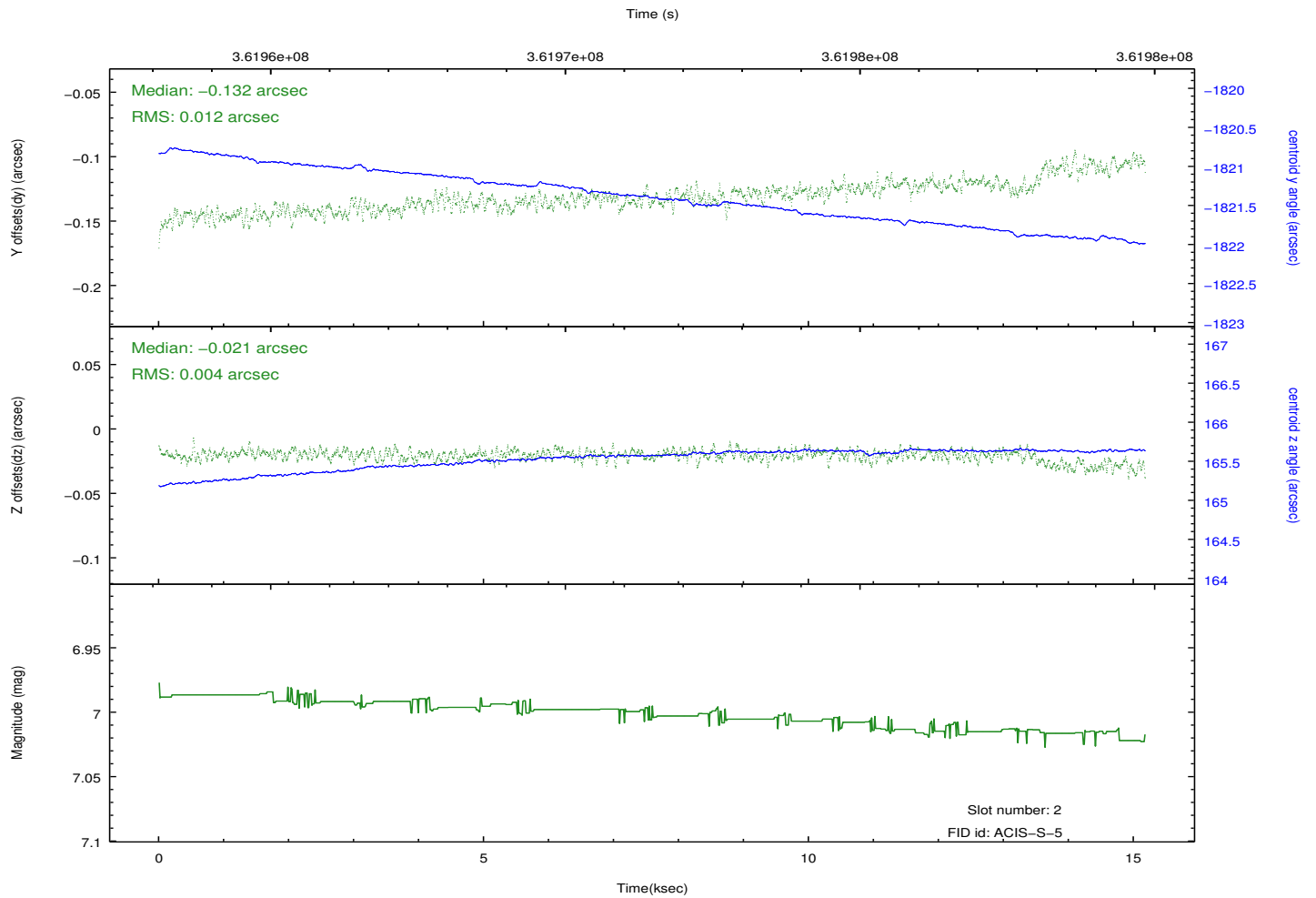
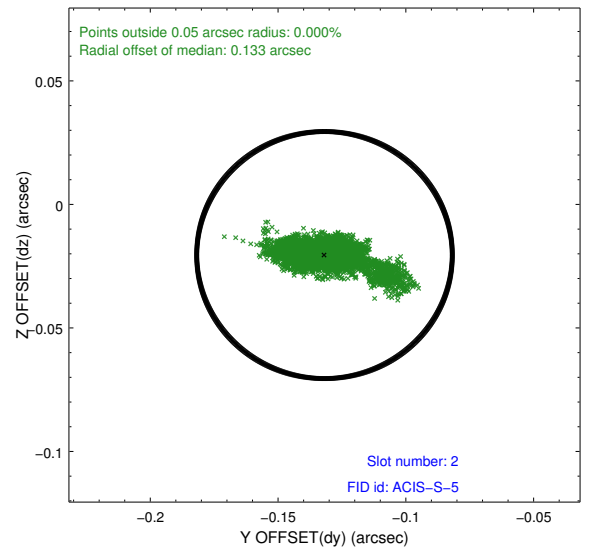
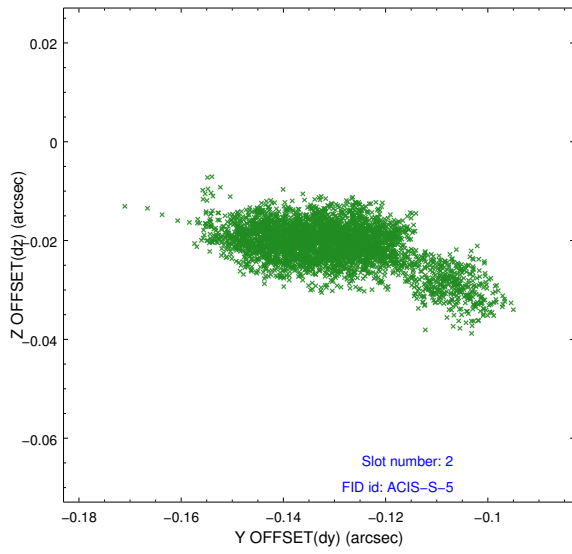
2.5.2 Slot 1



Time (s)



2.5.3 Slot 2



A Summary

A.1 Status

V&V Scientist	Jen Lauer
V&V Date (YYYY-MM-DD)	2012.06.12
V&V Edition	1
V&V Disposition and Status	OK
V&V Charge Time	15.1743999

A.2 Comments