

V&V Reference Report

L2 ASCDS Version : 8.4.4

Observation 10440 - L2 Version 2
Chandra X-Ray Center

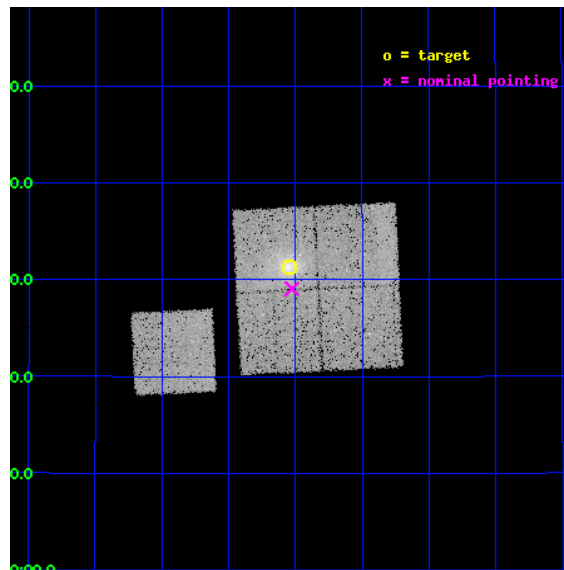
L2 Processing Date : May 24 2012

Contents

1	Front	2
2	OBI	3
2.1	OBI	3
2.1.1	Images	3
2.1.2	Bias	3
2.1.3	Parameters	4
2.1.4	Events	4
2.2	Compared Parameters	5
2.3	Aspect	6
2.4	Star Slots	9
2.4.1	Slot 3	9
2.4.2	Slot 4	10
2.4.3	Slot 5	11
2.4.4	Slot 6	12
2.4.5	Slot 7	13
2.5	FID Slots	14
2.5.1	Slot 0	14
2.5.2	Slot 1	15
2.5.3	Slot 2	16
A	Summary	17
A.1	Status	17
A.2	Comments	17

1 Front

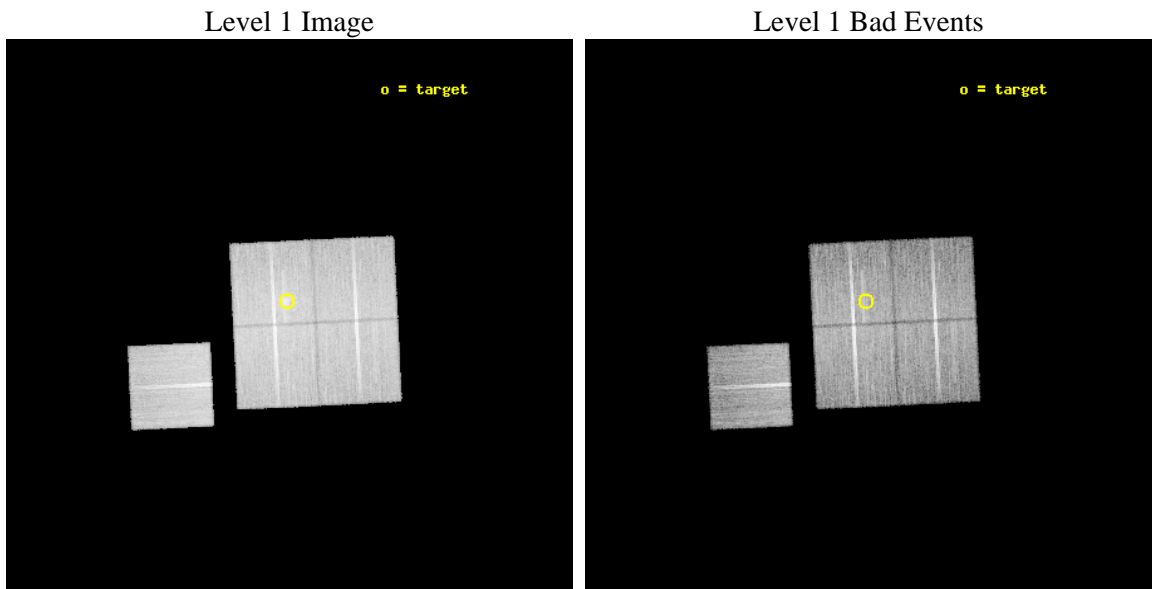
seq_num	800801	Sequence number
obs_id	10440	Observation id
title	LoCuSS: An Unbiased Multi-wavelength Study of the Cluster Quadchotomy - Gas Cooling and Cluster Merging at z=0.2	Proposal title
observer	Dr Graham Smith	Principal investigator
object	RX J0142.0+2131	Source name
dtcycle	0	
cycle	P	events from which exps? Prim/Second/Both
ra_targ	25.510833	Observer's specified target RA [deg]
dec_targ	21.522	Observer's specified target Dec [deg]
ra_nom	25.50682675106	Nominal RA [deg]
dec_nom	21.4844215491	Nominal Dec [deg]
roll_nom	267.21017371582	Nominal Roll [deg]
revision	2	Processing version of data
ontime	20184.059214473	Sum of GTIs [s]
livetime	19920.339621547	Livetime [s]
ontime0	20180.918204308	Sum of GTIs [s]
ontime1	20184.059145033	Sum of GTIs [s]
ontime2	20180.91821456	Sum of GTIs [s]
ontime3	20184.059214473	Sum of GTIs [s]
ontime6	20187.200155258	Sum of GTIs [s]
l2events	80001	Number of level 2 events



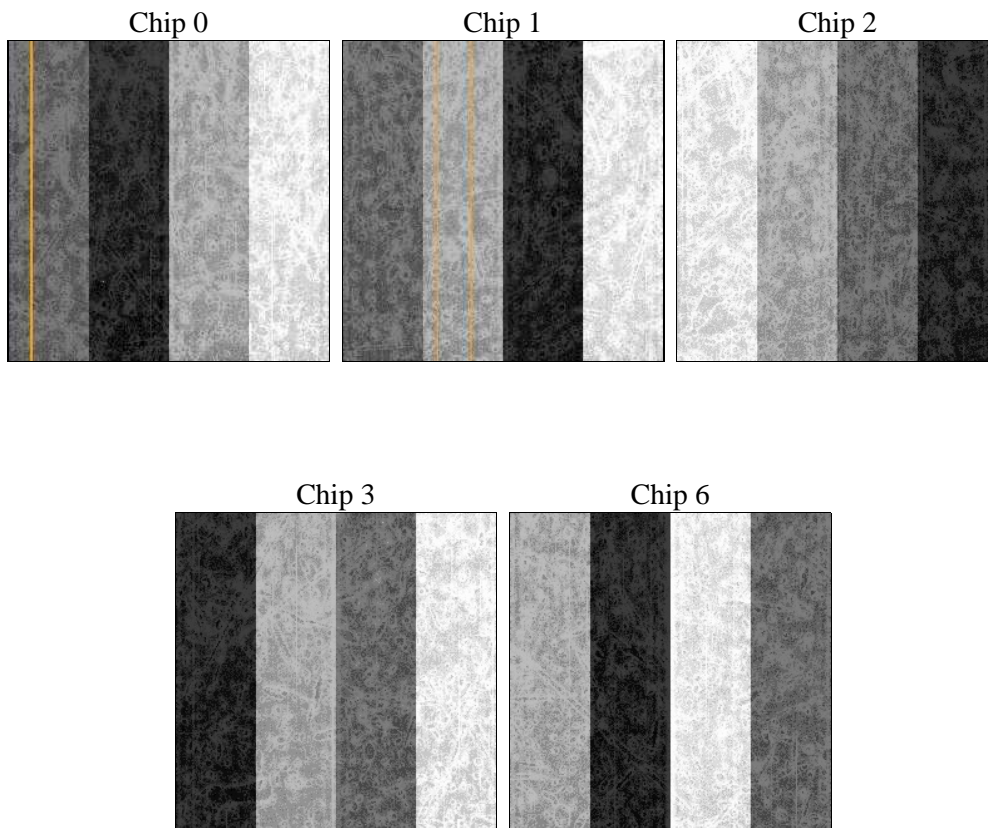
2 OBI

2.1 OBI

2.1.1 Images



2.1.2 Bias



2.1.3 Parameters

obi_num	0	Obi number	sched_exp_time	20000.000000	[s] Scheduled observation exposure time
ascdsver	8.4.4	Processing system revision	ontime	20184.059214473	Sum of GTIs [s]
caldbver	4.4.9	 	ontime0	20180.918204308	Sum of GTIs [s]
date	2012-05-24T02:31:26	Date and time of file creation	ontime1	20184.059145033	Sum of GTIs [s]
revision	2	Processing version of data	ontime2	20180.91821456	Sum of GTIs [s]
			ontime3	20184.059214473	Sum of GTIs [s]
			ontime6	20187.200155258	Sum of GTIs [s]
			l1events	894526	Number of level 1 events

2.1.4 Events

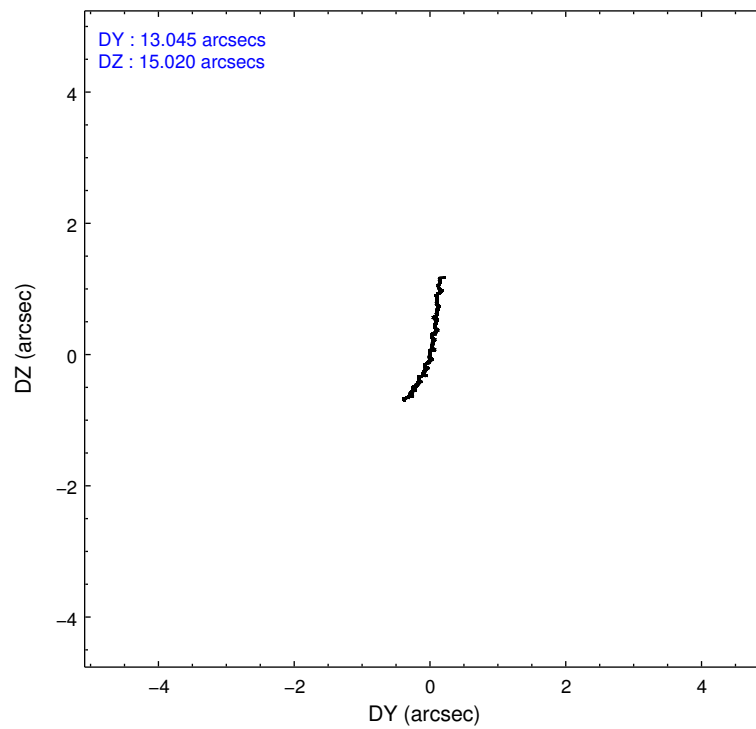
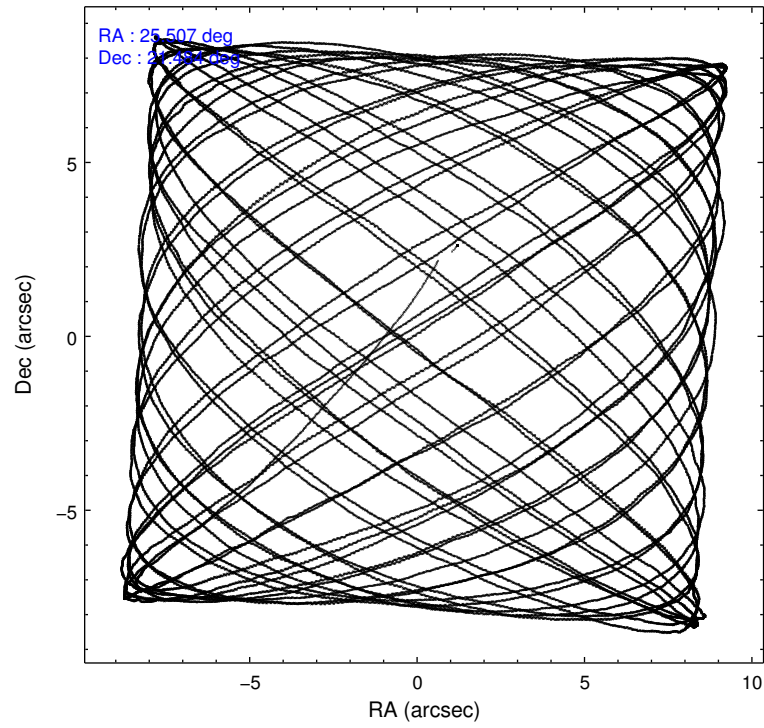
	ccd 0	ccd 1	ccd 2	ccd 3	ccd 6
level 1 events	166368	164982	190659	190730	181787
rejected events	149597	145805	173753	166237	164267
rejected %	89%	88%	91%	87%	90%

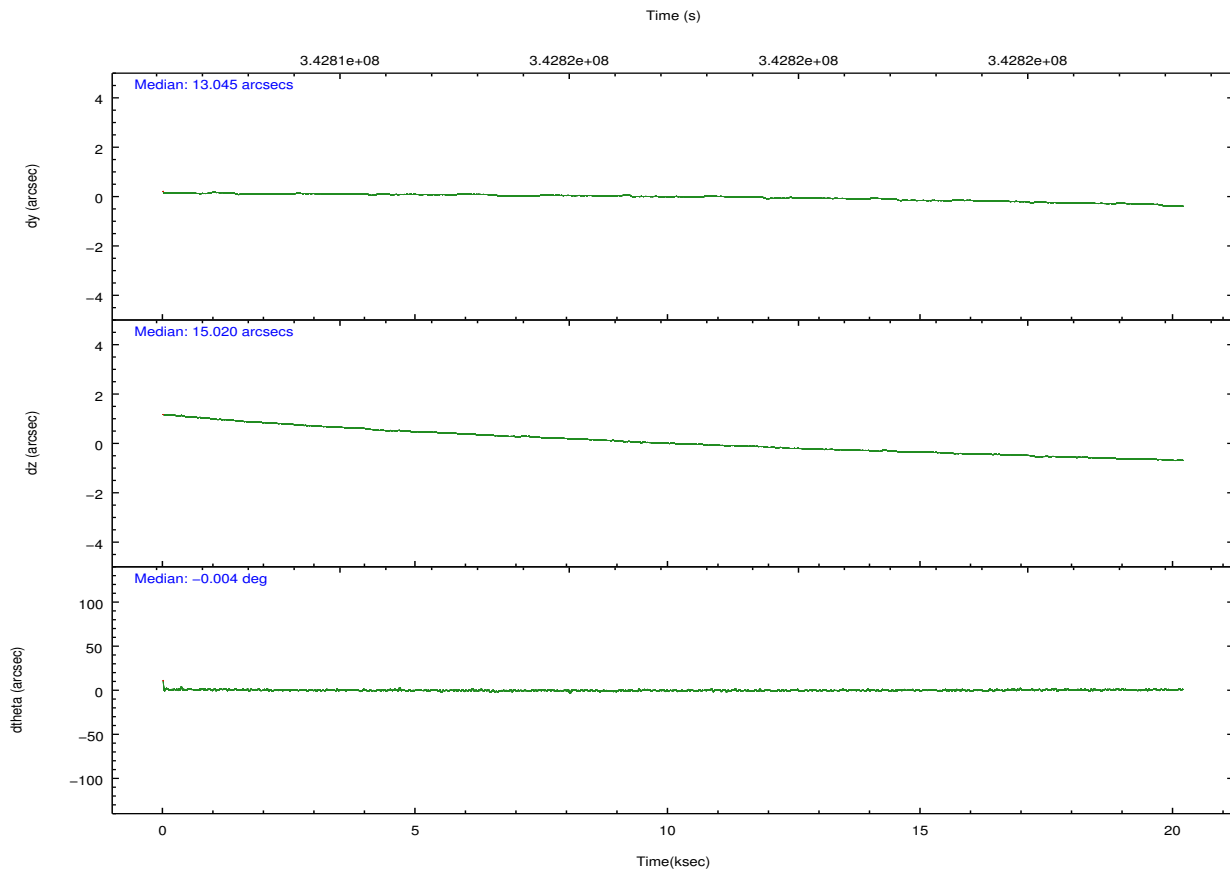
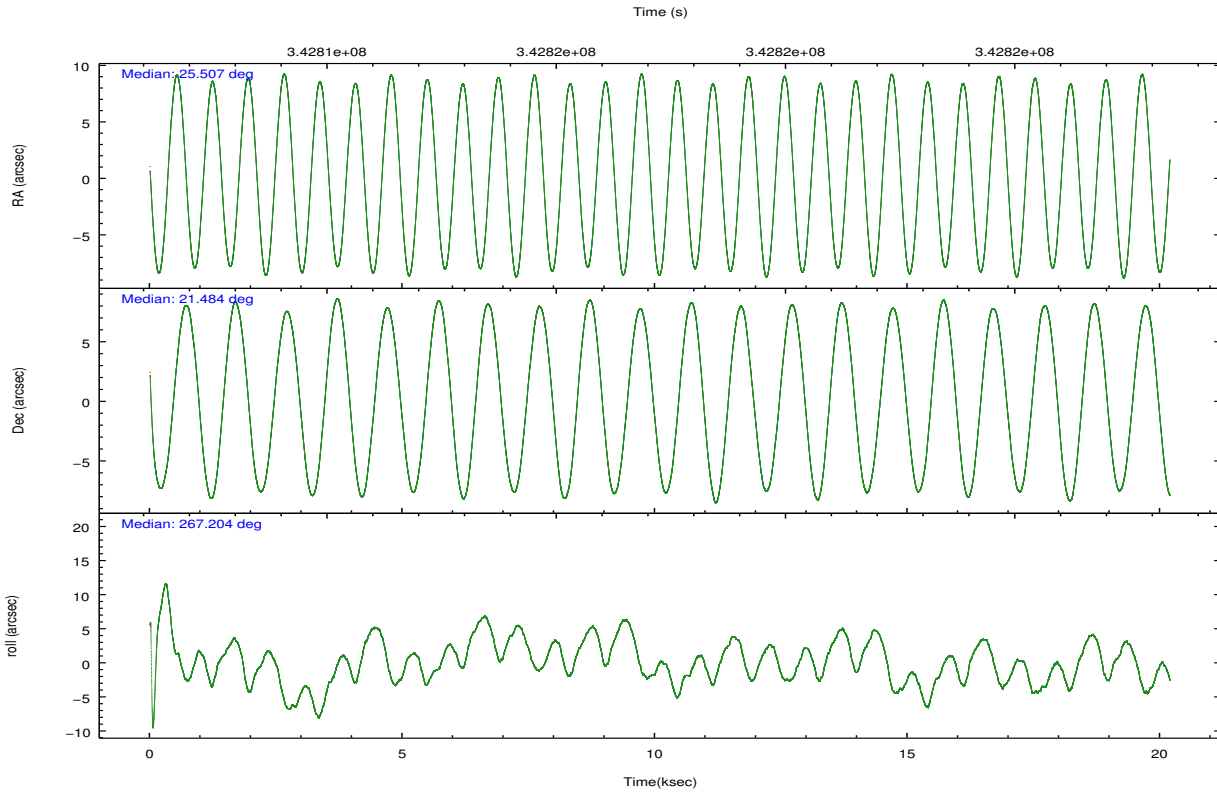
	ccd 0	ccd 1	ccd 2	ccd 3	ccd 6
grade 0 events	6179	7474	6486	12912	6553
	3%	4%	3%	6%	3%
grade 1 events	93	88	106	169	86
	0%	0%	0%	0%	0%
grade 2 events	4326	4740	4467	4720	4143
	2%	2%	2%	2%	2%
grade 3 events	2034	2150	1878	2081	1984
	1%	1%	0%	1%	1%
grade 4 events	1929	2128	1874	2132	1955
	1%	1%	0%	1%	1%
grade 5 events	6433	7034	6239	7517	7204
	3%	4%	3%	3%	3%
grade 6 events	3436	4042	3358	3730	4073
	2%	2%	1%	1%	2%
grade 7 events	141938	137326	166251	157469	155789
	85%	83%	87%	82%	85%

2.2 Compared Parameters

Parameter	Planned	Actual	Parameter	Planned	Actual
Instrument	ACIS	ACIS	Obspar format version number	7	7
Detector	ACIS-01236	ACIS-01236	Obspar file type	PREDICTED	ACTUAL
Grating	NONE	NONE	Obspar update status	NONE	UPDATED
Data mode	VFAINT	VFAINT	Number of optional ACIS chips dropped	0	0
Observation mode	POINTING	POINTING	On-chip summing requested	N	N
[deg] Pointing RA	25.493227	25.5068267510596	Subarray requested	NONE	NONE
[deg] Pointing Dec	21.508833	21.48442154909987	Alternating exposures requested	N	N
[deg] Pointing Roll	267.006452	267.2101737158167	[s] Primary exposure time	0.000000	3.1
[mm] SIM focus pos	-0.782348	-0.7809083437167272			
[mm] SIM defocus	0	0.001439871863259334			
[mm] SIM translation stage pos	-227.592463	-227.5933067819097			
[mm] SIM translation stage offset	-6	-5.999146221020027			
[s] Observation start time (MET)	342807374.184000	342805675.27029			
Observation start date	2008-11-11T16:15:09	2008-11-11T15:47:55			
[s] Observation end time (MET)	342827374.184000	342828635.27142			
Observation end date	2008-11-11T21:48:29	2008-11-11T22:10:35			
Read mode	TIMED	TIMED			

2.3 Aspect



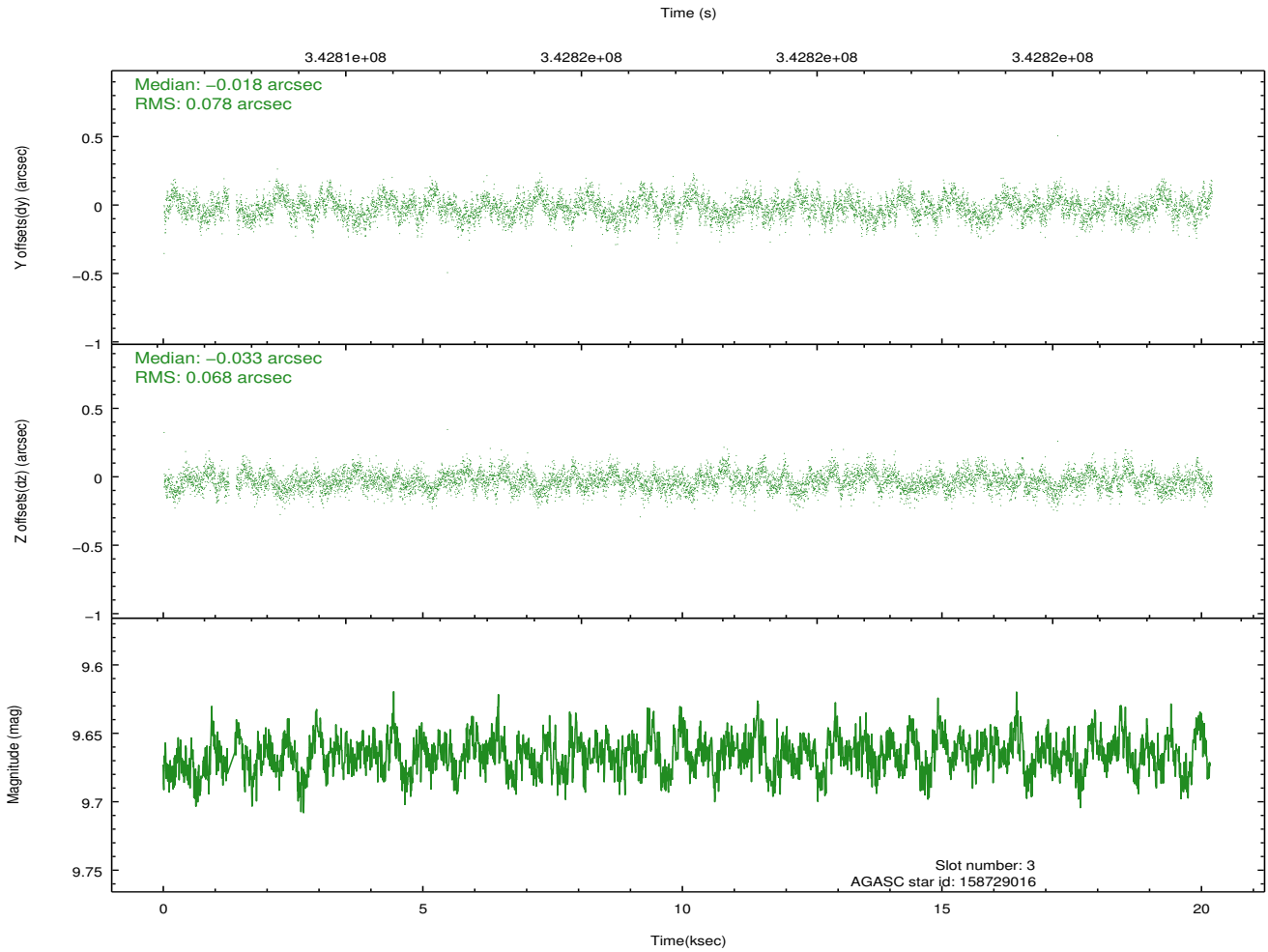
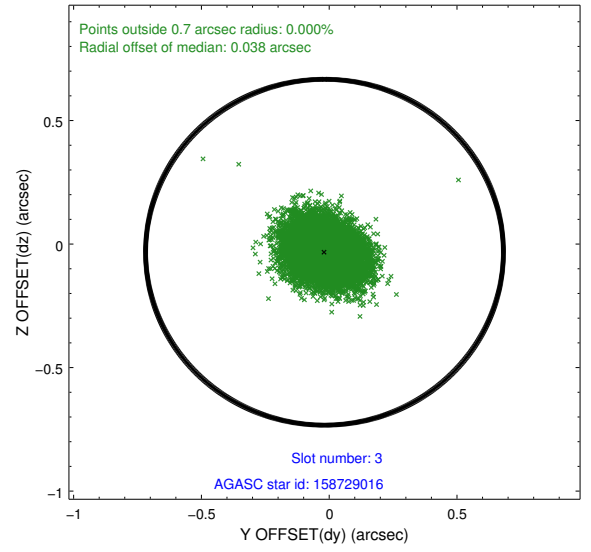
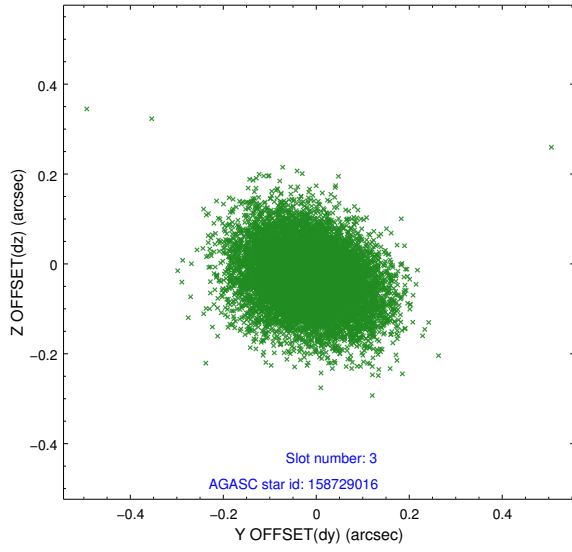


Slot Statistics

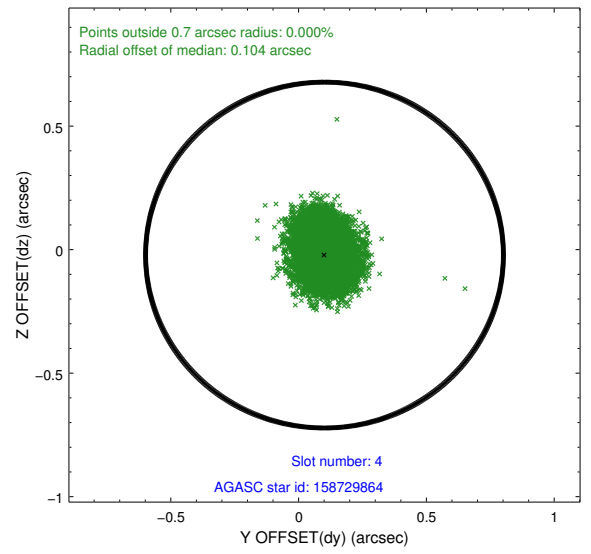
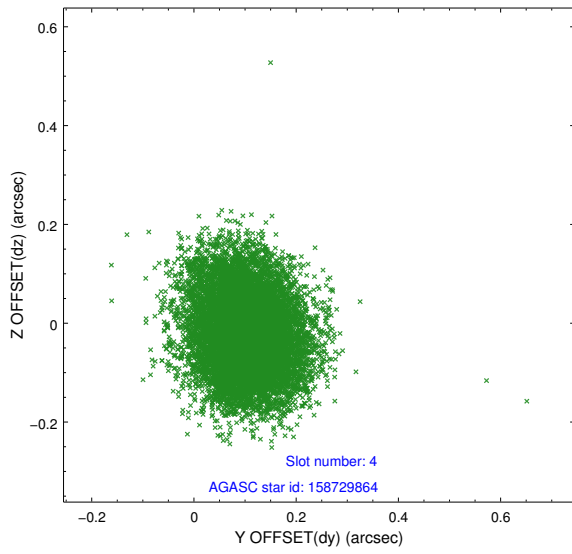
slot	status	id	mag	n_pts	med_dy	med_dz	dr1	dr2	ra	dec	mean_y	mean_z
0	FID	ACIS-I-2	6.96	4925	-0.098	-0.082	0.012	0.019	0.000000	0.000000	-768.17	-967.49
1	FID	ACIS-I-4	6.92	4925	0.144	0.081	0.008	0.013	0.000000	0.000000	2145.97	938.75
2	FID	ACIS-I-5	7.00	4925	-0.147	0.070	0.010	0.016	0.000000	0.000000	-1821.54	935.94
3	GUIDE	158729016	9.67	9764	-0.018	-0.033	0.110	0.177	26.046566	21.024169	1642.07	1948.11
4	GUIDE	158729864	9.43	9838	0.101	-0.022	0.104	0.164	25.676319	21.067333	1555.57	698.60
5	GUIDE	158730584	8.60	9840	-0.009	0.049	0.078	0.123	25.826525	21.500311	-28.70	1116.81
6	GUIDE	158733016	8.97	9843	-0.028	-0.019	0.075	0.119	25.920315	21.005285	1733.41	1528.33
7	GUIDE	158734080	9.75	9837	-0.044	0.022	0.119	0.190	26.013091	21.272822	754.84	1786.02

2.4 Star Slots

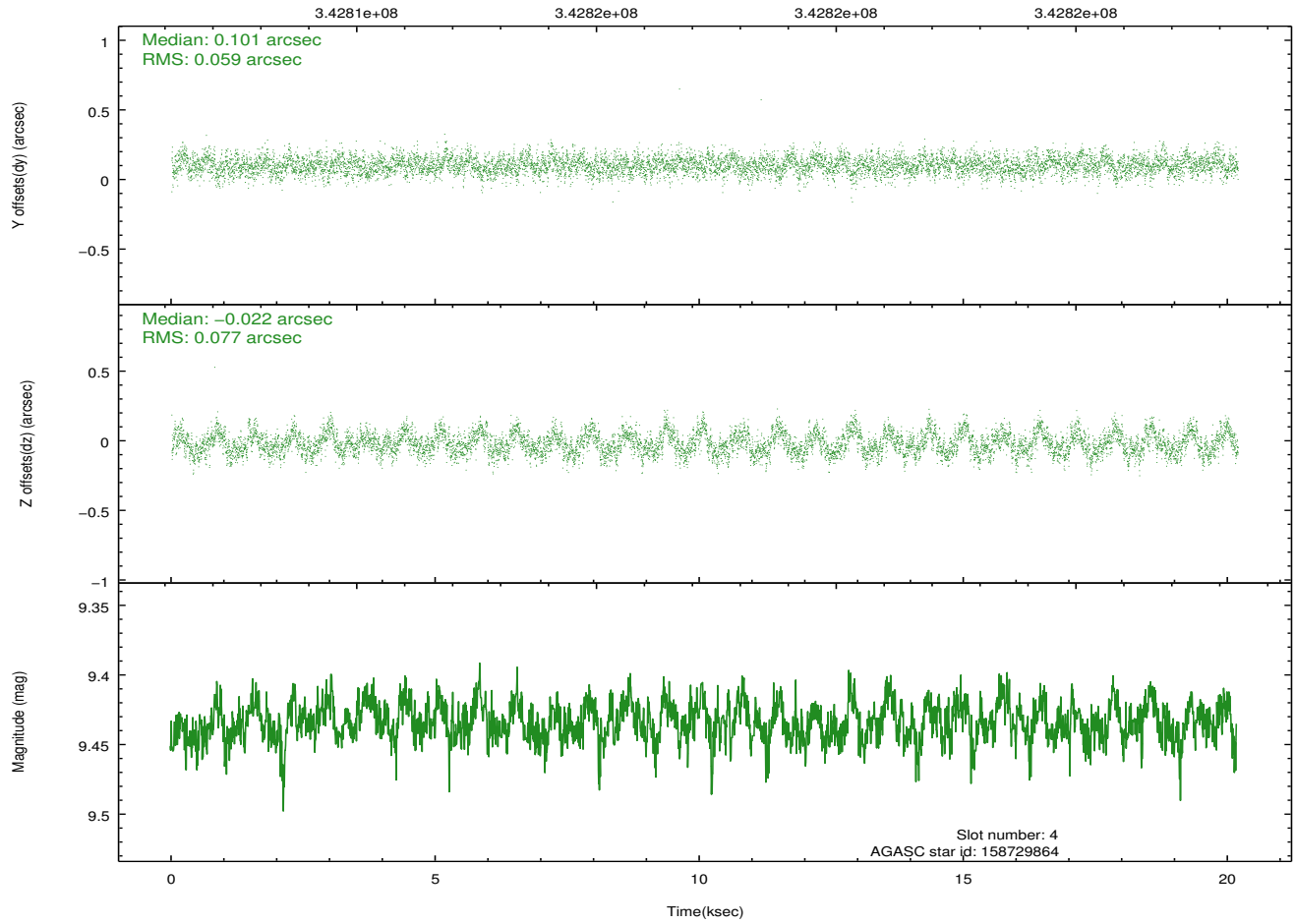
2.4.1 Slot 3



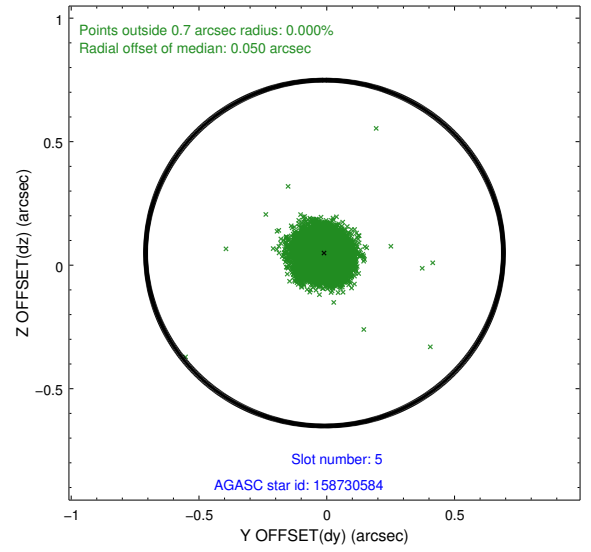
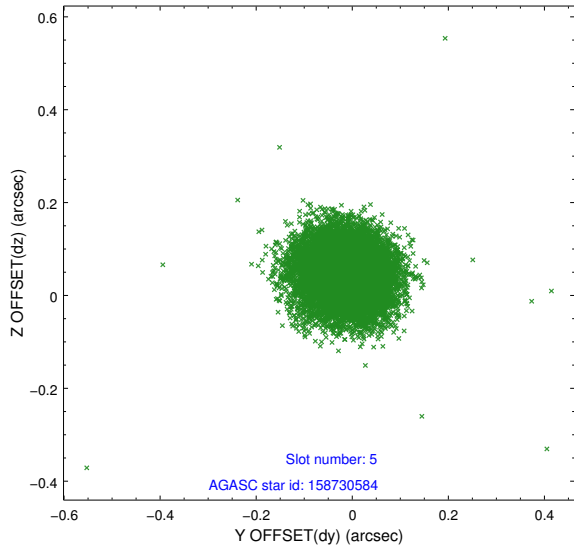
2.4.2 Slot 4



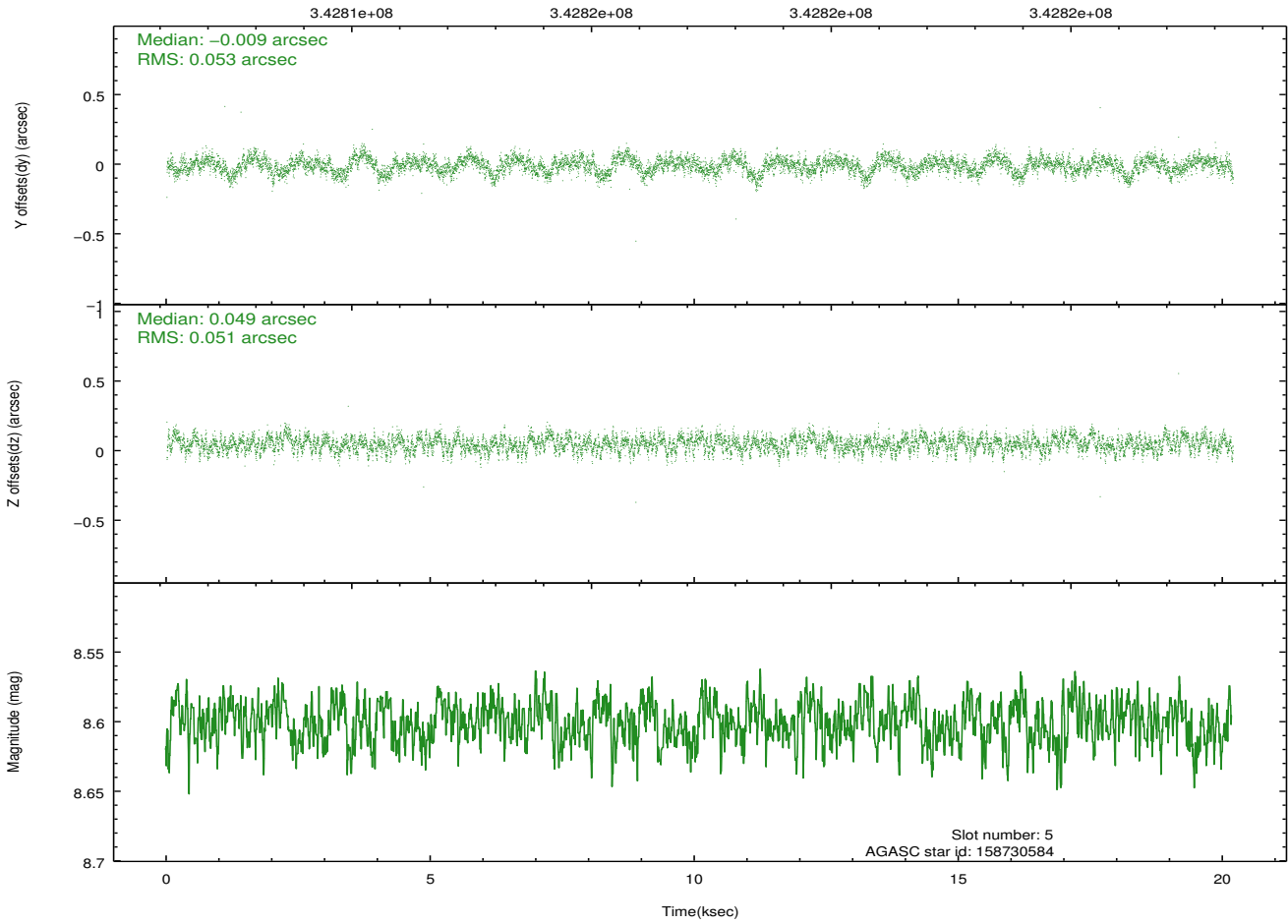
Time (s)



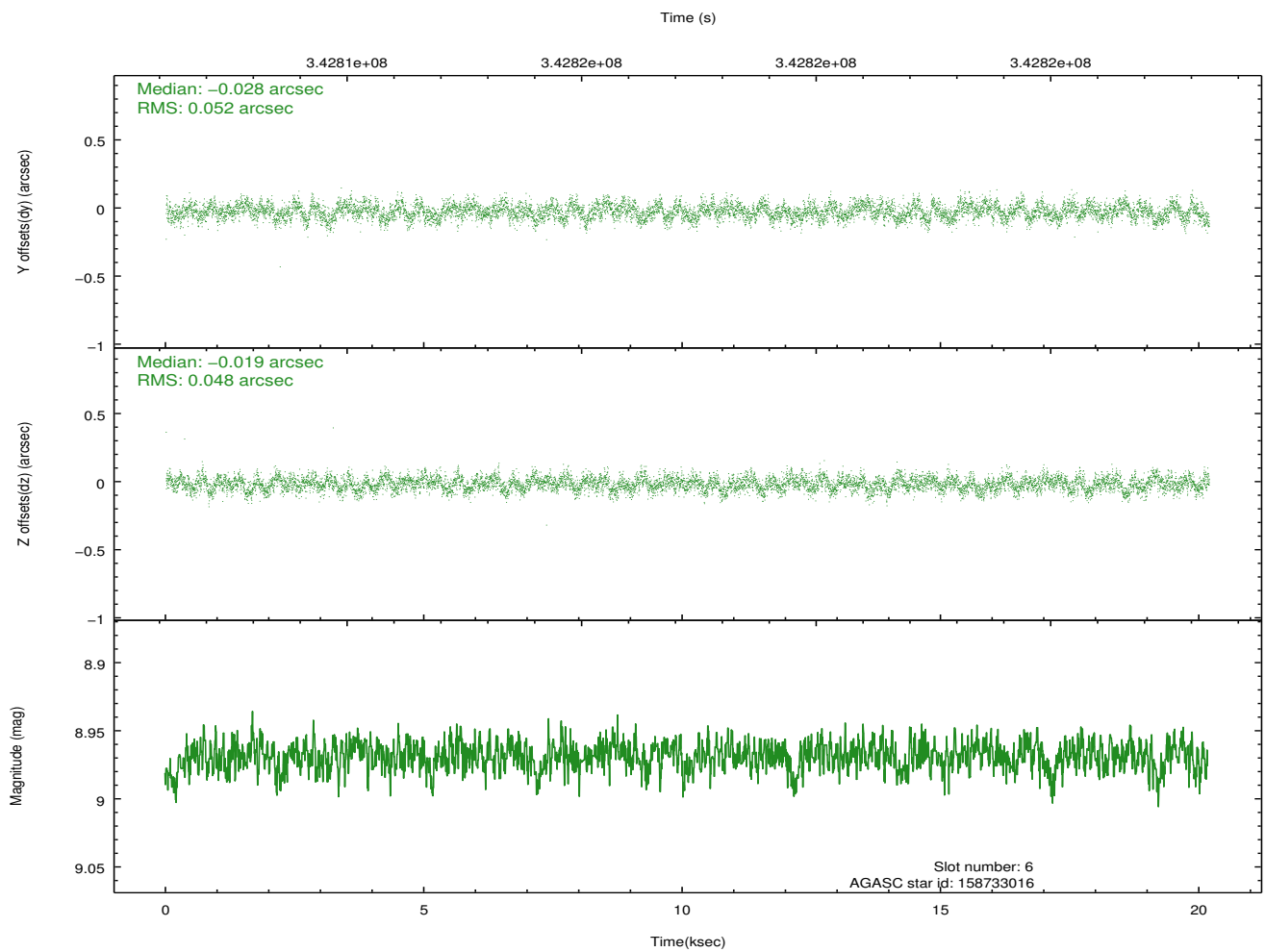
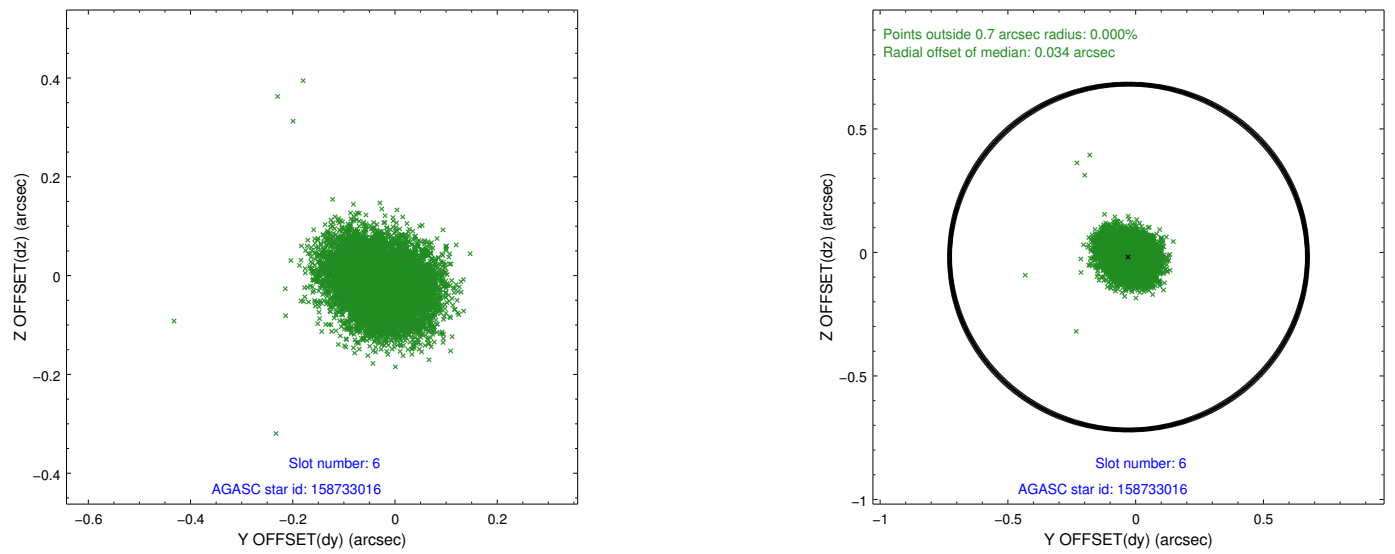
2.4.3 Slot 5



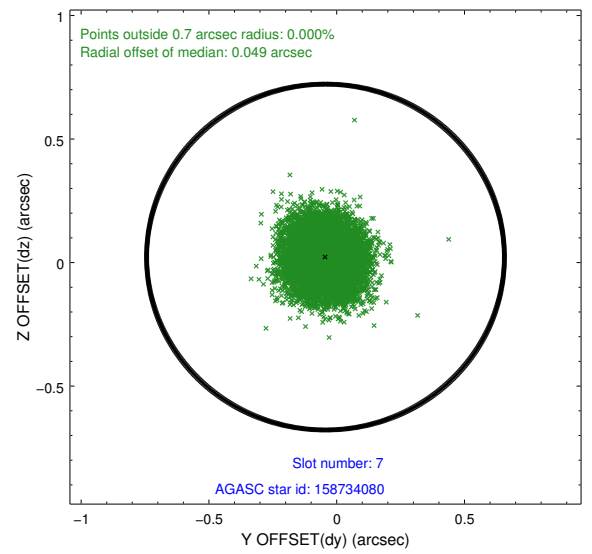
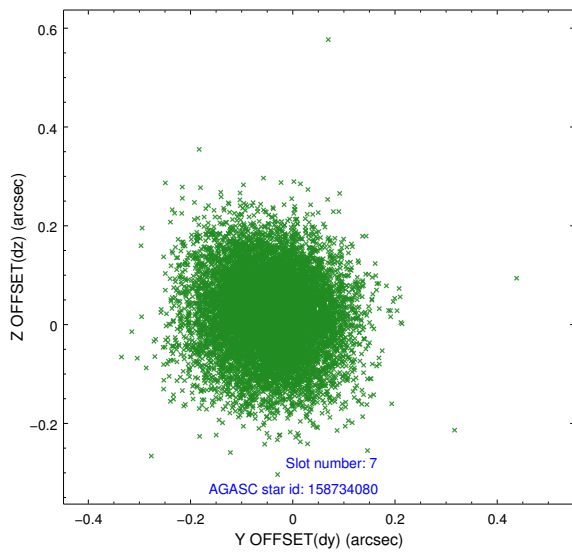
Time (s)



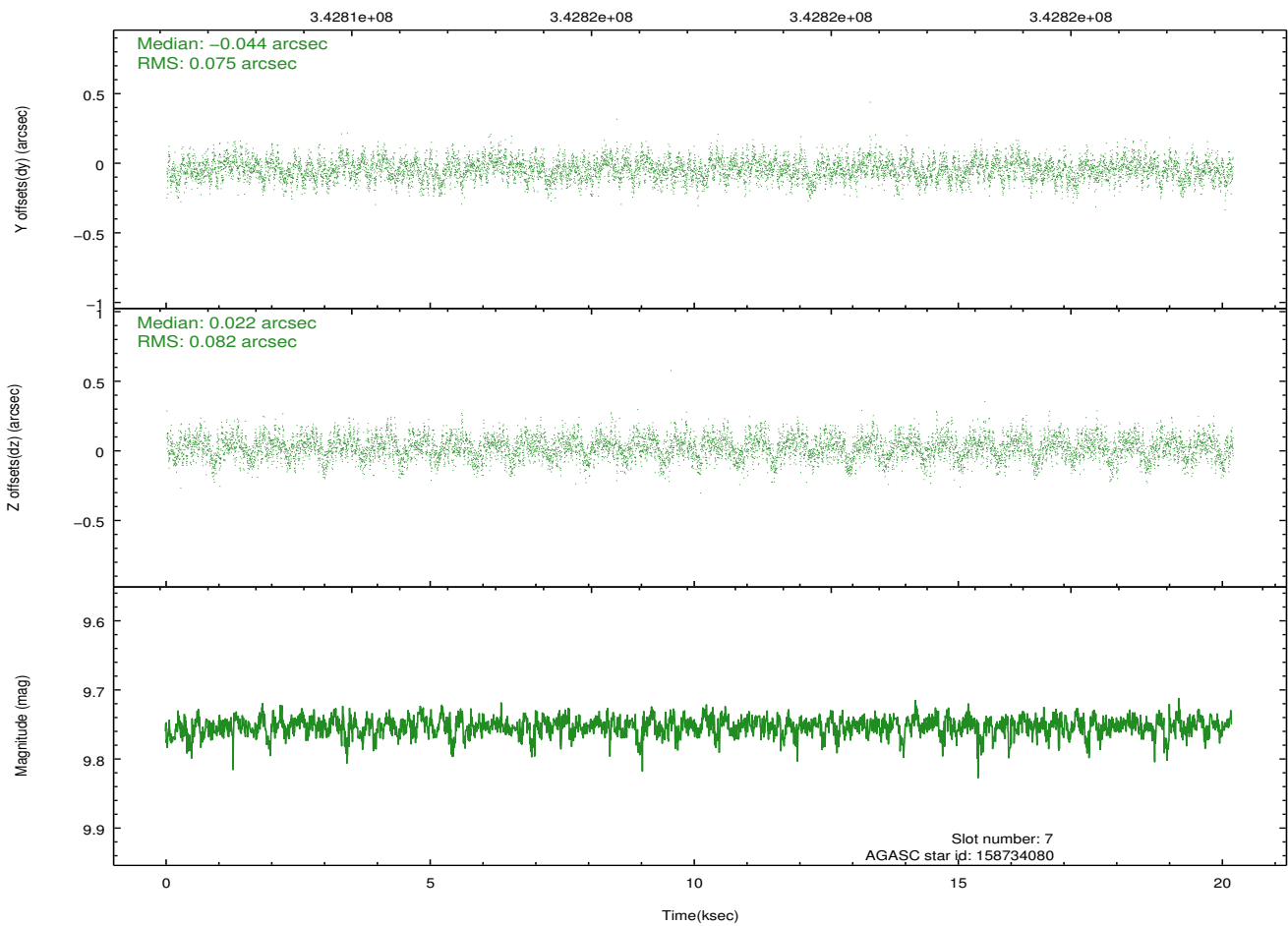
2.4.4 Slot 6



2.4.5 Slot 7

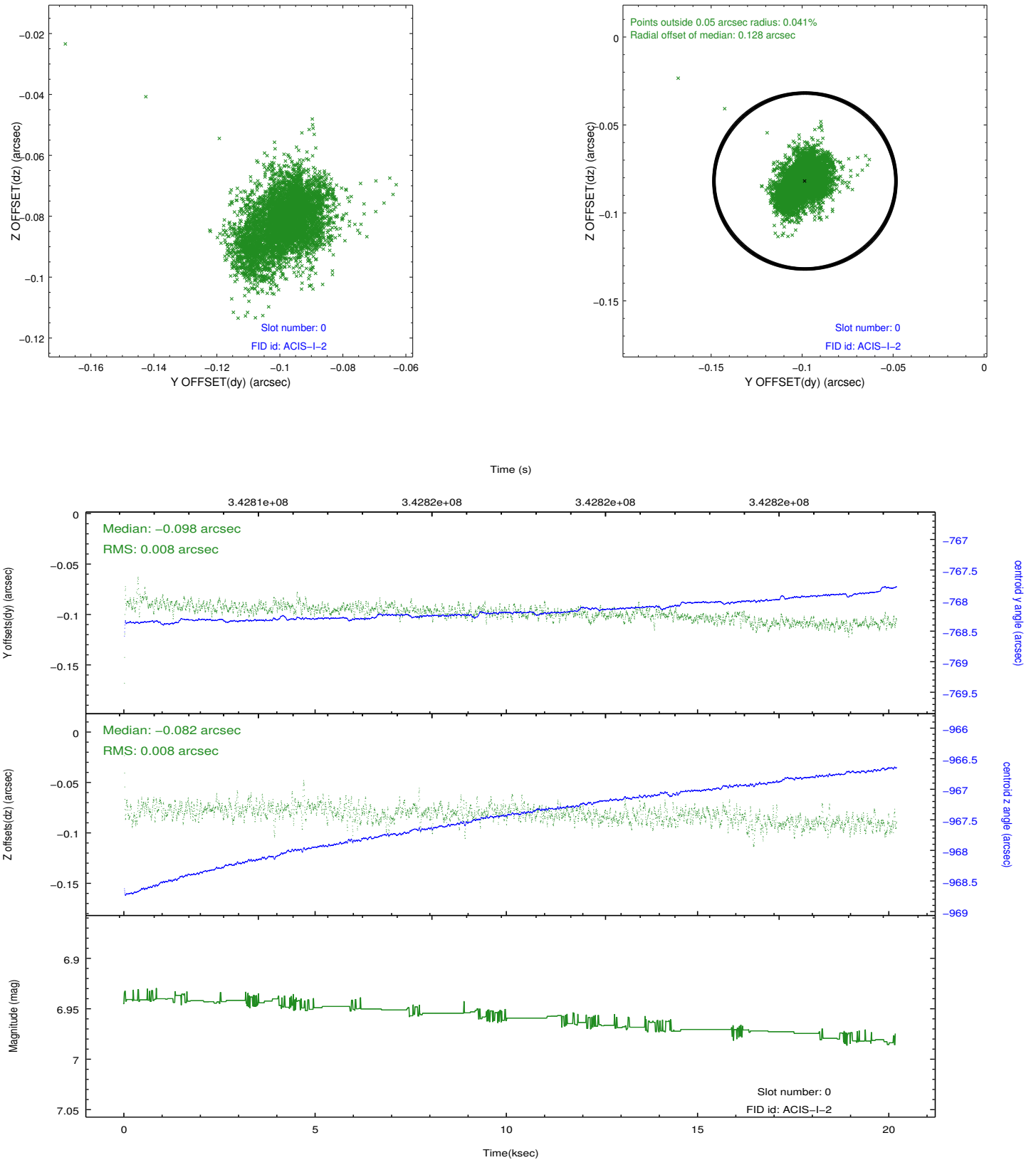


Time (s)

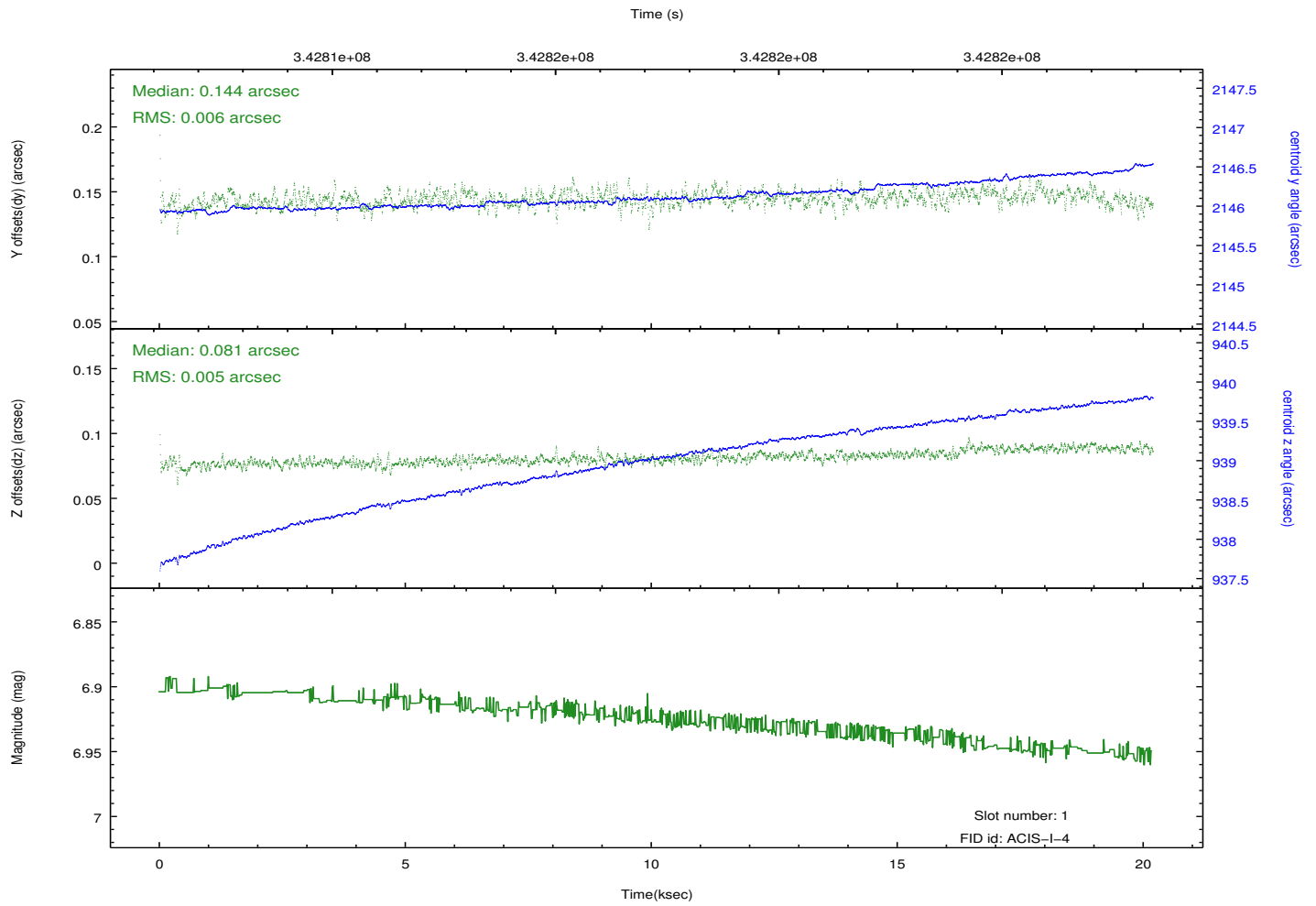
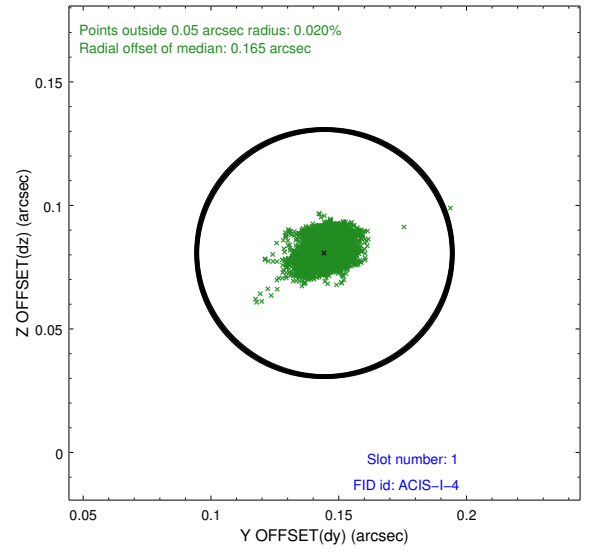
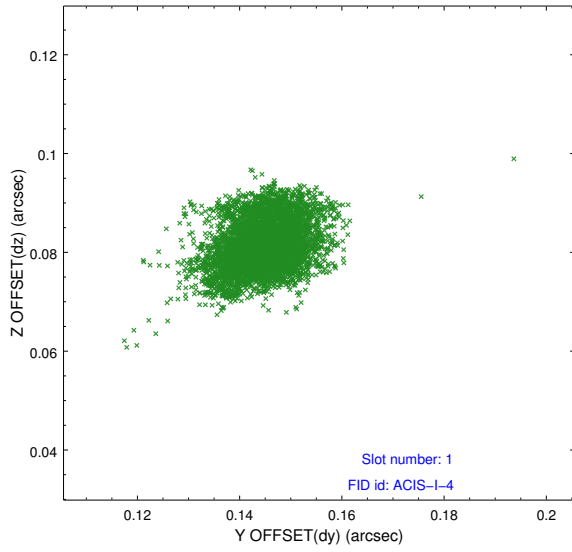


2.5 FID Slots

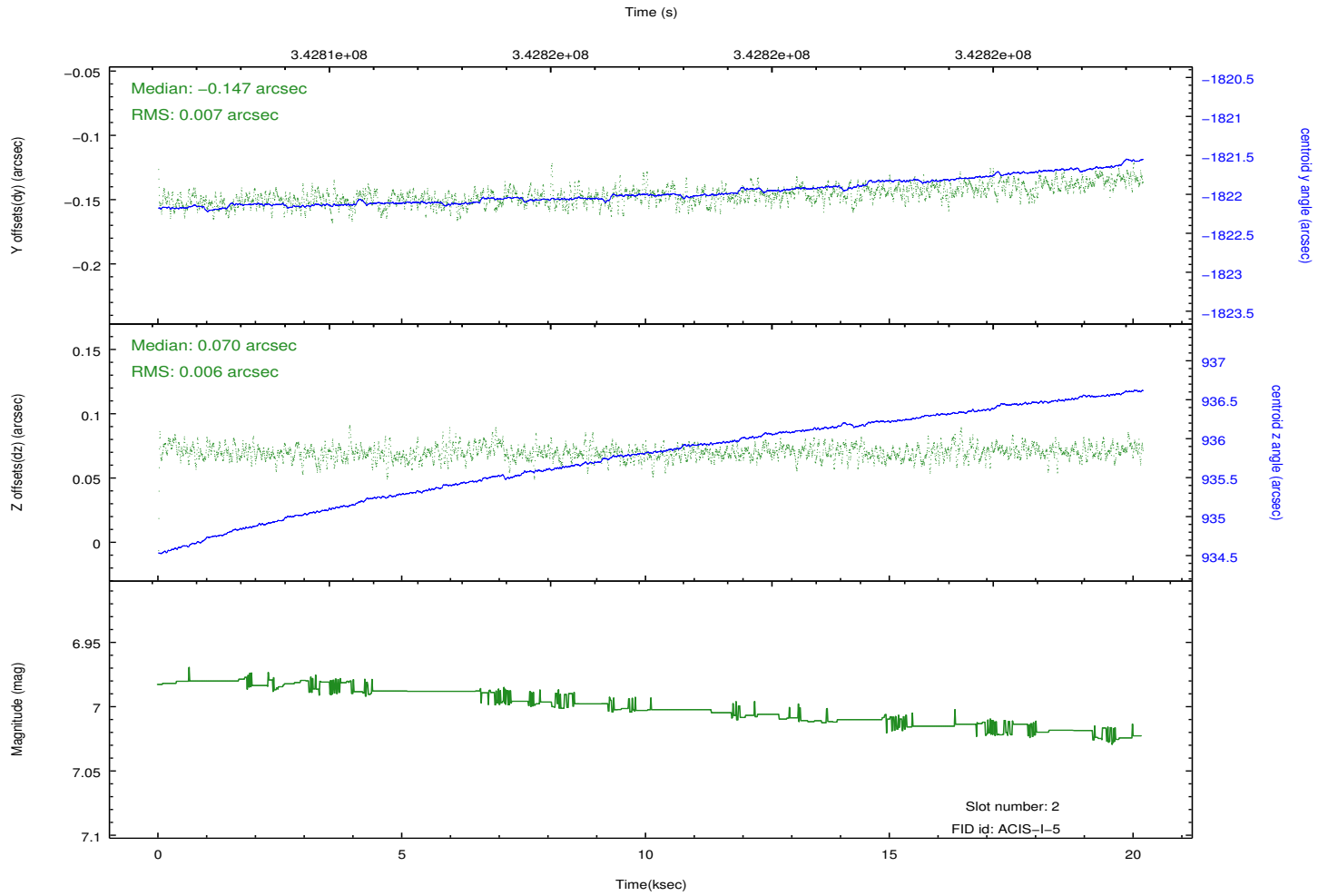
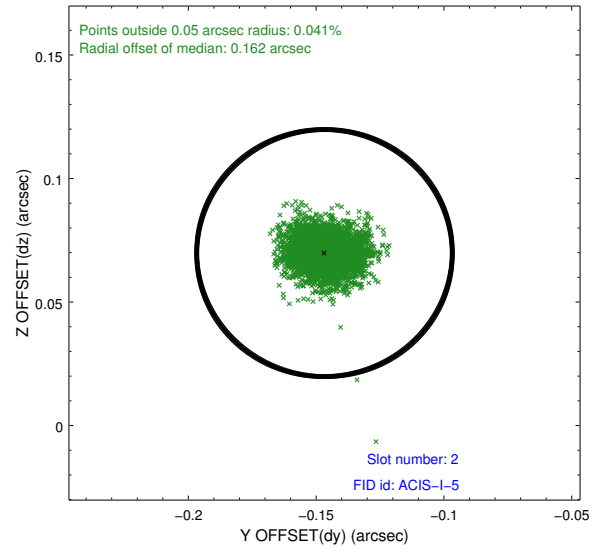
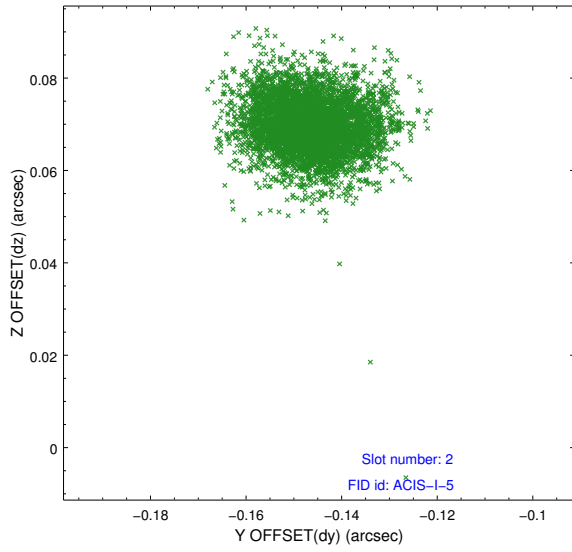
2.5.1 Slot 0



2.5.2 Slot 1



2.5.3 Slot 2



A Summary

A.1 Status

V&V Scientist	Jen Lauer
V&V Date (YYYY-MM-DD)	2012.05.31
V&V Edition	1
V&V Disposition and Status	OK
V&V Charge Time	20.1840592

A.2 Comments