

V&V Reference Report

L2 ASCDS Version : 8.4.5

Observation 10460 - L2 Version 2
Chandra X-Ray Center

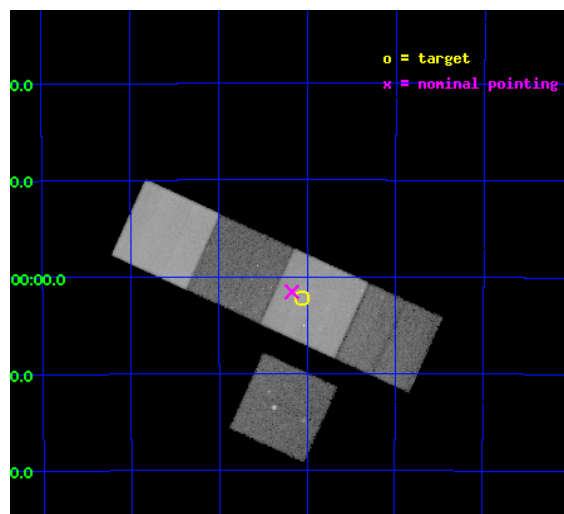
L2 Processing Date : Jun 10 2012

Contents

1	Front	2
2	OBI	3
2.1	OBI	3
2.1.1	Images	3
2.1.2	Bias	3
2.1.3	Parameters	4
2.1.4	Events	4
2.2	Compared Parameters	5
2.3	Aspect	6
2.4	Star Slots	9
2.4.1	Slot 3	9
2.4.2	Slot 4	10
2.4.3	Slot 5	11
2.4.4	Slot 6	12
2.4.5	Slot 7	13
2.5	FID Slots	14
2.5.1	Slot 0	14
2.5.2	Slot 1	15
2.5.3	Slot 2	16
A	Summary	17
A.1	Status	17
A.2	Comments	17

1 Front

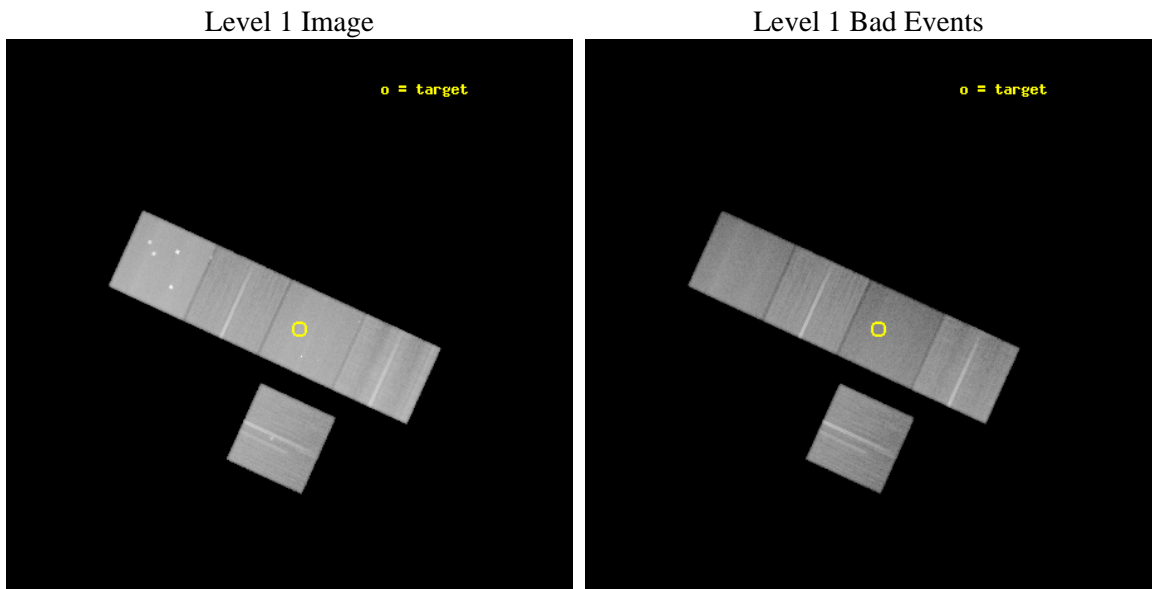
seq_num	800821	Sequence number
obs_id	10460	Observation id
title	Chandra Observations of Abell 3653, the Cluster with the Largest Known cD Peculiar Velocity	Proposal title
observer	Dr. CRAIG SARAZIN	Principal investigator
object	Abell 3653	Source name
dtcycle	0	
cycle	P	events from which exps? Prim/Second/Both
ra_targ	298.264167	Observer's specified target RA [deg]
dec_targ	-52.037	Observer's specified target Dec [deg]
ra_nom	298.29321193819	Nominal RA [deg]
dec_nom	-52.026083054702	Nominal Dec [deg]
roll_nom	24.565255869068	Nominal Roll [deg]
revision	2	Processing version of data
ontime	44218.40034008	Sum of GTIs [s]
livetime	43640.654386524	Livetime [s]
ontime3	44215.259309888	Sum of GTIs [s]
ontime5	44218.40034008	Sum of GTIs [s]
ontime6	44215.259319723	Sum of GTIs [s]
ontime7	44218.40034008	Sum of GTIs [s]
ontime8	44215.259319842	Sum of GTIs [s]
l2events	586796	Number of level 2 events



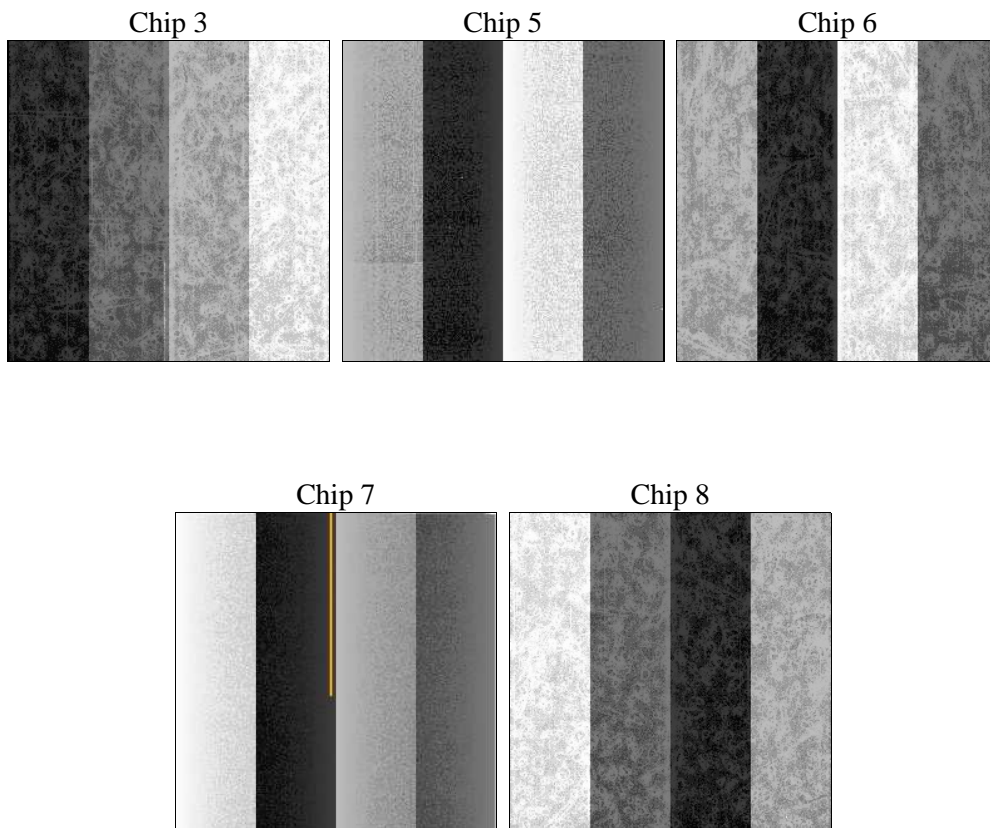
2 OBI

2.1 OBI

2.1.1 Images



2.1.2 Bias



2.1.3 Parameters

obi_num	0	Obi number	sched_exp_time	44073.897000	[s] Scheduled observation exposure time
ascdsver	8.4.5	Processing system revision	ontime	44218.40034008	Sum of GTIs [s]
caldsver	4.4.10	 	ontime3	44215.259309888	Sum of GTIs [s]
date	2012-06-09T23:57:56	Date and time of file creation	ontime5	44218.40034008	Sum of GTIs [s]
revision	2	Processing version of data	ontime6	44215.259319723	Sum of GTIs [s]
			ontime7	44218.40034008	Sum of GTIs [s]
			ontime8	44215.259319842	Sum of GTIs [s]
			l1events	2328005	Number of level 1 events

2.1.4 Events

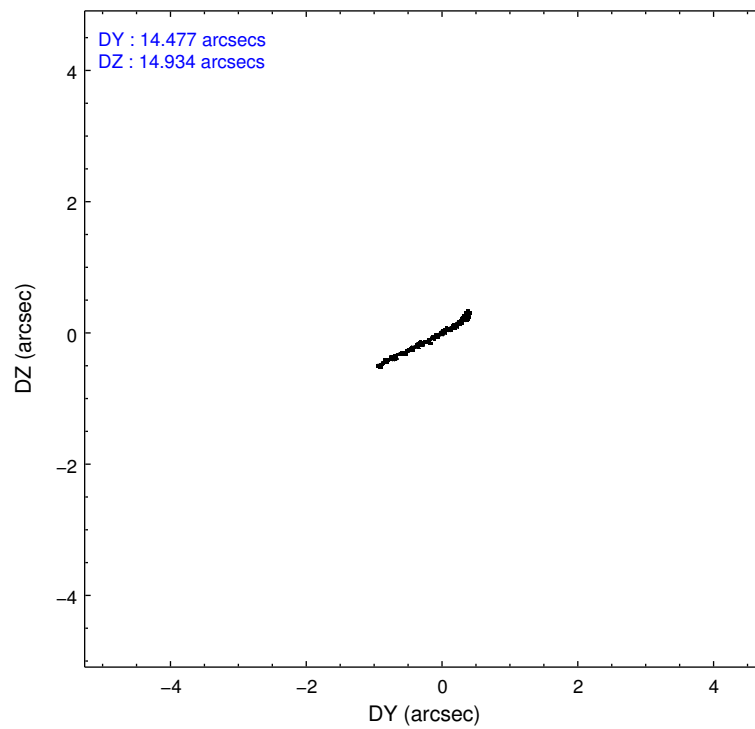
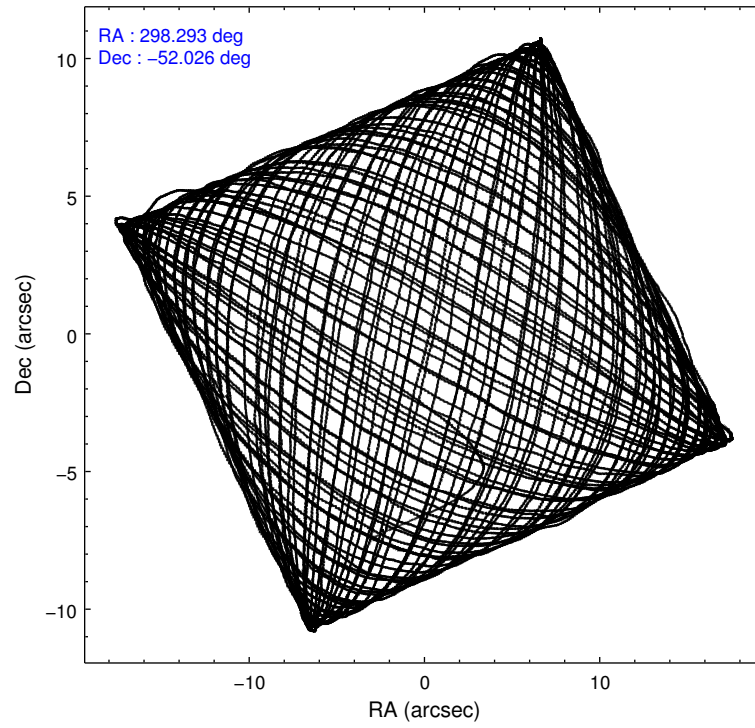
	ccd 3	ccd 5	ccd 6	ccd 7	ccd 8
level 1 events	380885	574642	401951	469182	501345
rejected events	342322	282830	358351	247961	375919
rejected %	89%	49%	89%	52%	74%

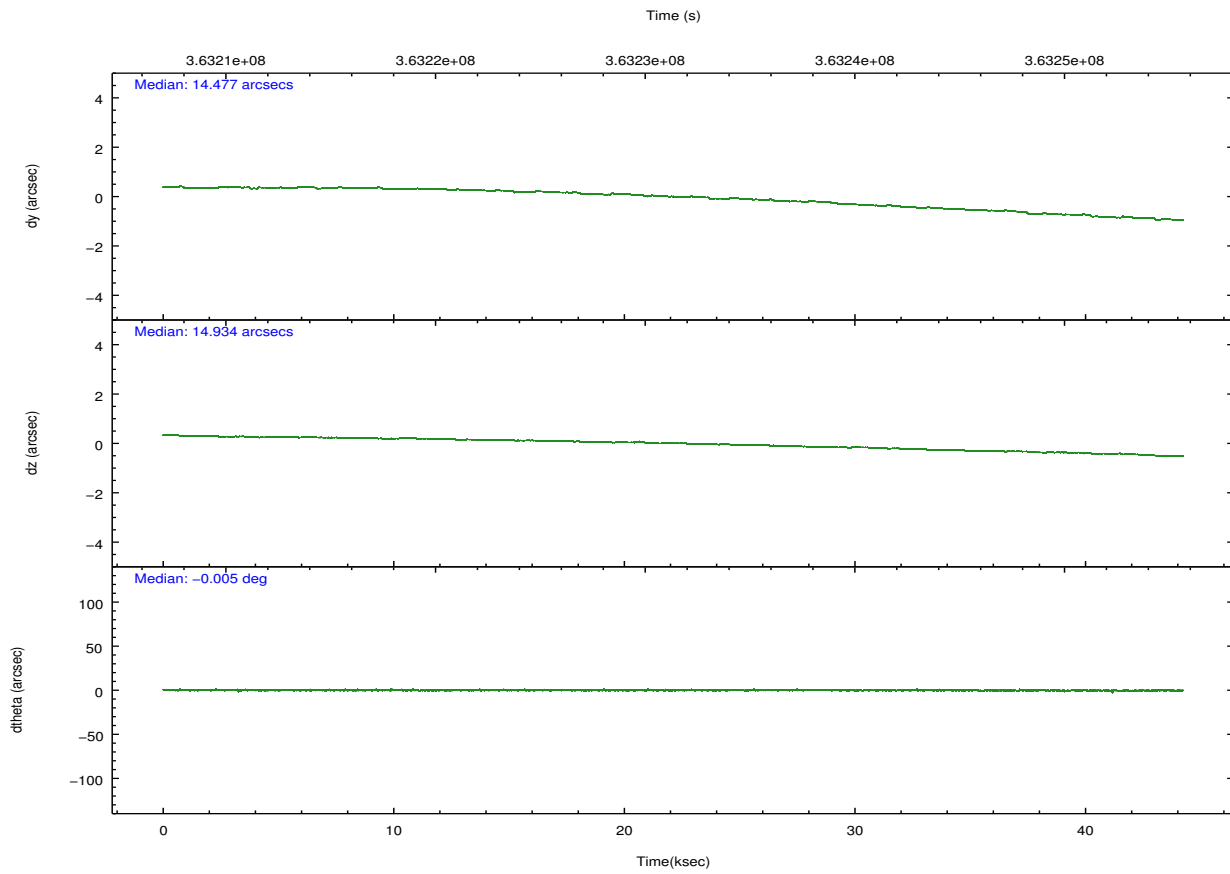
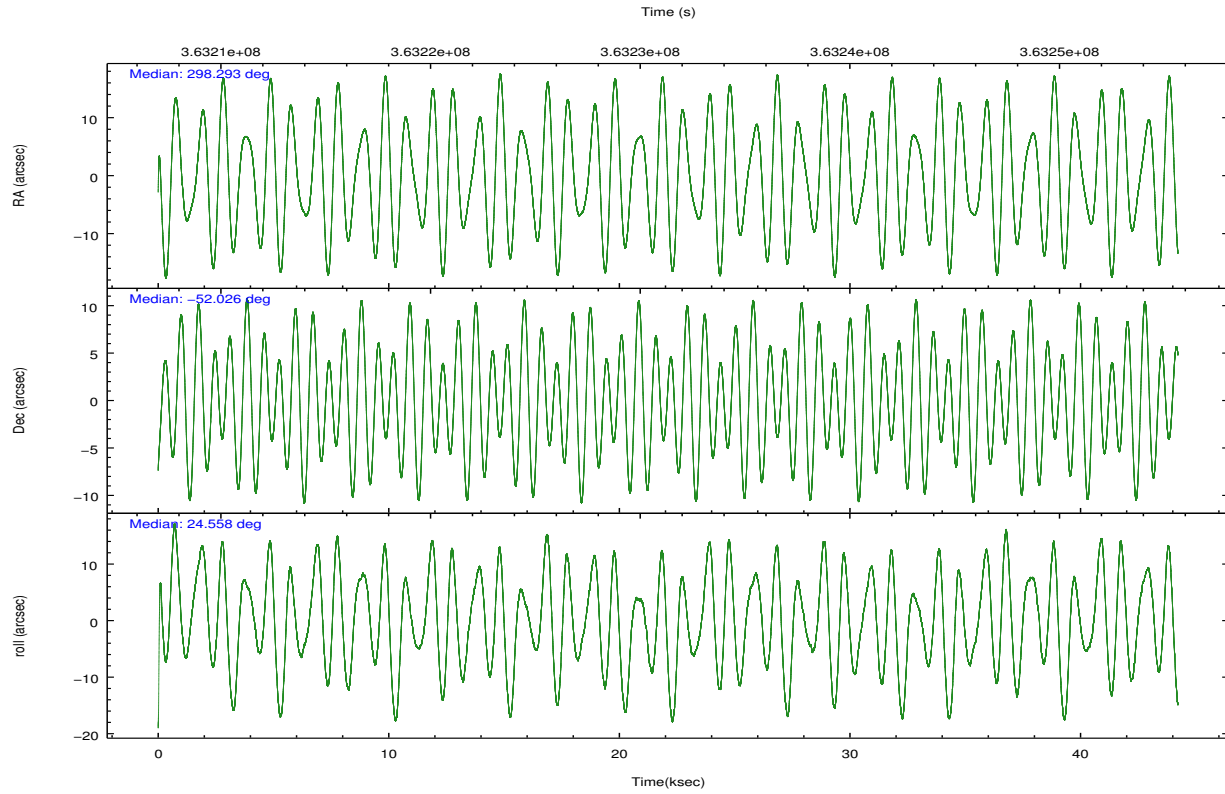
	ccd 3	ccd 5	ccd 6	ccd 7	ccd 8
grade 0 events	14641	45300	16687	25050	37590
	3%	7%	4%	5%	7%
grade 1 events	233	1063	208	613	423
	0%	0%	0%	0%	0%
grade 2 events	8348	82600	9595	46927	29337
	2%	14%	2%	10%	5%
grade 3 events	4318	11192	4449	20624	13662
	1%	1%	1%	4%	2%
grade 4 events	4147	10843	4397	20380	12558
	1%	1%	1%	4%	2%
grade 5 events	15956	42982	16403	46647	23442
	4%	7%	4%	9%	4%
grade 6 events	7500	144987	8949	110489	33576
	1%	25%	2%	23%	6%
grade 7 events	325742	235675	341263	198452	350757
	85%	41%	84%	42%	69%

2.2 Compared Parameters

Parameter	Planned	Actual	Parameter	Planned	Actual
Instrument	ACIS	ACIS	Obspar format version number	7	7
Detector	ACIS-35678	ACIS-35678	Obspar file type	PREDICTED	ACTUAL
Grating	NONE	NONE	Obspar update status	NONE	UPDATED
Data mode	VFAINT	VFAINT	CCD I0 on	N	N
Observation mode	POINTING	POINTING	CCD I1 on	N	N
[deg] Pointing RA	298.267949	298.2932119381947	CCD I2 on	N	N
[deg] Pointing Dec	-52.048578	-52.02608305470169	CCD I3 on	O1	Y
[deg] Pointing Roll	24.388717	24.56525586906826	CCD S0 on	N	N
[mm] SIM focus pos	-0.684267	-0.6828225247311905	CCD S1 on	O2	Y
[mm] SIM defocus	0	0.001444936568705701	CCD S2 on	O3	Y
[mm] SIM translation stage pos	-190.132523	-190.1425803651734	CCD S3 on	Y	Y
[mm] SIM translation stage offset	0	0.01005778216563158	CCD S4 on	O4	Y
[s] Observation start time (MET)	363209364.184000	363208143.43339	CCD S5 on	N	N
Observation start date	2009-07-05T19:28:18	2009-07-05T19:09:03	Number of optional ACIS chips dropped	0	0
[s] Observation end time (MET)	363253438.184000	363253662.66067	On-chip summing requested	N	N
Observation end date	2009-07-06T07:42:52	2009-07-06T07:47:42	Subarray requested	NONE	NONE
Read mode	TIMED	TIMED	Alternating exposures requested	N	N
			[s] Primary exposure time	0.000000	3.1

2.3 Aspect





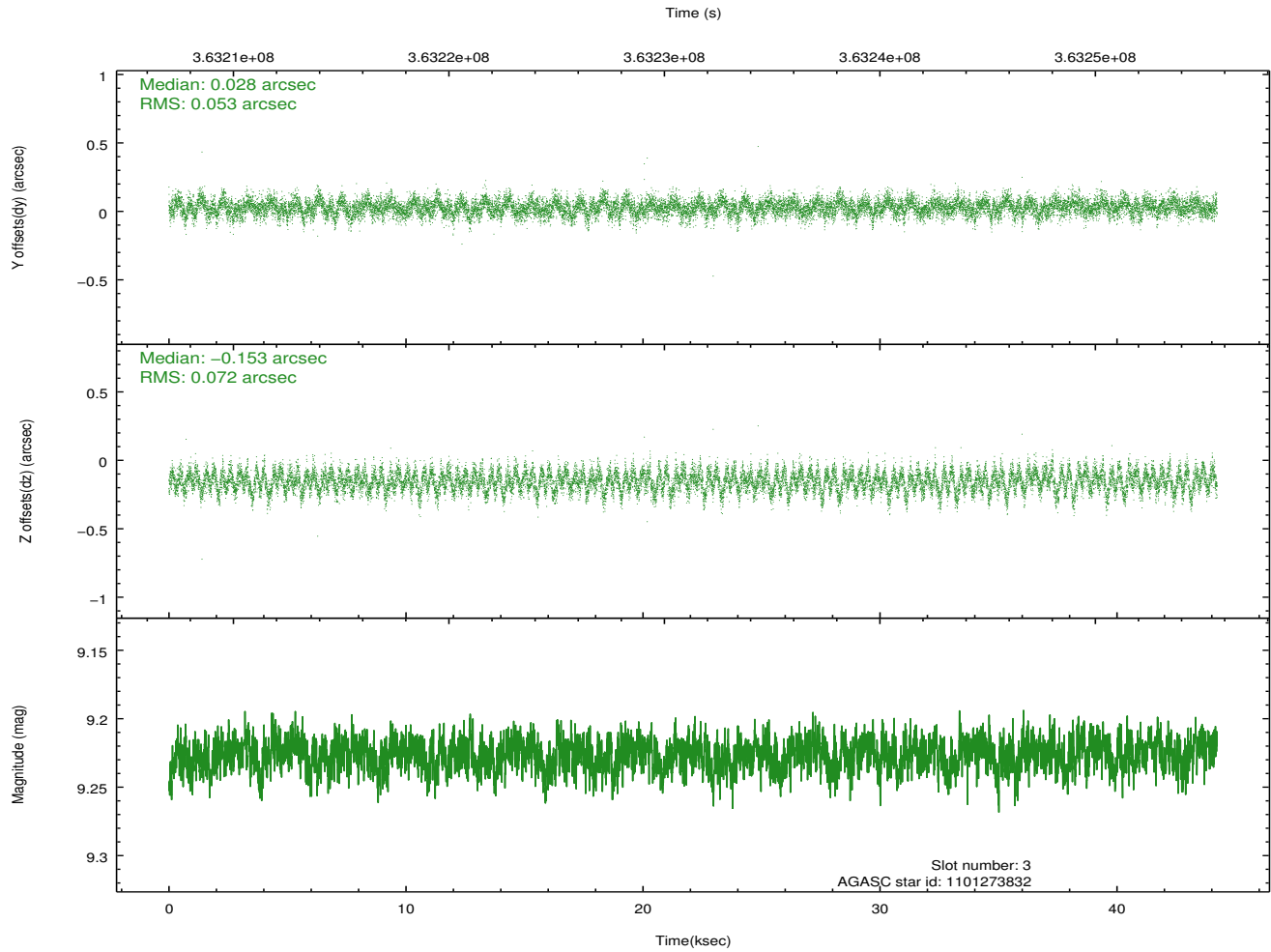
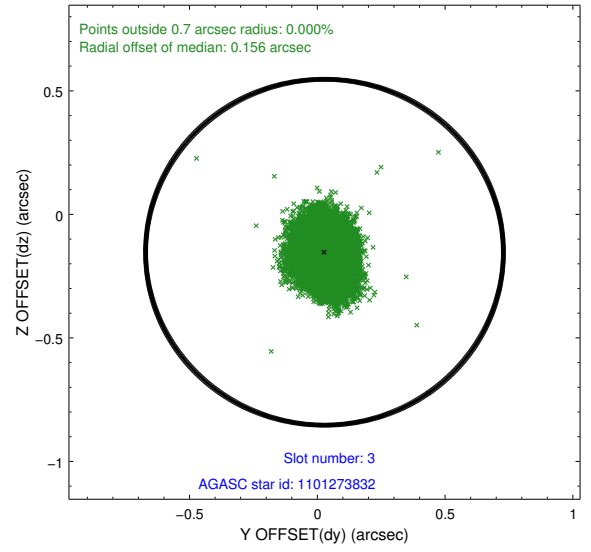
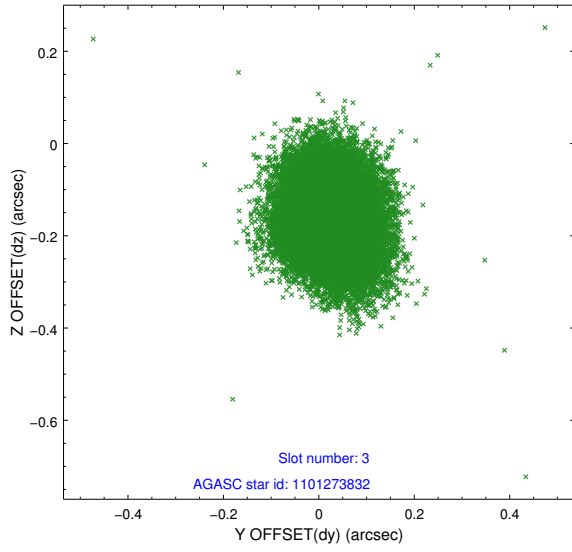
Slot Statistics

slot	status	id	mag	n_pts	med_dy	med_dz	dr1	dr2	ra	dec	mean_y	mean_z
0	FID	ACIS-S-2	6.98	10787	-0.091	-0.038	0.017	0.033	0.000000	0.000000	-767.40	-1736.27
1	FID	ACIS-S-4	7.07	10786	0.219	0.054	0.010	0.020	0.000000	0.000000	2146.16	172.34
2	FID	ACIS-S-5	7.10	10787	-0.160	-0.007	0.014	0.031	0.000000	0.000000	-1820.34	165.90
3	GUIDE	1101273832	9.23	21549	0.028	-0.153	0.095	0.154	297.693446	-51.697580	-647.89	1675.61
4	GUIDE	1101277528	9.64	21531	-0.017	-0.019	0.147	0.221	297.286253	-52.078667	-2028.89	784.50
5	GUIDE	1101408744	8.07	21567	-0.003	-0.008	0.069	0.112	298.748551	-51.808944	1329.03	341.25
6	GUIDE	1150157512	9.09	21555	0.010	0.163	0.094	0.158	298.464461	-52.657147	-513.60	-2172.69
7	GUIDE	1101270024	9.87	21404	-0.012	0.024	0.110	0.180	297.388973	-52.204636	-2003.03	277.87

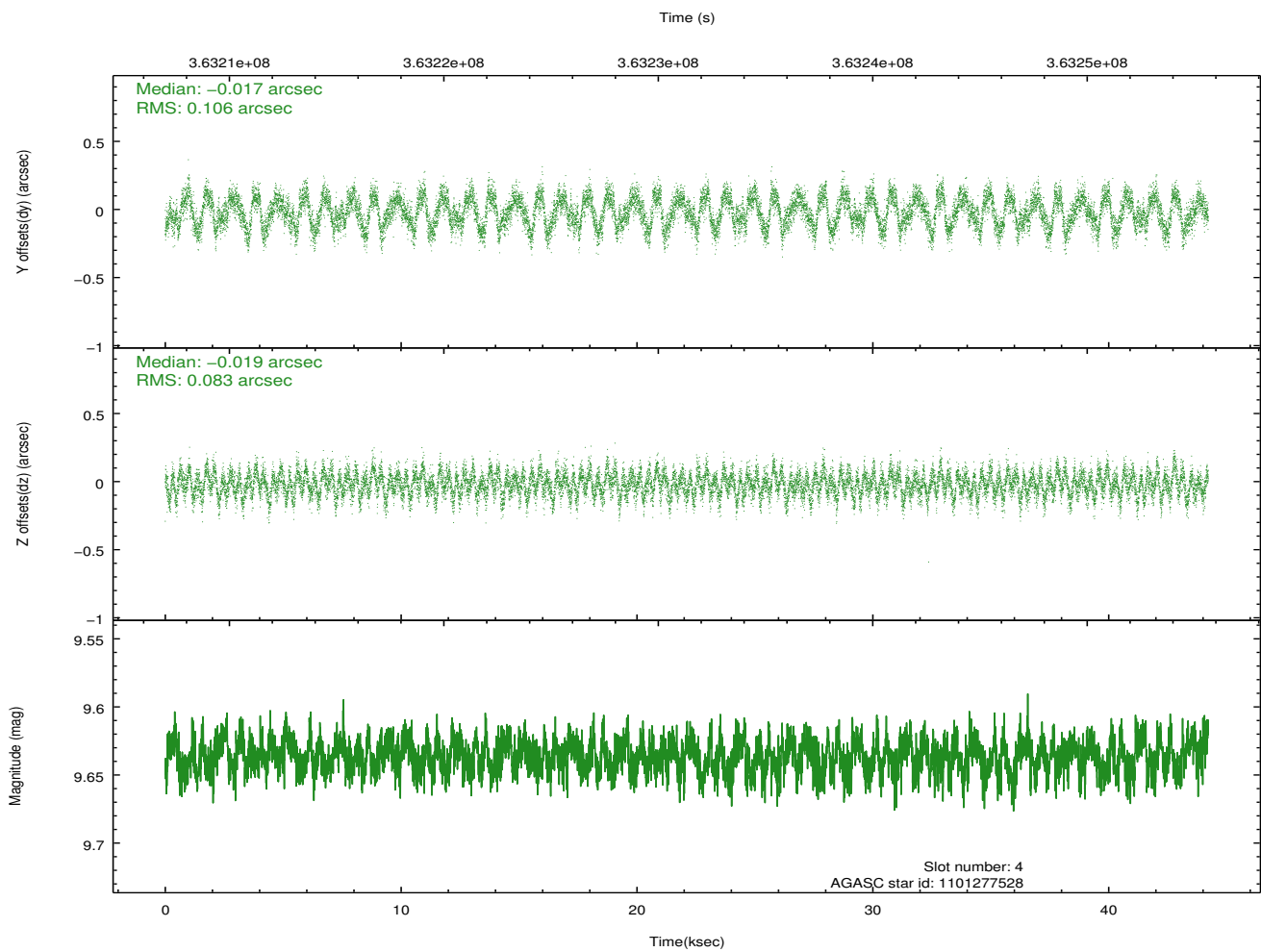
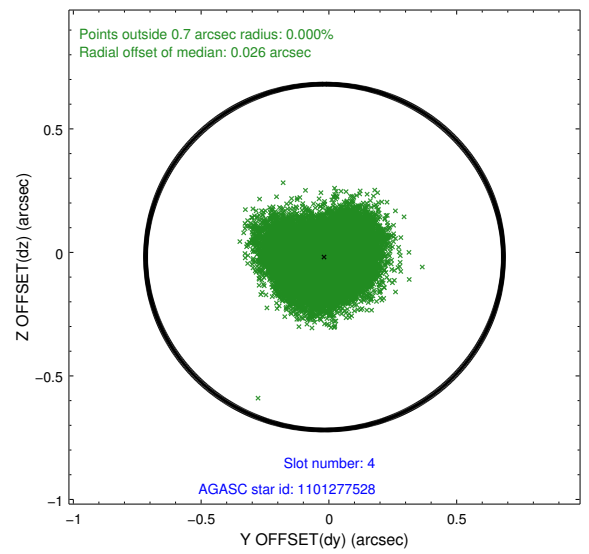
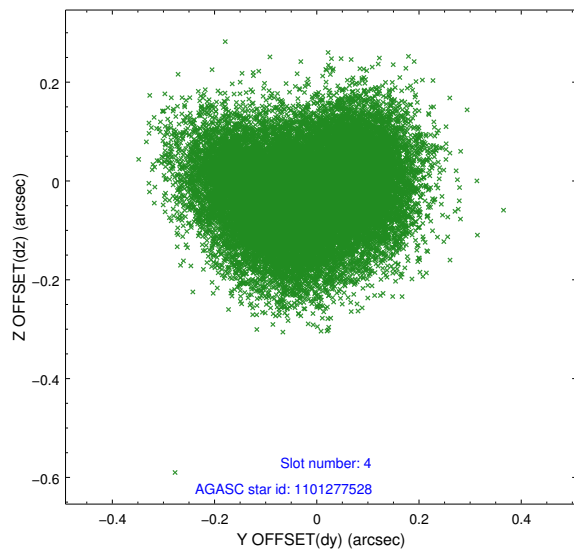
∞

2.4 Star Slots

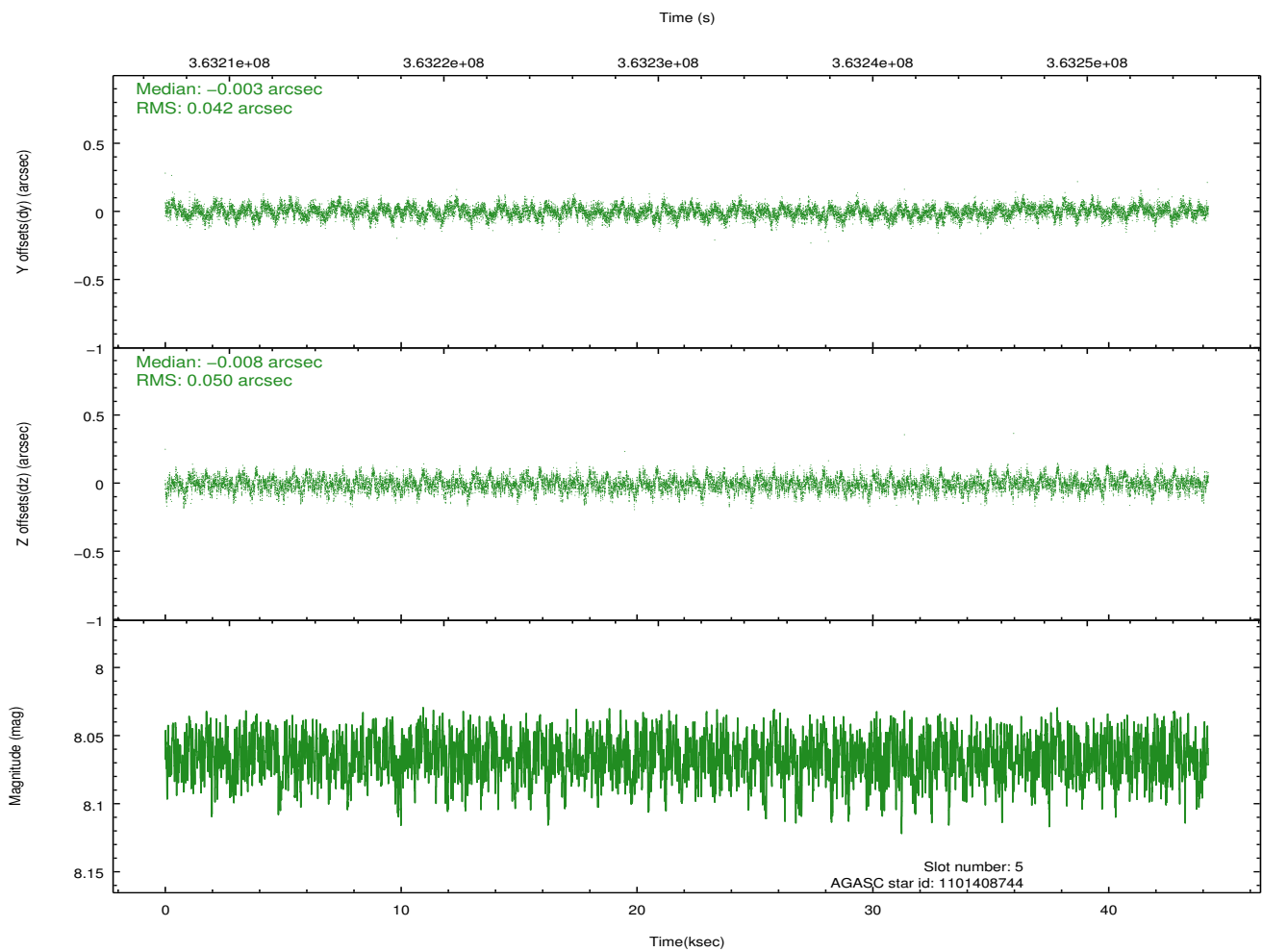
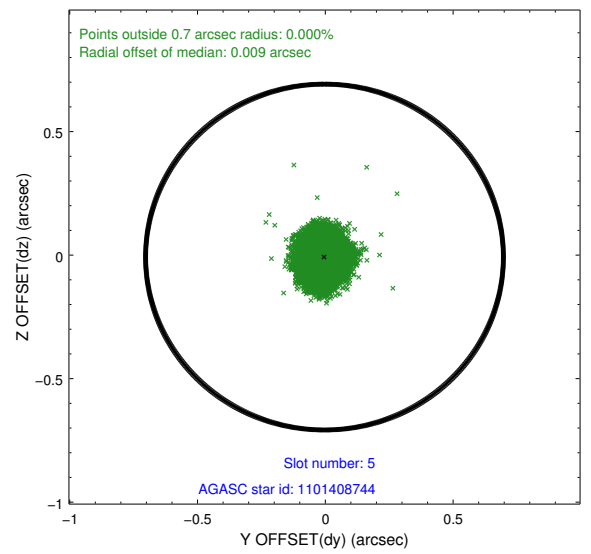
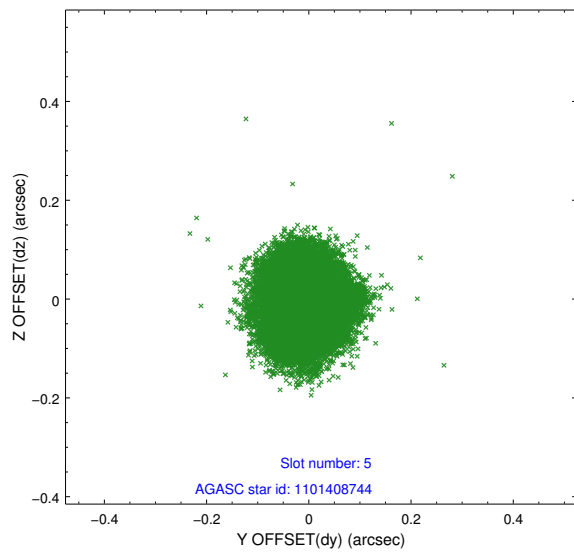
2.4.1 Slot 3



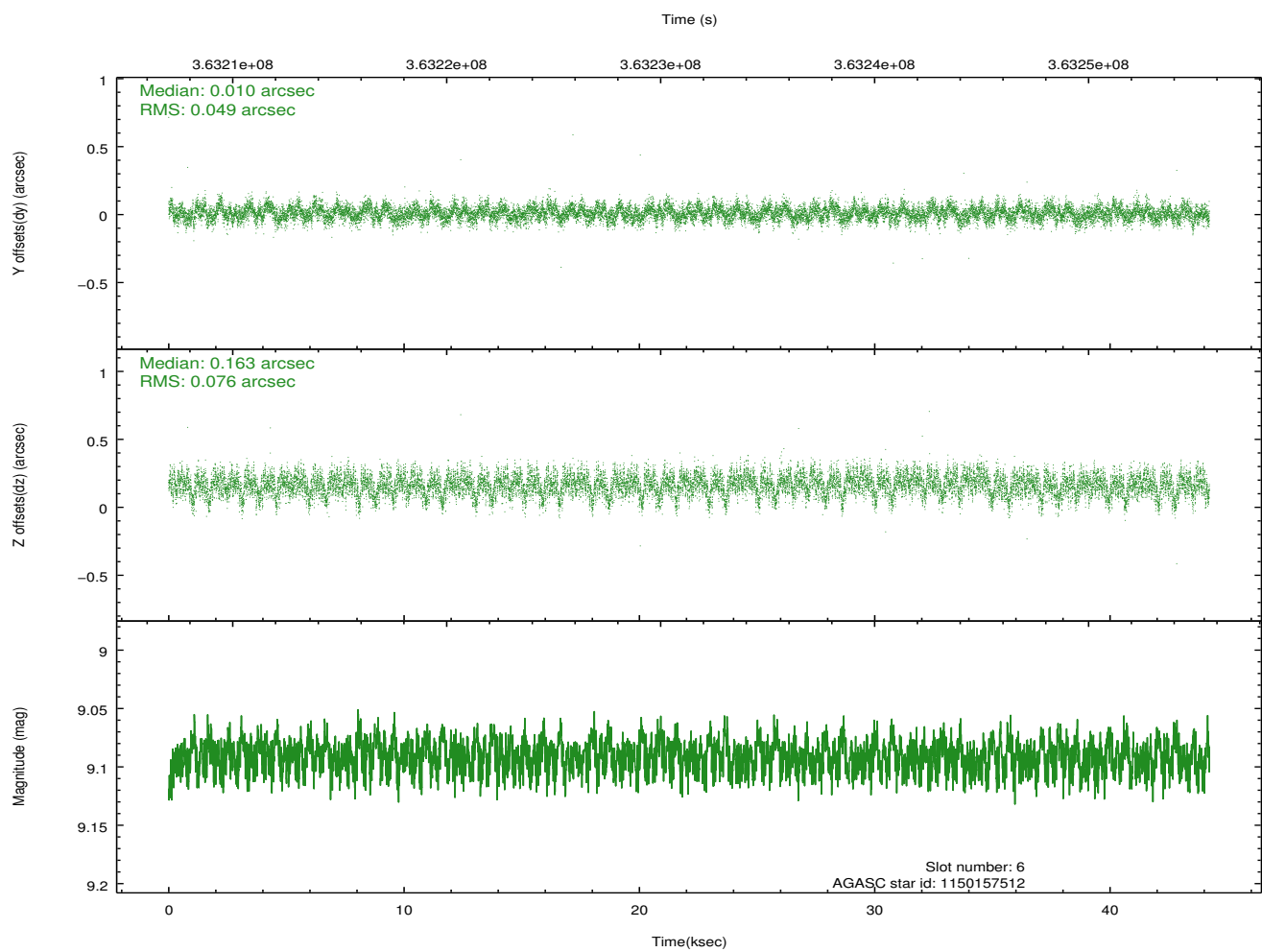
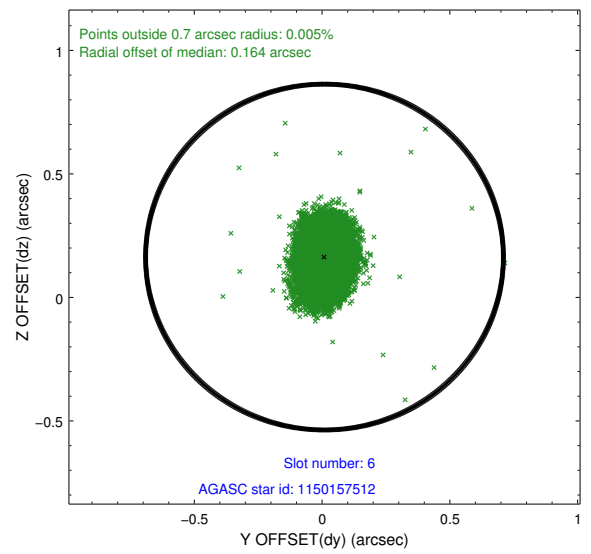
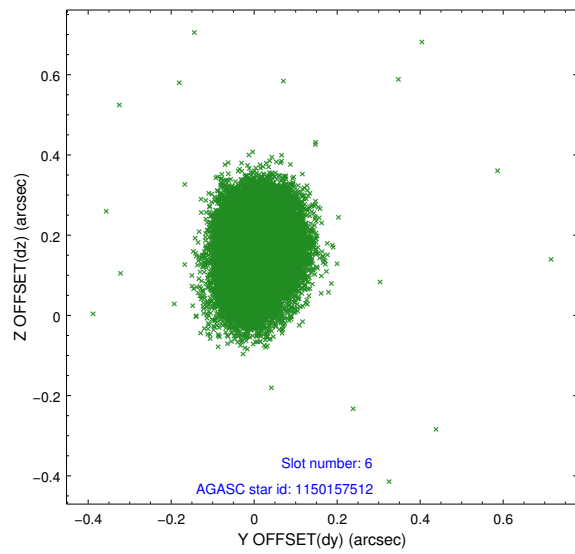
2.4.2 Slot 4



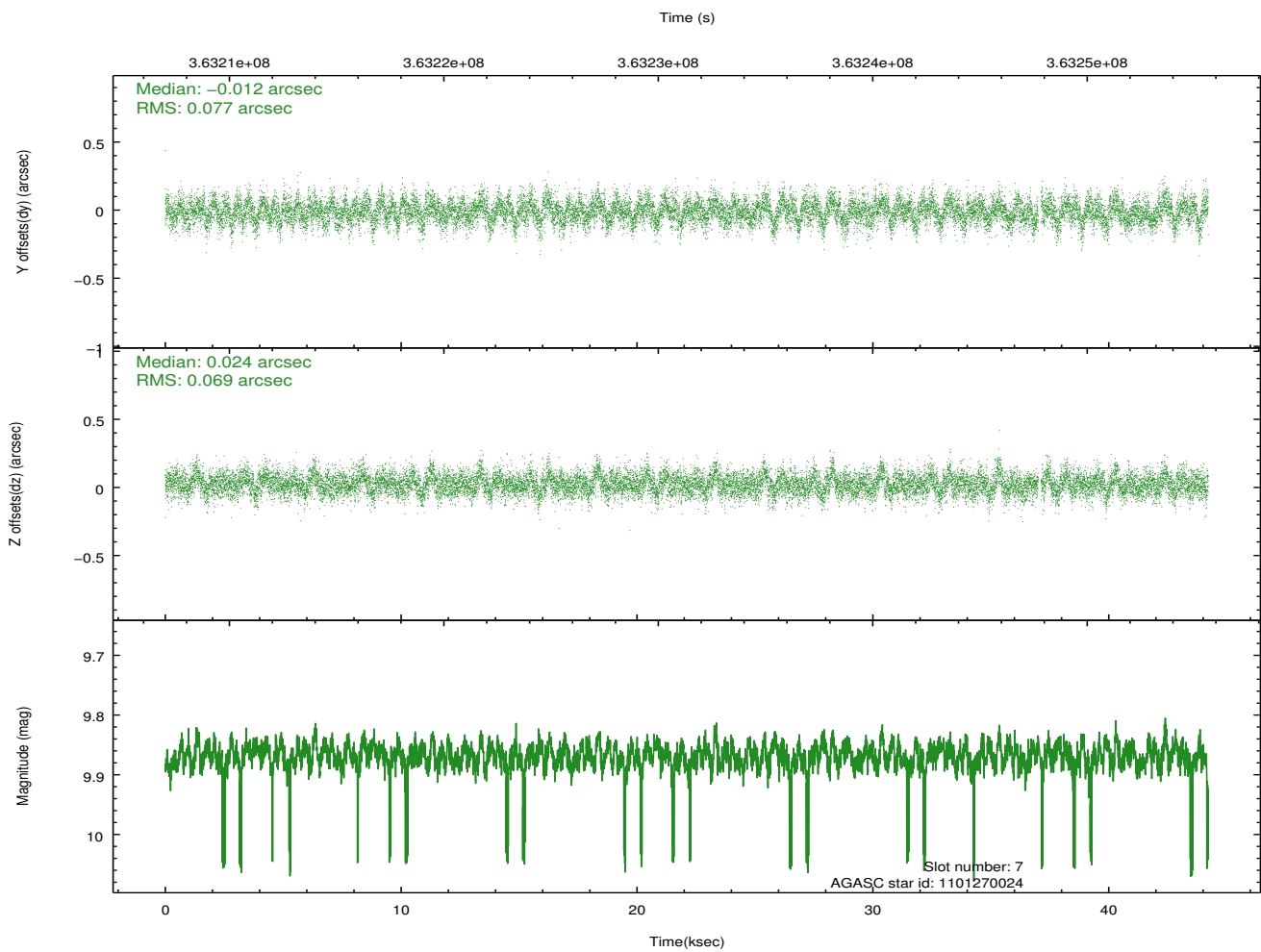
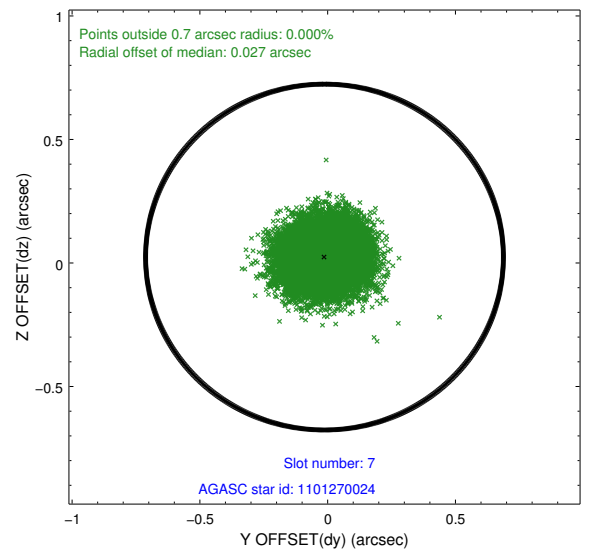
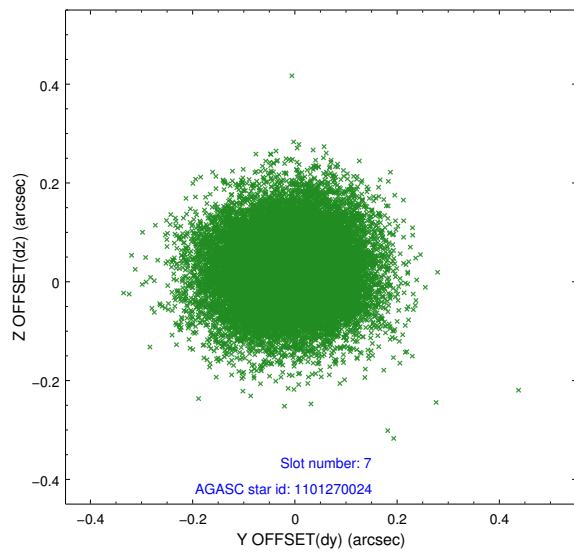
2.4.3 Slot 5



2.4.4 Slot 6

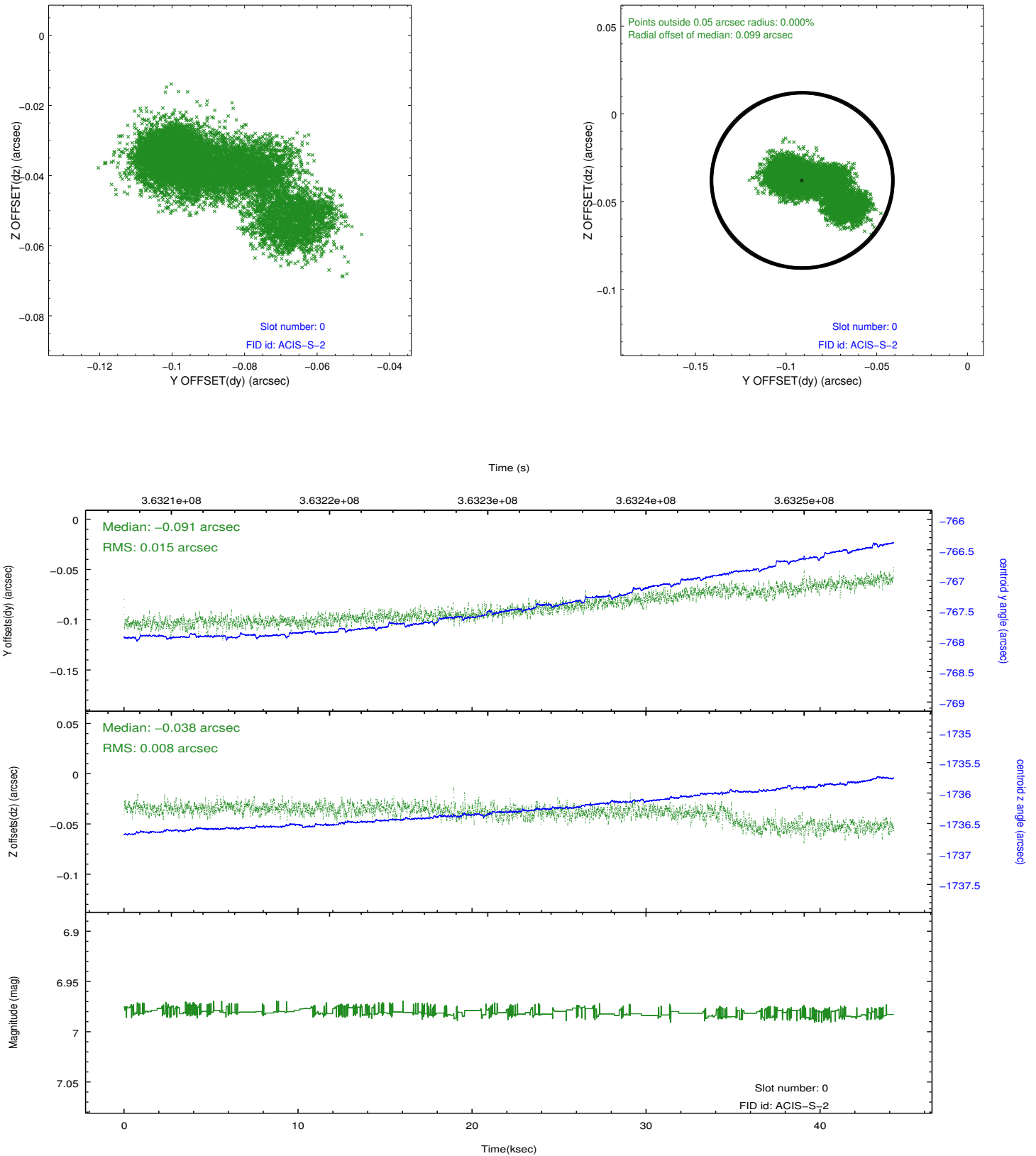


2.4.5 Slot 7

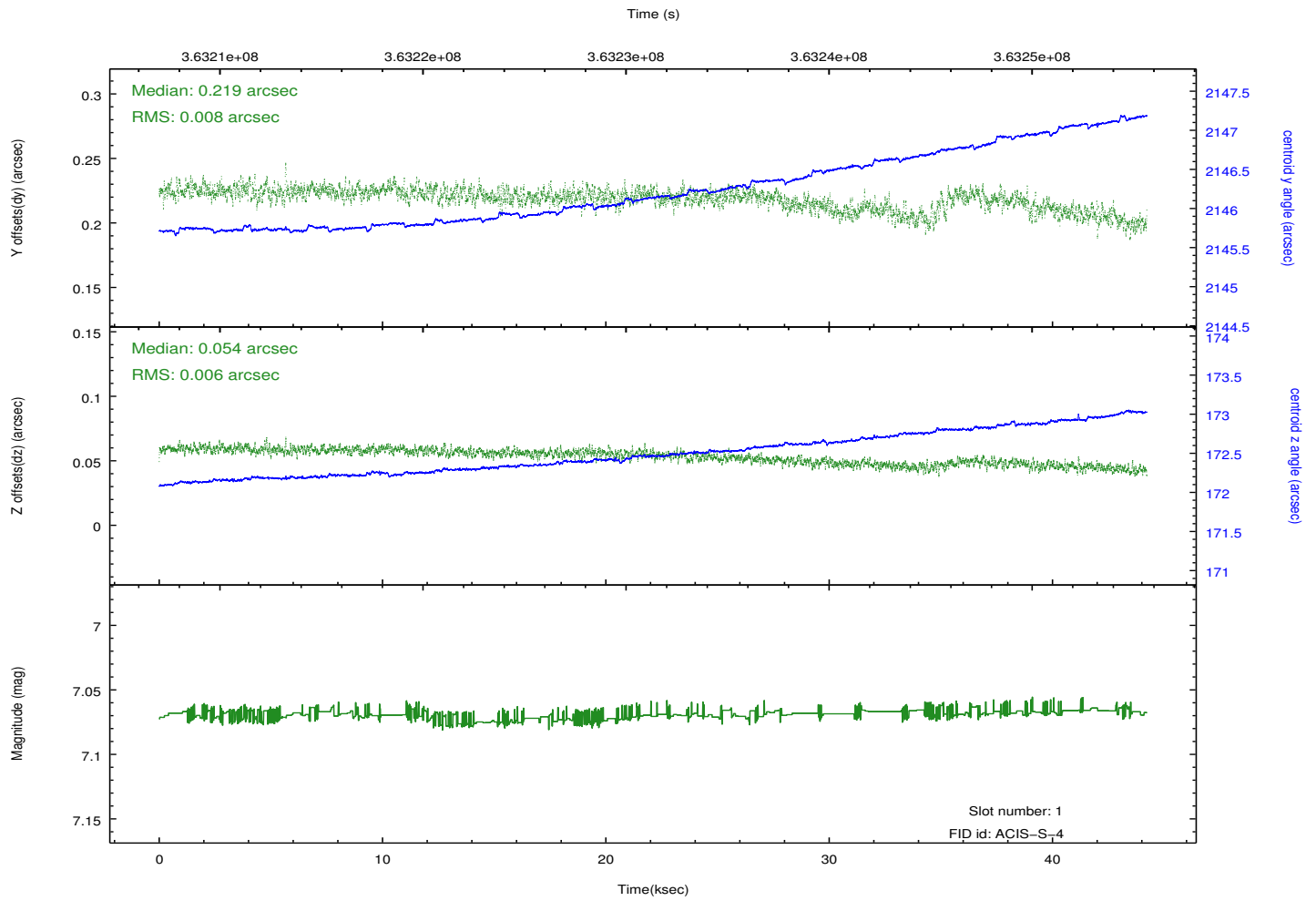
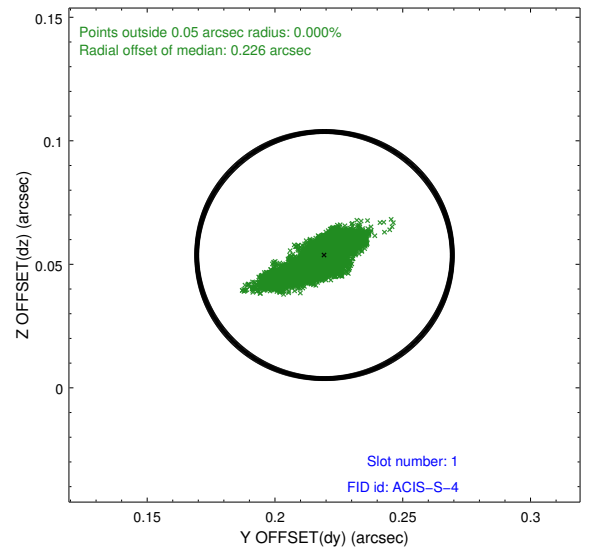
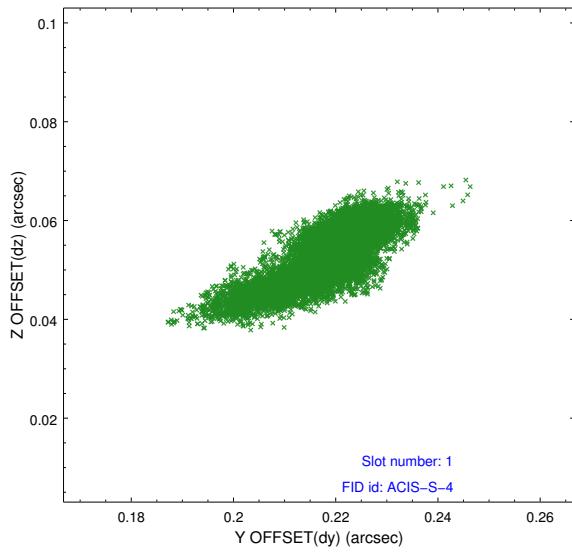


2.5 FID Slots

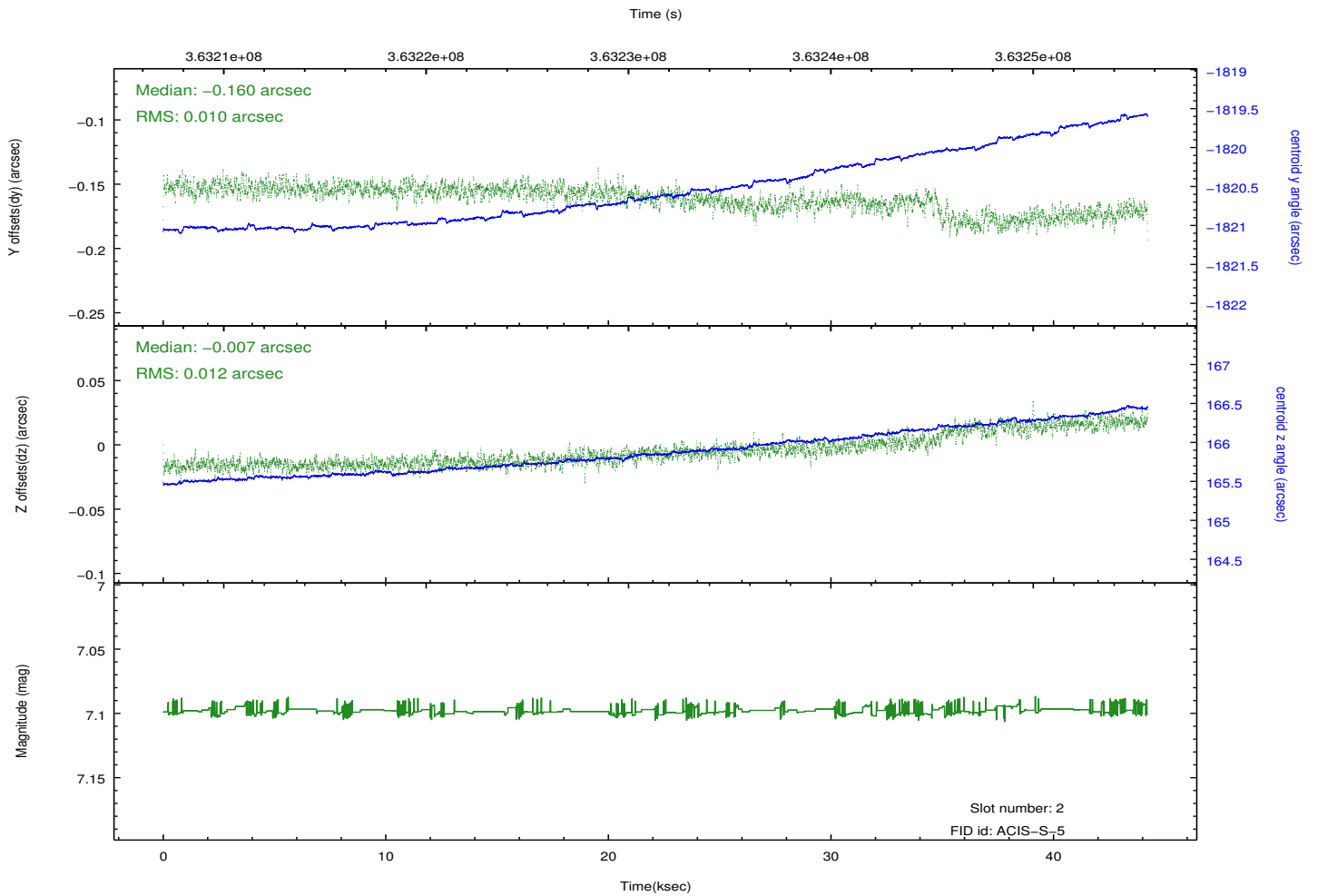
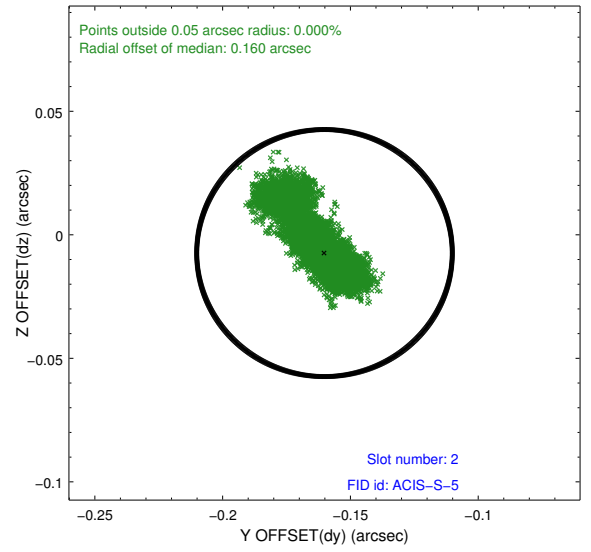
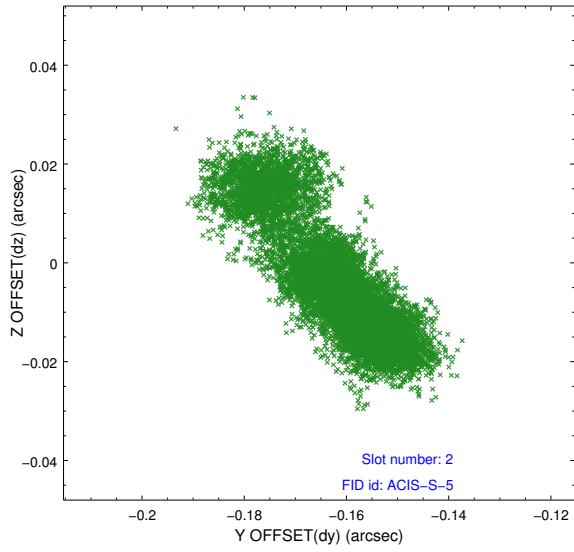
2.5.1 Slot 0



2.5.2 Slot 1



2.5.3 Slot 2



A Summary

A.1 Status

V&V Scientist	Beth Sundheim
V&V Date (YYYY-MM-DD)	2012.06.13
V&V Edition	1
V&V Disposition and Status	OK
V&V Charge Time	44.2184003

A.2 Comments