

V&V Reference Report

L2 ASCDS Version : 8.4.4

Observation 10500 - L2 Version 3
Chandra X-Ray Center

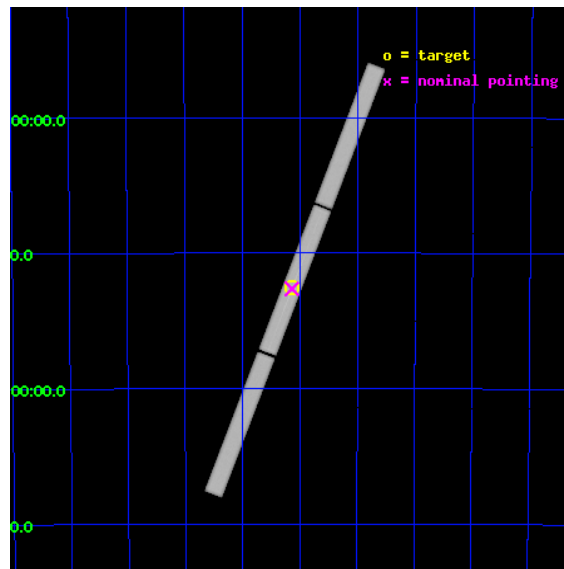
L2 Processing Date : Aug 12 2012

Contents

1	Front	2
2	OBI	3
2.1	OBI	3
2.1.1	Images	3
2.1.2	Parameters	4
2.1.3	Events	4
2.2	Compared Parameters	5
2.3	Aspect	6
2.4	Star Slots	9
2.4.1	Slot 3	9
2.4.2	Slot 4	10
2.4.3	Slot 5	11
2.4.4	Slot 6	12
2.4.5	Slot 7	13
2.5	FID Slots	14
2.5.1	Slot 0	14
2.5.2	Slot 1	15
2.5.3	Slot 2	16
3	Gratings	17
3.1	LETG Arm	17
A	Summary	19
A.1	Status	19
A.2	Comments	19

1 Front

seq_num	900868	Sequence number
obs_id	10500	Observation id
title	A Benchmark Observation of the Warm-Hot Intergalactic Medium	Propo
observer	Dr. Taotao Fang	Principal investigator
object	H 2356-309	Source name
ra_targ	359.782917	Observer's specified target RA [deg]
dec_targ	-30.628056	Observer's specified target Dec [deg]
ra_nom	359.7848578622	Nominal RA [deg]
dec_nom	-30.632552950167	Nominal Dec [deg]
roll_nom	291.06832906491	Nominal Roll [deg]
revision	3	Processing version of data
ontime	16151.950798631	[s]
livetime	15985.047465162	Ontime multiplied by DTCOR
l2events	1414620	Number of level 2 events

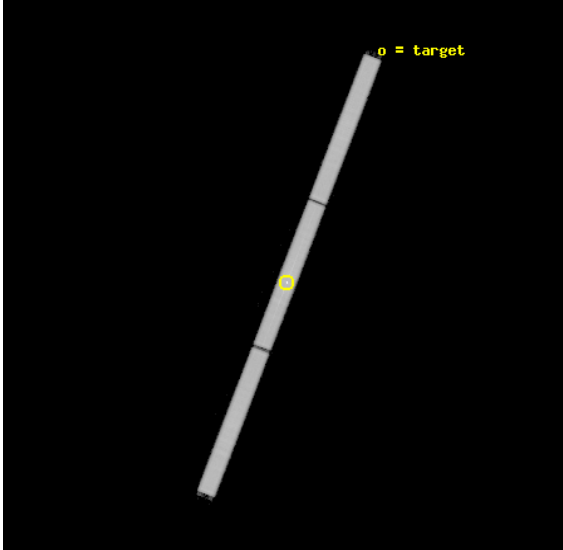


2 OBI

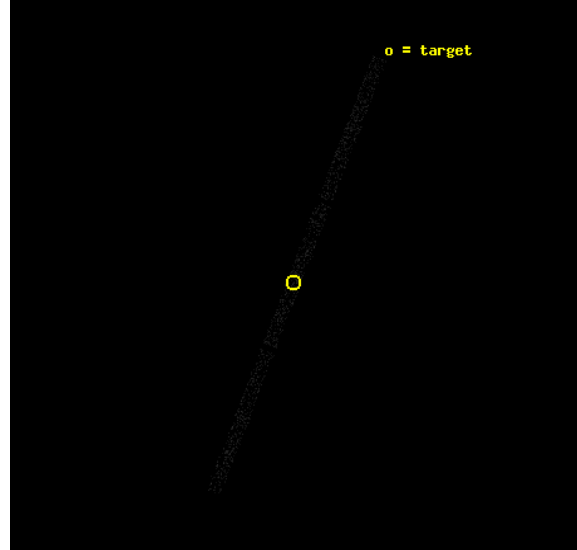
2.1 OBI

2.1.1 Images

Level 1 Image



Level 1 Bad Events



2.1.2 Parameters

obi_num	1	Obi number	sched_exp_time	16000.000000	[s] Scheduled observation exposure time
ascdsver	8.4.5	Processing system revision	ontime	16151.950798631	[s]
caldbver	4.5.1.1	 	l1events	1866030	Number of level 1 events
date	2012-08-13T00:44:35	Date and time of file creation			
revision	3	Processing version of data			

2.1.3 Events

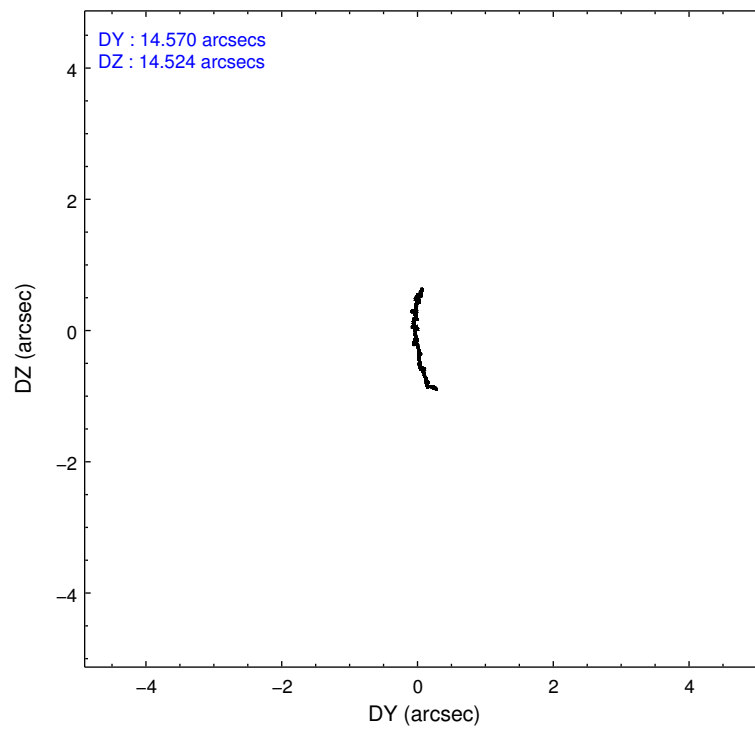
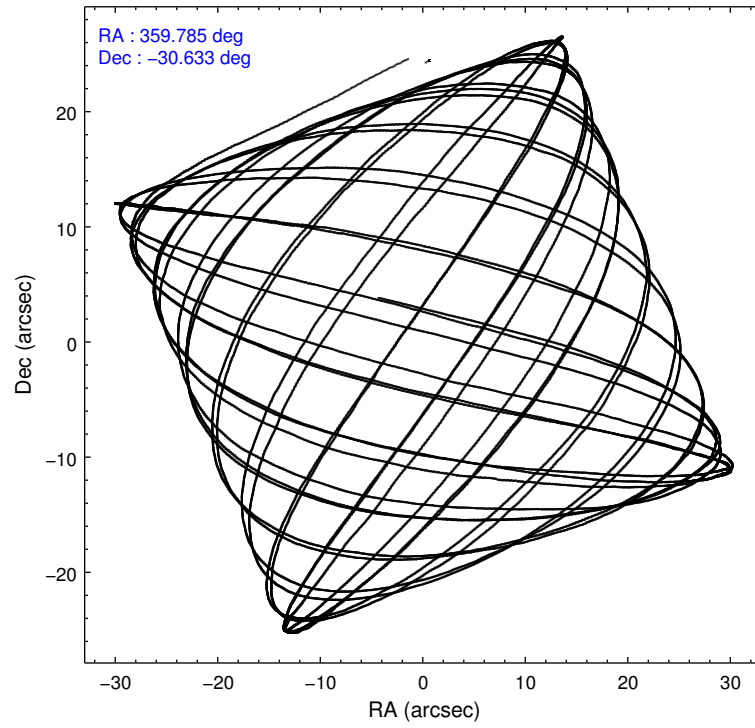
Level 1 Events

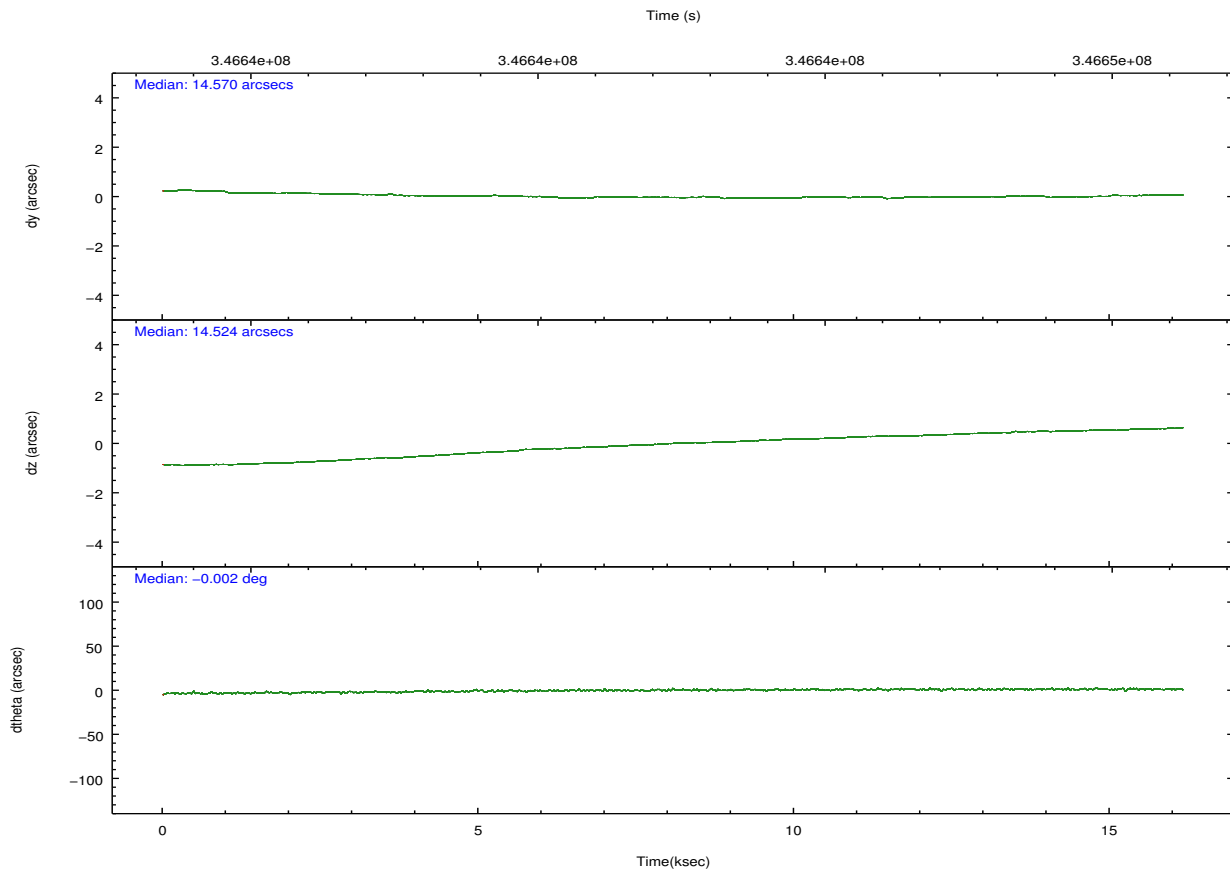
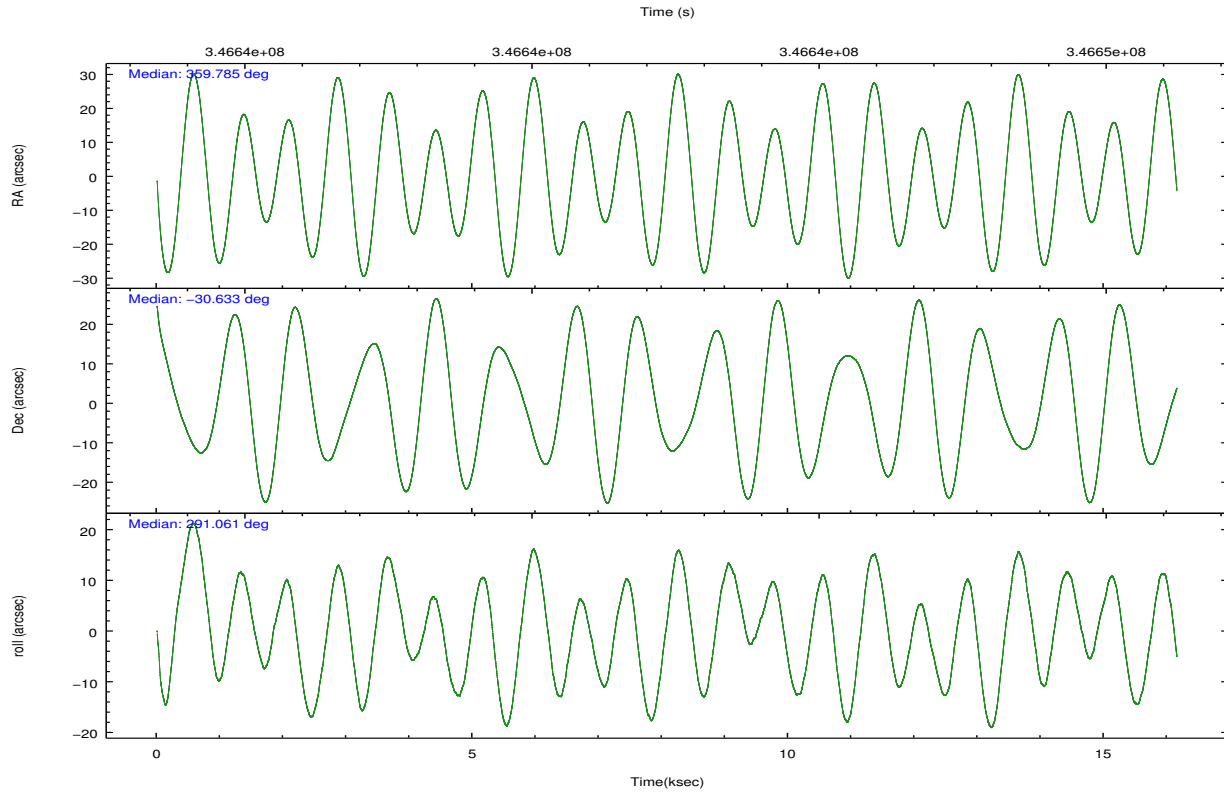
	segment 1	segment 2	segment 3
level 1 events	616407	630550	619073
rejected events	9560	9674	9567
rejected %	1%	1%	1%

2.2 Compared Parameters

Parameter	Planned	Actual	Parameter	Planned	Actual
Instrument	HRC	HRC	Obspar format version number	7	7
Detector	HRC-S	HRC-S	Obspar file type	PREDICTED	ACTUAL
Grating	LETG	LETG	Obspar update status	NONE	UPDATED
Data mode	OBSERVING	OBSERVING			
Observation mode	POINTING	POINTING			
[deg] Pointing RA	359.757870	359.7848578621962			
[deg] Pointing Dec	-30.615612	-30.63255295016658			
[deg] Pointing Roll	290.987247	291.0683290649066			
[mm] SIM focus pos	-1.429586	-1.428180813131781			
[mm] SIM defocus	0.1037507710433287	0.1051558262725154			
[mm] SIM translation stage pos	250.455976	250.466033080201			
[mm] SIM translation stage offset	0	-0.01005468664627074			
[s] Observation start time (MET)	346634441.184000	346633268.89688			
Observation start date	2008-12-25T23:19:36	2008-12-25T23:01:08			
[s] Observation end time (MET)	346650441.184000	346651391.41027			
Observation end date	2008-12-26T03:46:16	2008-12-26T04:03:11			

2.3 Aspect



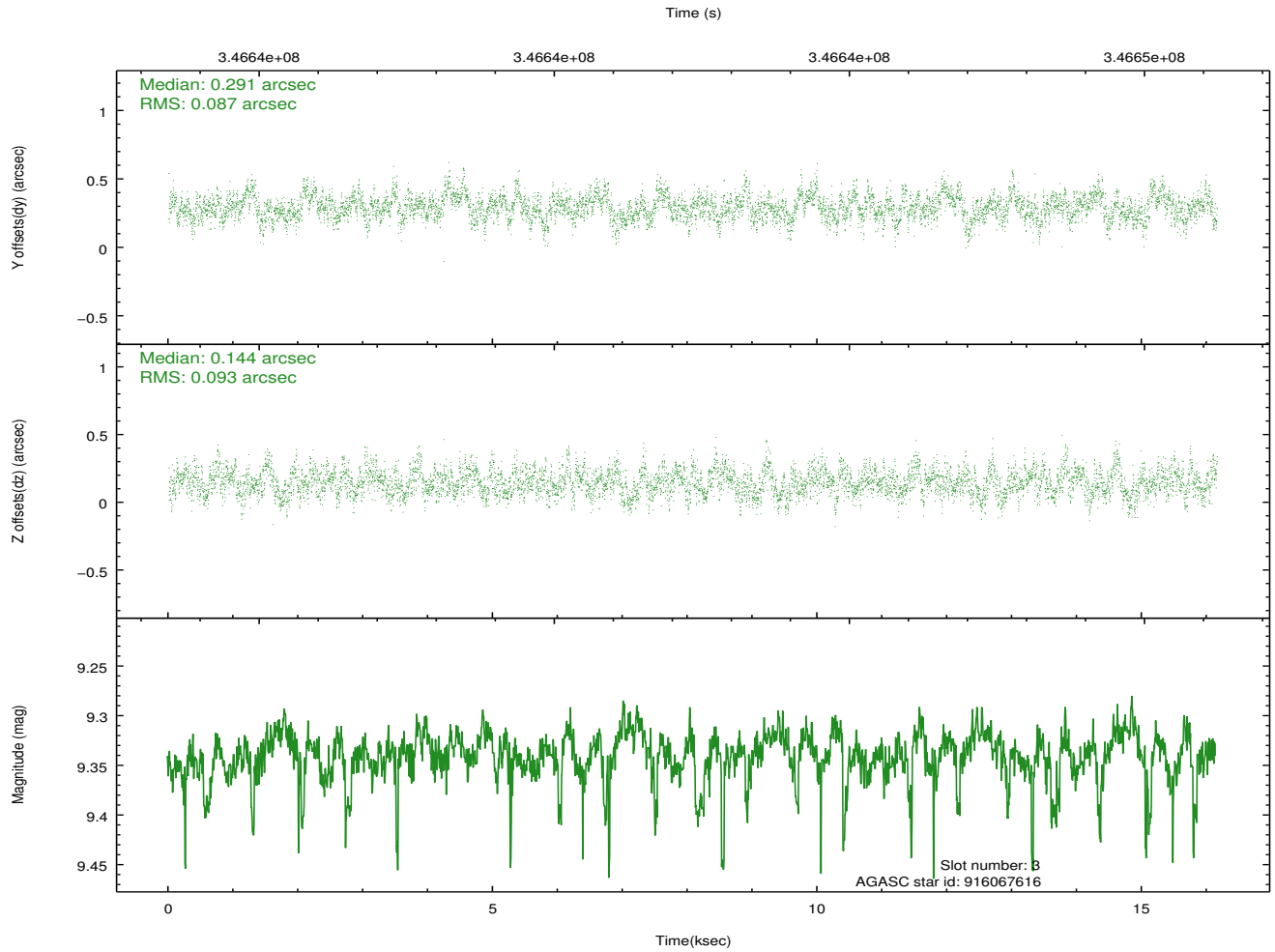
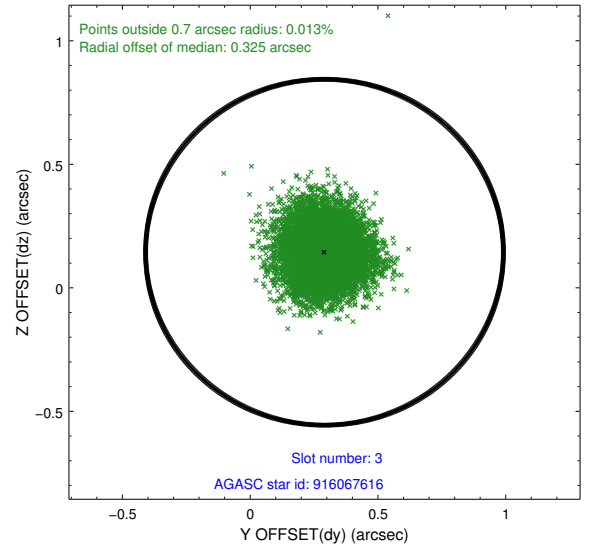
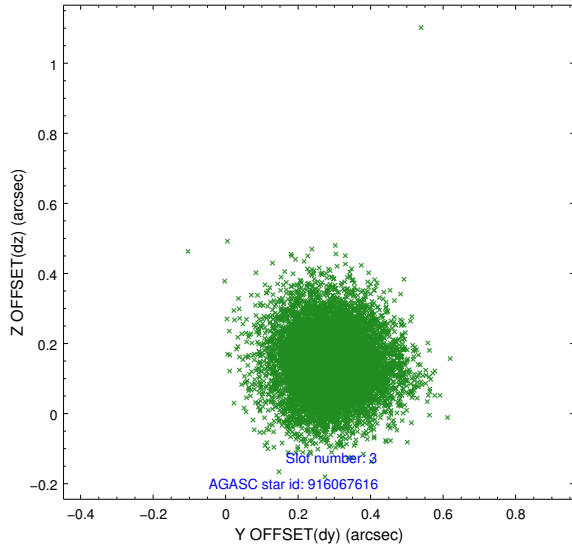


Slot Statistics

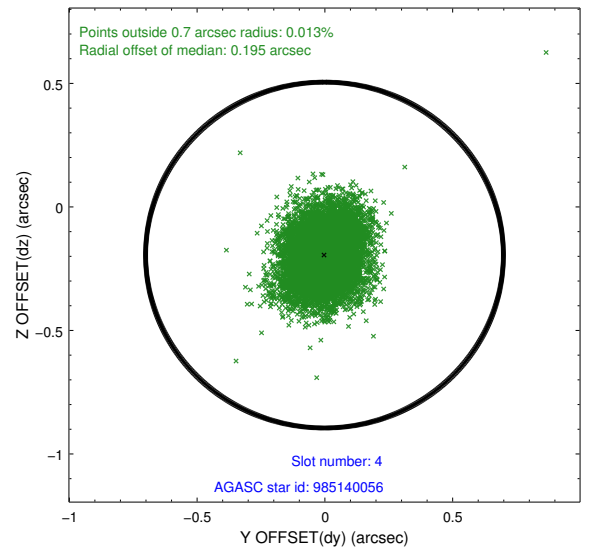
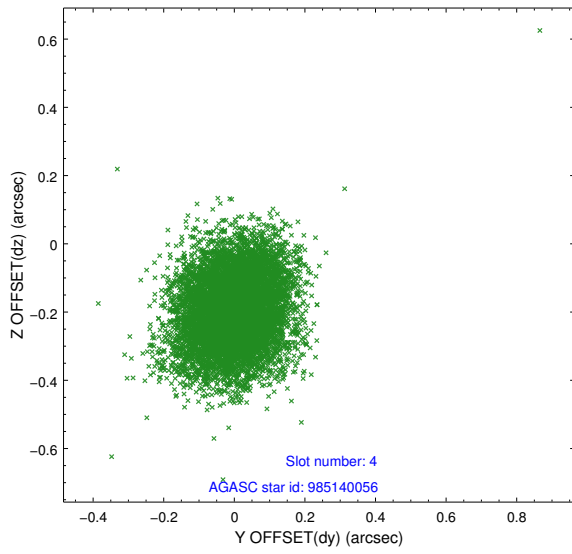
slot	status	id	mag	n_pts	med_dy	med_dz	dr1	dr2	ra	dec	mean_y	mean_z
0	FID	HRC-S-1	7.06	3941	0.083	-0.231	0.013	0.030	0.000000	0.000000	-1169.00	-463.33
1	FID	HRC-S-2	7.03	3941	0.203	-0.111	0.005	0.010	0.000000	0.000000	1230.51	-456.00
2	FID	HRC-S-3	7.05	3941	0.104	0.040	0.013	0.029	0.000000	0.000000	-1171.37	566.35
3	GUIDE	916067616	9.34	7841	0.291	0.144	0.136	0.218	0.517191	-30.685226	1083.60	2102.88
4	GUIDE	985140056	9.54	7869	-0.002	-0.195	0.136	0.222	359.169544	-30.957024	502.20	-2137.19
5	GUIDE	985144184	10.05	7869	-0.081	-0.225	0.187	0.321	359.125461	-30.330052	-1657.87	-1468.69
6	GUIDE	985144448	10.20	7846	0.106	0.035	0.211	0.341	359.393147	-30.386787	-1172.92	-763.07
7	GUIDE	841221944	9.36	7871	-0.320	0.241	0.129	0.210	0.222626	-29.841894	-2078.69	2351.88

2.4 Star Slots

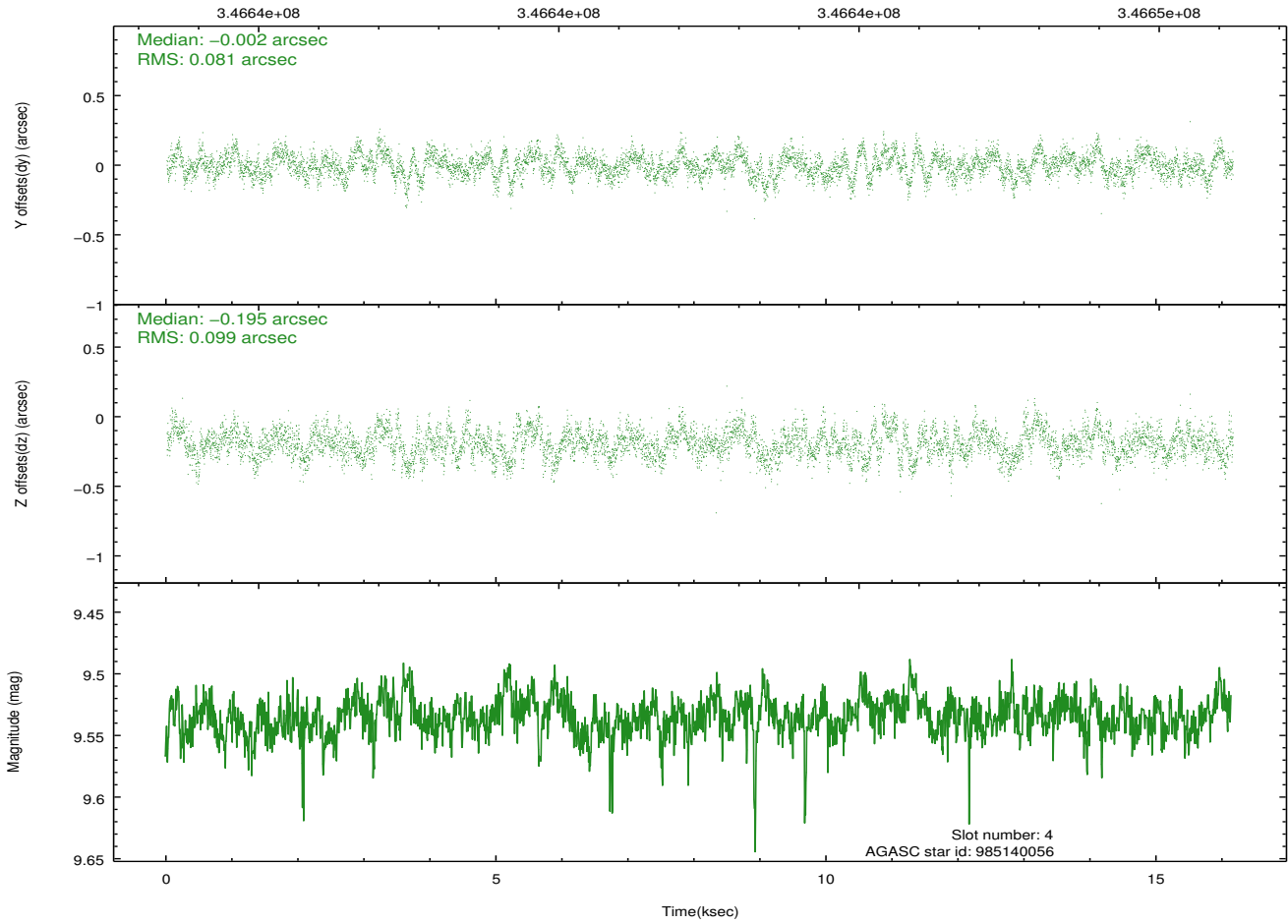
2.4.1 Slot 3



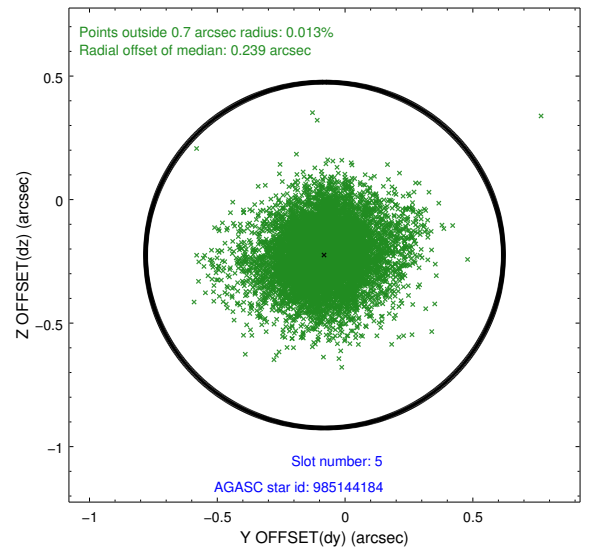
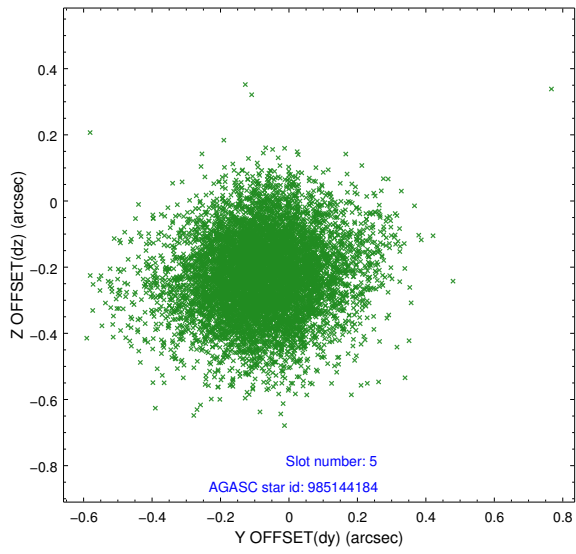
2.4.2 Slot 4



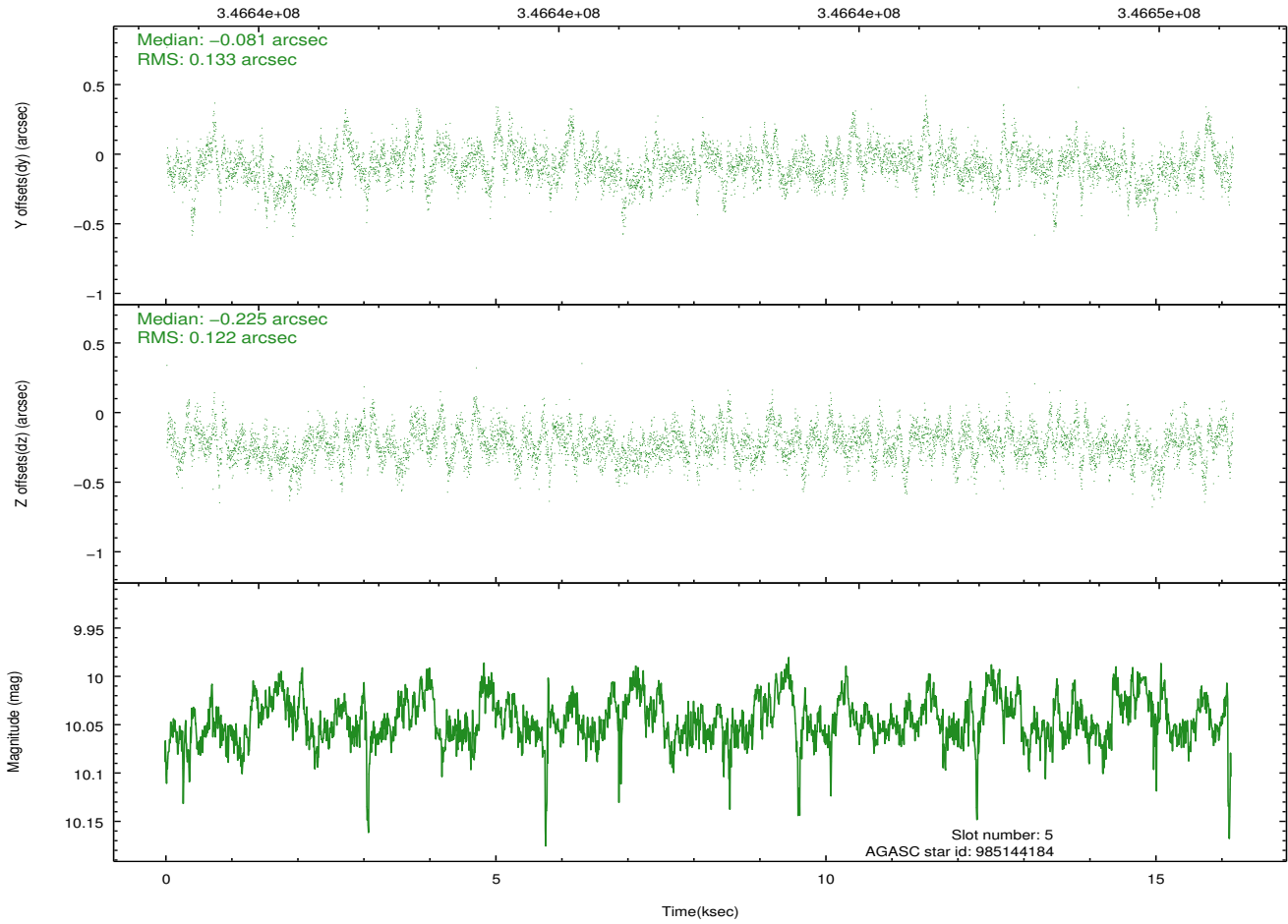
Time (s)



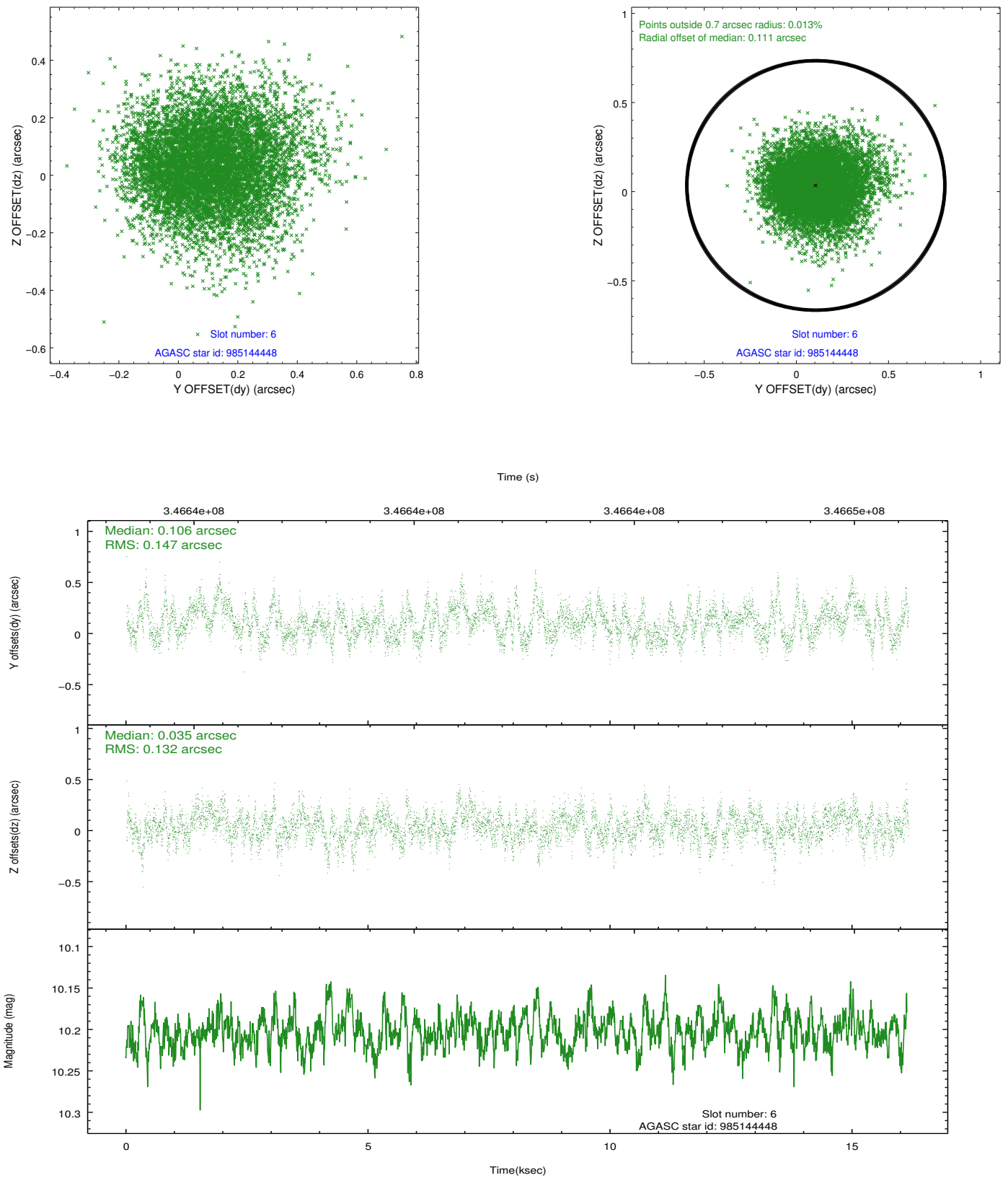
2.4.3 Slot 5



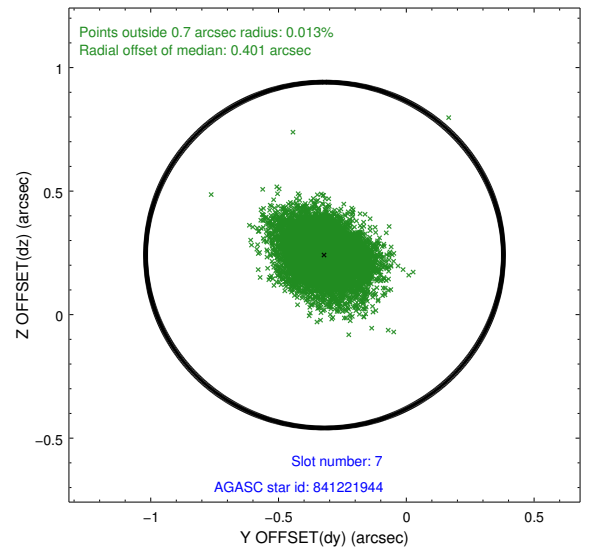
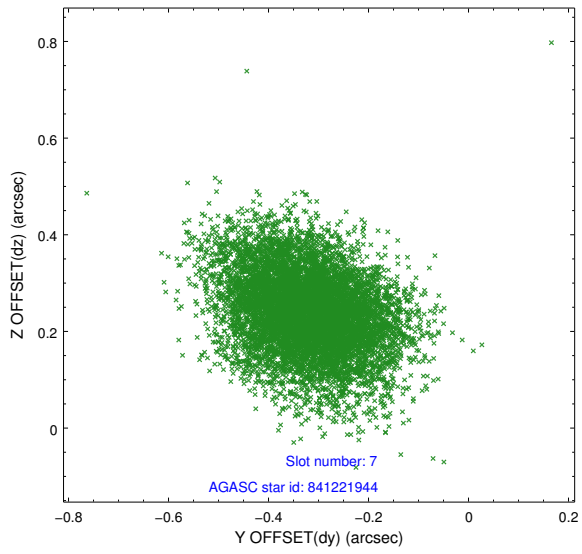
Time (s)



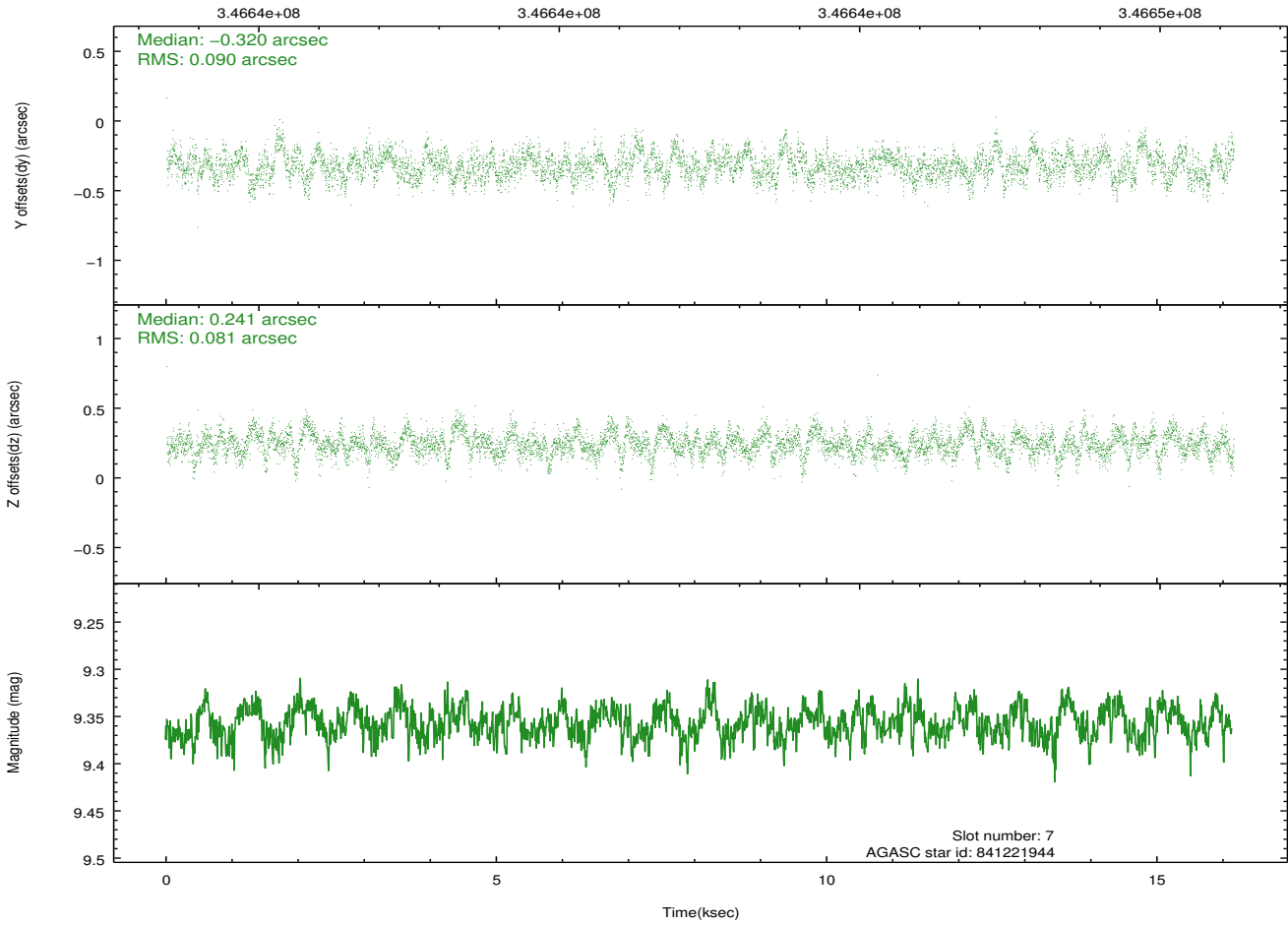
2.4.4 Slot 6



2.4.5 Slot 7

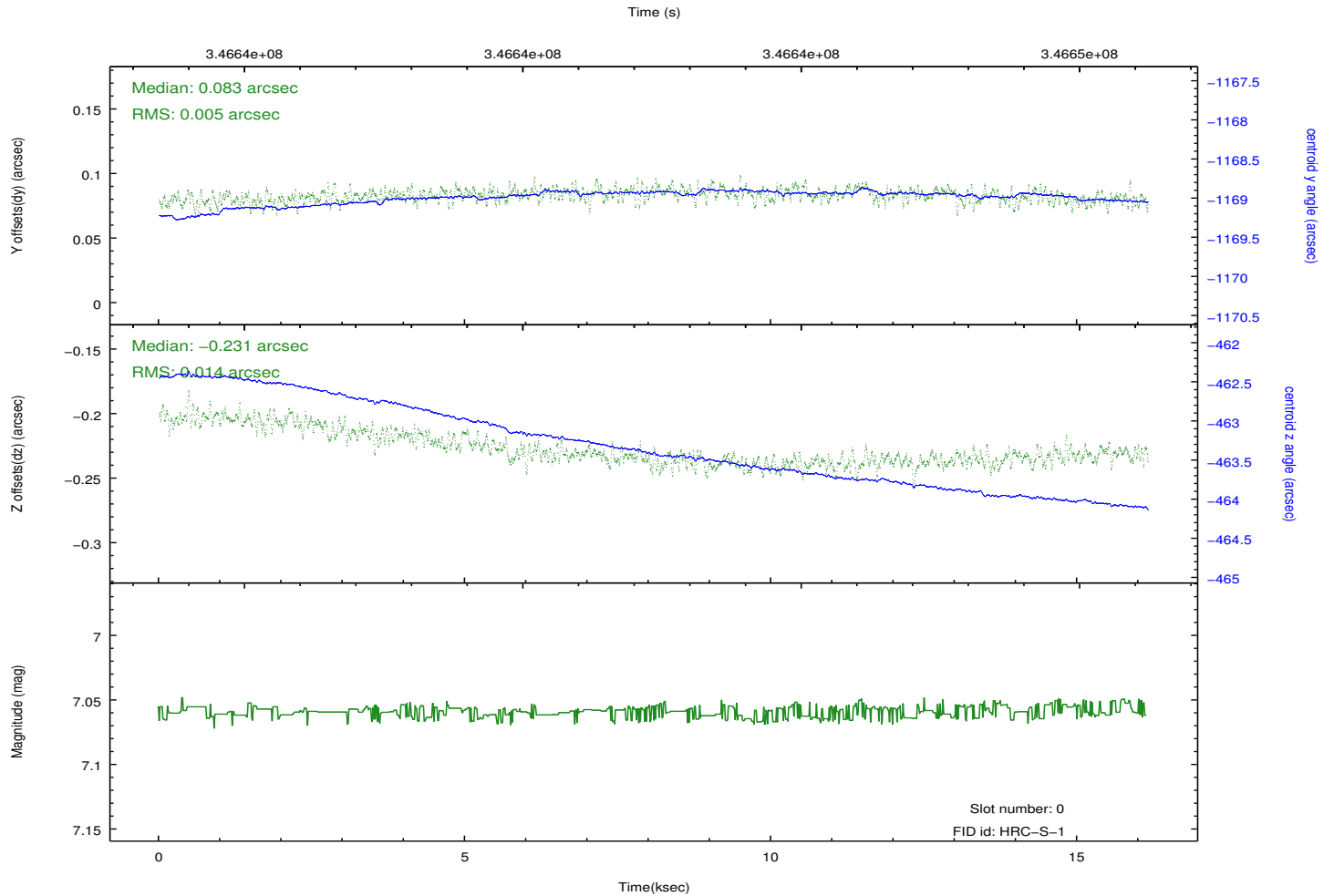
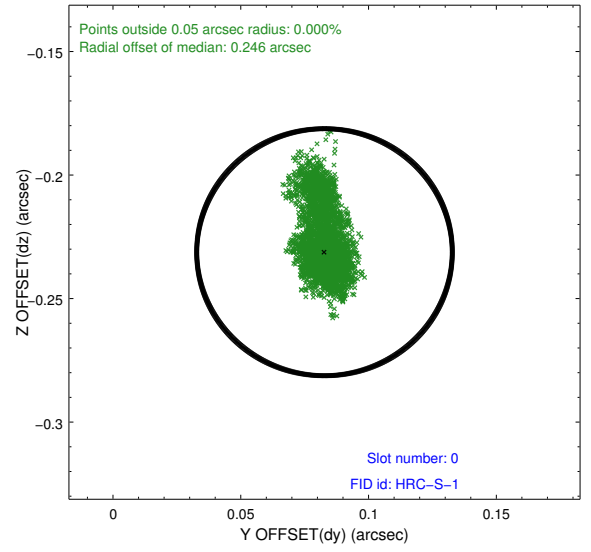
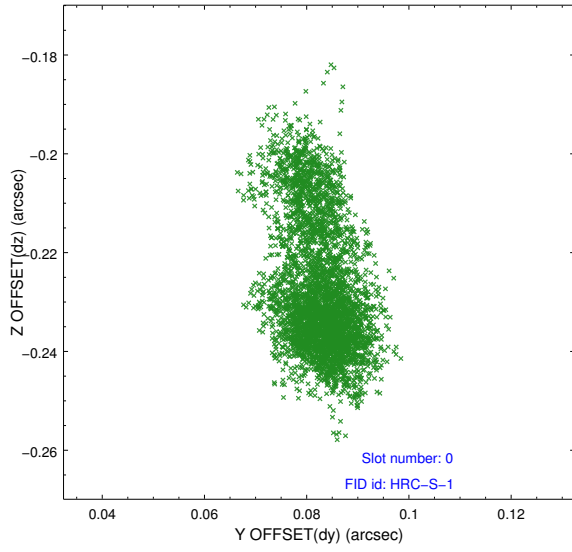


Time (s)

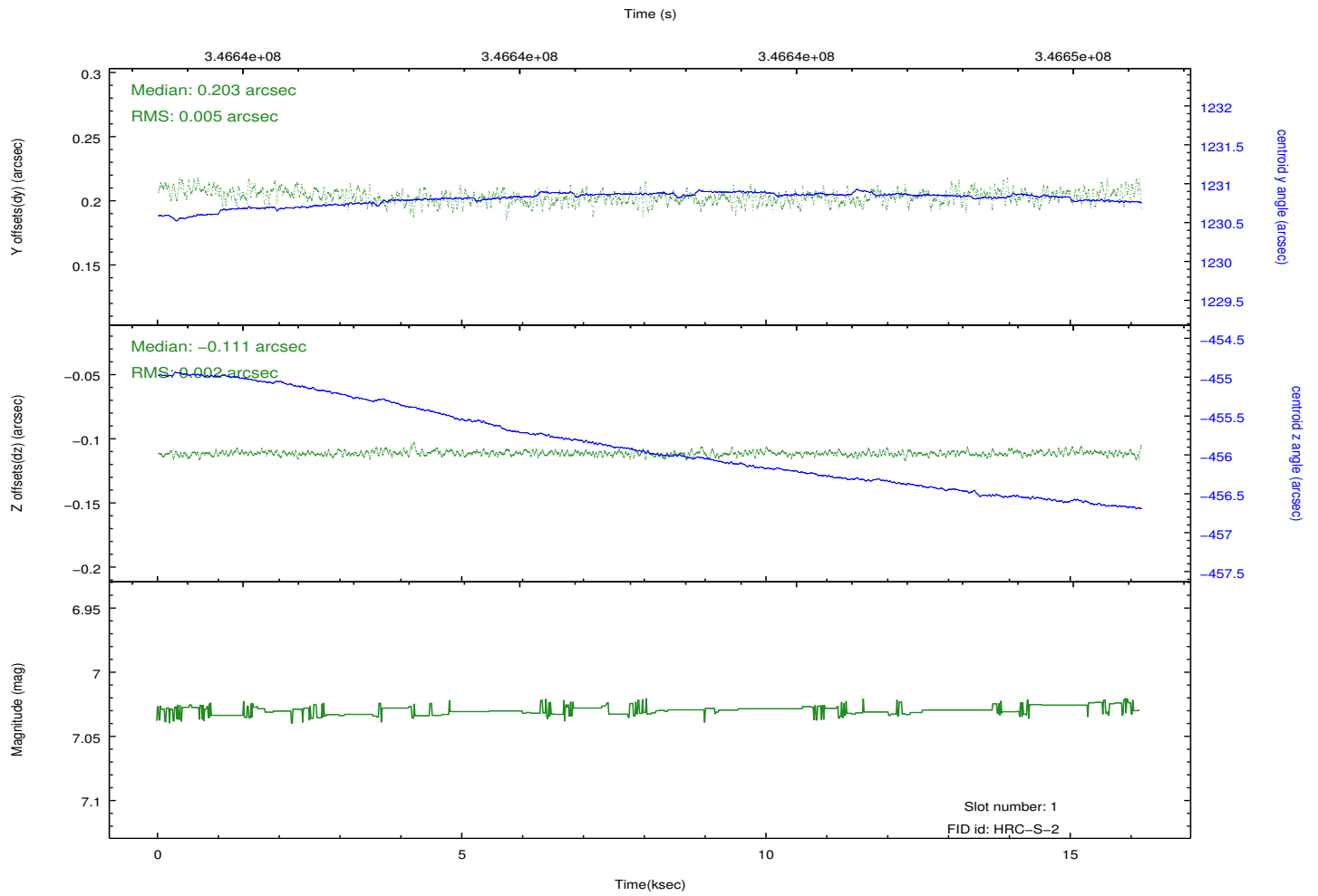
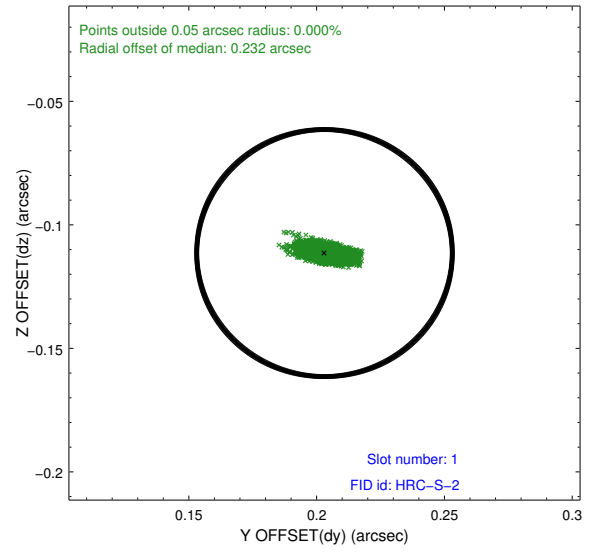
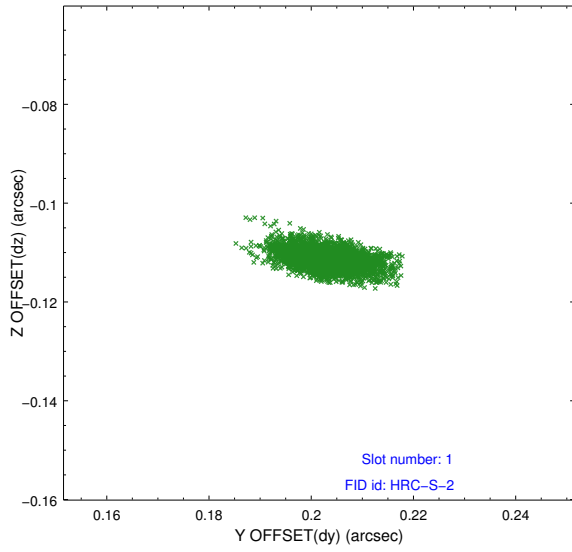


2.5 FID Slots

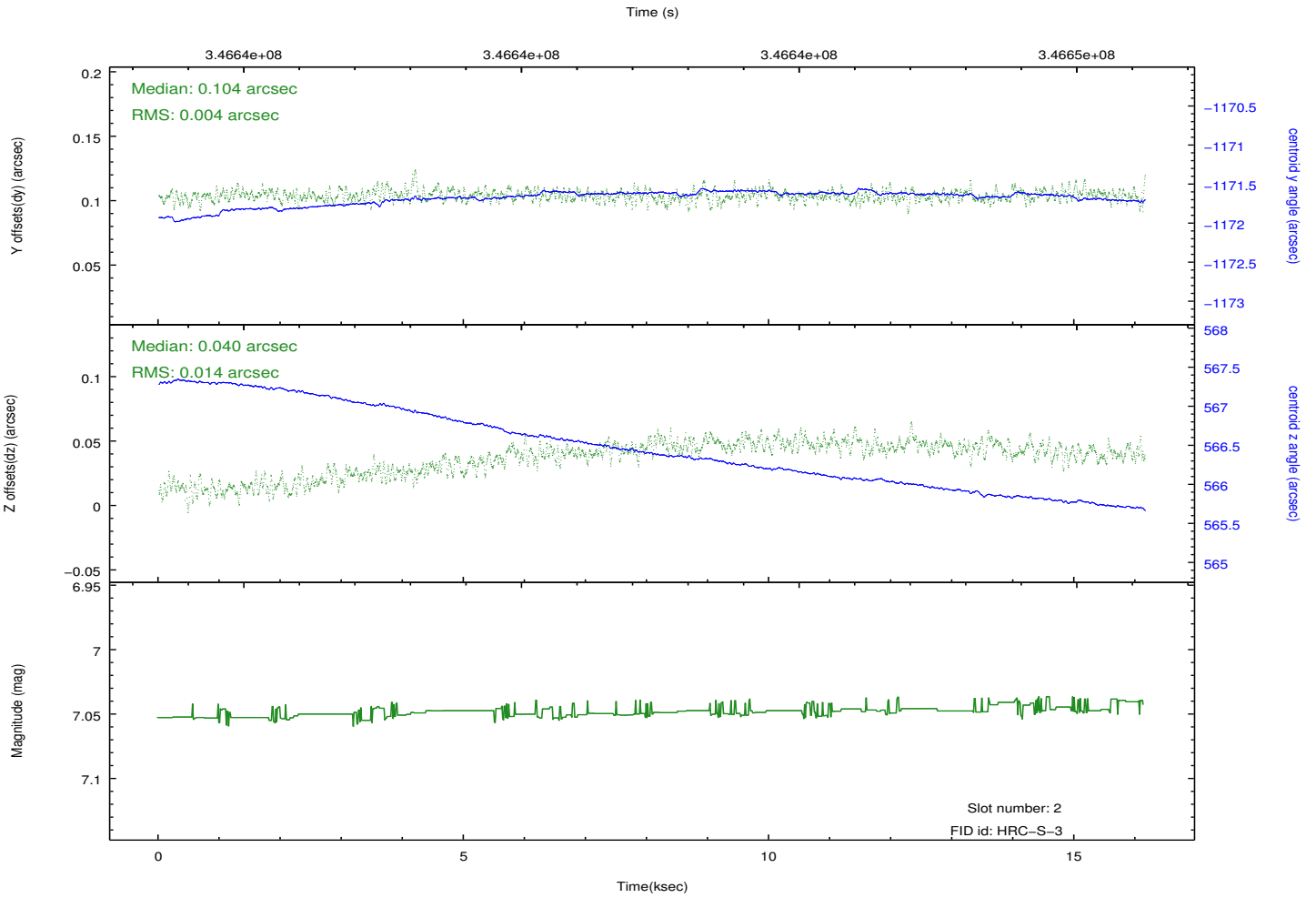
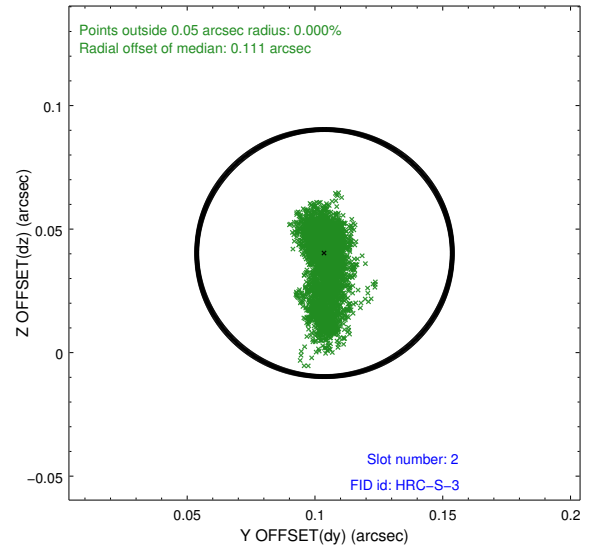
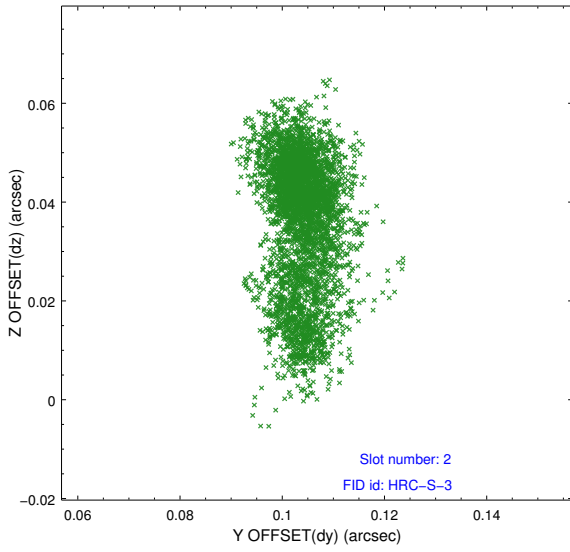
2.5.1 Slot 0



2.5.2 Slot 1

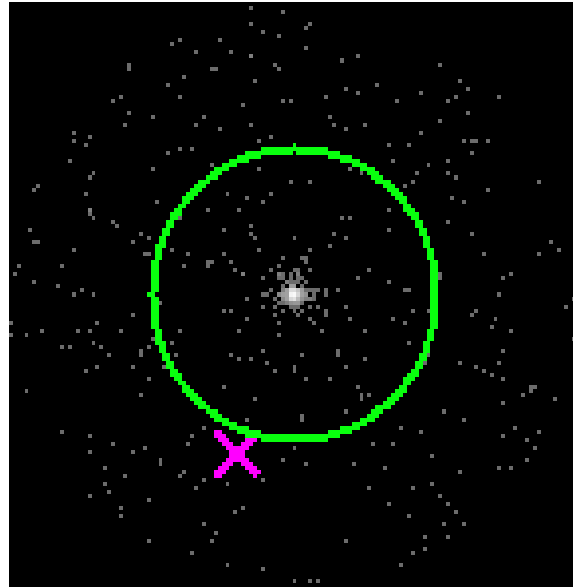


2.5.3 Slot 2



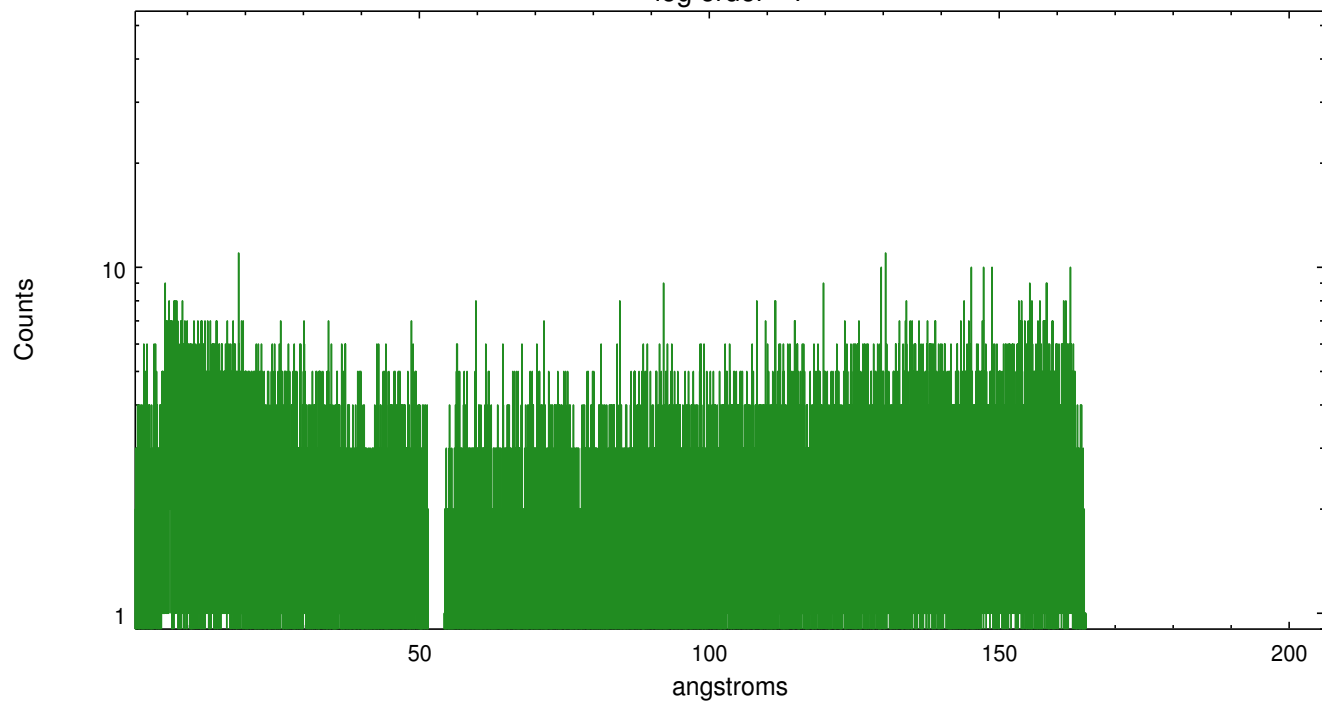
3 Gratings

3.1 LETG Arm

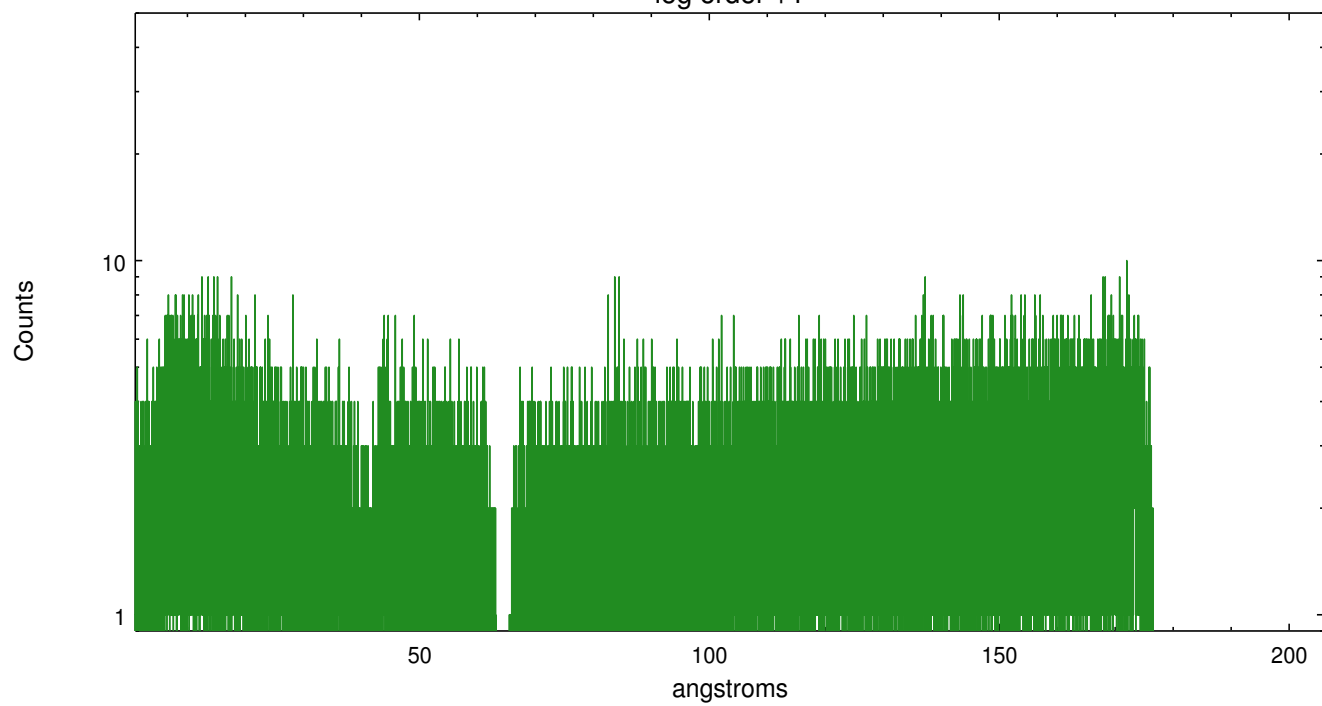


LETG Zero Order

leg order -1



leg order +1



A Summary

A.1 Status

V&V Scientist	Joy Nichols
V&V Date (YYYY-MM-DD)	2012.08.21
V&V Edition	1
V&V Disposition and Status	OK
V&V Charge Time	16.1519507

A.2 Comments