

V&V Reference Report

L2 ASCDS Version : 8.4.5

Observation 10530 - L2 Version 2
Chandra X-Ray Center

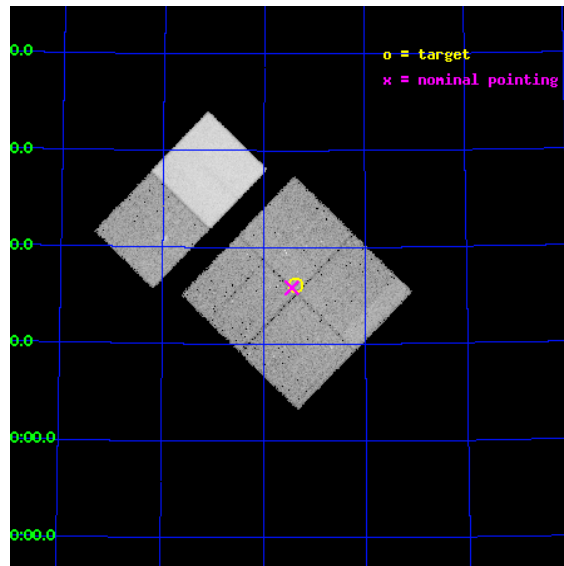
L2 Processing Date : Jun 7 2012

Contents

1	Front	2
2	OBI	3
2.1	OBI	3
2.1.1	Images	3
2.1.2	Bias	3
2.1.3	Parameters	4
2.1.4	Events	4
2.2	Compared Parameters	5
2.3	Aspect	6
2.4	Star Slots	9
2.4.1	Slot 3	9
2.4.2	Slot 4	10
2.4.3	Slot 5	11
2.4.4	Slot 6	12
2.4.5	Slot 7	13
2.5	FID Slots	14
2.5.1	Slot 0	14
2.5.2	Slot 1	15
2.5.3	Slot 2	16
A	Summary	17
A.1	Status	17
A.2	Comments	17

1 Front

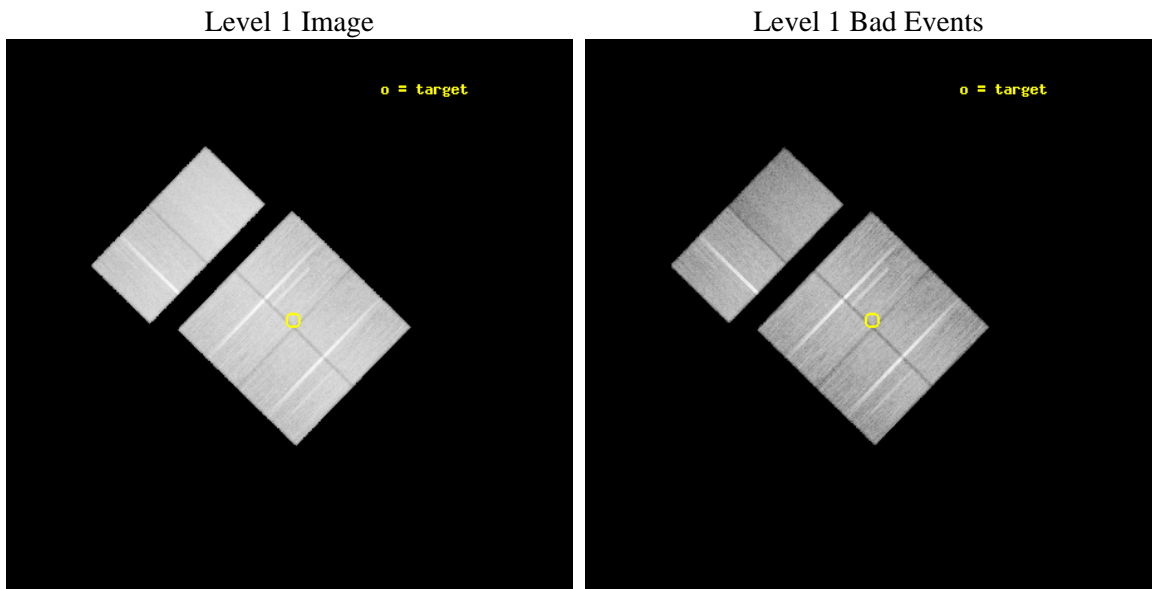
seq_num	600723	Sequence number
obs_id	10530	Observation id
title	The Baryons Content of the Most Massive Spiral Galaxy	Proposal tit
observer	Dr. Joel Bregman	Principal investigator
object	NGC 1961	Source name
dtycycle	0	
cycle	P	events from which exps? Prim/Second/Both
ra_targ	85.84228	Observer's specified target RA [deg]
dec_targ	69.267728	Observer's specified target Dec [deg]
ra_nom	85.862353990844	Nominal RA [deg]
dec_nom	69.263860507012	Nominal Dec [deg]
roll_nom	314.18991644327	Nominal Roll [deg]
revision	2	Processing version of data
ontime	32937.517956734	Sum of GTIs [s]
liveltime	32520.443271773	Livetime [s]
ontime0	32940.758887112	Sum of GTIs [s]
ontime1	32940.758926928	Sum of GTIs [s]
ontime2	32937.517916799	Sum of GTIs [s]
ontime3	32937.517956734	Sum of GTIs [s]
ontime6	32940.758887112	Sum of GTIs [s]
ontime7	32943.999877334	Sum of GTIs [s]
l2events	264265	Number of level 2 events



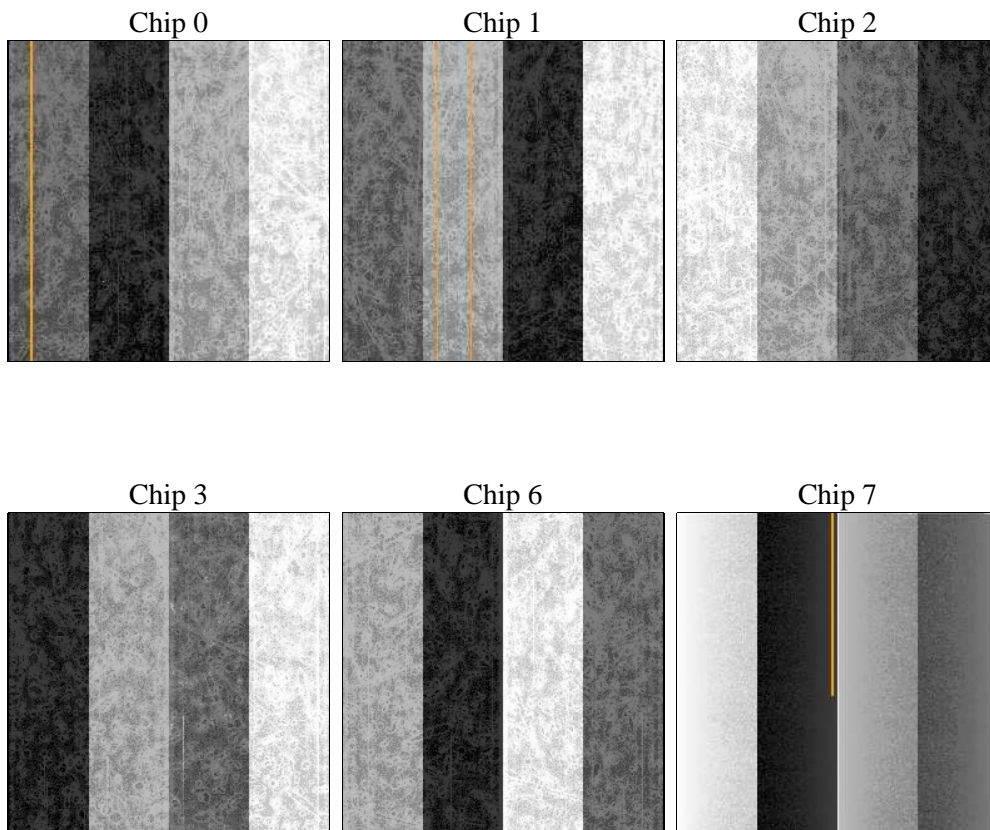
2 OBI

2.1 OBI

2.1.1 Images



2.1.2 Bias



2.1.3 Parameters

obi_num	0	Obi number	sched_exp_time	33186.071000	[s] Scheduled observation exposure time
ascdsver	8.4.5	Processing system revision	ontime	32937.517956734	Sum of GTIs [s]
caldbver	4.4.10	 	ontime0	32940.758887112	Sum of GTIs [s]
date	2012-06-07T00:35:35	Date and time of file creation	ontime1	32940.758926928	Sum of GTIs [s]
revision	2	Processing version of data	ontime2	32937.517916799	Sum of GTIs [s]
			ontime3	32937.517956734	Sum of GTIs [s]
			ontime6	32940.758887112	Sum of GTIs [s]
			ontime7	32943.999877334	Sum of GTIs [s]
			l1events	1725039	Number of level 1 events

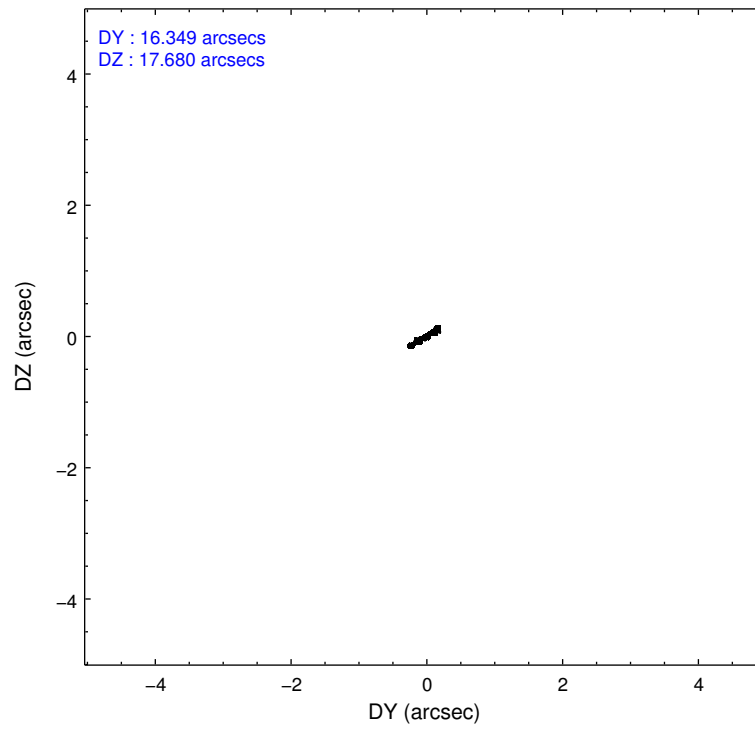
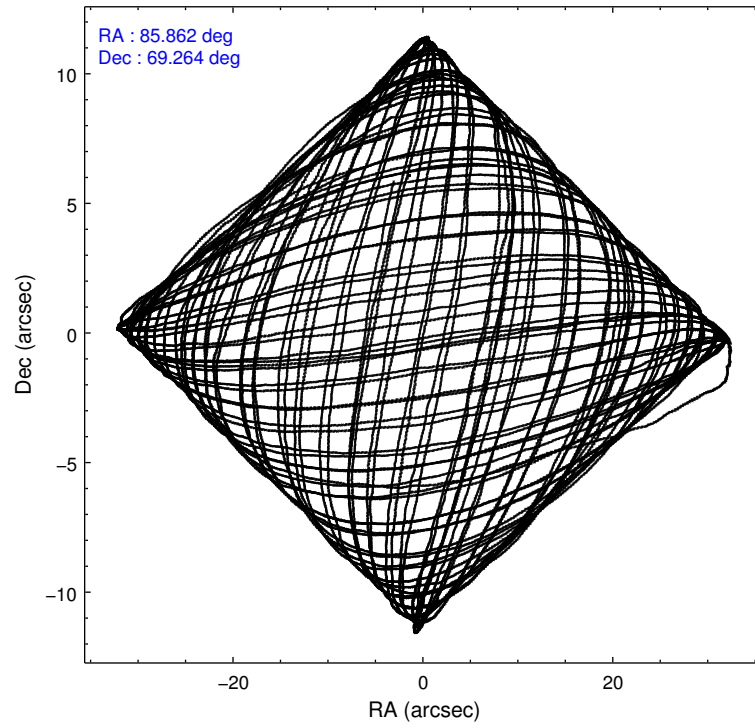
2.1.4 Events

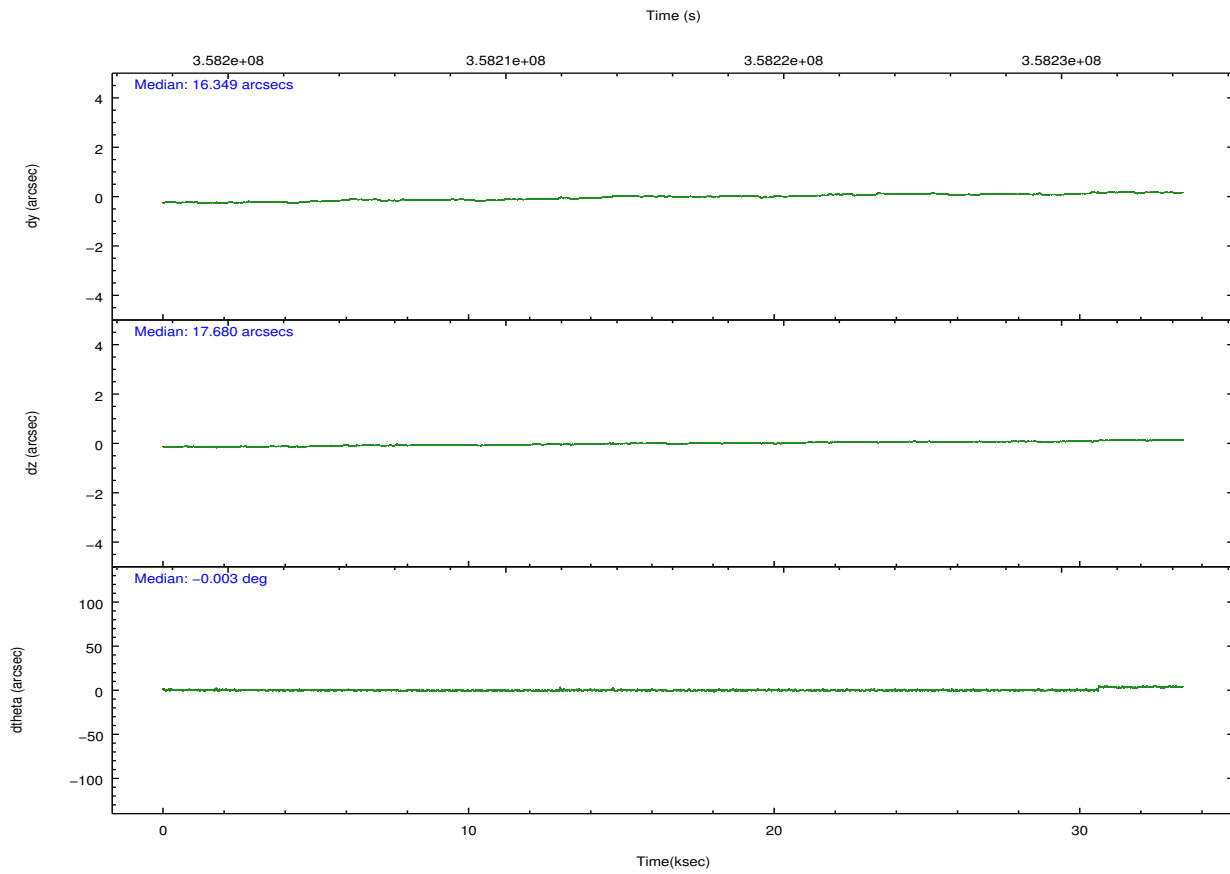
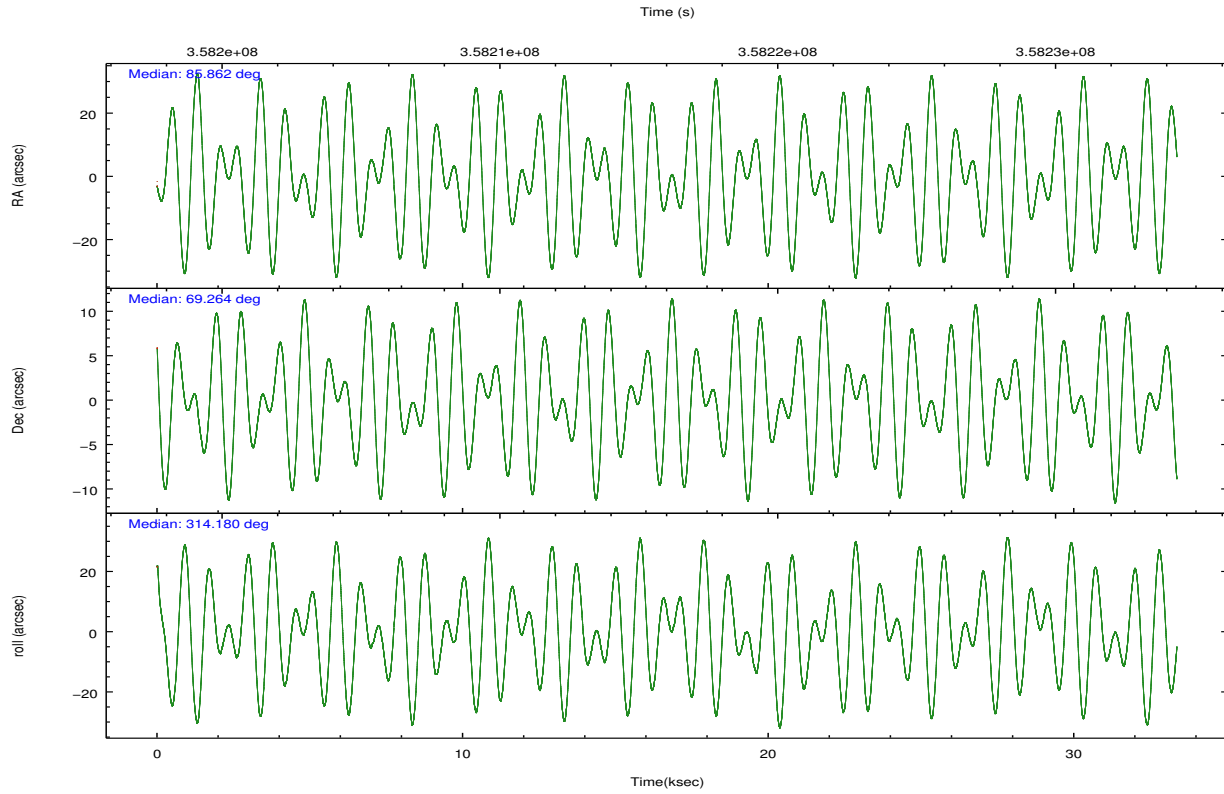
	ccd 0	ccd 1	ccd 2	ccd 3	ccd 6	ccd 7		ccd 0	ccd 1	ccd 2	ccd 3	ccd 6	ccd 7
level 1 events	268480	266722	298861	277975	289903	323098	grade 0 events	9968	11460	10090	9574	10579	13356
rejected events	239902	234770	270783	250850	259518	175995		3%	4%	3%	3%	3%	4%
rejected %	89%	88%	90%	90%	89%	54%	grade 1 events	134	134	165	160	153	435
								0%	0%	0%	0%	0%	0%
							grade 2 events	7041	7323	6975	6136	6911	30005
								2%	2%	2%	2%	2%	9%
							grade 3 events	3091	3347	2892	2962	3163	13312
								1%	1%	0%	1%	1%	4%
							grade 4 events	2864	3297	2953	3040	3235	13225
								1%	1%	0%	1%	1%	4%
							grade 5 events	10095	11192	9670	11801	11978	33910
								3%	4%	3%	4%	4%	10%
							grade 6 events	5618	6529	5169	5417	6499	77223
								2%	2%	1%	1%	2%	23%
							grade 7 events	229669	223440	260947	238885	247385	141632
								85%	83%	87%	85%	85%	43%

2.2 Compared Parameters

Parameter	Planned	Actual	Parameter	Planned	Actual
Instrument	ACIS	ACIS	Obspar format version number	7	7
Detector	ACIS-012367	ACIS-012367	Obspar file type	PREDICTED	ACTUAL
Grating	NONE	NONE	Obspar update status	NONE	UPDATED
Data mode	VFAINT	VFAINT	CCD I0 on	Y	Y
Observation mode	POINTING	POINTING	CCD I1 on	Y	Y
[deg] Pointing RA	85.787518	85.86235399084435	CCD I2 on	Y	Y
[deg] Pointing Dec	69.271230	69.26386050701211	CCD I3 on	Y	Y
[deg] Pointing Roll	314.051214	314.189916443273	CCD S0 on	N	N
[mm] SIM focus pos	-0.782348	-0.7809083437167272	CCD S1 on	N	N
[mm] SIM defocus	0	0.001439871863259334	CCD S2 on	O1	Y
[mm] SIM translation stage pos	-233.592463	-233.5874344608287	CCD S3 on	Y	Y
[mm] SIM translation stage offset	0	-0.005018542100998502	CCD S4 on	N	N
[s] Observation start time (MET)	358199518.184000	358199142.43351	CCD S5 on	N	N
Observation start date	2009-05-08T19:50:52	2009-05-08T19:45:42	Number of optional ACIS chips dropped	0	0
[s] Observation end time (MET)	358232704.184000	358232936.1727	On-chip summing requested	N	N
Observation end date	2009-05-09T05:03:58	2009-05-09T05:08:56	Subarray requested	NONE	NONE
Read mode	TIMED	TIMED	Alternating exposures requested	N	N
			[s] Primary exposure time	0.000000	3.2

2.3 Aspect



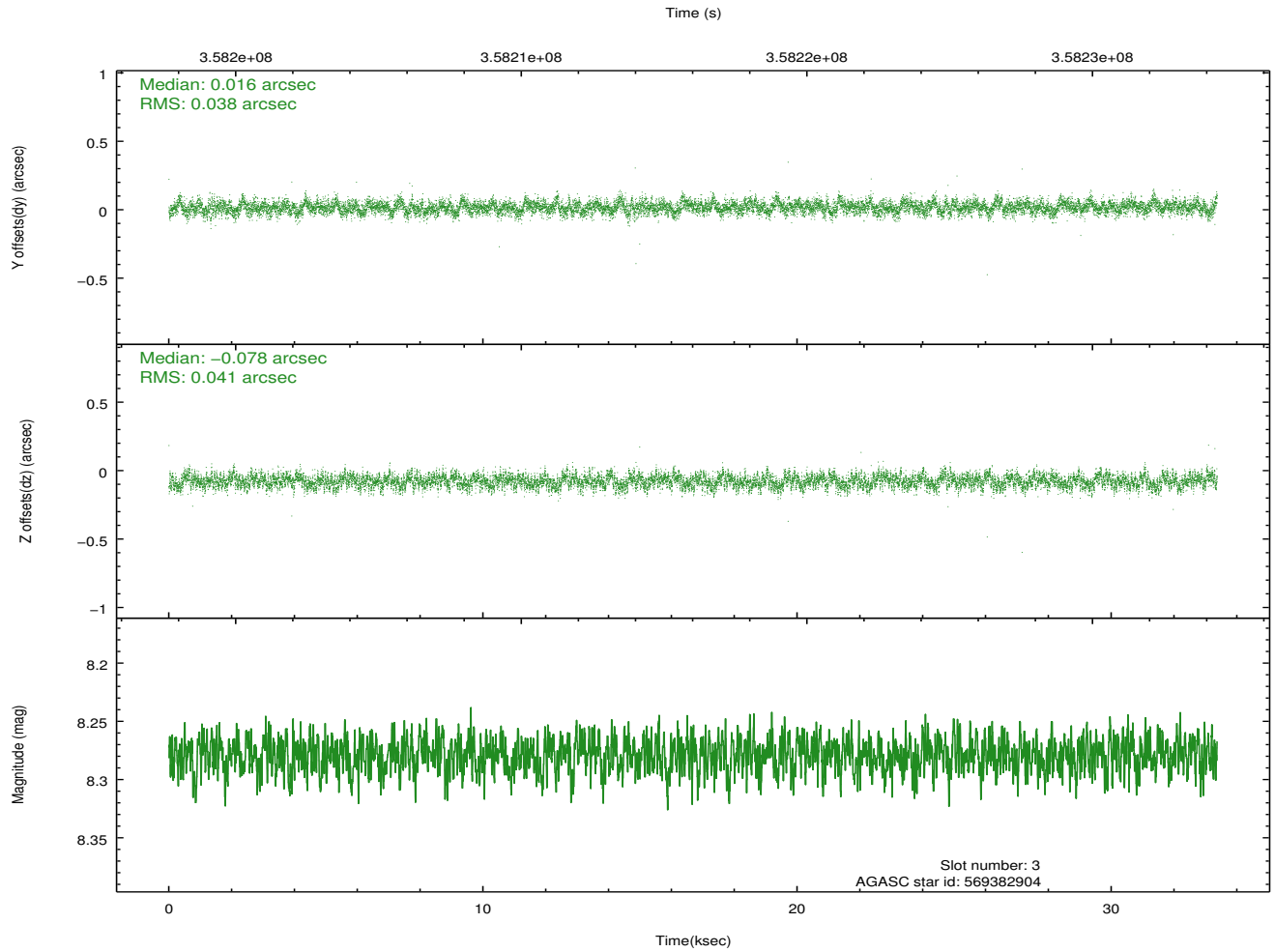
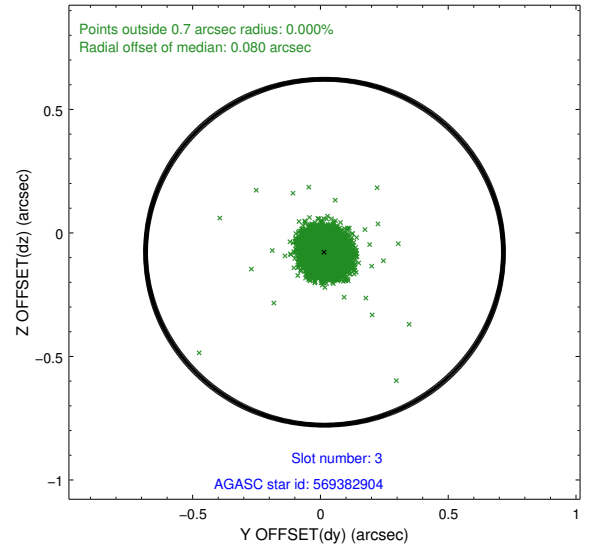
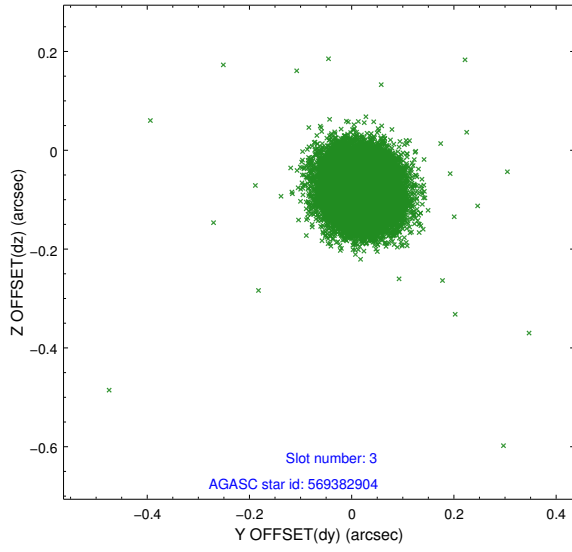


Slot Statistics

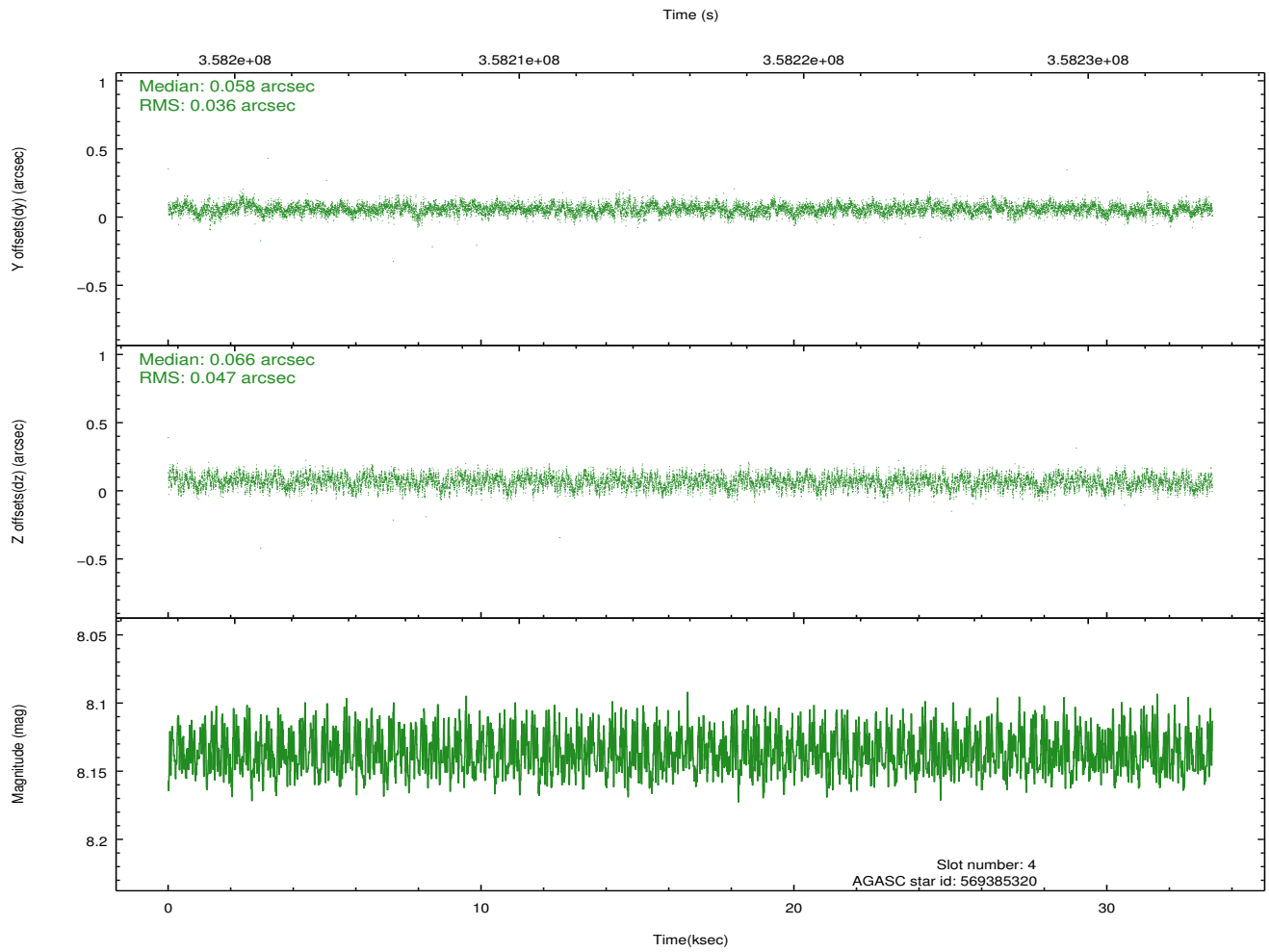
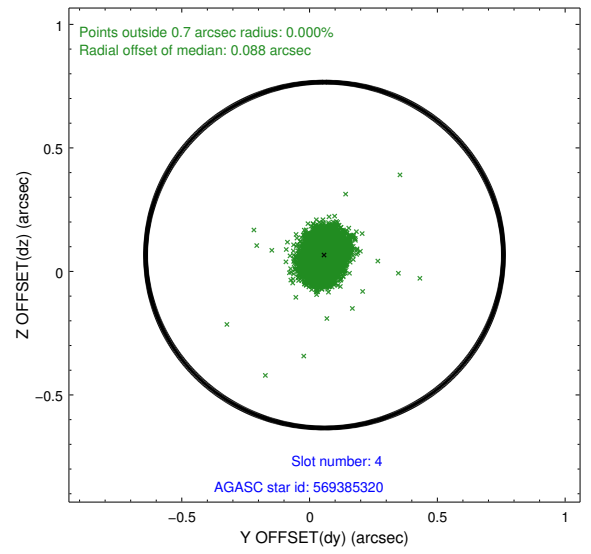
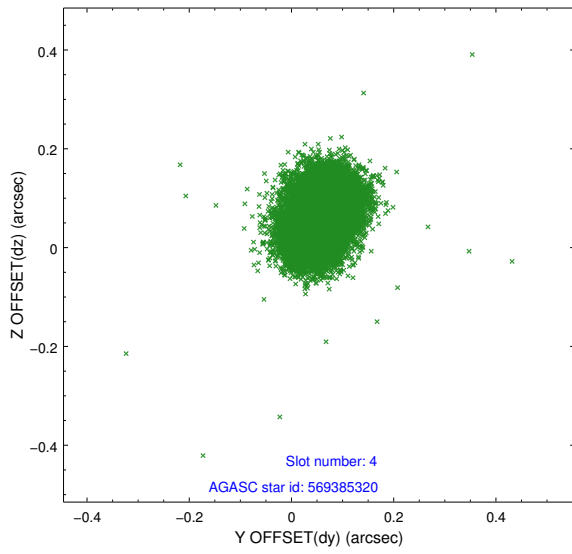
slot	status	id	mag	n_pts	med_dy	med_dz	dr1	dr2	ra	dec	mean_y	mean_z
0	FID	ACIS-I-1	7.02	8140	-0.031	-0.055	0.010	0.051	0.000000	0.000000	923.09	-841.37
1	FID	ACIS-I-4	6.95	8139	0.129	0.077	0.013	0.042	0.000000	0.000000	2143.29	1058.55
2	FID	ACIS-I-5	7.01	8139	-0.196	0.049	0.010	0.028	0.000000	0.000000	-1825.05	1056.36
3	GUIDE	569382904	8.28	16273	0.016	-0.078	0.059	0.095	86.395503	69.273356	530.45	564.95
4	GUIDE	569385320	8.14	16269	0.058	0.066	0.063	0.101	84.115590	69.098544	-1066.01	-1955.20
5	GUIDE	569901096	7.45	16277	-0.061	0.049	0.054	0.087	84.585955	69.399398	-1400.32	-762.71
6	GUIDE	569904128	8.58	16274	-0.012	-0.072	0.084	0.135	86.252443	70.010654	-1517.25	2263.46
7	GUIDE	569910928	8.33	16273	-0.001	0.034	0.061	0.099	86.593055	69.718863	-464.38	1848.11

2.4 Star Slots

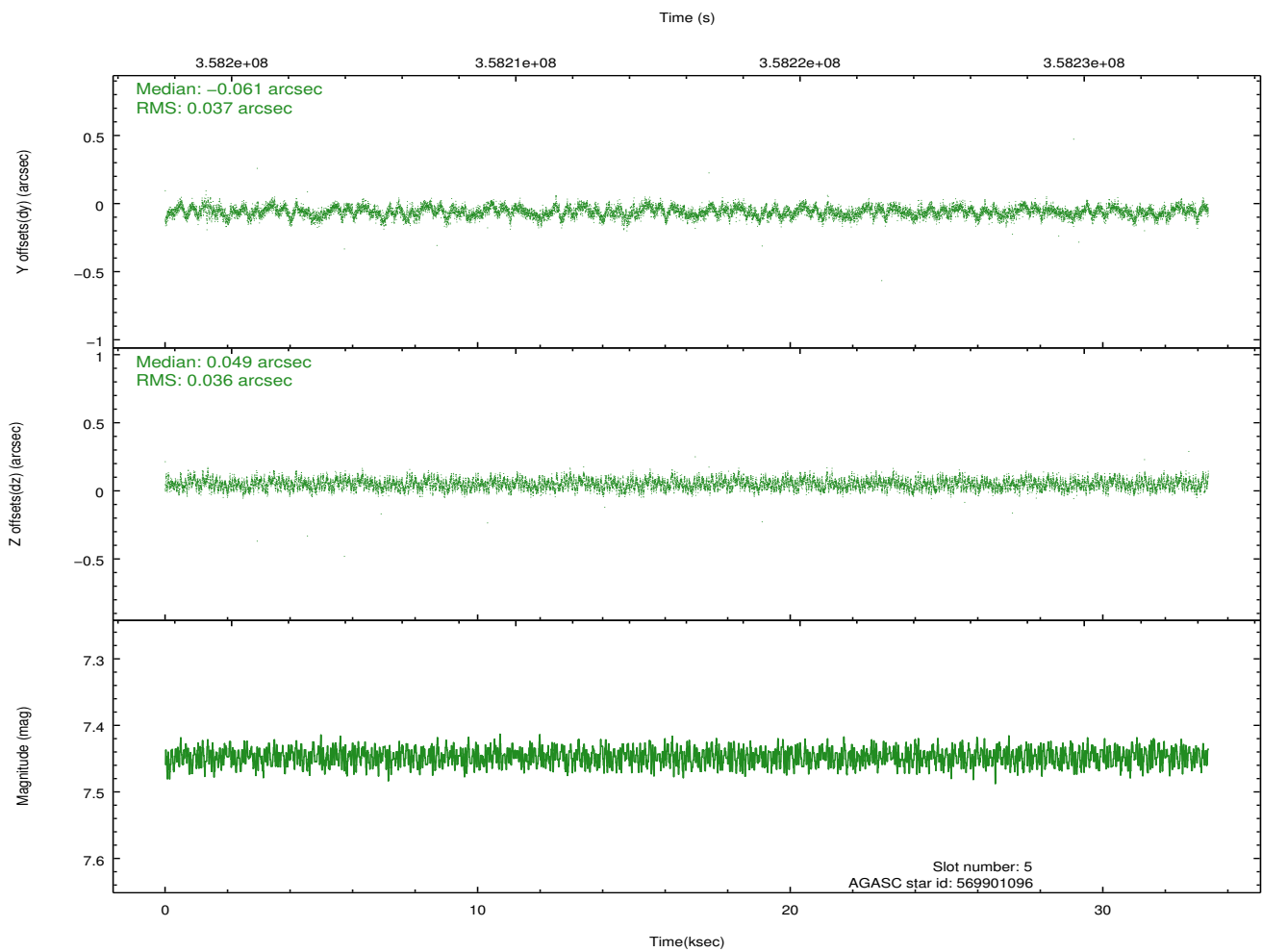
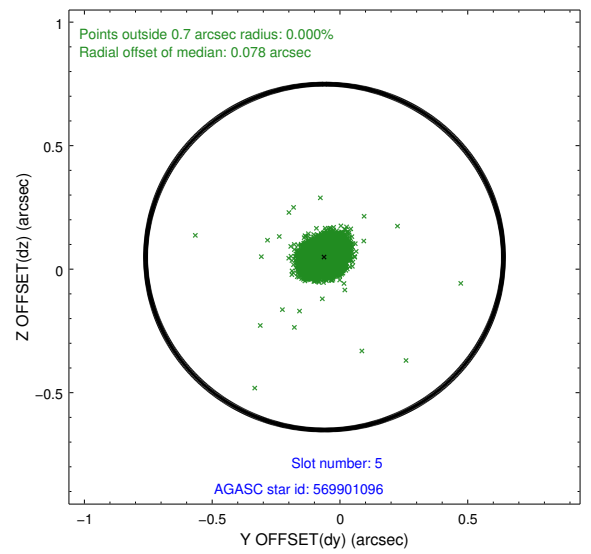
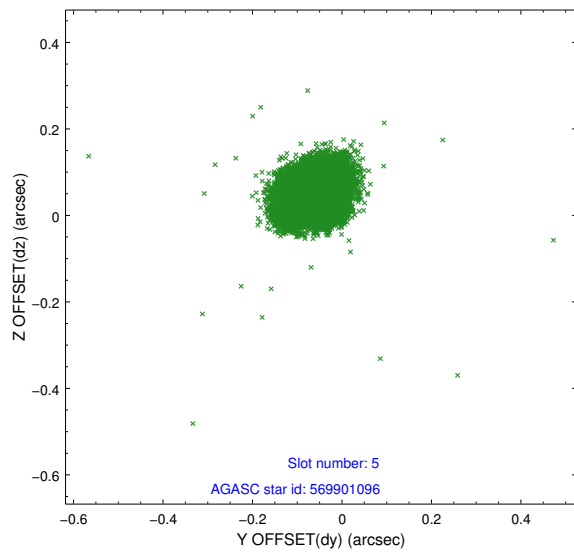
2.4.1 Slot 3



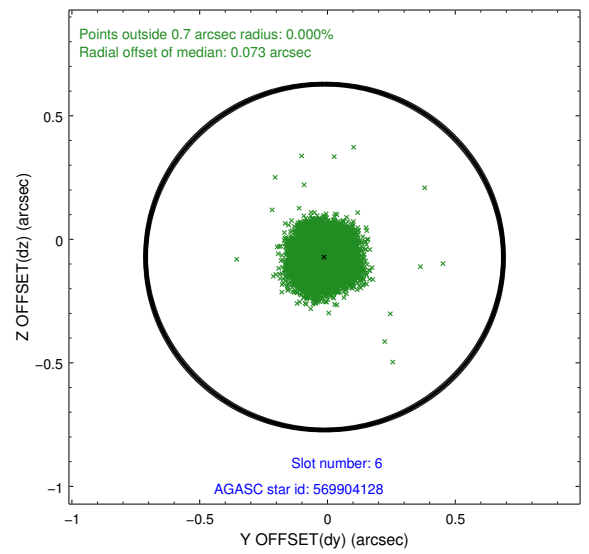
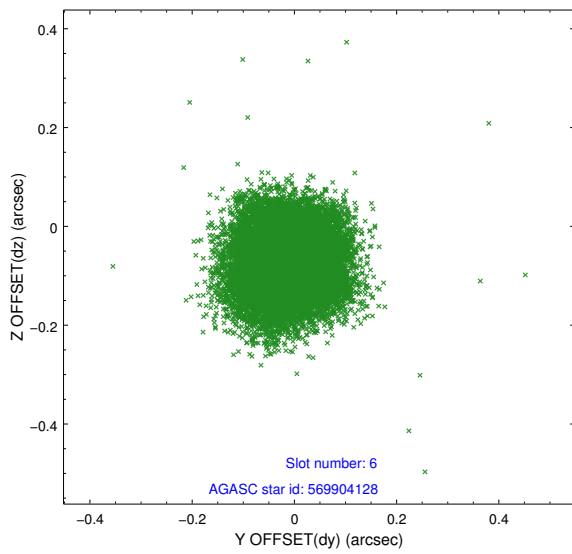
2.4.2 Slot 4



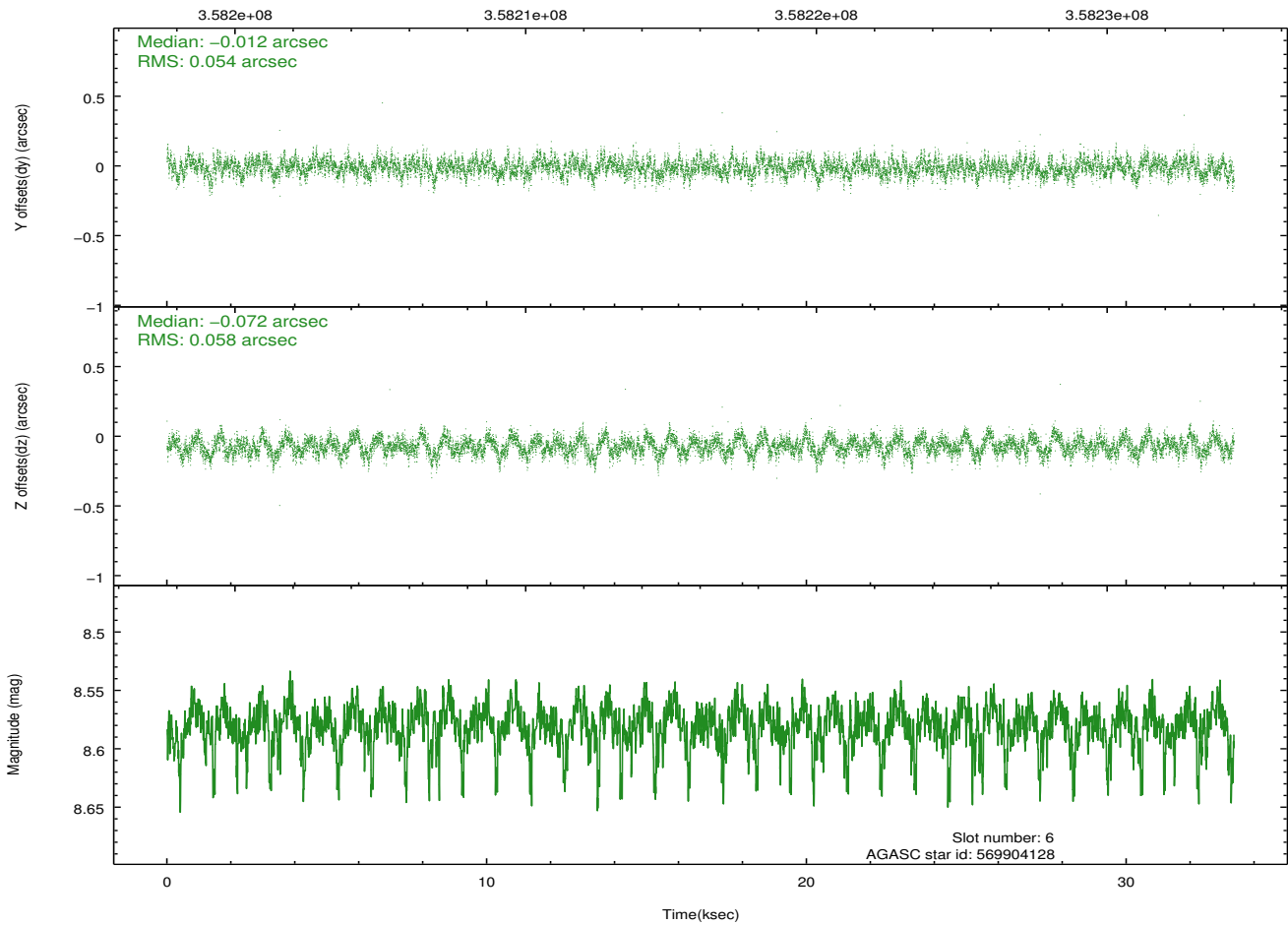
2.4.3 Slot 5



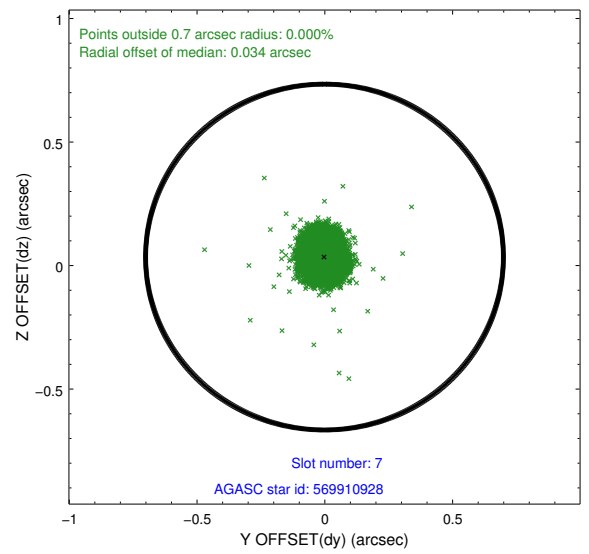
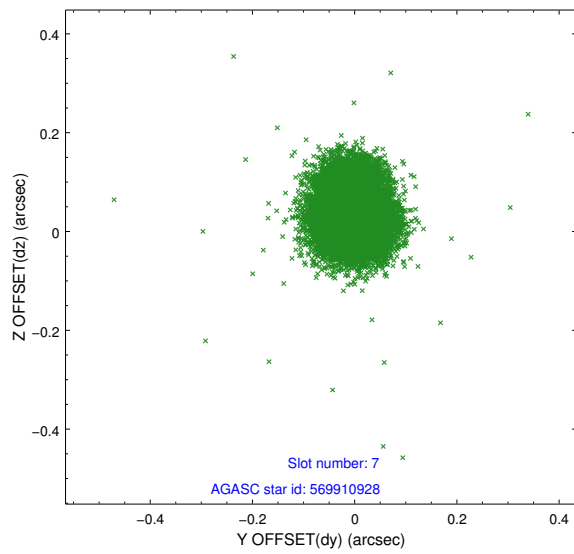
2.4.4 Slot 6



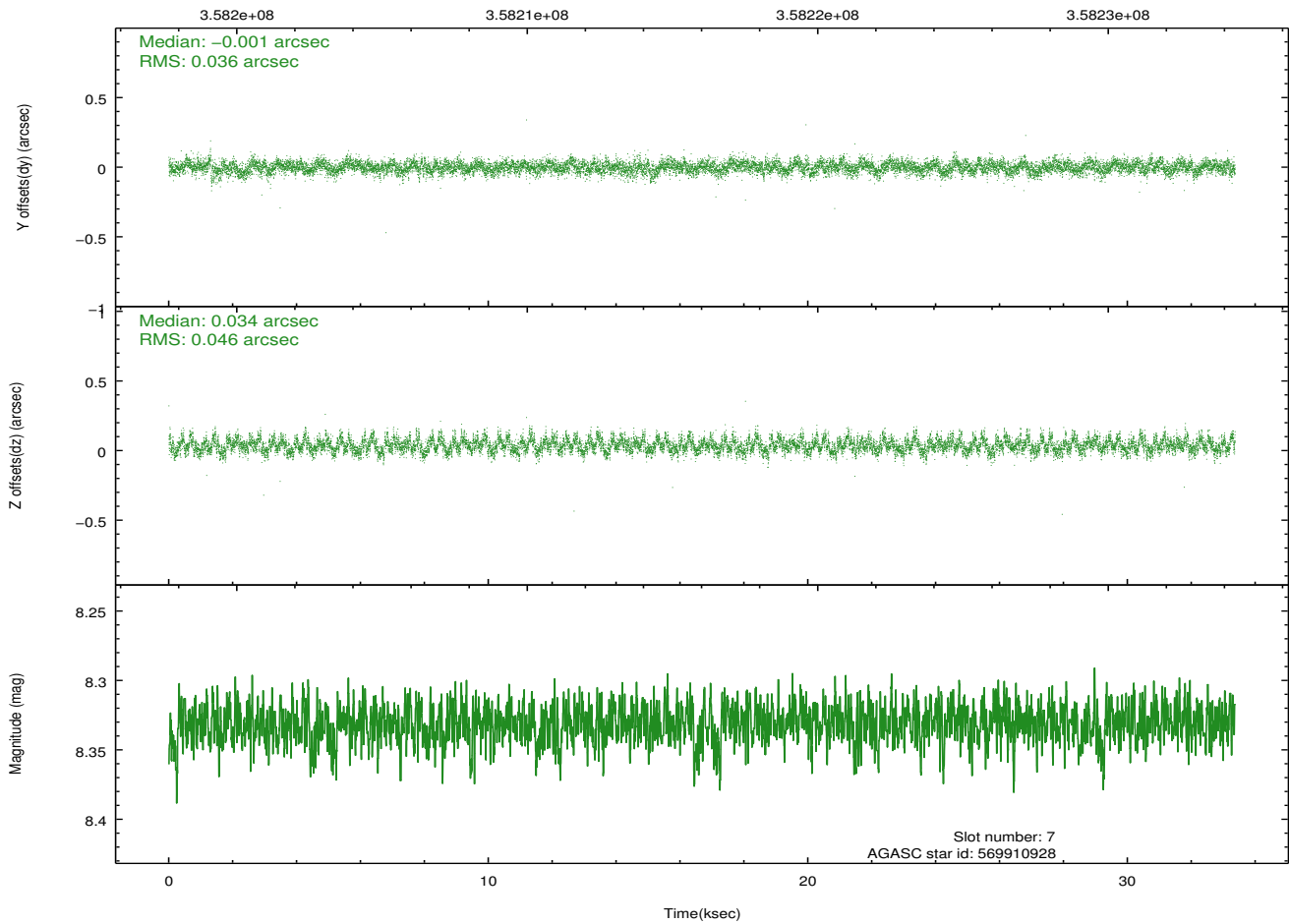
Time (s)



2.4.5 Slot 7

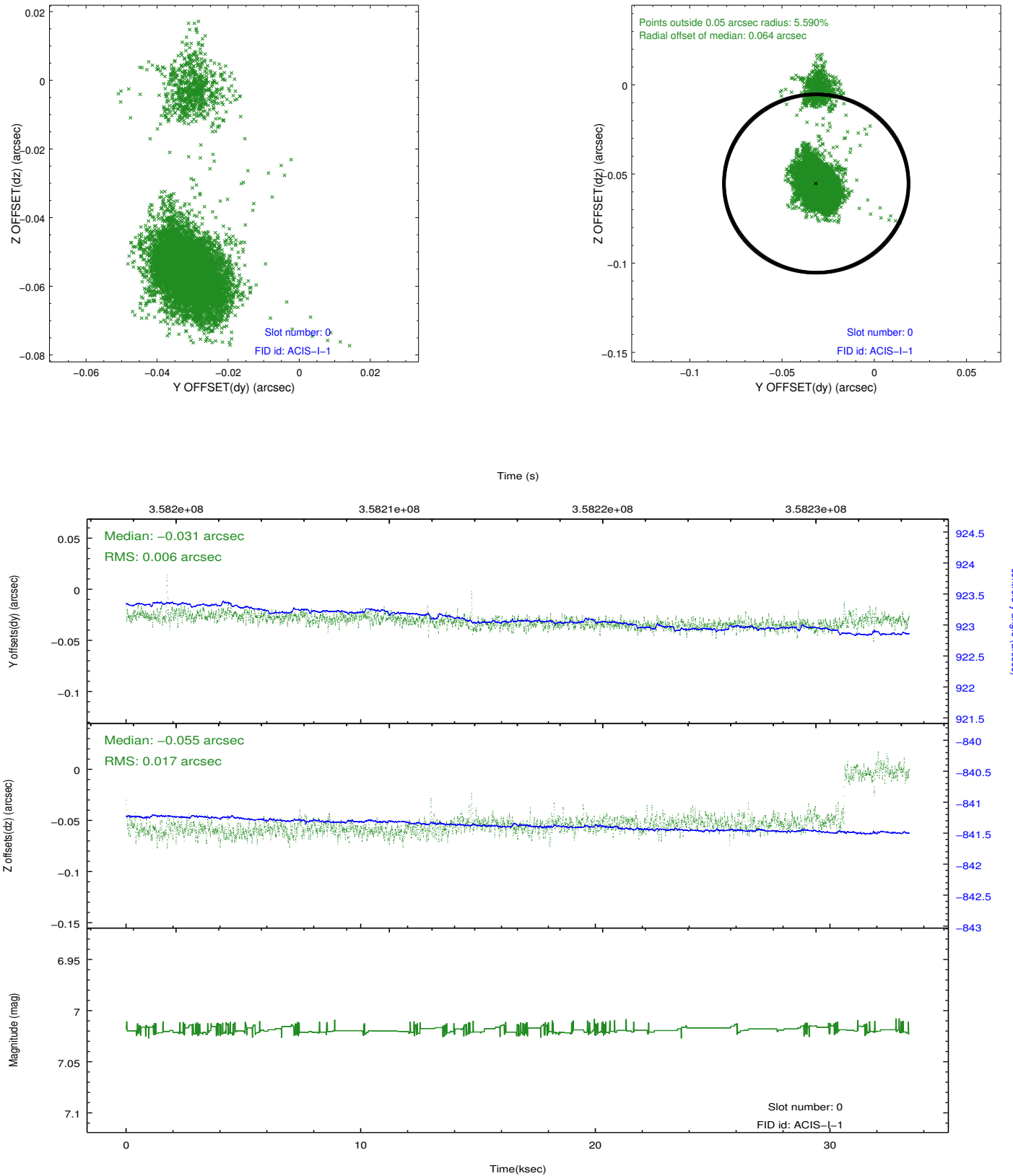


Time (s)

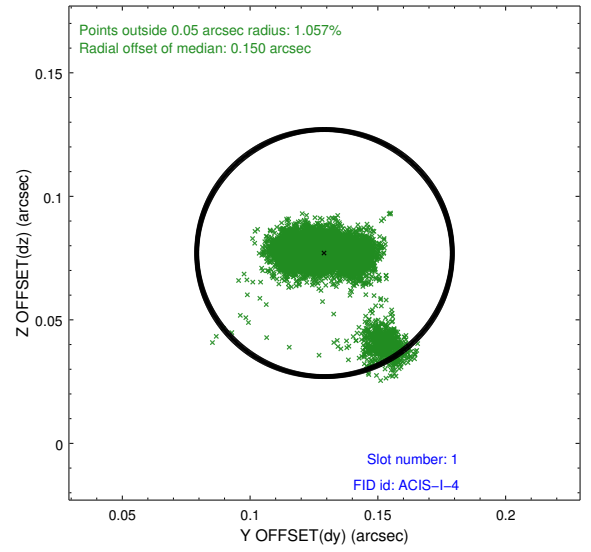
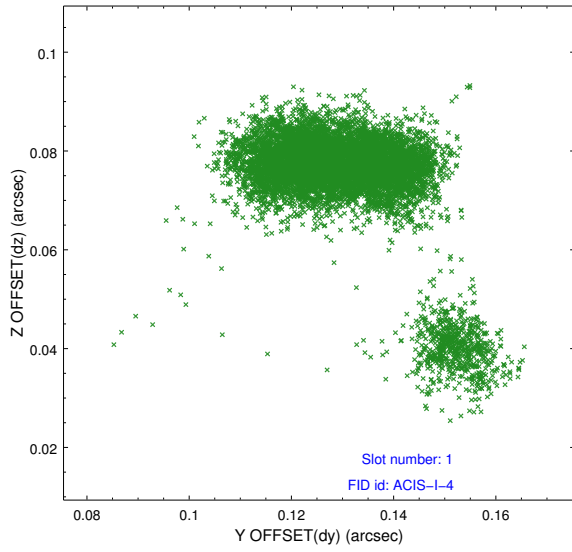


2.5 FID Slots

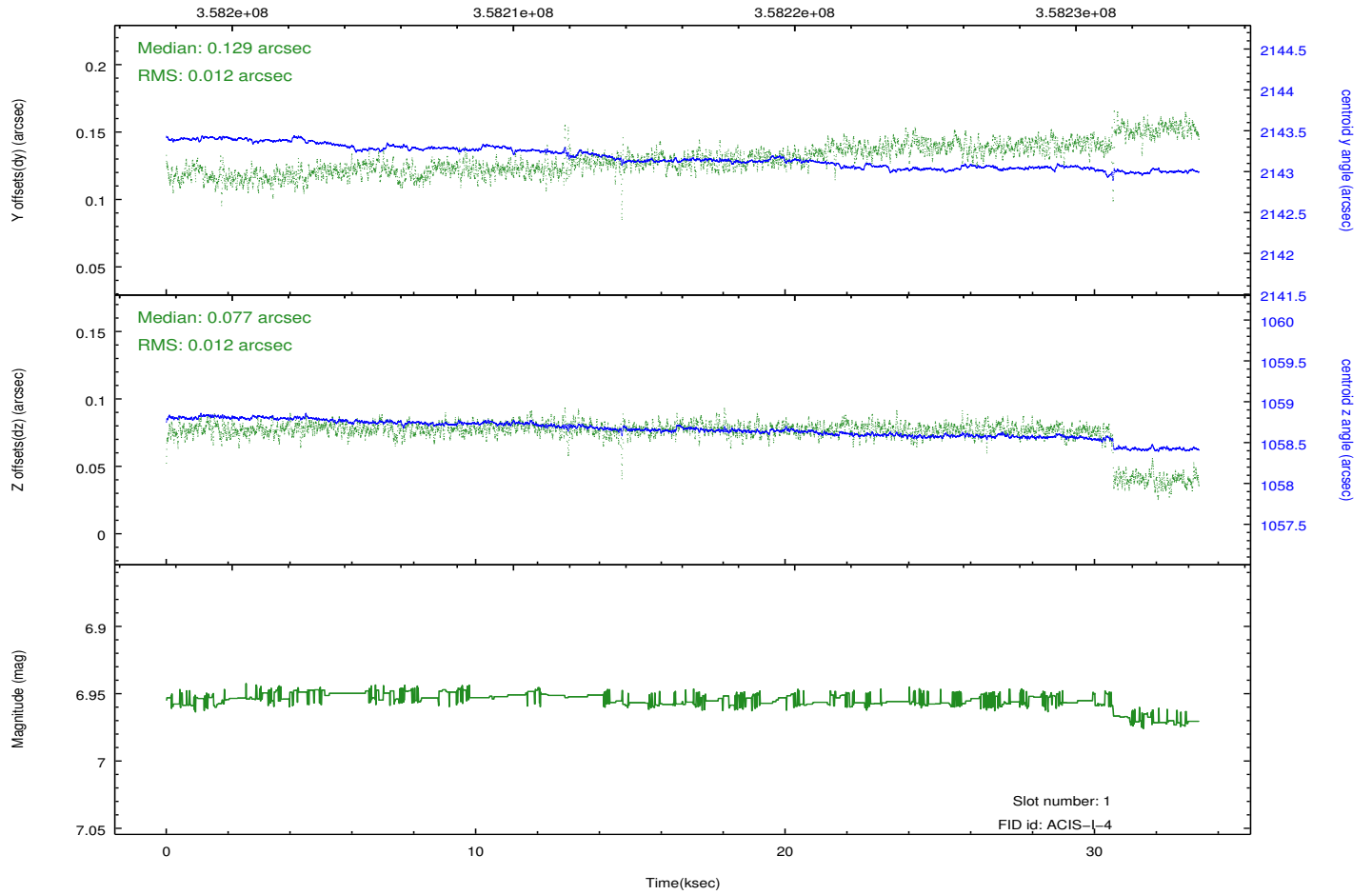
2.5.1 Slot 0



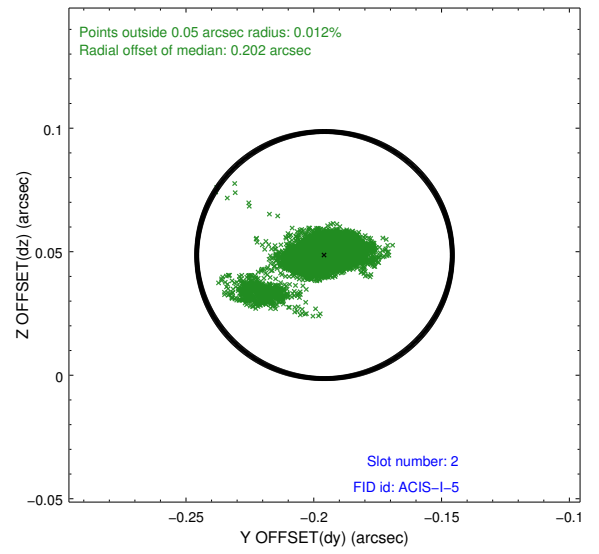
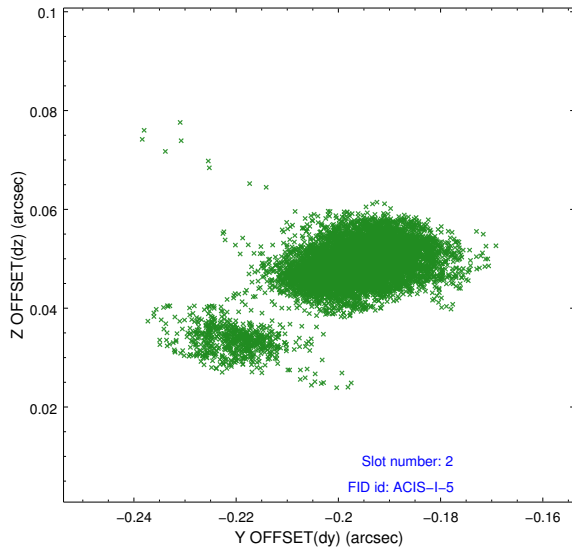
2.5.2 Slot 1



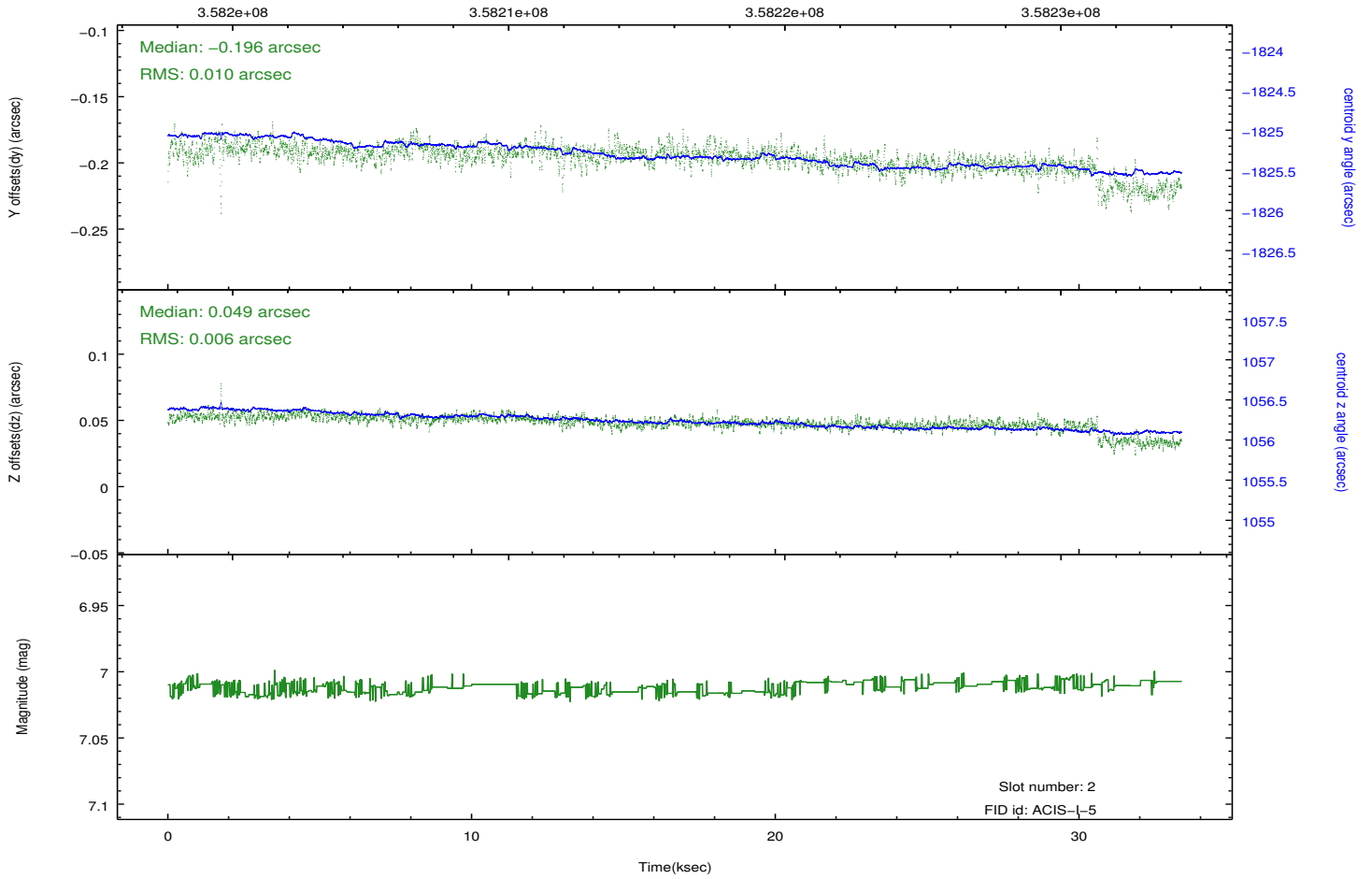
Time (s)



2.5.3 Slot 2



Time (s)



A Summary

A.1 Status

V&V Scientist	Jen Lauer
V&V Date (YYYY-MM-DD)	2012.06.11
V&V Edition	1
V&V Disposition and Status	OK
V&V Charge Time	32.9375179

A.2 Comments

Roll=314 degrees. Roll of obs10531 is 314 degrees.