

V&V Reference Report

L2 ASCDS Version : 8.4.4

Observation 10700 - L2 Version 3
Chandra X-Ray Center

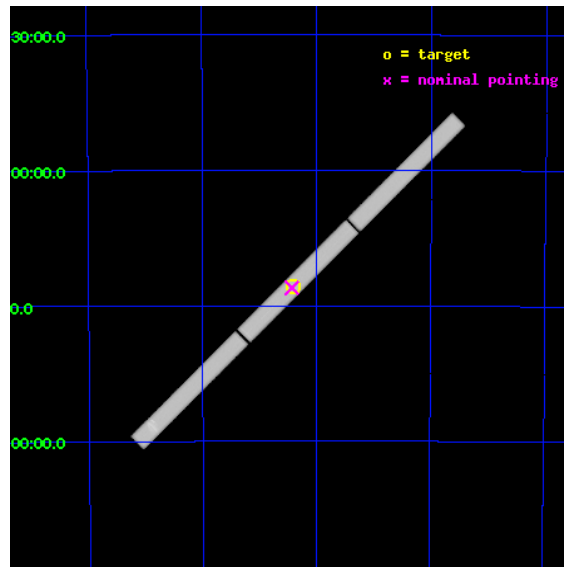
L2 Processing Date : Aug 13 2012

Contents

1	Front	2
2	OBI	3
2.1	OBI	3
2.1.1	Images	3
2.1.2	Parameters	4
2.1.3	Events	4
2.2	Compared Parameters	5
2.3	Aspect	6
2.4	Star Slots	9
2.4.1	Slot 3	9
2.4.2	Slot 4	10
2.4.3	Slot 5	11
2.4.4	Slot 6	12
2.4.5	Slot 7	13
2.5	FID Slots	14
2.5.1	Slot 0	14
2.5.2	Slot 1	15
2.5.3	Slot 2	16
3	Gratings	17
3.1	LETG Arm	17
A	Summary	19
A.1	Status	19
A.2	Comments	19

1 Front

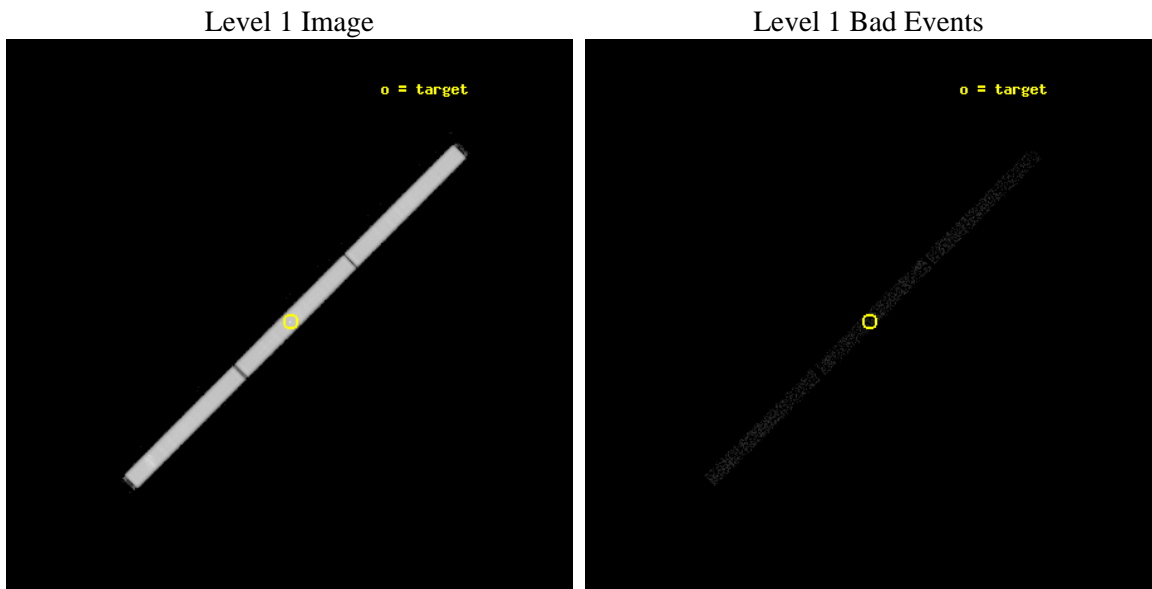
seq_num	501156	Sequence number
obs_id	10700	Observation id
title	Monitoring the spectral evolution of RXJ0720-3125 and determining its nature	Proposal title
observer	Dr Jelle Kaastra	Principal investigator
object	RX J0720-3125	Source name
ra_targ	110.104167	Observer's specified target RA [deg]
dec_targ	-31.430611	Observer's specified target Dec [deg]
ra_nom	110.10813546038	Nominal RA [deg]
dec_nom	-31.434060863537	Nominal Dec [deg]
roll_nom	315.10066352897	Nominal Roll [deg]
revision	3	Processing version of data
ontime	21817.382331848	[s]
livetime	21579.025734313	Overtime multiplied by DTCOR
l2events	2044983	Number of level 2 events



2 OBI

2.1 OBI

2.1.1 Images



2.1.2 Parameters

obi_num	0	Obi number	sched_exp_time	21800.000000	[s] Scheduled observation exposure time
ascdsver	8.4.5	Processing system revision	ontime	21817.382331848	[s]
caldbver	4.5.1.1	 	l1events	2637073	Number of level 1 events
date	2012-08-13T02:41:47	Date and time of file creation			
revision	3	Processing version of data			

2.1.3 Events

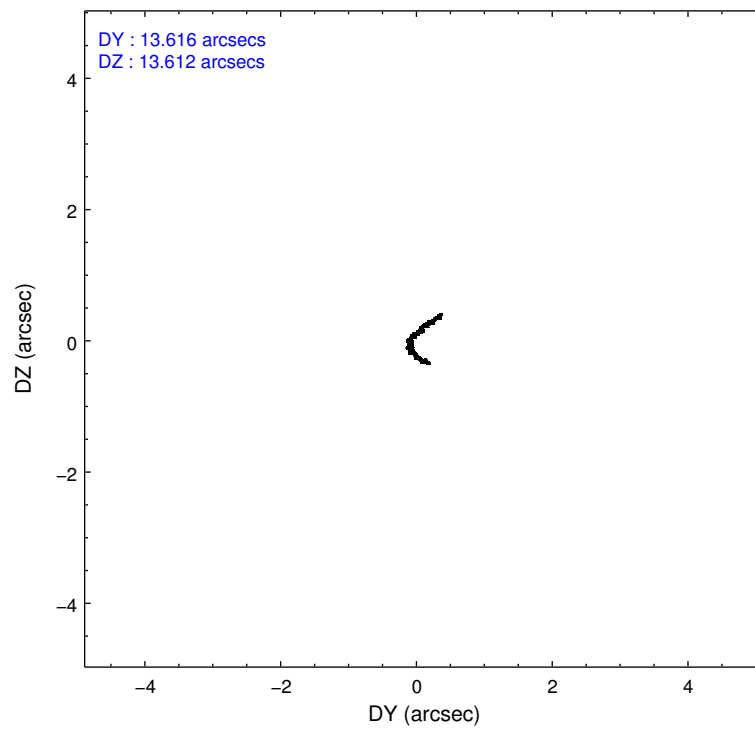
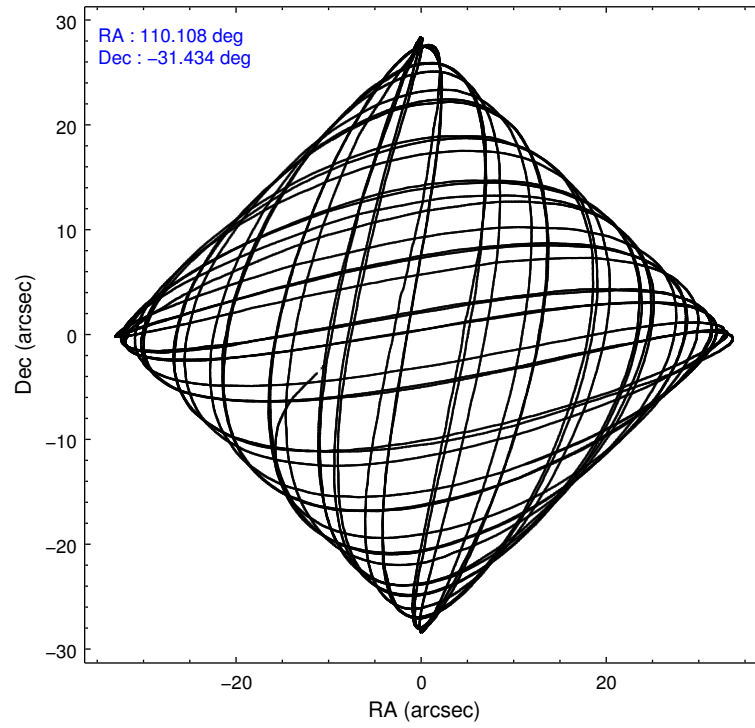
Level 1 Events

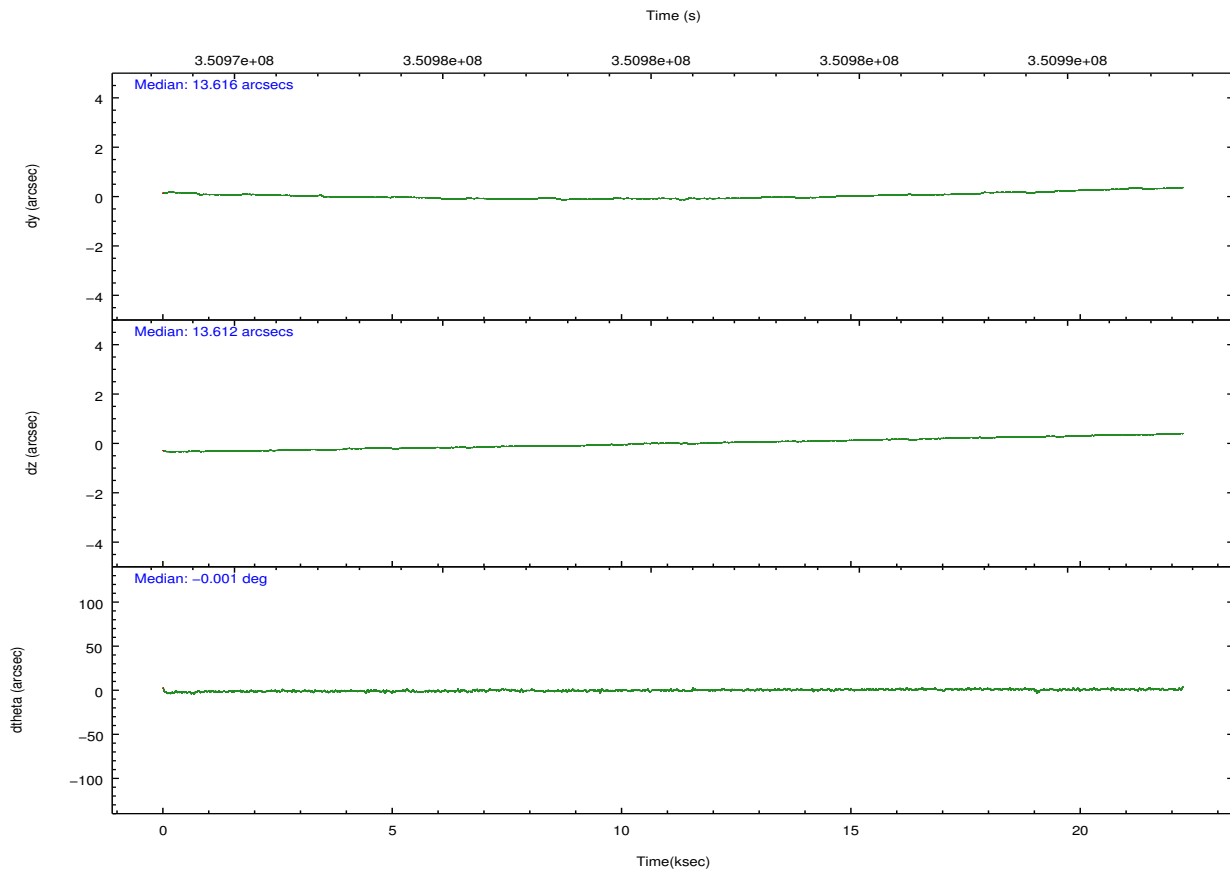
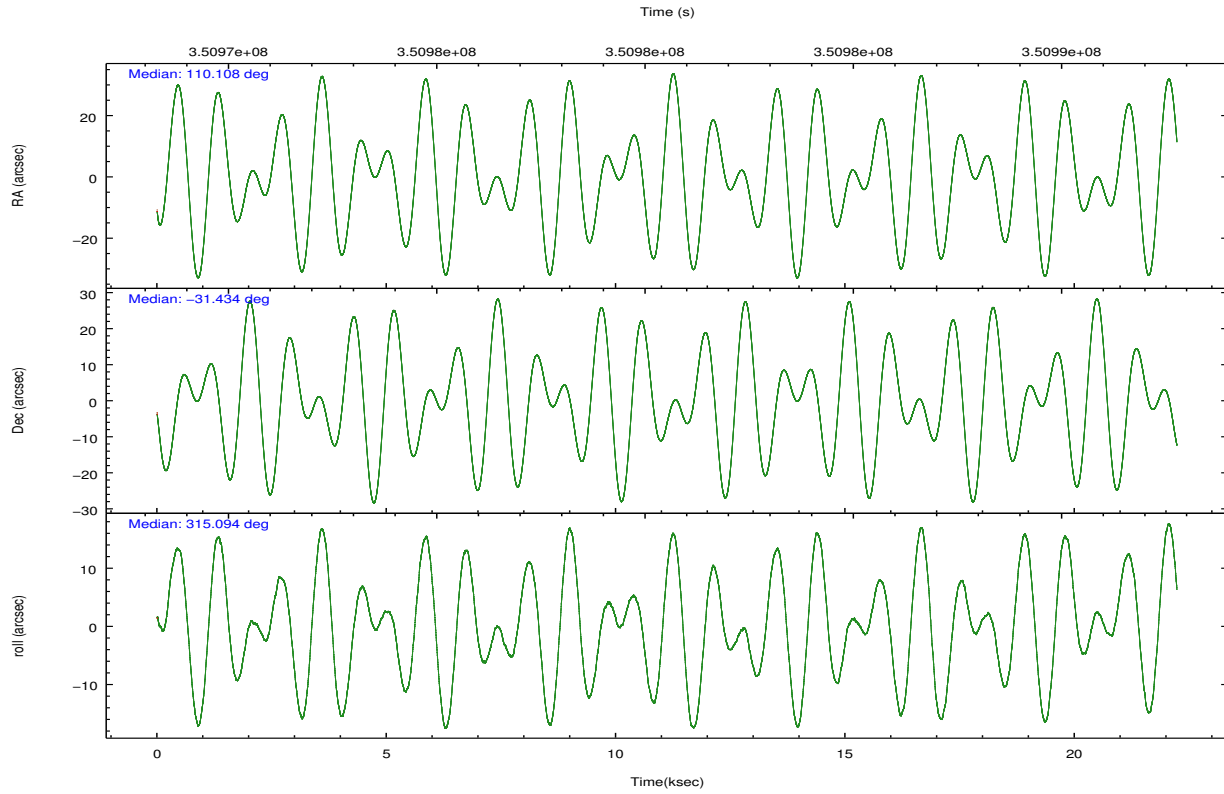
	segment 1	segment 2	segment 3
level 1 events	873956	867647	895470
rejected events	2445	2633	2727
rejected %	0%	0%	0%

2.2 Compared Parameters

Parameter	Planned	Actual	Parameter	Planned	Actual
Instrument	HRC	HRC	Obspar format version number	7	7
Detector	HRC-S	HRC-S	Obspar file type	PREDICTED	ACTUAL
Grating	LETG	LETG	Obspar update status	NONE	UPDATED
Data mode	OBSERVING	OBSERVING			
Observation mode	POINTING	POINTING			
[deg] Pointing RA	110.075165	110.1081354603765			
[deg] Pointing Dec	-31.428026	-31.43406086353723			
[deg] Pointing Roll	315.016132	315.1006635289743			
[mm] SIM focus pos	-1.429586	-1.428180813131781			
[mm] SIM defocus	0.1037507710433287	0.1051558262725154			
[mm] SIM translation stage pos	250.455976	250.466033080201			
[mm] SIM translation stage offset	0	-0.01005468664627074			
[s] Observation start time (MET)	350969602.184000	350968745.94903			
Observation start date	2009-02-14T03:32:16	2009-02-14T03:19:05			
[s] Observation end time (MET)	350991402.184000	350992165.66269			
Observation end date	2009-02-14T09:35:36	2009-02-14T09:49:25			

2.3 Aspect





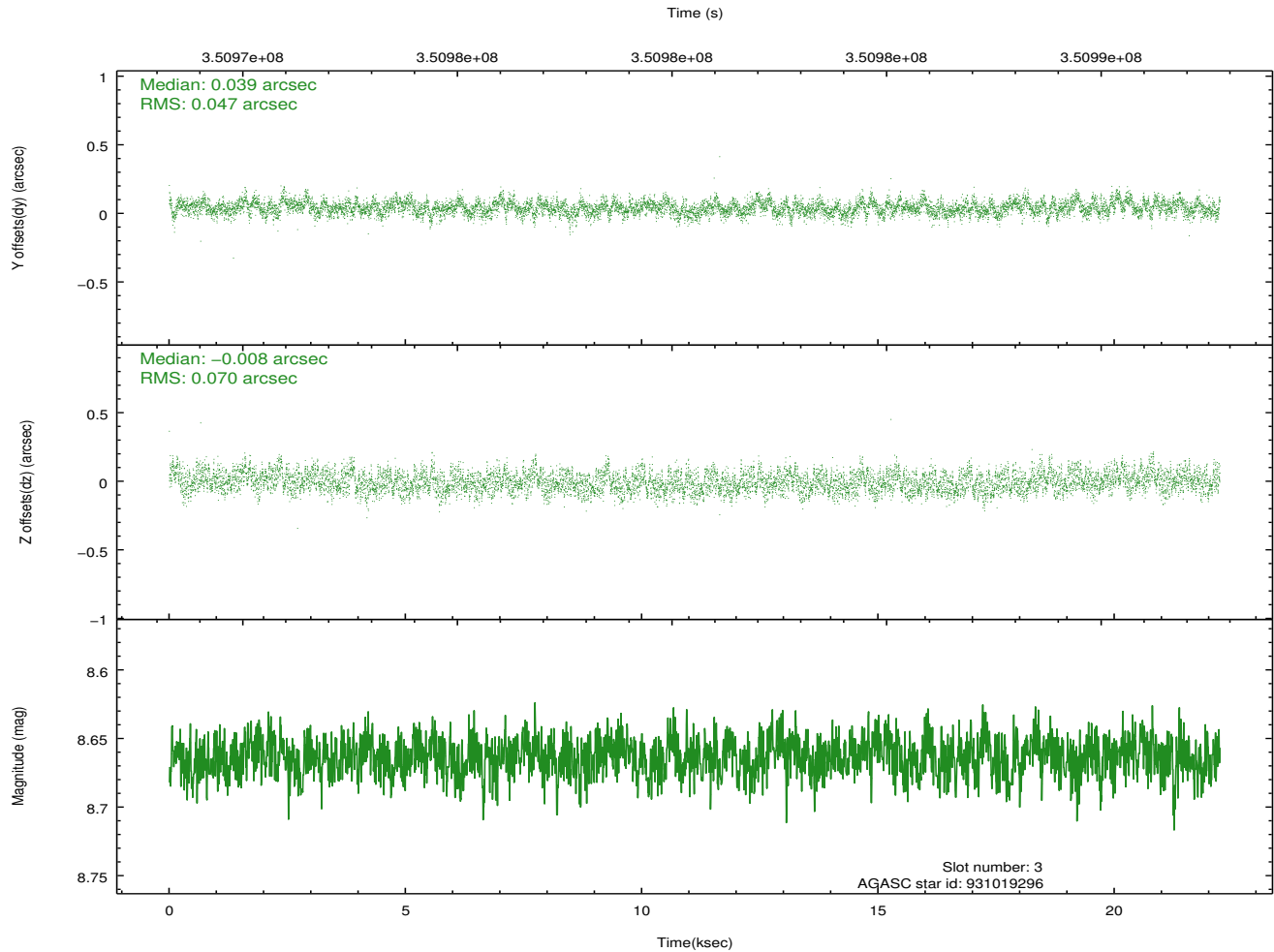
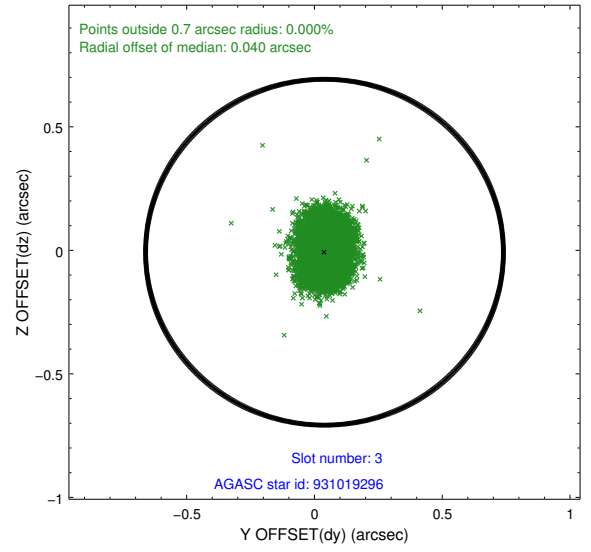
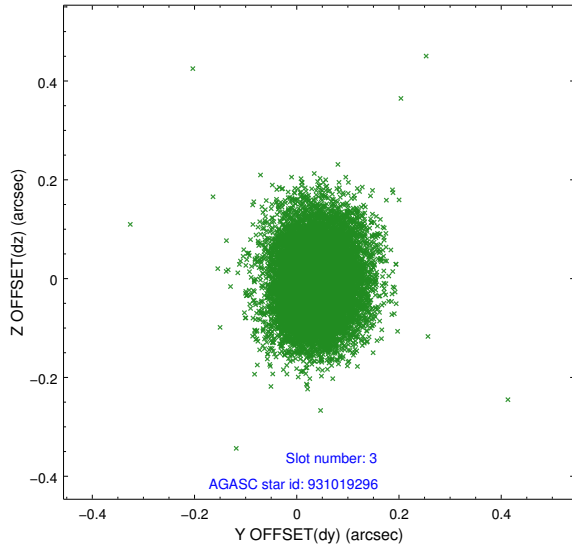
Slot Statistics

slot	status	id	mag	n_pts	med_dy	med_dz	dr1	dr2	ra	dec	mean_y	mean_z
0	FID	HRC-S-2	7.02	5423	0.156	-0.093	0.014	0.027	0.000000	0.000000	1231.71	-455.04
1	FID	HRC-S-3	7.03	5423	0.017	-0.089	0.011	0.026	0.000000	0.000000	-1170.56	567.13
2	FID	HRC-S-4	6.97	5422	0.234	-0.113	0.016	0.035	0.000000	0.000000	1230.19	569.78
3	GUIDE	931019296	8.66	10839	0.039	-0.008	0.089	0.145	109.471771	-31.694370	-625.29	-1988.82
4	GUIDE	931146200	8.96	10836	-0.013	-0.112	0.077	0.125	110.586199	-31.643611	1659.01	555.74
5	GUIDE	931160352	8.63	10749	-0.062	-0.020	0.087	0.141	110.268138	-30.864891	-1011.20	1855.34
6	GUIDE	931163512	8.44	10841	0.036	0.060	0.085	0.134	110.894384	-31.299941	1462.93	2101.50
7	GUIDE	931012368	8.78	10755	-0.002	0.078	0.092	0.147	109.359817	-31.783345	-638.48	-2456.88

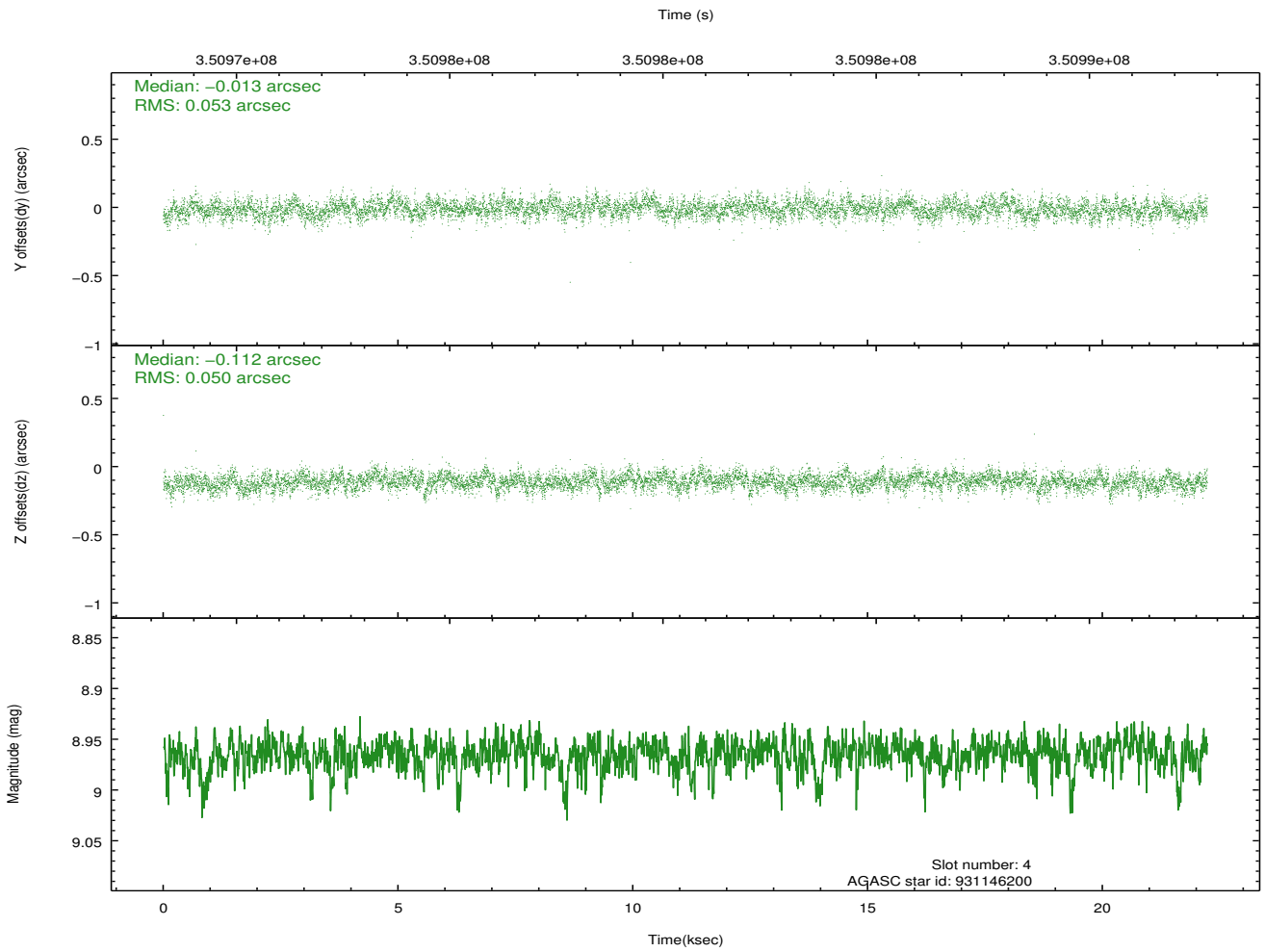
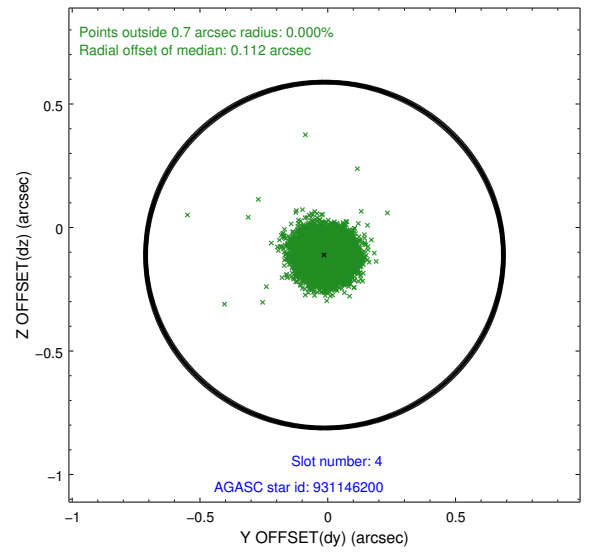
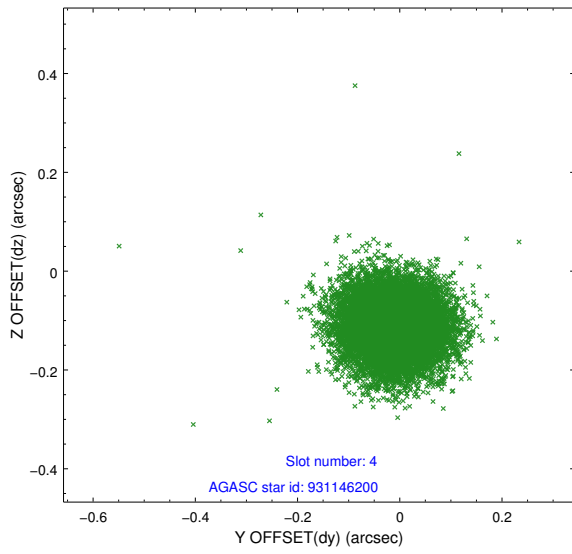
∞

2.4 Star Slots

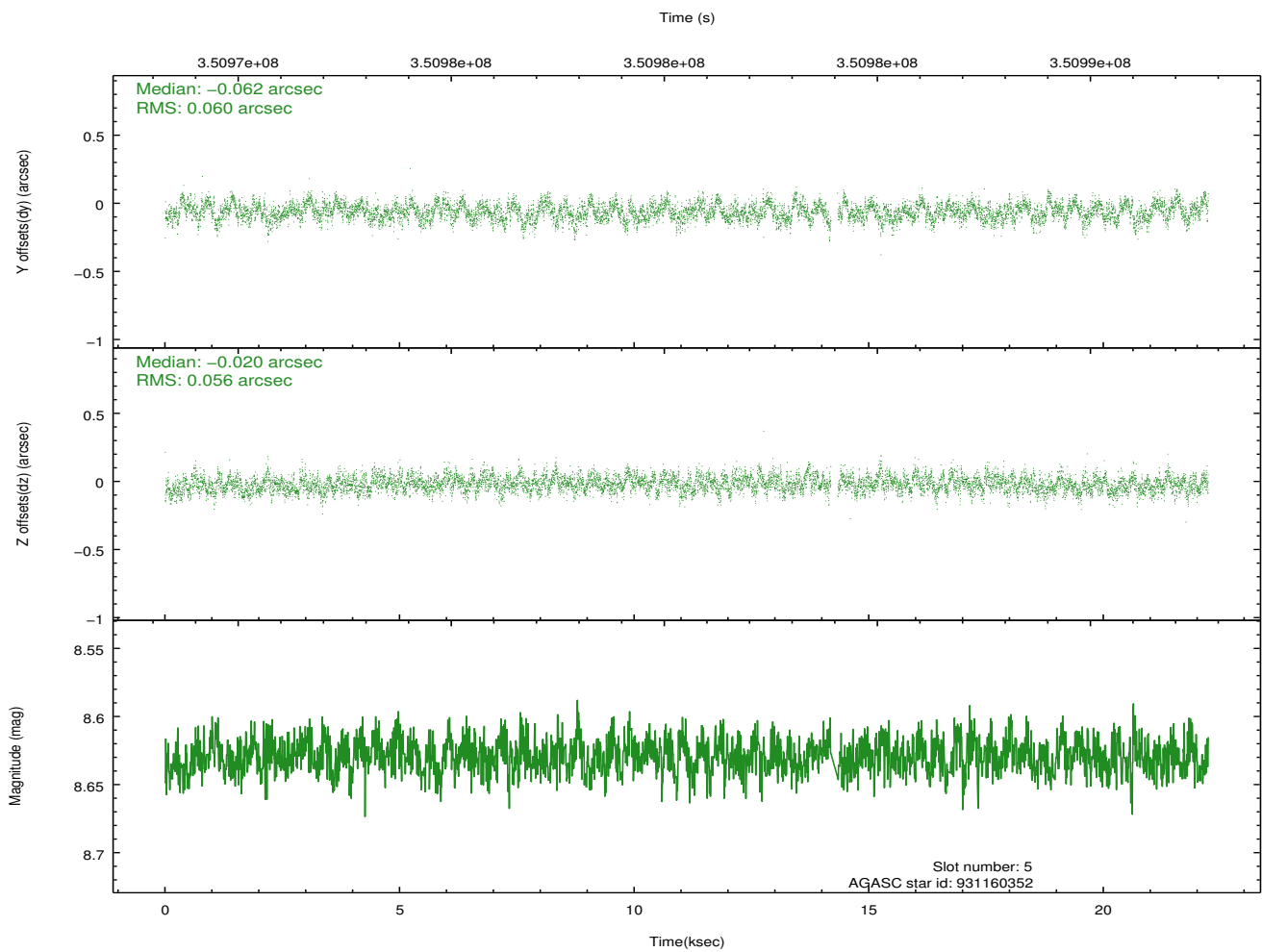
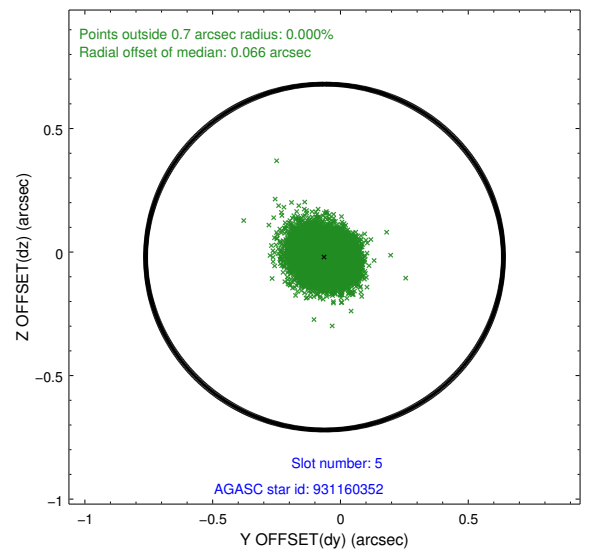
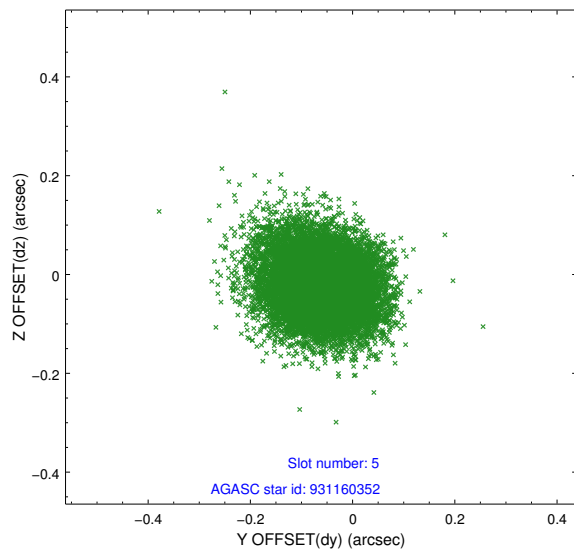
2.4.1 Slot 3



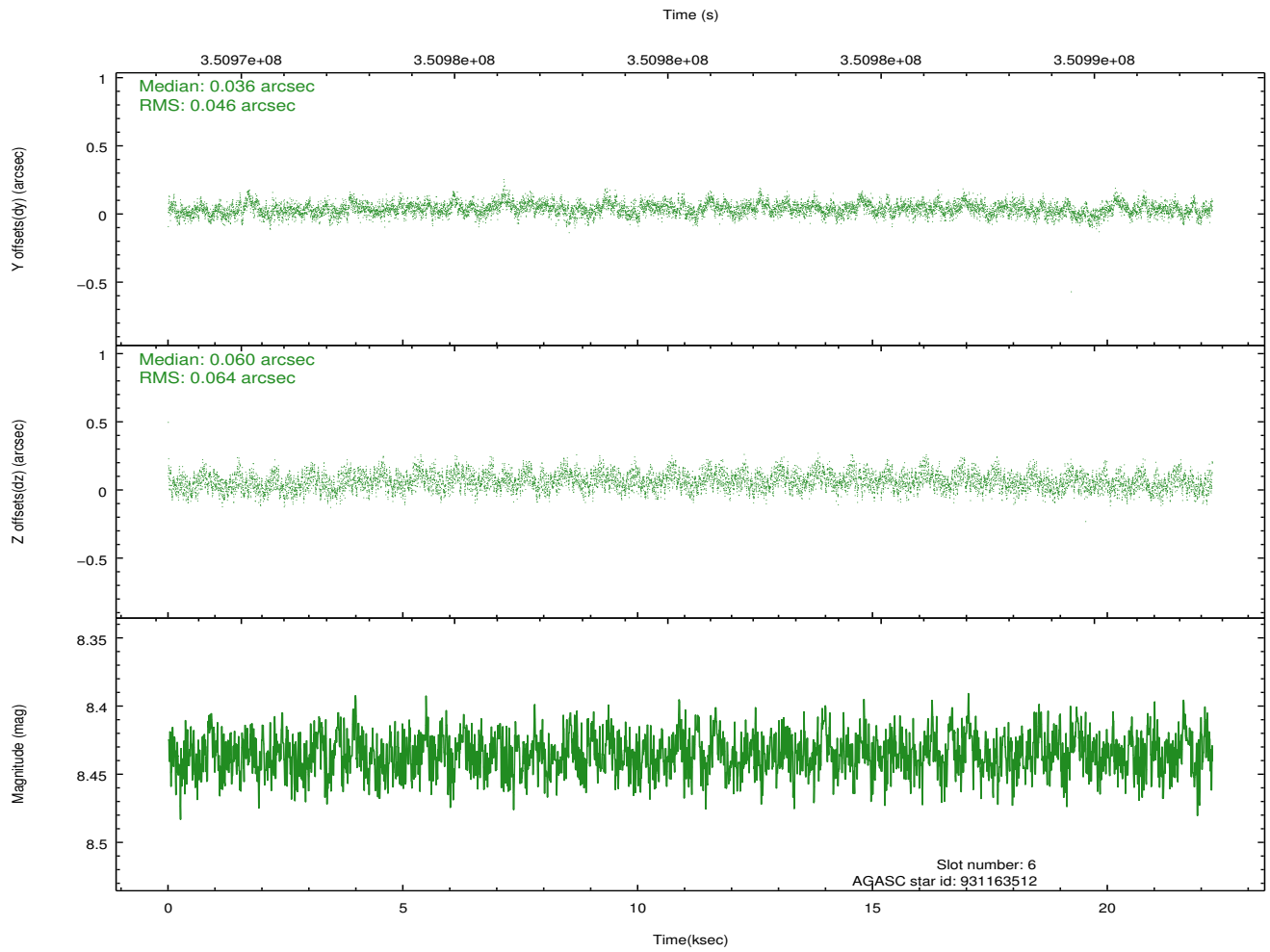
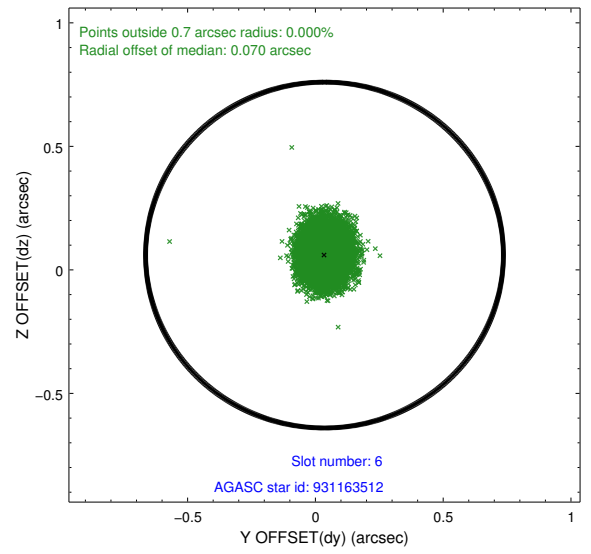
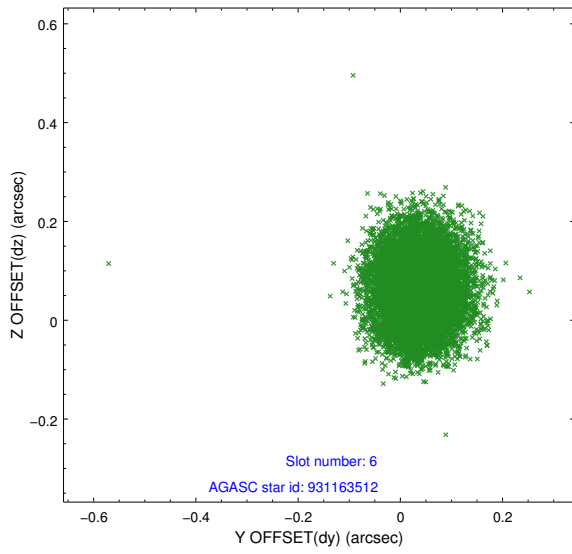
2.4.2 Slot 4



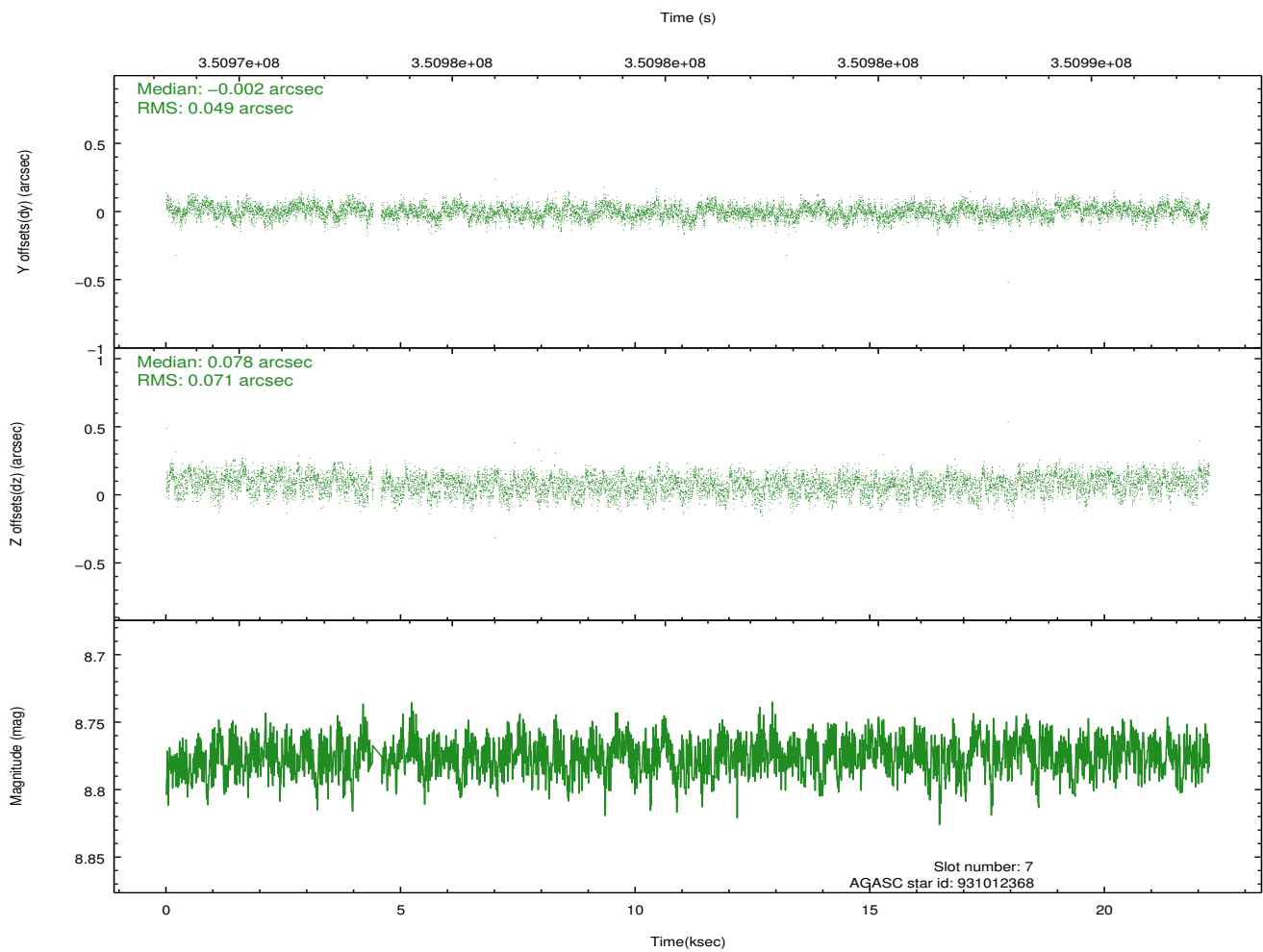
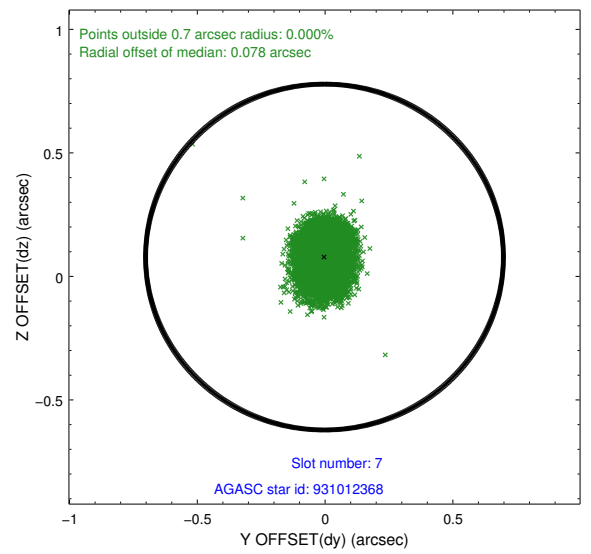
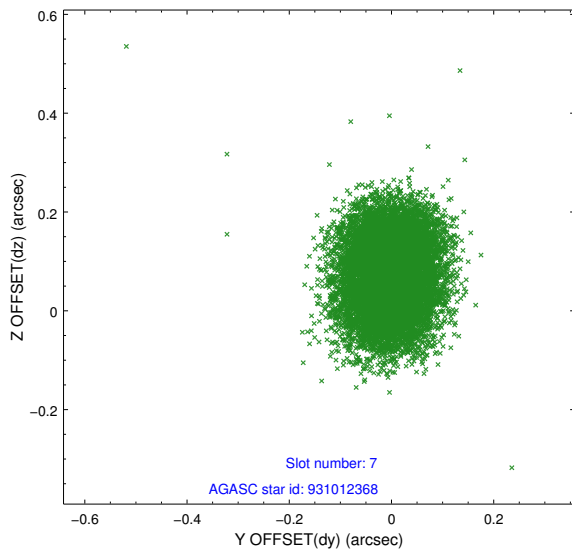
2.4.3 Slot 5



2.4.4 Slot 6

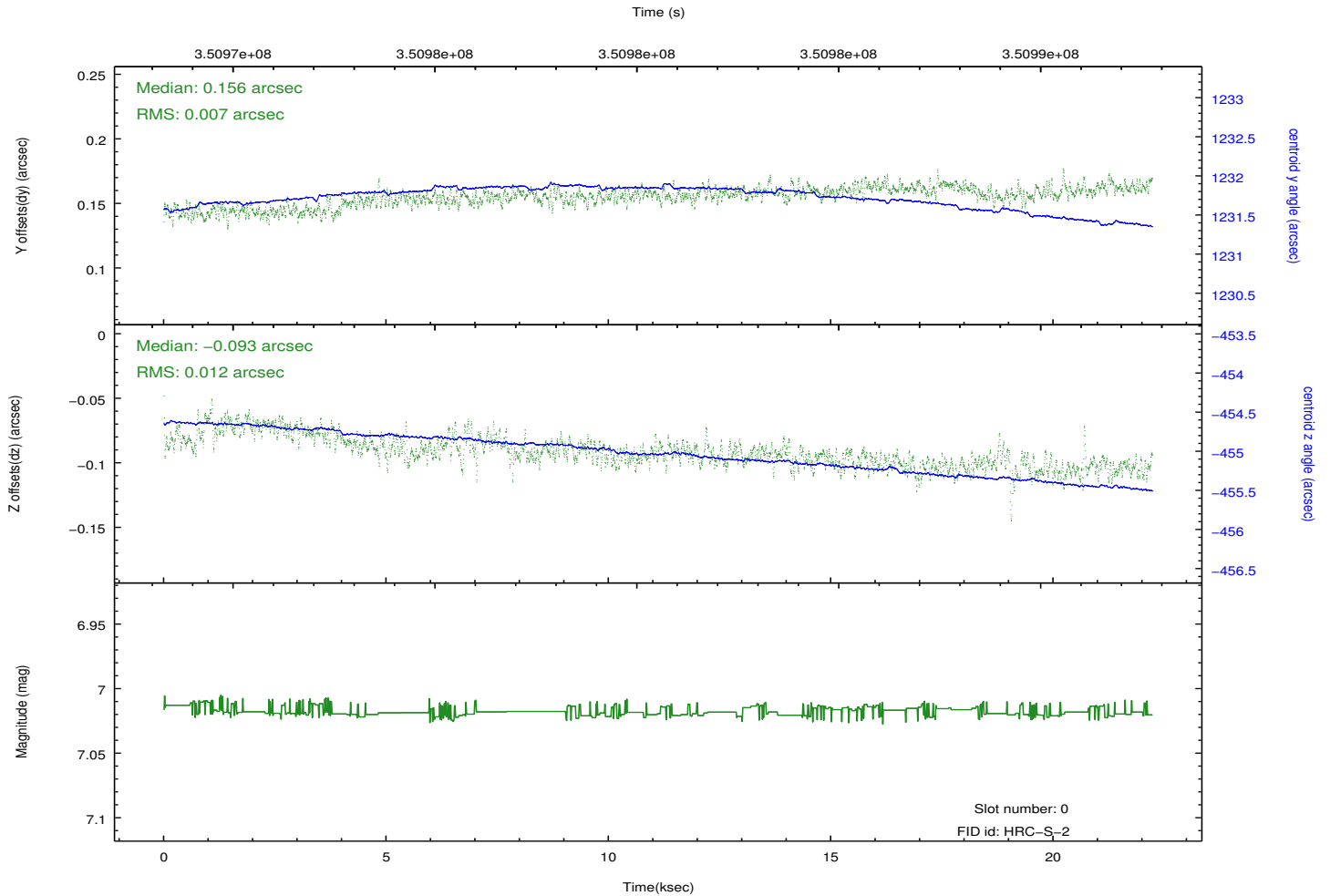
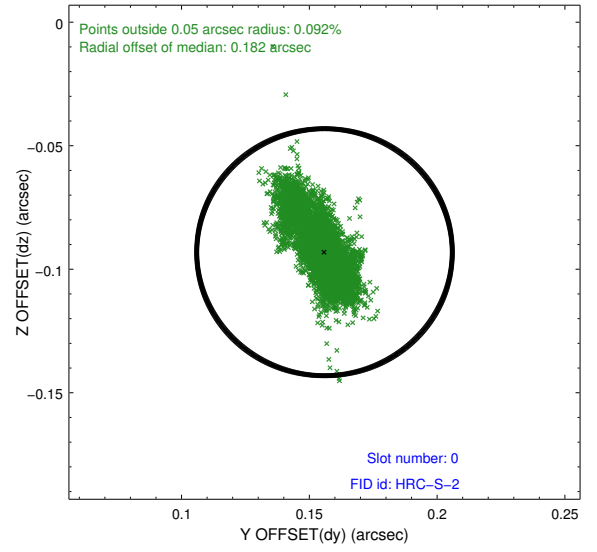
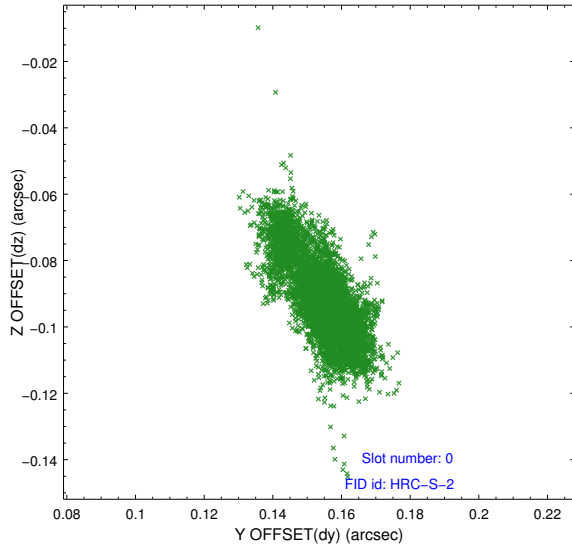


2.4.5 Slot 7

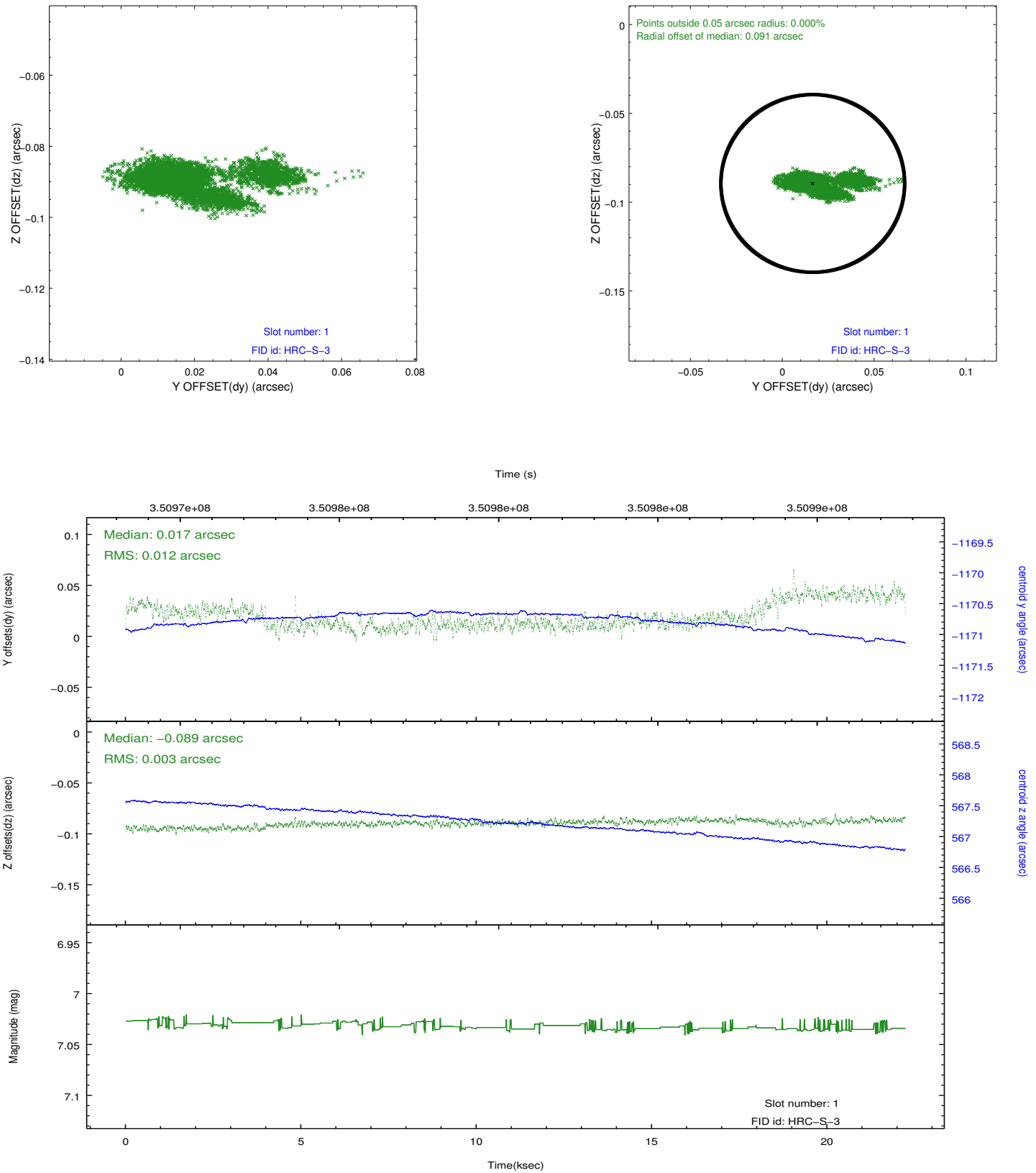


2.5 FID Slots

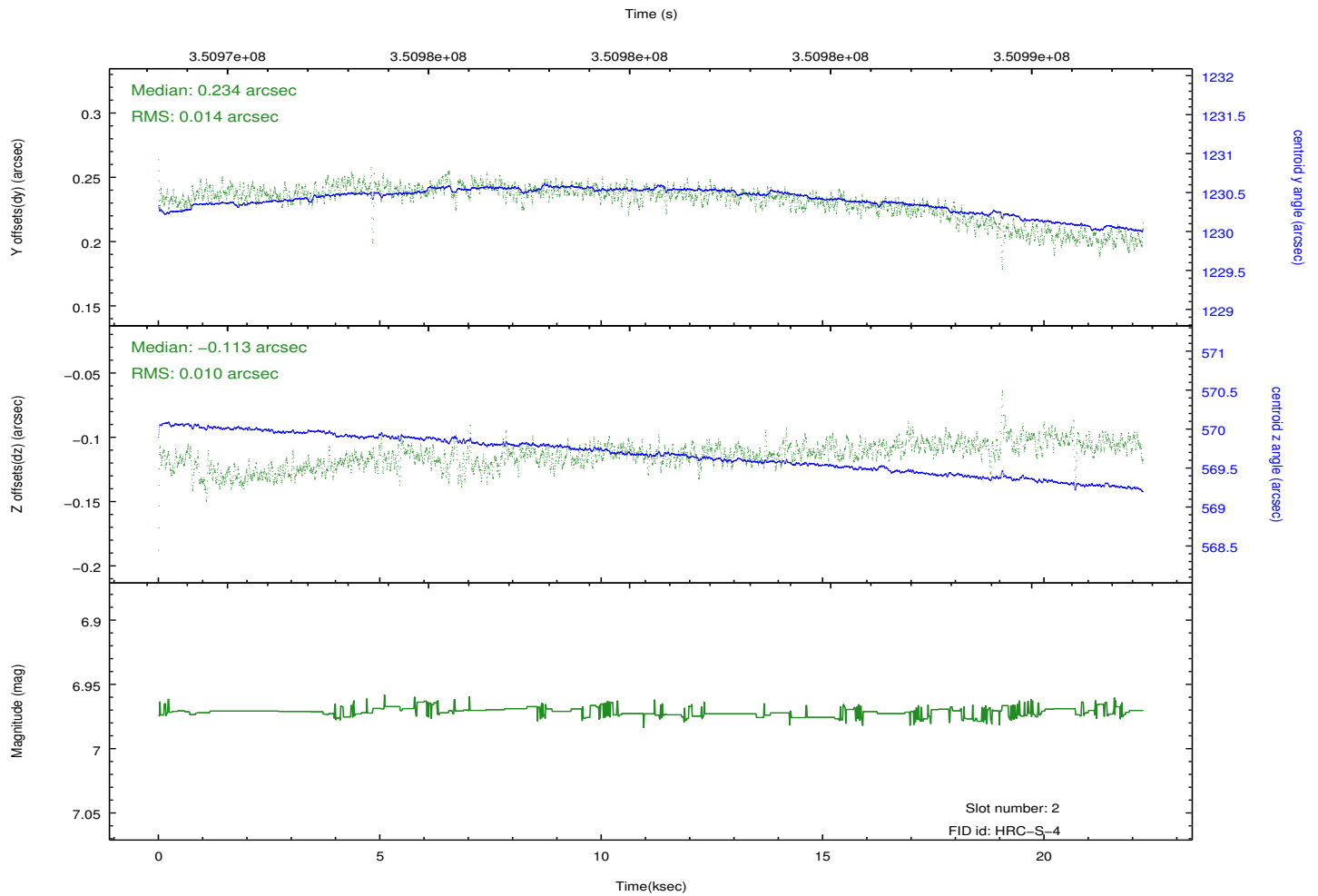
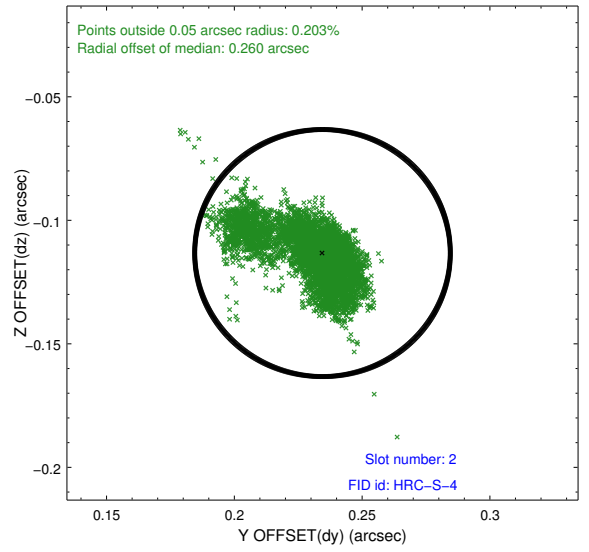
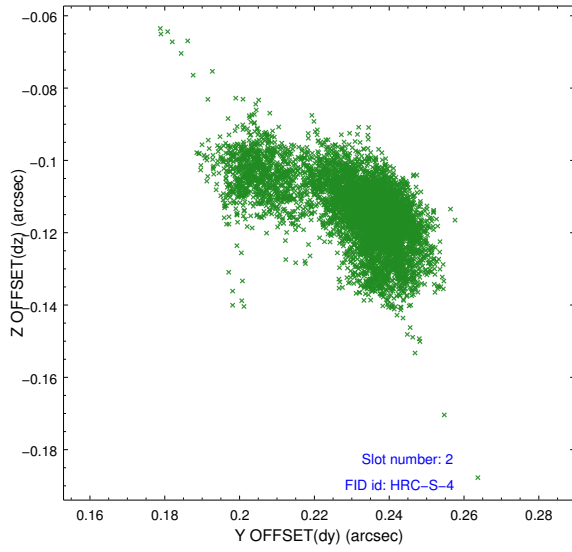
2.5.1 Slot 0



2.5.2 Slot 1

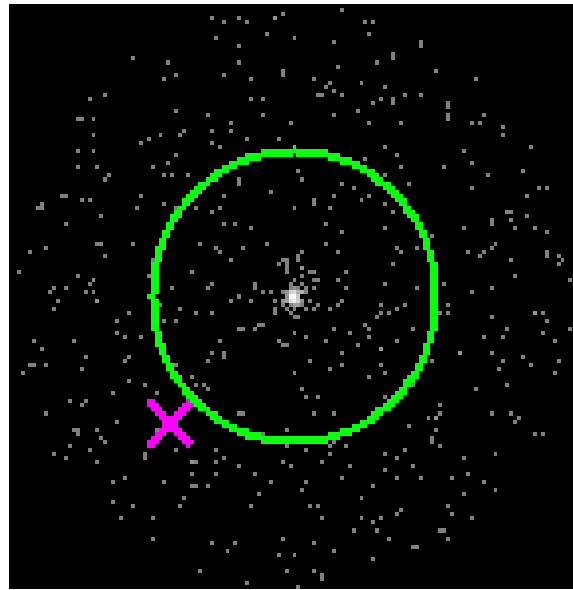


2.5.3 Slot 2



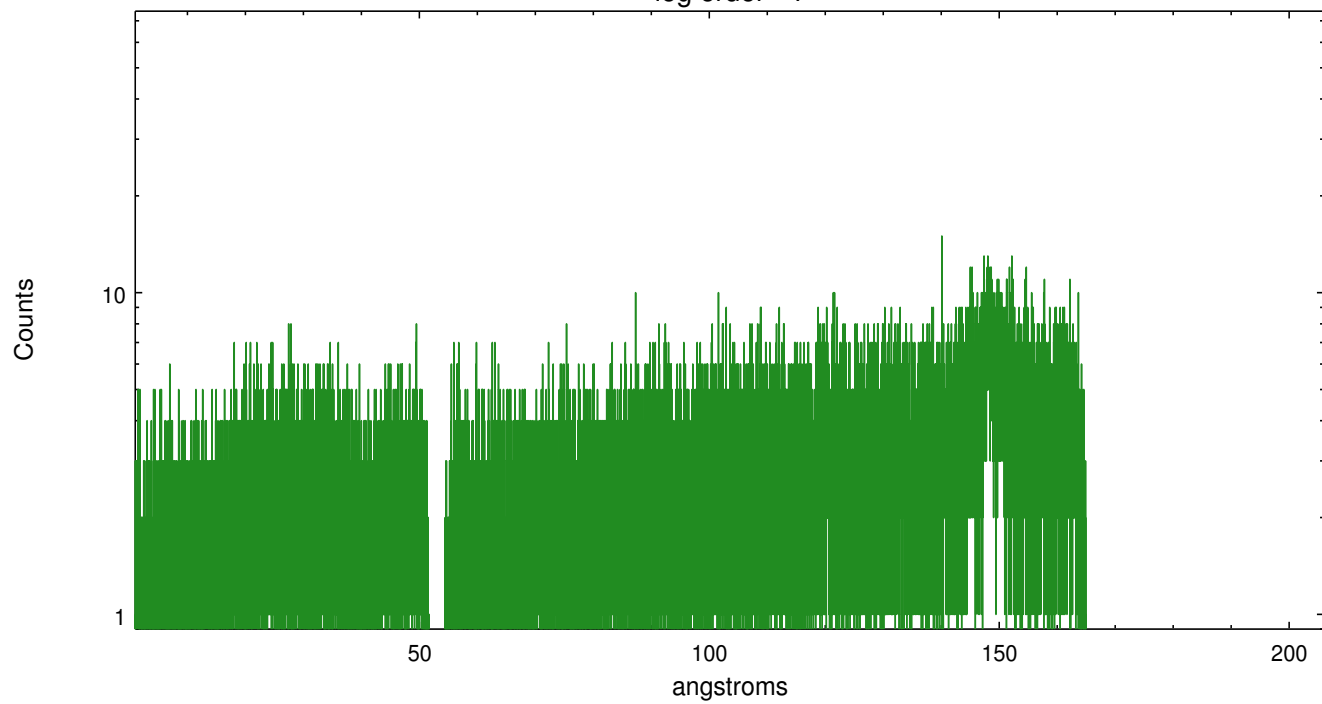
3 Gratings

3.1 LETG Arm

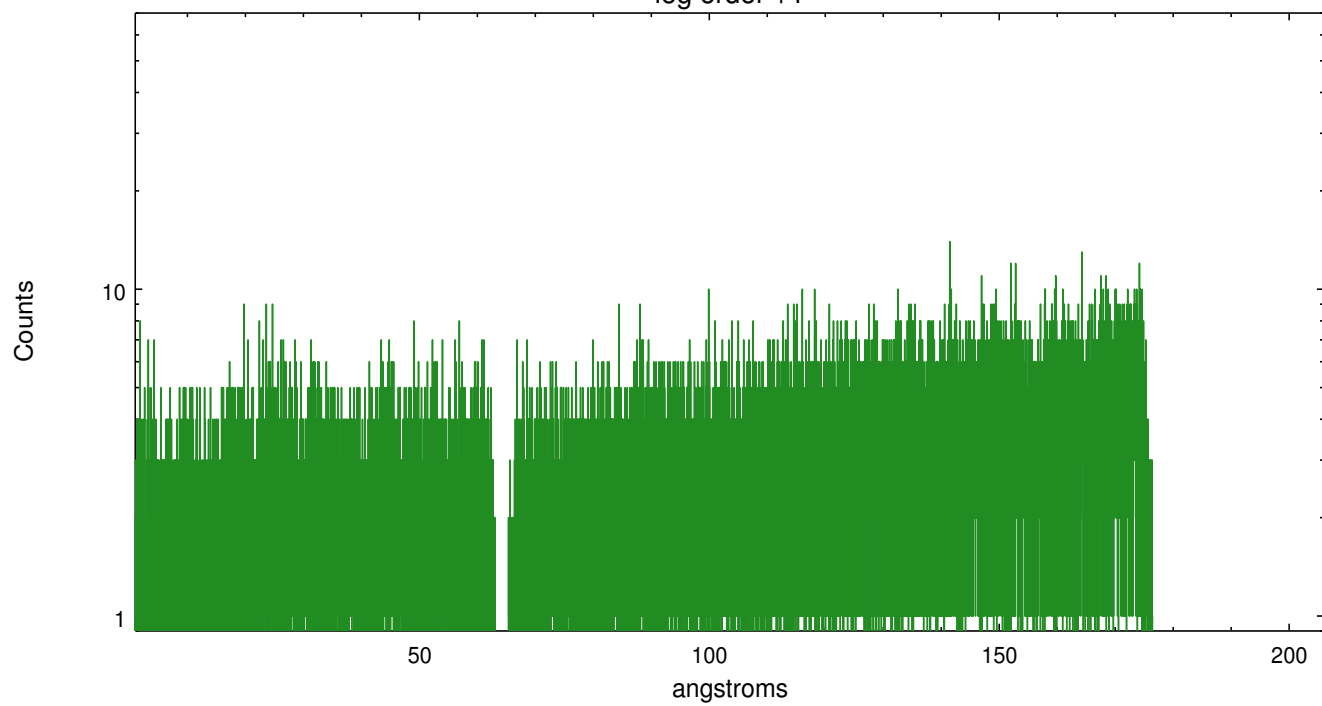


LETG Zero Order

leg order -1



leg order +1



A Summary

A.1 Status

V&V Scientist	Joy Nichols
V&V Date (YYYY-MM-DD)	2012.08.21
V&V Edition	1
V&V Disposition and Status	OK
V&V Charge Time	21.8173823

A.2 Comments