

V&V Reference Report

L2 ASCDS Version : 8.4.4

Observation 10720 - L2 Version 2
Chandra X-Ray Center

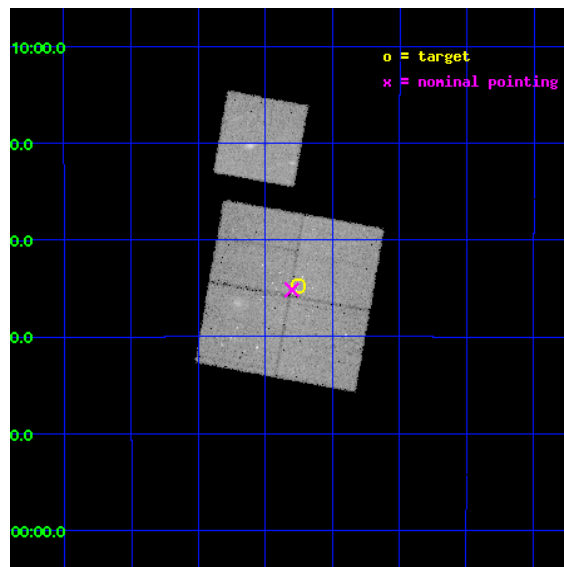
L2 Processing Date : May 23 2012

Contents

1	Front	2
2	OBI	3
2.1	OBI	3
2.1.1	Images	3
2.1.2	Bias	3
2.1.3	Parameters	4
2.1.4	Events	4
2.2	Compared Parameters	5
2.3	Aspect	6
2.4	Star Slots	9
2.4.1	Slot 3	9
2.4.2	Slot 4	10
2.4.3	Slot 5	11
2.4.4	Slot 6	12
2.4.5	Slot 7	13
2.5	FID Slots	14
2.5.1	Slot 0	14
2.5.2	Slot 1	15
2.5.3	Slot 2	16
A	Summary	17
A.1	Status	17
A.2	Comments	17

1 Front

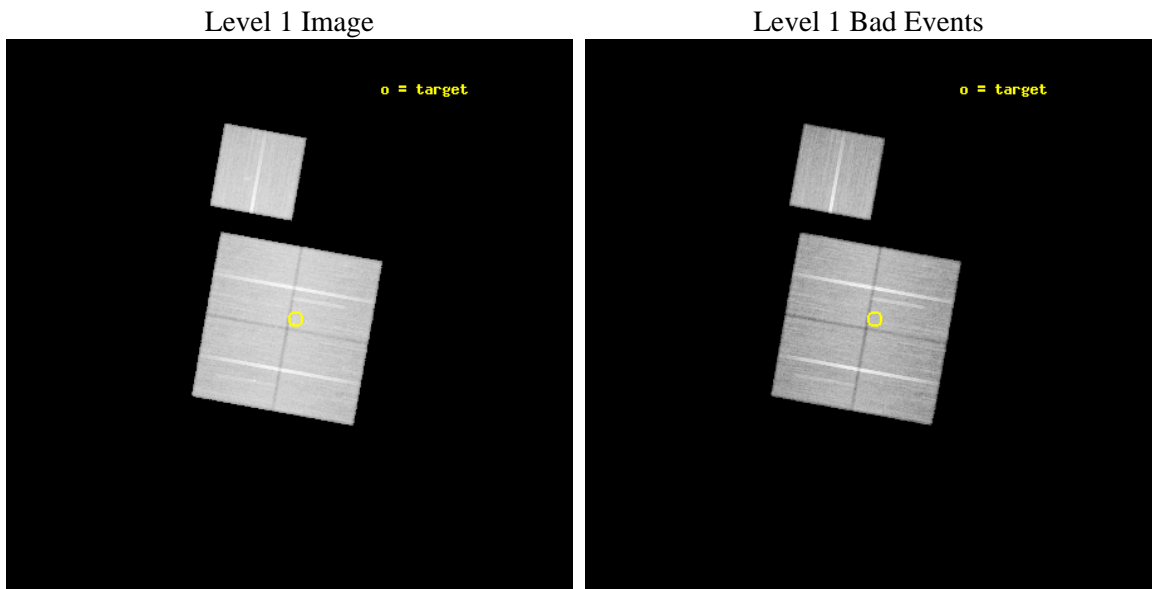
seq_num	600770	Sequence number
obs_id	10720	Observation id
title	NGC 1232 population study	Proposal title
observer	Professor Gordon Garmire	Principal investigator
object	NGC 1232	Source name
dtcycle	0	
cycle	P	events from which exps? Prim/Second/Both
ra_targ	47.439167	Observer's specified target RA [deg]
dec_targ	-20.579389	Observer's specified target Dec [deg]
ra_nom	47.450587093002	Nominal RA [deg]
dec_nom	-20.586040561287	Nominal Dec [deg]
roll_nom	10.212689662364	Nominal Roll [deg]
revision	2	Processing version of data
ontime	47634.477365494	Sum of GTIs [s]
livetime	47012.097850722	Livetime [s]
ontime0	47643.900366426	Sum of GTIs [s]
ontime1	47634.477375329	Sum of GTIs [s]
ontime2	47637.61835587	Sum of GTIs [s]
ontime3	47634.477365494	Sum of GTIs [s]
ontime6	47640.759366214	Sum of GTIs [s]
l2events	154426	Number of level 2 events



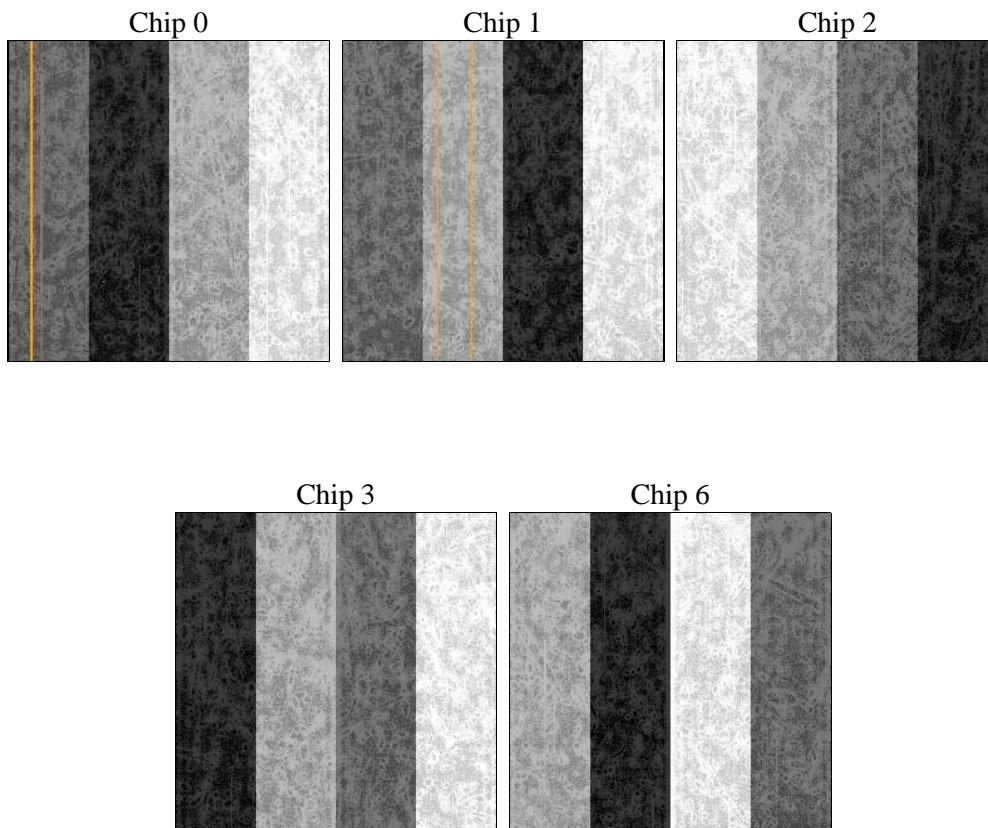
2 OBI

2.1 OBI

2.1.1 Images



2.1.2 Bias



2.1.3 Parameters

obi_num	0	Obi number	sched_exp_time	47500.000000	[s] Scheduled observation exposure time
ascdsver	8.4.4	Processing system revision	ontime	47634.477365494	Sum of GTIs [s]
caldbver	4.4.9	 	ontime0	47643.900366426	Sum of GTIs [s]
date	2012-05-23T13:09:10	Date and time of file creation	ontime1	47634.477375329	Sum of GTIs [s]
revision	2	Processing version of data	ontime2	47637.61835587	Sum of GTIs [s]
			ontime3	47634.477365494	Sum of GTIs [s]
			ontime6	47640.759366214	Sum of GTIs [s]
			l1events	1878226	Number of level 1 events

2.1.4 Events

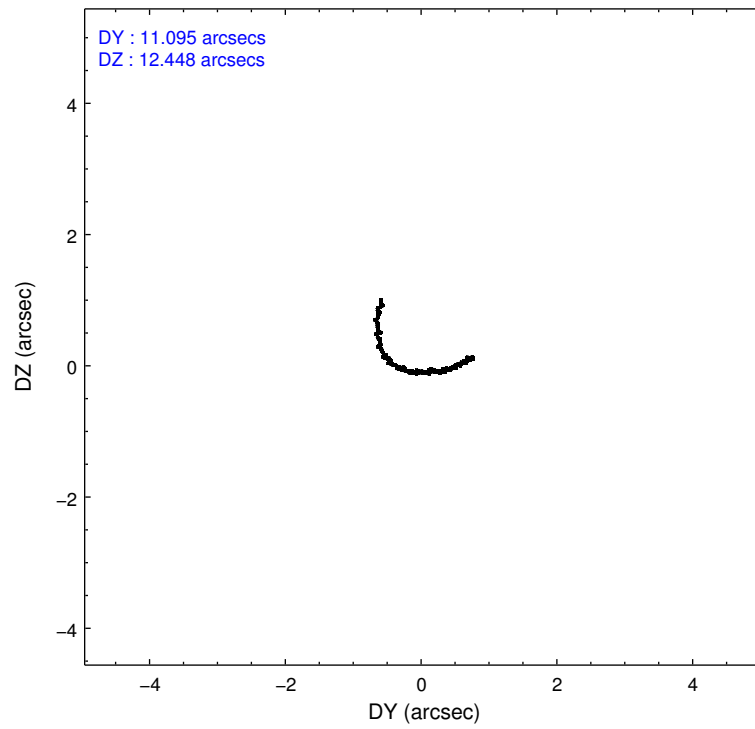
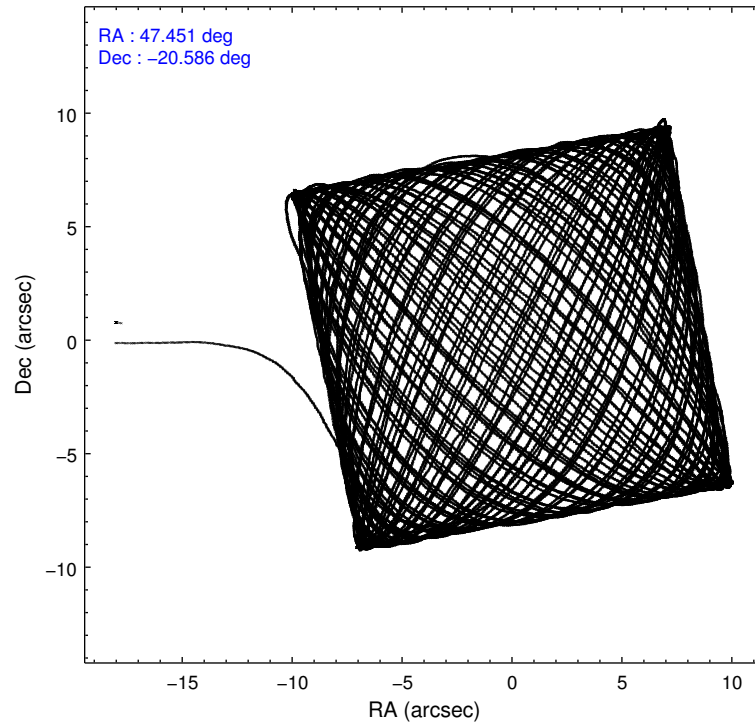
	ccd 0	ccd 1	ccd 2	ccd 3	ccd 6
level 1 events	360504	349373	403759	378750	385840
rejected events	321942	311344	367577	342789	346696
rejected %	89%	89%	91%	90%	89%

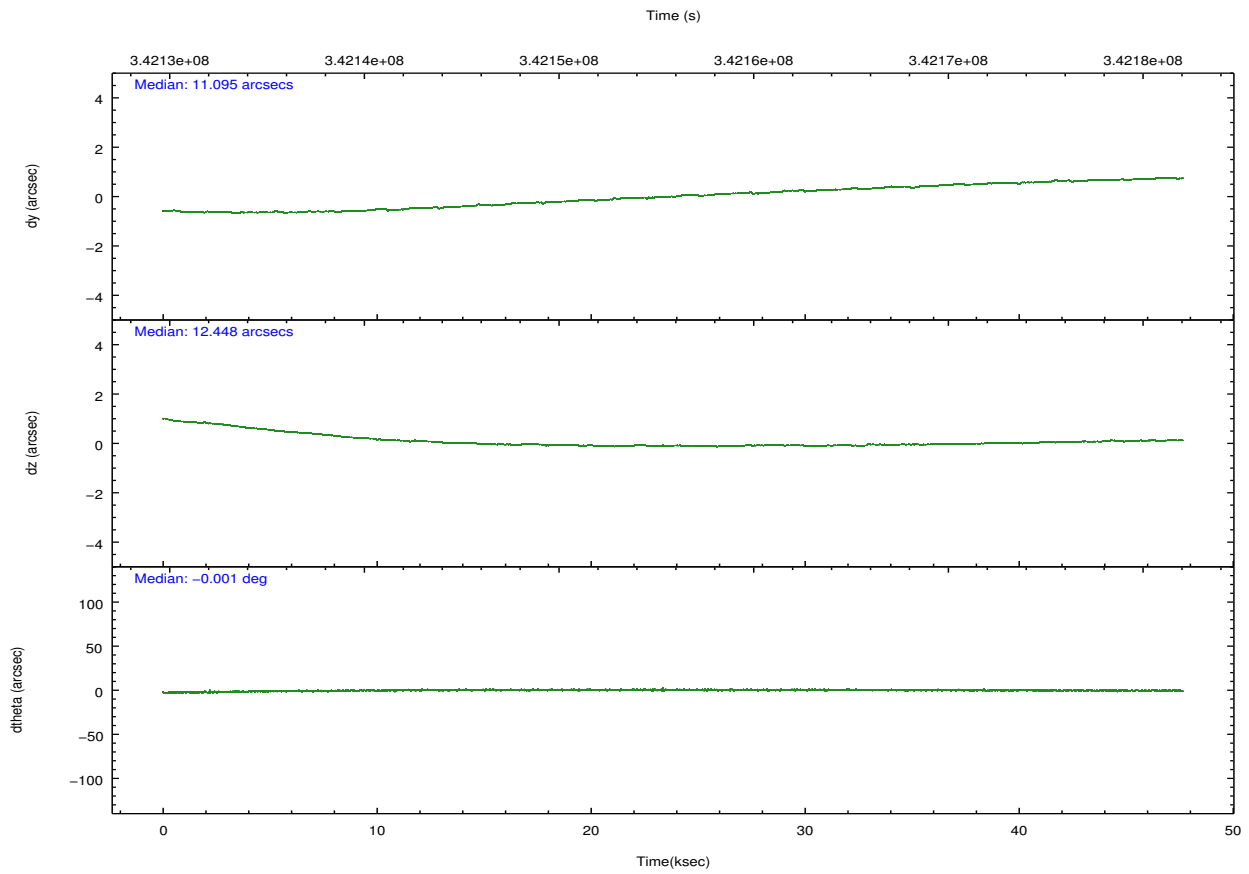
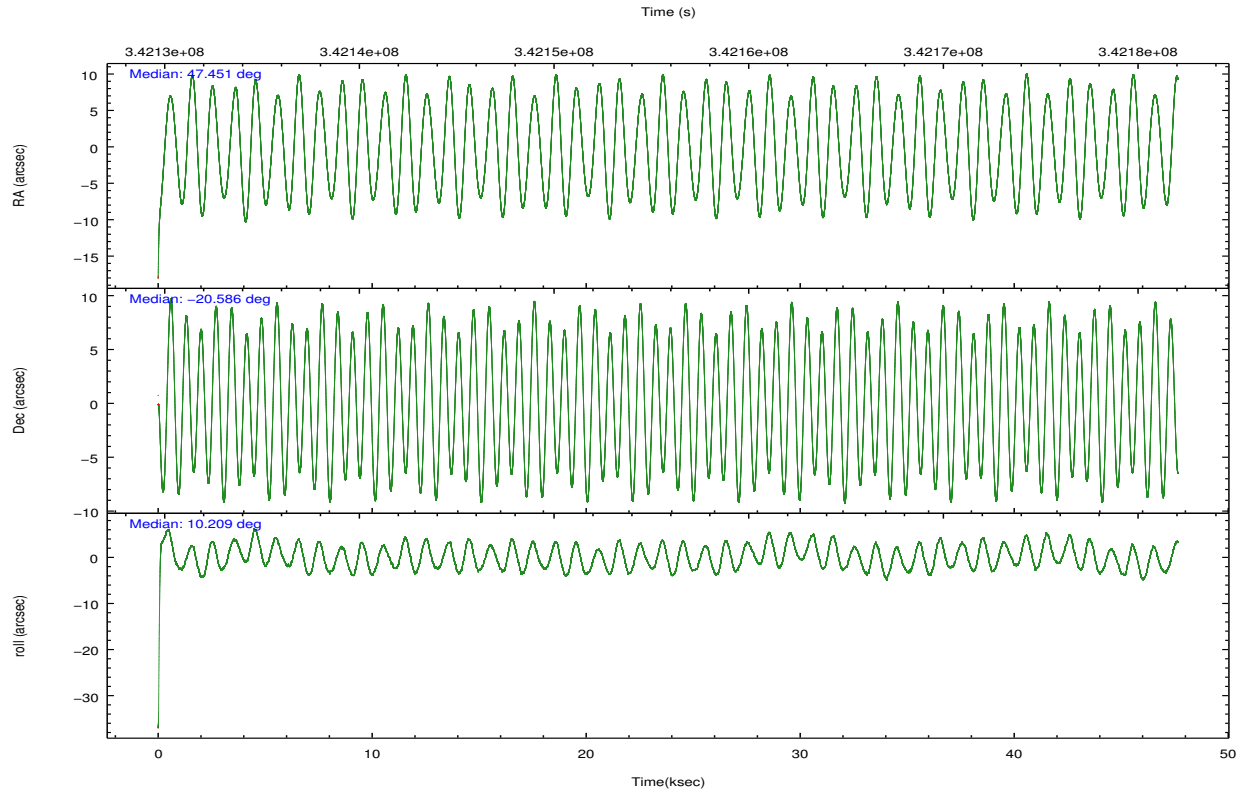
	ccd 0	ccd 1	ccd 2	ccd 3	ccd 6
grade 0 events	14951	13250	13489	13952	14975
	4%	3%	3%	3%	3%
grade 1 events	188	221	247	240	203
	0%	0%	0%	0%	0%
grade 2 events	9386	8773	9332	8165	8757
	2%	2%	2%	2%	2%
grade 3 events	4242	4427	3767	3930	4330
	1%	1%	0%	1%	1%
grade 4 events	3912	4423	3851	3937	3999
	1%	1%	0%	1%	1%
grade 5 events	11693	12857	10774	13714	13117
	3%	3%	2%	3%	3%
grade 6 events	6915	8055	6511	6744	7942
	1%	2%	1%	1%	2%
grade 7 events	309217	297367	355788	328068	332517
	85%	85%	88%	86%	86%

2.2 Compared Parameters

Parameter	Planned	Actual	Parameter	Planned	Actual
Instrument	ACIS	ACIS	Obspar format version number	7	7
Detector	ACIS-01236	ACIS-01236	Obspar file type	PREDICTED	ACTUAL
Grating	NONE	NONE	Obspar update status	NONE	UPDATED
Data mode	VFAINT	VFAINT	CCD I0 on	Y	Y
Observation mode	POINTING	POINTING	CCD I1 on	Y	Y
[deg] Pointing RA	47.428235	47.45058709300177	CCD I2 on	Y	Y
[deg] Pointing Dec	-20.603865	-20.58604056128679	CCD I3 on	Y	Y
[deg] Pointing Roll	9.996150	10.21268966236368	CCD S0 on	N	N
[mm] SIM focus pos	-0.782348	-0.7809083437167272	CCD S1 on	N	N
[mm] SIM defocus	0	0.001439871863259334	CCD S2 on	O1	Y
[mm] SIM translation stage pos	-233.592463	-233.5874344608287	CCD S3 on	N	N
[mm] SIM translation stage offset	0	-0.005018542100998502	CCD S4 on	N	N
[s] Observation start time (MET)	342132182.184000	342130683.5245	CCD S5 on	N	N
Observation start date	2008-11-03T20:41:57	2008-11-03T20:18:03	Number of optional ACIS chips dropped	0	0
[s] Observation end time (MET)	342179682.184000	342180080.83944	On-chip summing requested	N	N
Observation end date	2008-11-04T09:53:37	2008-11-04T10:01:20	Subarray requested	NONE	NONE
Read mode	TIMED	TIMED	Alternating exposures requested	N	N
			[s] Primary exposure time	0.000000	3.1

2.3 Aspect



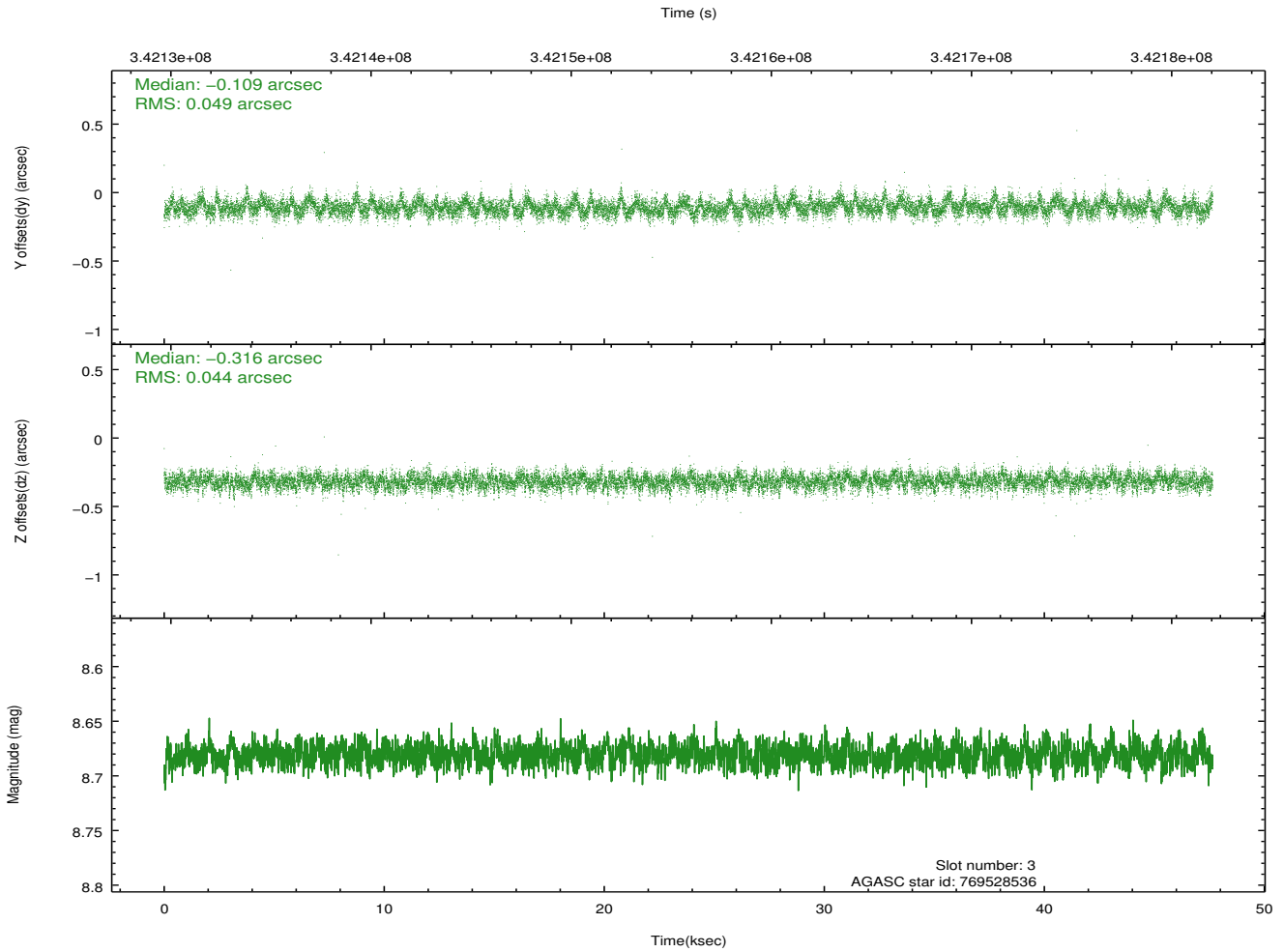
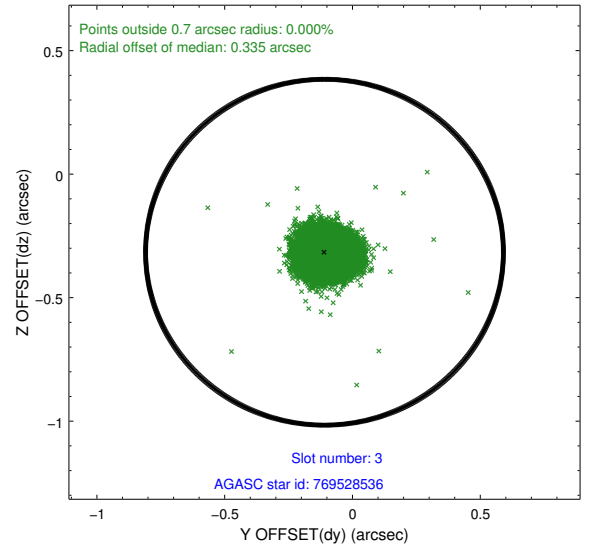
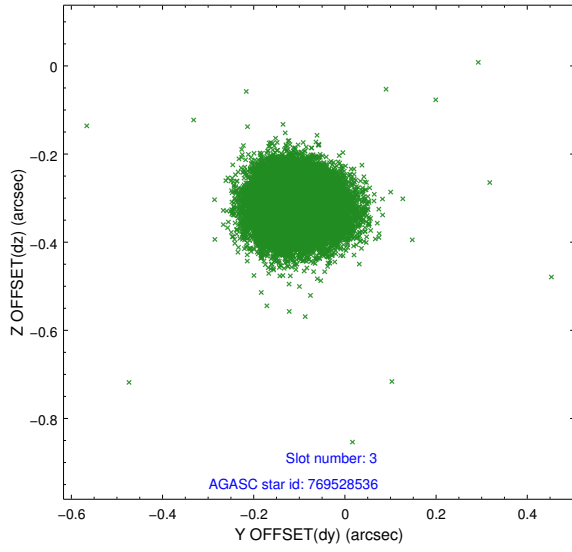


Slot Statistics

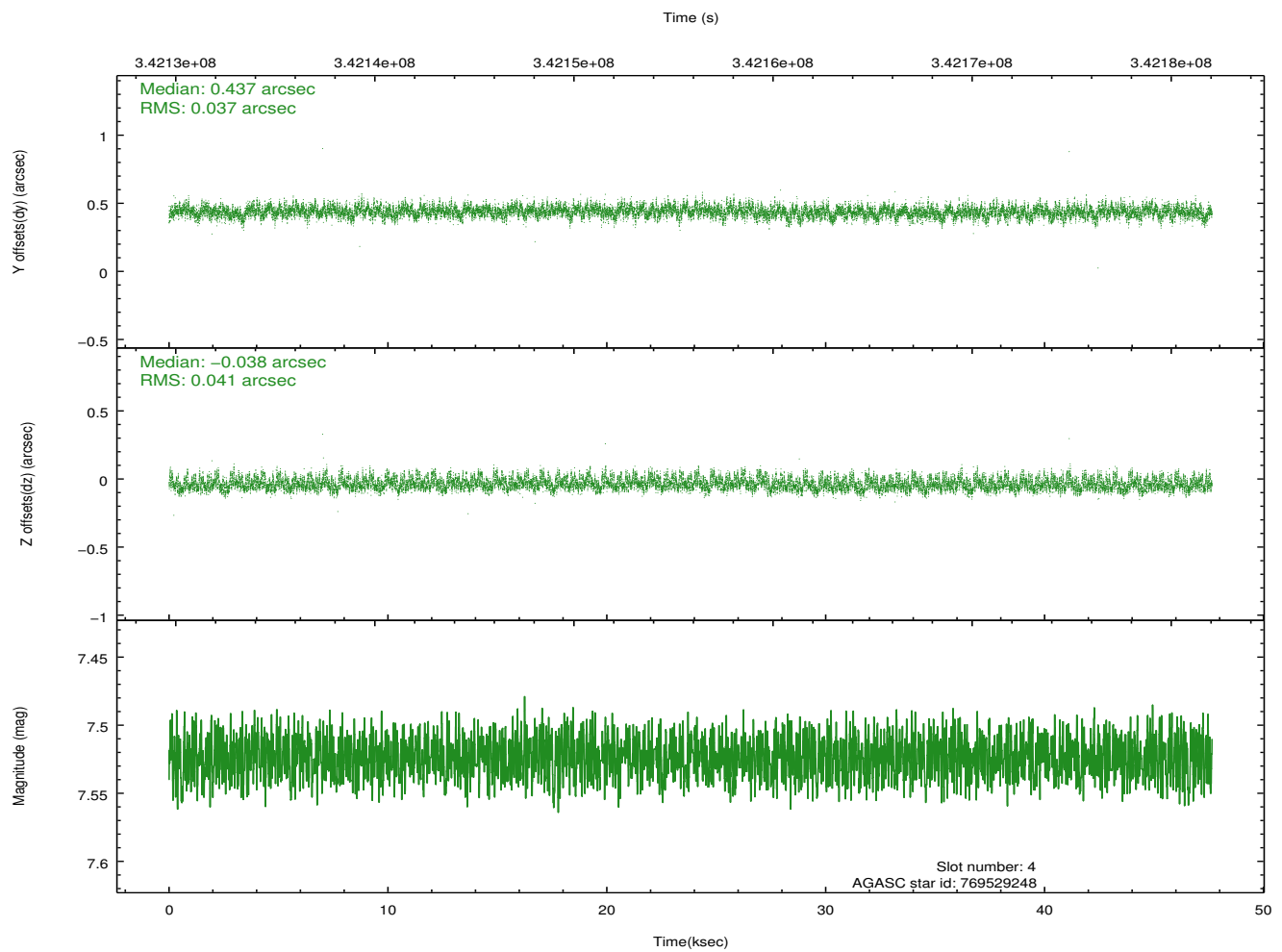
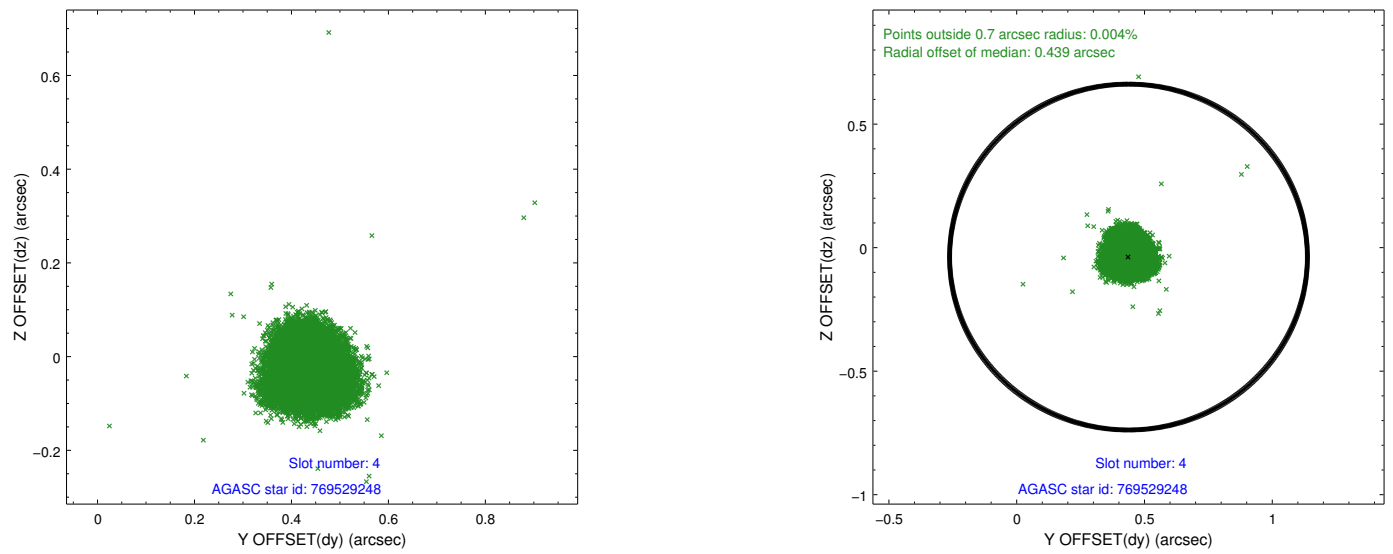
slot	status	id	mag	n_pts	med_dy	med_dz	dr1	dr2	ra	dec	mean_y	mean_z
0	FID	ACIS-I-1	7.02	11622	0.051	-0.003	0.014	0.020	0.000000	0.000000	928.52	-836.10
1	FID	ACIS-I-5	7.01	11621	-0.178	0.069	0.016	0.023	0.000000	0.000000	-1819.81	1061.50
2	FID	ACIS-I-6	7.02	11623	0.032	0.005	0.011	0.022	0.000000	0.000000	394.08	1705.90
3	GUIDE	769528536	8.68	23231	-0.109	-0.316	0.070	0.113	46.820282	-20.648792	-2045.53	192.06
4	GUIDE	769529248	7.52	23243	0.437	-0.038	0.059	0.094	47.673143	-20.111513	1123.45	1601.36
5	GUIDE	769532344	8.55	23227	-0.081	0.194	0.073	0.114	47.077000	-21.186579	-1525.05	-1862.85
6	GUIDE	770451224	7.79	23236	-0.117	0.203	0.056	0.091	48.005011	-20.791582	1793.97	-1005.60
7	GUIDE	769530672	8.12	23234	-0.128	-0.047	0.089	0.148	47.403721	-20.012503	288.04	2110.68

2.4 Star Slots

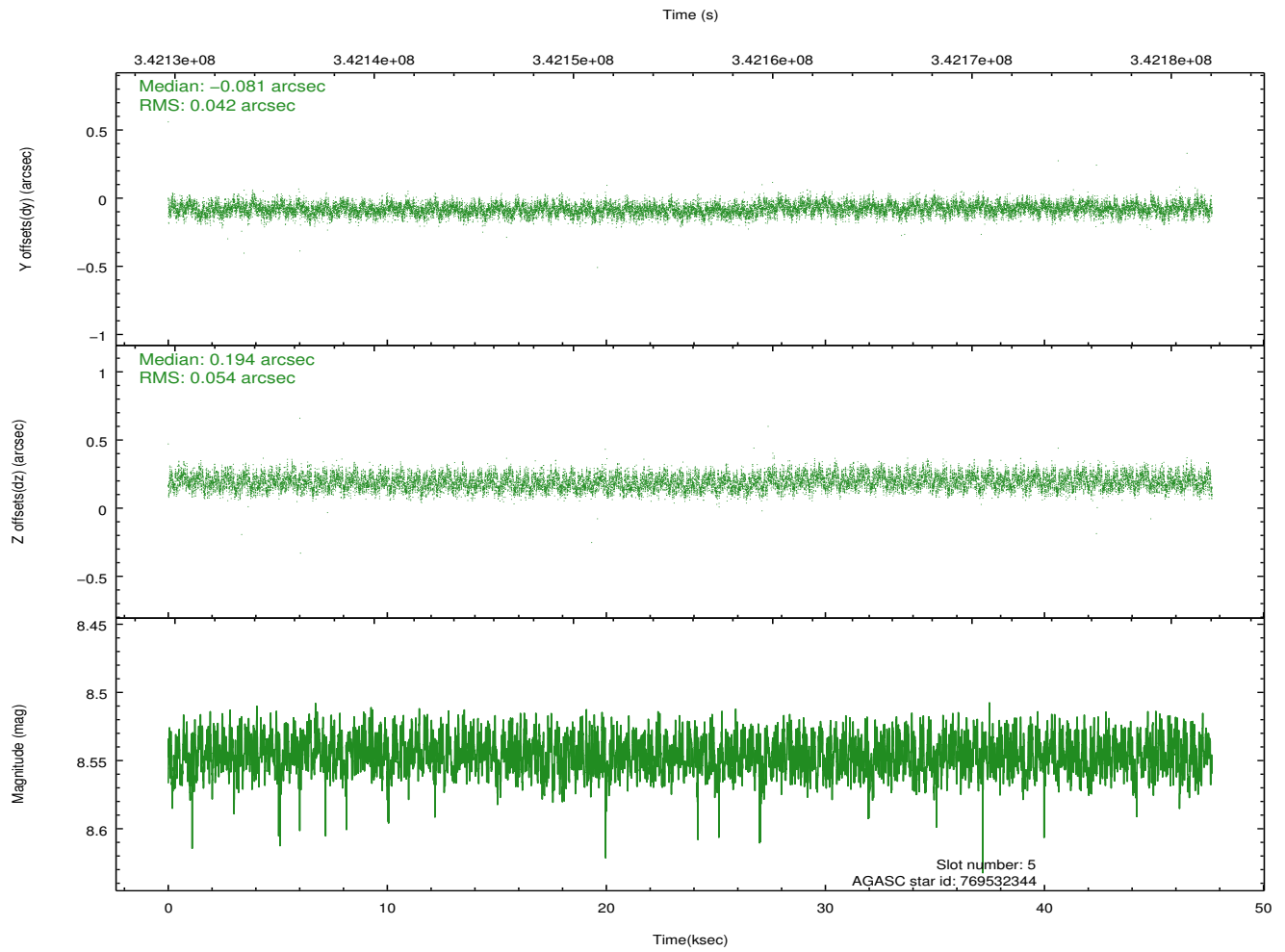
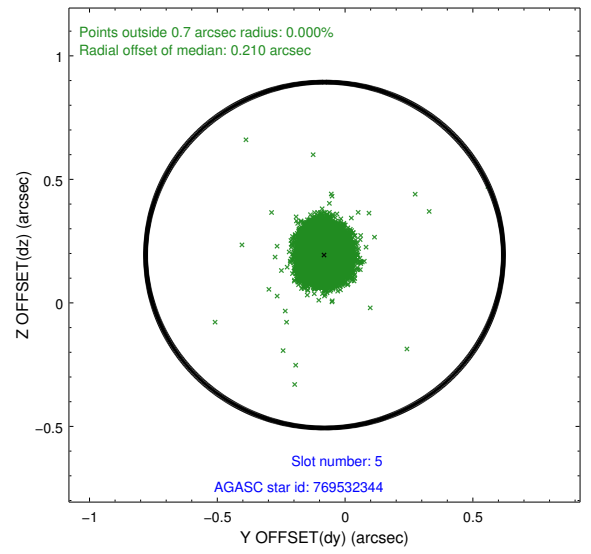
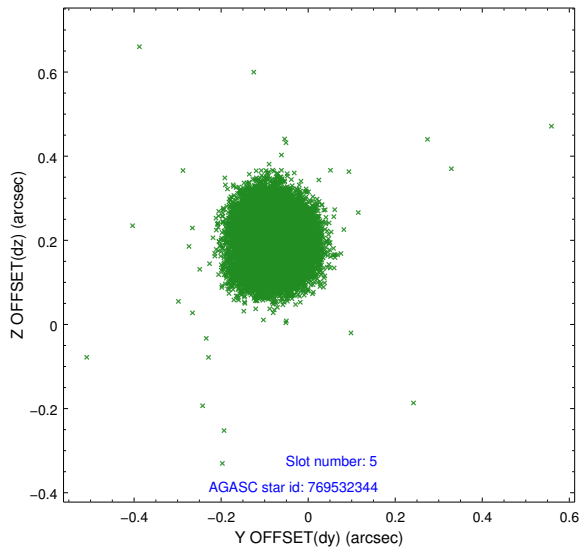
2.4.1 Slot 3



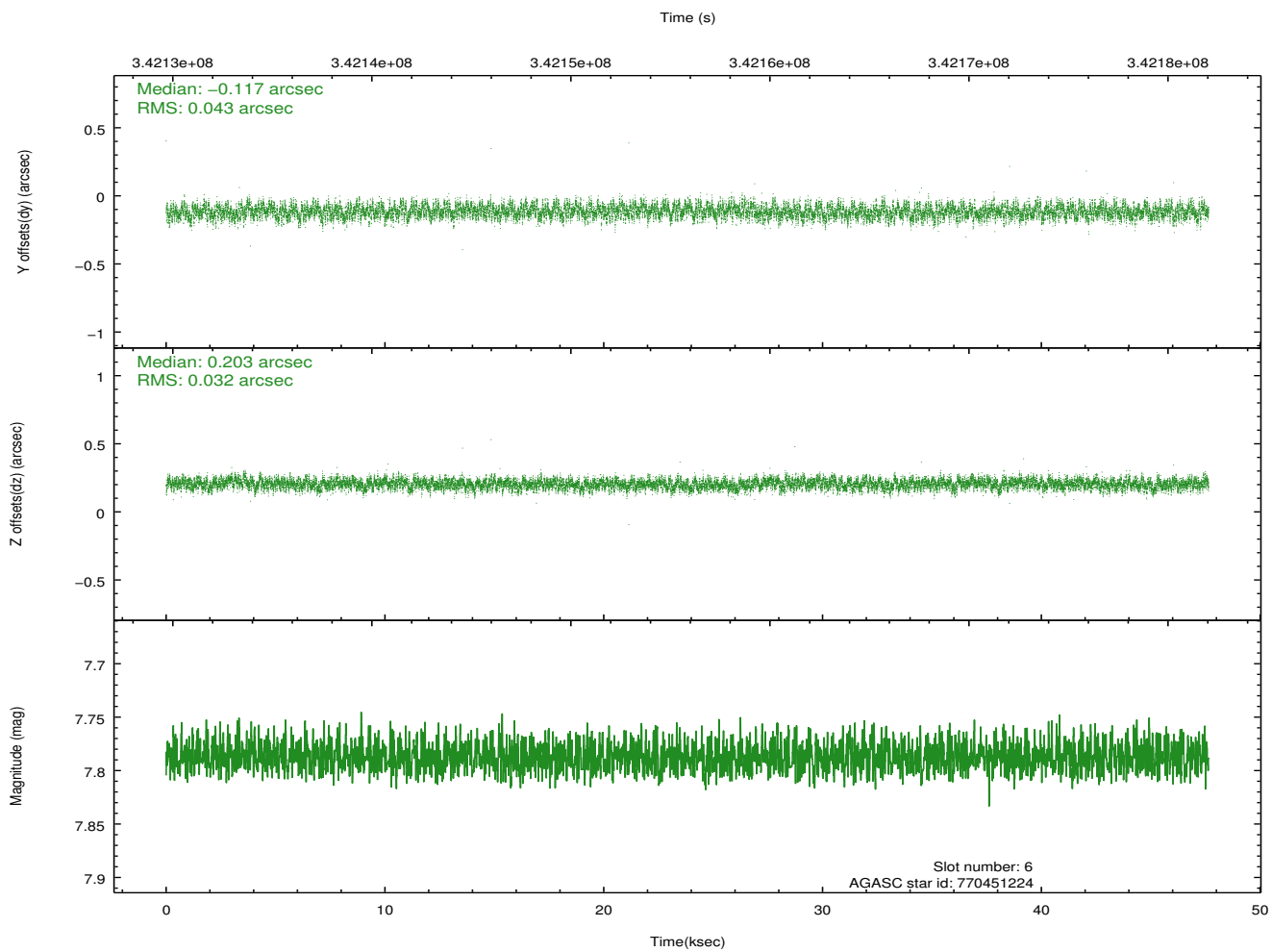
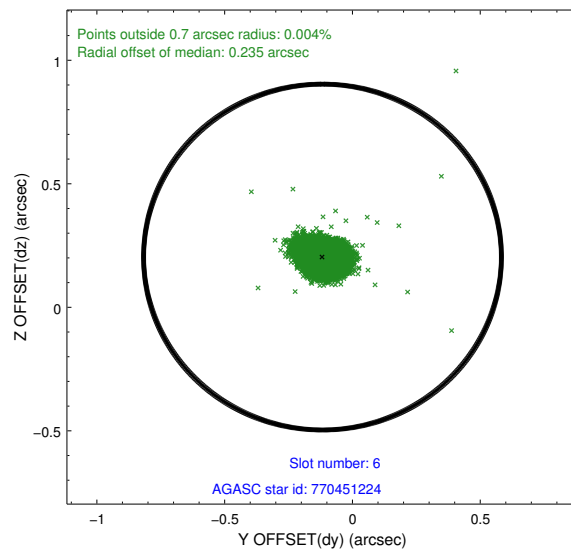
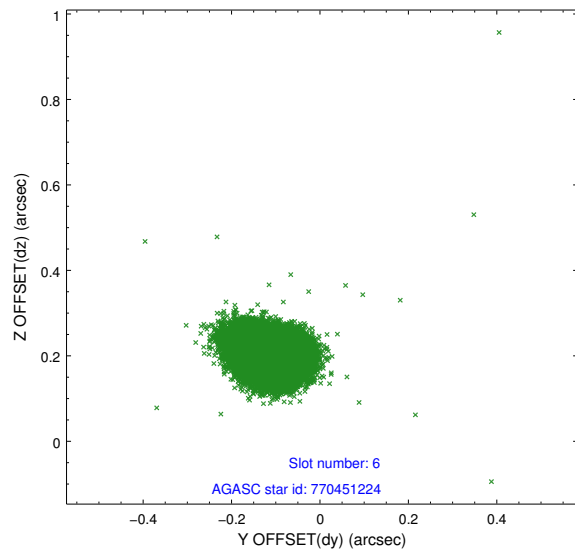
2.4.2 Slot 4



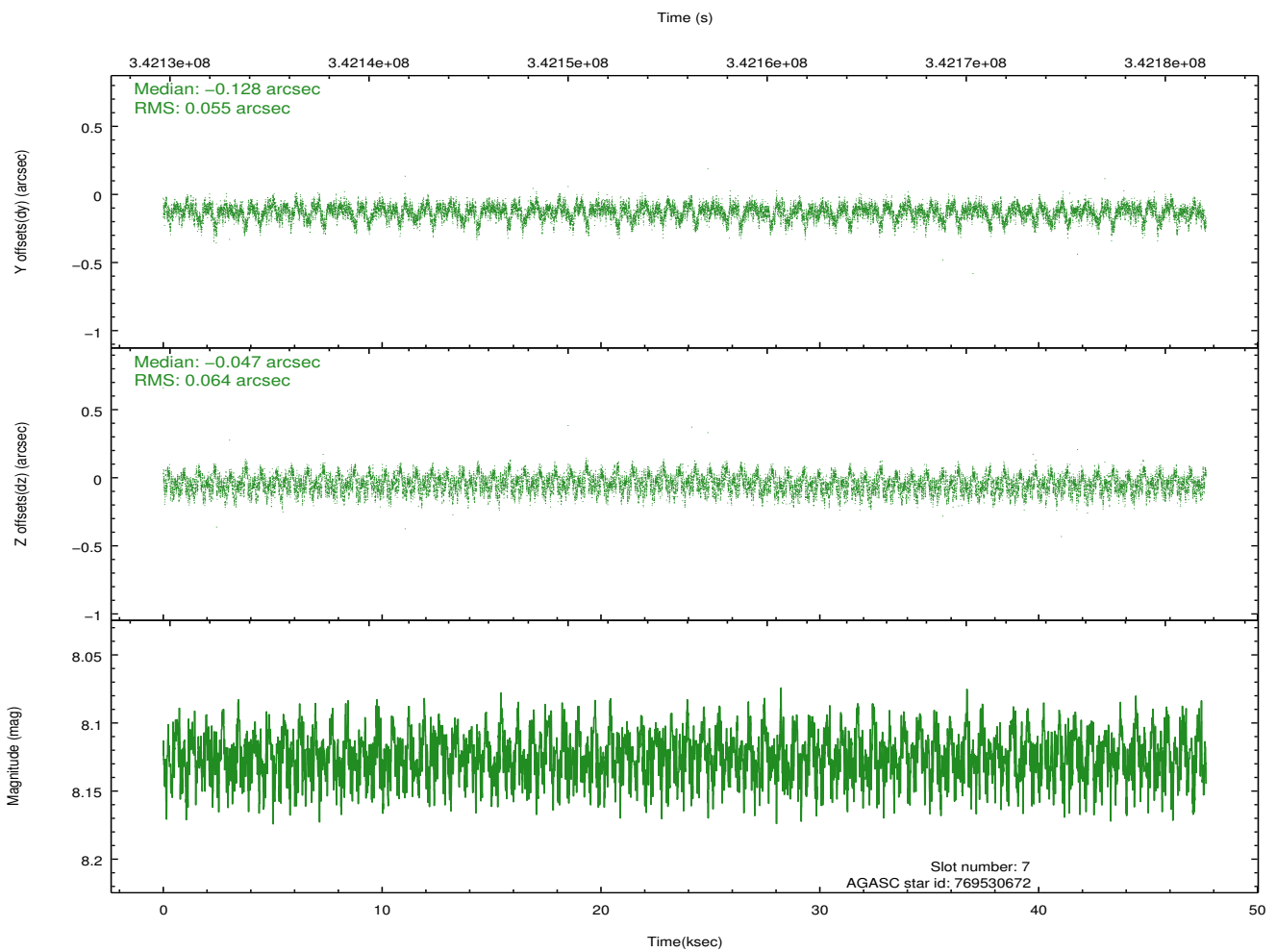
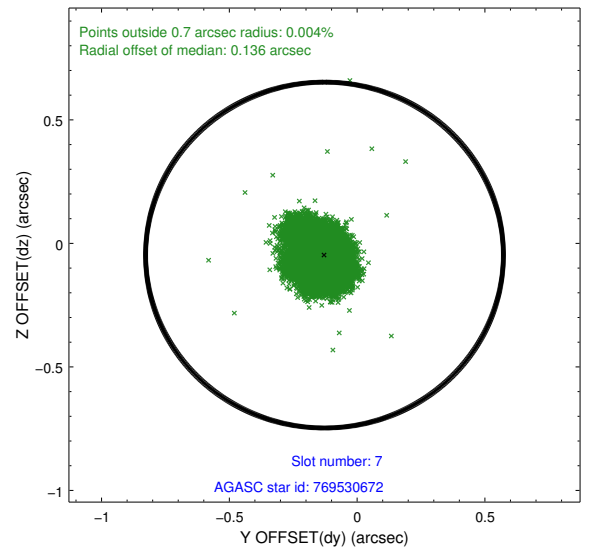
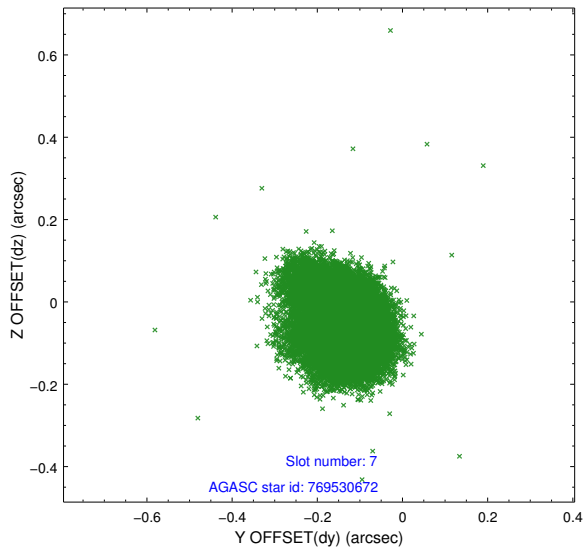
2.4.3 Slot 5



2.4.4 Slot 6

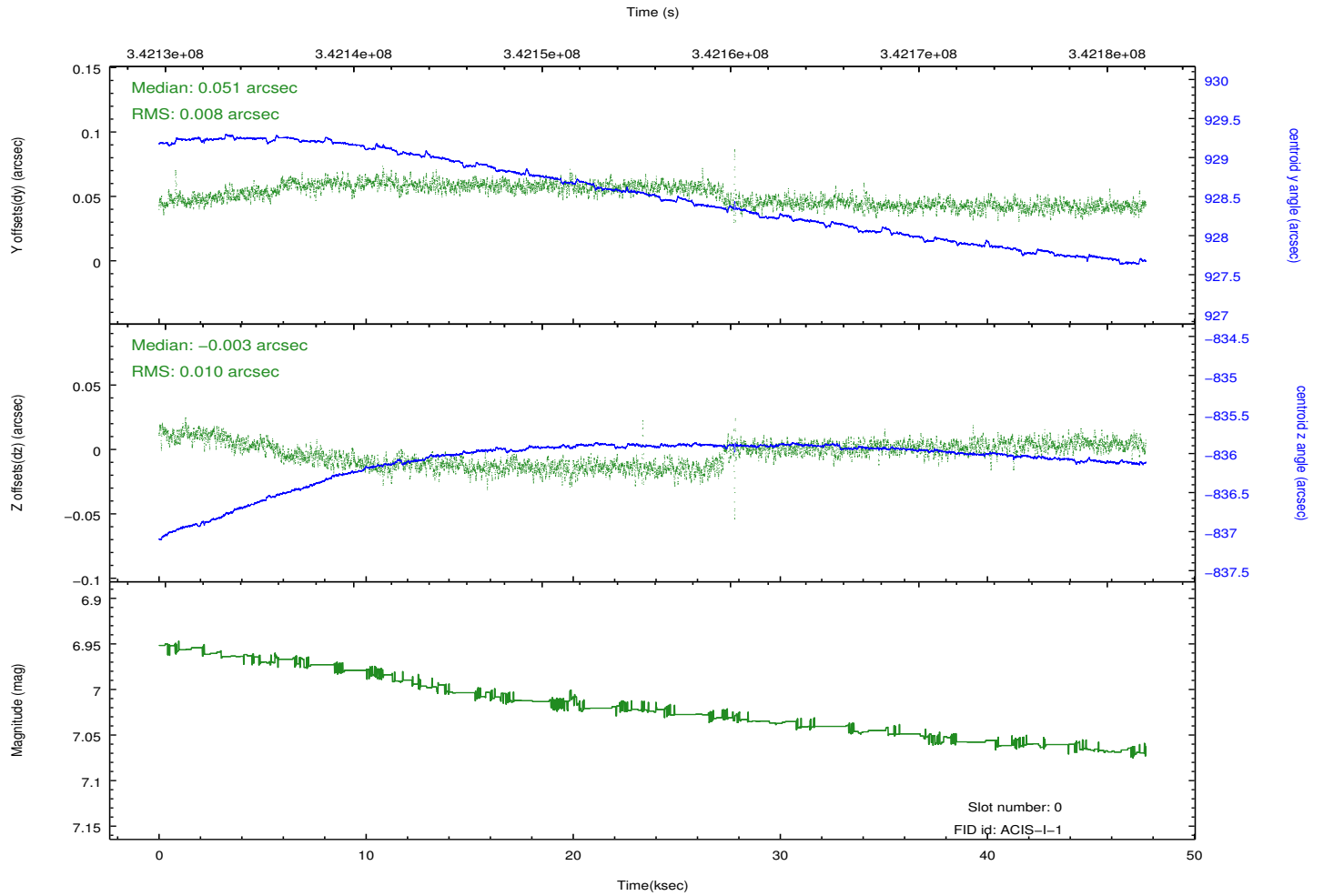
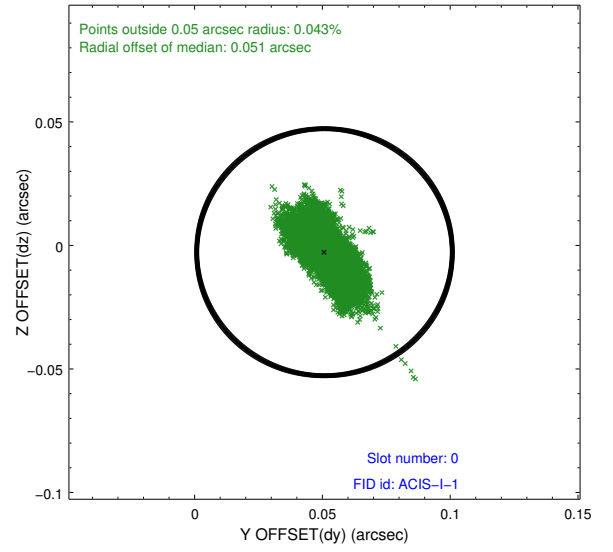
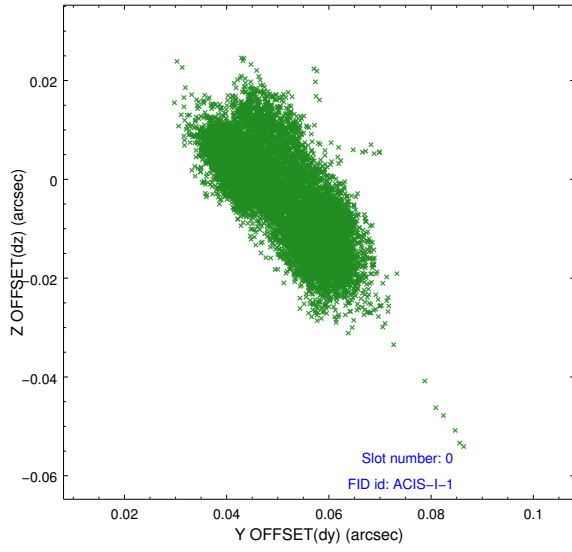


2.4.5 Slot 7

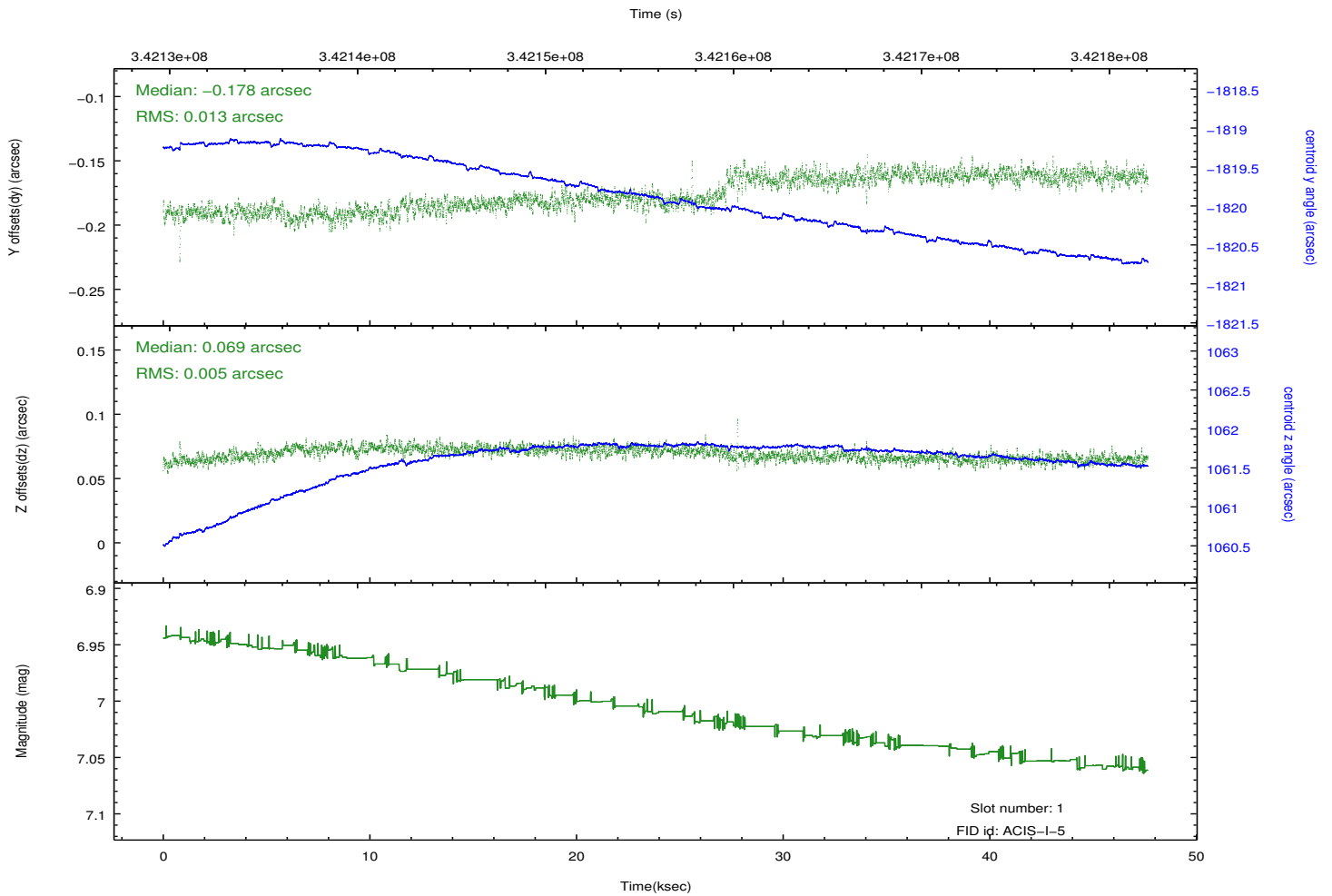
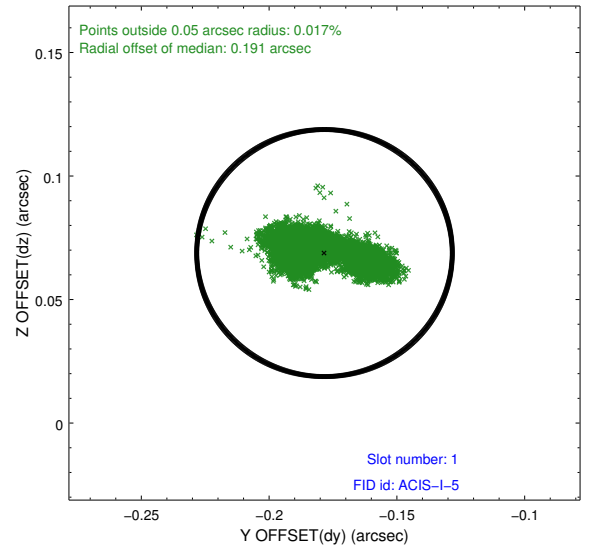
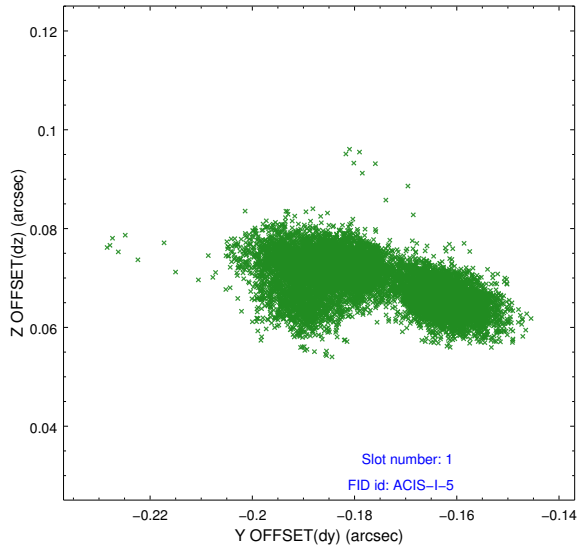


2.5 FID Slots

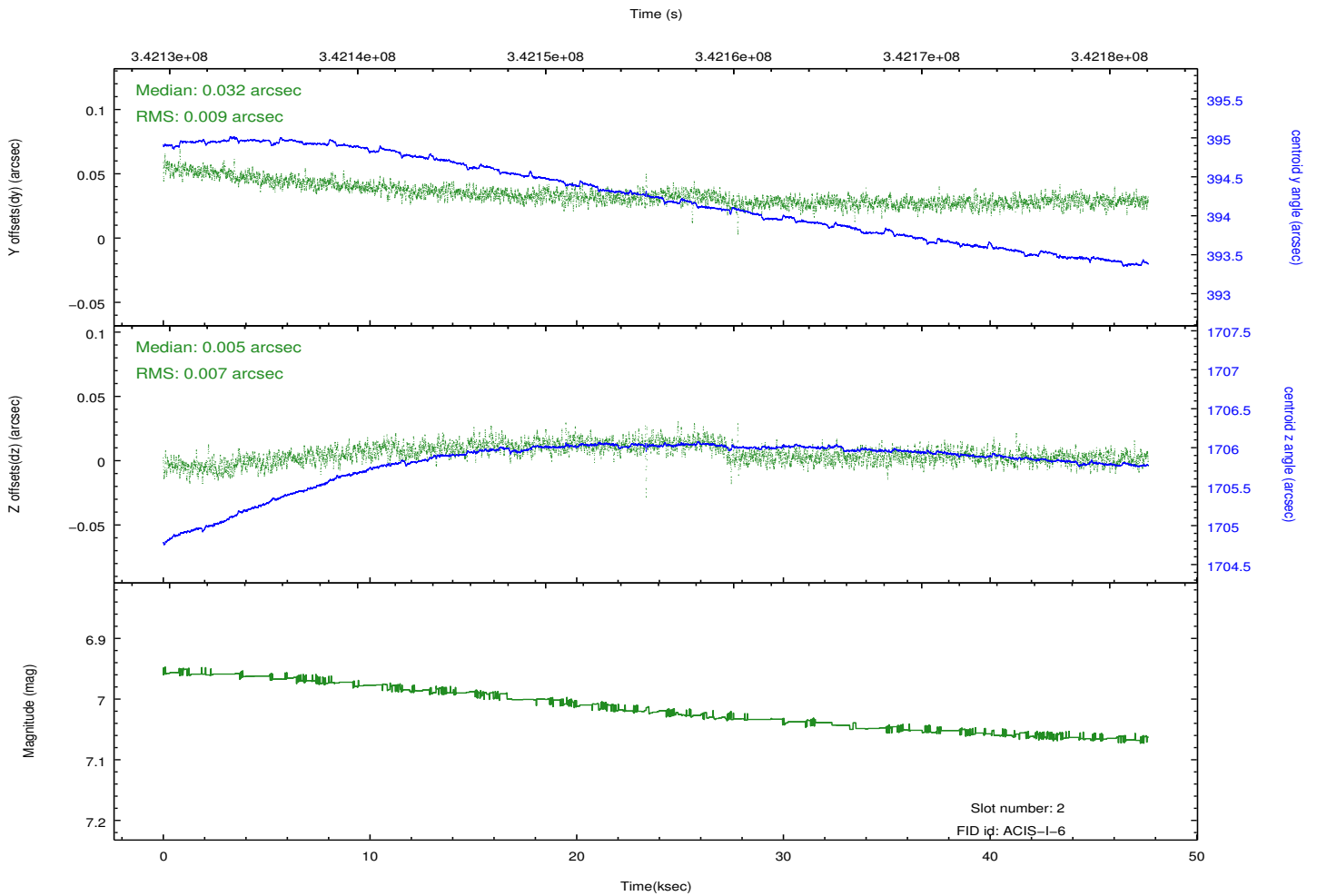
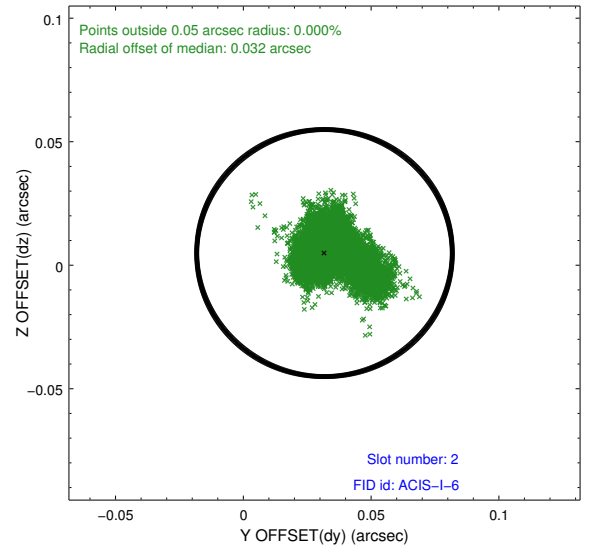
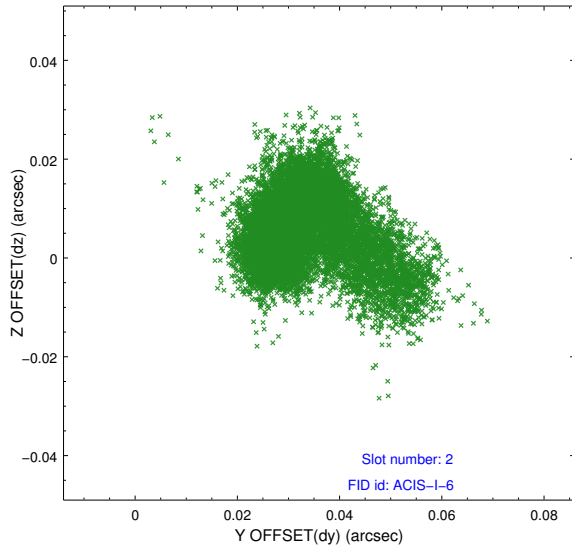
2.5.1 Slot 0



2.5.2 Slot 1



2.5.3 Slot 2



A Summary

A.1 Status

V&V Scientist	Beth Sundheim
V&V Date (YYYY-MM-DD)	2012.05.31
V&V Edition	1
V&V Disposition and Status	OK
V&V Charge Time	47.6344773

A.2 Comments