

# V&V Reference Report

## L2 ASCDS Version : 8.4.4

Observation 10840 - L2 Version 3  
Chandra X-Ray Center

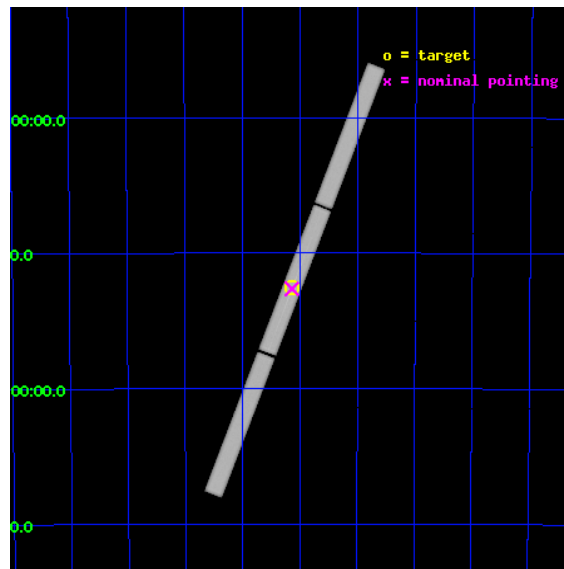
L2 Processing Date : Aug 13 2012

## Contents

<b>1</b>	<b>Front</b>	<b>2</b>
<b>2</b>	<b>OBI</b>	<b>3</b>
2.1	OBI . . . . .	3
2.1.1	Images . . . . .	3
2.1.2	Parameters . . . . .	4
2.1.3	Events . . . . .	4
2.2	Compared Parameters . . . . .	5
2.3	Aspect . . . . .	6
2.4	Star Slots . . . . .	9
2.4.1	Slot 3 . . . . .	9
2.4.2	Slot 4 . . . . .	10
2.4.3	Slot 5 . . . . .	11
2.4.4	Slot 6 . . . . .	12
2.4.5	Slot 7 . . . . .	13
2.5	FID Slots . . . . .	14
2.5.1	Slot 0 . . . . .	14
2.5.2	Slot 1 . . . . .	15
2.5.3	Slot 2 . . . . .	16
<b>3</b>	<b>Gratings</b>	<b>17</b>
3.1	LETG Arm . . . . .	17
<b>A</b>	<b>Summary</b>	<b>19</b>
A.1	Status . . . . .	19
A.2	Comments . . . . .	19

# 1 Front

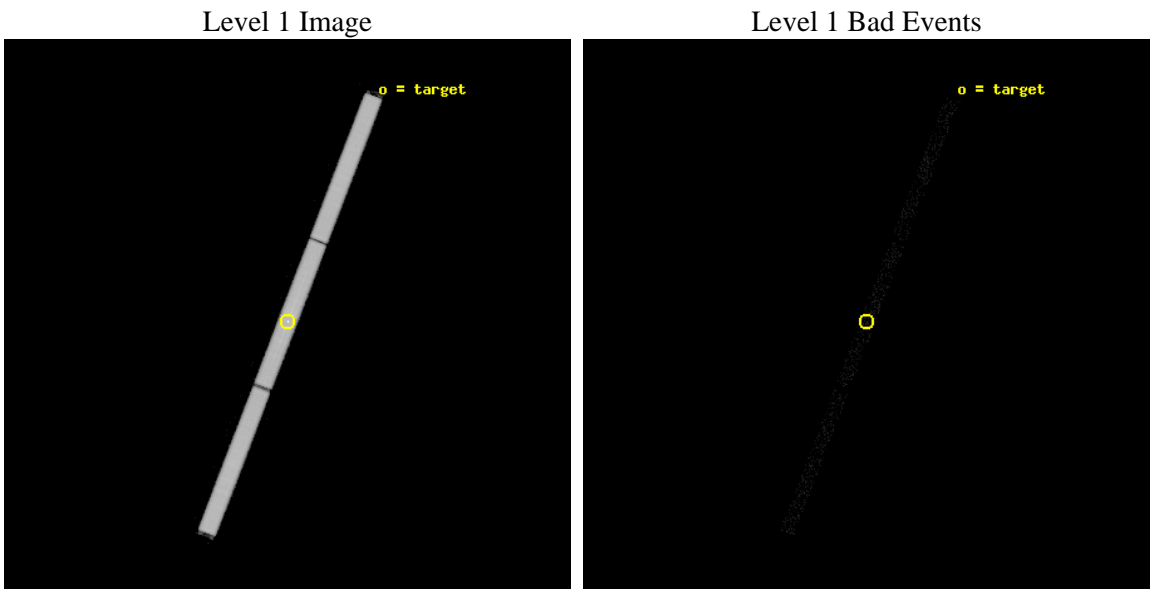
seq_num	900868	Sequence number
obs_id	10840	Observation id
title	A Benchmark Observation of the Warm-Hot Intergalactic Medium	Propo
observer	Dr. Taotao Fang	Principal investigator
object	H 2356-309	Source name
ra_targ	359.782917	Observer's specified target RA [deg]
dec_targ	-30.628056	Observer's specified target Dec [deg]
ra_nom	359.78484013484	Nominal RA [deg]
dec_nom	-30.632516821563	Nominal Dec [deg]
roll_nom	291.06834001494	Nominal Roll [deg]
revision	3	Processing version of data
ontime	15144.631998837	[s]
livetime	14989.903317921	Ontime multiplied by DTCOR
l2events	1312416	Number of level 2 events



## 2 OBI

### 2.1 OBI

#### 2.1.1 Images



## 2.1.2 Parameters

obi_num	0	Obi number	sched_exp_time	15000.000000	[s] Scheduled observation exposure time
ascdsver	8.4.5	Processing system revision	ontime	15144.631998837	[s]
caldbver	4.5.1.1	&#160	l1events	1824050	Number of level 1 events
date	2012-08-13T01:44:07	Date and time of file creation			
revision	3	Processing version of data			

## 2.1.3 Events

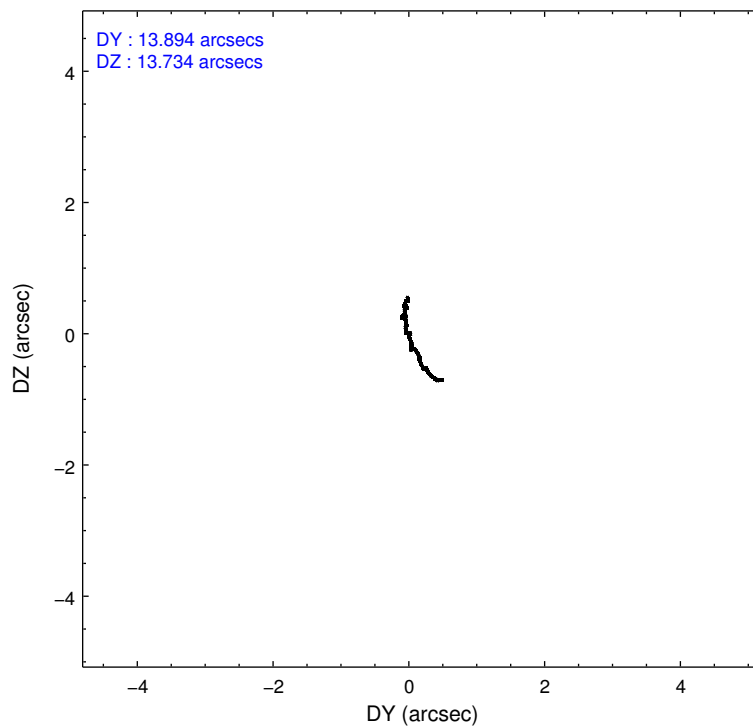
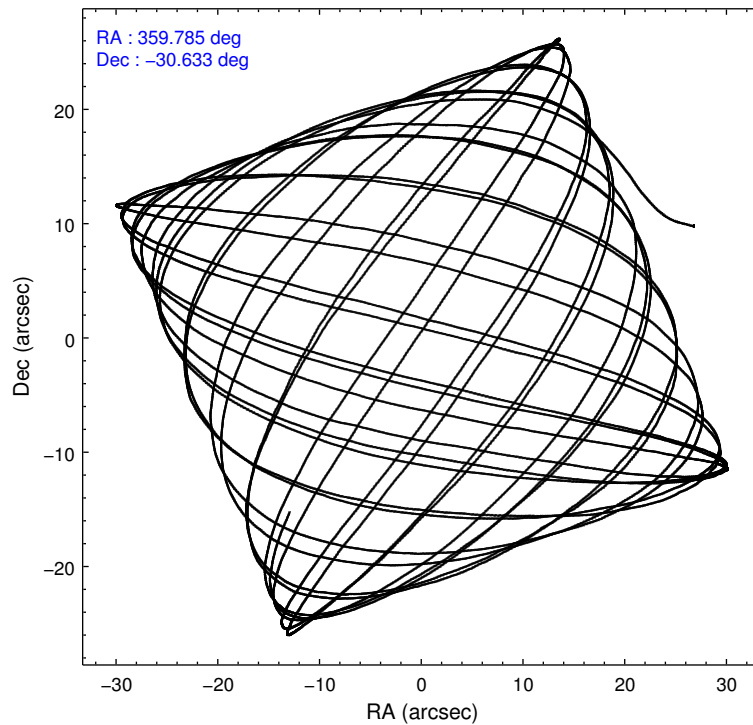
### Level 1 Events

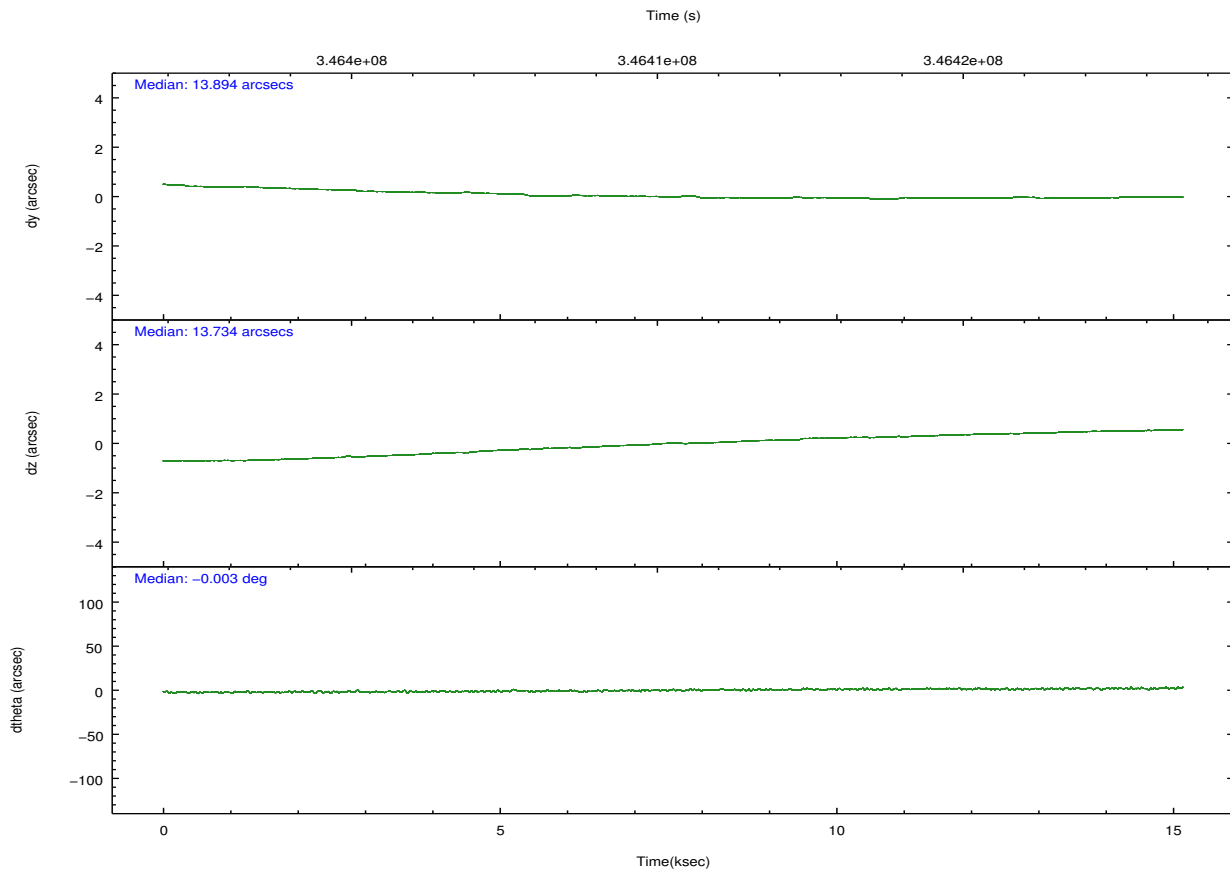
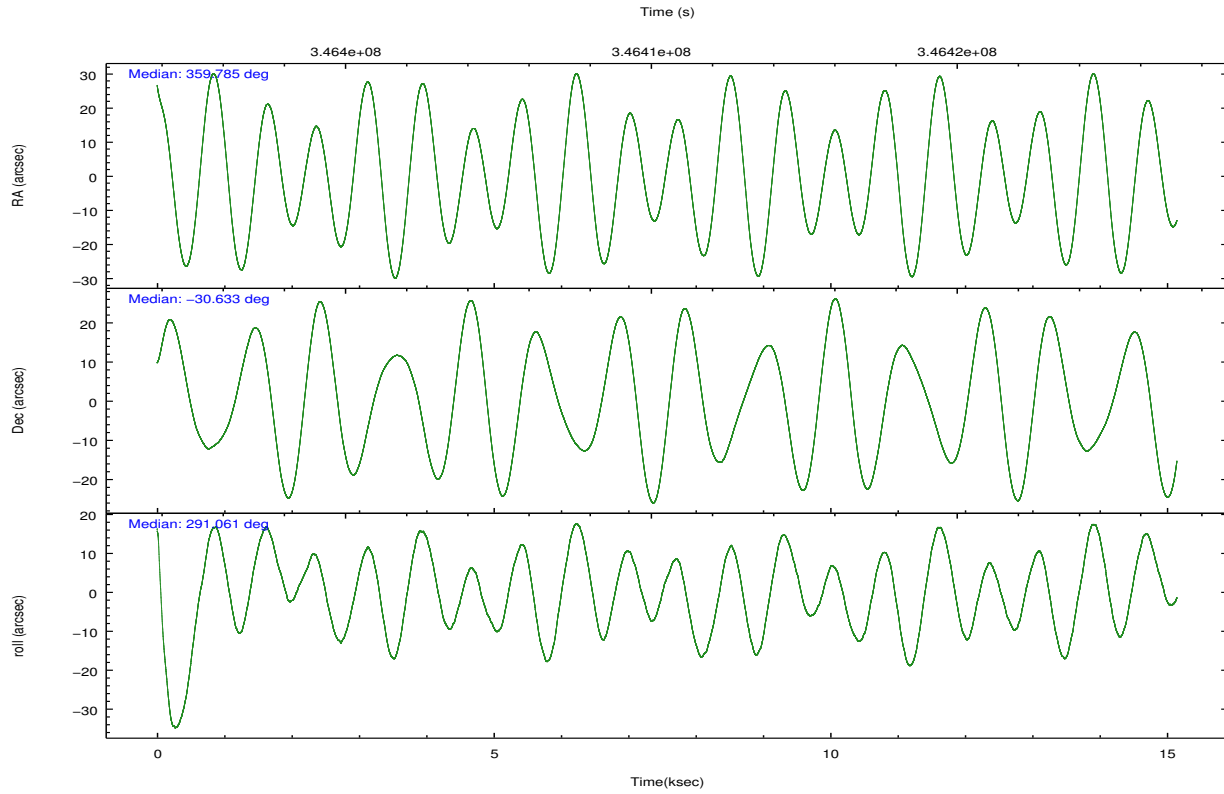
	<b>segment 1</b>	<b>segment 2</b>	<b>segment 3</b>
level 1 events	603676	614020	606354
rejected events	40269	39745	40133
rejected %	6%	6%	6%

## 2.2 Compared Parameters

Parameter	Planned	Actual	Parameter	Planned	Actual
Instrument	HRC	HRC	Obspar format version number	7	7
Detector	HRC-S	HRC-S	Obspar file type	PREDICTED	ACTUAL
Grating	LETG	LETG	Obspar update status	NONE	UPDATED
Data mode	OBSERVING	OBSERVING			
Observation mode	POINTING	POINTING			
[deg] Pointing RA	359.757870	359.7848401348376			
[deg] Pointing Dec	-30.615612	-30.63251682156318			
[deg] Pointing Roll	290.987247	291.068340014936			
[mm] SIM focus pos	-1.429586	-1.428180813131781			
[mm] SIM defocus	0.1037507710433287	0.1051558262725154			
[mm] SIM translation stage pos	250.455976	250.466033080201			
[mm] SIM translation stage offset	0	-0.01005468664627074			
[s] Observation start time (MET)	346402827.184000	346401650.66043			
Observation start date	2008-12-23T06:59:22	2008-12-23T06:40:50			
[s] Observation end time (MET)	346417827.184000	346418777.38627			
Observation end date	2008-12-23T11:09:22	2008-12-23T11:26:17			

## 2.3 Aspect



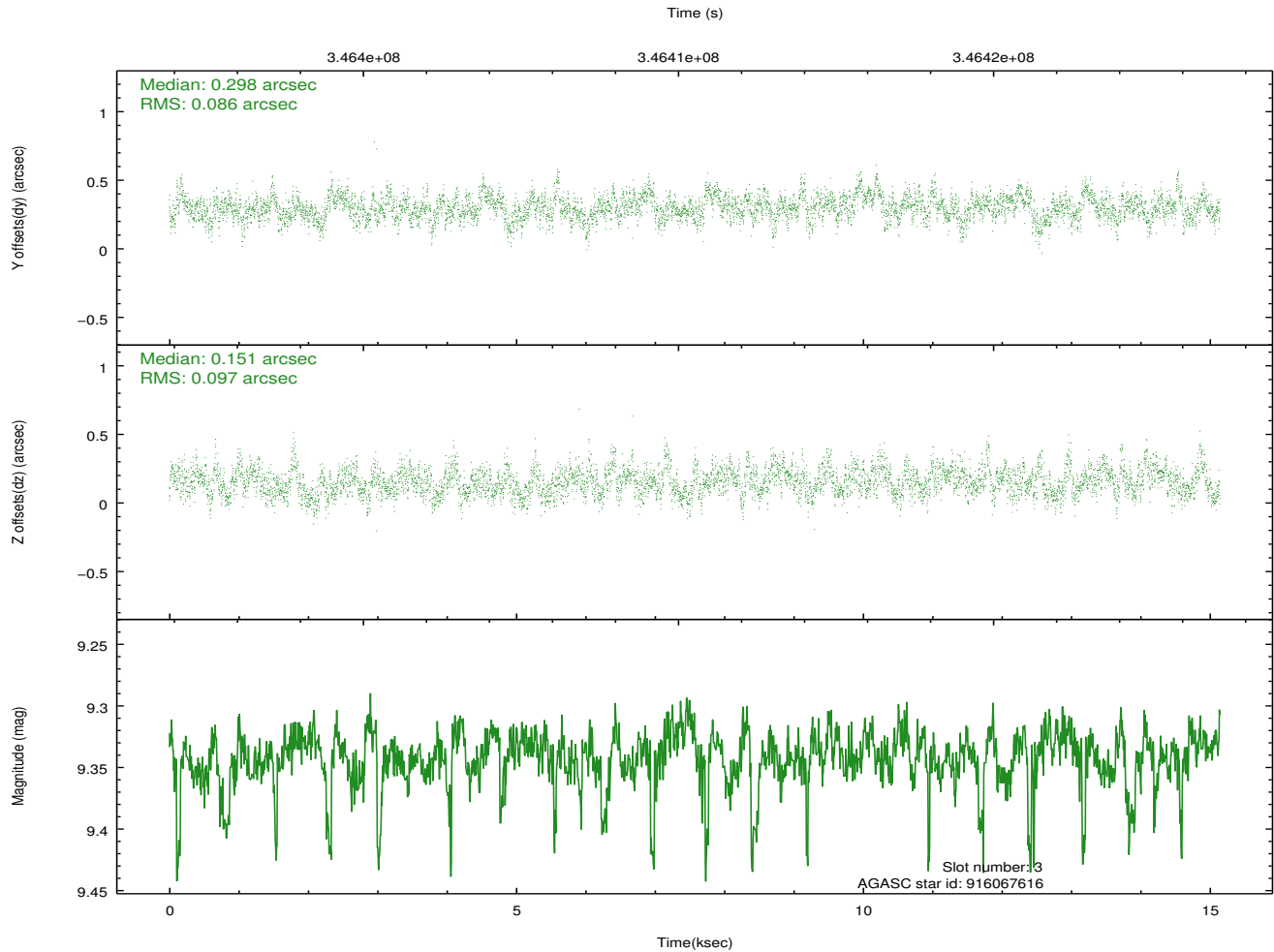
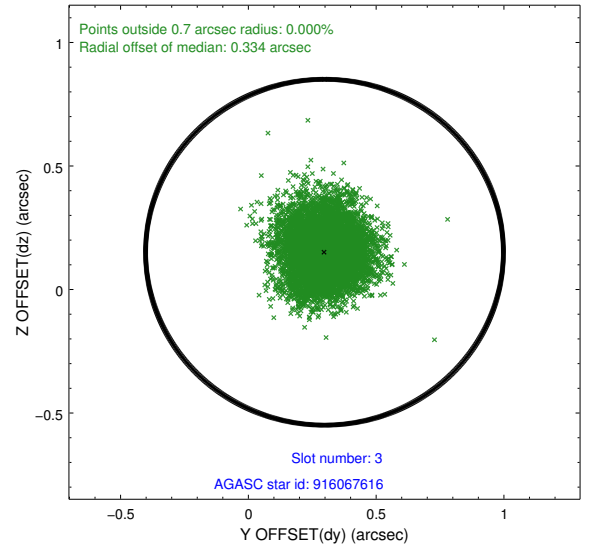
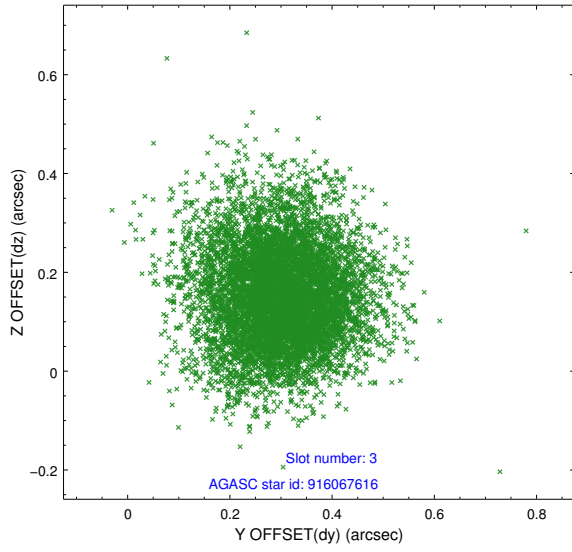


### Slot Statistics

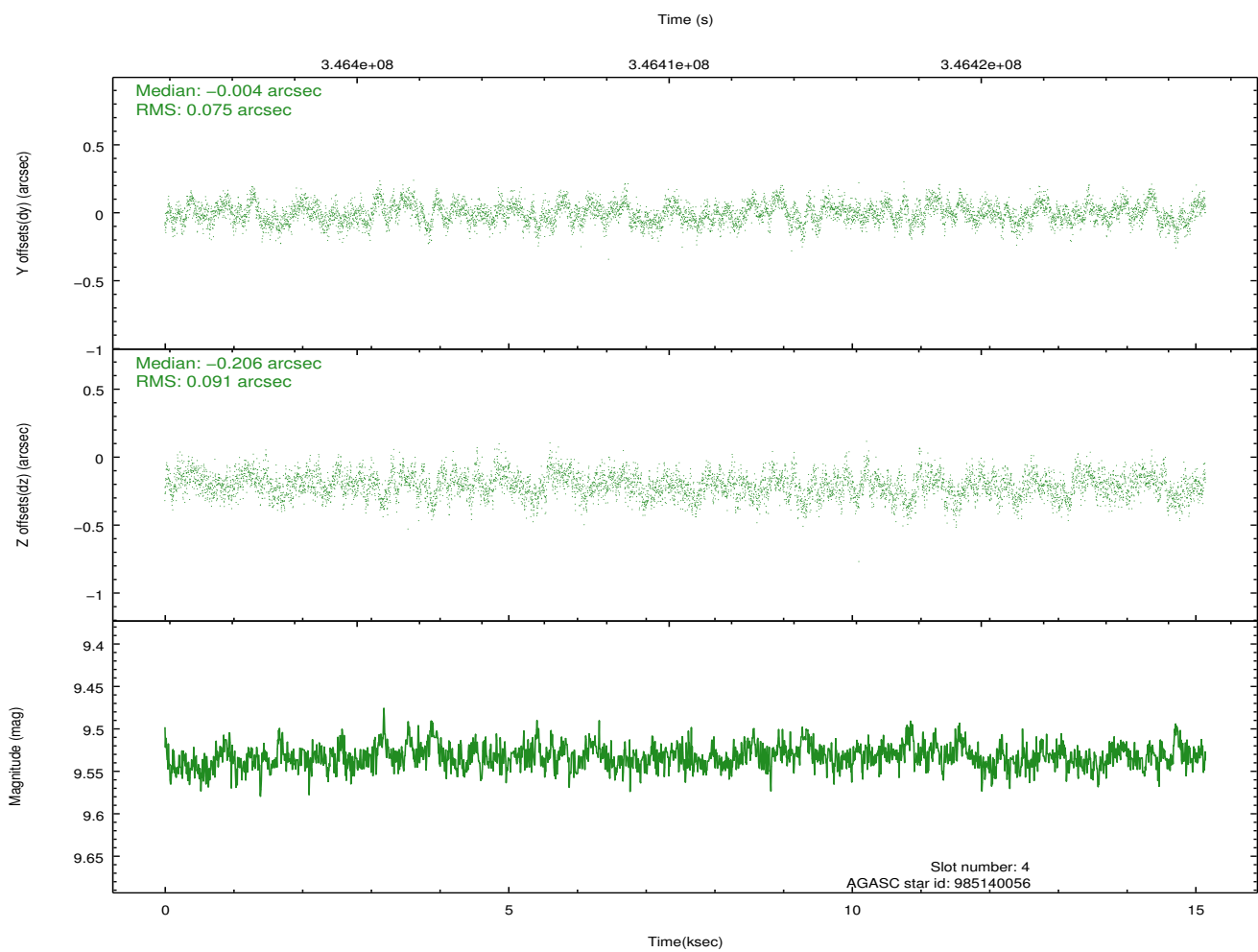
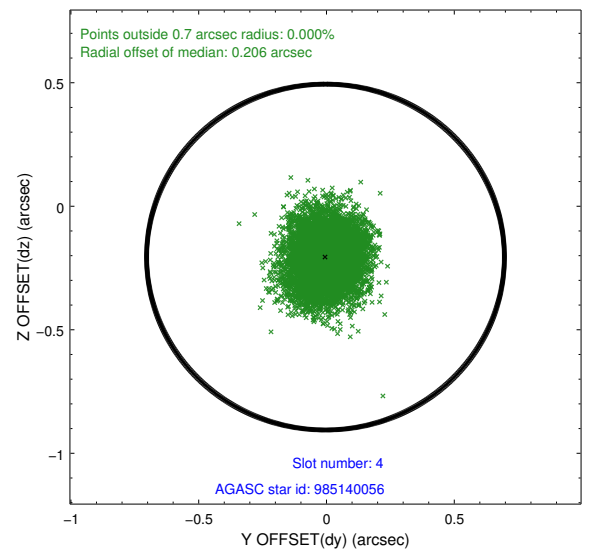
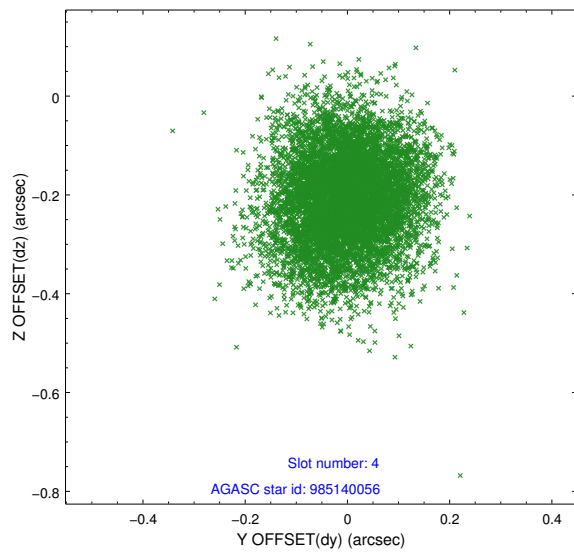
slot	status	id	mag	n_pts	med_dy	med_dz	dr1	dr2	ra	dec	mean_y	mean_z
0	FID	HRC-S-1	7.05	3694	0.094	-0.203	0.020	0.031	0.000000	0.000000	-1168.34	-462.52
1	FID	HRC-S-2	7.03	3693	0.195	-0.113	0.009	0.016	0.000000	0.000000	1231.13	-455.21
2	FID	HRC-S-3	7.04	3694	0.101	0.014	0.025	0.038	0.000000	0.000000	-1170.71	567.09
3	GUIDE	916067616	9.34	7353	0.298	0.151	0.136	0.225	0.517191	-30.685226	1083.72	2102.86
4	GUIDE	985140056	9.53	7384	-0.004	-0.206	0.125	0.203	359.169544	-30.957024	502.33	-2137.20
5	GUIDE	985144184	10.05	7376	-0.074	-0.226	0.163	0.263	359.125461	-30.330052	-1657.74	-1468.70
6	GUIDE	985144448	10.21	7360	0.105	0.036	0.192	0.309	359.393147	-30.386787	-1172.78	-763.08
7	GUIDE	841221944	9.36	7376	-0.330	0.250	0.129	0.213	0.222626	-29.841894	-2078.56	2351.87

## 2.4 Star Slots

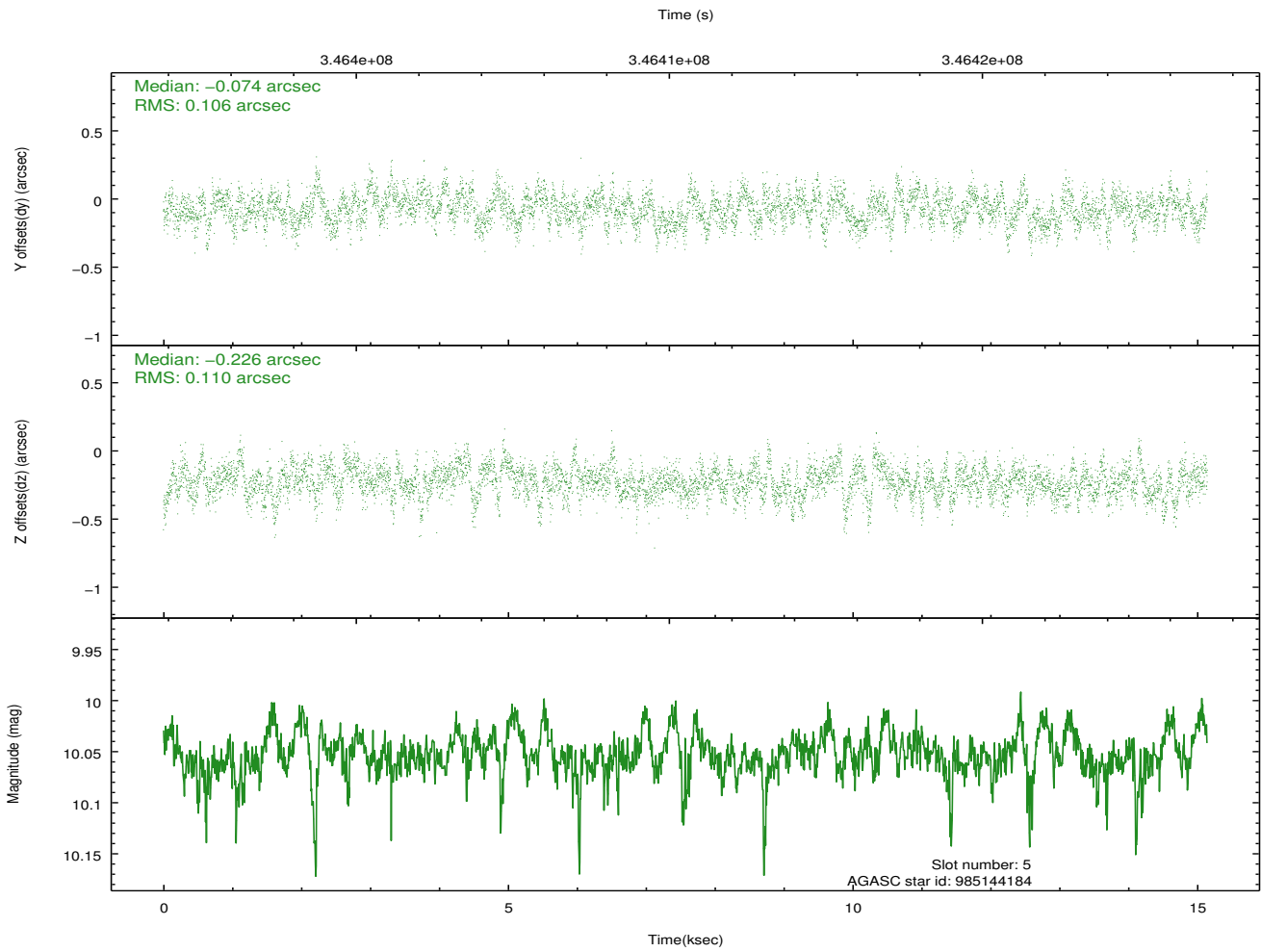
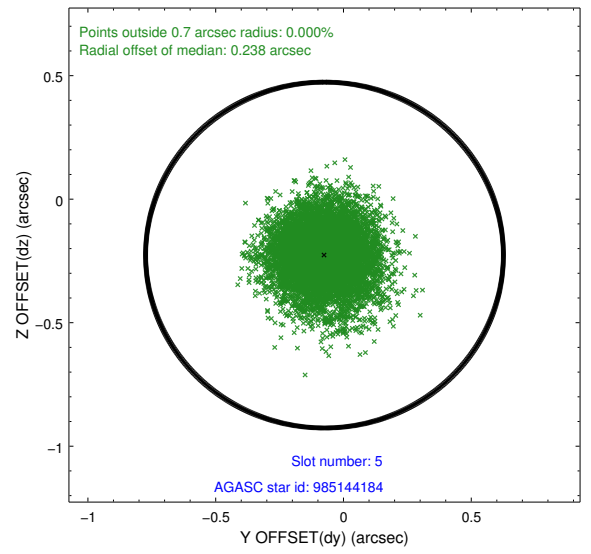
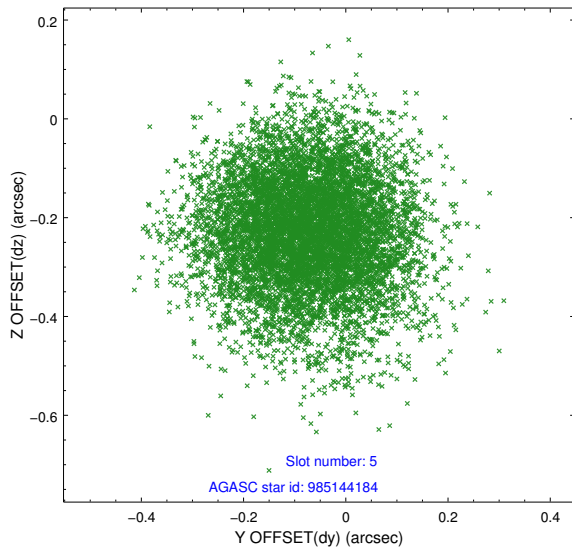
### 2.4.1 Slot 3



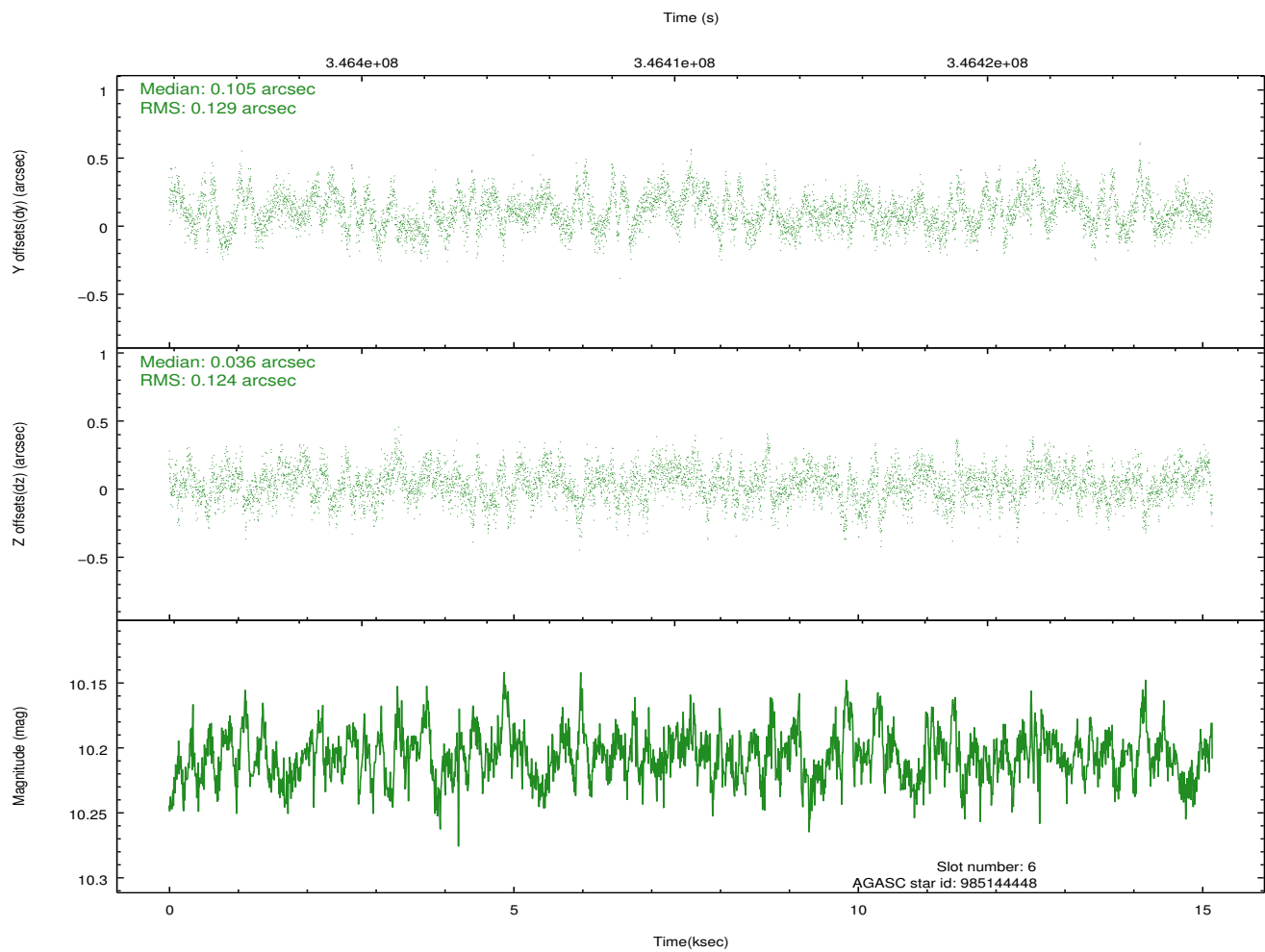
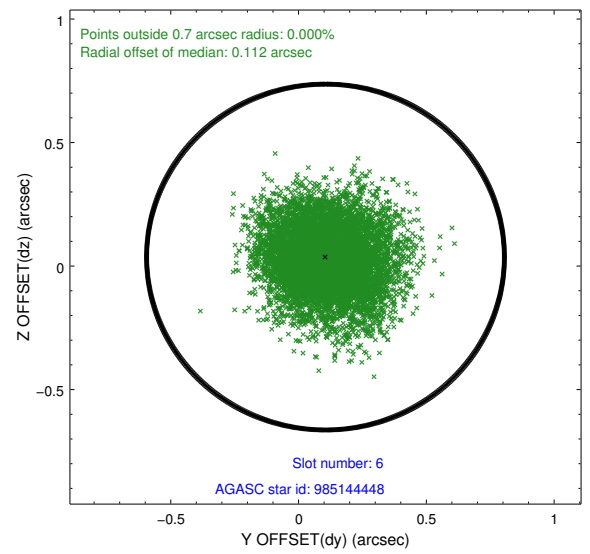
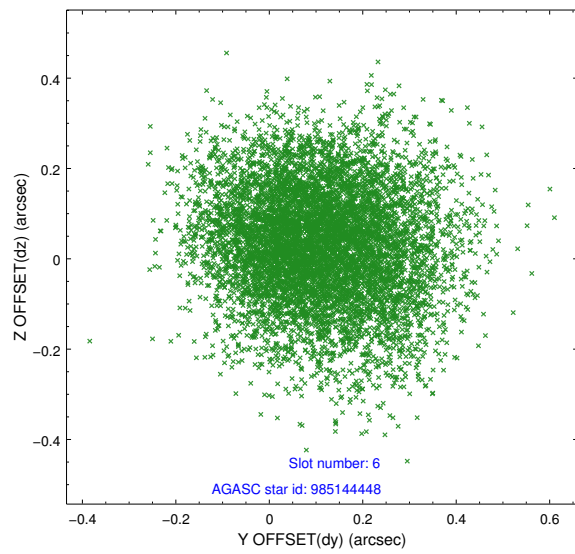
## 2.4.2 Slot 4



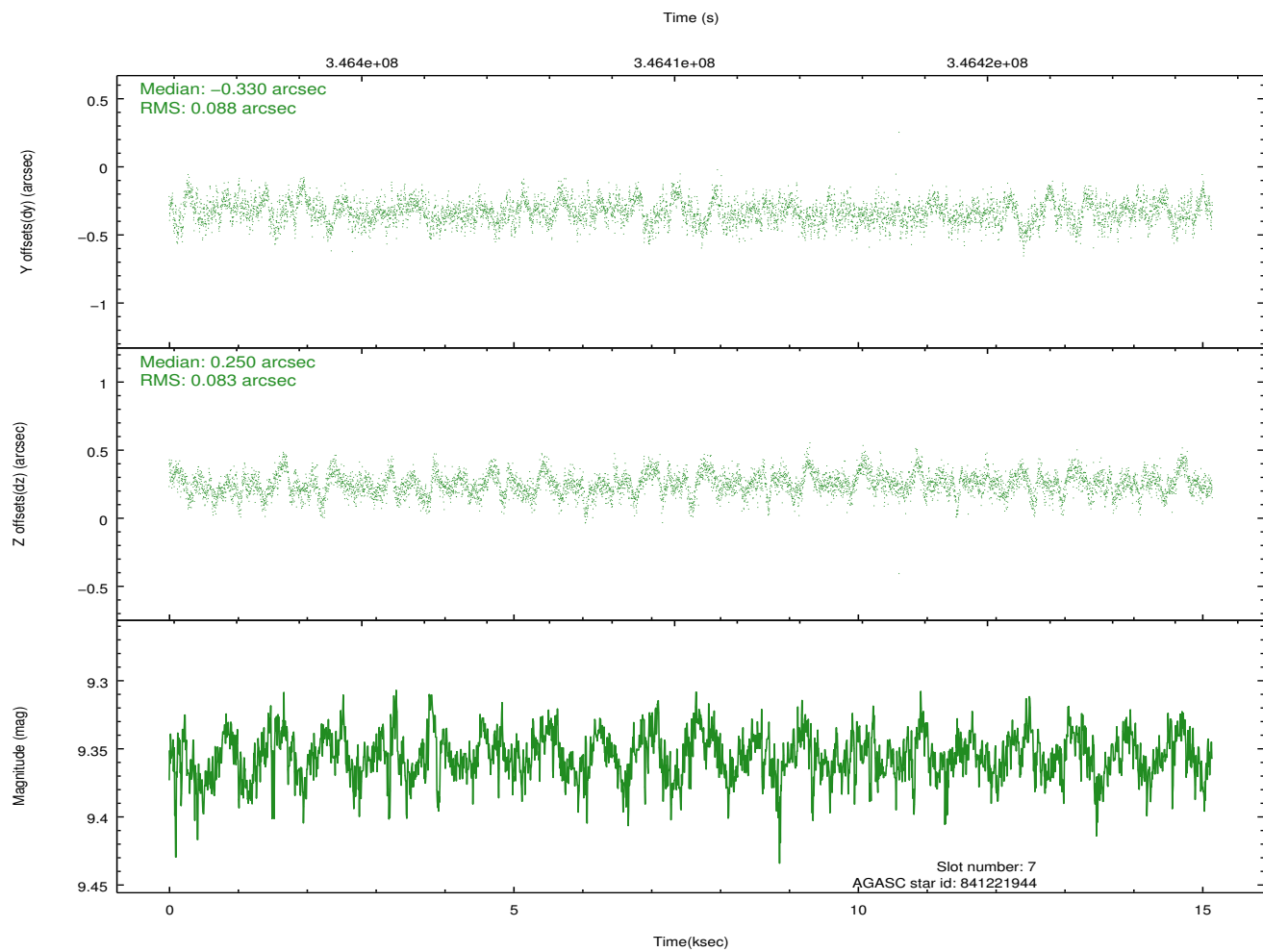
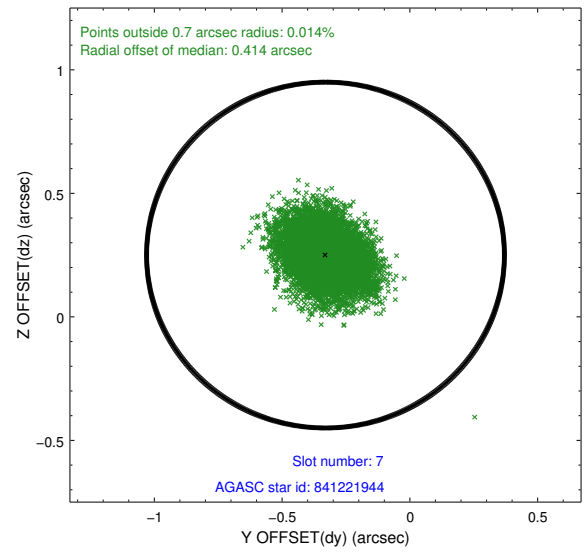
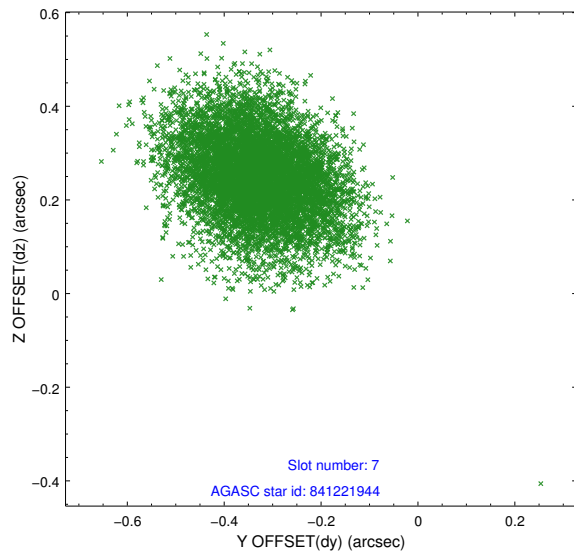
### 2.4.3 Slot 5



## 2.4.4 Slot 6

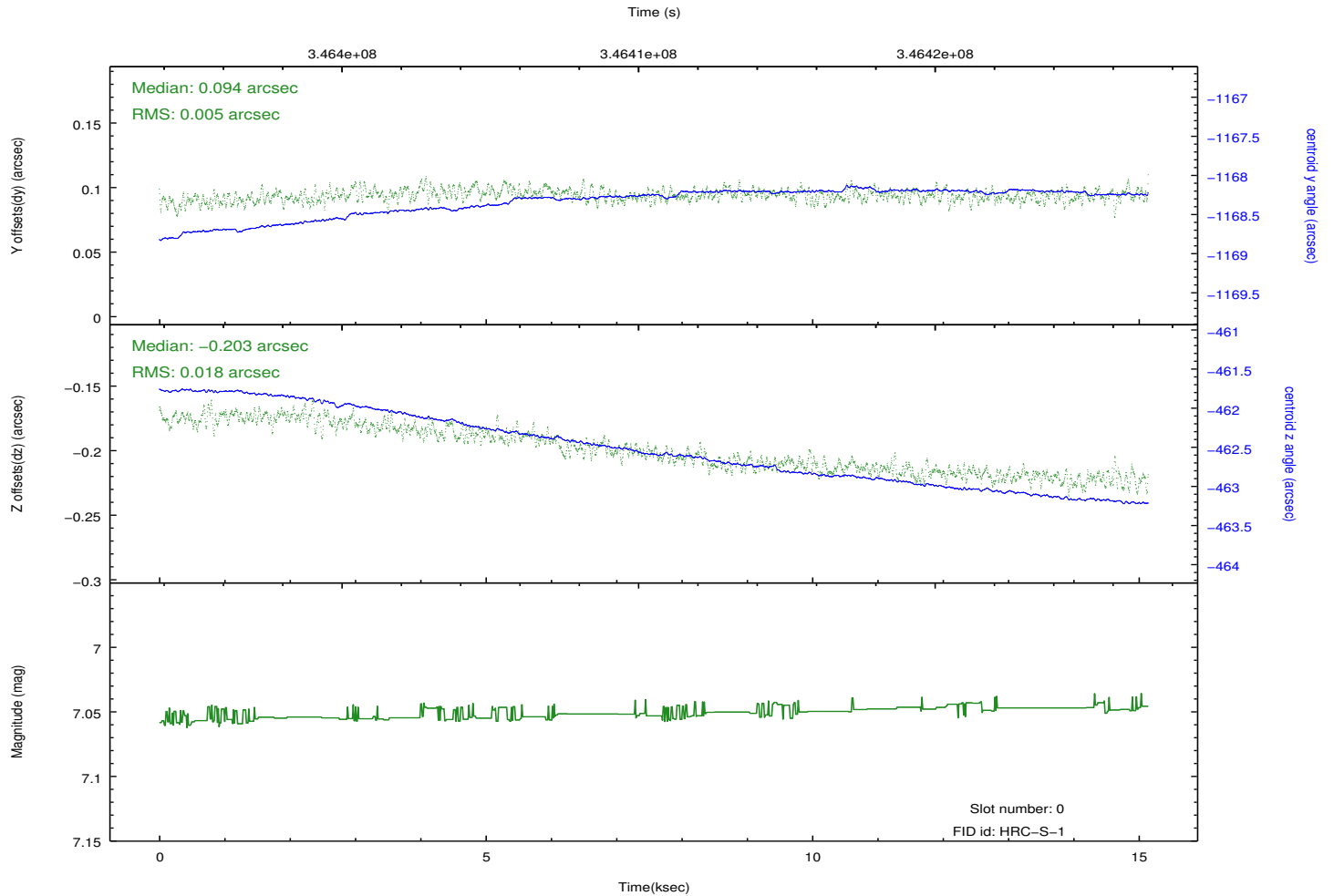
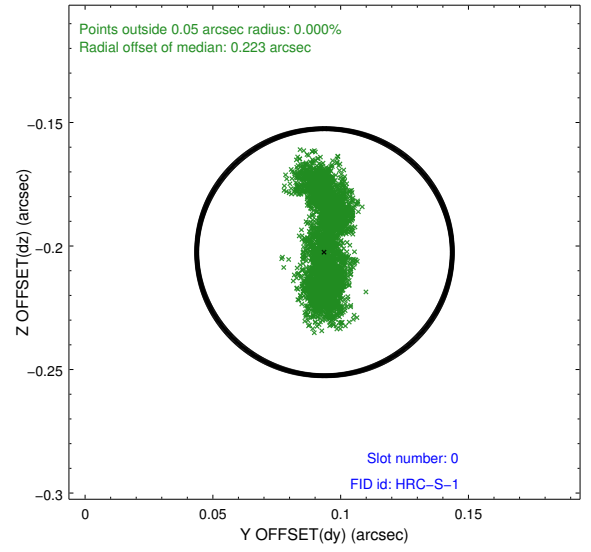
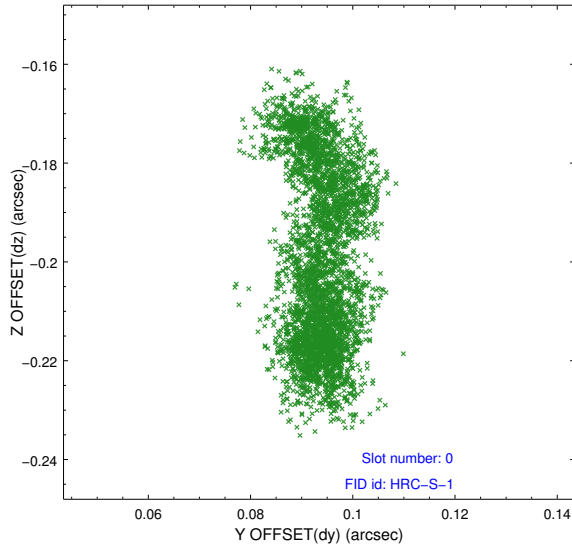


## 2.4.5 Slot 7

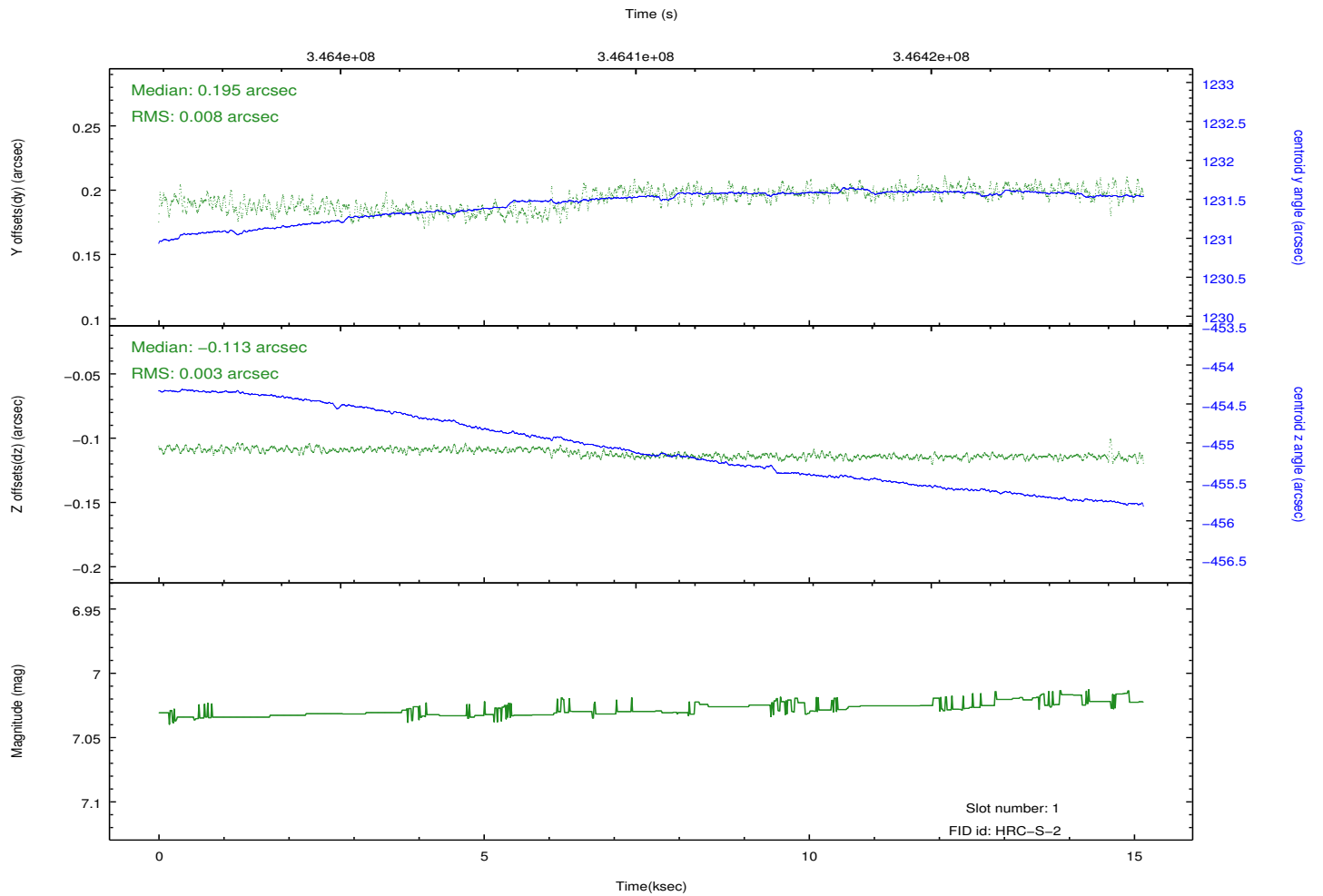
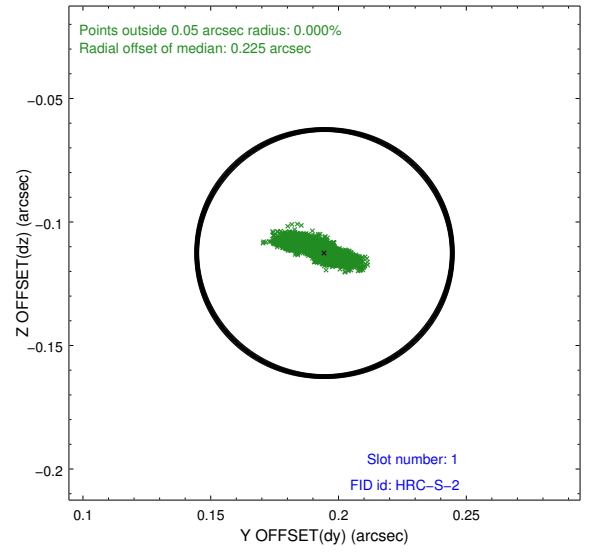
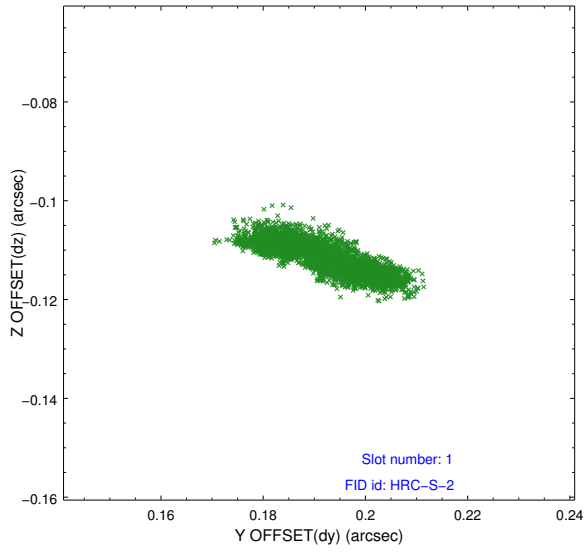


## 2.5 FID Slots

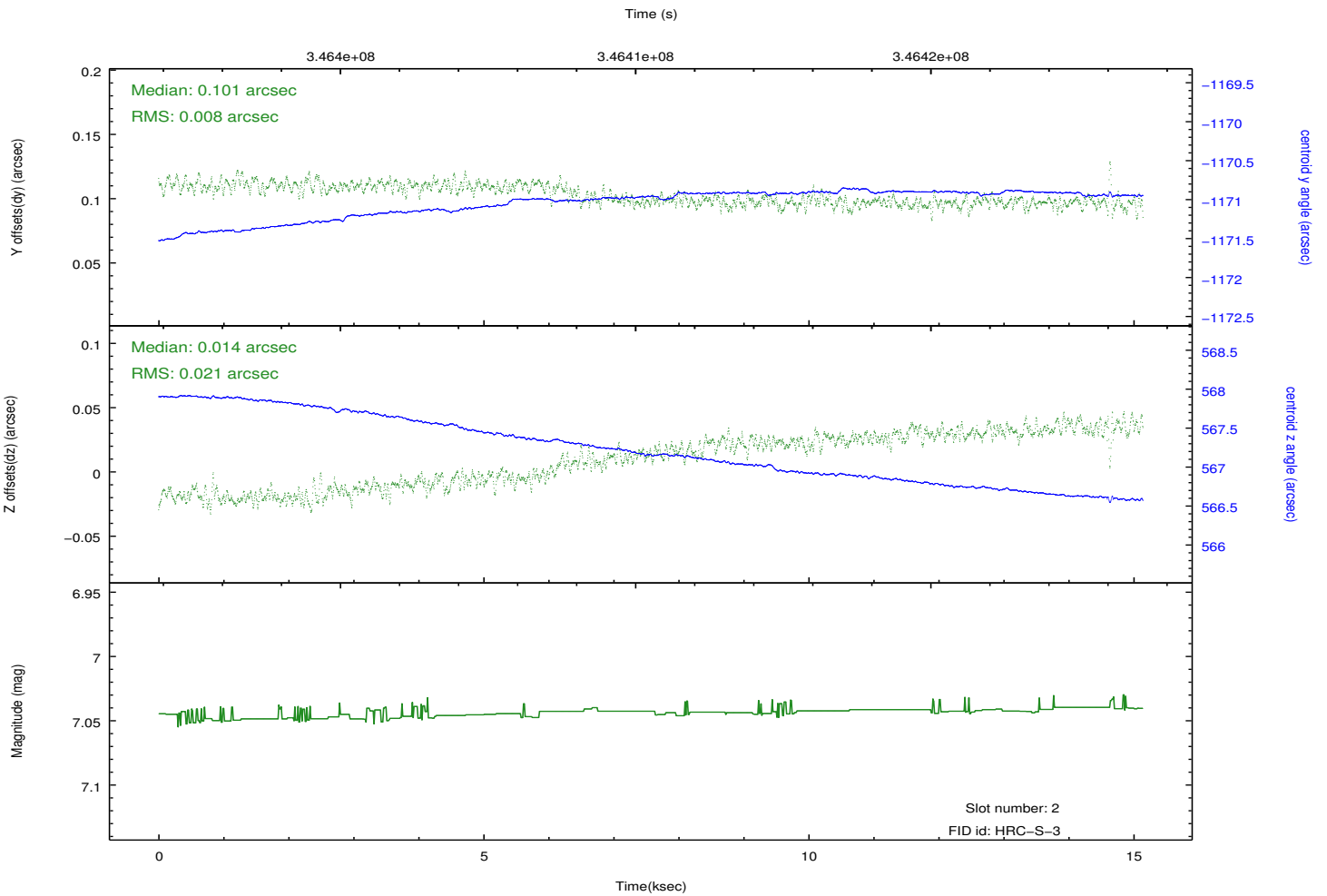
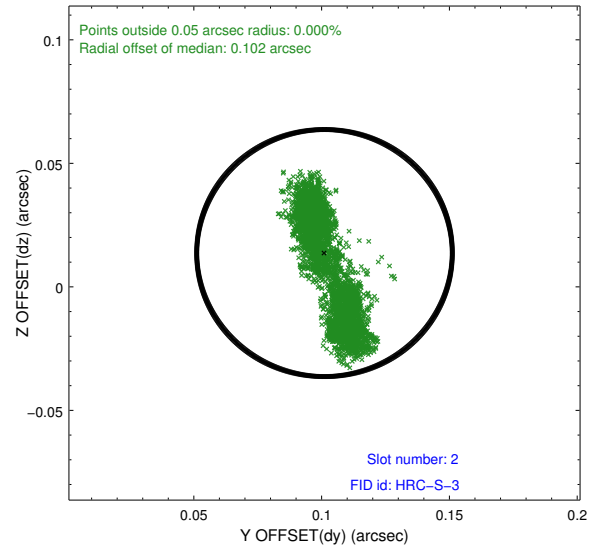
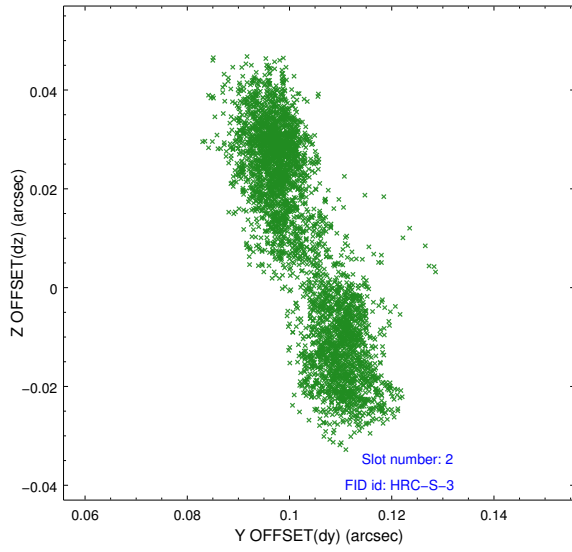
### 2.5.1 Slot 0



## 2.5.2 Slot 1

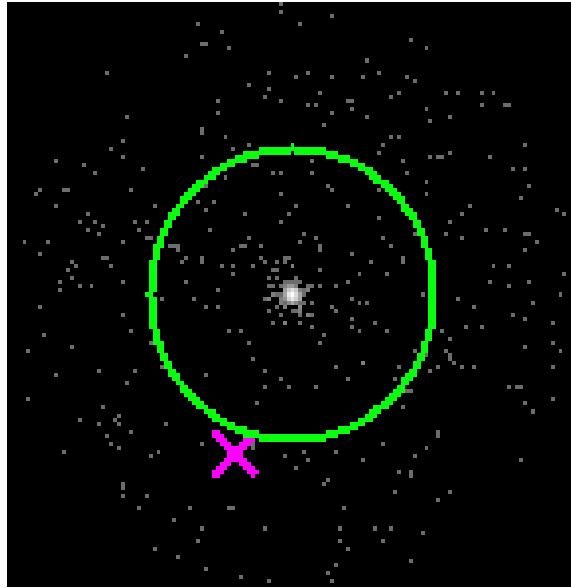


### 2.5.3 Slot 2



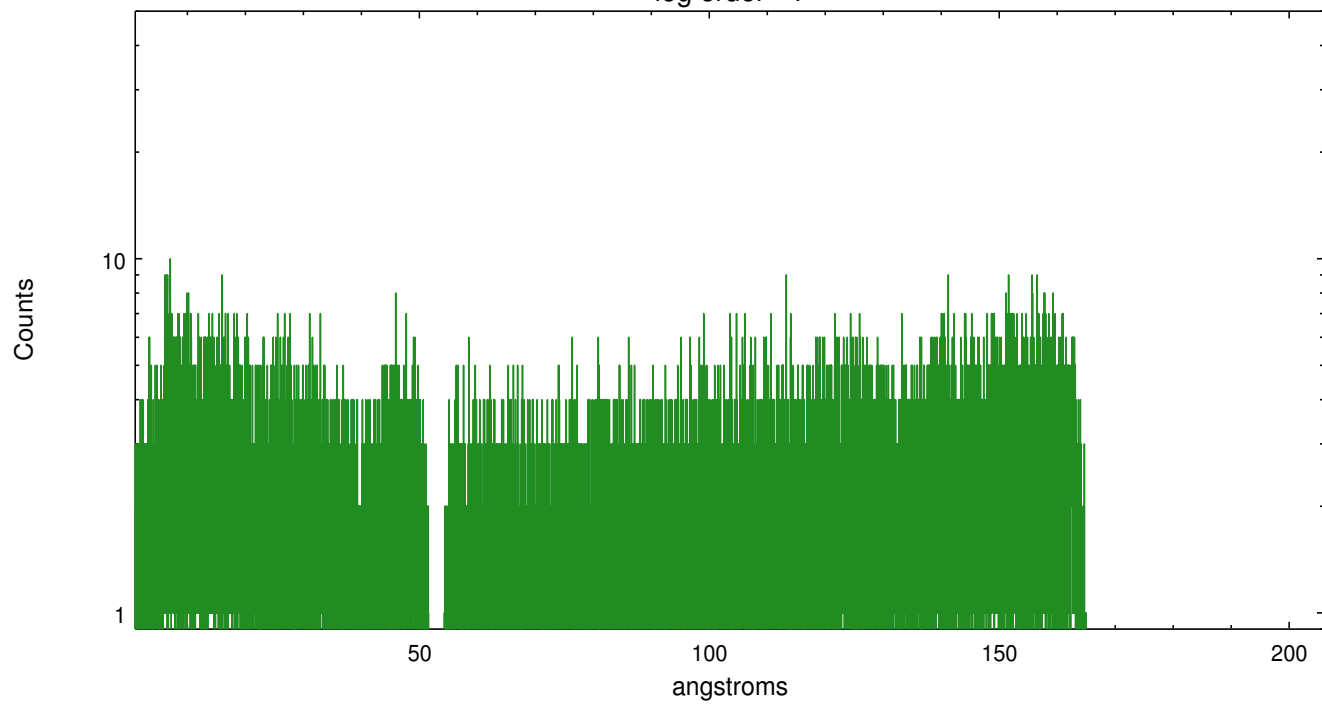
### 3 Gratings

#### 3.1 LETG Arm

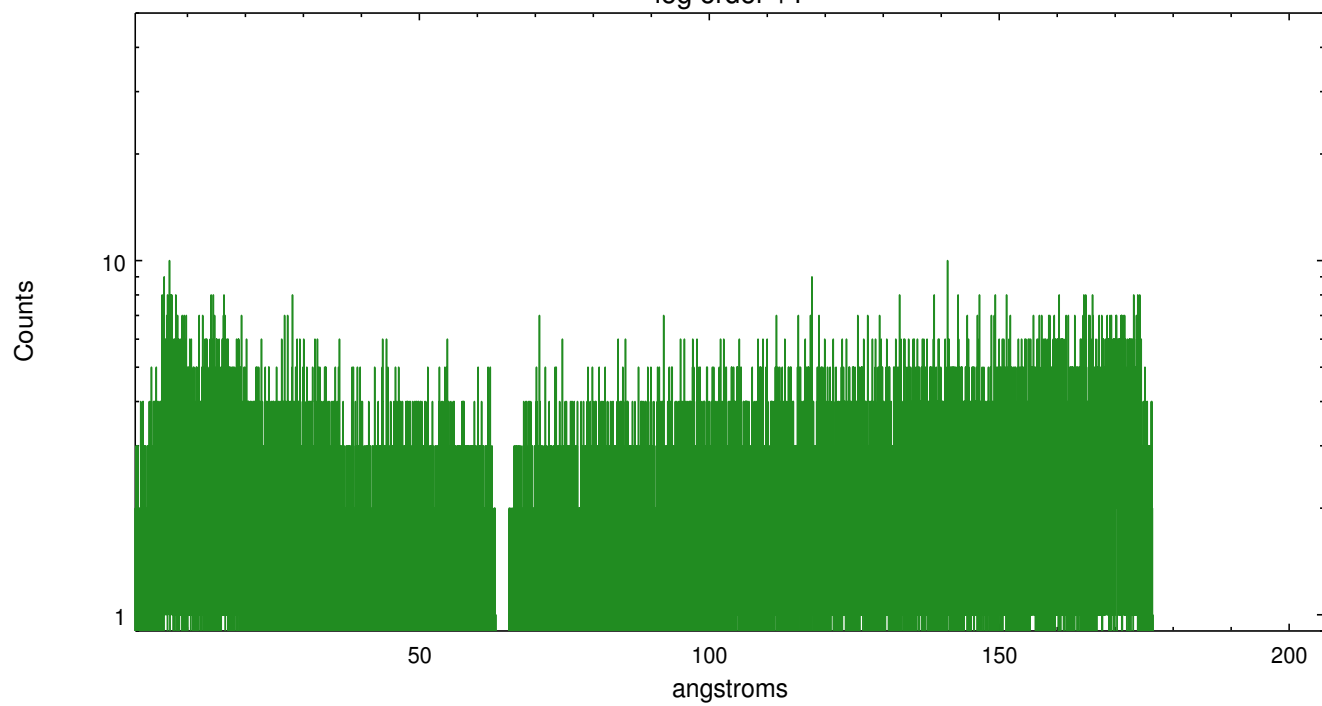


LETG Zero Order

leg order -1



leg order +1



## A Summary

### A.1 Status

V&V Scientist	Joy Nichols
V&V Date (YYYY-MM-DD)	2012.08.22
V&V Edition	1
V&V Disposition and Status	OK
V&V Charge Time	15.144631998837

### A.2 Comments