

V&V Reference Report

L2 ASCDS Version : 8.4.5

Observation 10950 - L2 Version 2
Chandra X-Ray Center

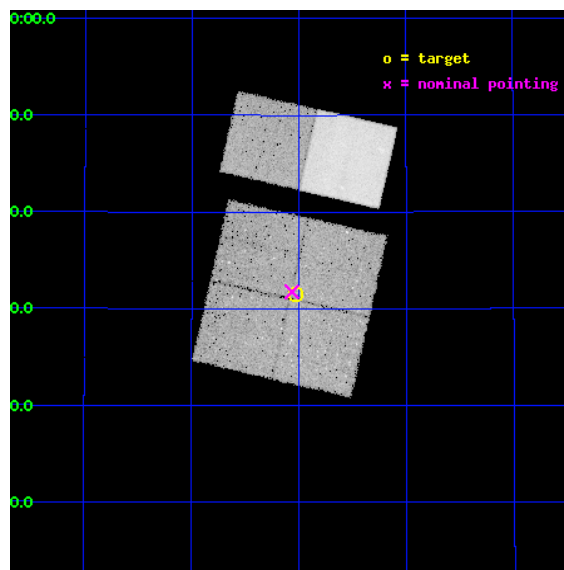
L2 Processing Date : Jun 21 2012

Contents

1	Front	2
2	OBI	3
2.1	OBI	3
2.1.1	Images	3
2.1.2	Bias	3
2.1.3	Parameters	4
2.1.4	Events	4
2.2	Compared Parameters	5
2.3	Aspect	6
2.4	Star Slots	9
2.4.1	Slot 3	9
2.4.2	Slot 4	10
2.4.3	Slot 5	11
2.4.4	Slot 6	12
2.4.5	Slot 7	13
2.5	FID Slots	14
2.5.1	Slot 0	14
2.5.2	Slot 1	15
2.5.3	Slot 2	16
A	Summary	17
A.1	Status	17
A.2	Comments	17

1 Front

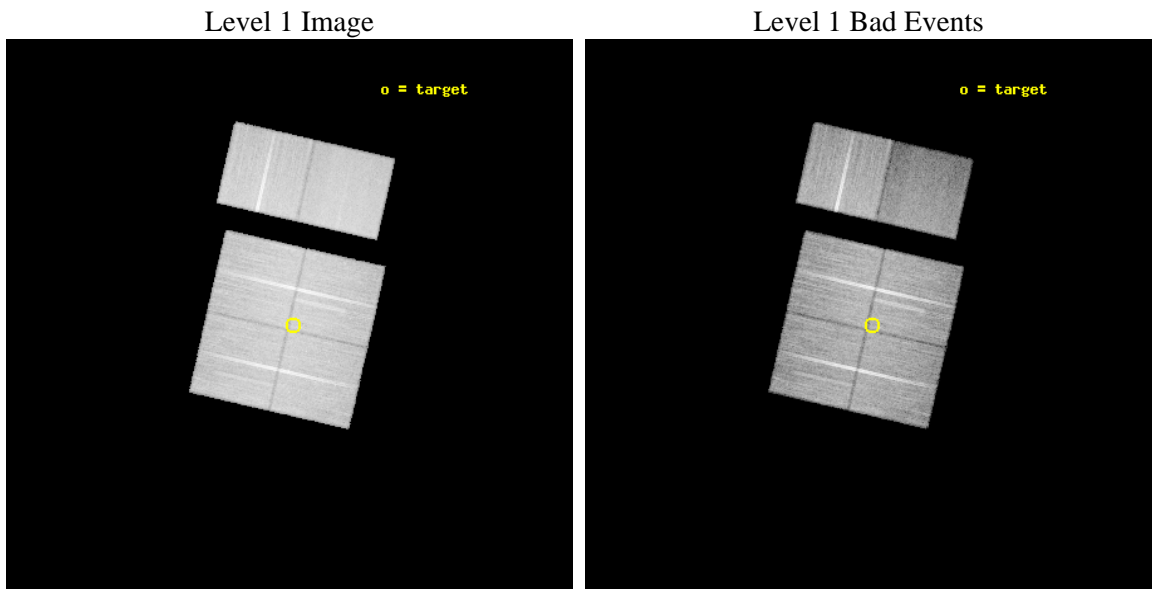
seq_num	200582	Sequence number
obs_id	10950	Observation id
title	The Chandra Cygnus OB2 Survey	Proposal title
observer	Dr. Jeremy Drake	Principal investigator
object	Cygnus OB2	Source name
dtycle	0	
cycle	P	events from which exps? Prim/Second/Both
ra_targ	308.257228	Observer's specified target RA [deg]
dec_targ	41.525357	Observer's specified target Dec [deg]
ra_nom	308.26657094462	Nominal RA [deg]
dec_nom	41.52940317568	Nominal Dec [deg]
roll_nom	12.902492295635	Nominal Roll [deg]
revision	2	Processing version of data
ontime	27809.882783651	Sum of GTIs [s]
livetime	27457.737302744	Livetime [s]
ontime0	27816.241514683	Sum of GTIs [s]
ontime1	27816.282554686	Sum of GTIs [s]
ontime2	27809.841783464	Sum of GTIs [s]
ontime3	27809.882783651	Sum of GTIs [s]
ontime6	27806.723793805	Sum of GTIs [s]
ontime7	27816.405674696	Sum of GTIs [s]
l2events	211946	Number of level 2 events



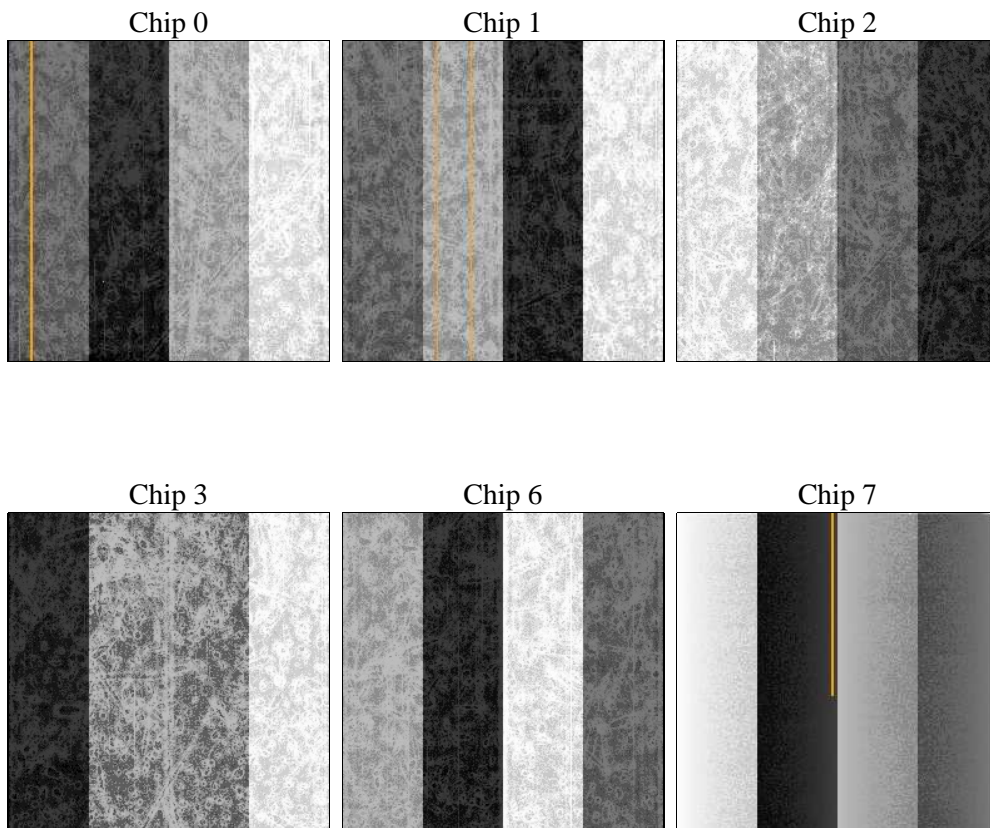
2 OBI

2.1 OBI

2.1.1 Images



2.1.2 Bias



2.1.3 Parameters

obi_num	0	Obi number	sched_exp_time	27769.000000	[s] Scheduled observation exposure time
ascdsver	8.4.5	Processing system revision	ontime	27809.882783651	Sum of GTIs [s]
caldbver	4.4.10	 	ontime0	27816.241514683	Sum of GTIs [s]
date	2012-06-21T01:28:54	Date and time of file creation	ontime1	27816.282554686	Sum of GTIs [s]
revision	2	Processing version of data	ontime2	27809.841783464	Sum of GTIs [s]
			ontime3	27809.882783651	Sum of GTIs [s]
			ontime6	27806.723793805	Sum of GTIs [s]
			ontime7	27816.405674696	Sum of GTIs [s]
			l1events	1307694	Number of level 1 events

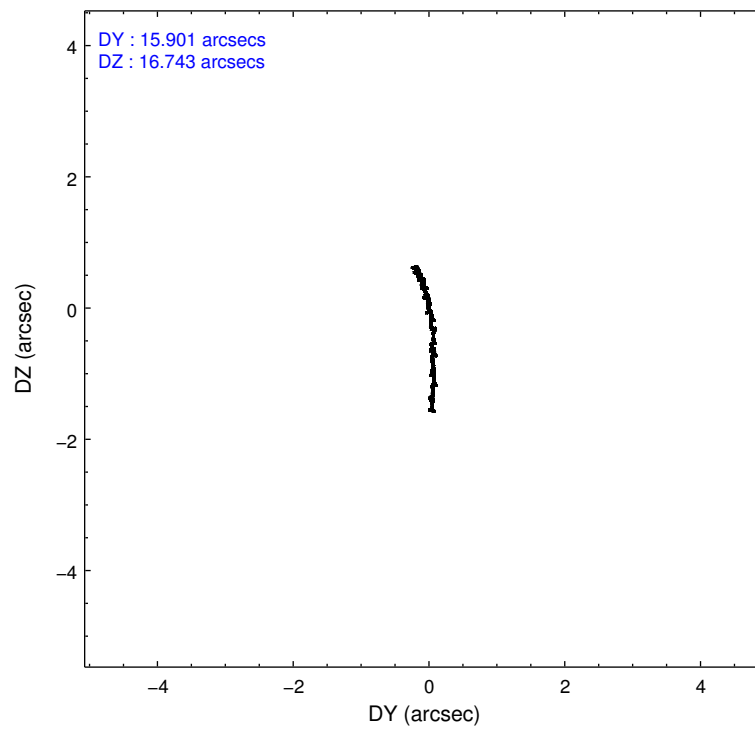
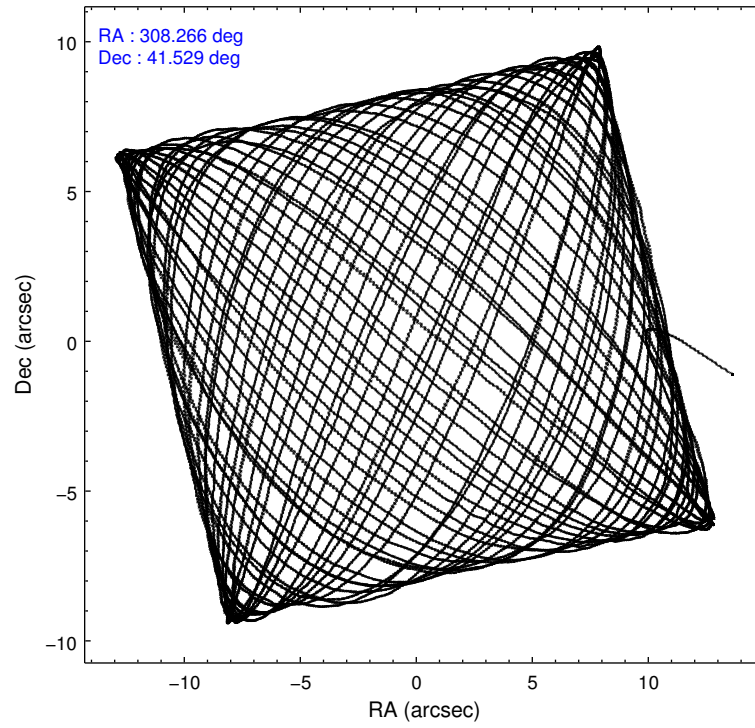
2.1.4 Events

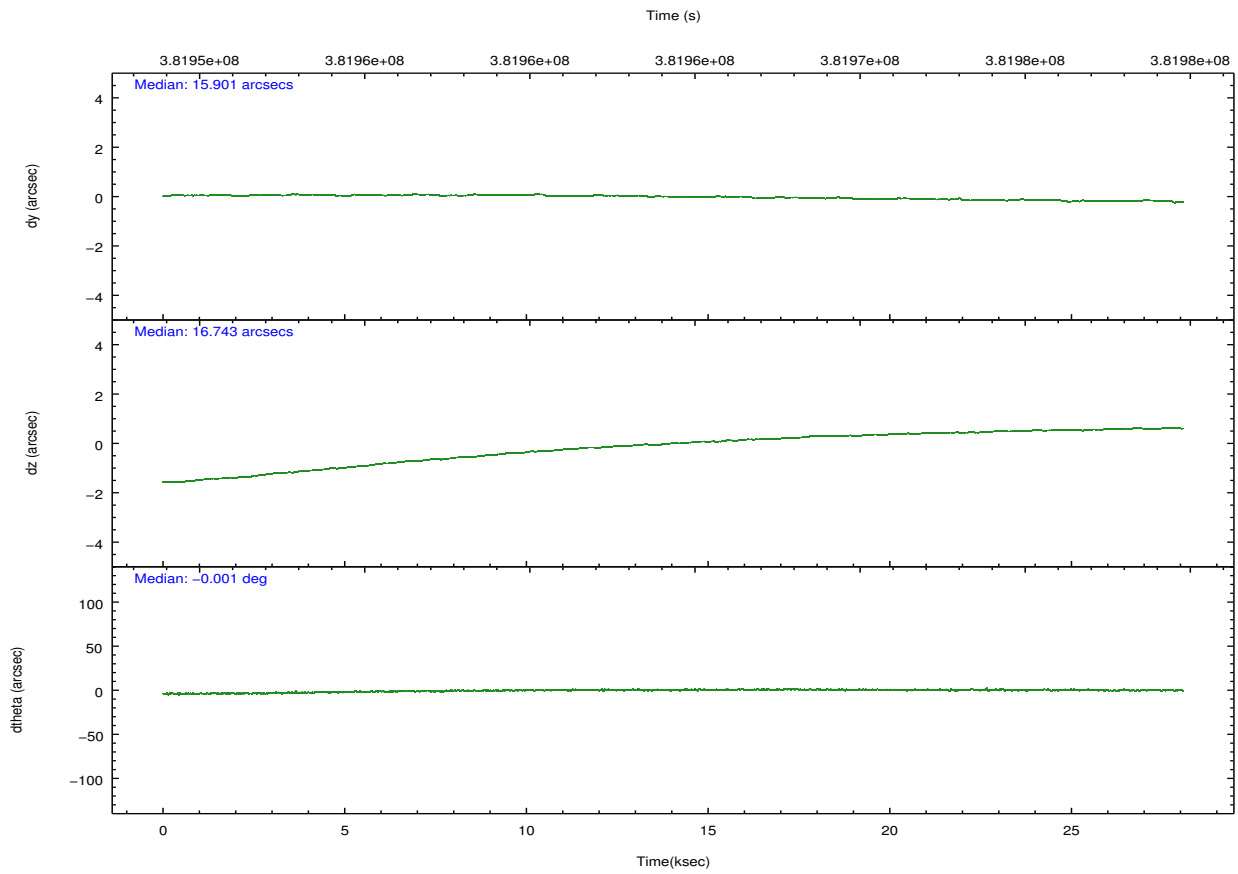
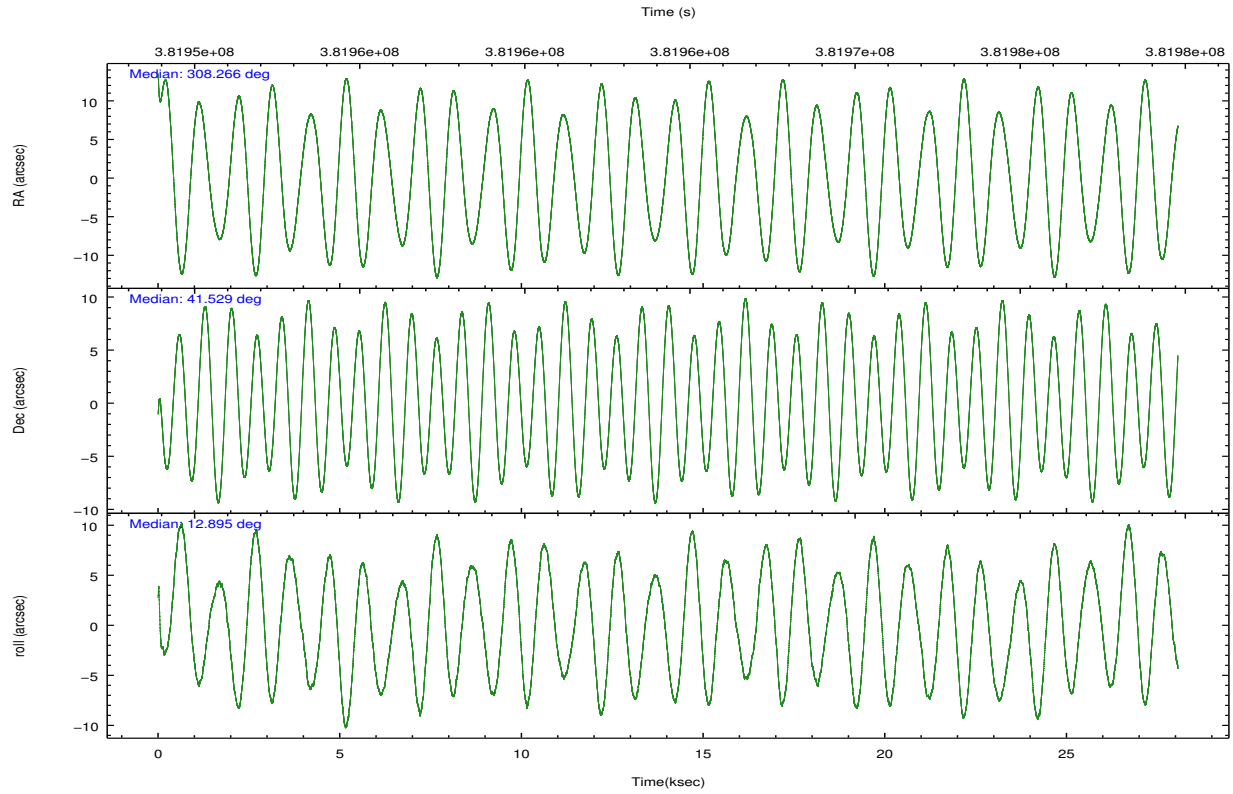
	ccd 0	ccd 1	ccd 2	ccd 3	ccd 6	ccd 7		ccd 0	ccd 1	ccd 2	ccd 3	ccd 6	ccd 7
level 1 events	206385	208220	227509	220378	225966	219236	grade 0 events	10892	12795	9623	10100	9314	11399
rejected events	180346	178841	203931	196560	201633	110399		5%	6%	4%	4%	4%	5%
rejected %	87%	85%	89%	89%	89%	50%	grade 1 events	132	129	134	159	113	342
								0%	0%	0%	0%	0%	0%
							grade 2 events	6048	6050	5478	4946	5493	23551
								2%	2%	2%	2%	2%	10%
							grade 3 events	2518	2855	2299	2430	2398	10131
								1%	1%	1%	1%	1%	4%
							grade 4 events	2430	2723	2336	2311	2379	9860
								1%	1%	1%	1%	1%	4%
							grade 5 events	6882	7418	6418	7766	8069	23377
								3%	3%	2%	3%	3%	10%
							grade 6 events	4154	4959	3844	4036	4753	53907
								2%	2%	1%	1%	2%	24%
							grade 7 events	173329	171291	197377	188630	193447	86669
								83%	82%	86%	85%	85%	39%

2.2 Compared Parameters

Parameter	Planned	Actual	Parameter	Planned	Actual
Instrument	ACIS	ACIS	Obspar format version number	7	7
Detector	ACIS-012367	ACIS-012367	Obspar file type	PREDICTED	ACTUAL
Grating	NONE	NONE	Obspar update status	NONE	UPDATED
Data mode	VFAINT	VFAINT	CCD I0 on	Y	Y
Observation mode	POINTING	POINTING	CCD I1 on	Y	Y
[deg] Pointing RA	308.239763	308.2665709446175	CCD I2 on	Y	Y
[deg] Pointing Dec	41.510617	41.52940317568046	CCD I3 on	Y	Y
[deg] Pointing Roll	12.711568	12.90249229563451	CCD S0 on	N	N
[mm] SIM focus pos	-0.782348	-0.7809083437167272	CCD S1 on	N	N
[mm] SIM defocus	0	0.001439871863259334	CCD S2 on	O2	Y
[mm] SIM translation stage pos	-233.592463	-233.5874344608287	CCD S3 on	O1	Y
[mm] SIM translation stage offset	0	-0.005018542100998502	CCD S4 on	N	N
[s] Observation start time (MET)	381950602.184000	381949538.55162	CCD S5 on	N	N
Observation start date	2010-02-07T17:22:16	2010-02-07T17:05:38	Number of optional ACIS chips dropped	0	0
[s] Observation end time (MET)	381978371.184000	381979622.81564	On-chip summing requested	N	N
Observation end date	2010-02-08T01:05:05	2010-02-08T01:27:02	Subarray requested	NONE	NONE
Read mode	TIMED	TIMED	Alternating exposures requested	N	N
			[s] Primary exposure time	0.000000	3.2

2.3 Aspect



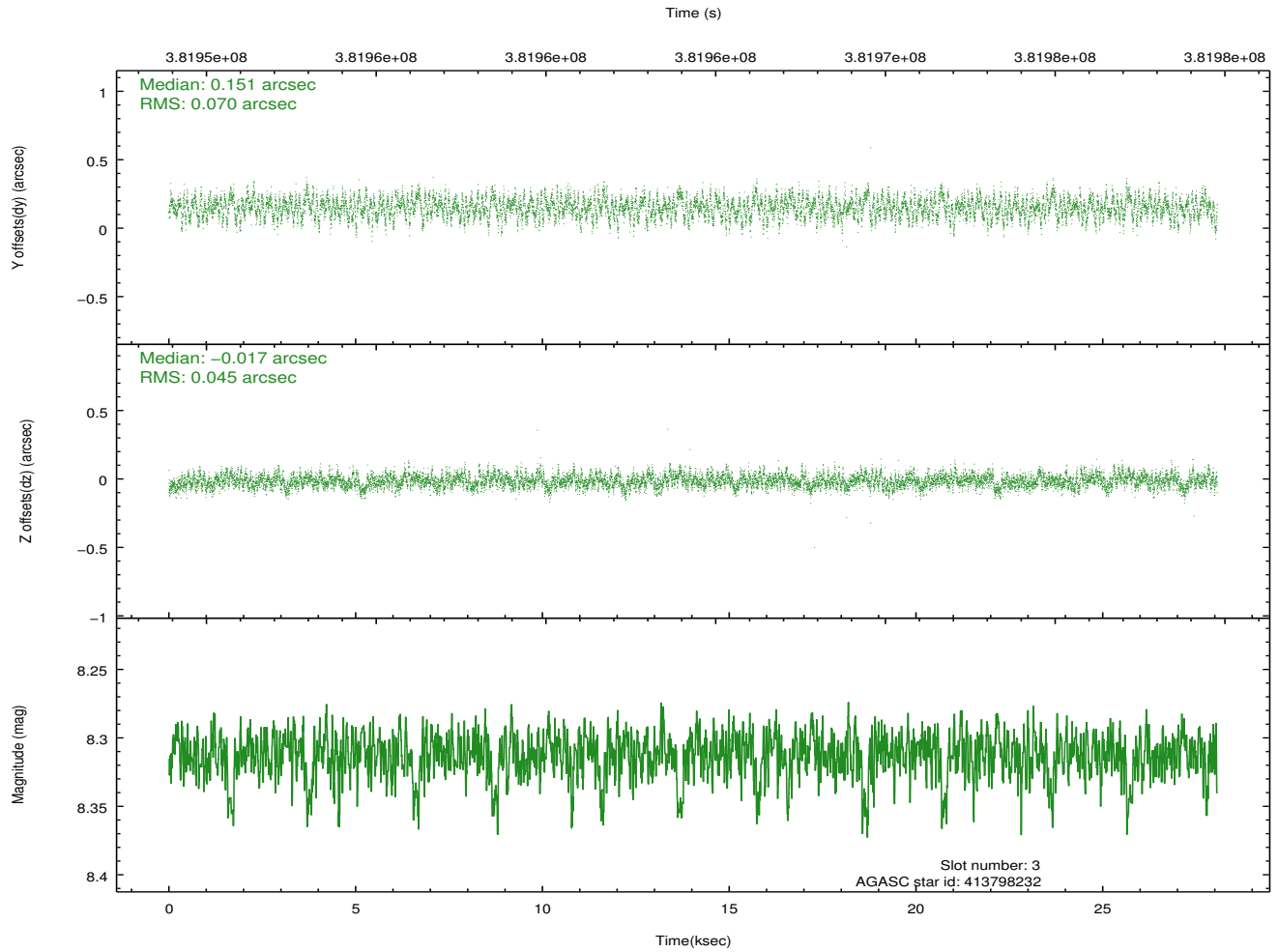
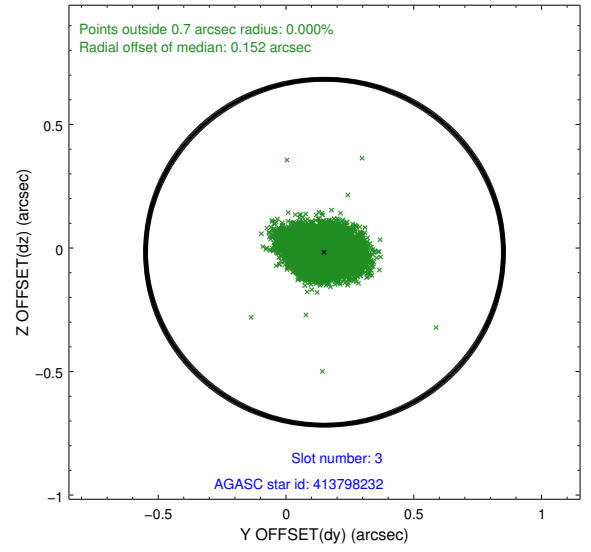
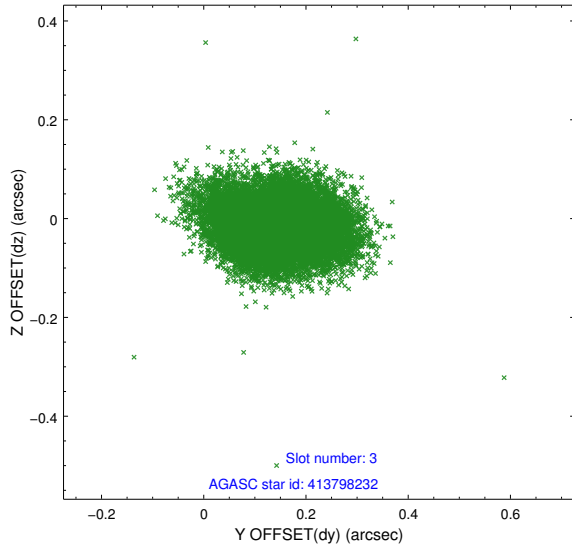


Slot Statistics

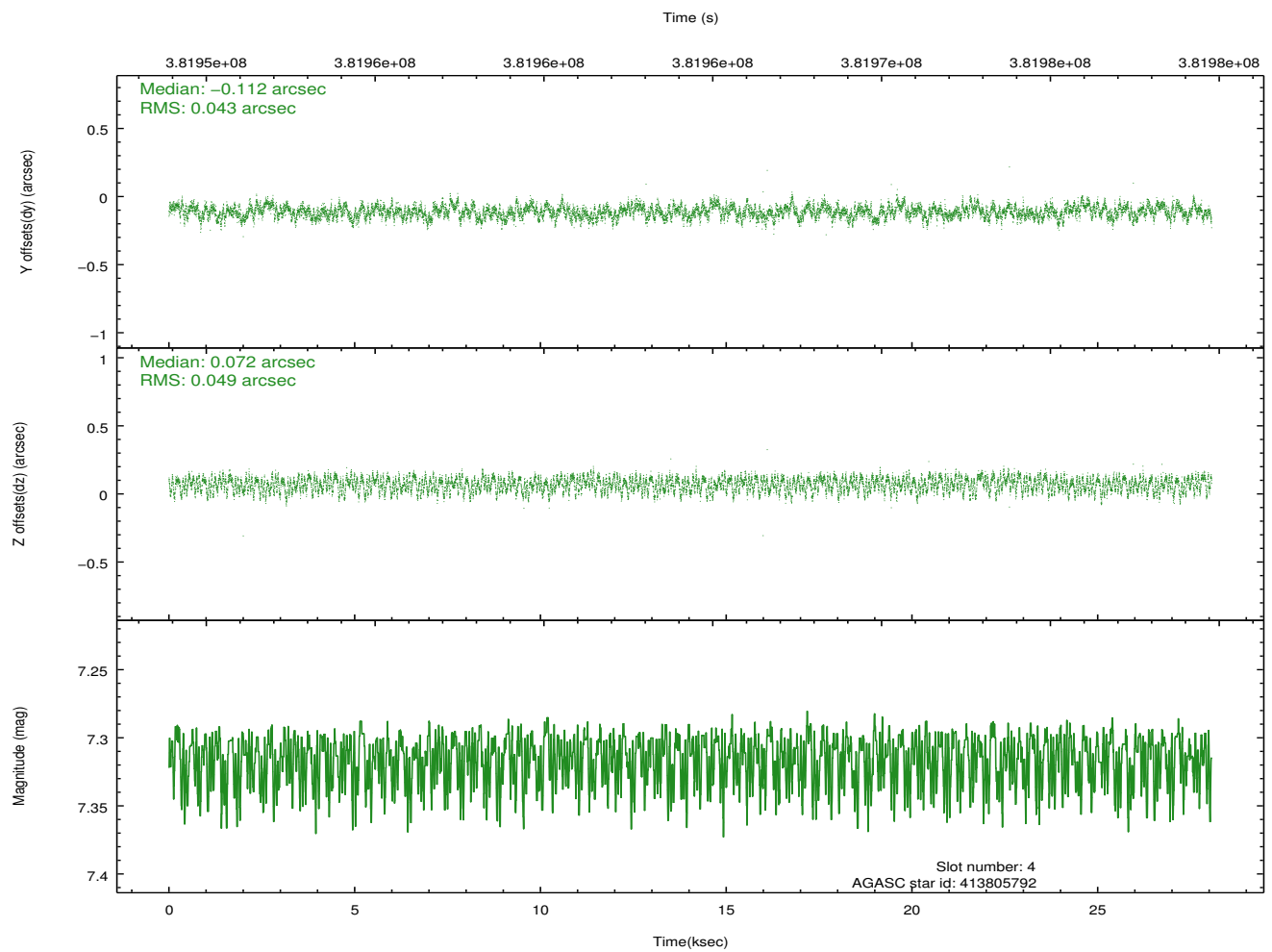
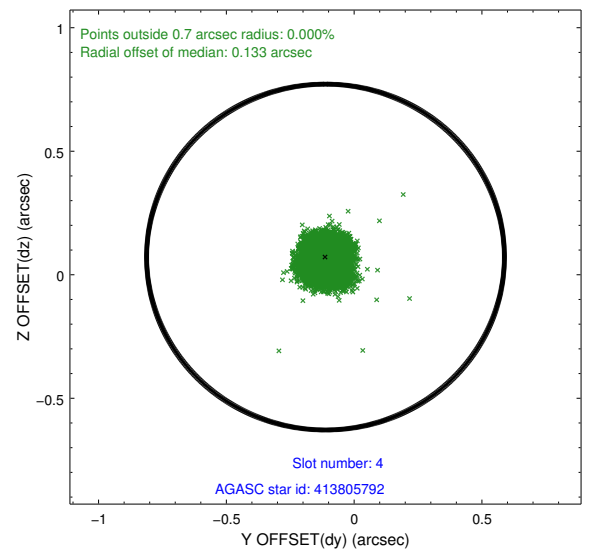
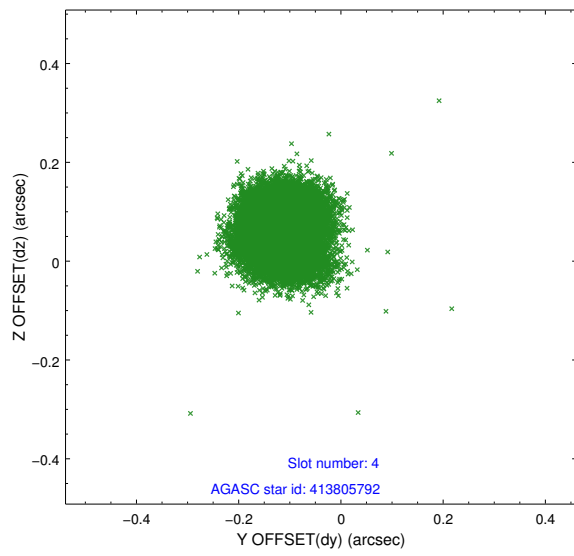
slot	status	id	mag	n_pts	med_dy	med_dz	dr1	dr2	ra	dec	mean_y	mean_z
0	FID	ACIS-I-1	7.02	6844	0.061	-0.032	0.014	0.034	0.000000	0.000000	923.61	-840.24
1	FID	ACIS-I-5	7.02	6846	-0.213	0.063	0.011	0.030	0.000000	0.000000	-1824.70	1057.32
2	FID	ACIS-I-6	7.03	6845	0.062	0.046	0.019	0.027	0.000000	0.000000	389.09	1701.89
3	GUIDE	413798232	8.31	13686	0.151	-0.017	0.088	0.144	309.116117	41.044272	1954.90	-2149.44
4	GUIDE	413805792	7.31	13690	-0.112	0.072	0.070	0.109	307.778748	40.858024	-1740.08	-2012.09
5	GUIDE	414324952	9.03	13676	-0.023	-0.134	0.104	0.165	307.998954	42.060645	-192.13	2073.94
6	GUIDE	414324712	9.34	13673	0.044	0.082	0.110	0.173	307.938856	41.820690	-541.45	1268.26
7	GUIDE	414324232	8.31	13673	-0.058	0.000	0.071	0.114	308.637806	41.996627	1424.30	1475.23

2.4 Star Slots

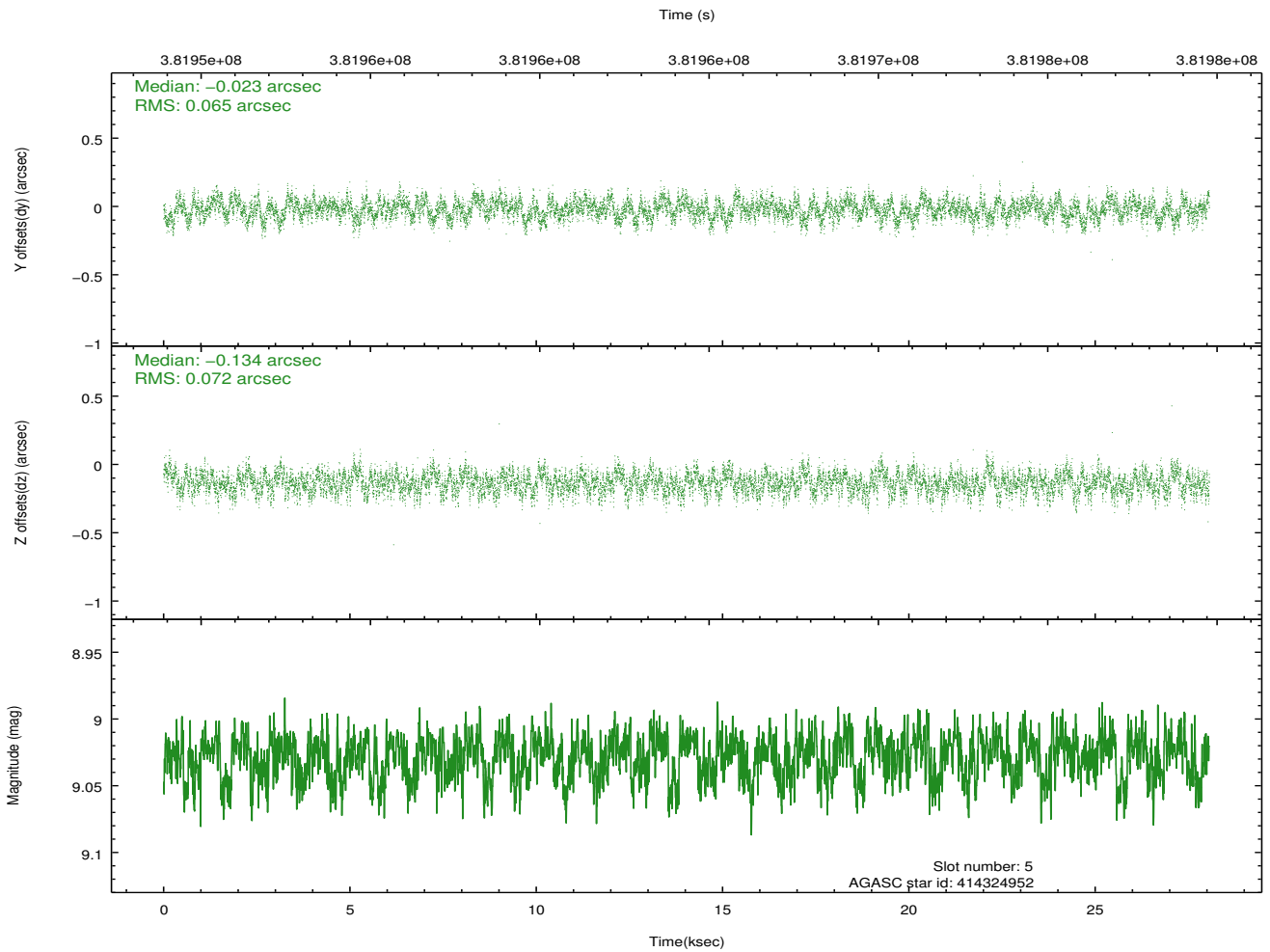
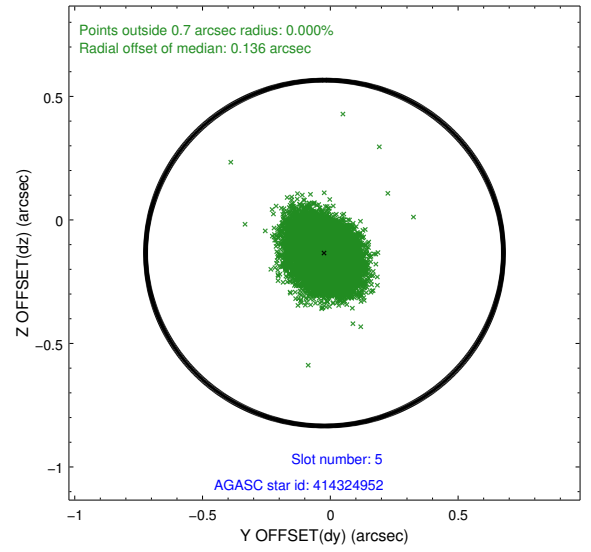
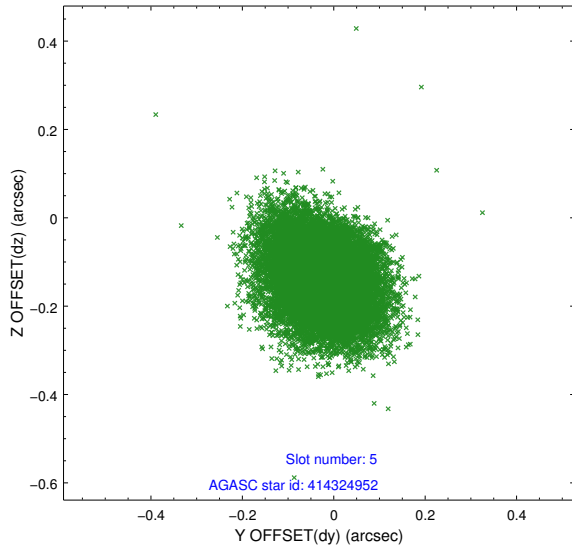
2.4.1 Slot 3



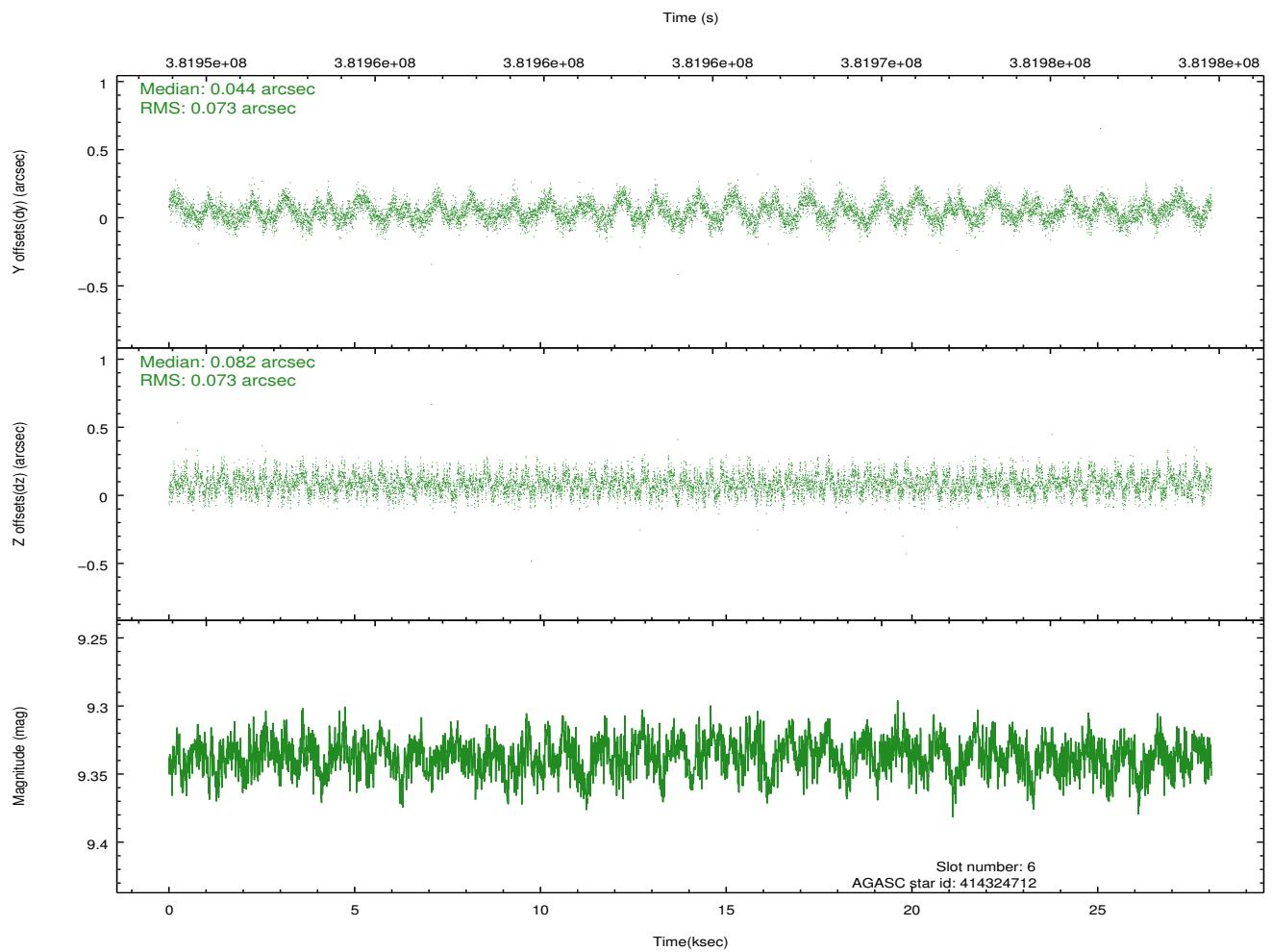
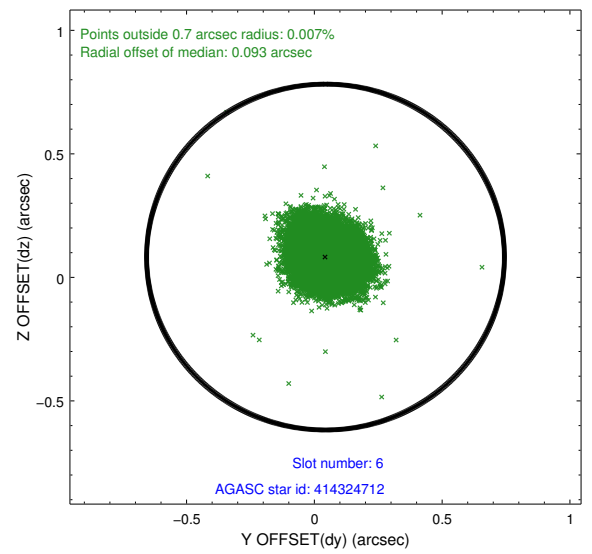
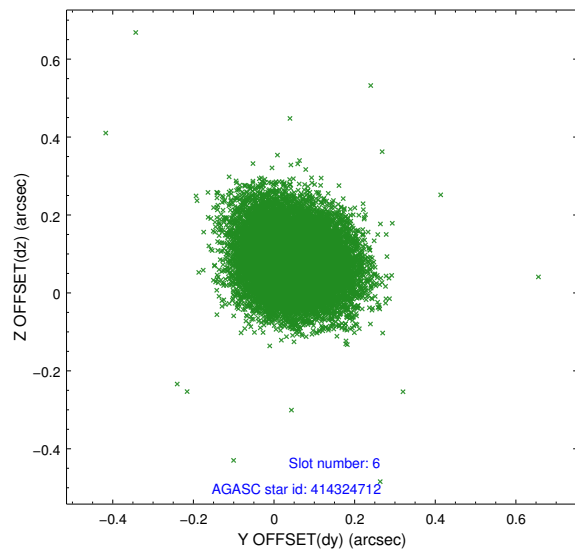
2.4.2 Slot 4



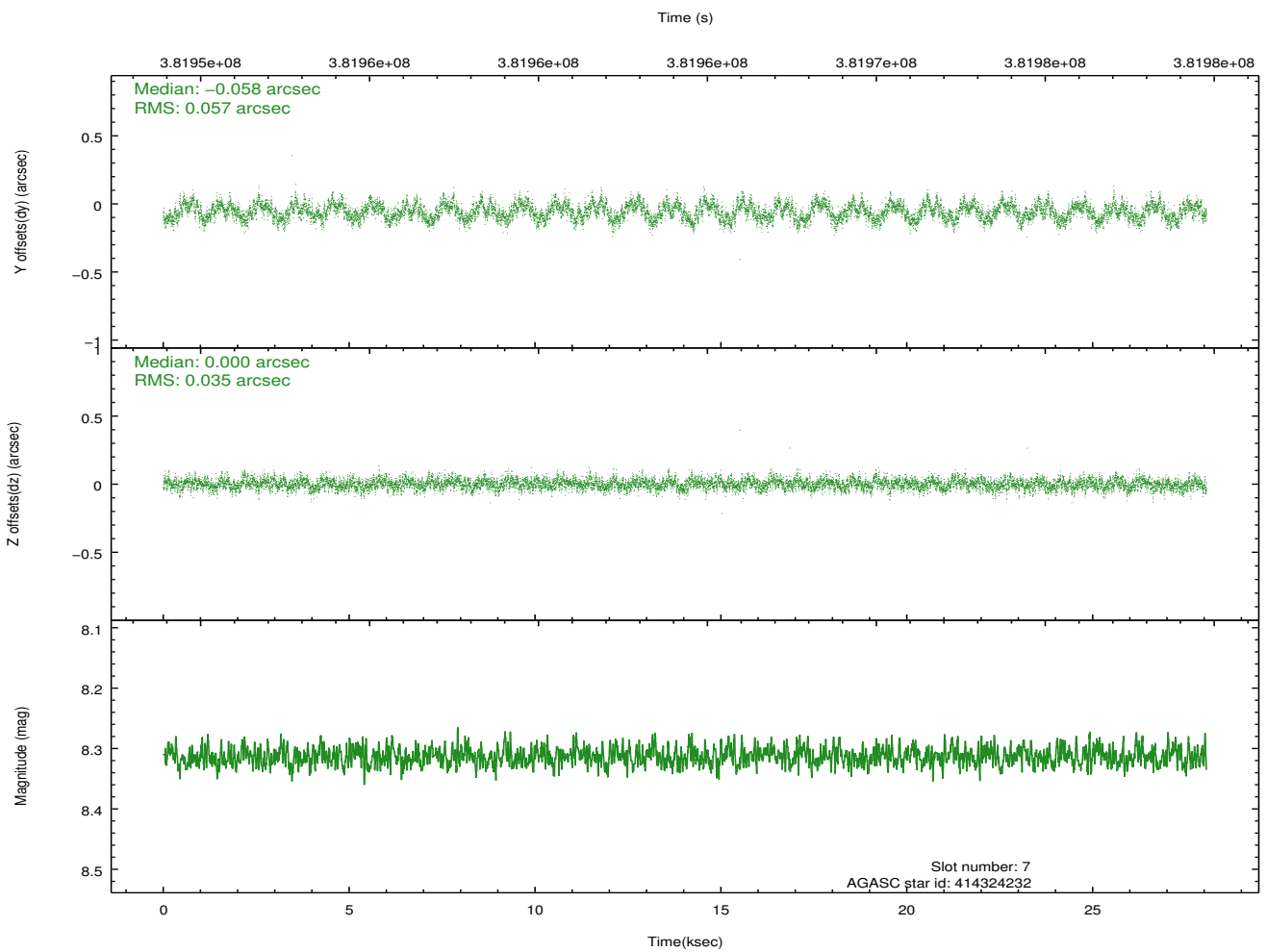
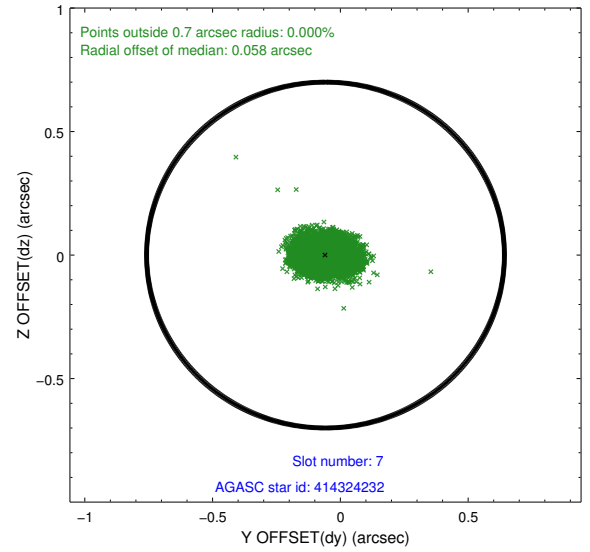
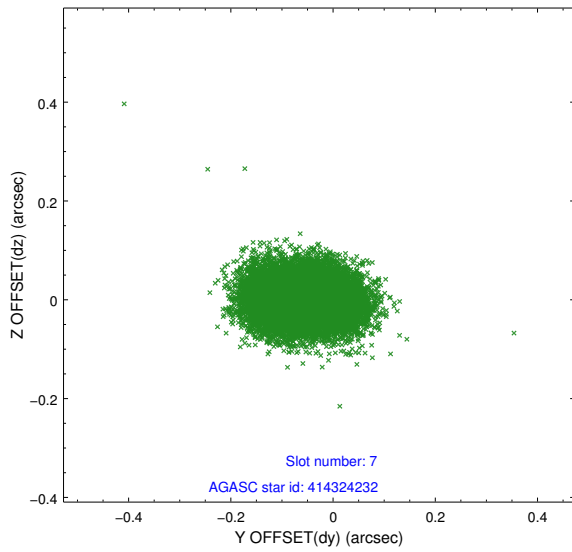
2.4.3 Slot 5



2.4.4 Slot 6

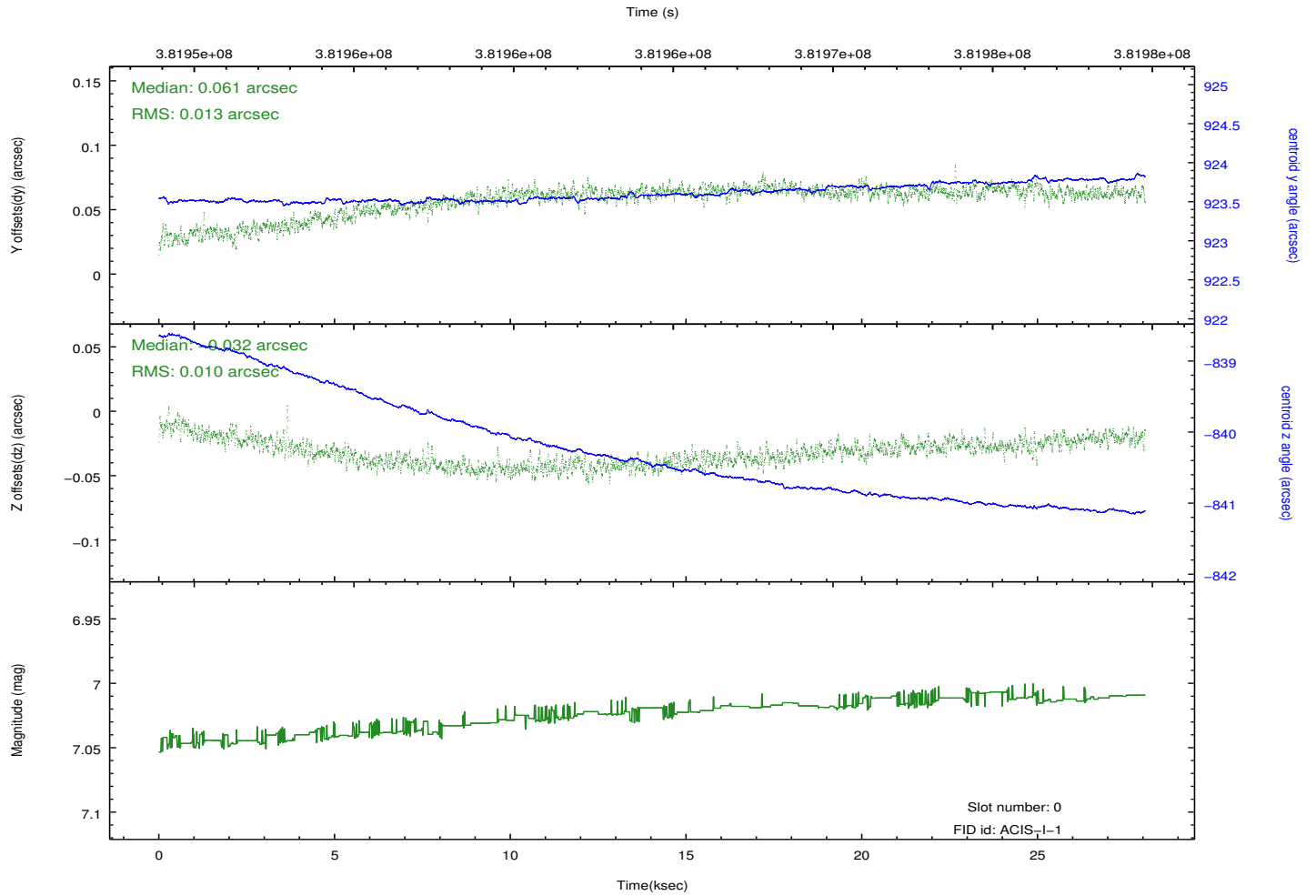
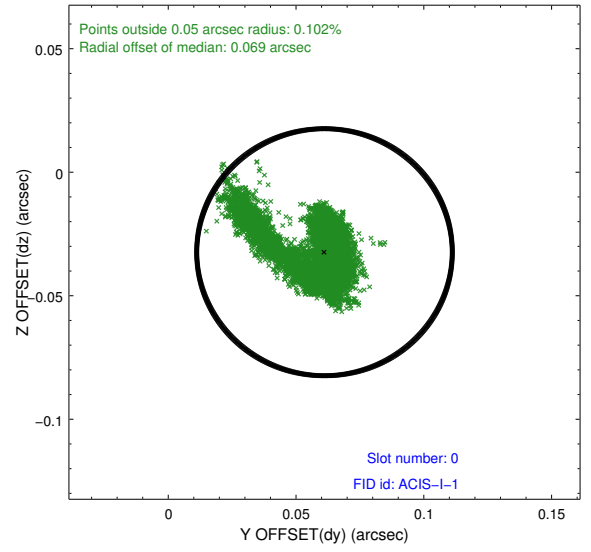
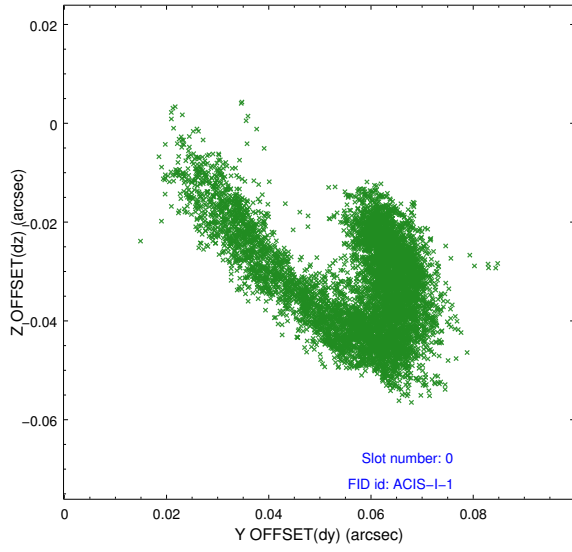


2.4.5 Slot 7

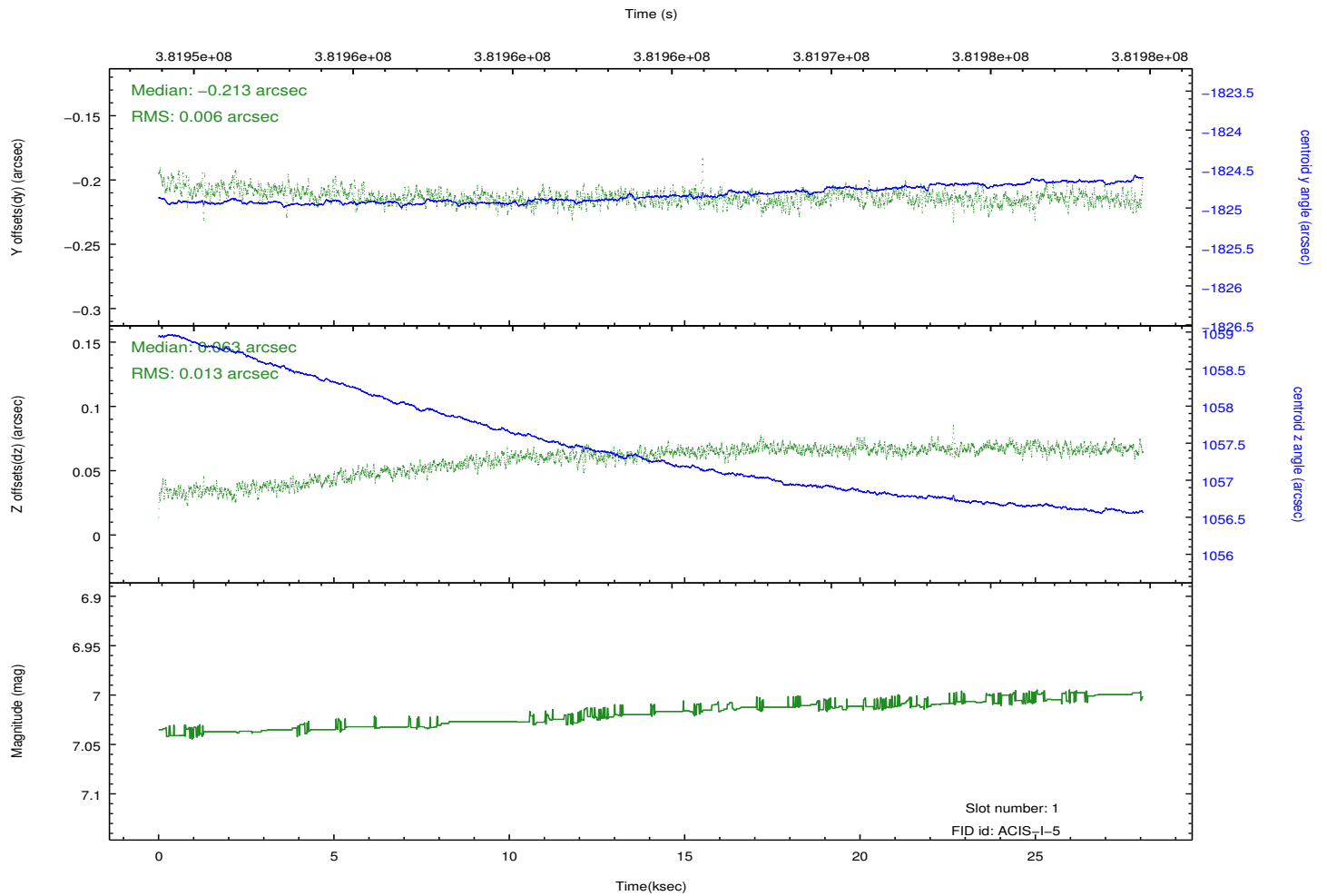
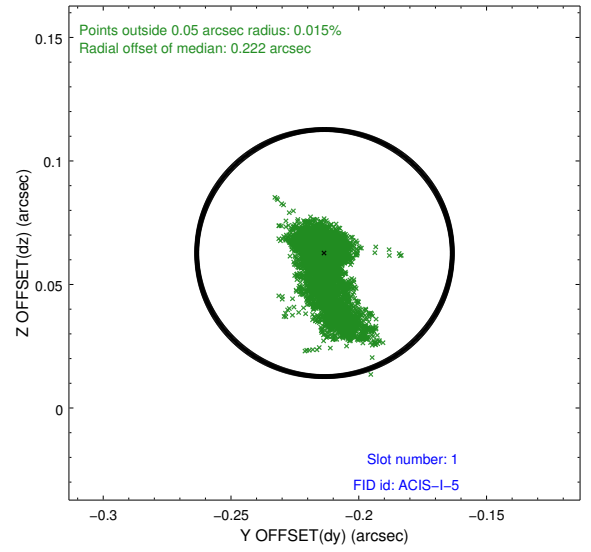
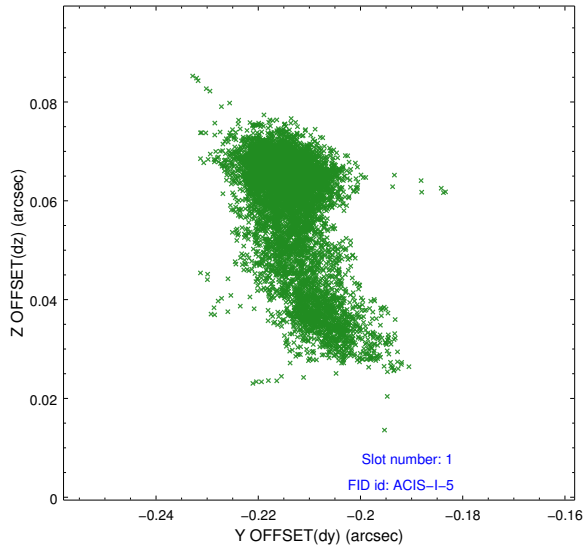


2.5 FID Slots

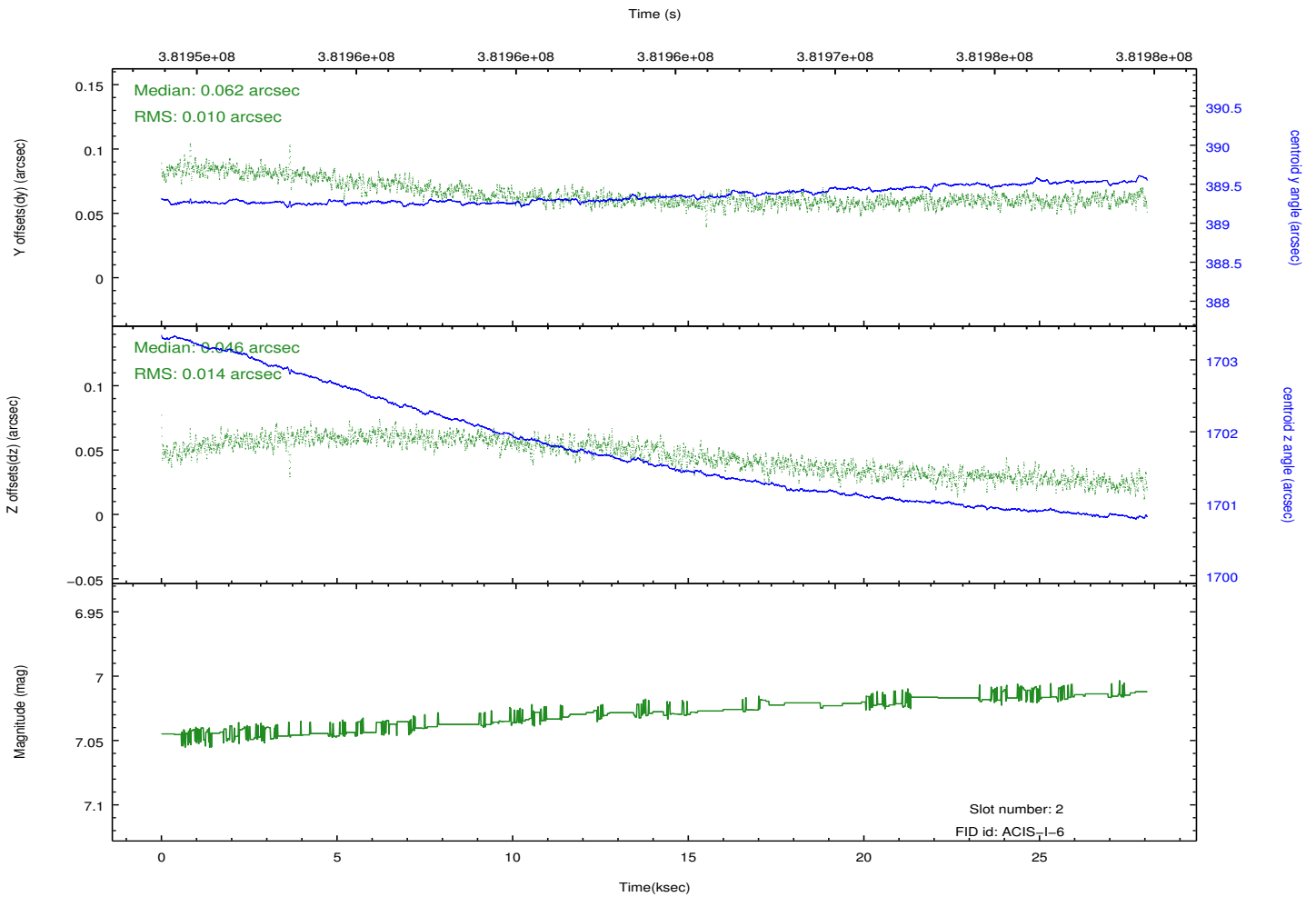
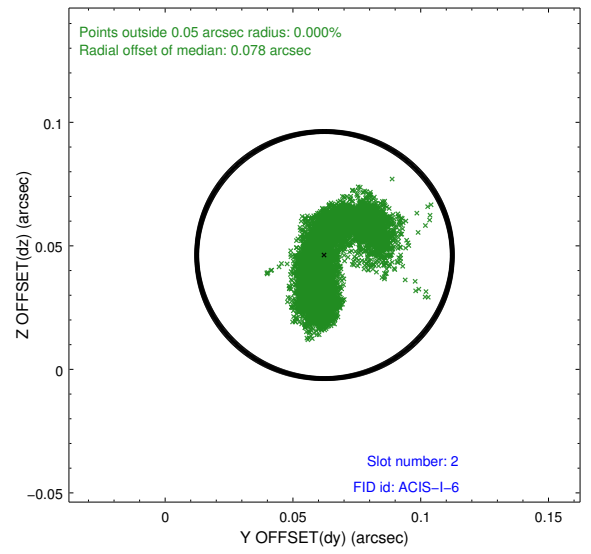
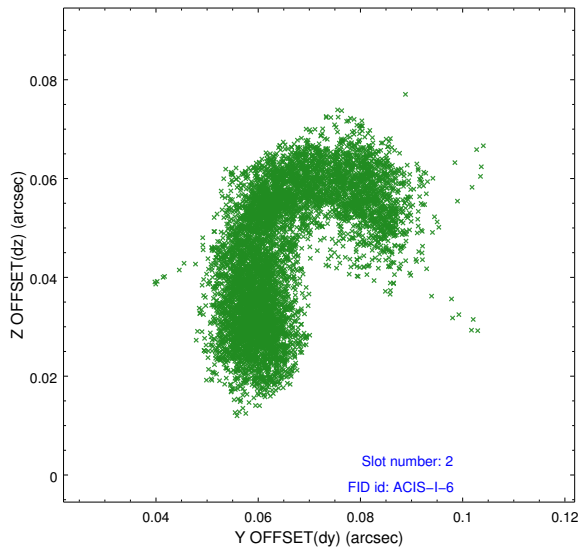
2.5.1 Slot 0



2.5.2 Slot 1



2.5.3 Slot 2



A Summary

A.1 Status

V&V Scientist	Jen Lauer
V&V Date (YYYY-MM-DD)	2012.06.27
V&V Edition	1
V&V Disposition and Status	OK
V&V Charge Time	27.809882779956

A.2 Comments

Roll preference met.