

V&V Reference Report

L2 ASCDS Version : 8.4.5

Observation 10990 - L2 Version 3
Chandra X-Ray Center

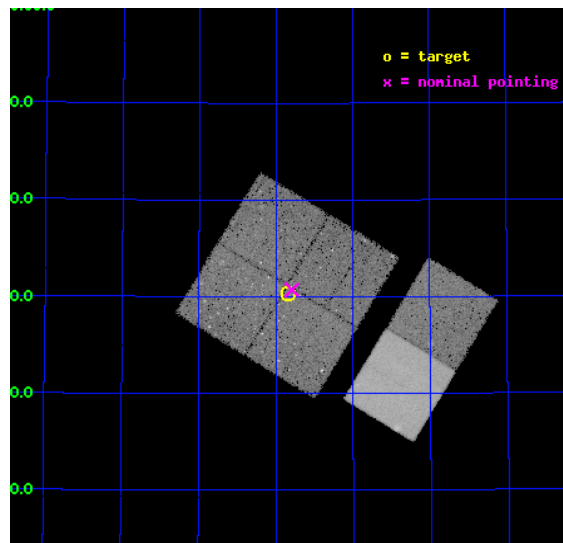
L2 Processing Date : Jun 28 2012

Contents

1	Front	2
2	OBI	3
2.1	OBI	3
2.1.1	Images	3
2.1.2	Bias	3
2.1.3	Parameters	4
2.1.4	Events	4
2.2	Compared Parameters	5
2.3	Aspect	6
2.4	Star Slots	9
2.4.1	Slot 3	9
2.4.2	Slot 4	10
2.4.3	Slot 5	11
2.4.4	Slot 6	12
2.4.5	Slot 7	13
2.5	FID Slots	14
2.5.1	Slot 0	14
2.5.2	Slot 1	15
2.5.3	Slot 2	16
A	Summary	17
A.1	Status	17
A.2	Comments	17

1 Front

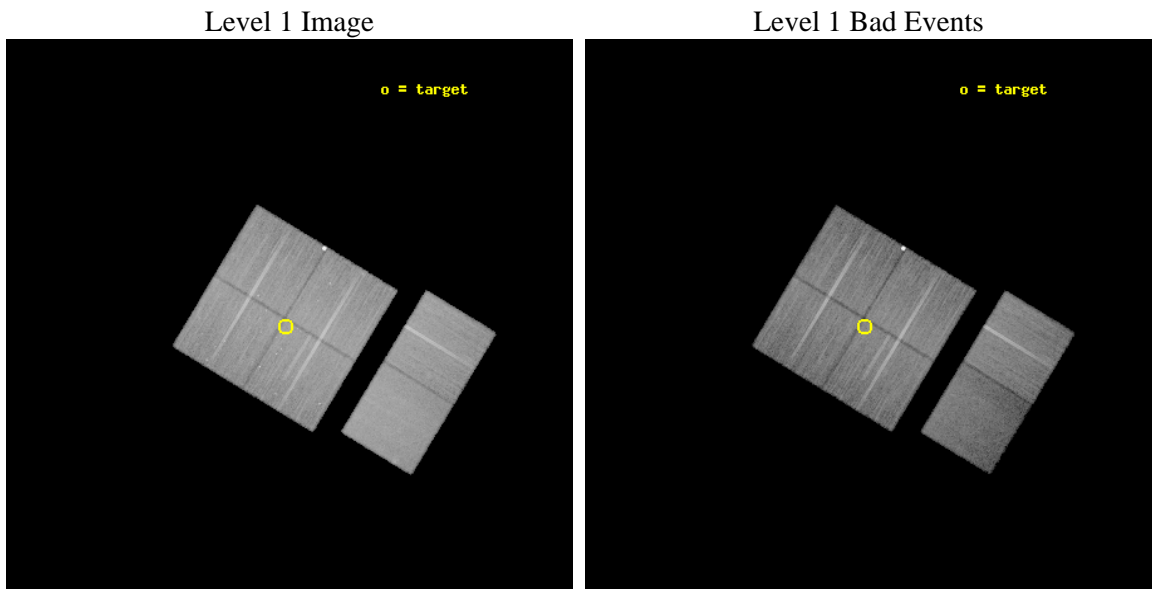
seq_num	200621	Sequence number
obs_id	10990	Observation id
title	BRC36/IC1396 as a Testbed of Triggered Star Formation (GO part)	Pr
observer	Dr. Konstantin Getman	Principal investigator
object	IC1396_BRC36	Source name
dtcycle	0	
cycle	P	events from which exps? Prim/Second/Both
ra_targ	324.209583	Observer's specified target RA [deg]
dec_targ	57.506667	Observer's specified target Dec [deg]
ra_nom	324.19832179158	Nominal RA [deg]
dec_nom	57.512022464847	Nominal Dec [deg]
roll_nom	121.18682480051	Nominal Roll [deg]
revision	3	Processing version of data
ontime	30043.516727626	Sum of GTIs [s]
livetime	29663.087628787	Livetime [s]
ontime0	30046.634657919	Sum of GTIs [s]
ontime1	30049.916668177	Sum of GTIs [s]
ontime2	30033.752747059	Sum of GTIs [s]
ontime3	30043.516727626	Sum of GTIs [s]
ontime6	30046.839827836	Sum of GTIs [s]
ontime7	30050.039788187	Sum of GTIs [s]
l2events	202990	Number of level 2 events



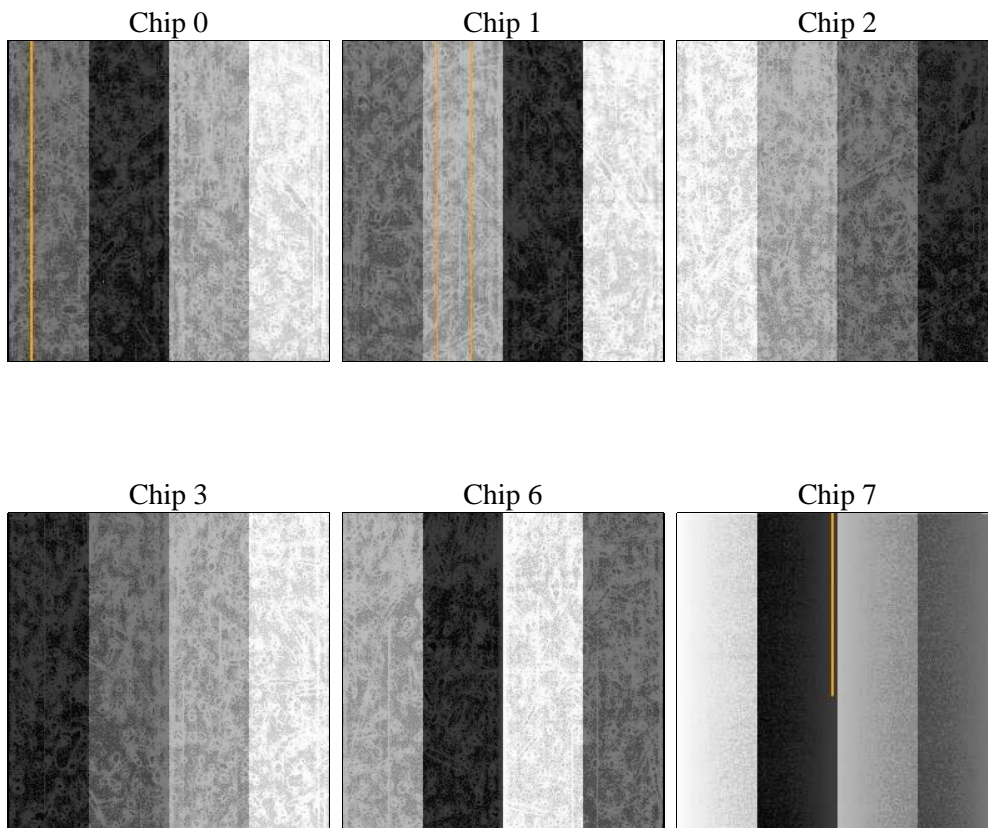
2 OBI

2.1 OBI

2.1.1 Images



2.1.2 Bias



2.1.3 Parameters

obi_num	0	Obi number	sched_exp_time	30000.000000	[s] Scheduled observation exposure time
ascdsver	8.4.5	Processing system revision	ontime	30043.516727626	Sum of GTIs [s]
caldbver	4.5.0	 	ontime0	30046.634657919	Sum of GTIs [s]
date	2012-06-28T13:50:29	Date and time of file creation	ontime1	30049.916668177	Sum of GTIs [s]
revision	3	Processing version of data	ontime2	30033.752747059	Sum of GTIs [s]
			ontime3	30043.516727626	Sum of GTIs [s]
			ontime6	30046.839827836	Sum of GTIs [s]
			ontime7	30050.039788187	Sum of GTIs [s]
			l1events	1264609	Number of level 1 events

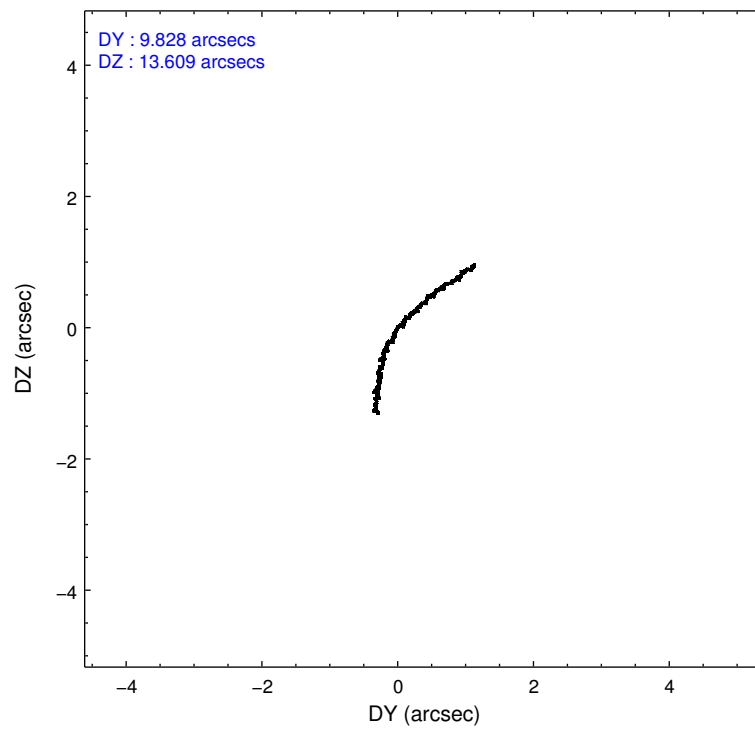
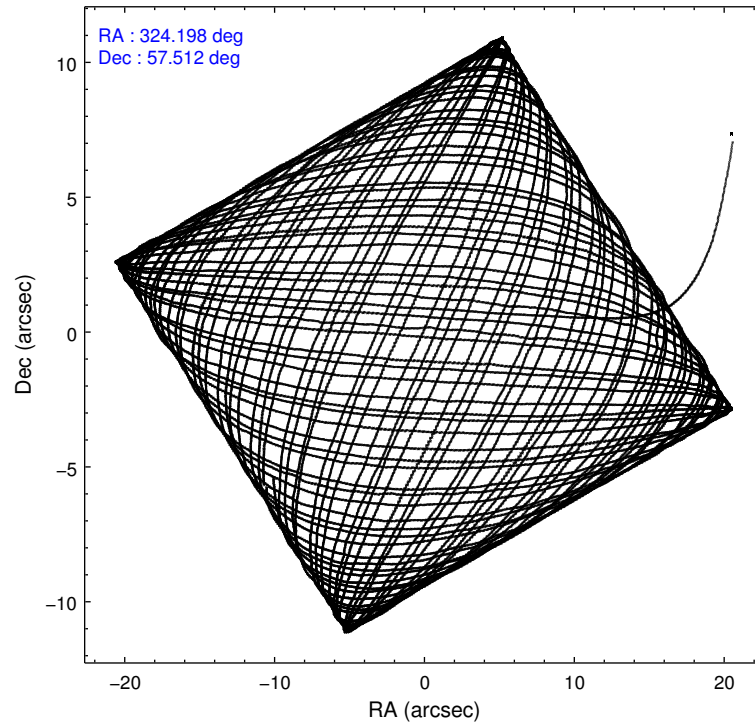
2.1.4 Events

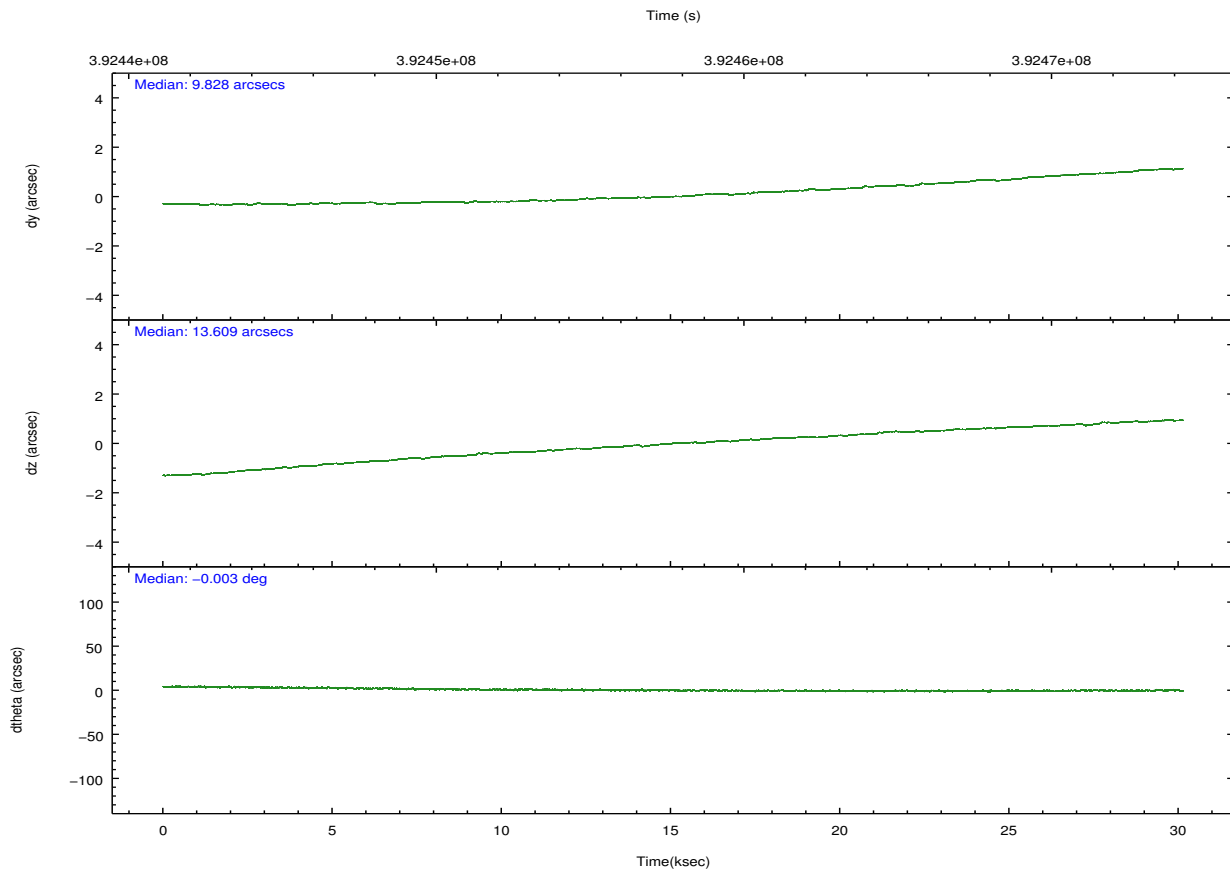
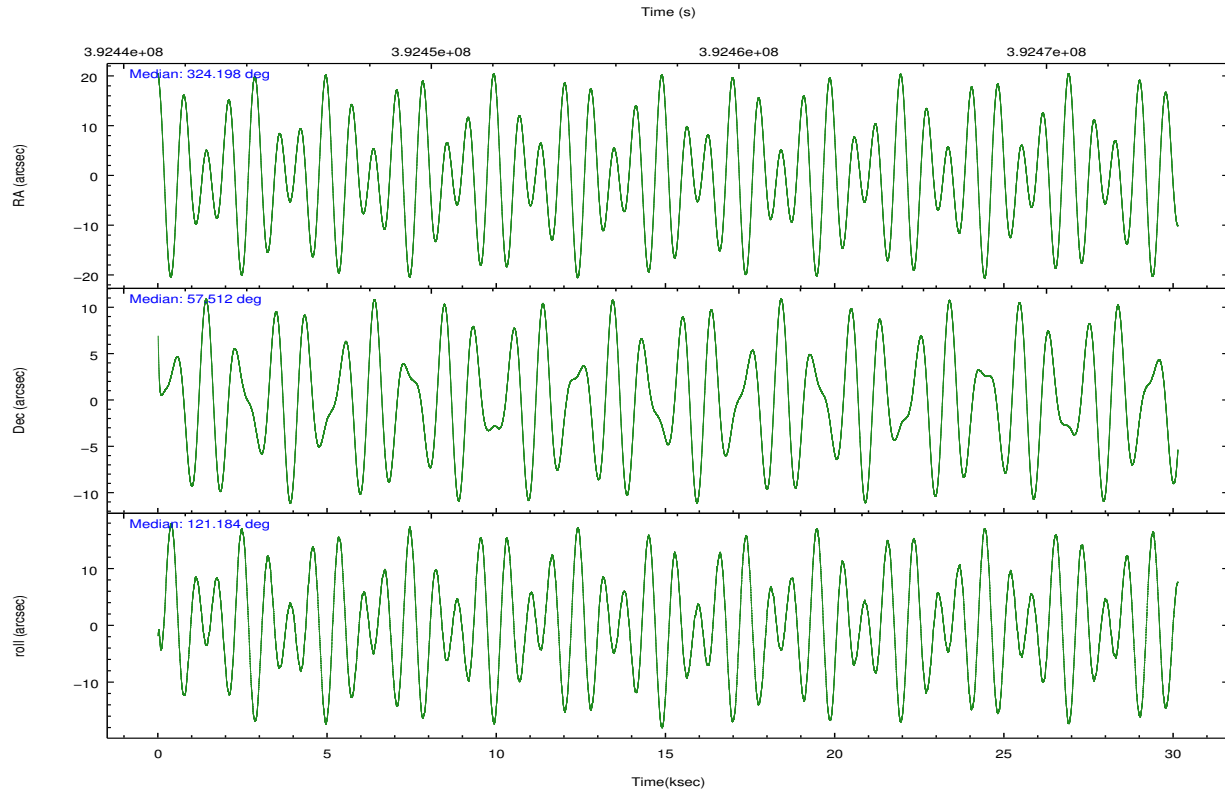
	ccd 0	ccd 1	ccd 2	ccd 3	ccd 6	ccd 7		ccd 0	ccd 1	ccd 2	ccd 3	ccd 6	ccd 7
level 1 events	204718	200135	220806	207552	212575	218823	grade 0 events	8791	10217	8904	9729	8756	10924
rejected events	181275	174328	198443	183974	188843	111873		4%	5%	4%	4%	4%	4%
rejected %	88%	87%	89%	88%	88%	51%	grade 1 events	114	121	133	150	105	332
								0%	0%	0%	0%	0%	0%
							grade 2 events	5641	5599	5144	5034	5392	22601
								2%	2%	2%	2%	2%	10%
							grade 3 events	2465	2658	2279	2379	2428	9821
								1%	1%	1%	1%	1%	4%
							grade 4 events	2290	2503	2245	2361	2356	9869
								1%	1%	1%	1%	1%	4%
							grade 5 events	15441	7823	6520	8156	8186	23764
								7%	3%	2%	3%	3%	10%
							grade 6 events	4260	4835	3794	4079	4802	53747
								2%	2%	1%	1%	2%	24%
							grade 7 events	165716	166379	191787	175664	180550	87765
								80%	83%	86%	84%	84%	40%

2.2 Compared Parameters

Parameter	Planned	Actual	Parameter	Planned	Actual
Instrument	ACIS	ACIS	Obspar format version number	7	7
Detector	ACIS-012367	ACIS-012367	Obspar file type	PREDICTED	ACTUAL
Grating	NONE	NONE	Obspar update status	NONE	UPDATED
Data mode	VFAINT	VFAINT	CCD I0 on	Y	Y
Observation mode	POINTING	POINTING	CCD I1 on	Y	Y
[deg] Pointing RA	324.243260	324.1983217915755	CCD I2 on	Y	Y
[deg] Pointing Dec	57.498874	57.51202246484677	CCD I3 on	Y	Y
[deg] Pointing Roll	120.940230	121.1868248005116	CCD S0 on	N	N
[mm] SIM focus pos	-0.782348	-0.7809083437167272	CCD S1 on	N	N
[mm] SIM defocus	0	0.001439871863259334	CCD S2 on	O2	Y
[mm] SIM translation stage pos	-233.592463	-233.5874344608287	CCD S3 on	O1	Y
[mm] SIM translation stage offset	0	-0.005018542100998502	CCD S4 on	N	N
[s] Observation start time (MET)	392442767.184000	392441707.63476	CCD S5 on	N	N
Observation start date	2010-06-09T03:51:41	2010-06-09T03:35:07	Number of optional ACIS chips dropped	0	0
[s] Observation end time (MET)	392472767.184000	392473926.4614	On-chip summing requested	N	N
Observation end date	2010-06-09T12:11:41	2010-06-09T12:32:06	Subarray requested	NONE	NONE
Read mode	TIMED	TIMED	Alternating exposures requested	N	N
			[s] Primary exposure time	0.000000	3.2

2.3 Aspect



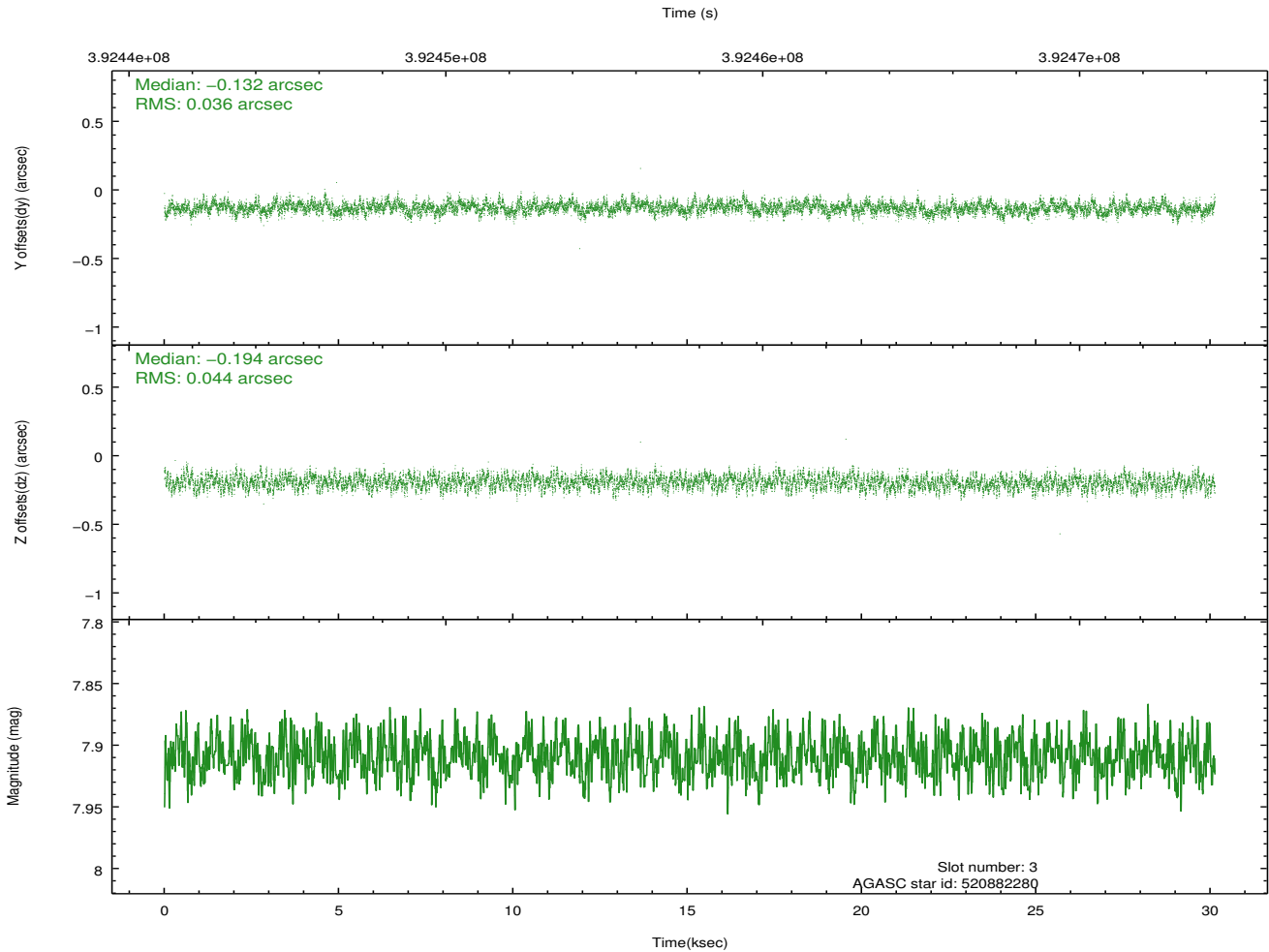
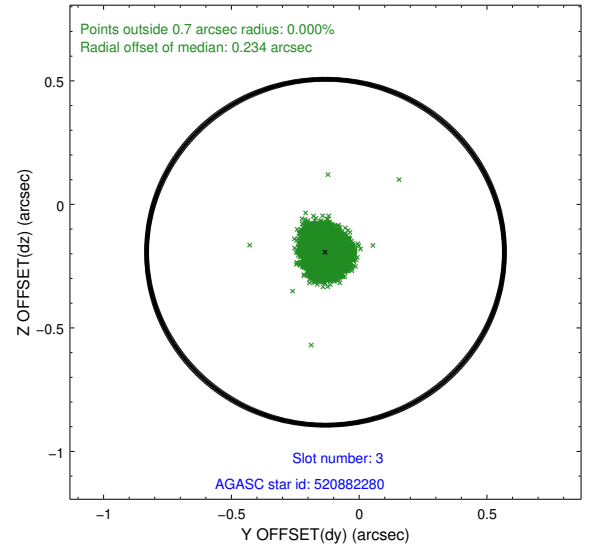
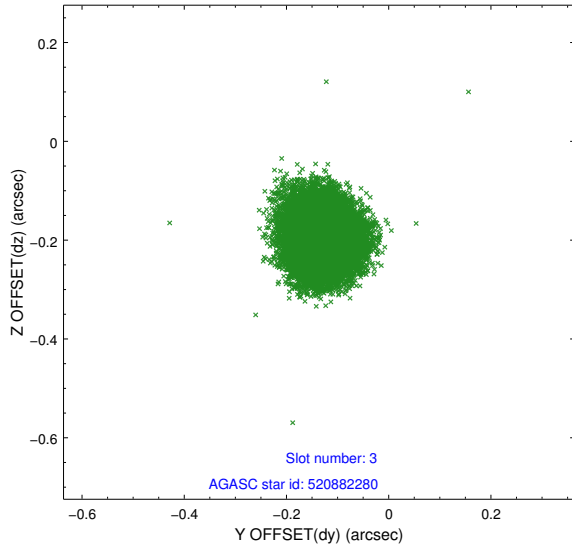


Slot Statistics

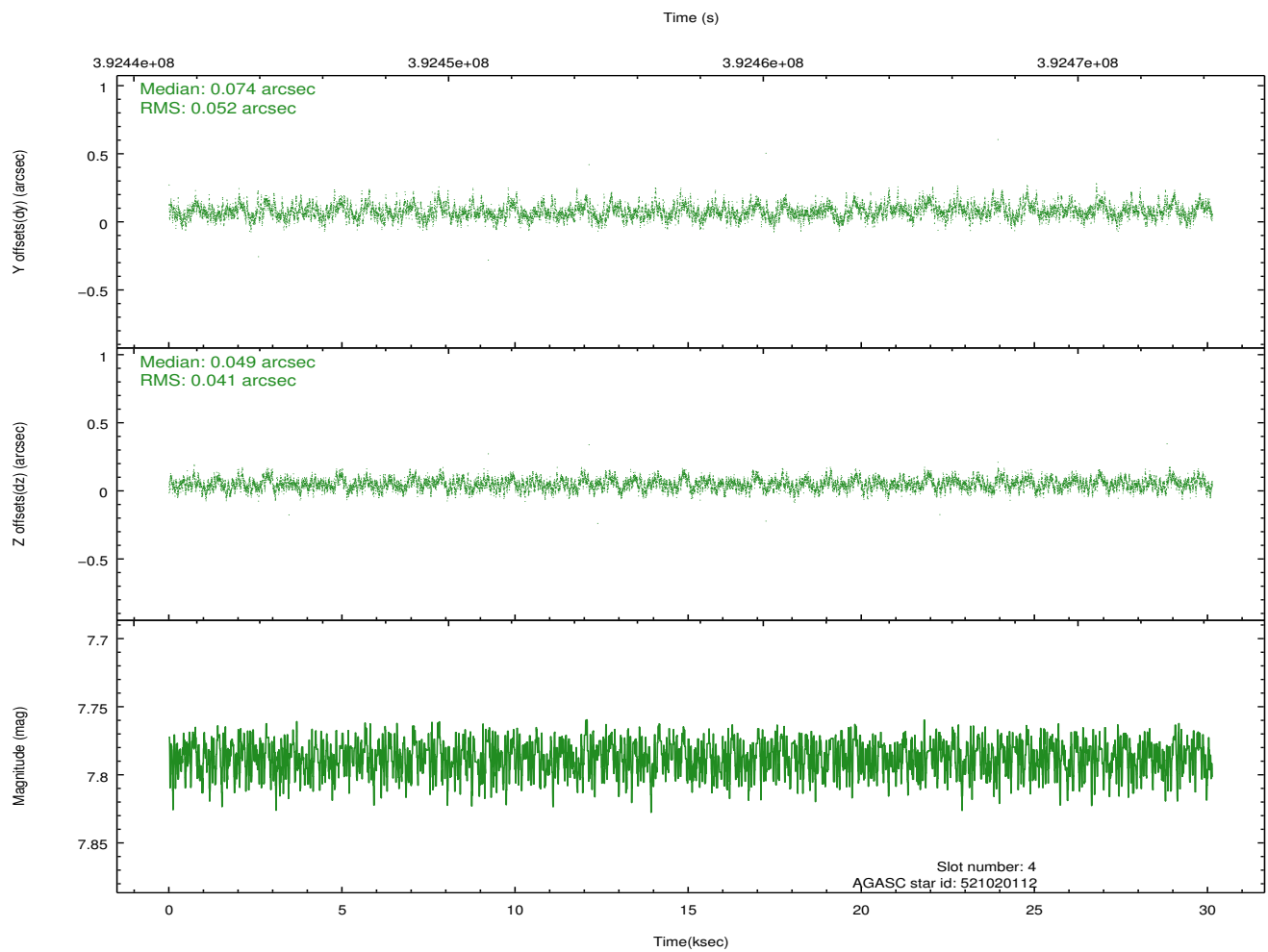
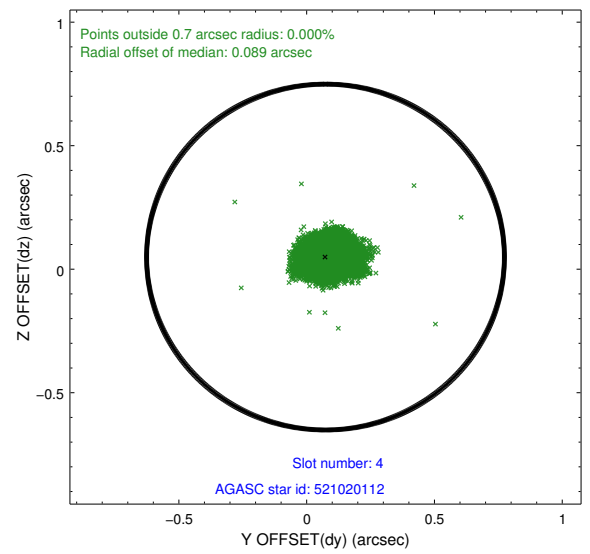
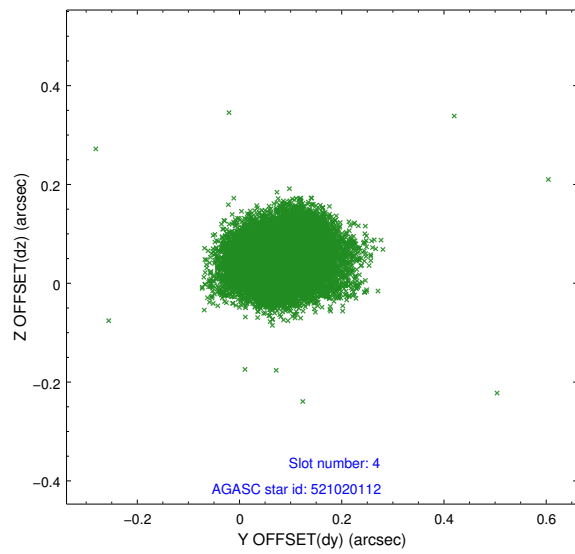
slot	status	id	mag	n_pts	med_dy	med_dz	dr1	dr2	ra	dec	mean_y	mean_z
0	FID	ACIS-I-1	7.09	7349	0.054	0.005	0.031	0.049	0.000000	0.000000	929.67	-837.09
1	FID	ACIS-I-5	7.07	7350	-0.211	0.063	0.024	0.038	0.000000	0.000000	-1818.68	1060.39
2	FID	ACIS-I-6	7.08	7349	0.066	0.005	0.013	0.026	0.000000	0.000000	395.12	1704.95
3	GUIDE	520882280	7.91	14699	-0.132	-0.194	0.062	0.096	323.124310	57.538342	1248.69	1772.48
4	GUIDE	521020112	7.79	14697	0.074	0.049	0.069	0.115	324.609515	56.973735	-1989.03	354.78
5	GUIDE	521023480	8.51	14691	0.167	0.162	0.061	0.099	325.256533	57.138511	-2117.26	-1038.39
6	GUIDE	521545688	8.64	14687	-0.012	0.204	0.077	0.128	324.248507	58.140166	1975.09	-1195.23
7	GUIDE	520883640	7.41	14698	-0.098	-0.225	0.070	0.108	322.910028	57.502591	1359.00	2191.59

2.4 Star Slots

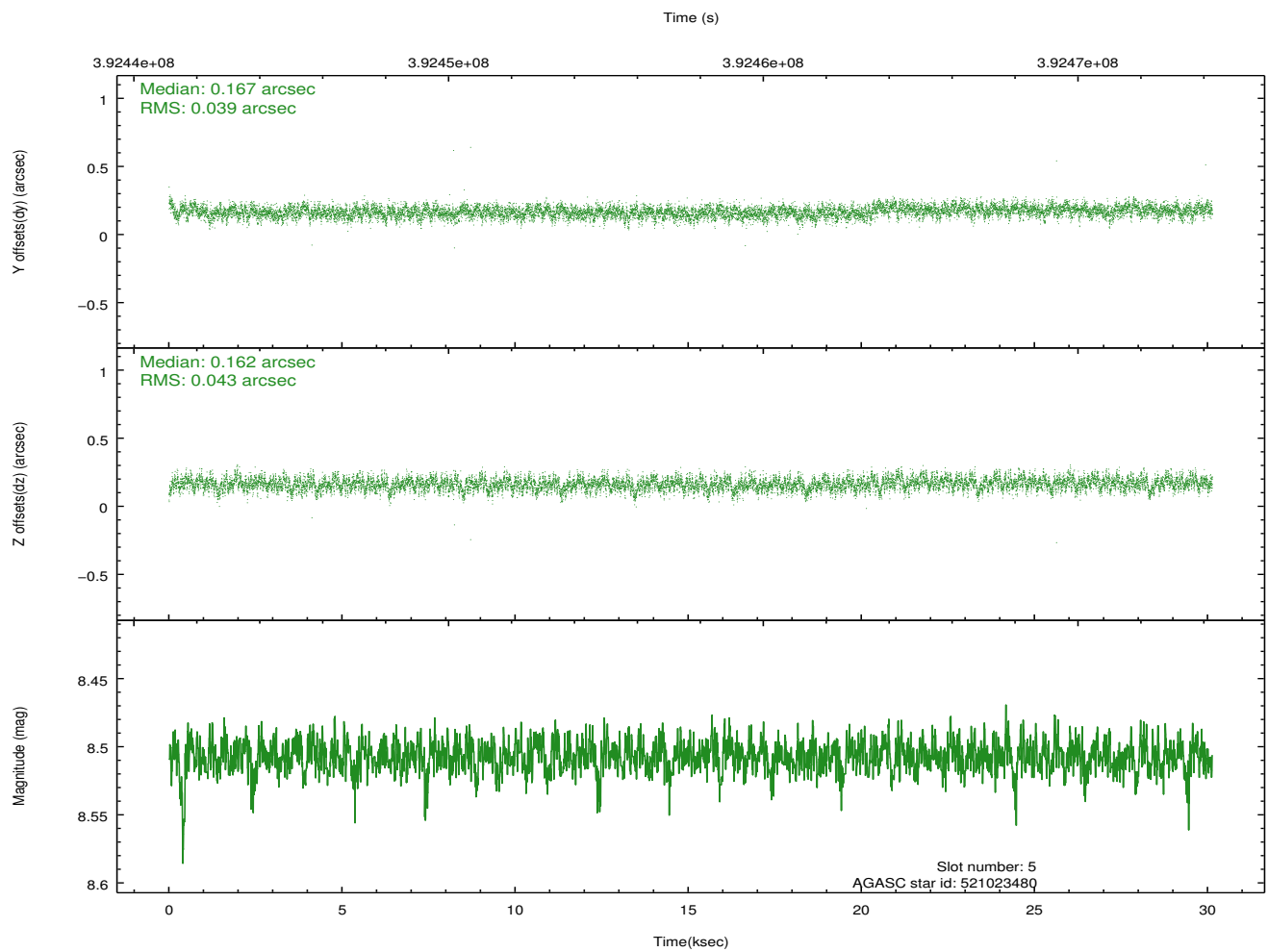
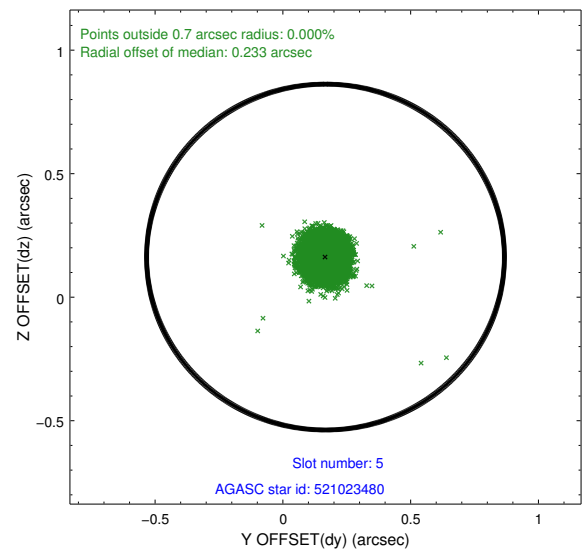
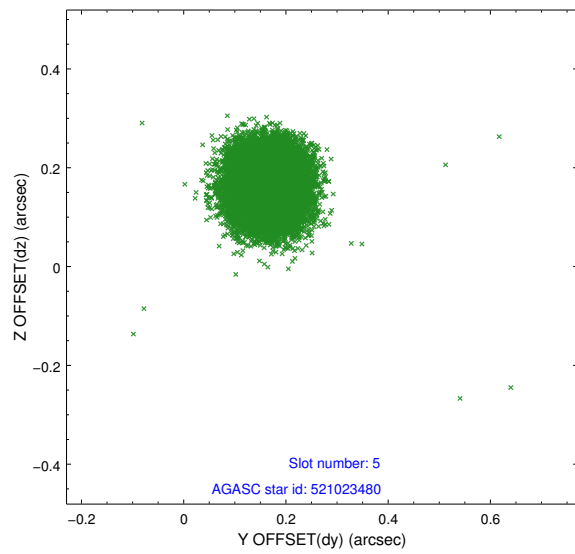
2.4.1 Slot 3



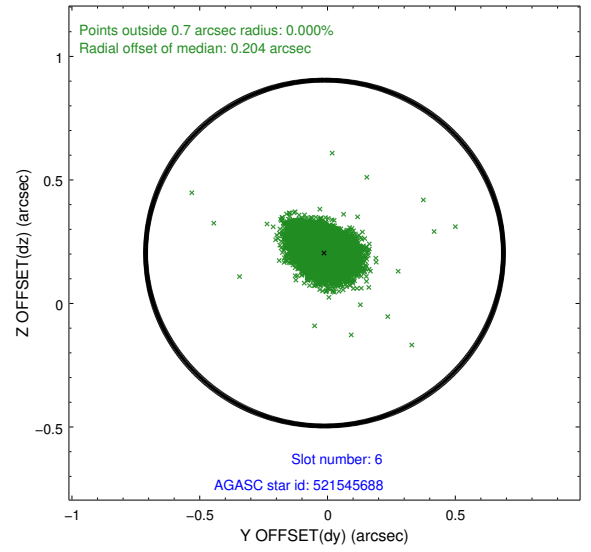
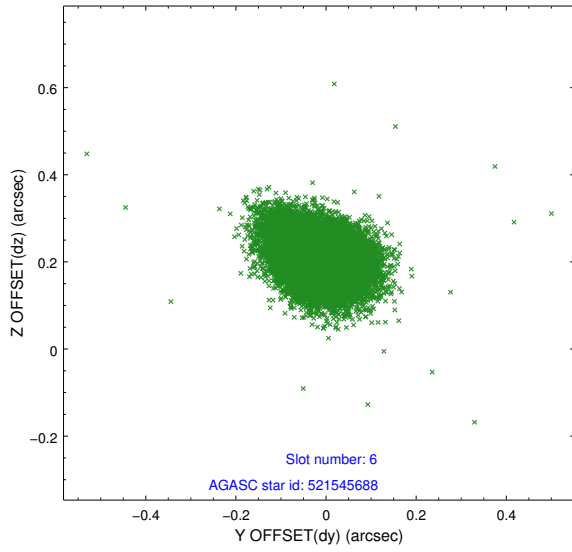
2.4.2 Slot 4



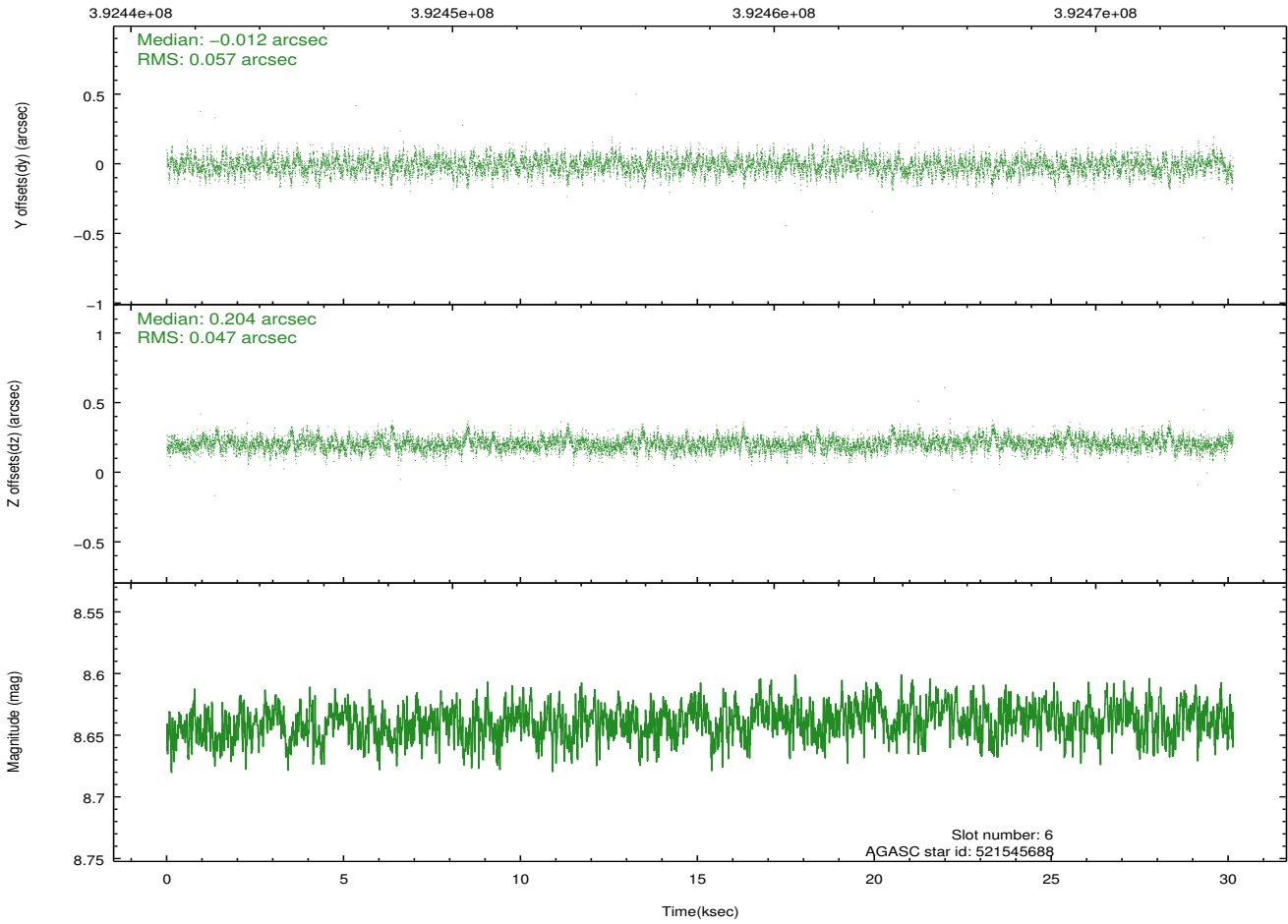
2.4.3 Slot 5



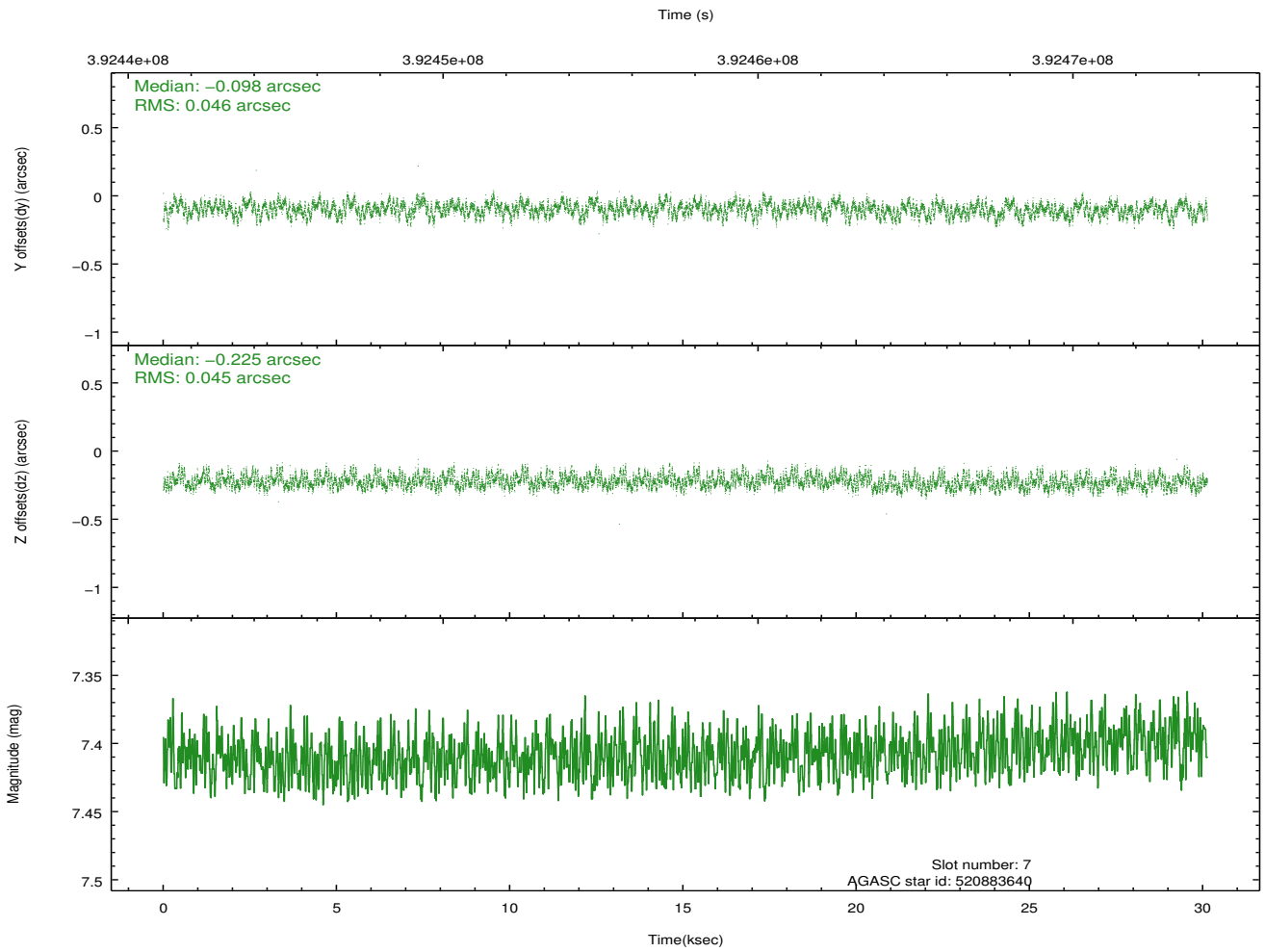
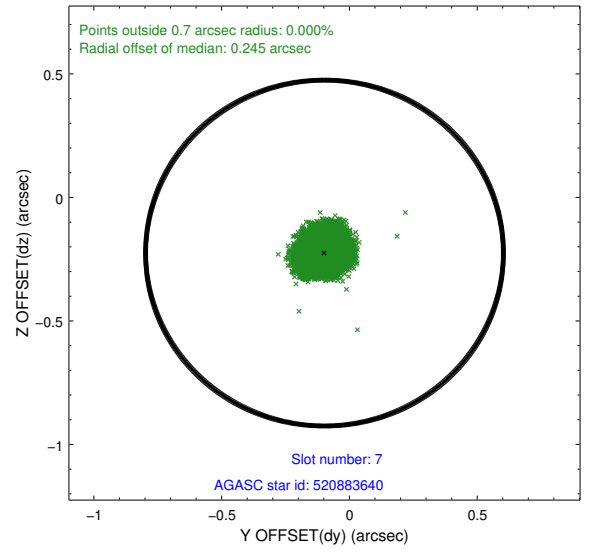
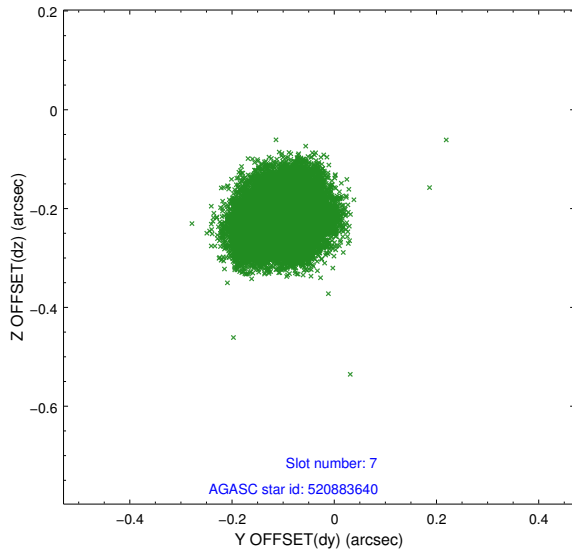
2.4.4 Slot 6



Time (s)

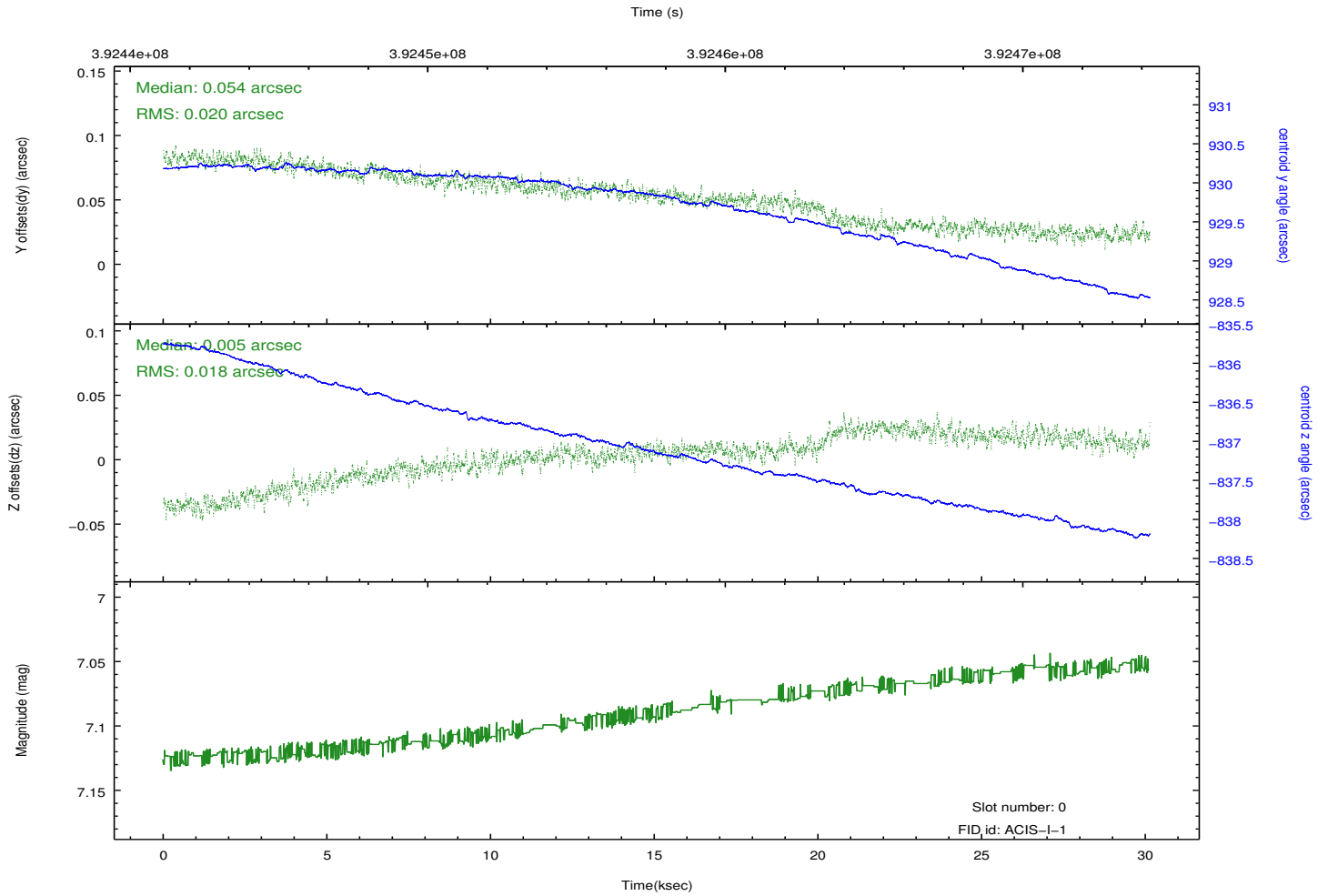
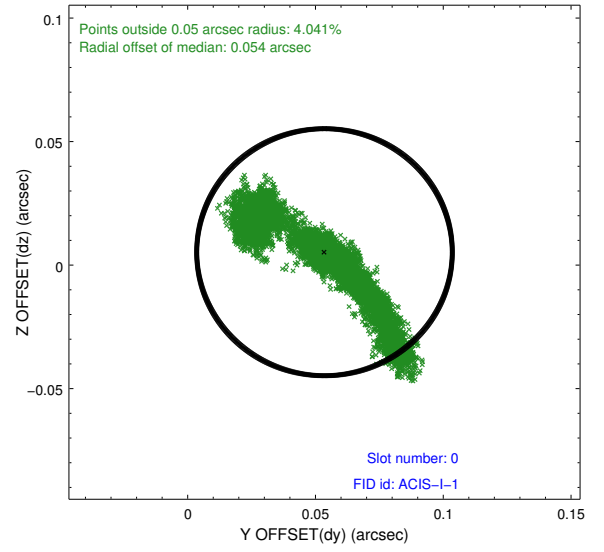
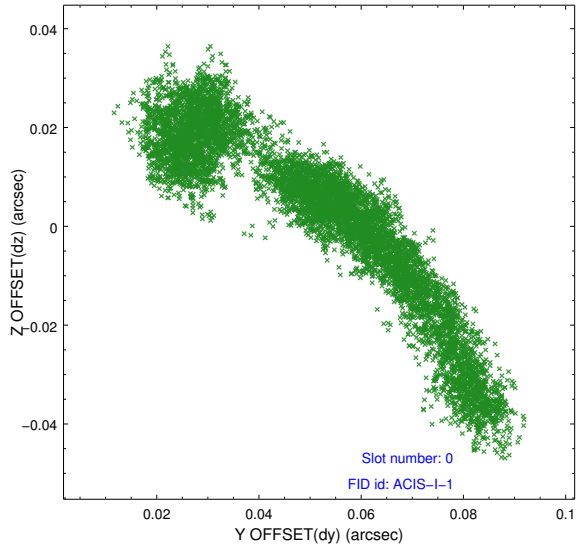


2.4.5 Slot 7

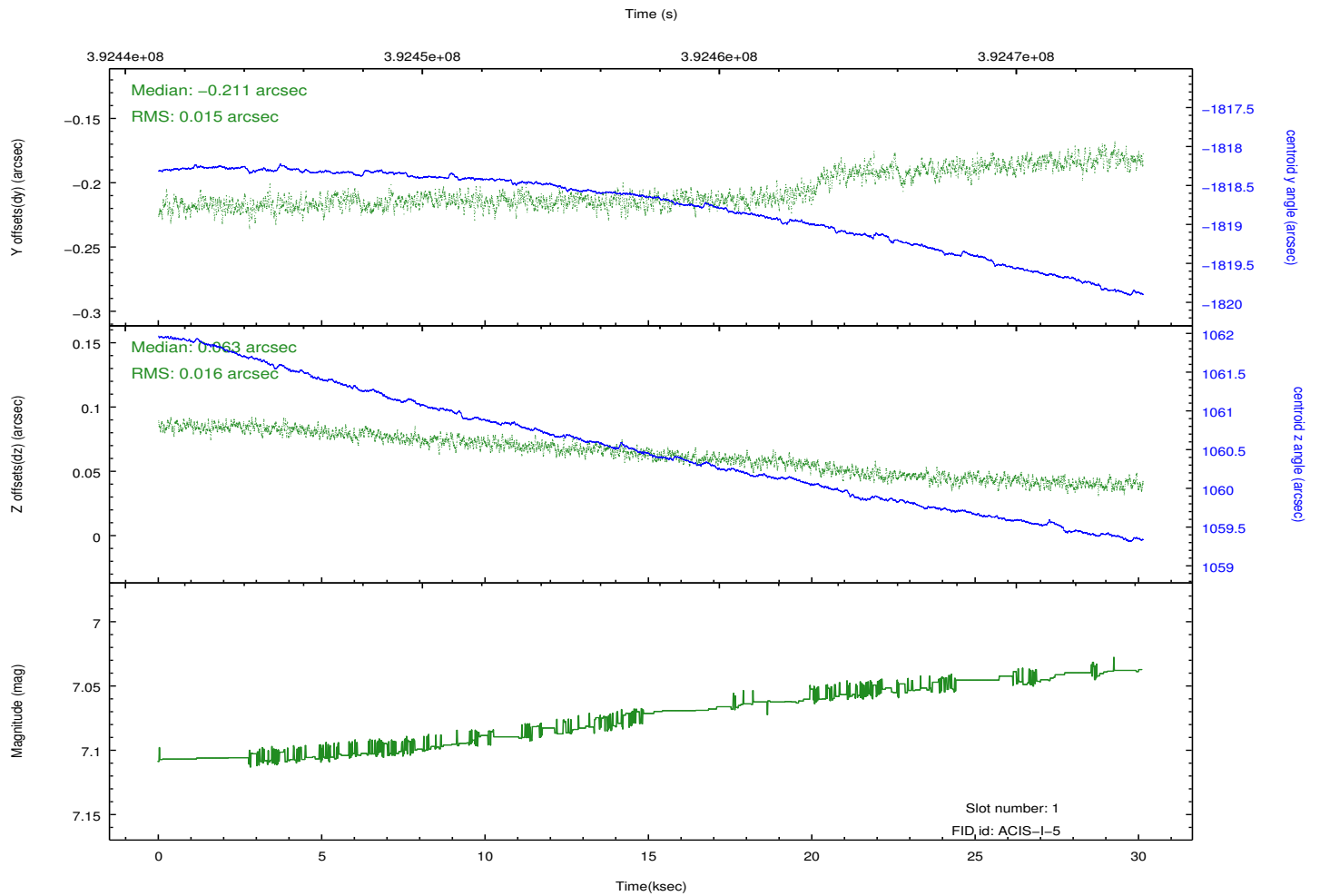
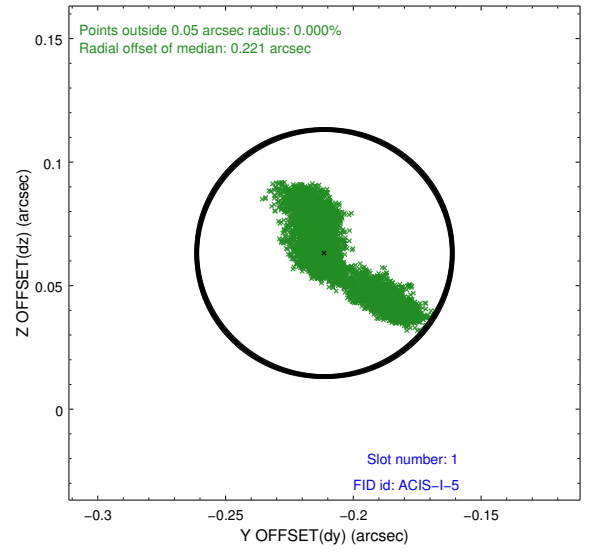
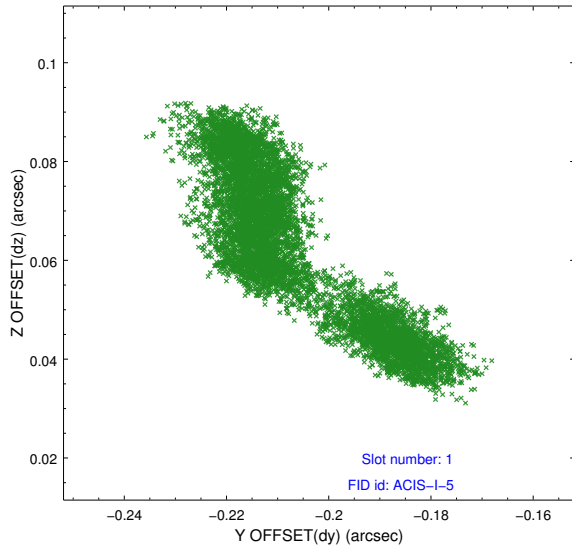


2.5 FID Slots

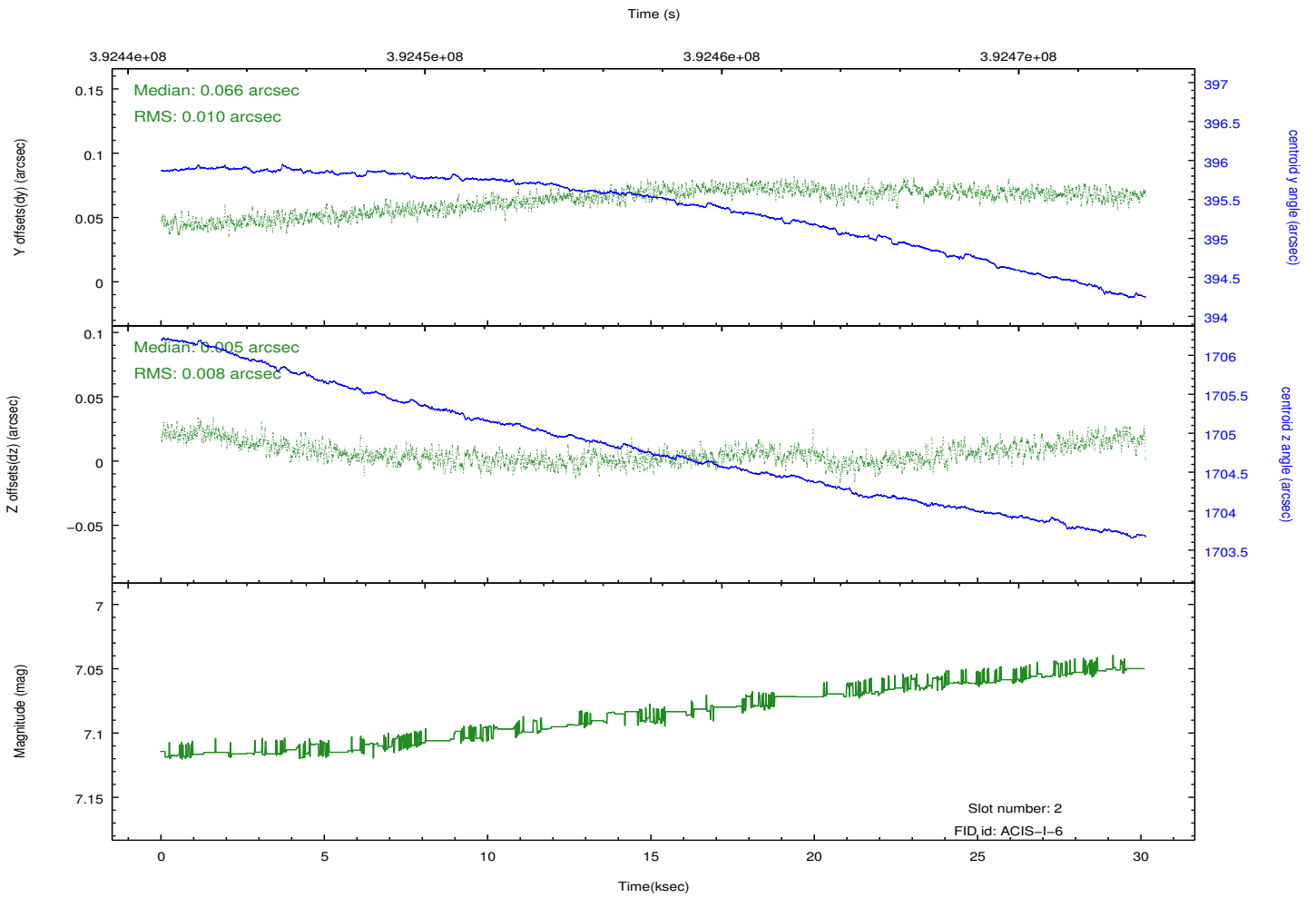
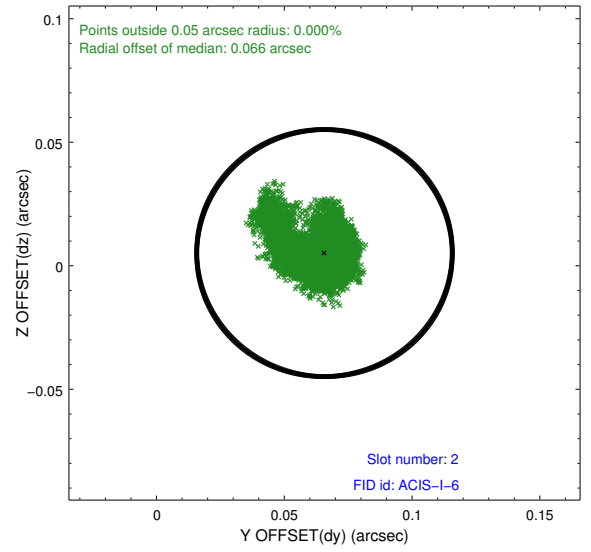
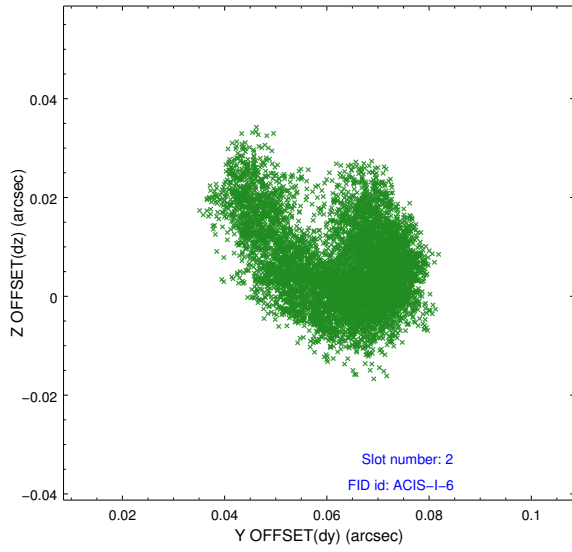
2.5.1 Slot 0



2.5.2 Slot 1



2.5.3 Slot 2



A Summary

A.1 Status

V&V Scientist	Jen Lauer
V&V Date (YYYY-MM-DD)	2012.07.05
V&V Edition	1
V&V Disposition and Status	OK
V&V Charge Time	30.043516719878

A.2 Comments

A spatial region of the original bias map for CCD = 3 suffered from anomalously high data values. Pixels in the event data that were bias-corrected by one of the original affected bias pixels may have an apparent energy shift. While the change in energy is expected to be small (~ 20 eV), it depends on many parameters that have not yet been fully explored for this bias anomaly. The bias map for CCD = 3 has been reconstructed for this processing to remove this anomaly using scaled data from a comparable bias map from another observation. The pixels affected by the anomaly are bounded by sky coords:
(324.28268, 57.37793), (324.28680, 57.37926), (324.23734, 57.42337), (324.23571, 57.41982)