

V&V Reference Report

L2 ASCDS Version : 8.5.1.1

Observation 11010 - L2 Version 3
Chandra X-Ray Center

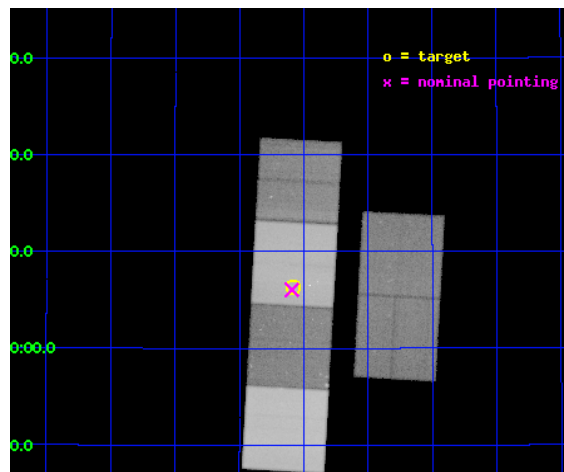
L2 Processing Date : Jan 9 2013

Contents

1	Front	2
2	OBI	3
2.1	OBI	3
2.1.1	Images	3
2.1.2	Bias	3
2.1.3	Parameters	4
2.1.4	Events	4
2.2	Compared Parameters	5
2.3	Aspect	6
2.4	Star Slots	9
2.4.1	Slot 3	9
2.4.2	Slot 4	10
2.4.3	Slot 5	11
2.4.4	Slot 6	12
2.4.5	Slot 7	13
2.5	FID Slots	14
2.5.1	Slot 0	14
2.5.2	Slot 1	15
2.5.3	Slot 2	16
A	Summary	17
A.1	Status	17
A.2	Comments	17

1 Front

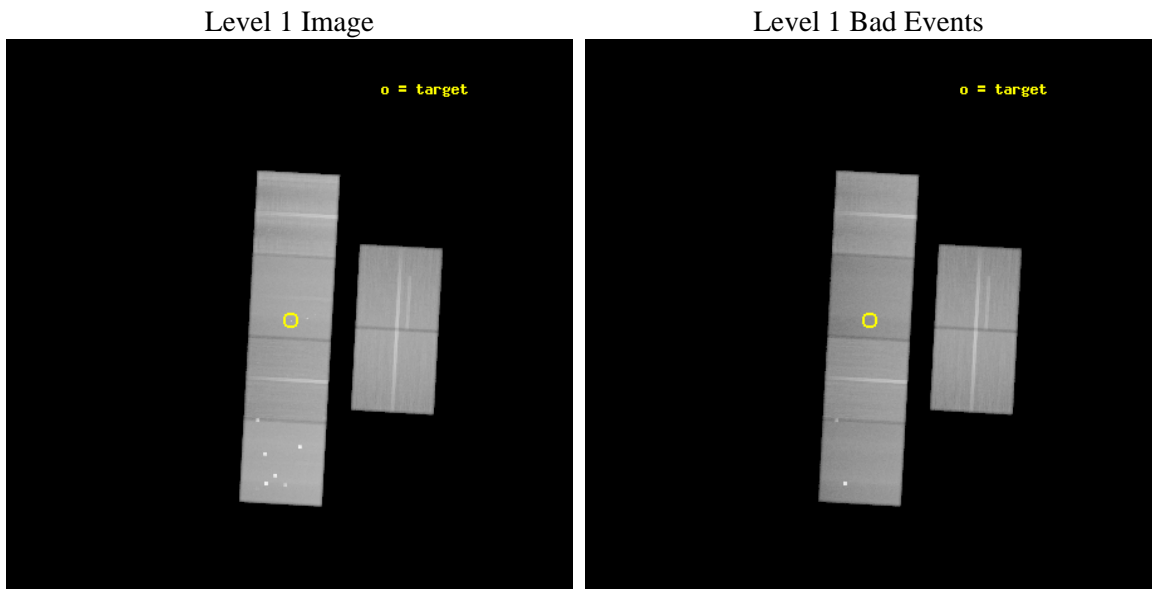
seq_num	200640	Sequence number
obs_id	11010	Observation id
title	New Thrust for Jets: Understanding the Physics of Young Stellar Jets and Outflows	Proposal title
observer	Prof. Manuel Guedel	Principal investigator
object	DG Tau	Source name
dtcycle	0	
cycle	P	events from which exps? Prim/Second/Both
ra_targ	66.77	Observer's specified target RA [deg]
dec_targ	26.104694	Observer's specified target Dec [deg]
ra_nom	66.773083675731	Nominal RA [deg]
dec_nom	26.100713198872	Nominal Dec [deg]
roll_nom	273.1552744869	Nominal Roll [deg]
revision	3	Processing version of data
ontime	119612.79955447	Sum of GTIs [s]
livetime	118098.19026433	Livetime [s]
ontime2	119603.07643354	Sum of GTIs [s]
ontime3	119596.59429181	Sum of GTIs [s]
ontime5	119612.79955447	Sum of GTIs [s]
ontime6	119599.83538258	Sum of GTIs [s]
ontime7	119612.79955447	Sum of GTIs [s]
ontime8	119593.35337144	Sum of GTIs [s]
l2events	1620332	Number of level 2 events



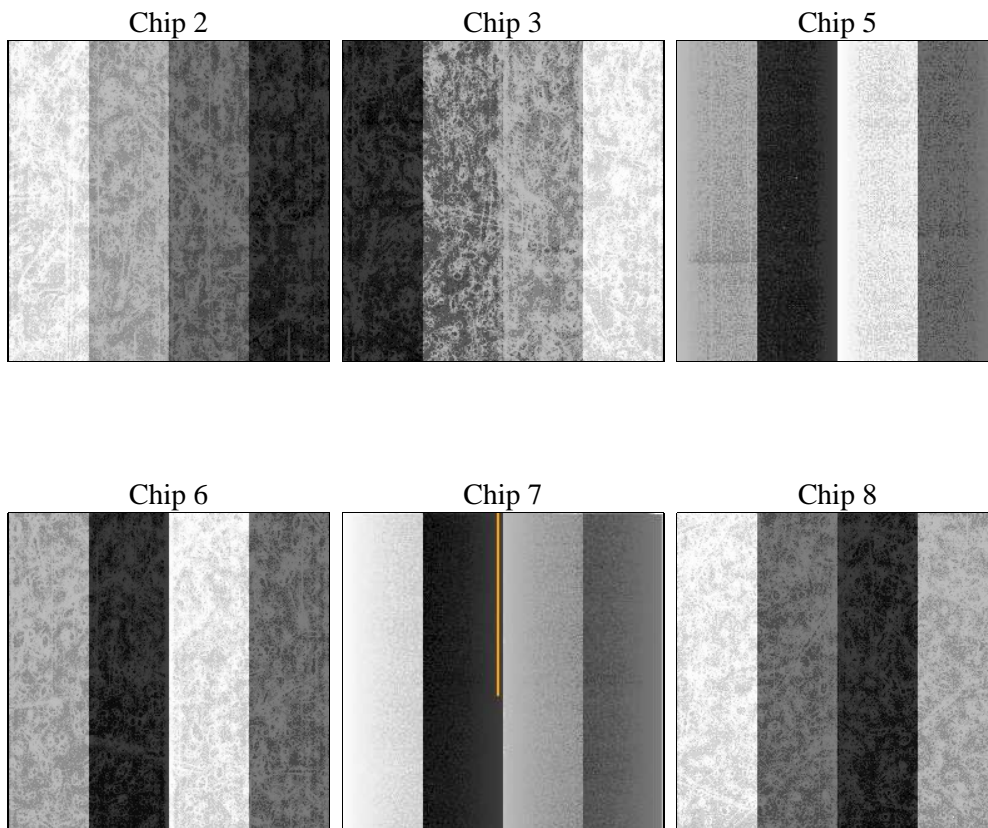
2 OBI

2.1 OBI

2.1.1 Images



2.1.2 Bias



2.1.3 Parameters

obi_num	0	Obi number	sched_exp_time	119500.000000	[s] Scheduled observation exposure time
ascdsver	8.5.1.1	Processing system revision	ontime	119612.79955447	Sum of GTIs [s]
caldbver	4.5.5	 	ontime2	119603.07643354	Sum of GTIs [s]
date	2013-01-09T00:59:54	Date and time of file creation	ontime3	119596.59429181	Sum of GTIs [s]
revision	3	Processing version of data	ontime5	119612.79955447	Sum of GTIs [s]
			ontime6	119599.83538258	Sum of GTIs [s]
			ontime7	119612.79955447	Sum of GTIs [s]
			ontime8	119593.35337144	Sum of GTIs [s]
			l1events	7401972	Number of level 1 events

2.1.4 Events

	ccd 2	ccd 3	ccd 5	ccd 6	ccd 7	ccd 8		ccd 2	ccd 3	ccd 5	ccd 6	ccd 7	ccd 8
level 1 events	1118737	1023956	1618377	1074071	1218647	1348184	grade 0 events	36987	34755	135438	39657	49262	93127
rejected events	1012990	925112	792996	961031	668931	1014412		3%	3%	8%	3%	4%	6%
rejected %	90%	90%	48%	89%	54%	75%	grade 1 events	659	587	4218	515	1716	1174
								0%	0%	0%	0%	0%	0%
							grade 2 events	25911	21529	235088	25357	112879	79897
								2%	2%	14%	2%	9%	5%
							grade 3 events	11041	11253	31271	12085	48665	36026
								0%	1%	1%	1%	3%	2%
							grade 4 events	11380	11131	29059	11686	48208	33260
								1%	1%	1%	1%	3%	2%
							grade 5 events	39000	43348	123201	44366	126419	64478
								3%	4%	7%	4%	10%	4%
							grade 6 events	20536	20275	395356	24383	291271	91792
								1%	1%	24%	2%	23%	6%
							grade 7 events	973223	881078	664746	916022	540227	948430
								86%	86%	41%	85%	44%	70%

2.2 Compared Parameters

Parameter	Planned	Actual	Parameter	Planned	Actual
Instrument	ACIS	ACIS	Obspar format version number	7	7
Detector	ACIS-235678	ACIS-235678	Obspar file type	PREDICTED	ACTUAL
Grating	NONE	NONE	Obspar update status	NONE	UPDATED
Data mode	VFAINT	VFAINT	CCD I0 on	N	N
Observation mode	POINTING	POINTING	CCD I1 on	N	N
[deg] Pointing RA	66.756080	66.7730836757313	CCD I2 on	O1	Y
[deg] Pointing Dec	26.123397	26.10071319887232	CCD I3 on	O2	Y
[deg] Pointing Roll	273.006126	273.1552744869035	CCD S0 on	N	N
[mm] SIM focus pos	-0.684267	-0.6828225247311905	CCD S1 on	Y	Y
[mm] SIM defocus	0	0.001444936568705701	CCD S2 on	Y	Y
[mm] SIM translation stage pos	-190.132523	-190.1425803651734	CCD S3 on	Y	Y
[mm] SIM translation stage offset	0	0.01005778216563158	CCD S4 on	Y	Y
[s] Observation start time (MET)	379321137.184000	379319981.89349	CCD S5 on	N	N
Observation start date	2010-01-08T06:57:51	2010-01-08T06:39:41	Number of optional ACIS chips dropped	0	0
[s] Observation end time (MET)	379440637.184000	379441535.11214	On-chip summing requested	N	N
Observation end date	2010-01-09T16:09:31	2010-01-09T16:25:35	Subarray requested	NONE	NONE
Read mode	TIMED	TIMED	Alternating exposures requested	N	N
			[s] Primary exposure time	0.000000	3.2

2.3 Aspect

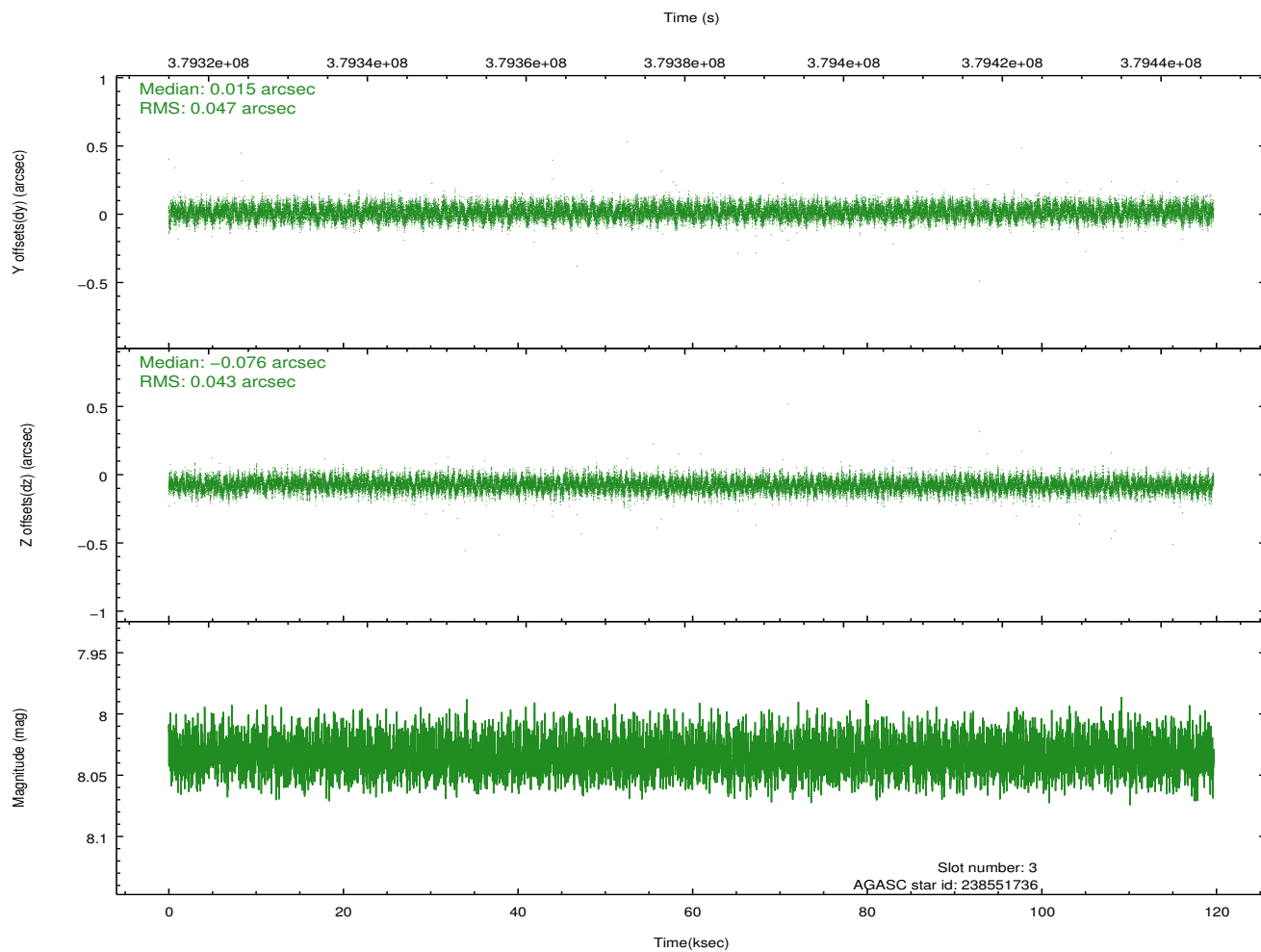
Slot Statistics

slot	status	id	mag	n_pts	med_dy	med_dz	dr1	dr2	ra	dec	mean_y	mean_z
0	FID	ACIS-S-2	6.98	29182	-0.102	0.021	0.042	0.053	0.000000	0.000000	-769.23	-1736.82
1	FID	ACIS-S-4	7.06	29185	0.193	0.104	0.048	0.052	0.000000	0.000000	2144.37	171.88
2	FID	ACIS-S-5	7.10	29183	-0.122	0.025	0.047	0.054	0.000000	0.000000	-1822.24	165.32
3	GUIDE	238551736	8.04	58348	0.015	-0.076	0.067	0.108	66.295103	25.749175	1265.25	-1562.46
4	GUIDE	238552952	8.64	58329	0.050	0.070	0.060	0.098	66.435210	25.897396	757.33	-1080.07
5	GUIDE	238560976	7.90	58347	-0.019	-0.039	0.054	0.087	66.476513	25.572013	1934.29	-1010.24
6	GUIDE	240257560	8.71	58259	0.046	-0.004	0.071	0.115	66.998185	25.718771	1495.59	708.25
7	GUIDE	240781424	9.16	58307	-0.092	0.049	0.099	0.159	67.378197	26.671551	-1869.99	2103.09

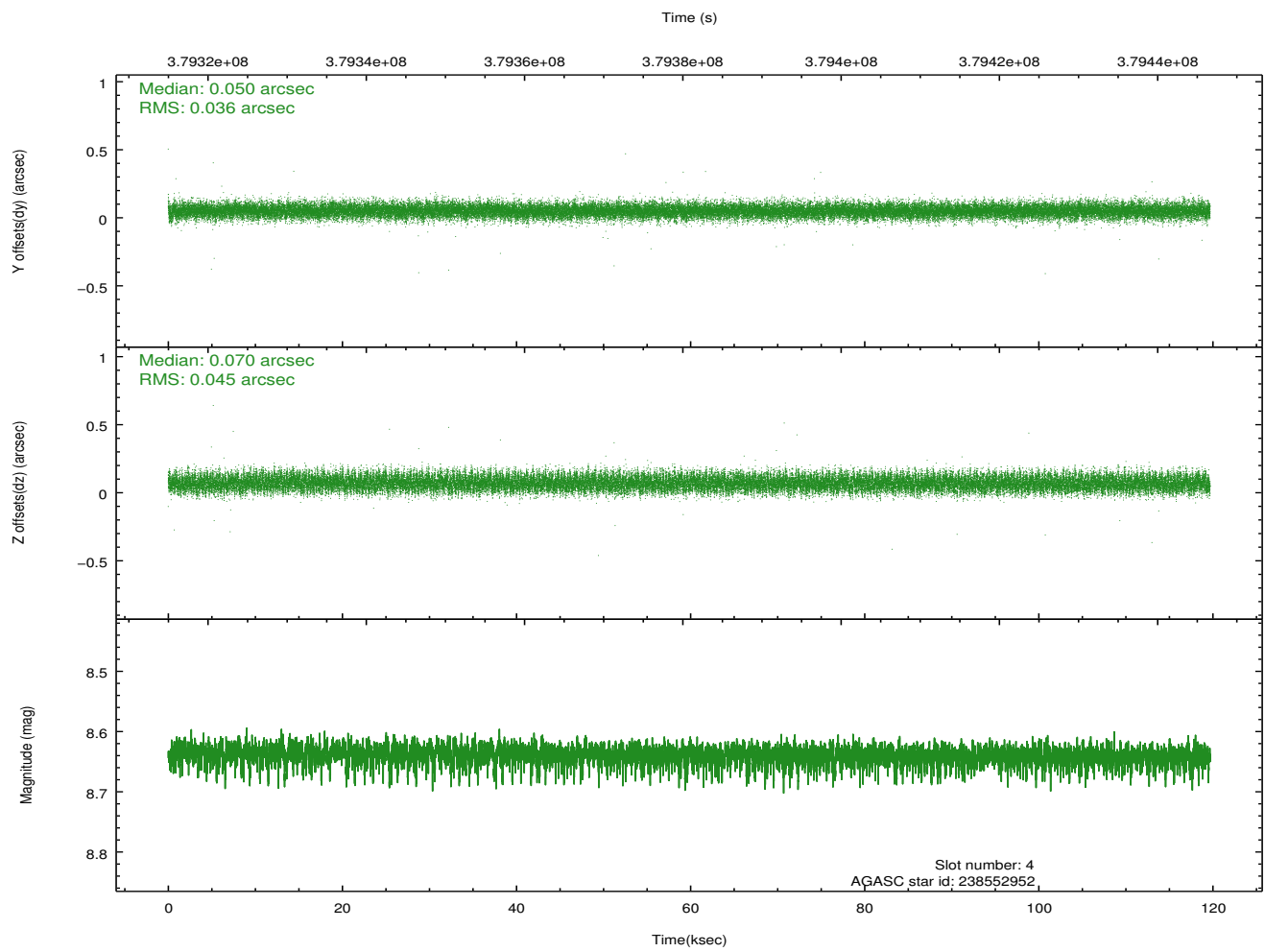
∞

2.4 Star Slots

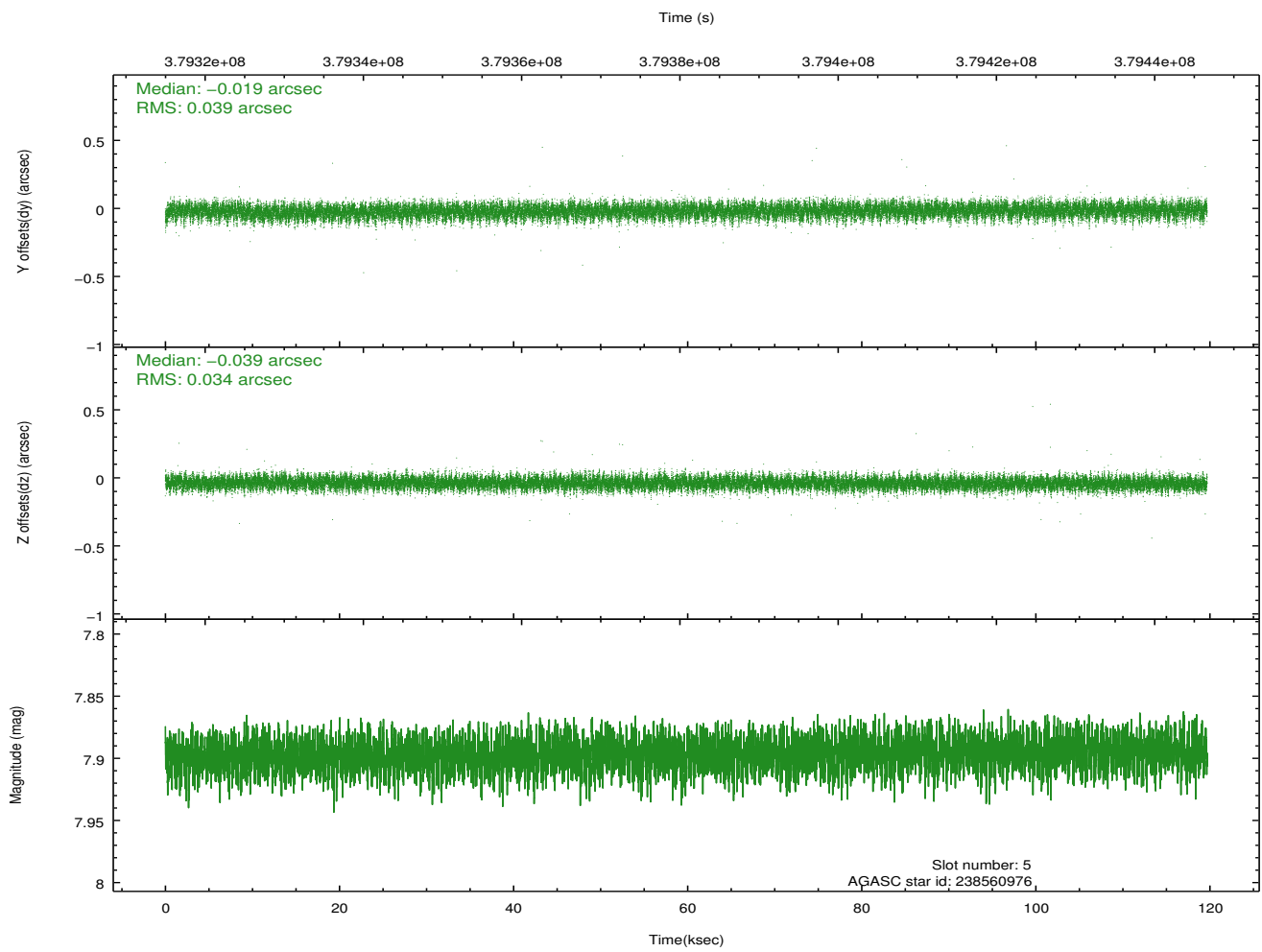
2.4.1 Slot 3



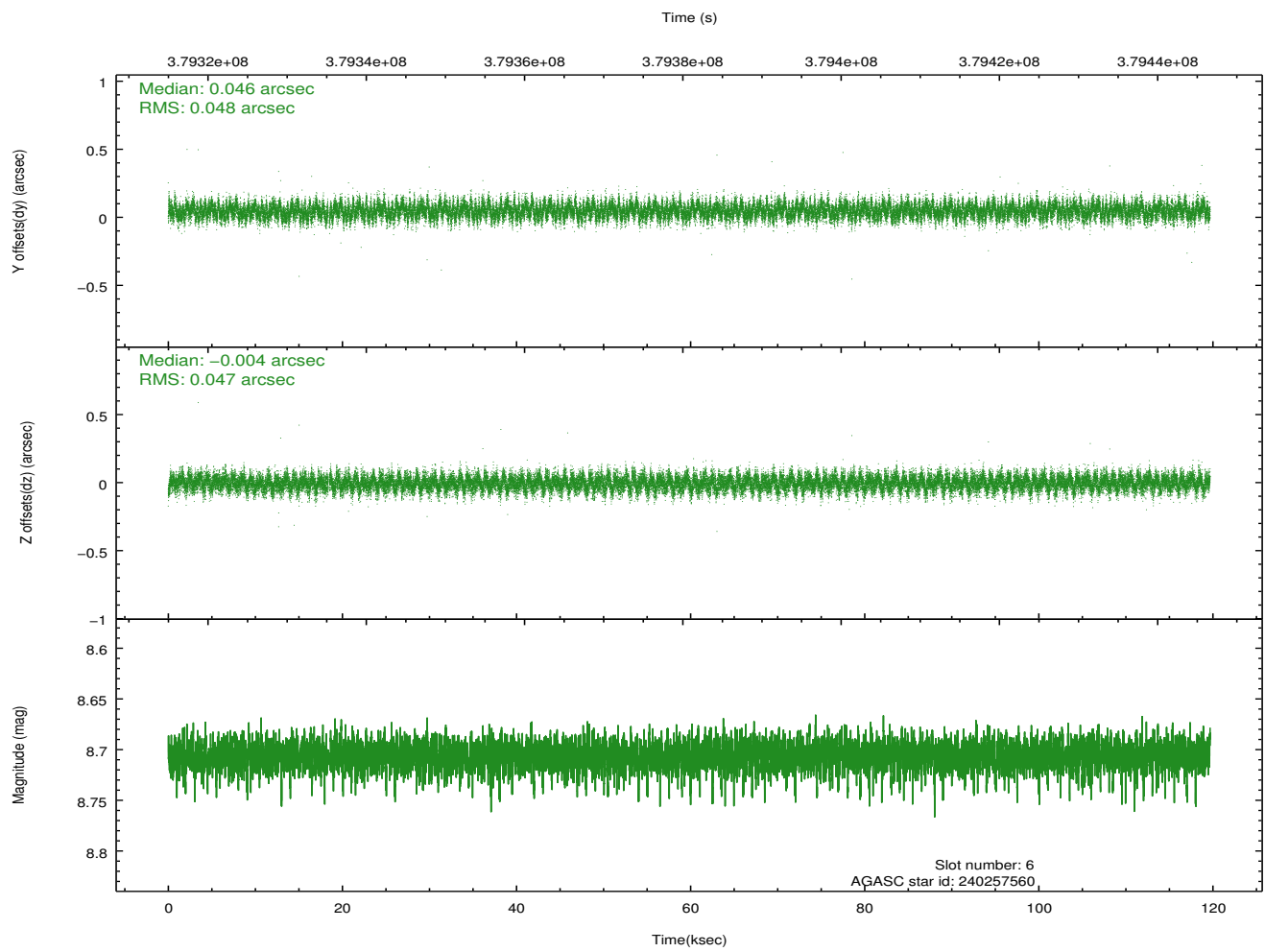
2.4.2 Slot 4



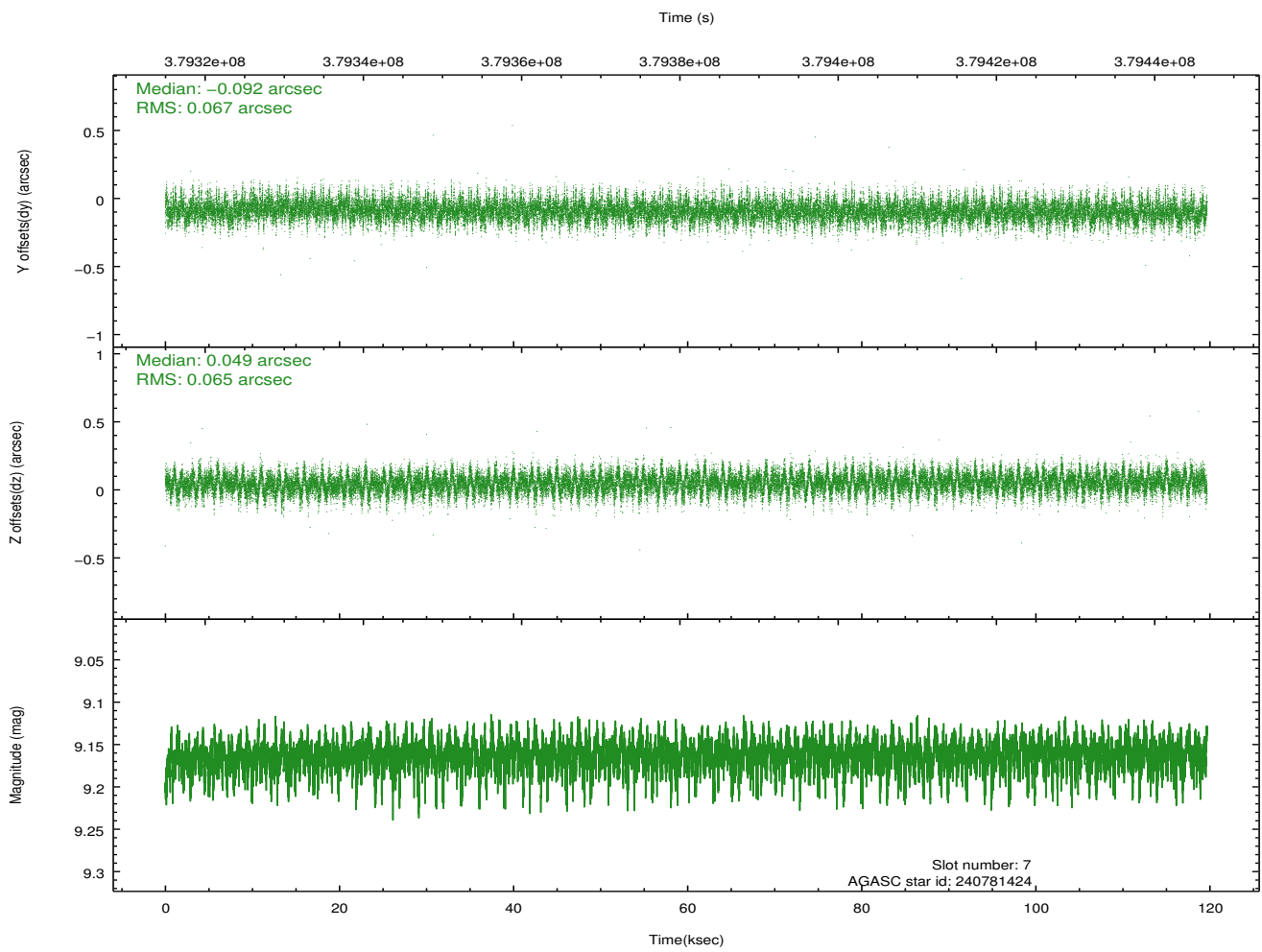
2.4.3 Slot 5



2.4.4 Slot 6

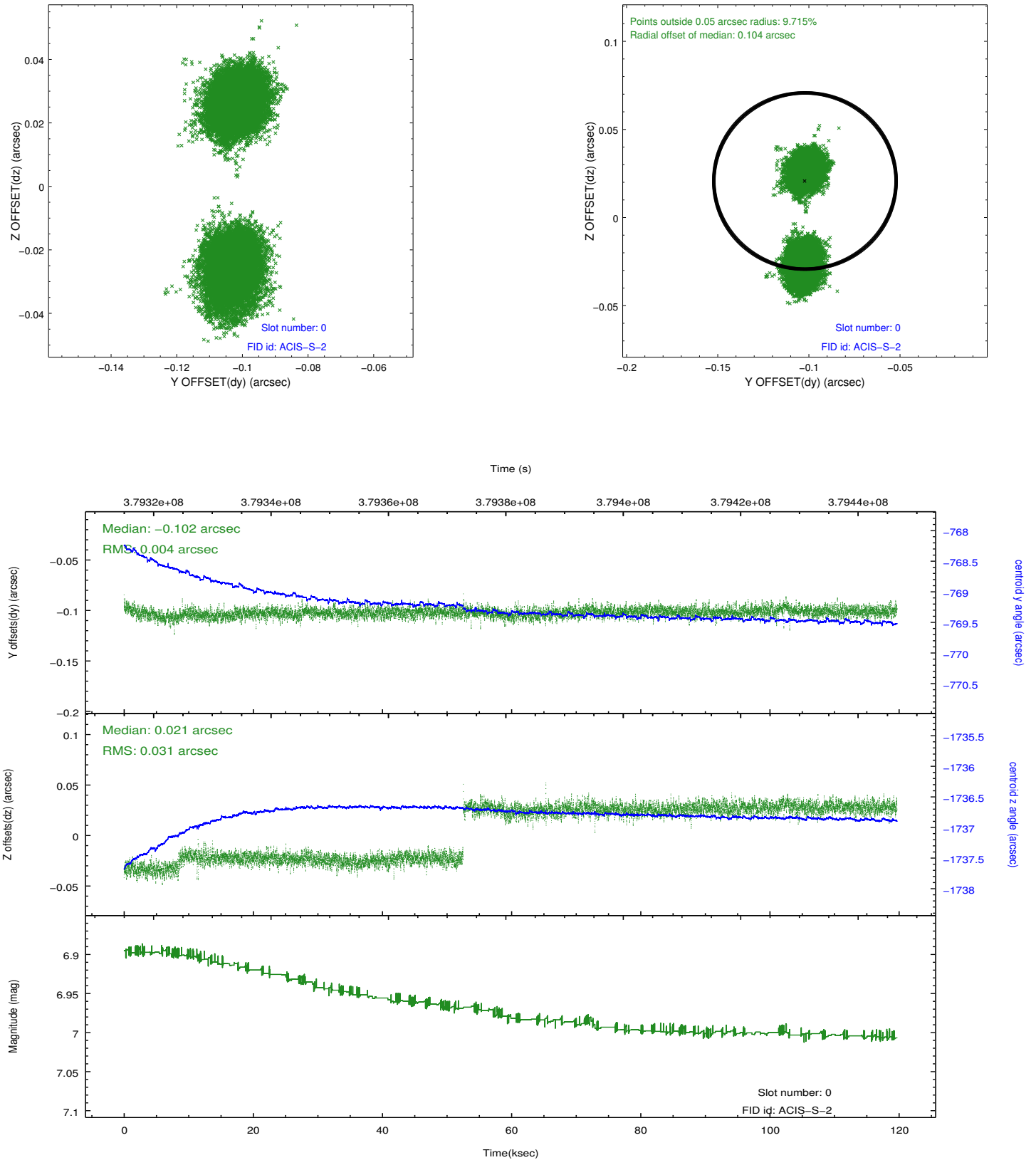


2.4.5 Slot 7

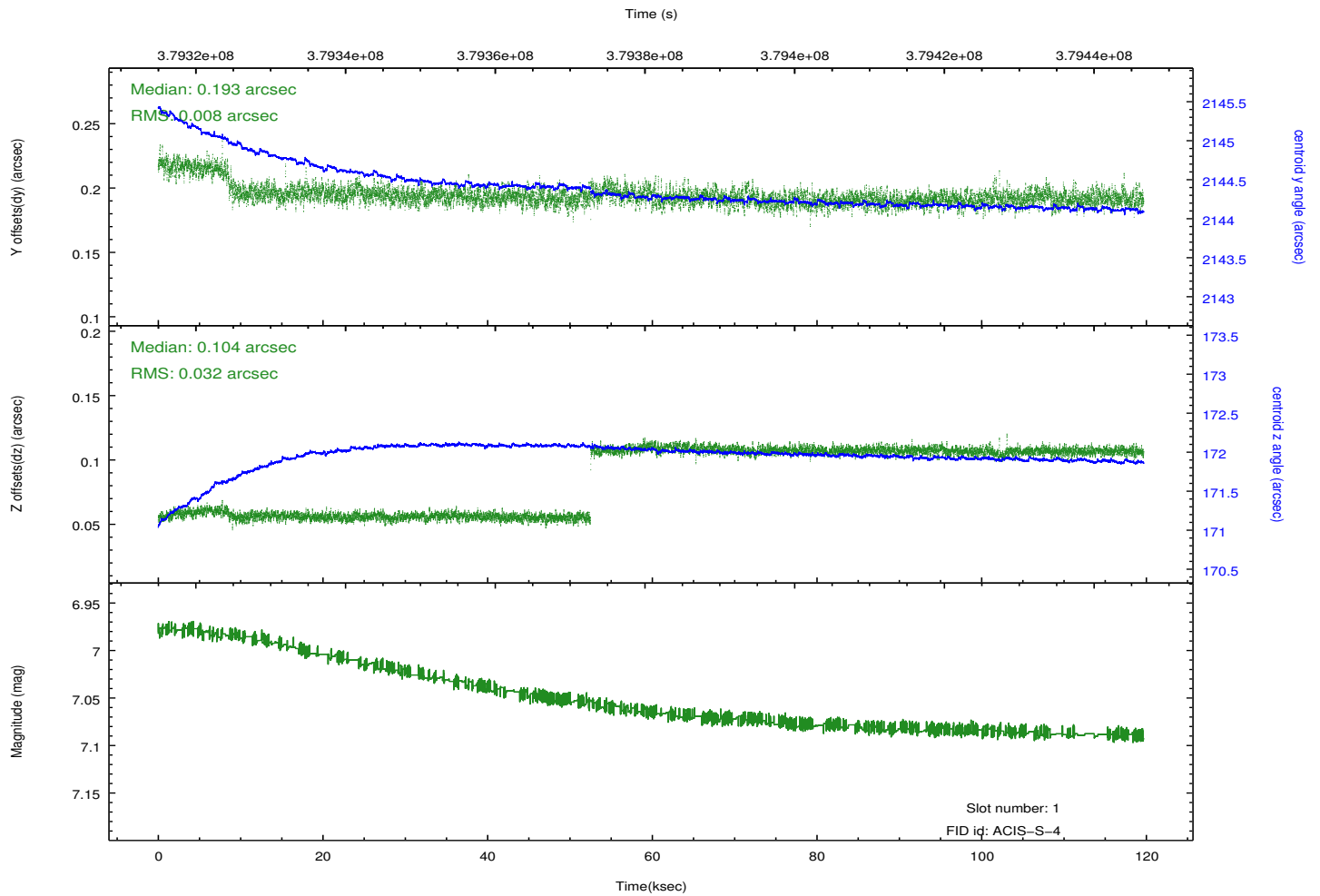
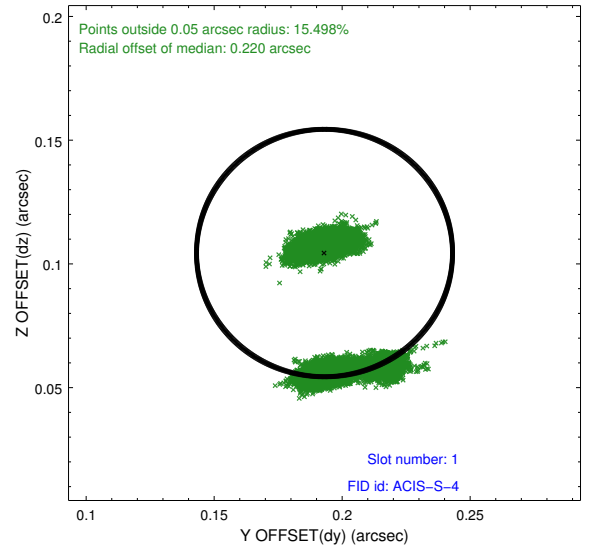
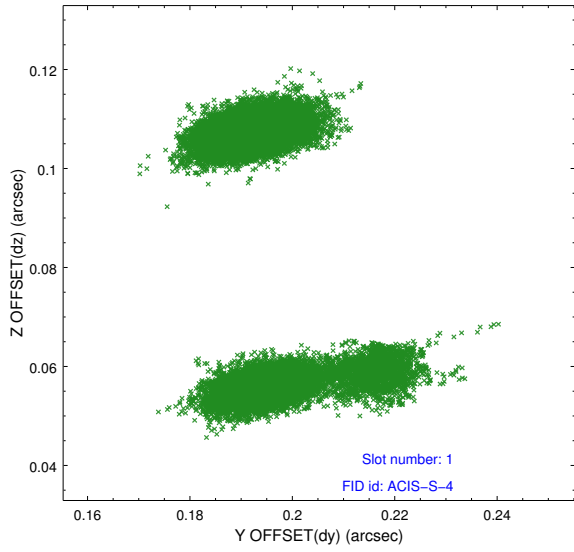


2.5 FID Slots

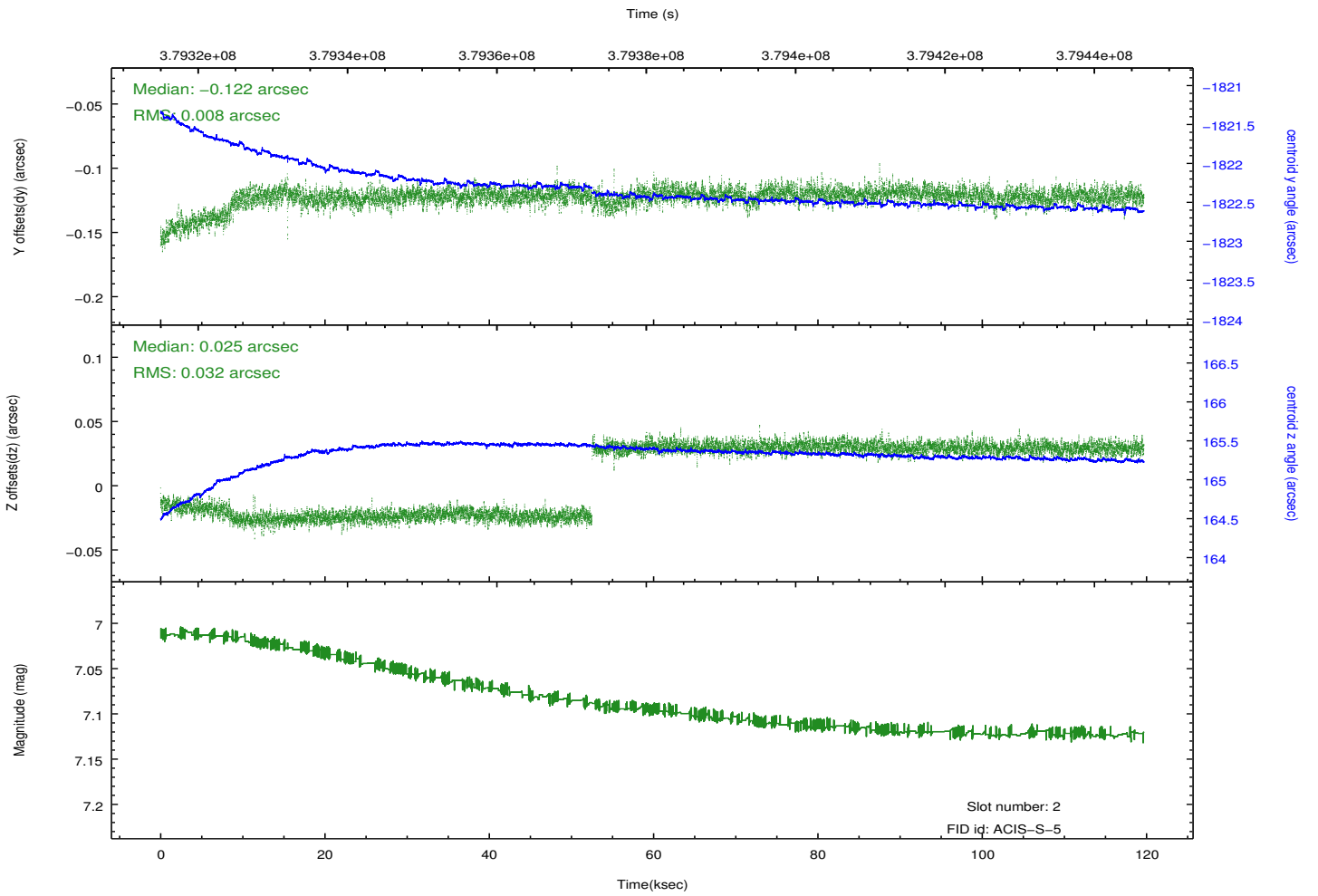
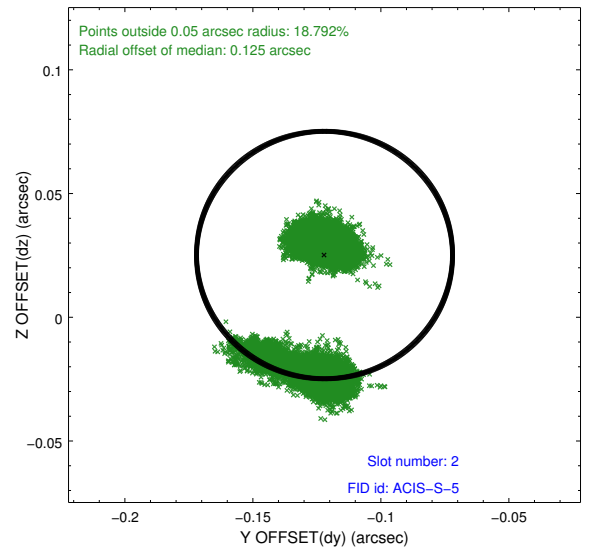
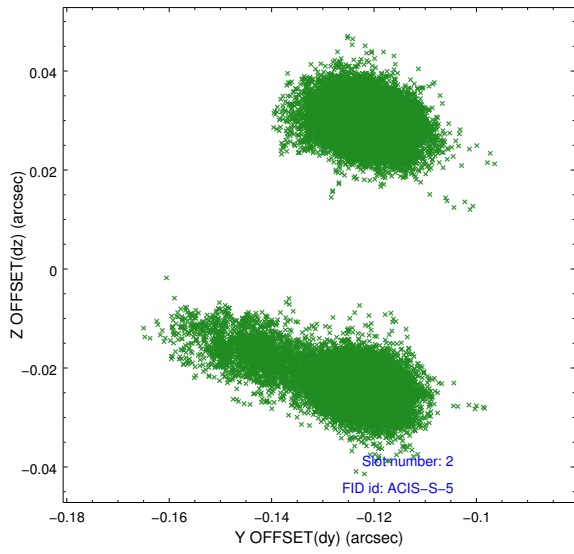
2.5.1 Slot 0



2.5.2 Slot 1



2.5.3 Slot 2



A Summary

A.1 Status

V&V Scientist	Joy Nichols
V&V Date (YYYY-MM-DD)	2013.01.29
V&V Edition	1
V&V Disposition and Status	OK
V&V Charge Time	119.60639955449

A.2 Comments