

V&V Reference Report

L2 ASCDS Version : 8.4.5

Observation 11080 - L2 Version 2
Chandra X-Ray Center

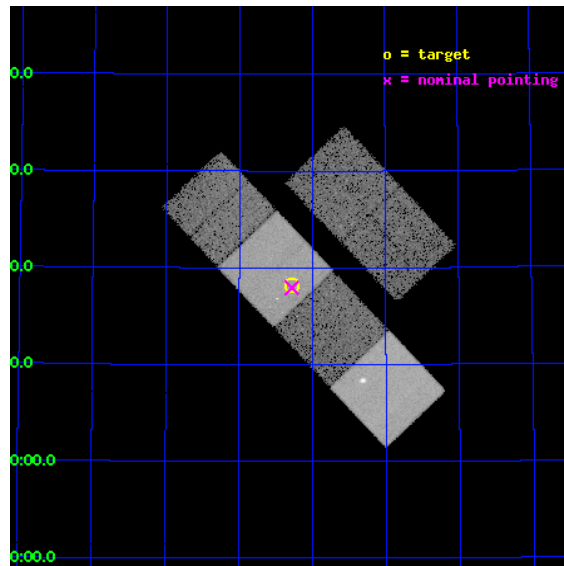
L2 Processing Date : Jun 16 2012

Contents

1	Front	2
2	OBI	3
2.1	OBI	3
2.1.1	Images	3
2.1.2	Bias	3
2.1.3	Parameters	4
2.1.4	Events	4
2.2	Compared Parameters	5
2.3	Aspect	6
2.4	Star Slots	9
2.4.1	Slot 3	9
2.4.2	Slot 4	10
2.4.3	Slot 5	11
2.4.4	Slot 6	12
2.4.5	Slot 7	13
2.5	FID Slots	14
2.5.1	Slot 0	14
2.5.2	Slot 1	15
2.5.3	Slot 2	16
A	Summary	17
A.1	Status	17
A.2	Comments	17

1 Front

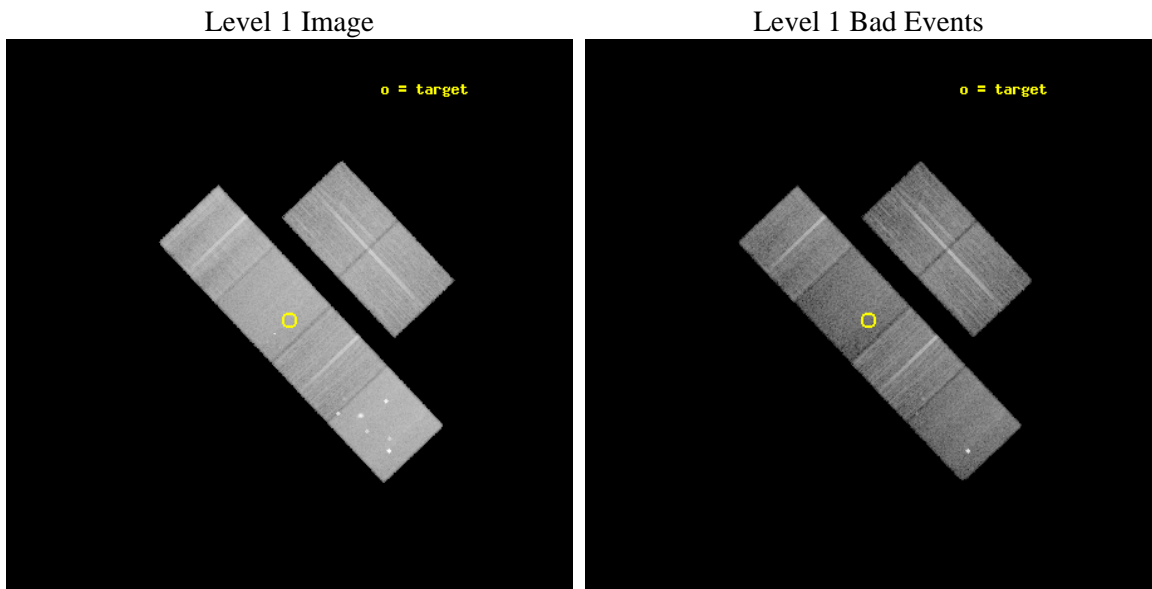
seq_num	401115	Sequence number
obs_id	11080	Observation id
title	X-Ray Binaries In a Nearby Star-Burst Galaxy: A New Lab for Astrophysics.	Proposal title
observer	Dr Silas Laycock	Principal investigator
object	IC 10	Source name
dtcycle	0	
cycle	P	events from which exps? Prim/Second/Both
ra_targ	5.072083	Observer's specified target RA [deg]
dec_targ	59.303778	Observer's specified target Dec [deg]
ra_nom	5.0701205321446	Nominal RA [deg]
dec_nom	59.299007761546	Nominal Dec [deg]
roll_nom	226.53405728667	Nominal Roll [deg]
revision	2	Processing version of data
ontime	15039.999944031	Sum of GTIs [s]
livetime	14849.554408739	Livetime [s]
ontime2	15036.758923709	Sum of GTIs [s]
ontime3	15039.999944031	Sum of GTIs [s]
ontime5	15039.999944031	Sum of GTIs [s]
ontime6	15036.758933604	Sum of GTIs [s]
ontime7	15039.999944031	Sum of GTIs [s]
ontime8	15039.999944031	Sum of GTIs [s]
l2events	204370	Number of level 2 events



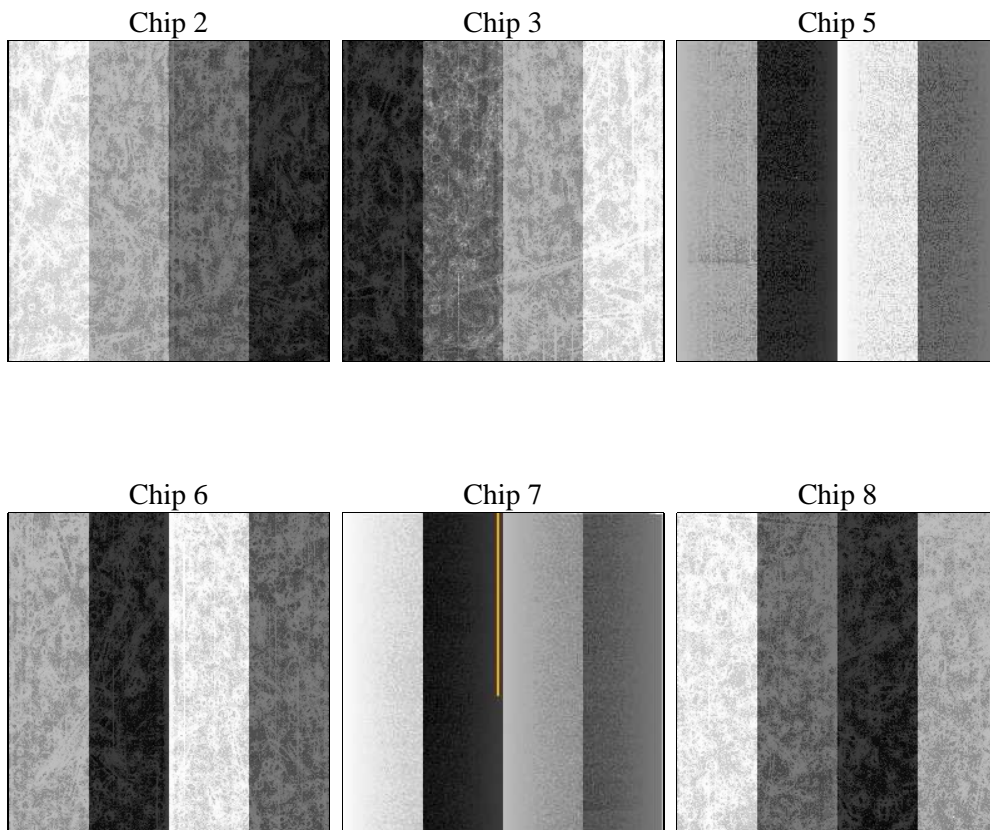
2 OBI

2.1 OBI

2.1.1 Images



2.1.2 Bias



2.1.3 Parameters

obi_num	0	Obi number	sched_exp_time	15000.000000	[s] Scheduled observation exposure time
ascdsver	8.4.5	Processing system revision	ontime	15039.999944031	Sum of GTIs [s]
caldbver	4.4.10	 	ontime2	15036.758923709	Sum of GTIs [s]
date	2012-06-16T02:17:50	Date and time of file creation	ontime3	15039.999944031	Sum of GTIs [s]
revision	2	Processing version of data	ontime5	15039.999944031	Sum of GTIs [s]
			ontime6	15036.758933604	Sum of GTIs [s]
			ontime7	15039.999944031	Sum of GTIs [s]
			ontime8	15039.999944031	Sum of GTIs [s]
			l1events	902787	Number of level 1 events

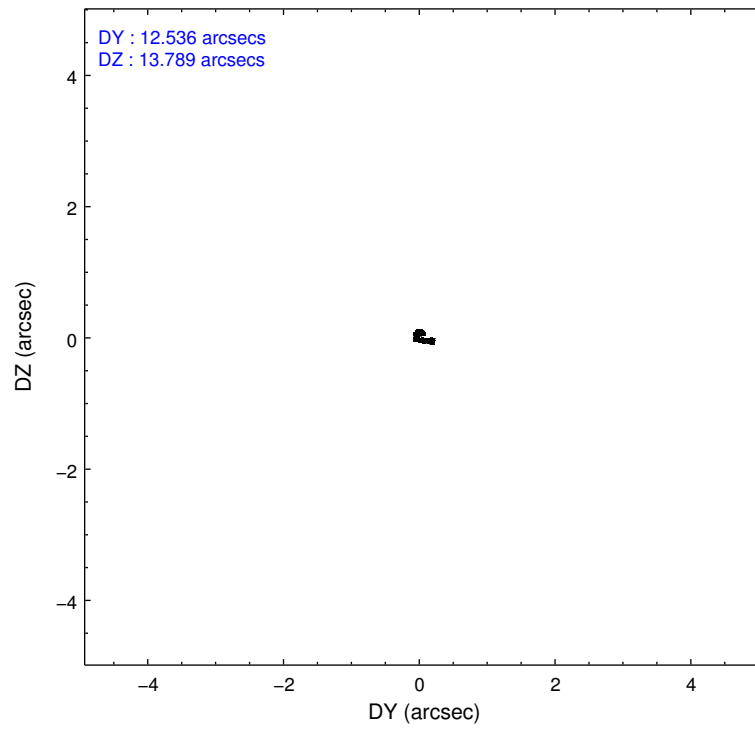
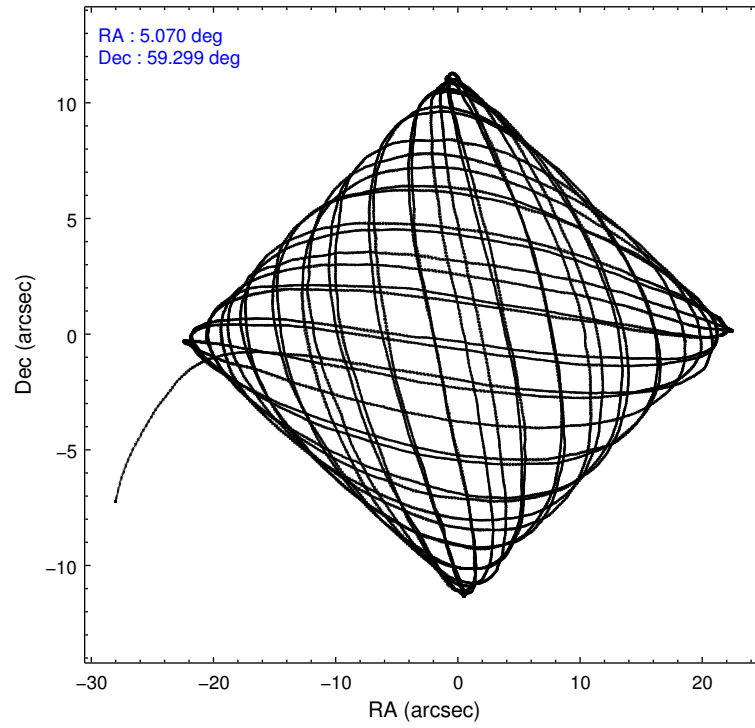
2.1.4 Events

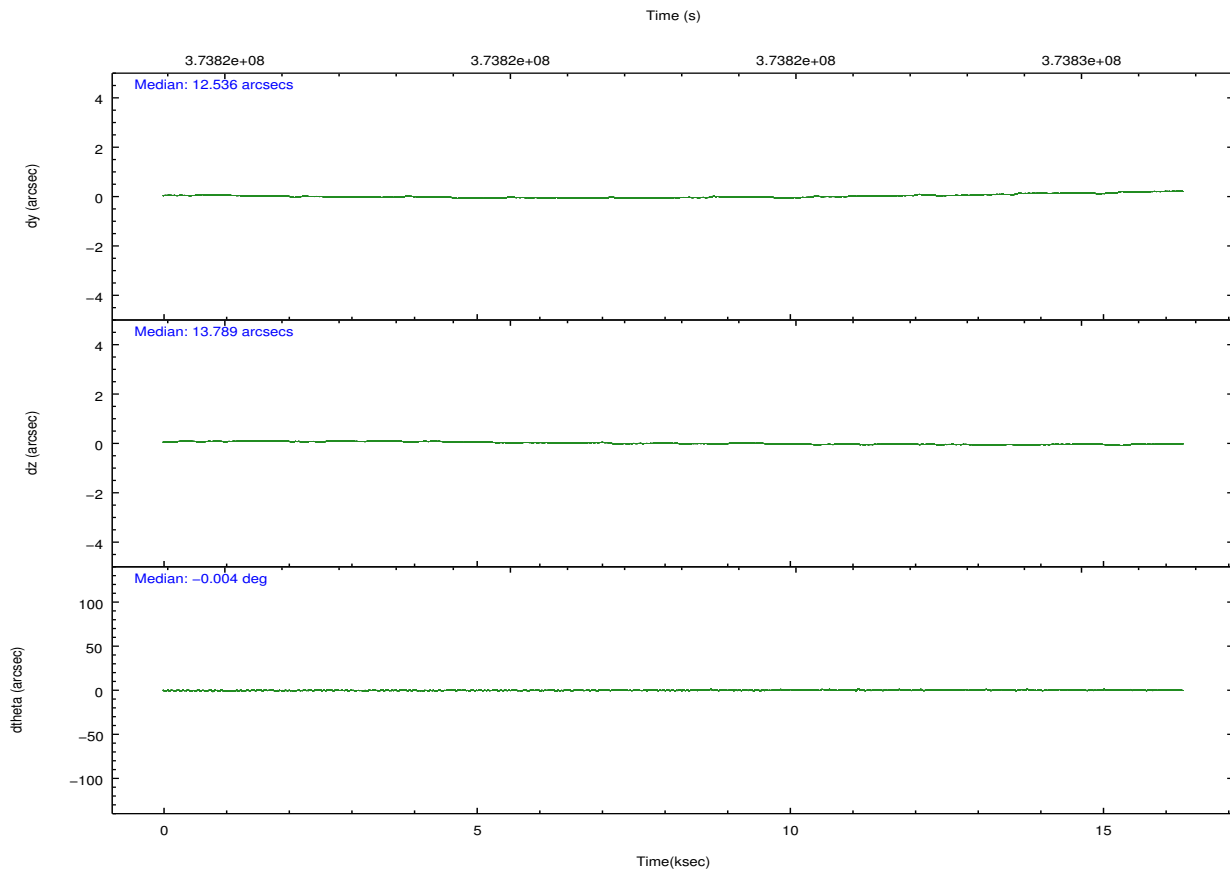
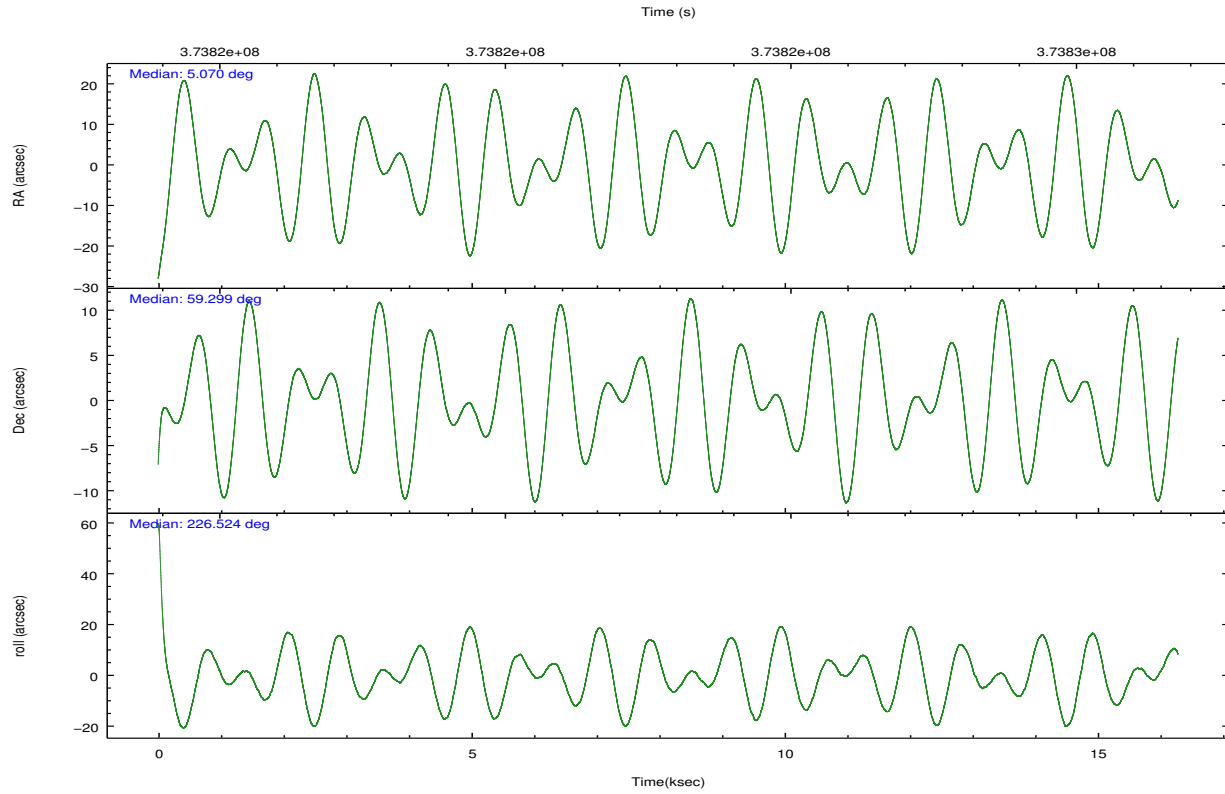
	ccd 2	ccd 3	ccd 5	ccd 6	ccd 7	ccd 8		ccd 2	ccd 3	ccd 5	ccd 6	ccd 7	ccd 8
level 1 events	134203	125340	196105	132219	151337	163583	grade 0 events	4501	4346	12891	4958	6426	12004
rejected events	121338	112977	96301	118386	82615	122529		3%	3%	6%	3%	4%	7%
rejected %	90%	90%	49%	89%	54%	74%	grade 1 events	88	71	955	160	222	153
								0%	0%	0%	0%	0%	0%
							grade 2 events	3067	2681	29942	3034	14070	9636
								2%	2%	15%	2%	9%	5%
							grade 3 events	1386	1452	4150	1470	6107	4358
								1%	1%	2%	1%	4%	2%
							grade 4 events	1446	1324	3914	1428	6175	4069
								1%	1%	1%	1%	4%	2%
							grade 5 events	4741	5267	15921	5462	15645	7916
								3%	4%	8%	4%	10%	4%
							grade 6 events	2468	2562	48925	2946	35969	10993
								1%	2%	24%	2%	23%	6%
							grade 7 events	116506	107637	79407	112761	66723	114454
								86%	85%	40%	85%	44%	69%

2.2 Compared Parameters

Parameter	Planned	Actual	Parameter	Planned	Actual
Instrument	ACIS	ACIS	Obspar format version number	7	7
Detector	ACIS-235678	ACIS-235678	Obspar file type	PREDICTED	ACTUAL
Grating	NONE	NONE	Obspar update status	NONE	UPDATED
Data mode	VFAINT	VFAINT	CCD I0 on	N	N
Observation mode	POINTING	POINTING	CCD I1 on	N	N
[deg] Pointing RA	5.081908	5.070120532144632	CCD I2 on	O2	Y
[deg] Pointing Dec	59.325706	59.29900776154624	CCD I3 on	O3	Y
[deg] Pointing Roll	226.367251	226.5340572866685	CCD S0 on	N	N
[mm] SIM focus pos	-0.684267	-0.6828225247311905	CCD S1 on	O1	Y
[mm] SIM defocus	0	0.001444936568705701	CCD S2 on	O5	Y
[mm] SIM translation stage pos	-190.132523	-190.1400660498719	CCD S3 on	Y	Y
[mm] SIM translation stage offset	0	0.00754346686406393	CCD S4 on	O4	Y
[s] Observation start time (MET)	373815989.184000	373814111.60307	CCD S5 on	N	N
Observation start date	2009-11-05T13:45:23	2009-11-05T13:15:11	Number of optional ACIS chips dropped	0	0
[s] Observation end time (MET)	373830989.184000	373831703.67896	On-chip summing requested	N	N
Observation end date	2009-11-05T17:55:23	2009-11-05T18:08:23	Subarray requested	NONE	NONE
Read mode	TIMED	TIMED	Alternating exposures requested	N	N
			[s] Primary exposure time	0.000000	3.2

2.3 Aspect



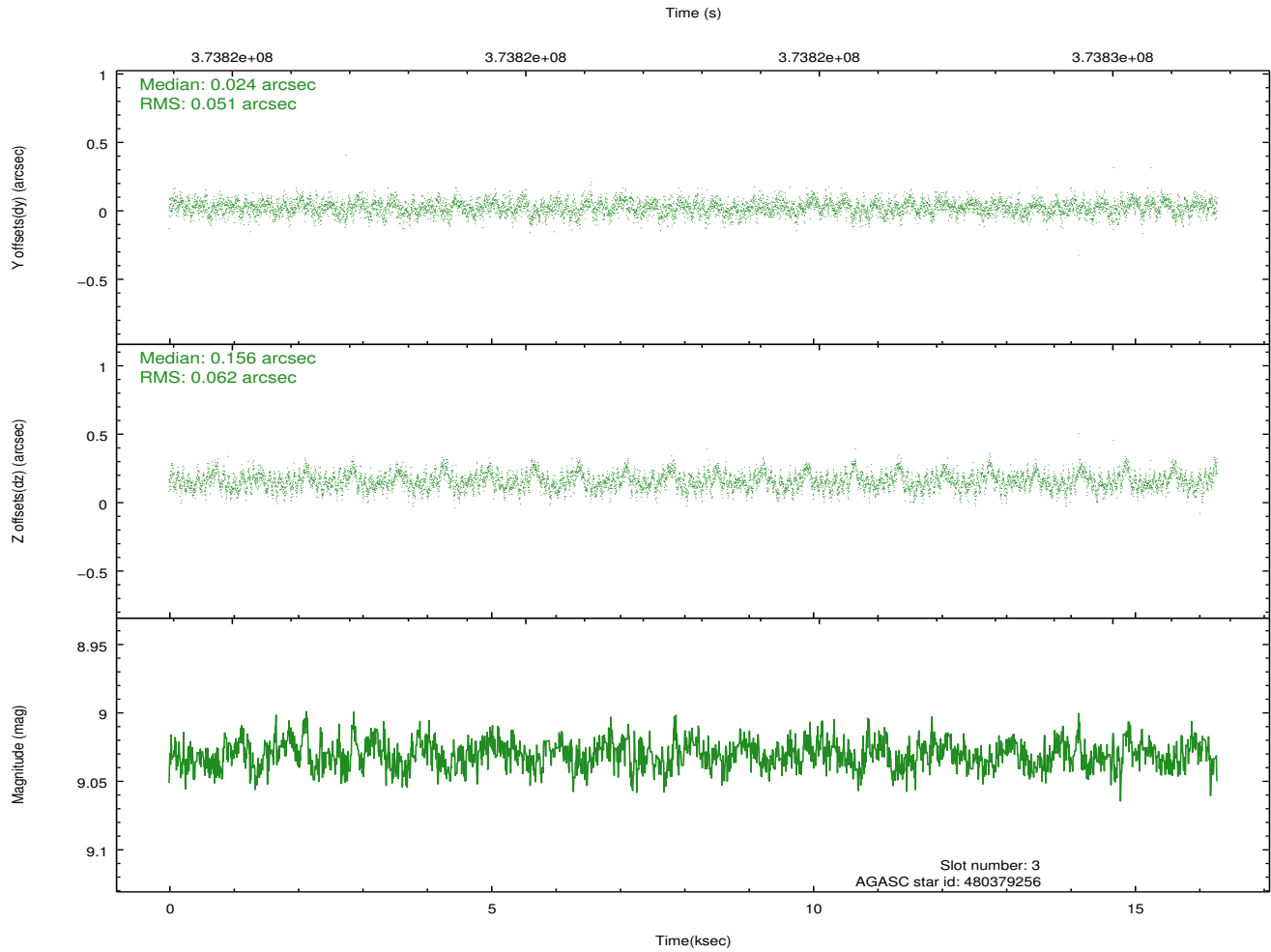
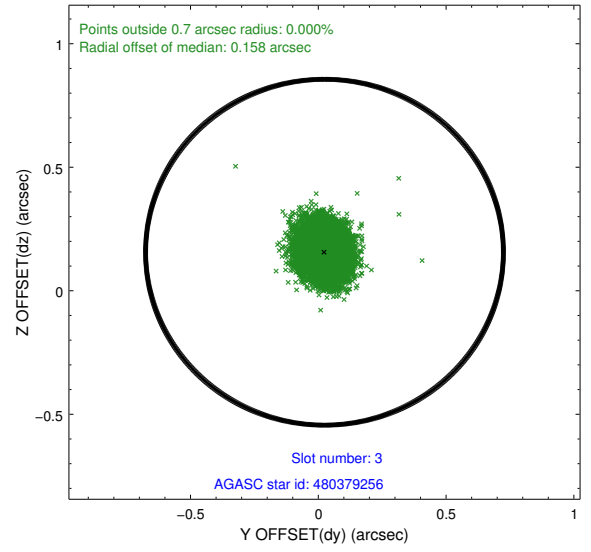
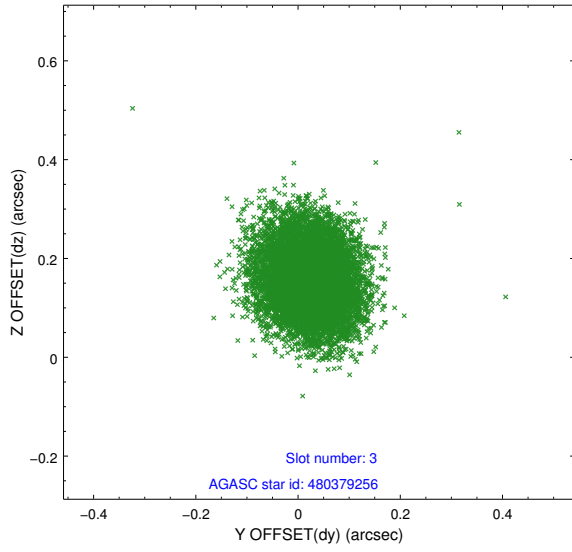


Slot Statistics

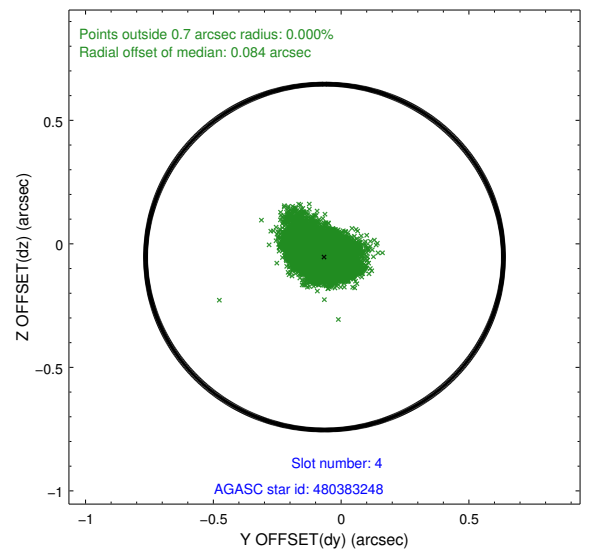
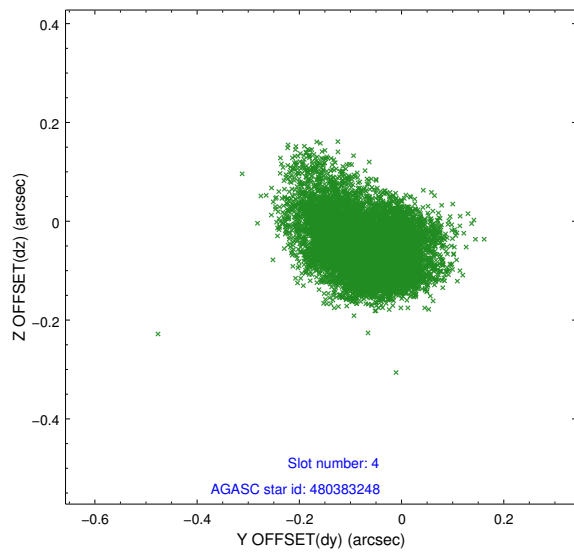
slot	status	id	mag	n_pts	med_dy	med_dz	dr1	dr2	ra	dec	mean_y	mean_z
0	FID	ACIS-S-2	6.89	3971	-0.036	-0.052	0.008	0.015	0.000000	0.000000	-765.49	-1735.20
1	FID	ACIS-S-4	6.98	3972	0.165	0.032	0.008	0.018	0.000000	0.000000	2147.86	173.09
2	FID	ACIS-S-5	7.01	3971	-0.160	0.029	0.007	0.013	0.000000	0.000000	-1818.12	167.06
3	GUIDE	480379256	9.03	7937	0.024	0.156	0.085	0.136	5.631259	59.673209	-1597.23	-142.90
4	GUIDE	480383248	7.62	7941	-0.065	-0.054	0.093	0.154	4.828098	59.139041	809.07	124.23
5	GUIDE	480387560	8.63	7940	0.080	-0.070	0.084	0.136	3.486116	59.428342	1724.18	-2393.24
6	GUIDE	480388568	8.32	7938	-0.008	0.046	0.099	0.153	3.952528	59.440255	1115.98	-1792.54
7	GUIDE	480388656	8.90	7913	-0.024	-0.080	0.088	0.141	6.593066	59.181927	-1571.40	2352.16

2.4 Star Slots

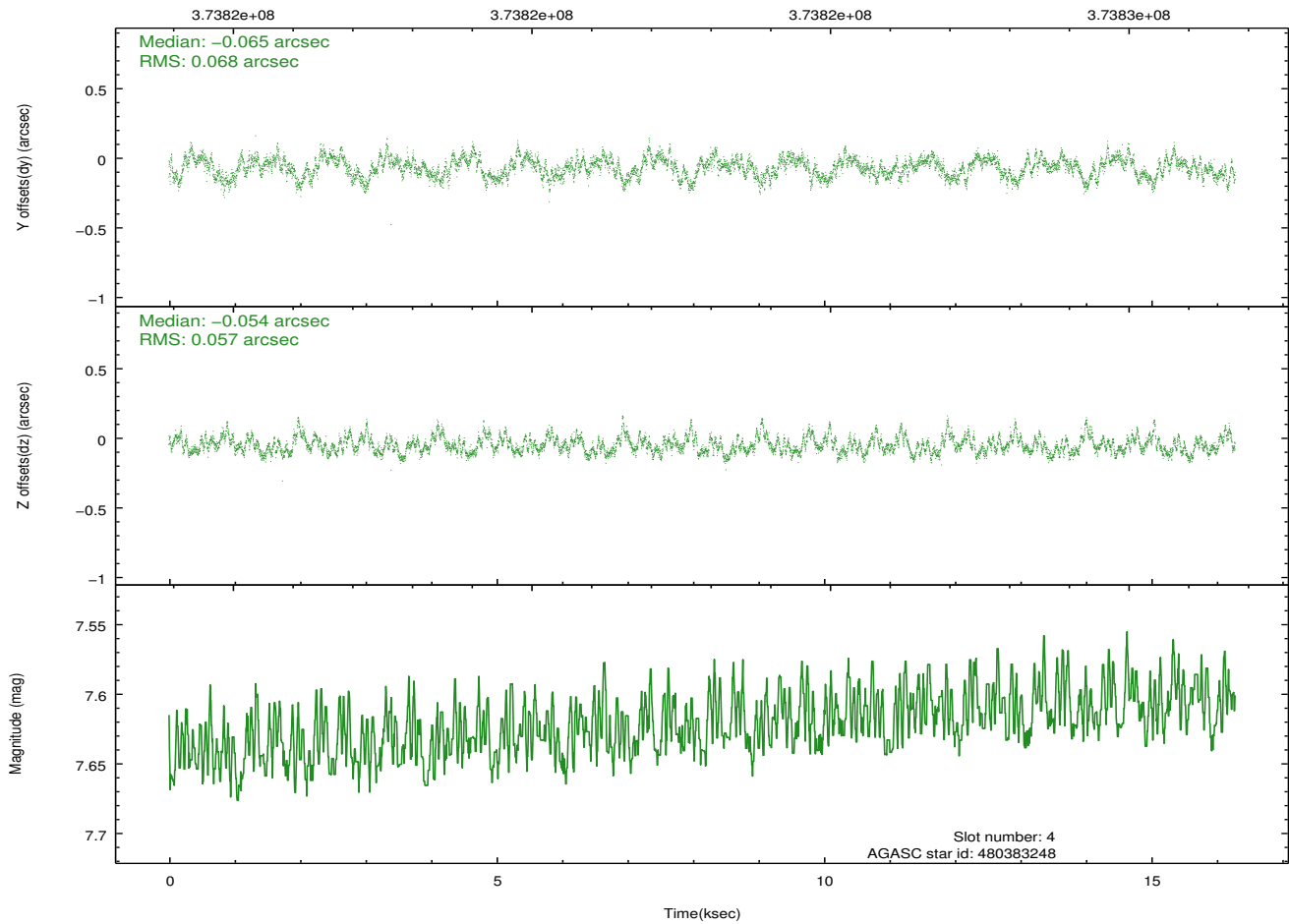
2.4.1 Slot 3



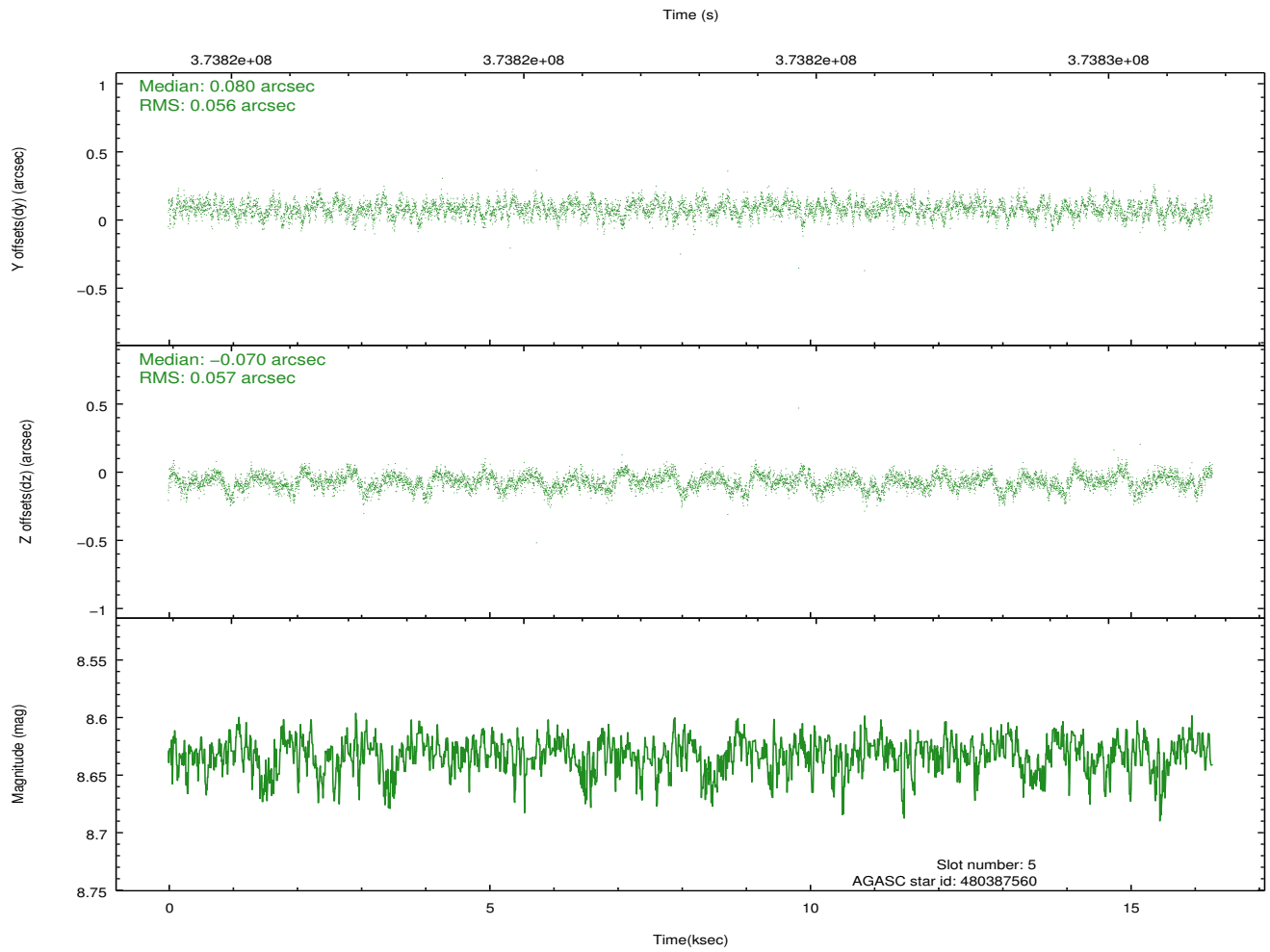
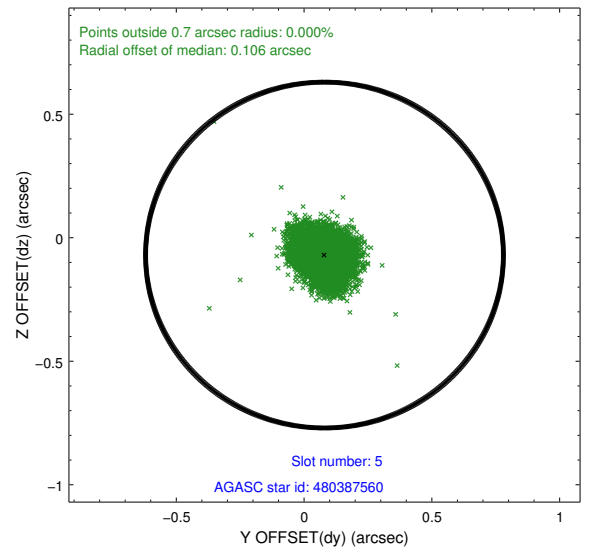
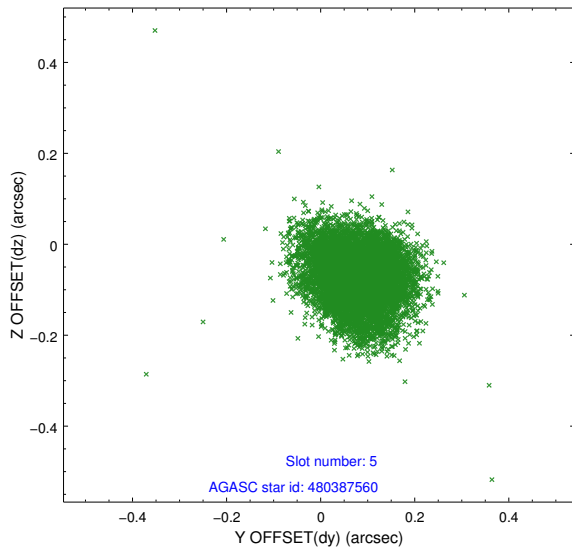
2.4.2 Slot 4



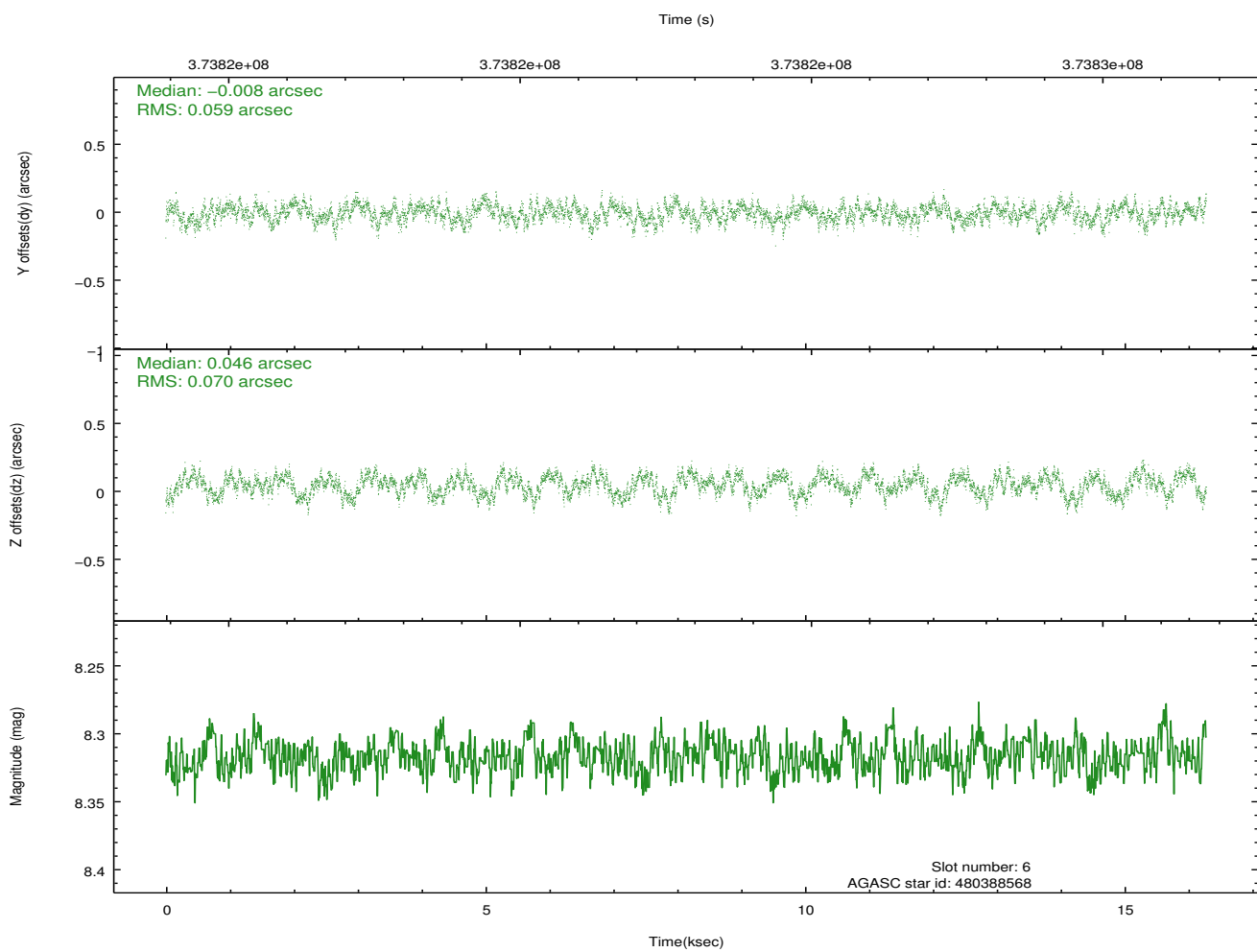
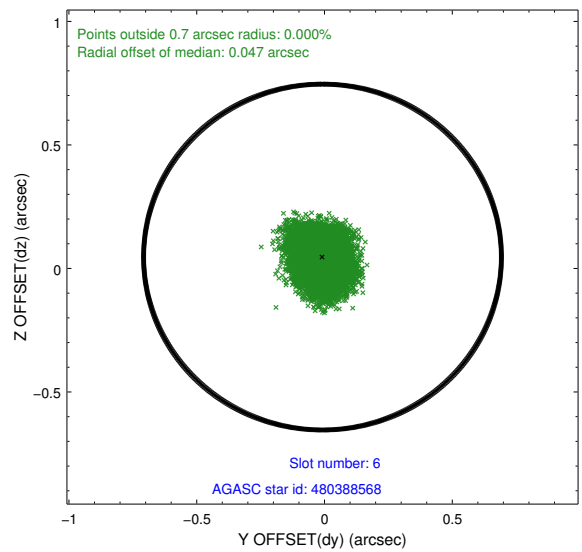
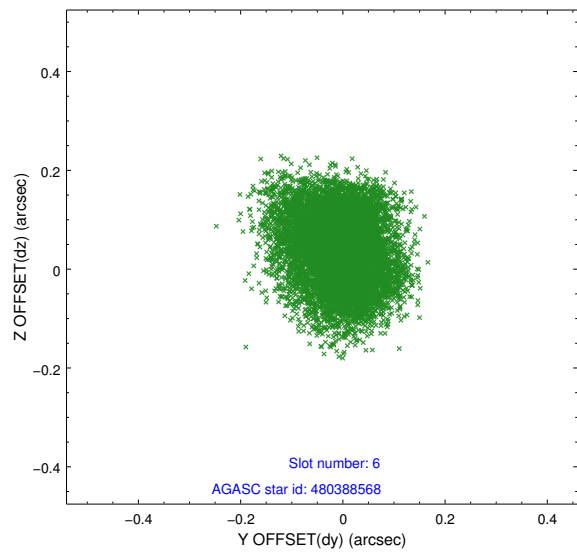
Time (s)



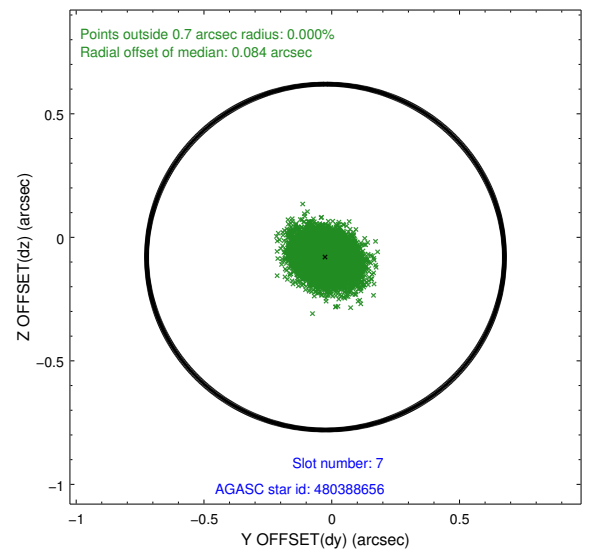
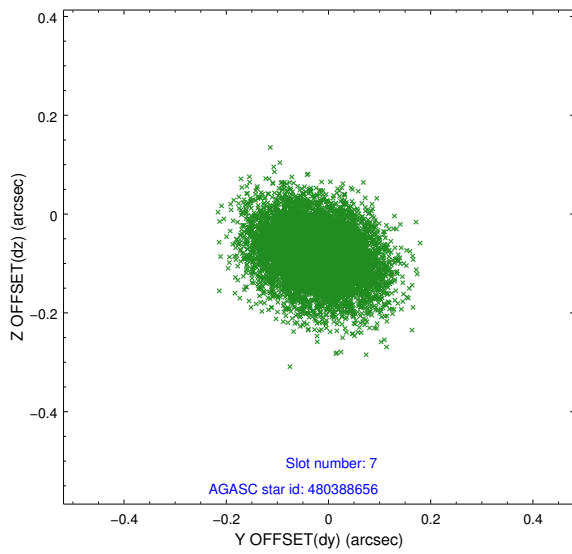
2.4.3 Slot 5



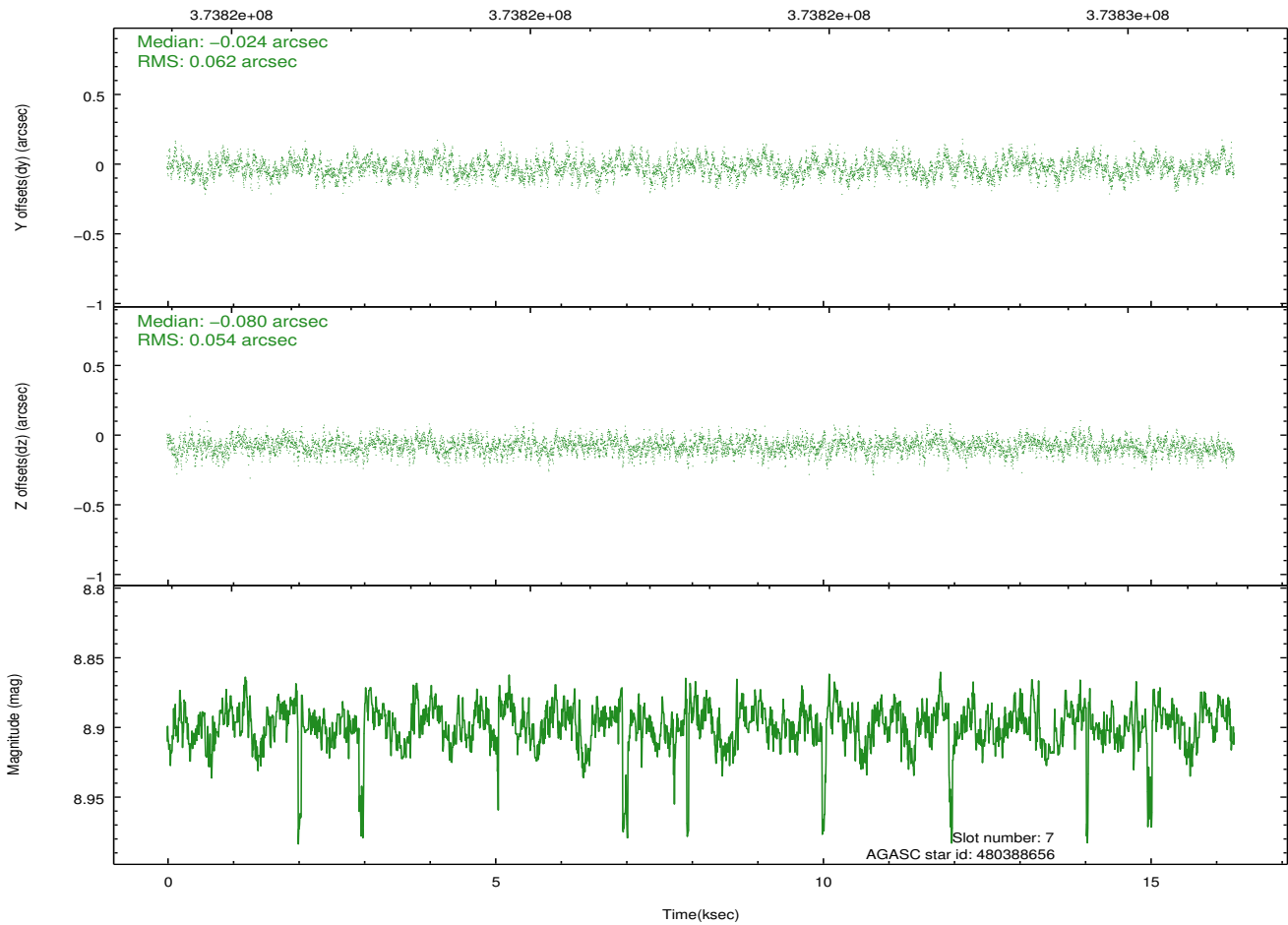
2.4.4 Slot 6



2.4.5 Slot 7

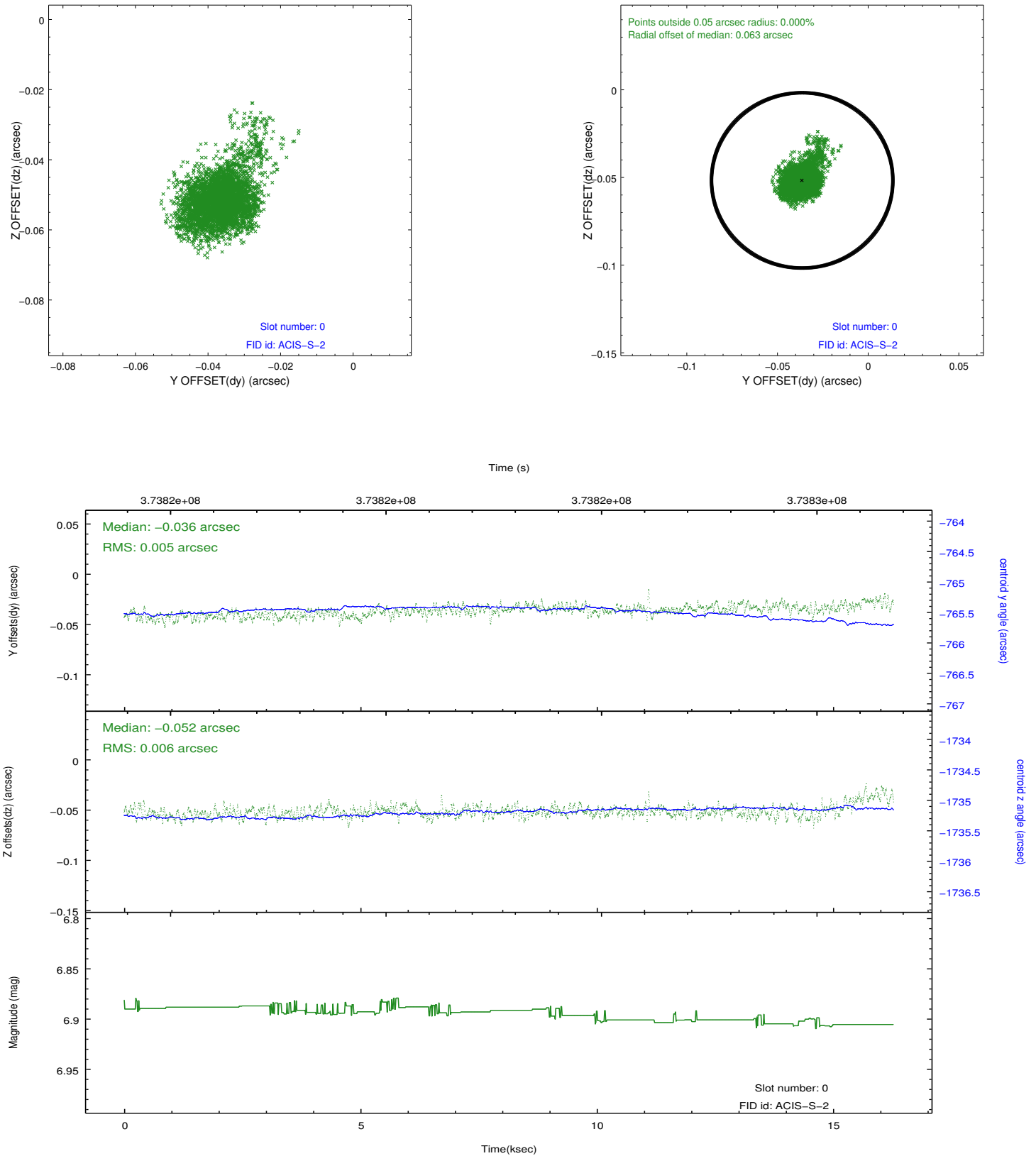


Time (s)

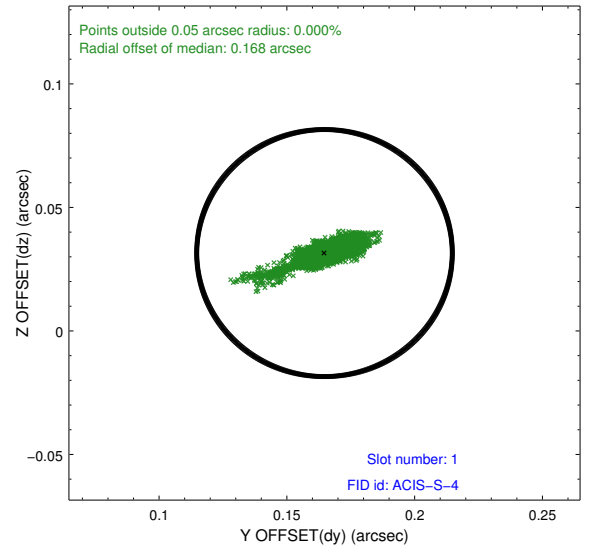
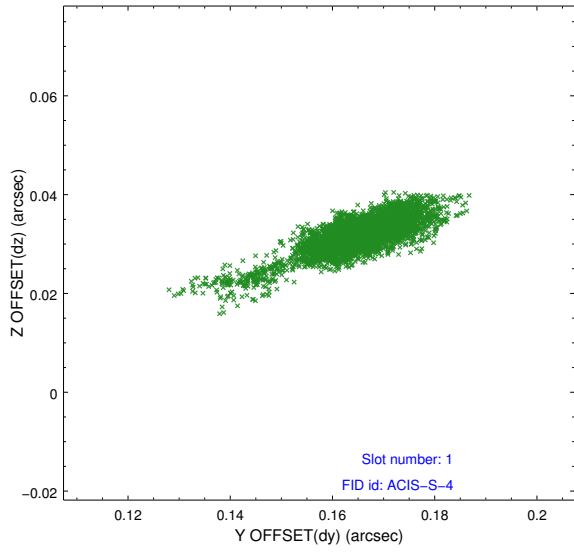


2.5 FID Slots

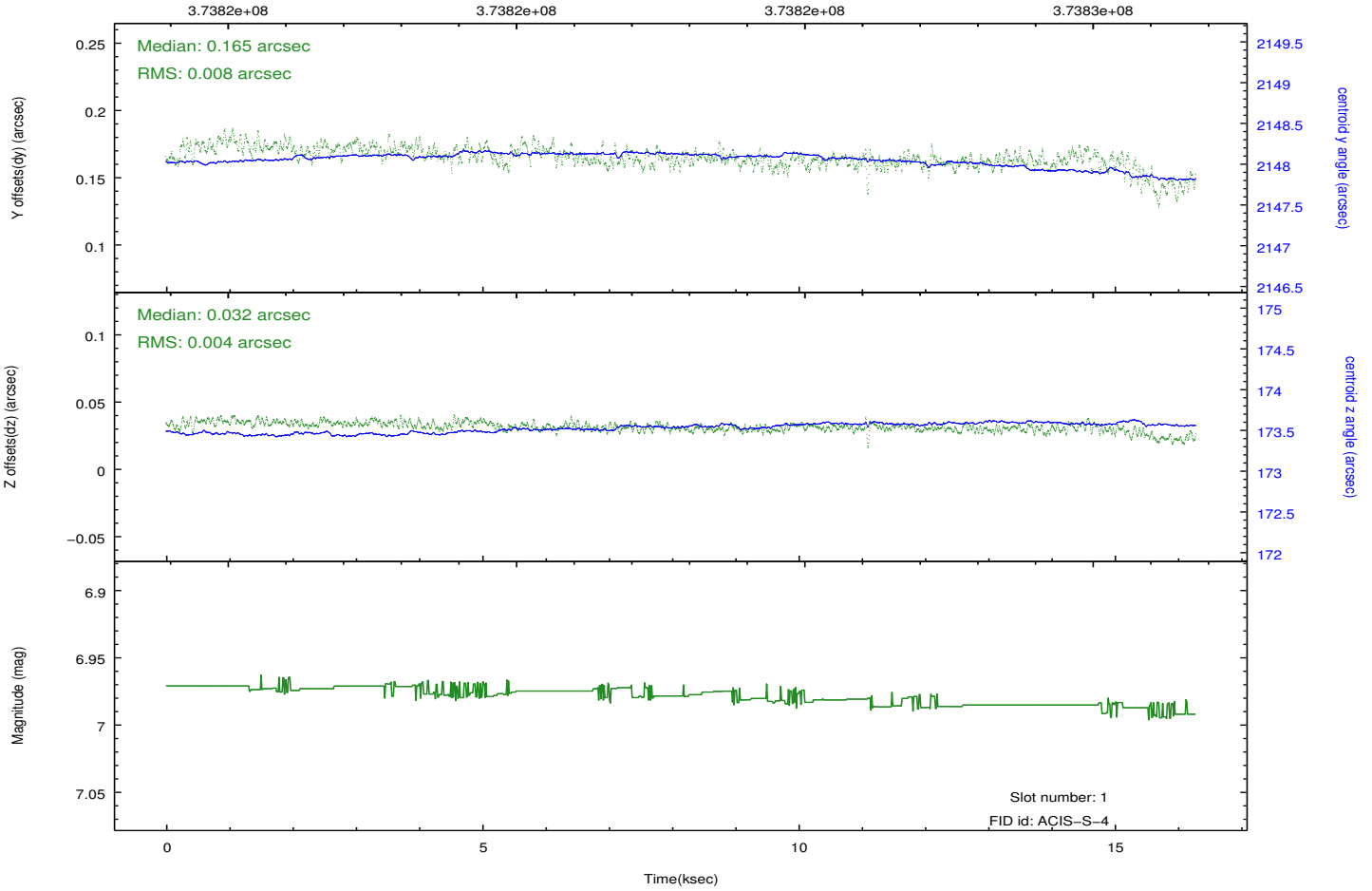
2.5.1 Slot 0



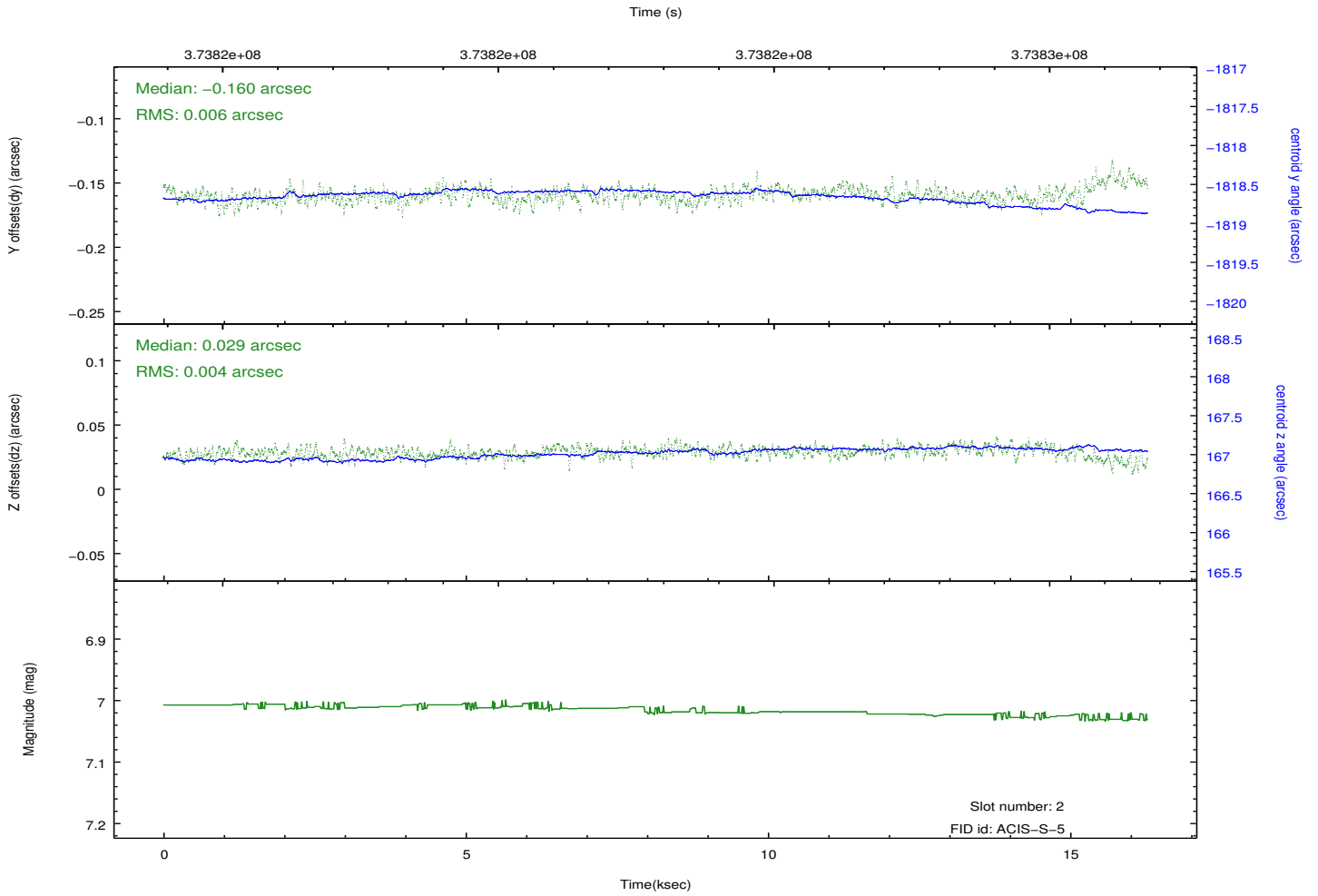
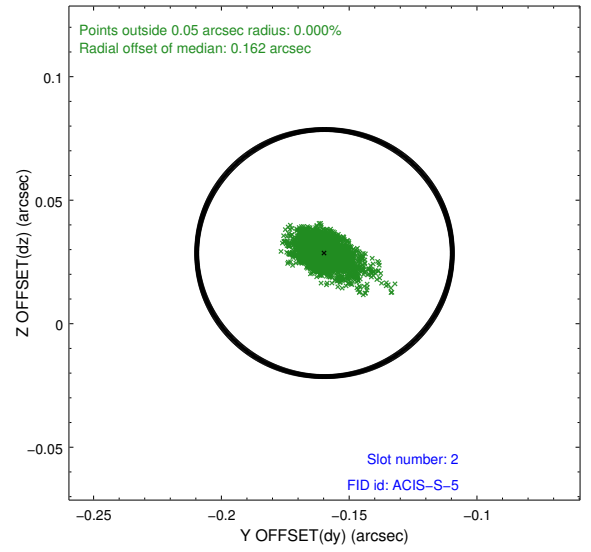
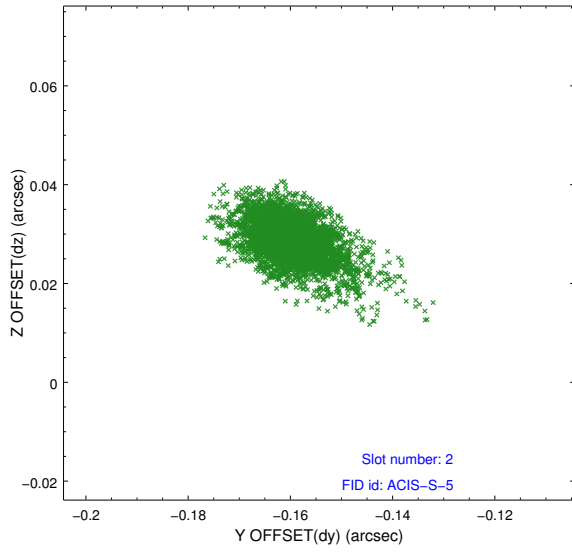
2.5.2 Slot 1



Time (s)



2.5.3 Slot 2



A Summary

A.1 Status

V&V Scientist	Jen Lauer
V&V Date (YYYY-MM-DD)	2012.06.20
V&V Edition	1
V&V Disposition and Status	OK
V&V Charge Time	15.039117275357

A.2 Comments