

V&V Reference Report

L2 ASCDS Version : 8.4.3

Observation 11270 - L2 Version 2
Chandra X-Ray Center

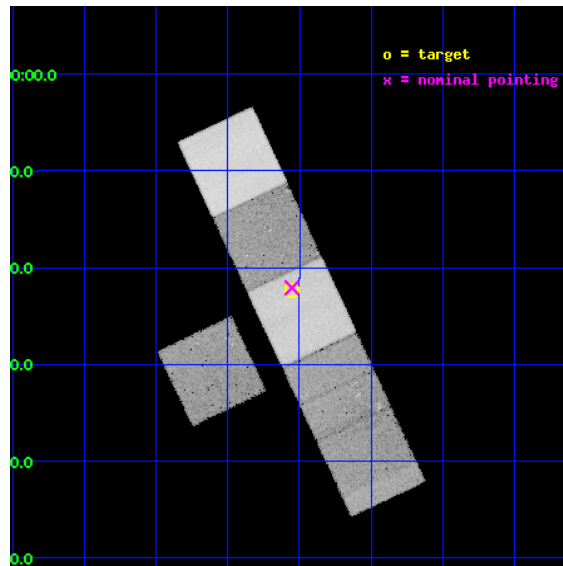
L2 Processing Date : Feb 2 2012

Contents

1	Front	2
2	OBI	3
2.1	OBI	3
2.1.1	Images	3
2.1.2	Bias	3
2.1.3	Parameters	4
2.1.4	Events	4
2.2	Compared Parameters	5
2.3	Aspect	6
2.4	Star Slots	9
2.4.1	Slot 3	9
2.4.2	Slot 4	10
2.4.3	Slot 5	11
2.4.4	Slot 6	12
2.4.5	Slot 7	13
2.5	FID Slots	14
2.5.1	Slot 0	14
2.5.2	Slot 1	15
2.5.3	Slot 2	16
A	Summary	17
A.1	Status	17
A.2	Comments	17

1 Front

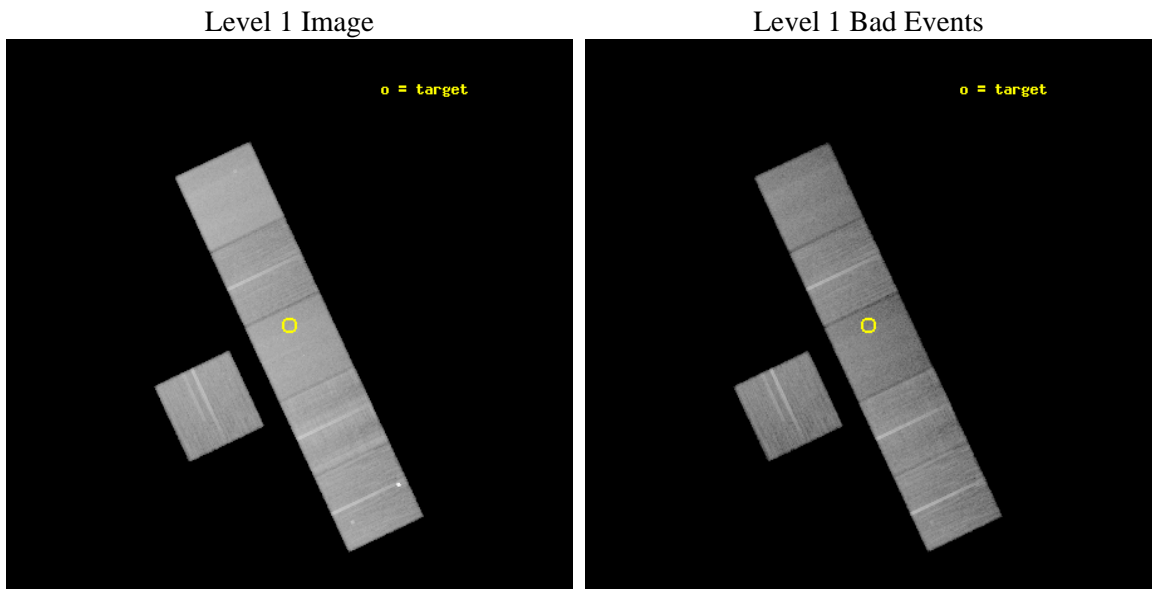
seq_num	600789	Sequence number
obs_id	11270	Observation id
title	X-Rays from Blue Compact Dwarf Galaxies	Proposal title
observer	Prof. Philip Kaaret	Principal investigator
object	UM 461	Source name
dtycycle	0	
cycle	P	events from which exps? Prim/Second/Both
ra_targ	177.88875	Observer's specified target RA [deg]
dec_targ	-2.372778	Observer's specified target Dec [deg]
ra_nom	177.88819964288	Nominal RA [deg]
dec_nom	-2.367977285974	Nominal Dec [deg]
roll_nom	64.834280106169	Nominal Roll [deg]
revision	2	Processing version of data
ontime	35358.696906149	Sum of GTIs [s]
livetime	34910.963795473	Livetime [s]
ontime3	35358.573786139	Sum of GTIs [s]
ontime5	35358.655866146	Sum of GTIs [s]
ontime6	35358.614826143	Sum of GTIs [s]
ontime7	35358.696906149	Sum of GTIs [s]
ontime8	35358.532746136	Sum of GTIs [s]
ontime9	35358.737946153	Sum of GTIs [s]
l2events	418511	Number of level 2 events



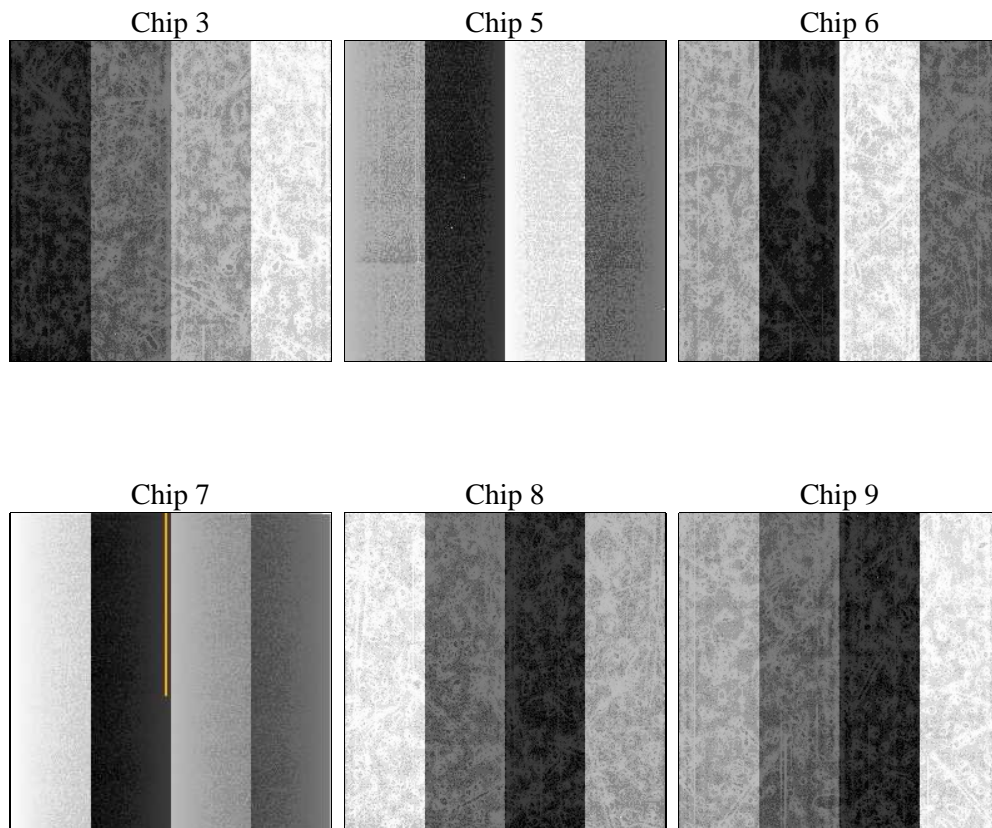
2 OBI

2.1 OBI

2.1.1 Images



2.1.2 Bias



2.1.3 Parameters

obi_num	0	Obi number	sched_exp_time	35400.000000	[s] Scheduled observation exposure time
ascdsver	8.4.3	Processing system revision	ontime	35358.696906149	Sum of GTIs [s]
caldbver	4.4.7	 	ontime3	35358.573786139	Sum of GTIs [s]
date	2012-02-02T23:59:38	Date and time of file creation	ontime5	35358.655866146	Sum of GTIs [s]
revision	2	Processing version of data	ontime6	35358.614826143	Sum of GTIs [s]
			ontime7	35358.696906149	Sum of GTIs [s]
			ontime8	35358.532746136	Sum of GTIs [s]
			ontime9	35358.737946153	Sum of GTIs [s]
			l1events	1800279	Number of level 1 events

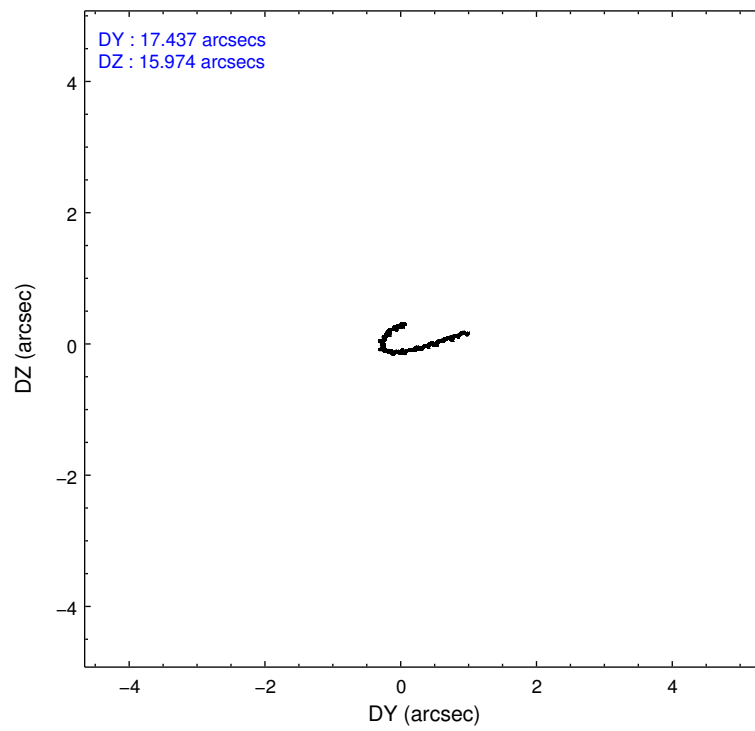
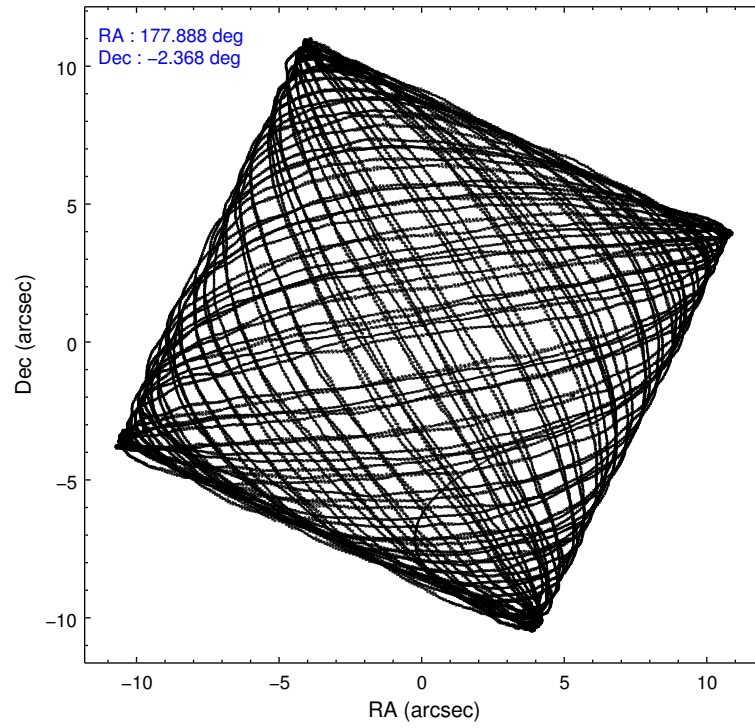
2.1.4 Events

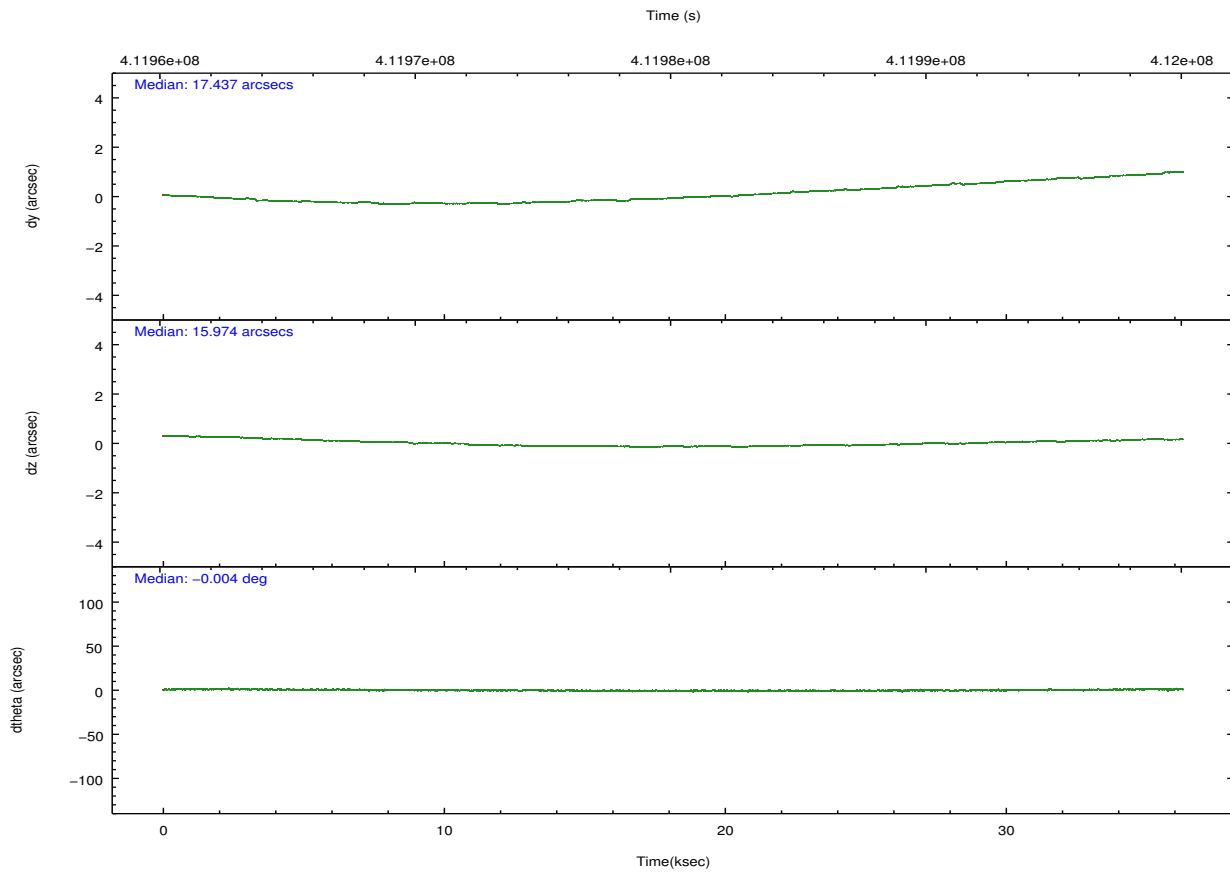
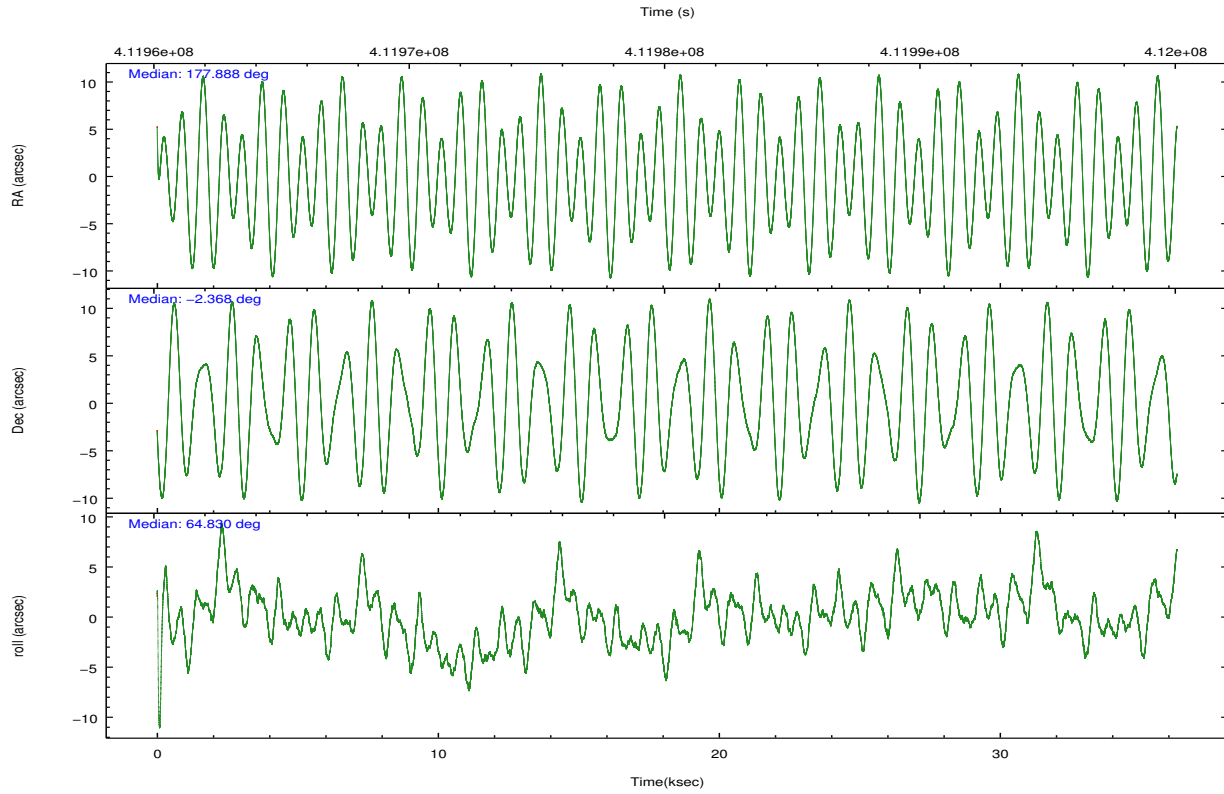
	ccd 3	ccd 5	ccd 6	ccd 7	ccd 8	ccd 9		ccd 3	ccd 5	ccd 6	ccd 7	ccd 8	ccd 9
level 1 events	245106	377594	258374	312789	327203	279213	grade 0 events	9142	11045	9950	12199	24173	21332
rejected events	219078	196079	229566	173429	243387	237436		3%	2%	3%	3%	7%	7%
rejected %	89%	51%	88%	55%	74%	85%	grade 1 events	162	672	115	407	256	213
								0%	0%	0%	0%	0%	0%
							grade 2 events	5675	55870	6535	28377	19988	7455
								2%	14%	2%	9%	6%	2%
							grade 3 events	2971	6831	2960	12263	8884	3172
								1%	1%	1%	3%	2%	1%
							grade 4 events	2894	6623	2991	12016	8233	3214
								1%	1%	1%	3%	2%	1%
							grade 5 events	11515	28787	11683	32552	16618	13247
								4%	7%	4%	10%	5%	4%
							grade 6 events	5347	101159	6375	74516	22542	6606
								2%	26%	2%	23%	6%	2%
							grade 7 events	207400	166607	217765	140459	226509	223974
								84%	44%	84%	44%	69%	80%

2.2 Compared Parameters

Parameter	Planned	Actual	Parameter	Planned	Actual
Instrument	ACIS	ACIS	Obspar format version number	7	7
Detector	ACIS-356789	ACIS-356789	Obspar file type	PREDICTED	ACTUAL
Grating	NONE	NONE	Obspar update status	NONE	UPDATED
Data mode	FAINT	FAINT	CCD I0 on	N	N
Observation mode	POINTING	POINTING	CCD I1 on	N	N
[deg] Pointing RA	177.890873	177.8881996428826	CCD I2 on	N	N
[deg] Pointing Dec	-2.395169	-2.36797728597404	CCD I3 on	O3	Y
[deg] Pointing Roll	64.677765	64.83428010616926	CCD S0 on	N	N
[mm] SIM focus pos	-0.684267	-0.6828225247311905	CCD S1 on	O2	Y
[mm] SIM defocus	0	0.001444936568705701	CCD S2 on	O5	Y
[mm] SIM translation stage pos	-190.132523	-190.1400660498719	CCD S3 on	Y	Y
[mm] SIM translation stage offset	0	0.00754346686406393	CCD S4 on	O4	Y
[s] Observation start time (MET)	411962838.184000	411961160.32468	CCD S5 on	O1	Y
Observation start date	2011-01-21T02:06:12	2011-01-21T01:39:20	Number of optional ACIS chips dropped	0	0
[s] Observation end time (MET)	411998238.184000	411998841.37662	On-chip summing requested	N	N
Observation end date	2011-01-21T11:56:12	2011-01-21T12:07:21	Subarray requested	NONE	NONE
Read mode	TIMED	TIMED	Alternating exposures requested	N	N
			[s] Primary exposure time	0.000000	3.2

2.3 Aspect



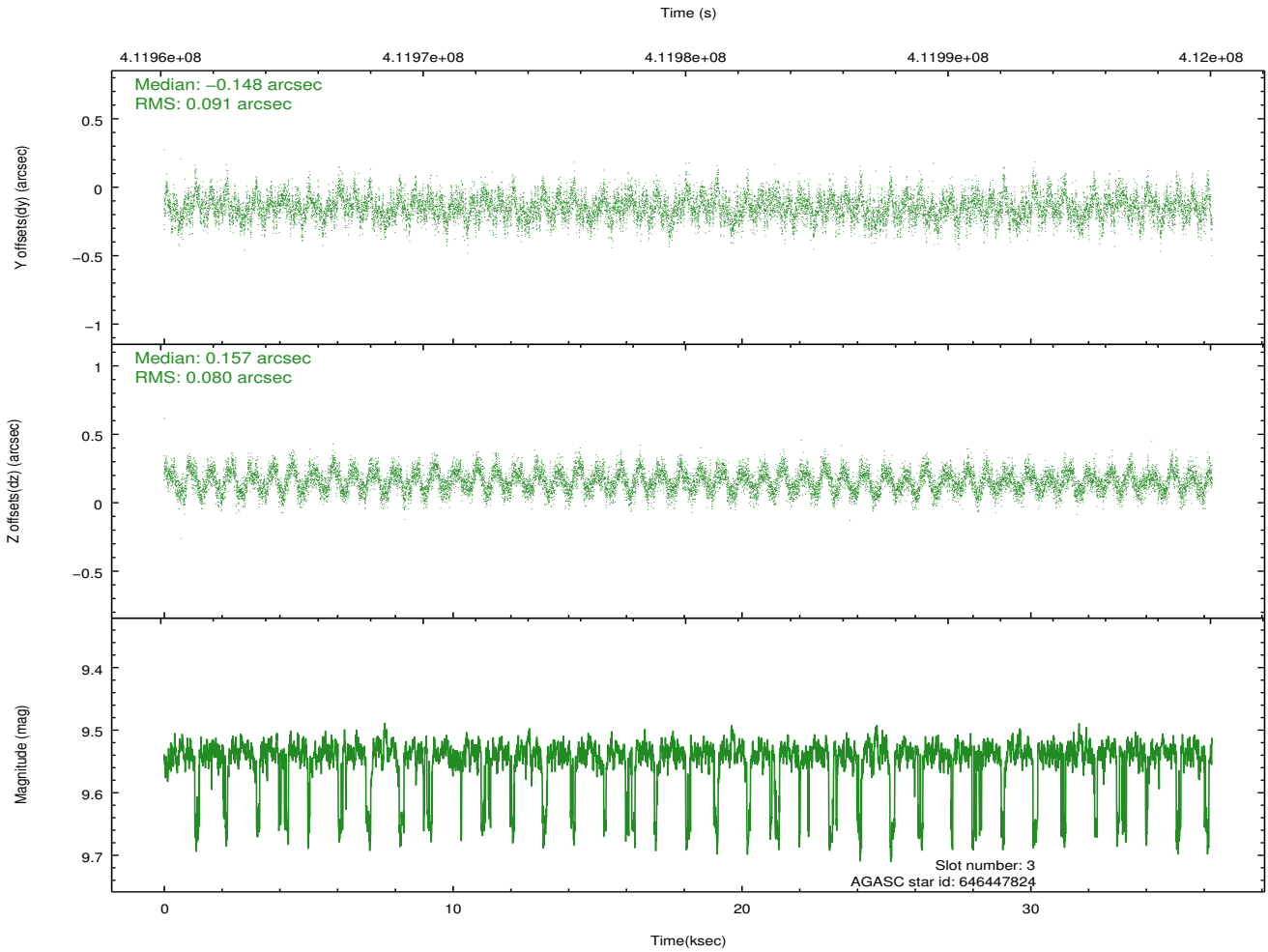
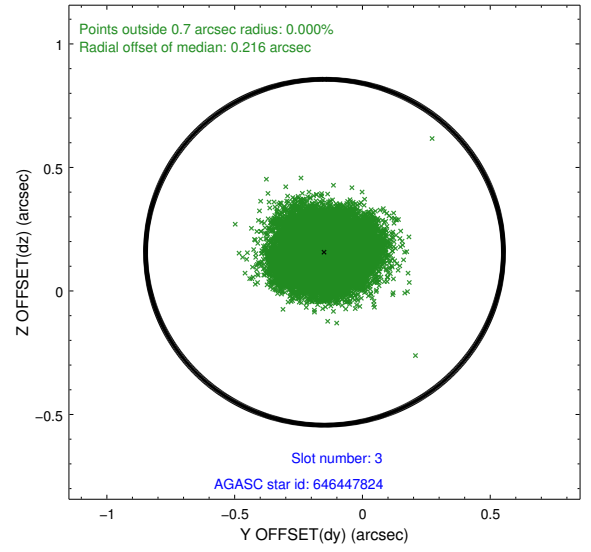
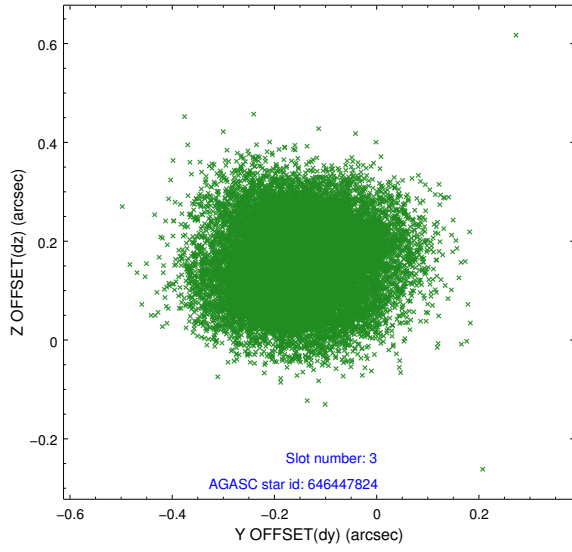


Slot Statistics

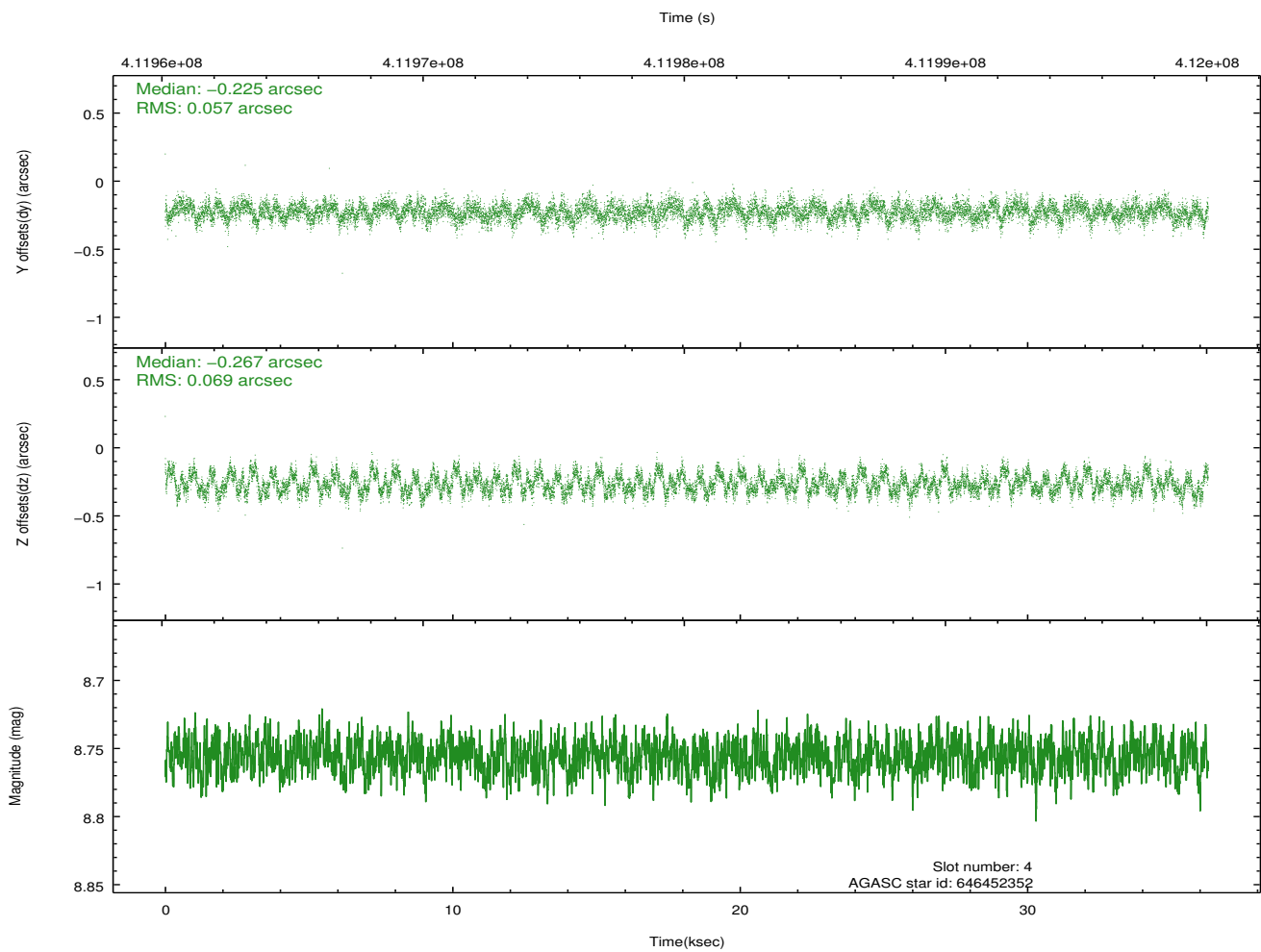
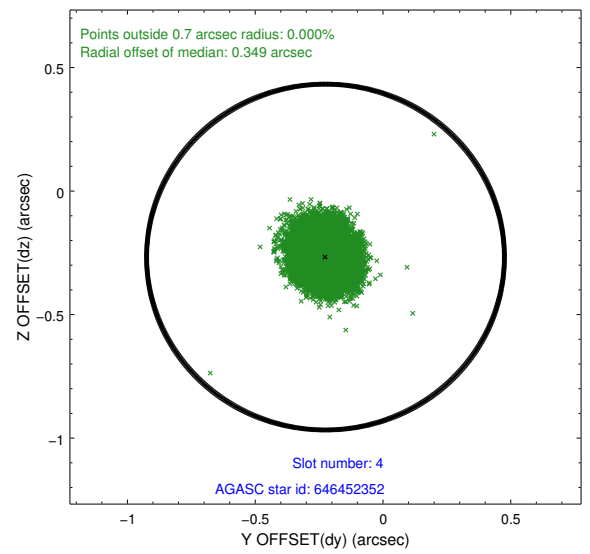
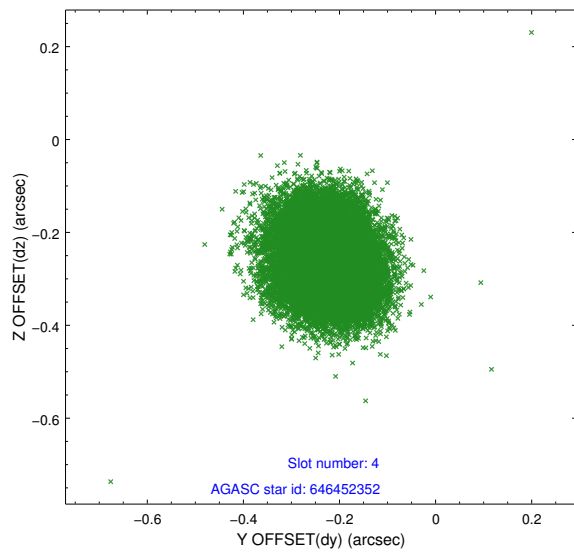
slot	status	id	mag	n_pts	med_dy	med_dz	dr1	dr2	ra	dec	mean_y	mean_z
0	FID	ACIS-S-2	6.97	8853	-0.092	-0.029	0.008	0.013	0.000000	0.000000	-770.69	-1737.43
1	FID	ACIS-S-4	7.04	8853	0.217	0.052	0.015	0.036	0.000000	0.000000	2142.87	171.11
2	FID	ACIS-S-5	7.08	8851	-0.157	-0.014	0.017	0.038	0.000000	0.000000	-1823.57	164.73
3	GUIDE	646447824	9.54	17573	-0.148	0.157	0.131	0.205	178.405504	-2.010198	2043.44	-1080.82
4	GUIDE	646452352	8.76	17690	-0.225	-0.267	0.097	0.149	177.917180	-1.846689	1825.48	759.10
5	GUIDE	646711952	8.93	17698	0.242	-0.133	0.086	0.137	177.400472	-2.745655	-1894.37	1054.67
6	GUIDE	646844112	9.57	17678	0.215	-0.111	0.154	0.241	177.703598	-2.779505	-1538.22	17.28
7	GUIDE	646844320	10.52	17664	-0.090	0.353	0.251	0.392	178.480832	-2.520062	499.78	-2109.27

2.4 Star Slots

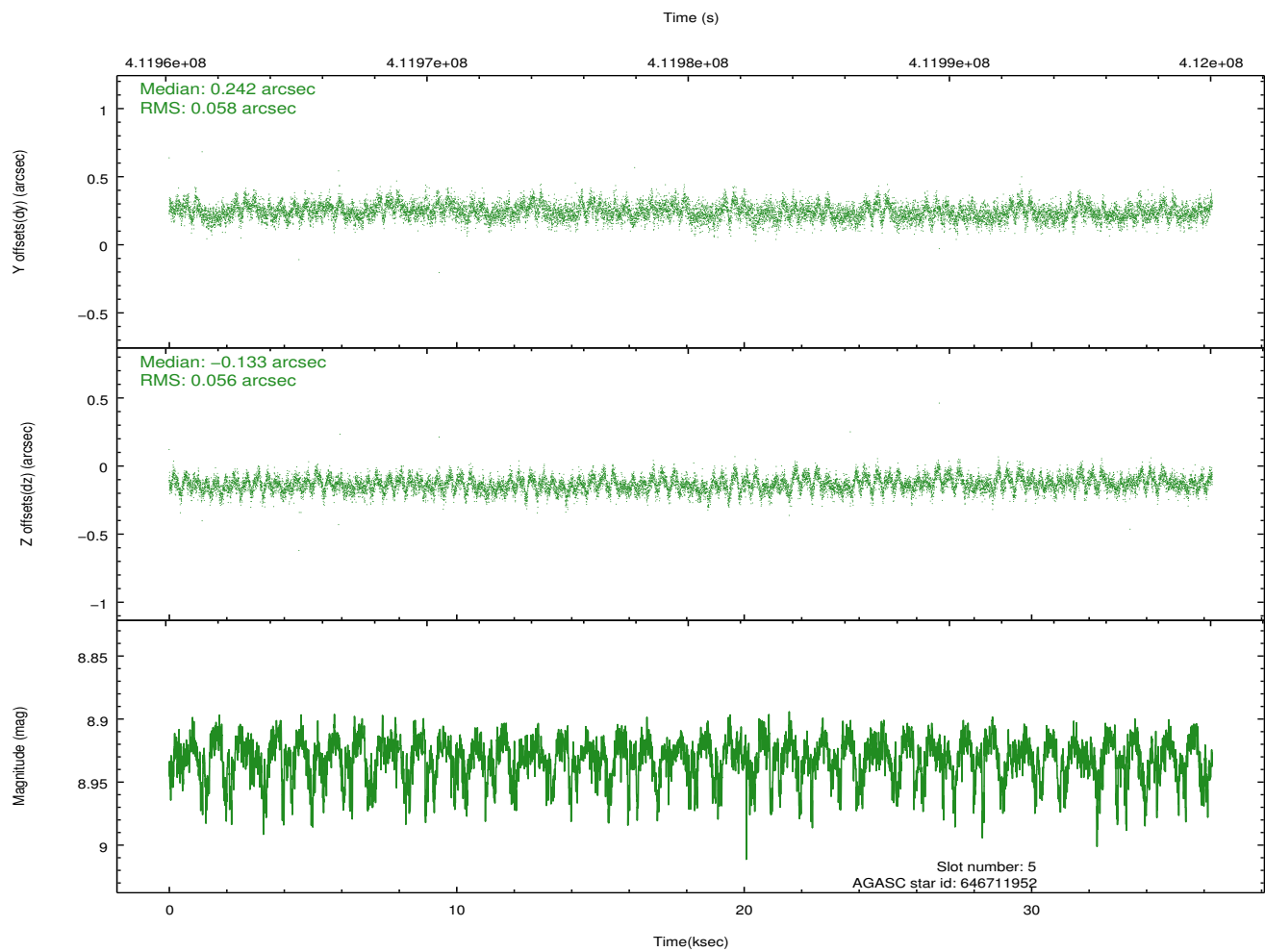
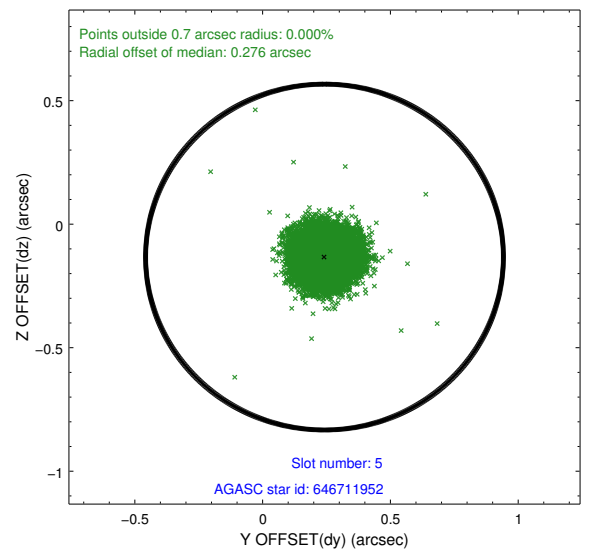
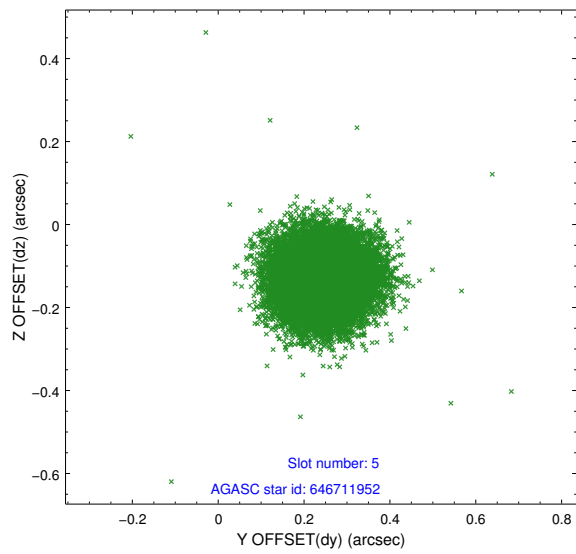
2.4.1 Slot 3



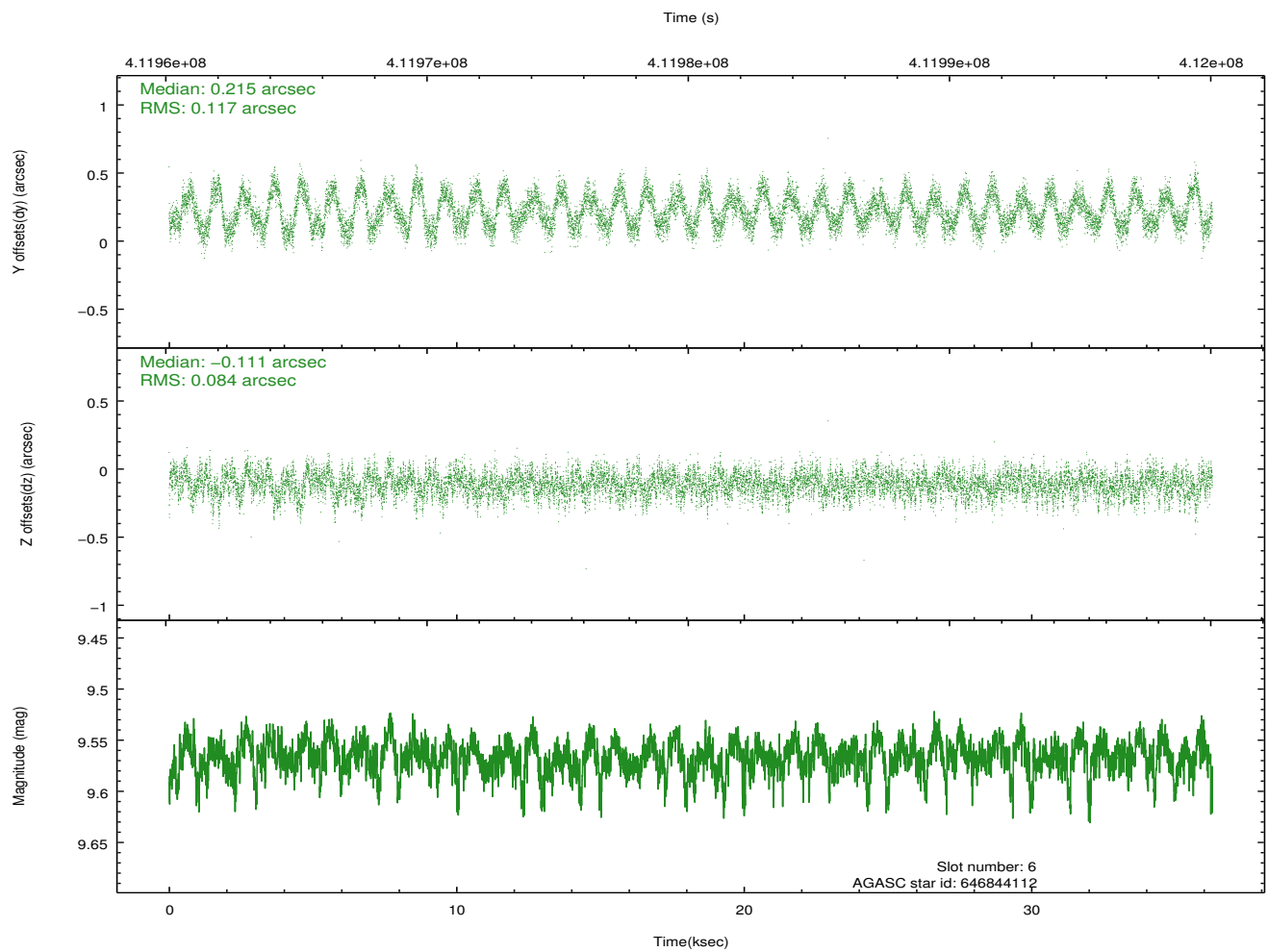
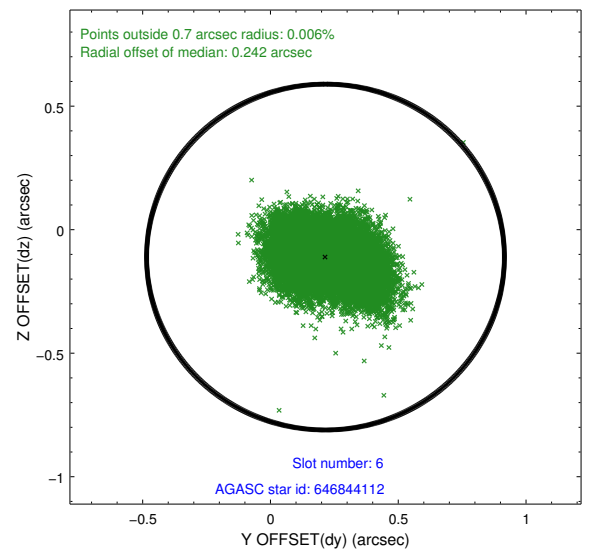
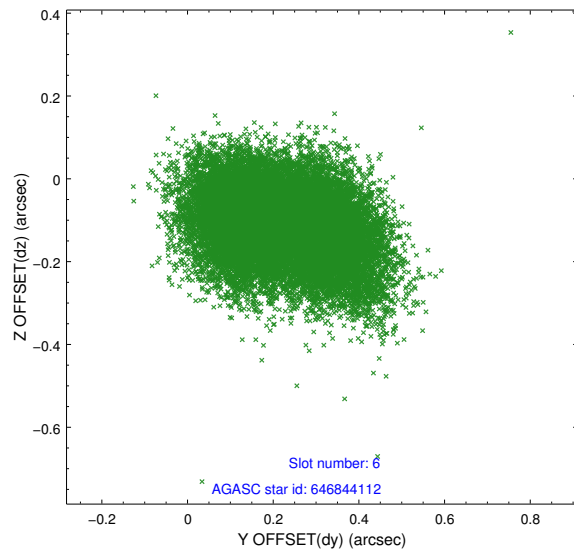
2.4.2 Slot 4



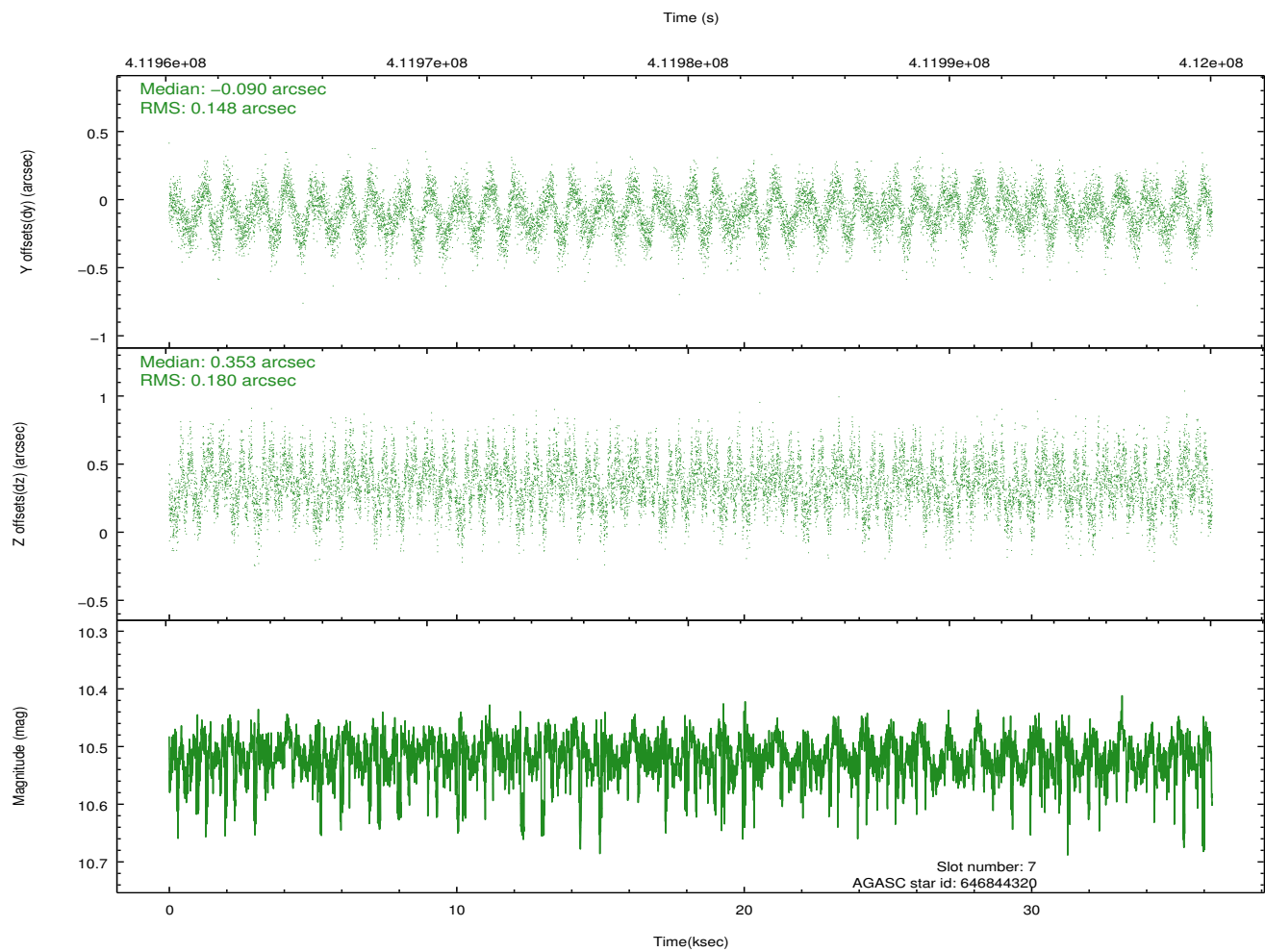
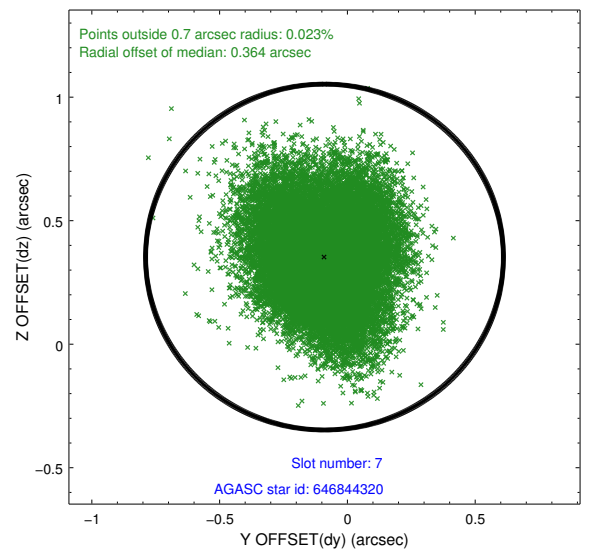
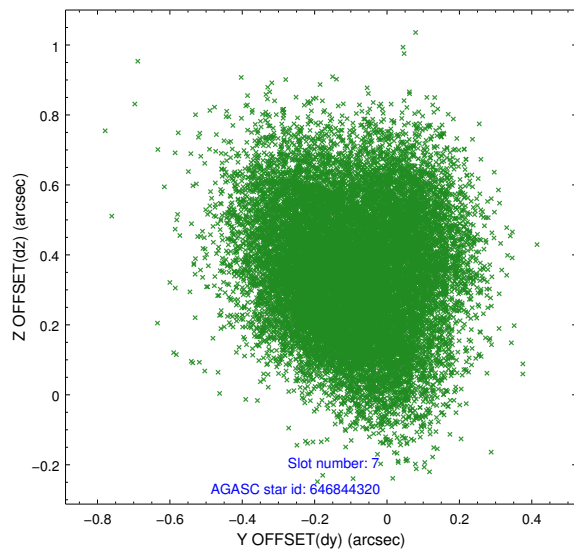
2.4.3 Slot 5



2.4.4 Slot 6

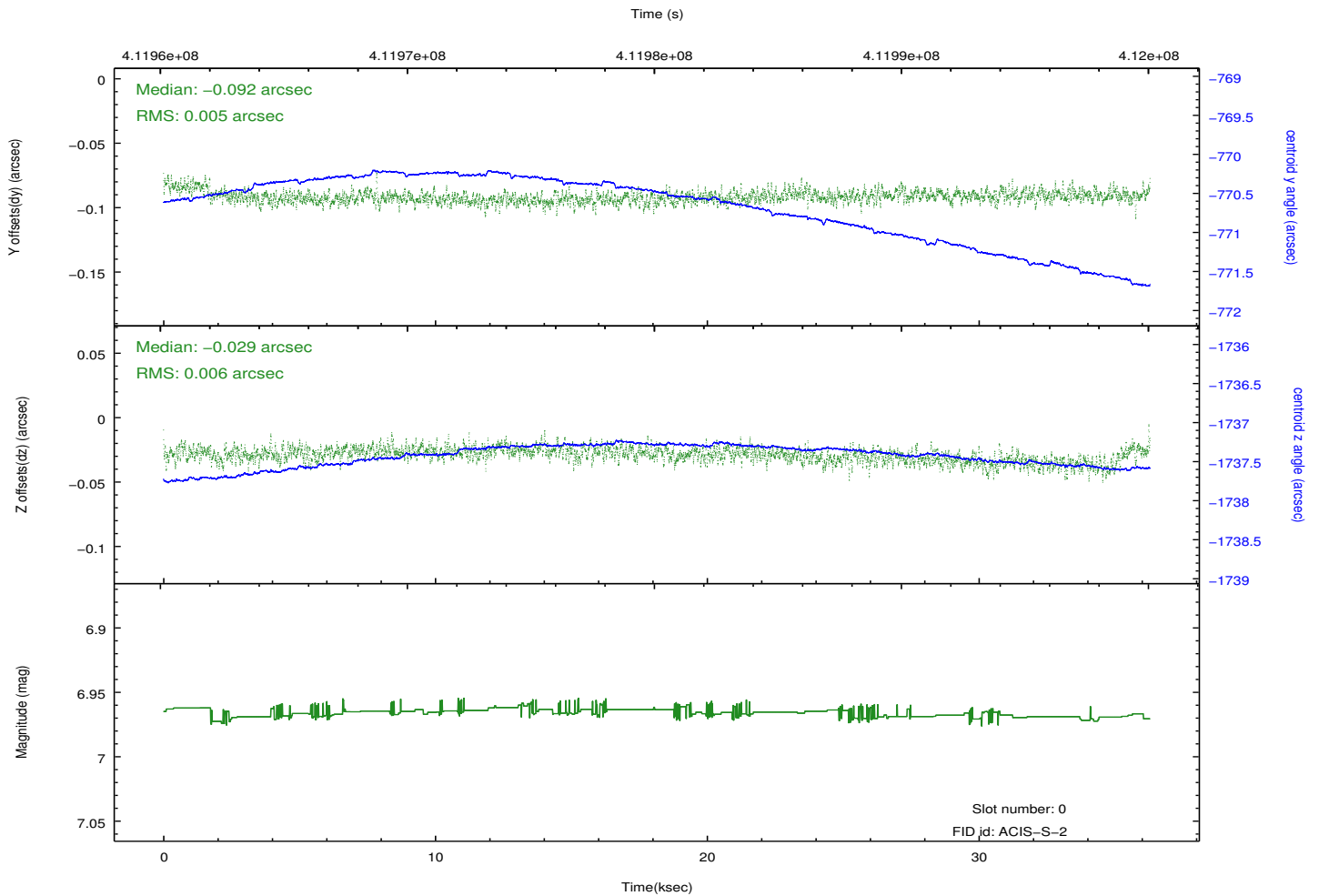
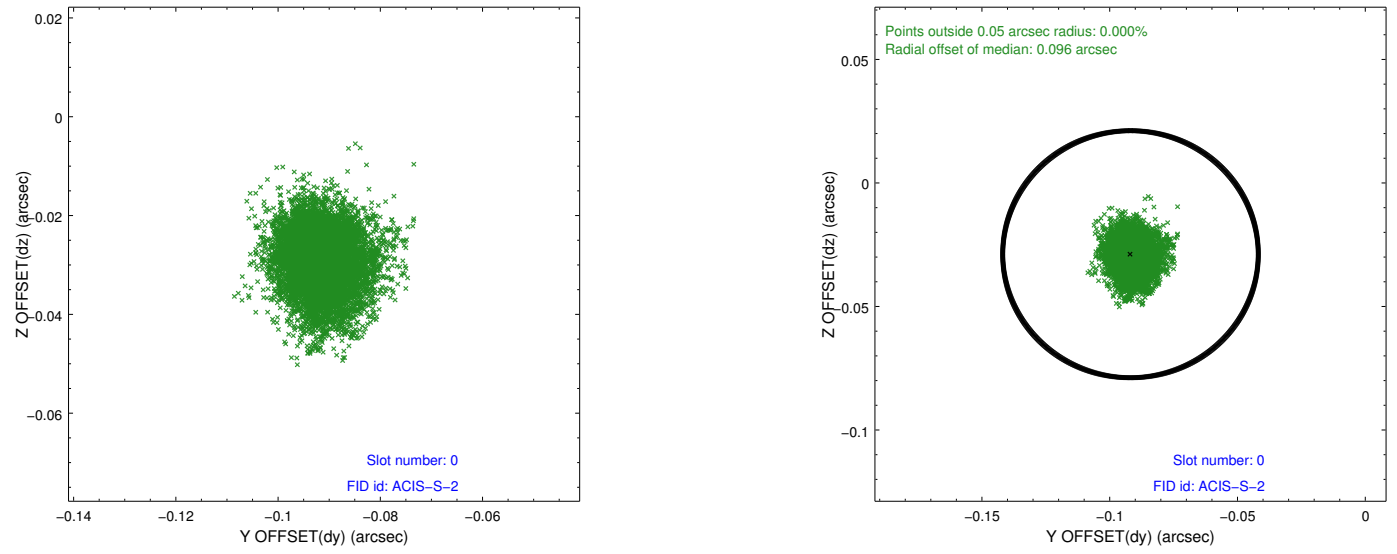


2.4.5 Slot 7

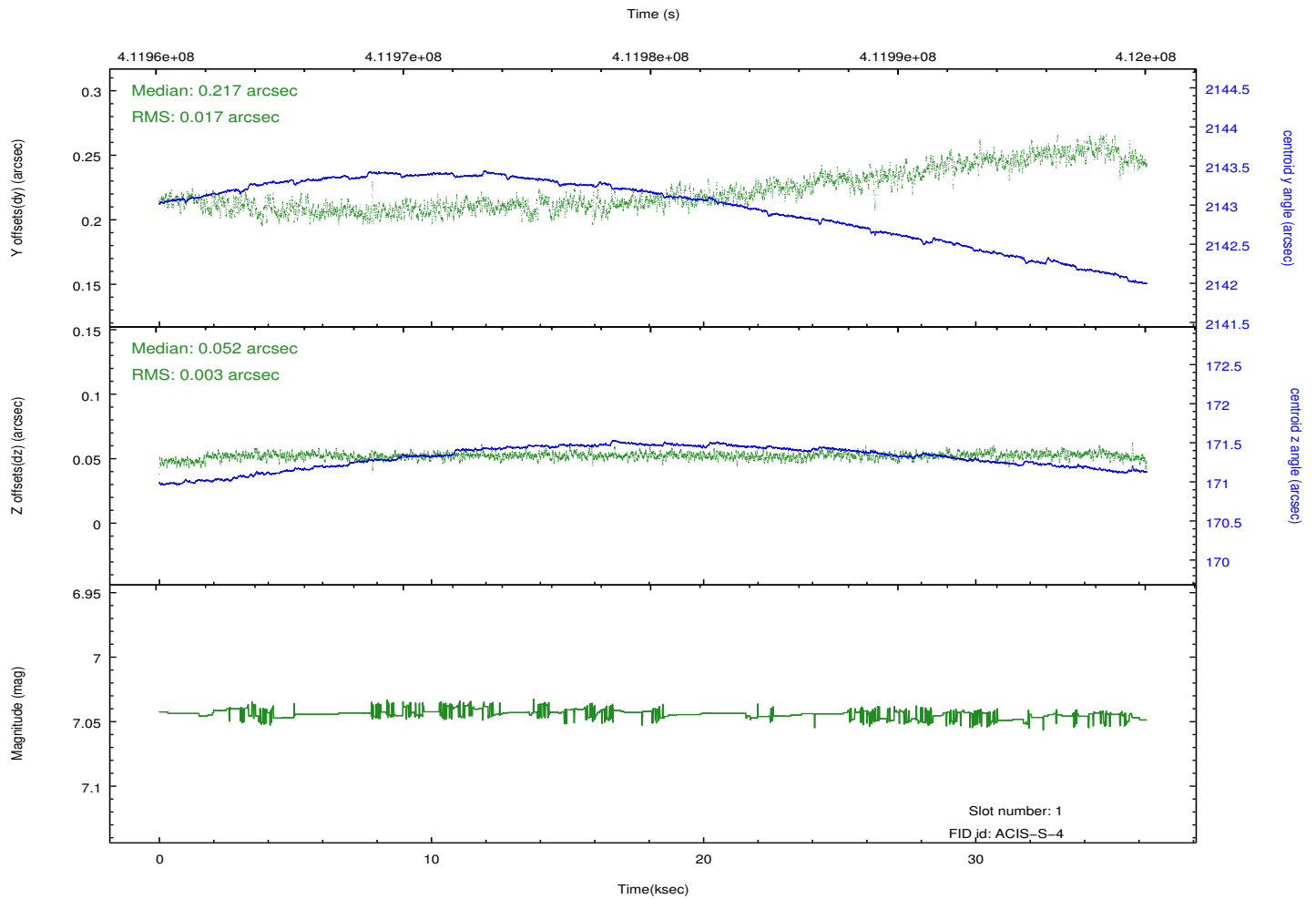
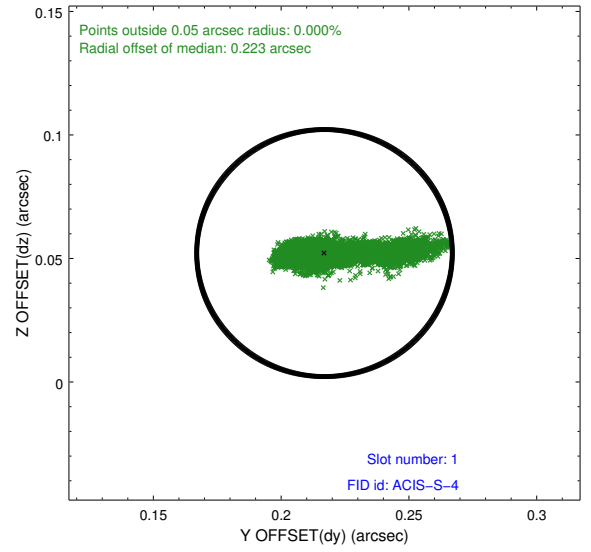
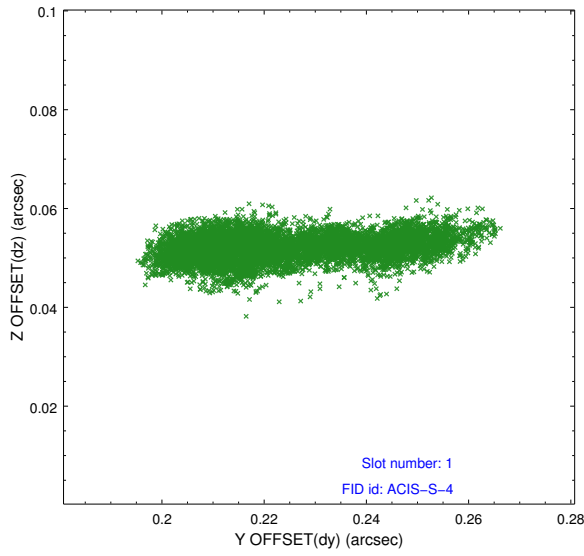


2.5 FID Slots

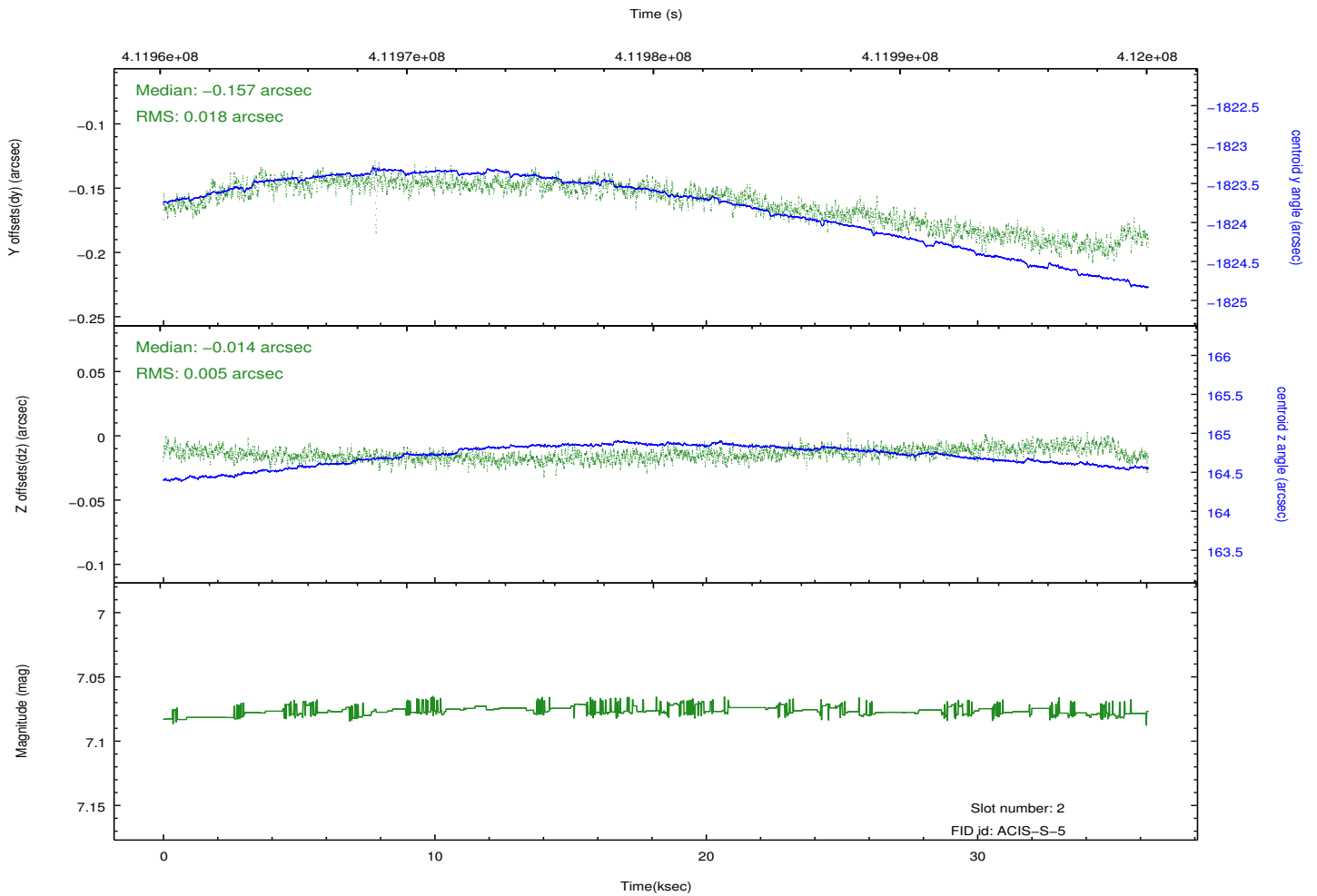
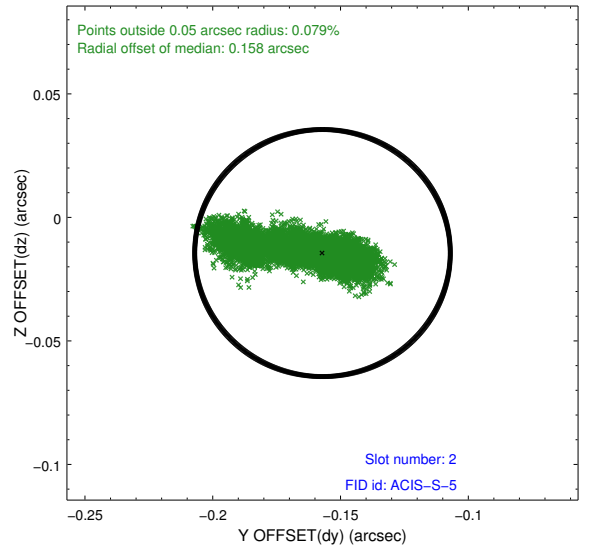
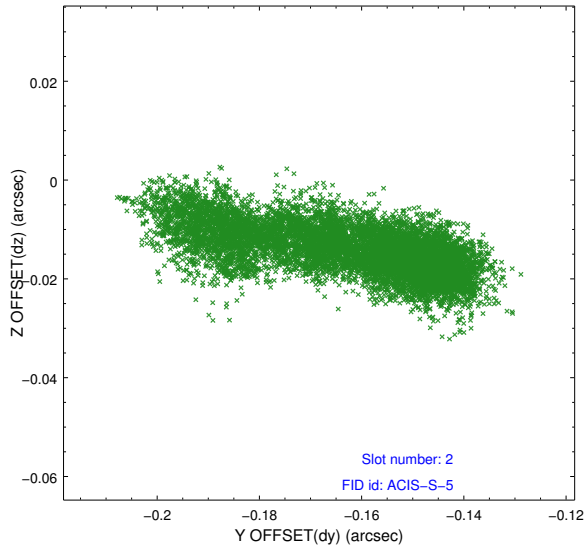
2.5.1 Slot 0



2.5.2 Slot 1



2.5.3 Slot 2



A Summary

A.1 Status

V&V Scientist	Joy Nichols
V&V Date (YYYY-MM-DD)	2012.02.03
V&V Edition	1
V&V Disposition and Status	OK
V&V Charge Time	35.358696905673

A.2 Comments

The data for this observation have been processed using the 'EDSER' sub-pixel event-repositioning algorithm of Li et al. (2004, ApJ, 610, 1204). Small-scale features should become sharper for sources near the aim point. The improvement will be less noticeable for off-axis sources where the size of the point-spread function is comparable to or larger than the size of an ACIS pixel. To take full advantage of the improvement, images should be binned on spatial scales smaller than the size of an ACIS pixel. Note that, at present, the point-spread function has not been calibrated for data to which the EDSEr algorithm has been applied. If dither was disabled for the observation, then the algorithm can introduce artificial aliasing effects on spatial scales smaller than a pixel. If you would prefer to use no sub-pixel adjustment or to apply a coordinate randomization, then use `acis_process_events` to reprocess the data with the parameter `pix_adj=NONE` or `RANDOMIZE`, respectively.