

V&V Reference Report

L2 ASCDS Version : 8.1.1

Observation 1170 - L2 Version 4
Chandra X-Ray Center

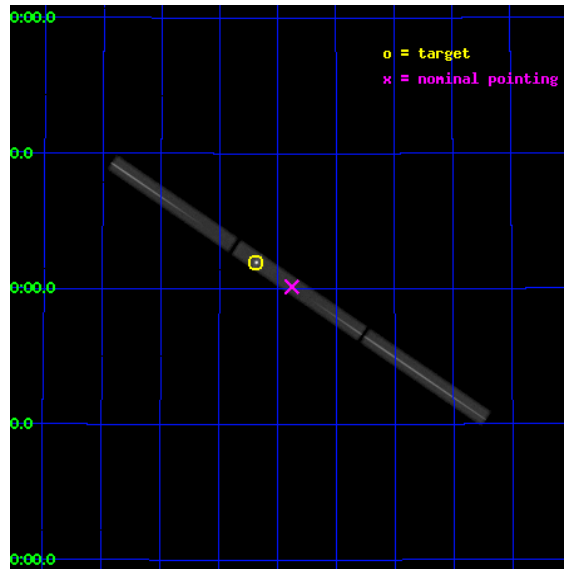
L2 Processing Date : Jul 9 2010

Contents

1	Front	2
2	OBI	3
2.1	OBI	3
2.1.1	Images	3
2.1.2	Parameters	4
2.1.3	Events	4
2.2	Compared Parameters	5
2.3	Aspect	6
2.4	Star Slots	9
2.4.1	Slot 3	9
2.4.2	Slot 4	10
2.4.3	Slot 5	11
2.4.4	Slot 6	12
2.5	FID Slots	13
2.5.1	Slot 0	13
2.5.2	Slot 1	14
2.5.3	Slot 2	15
3	Gratings	16
3.1	LETG Arm	16
A	Summary	18
A.1	Status	18
A.2	Comments	18

1 Front

seq_num	280120	Sequence number
obs_id	1170	Observation id
title	 	Proposal title
observer	Dr. CXC Calibration	Principal investigator
object	HZ43	Source name
ra_targ	199.092083	Observer's specified target RA
dec_targ	29.099	Observer's specified target Dec
ra_nom	198.93924488626	Nominal RA
dec_nom	29.008548520913	Nominal Dec
roll_nom	34.055883190428	Nominal Roll
revision	4	Processing version of data
ontime	10291.000371732	[s]
livetime	10183.000889699	Ontime multiplied by DTCOR
l2events	987454	Number of level 2 events

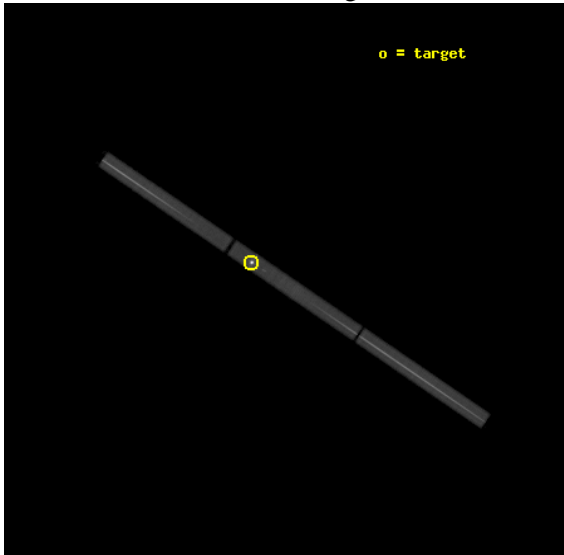


2 OBI

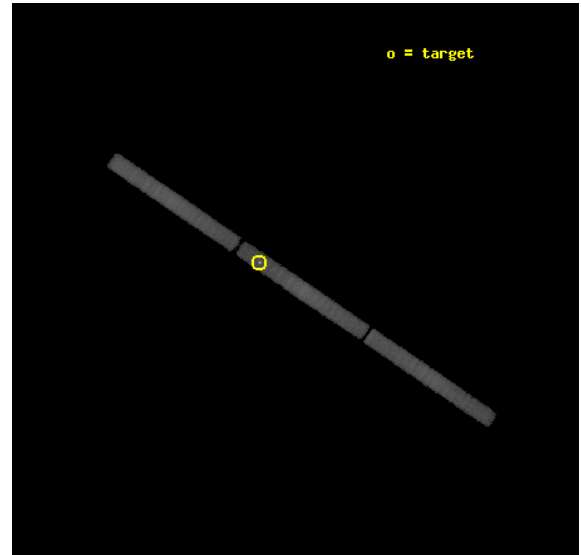
2.1 OBI

2.1.1 Images

Level 1 Image



Level 1 Bad Events



2.1.2 Parameters

obi_num	0	Obi number	sched_exp_time	10000.000000	Scheduled observation exposure time
ascdsver	8.1.1	Processing system revision	ontime	10291.000371732	[s]
caldbver	4.1.4	 	ll events	1307753	Number of level 1 events
date	2009-11-21T12:48:16	Date and time of file creation			
revision	4	Processing version of data			

2.1.3 Events

Level 1 Events

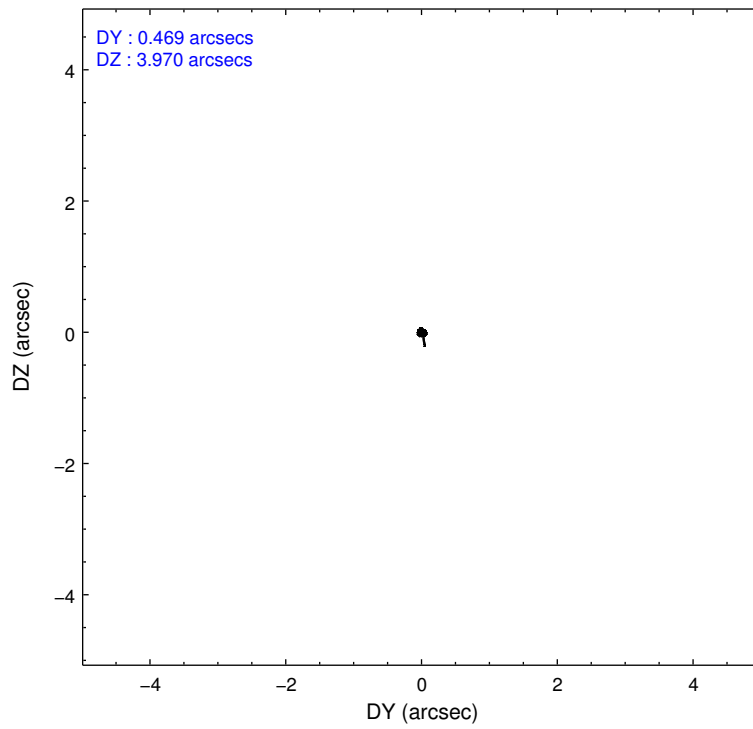
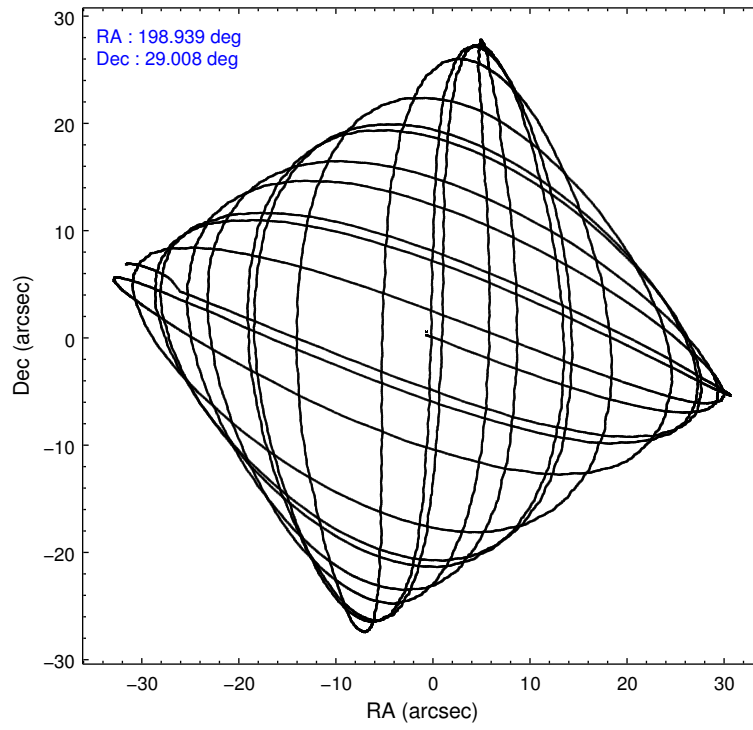
	segment 1	segment 2	segment 3
level 1 events	378379	589372	340002
rejected events	71024	83941	85808
rejected %	18%	14%	25%

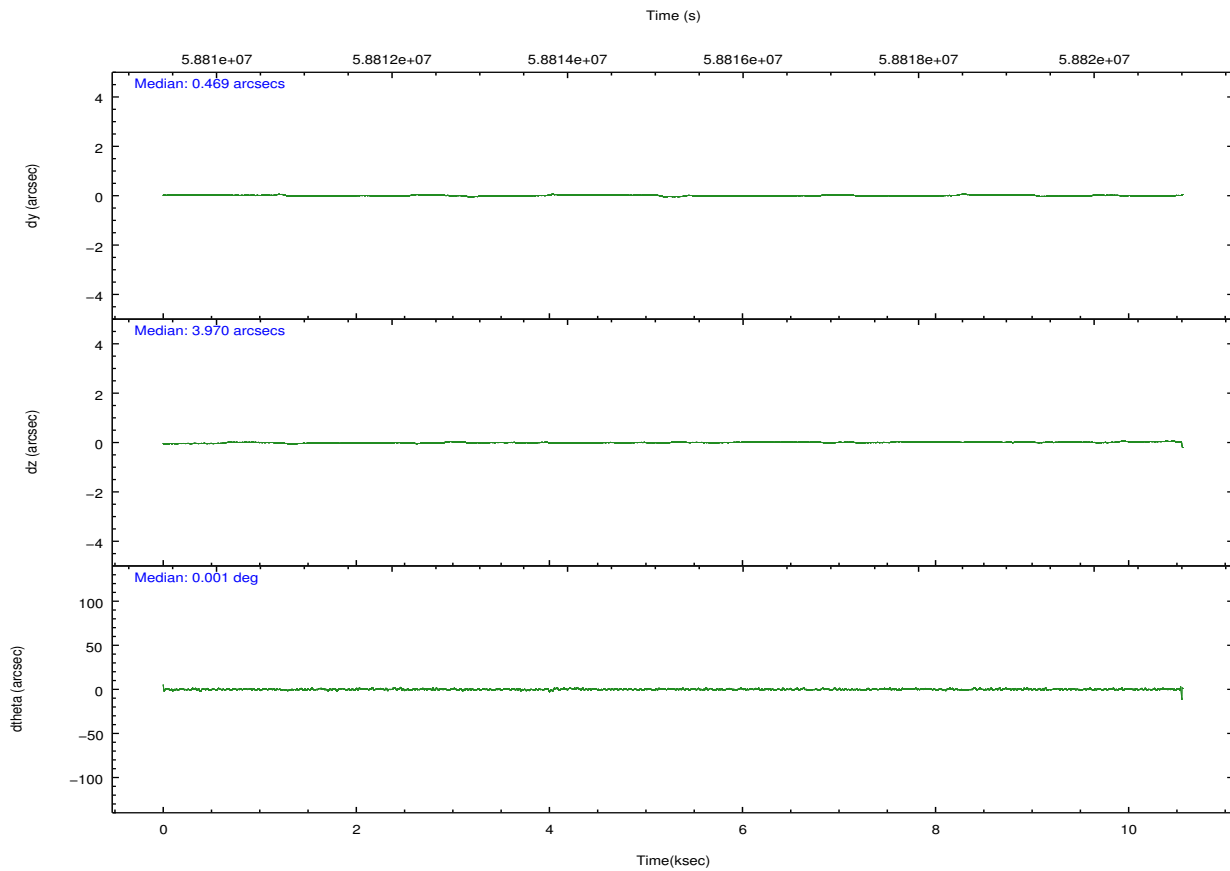
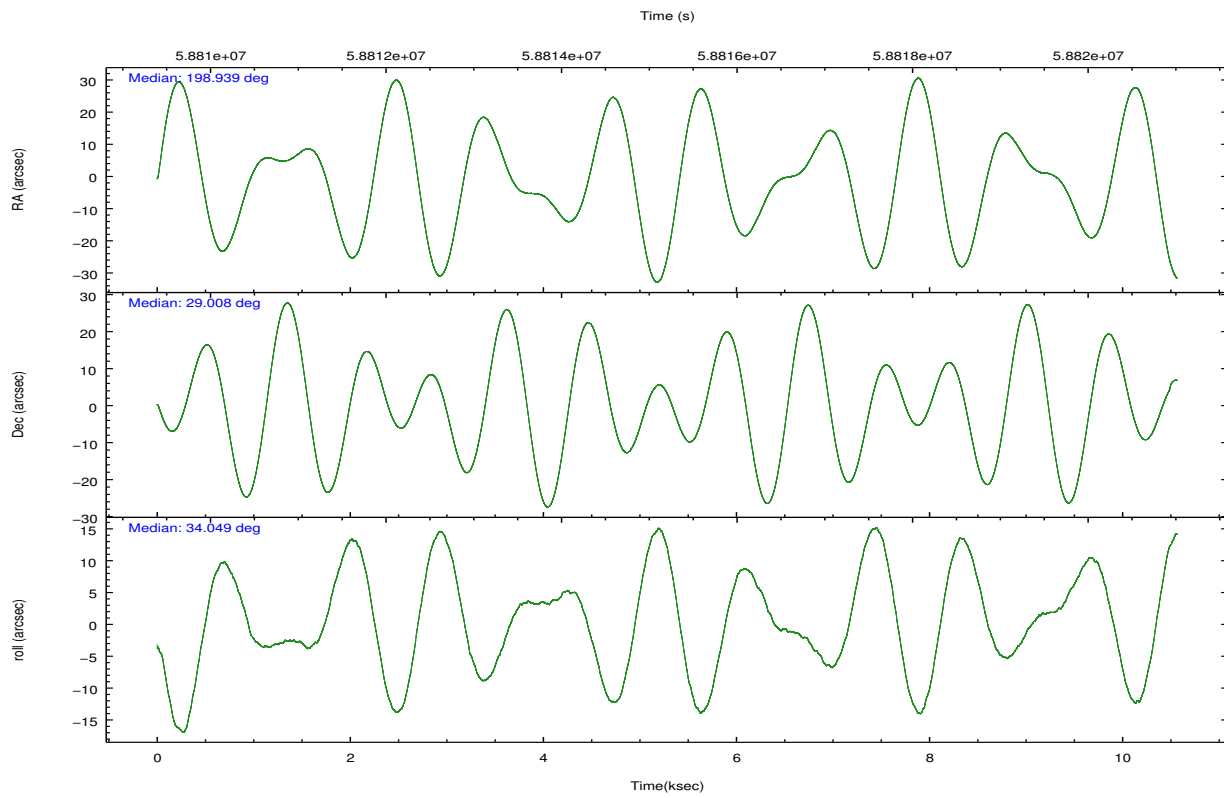
2.2 Compared Parameters

Parameter	Planned	Actual
Instrument	HRC	HRC
Detector	HRC-S	HRC-S
Grating	LETG	LETG
Data mode	OBSERVING	OBSERVING
Observation mode	POINTING	POINTING
Pointing RA	198.925622	198.9392448862564
Pointing Dec	28.982116	29.00854852091276
Pointing Roll	33.995154	34.05588319042792
SIM focus pos (mm)	-1.429586	-1.428180813131781
SIM defocus (mm)	0.1037507710433287	0.1051558262725154
SIM translation stage pos (mm)	250.455976	250.466033080201
SIM translation stage offset (mm)	0	-0.01005468664627074
Observation start time	58810404.184000	58809737.693673
Observation start date	1999-11-12T16:12:20	1999-11-12T16:02:17
Observation end time	58820404.184000	58820716.98157
Observation end date	1999-11-12T18:59:00	1999-11-12T19:05:16

Parameter	Planned	Actual
Obspar format version number	6	6
Obspar file type	PREDICTED	ACTUAL
Obspar update status	NONE	UPDATED

2.3 Aspect



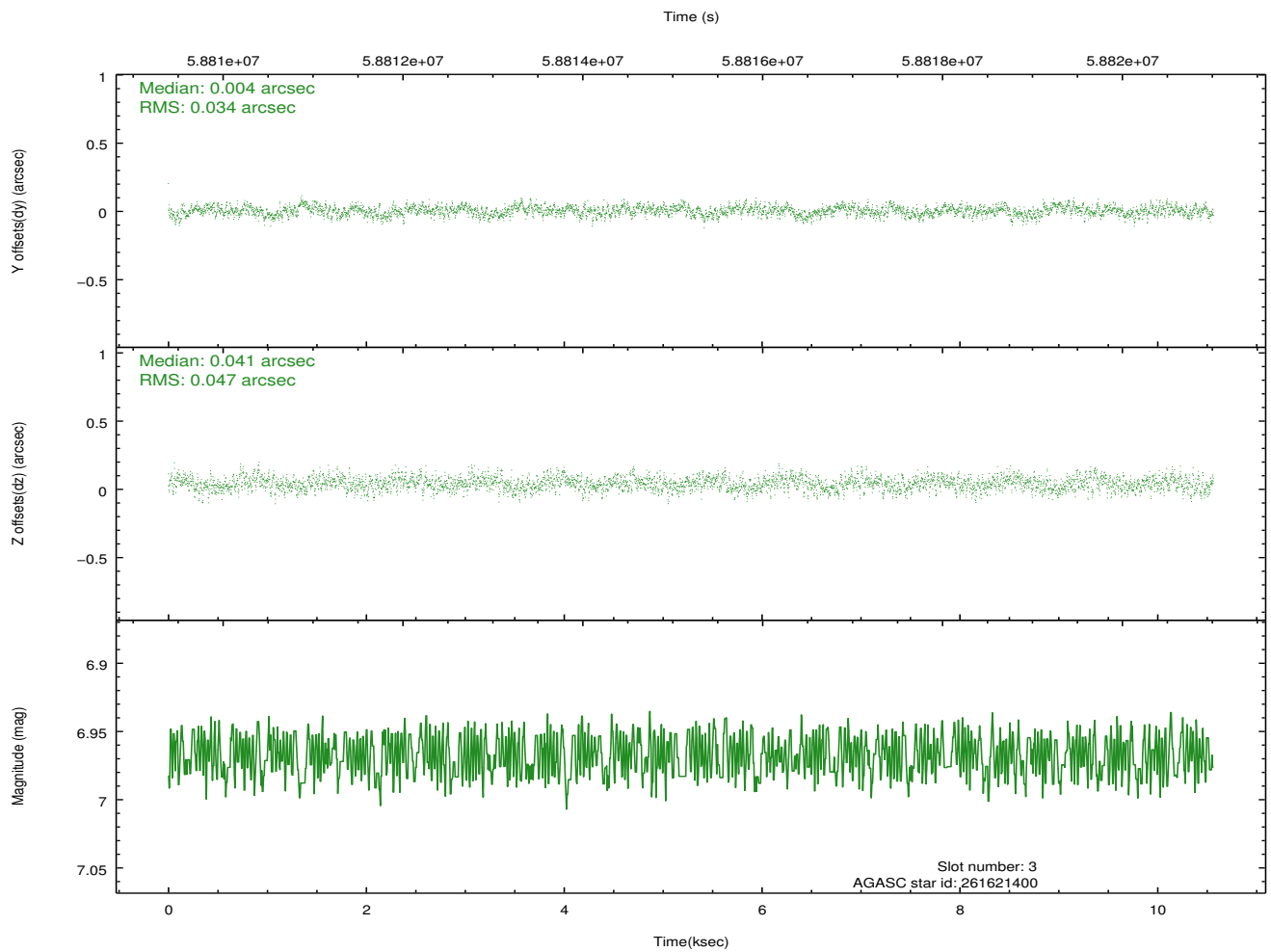
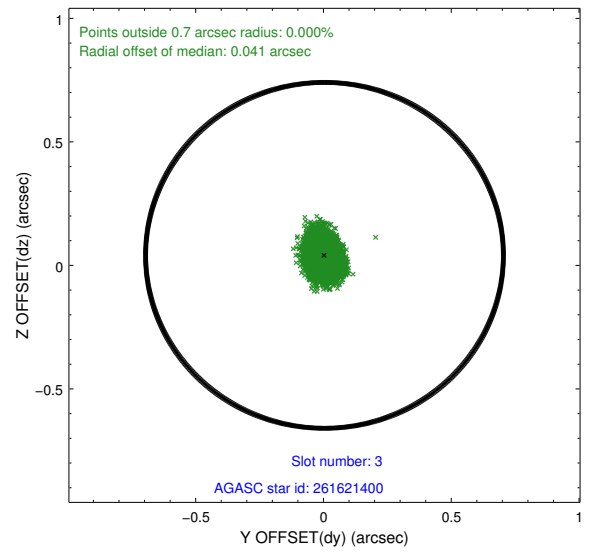
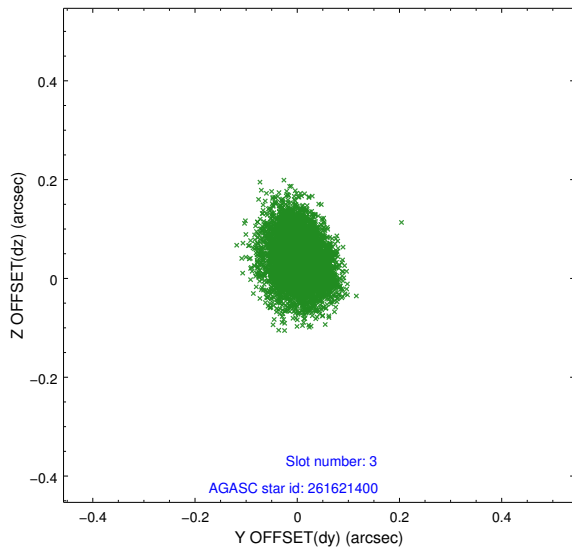


Slot Statistics

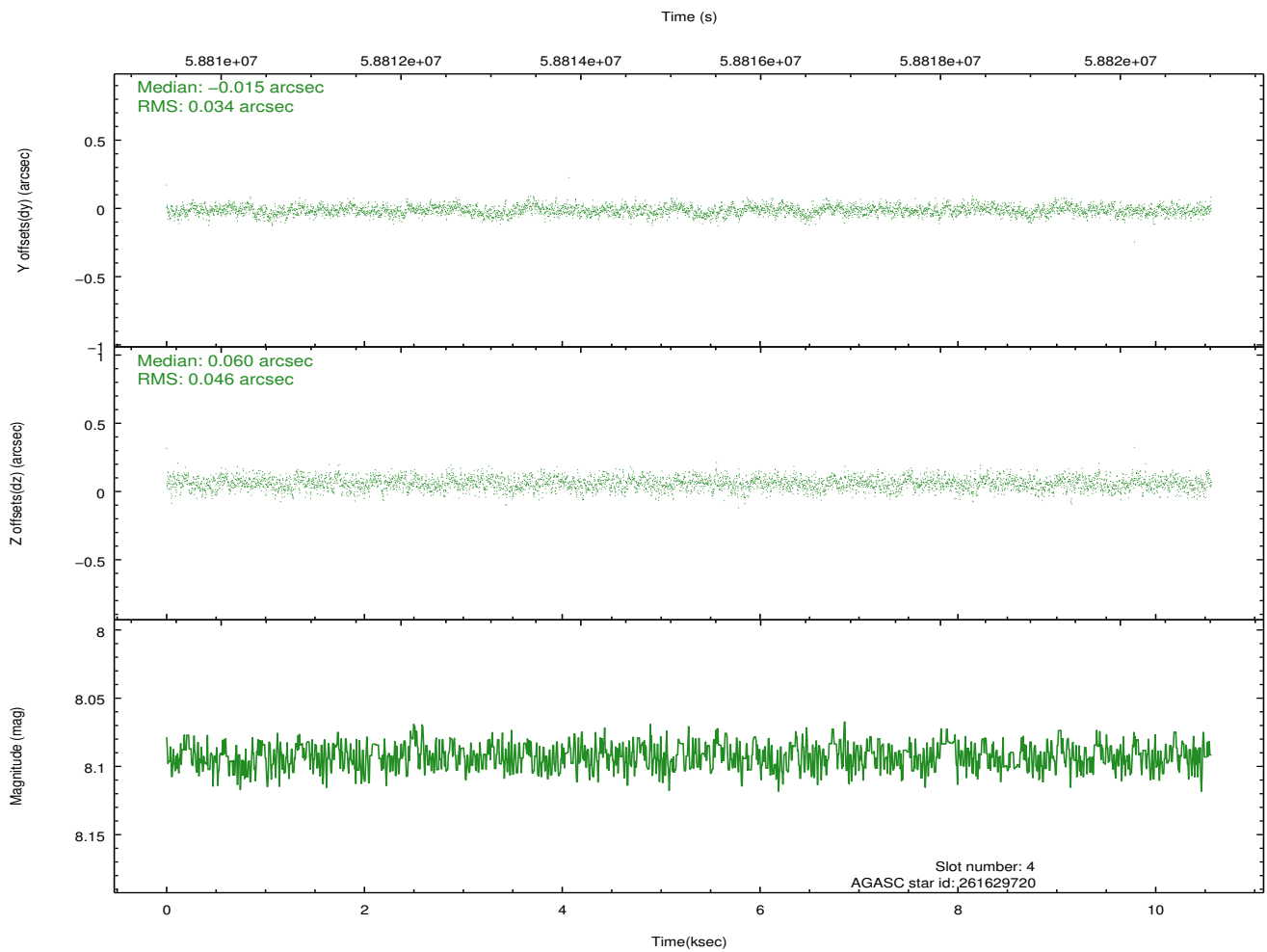
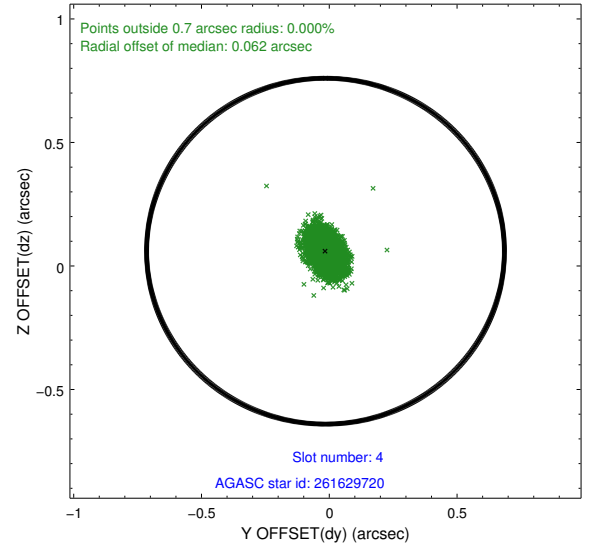
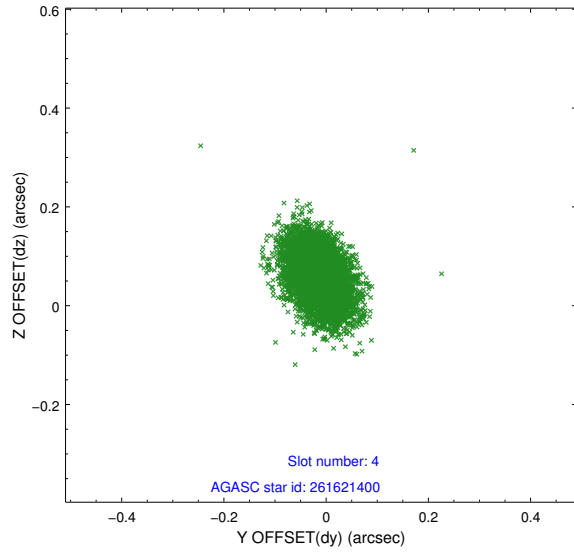
slot	status	id	mag	n_pts	med_dy	med_dz	dr1	dr2	ra	dec	mean_y	mean_z
0	FID	HRC-S-2	6.97	5150	0.134	0.025	0.007	0.013	0.000000	0.000000	1245.19	-445.01
1	FID	HRC-S-3	7.01	5152	0.127	-0.099	0.005	0.010	0.000000	0.000000	-1156.90	577.14
2	FID	HRC-S-4	6.99	5147	0.145	-0.221	0.007	0.013	0.000000	0.000000	1243.63	579.59
3	GUIDE	261621400	6.97	5154	0.004	0.041	0.062	0.100	198.901600	28.741982	-545.77	-674.13
4	GUIDE	261629720	8.09	5154	-0.015	0.060	0.060	0.100	199.236176	29.044452	936.82	-359.08
5	GUIDE	261619776	8.80	5151	-0.040	-0.058	0.089	0.146	198.654383	29.401174	139.02	1727.35
6	GUIDE	261626376	9.71	5145	0.050	-0.045	0.096	0.158	198.947288	29.347445	792.00	1053.02
7	UNUSED		0.00	0	0.000	0.000	0.000	0.000	0.000000	0.000000	0.00	0.00

2.4 Star Slots

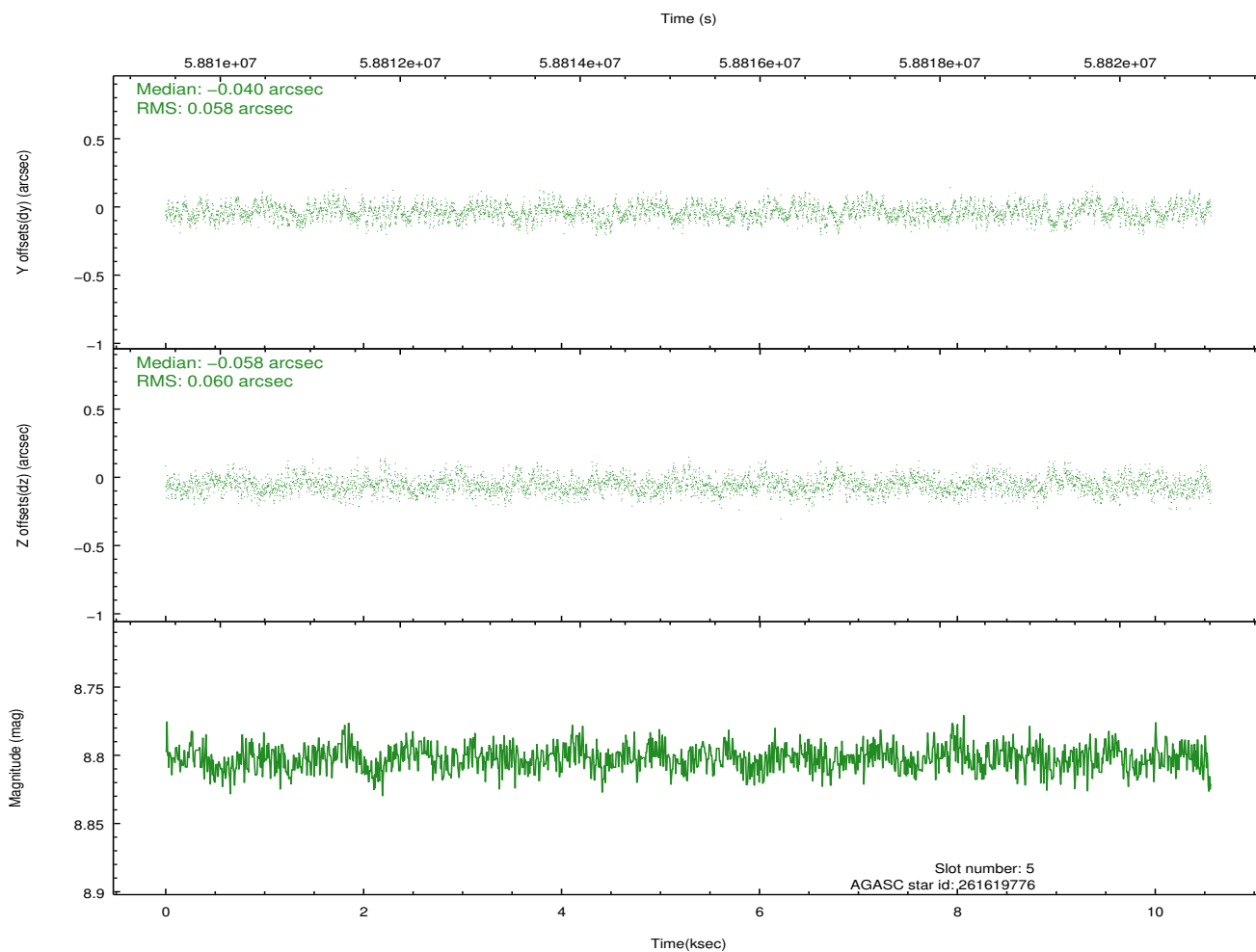
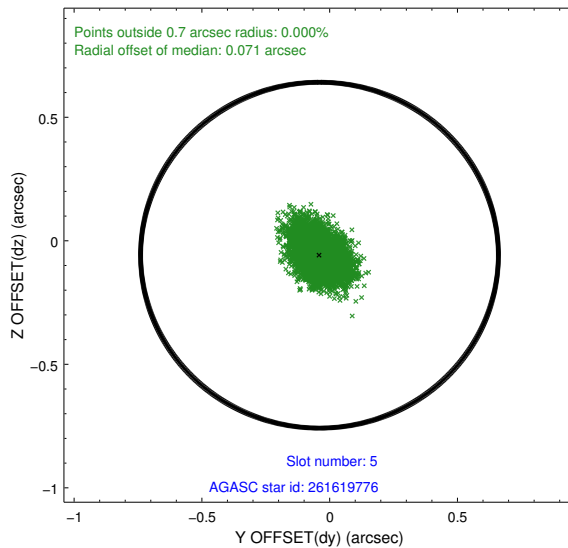
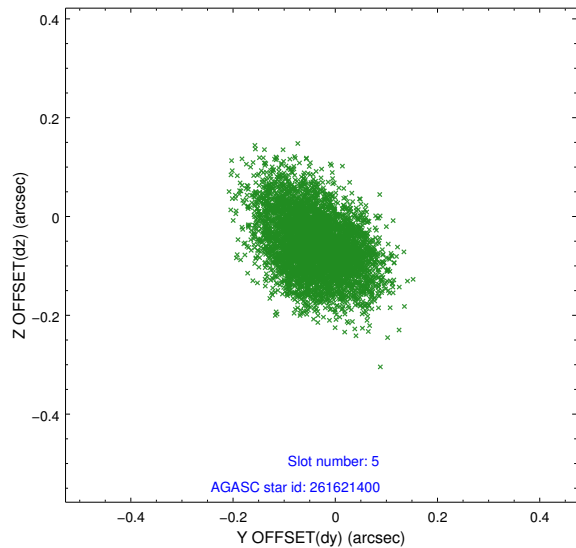
2.4.1 Slot 3



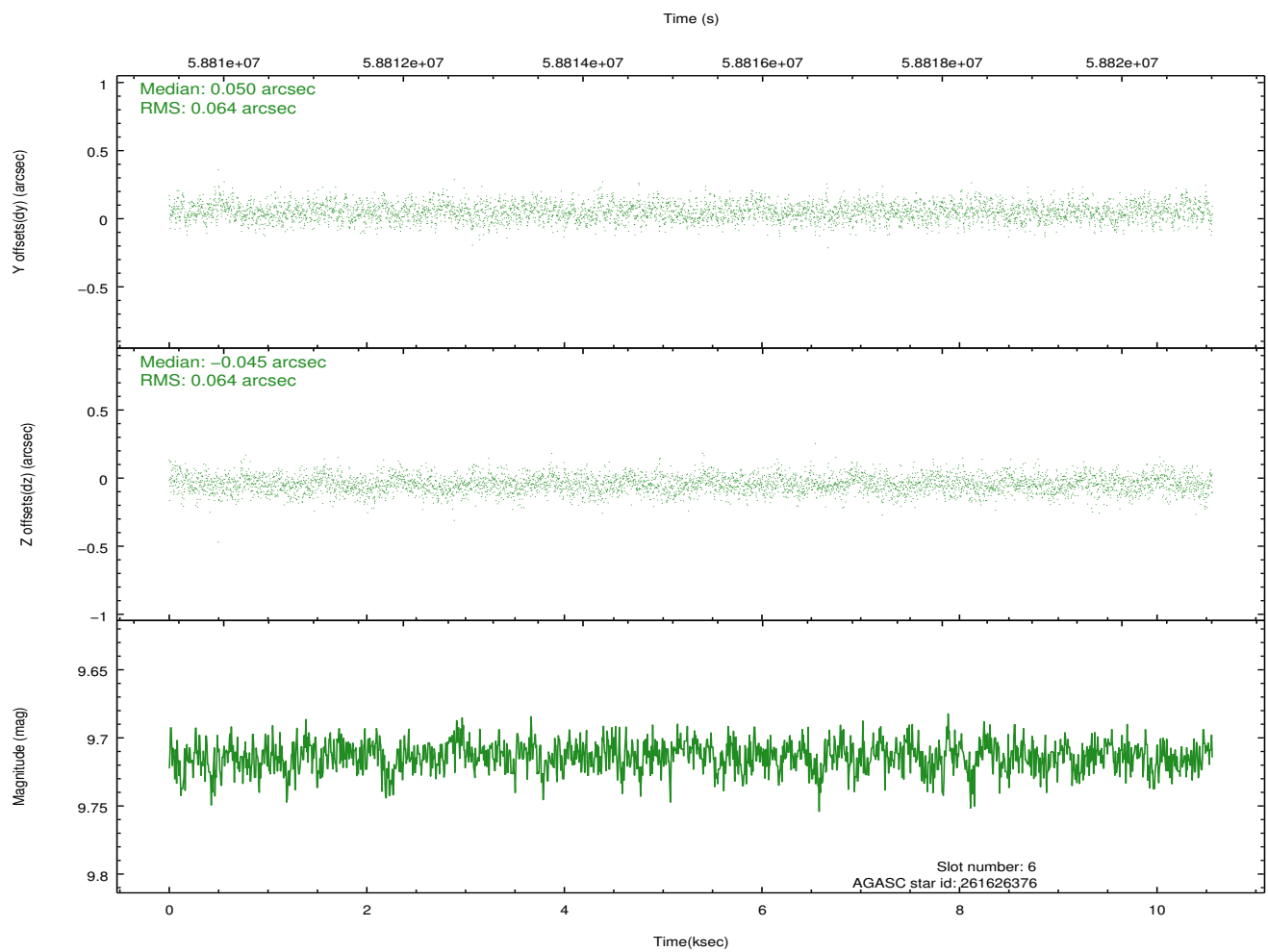
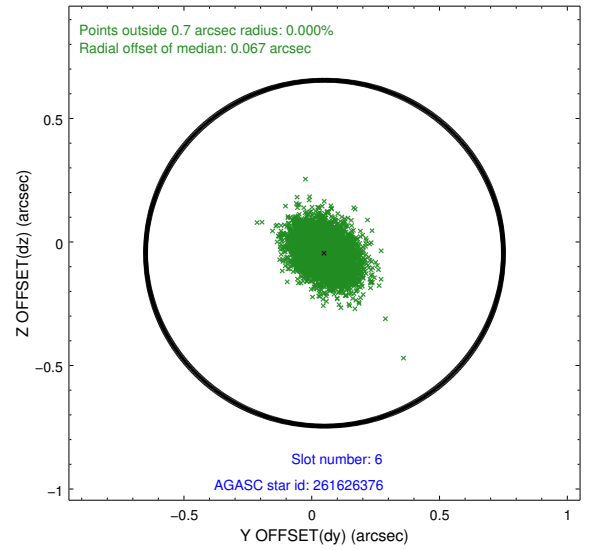
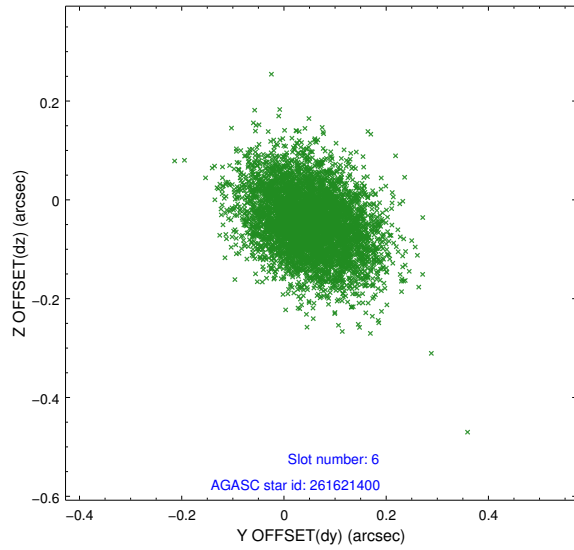
2.4.2 Slot 4



2.4.3 Slot 5

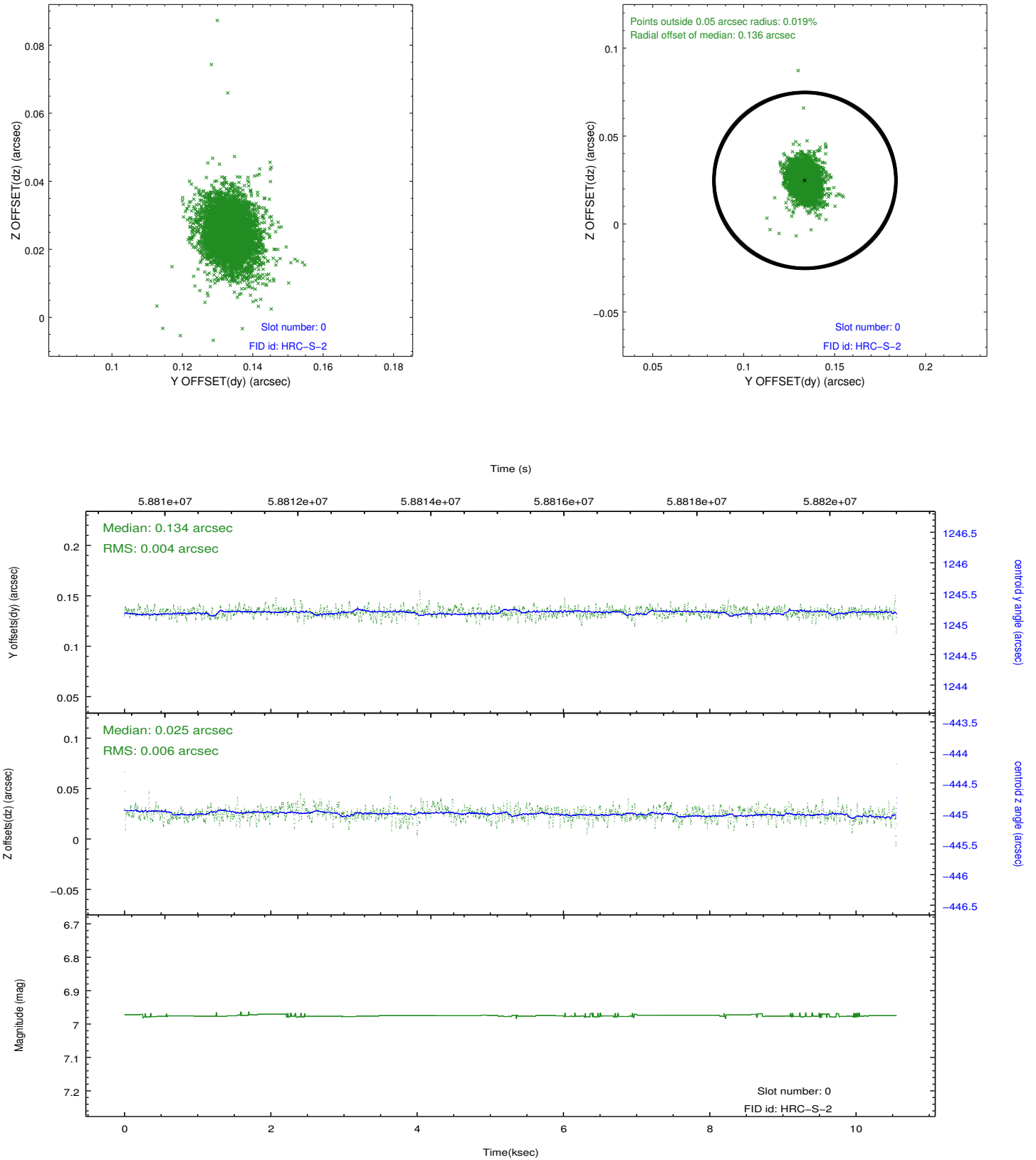


2.4.4 Slot 6

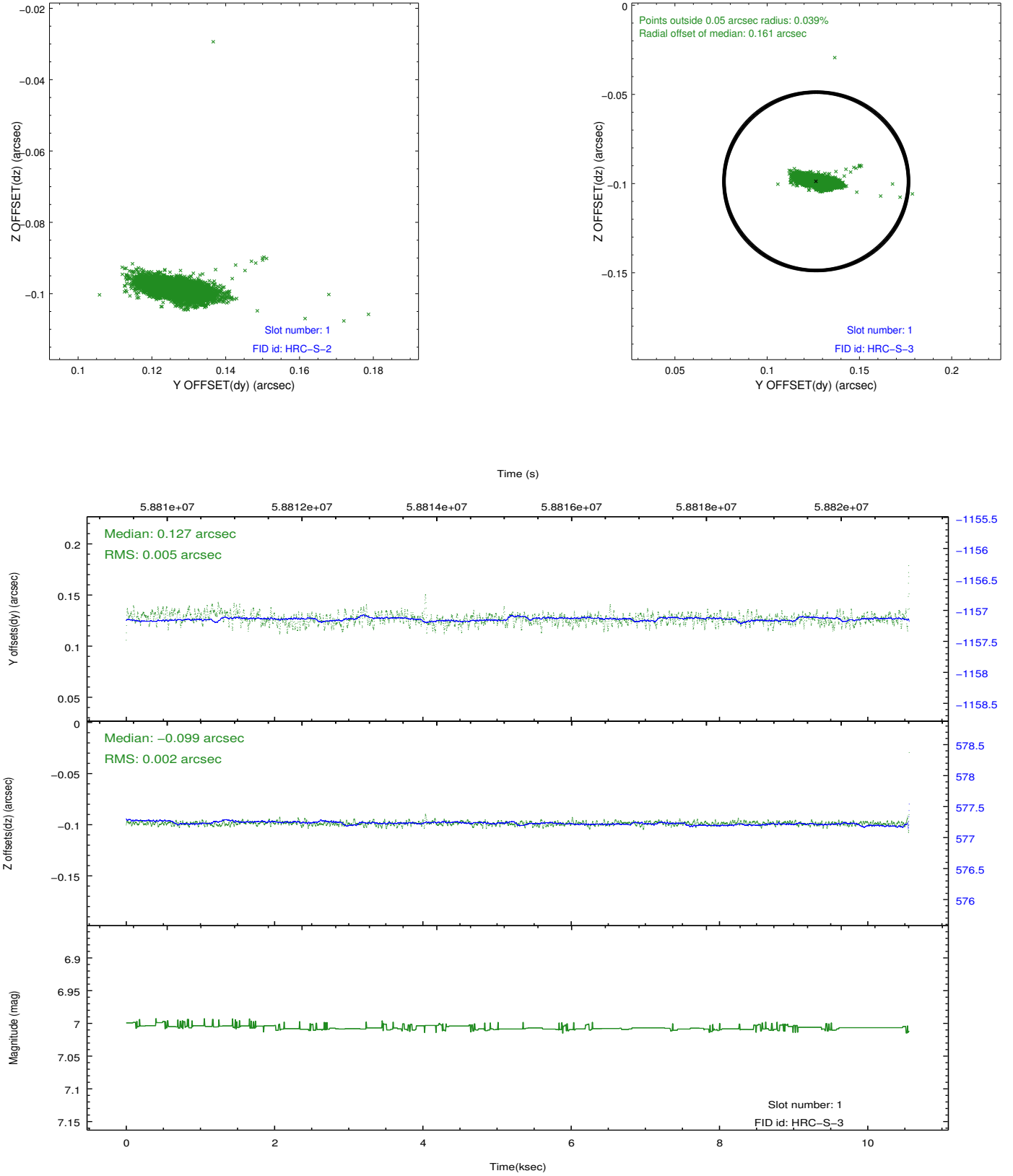


2.5 FID Slots

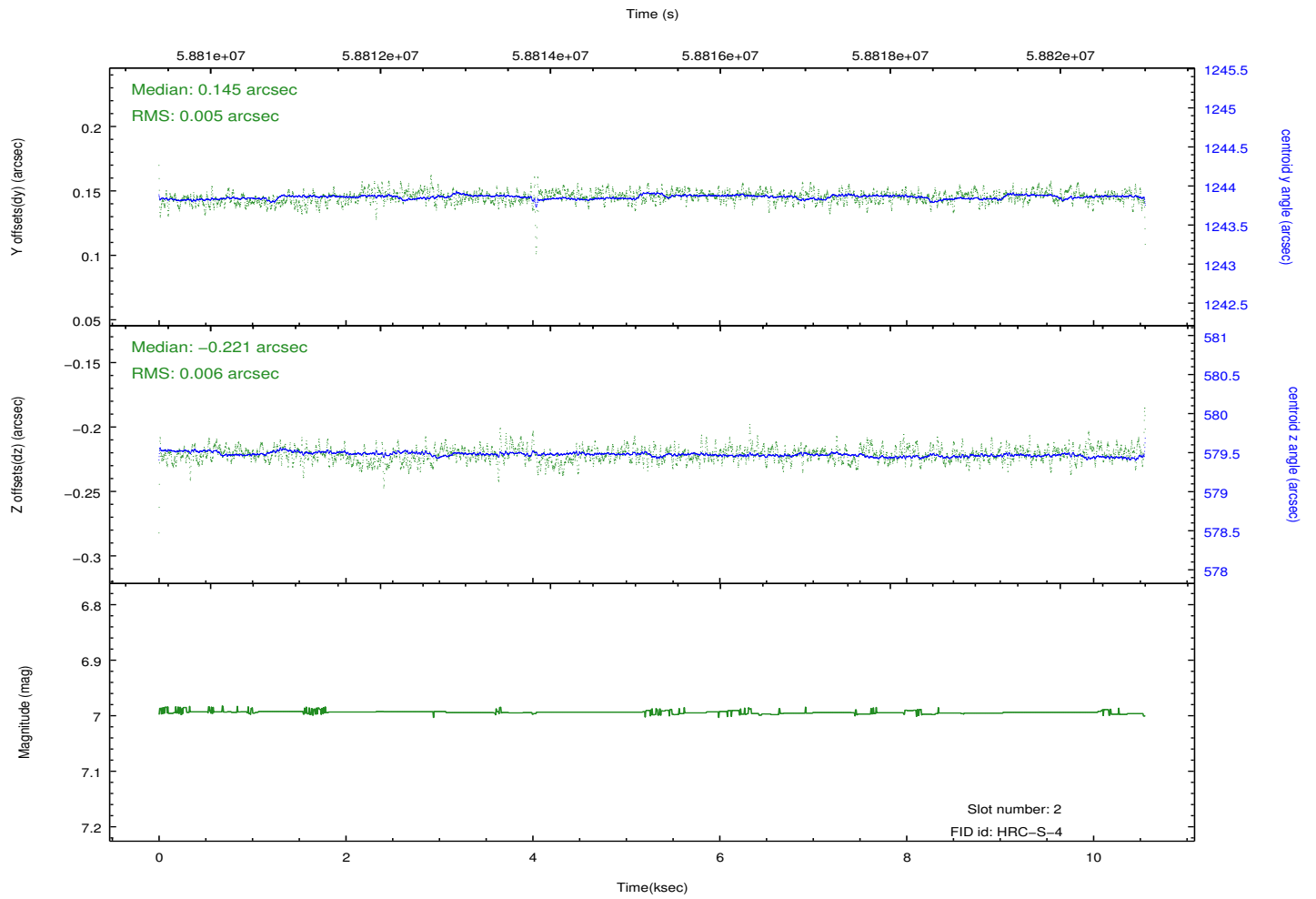
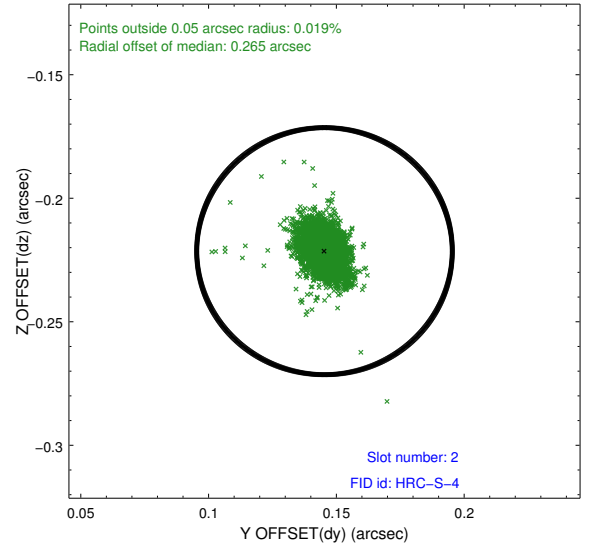
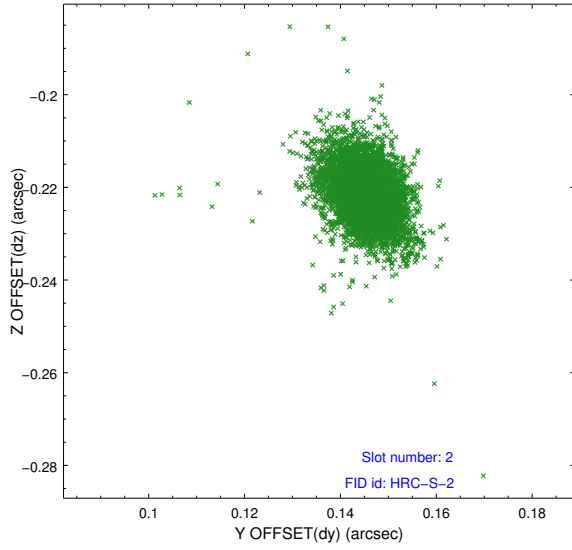
2.5.1 Slot 0



2.5.2 Slot 1

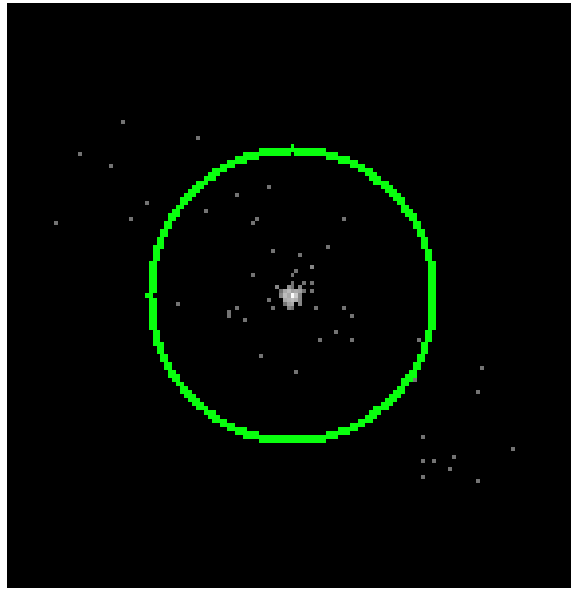


2.5.3 Slot 2

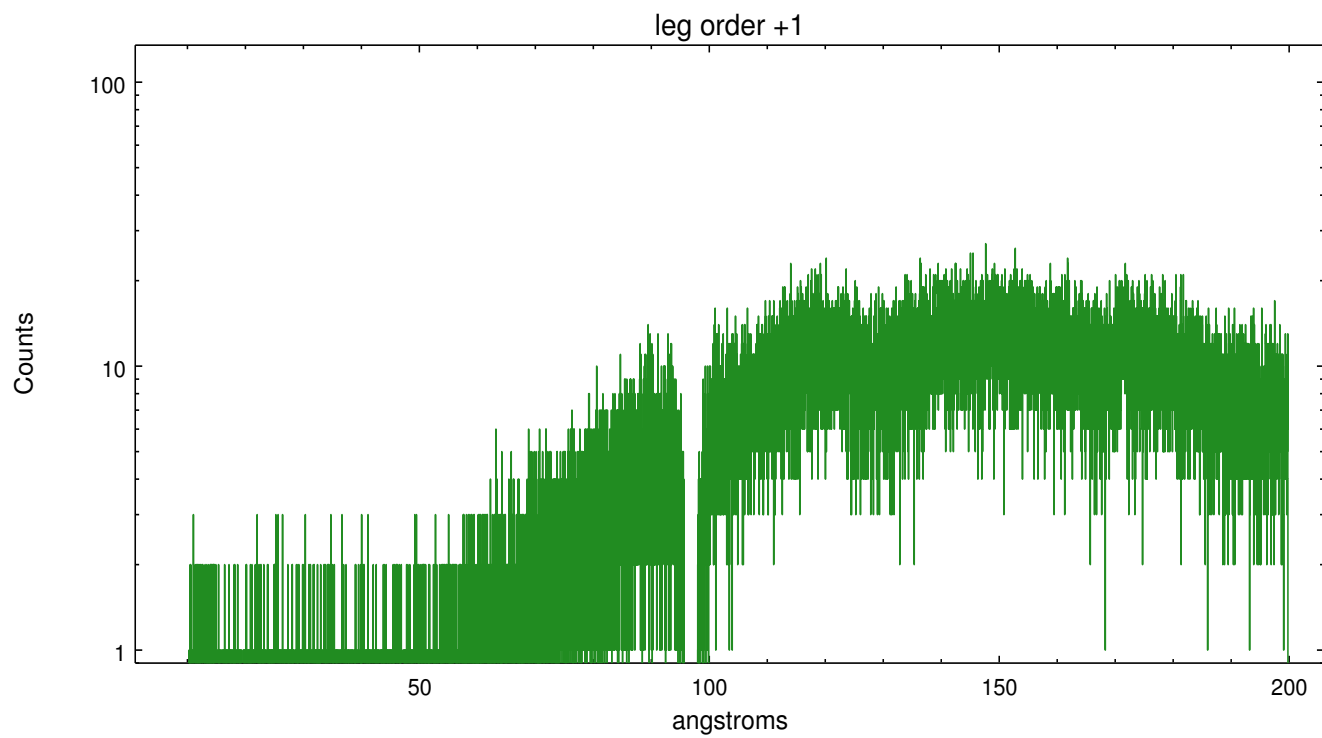
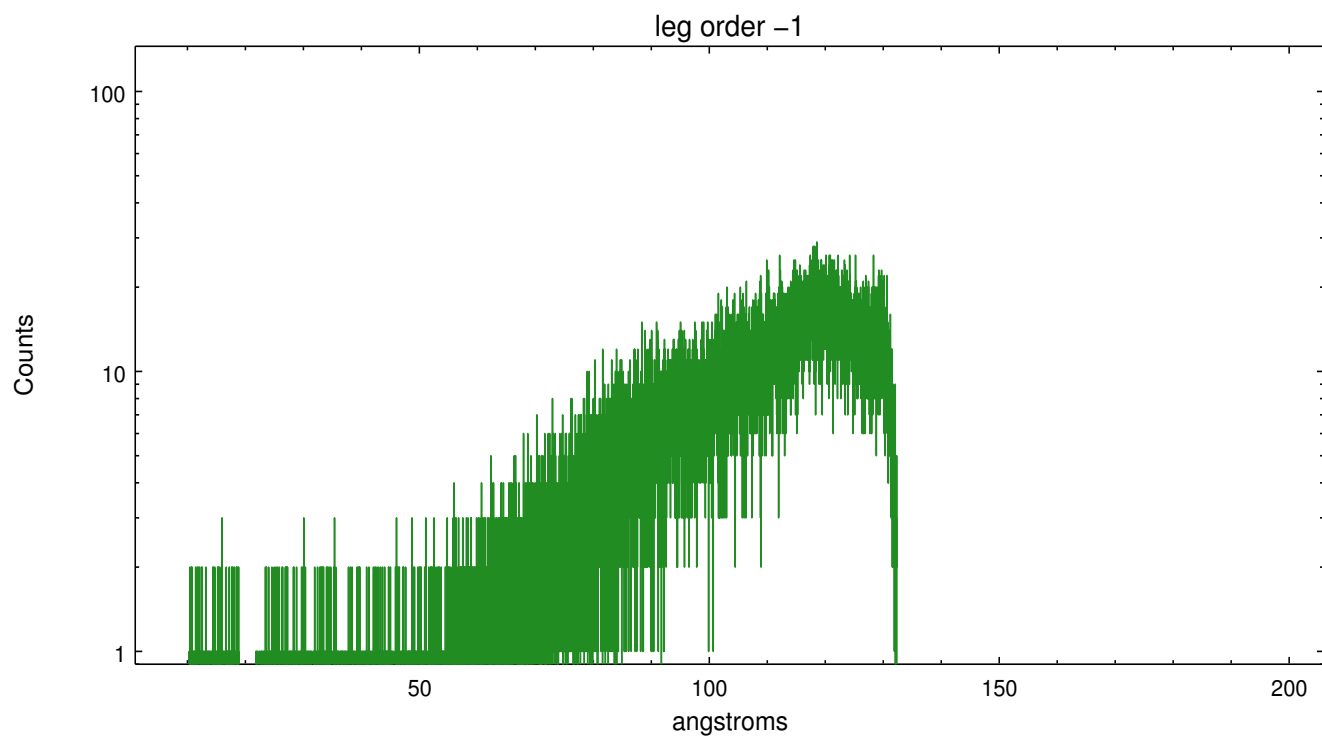


3 Gratings

3.1 LETG Arm



LETG Zero Order



A Summary

A.1 Status

V&V Scientist	Joy Nichols
V&V Date (YYYY-MM-DD)	2010.07.28
V&V Edition	1
V&V Disposition and Status	OK
V&V Charge Time	10.254

A.2 Comments

Target is off-axis. This results in an off-axis PSF as well as one spectral order being truncated at about 130 A while the other is extended to 200 A.

===

Charge time for this ObsId remains at original value of 10.254 ks, although with the current processing the charge time would have been 10.291 ksec.

===

Only 4 guide stars were available for this observation, instead of the usual 5.