

V&V Reference Report

L2 ASCDS Version : 8.4.5

Observation 11780 - L2 Version 2
Chandra X-Ray Center

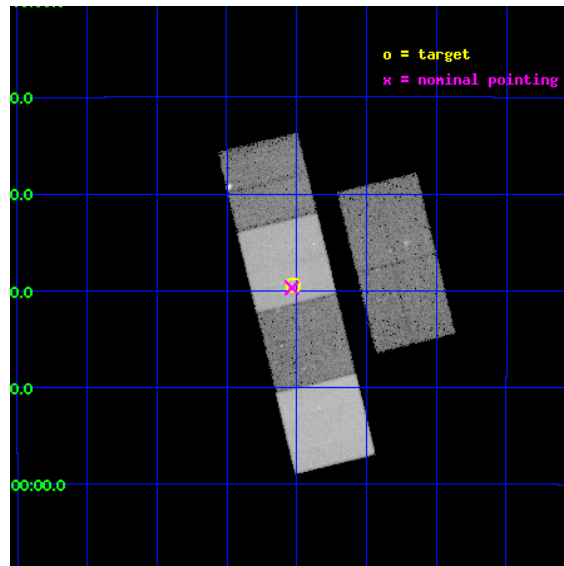
L2 Processing Date : Jun 25 2012

Contents

1	Front	2
2	OBI	3
2.1	OBI	3
2.1.1	Images	3
2.1.2	Bias	3
2.1.3	Parameters	4
2.1.4	Events	4
2.2	Compared Parameters	5
2.3	Aspect	6
2.4	Star Slots	9
2.4.1	Slot 3	9
2.4.2	Slot 4	10
2.4.3	Slot 5	11
2.4.4	Slot 6	12
2.4.5	Slot 7	13
2.5	FID Slots	14
2.5.1	Slot 0	14
2.5.2	Slot 1	15
2.5.3	Slot 2	16
A	Summary	17
A.1	Status	17
A.2	Comments	17

1 Front

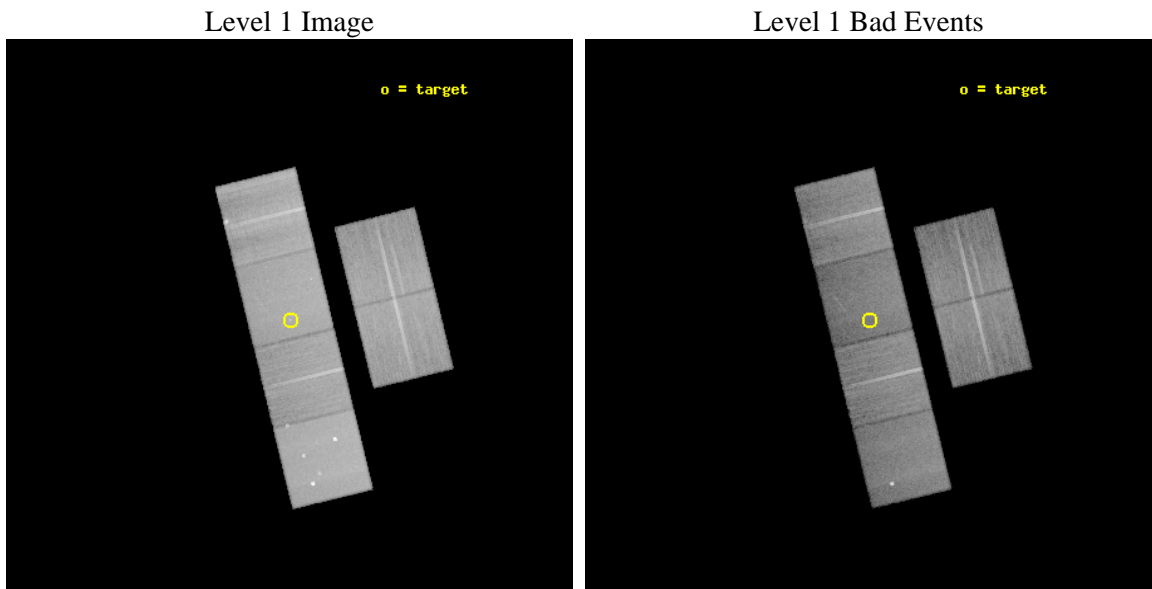
seq_num	900915	Sequence number
obs_id	11780	Observation id
title	COMBH: Chandra Observations of M-sigma Black Holes	Proposal title
observer	Dr. Kayhan Gultekin	Principal investigator
object	NGC5077	Source name
dtycycle	0	
cycle	P	events from which exps? Prim/Second/Both
ra_targ	199.882083	Observer's specified target RA [deg]
dec_targ	-12.656972	Observer's specified target Dec [deg]
ra_nom	199.88361746607	Nominal RA [deg]
dec_nom	-12.661567880415	Nominal Dec [deg]
roll_nom	256.24932753261	Nominal Roll [deg]
revision	2	Processing version of data
ontime	29046.399891853	Sum of GTIs [s]
livetime	28678.59688678	Livetime [s]
ontime2	29039.917821169	Sum of GTIs [s]
ontime3	29046.399891853	Sum of GTIs [s]
ontime5	29046.399891853	Sum of GTIs [s]
ontime6	29046.399891853	Sum of GTIs [s]
ontime7	29046.399891853	Sum of GTIs [s]
ontime8	29046.399891853	Sum of GTIs [s]
l2events	357269	Number of level 2 events



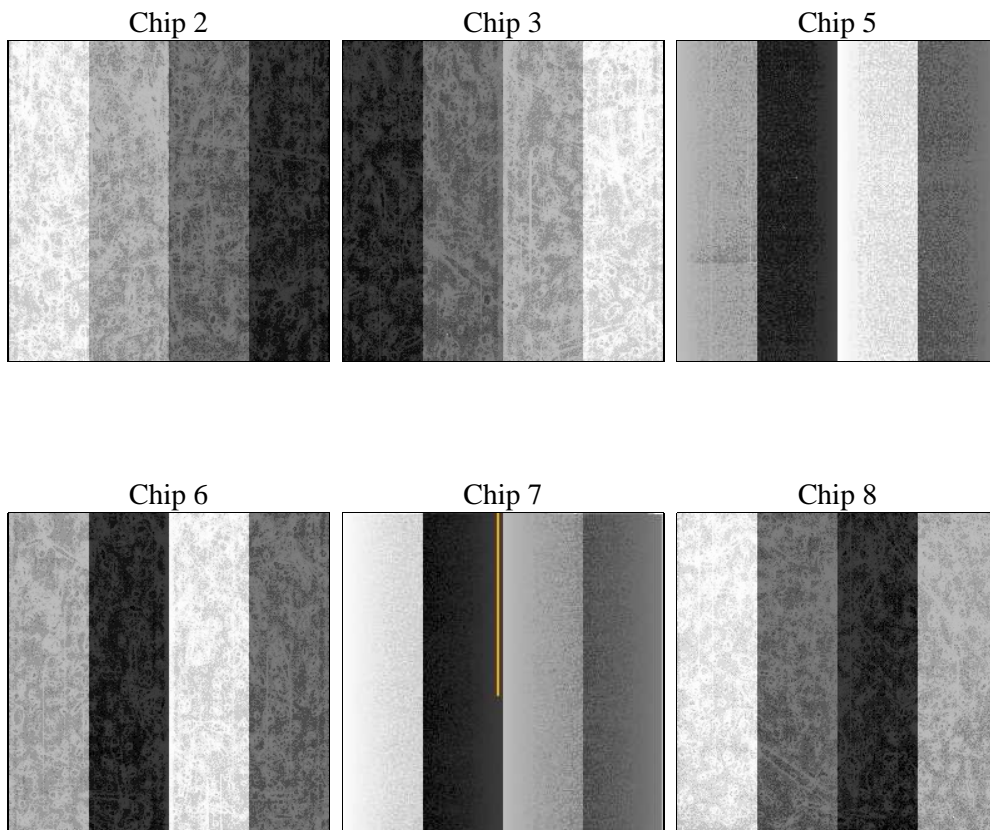
2 OBI

2.1 OBI

2.1.1 Images



2.1.2 Bias



2.1.3 Parameters

obi_num	0	Obi number	sched_exp_time	29000.000000	[s] Scheduled observation exposure time
ascdsver	8.4.5	Processing system revision	ontime	29046.399891853	Sum of GTIs [s]
caldbver	4.4.10	 	ontime2	29039.917821169	Sum of GTIs [s]
date	2012-06-25T11:01:10	Date and time of file creation	ontime3	29046.399891853	Sum of GTIs [s]
revision	2	Processing version of data	ontime5	29046.399891853	Sum of GTIs [s]
			ontime6	29046.399891853	Sum of GTIs [s]
			ontime7	29046.399891853	Sum of GTIs [s]
			ontime8	29046.399891853	Sum of GTIs [s]
			l1events	1562297	Number of level 1 events

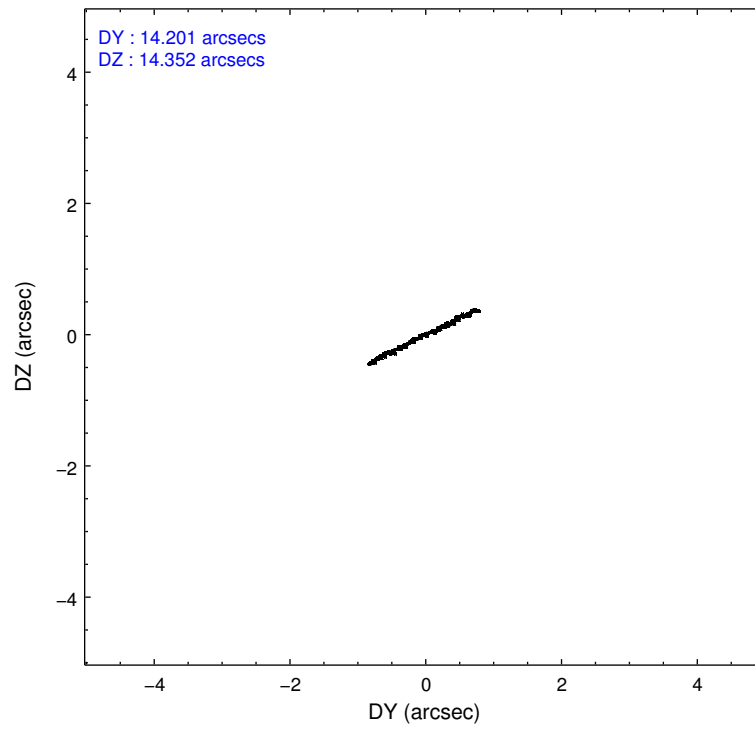
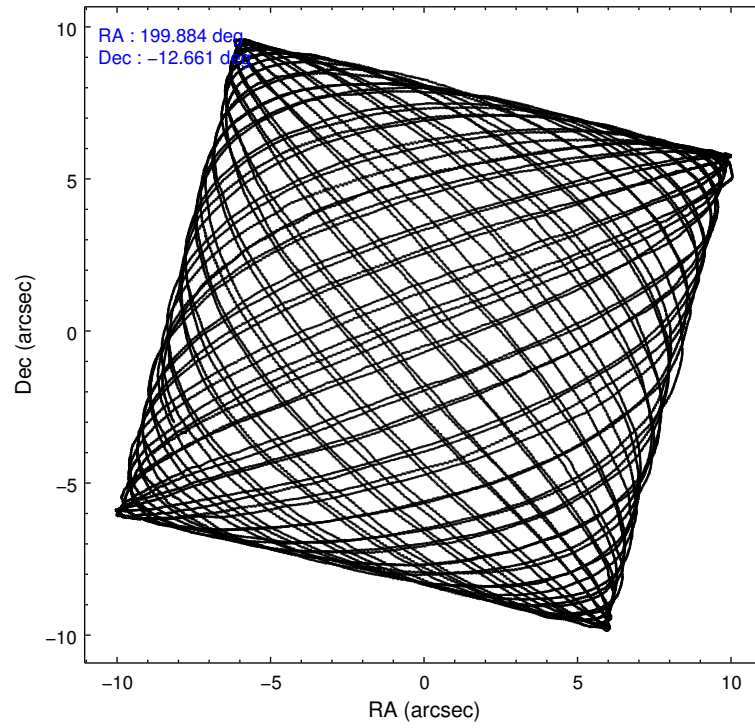
2.1.4 Events

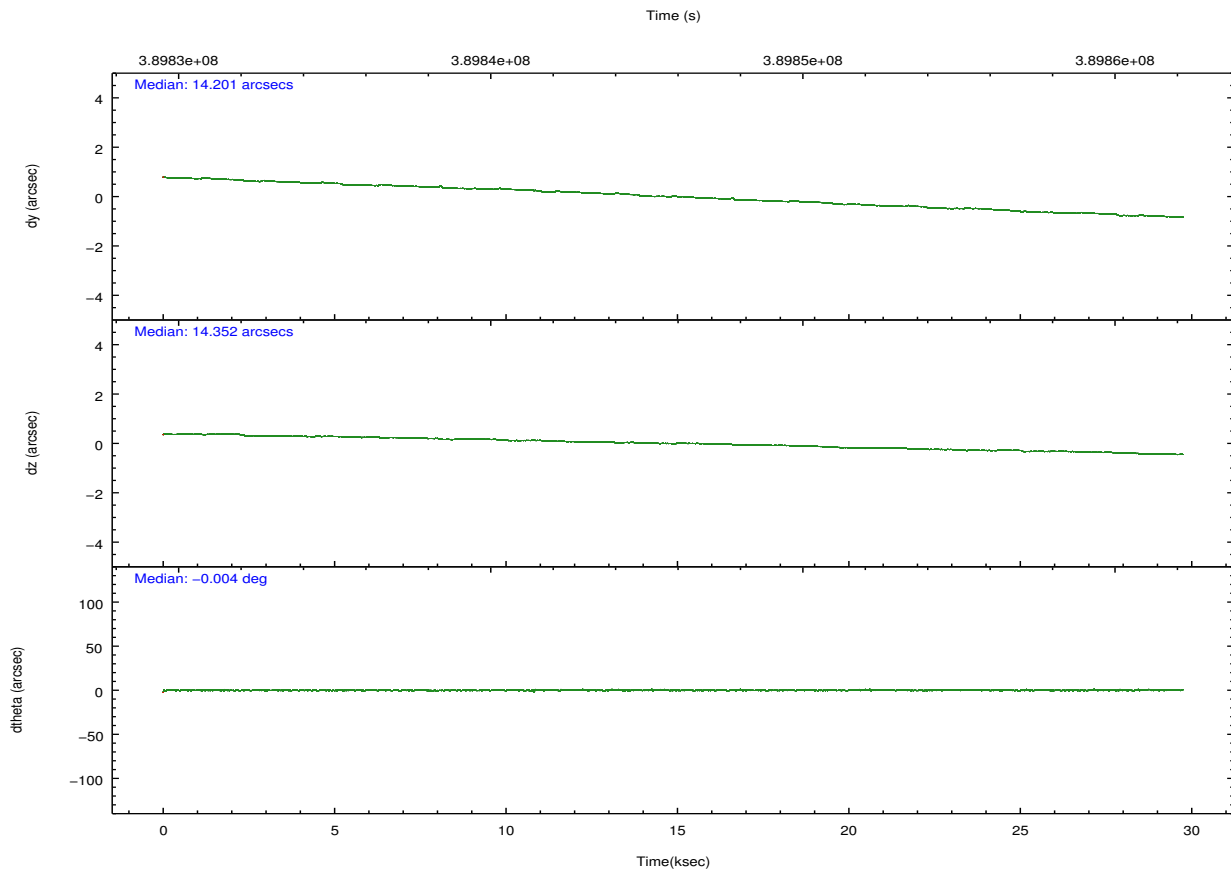
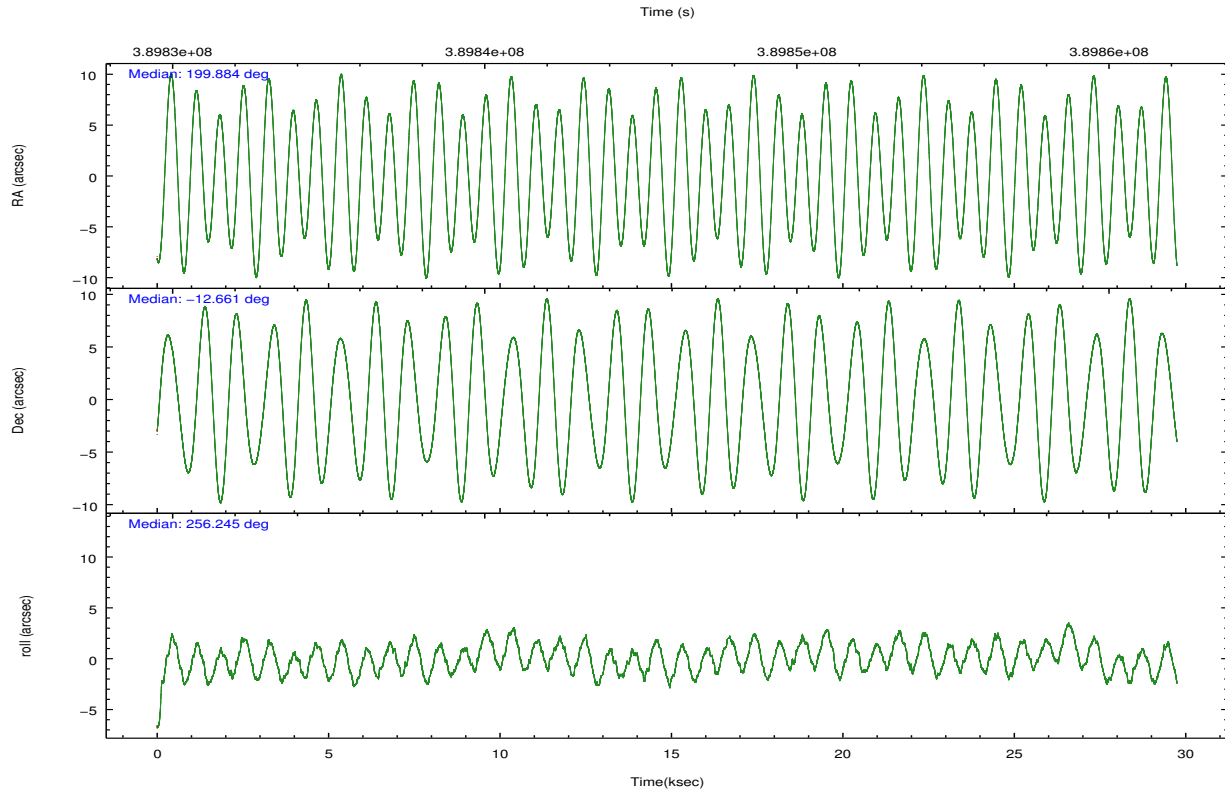
	ccd 2	ccd 3	ccd 5	ccd 6	ccd 7	ccd 8		ccd 2	ccd 3	ccd 5	ccd 6	ccd 7	ccd 8
level 1 events	229413	211257	338166	224351	270834	288276	grade 0 events	8420	7880	21156	9134	11849	22334
rejected events	206154	189283	168889	199225	147551	214484		3%	3%	6%	4%	4%	7%
rejected %	89%	89%	49%	88%	54%	74%	grade 1 events	141	114	628	105	370	245
								0%	0%	0%	0%	0%	0%
							grade 2 events	5694	4811	49990	5532	25461	16895
								2%	2%	14%	2%	9%	5%
							grade 3 events	2399	2417	6709	2623	11001	8016
								1%	1%	1%	1%	4%	2%
							grade 4 events	2378	2314	5688	2512	10652	7306
								1%	1%	1%	1%	3%	2%
							grade 5 events	8537	9858	26481	9763	27417	14225
								3%	4%	7%	4%	10%	4%
							grade 6 events	4372	4558	85774	5332	64350	19275
								1%	2%	25%	2%	23%	6%
							grade 7 events	197472	179305	141740	189350	119734	199980
								86%	84%	41%	84%	44%	69%

2.2 Compared Parameters

Parameter	Planned	Actual	Parameter	Planned	Actual
Instrument	ACIS	ACIS	Obspar format version number	7	7
Detector	ACIS-235678	ACIS-235678	Obspar file type	PREDICTED	ACTUAL
Grating	NONE	NONE	Obspar update status	NONE	UPDATED
Data mode	FAINT	FAINT	CCD I0 on	N	N
Observation mode	POINTING	POINTING	CCD I1 on	N	N
[deg] Pointing RA	199.875408	199.8836174660666	CCD I2 on	O1	Y
[deg] Pointing Dec	-12.635444	-12.66156788041493	CCD I3 on	O2	Y
[deg] Pointing Roll	256.090895	256.2493275326066	CCD S0 on	N	N
[mm] SIM focus pos	-0.684267	-0.6828225247311905	CCD S1 on	Y	Y
[mm] SIM defocus	0	0.001444936568705701	CCD S2 on	Y	Y
[mm] SIM translation stage pos	-190.132523	-190.1425803651734	CCD S3 on	Y	Y
[mm] SIM translation stage offset	0	0.01005778216563158	CCD S4 on	Y	Y
[s] Observation start time (MET)	389831718.184000	389830435.43927	CCD S5 on	N	N
Observation start date	2010-05-09T22:34:12	2010-05-09T22:13:55	Number of optional ACIS chips dropped	0	0
[s] Observation end time (MET)	389860718.184000	389861463.72835	On-chip summing requested	N	N
Observation end date	2010-05-10T06:37:32	2010-05-10T06:51:03	Subarray requested	NONE	NONE
Read mode	TIMED	TIMED	Alternating exposures requested	N	N
			[s] Primary exposure time	0.000000	3.2

2.3 Aspect



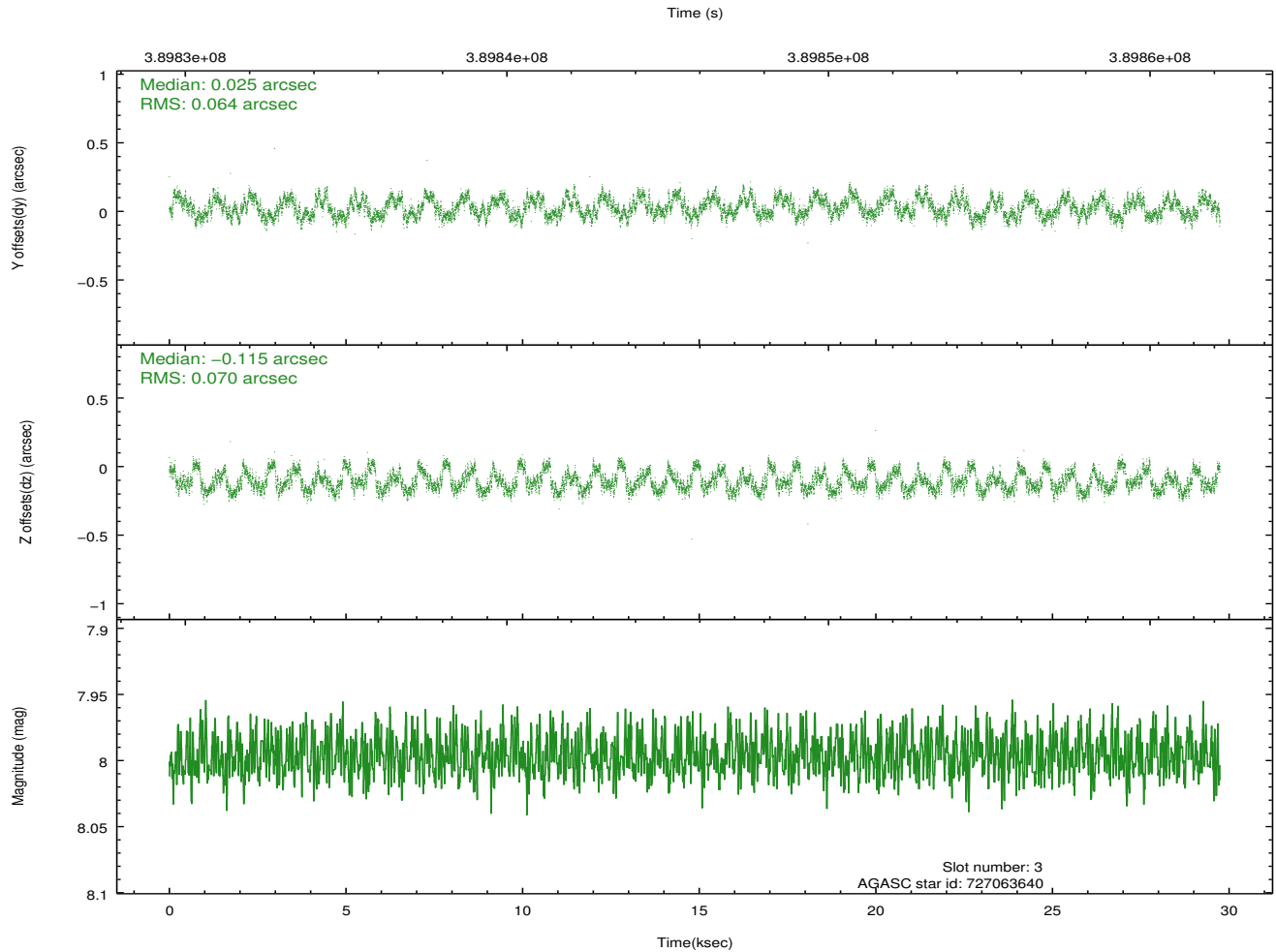
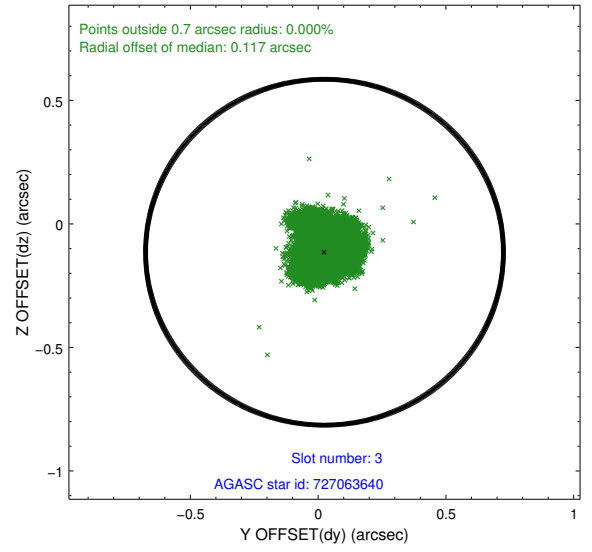
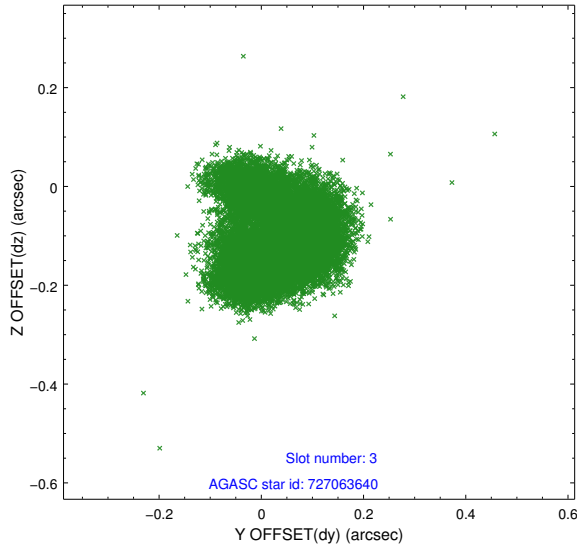


Slot Statistics

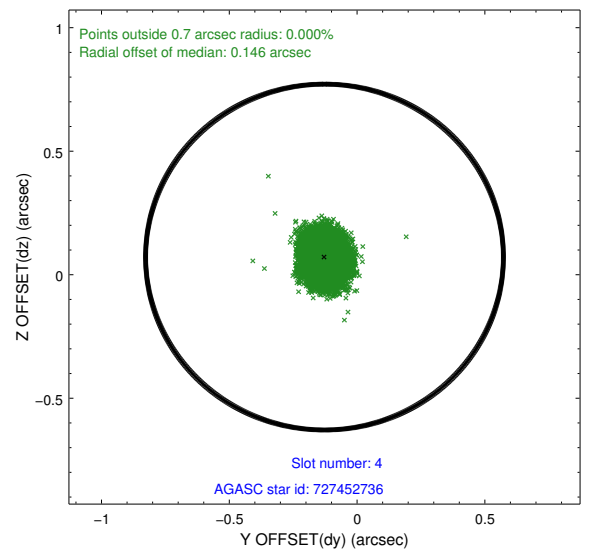
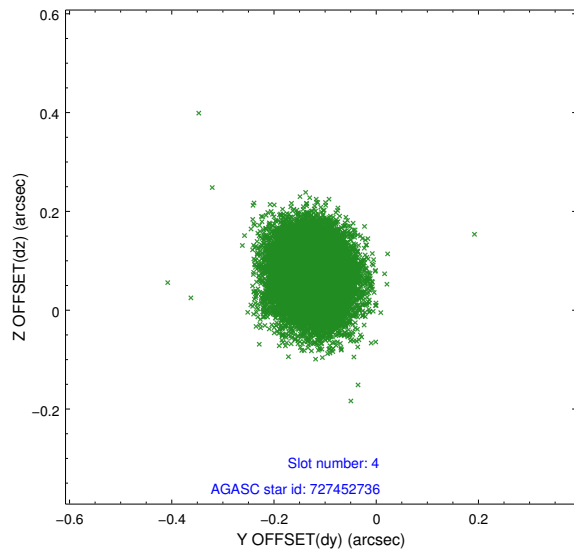
slot	status	id	mag	n_pts	med_dy	med_dz	dr1	dr2	ra	dec	mean_y	mean_z
0	FID	ACIS-S-2	6.95	7255	-0.074	-0.053	0.025	0.035	0.000000	0.000000	-767.20	-1735.71
1	FID	ACIS-S-4	7.03	7255	0.204	0.049	0.024	0.035	0.000000	0.000000	2146.31	172.81
2	FID	ACIS-S-5	7.06	7255	-0.161	0.010	0.013	0.025	0.000000	0.000000	-1820.04	166.51
3	GUIDE	727063640	8.00	14506	0.025	-0.115	0.105	0.154	199.708323	-12.015491	-2024.18	-1107.62
4	GUIDE	727452736	8.29	14500	-0.127	0.071	0.070	0.110	199.300725	-12.525956	106.32	-2055.39
5	GUIDE	727453000	7.66	14508	-0.001	-0.110	0.081	0.124	199.243527	-13.158839	2365.00	-1696.87
6	GUIDE	727454184	8.87	14498	0.056	0.133	0.073	0.118	199.706716	-13.195834	2102.12	-89.12
7	GUIDE	727067544	8.97	14500	0.043	0.012	0.091	0.141	200.001263	-12.469999	-683.47	286.02

2.4 Star Slots

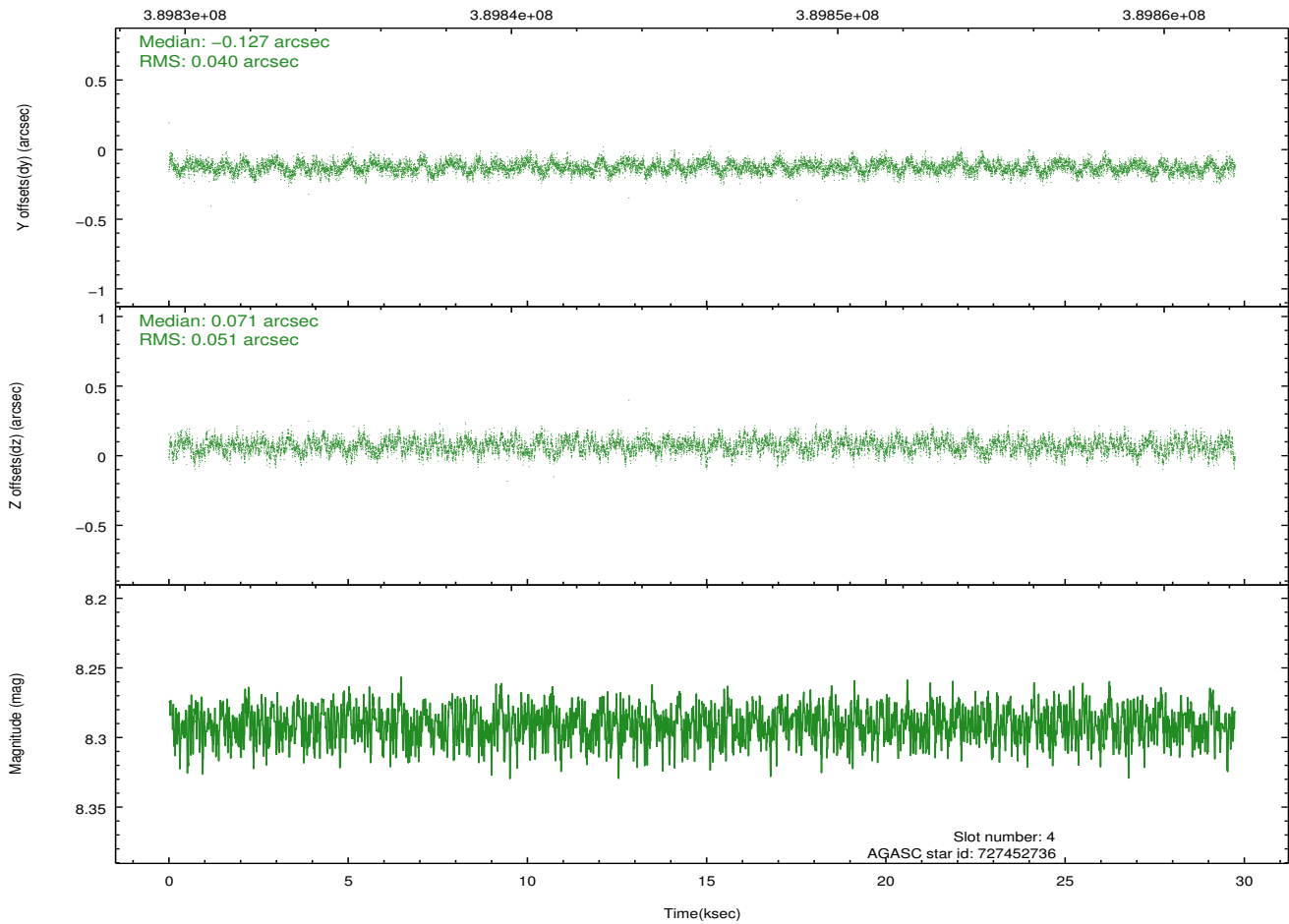
2.4.1 Slot 3



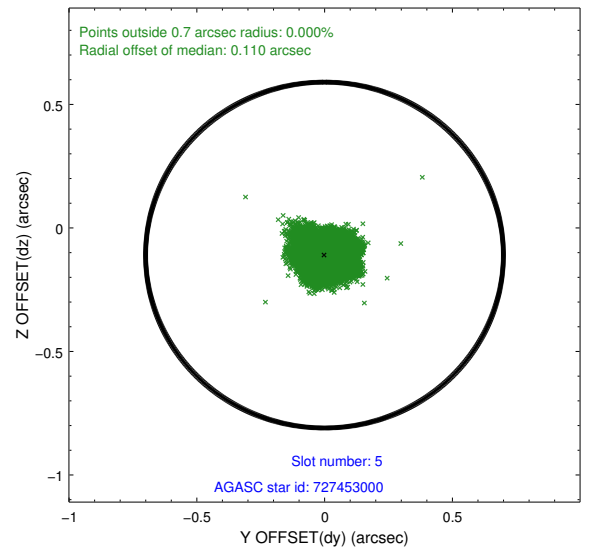
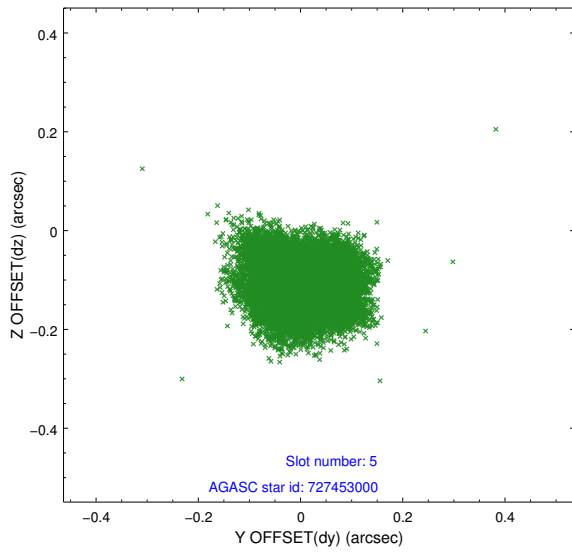
2.4.2 Slot 4



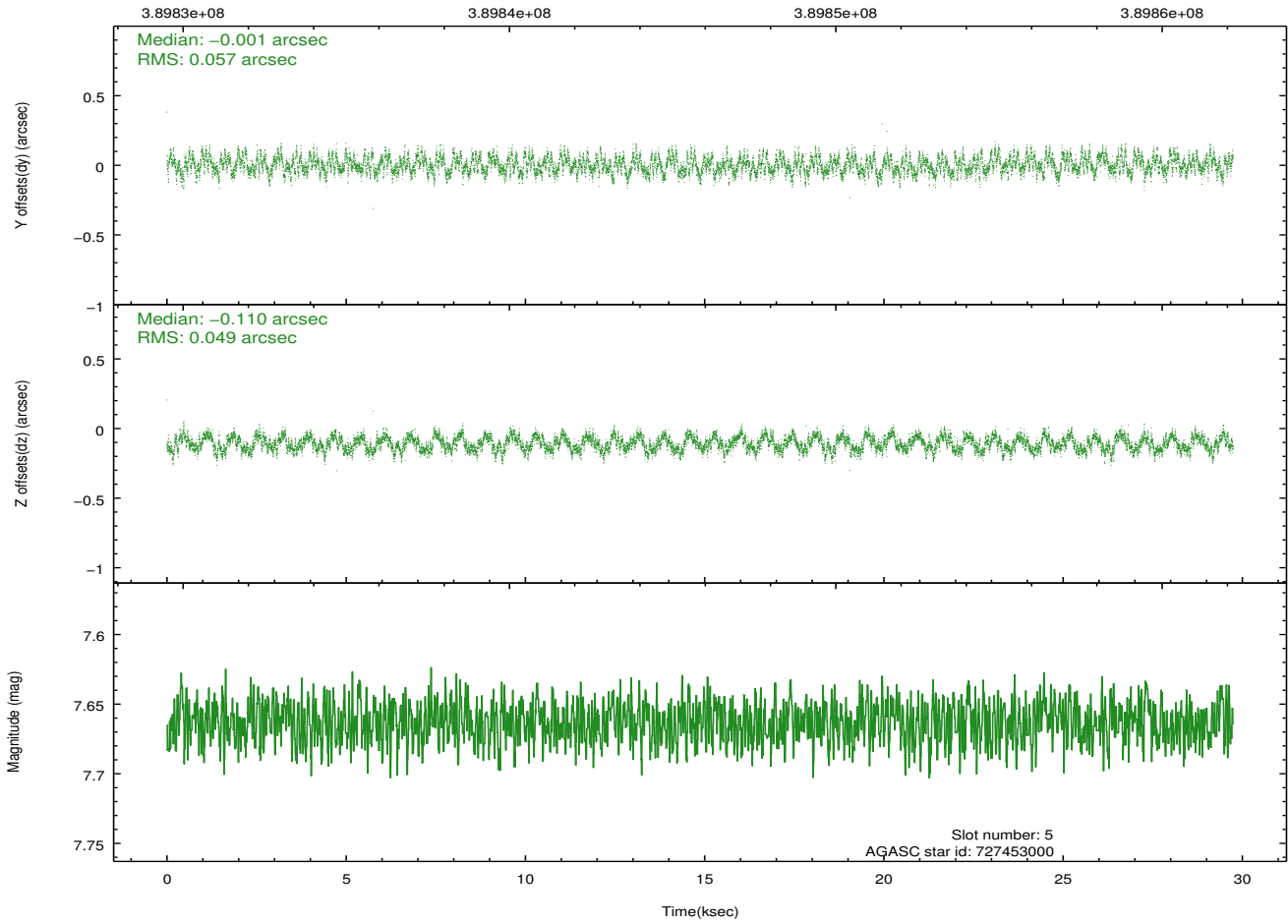
Time (s)



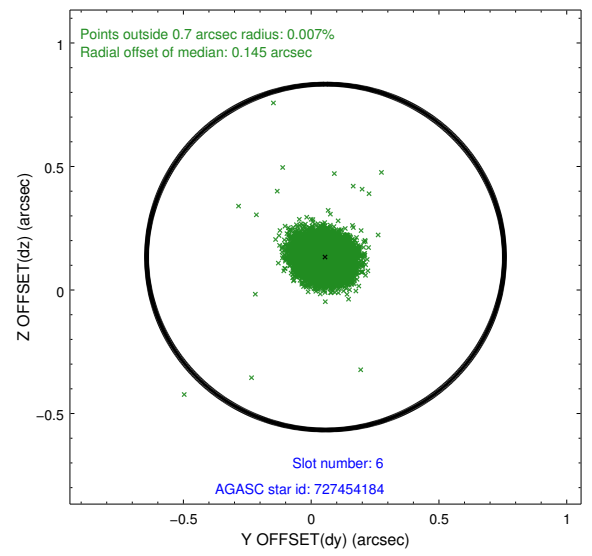
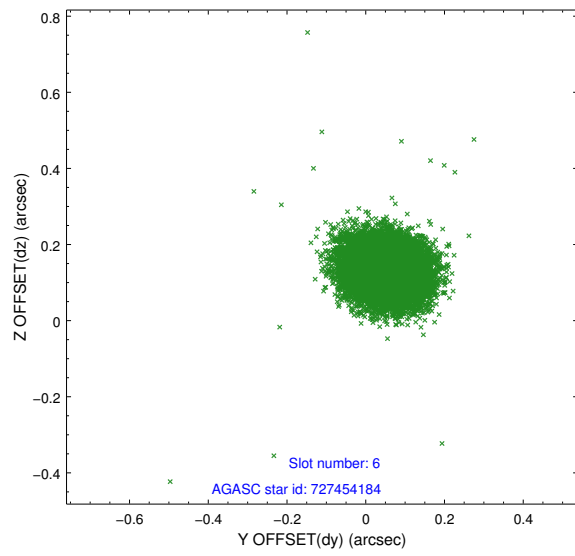
2.4.3 Slot 5



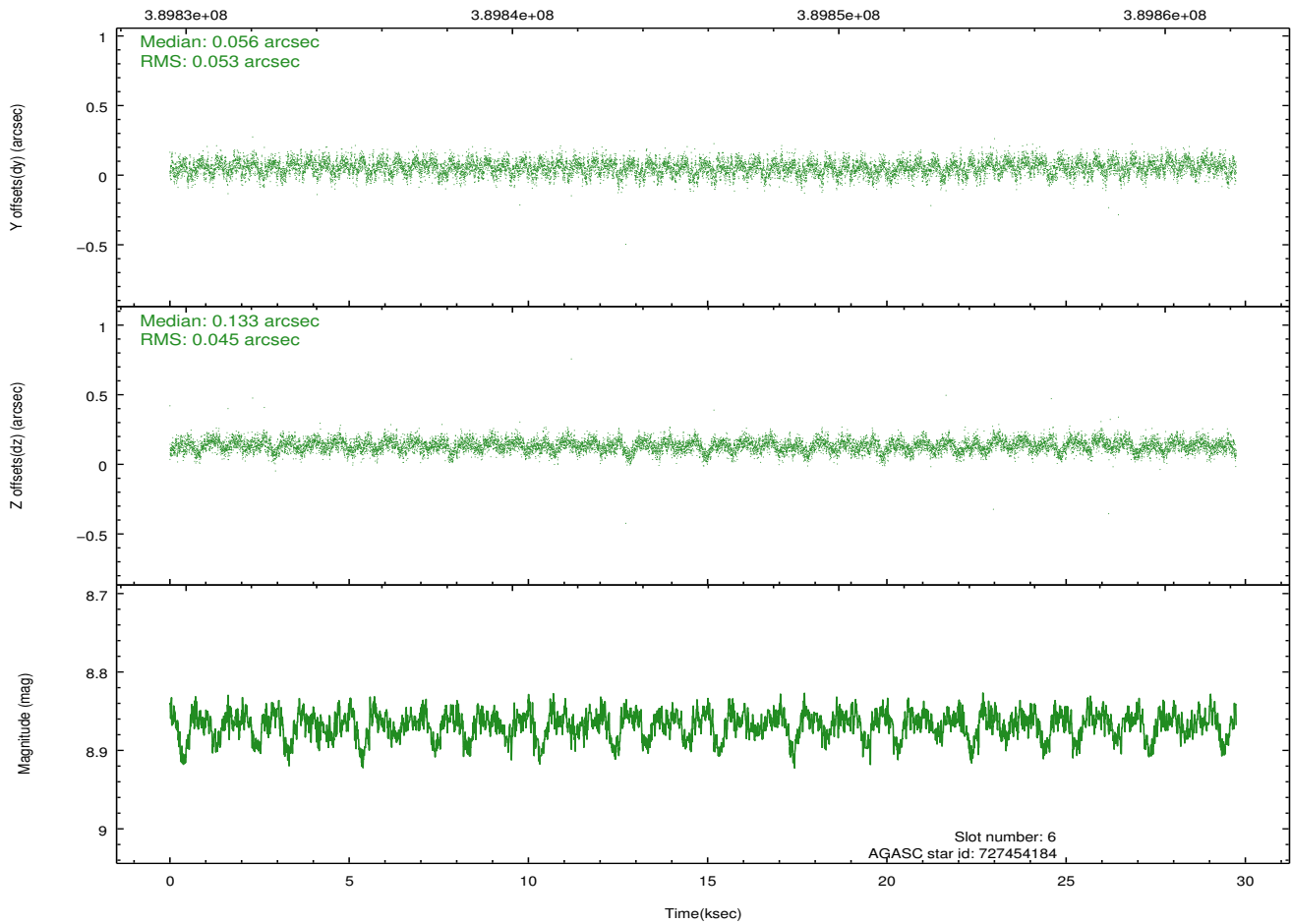
Time (s)



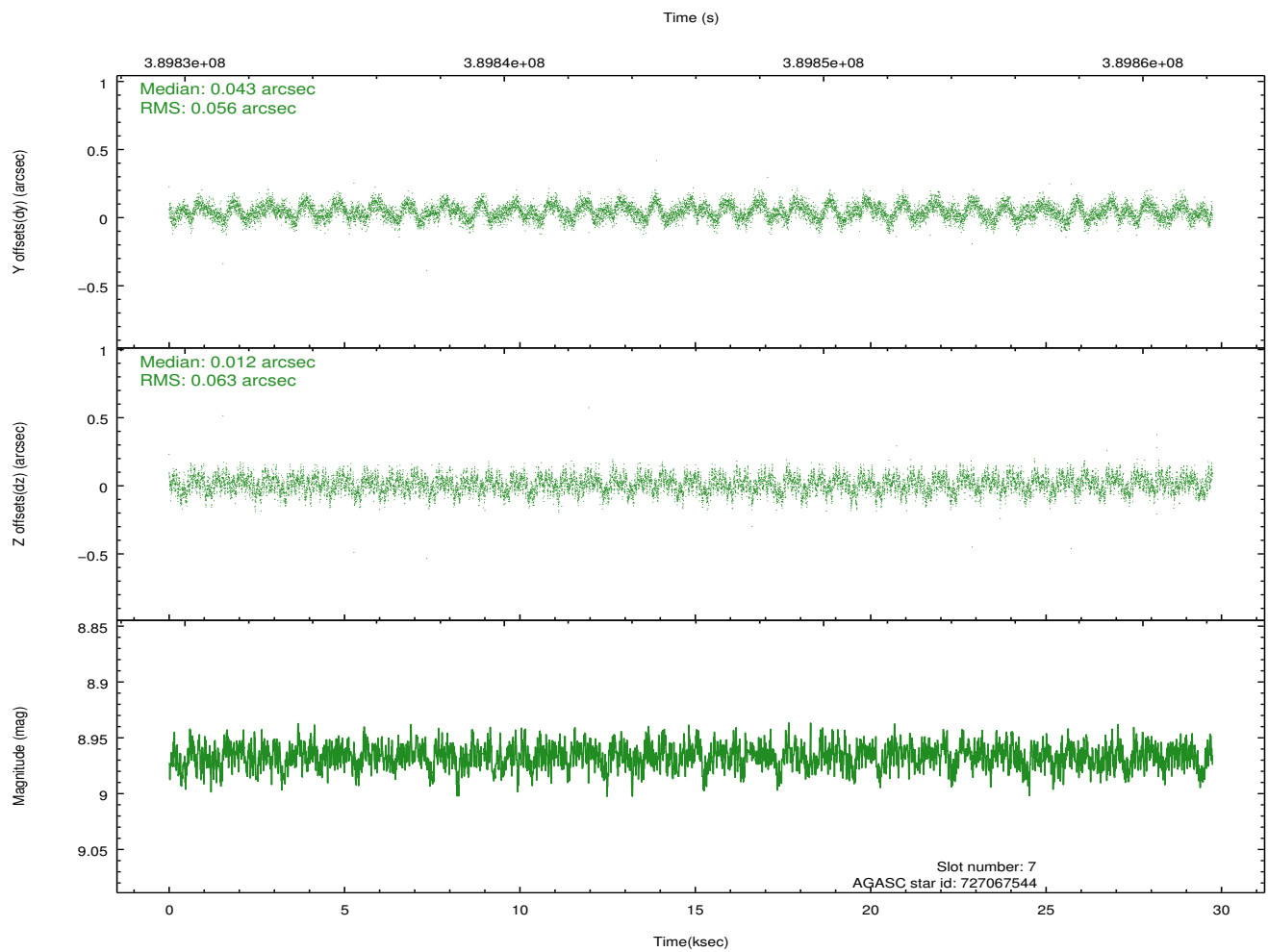
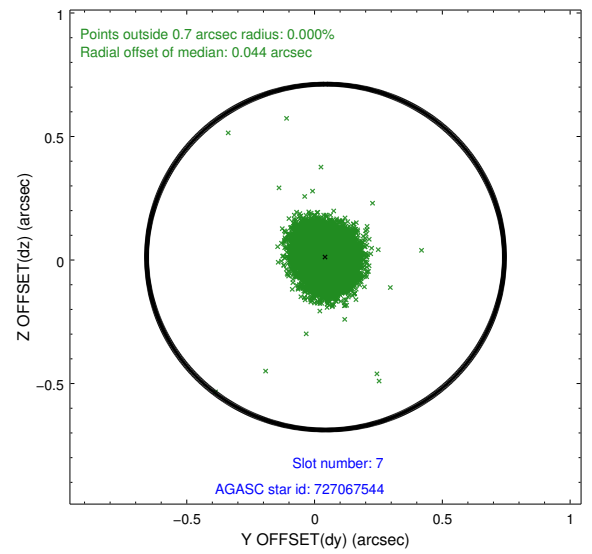
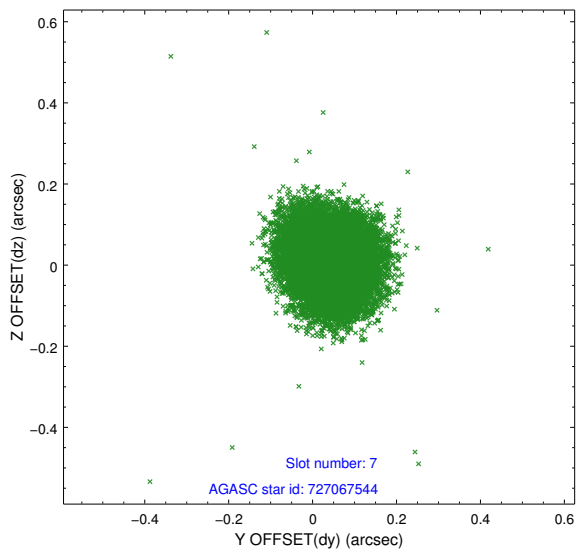
2.4.4 Slot 6



Time (s)

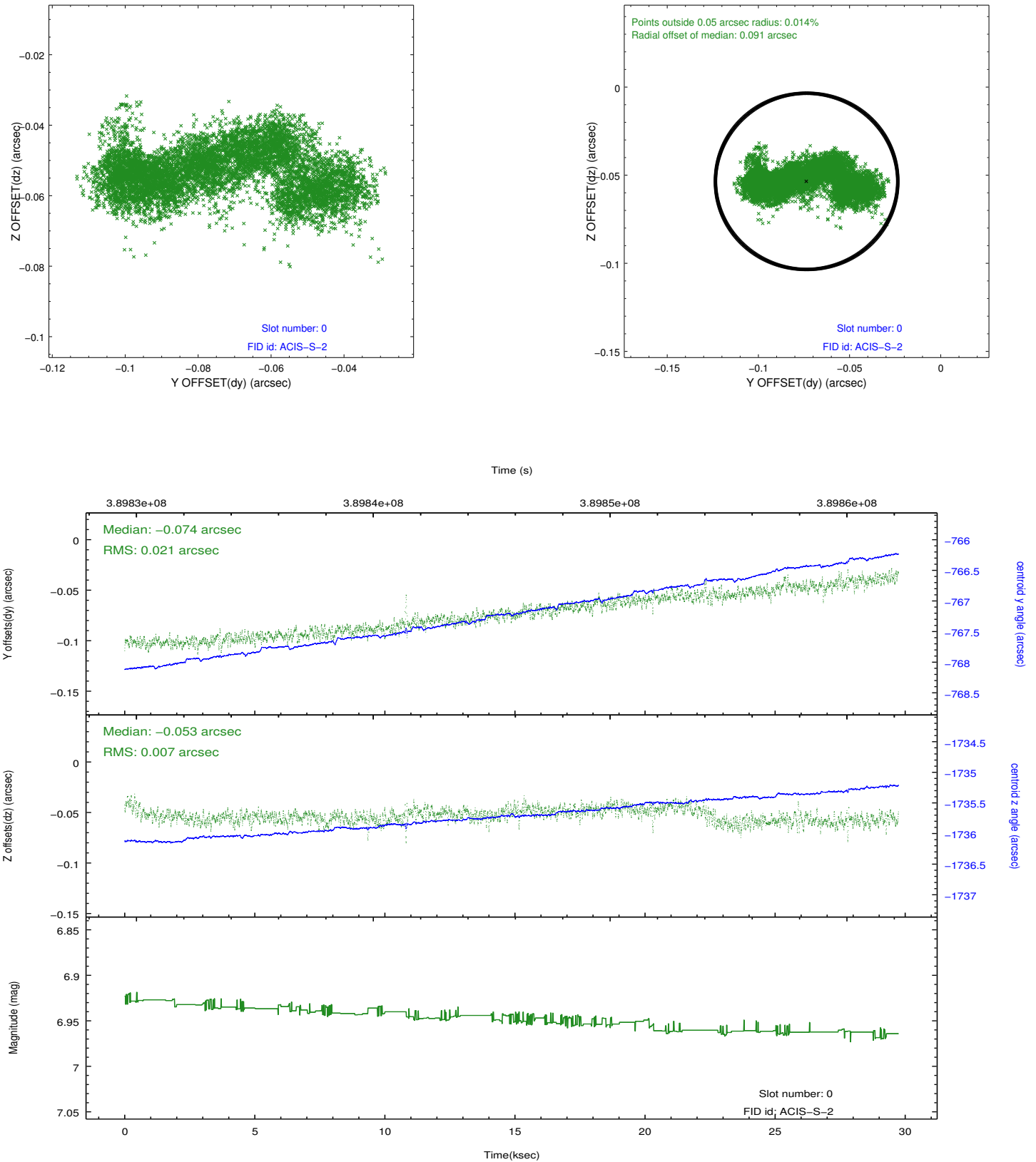


2.4.5 Slot 7

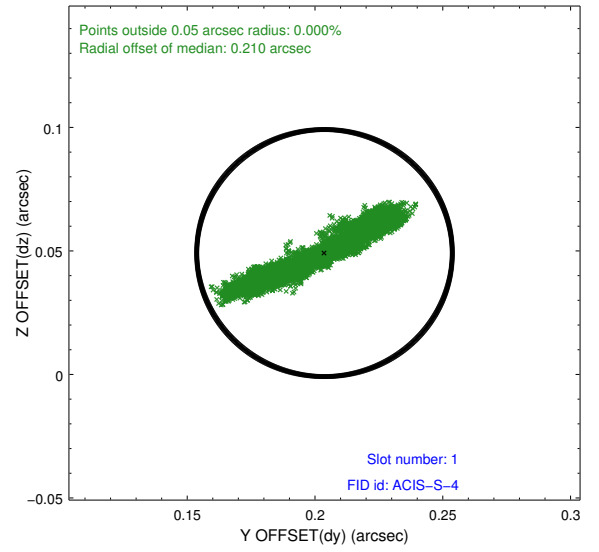
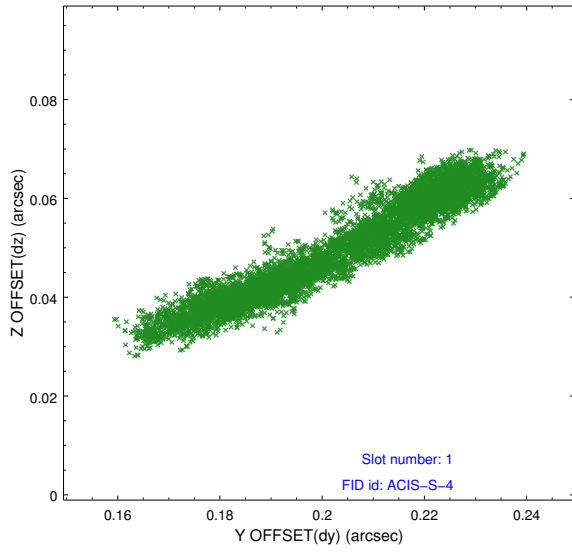


2.5 FID Slots

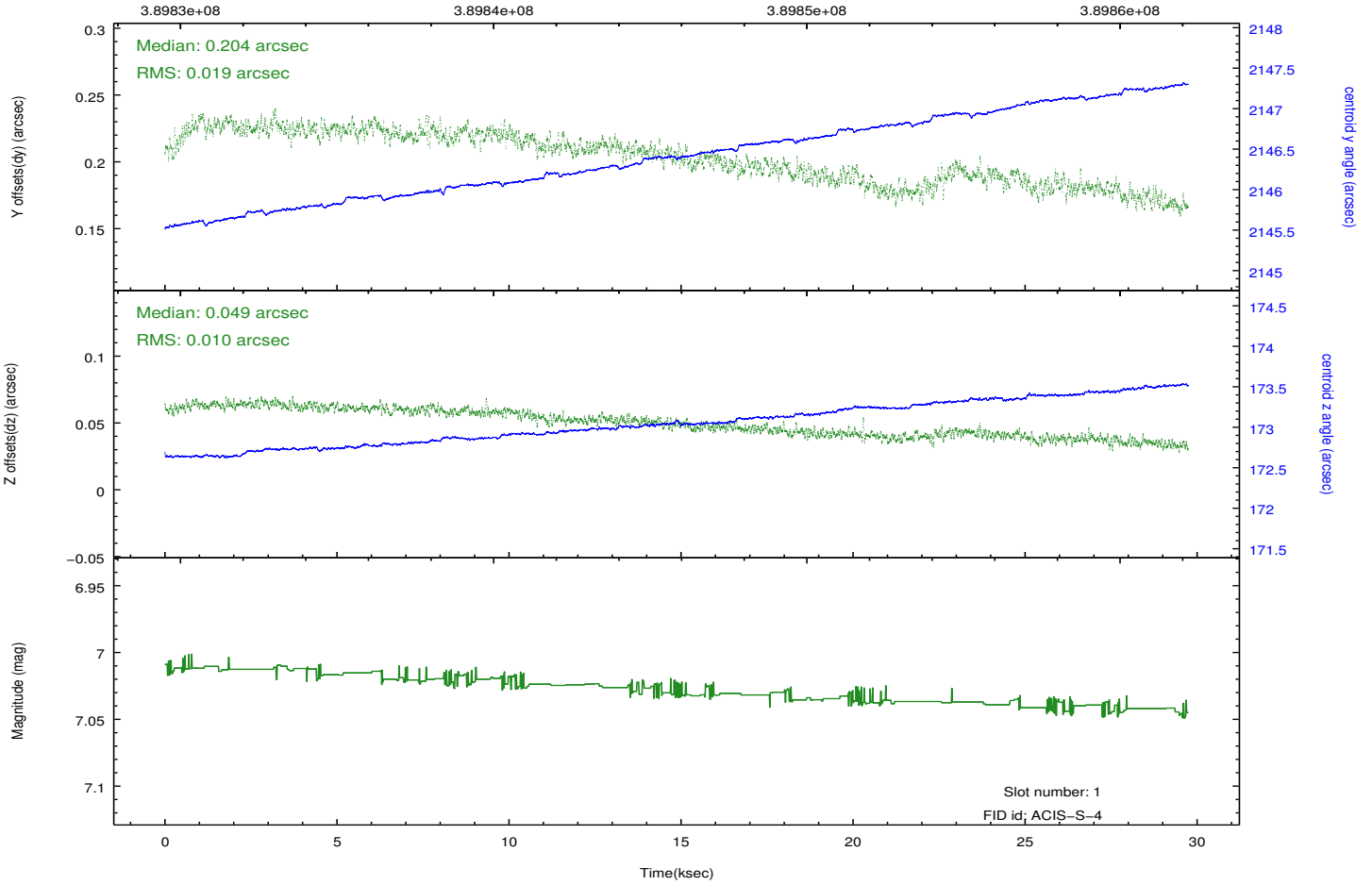
2.5.1 Slot 0



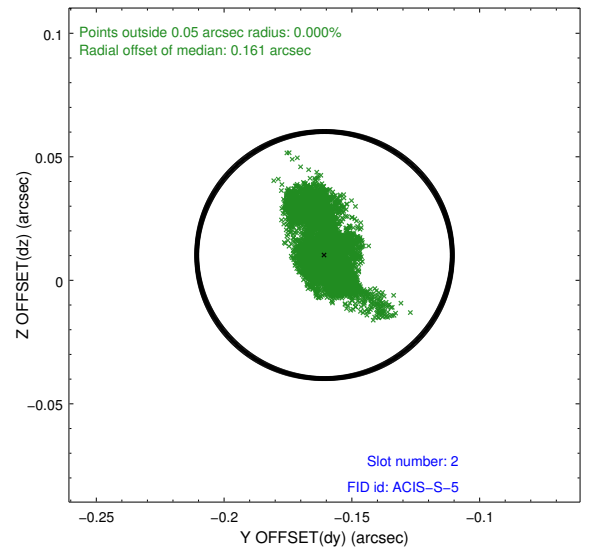
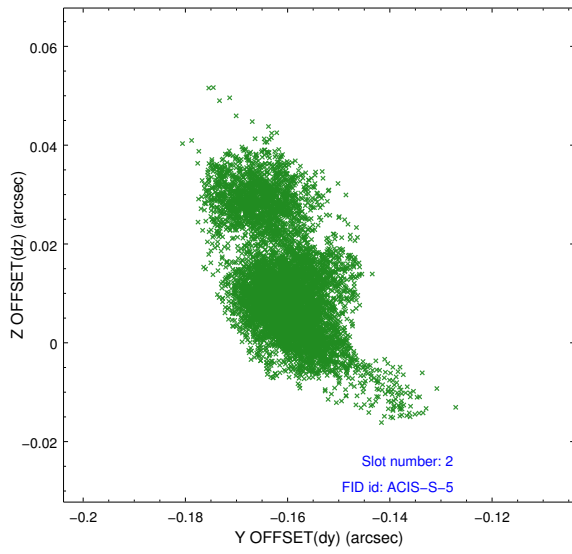
2.5.2 Slot 1



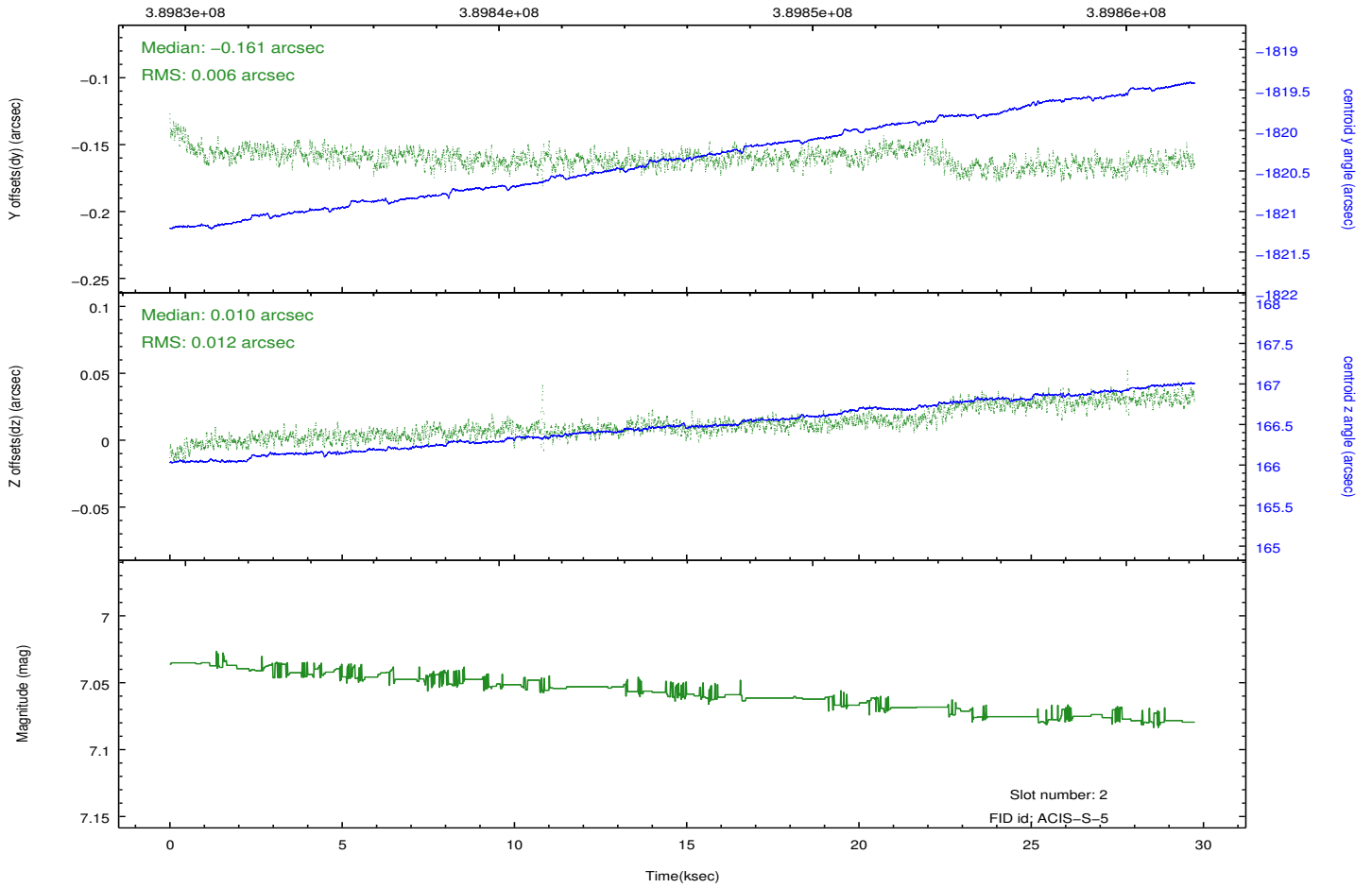
Time (s)



2.5.3 Slot 2



Time (s)



A Summary

A.1 Status

V&V Scientist	Jen Lauer
V&V Date (YYYY-MM-DD)	2012.07.02
V&V Edition	1
V&V Disposition and Status	OK
V&V Charge Time	29.046399891853

A.2 Comments

Joint proposal: NRAO.