

V&V Reference Report

L2 ASCDS Version : 8.4.5

Observation 11870 - L2 Version 2
Chandra X-Ray Center

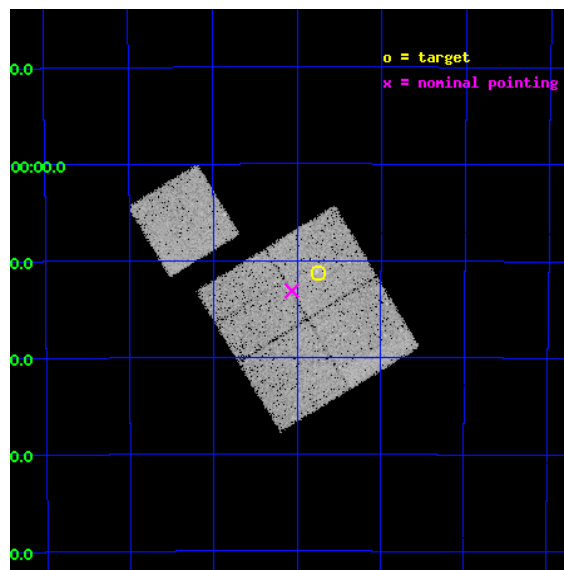
L2 Processing Date : Jun 14 2012

Contents

1	Front	2
2	OBI	3
2.1	OBI	3
2.1.1	Images	3
2.1.2	Bias	3
2.1.3	Parameters	4
2.1.4	Events	4
2.2	Compared Parameters	5
2.3	Aspect	6
2.4	Star Slots	9
2.4.1	Slot 3	9
2.4.2	Slot 4	10
2.4.3	Slot 5	11
2.4.4	Slot 6	12
2.4.5	Slot 7	13
2.5	FID Slots	14
2.5.1	Slot 0	14
2.5.2	Slot 1	15
2.5.3	Slot 2	16
A	Summary	17
A.1	Status	17
A.2	Comments	17

1 Front

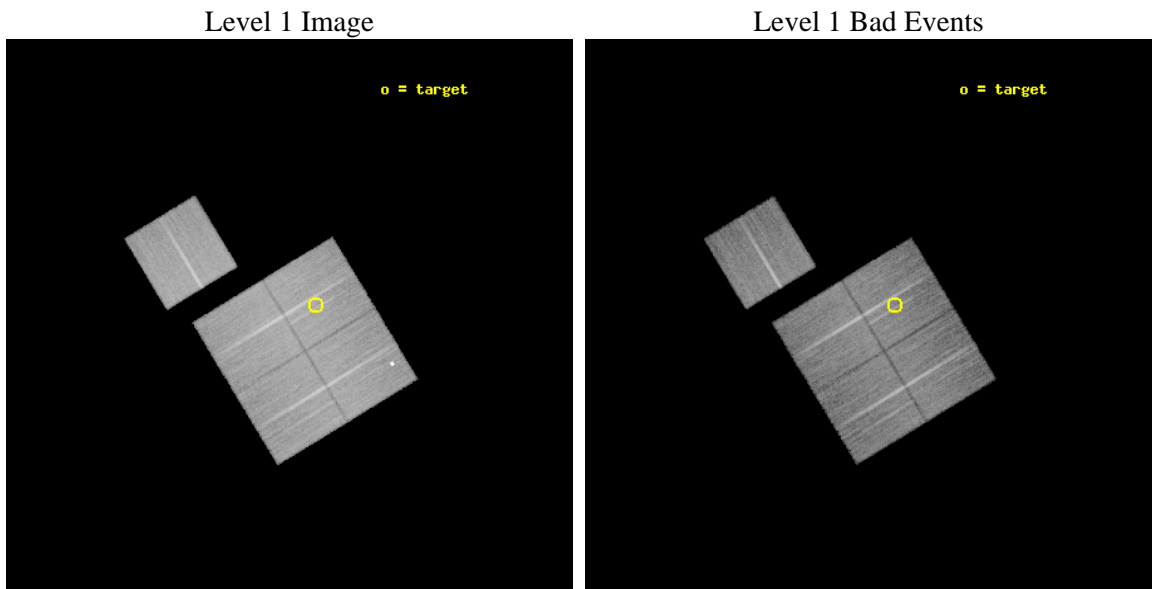
seq_num	800924	Sequence number
obs_id	11870	Observation id
title	A Chandra Study of a Complete Sample of SZE Selected Galaxy Clusters	
observer	Dr. Stephen Murray	Principal investigator
object	SPT2343-5411	Source name
dtcycle	0	
cycle	P	events from which exps? Prim/Second/Both
ra_targ	355.687917	Observer's specified target RA [deg]
dec_targ	-54.189	Observer's specified target Dec [deg]
ra_nom	355.76561944118	Nominal RA [deg]
dec_nom	-54.218845685159	Nominal Dec [deg]
roll_nom	328.75734244353	Nominal Roll [deg]
revision	2	Processing version of data
ontime	20037.315975964	Sum of GTIs [s]
livetime	19775.513691481	Livetime [s]
ontime0	20040.333856225	Sum of GTIs [s]
ontime1	20034.092905581	Sum of GTIs [s]
ontime2	20030.992915452	Sum of GTIs [s]
ontime3	20037.315975964	Sum of GTIs [s]
ontime6	20037.151805937	Sum of GTIs [s]
l2events	77367	Number of level 2 events



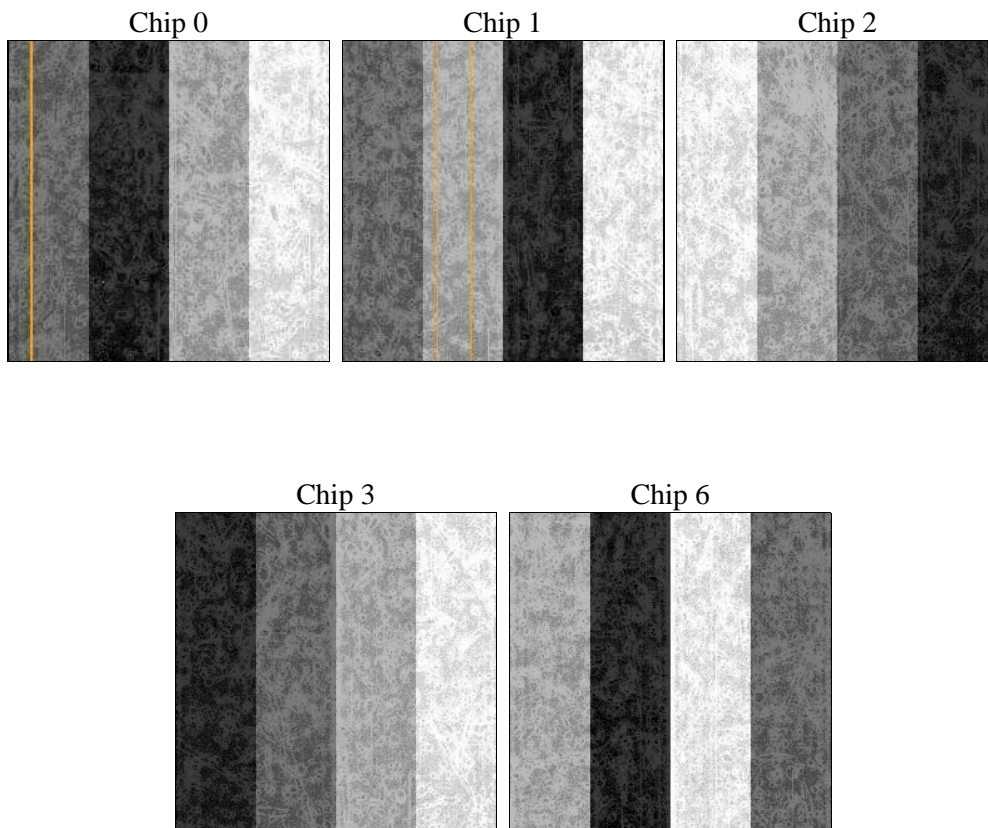
2 OBI

2.1 OBI

2.1.1 Images



2.1.2 Bias



2.1.3 Parameters

obi_num	0	Obi number	sched_exp_time	20000.000000	[s] Scheduled observation exposure time
ascdsver	8.4.5	Processing system revision	ontime	20037.315975964	Sum of GTIs [s]
caldsver	4.4.10	 	ontime0	20040.333856225	Sum of GTIs [s]
date	2012-06-15T01:19:45	Date and time of file creation	ontime1	20034.092905581	Sum of GTIs [s]
revision	2	Processing version of data	ontime2	20030.992915452	Sum of GTIs [s]
			ontime3	20037.315975964	Sum of GTIs [s]
			ontime6	20037.151805937	Sum of GTIs [s]
			l1events	882215	Number of level 1 events

2.1.4 Events

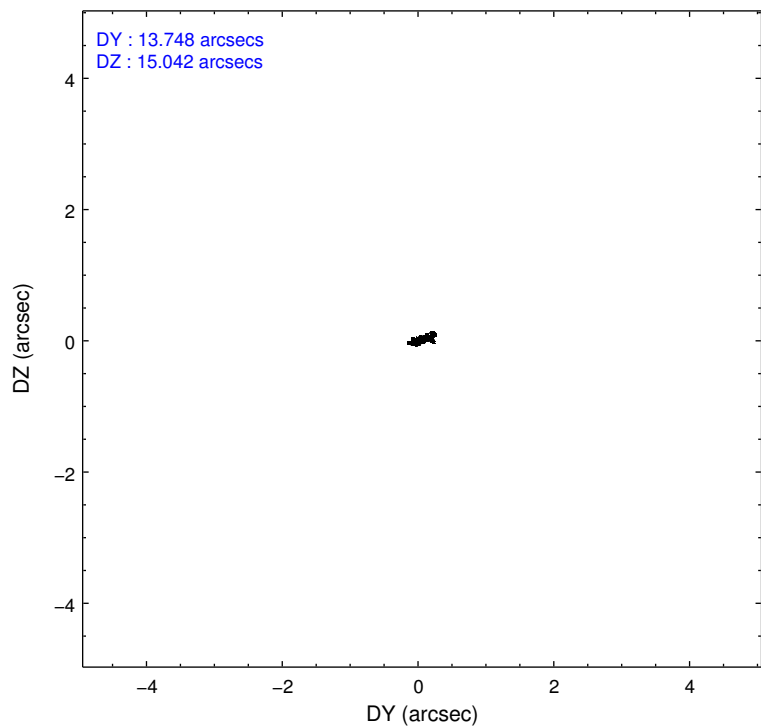
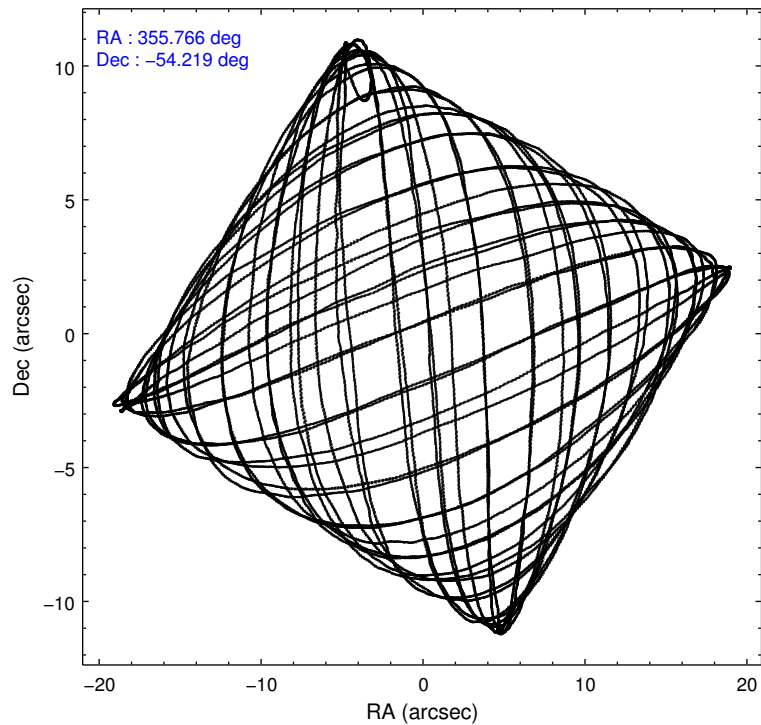
	ccd 0	ccd 1	ccd 2	ccd 3	ccd 6
level 1 events	169088	173574	184649	175787	179117
rejected events	150746	146841	167046	158172	160419
rejected %	89%	84%	90%	89%	89%

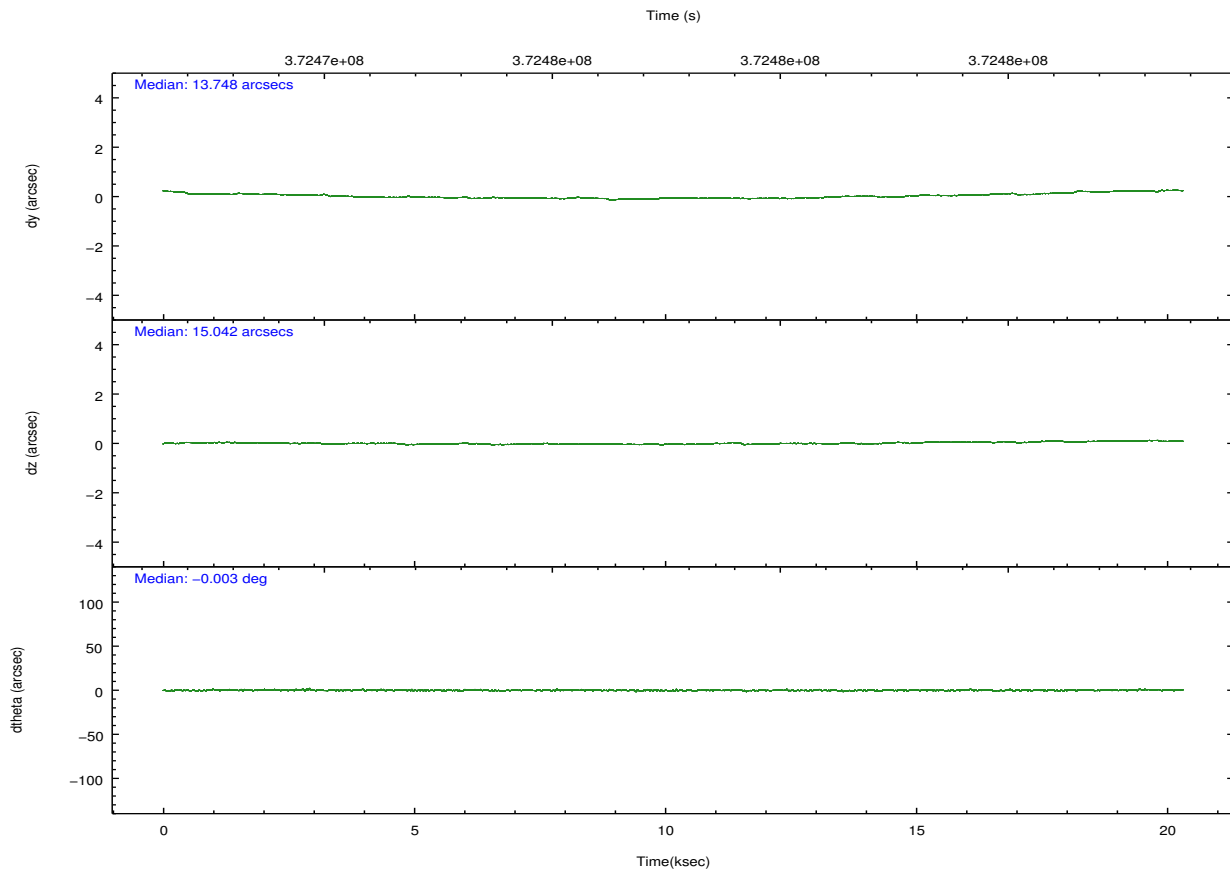
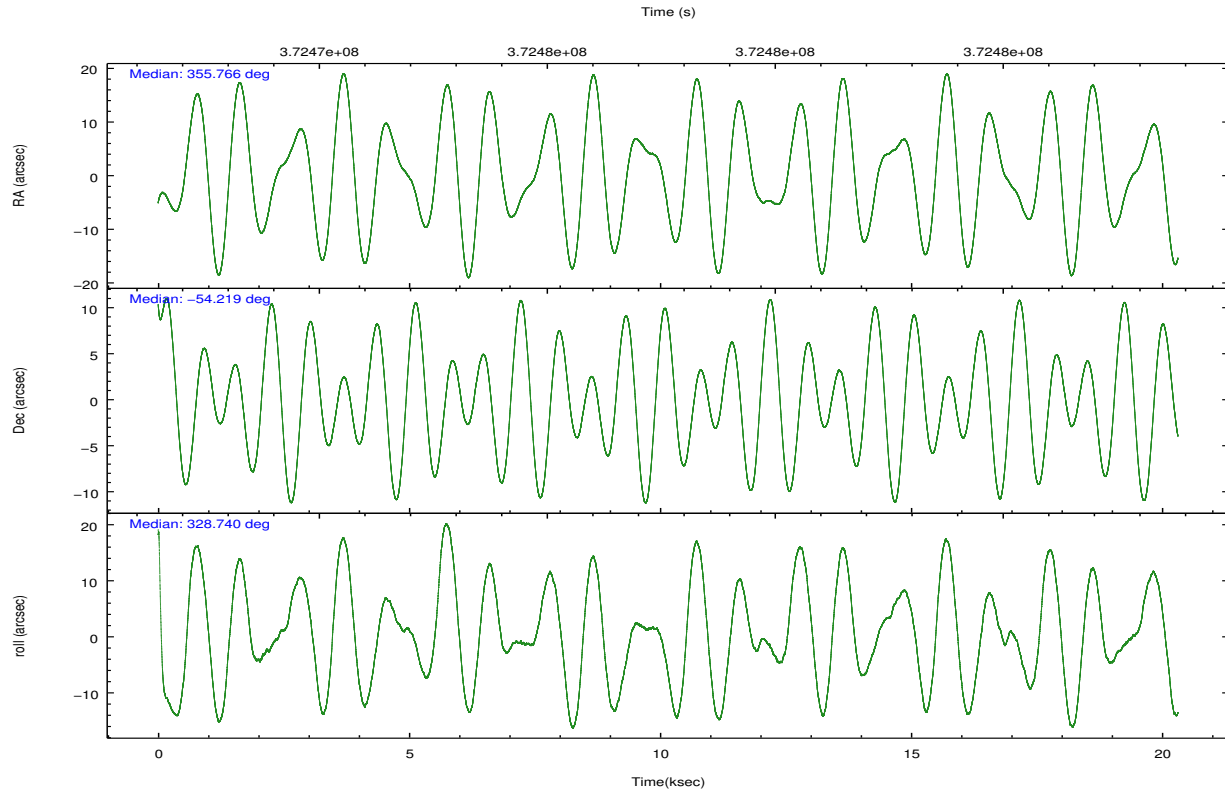
	ccd 0	ccd 1	ccd 2	ccd 3	ccd 6
grade 0 events	6319	13577	6329	6337	6483
	3%	7%	3%	3%	3%
grade 1 events	101	132	125	103	86
	0%	0%	0%	0%	0%
grade 2 events	4523	4656	4280	3889	4137
	2%	2%	2%	2%	2%
grade 3 events	1993	2125	1770	1893	2002
	1%	1%	0%	1%	1%
grade 4 events	1893	2116	1919	1939	2006
	1%	1%	1%	1%	1%
grade 5 events	6527	7140	6049	7404	7298
	3%	4%	3%	4%	4%
grade 6 events	3617	4266	3311	3563	4075
	2%	2%	1%	2%	2%
grade 7 events	144115	139562	160866	150659	153030
	85%	80%	87%	85%	85%

2.2 Compared Parameters

Parameter	Planned	Actual	Parameter	Planned	Actual
Instrument	ACIS	ACIS	Obspar format version number	7	7
Detector	ACIS-01236	ACIS-01236	Obspar file type	PREDICTED	ACTUAL
Grating	NONE	NONE	Obspar update status	NONE	UPDATED
Data mode	VFAINT	VFAINT	Number of optional ACIS chips dropped	0	0
Observation mode	POINTING	POINTING	On-chip summing requested	N	N
[deg] Pointing RA	355.718623	355.7656194411824	Subarray requested	NONE	NONE
[deg] Pointing Dec	-54.218392	-54.21884568515894	Alternating exposures requested	N	N
[deg] Pointing Roll	328.510504	328.7573424435294	[s] Primary exposure time	0.000000	3.1
[mm] SIM focus pos	-0.782348	-0.7809083437167272			
[mm] SIM defocus	0	0.001439871863259334			
[mm] SIM translation stage pos	-225.840463	-225.8433433320239			
[mm] SIM translation stage offset	-7.752	-7.749109670905796			
[s] Observation start time (MET)	372467793.184000	372466797.72271			
Observation start date	2009-10-20T23:15:27	2009-10-20T22:59:57			
[s] Observation end time (MET)	372487793.184000	372488587.6863			
Observation end date	2009-10-21T04:48:47	2009-10-21T05:03:07			
Read mode	TIMED	TIMED			

2.3 Aspect



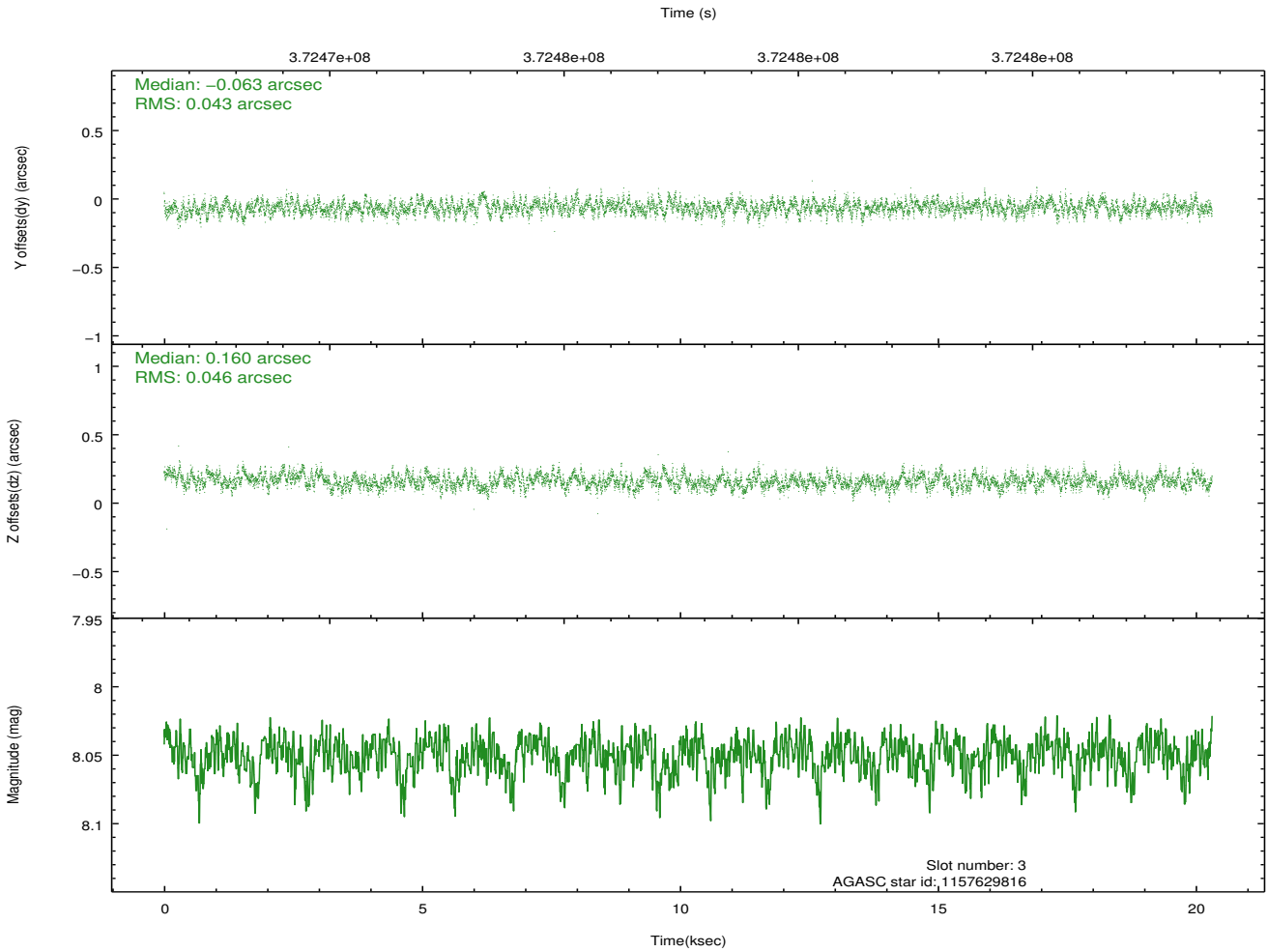
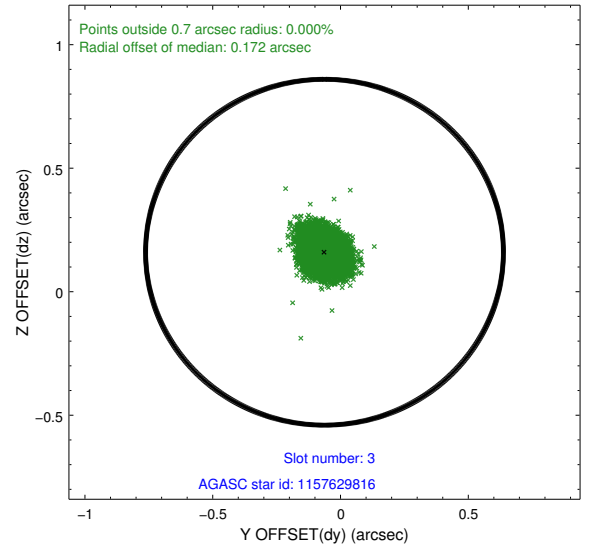
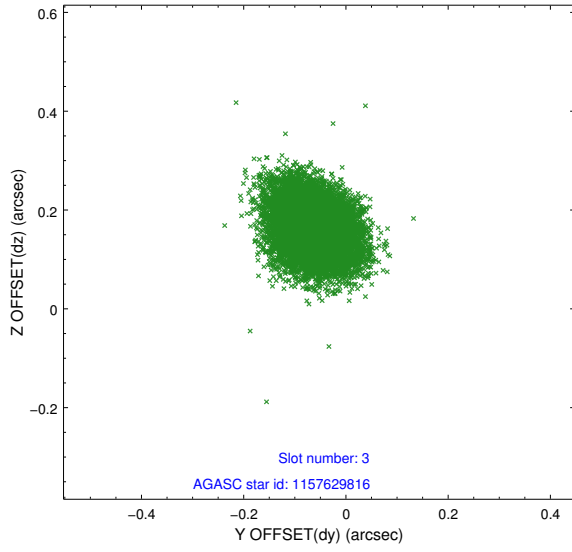


Slot Statistics

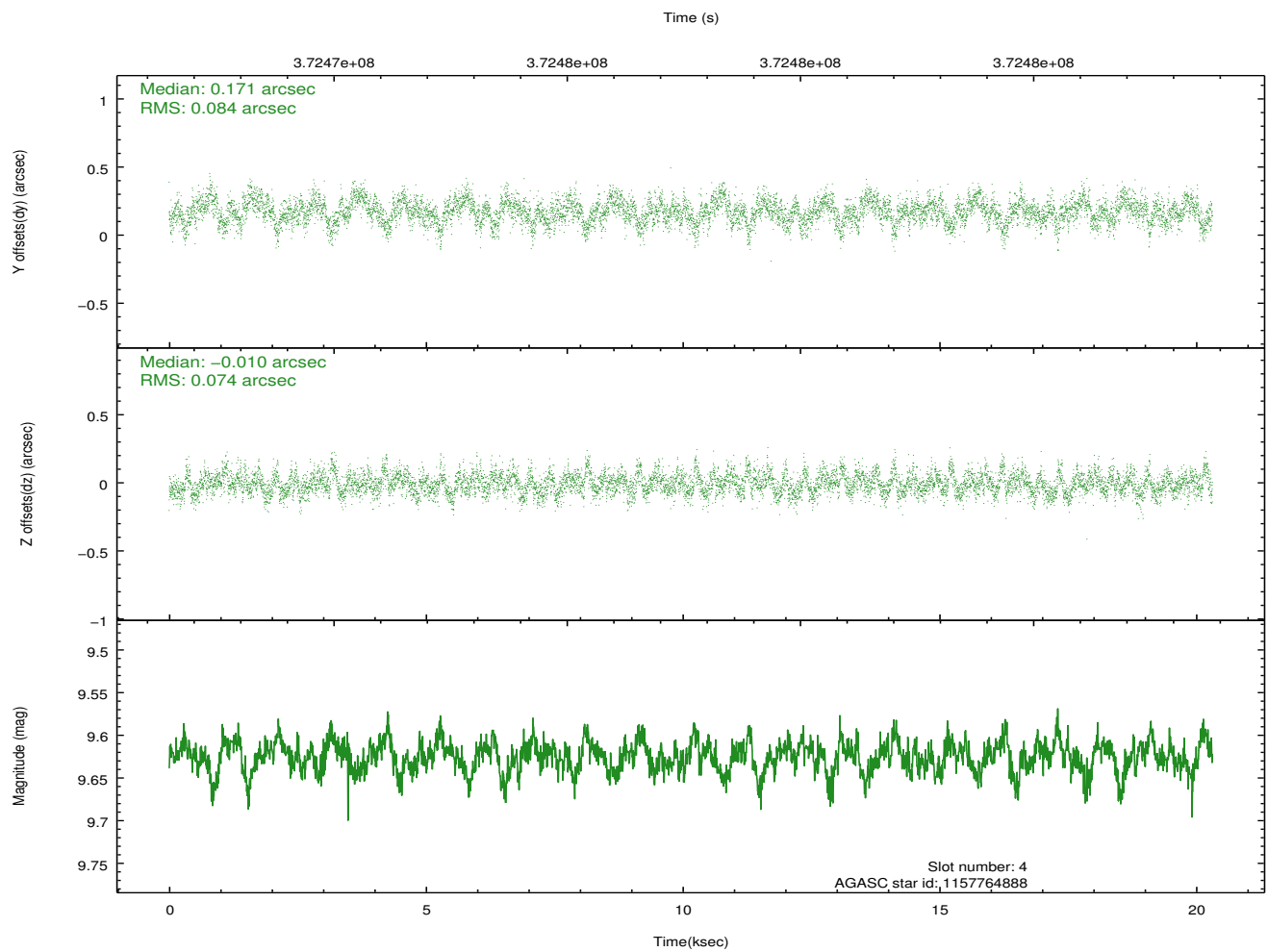
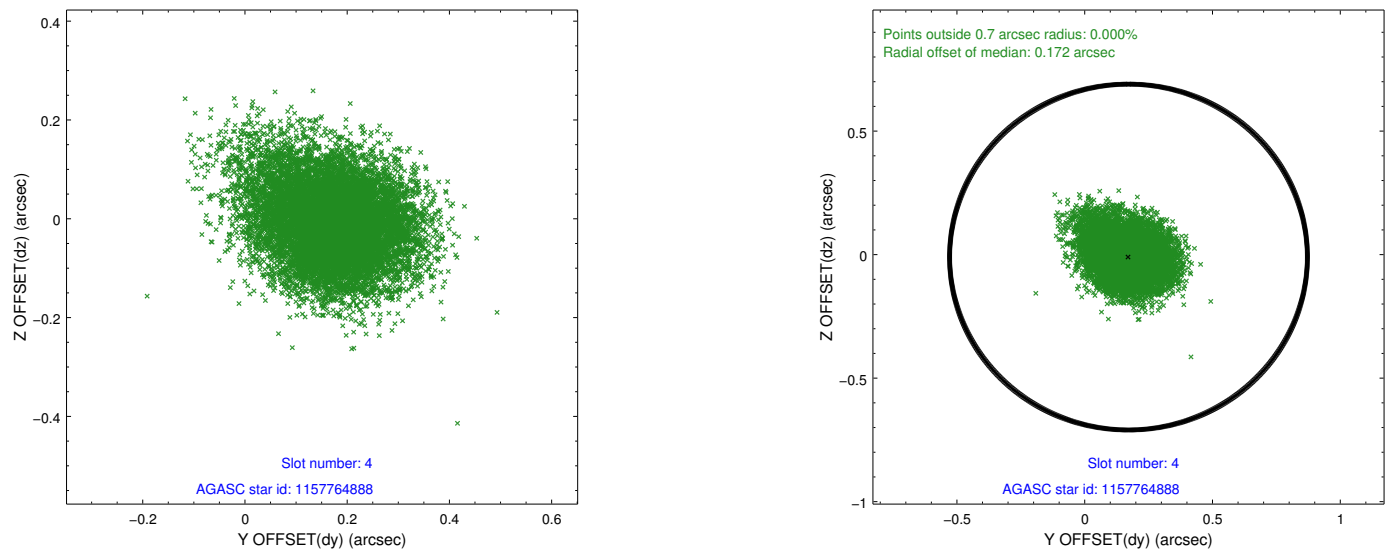
slot	status	id	mag	n_pts	med_dy	med_dz	dr1	dr2	ra	dec	mean_y	mean_z
0	FID	ACIS-I-1	7.04	4954	0.191	-0.061	0.007	0.015	0.000000	0.000000	925.79	-997.77
1	FID	ACIS-I-2	7.01	4954	-0.117	0.000	0.009	0.022	0.000000	0.000000	-768.92	-1003.28
2	FID	ACIS-I-5	7.03	4955	-0.167	0.131	0.008	0.015	0.000000	0.000000	-1822.96	899.72
3	GUIDE	1157629816	8.05	9903	-0.063	0.160	0.068	0.108	355.552749	-53.423325	-1797.33	2254.92
4	GUIDE	1157764888	9.62	9894	0.171	-0.010	0.118	0.194	355.950664	-54.829013	1560.35	-1623.39
5	GUIDE	1157765920	9.18	9901	-0.229	-0.241	0.113	0.182	356.046059	-54.690142	1469.40	-1093.95
6	GUIDE	1157767416	6.16	9910	-0.025	0.033	0.060	0.097	356.079960	-54.436056	1055.90	-274.72
7	GUIDE	1158158240	10.17	9875	0.141	0.057	0.195	0.316	355.850822	-55.046480	1791.09	-2399.70

2.4 Star Slots

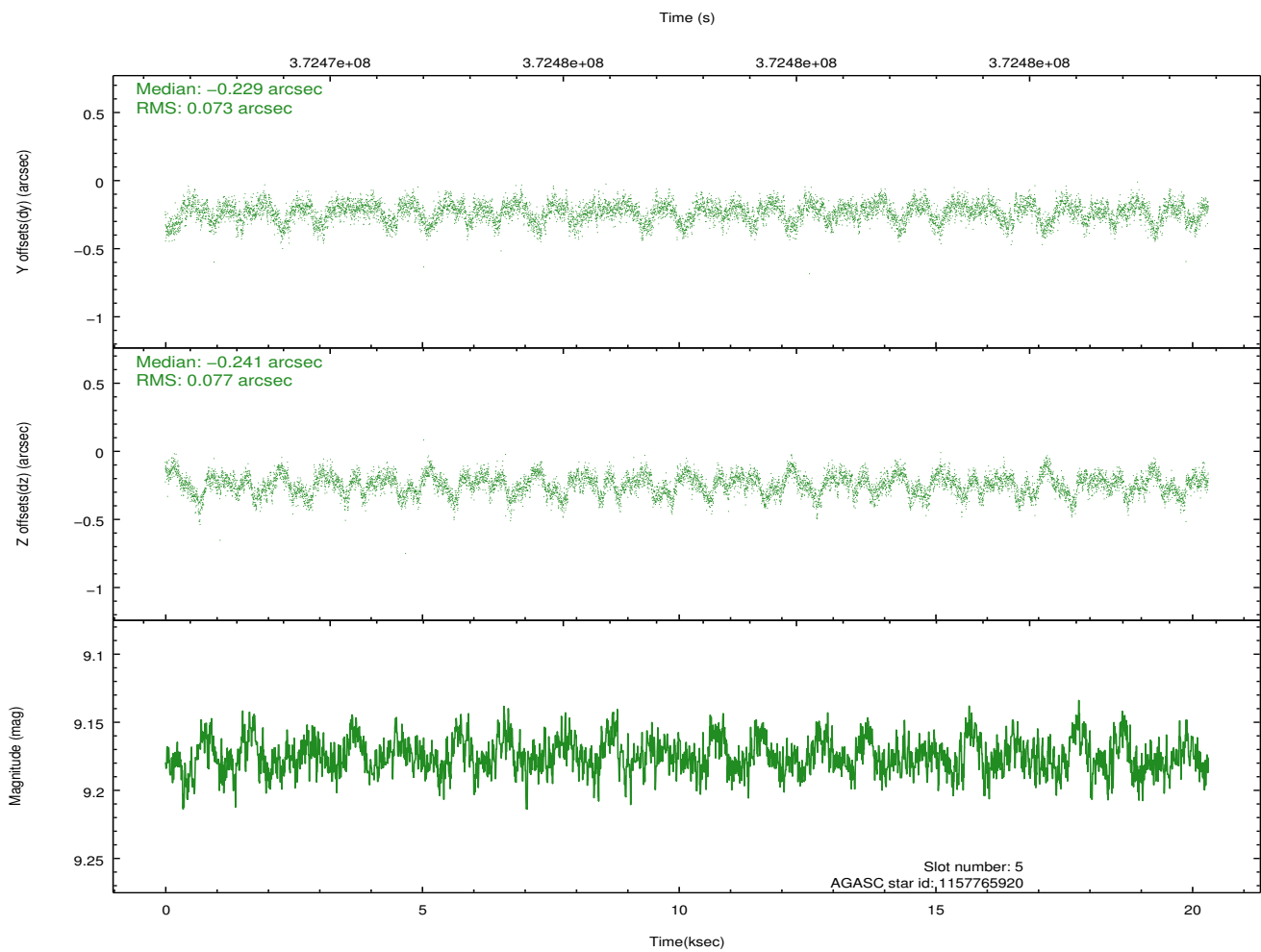
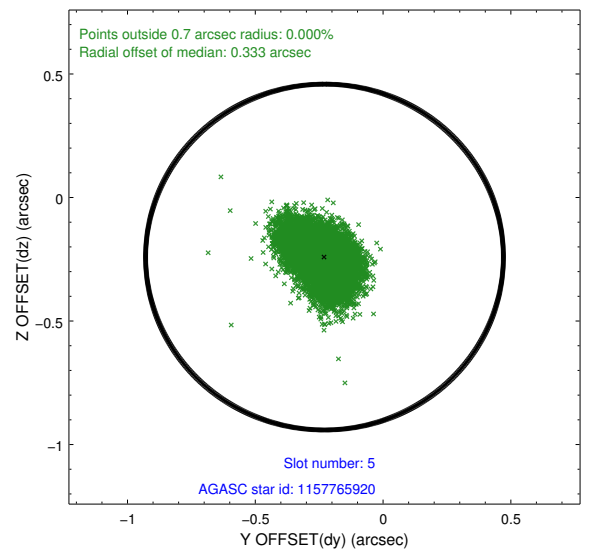
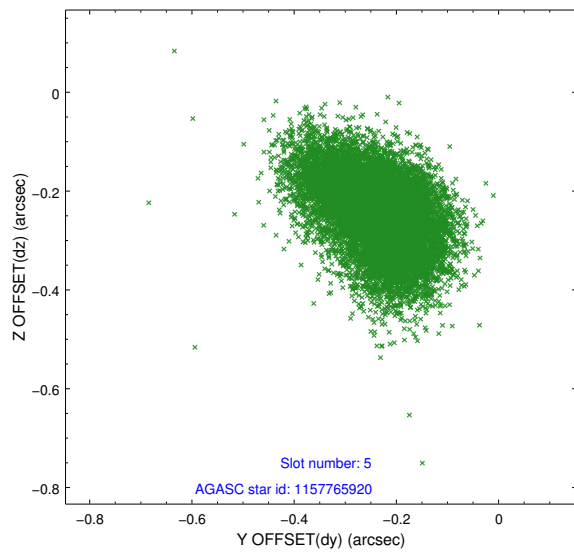
2.4.1 Slot 3



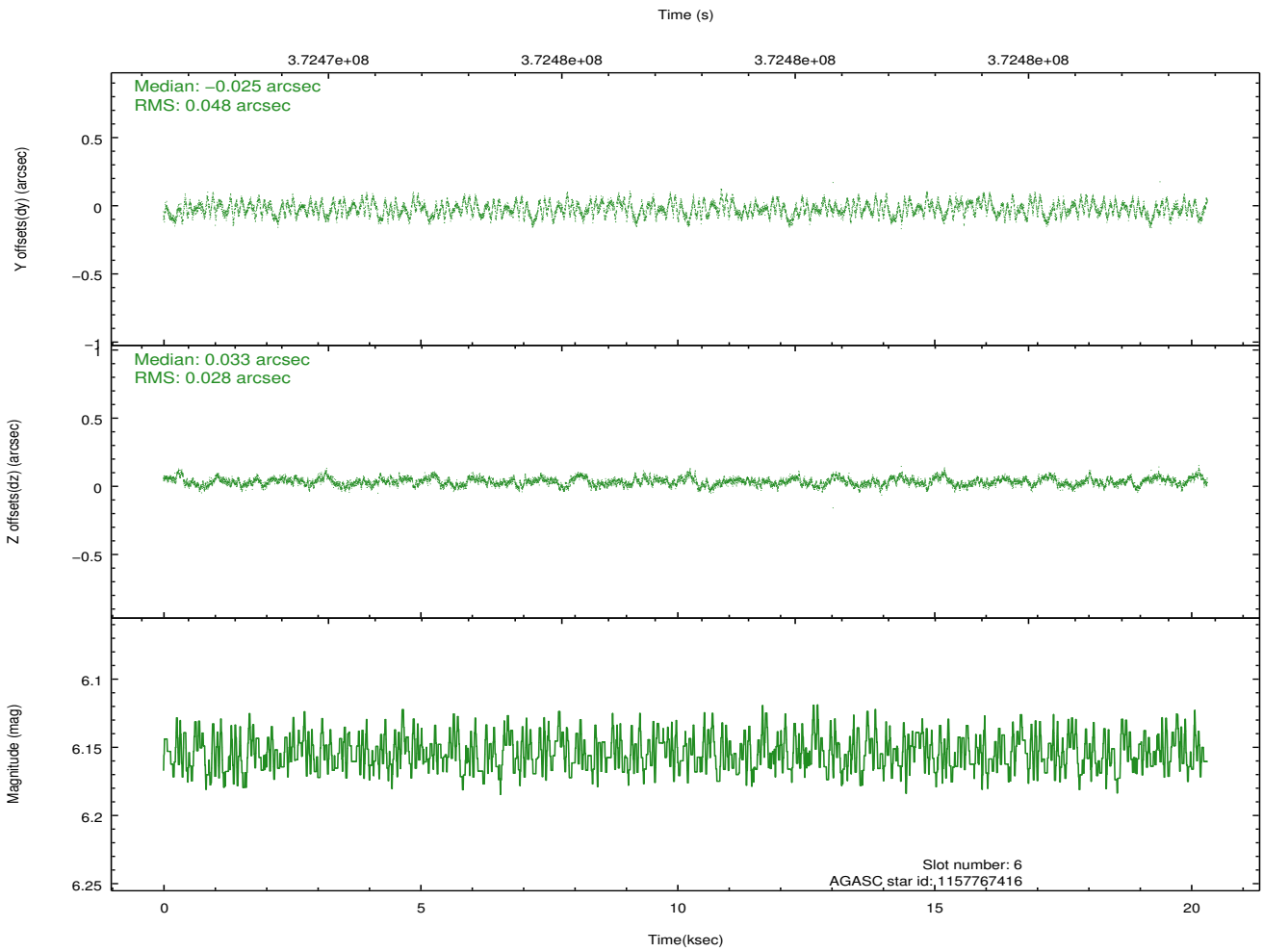
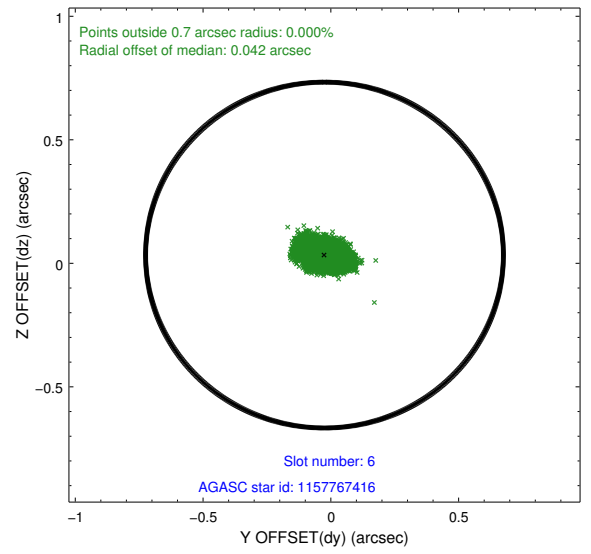
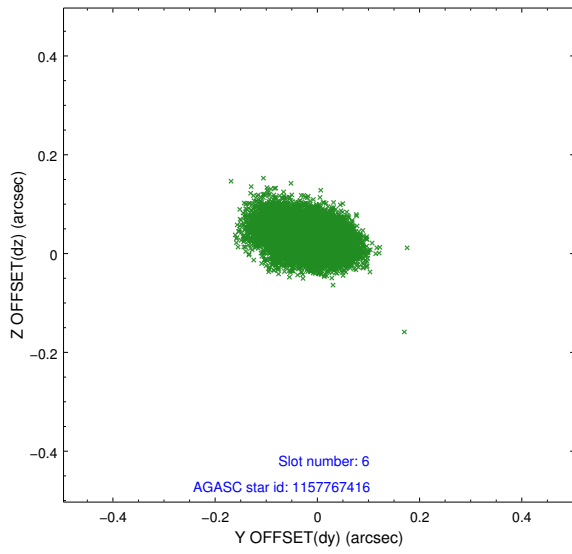
2.4.2 Slot 4



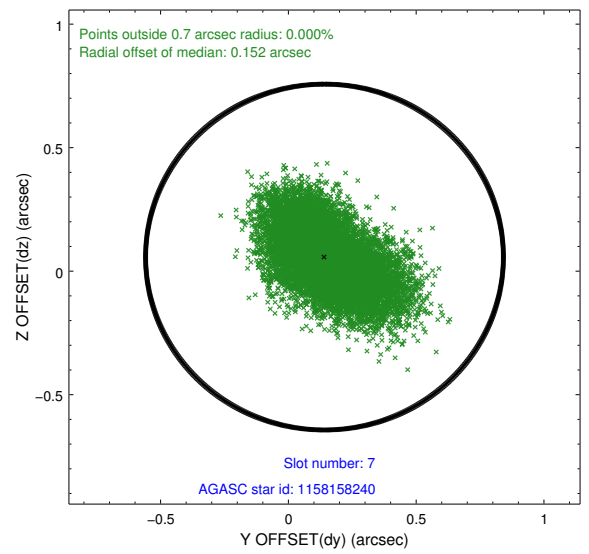
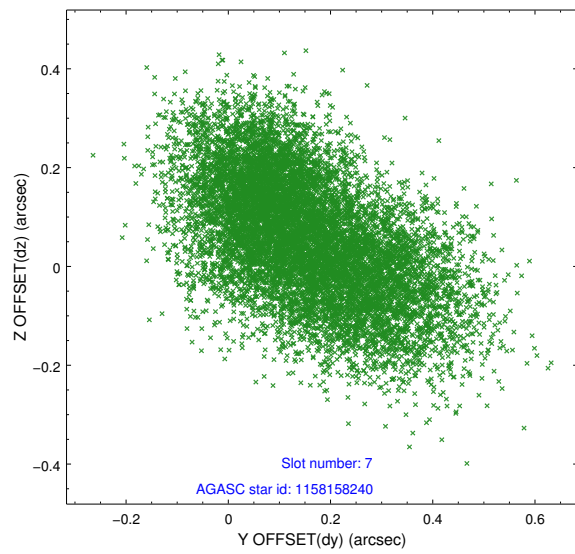
2.4.3 Slot 5



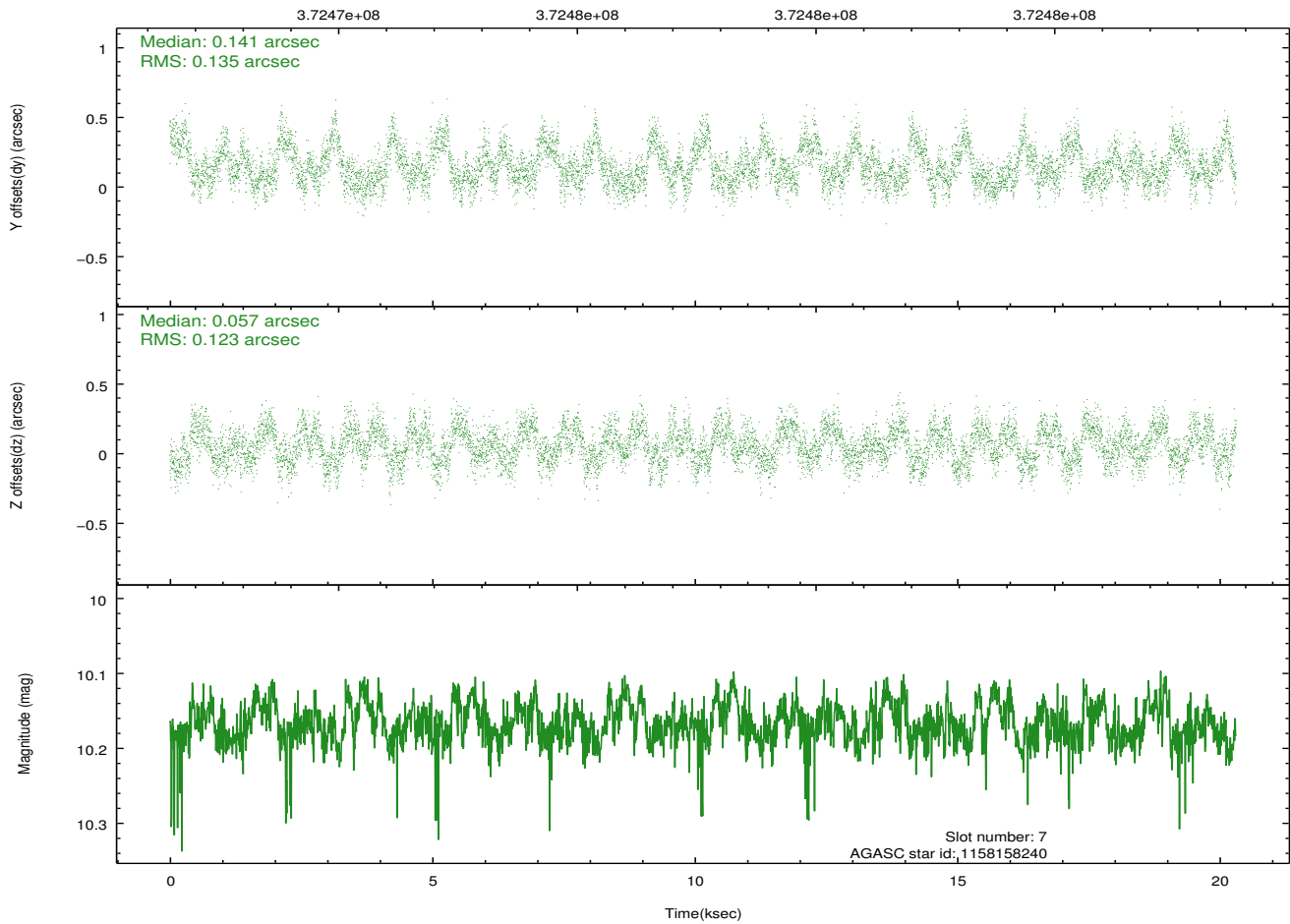
2.4.4 Slot 6



2.4.5 Slot 7

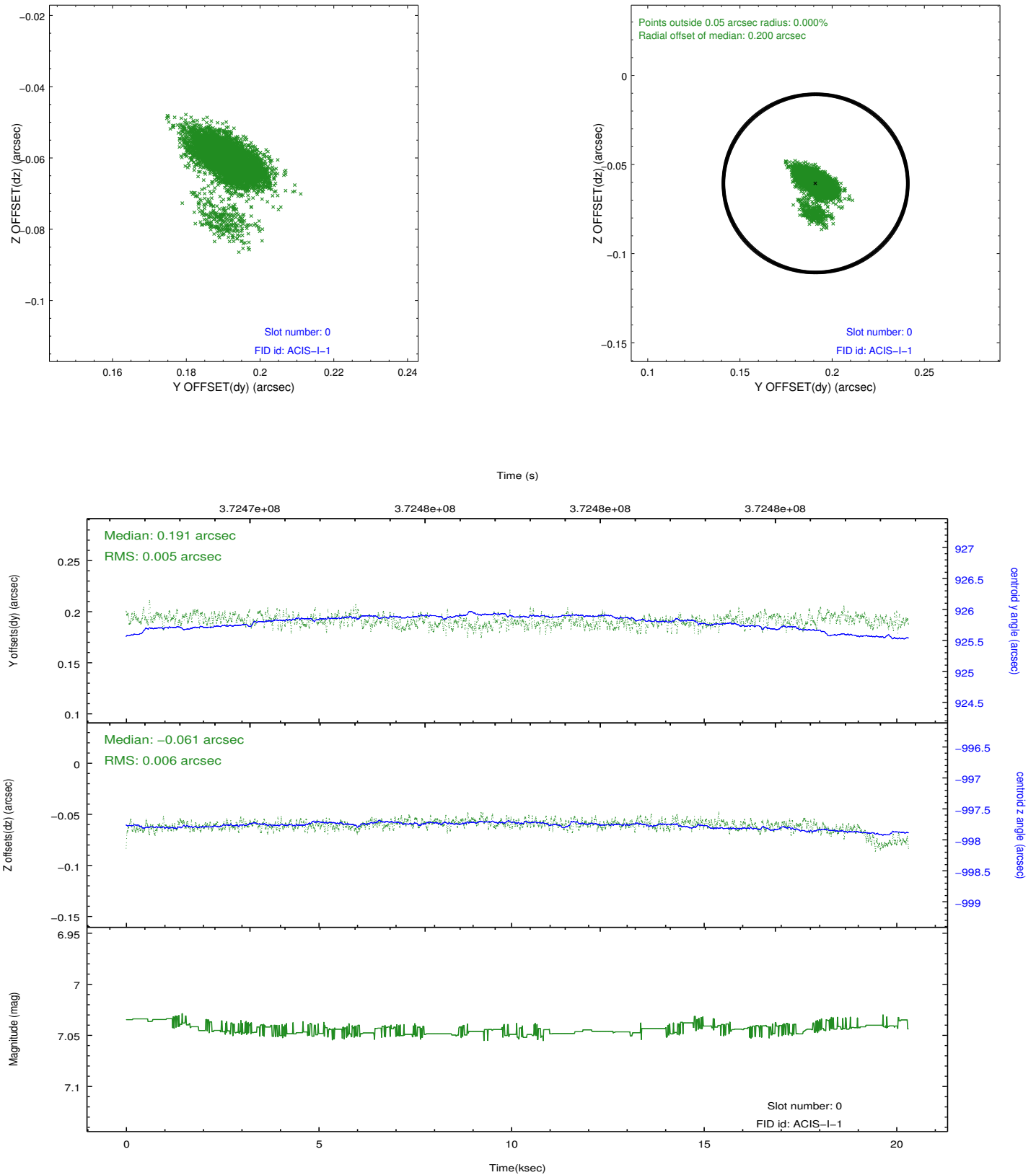


Time (s)

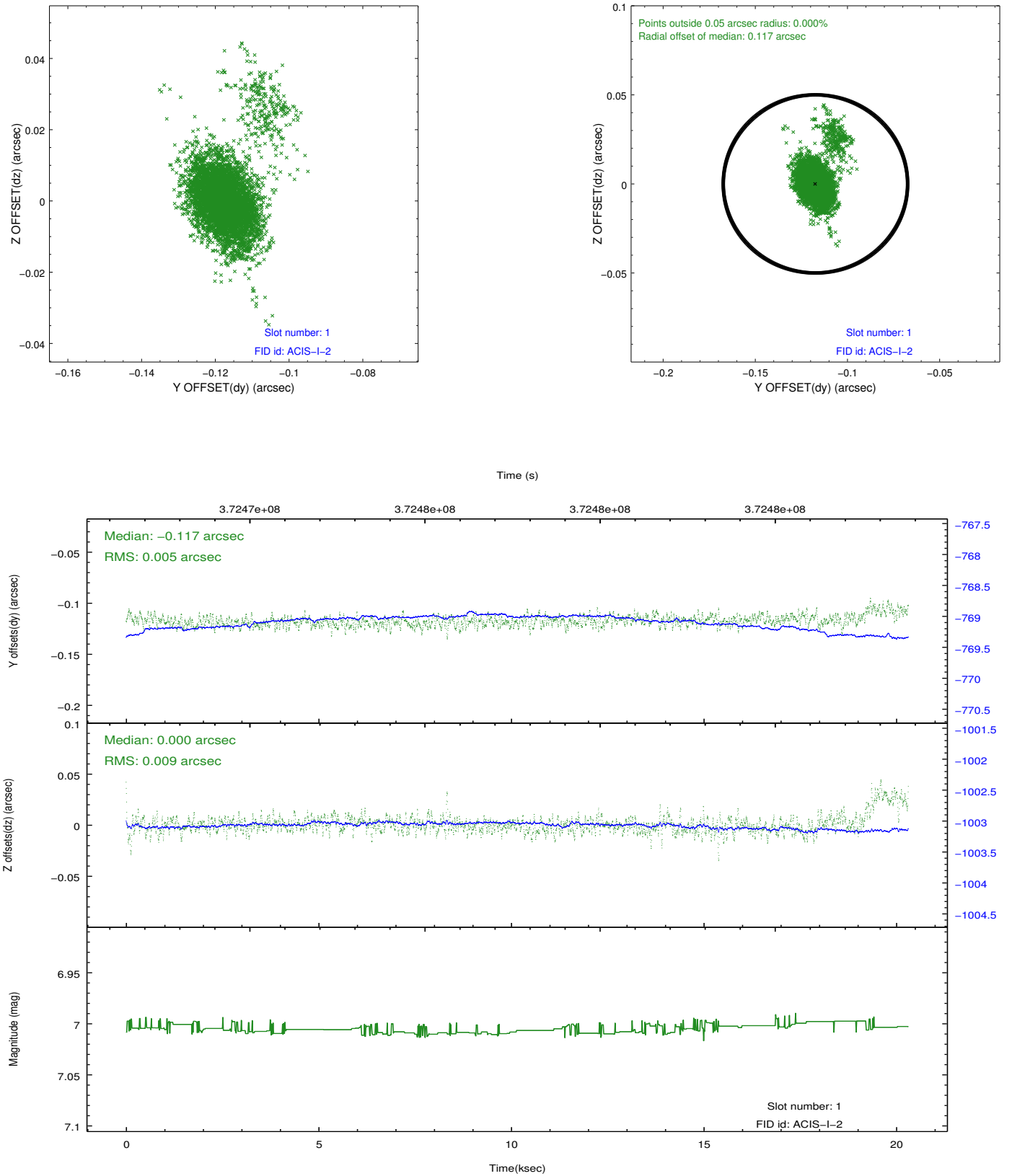


2.5 FID Slots

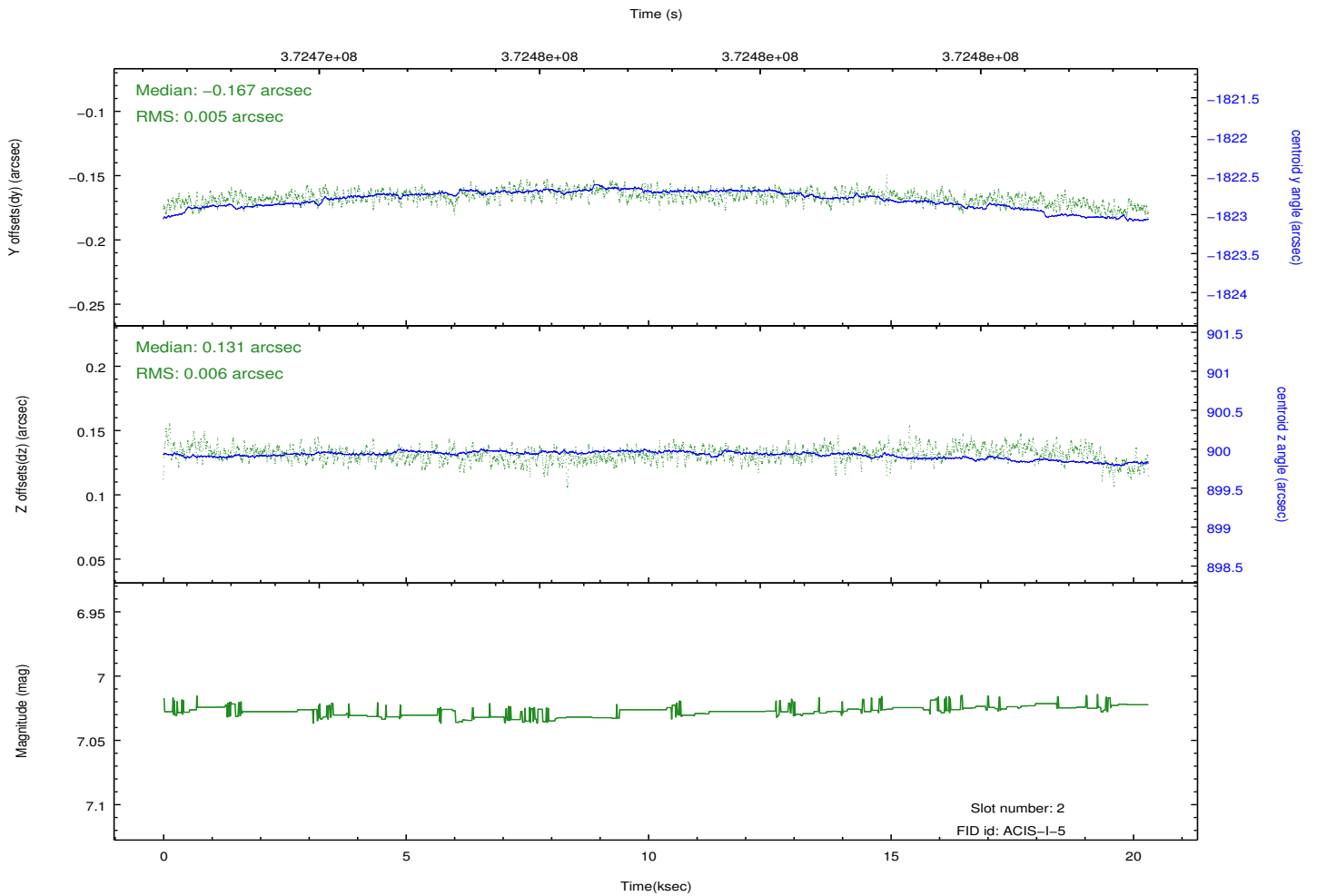
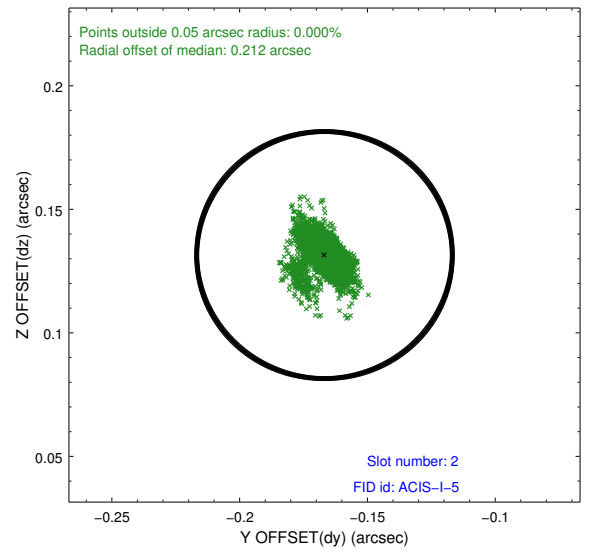
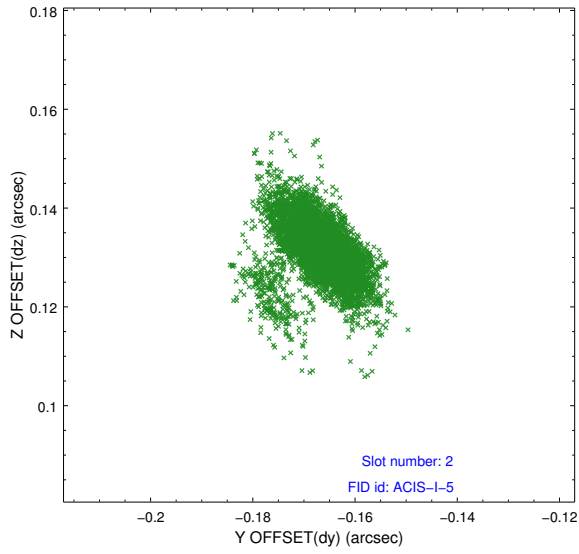
2.5.1 Slot 0



2.5.2 Slot 1



2.5.3 Slot 2



A Summary

A.1 Status

V&V Scientist	Jen Lauer
V&V Date (YYYY-MM-DD)	2012.06.19
V&V Edition	1
V&V Disposition and Status	OK
V&V Charge Time	20.037315972209

A.2 Comments