

V&V Reference Report

L2 ASCDS Version : 8.4.5

Observation 12050 - L2 Version 2
Chandra X-Ray Center

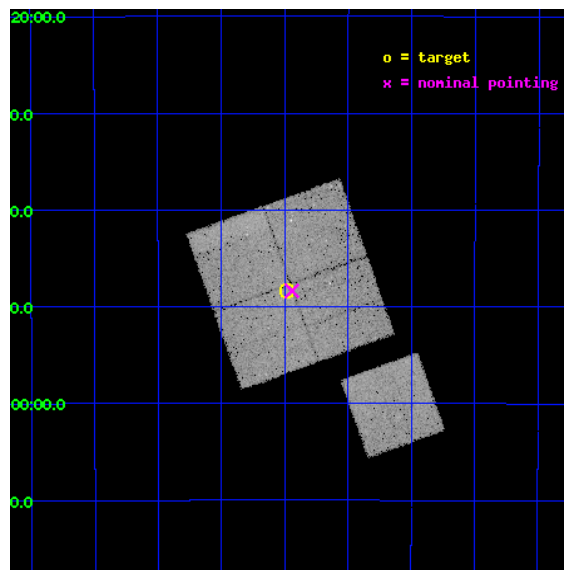
L2 Processing Date : Jun 26 2012

Contents

1	Front	2
2	OBI	3
2.1	OBI	3
2.1.1	Images	3
2.1.2	Bias	3
2.1.3	Parameters	4
2.1.4	Events	4
2.2	Compared Parameters	5
2.3	Aspect	6
2.4	Star Slots	9
2.4.1	Slot 3	9
2.4.2	Slot 4	10
2.4.3	Slot 5	11
2.4.4	Slot 6	12
2.4.5	Slot 7	13
2.5	FID Slots	14
2.5.1	Slot 0	14
2.5.2	Slot 1	15
2.5.3	Slot 2	16
A	Summary	17
A.1	Status	17
A.2	Comments	17

1 Front

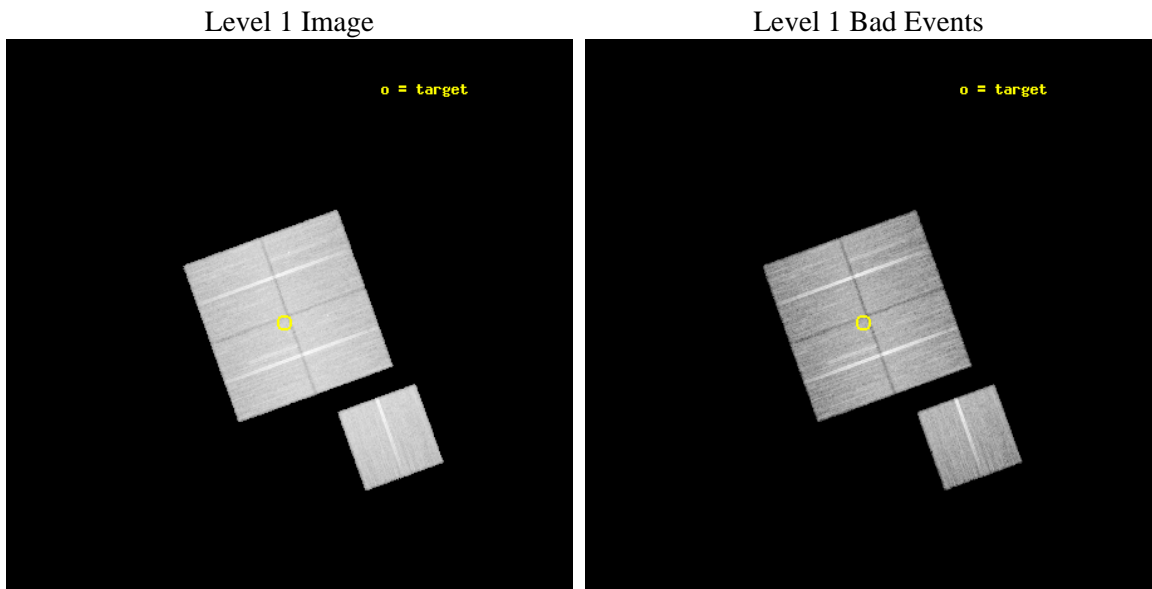
seq_num	900938	Sequence number
obs_id	12050	Observation id
title	The Chandra Deep Field-South Survey: An Ultradeep Chandra Legacy	P
observer	Dr. Harvey Tananbaum	Principal investigator
object	Chandra Deep Field-South	Source name
dtcycle	0	
cycle	P	events from which exps? Prim/Second/Both
ra_targ	53.12	Observer's specified target RA [deg]
dec_targ	-27.806389	Observer's specified target Dec [deg]
ra_nom	53.110882524785	Nominal RA [deg]
dec_nom	-27.806038242121	Nominal Dec [deg]
roll_nom	160.20442465358	Nominal Roll [deg]
revision	2	Processing version of data
ontime	30048.259260774	Sum of GTIs [s]
livetime	29655.656632325	Livetime [s]
ontime0	30048.259270787	Sum of GTIs [s]
ontime1	30048.259270787	Sum of GTIs [s]
ontime2	30048.259260833	Sum of GTIs [s]
ontime3	30048.259260774	Sum of GTIs [s]
ontime6	30045.11828047	Sum of GTIs [s]
l2events	103484	Number of level 2 events



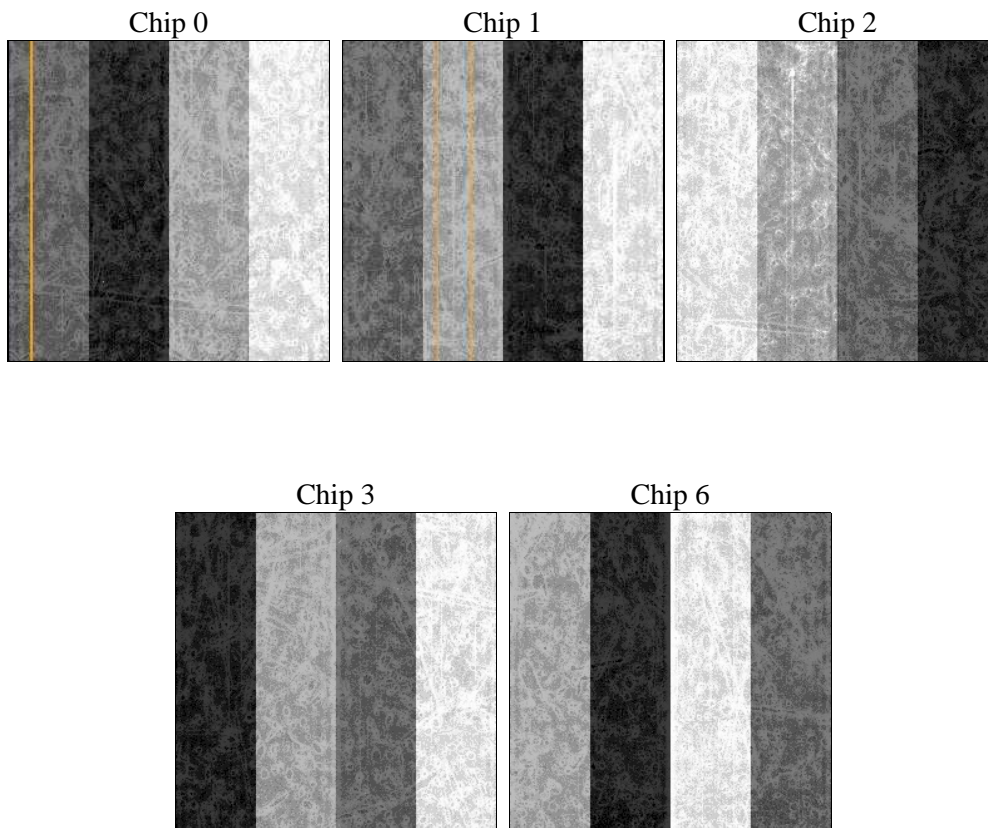
2 OBI

2.1 OBI

2.1.1 Images



2.1.2 Bias



2.1.3 Parameters

obi_num	1	Obi number	sched_exp_time	30000.000000	[s] Scheduled observation exposure time
ascdsver	8.4.5	Processing system revision	ontime	30048.259260774	Sum of GTIs [s]
caldbver	4.4.10	 	ontime0	30048.259270787	Sum of GTIs [s]
date	2012-06-26T15:39:47	Date and time of file creation	ontime1	30048.259270787	Sum of GTIs [s]
revision	2	Processing version of data	ontime2	30048.259260833	Sum of GTIs [s]
			ontime3	30048.259260774	Sum of GTIs [s]
			ontime6	30045.11828047	Sum of GTIs [s]
			l1events	1101270	Number of level 1 events

2.1.4 Events

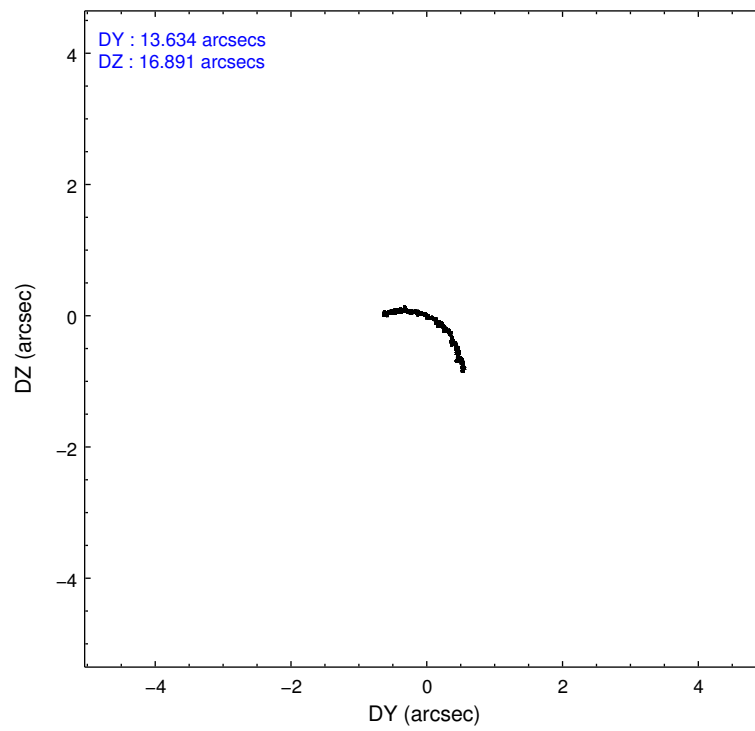
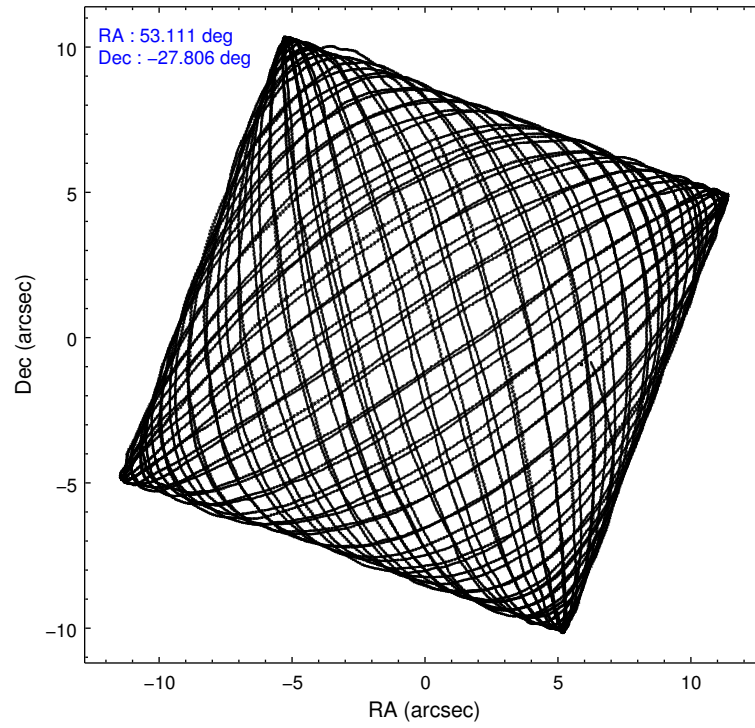
	ccd 0	ccd 1	ccd 2	ccd 3	ccd 6
level 1 events	210041	211411	232914	223881	223023
rejected events	185142	184062	208918	200997	198059
rejected %	88%	87%	89%	89%	88%

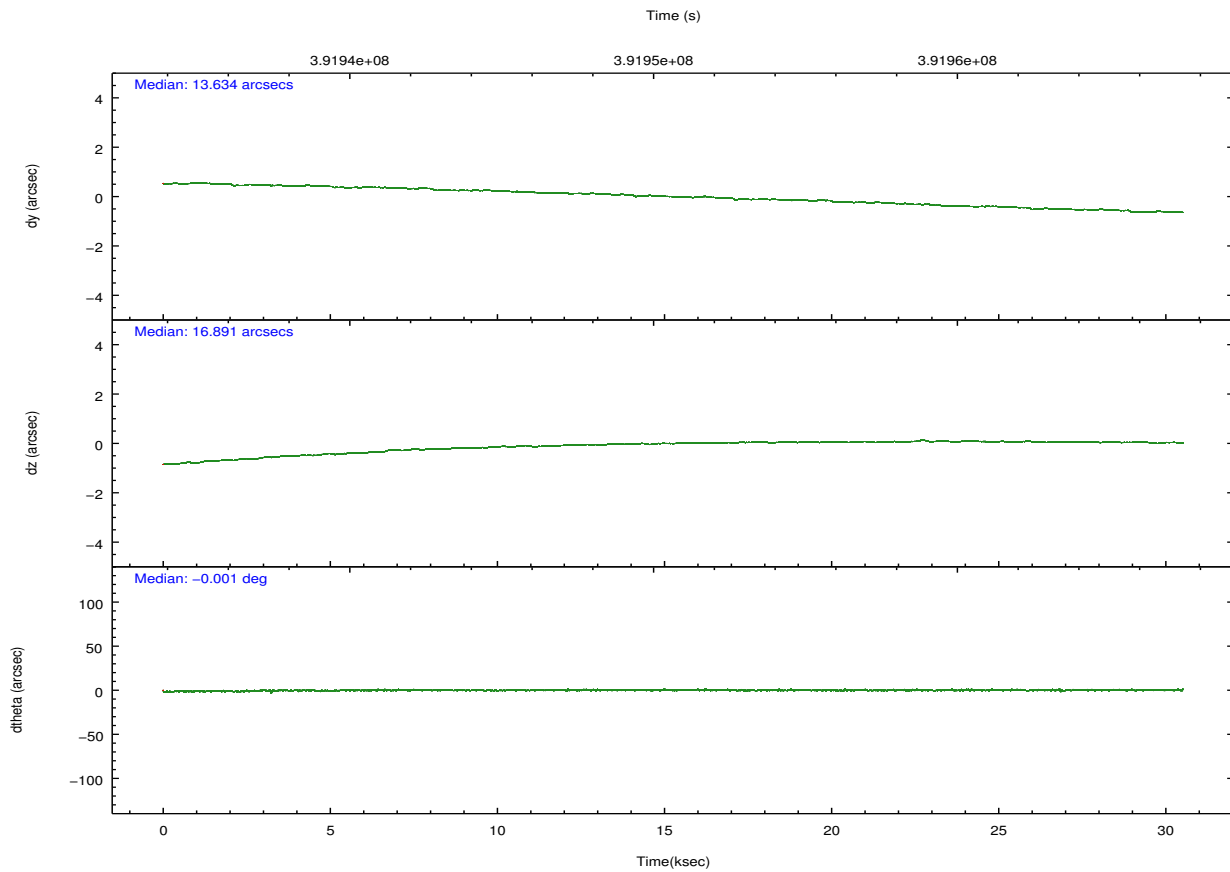
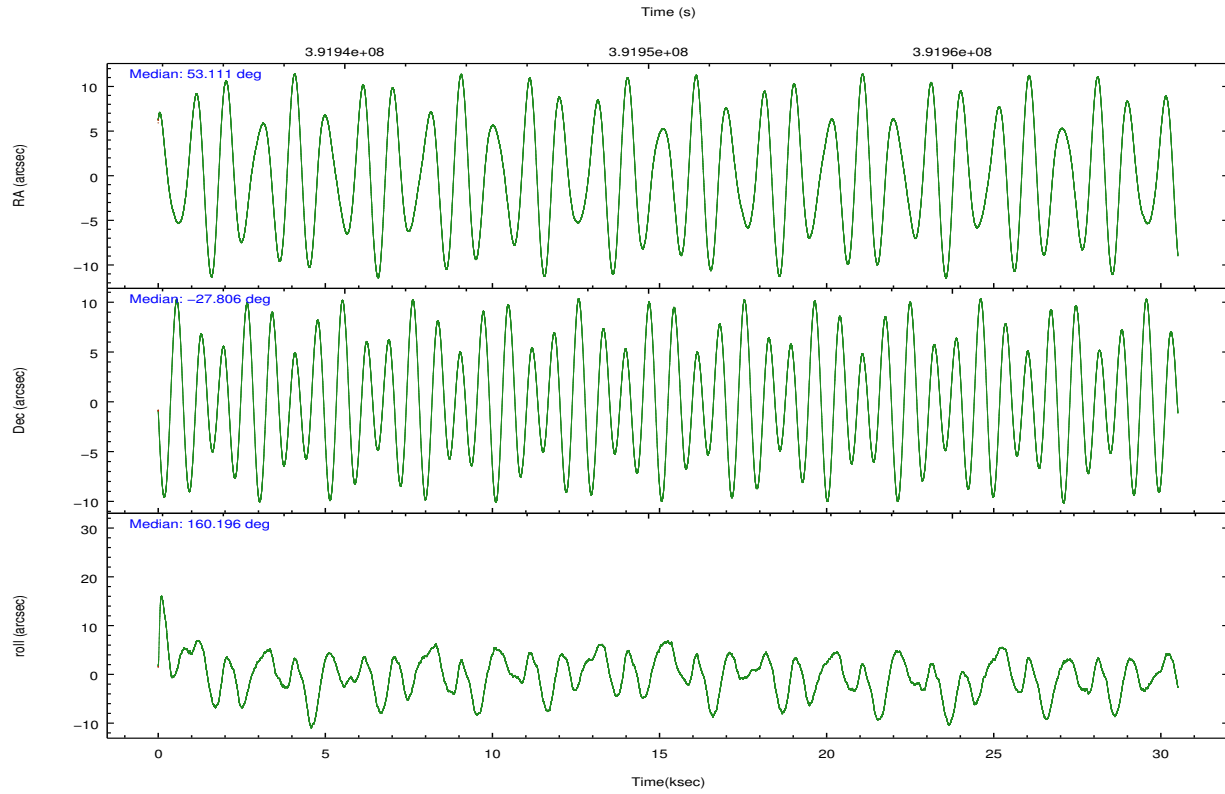
	ccd 0	ccd 1	ccd 2	ccd 3	ccd 6
grade 0 events	8715	9651	8626	7792	8623
	4%	4%	3%	3%	3%
grade 1 events	146	134	146	148	95
	0%	0%	0%	0%	0%
grade 2 events	6044	6366	5945	5339	5608
	2%	3%	2%	2%	2%
grade 3 events	2729	2806	2429	2565	2699
	1%	1%	1%	1%	1%
grade 4 events	2529	2817	2533	2381	2586
	1%	1%	1%	1%	1%
grade 5 events	8939	9589	8598	10109	9705
	4%	4%	3%	4%	4%
grade 6 events	4884	5709	4467	4809	5453
	2%	2%	1%	2%	2%
grade 7 events	176055	174339	200170	190738	188254
	83%	82%	85%	85%	84%

2.2 Compared Parameters

Parameter	Planned	Actual	Parameter	Planned	Actual
Instrument	ACIS	ACIS	Obspar format version number	7	7
Detector	ACIS-01236	ACIS-01236	Obspar file type	PREDICTED	ACTUAL
Grating	NONE	NONE	Obspar update status	NONE	UPDATED
Data mode	VFAINT	VFAINT	CCD I0 on	Y	Y
Observation mode	POINTING	POINTING	CCD I1 on	Y	Y
[deg] Pointing RA	53.141450	53.11088252478521	CCD I2 on	Y	Y
[deg] Pointing Dec	-27.801055	-27.80603824212054	CCD I3 on	Y	Y
[deg] Pointing Roll	160.010008	160.2044246535811	CCD S0 on	N	N
[mm] SIM focus pos	-0.782348	-0.7809083437167272	CCD S1 on	N	N
[mm] SIM defocus	0	0.001439871863259334	CCD S2 on	O1	Y
[mm] SIM translation stage pos	-233.592463	-233.5874344608287	CCD S3 on	N	N
[mm] SIM translation stage offset	0	-0.005018542100998502	CCD S4 on	N	N
[s] Observation start time (MET)	391935903.184000	391934811.28392	CCD S5 on	N	N
Observation start date	2010-06-03T07:03:57	2010-06-03T06:46:51	Number of optional ACIS chips dropped	0	0
[s] Observation end time (MET)	391965903.184000	391966374.11053	On-chip summing requested	N	N
Observation end date	2010-06-03T15:23:57	2010-06-03T15:32:54	Subarray requested	NONE	NONE
Read mode	TIMED	TIMED	Alternating exposures requested	N	N
			[s] Primary exposure time	0.000000	3.1

2.3 Aspect



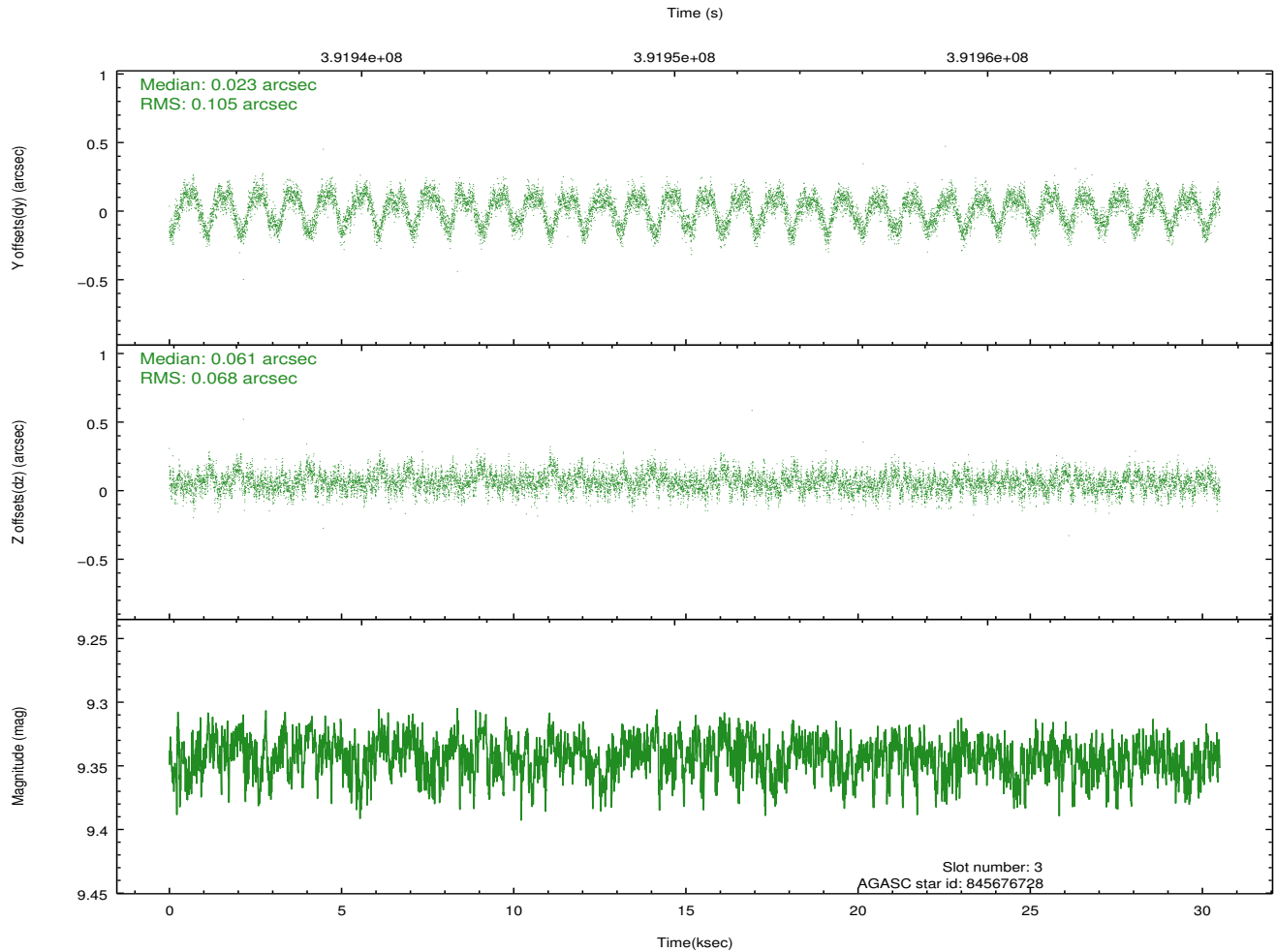
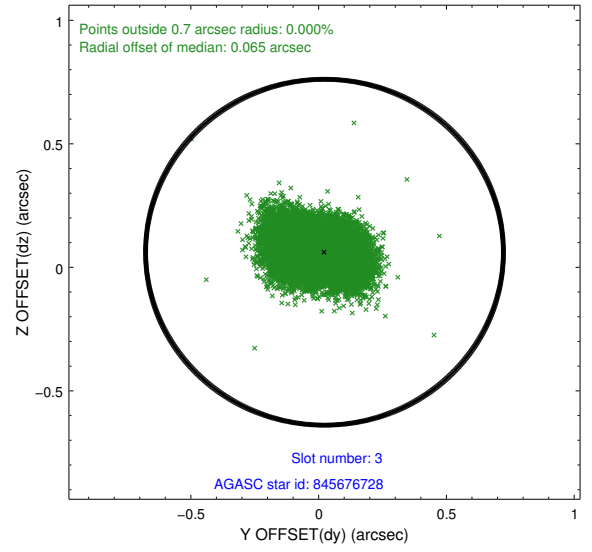
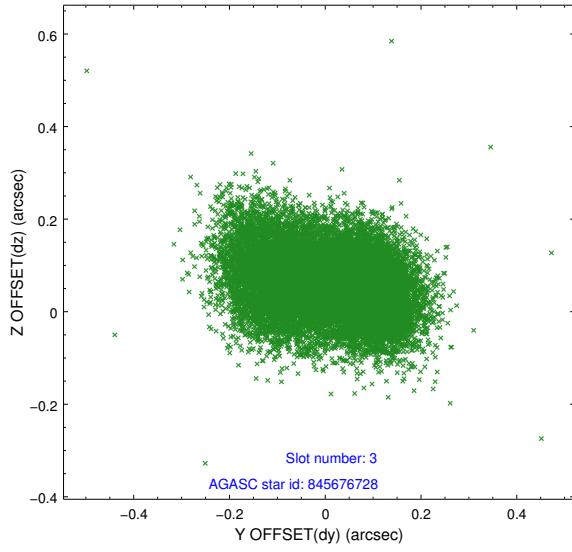


Slot Statistics

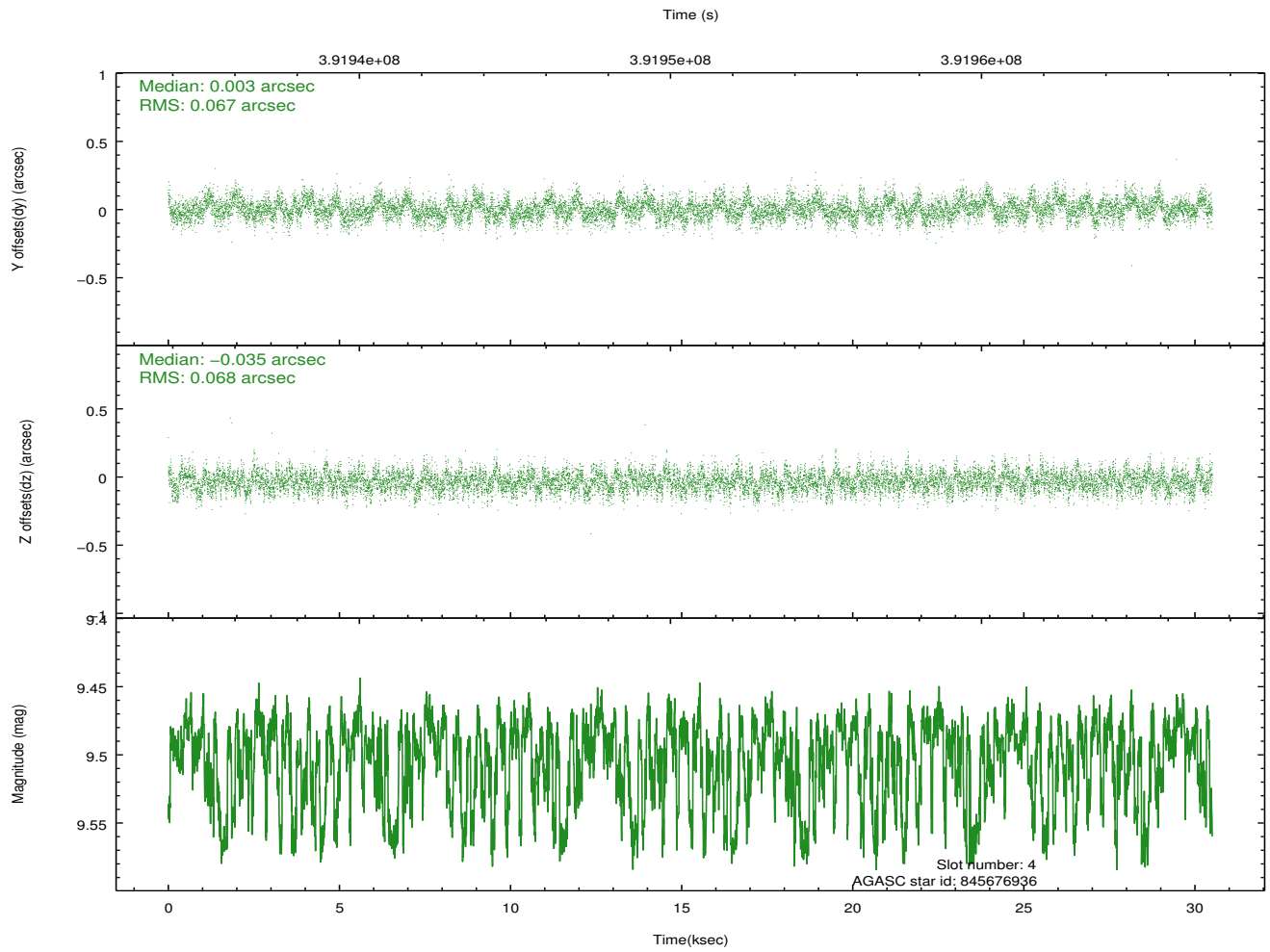
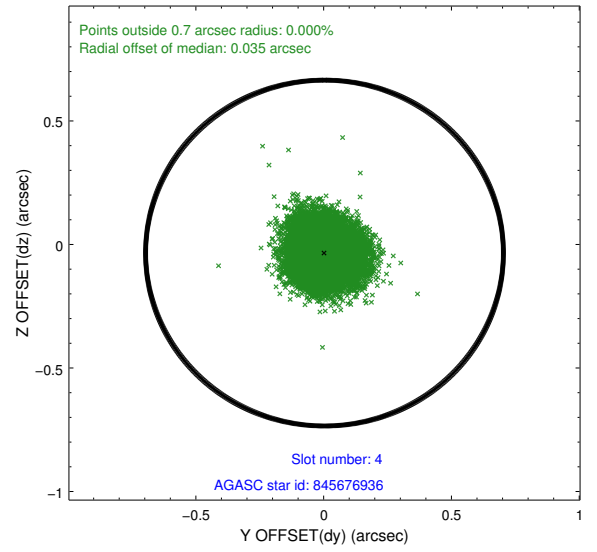
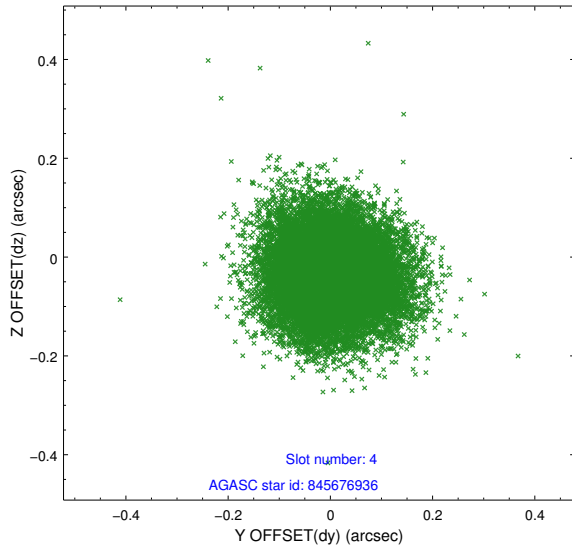
slot	status	id	mag	n_pts	med_dy	med_dz	dr1	dr2	ra	dec	mean_y	mean_z
0	FID	ACIS-I-1	7.01	7442	0.076	-0.048	0.009	0.017	0.000000	0.000000	925.94	-840.46
1	FID	ACIS-I-5	7.00	7443	-0.222	0.074	0.013	0.020	0.000000	0.000000	-1822.40	1057.15
2	FID	ACIS-I-6	7.00	7443	0.055	0.043	0.014	0.024	0.000000	0.000000	391.42	1701.67
3	GUIDE	845676728	9.34	14871	0.023	0.061	0.134	0.216	52.877179	-27.664318	960.05	-173.14
4	GUIDE	845676936	9.50	14846	0.003	-0.035	0.102	0.164	52.843773	-27.880153	792.30	592.65
5	GUIDE	845807880	8.81	14872	0.099	-0.177	0.096	0.182	53.382027	-27.886093	-823.95	26.80
6	GUIDE	845816224	10.22	14860	-0.084	-0.148	0.171	0.308	53.578992	-28.631005	-2321.94	2337.46
7	GUIDE	845417688	9.96	14828	-0.033	0.298	0.162	0.264	54.025245	-27.354040	-2108.70	-2468.43

2.4 Star Slots

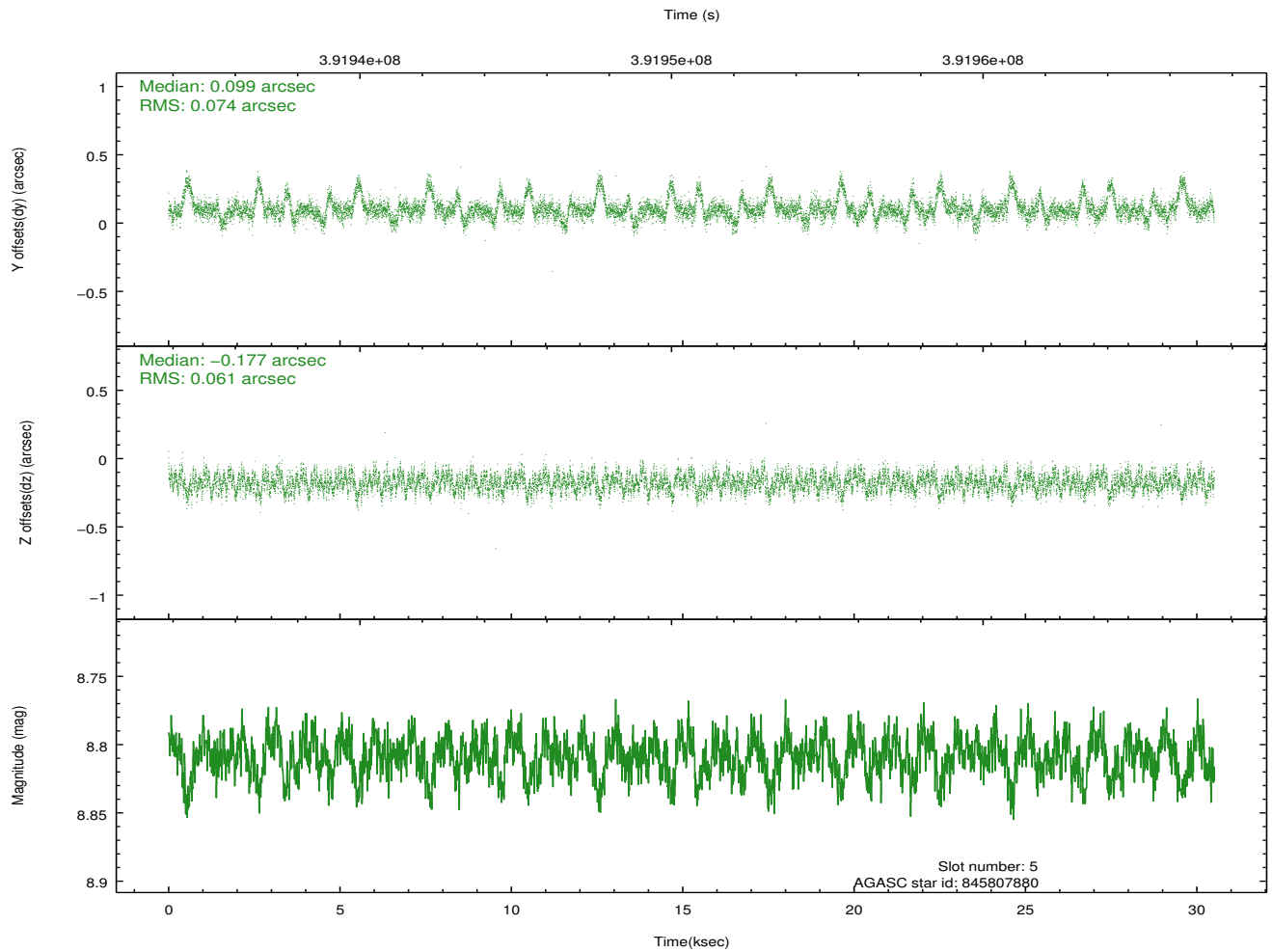
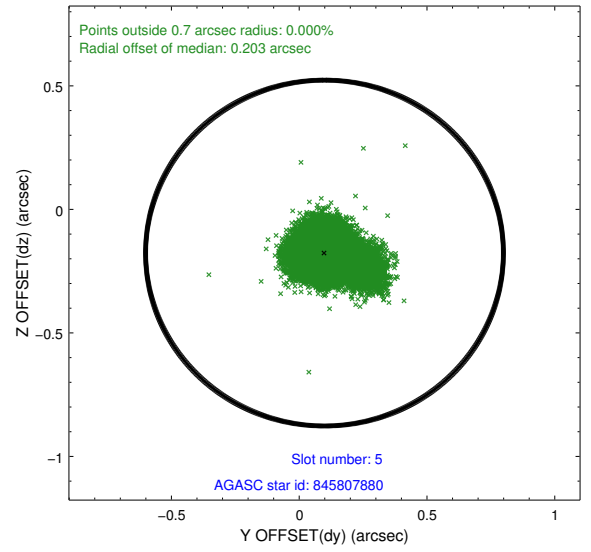
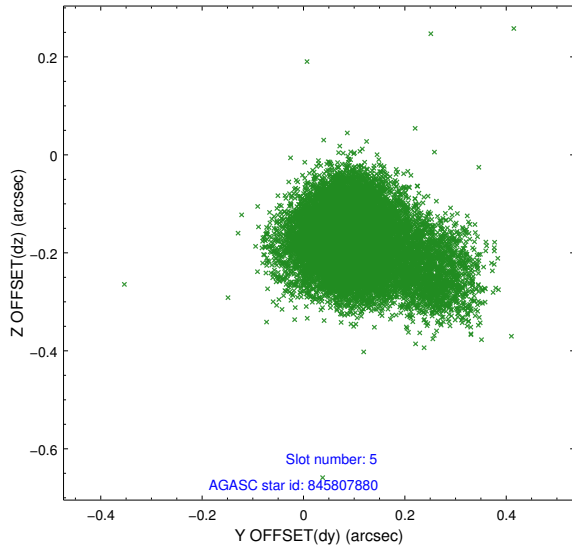
2.4.1 Slot 3



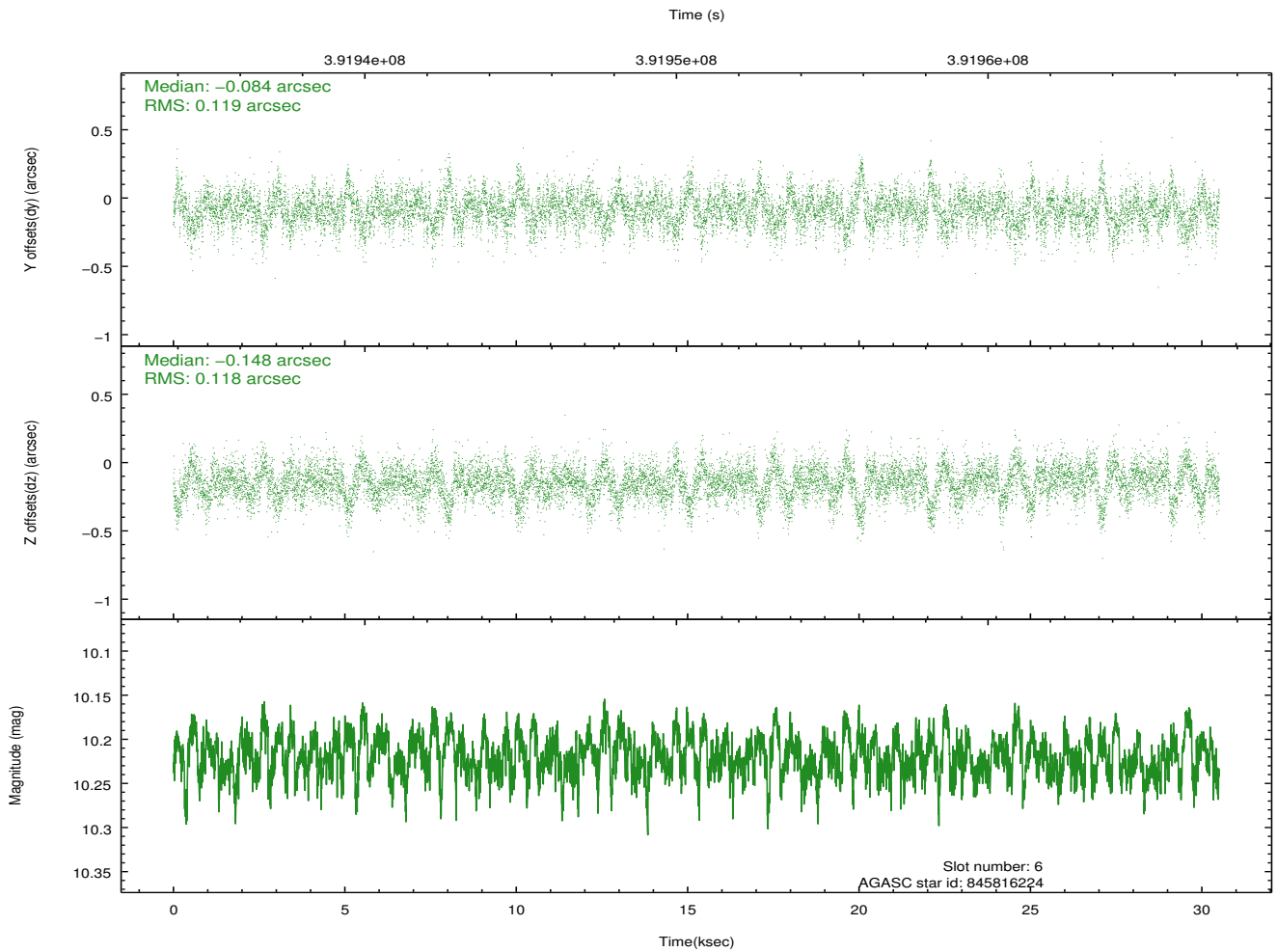
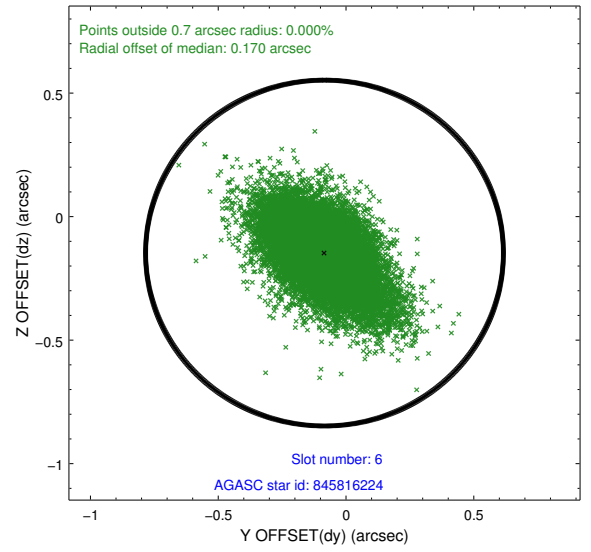
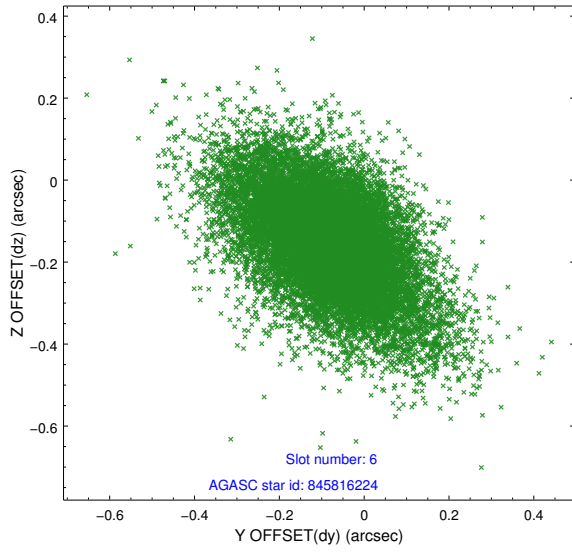
2.4.2 Slot 4



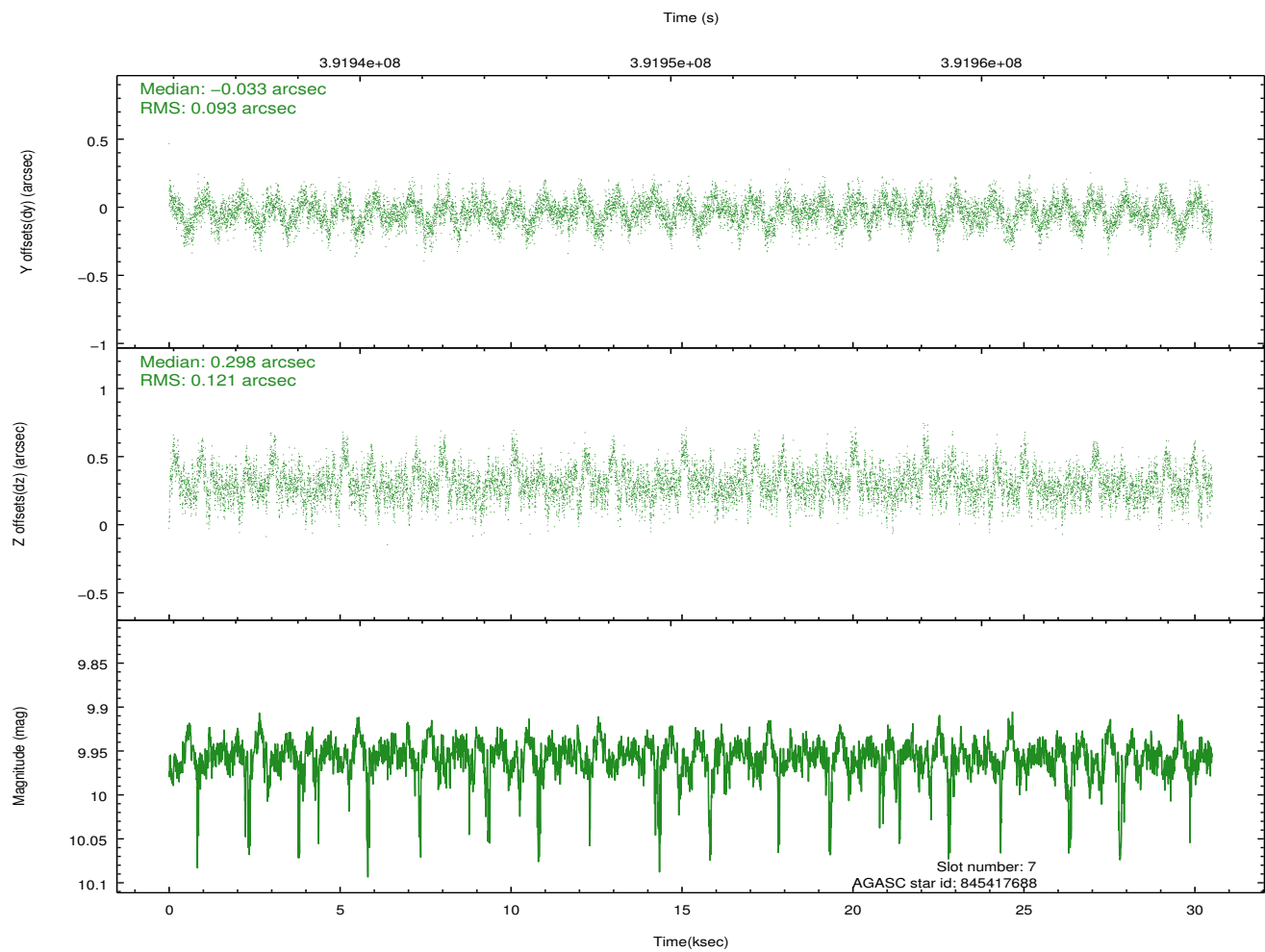
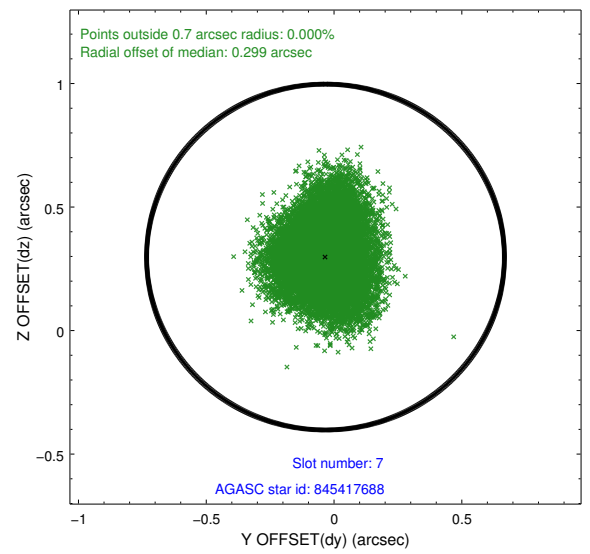
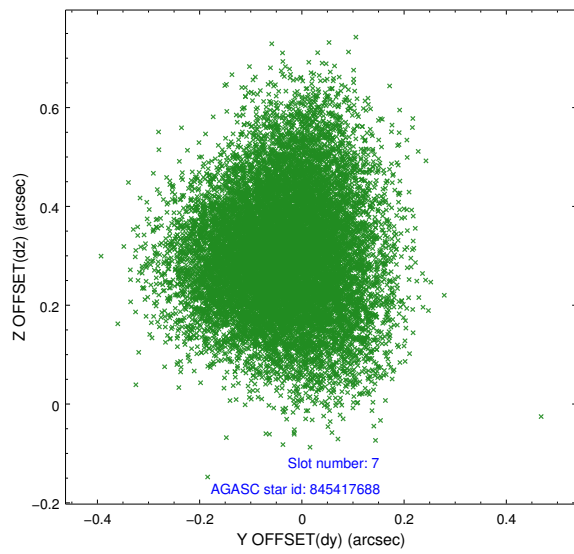
2.4.3 Slot 5



2.4.4 Slot 6

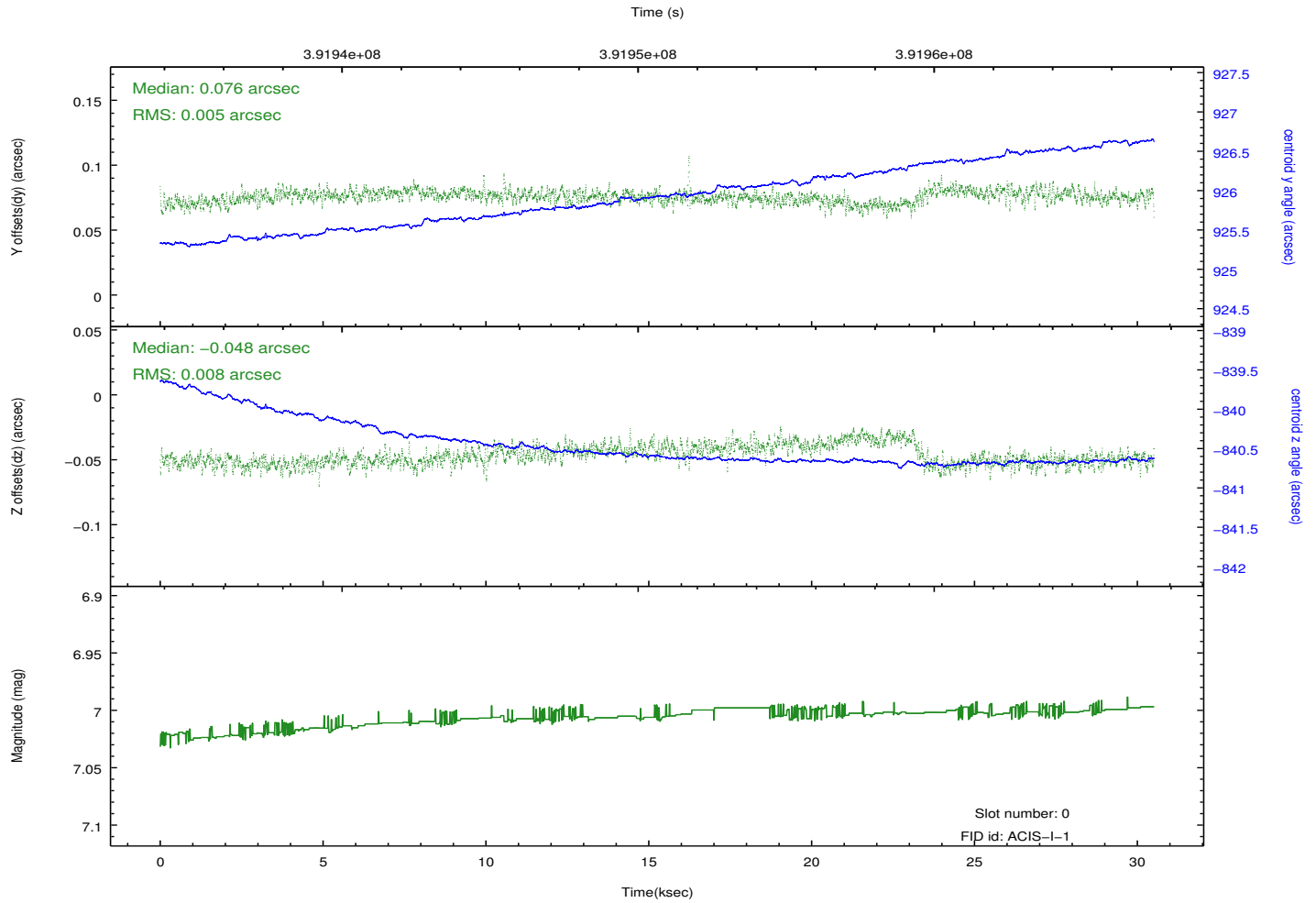
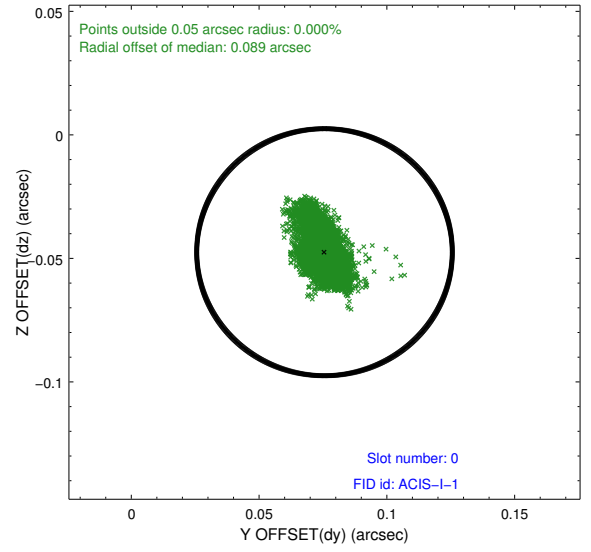
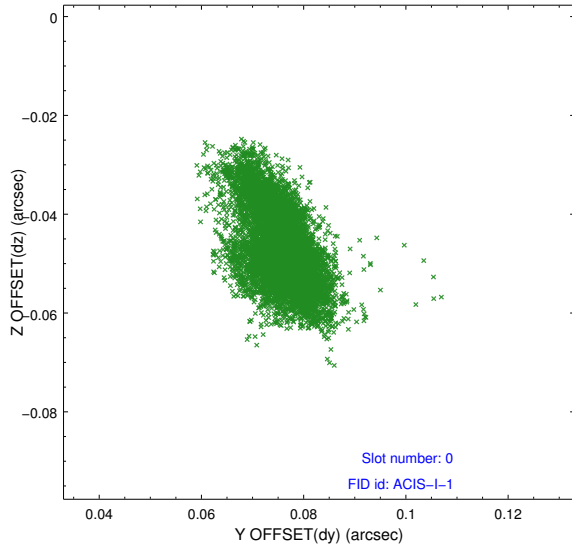


2.4.5 Slot 7

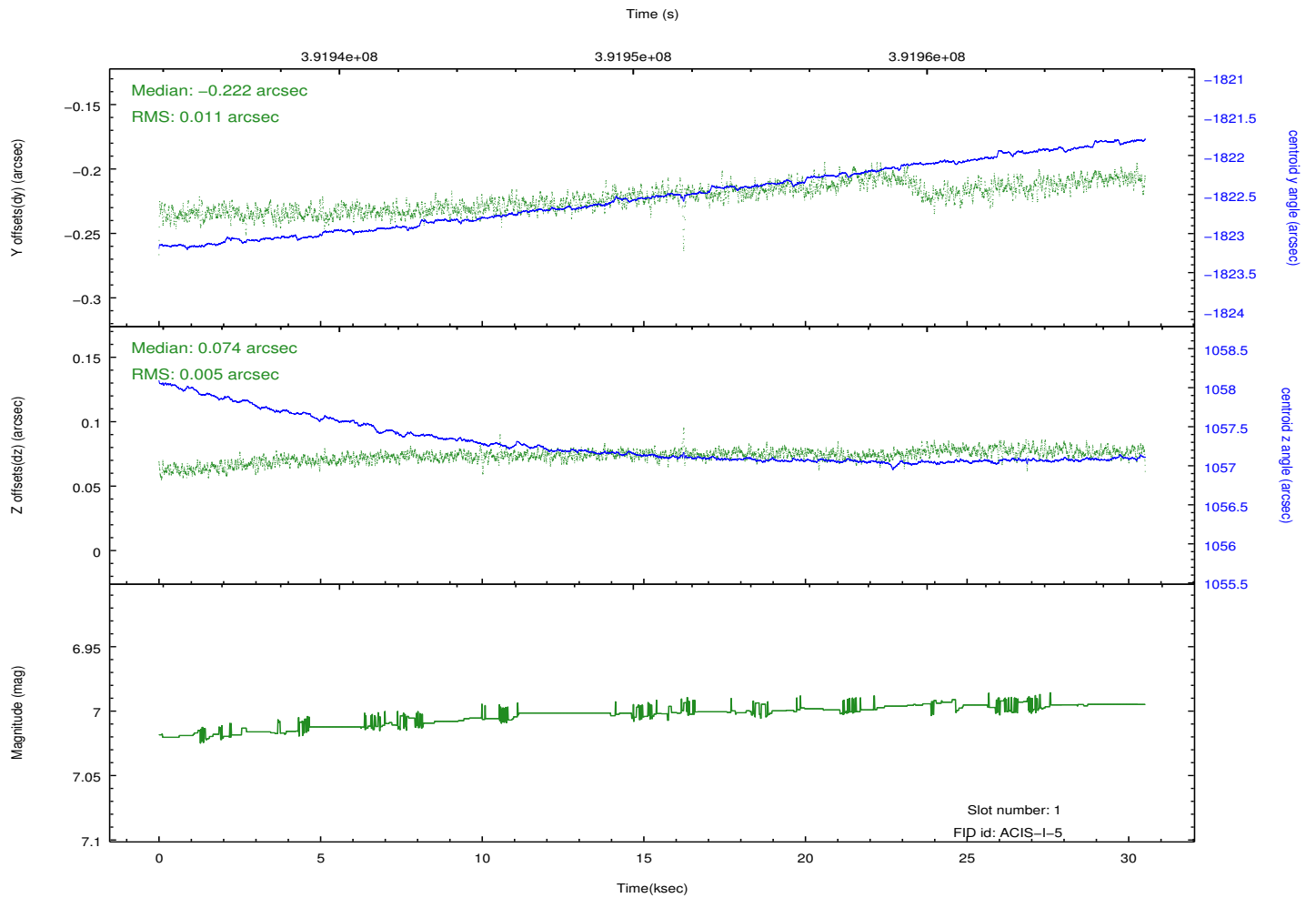
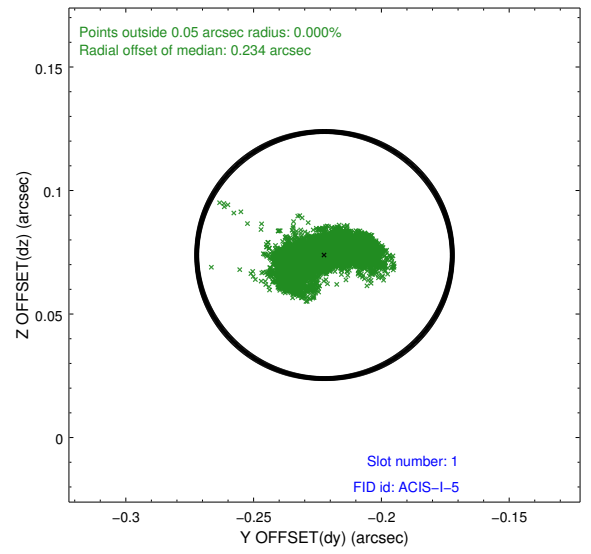
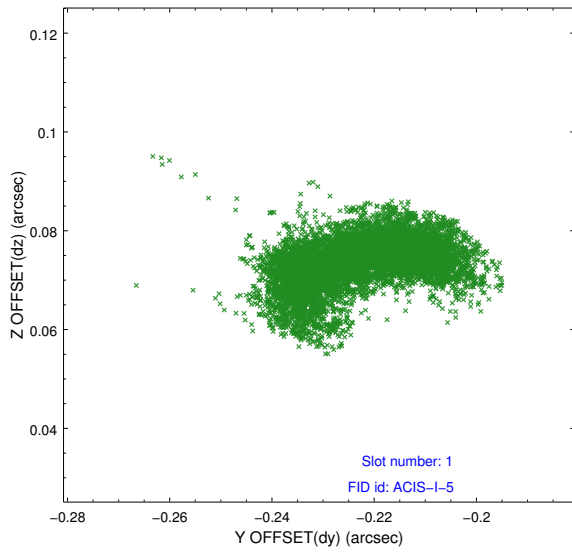


2.5 FID Slots

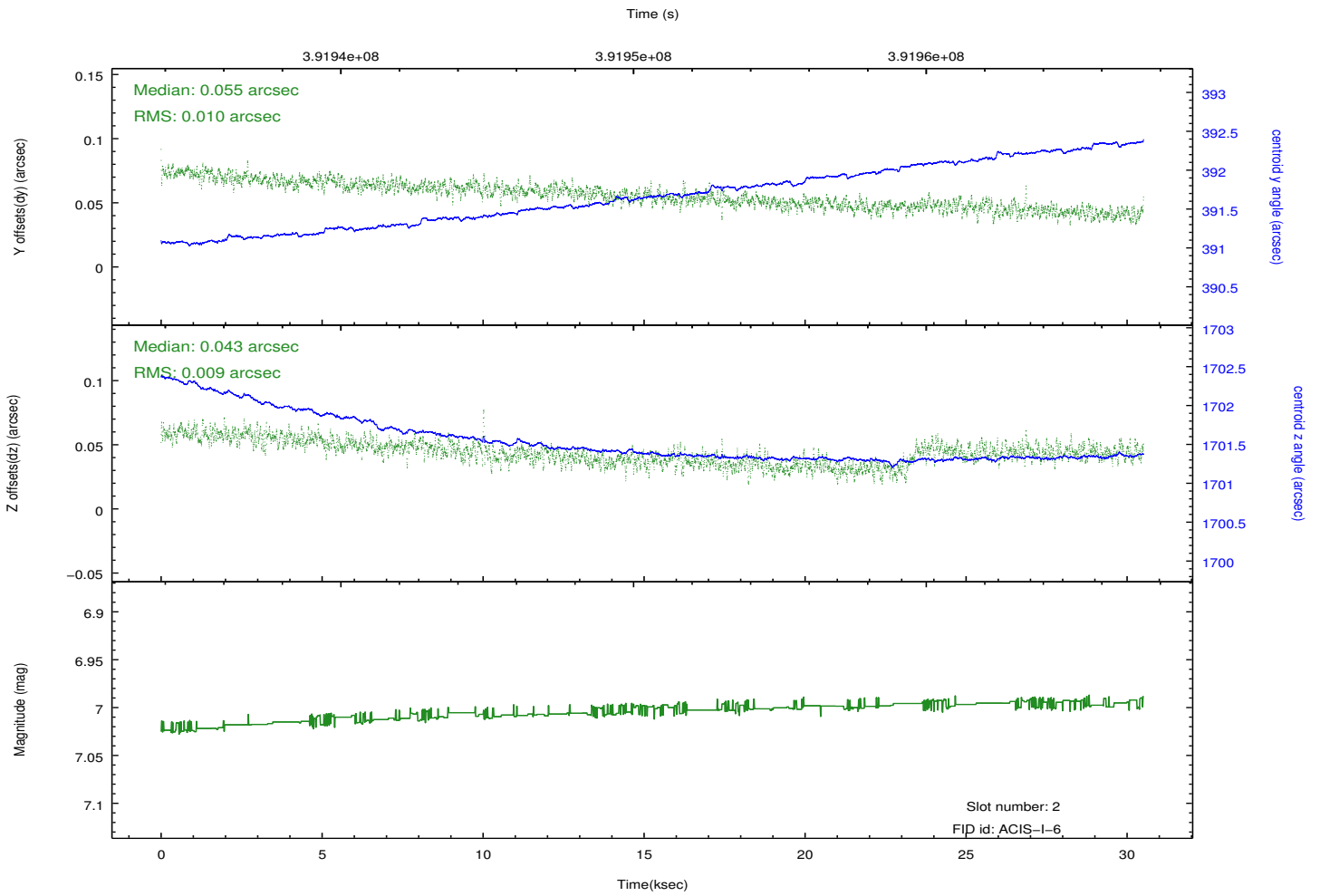
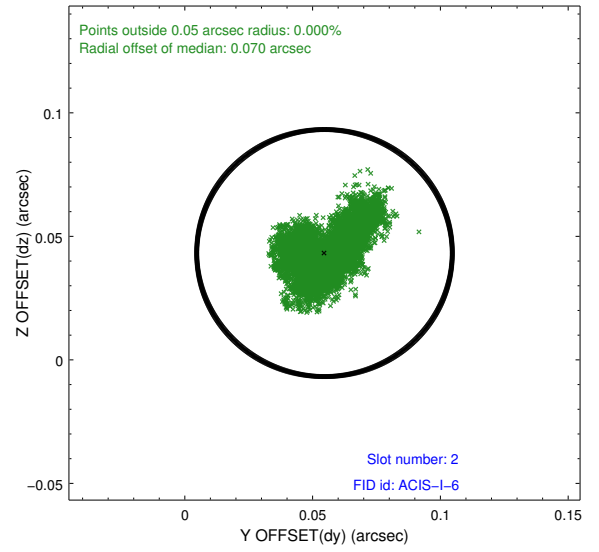
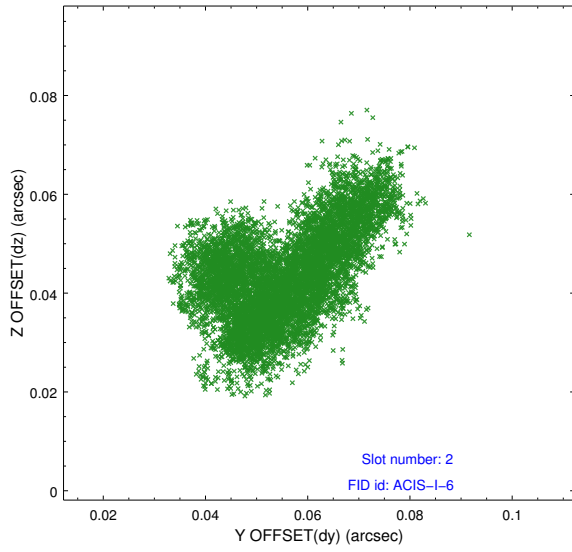
2.5.1 Slot 0



2.5.2 Slot 1



2.5.3 Slot 2



A Summary

A.1 Status

V&V Scientist	Jen Lauer
V&V Date (YYYY-MM-DD)	2012.07.03
V&V Edition	1
V&V Disposition and Status	OK
V&V Charge Time	30.048259260774

A.2 Comments