

V&V Reference Report

L2 ASCDS Version : 8.4.5

Observation 12110 - L2 Version 2
Chandra X-Ray Center

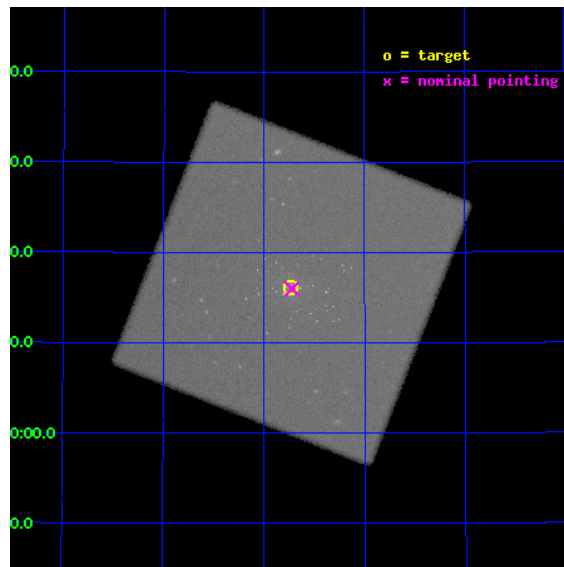
L2 Processing Date : Jul 6 2012

Contents

1	Front	2
2	OBI	3
2.1	OBI	3
2.1.1	Images	3
2.1.2	Parameters	4
2.1.3	Events	4
2.2	Compared Parameters	5
2.3	Aspect	6
2.4	Star Slots	9
2.4.1	Slot 3	9
2.4.2	Slot 4	10
2.4.3	Slot 5	11
2.4.4	Slot 6	12
2.4.5	Slot 7	13
2.5	FID Slots	14
2.5.1	Slot 0	14
2.5.2	Slot 1	15
2.5.3	Slot 2	16
A	Summary	17
A.1	Status	17
A.2	Comments	17

1 Front

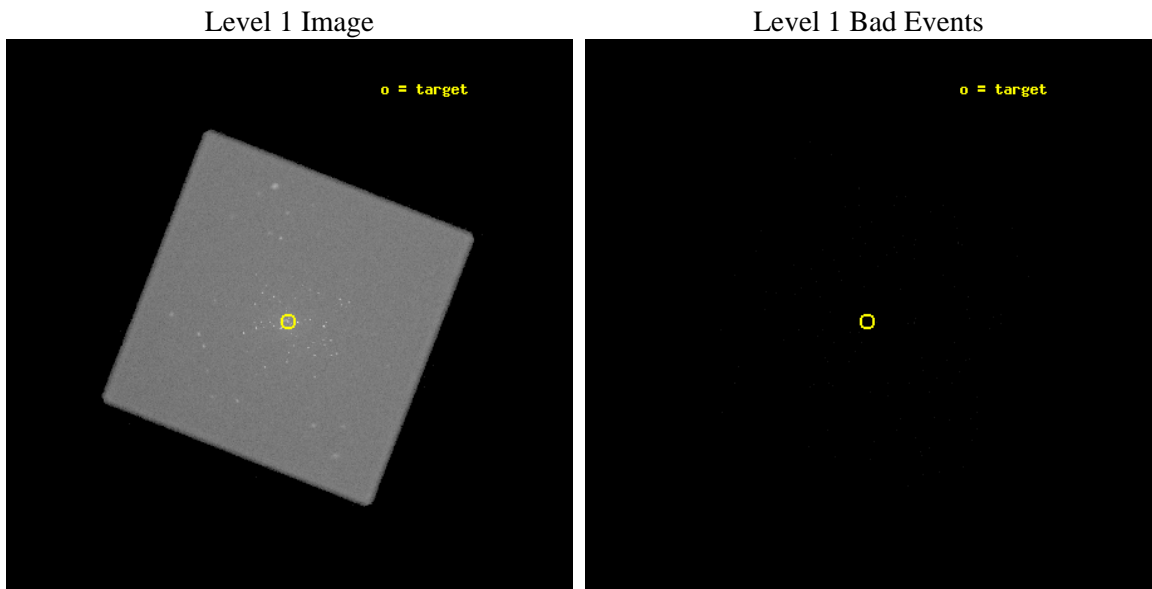
seq_num	300278	Sequence number
obs_id	12110	Observation id
title	Resolving short supersoft source states of optical novae in the core of M31	Proposal title
observer	Dr. Wolfgang Pietsch	Principal investigator
object	M31	Source name
ra_targ	10.684583	Observer's specified target RA [deg]
dec_targ	41.269278	Observer's specified target Dec [deg]
ra_nom	10.680589641615	Nominal RA [deg]
dec_nom	41.266392696591	Nominal Dec [deg]
roll_nom	246.41658605797	Nominal Roll [deg]
revision	2	Processing version of data
ontime	20173.282289267	[s]
livetime	19954.852527203	Ontime multiplied by DTCOR
l2events	1492650	Number of level 2 events



2 OBI

2.1 OBI

2.1.1 Images



2.1.2 Parameters

obi_num	0	Obi number	sched_exp_time	20000.000000	[s] Scheduled observation exposure time
ascdsver	8.4.5	Processing system revision	ontime	20173.282289267	[s]
caldbver	4.5.0	 	l1events	2177087	Number of level 1 events
date	2012-07-06T15:03:19	Date and time of file creation			
revision	2	Processing version of data			

2.1.3 Events

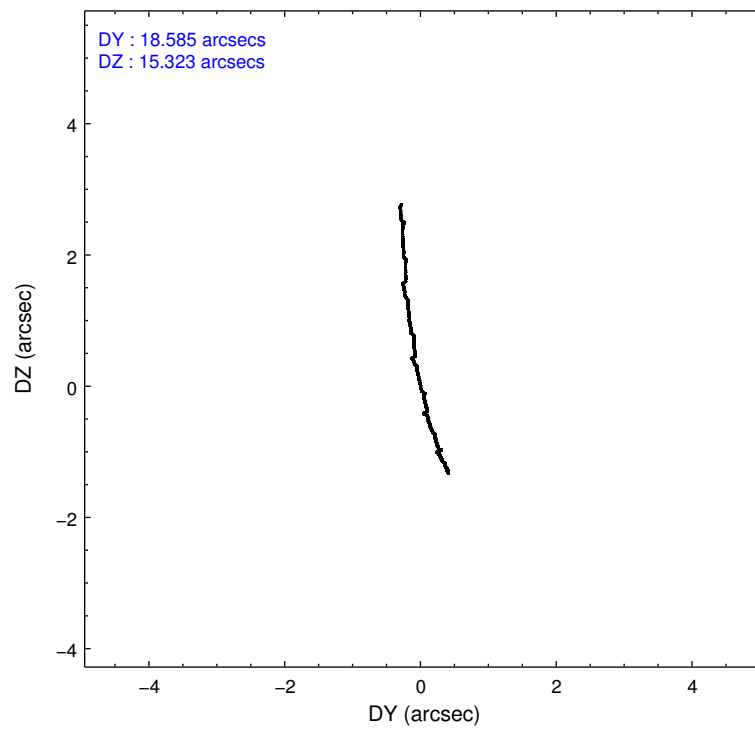
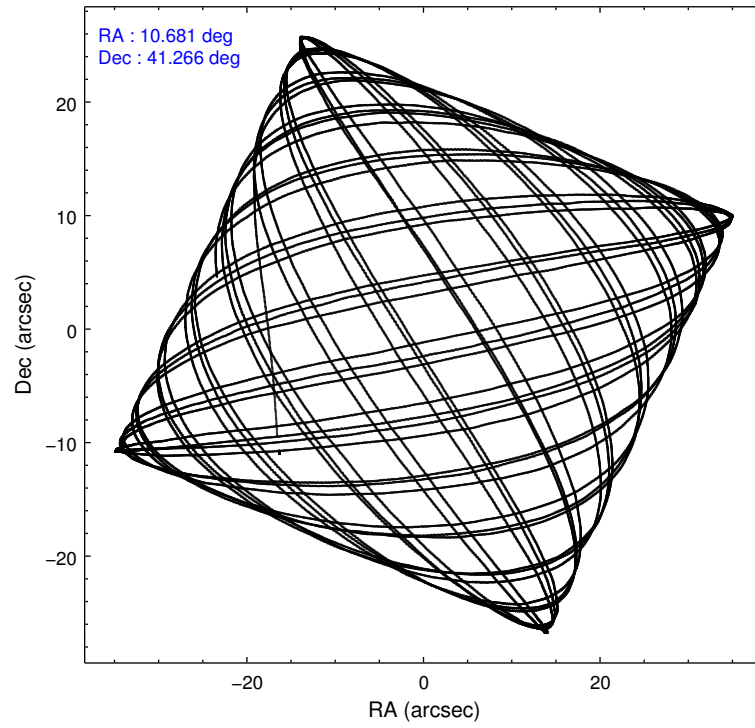
Level 1 Events

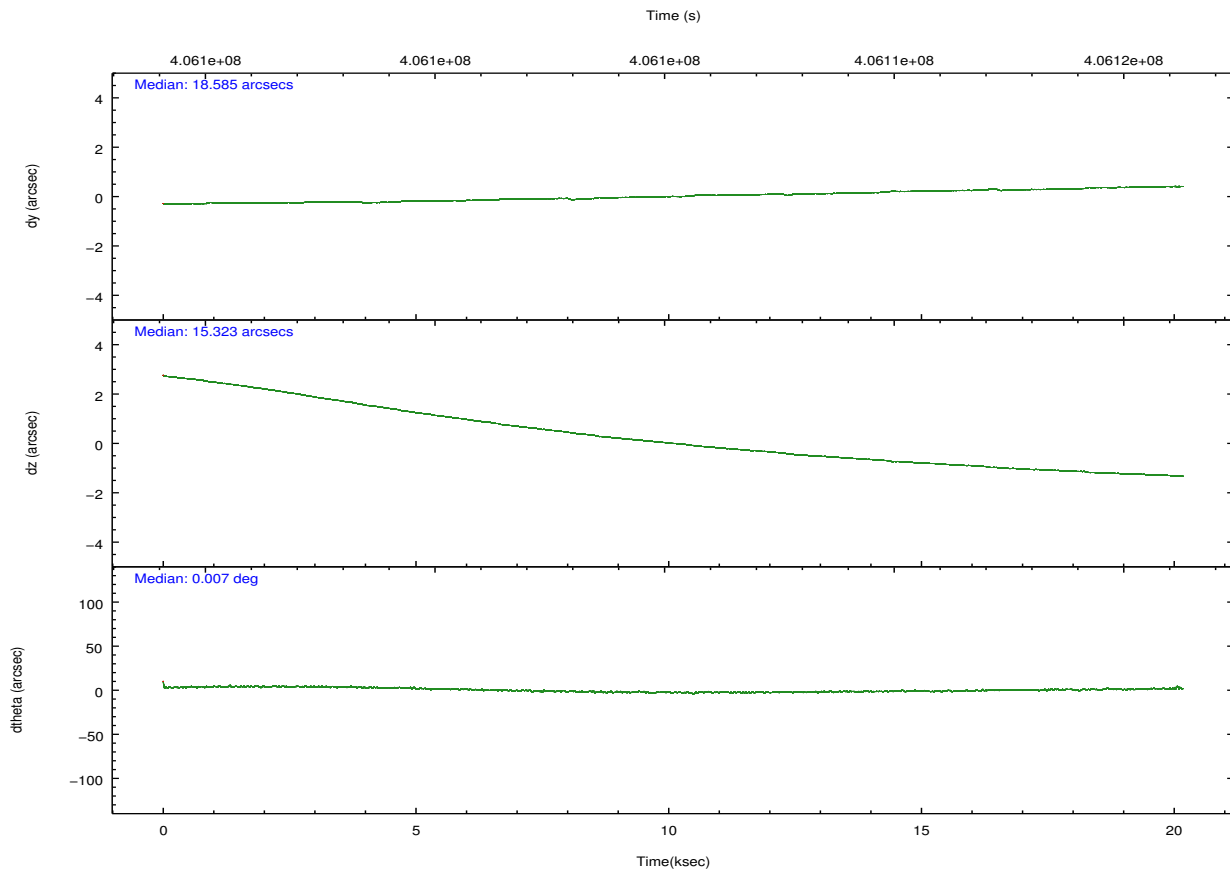
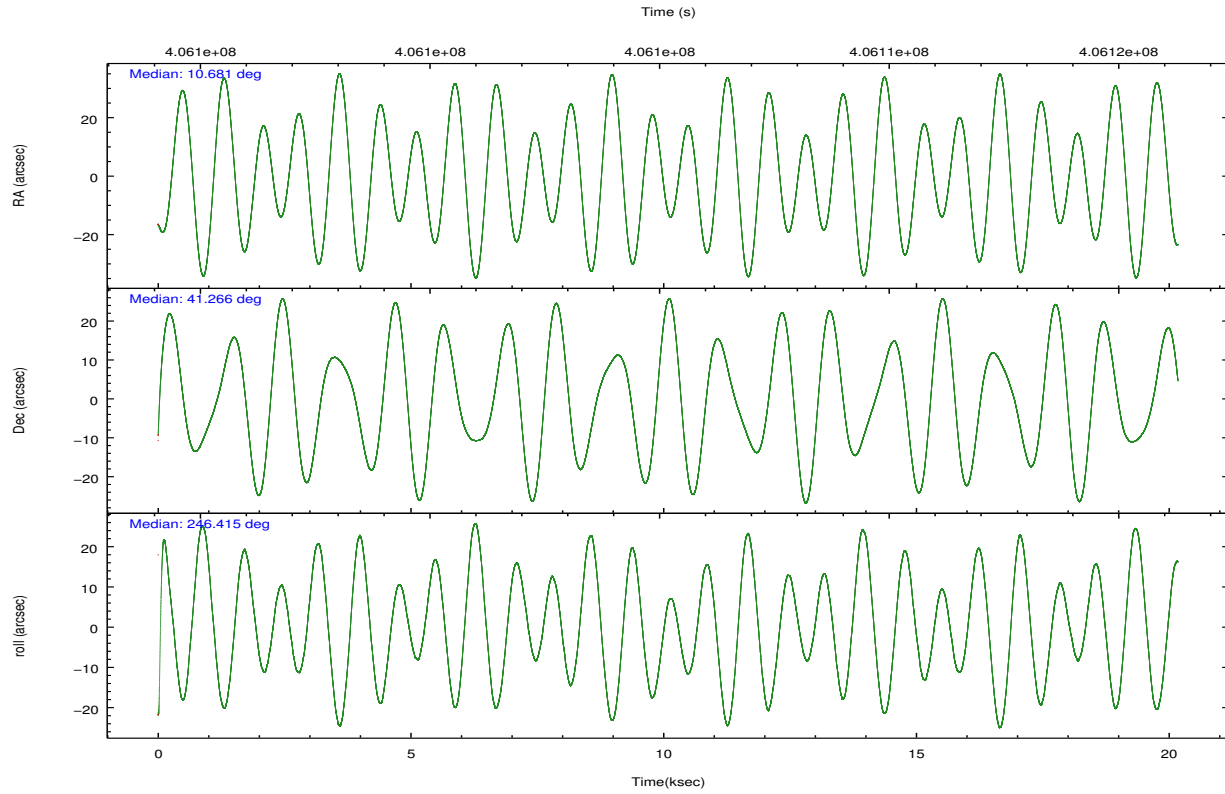
	segment 0
level 1 events	2177087
rejected events	82196
rejected %	3%

2.2 Compared Parameters

Parameter	Planned	Actual	Parameter	Planned	Actual
Instrument	HRC	HRC	Obspar format version number	7	7
Detector	HRC-I	HRC-I	Obspar file type	PREDICTED	ACTUAL
Grating	NONE	NONE	Obspar update status	NONE	UPDATED
Data mode	OBSERVING	OBSERVING			
Observation mode	POINTING	POINTING			
[deg] Pointing RA	10.675708	10.6805896416146			
[deg] Pointing Dec	41.293255	41.2663926965907			
[deg] Pointing Roll	246.515321	246.4165860579725			
[s] Window start time (MET)	405475266.184000	405475266.184000			
[s] Window stop time (MET)	409190406.184000	409190406.184000			
[mm] SIM focus pos	-1.040293	-1.038866356238299			
[mm] SIM defocus	0	0.001426264420575141			
[mm] SIM translation stage pos	126.985494	126.9829799899862			
[mm] SIM translation stage offset	0	0.002508901615314585			
[s] Observation start time (MET)	406095278.184000	406094333.69693			
Observation start date	2010-11-14T04:13:32	2010-11-14T03:58:53			
[s] Observation end time (MET)	406115278.184000	406116172.86055			
Observation end date	2010-11-14T09:46:52	2010-11-14T10:02:52			

2.3 Aspect



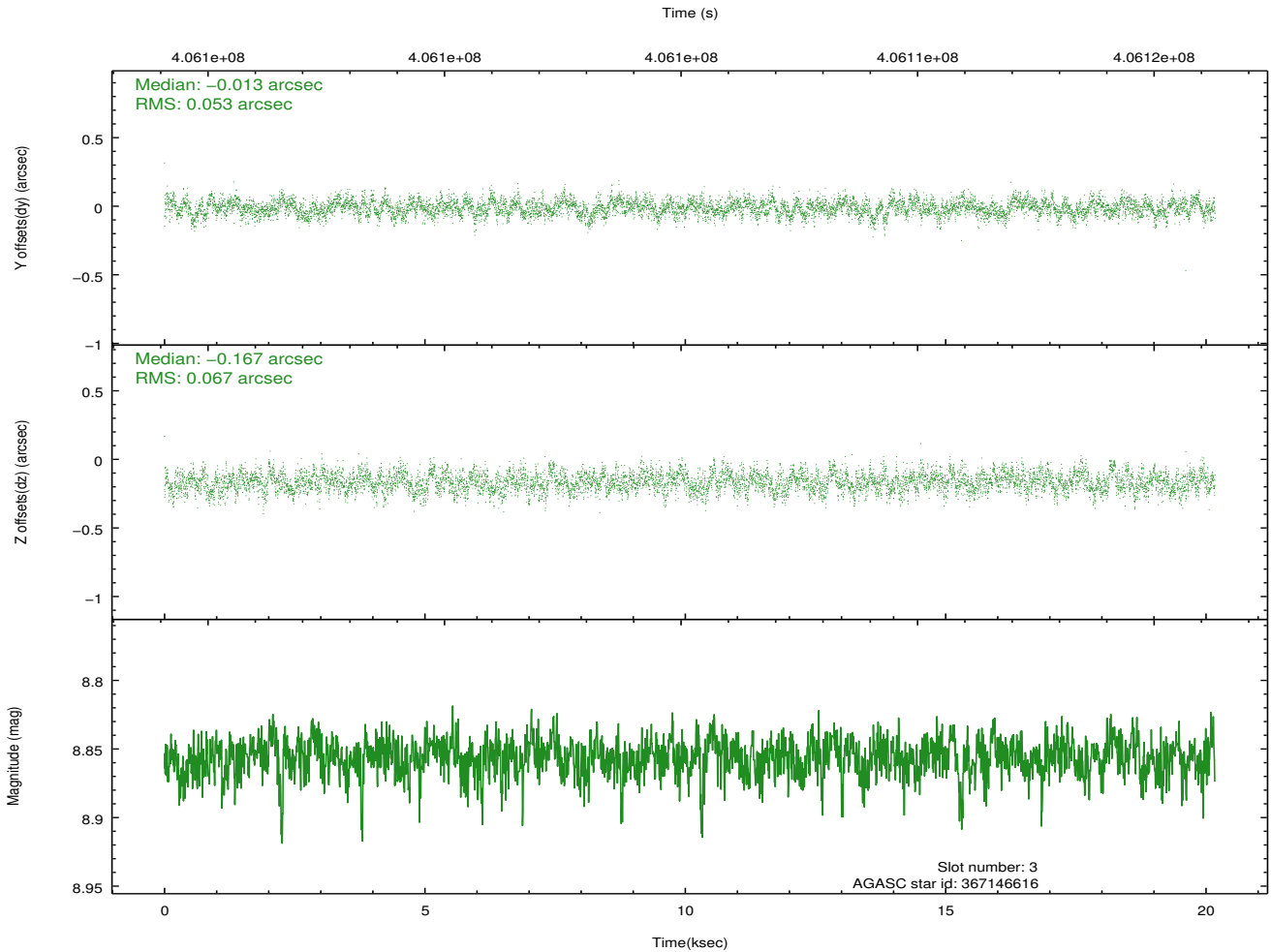
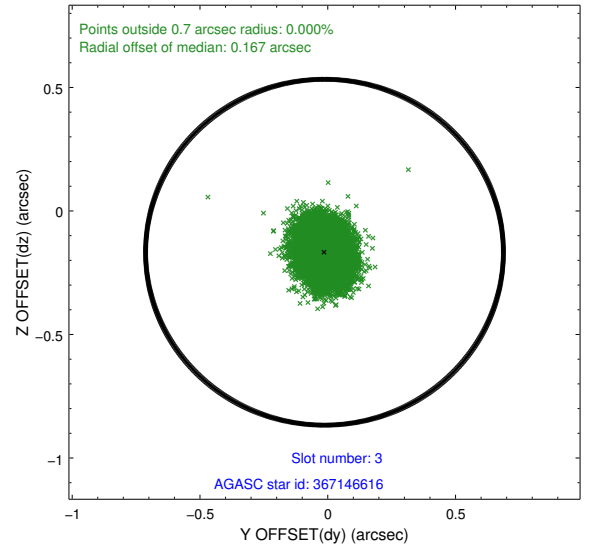
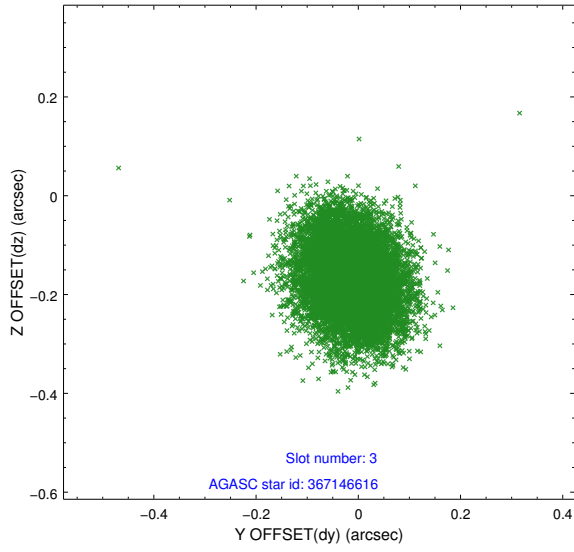


Slot Statistics

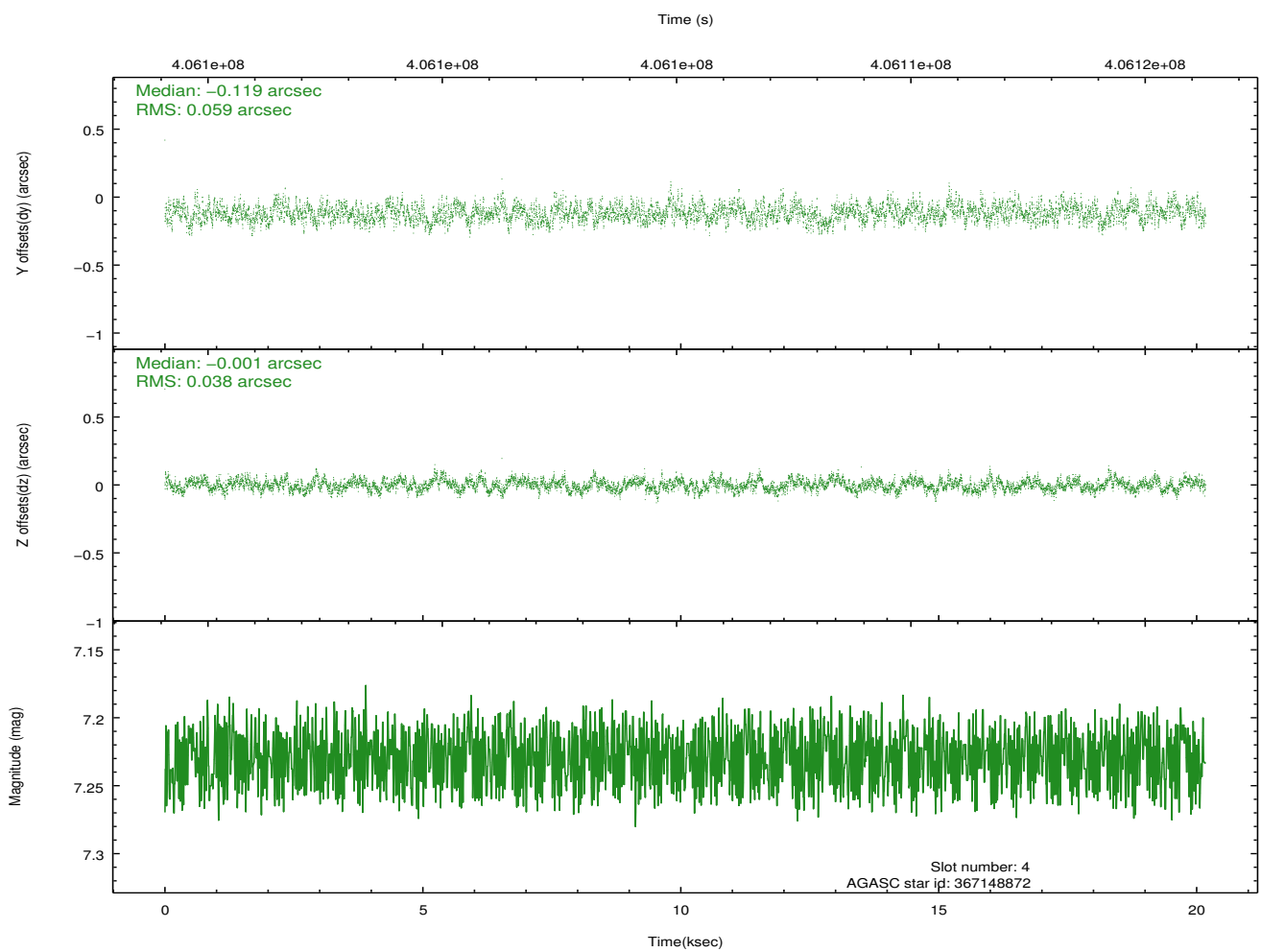
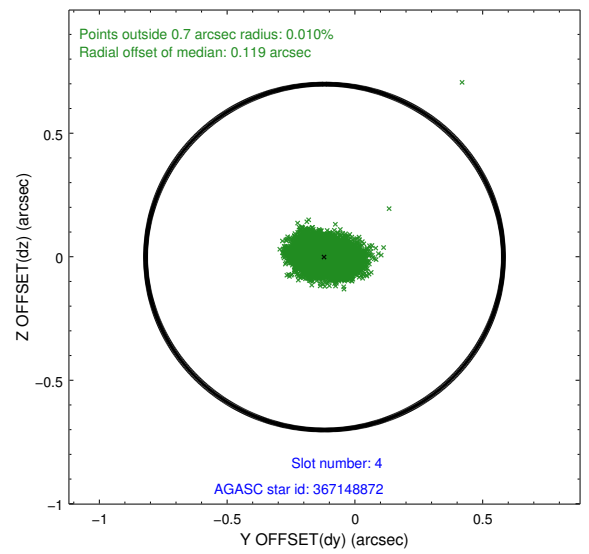
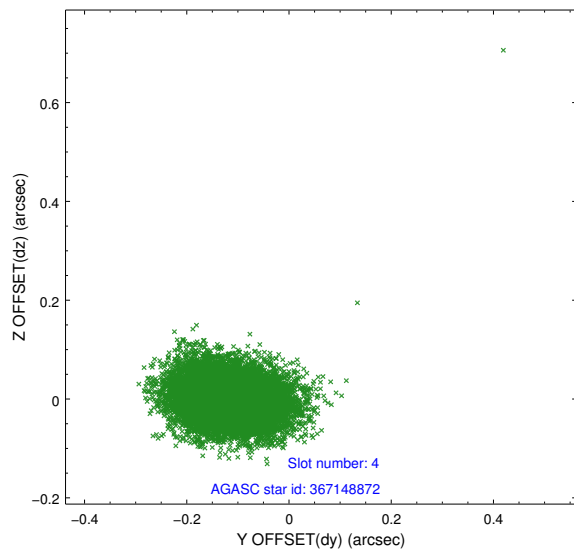
slot	status	id	mag	n_pts	med_dy	med_dz	dr1	dr2	ra	dec	mean_y	mean_z
0	FID	HRC-I-1	7.02	4921	-0.096	0.005	0.018	0.046	0.000000	0.000000	-774.57	-1303.70
1	FID	HRC-I-2	7.05	4920	0.257	-0.131	0.021	0.051	0.000000	0.000000	838.25	-1305.65
2	FID	HRC-I-3	7.10	4920	-0.043	0.038	0.020	0.044	0.000000	0.000000	-1202.89	1000.62
3	GUIDE	367146616	8.86	9839	-0.013	-0.167	0.091	0.145	11.418645	41.190163	-469.12	1990.55
4	GUIDE	367148872	7.23	9842	-0.119	-0.001	0.074	0.122	10.505940	40.688258	2182.88	443.46
5	GUIDE	367657896	9.01	9798	0.002	0.068	0.105	0.180	11.197765	41.313576	-632.78	1264.22
6	GUIDE	367663272	9.29	9802	0.082	0.178	0.112	0.178	10.656279	41.699429	-1319.04	-630.65
7	GUIDE	367674552	8.86	9817	0.045	-0.071	0.087	0.140	11.016238	41.570845	-1283.20	442.50

2.4 Star Slots

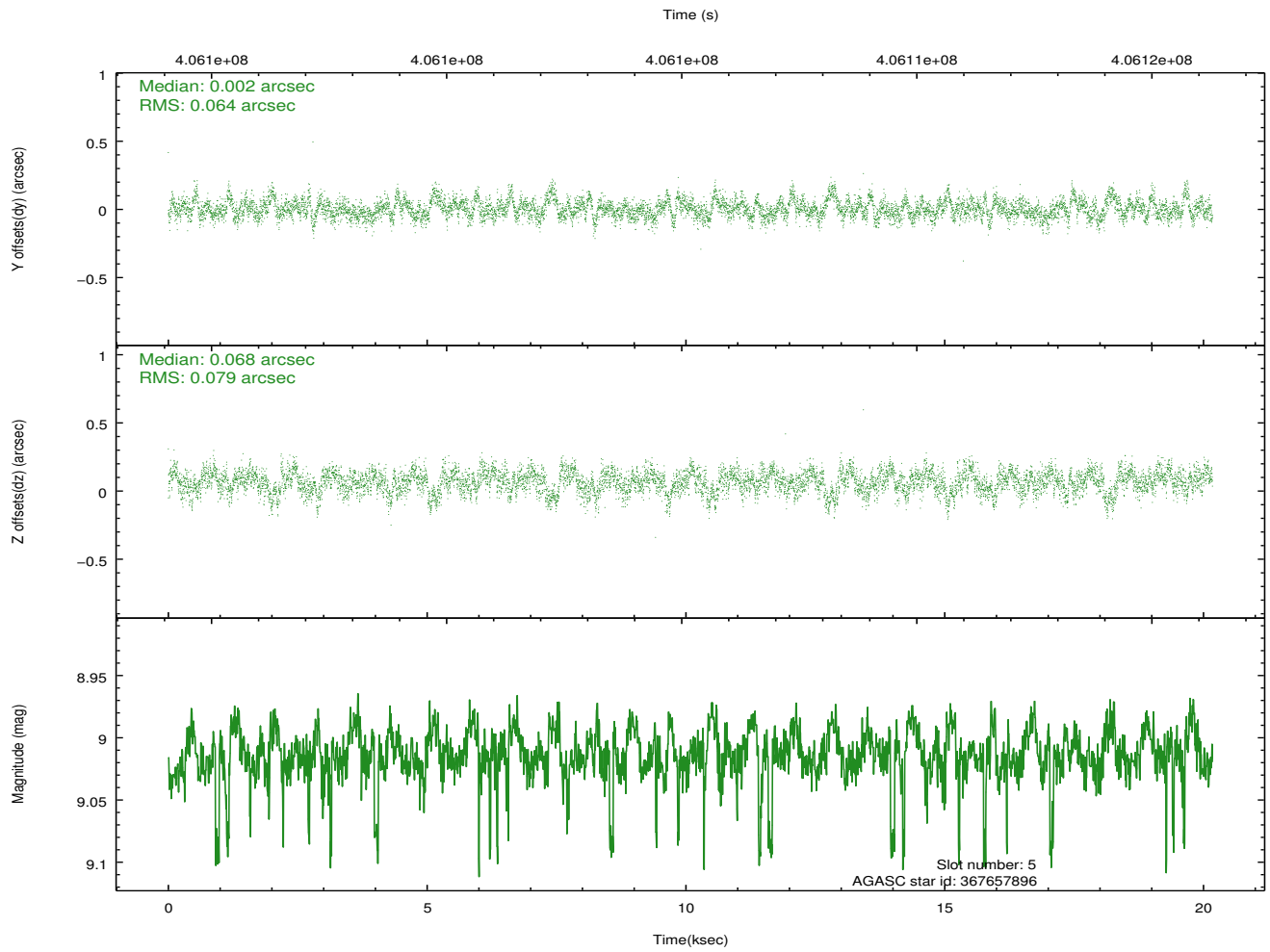
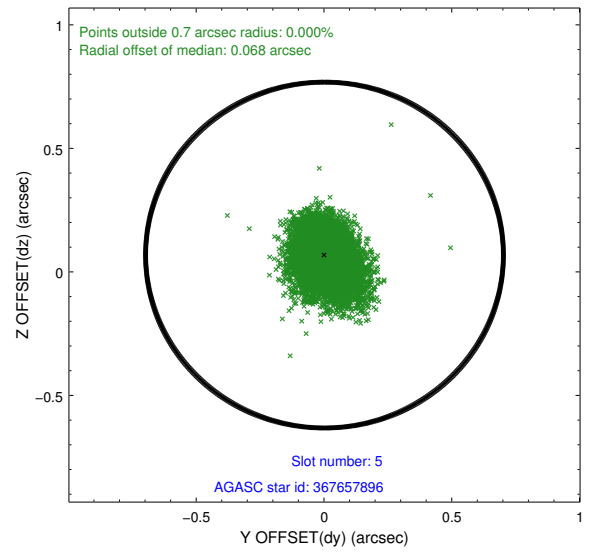
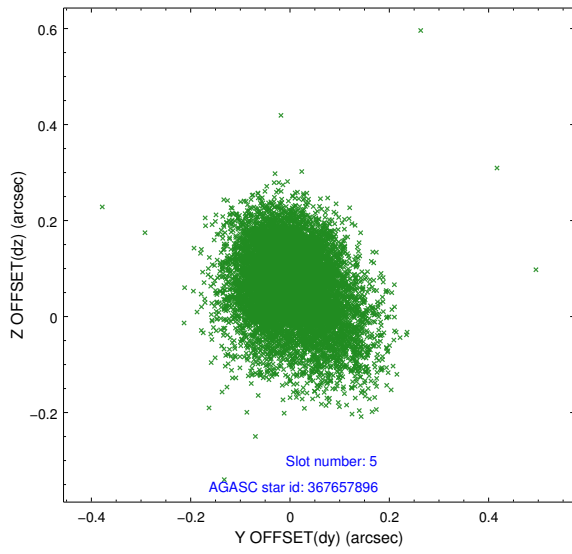
2.4.1 Slot 3



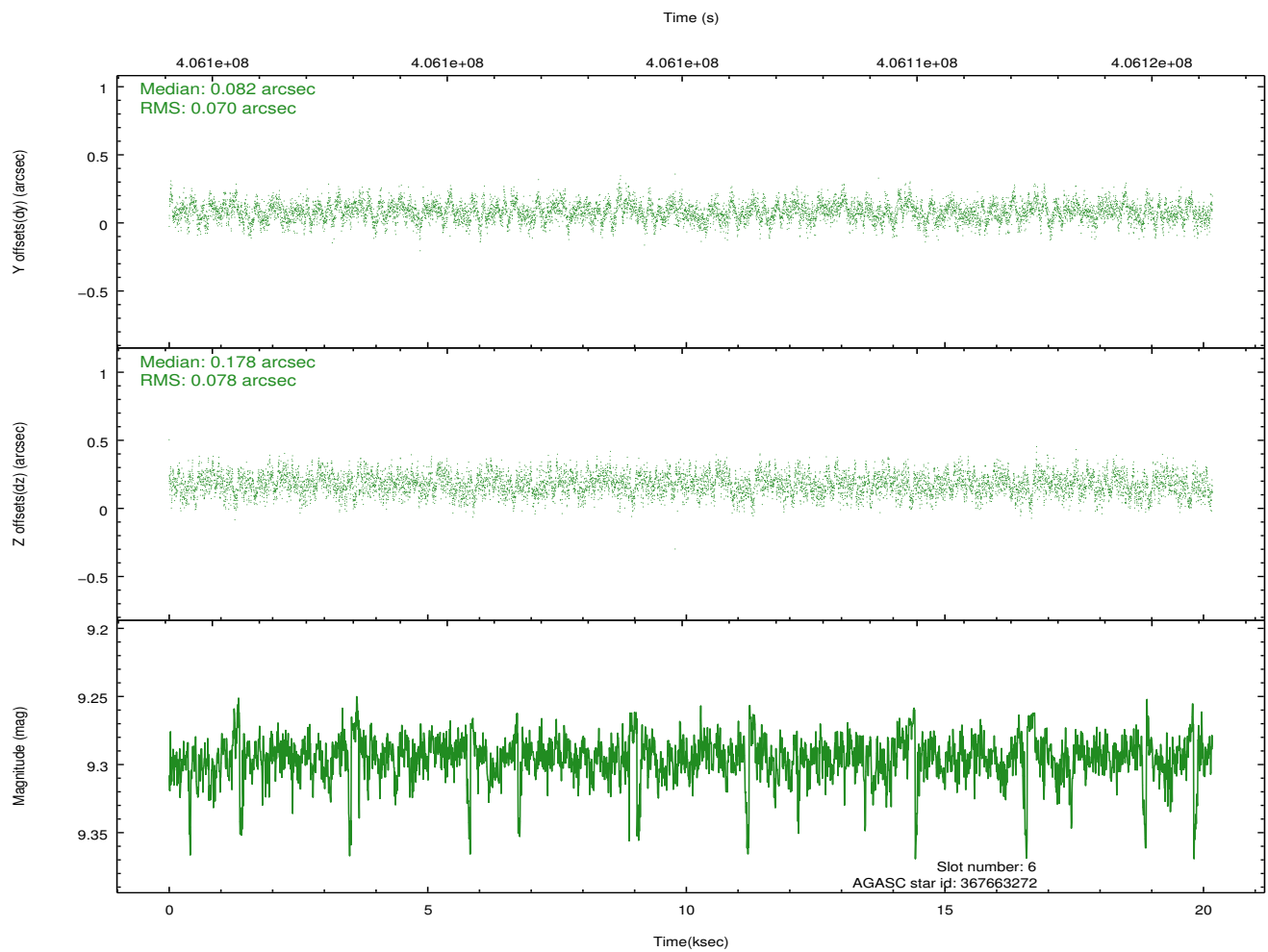
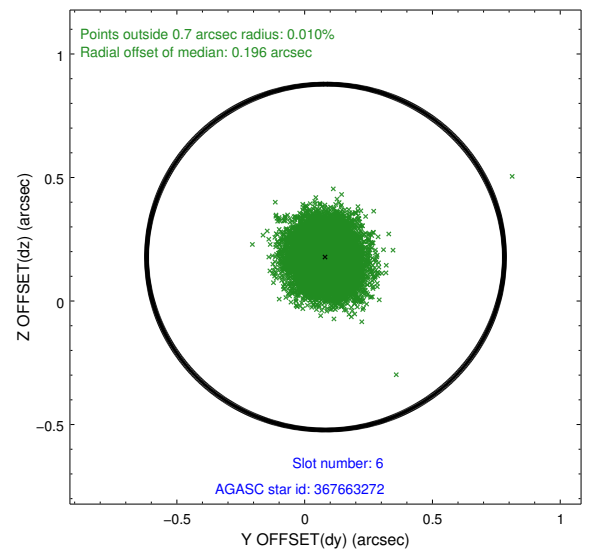
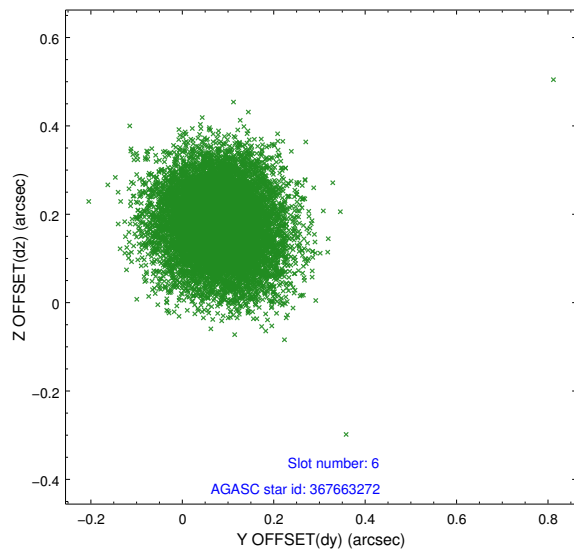
2.4.2 Slot 4



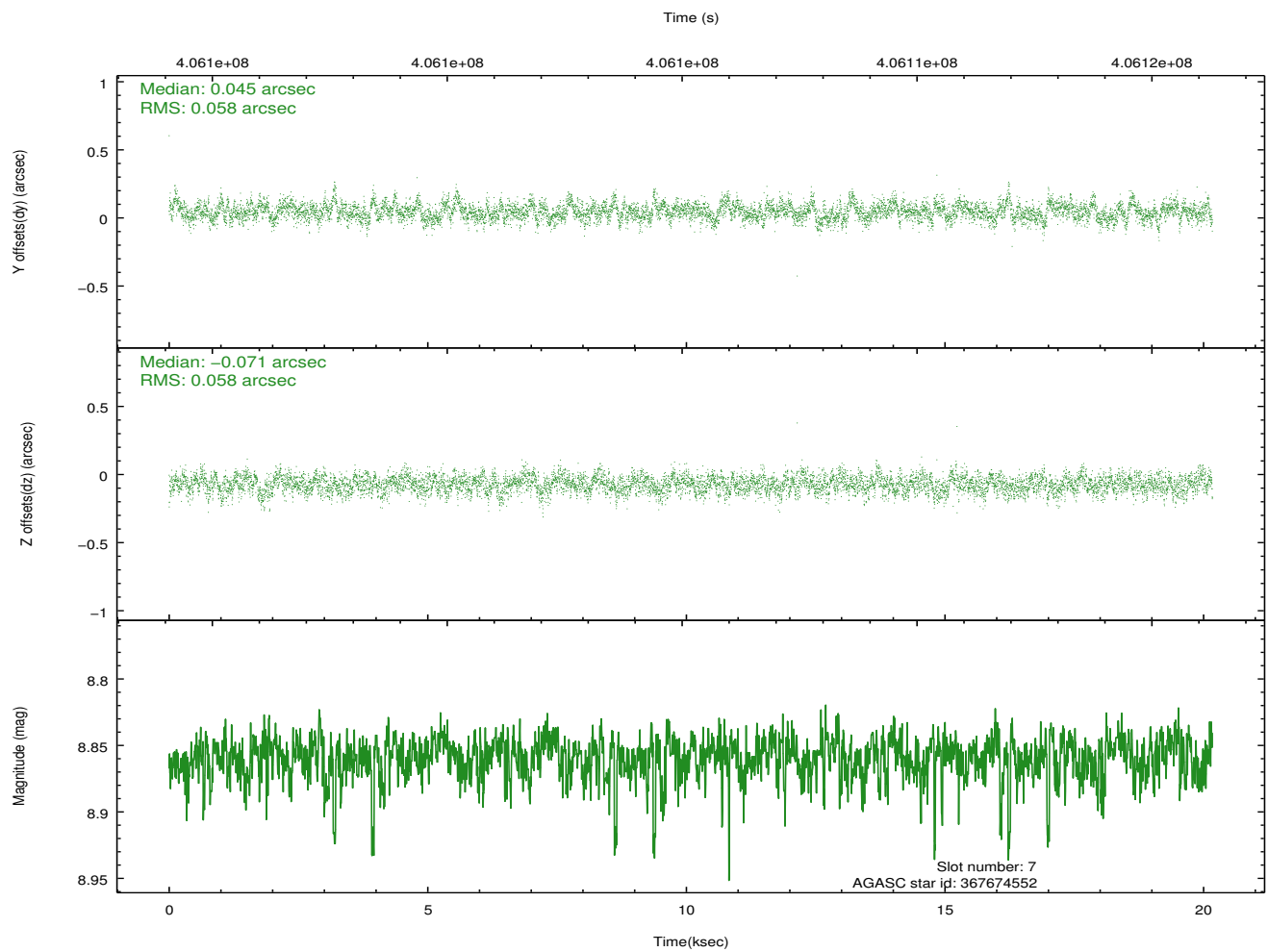
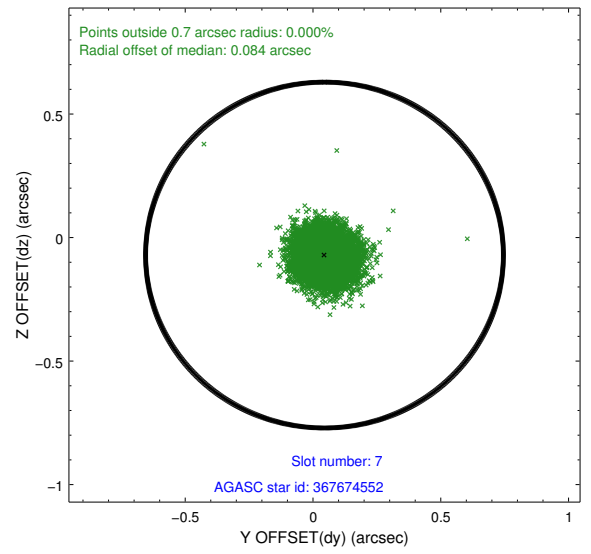
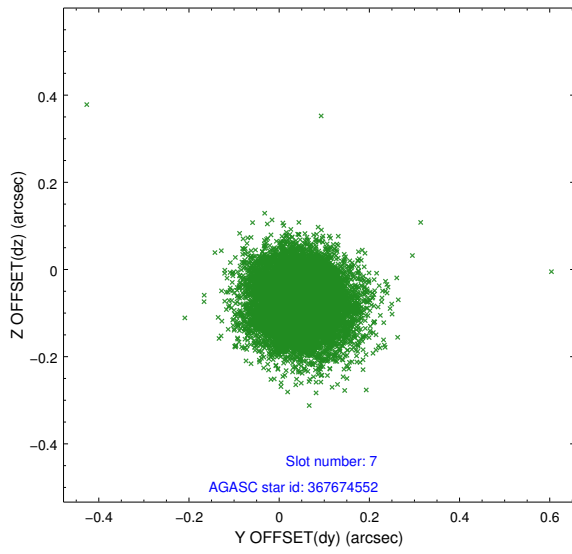
2.4.3 Slot 5



2.4.4 Slot 6

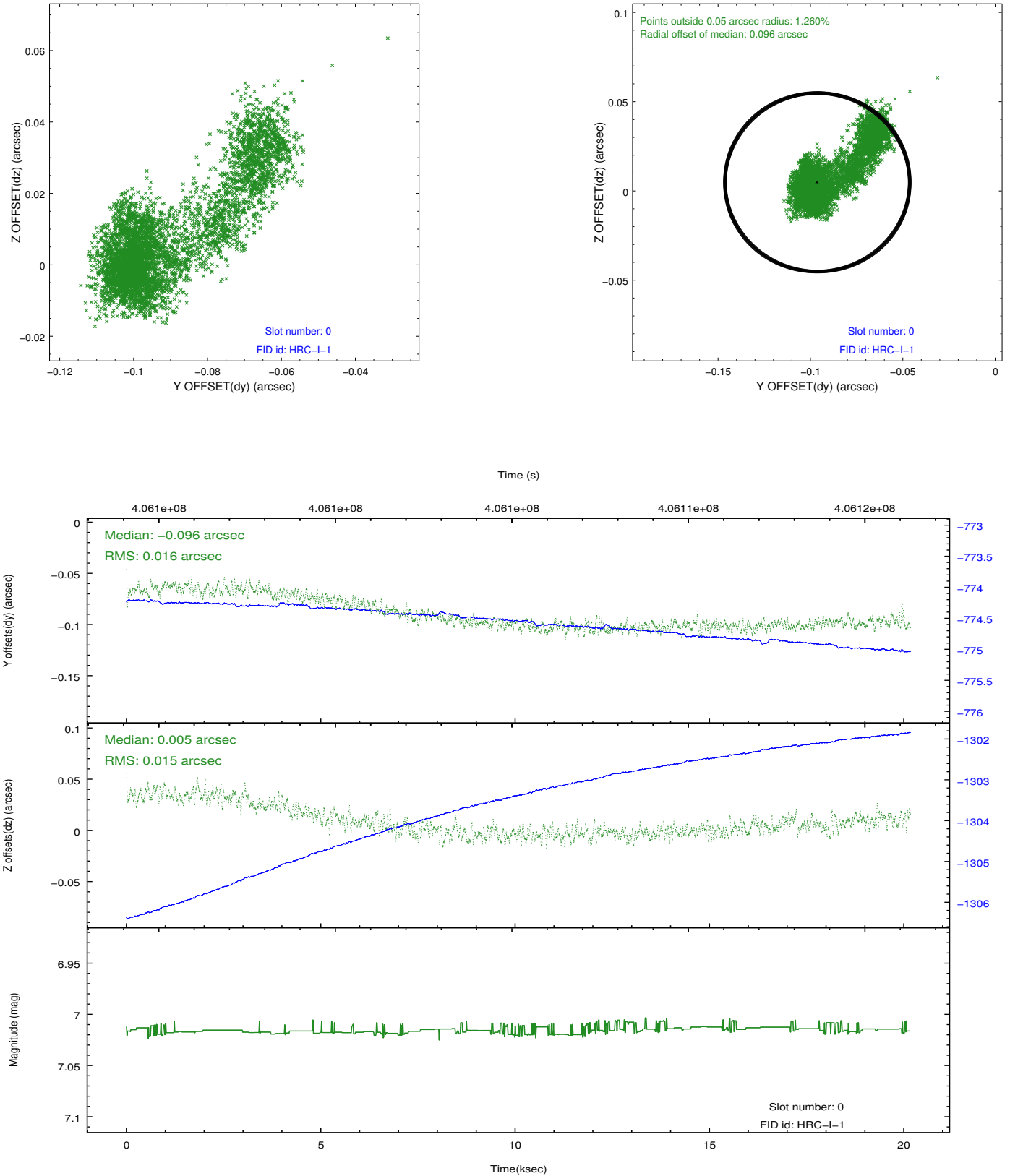


2.4.5 Slot 7

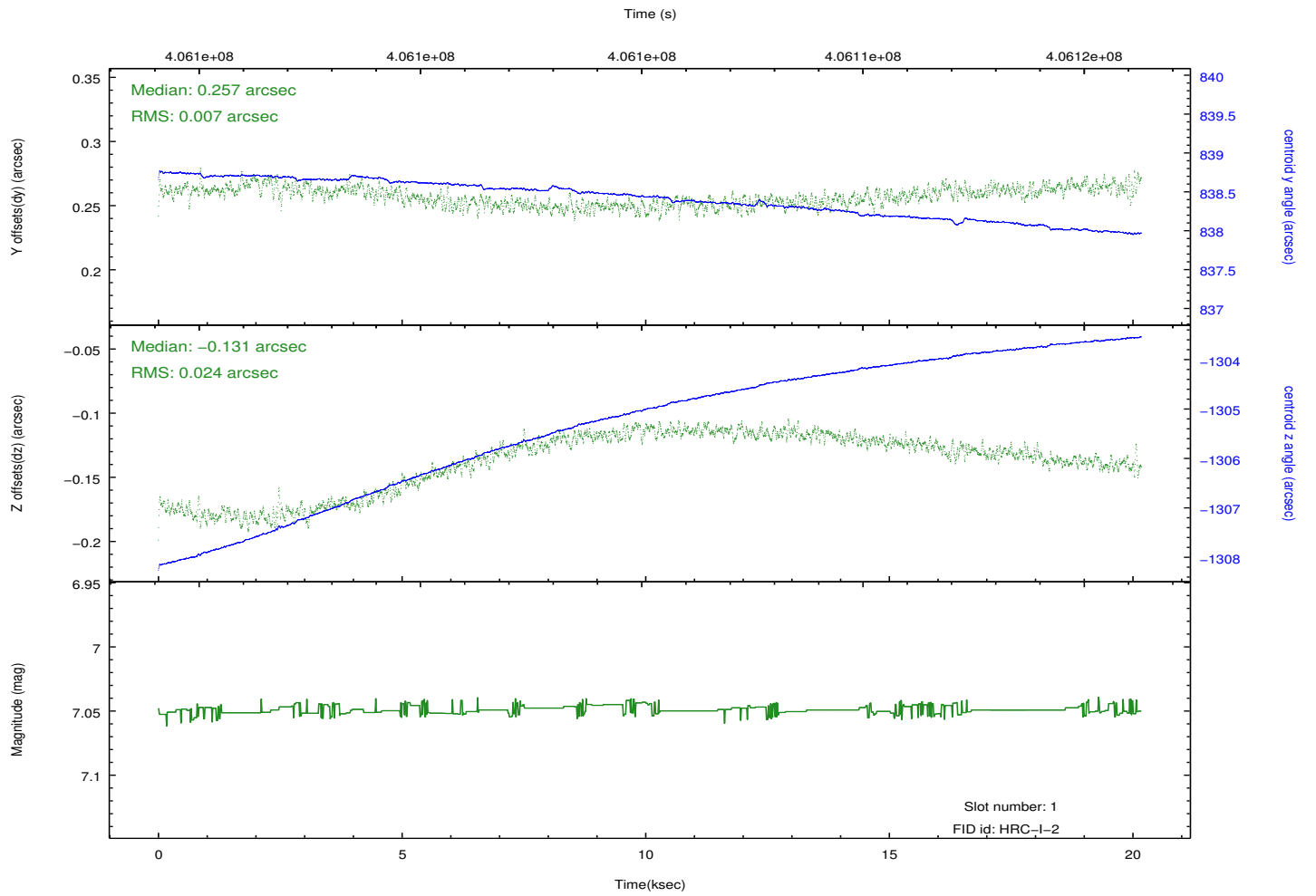
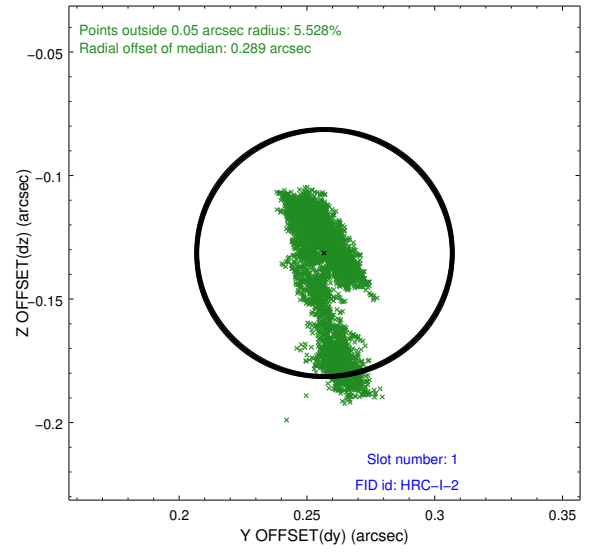
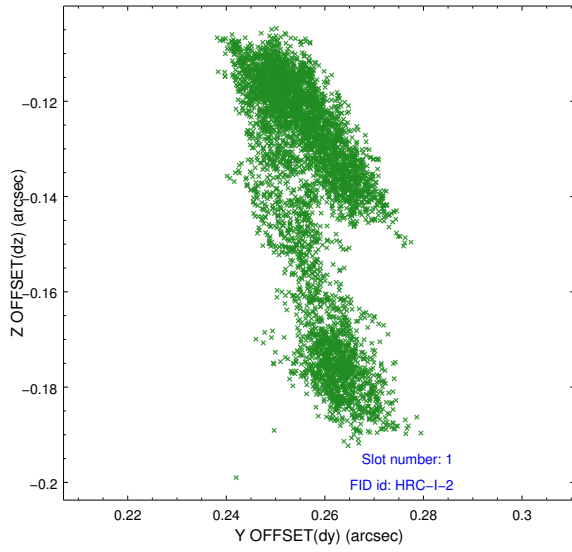


2.5 FID Slots

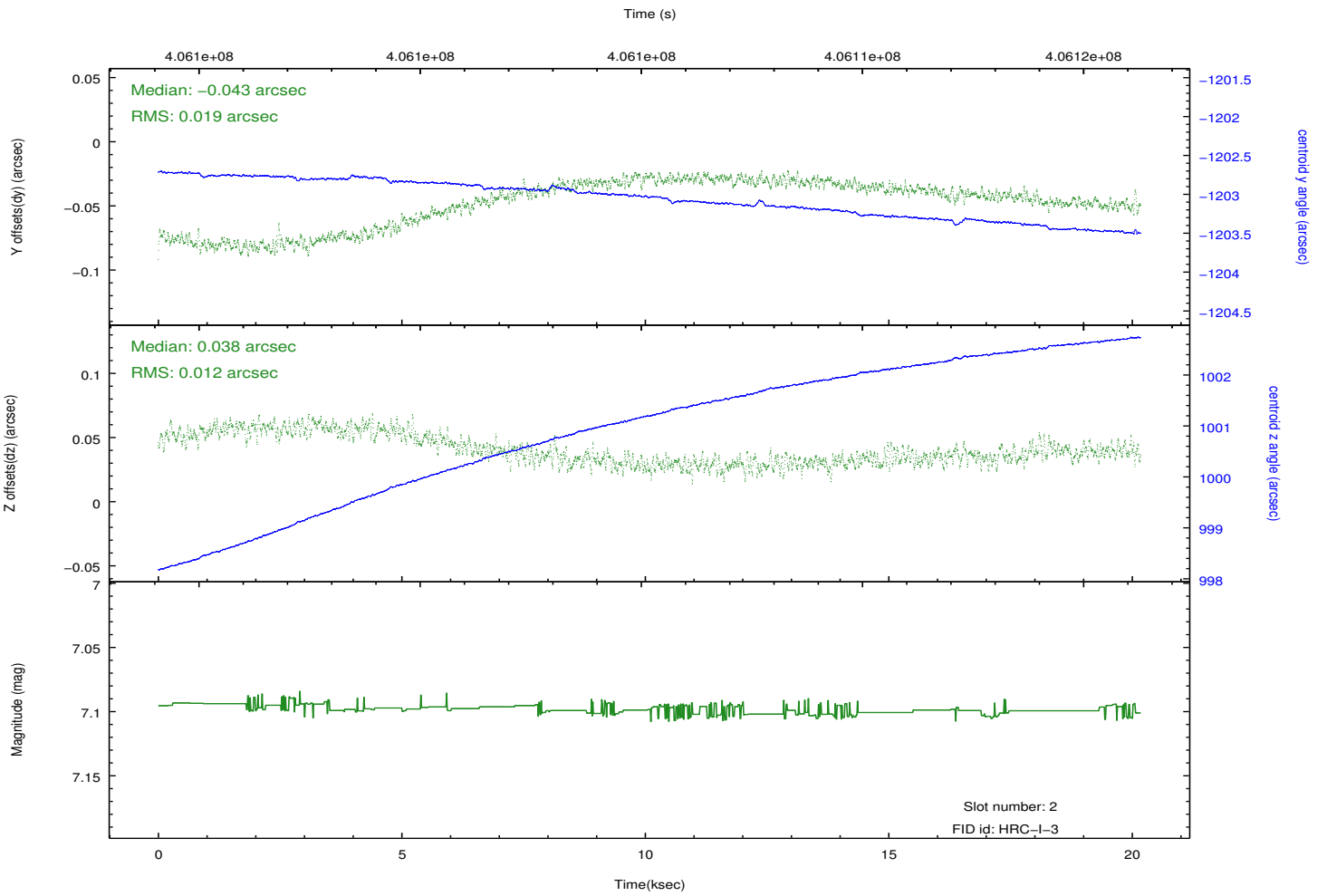
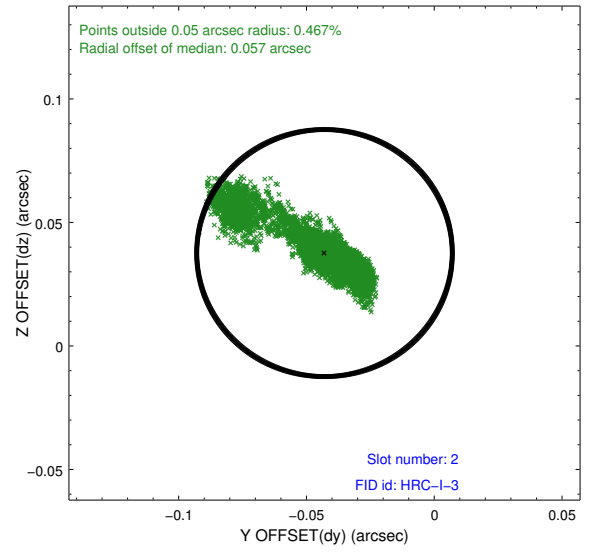
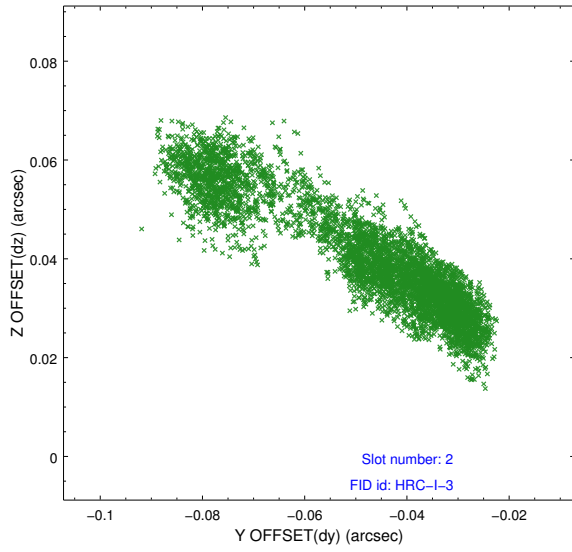
2.5.1 Slot 0



2.5.2 Slot 1



2.5.3 Slot 2



A Summary

A.1 Status

V&V Scientist	Jen Lauer
V&V Date (YYYY-MM-DD)	2012.07.16
V&V Edition	1
V&V Disposition and Status	OK
V&V Charge Time	20.17328228873

A.2 Comments

Joint Proposal: CXO-XMM. Window constraint met.