

V&V Reference Report

L2 ASCDS Version : 8.4.5

Observation 12140 - L2 Version 2
Chandra X-Ray Center

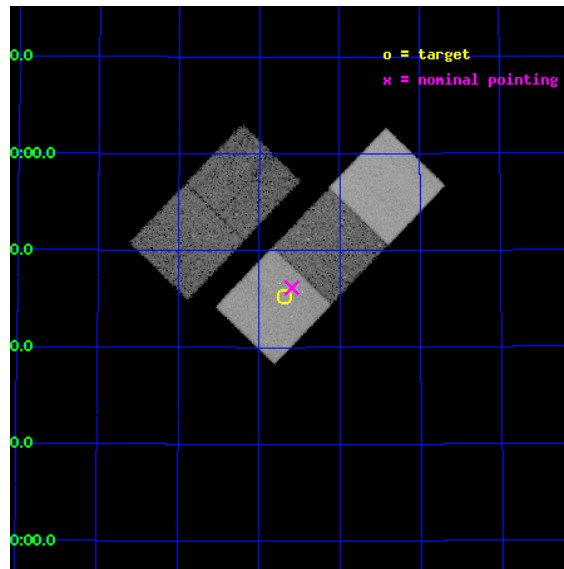
L2 Processing Date : Jun 24 2012

Contents

1	Front	2
2	OBI	3
2.1	OBI	3
2.1.1	Images	3
2.1.2	Bias	3
2.1.3	Parameters	4
2.1.4	Events	4
2.2	Compared Parameters	5
2.3	Aspect	6
2.4	Star Slots	9
2.4.1	Slot 3	9
2.4.2	Slot 4	10
2.4.3	Slot 5	11
2.4.4	Slot 6	12
2.4.5	Slot 7	13
2.5	FID Slots	14
2.5.1	Slot 0	14
2.5.2	Slot 1	15
2.5.3	Slot 2	16
A	Summary	17
A.1	Status	17
A.2	Comments	17

1 Front

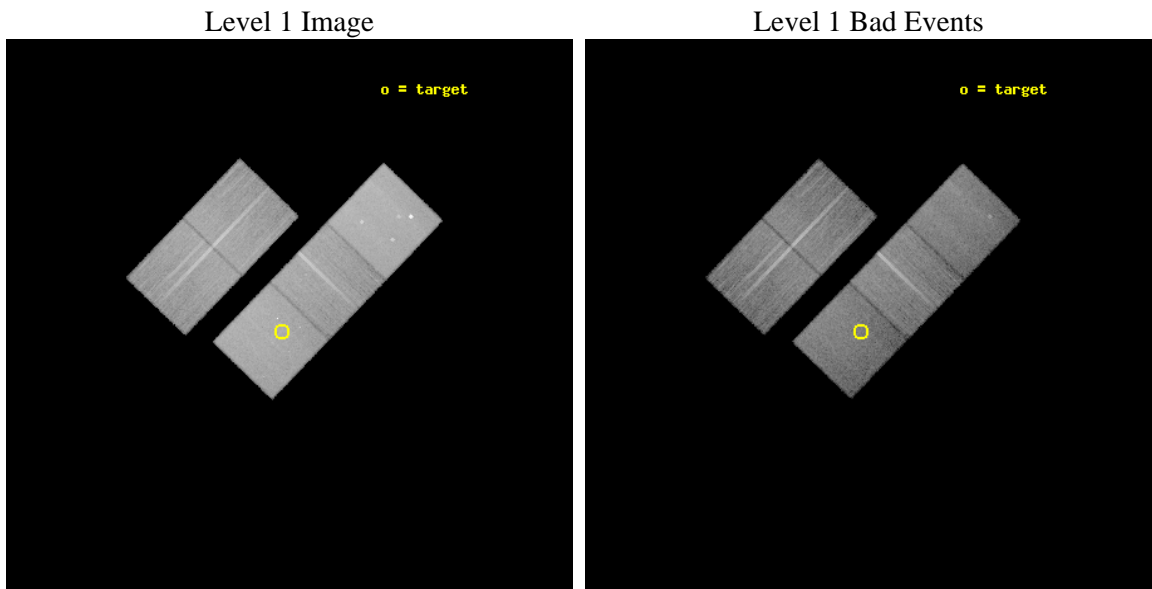
seq_num	800860	Sequence number
obs_id	12140	Observation id
title	Massive Galaxy Clusters at High Redshift from the Spitzer SpARCS Survey	Proposal title
observer	Dr. Erica Ellingson	Principal investigator
object	EN1-349	Source name
dtycycle	0	
cycle	P	events from which exps? Prim/Second/Both
ra_targ	244.172083	Observer's specified target RA [deg]
dec_targ	55.753333	Observer's specified target Dec [deg]
ra_nom	244.14857083539	Nominal RA [deg]
dec_nom	55.769456558214	Nominal Dec [deg]
roll_nom	133.92607517342	Nominal Roll [deg]
revision	2	Processing version of data
ontime	23160.100178123	Sum of GTIs [s]
livetime	22857.496419078	Livetime [s]
ontime2	23156.959257364	Sum of GTIs [s]
ontime3	23156.959207714	Sum of GTIs [s]
ontime5	23160.100178123	Sum of GTIs [s]
ontime6	23156.959187746	Sum of GTIs [s]
ontime7	23160.100178123	Sum of GTIs [s]
l2events	265918	Number of level 2 events



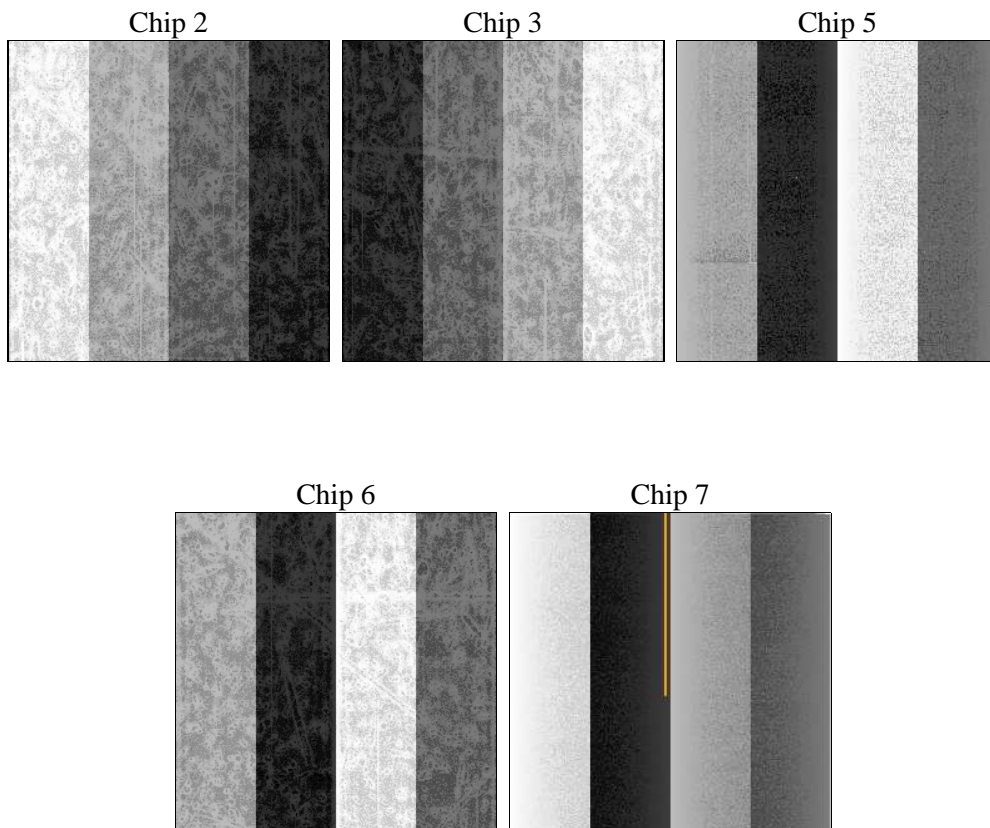
2 OBI

2.1 OBI

2.1.1 Images



2.1.2 Bias



2.1.3 Parameters

obi_num	1	Obi number	sched_exp_time	23000.000000	[s] Scheduled observation exposure time
ascdsver	8.4.5	Processing system revision	ontime	23160.100178123	Sum of GTIs [s]
caldbver	4.4.10	 	ontime2	23156.959257364	Sum of GTIs [s]
date	2012-06-24T08:37:39	Date and time of file creation	ontime3	23156.959207714	Sum of GTIs [s]
revision	2	Processing version of data	ontime5	23160.100178123	Sum of GTIs [s]
			ontime6	23156.959187746	Sum of GTIs [s]
			ontime7	23160.100178123	Sum of GTIs [s]
			l1events	1013897	Number of level 1 events

2.1.4 Events

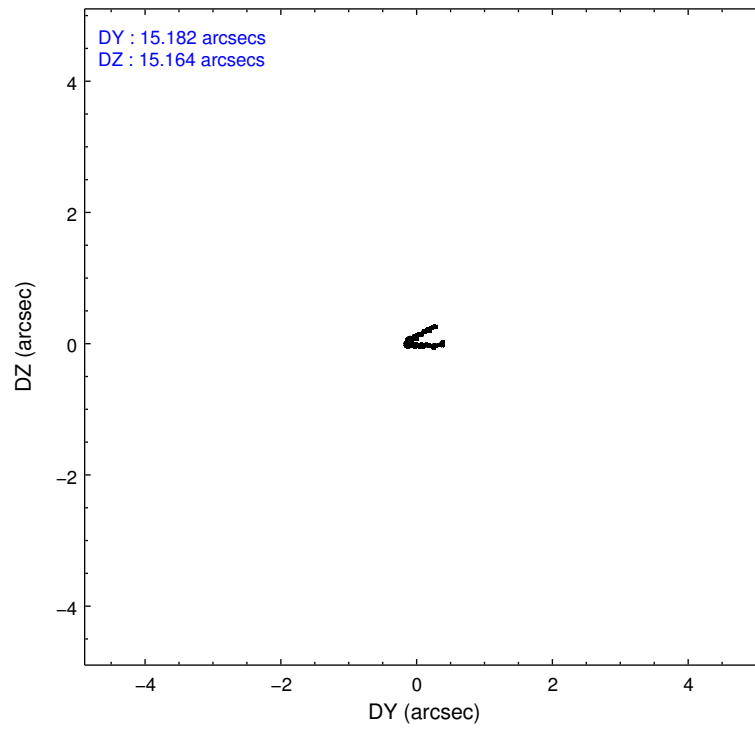
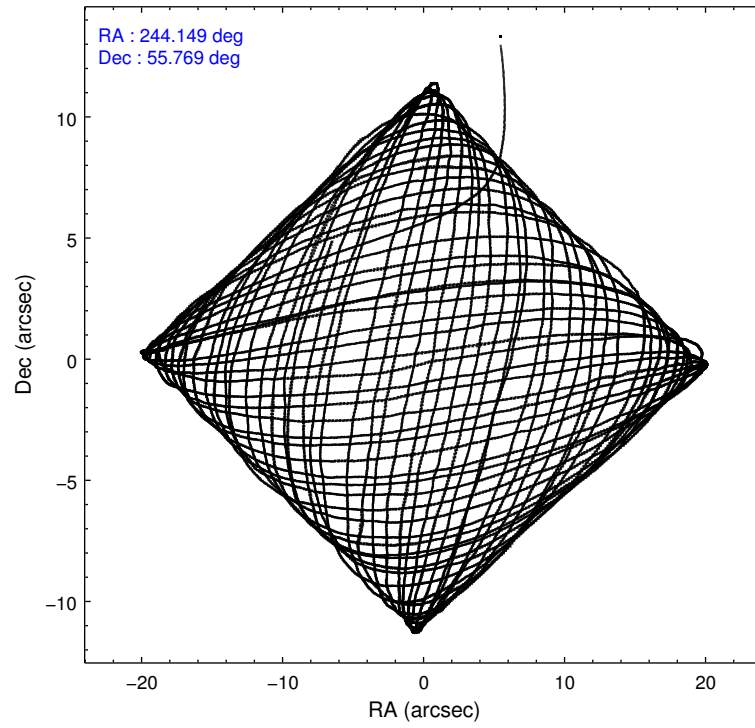
	ccd 2	ccd 3	ccd 5	ccd 6	ccd 7
level 1 events	176160	171353	268650	181115	216619
rejected events	157731	153761	135765	160955	119042
rejected %	89%	89%	50%	88%	54%

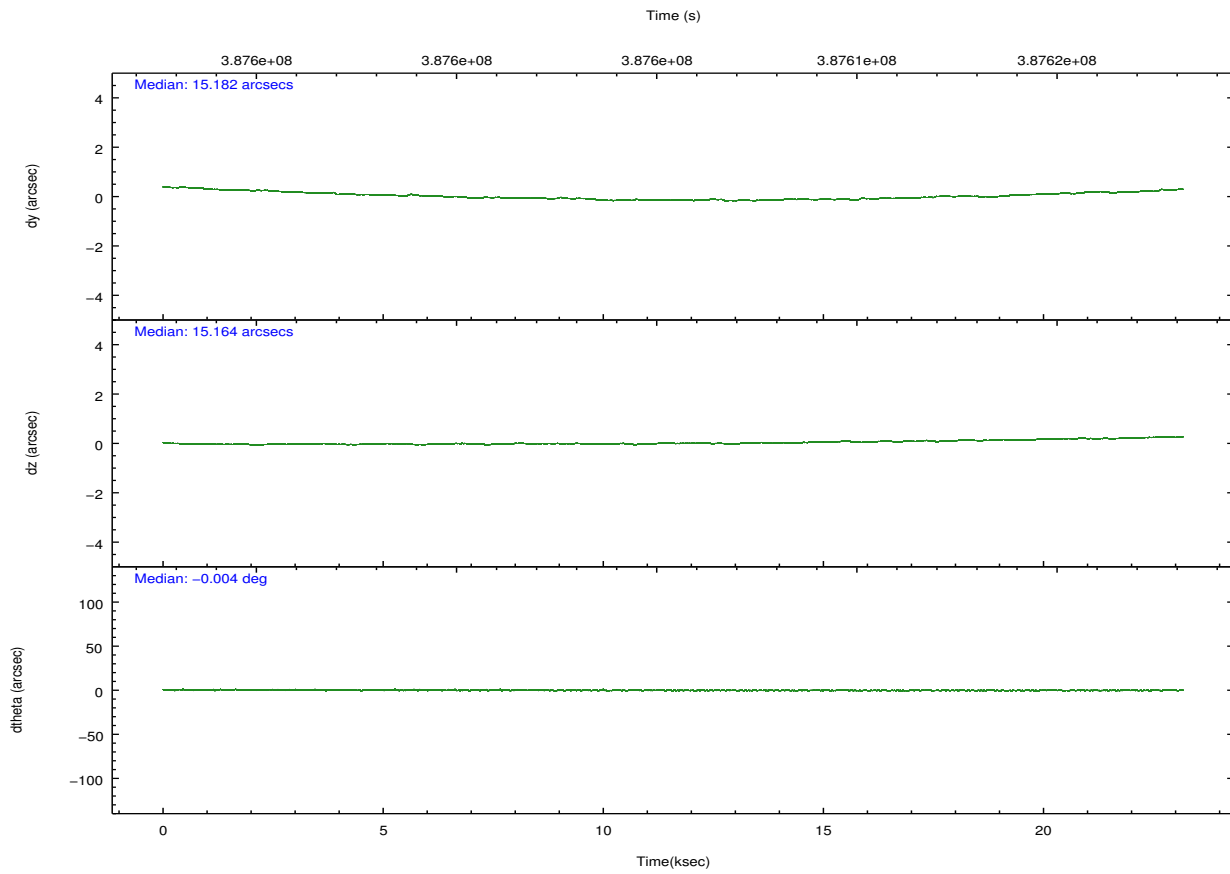
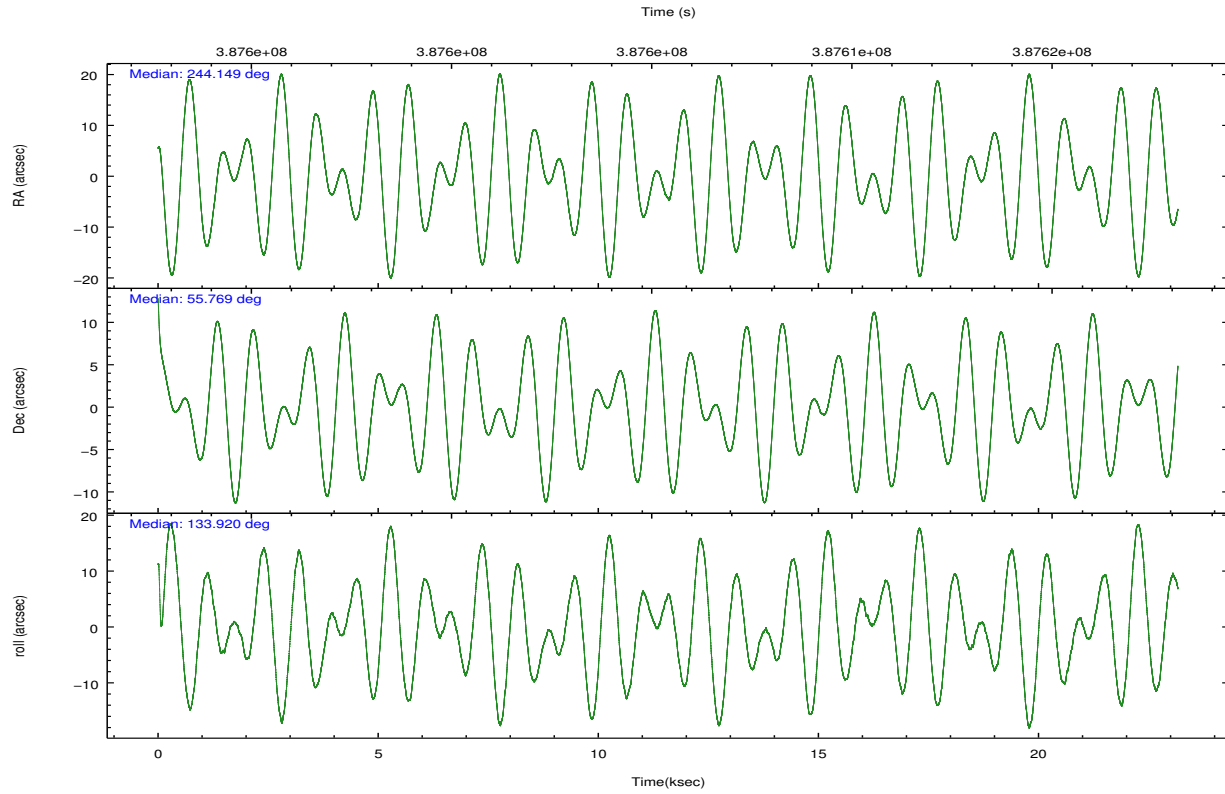
	ccd 2	ccd 3	ccd 5	ccd 6	ccd 7
grade 0 events	6683	6255	14431	7152	9649
	3%	3%	5%	3%	4%
grade 1 events	98	84	840	103	296
	0%	0%	0%	0%	0%
grade 2 events	4519	3836	40358	4450	20335
	2%	2%	15%	2%	9%
grade 3 events	1895	1953	5214	2121	8655
	1%	1%	1%	1%	3%
grade 4 events	2003	1997	5063	2161	8577
	1%	1%	1%	1%	3%
grade 5 events	6501	7748	20811	8003	22071
	3%	4%	7%	4%	10%
grade 6 events	3454	3657	68669	4393	51009
	1%	2%	25%	2%	23%
grade 7 events	151007	145823	113264	152732	96027
	85%	85%	42%	84%	44%

2.2 Compared Parameters

Parameter	Planned	Actual	Parameter	Planned	Actual
Instrument	ACIS	ACIS	Obspar format version number	7	7
Detector	ACIS-23567	ACIS-23567	Obspar file type	PREDICTED	ACTUAL
Grating	NONE	NONE	Obspar update status	NONE	UPDATED
Data mode	VFAINT	VFAINT	Number of optional ACIS chips dropped	0	0
Observation mode	POINTING	POINTING	On-chip summing requested	N	N
[deg] Pointing RA	244.195478	244.1485708353881	Subarray requested	NONE	NONE
[deg] Pointing Dec	55.762232	55.76945655821419	Alternating exposures requested	N	N
[deg] Pointing Roll	133.730659	133.9260751734217	[s] Primary exposure time	0.000000	3.1
[mm] SIM focus pos	-0.684267	-0.6828225247311905			
[mm] SIM defocus	0	0.001444936568705701			
[mm] SIM translation stage pos	-190.132523	-190.1400660498719			
[mm] SIM translation stage offset	0	0.00754346686406393			
[s] Observation start time (MET)	387593991.184000	387592929.513			
Observation start date	2010-04-14T00:58:45	2010-04-14T00:42:09			
[s] Observation end time (MET)	387616991.184000	387617732.46426			
Observation end date	2010-04-14T07:22:05	2010-04-14T07:35:32			
Read mode	TIMED	TIMED			

2.3 Aspect



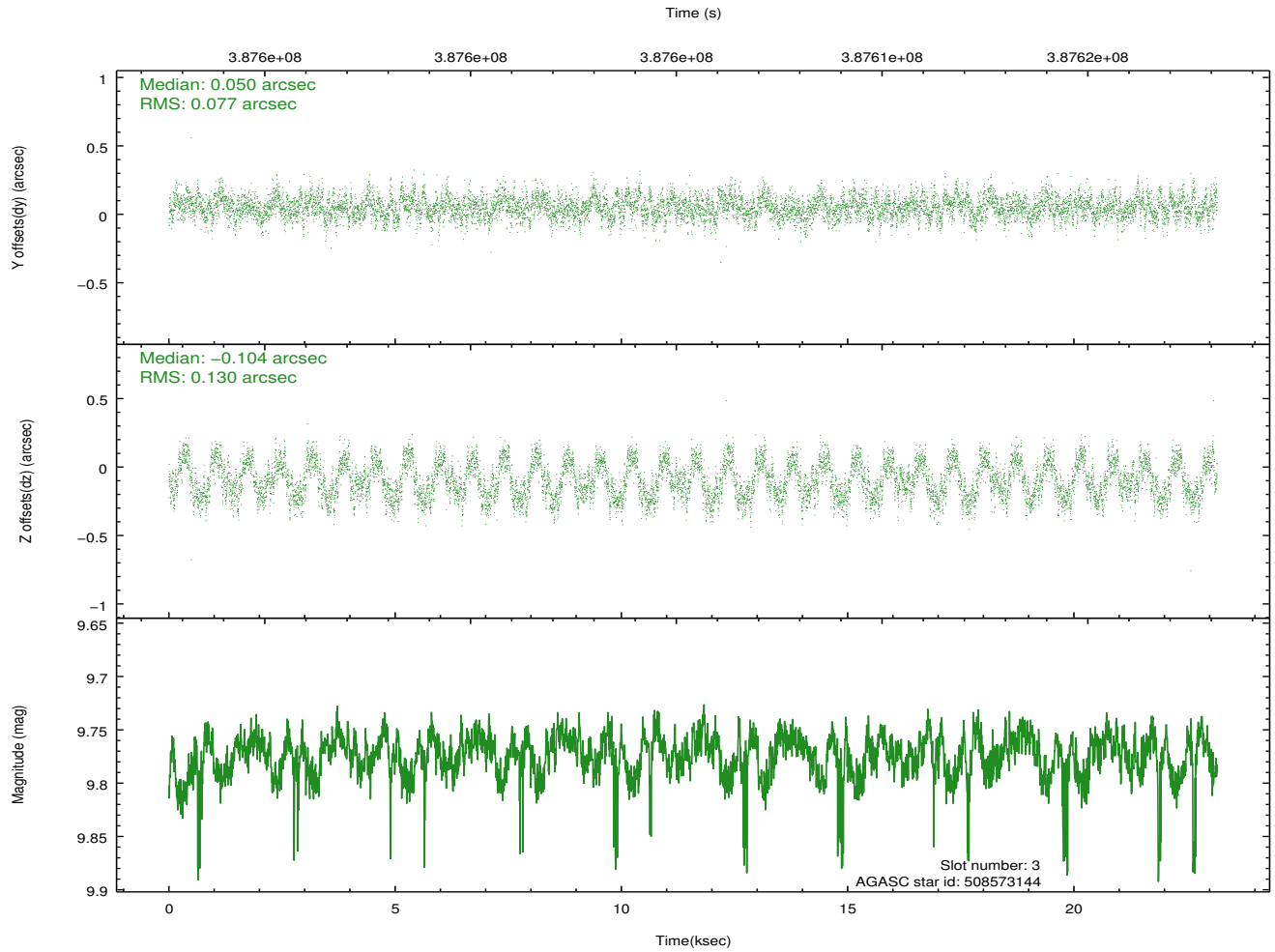
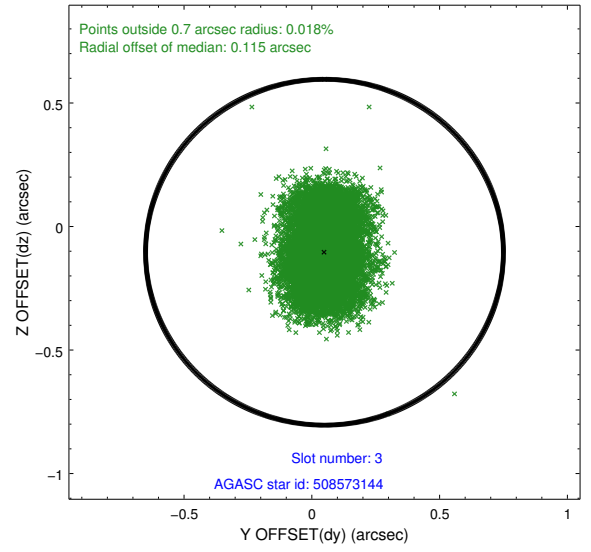
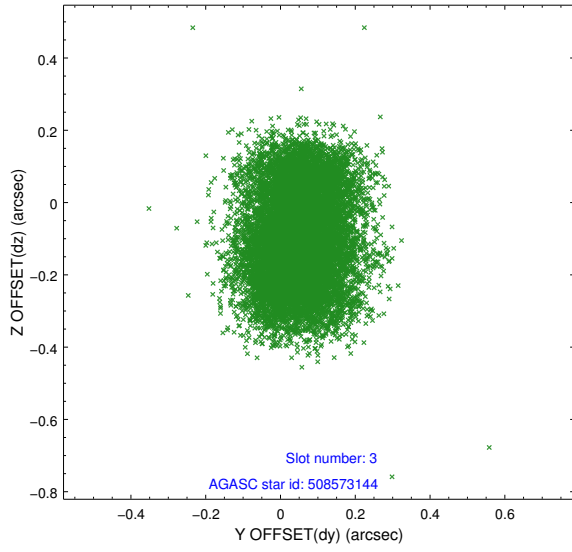


Slot Statistics

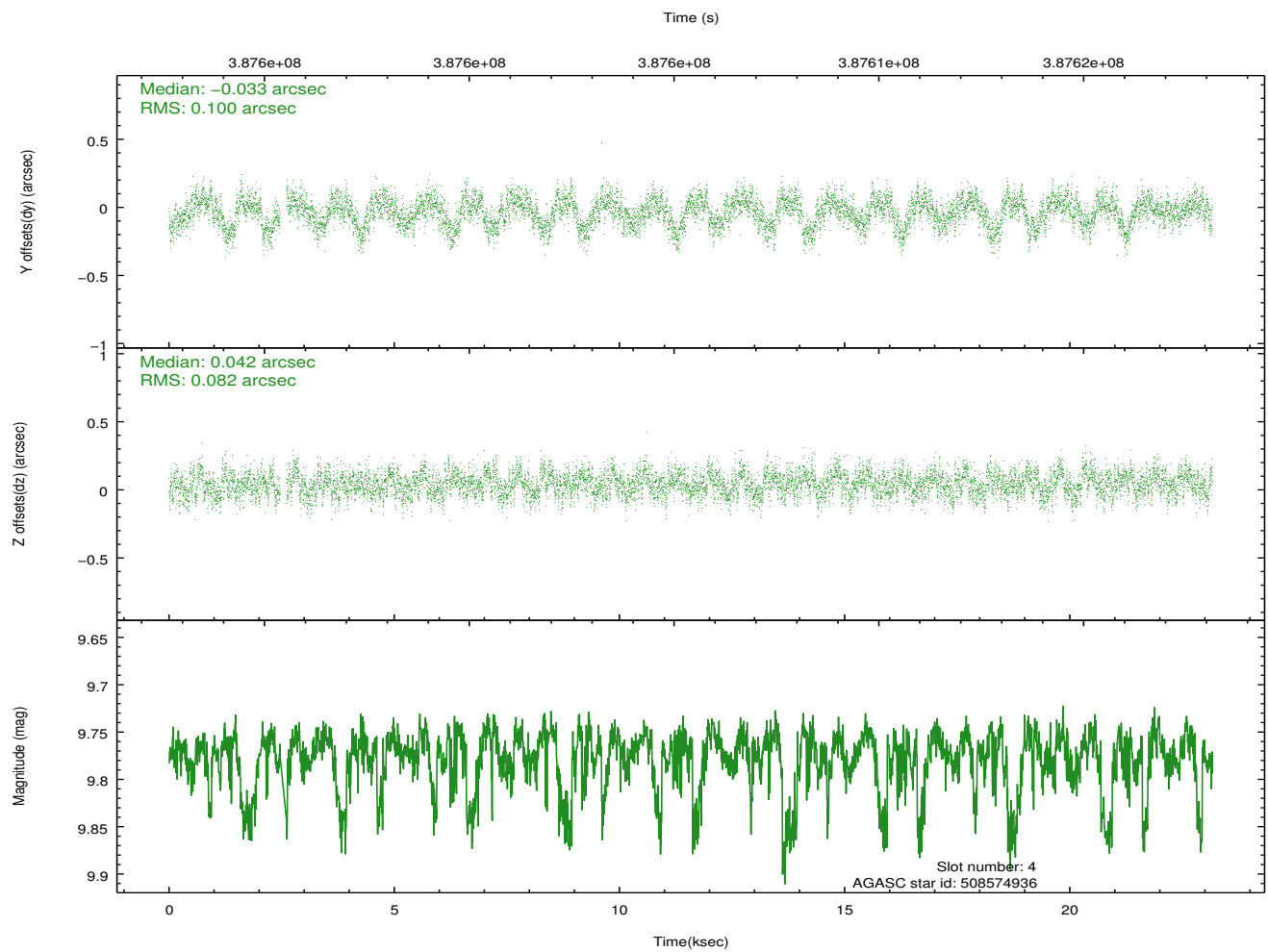
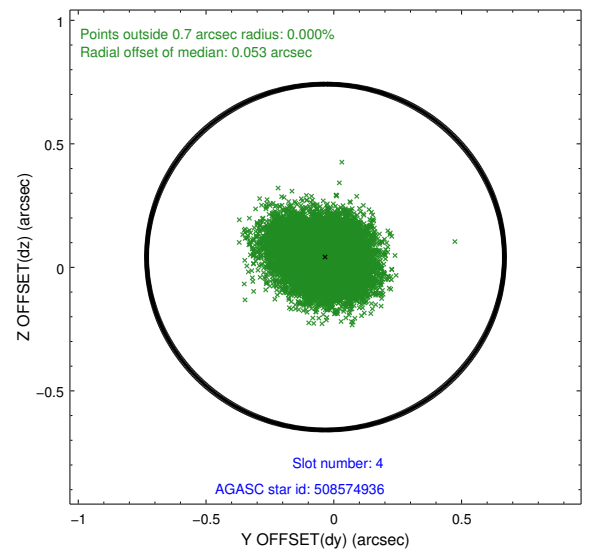
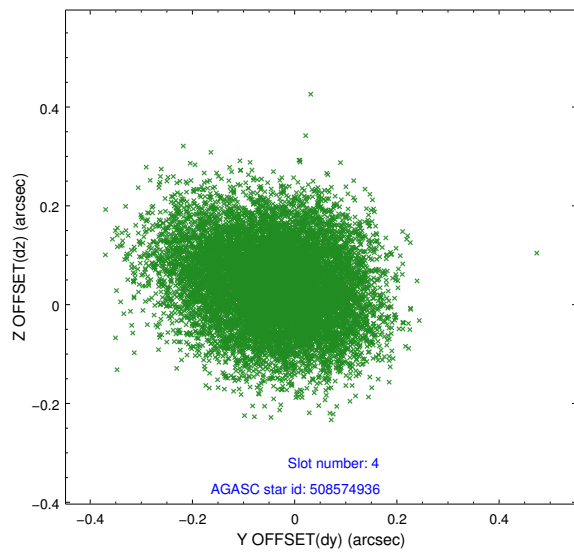
slot	status	id	mag	n_pts	med_dy	med_dz	dr1	dr2	ra	dec	mean_y	mean_z
0	FID	ACIS-S-2	6.94	5649	-0.100	-0.018	0.007	0.013	0.000000	0.000000	-768.27	-1736.62
1	FID	ACIS-S-4	7.02	5650	0.194	0.053	0.007	0.013	0.000000	0.000000	2145.22	171.82
2	FID	ACIS-S-5	7.05	5650	-0.124	-0.026	0.008	0.013	0.000000	0.000000	-1820.97	165.54
3	GUIDE	508573144	9.77	11268	0.050	-0.104	0.165	0.251	243.478155	55.567836	508.98	1534.60
4	GUIDE	508574936	9.77	11208	-0.033	0.042	0.140	0.220	243.430611	55.657634	808.24	1377.34
5	GUIDE	508699760	8.58	11297	-0.125	0.028	0.090	0.142	244.564277	56.133635	456.47	-1459.77
6	GUIDE	508707432	9.05	11295	0.076	0.143	0.111	0.175	245.148479	56.043462	-583.02	-2093.42
7	GUIDE	508576792	9.04	11289	0.032	-0.117	0.085	0.132	244.272390	55.269176	-1395.31	1115.53

2.4 Star Slots

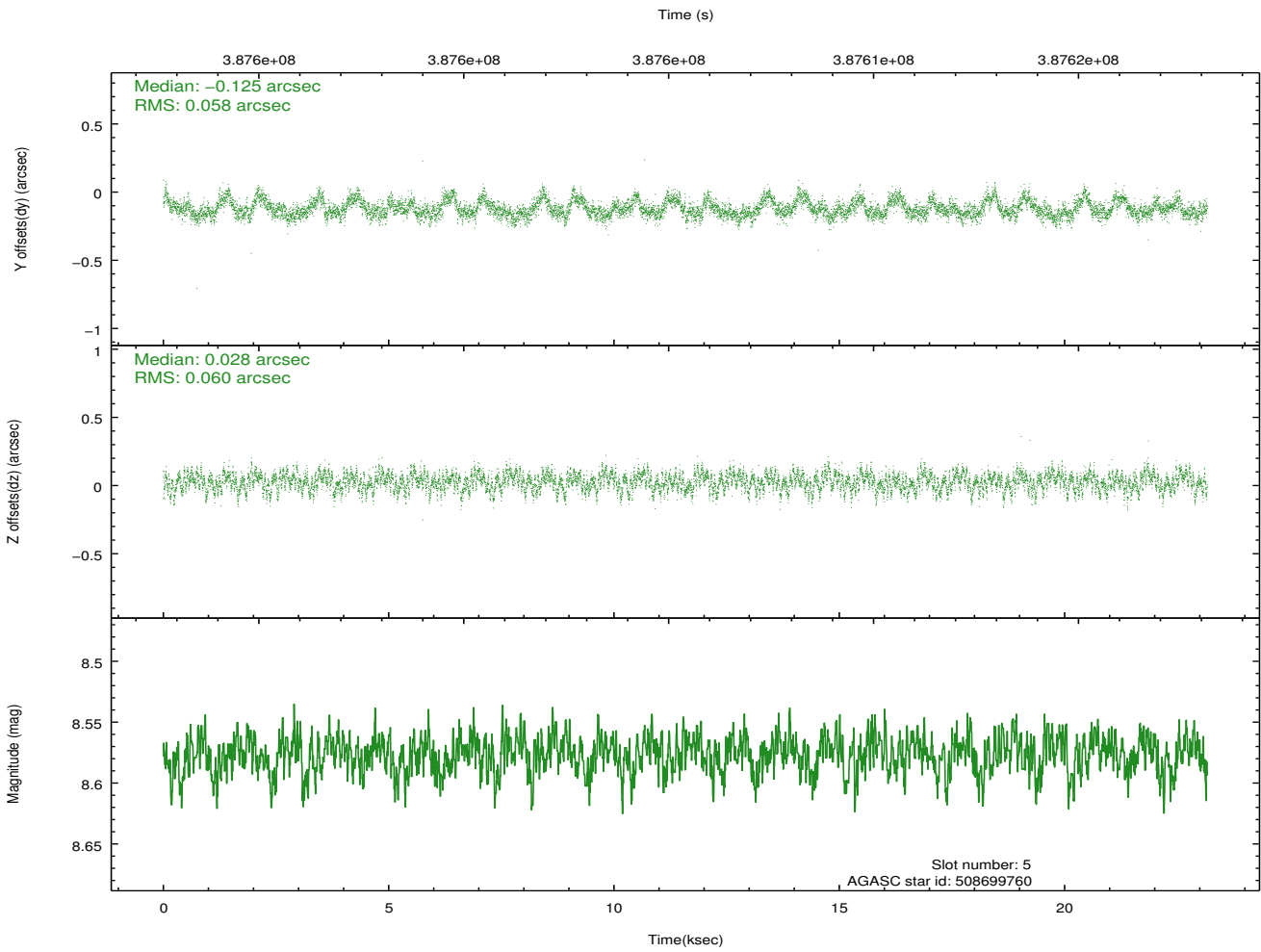
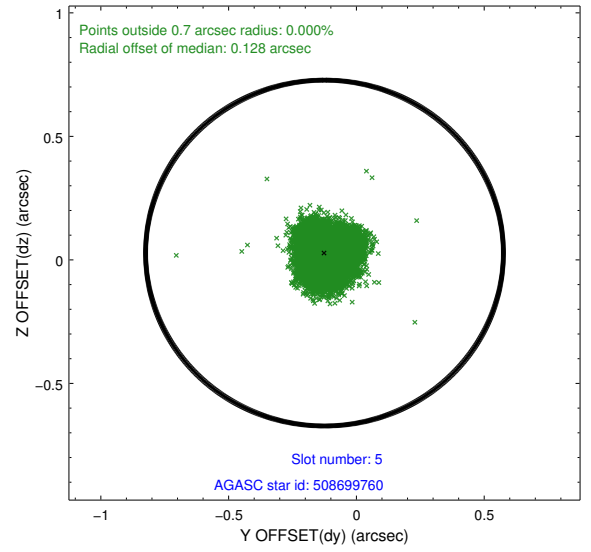
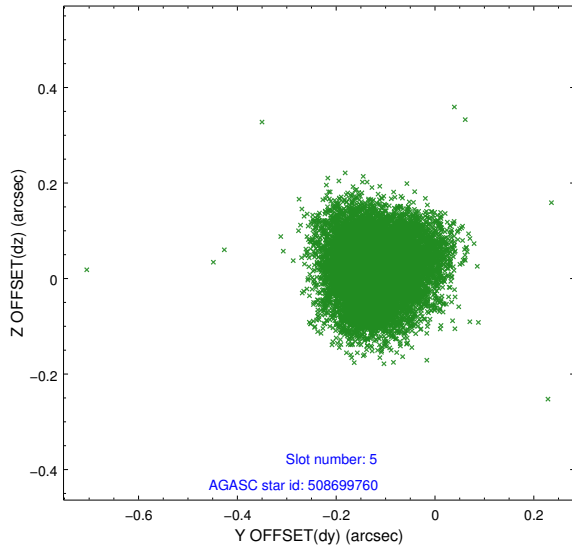
2.4.1 Slot 3



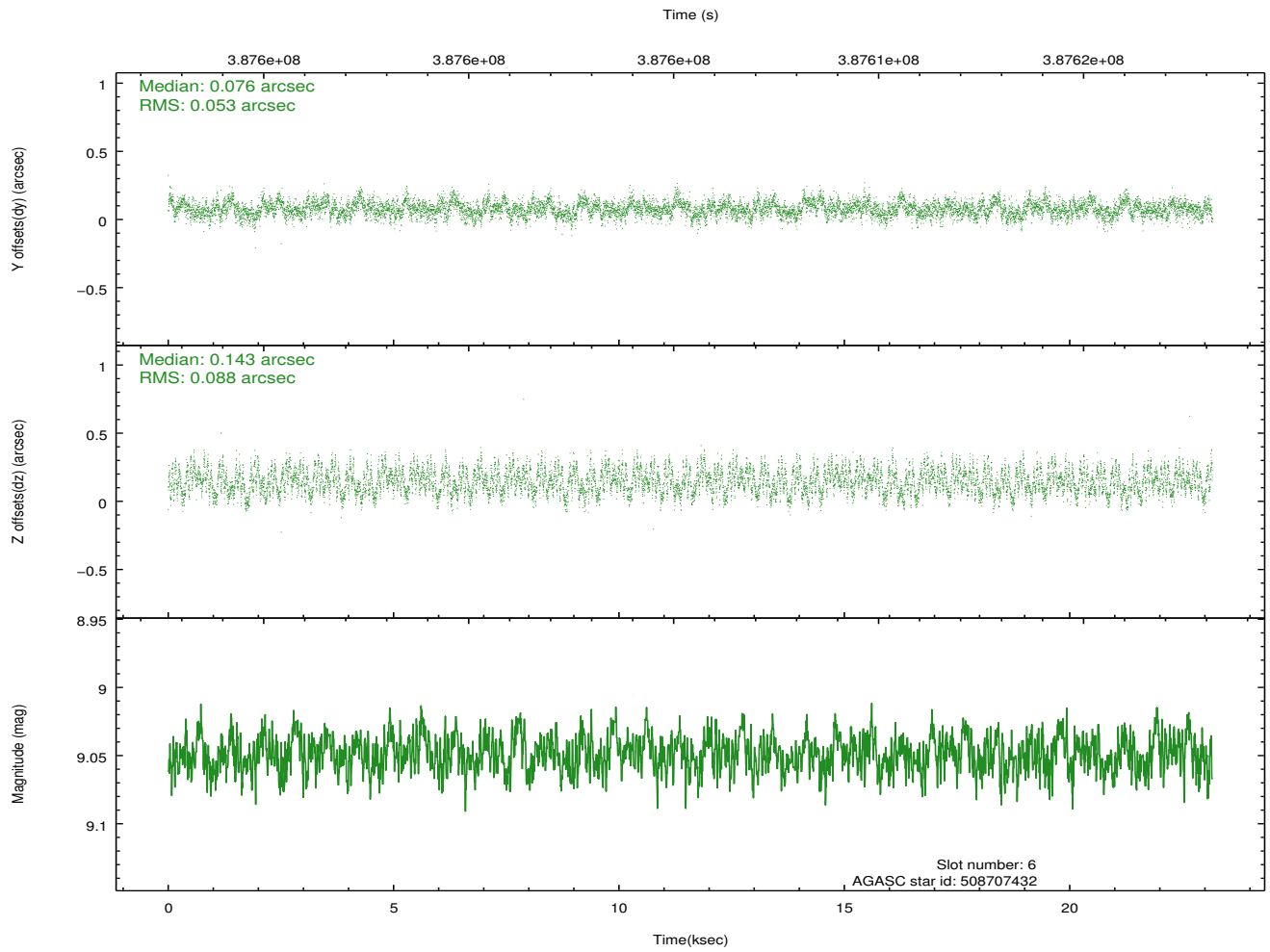
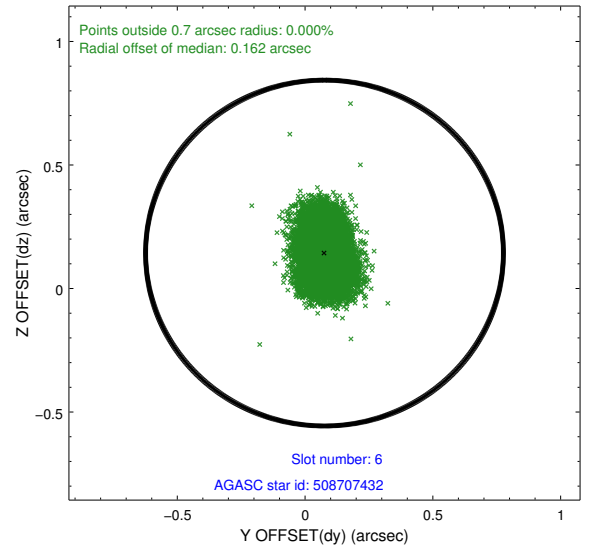
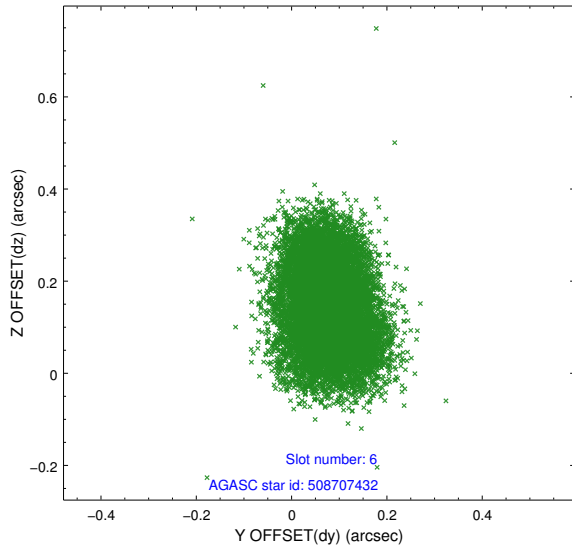
2.4.2 Slot 4



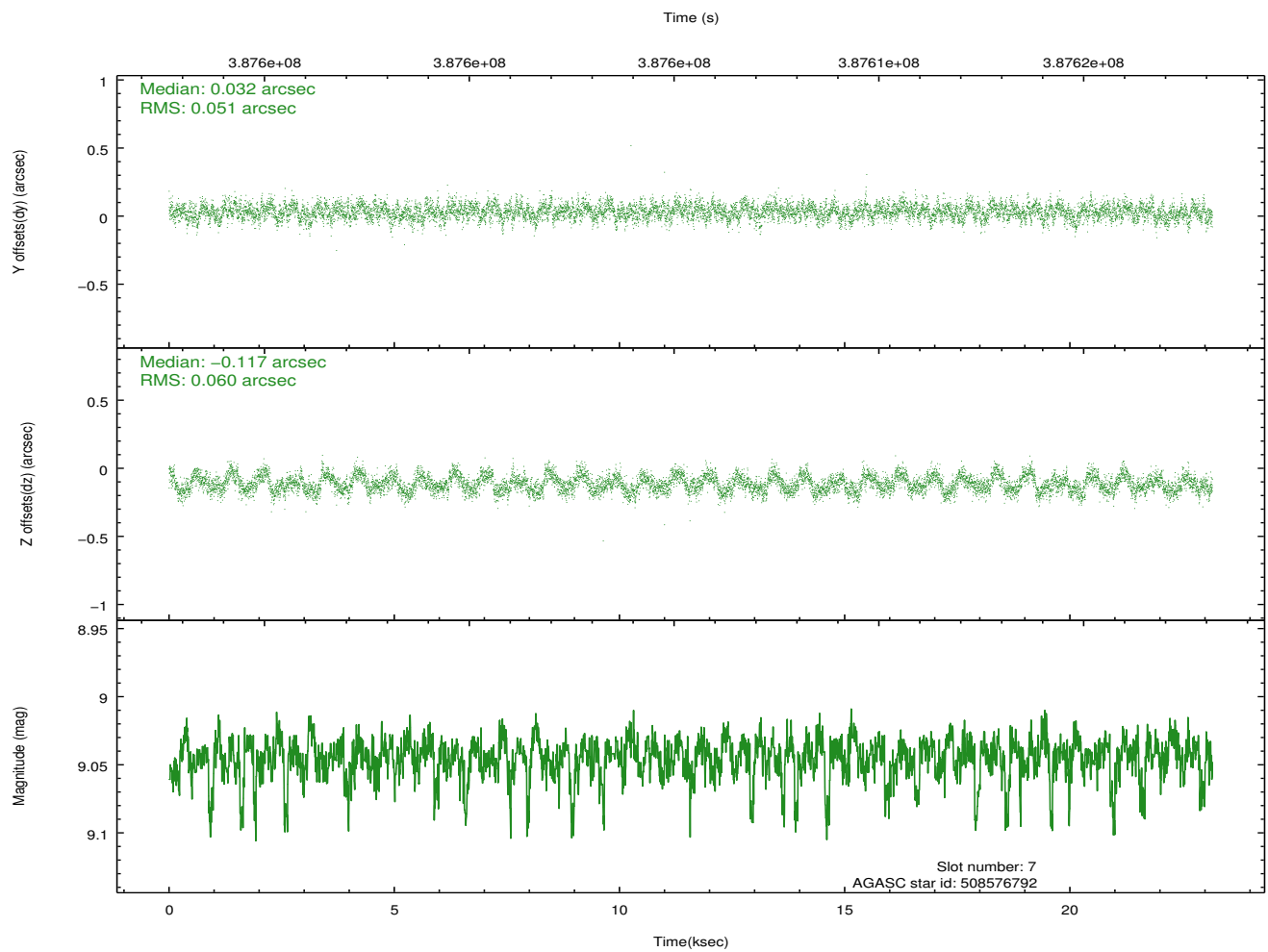
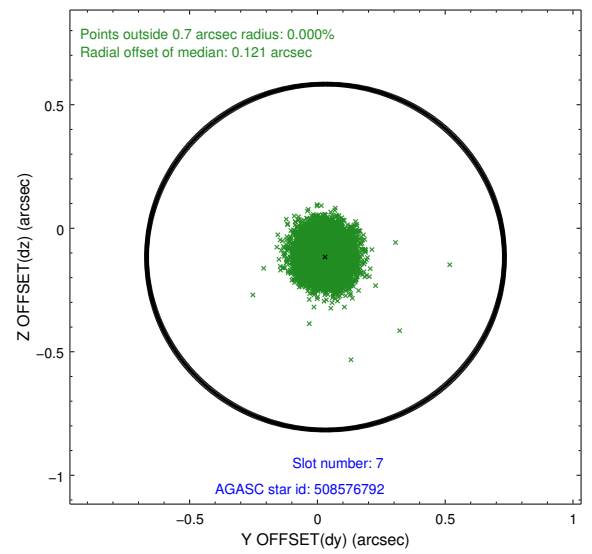
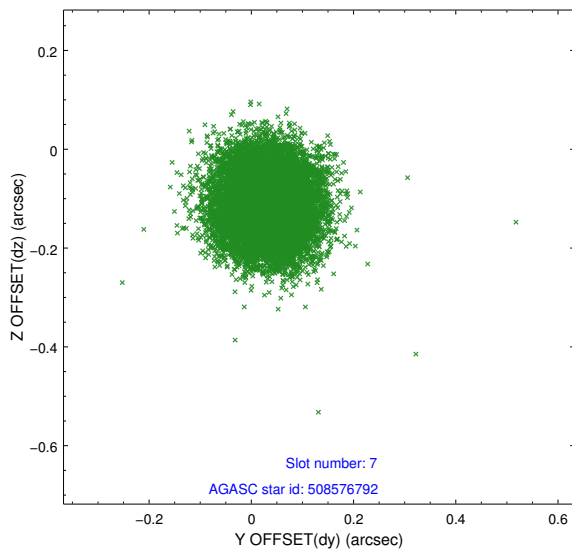
2.4.3 Slot 5



2.4.4 Slot 6

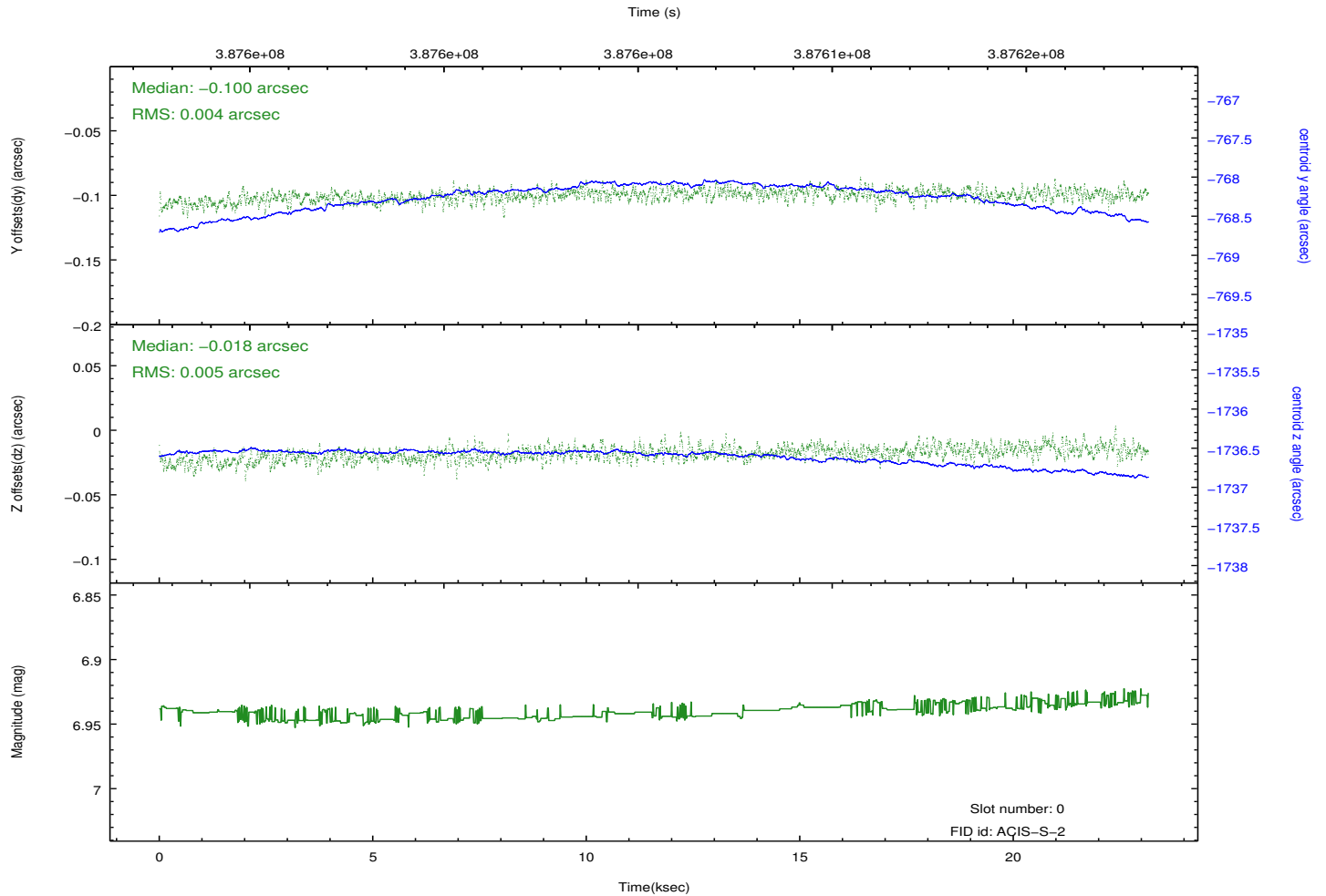
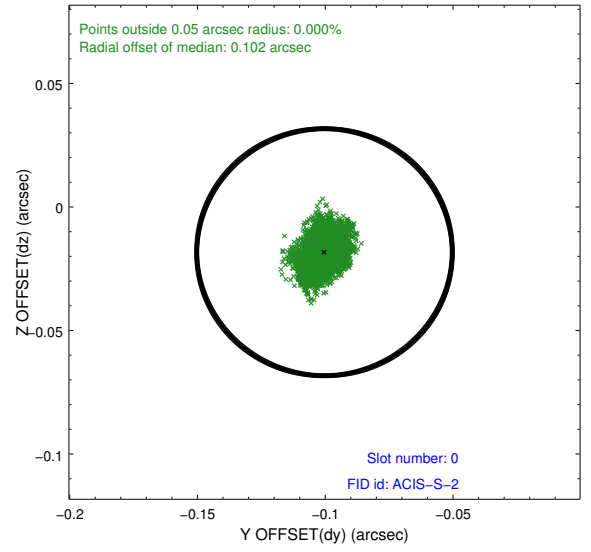
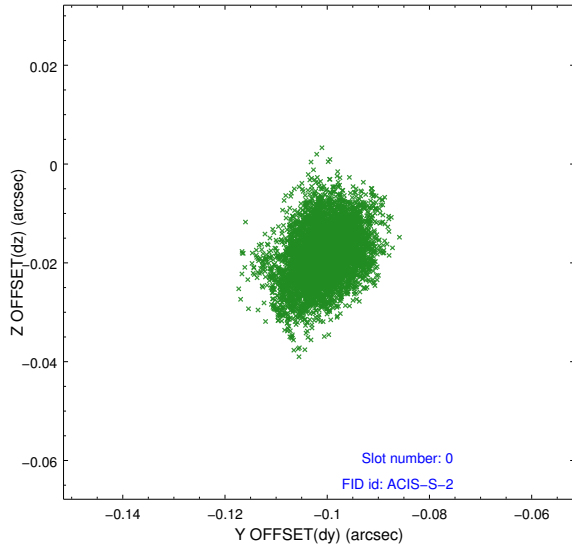


2.4.5 Slot 7

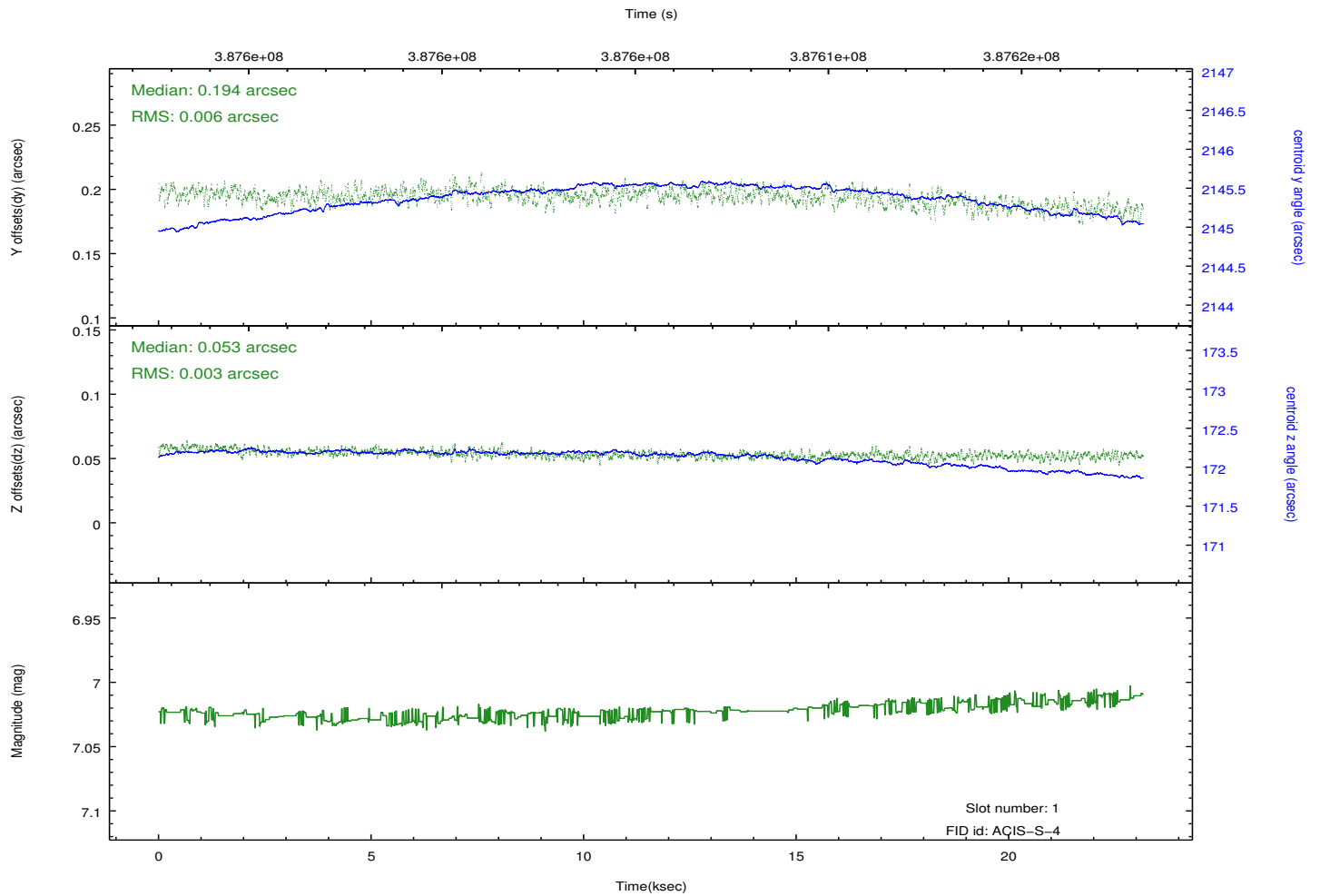
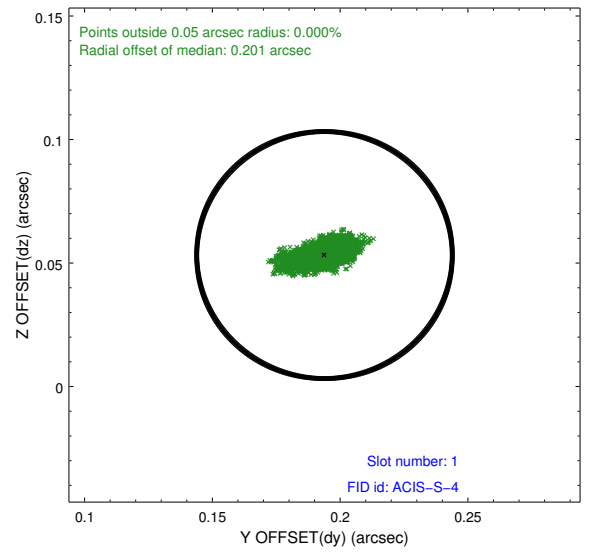
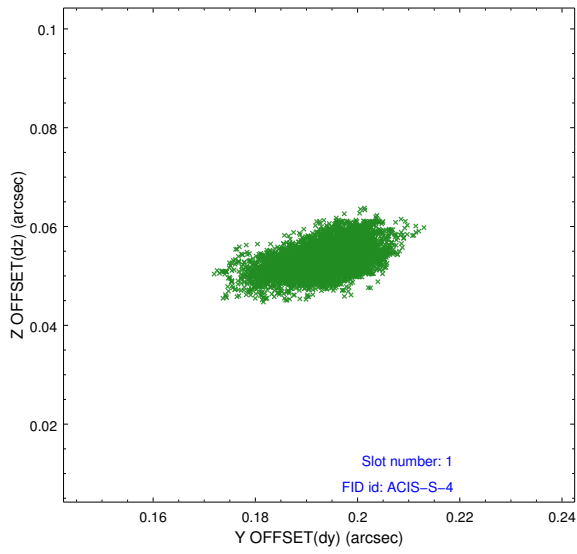


2.5 FID Slots

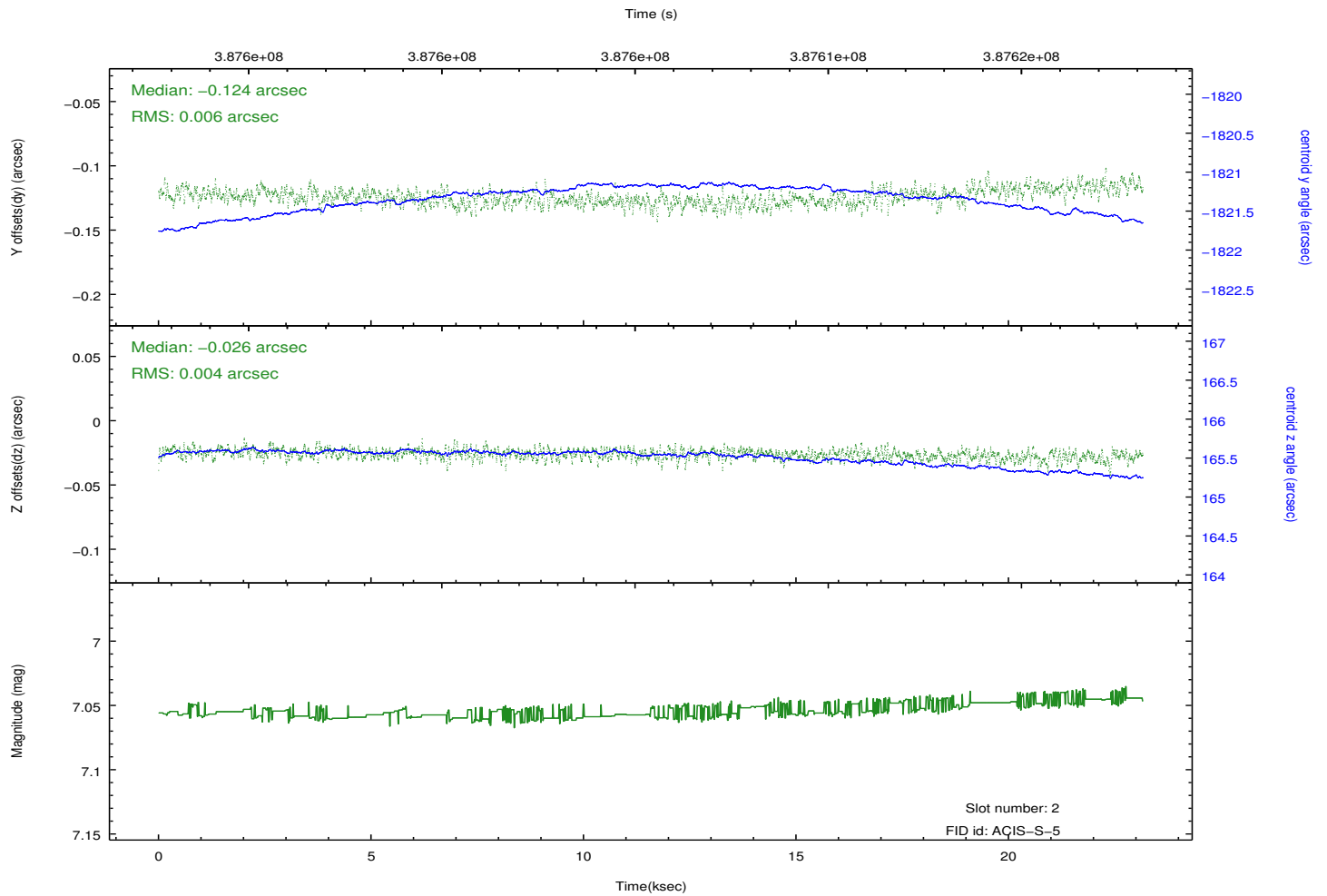
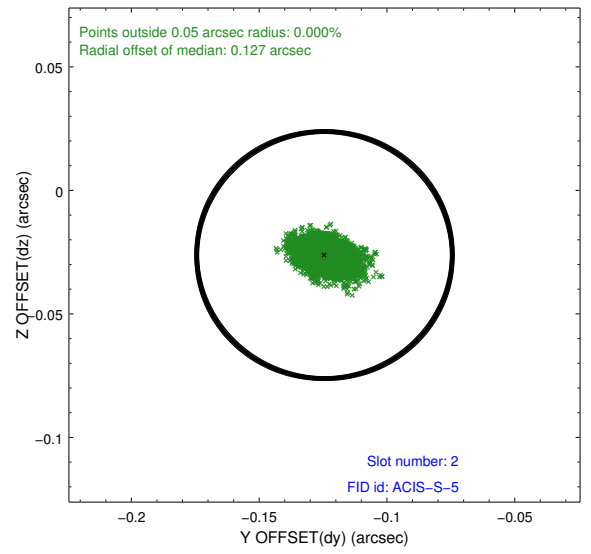
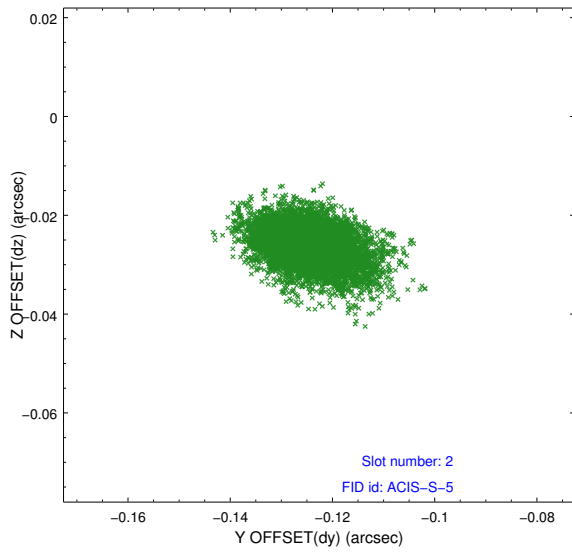
2.5.1 Slot 0



2.5.2 Slot 1



2.5.3 Slot 2



A Summary

A.1 Status

V&V Scientist	Jen Lauer
V&V Date (YYYY-MM-DD)	2012.06.29
V&V Edition	1
V&V Disposition and Status	OK
V&V Charge Time	23.160100178123

A.2 Comments