

V&V Reference Report

L2 ASCDS Version : 8.4.5

Observation 12230 - L2 Version 2
Chandra X-Ray Center

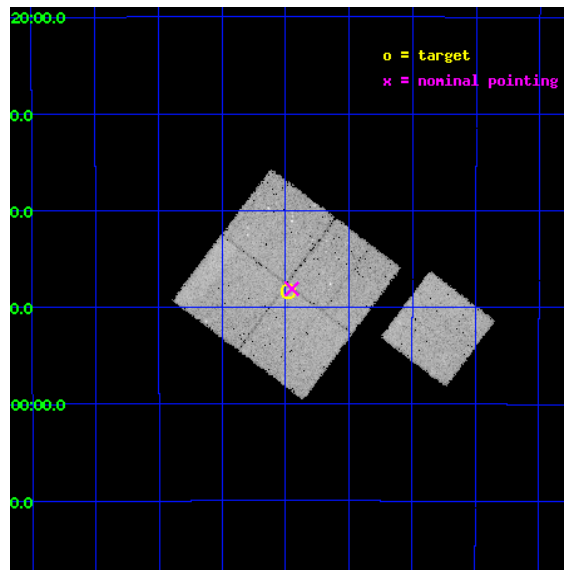
L2 Processing Date : Jun 30 2012

Contents

1	Front	2
2	OBI	3
2.1	OBI	3
2.1.1	Images	3
2.1.2	Bias	3
2.1.3	Parameters	4
2.1.4	Events	4
2.2	Compared Parameters	5
2.3	Aspect	6
2.4	Star Slots	9
2.4.1	Slot 3	9
2.4.2	Slot 4	10
2.4.3	Slot 5	11
2.4.4	Slot 6	12
2.4.5	Slot 7	13
2.5	FID Slots	14
2.5.1	Slot 0	14
2.5.2	Slot 1	15
2.5.3	Slot 2	16
A	Summary	17
A.1	Status	17
A.2	Comments	17

1 Front

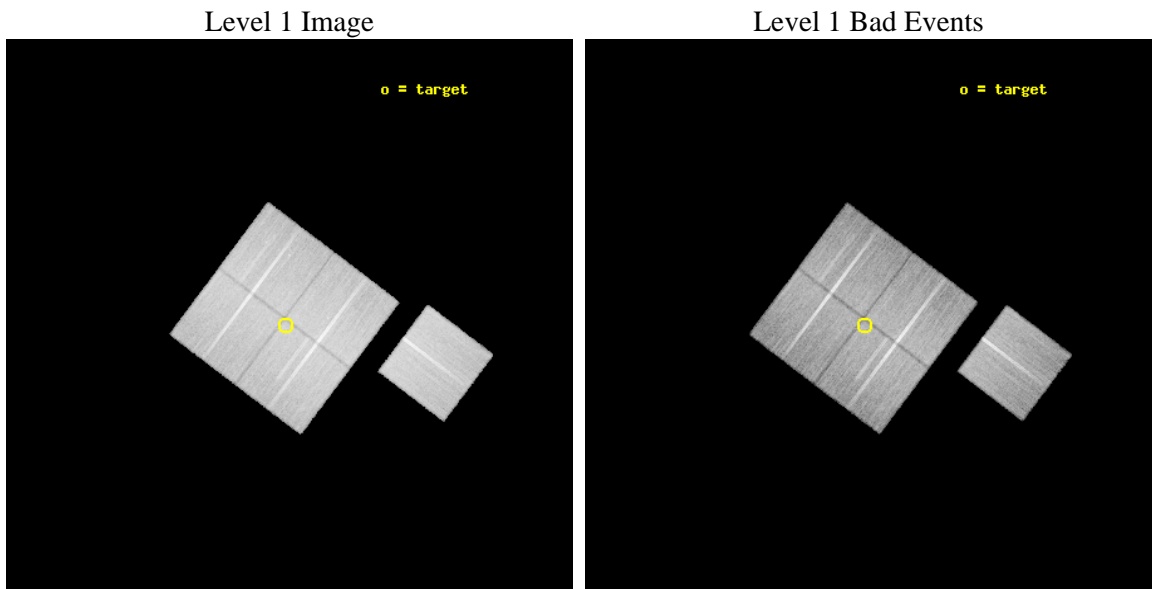
seq_num	900939	Sequence number
obs_id	12230	Observation id
title	The Chandra Deep Field-South Survey: An Ultradeep Chandra Legacy	P
observer	Dr. Harvey Tananbaum	Principal investigator
object	Chandra Deep Field-South	Source name
dtcycle	0	
cycle	P	events from which exps? Prim/Second/Both
ra_targ	53.12	Observer's specified target RA [deg]
dec_targ	-27.806389	Observer's specified target Dec [deg]
ra_nom	53.112566757864	Nominal RA [deg]
dec_nom	-27.801667191135	Nominal Dec [deg]
roll_nom	127.00523215191	Nominal Roll [deg]
revision	2	Processing version of data
ontime	34254.918332756	Sum of GTIs [s]
livetime	33807.352606634	Livetime [s]
ontime0	34258.059303105	Sum of GTIs [s]
ontime1	34258.059273243	Sum of GTIs [s]
ontime2	34254.918322742	Sum of GTIs [s]
ontime3	34254.918332756	Sum of GTIs [s]
ontime6	34242.354501128	Sum of GTIs [s]
l2events	119124	Number of level 2 events



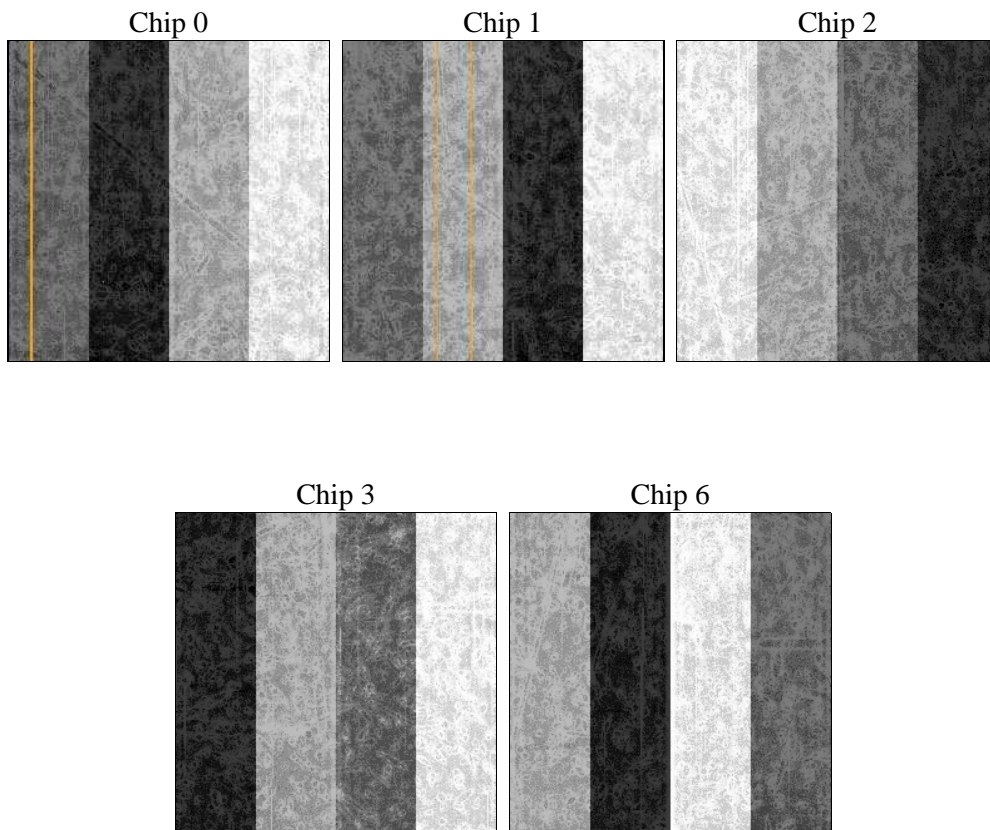
2 OBI

2.1 OBI

2.1.1 Images



2.1.2 Bias



2.1.3 Parameters

obi_num	0	Obi number	sched_exp_time	34210.223000	[s] Scheduled observation exposure time
ascdsver	8.4.5	Processing system revision	ontime	34254.918332756	Sum of GTIs [s]
caldbver	4.5.0	 	ontime0	34258.059303105	Sum of GTIs [s]
date	2012-06-30T01:46:19	Date and time of file creation	ontime1	34258.059273243	Sum of GTIs [s]
revision	2	Processing version of data	ontime2	34254.918322742	Sum of GTIs [s]
			ontime3	34254.918332756	Sum of GTIs [s]
			ontime6	34242.354501128	Sum of GTIs [s]
			l1events	1277184	Number of level 1 events

2.1.4 Events

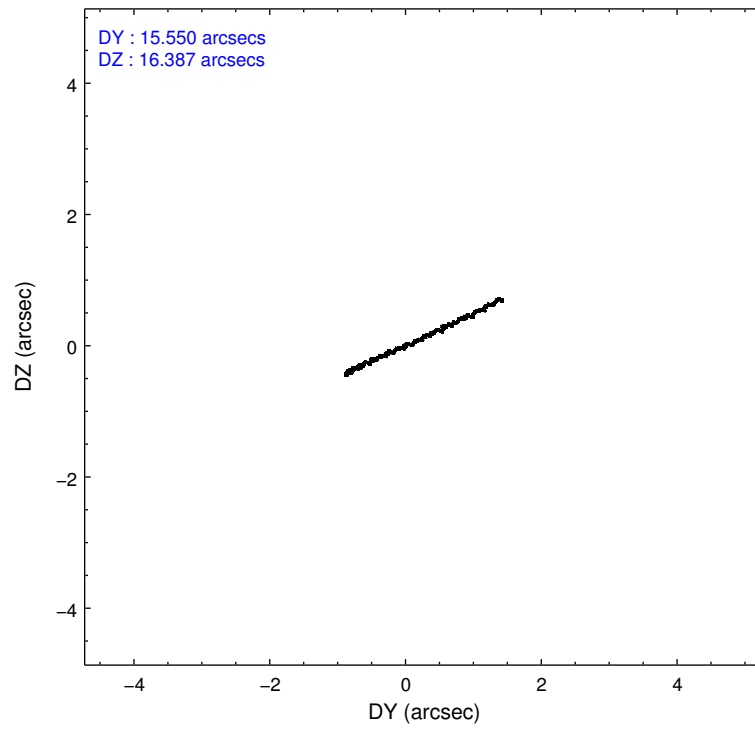
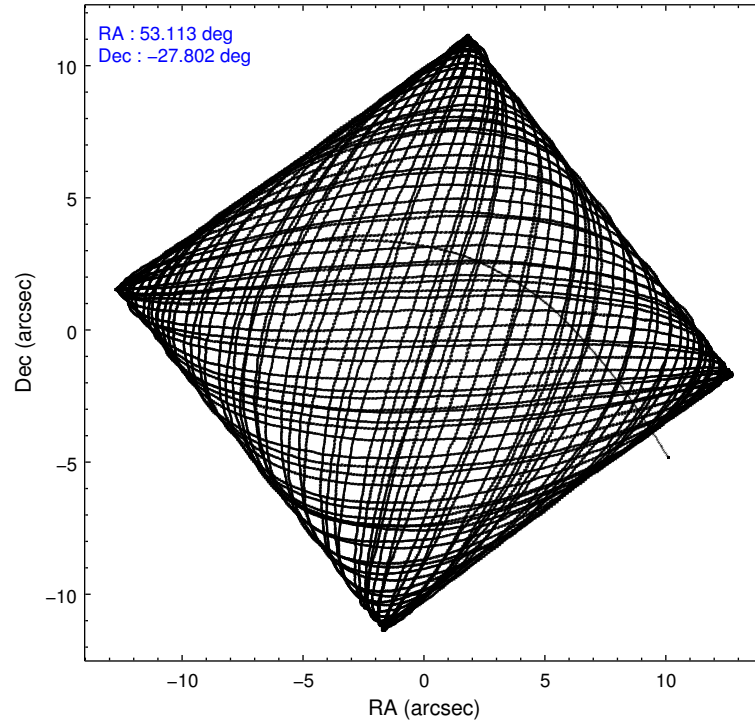
	ccd 0	ccd 1	ccd 2	ccd 3	ccd 6
level 1 events	243966	241656	269226	258282	264054
rejected events	215319	210374	241652	231928	235215
rejected %	88%	87%	89%	89%	89%

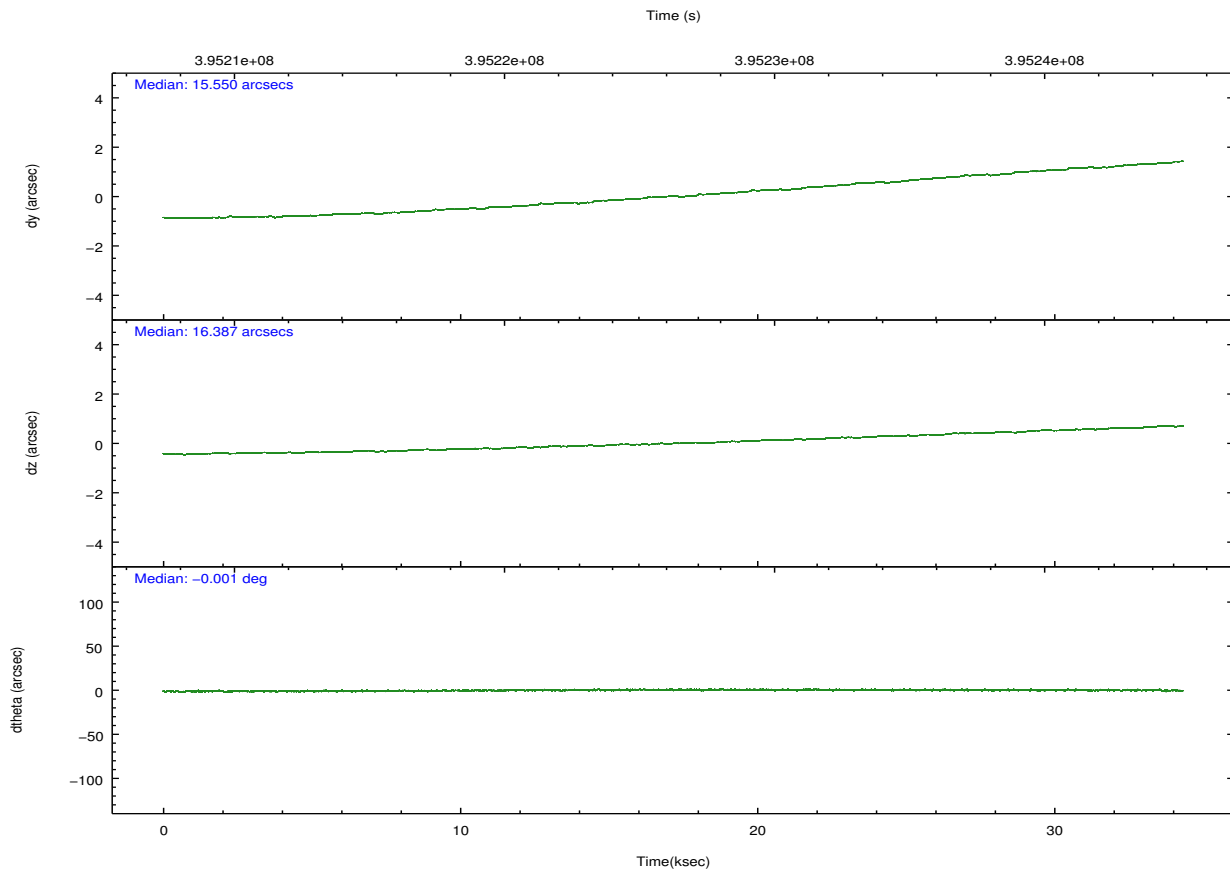
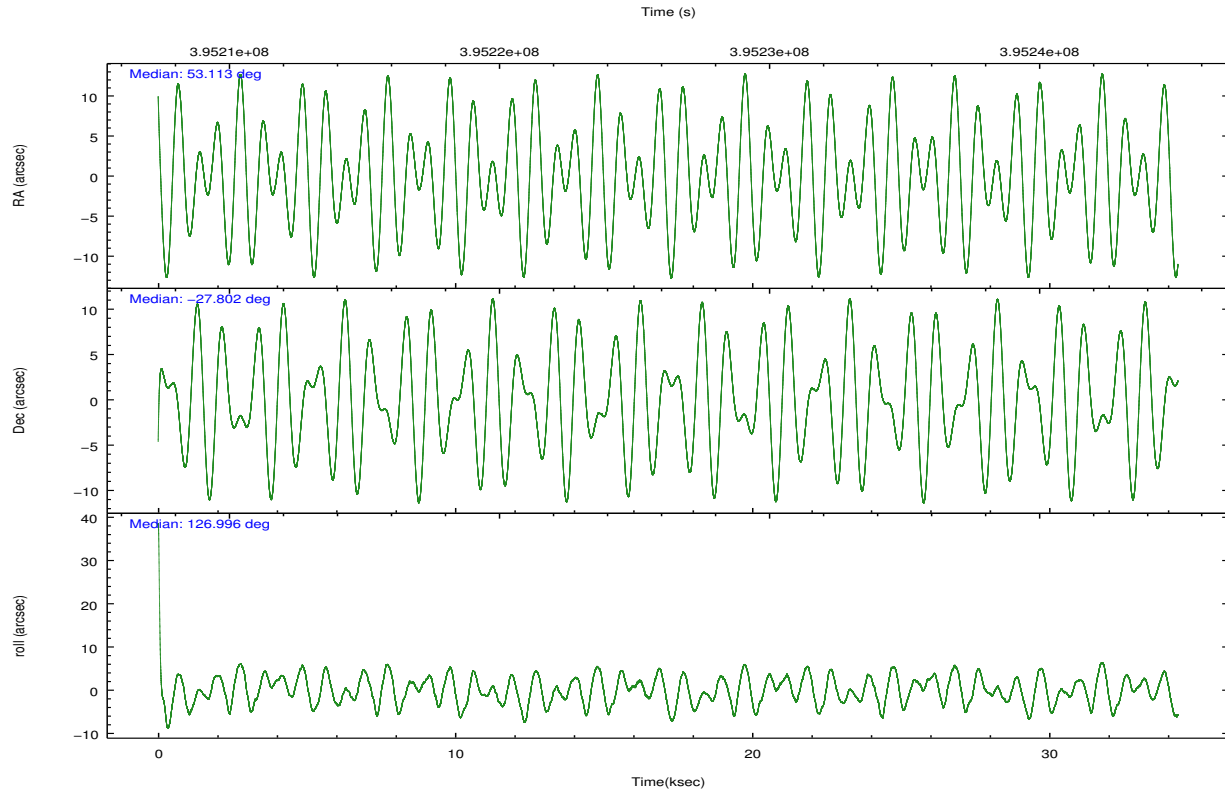
	ccd 0	ccd 1	ccd 2	ccd 3	ccd 6
grade 0 events	10043	11033	9809	9080	10152
	4%	4%	3%	3%	3%
grade 1 events	143	153	161	141	136
	0%	0%	0%	0%	0%
grade 2 events	7077	7389	6625	5910	6396
	2%	3%	2%	2%	2%
grade 3 events	3029	3133	2843	2988	3041
	1%	1%	1%	1%	1%
grade 4 events	2905	3145	3023	2769	2913
	1%	1%	1%	1%	1%
grade 5 events	10250	11125	9682	11738	11432
	4%	4%	3%	4%	4%
grade 6 events	5595	6584	5276	5612	6340
	2%	2%	1%	2%	2%
grade 7 events	204924	199094	231807	220044	223644
	83%	82%	86%	85%	84%

2.2 Compared Parameters

Parameter	Planned	Actual	Parameter	Planned	Actual
Instrument	ACIS	ACIS	Obspar format version number	7	7
Detector	ACIS-01236	ACIS-01236	Obspar file type	PREDICTED	ACTUAL
Grating	NONE	NONE	Obspar update status	NONE	UPDATED
Data mode	VFAINT	VFAINT	CCD I0 on	Y	Y
Observation mode	POINTING	POINTING	CCD I1 on	Y	Y
[deg] Pointing RA	53.141247	53.11256675786395	CCD I2 on	Y	Y
[deg] Pointing Dec	-27.812314	-27.80166719113471	CCD I3 on	Y	Y
[deg] Pointing Roll	126.809910	127.0052321519084	CCD S0 on	N	N
[mm] SIM focus pos	-0.782348	-0.7809083437167272	CCD S1 on	N	N
[mm] SIM defocus	0	0.001439871863259334	CCD S2 on	O1	Y
[mm] SIM translation stage pos	-233.592463	-233.5874344608287	CCD S3 on	N	N
[mm] SIM translation stage offset	0	-0.005018542100998502	CCD S4 on	N	N
[s] Observation start time (MET)	395209191.184000	395207501.15093	CCD S5 on	N	N
Observation start date	2010-07-11T04:18:45	2010-07-11T03:51:41	Number of optional ACIS chips dropped	0	0
[s] Observation end time (MET)	395243401.184000	395243638.04027	On-chip summing requested	N	N
Observation end date	2010-07-11T13:48:55	2010-07-11T13:53:58	Subarray requested	NONE	NONE
Read mode	TIMED	TIMED	Alternating exposures requested	N	N
			[s] Primary exposure time	0.000000	3.1

2.3 Aspect



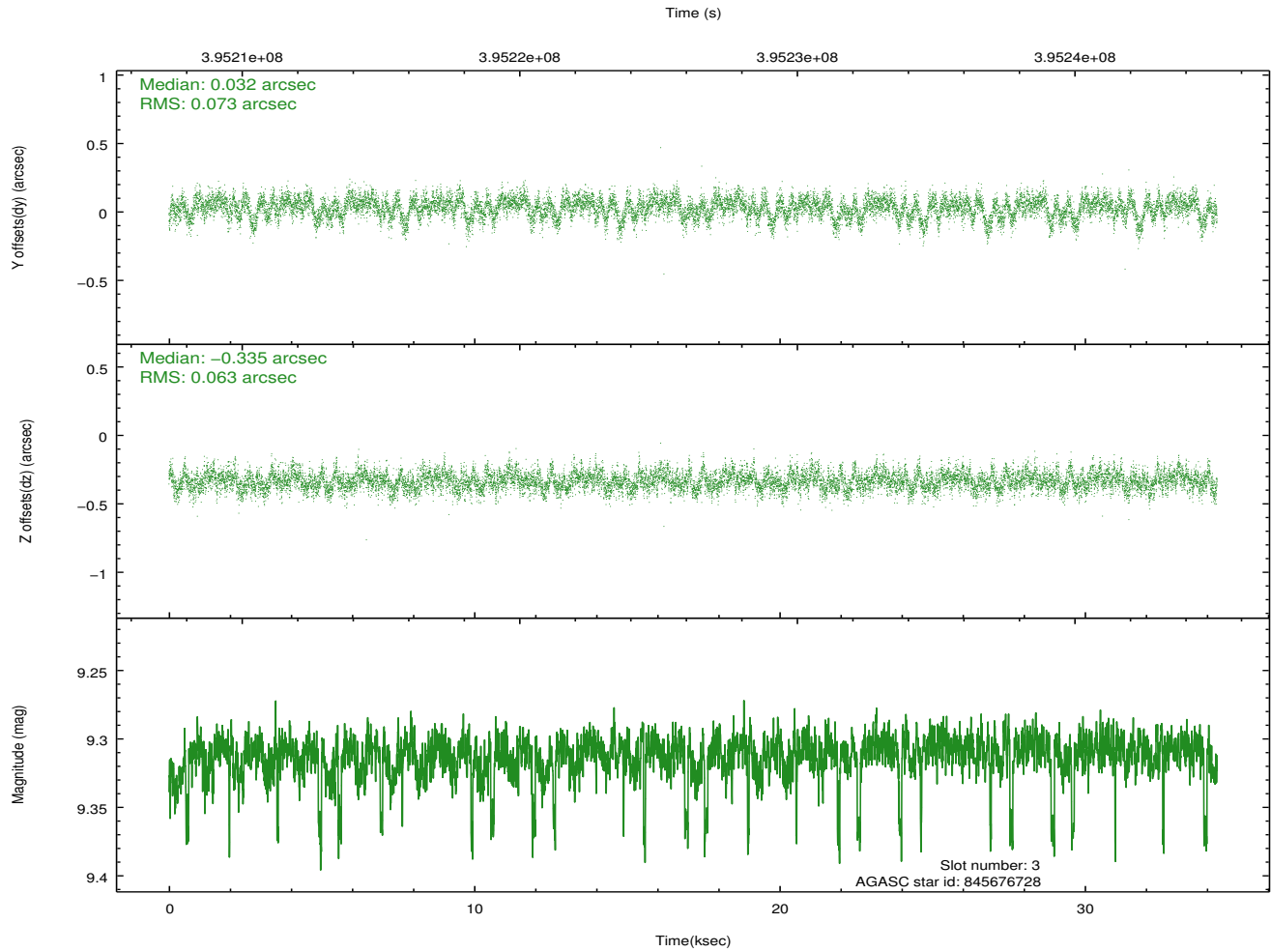
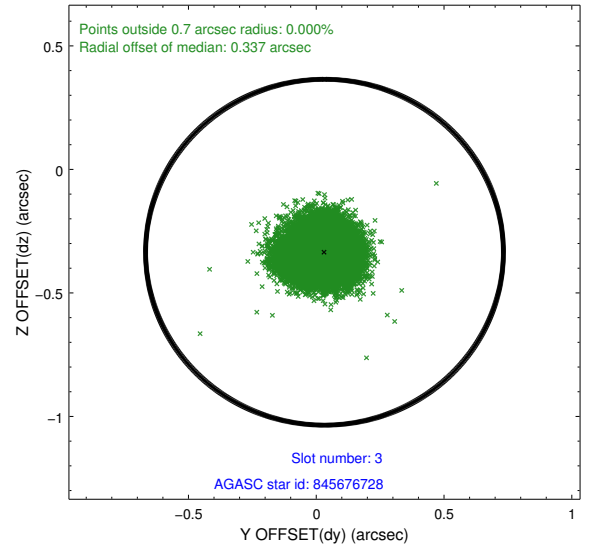
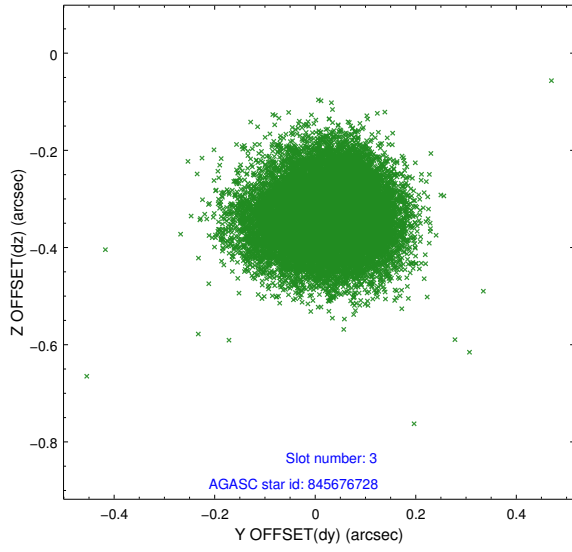


Slot Statistics

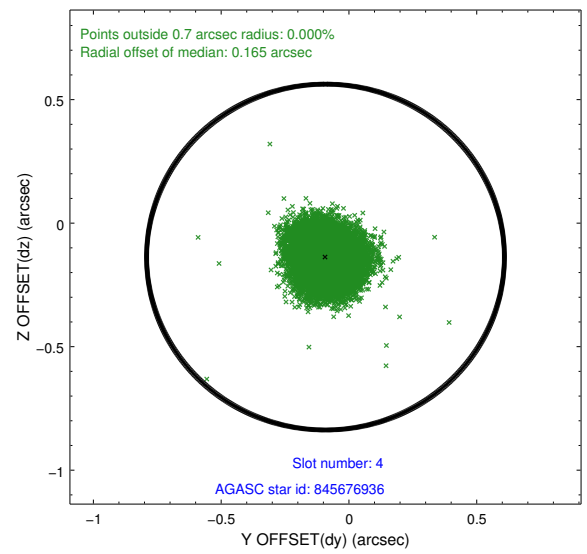
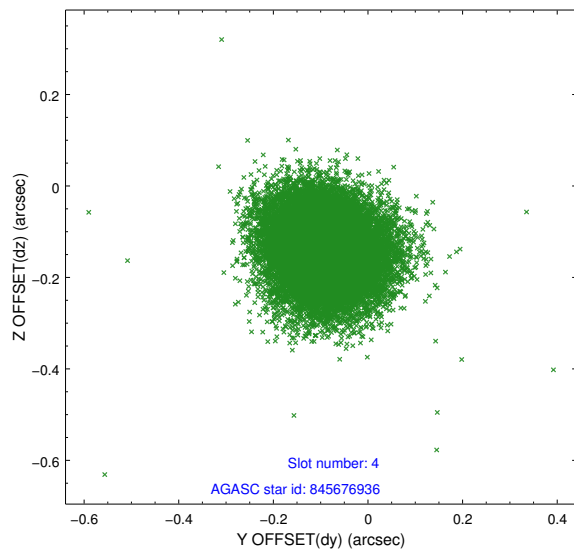
slot	status	id	mag	n_pts	med_dy	med_dz	dr1	dr2	ra	dec	mean_y	mean_z
0	FID	ACIS-I-1	6.98	8370	0.053	-0.026	0.011	0.019	0.000000	0.000000	923.85	-840.10
1	FID	ACIS-I-5	6.97	8373	-0.206	0.057	0.014	0.023	0.000000	0.000000	-1824.47	1057.47
2	FID	ACIS-I-6	6.97	8368	0.059	0.040	0.015	0.021	0.000000	0.000000	389.38	1701.98
3	GUIDE	845676728	9.31	16692	0.032	-0.335	0.103	0.166	52.877179	-27.664318	930.44	355.48
4	GUIDE	845676936	9.48	16685	-0.092	-0.137	0.096	0.158	52.843773	-27.880153	370.56	904.67
5	GUIDE	845807840	9.49	16728	0.174	0.369	0.118	0.186	54.104867	-27.888625	-2066.93	-2283.00
6	GUIDE	845807880	8.78	16733	0.178	0.078	0.104	0.160	53.382027	-27.886093	-672.03	-453.74
7	GUIDE	845676672	10.05	16687	-0.281	0.024	0.157	0.263	52.190429	-27.632676	2324.93	2048.14

2.4 Star Slots

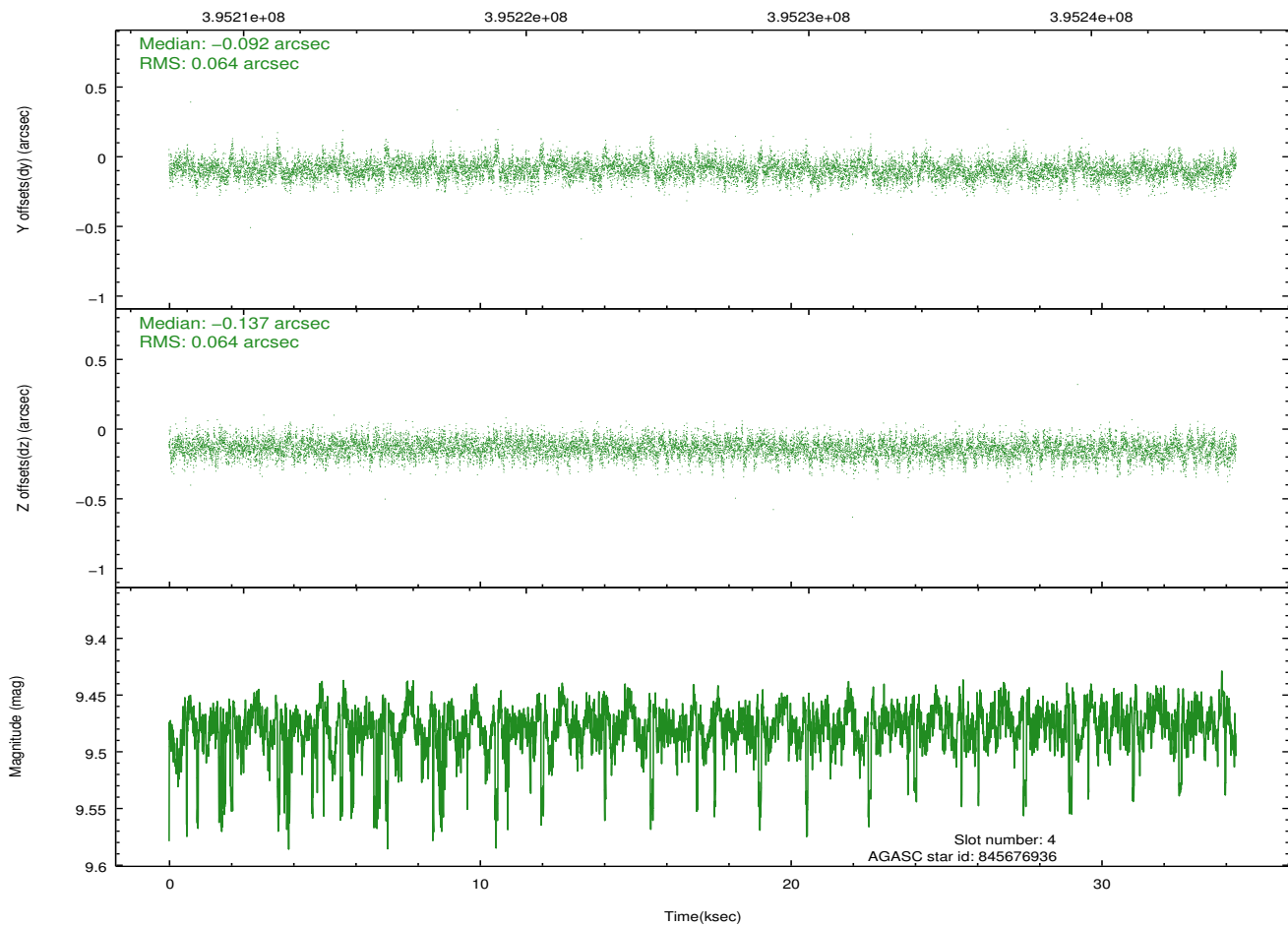
2.4.1 Slot 3



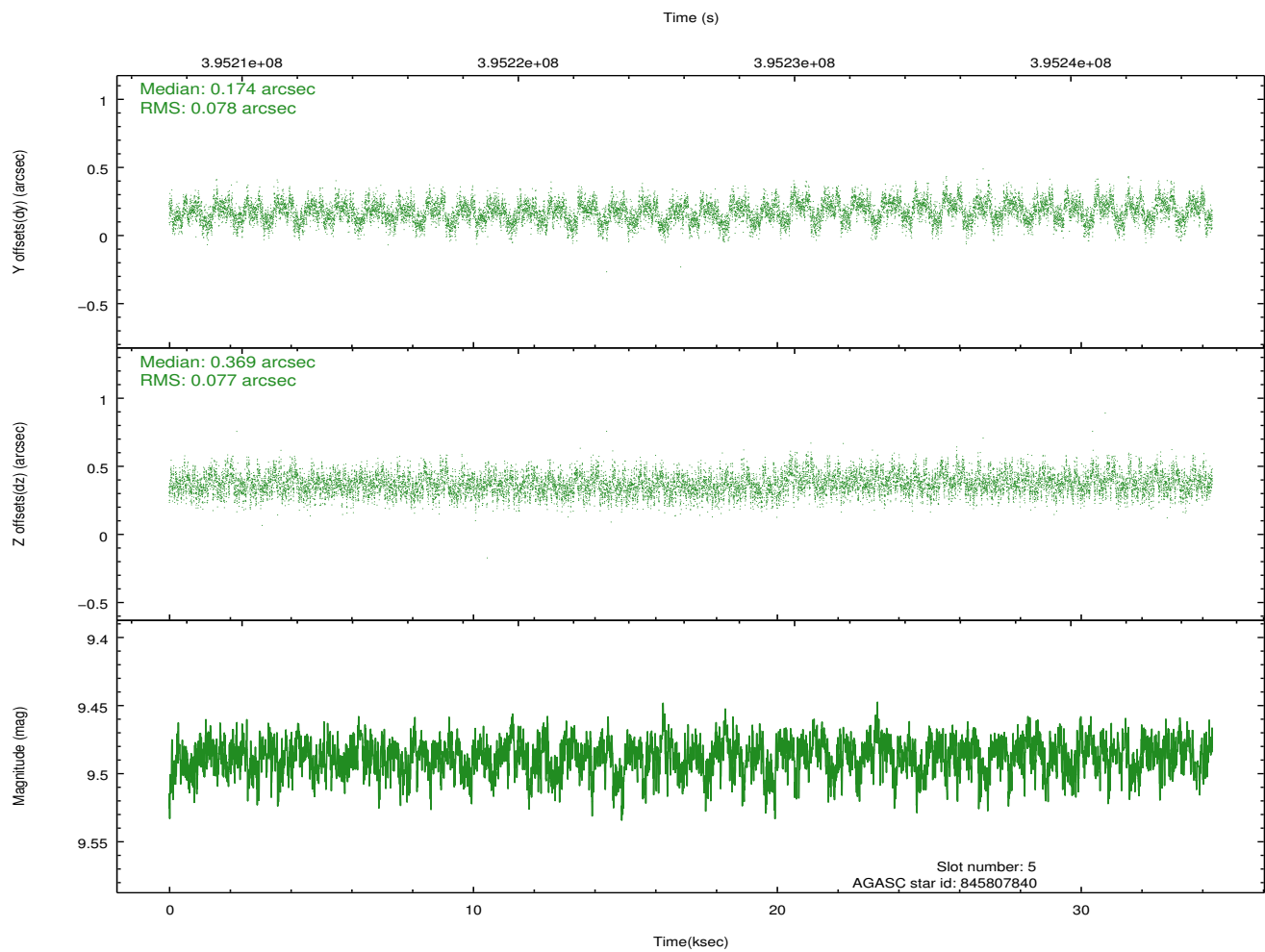
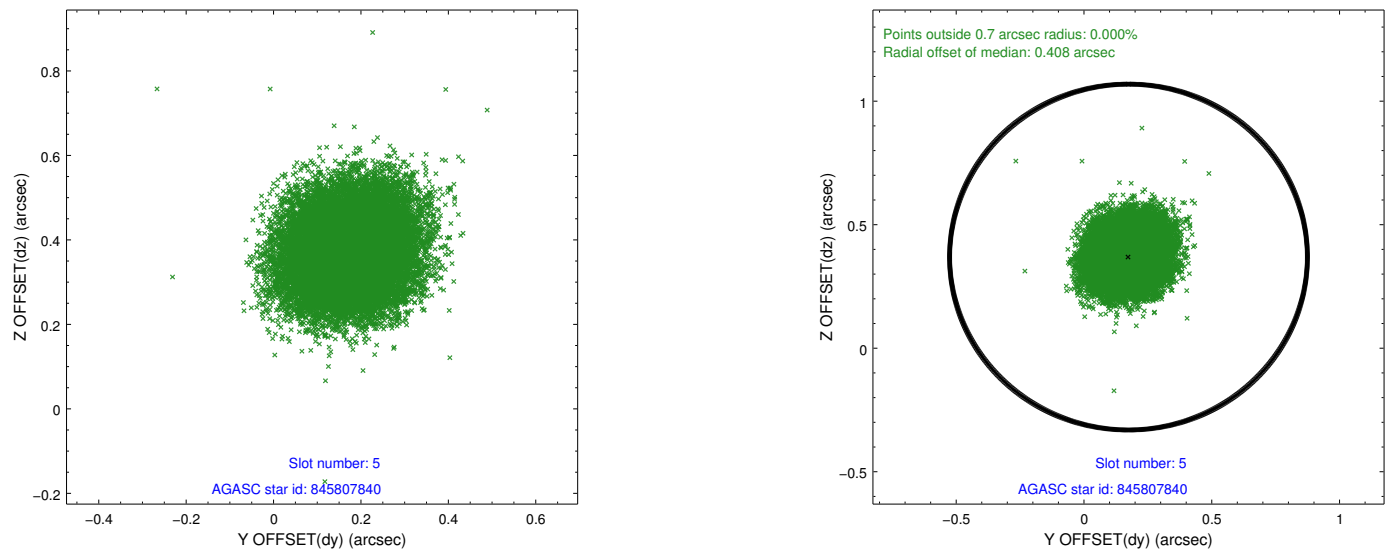
2.4.2 Slot 4



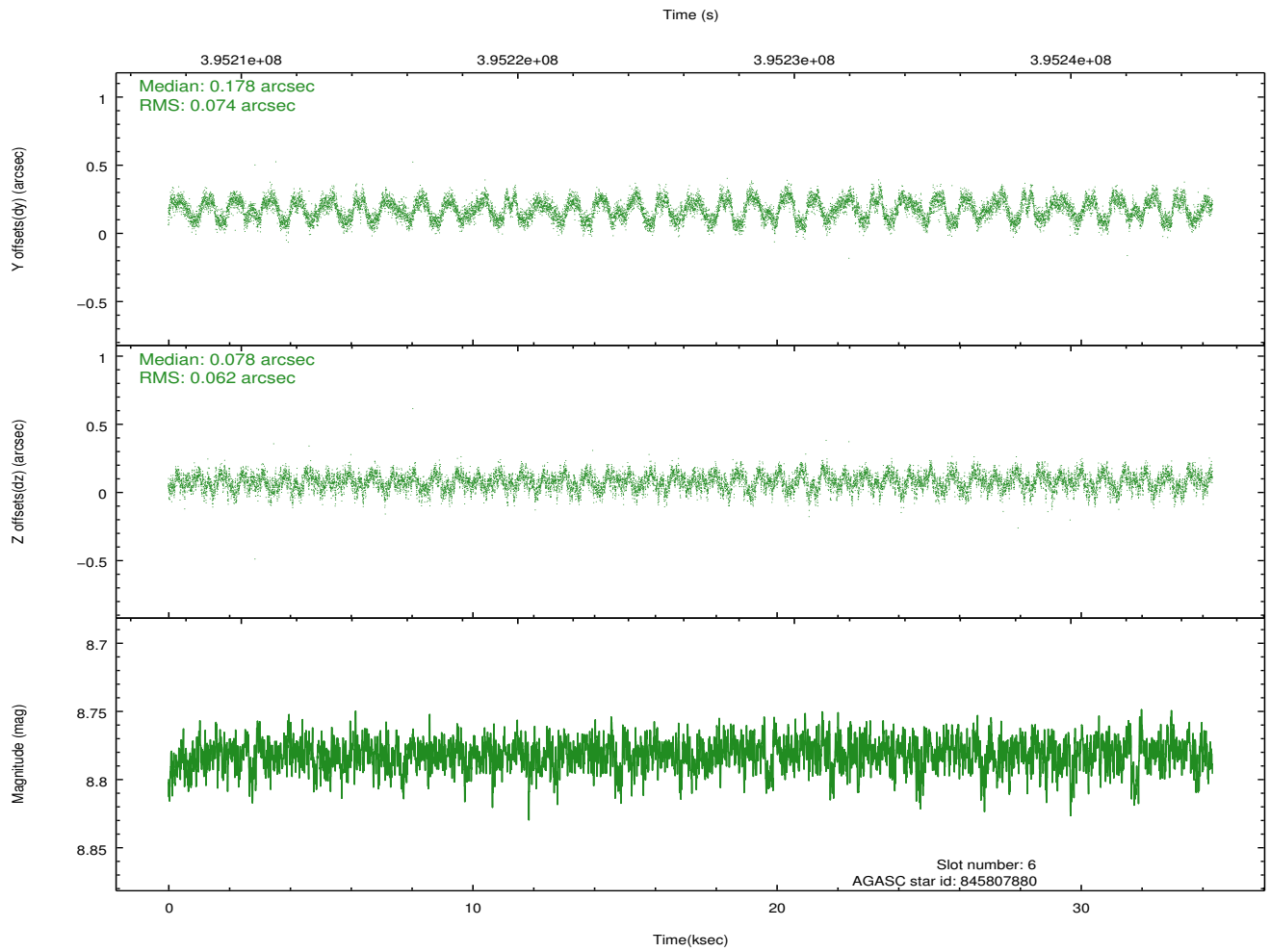
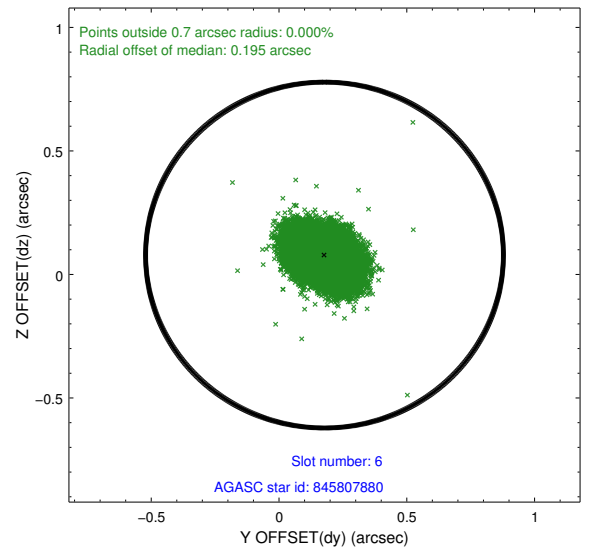
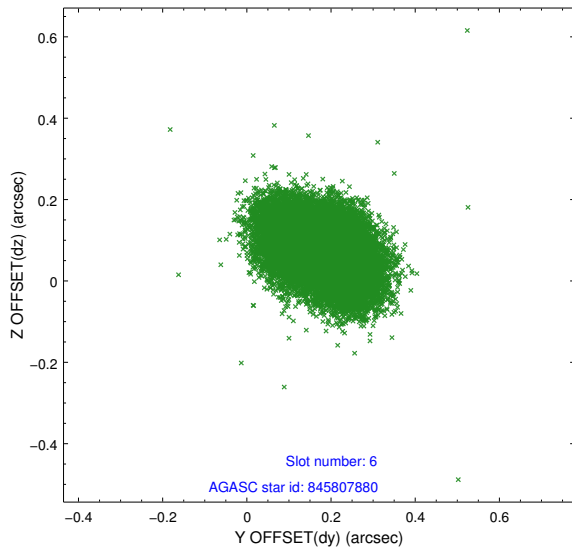
Time (s)



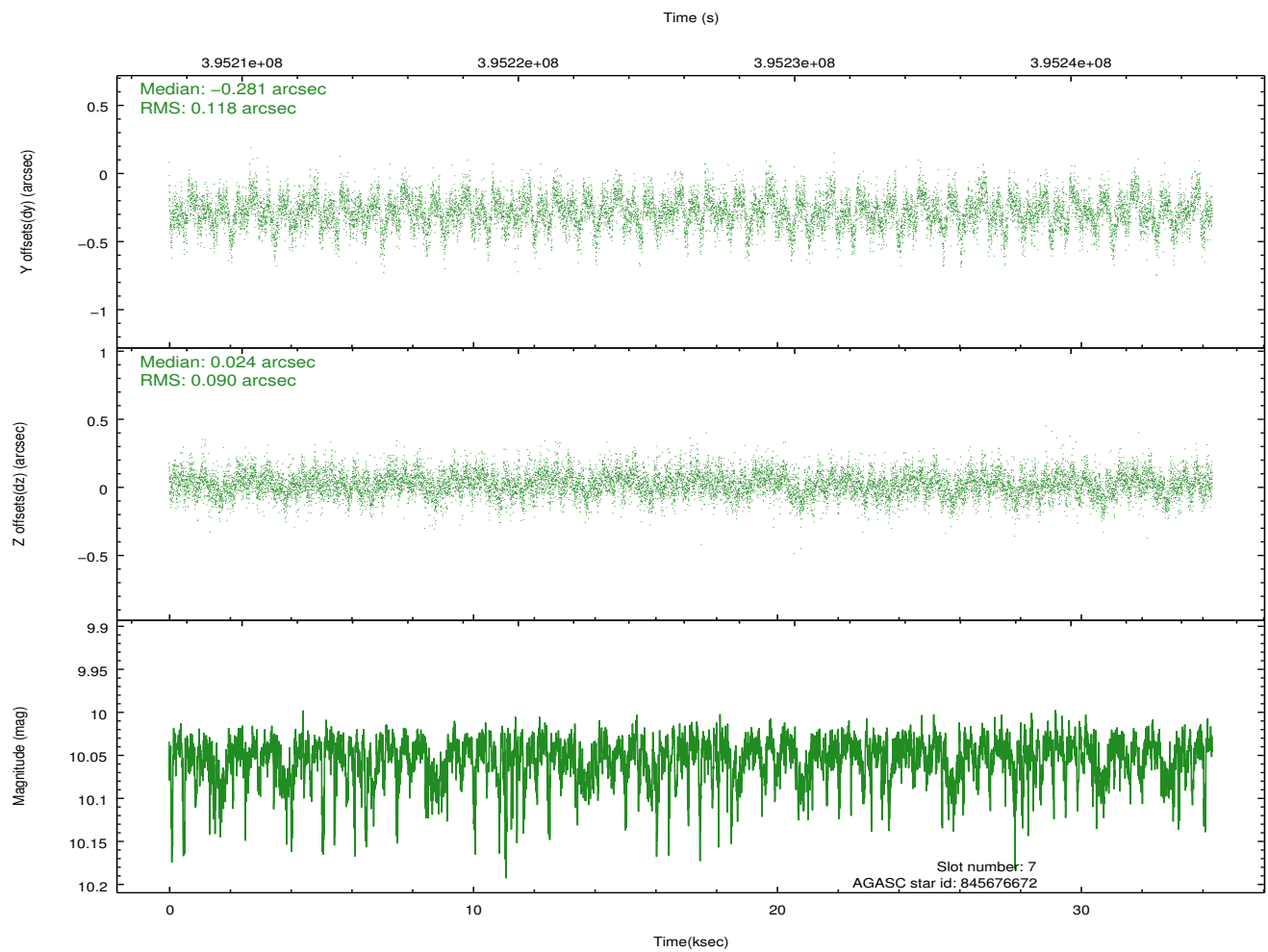
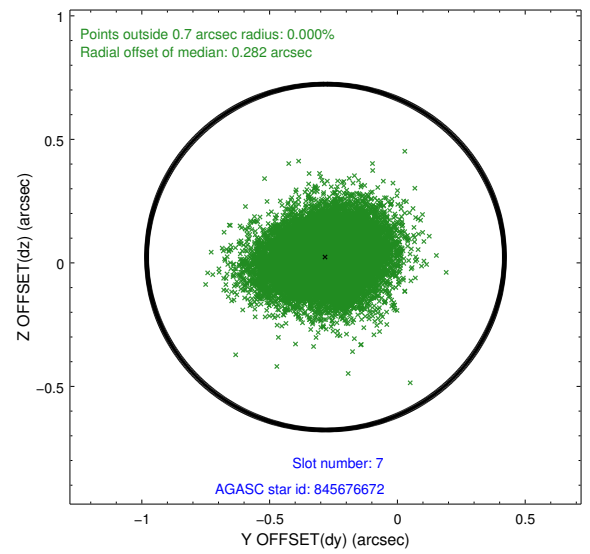
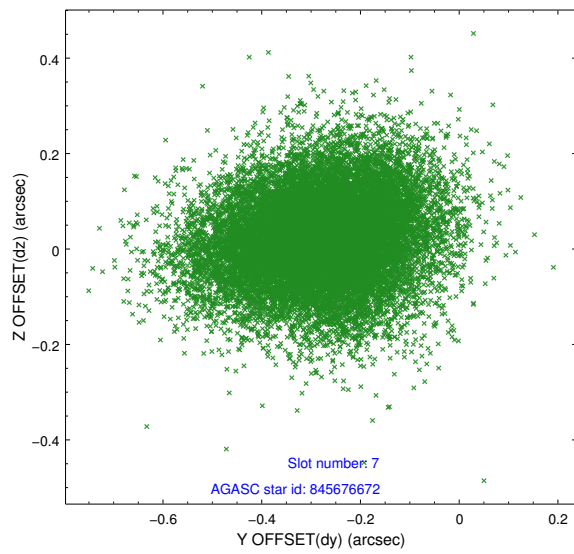
2.4.3 Slot 5



2.4.4 Slot 6

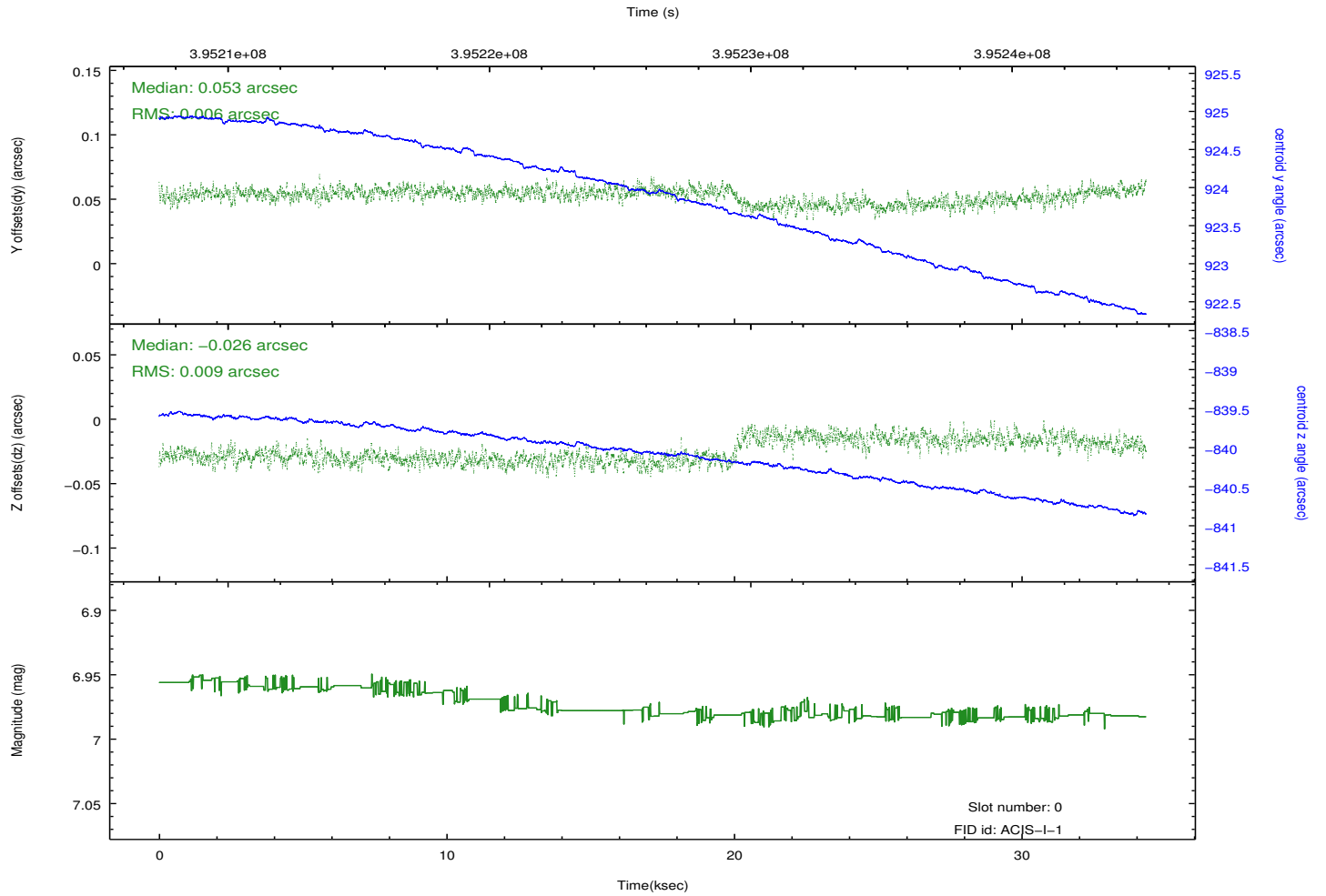
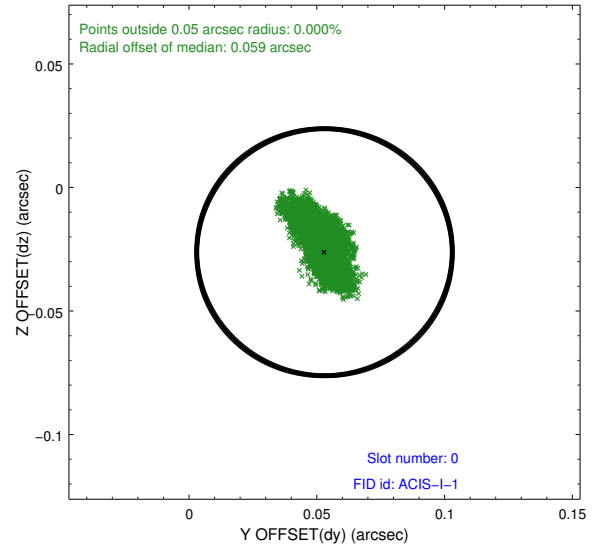
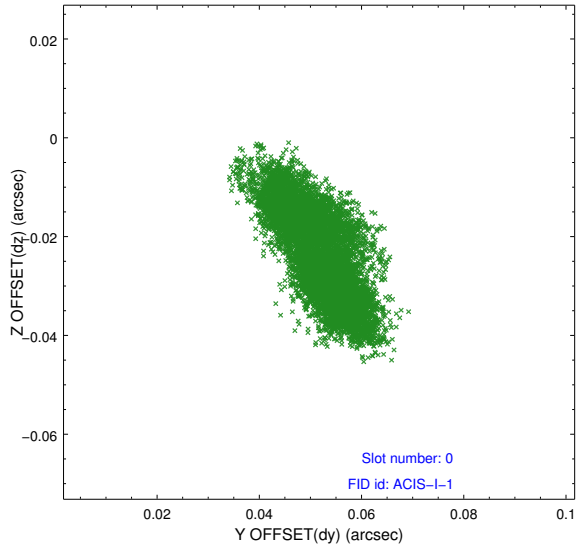


2.4.5 Slot 7

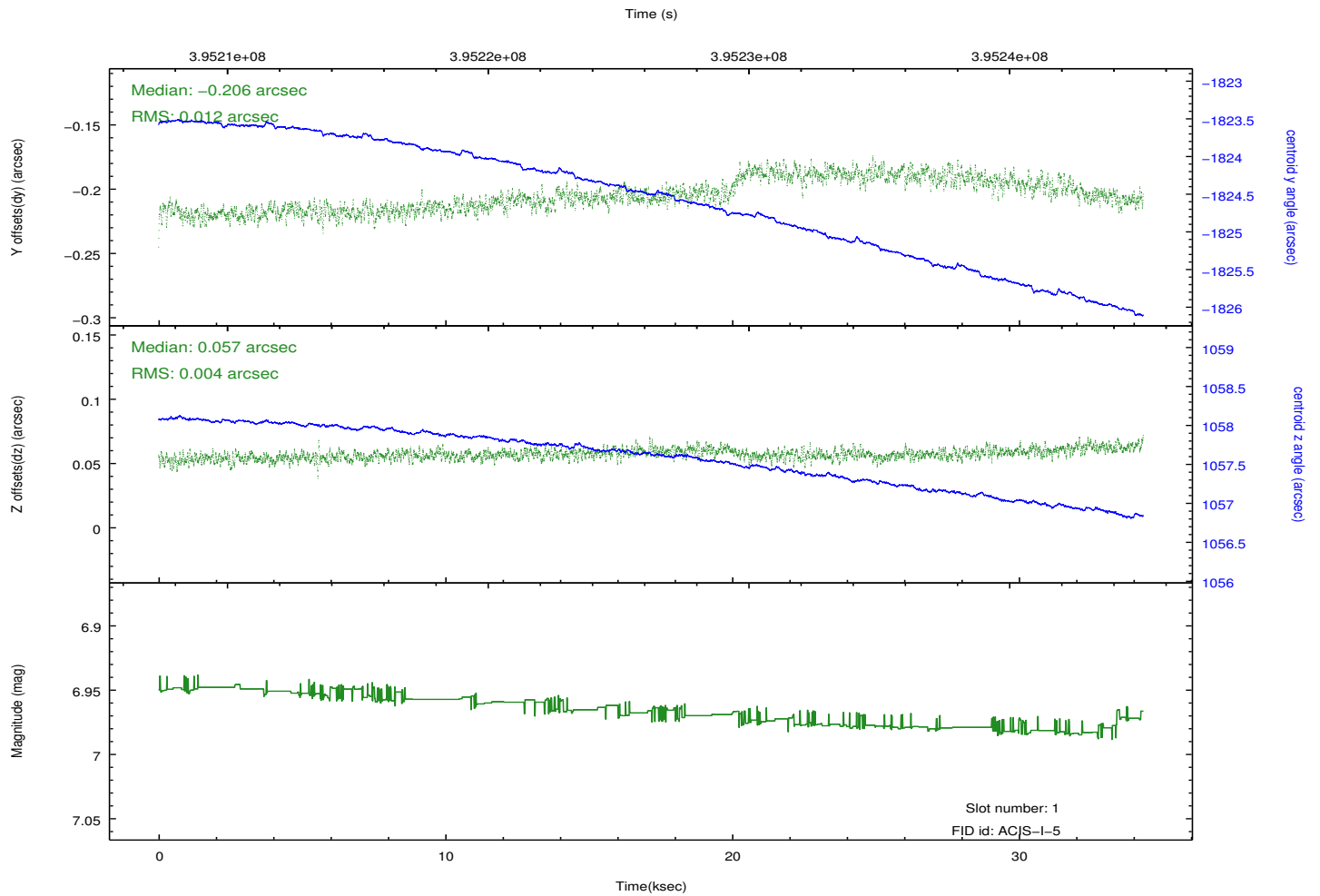
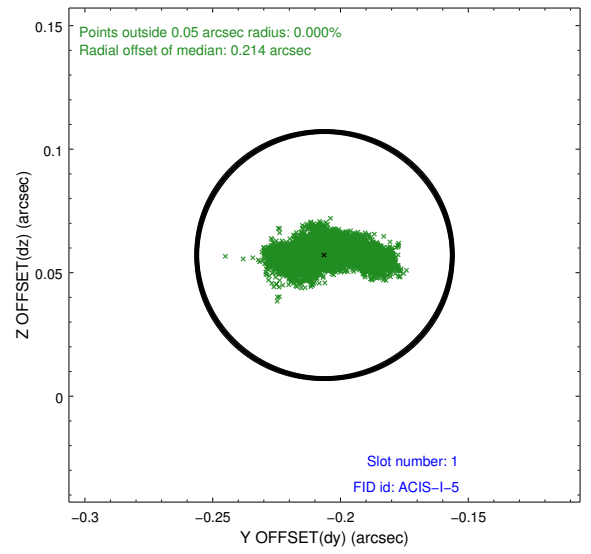
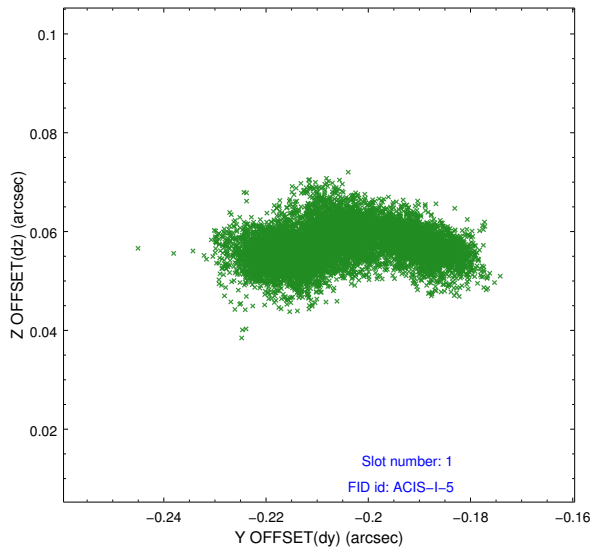


2.5 FID Slots

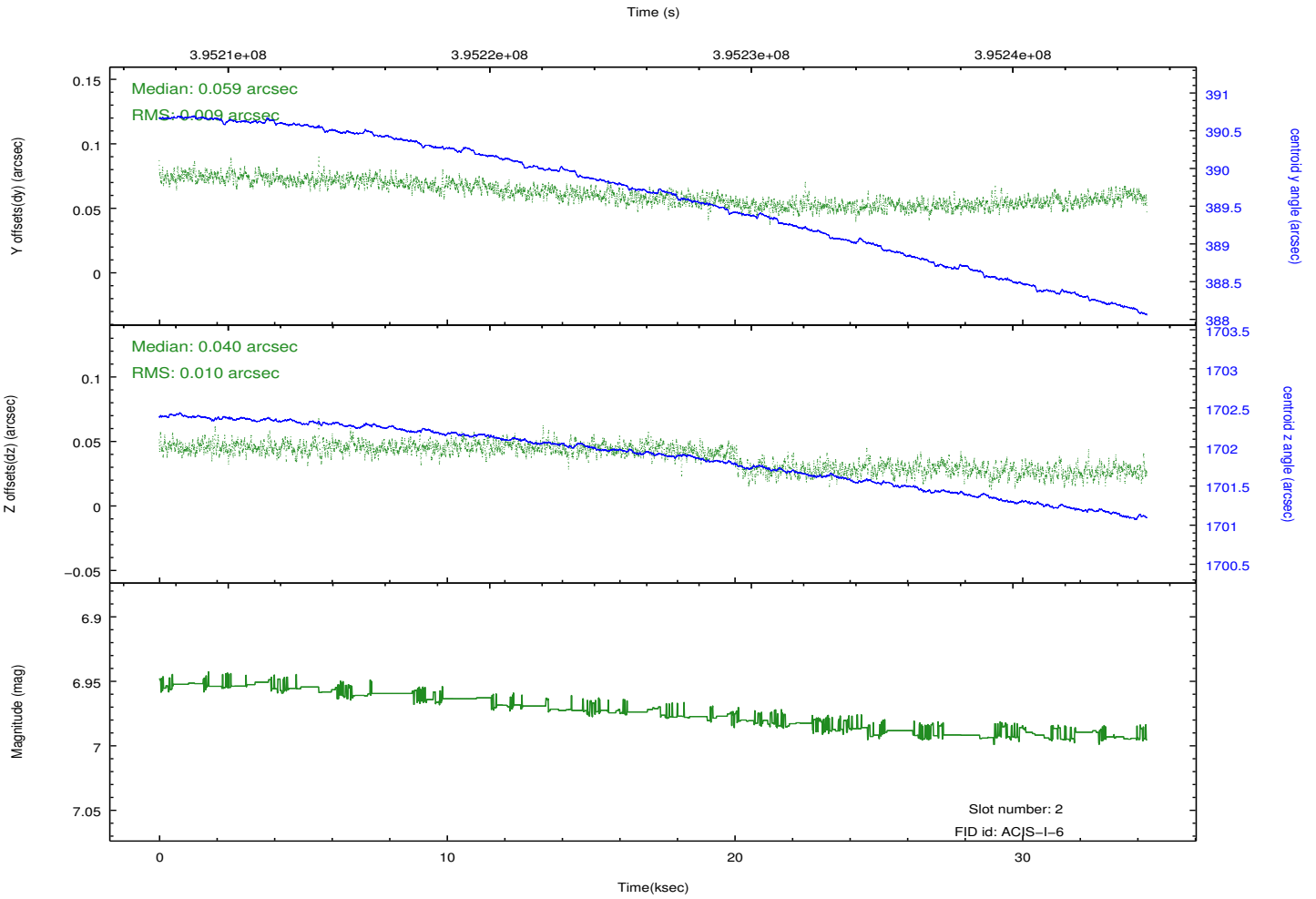
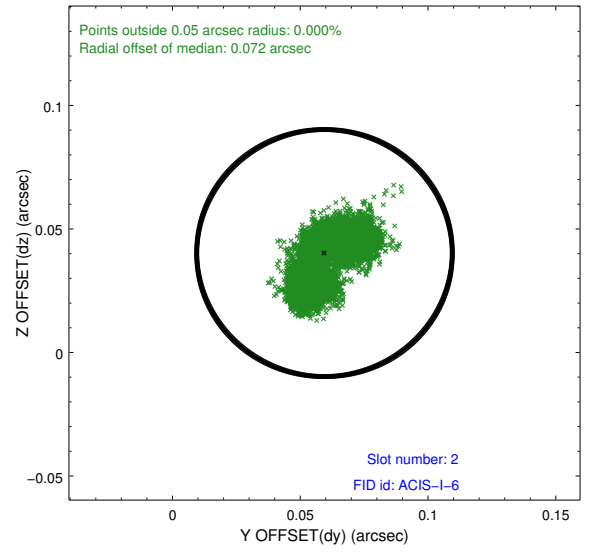
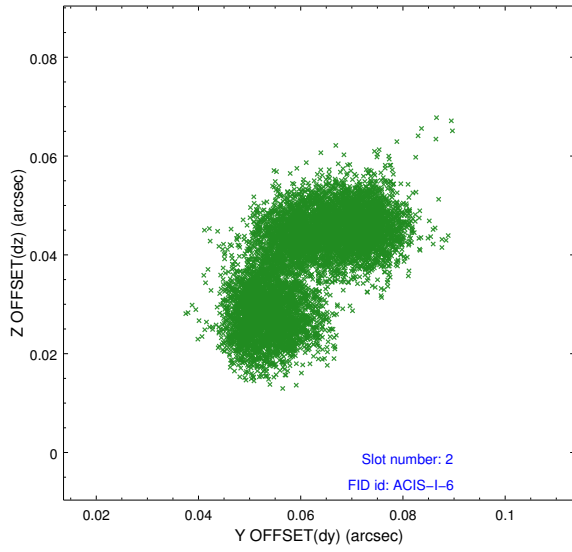
2.5.1 Slot 0



2.5.2 Slot 1



2.5.3 Slot 2



A Summary

A.1 Status

V&V Scientist	Jen Lauer
V&V Date (YYYY-MM-DD)	2012.07.09
V&V Edition	1
V&V Disposition and Status	OK
V&V Charge Time	34.254918332815

A.2 Comments