

V&V Reference Report

L2 ASCDS Version : 8.4.5

Observation 12470 - L2 Version 2
Chandra X-Ray Center

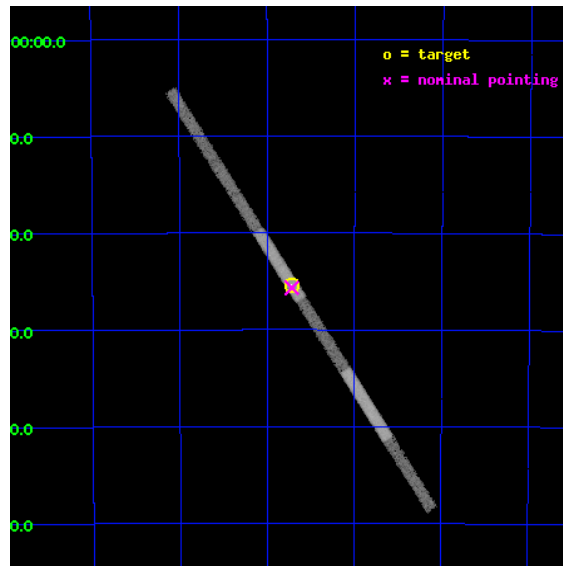
L2 Processing Date : Jul 4 2012

Contents

1	Front	2
2	OBI	3
2.1	OBI	3
2.1.1	Images	3
2.1.2	Bias	3
2.1.3	Parameters	4
2.1.4	Events	4
2.2	Compared Parameters	5
2.3	Aspect	6
2.4	Star Slots	9
2.4.1	Slot 3	9
2.4.2	Slot 4	10
2.4.3	Slot 5	11
2.4.4	Slot 6	12
2.4.5	Slot 7	13
2.5	FID Slots	14
2.5.1	Slot 0	14
2.5.2	Slot 1	15
2.5.3	Slot 2	16
A	Summary	17
A.1	Status	17
A.2	Comments	17

1 Front

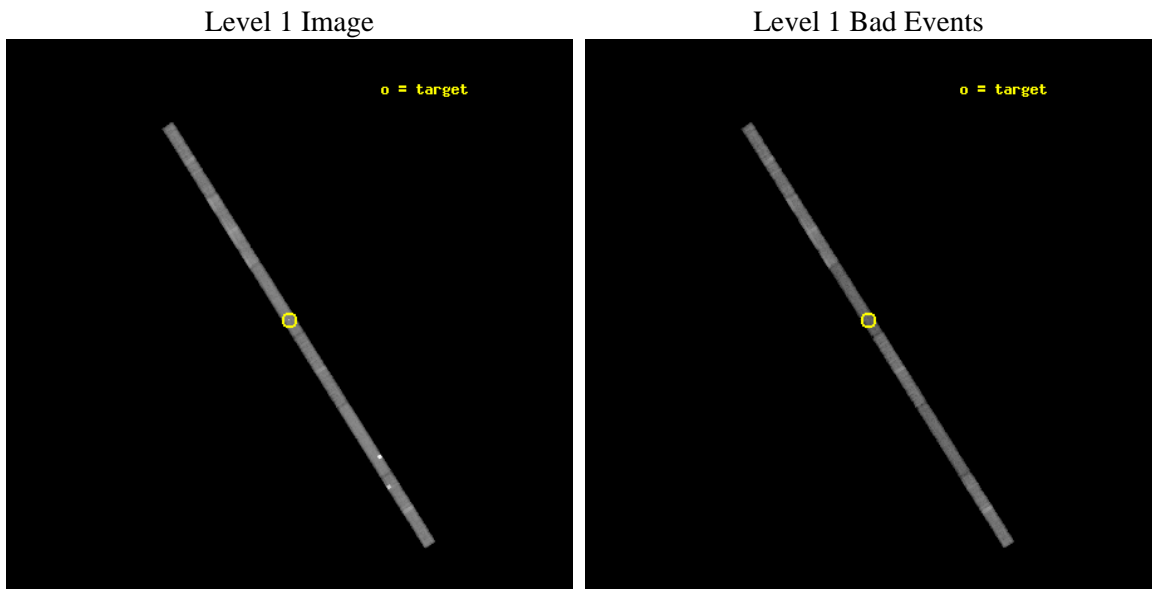
seq_num	401211	Sequence number
obs_id	12470	Observation id
title	Validating Neutron Star Radius Measurements	Proposal title
observer	Prof. Deepto Chakrabarty	Principal investigator
object	4U 1608-522	Source name
dtcycle	0	
cycle	P	events from which exps? Prim/Second/Both
ra_targ	243.179167	Observer's specified target RA [deg]
dec_targ	-52.423056	Observer's specified target Dec [deg]
ra_nom	243.17908792481	Nominal RA [deg]
dec_nom	-52.427922155477	Nominal Dec [deg]
roll_nom	237.63572212608	Nominal Roll [deg]
revision	2	Processing version of data
ontime	25064.1995731	Sum of GTIs [s]
livetime	23676.103450785	Livetime [s]
ontime4	25064.1995731	Sum of GTIs [s]
ontime5	25064.1995731	Sum of GTIs [s]
ontime6	25064.1995731	Sum of GTIs [s]
ontime7	25064.1995731	Sum of GTIs [s]
ontime8	25064.1995731	Sum of GTIs [s]
ontime9	25064.1995731	Sum of GTIs [s]
l2events	46965	Number of level 2 events



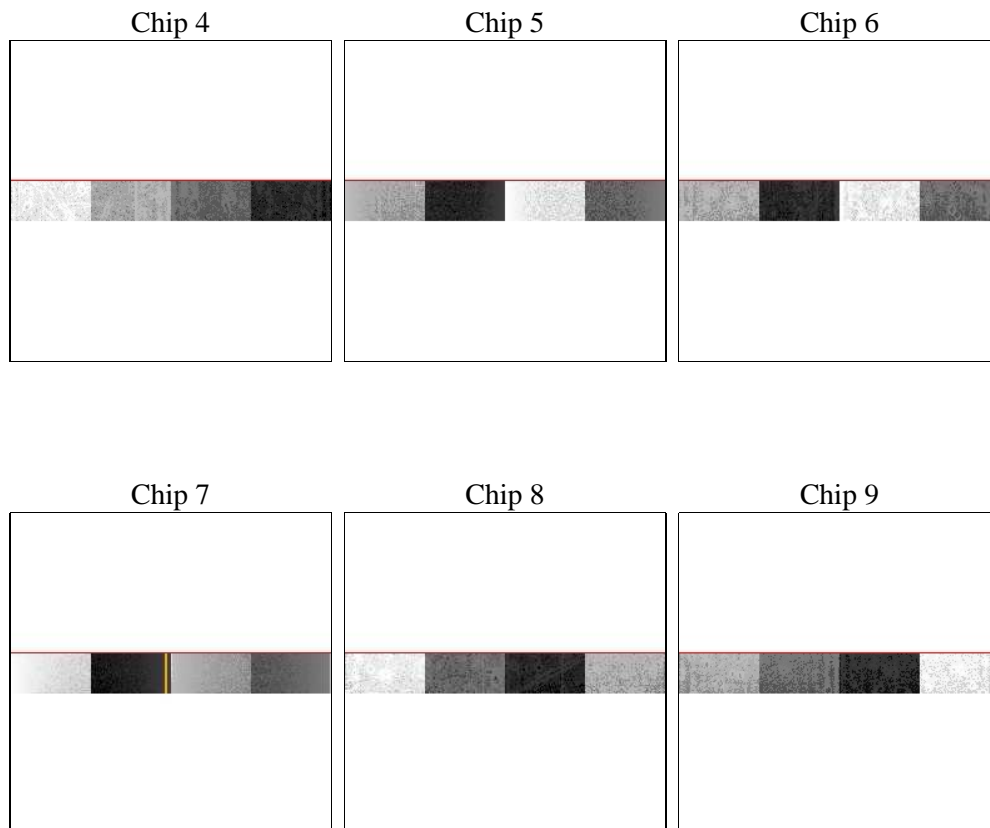
2 OBI

2.1 OBI

2.1.1 Images



2.1.2 Bias



2.1.3 Parameters

obi_num	0	Obi number	sched_exp_time	25000.000000	[s] Scheduled observation exposure time
ascdsver	8.4.5	Processing system revision	ontime	25064.1995731	Sum of GTIs [s]
caldbver	4.5.0	 	ontime4	25064.1995731	Sum of GTIs [s]
date	2012-07-04T16:23:42	Date and time of file creation	ontime5	25064.1995731	Sum of GTIs [s]
revision	2	Processing version of data	ontime6	25064.1995731	Sum of GTIs [s]
			ontime7	25064.1995731	Sum of GTIs [s]
			ontime8	25064.1995731	Sum of GTIs [s]
			ontime9	25064.1995731	Sum of GTIs [s]
			l1events	259372	Number of level 1 events

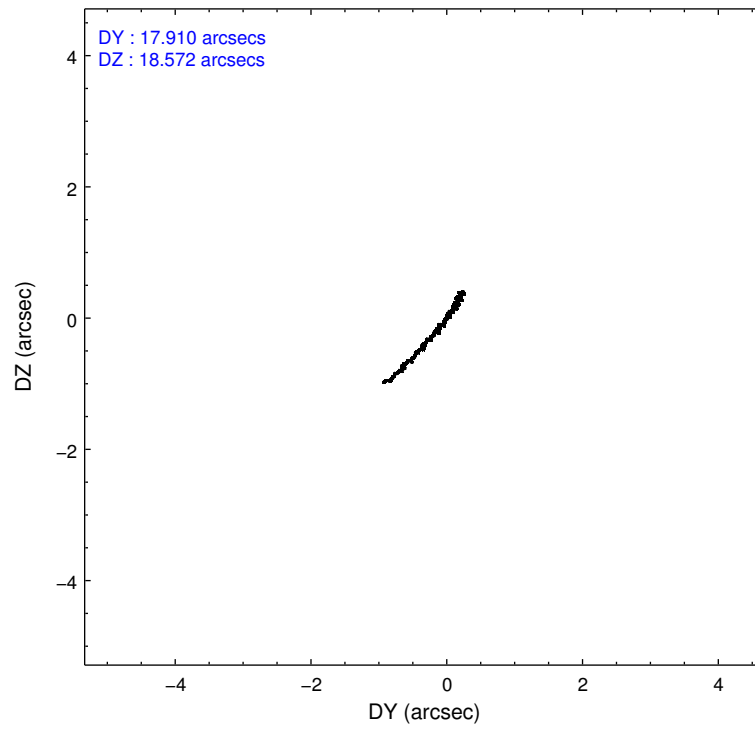
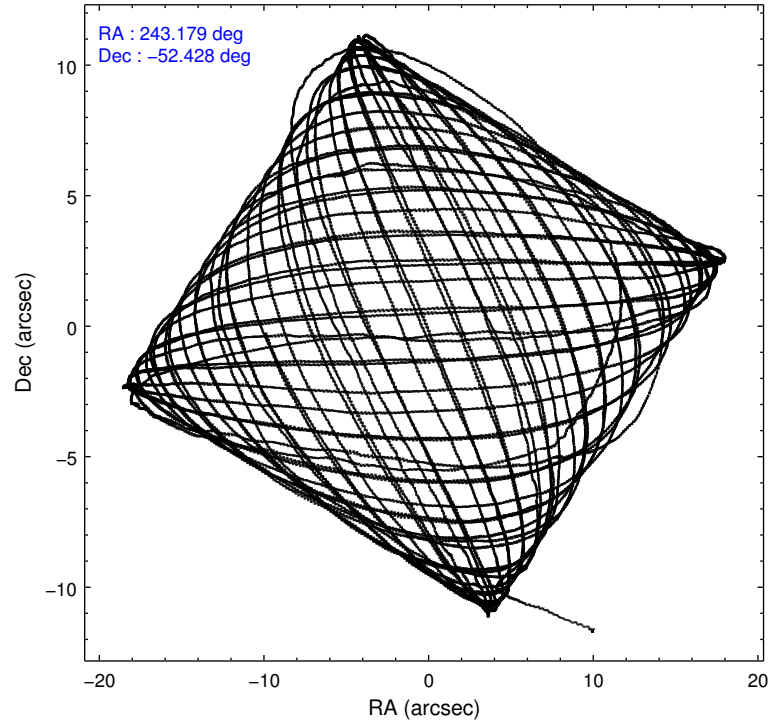
2.1.4 Events

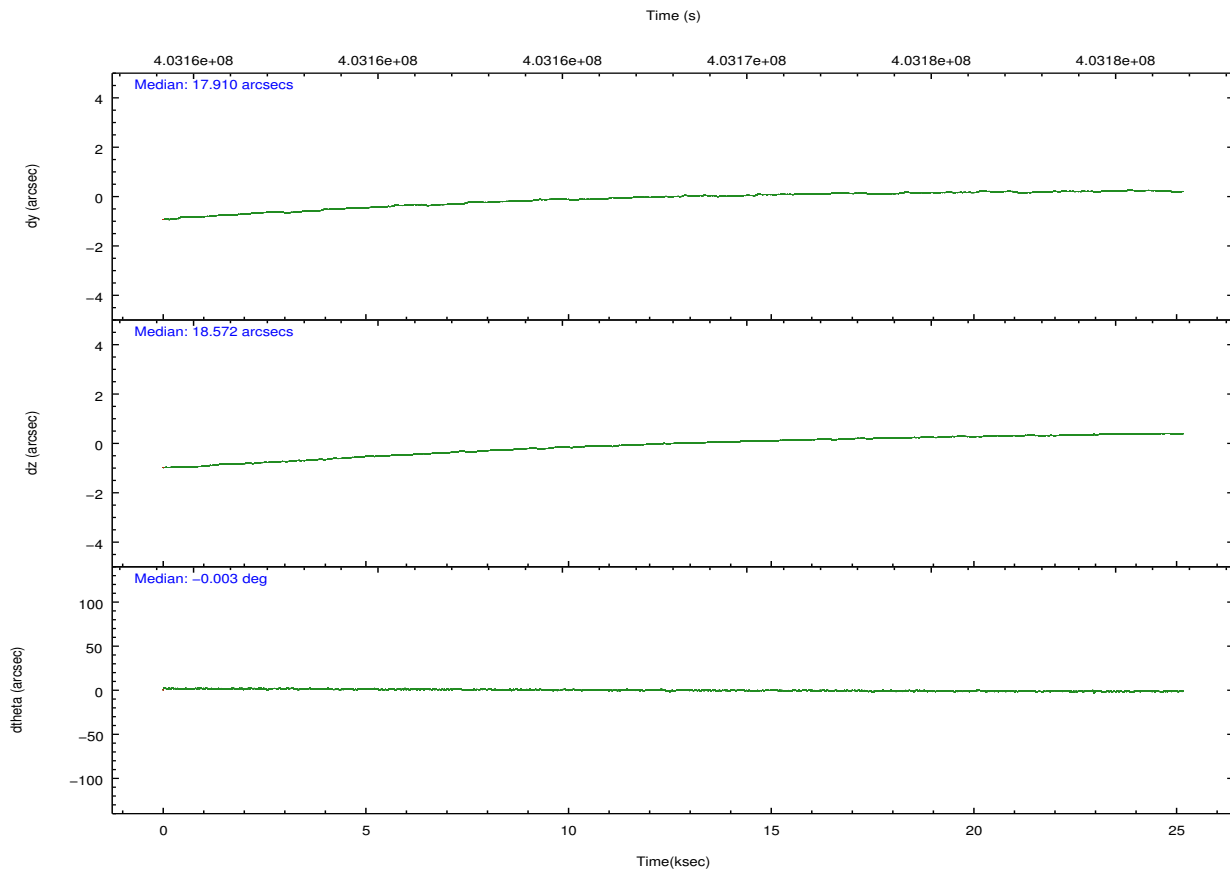
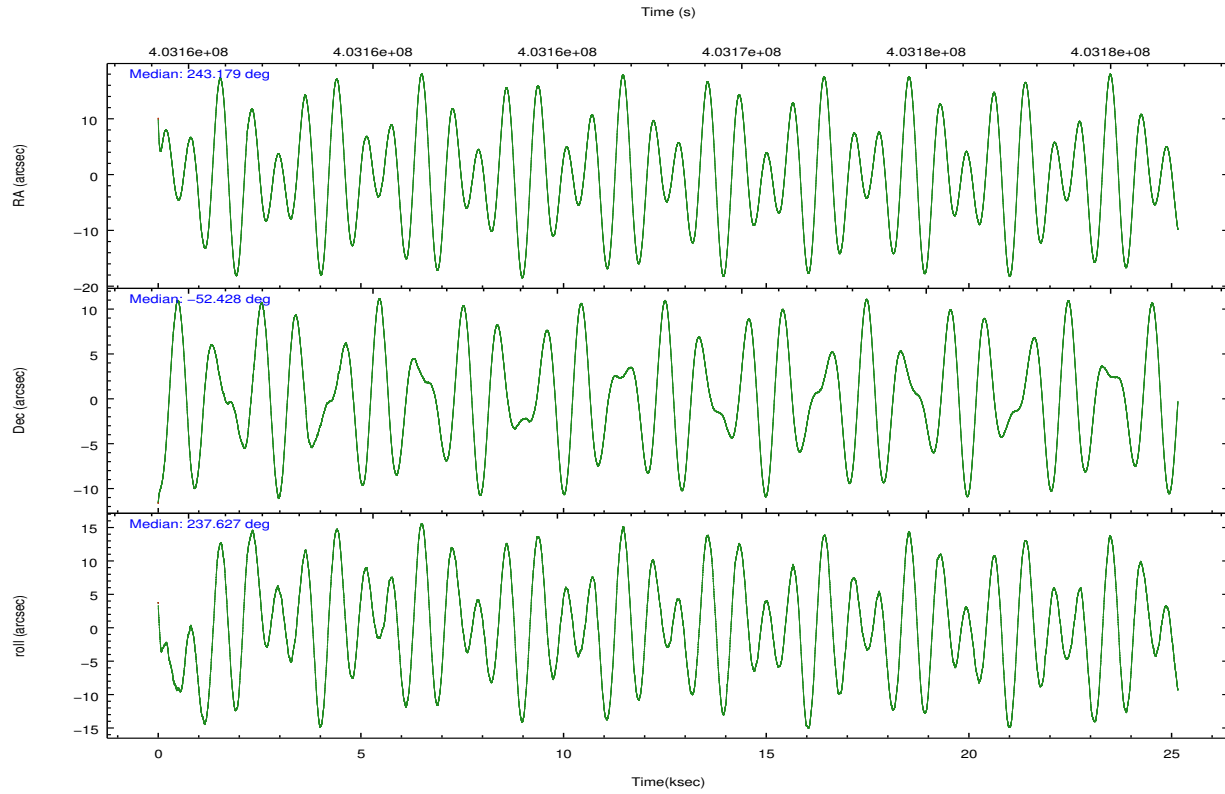
	ccd 4	ccd 5	ccd 6	ccd 7	ccd 8	ccd 9		ccd 4	ccd 5	ccd 6	ccd 7	ccd 8	ccd 9
level 1 events	45323	71782	31693	33448	46311	30815	grade 0 events	9666	28377	1077	1853	2756	1352
rejected events	32881	19230	28088	17073	35771	26999		21%	39%	3%	5%	5%	4%
rejected %	72%	26%	88%	51%	77%	87%	grade 1 events	65	112	9	43	17	13
								0%	0%	0%	0%	0%	0%
							grade 2 events	898	11964	689	3517	2150	687
								1%	16%	2%	10%	4%	2%
							grade 3 events	669	1445	617	1970	1227	536
								1%	2%	1%	5%	2%	1%
							grade 4 events	555	1644	605	1875	1124	604
								1%	2%	1%	5%	2%	1%
							grade 5 events	1241	3518	1121	3334	1645	1201
								2%	4%	3%	9%	3%	3%
							grade 6 events	654	9126	617	7161	3283	637
								1%	12%	1%	21%	7%	2%
							grade 7 events	31575	15596	26958	13695	34109	25785
								69%	21%	85%	40%	73%	83%

2.2 Compared Parameters

Parameter	Planned	Actual	Parameter	Planned	Actual
Instrument	ACIS	ACIS	Obspar format version number	7	7
Detector	ACIS-456789	ACIS-456789	Obspar file type	PREDICTED	ACTUAL
Grating	NONE	NONE	Obspar update status	NONE	UPDATED
Data mode	FAINT	FAINT	CCD I0 on	N	N
Observation mode	POINTING	POINTING	CCD I1 on	N	N
[deg] Pointing RA	243.180297	243.1790879248069	CCD I2 on	N	N
[deg] Pointing Dec	-52.400574	-52.42792215547694	CCD I3 on	N	N
[deg] Pointing Roll	237.480058	237.6357221260795	CCD S0 on	O1	Y
[mm] SIM focus pos	-0.684267	-0.6828225247311905	CCD S1 on	Y	Y
[mm] SIM defocus	0	0.001444936568705701	CCD S2 on	Y	Y
[mm] SIM translation stage pos	-190.132523	-190.1425803651734	CCD S3 on	Y	Y
[mm] SIM translation stage offset	0	0.01005778216563158	CCD S4 on	Y	Y
[s] Observation start time (MET)	403155581.184000	403154109.77061	CCD S5 on	Y	Y
Observation start date	2010-10-11T03:38:35	2010-10-11T03:15:09	Number of optional ACIS chips dropped	0	0
[s] Observation end time (MET)	403180581.184000	403180924.28449	On-chip summing requested	N	N
Observation end date	2010-10-11T10:35:15	2010-10-11T10:42:04	Subarray requested	CUSTOM	1/8
Read mode	TIMED	TIMED	Subarray start row	449	449
			Subarray row count	128	128
			Alternating exposures requested	N	N
			[s] Primary exposure time	0.000000	0.7

2.3 Aspect



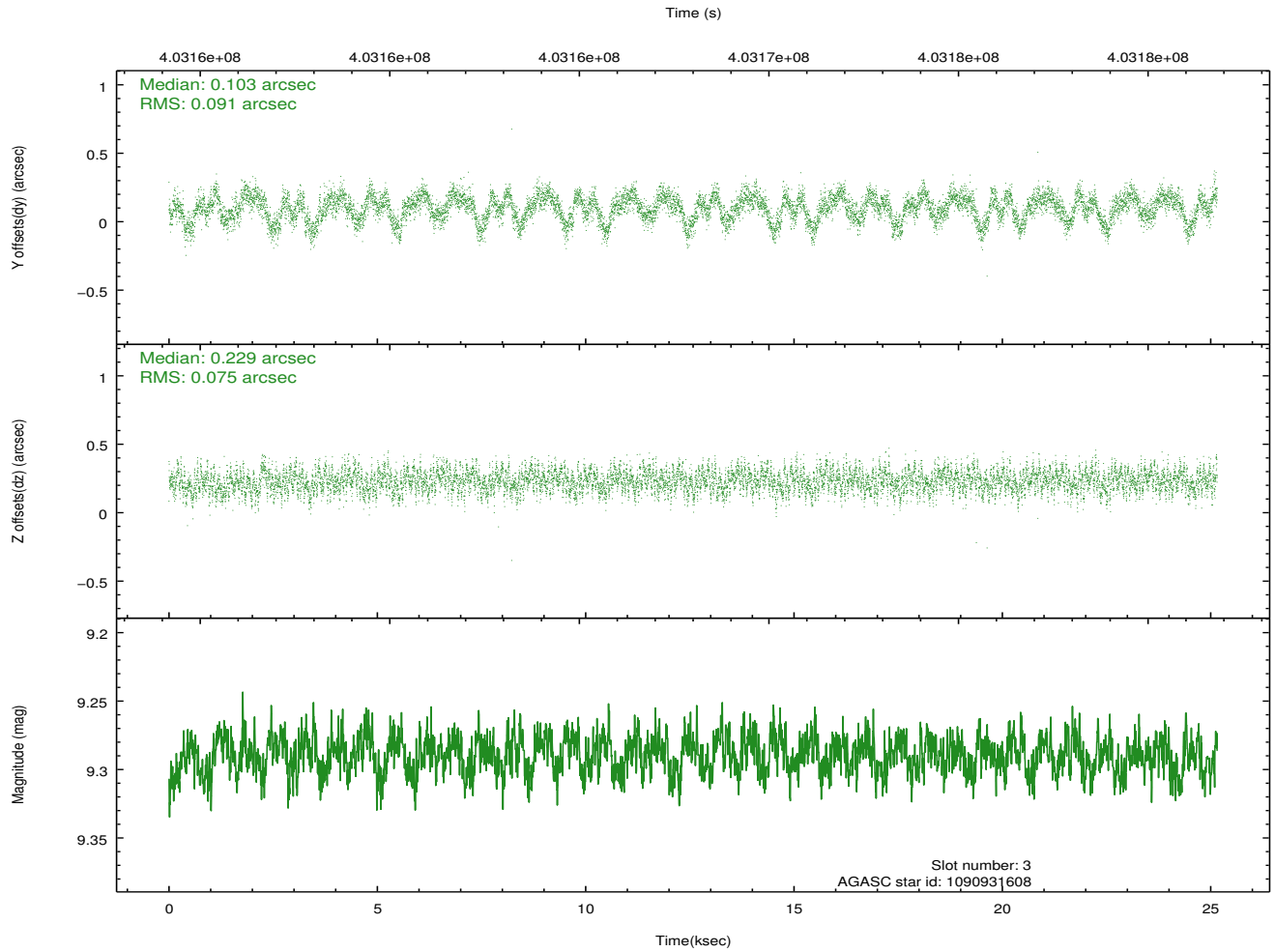
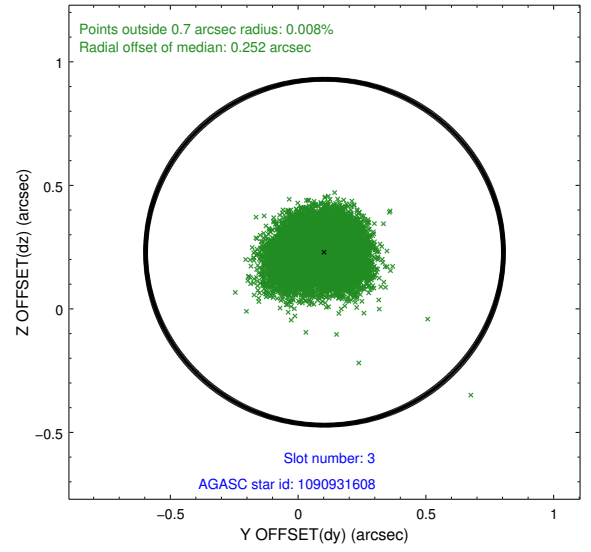
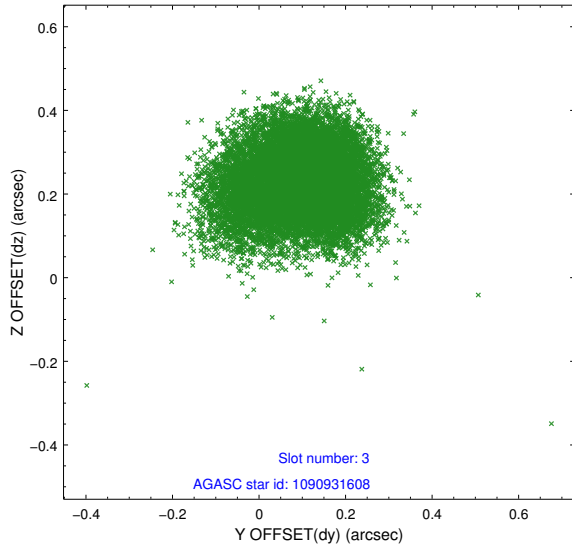


Slot Statistics

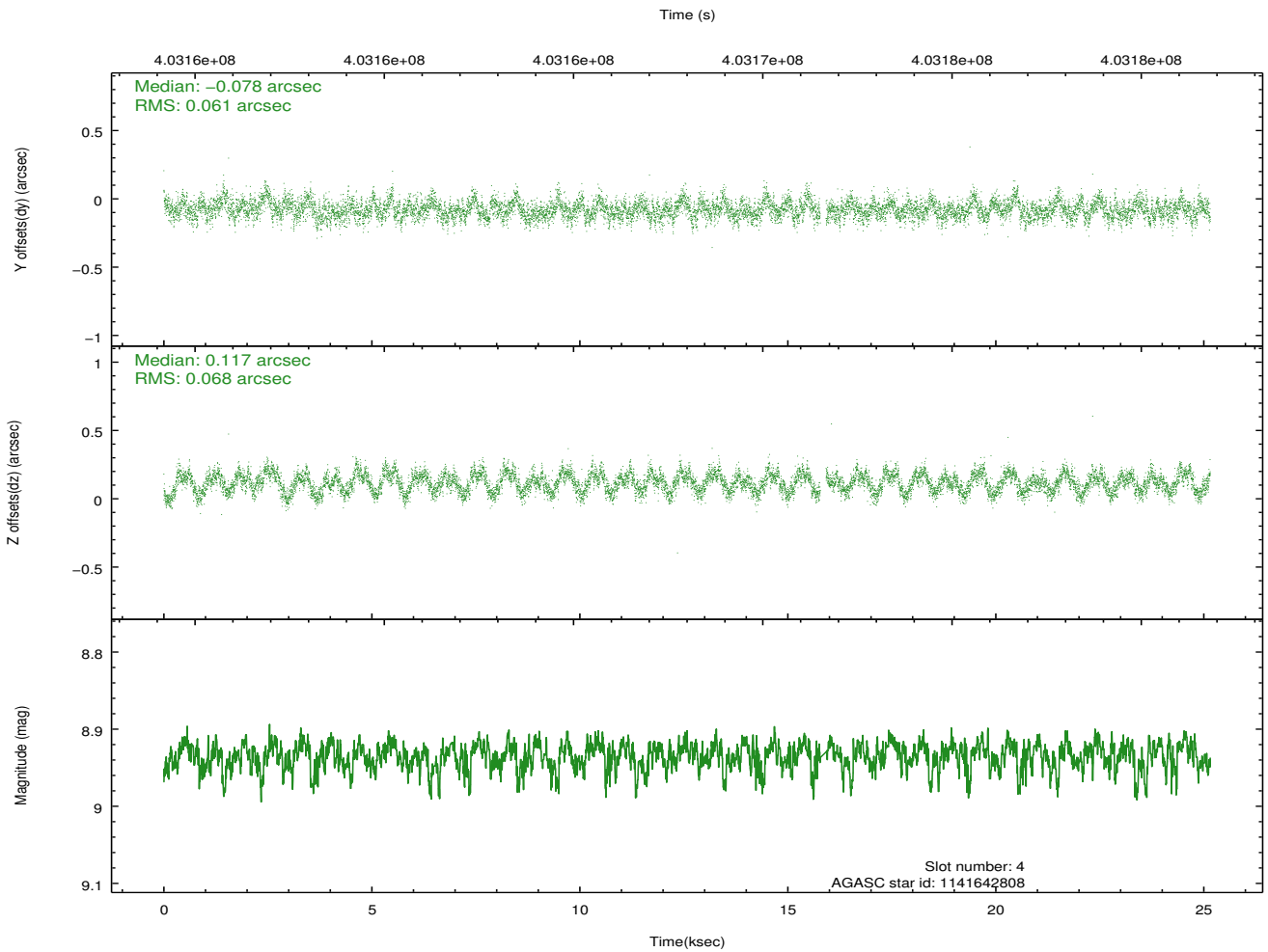
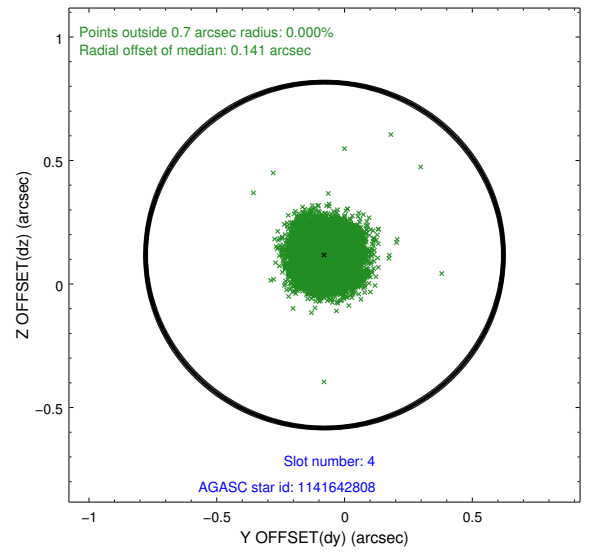
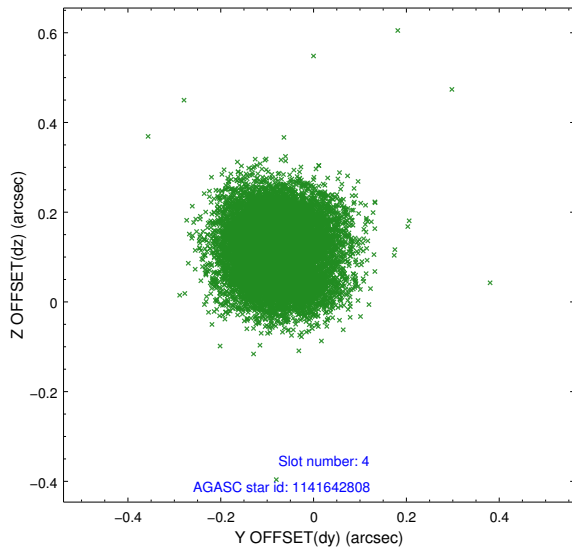
slot	status	id	mag	n_pts	med_dy	med_dz	dr1	dr2	ra	dec	mean_y	mean_z
0	FID	ACIS-S-2	6.89	6137	-0.068	-0.045	0.012	0.019	0.000000	0.000000	-770.93	-1739.91
1	FID	ACIS-S-4	6.97	6136	0.193	0.045	0.018	0.029	0.000000	0.000000	2142.58	168.49
2	FID	ACIS-S-5	7.00	6136	-0.155	0.009	0.011	0.018	0.000000	0.000000	-1823.68	162.32
3	GUIDE	1090931608	9.29	12260	0.103	0.229	0.126	0.202	243.085233	-52.161901	-610.95	-638.82
4	GUIDE	1141642808	8.93	12198	-0.078	0.117	0.099	0.155	242.344762	-52.759774	2078.21	-833.75
5	GUIDE	1141772104	6.07	12273	-0.034	-0.287	0.058	0.092	244.177019	-52.603809	-541.70	2238.33
6	GUIDE	1090912584	8.54	12268	0.041	0.097	0.073	0.119	243.674080	-52.336921	-773.73	794.72
7	GUIDE	1141646040	8.74	12262	-0.028	-0.153	0.078	0.127	243.143039	-52.904491	1573.35	907.27

2.4 Star Slots

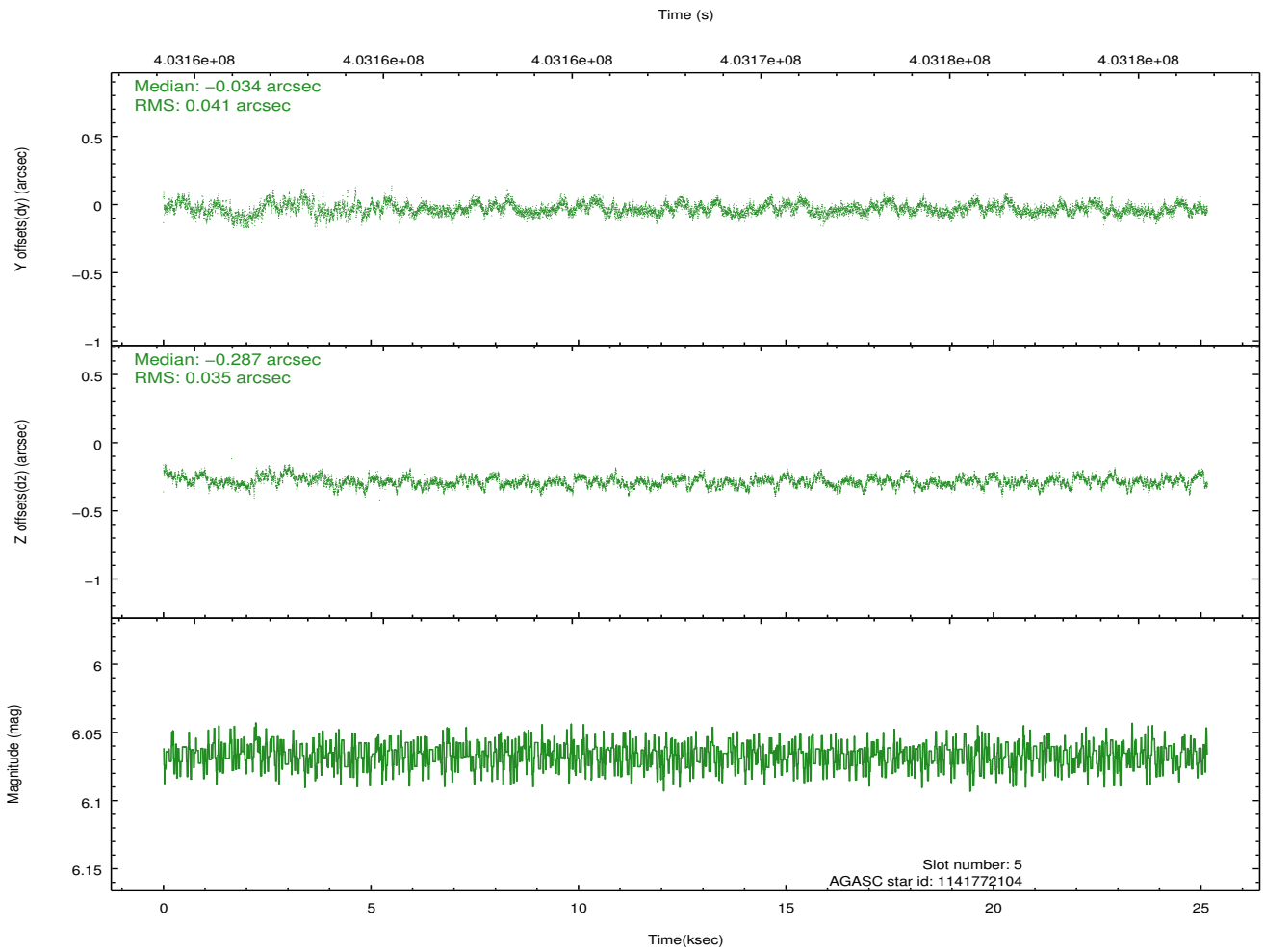
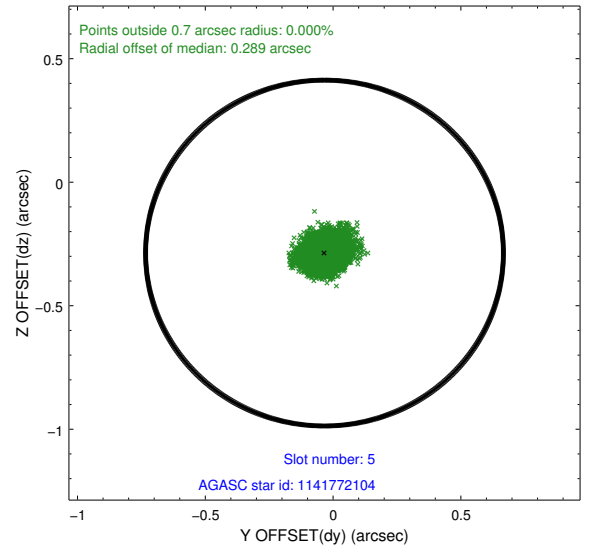
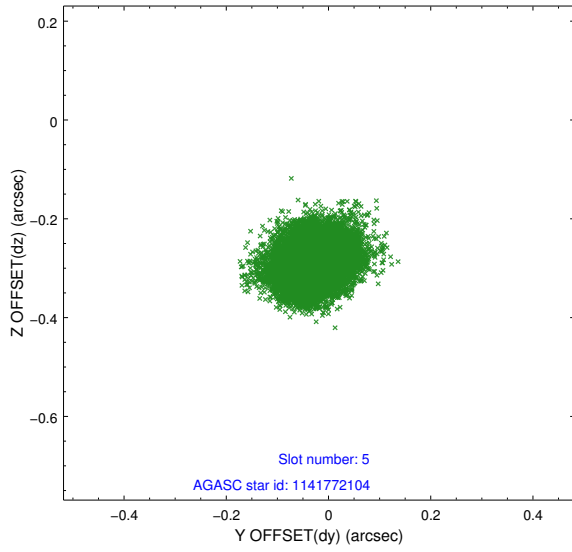
2.4.1 Slot 3



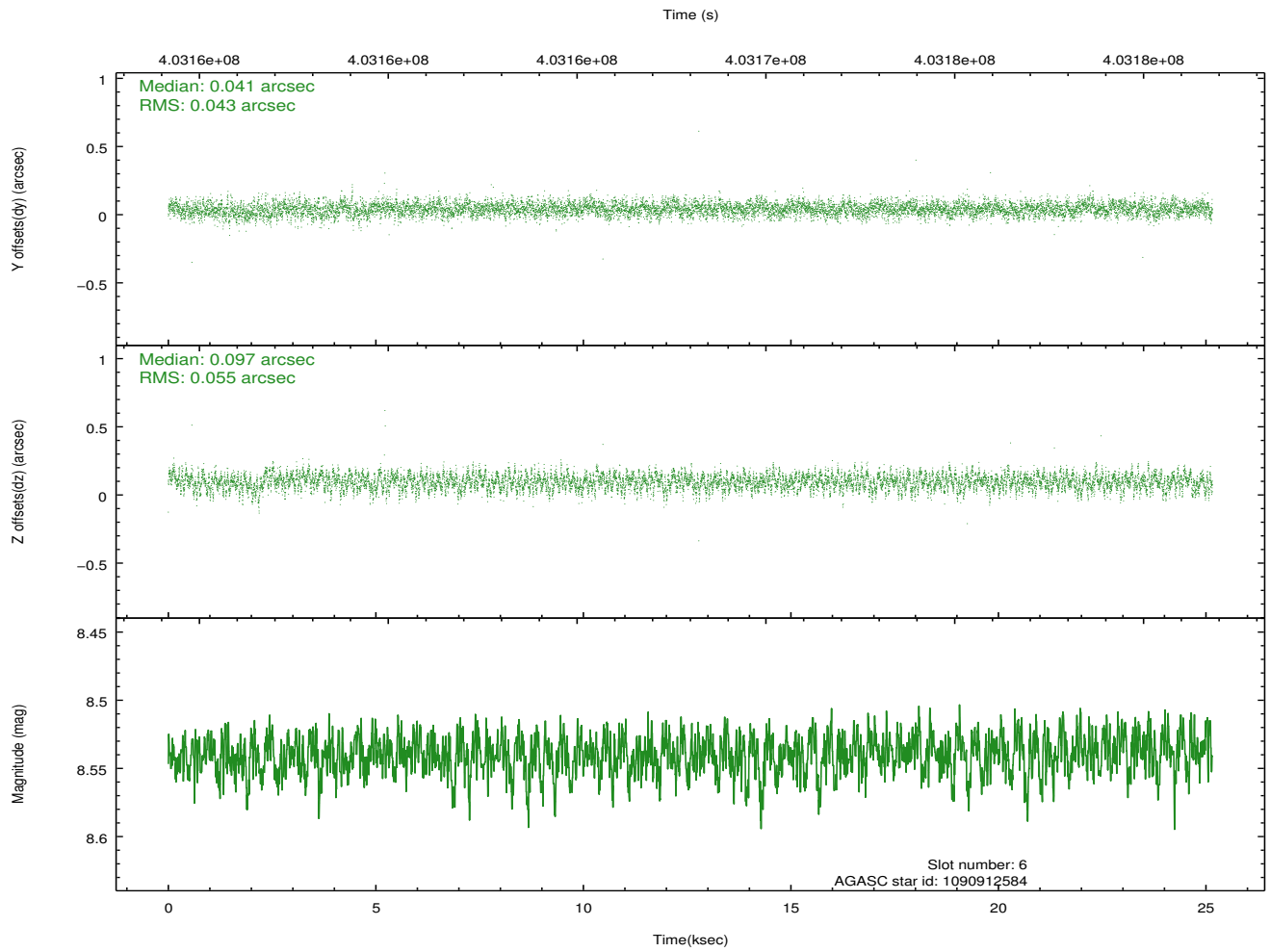
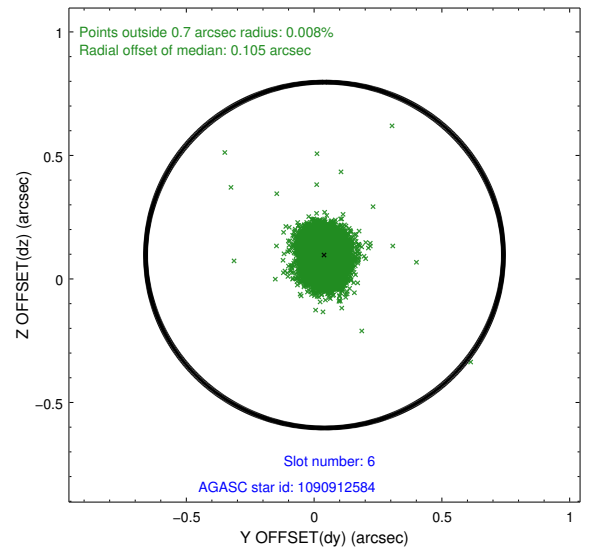
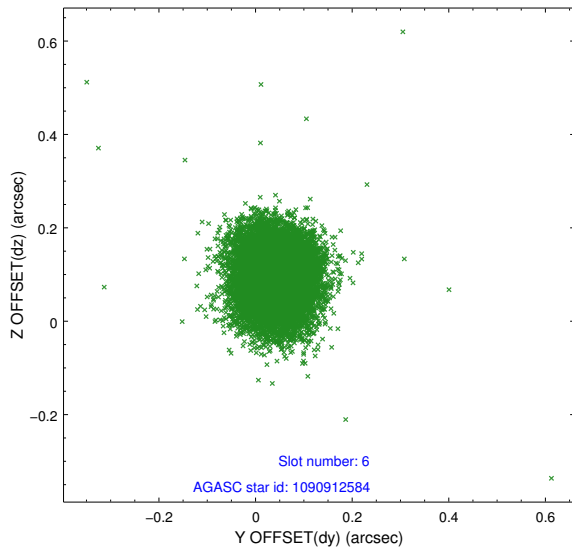
2.4.2 Slot 4



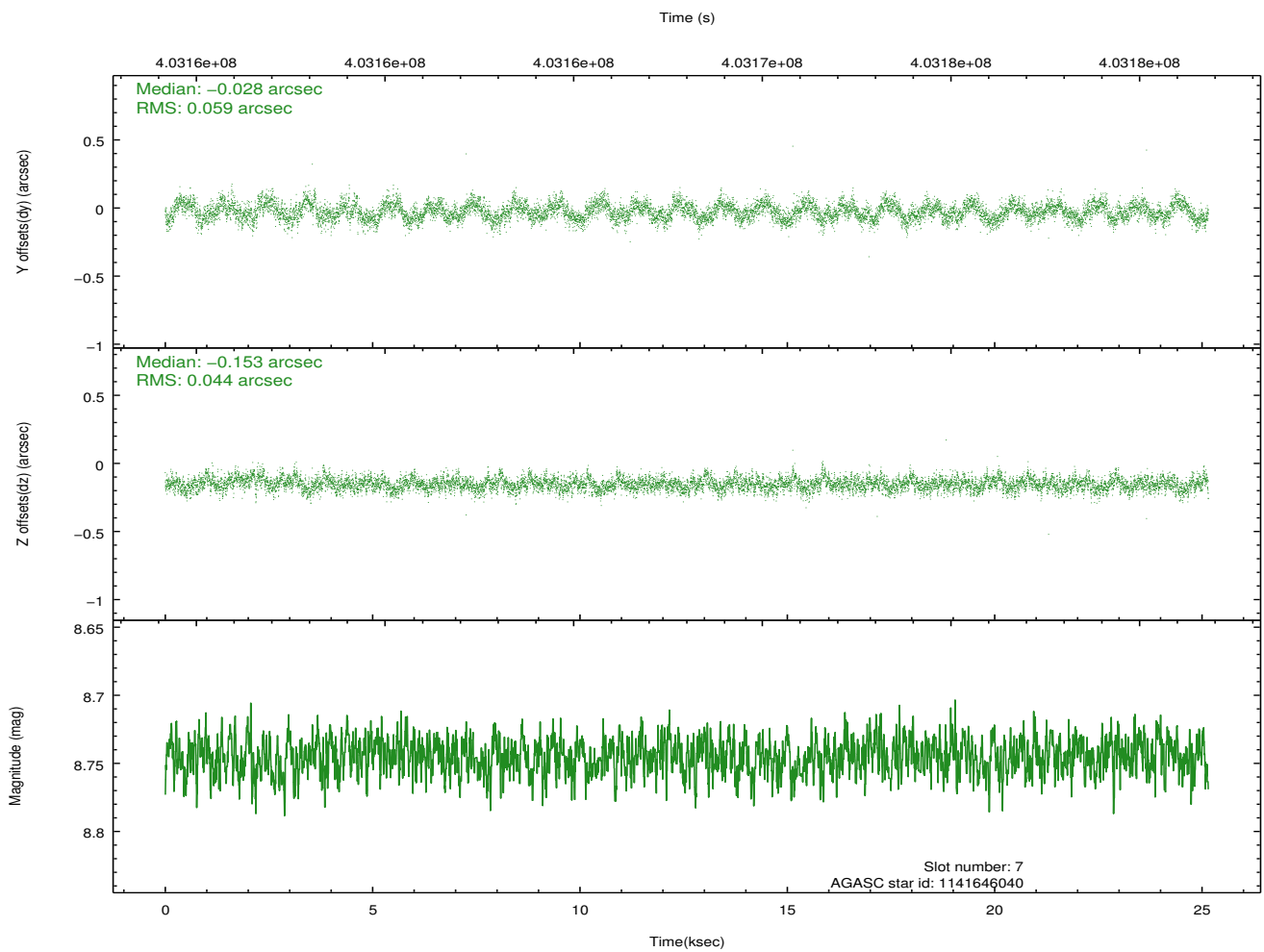
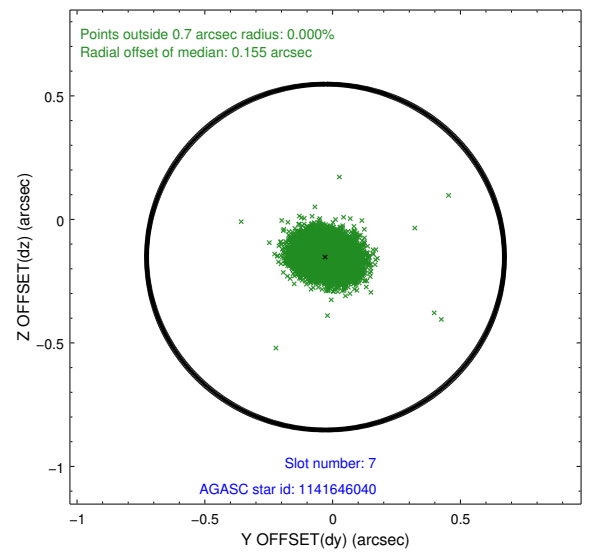
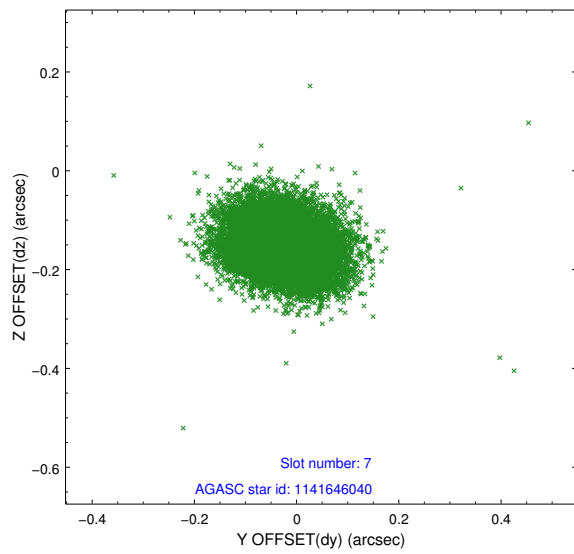
2.4.3 Slot 5



2.4.4 Slot 6

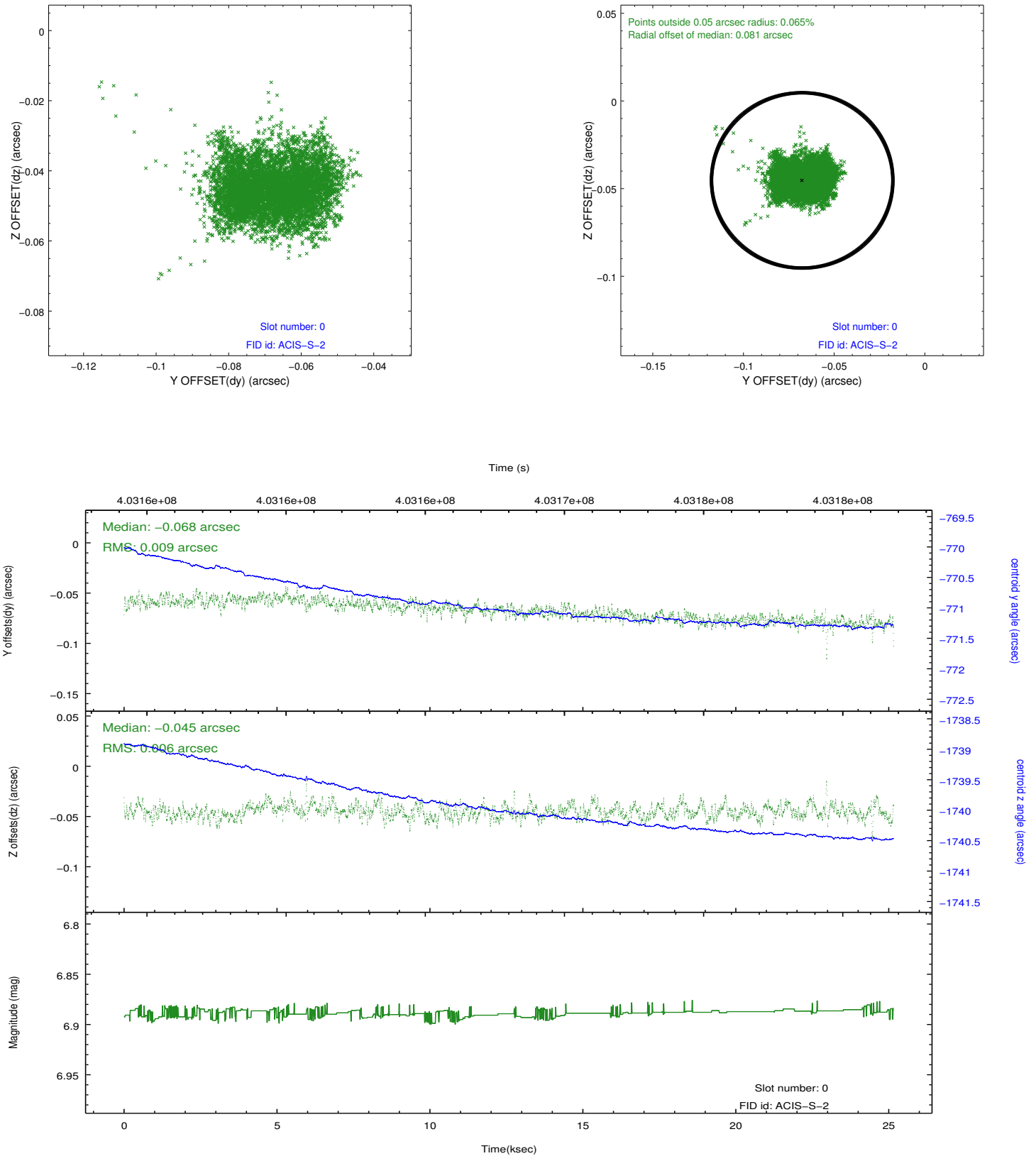


2.4.5 Slot 7

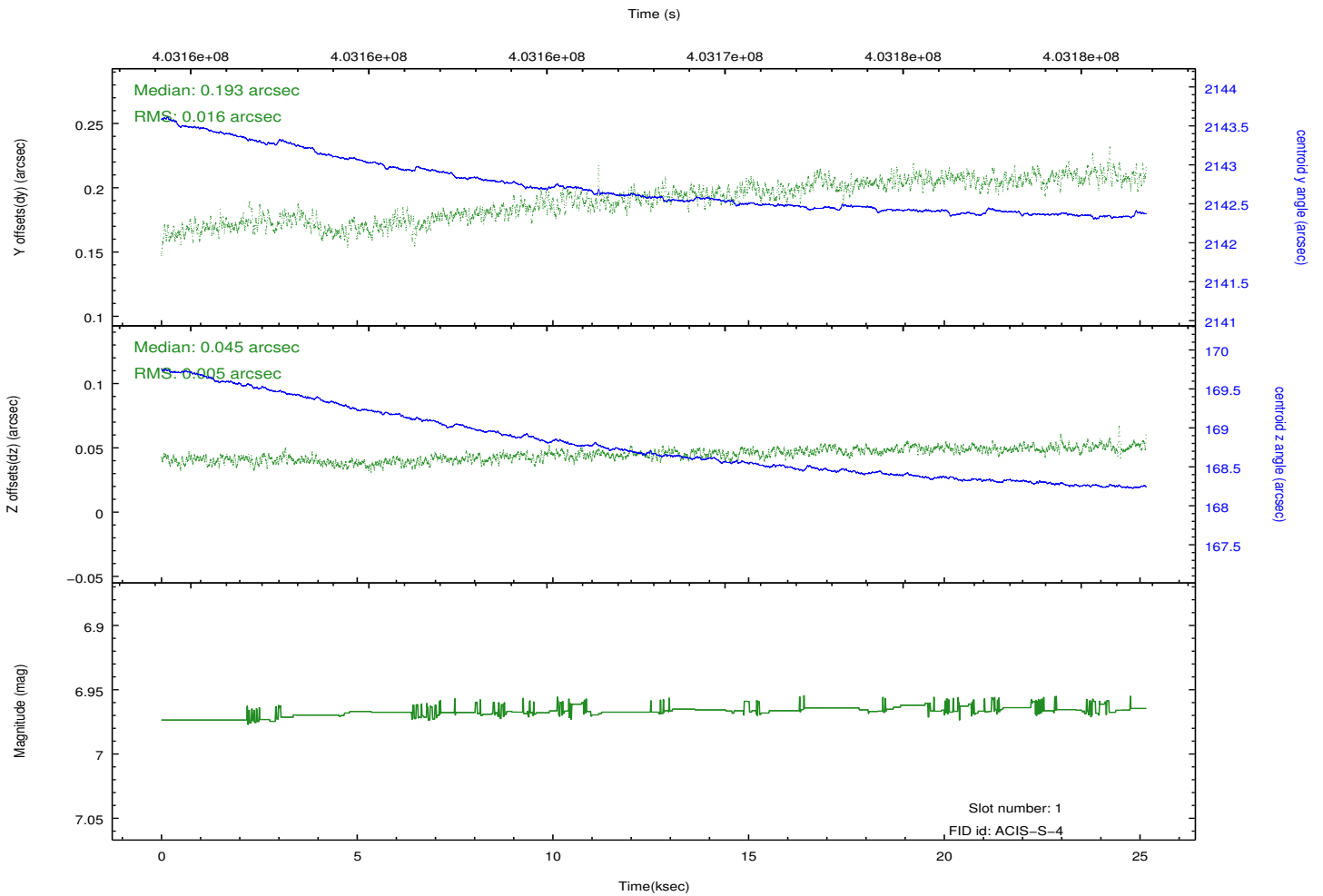
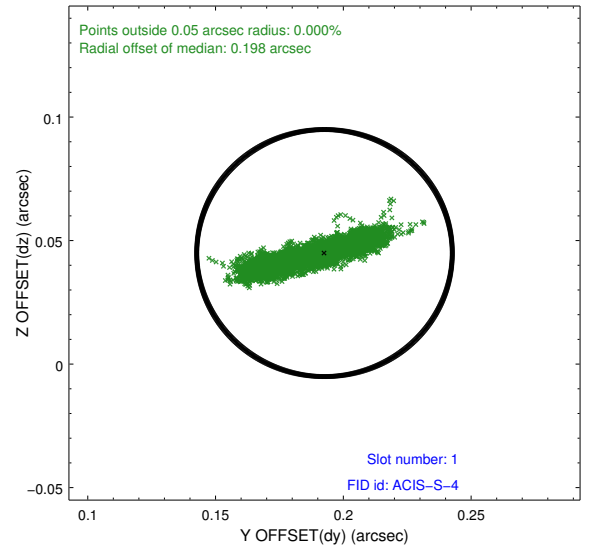
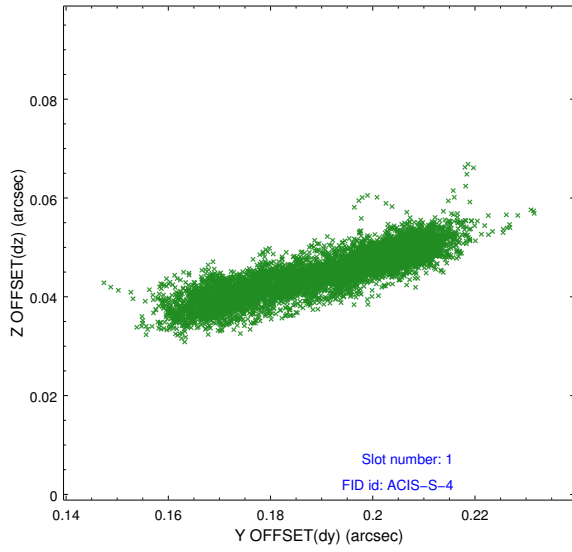


2.5 FID Slots

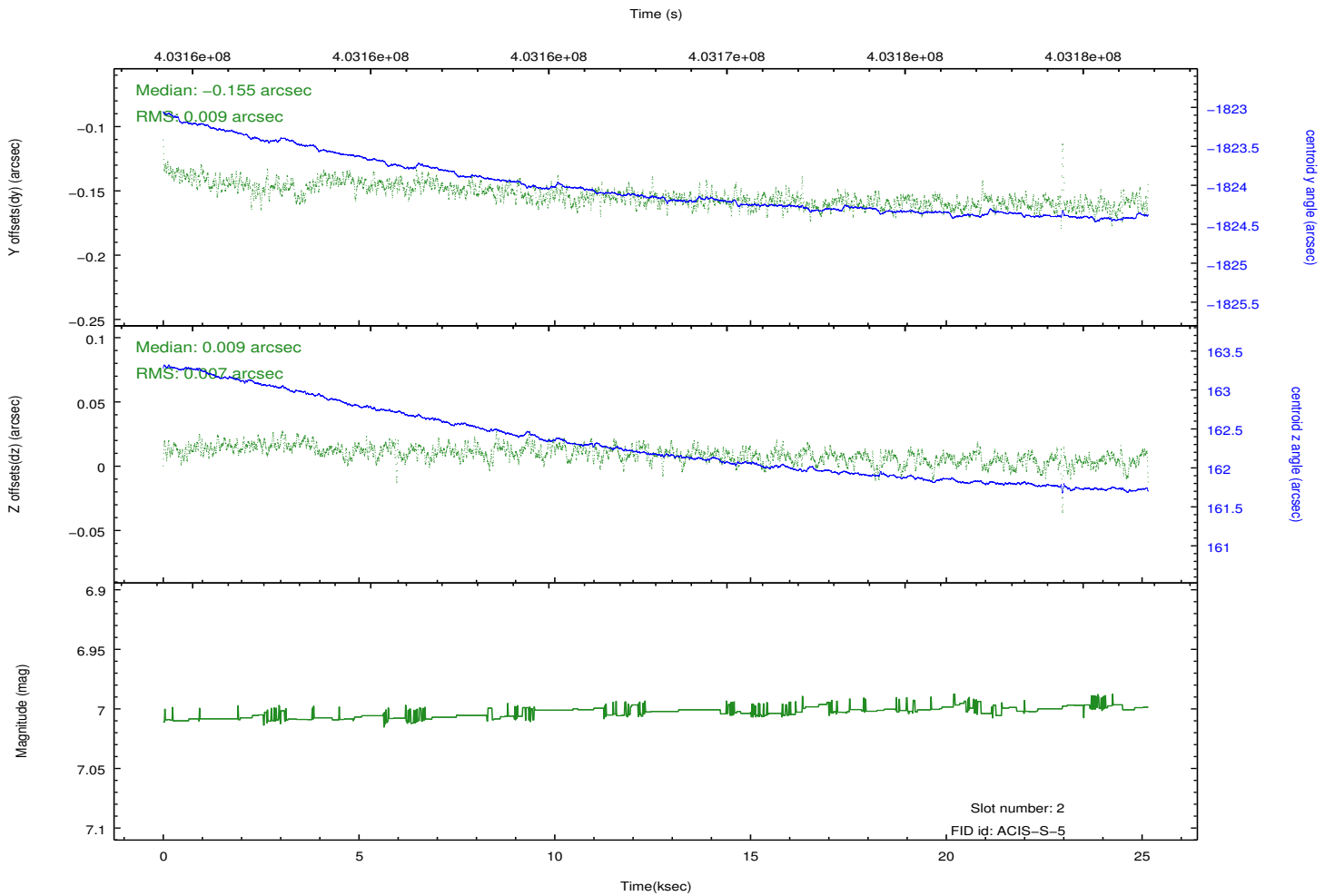
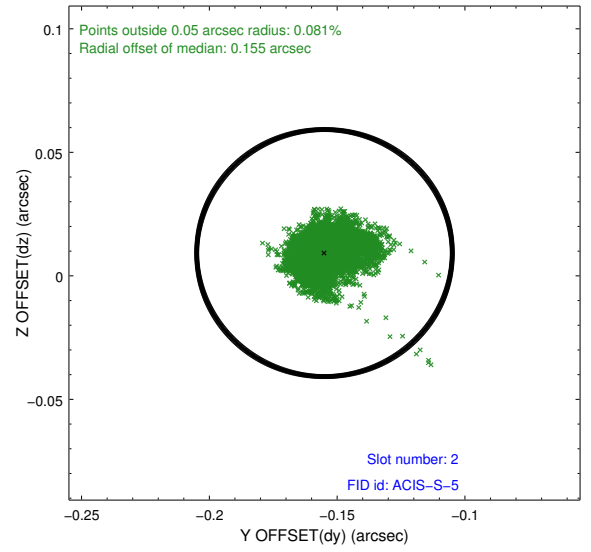
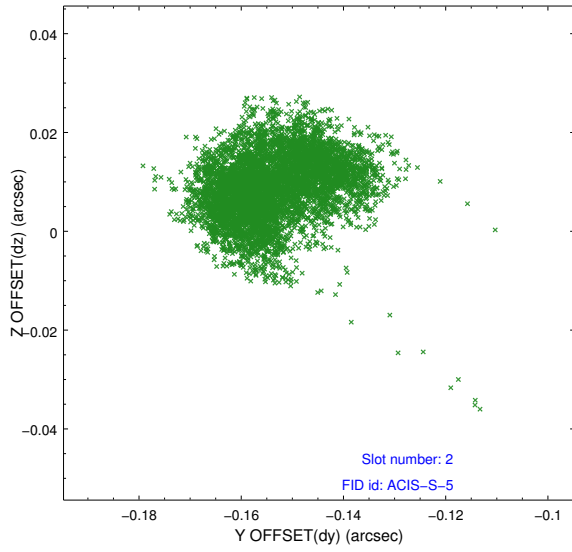
2.5.1 Slot 0



2.5.2 Slot 1



2.5.3 Slot 2



A Summary

A.1 Status

V&V Scientist	Beth Sundheim
V&V Date (YYYY-MM-DD)	2012.07.13
V&V Edition	1
V&V Disposition and Status	OK
V&V Charge Time	25.0641995731

A.2 Comments