

V&V Reference Report

L2 ASCDS Version : 8.4.3

Observation 12700 - L2 Version 2
Chandra X-Ray Center

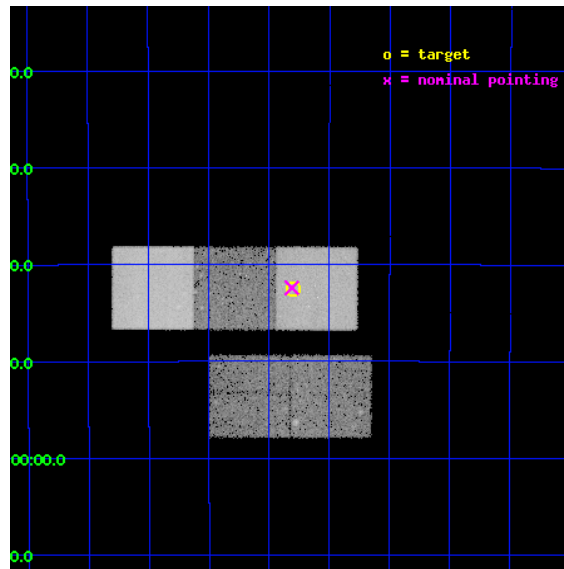
L2 Processing Date : Feb 26 2012

Contents

1	Front	2
2	OBI	3
2.1	OBI	3
2.1.1	Images	3
2.1.2	Bias	3
2.1.3	Parameters	4
2.1.4	Events	4
2.2	Compared Parameters	5
2.3	Aspect	6
2.4	Star Slots	9
2.4.1	Slot 3	9
2.4.2	Slot 4	10
2.4.3	Slot 5	11
2.4.4	Slot 6	12
2.4.5	Slot 7	13
2.5	FID Slots	14
2.5.1	Slot 0	14
2.5.2	Slot 1	15
2.5.3	Slot 2	16
A	Summary	17
A.1	Status	17
A.2	Comments	17

1 Front

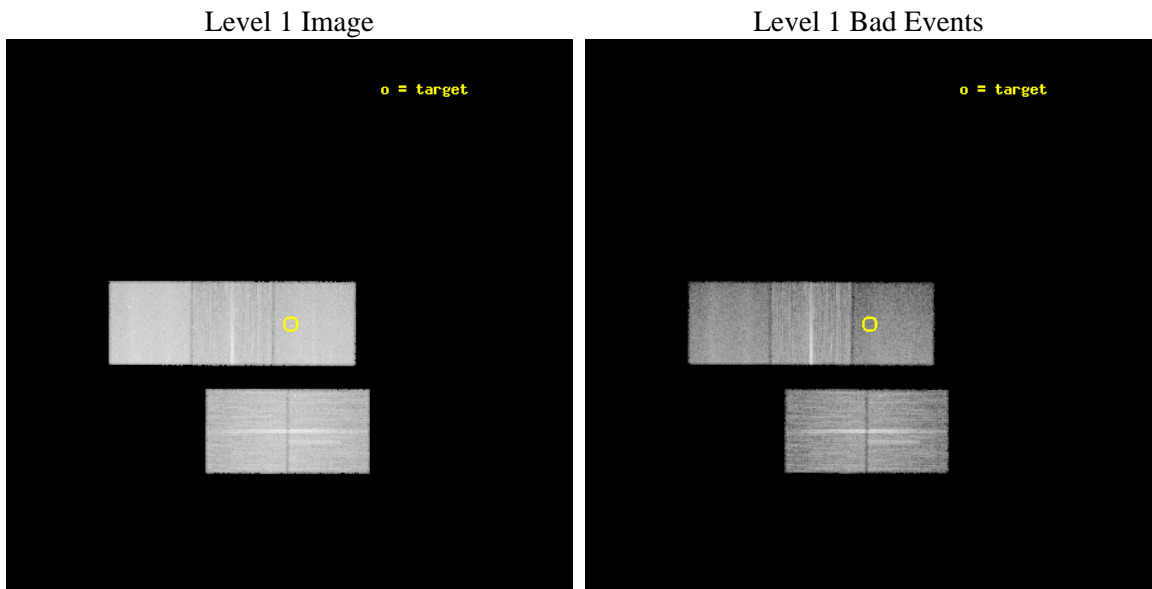
seq_num	501527	Sequence number
obs_id	12700	Observation id
title	SEARCH FOR JET BREAKS IN LONG GRB X-RAY AFTERGLOWS	Proposal title
observer	Prof. David Burrows	Principal investigator
object	GRB 111008A	Source name
dtcycle	0	
cycle	P	events from which exps? Prim/Second/Both
ra_targ	60.450917	Observer's specified target RA [deg]
dec_targ	-32.709472	Observer's specified target Dec [deg]
ra_nom	60.45282180359	Nominal RA [deg]
dec_nom	-32.706897640798	Nominal Dec [deg]
roll_nom	0.15765540998934	Nominal Roll [deg]
revision	2	Processing version of data
ontime	28544.658814013	Sum of GTIs [s]
livetime	28171.701832336	Livetime [s]
ontime2	28541.353633642	Sum of GTIs [s]
ontime3	28544.535694003	Sum of GTIs [s]
ontime5	28544.61777401	Sum of GTIs [s]
ontime6	28541.435743213	Sum of GTIs [s]
ontime7	28544.658814013	Sum of GTIs [s]
l2events	246504	Number of level 2 events



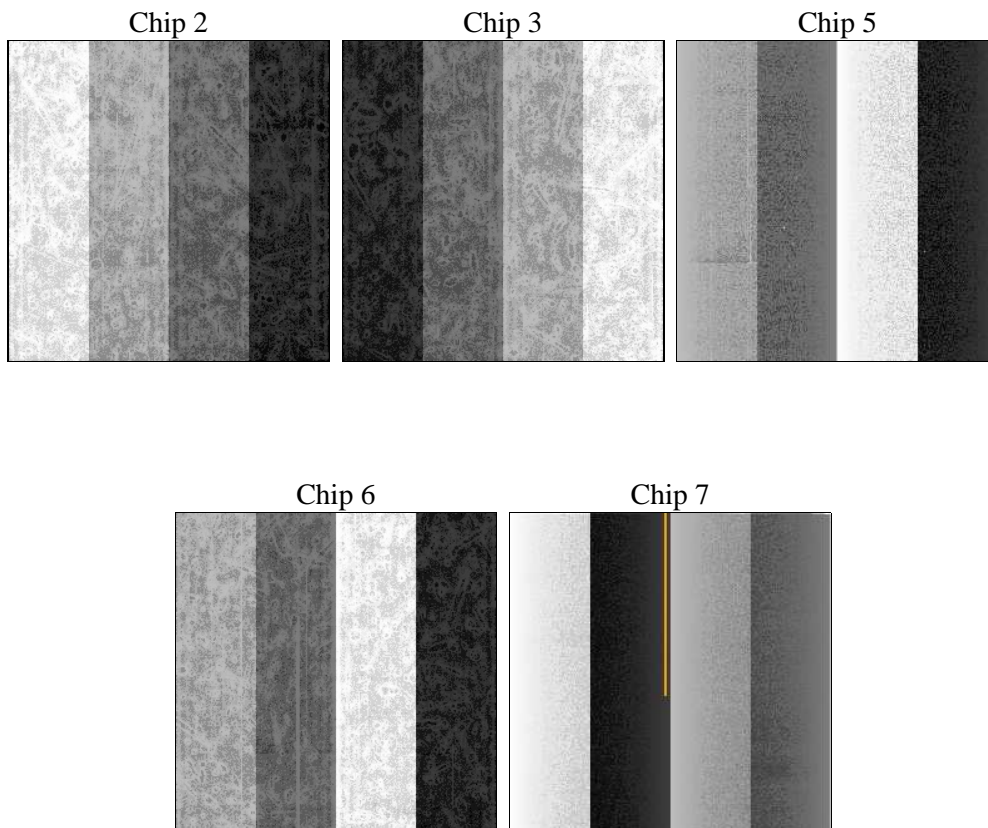
2 OBI

2.1 OBI

2.1.1 Images



2.1.2 Bias



2.1.3 Parameters

obi_num	0	Obi number	sched_exp_time	28500.000000	[s] Scheduled observation exposure time
ascdsver	8.4.3	Processing system revision	ontime	28544.658814013	Sum of GTIs [s]
caldbver	4.4.8	 	ontime2	28541.353633642	Sum of GTIs [s]
date	2012-02-26T17:18:09	Date and time of file creation	ontime3	28544.535694003	Sum of GTIs [s]
revision	2	Processing version of data	ontime5	28544.61777401	Sum of GTIs [s]
			ontime6	28541.435743213	Sum of GTIs [s]
			ontime7	28544.658814013	Sum of GTIs [s]
			l1events	906572	Number of level 1 events

2.1.4 Events

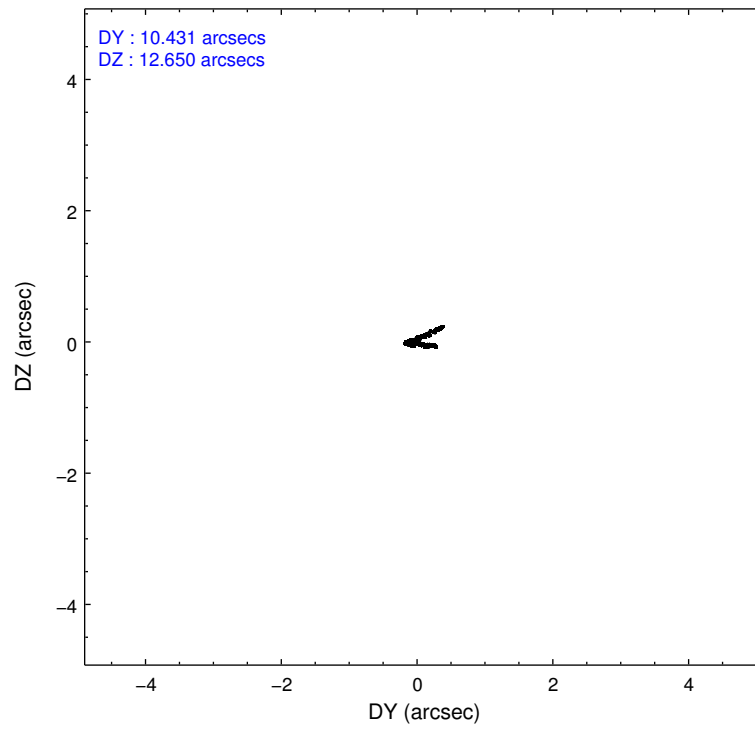
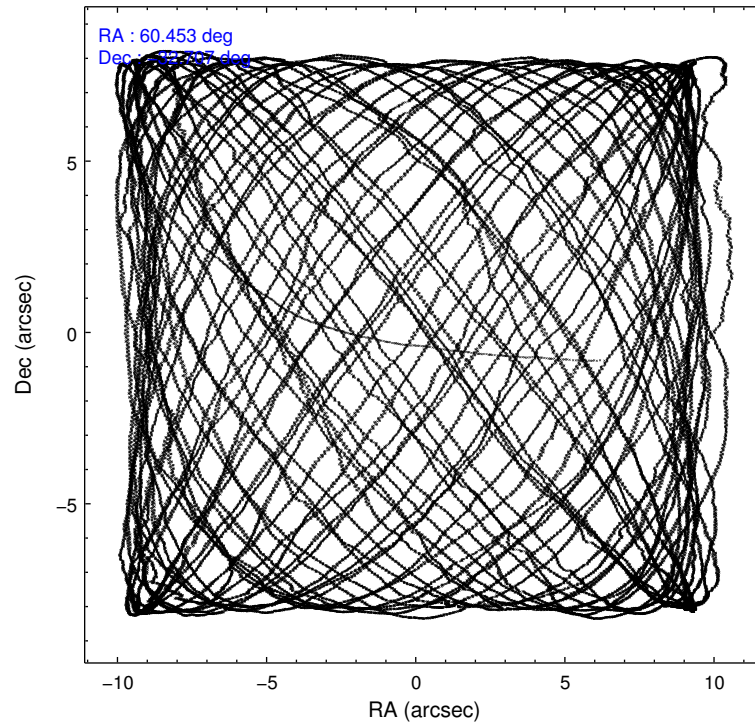
	ccd 2	ccd 3	ccd 5	ccd 6	ccd 7
level 1 events	162275	157625	232667	170478	183527
rejected events	144831	139687	114874	151434	96747
rejected %	89%	88%	49%	88%	52%

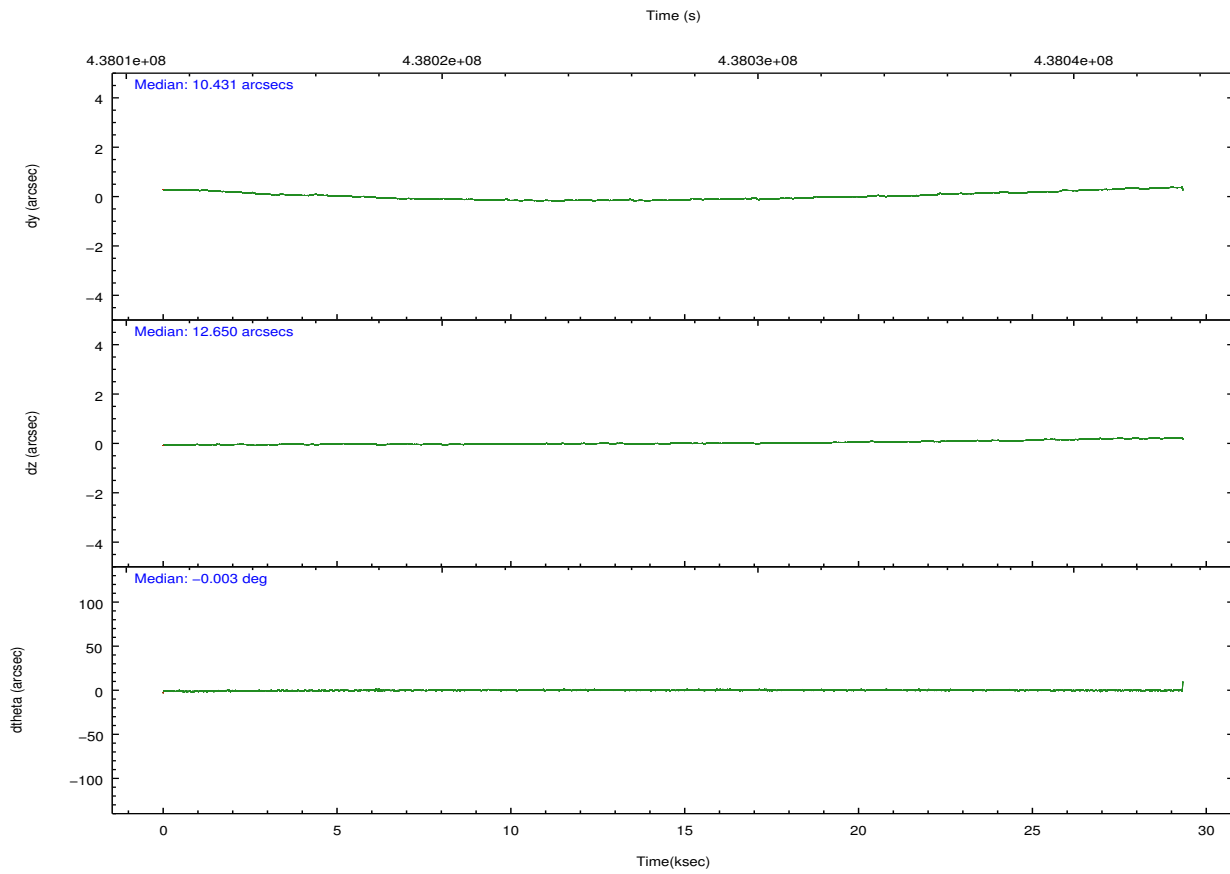
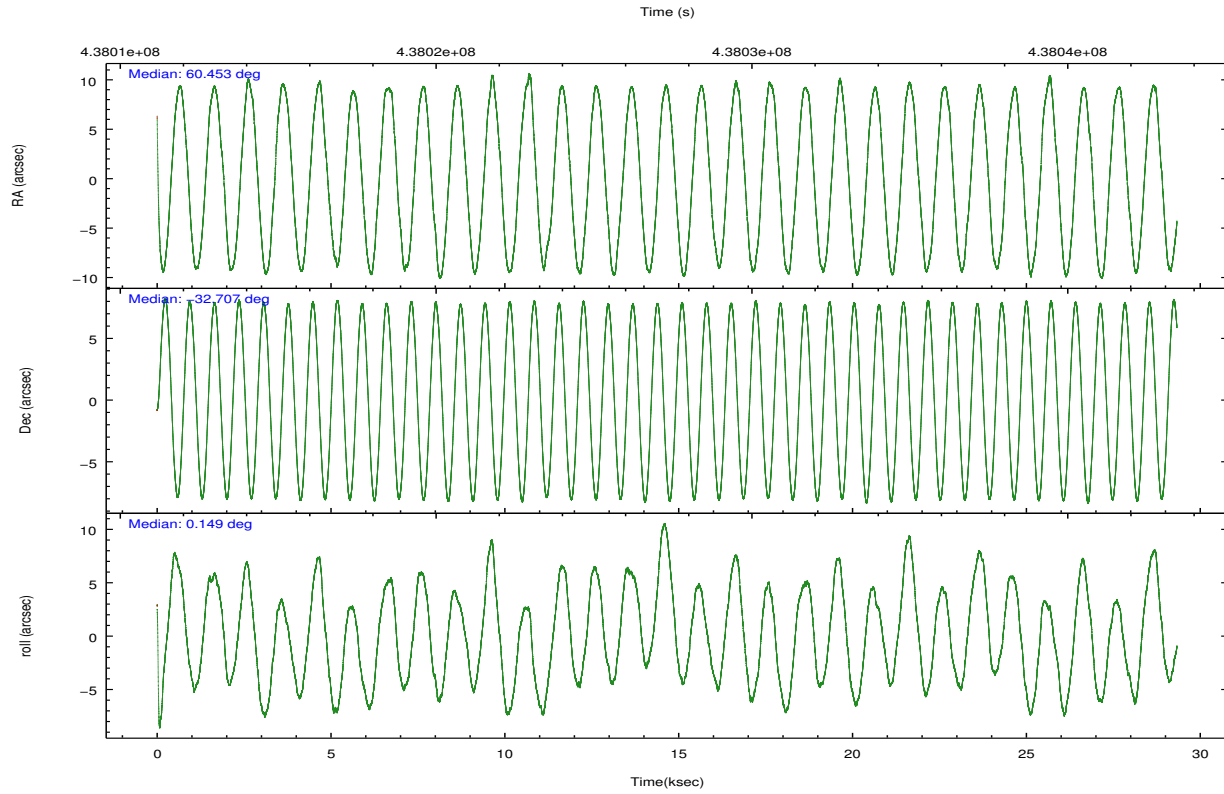
	ccd 2	ccd 3	ccd 5	ccd 6	ccd 7
grade 0 events	6438	6990	7755	6946	8512
	3%	4%	3%	4%	4%
grade 1 events	92	105	440	88	259
	0%	0%	0%	0%	0%
grade 2 events	4008	3871	36985	4181	18360
	2%	2%	15%	2%	10%
grade 3 events	1912	1887	4446	2038	7657
	1%	1%	1%	1%	4%
grade 4 events	1893	1856	4326	1891	7719
	1%	1%	1%	1%	4%
grade 5 events	5651	6839	17654	6687	19438
	3%	4%	7%	3%	10%
grade 6 events	3196	3339	64286	3988	44549
	1%	2%	27%	2%	24%
grade 7 events	139085	132738	96775	144659	77033
	85%	84%	41%	84%	41%

2.2 Compared Parameters

Parameter	Planned	Actual	Parameter	Planned	Actual
Instrument	ACIS	ACIS	Obspar format version number	7	7
Detector	ACIS-23567	ACIS-23567	Obspar file type	PREDICTED	ACTUAL
Grating	NONE	NONE	Obspar update status	NONE	UPDATED
Data mode	VFAINT	VFAINT	CCD I0 on	N	N
Observation mode	POINTING	POINTING	CCD I1 on	N	N
[deg] Pointing RA	60.424969	60.45282180359034	CCD I2 on	O2	Y
[deg] Pointing Dec	-32.720978	-32.70689764079794	CCD I3 on	O3	Y
[deg] Pointing Roll	359.985975	0.1576554099893353	CCD S0 on	N	N
[mm] SIM focus pos	-0.684267	-0.6828225247311905	CCD S1 on	O1	Y
[mm] SIM defocus	0	0.001444936568705701	CCD S2 on	O4	Y
[mm] SIM translation stage pos	-190.132523	-190.1400660498719	CCD S3 on	Y	Y
[mm] SIM translation stage offset	0	0.00754346686406393	CCD S4 on	N	N
[s] Observation start time (MET)	438013469.184000	438012096.26045	CCD S5 on	N	N
Observation start date	2011-11-18T14:23:23	2011-11-18T14:01:36	Number of optional ACIS chips dropped	0	0
[s] Observation end time (MET)	438041969.184000	438043107.63708	On-chip summing requested	N	N
Observation end date	2011-11-18T22:18:23	2011-11-18T22:38:27	Subarray requested	NONE	NONE
Read mode	TIMED	TIMED	Alternating exposures requested	N	N
			[s] Primary exposure time	0.000000	3.1

2.3 Aspect



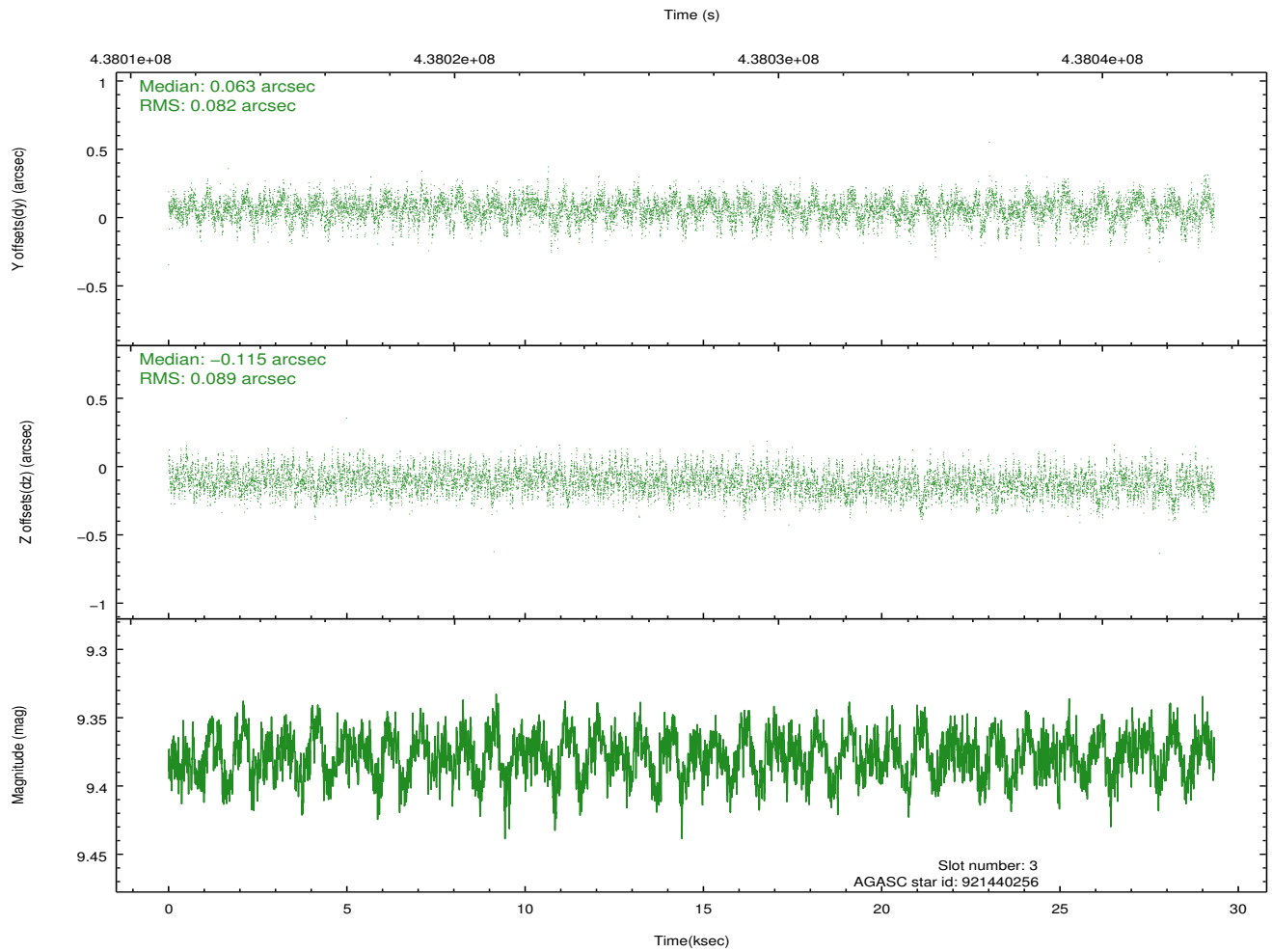
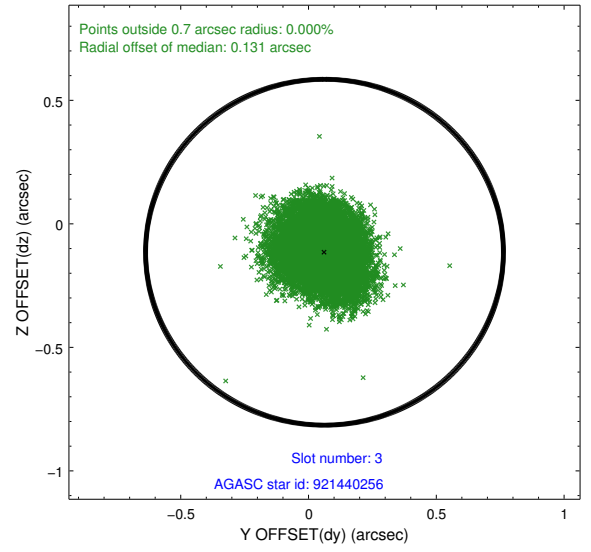
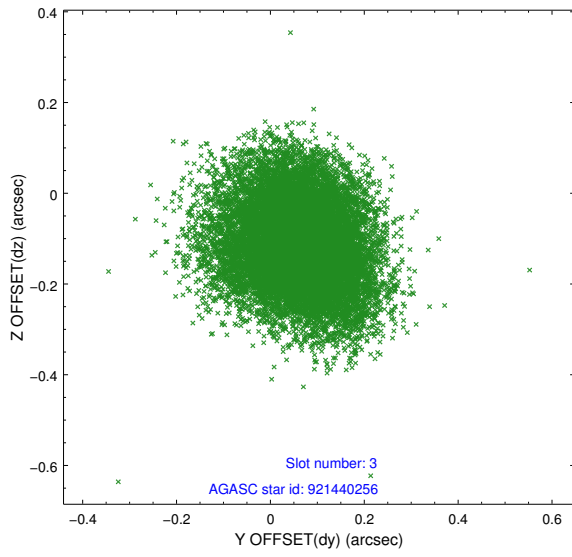


Slot Statistics

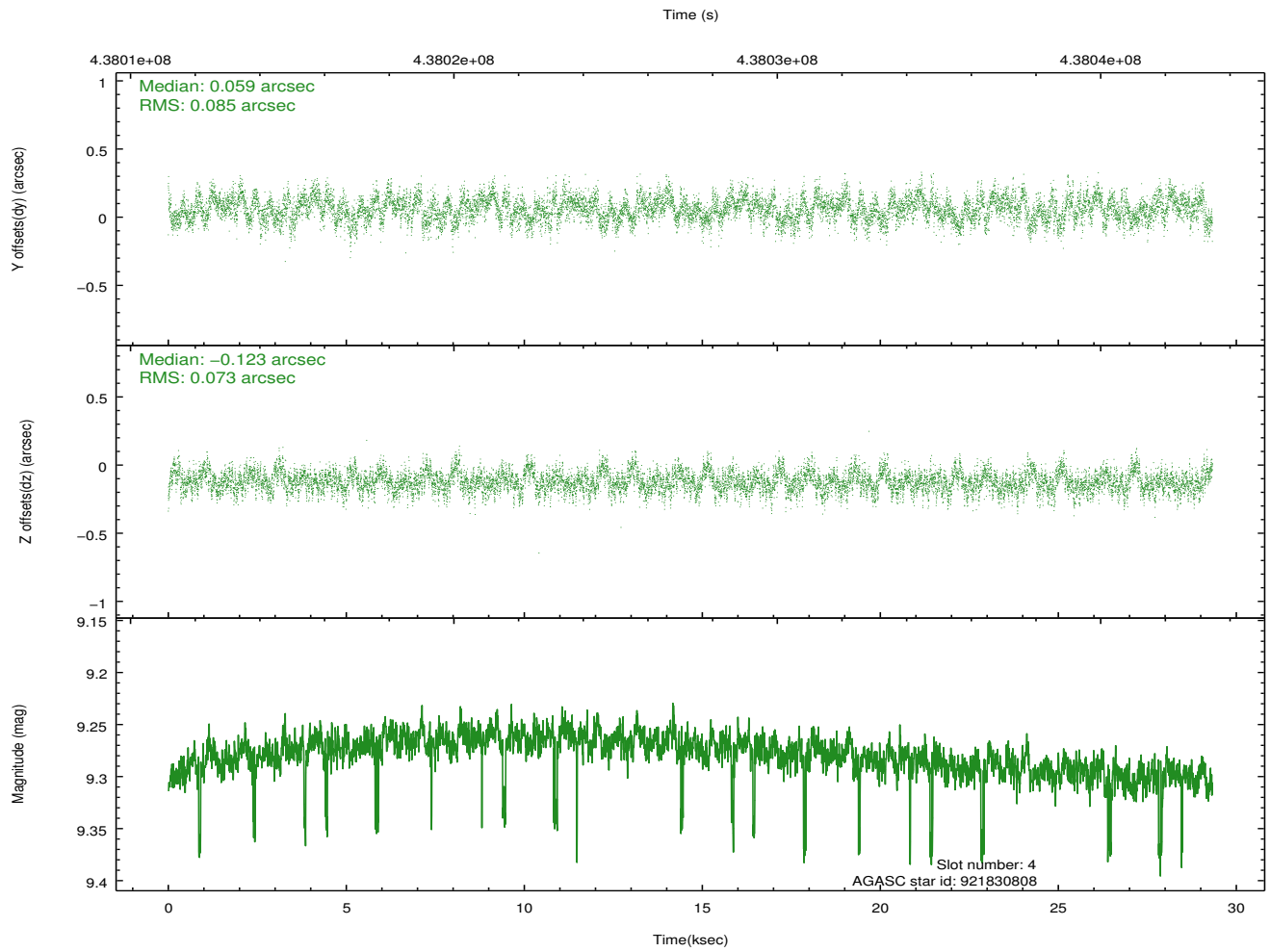
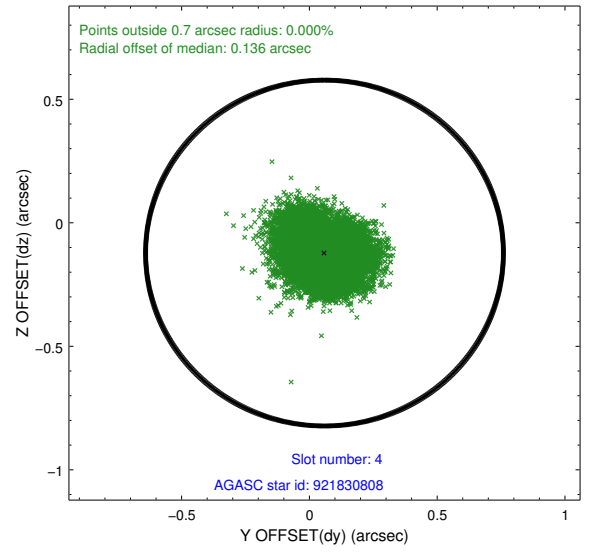
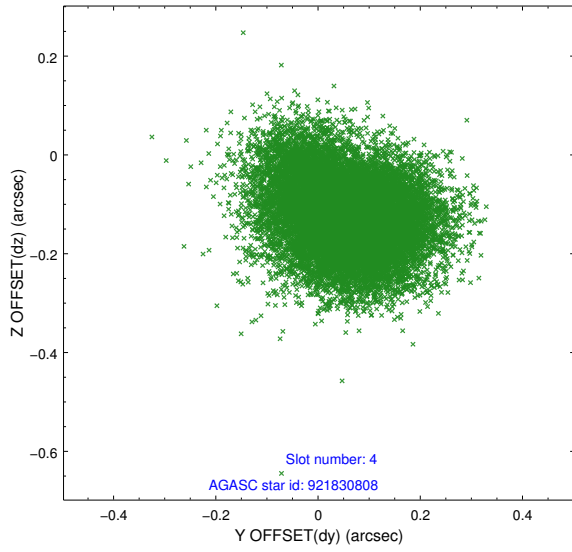
slot	status	id	mag	n_pts	med_dy	med_dz	dr1	dr2	ra	dec	mean_y	mean_z
0	FID	ACIS-S-2	7.00	7153	-0.051	-0.052	0.008	0.014	0.000000	0.000000	-763.40	-1734.03
1	FID	ACIS-S-4	7.09	7154	0.200	0.039	0.010	0.016	0.000000	0.000000	2150.14	174.40
2	FID	ACIS-S-5	7.12	7152	-0.180	0.022	0.010	0.016	0.000000	0.000000	-1816.23	168.23
3	GUIDE	921440256	9.38	14299	0.063	-0.115	0.129	0.209	60.293712	-32.073324	-401.40	2330.73
4	GUIDE	921830808	9.28	14233	0.059	-0.123	0.120	0.194	60.276185	-32.589442	-450.98	473.55
5	GUIDE	921830816	9.28	14286	0.014	0.100	0.128	0.204	60.304216	-32.967704	-364.16	-888.18
6	GUIDE	921833400	9.02	14303	0.013	0.068	0.102	0.171	60.219654	-33.055948	-618.82	-1206.48
7	GUIDE	921313800	9.45	14293	-0.143	0.064	0.161	0.244	59.659209	-32.210928	-2333.19	1827.20

2.4 Star Slots

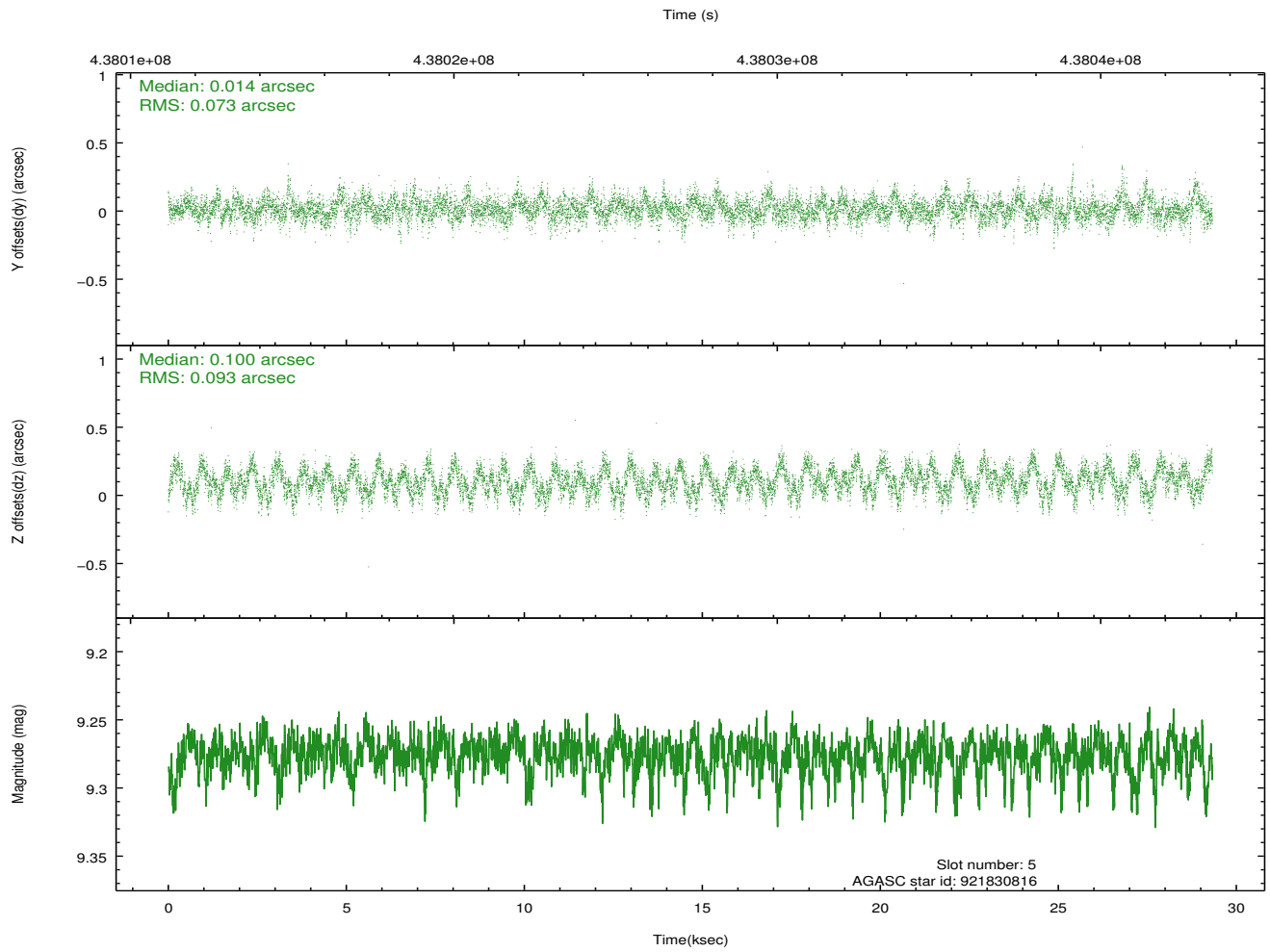
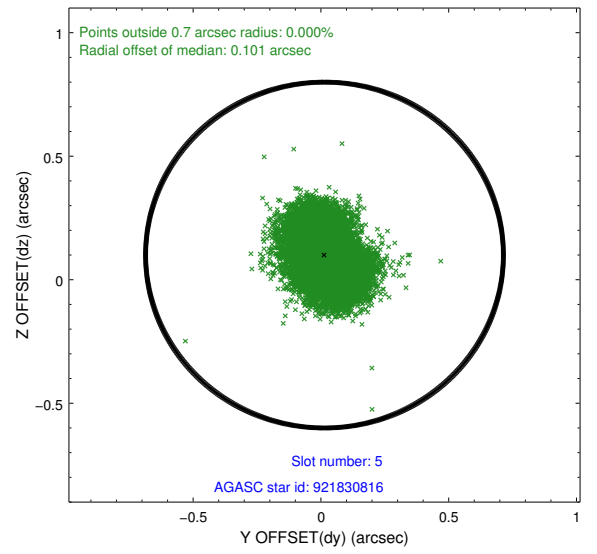
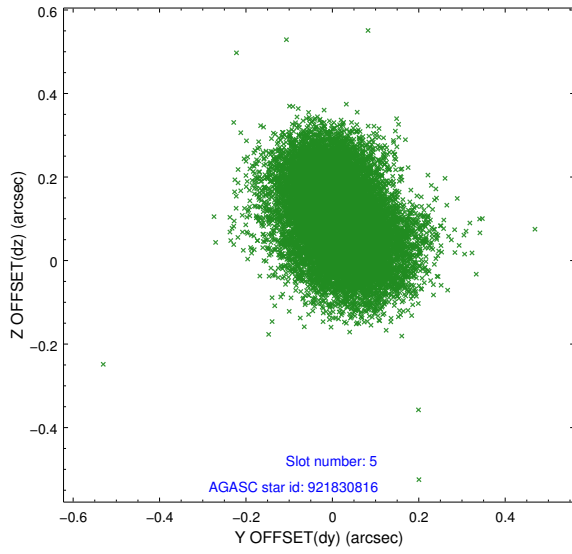
2.4.1 Slot 3



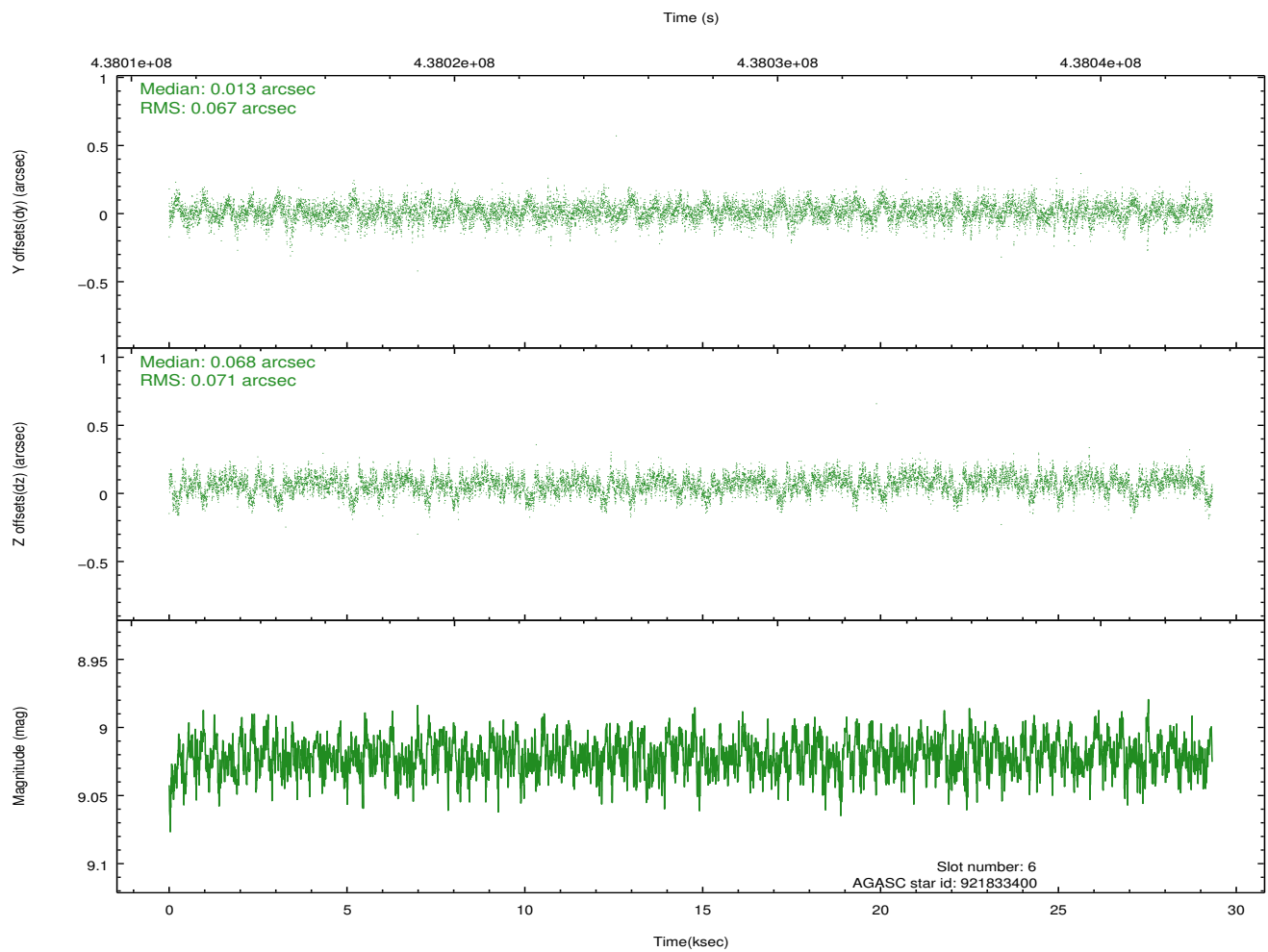
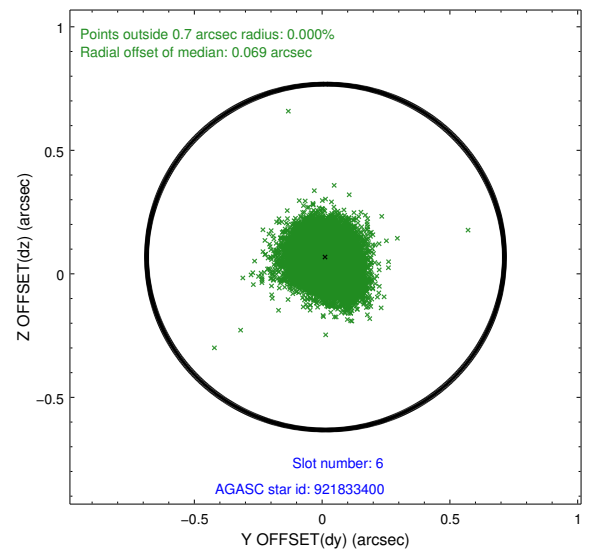
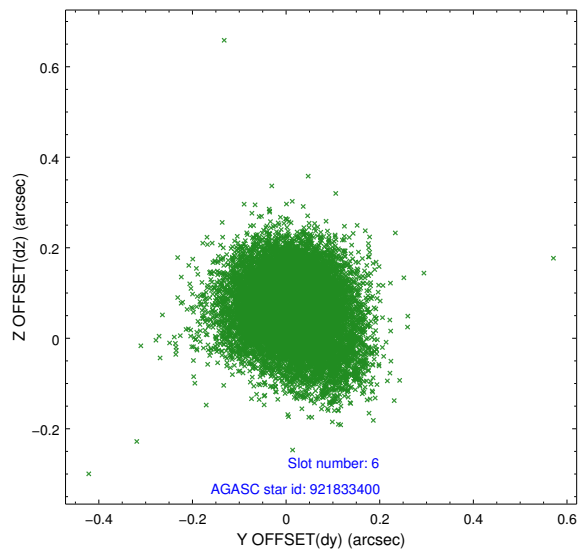
2.4.2 Slot 4



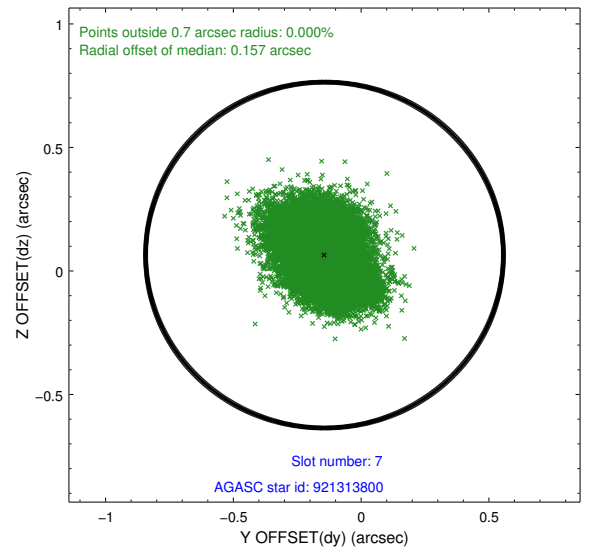
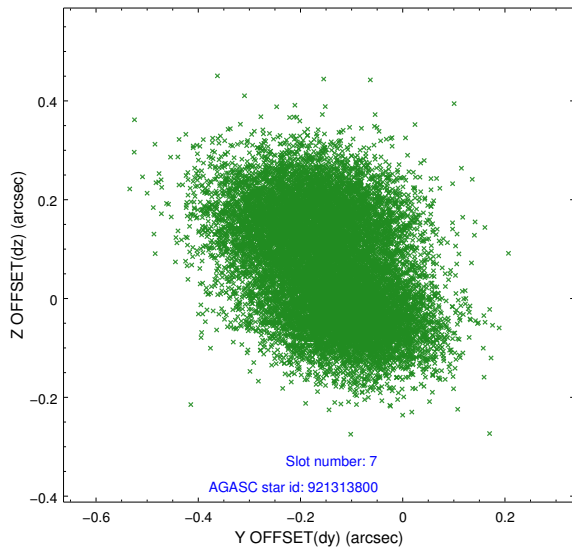
2.4.3 Slot 5



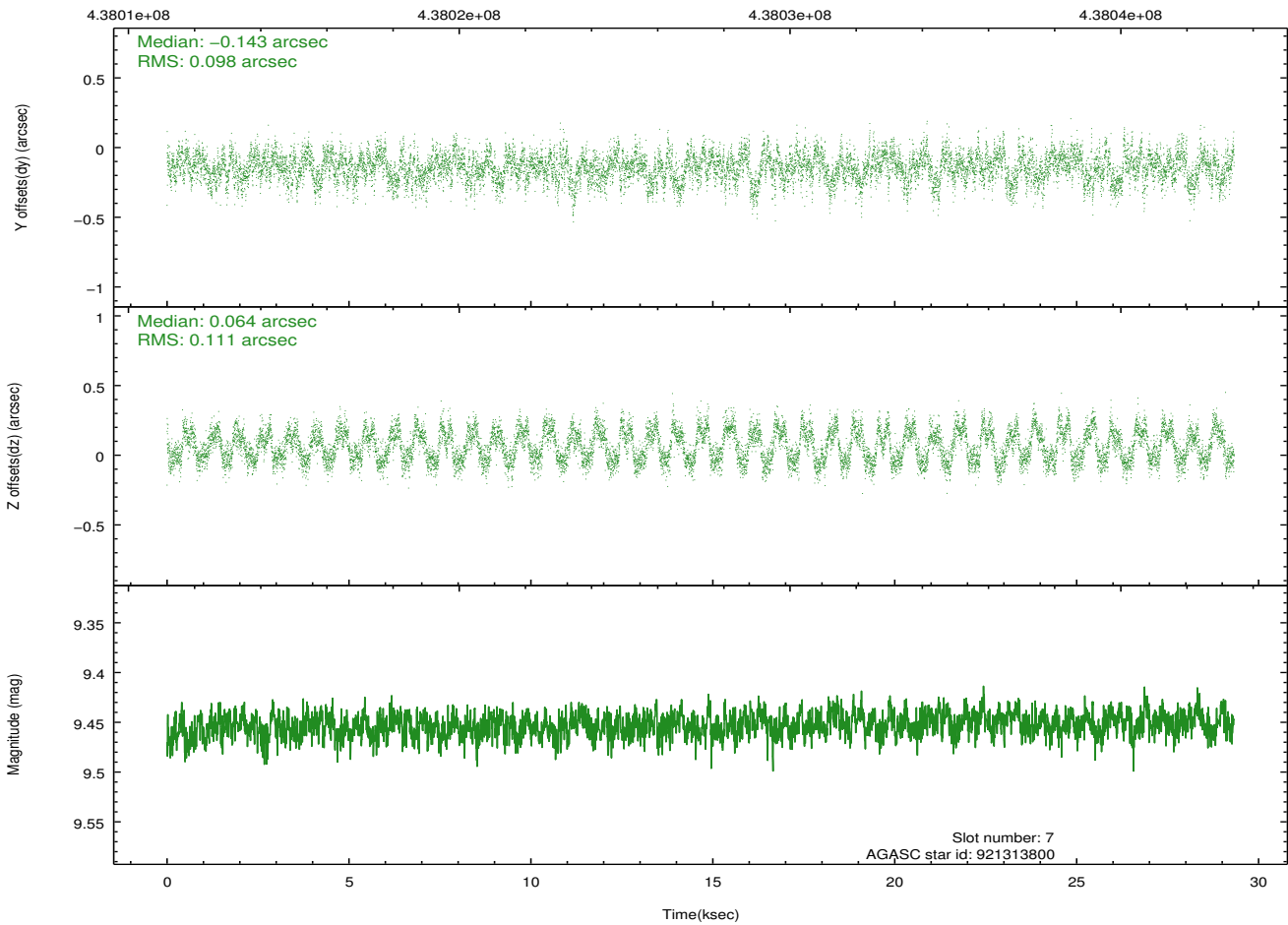
2.4.4 Slot 6



2.4.5 Slot 7

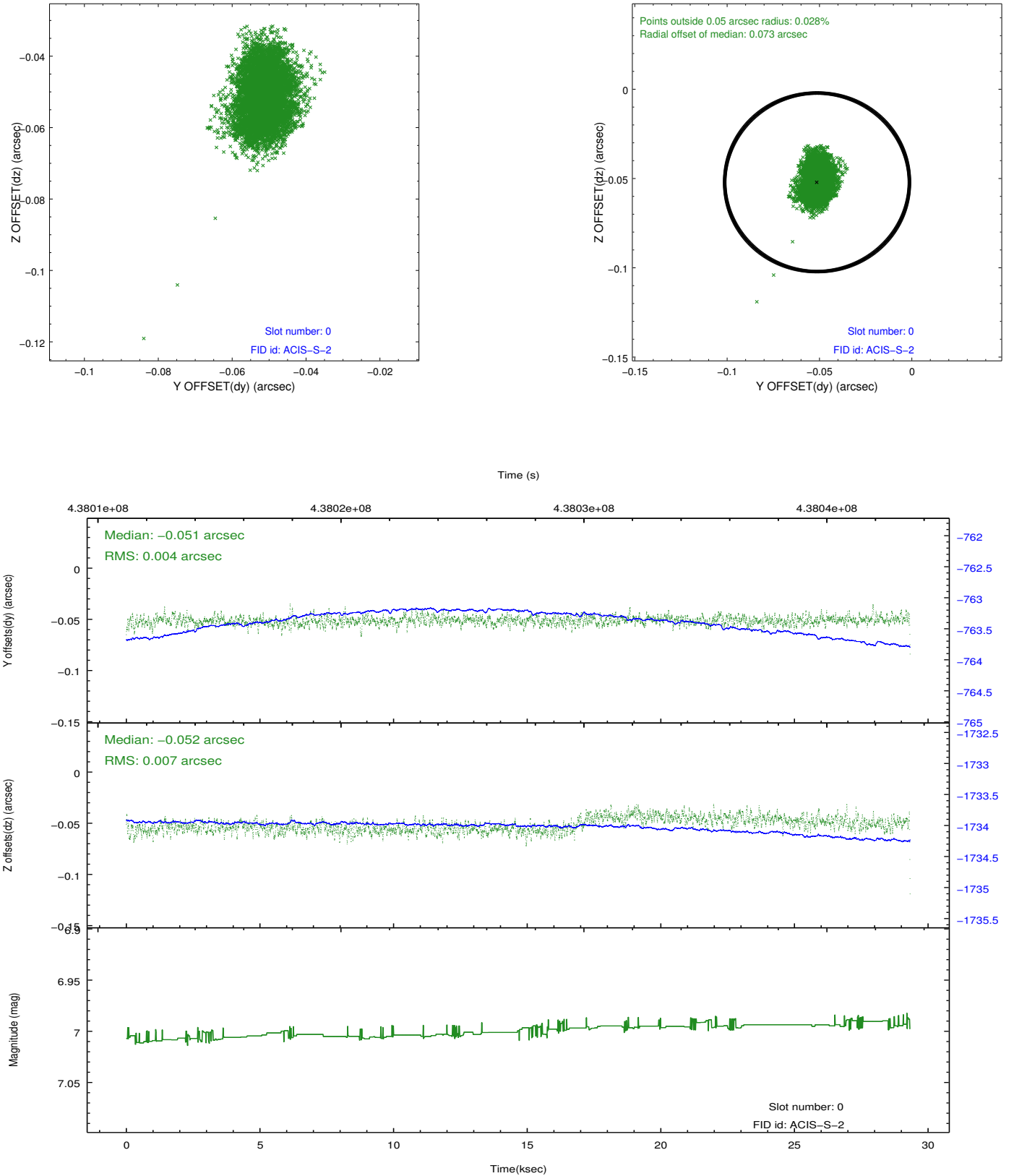


Time (s)

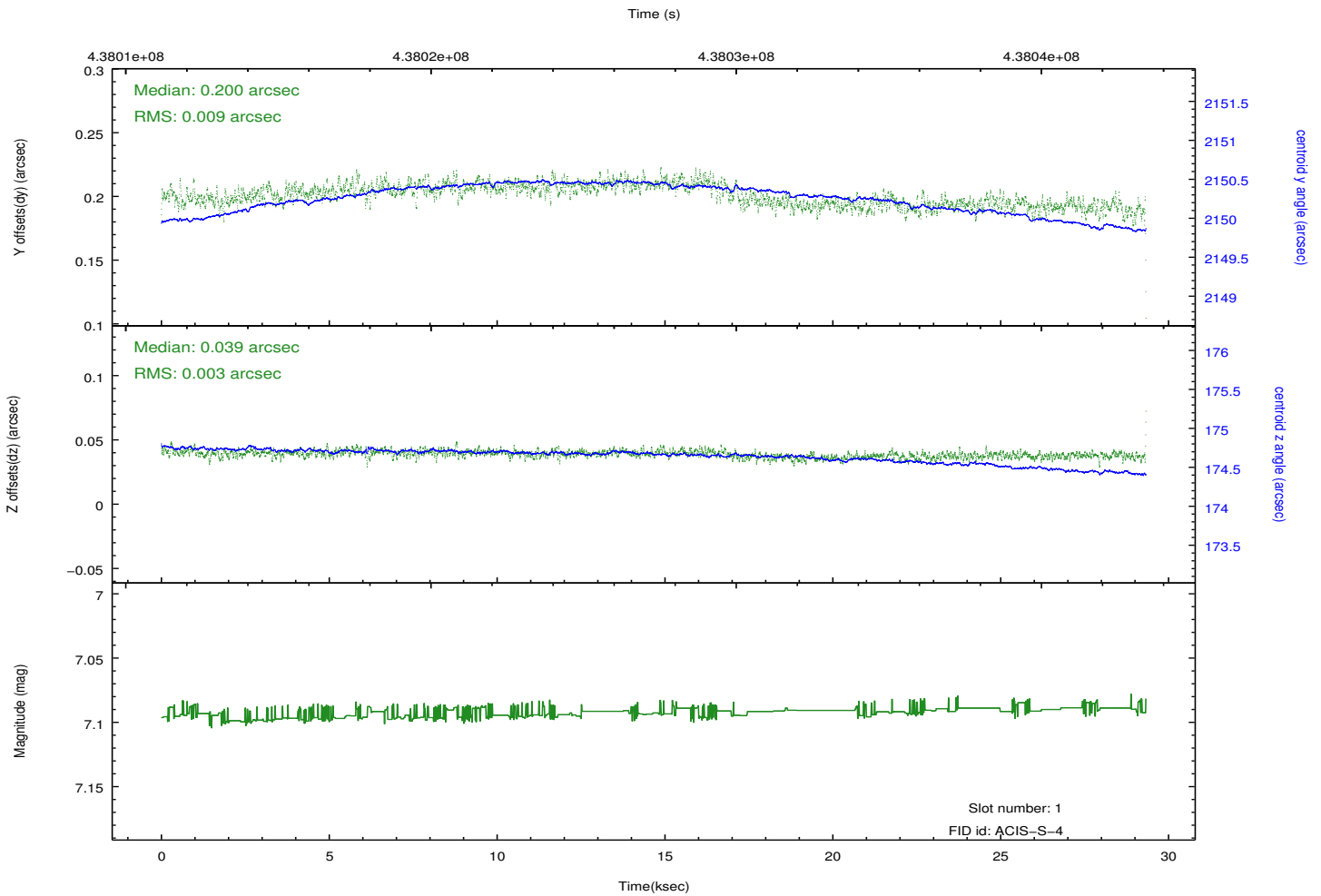
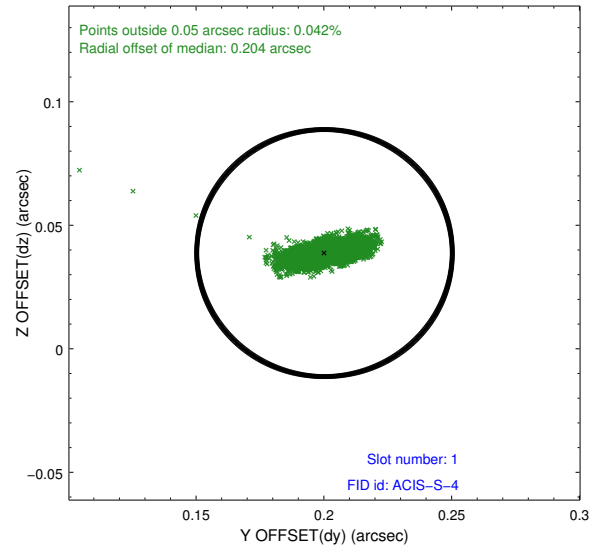
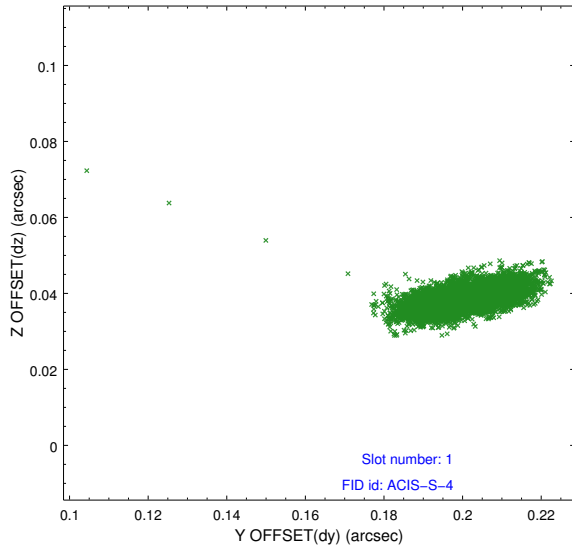


2.5 FID Slots

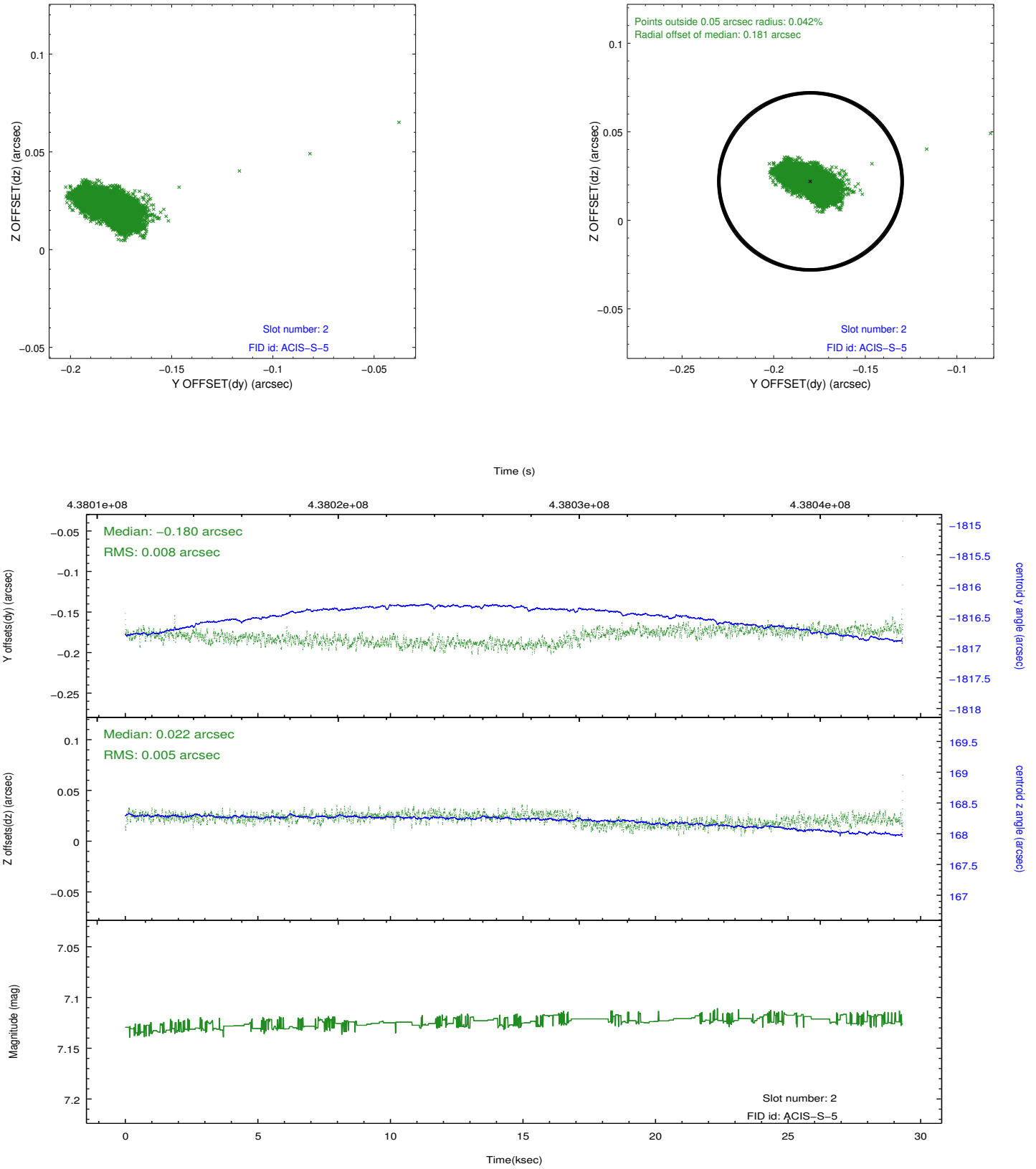
2.5.1 Slot 0



2.5.2 Slot 1



2.5.3 Slot 2



A Summary

A.1 Status

V&V Scientist	Jen Lauer
V&V Date (YYYY-MM-DD)	2012.02.28
V&V Edition	1
V&V Disposition and Status	OK
V&V Charge Time	28.544658814907

A.2 Comments