

V&V Reference Report

L2 ASCDS Version : 8.4.5

Observation 13090 - L2 Version 2
Chandra X-Ray Center

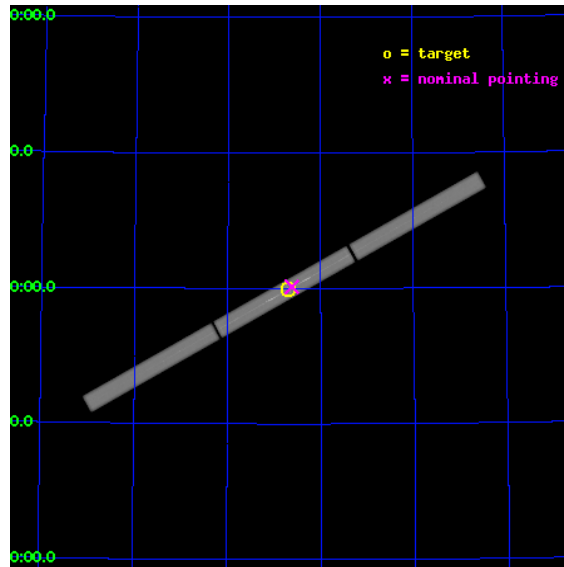
L2 Processing Date : Jul 7 2012

Contents

1	Front	2
2	OBI	3
2.1	OBI	3
2.1.1	Images	3
2.1.2	Parameters	4
2.1.3	Events	4
2.2	Compared Parameters	5
2.3	Aspect	6
2.4	Star Slots	9
2.4.1	Slot 3	9
2.4.2	Slot 4	10
2.4.3	Slot 5	11
2.4.4	Slot 6	12
2.4.5	Slot 7	13
2.5	FID Slots	14
2.5.1	Slot 0	14
2.5.2	Slot 1	15
2.5.3	Slot 2	16
3	Gratings	17
3.1	LETG Arm	17
A	Summary	19
A.1	Status	19
A.2	Comments	19

1 Front

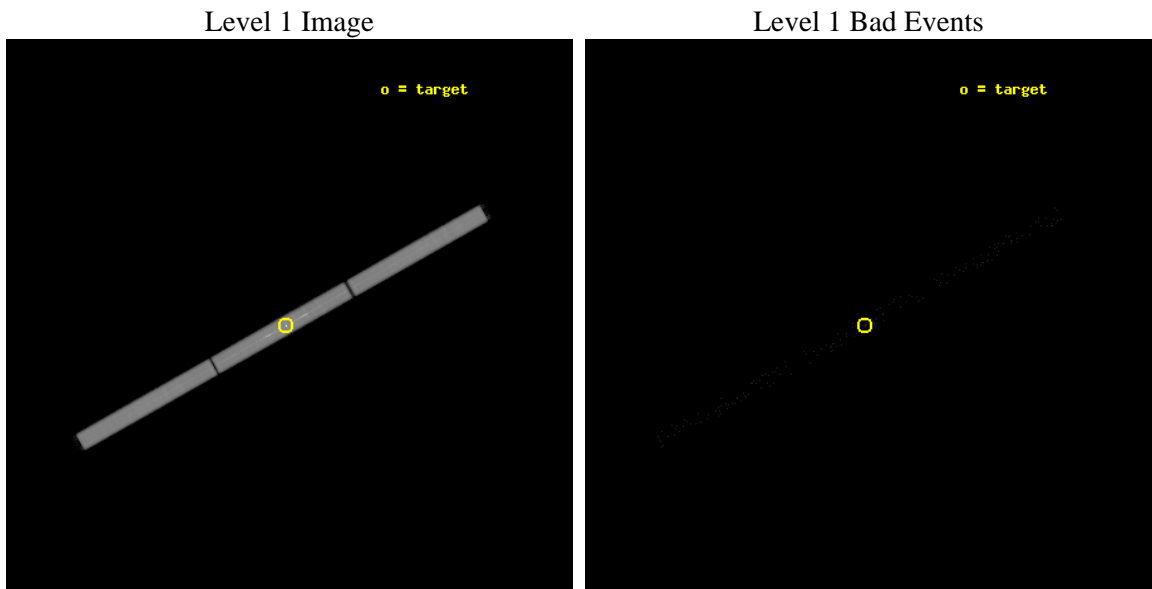
seq_num	291009	Sequence number
obs_id	13090	Observation id
title	AO-12 Calibration Observations of Capella	Proposal title
observer	Dr. CXC Calibration	Principal investigator
object	Capella	Source name
ra_targ	79.17625	Observer's specified target RA [deg]
dec_targ	45.997889	Observer's specified target Dec [deg]
ra_nom	79.154648527313	Nominal RA [deg]
dec_nom	46.006472277709	Nominal Dec [deg]
roll_nom	150.59167847665	Nominal Roll [deg]
revision	2	Processing version of data
ontime	30182.920305729	[s]
livetime	29894.885544426	Overtime multiplied by DTCOR
l2events	2511413	Number of level 2 events



2 OBI

2.1 OBI

2.1.1 Images



2.1.2 Parameters

obi_num	0	Obi number	sched_exp_time	30000.000000	[s] Scheduled observation exposure time
ascdsver	8.4.5	Processing system revision	ontime	30182.920305729	[s]
caldbver	4.5.0	 	l1events	3219726	Number of level 1 events
date	2012-07-07T17:29:46	Date and time of file creation			
revision	2	Processing version of data			

2.1.3 Events

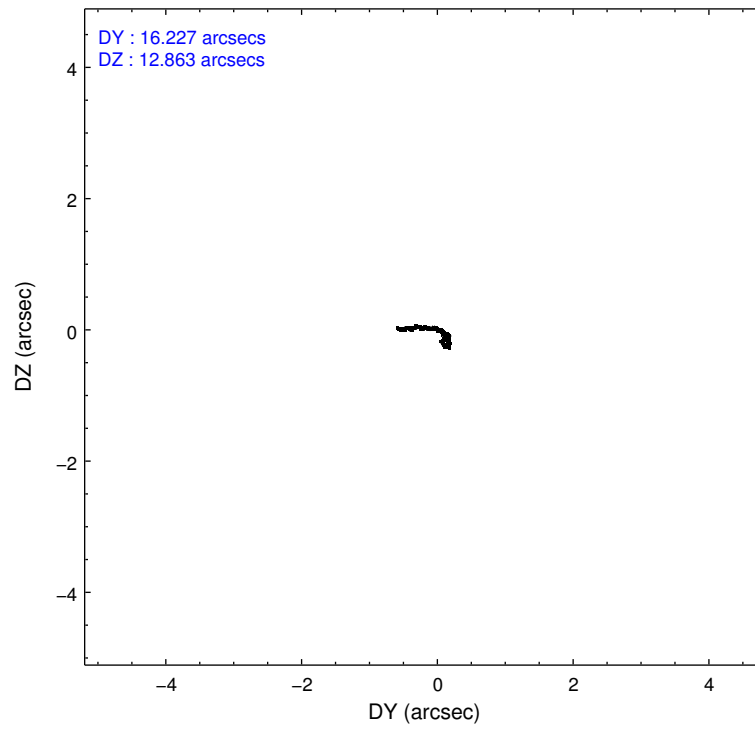
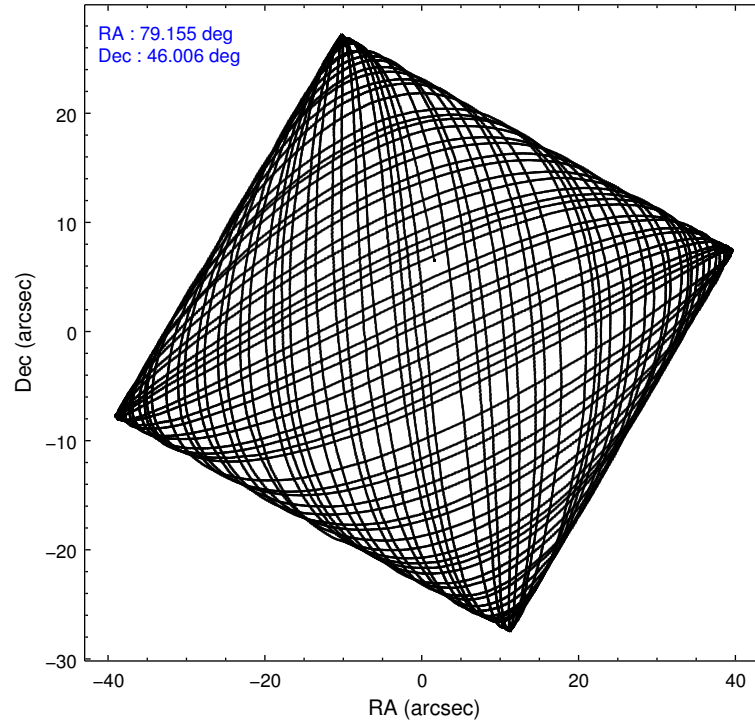
Level 1 Events

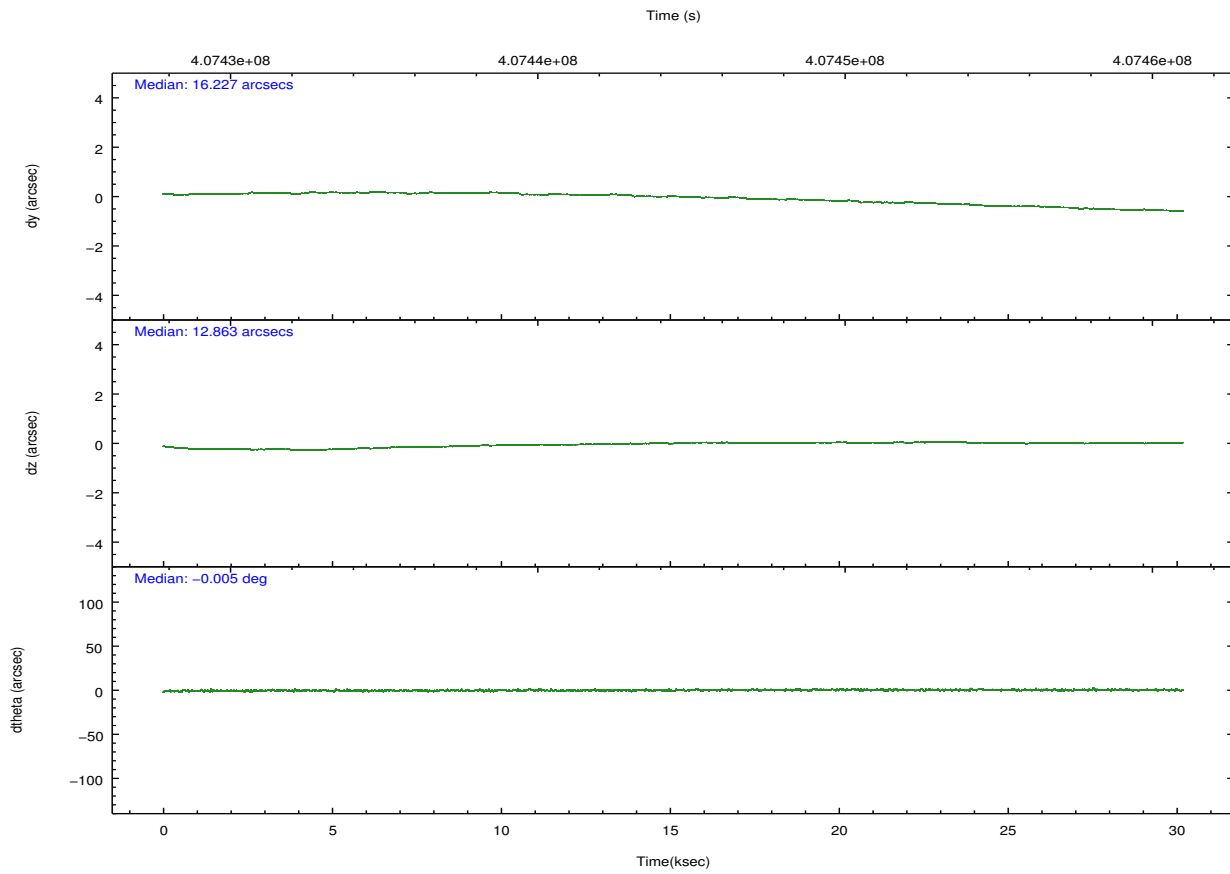
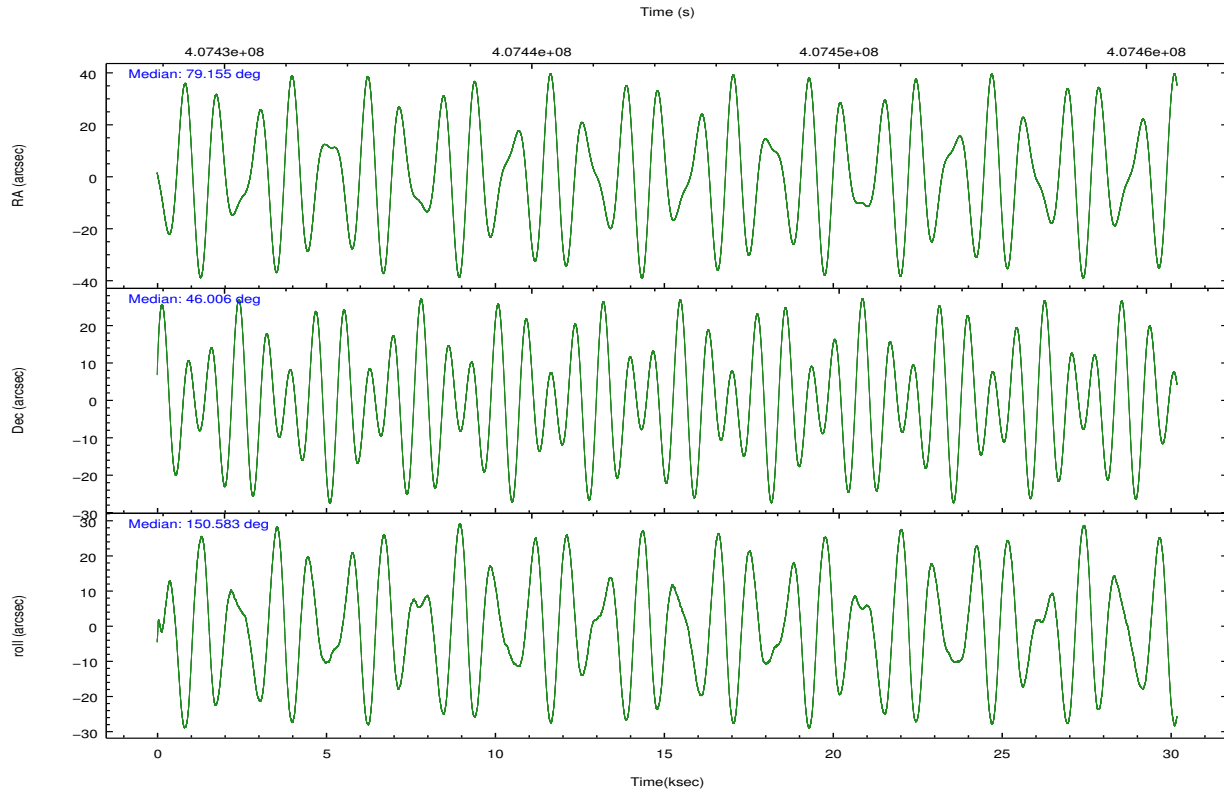
	segment 1	segment 2	segment 3
level 1 events	1028754	1153334	1037638
rejected events	9253	9997	9335
rejected %	0%	0%	0%

2.2 Compared Parameters

Parameter	Planned	Actual	Parameter	Planned	Actual
Instrument	HRC	HRC	Obspar format version number	7	7
Detector	HRC-S	HRC-S	Obspar file type	PREDICTED	ACTUAL
Grating	LETG	LETG	Obspar update status	NONE	UPDATED
Data mode	OBSERVING	OBSERVING			
Observation mode	POINTING	POINTING			
[deg] Pointing RA	79.195915	79.15464852731324			
[deg] Pointing Dec	46.008162	46.00647227770861			
[deg] Pointing Roll	150.494650	150.5916784766529			
[mm] SIM focus pos	-1.429586	-1.428180813131781			
[mm] SIM defocus	0.1037507710433287	0.1051558262725154			
[mm] SIM translation stage pos	250.455976	250.466033080201			
[mm] SIM translation stage offset	0	-0.01005468664627074			
[s] Observation start time (MET)	407429483.184000	407428763.8407			
Observation start date	2010-11-29T14:50:17	2010-11-29T14:39:23			
[s] Observation end time (MET)	407459483.184000	407460243.12982			
Observation end date	2010-11-29T23:10:17	2010-11-29T23:24:03			

2.3 Aspect



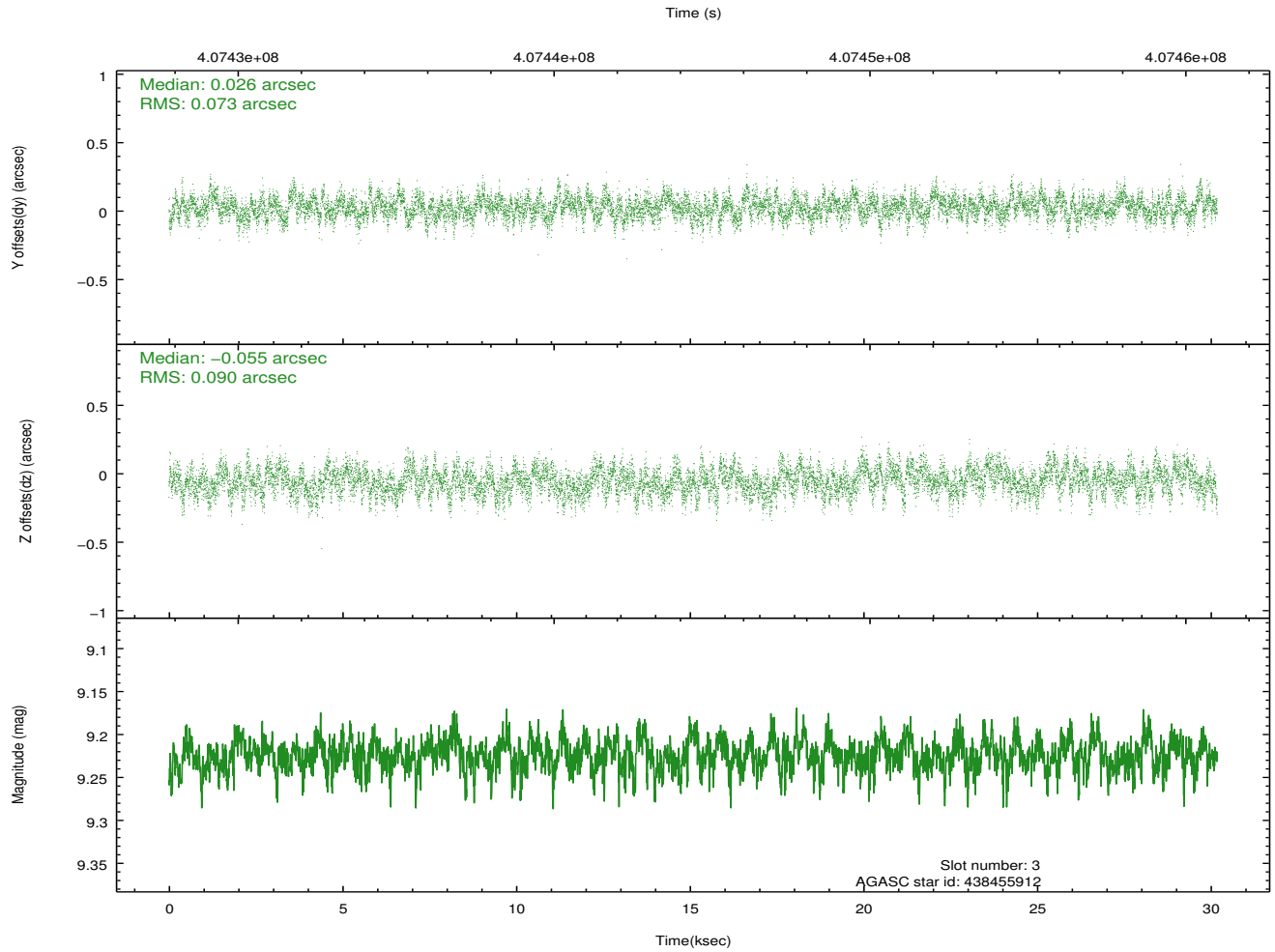
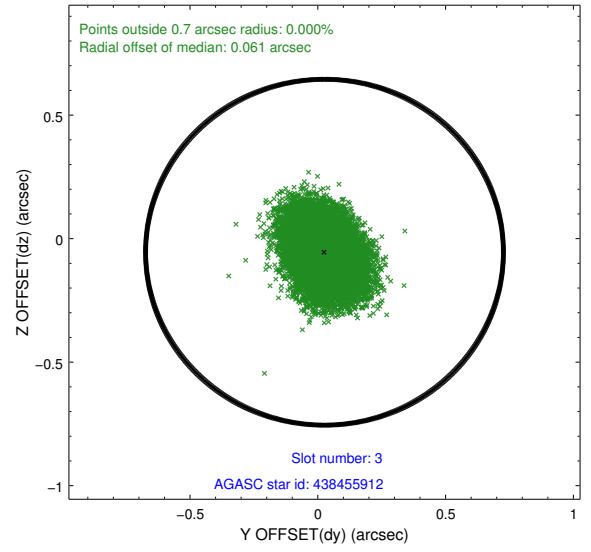
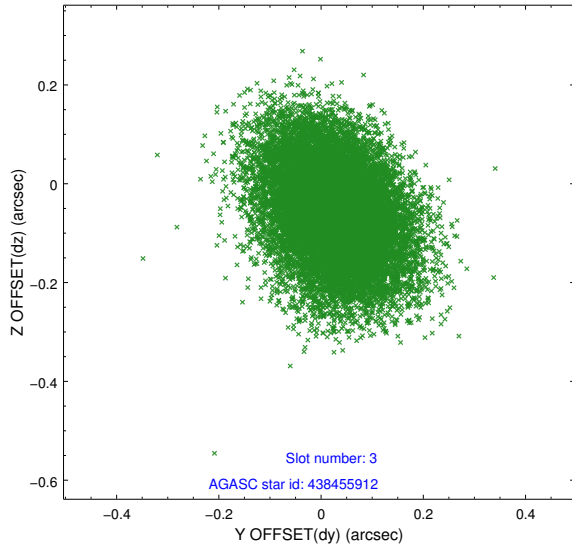


Slot Statistics

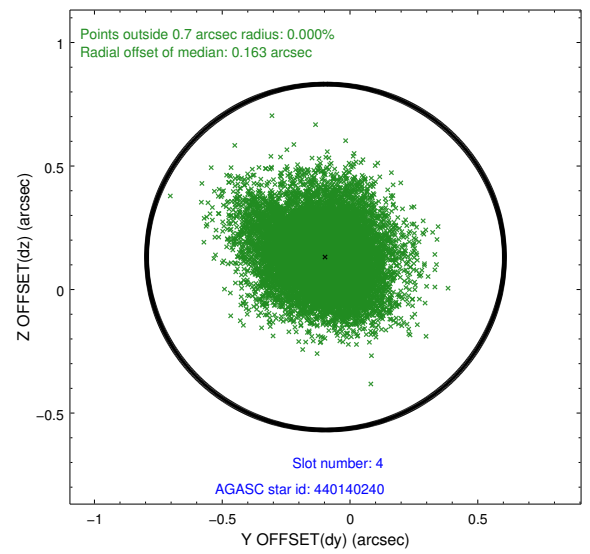
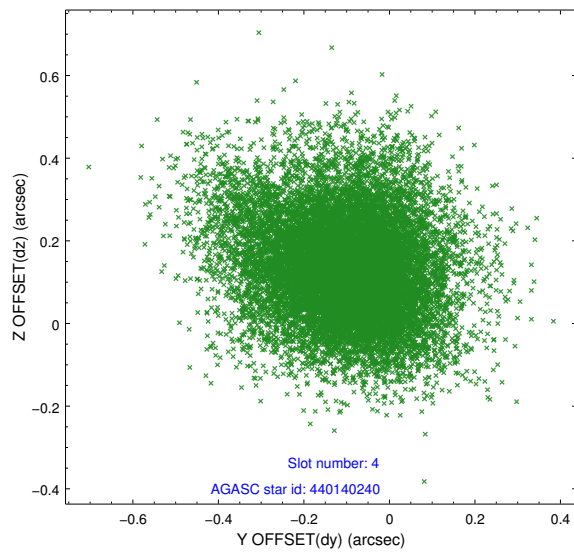
slot	status	id	mag	n_pts	med_dy	med_dz	dr1	dr2	ra	dec	mean_y	mean_z
0	FID	HRC-S-1	6.98	7362	0.026	-0.114	0.011	0.017	0.000000	0.000000	-1170.63	-461.59
1	FID	HRC-S-2	6.95	7361	0.282	-0.121	0.006	0.013	0.000000	0.000000	1229.15	-454.23
2	FID	HRC-S-3	6.99	7362	0.082	-0.068	0.011	0.017	0.000000	0.000000	-1173.15	567.92
3	GUIDE	438455912	9.22	14700	0.026	-0.055	0.124	0.201	78.251946	45.690923	1510.35	2151.20
4	GUIDE	440140240	9.96	14608	-0.096	0.131	0.181	0.317	78.889349	46.726437	1933.29	-1878.31
5	GUIDE	440150048	7.18	14724	0.020	0.122	0.078	0.129	79.112838	46.416060	903.33	-1176.23
6	GUIDE	440163960	8.88	14709	0.124	0.000	0.106	0.175	79.298370	45.827072	-544.40	440.43
7	GUIDE	438460832	8.97	14714	-0.070	-0.201	0.116	0.182	78.414614	45.554782	914.54	2382.49

2.4 Star Slots

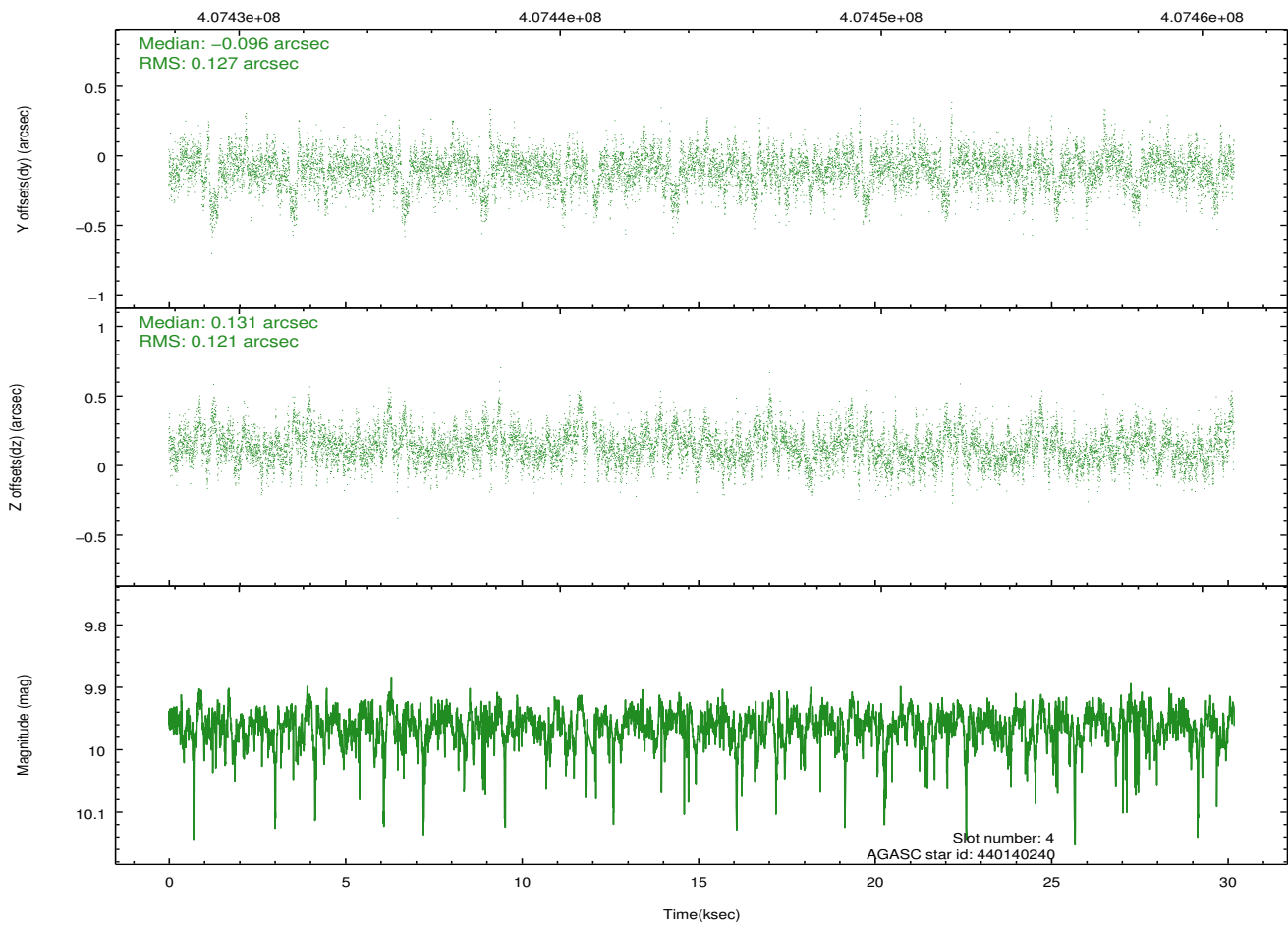
2.4.1 Slot 3



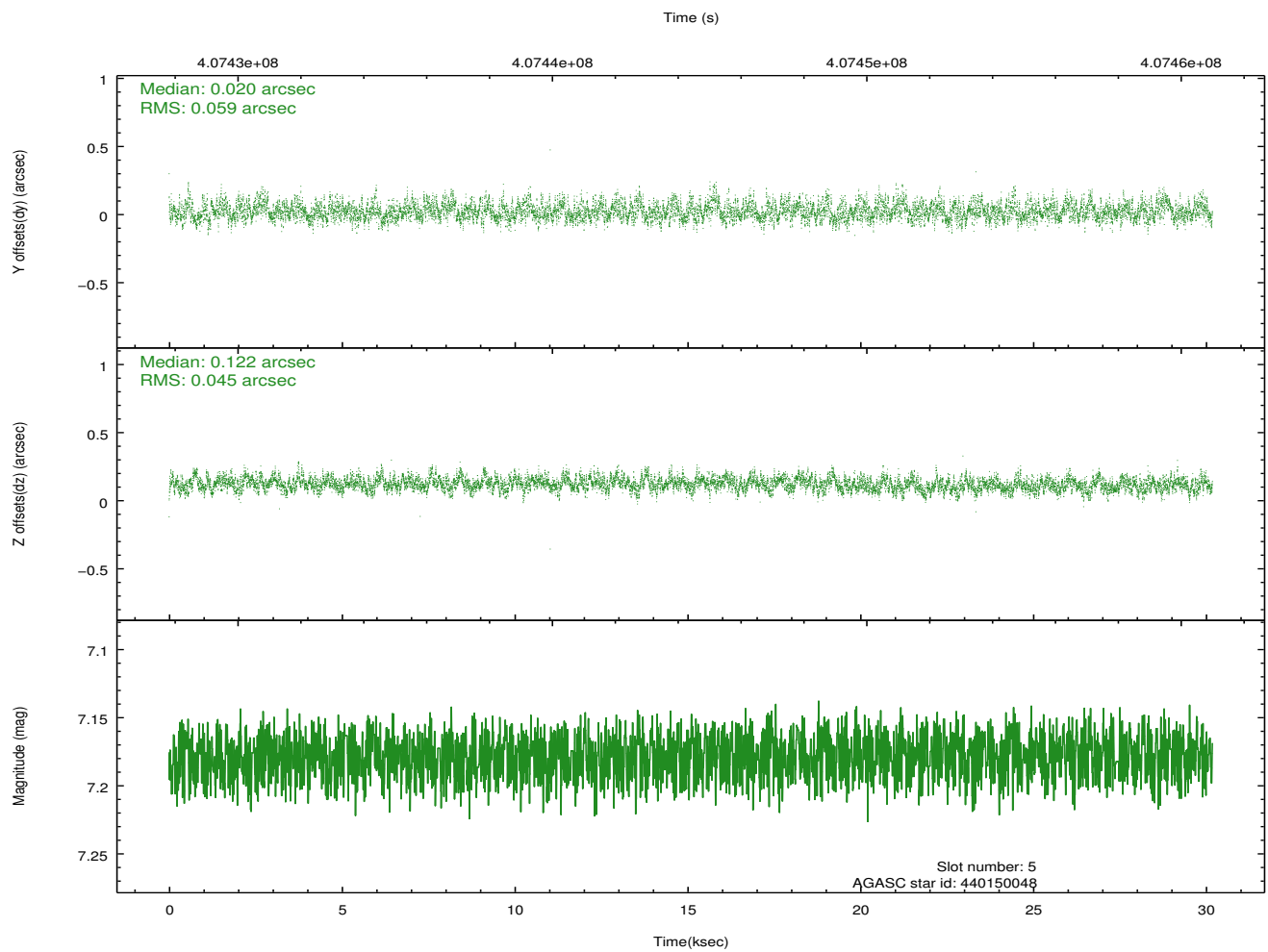
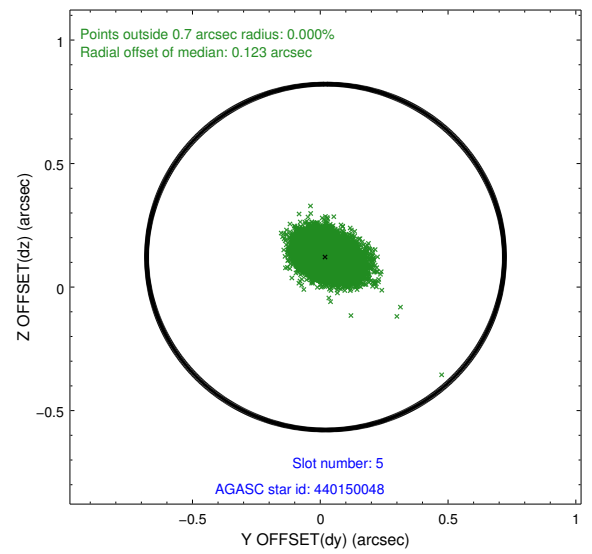
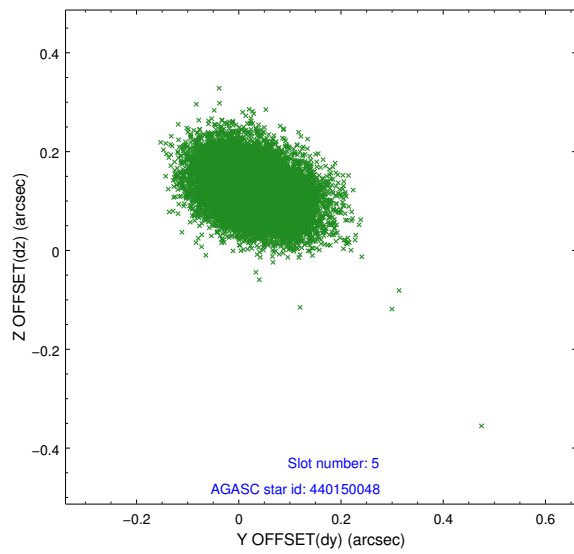
2.4.2 Slot 4



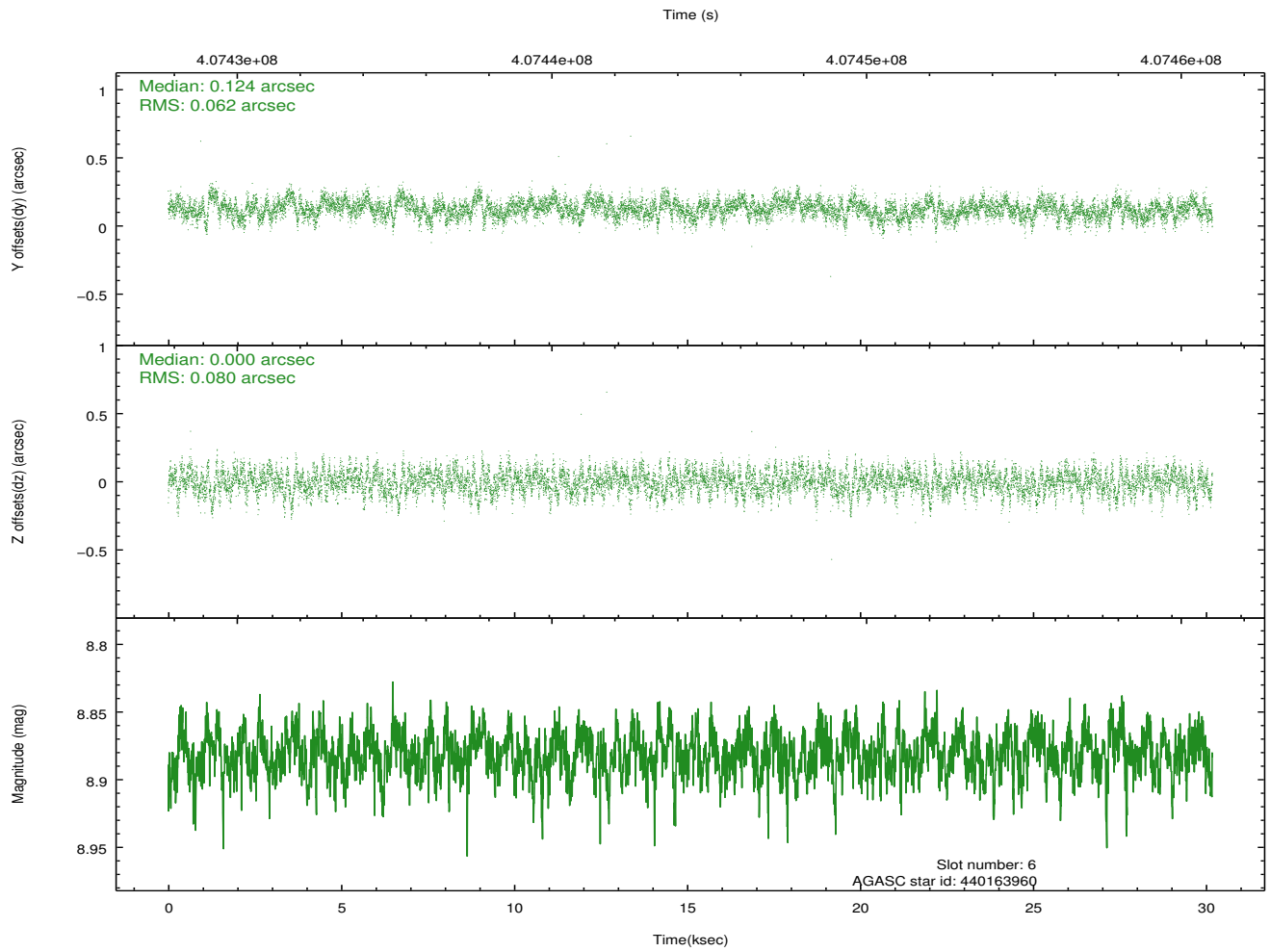
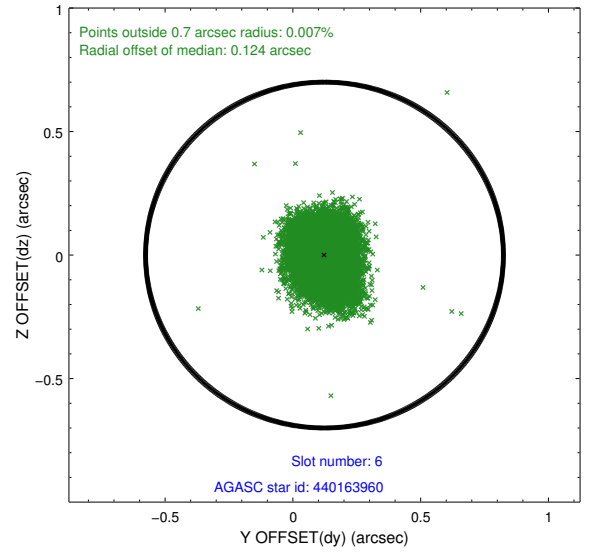
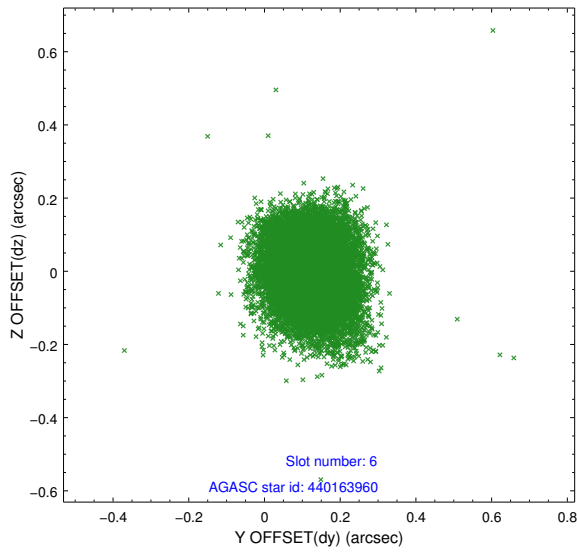
Time (s)



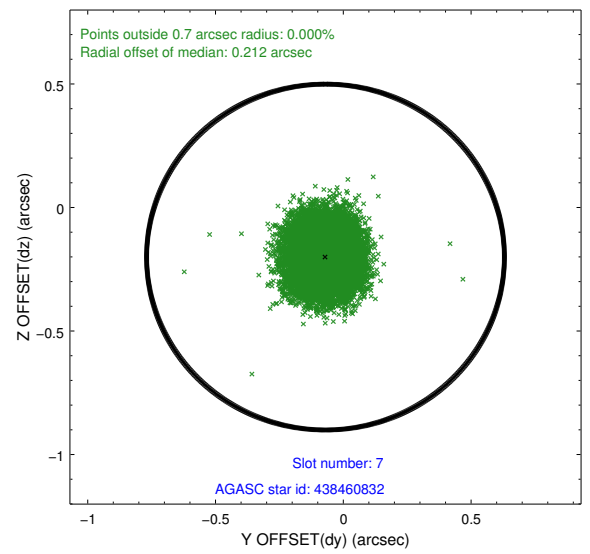
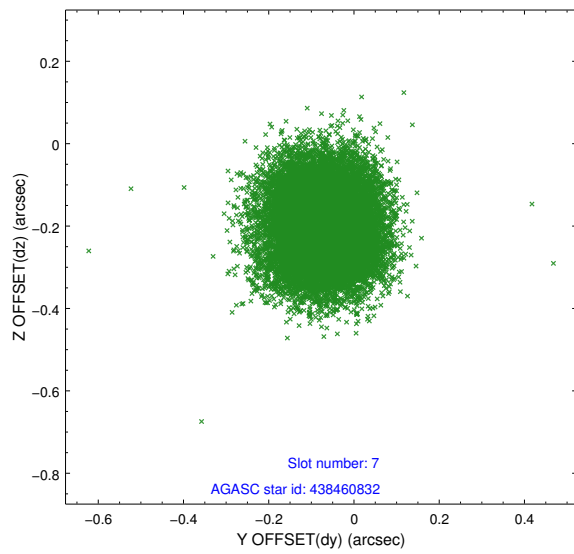
2.4.3 Slot 5



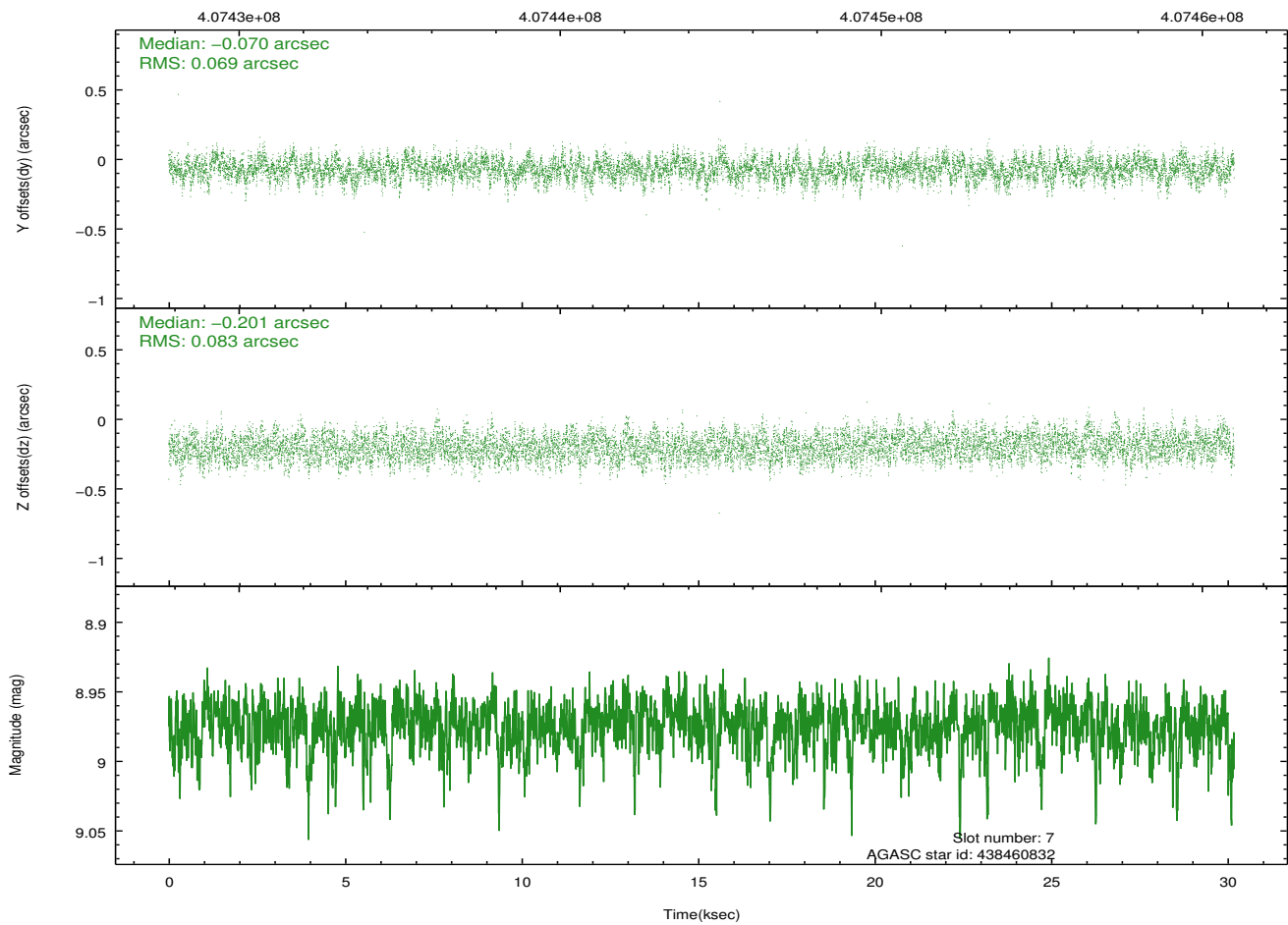
2.4.4 Slot 6



2.4.5 Slot 7

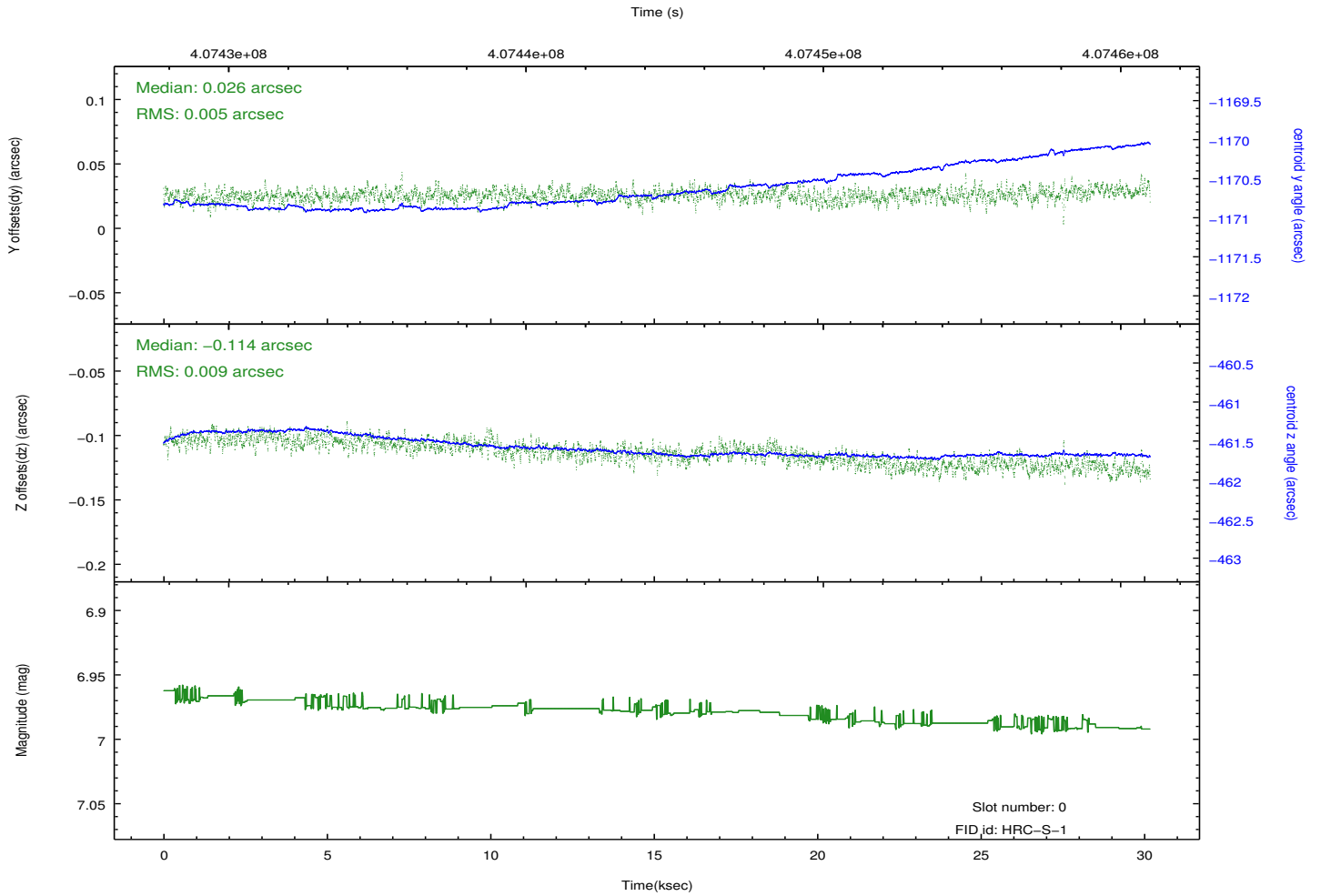
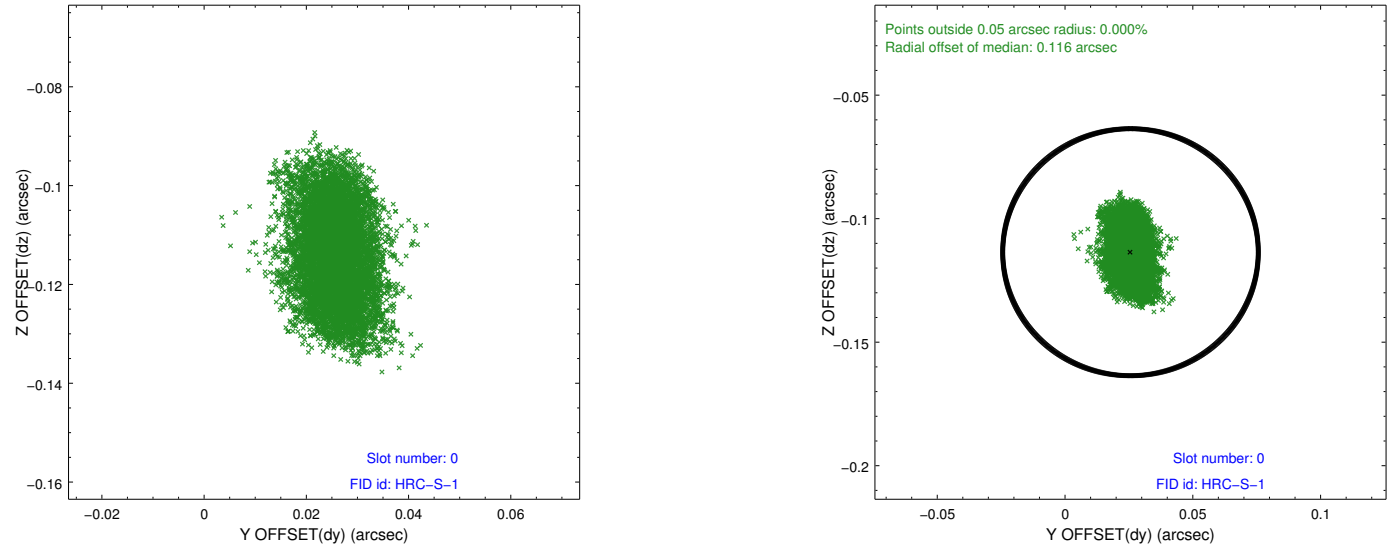


Time (s)

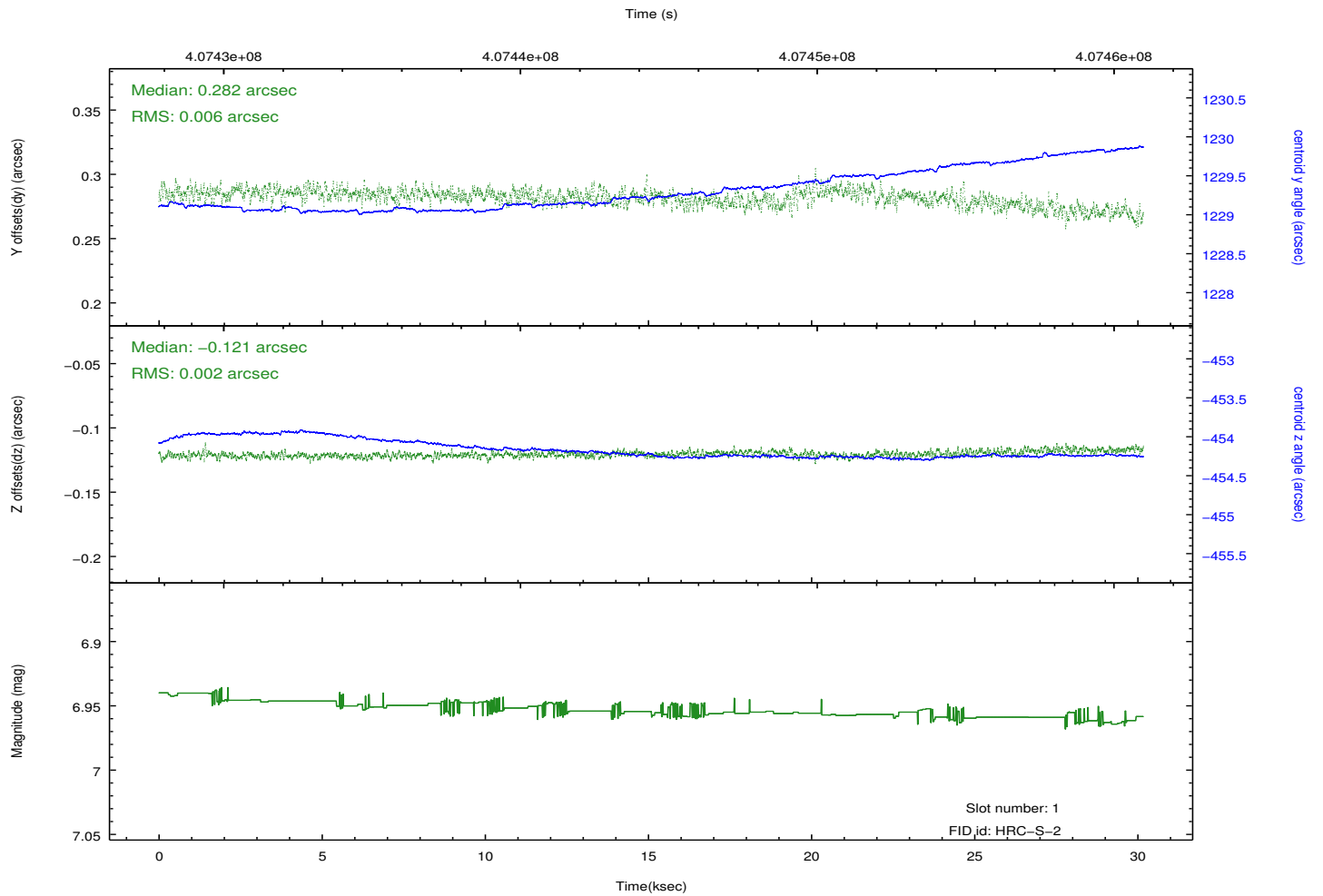
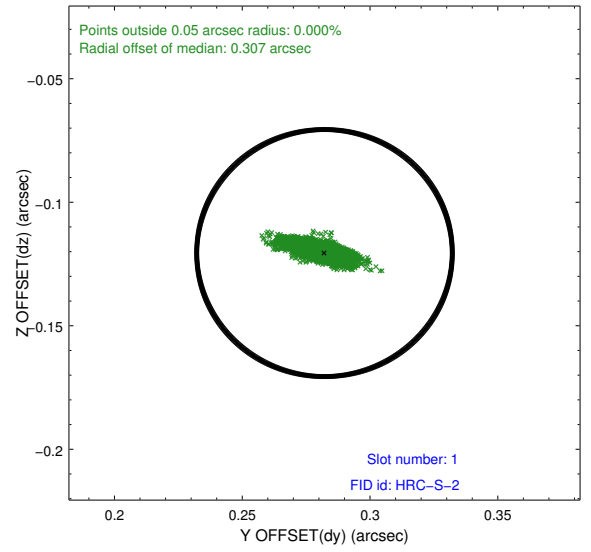
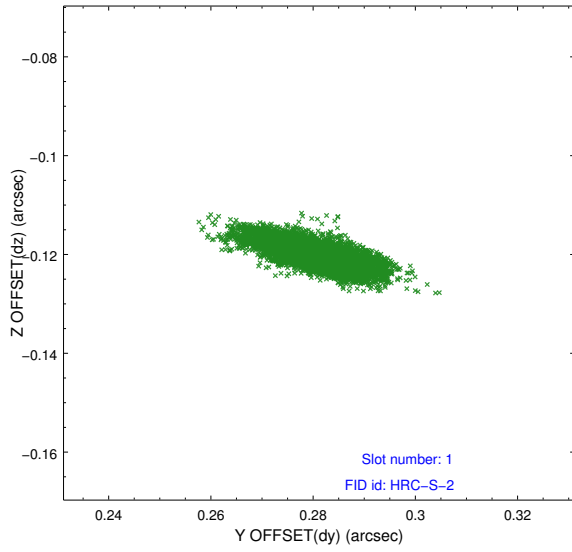


2.5 FID Slots

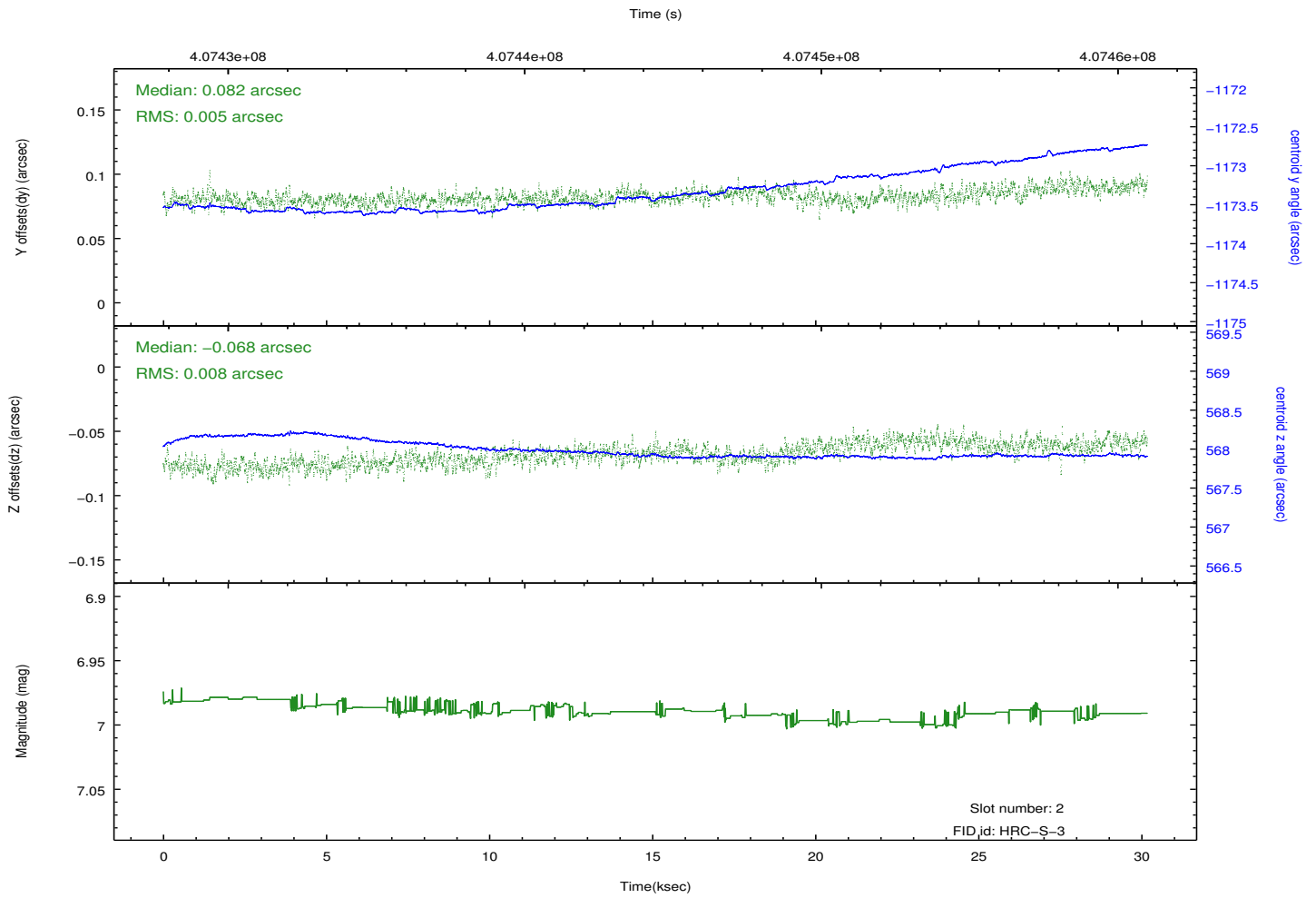
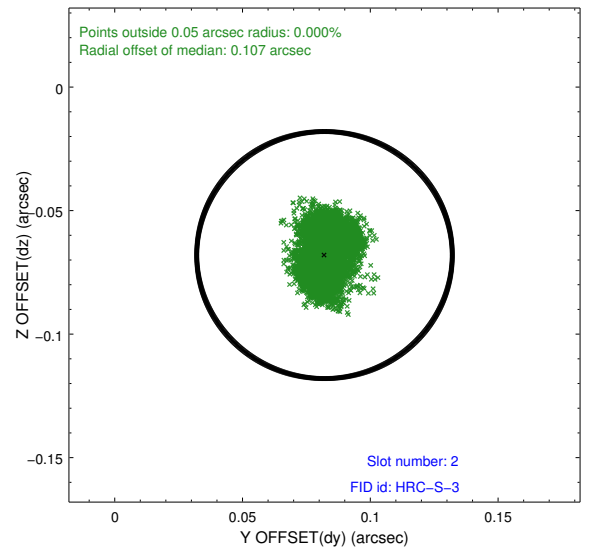
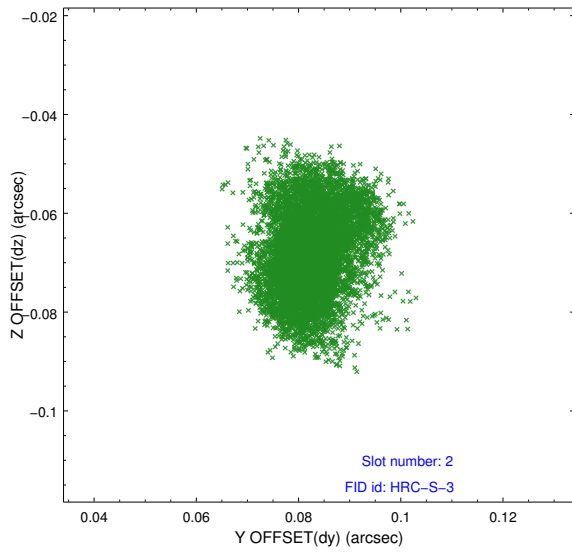
2.5.1 Slot 0



2.5.2 Slot 1

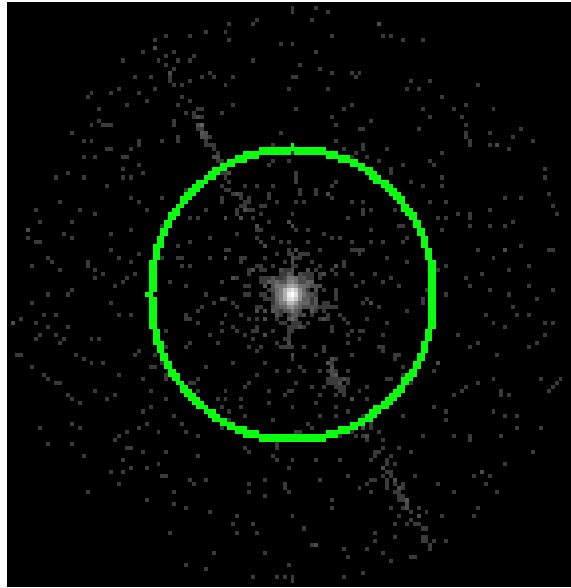


2.5.3 Slot 2

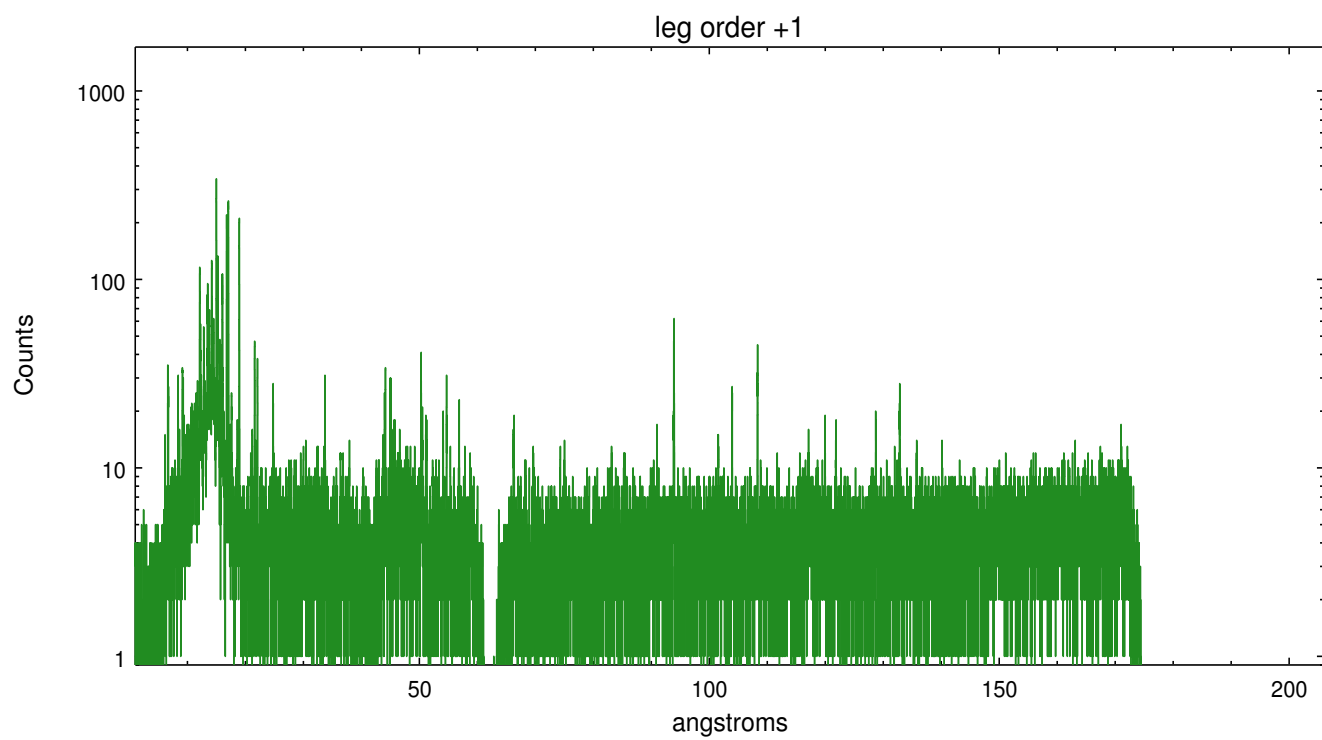
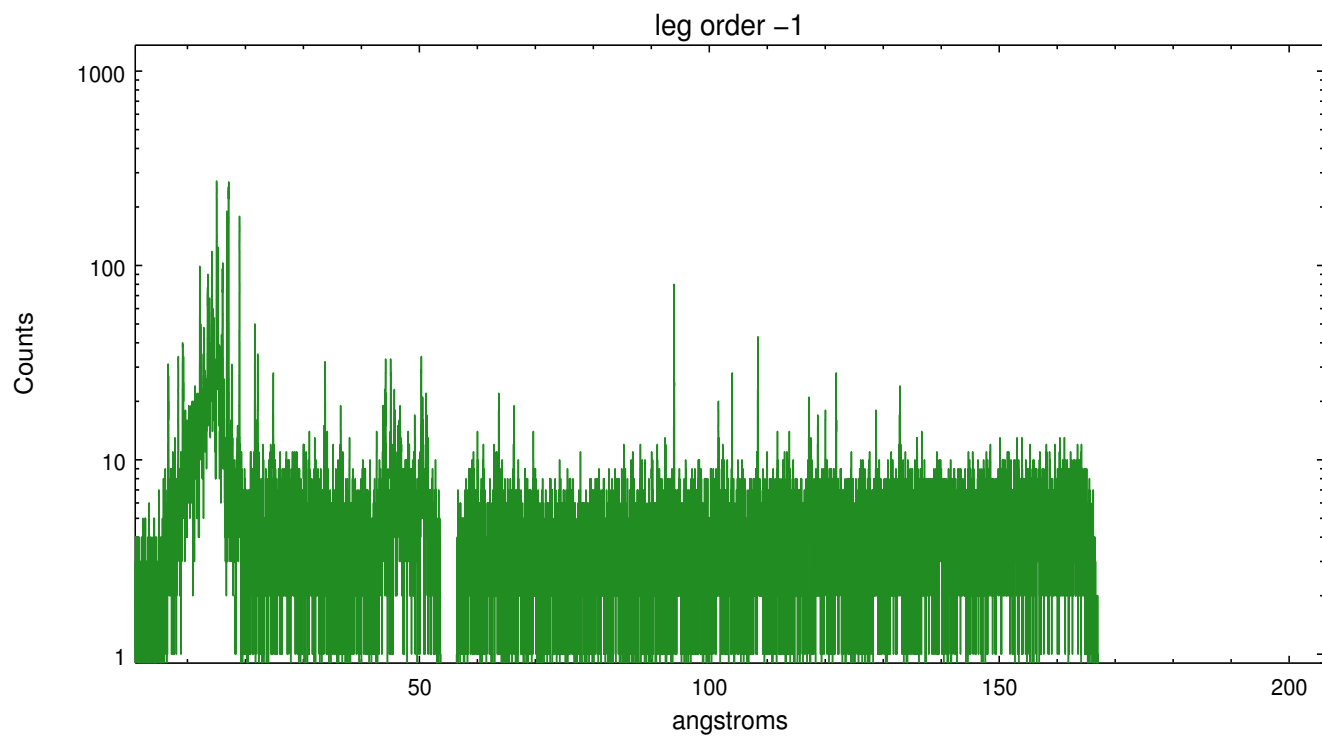


3 Gratings

3.1 LETG Arm



LETG Zero Order



A Summary

A.1 Status

V&V Scientist	Joy Nichols
V&V Date (YYYY-MM-DD)	2012.07.19
V&V Edition	1
V&V Disposition and Status	OK
V&V Charge Time	30.183176561594

A.2 Comments