

V&V Reference Report

L2 ASCDS Version : 8.4.3

Observation 13280 - L2 Version 2
Chandra X-Ray Center

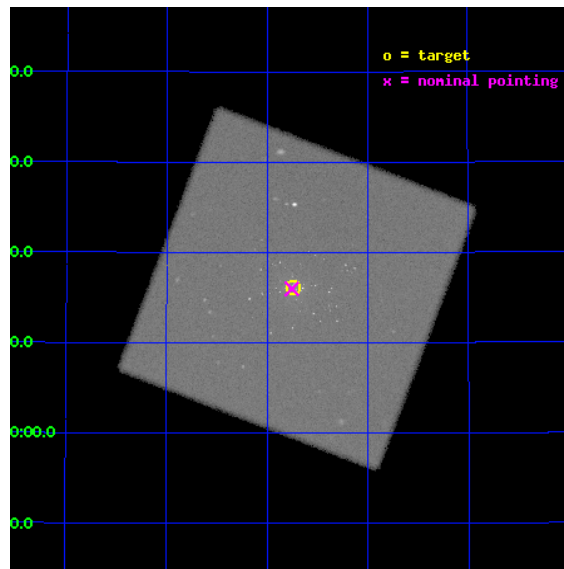
L2 Processing Date : Jul 28 2012

Contents

1	Front	2
2	OBI	3
2.1	OBI	3
2.1.1	Images	3
2.1.2	Parameters	4
2.1.3	Events	4
2.2	Compared Parameters	5
2.3	Aspect	6
2.4	Star Slots	9
2.4.1	Slot 3	9
2.4.2	Slot 4	10
2.4.3	Slot 5	11
2.4.4	Slot 6	12
2.4.5	Slot 7	13
2.5	FID Slots	14
2.5.1	Slot 0	14
2.5.2	Slot 1	15
2.5.3	Slot 2	16
A	Summary	17
A.1	Status	17
A.2	Comments	17

1 Front

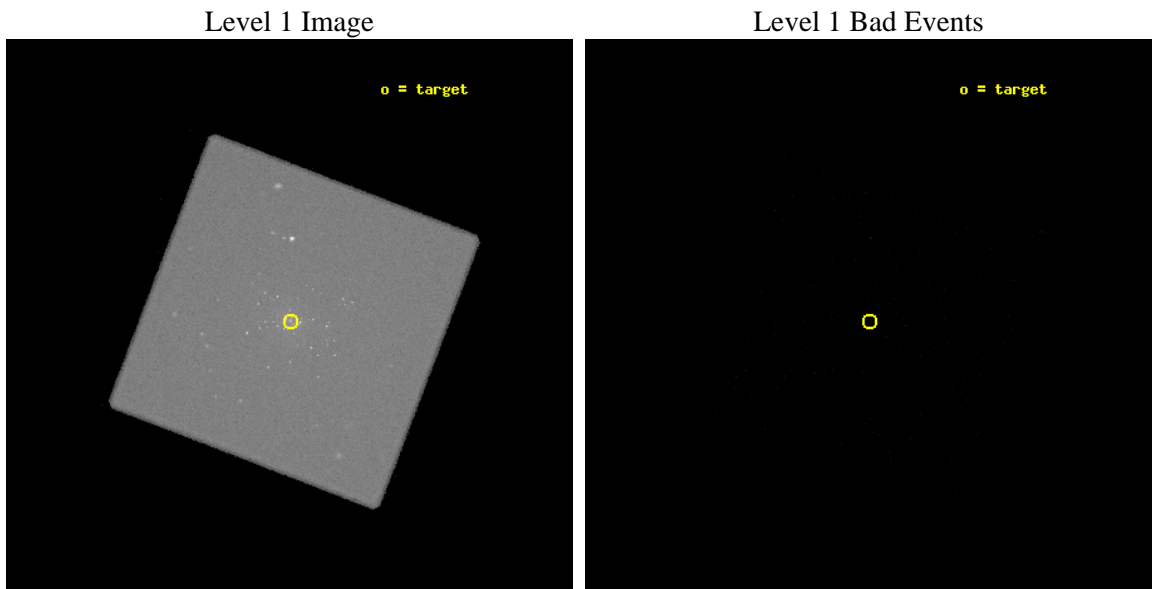
seq_num	300300	Sequence number
obs_id	13280	Observation id
title	Resolving short supersoft source states of optical novae in the core of M31	Proposal title
observer	Dr. Peter Predehl	Principal investigator
object	M31	Source name
ra_targ	10.684583	Observer's specified target RA [deg]
dec_targ	41.269278	Observer's specified target Dec [deg]
ra_nom	10.68859140603	Nominal RA [deg]
dec_nom	41.266290406134	Nominal Dec [deg]
roll_nom	335.95469993186	Nominal Roll [deg]
revision	2	Processing version of data
ontime	19447.582278371	[s]
livetime	19285.884149728	Ontime multiplied by DTCOR
l2events	1279617	Number of level 2 events



2 OBI

2.1 OBI

2.1.1 Images



2.1.2 Parameters

obi_num	1	Obi number	sched_exp_time	19258.000000	[s] Scheduled observation exposure time
ascdsver	8.4.5	Processing system revision	ontime	19447.582278371	[s]
caldbver	4.5.1	 	l1events	1805010	Number of level 1 events
date	2012-07-28T09:02:59	Date and time of file creation			
revision	2	Processing version of data			

2.1.3 Events

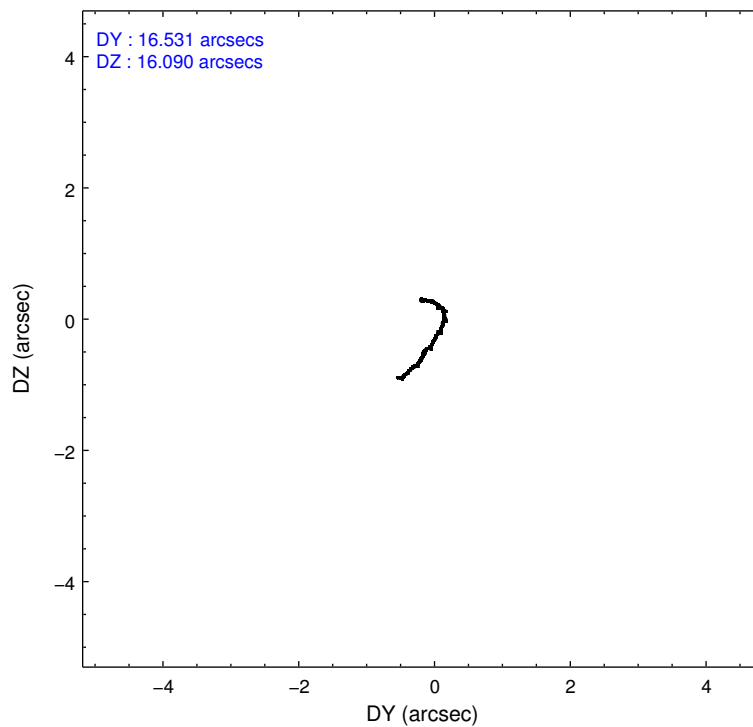
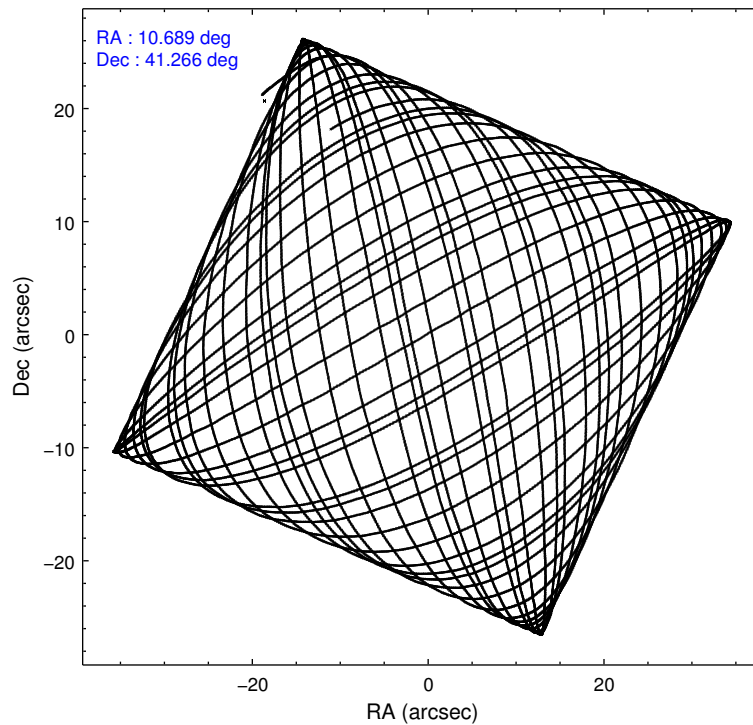
Level 1 Events

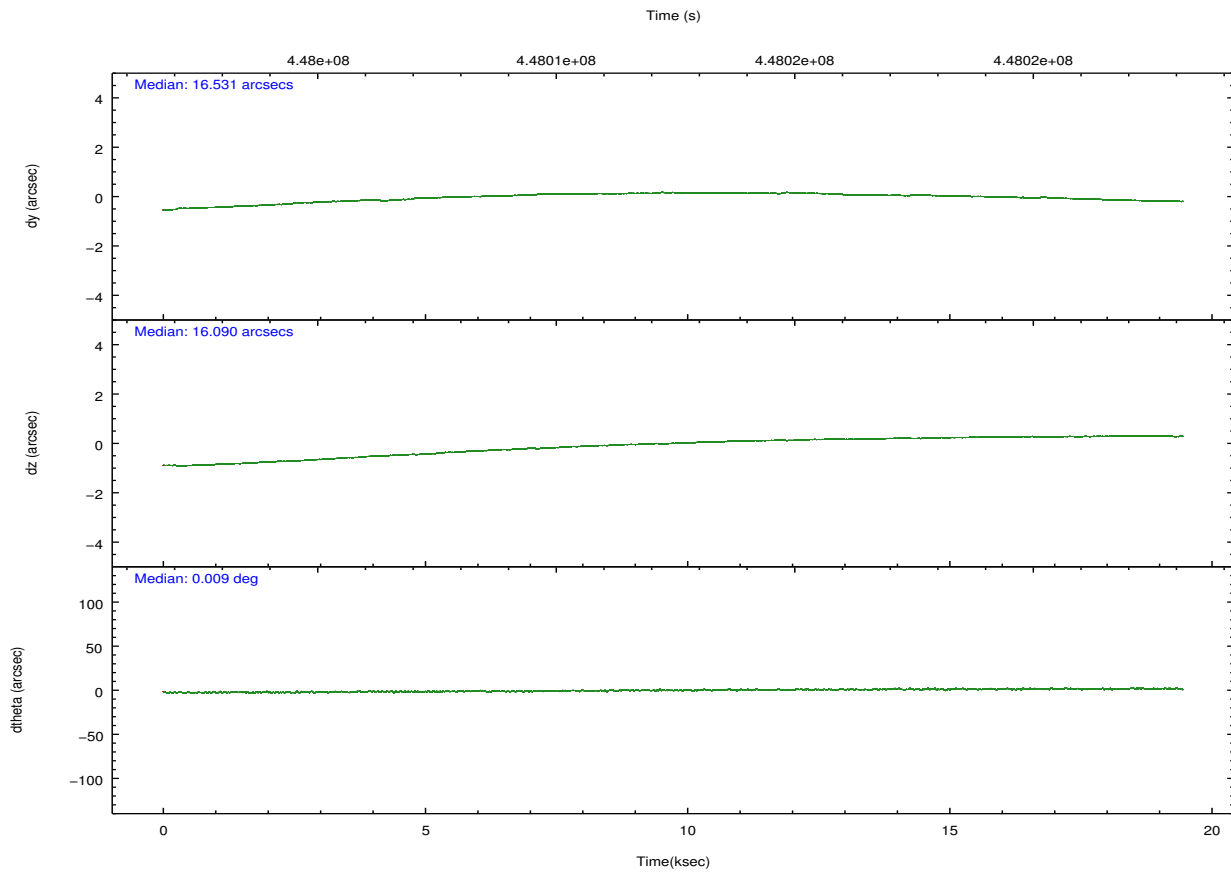
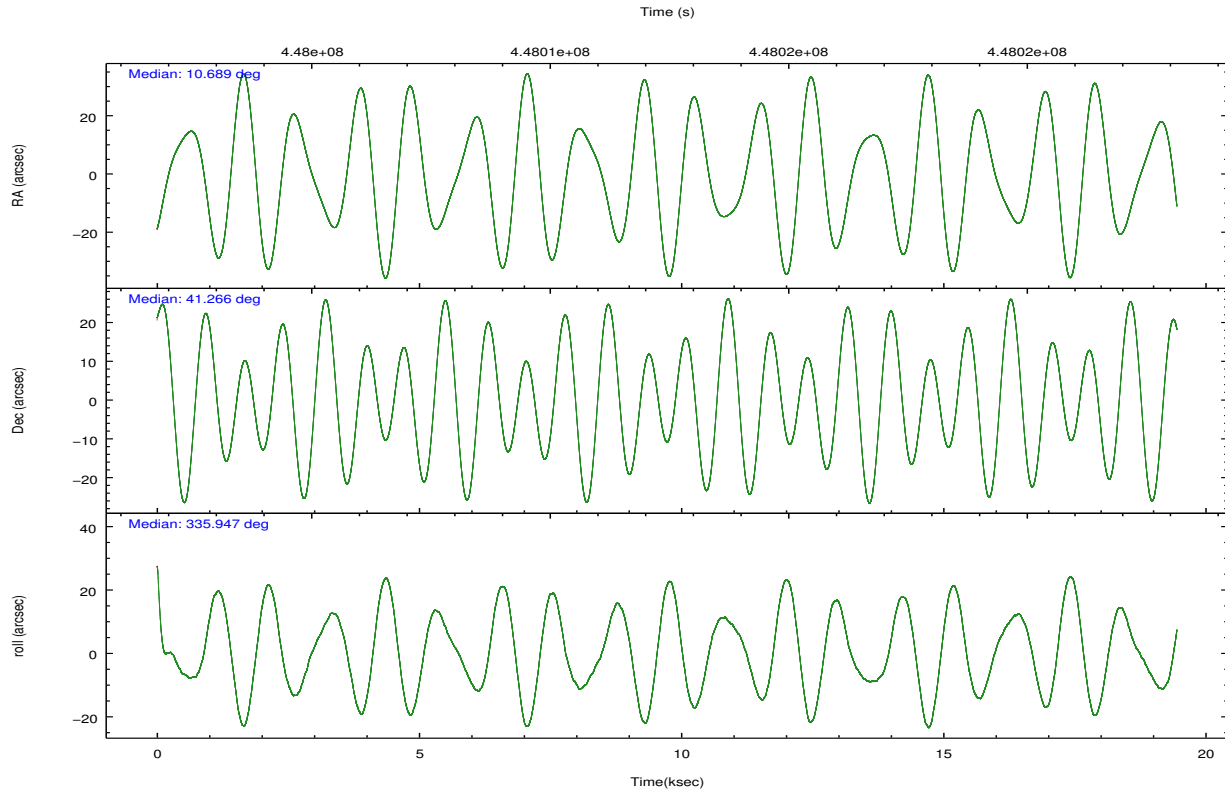
	segment 0
level 1 events	1805010
rejected events	76260
rejected %	4%

2.2 Compared Parameters

Parameter	Planned	Actual	Parameter	Planned	Actual
Instrument	HRC	HRC	Obspar format version number	7	7
Detector	HRC-I	HRC-I	Obspar file type	PREDICTED	ACTUAL
Grating	NONE	NONE	Obspar update status	NONE	UPDATED
Data mode	OBSERVING	OBSERVING			
Observation mode	POINTING	POINTING			
[deg] Pointing RA	10.652621	10.68859140603007			
[deg] Pointing Dec	41.262798	41.266290406134			
[deg] Pointing Roll	336.073910	335.9546999318587			
[mm] SIM focus pos	-1.040293	-1.038866356238299			
[mm] SIM defocus	0	0.001426264420575141			
[mm] SIM translation stage pos	126.985494	126.9854943052878			
[mm] SIM translation stage offset	0	-5.413686238853188e-06			
[s] Observation start time (MET)	448002908.184000	448001915.91343			
Observation start date	2012-03-13T05:14:02	2012-03-13T04:58:35			
[s] Observation end time (MET)	448022166.184000	448023137.51455			
Observation end date	2012-03-13T10:35:00	2012-03-13T10:52:17			

2.3 Aspect



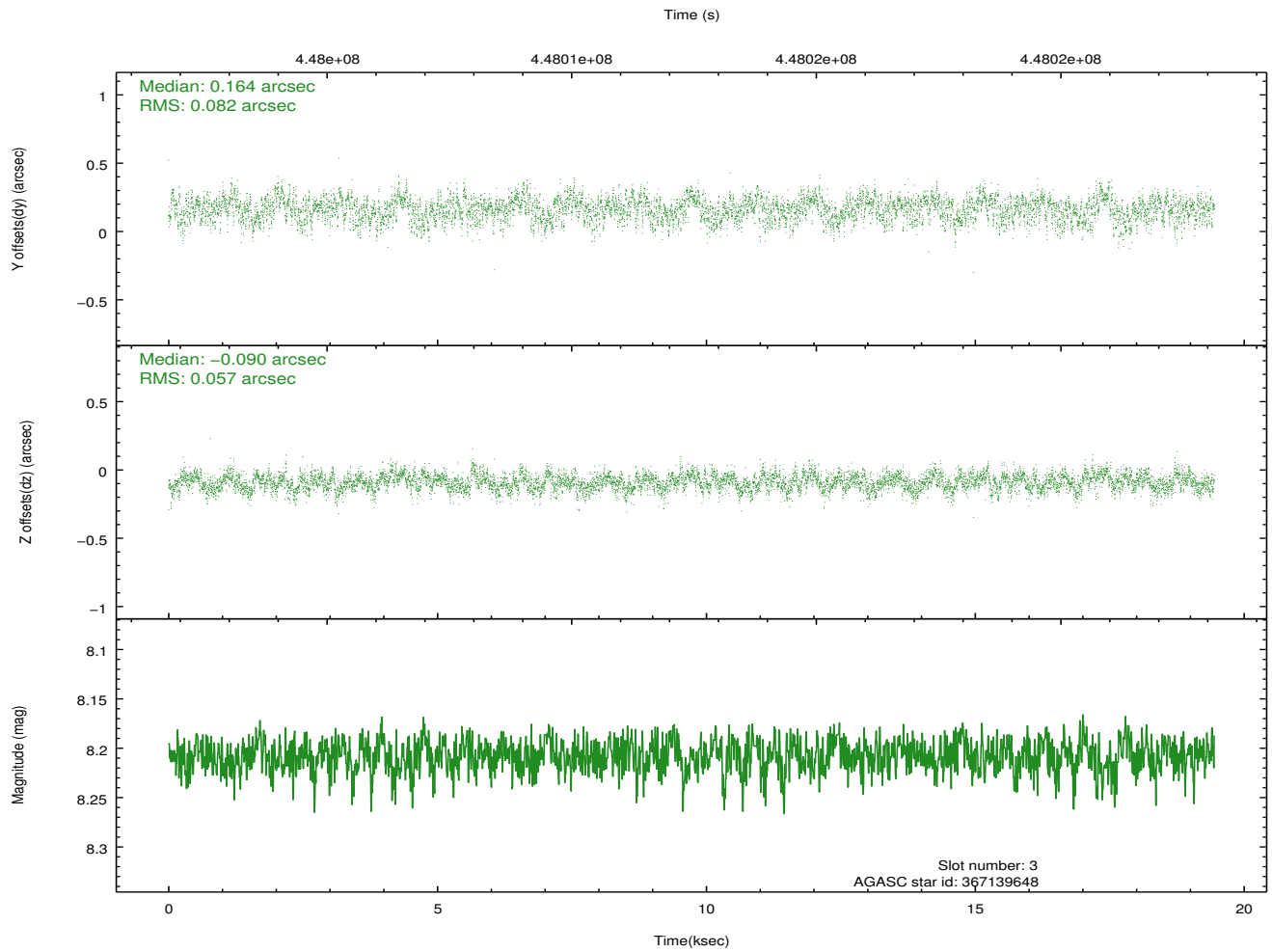
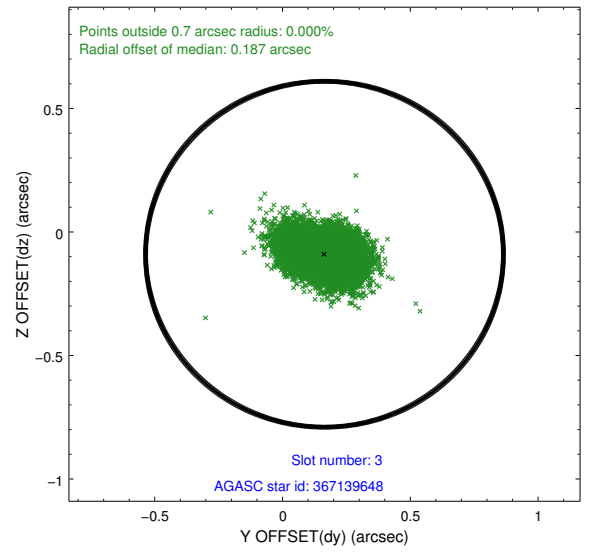
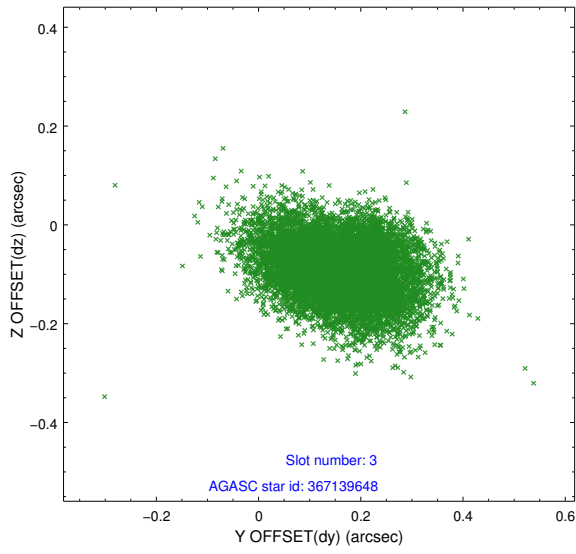


Slot Statistics

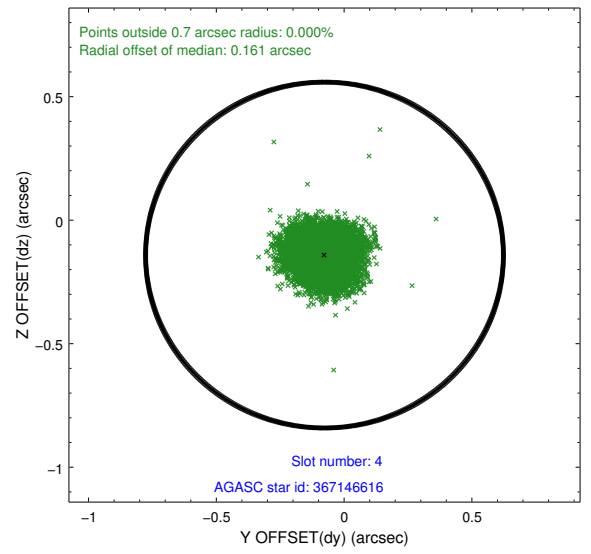
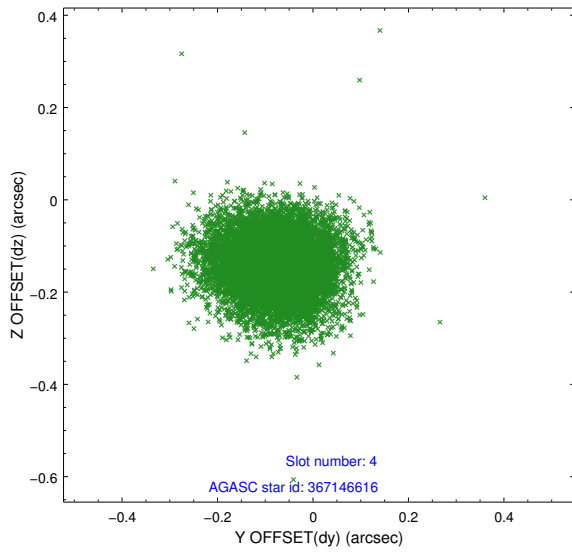
slot	status	id	mag	n_pts	med_dy	med_dz	dr1	dr2	ra	dec	mean_y	mean_z
0	FID	HRC-I-1	6.95	4744	-0.096	0.013	0.012	0.018	0.000000	0.000000	-772.42	-1304.12
1	FID	HRC-I-2	6.98	4744	0.220	-0.094	0.018	0.037	0.000000	0.000000	840.37	-1306.06
2	FID	HRC-I-3	7.03	4743	-0.008	-0.011	0.016	0.034	0.000000	0.000000	-1200.64	1000.15
3	GUIDE	367139648	8.21	9487	0.164	-0.090	0.105	0.175	11.021290	40.433909	2134.00	-2316.02
4	GUIDE	367146616	8.84	9481	-0.077	-0.141	0.097	0.156	11.418645	41.190163	1999.55	610.73
5	GUIDE	367148872	7.22	9487	-0.012	0.110	0.093	0.153	10.505940	40.688258	473.60	-2053.34
6	GUIDE	367663272	9.28	9478	0.067	0.118	0.122	0.195	10.656279	41.699429	-629.04	1439.66
7	GUIDE	367674552	8.83	9462	-0.141	0.001	0.097	0.157	11.016238	41.570845	444.62	1412.78

2.4 Star Slots

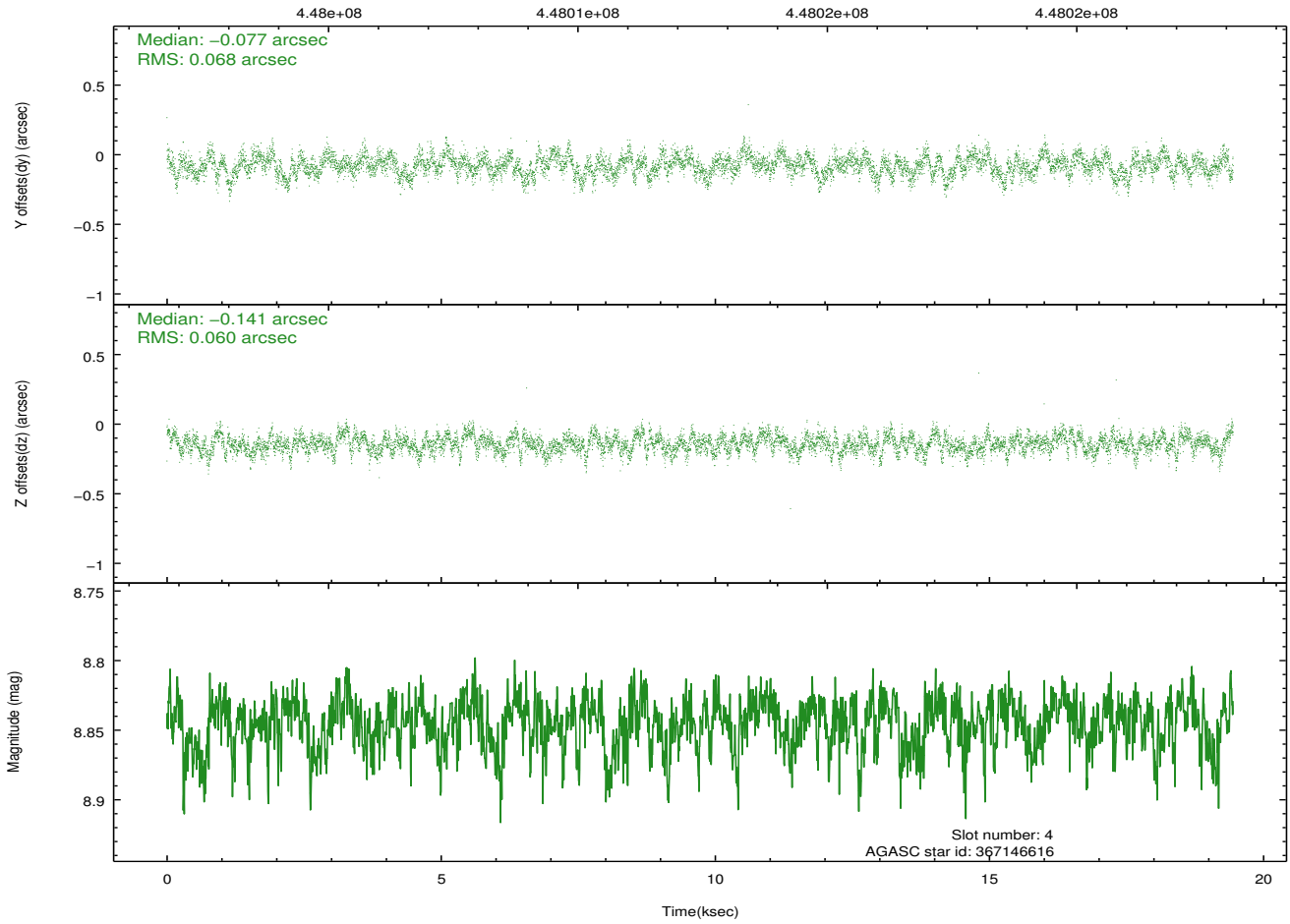
2.4.1 Slot 3



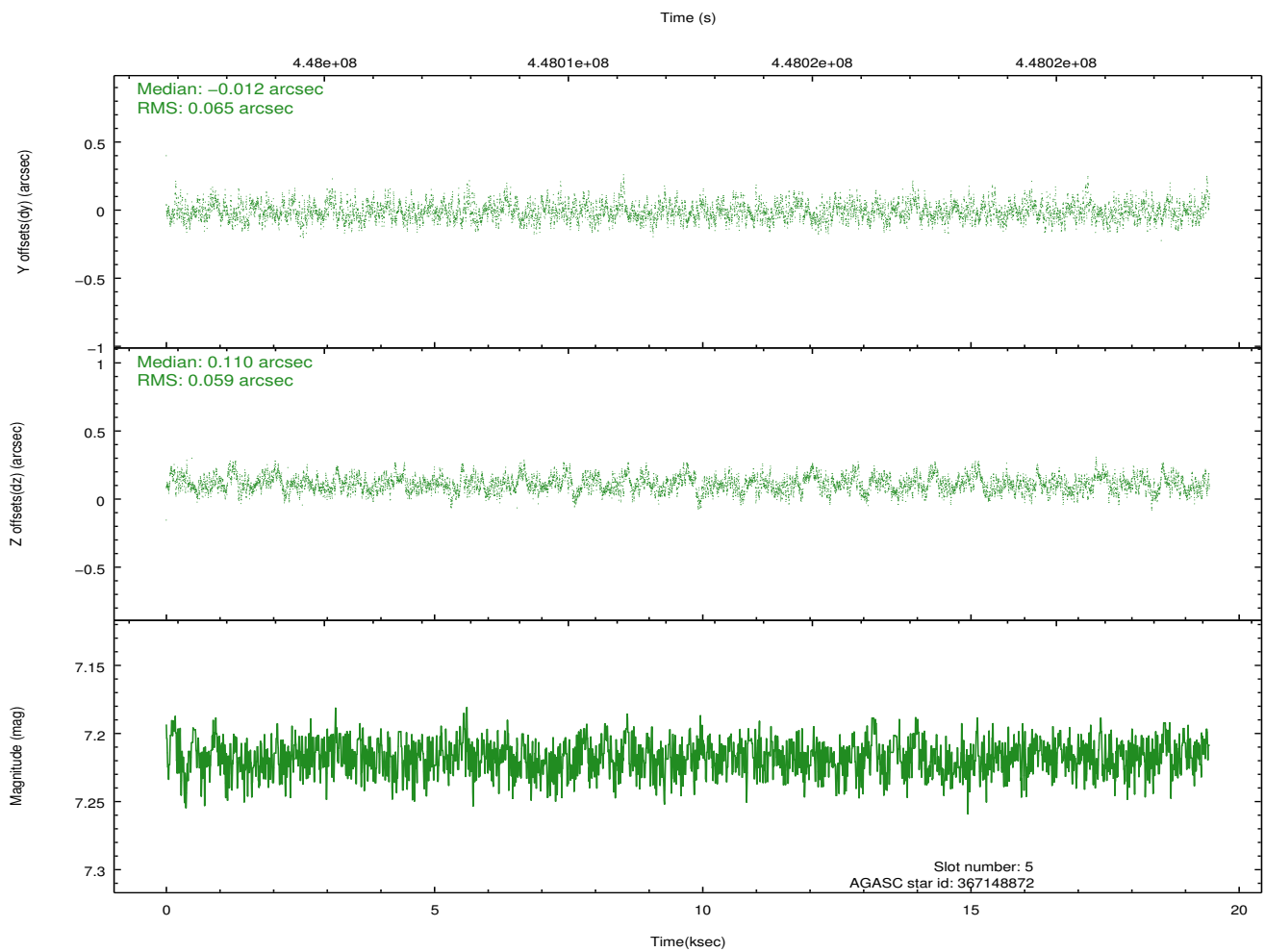
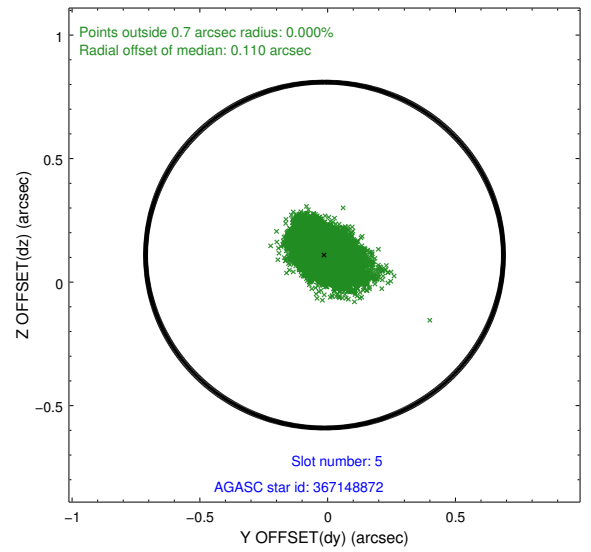
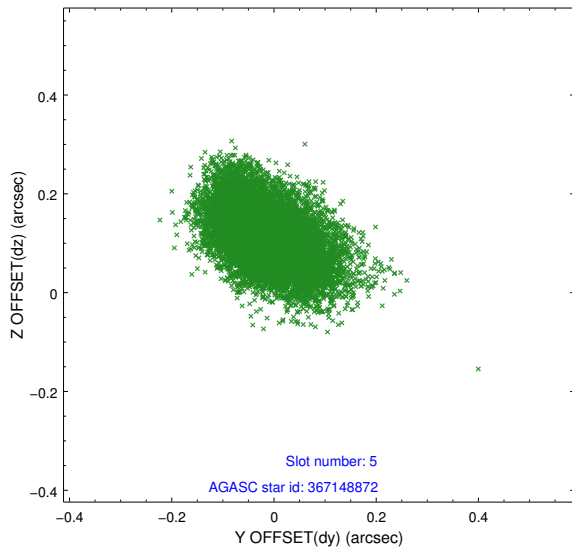
2.4.2 Slot 4



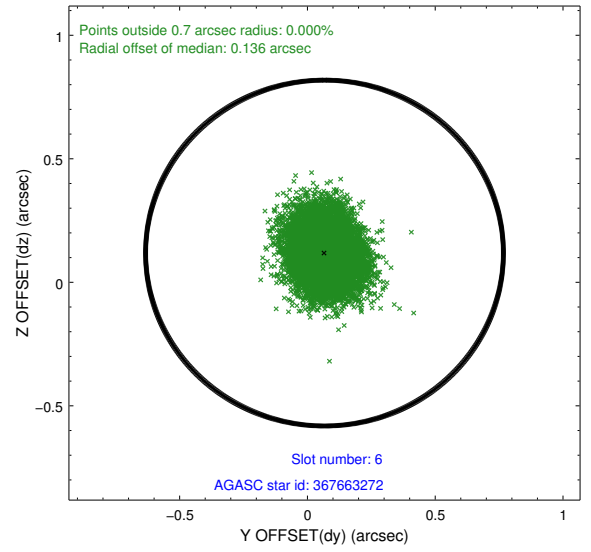
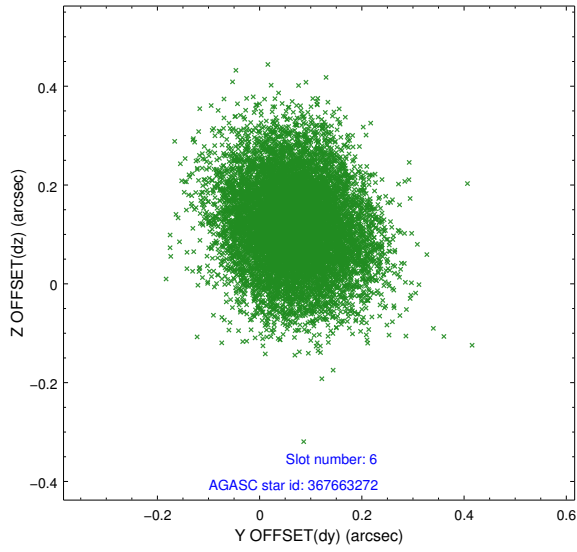
Time (s)



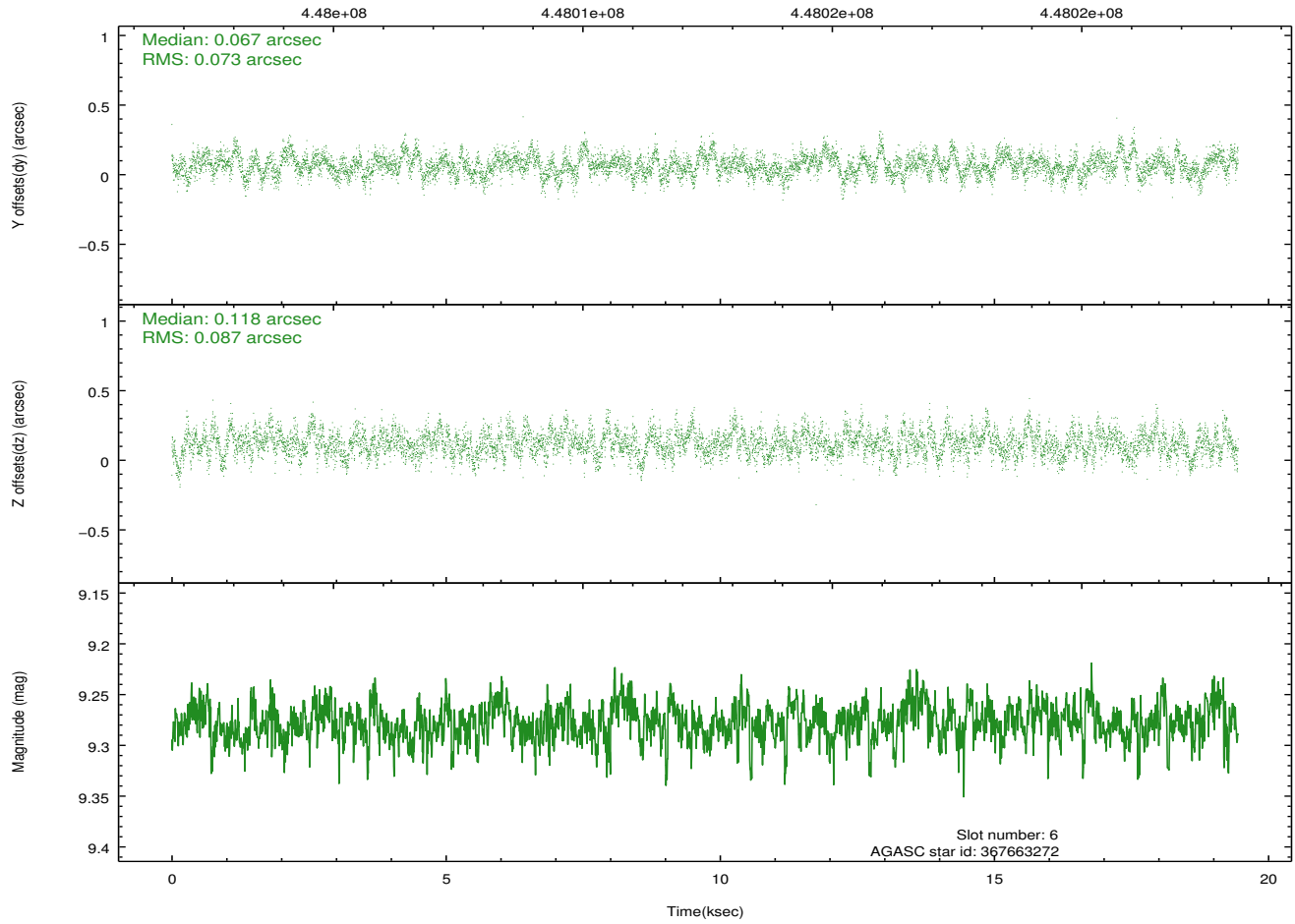
2.4.3 Slot 5



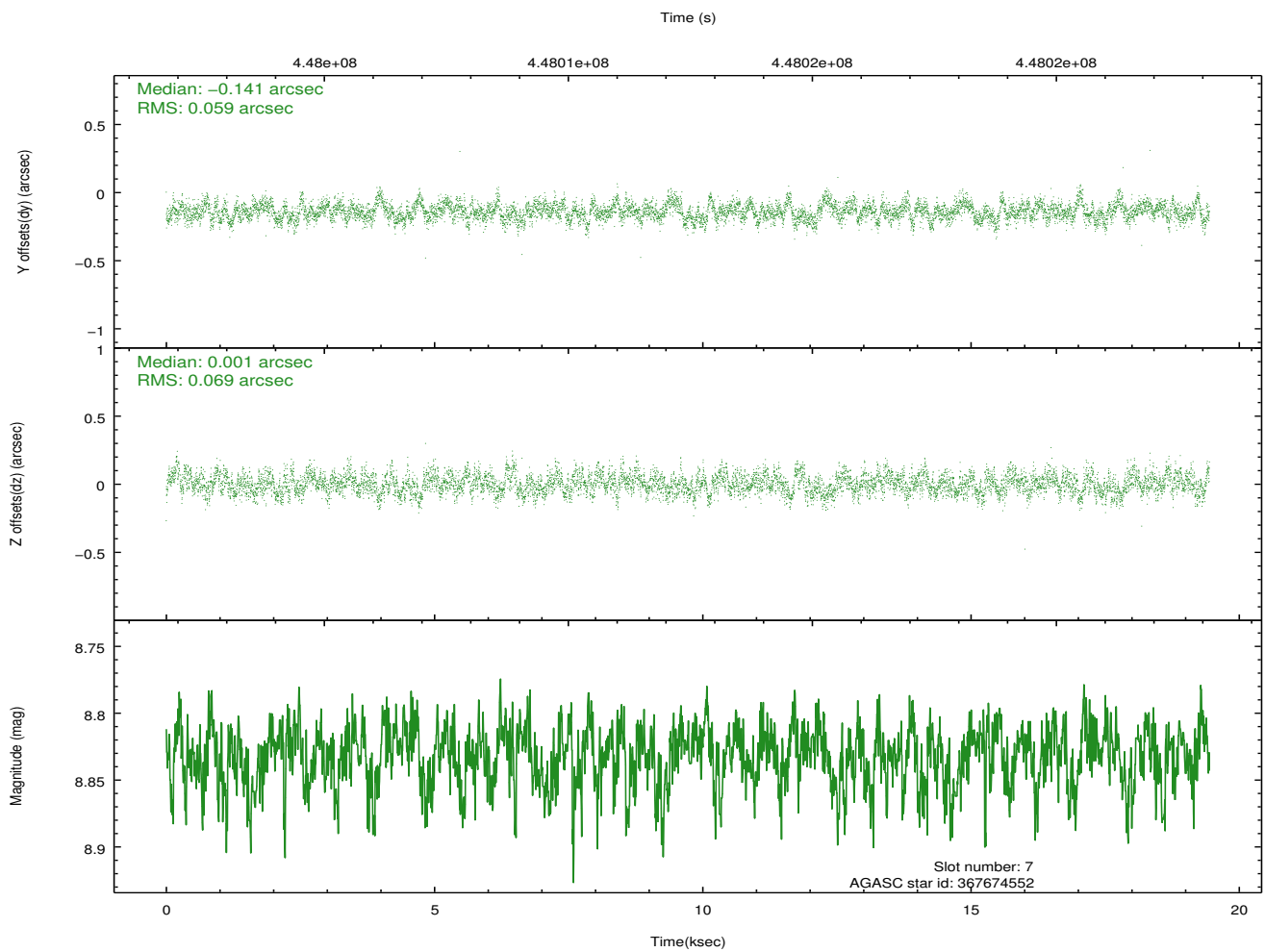
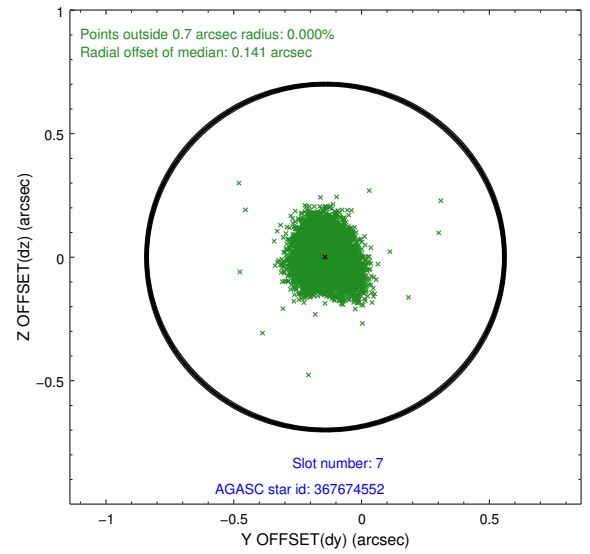
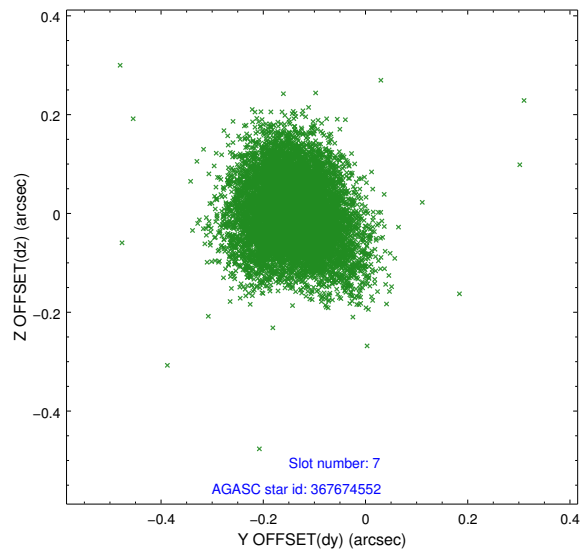
2.4.4 Slot 6



Time (s)

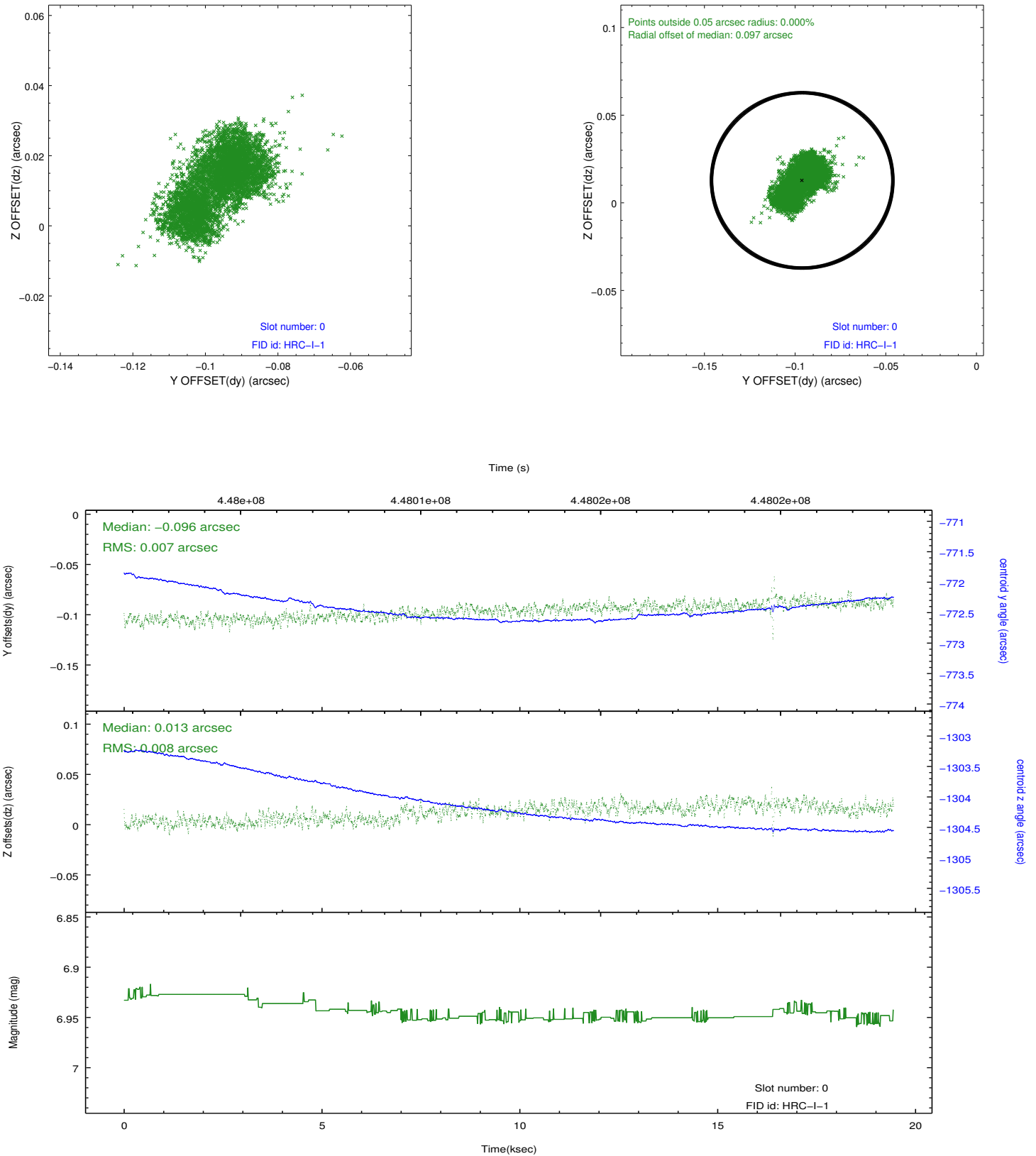


2.4.5 Slot 7

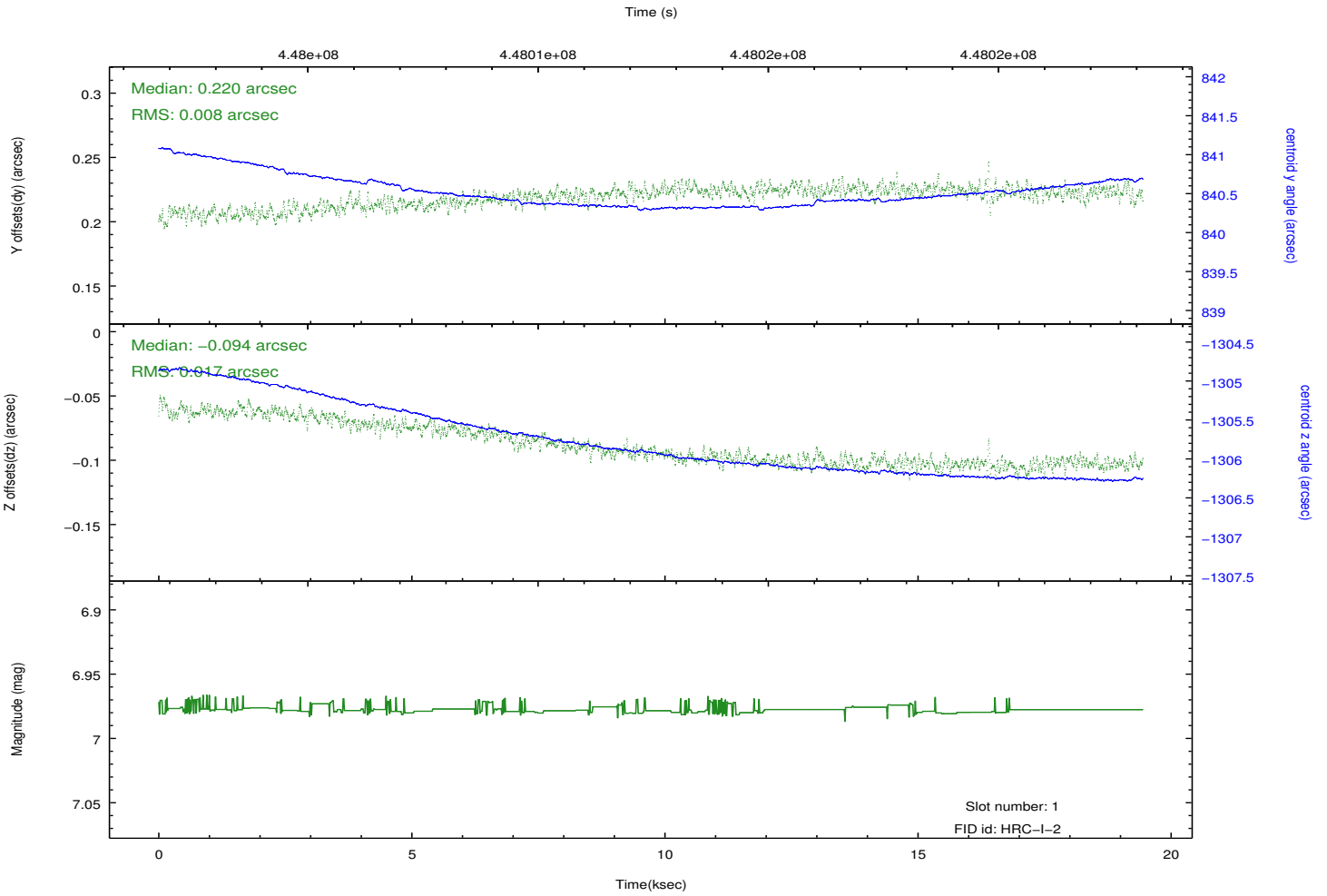
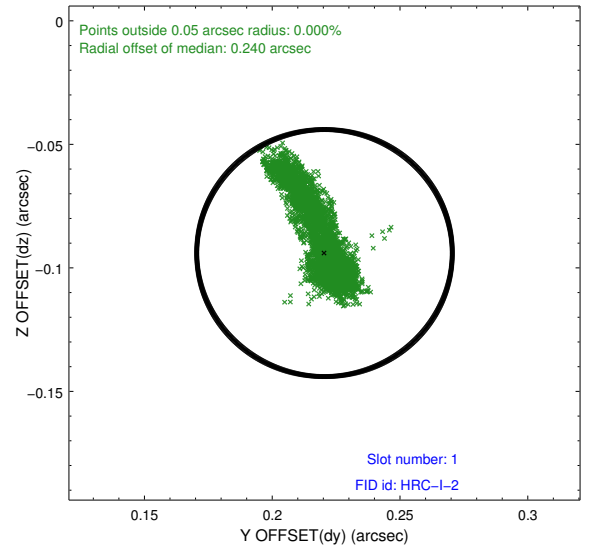
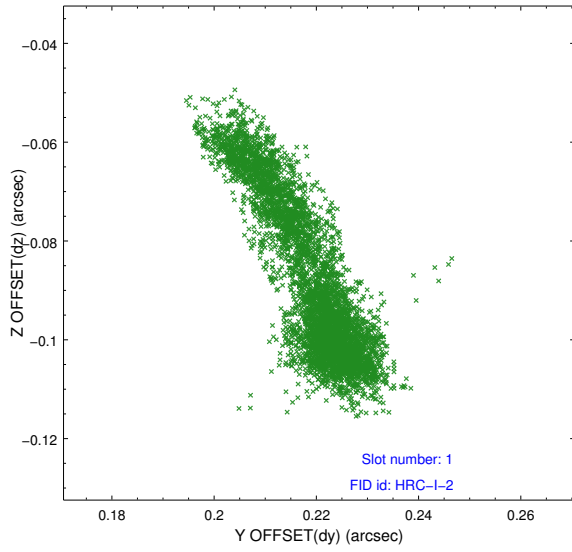


2.5 FID Slots

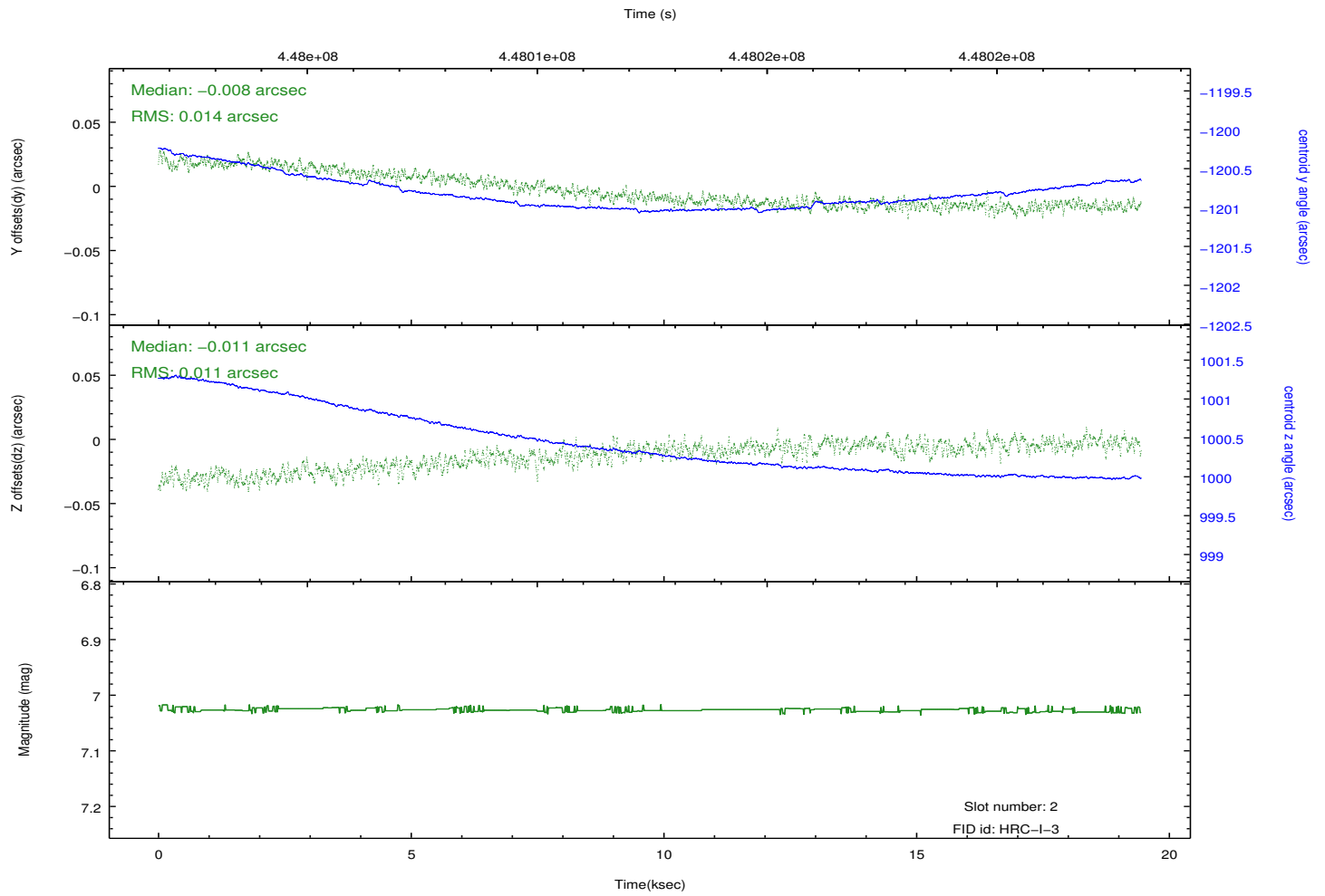
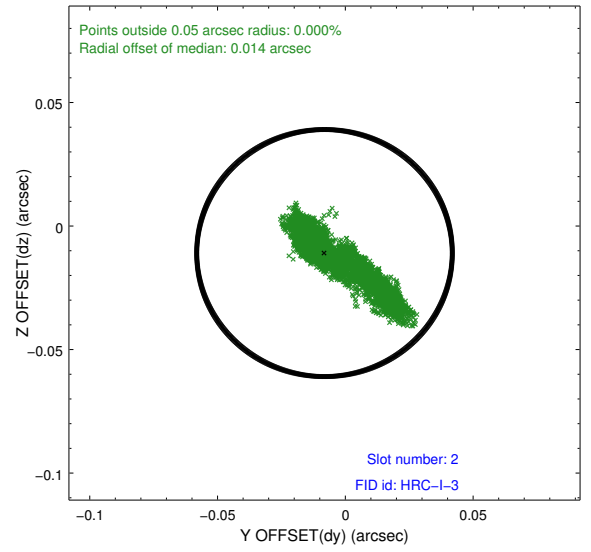
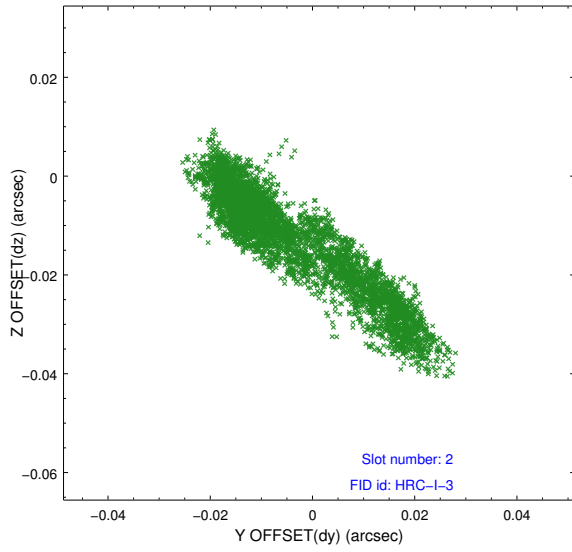
2.5.1 Slot 0



2.5.2 Slot 1



2.5.3 Slot 2



A Summary

A.1 Status

V&V Scientist	Jen Lauer
V&V Date (YYYY-MM-DD)	2012.08.06
V&V Edition	1
V&V Disposition and Status	OK
V&V Charge Time	19.447582278371

A.2 Comments

Monitor constraint met, follows obsid 13279 by 13 days.