

# V&V Reference Report

## L2 ASCDS Version : 8.4.3

Observation 13380 - L2 Version 1  
Chandra X-Ray Center

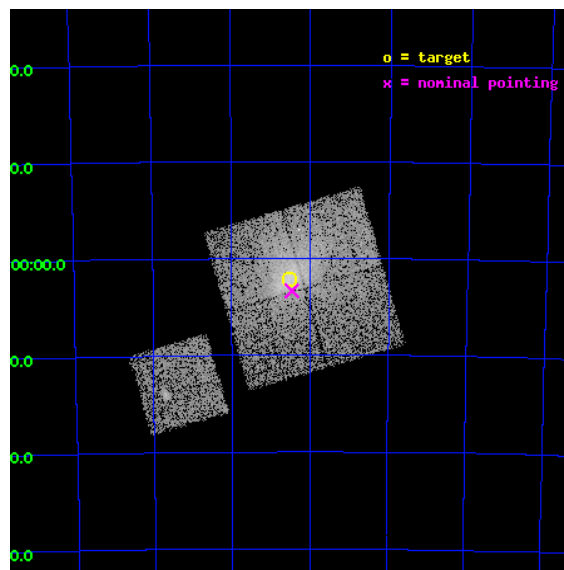
L2 Processing Date : Mar 6 2012

## Contents

<b>1</b>	<b>Front</b>	<b>2</b>
<b>2</b>	<b>OBI</b>	<b>3</b>
2.1	OBI . . . . .	3
2.1.1	Images . . . . .	3
2.1.2	Bias . . . . .	3
2.1.3	Parameters . . . . .	4
2.1.4	Events . . . . .	4
2.2	Compared Parameters . . . . .	5
2.3	Aspect . . . . .	6
2.4	Star Slots . . . . .	9
2.4.1	Slot 3 . . . . .	9
2.4.2	Slot 4 . . . . .	10
2.4.3	Slot 5 . . . . .	11
2.4.4	Slot 6 . . . . .	12
2.4.5	Slot 7 . . . . .	13
2.5	FID Slots . . . . .	14
2.5.1	Slot 0 . . . . .	14
2.5.2	Slot 1 . . . . .	15
2.5.3	Slot 2 . . . . .	16
<b>A</b>	<b>Summary</b>	<b>17</b>
A.1	Status . . . . .	17
A.2	Comments . . . . .	17

# 1 Front

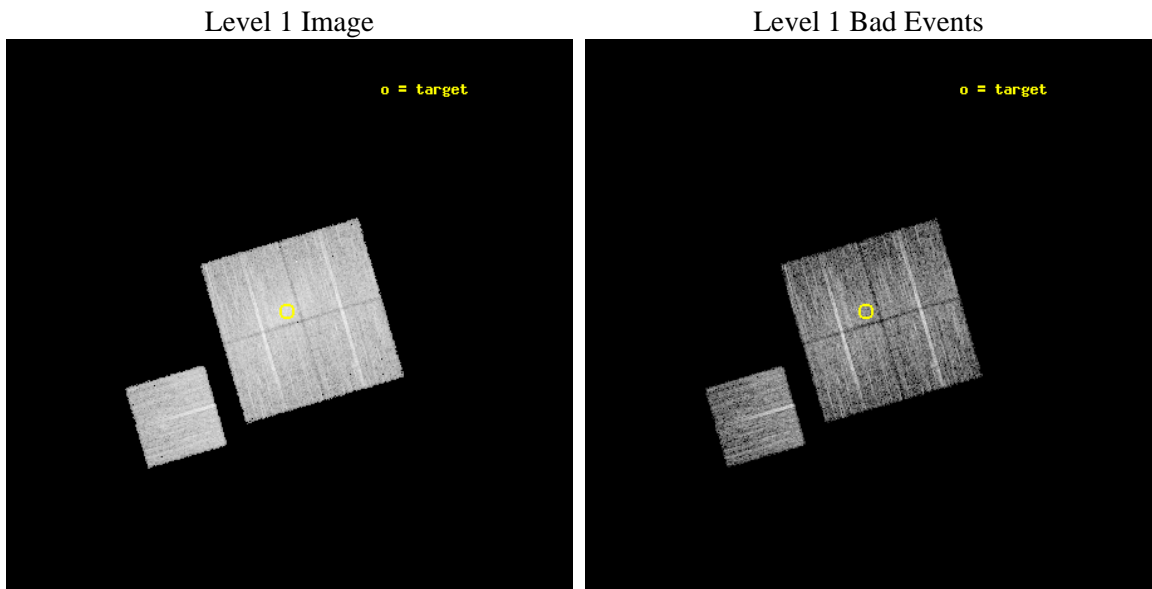
seq_num	801067	Sequence number
obs_id	13380	Observation id
title	Characterizing the Most Massive Clusters in the Local Universe	Pro
observer	Dr Stephen Murray	Principal investigator
object	G288.61-37.65	Source name
dtcycle	0	&#160
cycle	P	events from which exps? Prim/Second/Both
ra_targ	58.129167	Observer's specified target RA [deg]
dec_targ	-74.035	Observer's specified target Dec [deg]
ra_nom	58.115959846023	Nominal RA [deg]
dec_nom	-74.055898186923	Nominal Dec [deg]
roll_nom	253.72141754662	Nominal Roll [deg]
revision	1	Processing version of data
ontime	9079.9000698328	Sum of GTIs [s]
livetime	8961.2644908953	Livetime [s]
ontime0	9076.7590894103	Sum of GTIs [s]
ontime1	9079.9000698328	Sum of GTIs [s]
ontime2	9079.9000698328	Sum of GTIs [s]
ontime3	9079.9000698328	Sum of GTIs [s]
ontime6	9079.9000698328	Sum of GTIs [s]
l2events	41244	Number of level 2 events



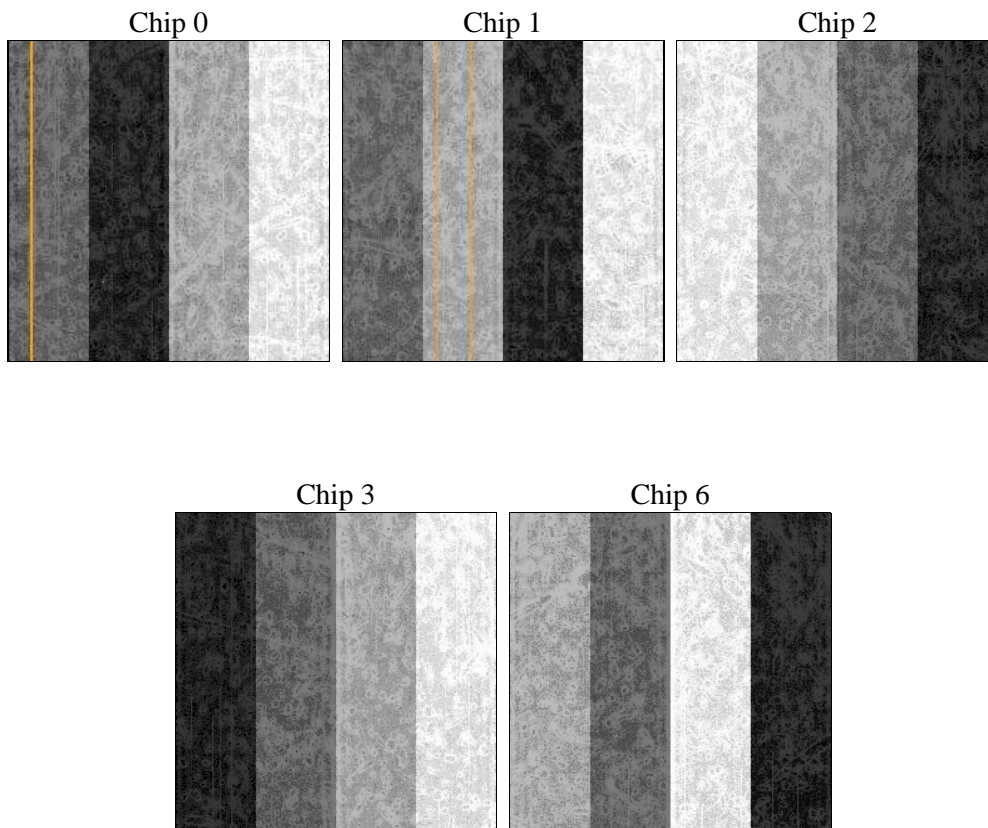
## 2 OBI

### 2.1 OBI

#### 2.1.1 Images



#### 2.1.2 Bias



### 2.1.3 Parameters

obi_num	0	Obi number	sched_exp_time	9000.000000	[s] Scheduled observation exposure time
ascdsver	8.4.3	Processing system revision	ontime	9079.9000698328	Sum of GTIs [s]
caldsver	4.4.8	&#160	ontime0	9076.7590894103	Sum of GTIs [s]
date	2012-03-06T17:18:27	Date and time of file creation	ontime1	9079.9000698328	Sum of GTIs [s]
revision	1	Processing version of data	ontime2	9079.9000698328	Sum of GTIs [s]
			ontime3	9079.9000698328	Sum of GTIs [s]
			ontime6	9079.9000698328	Sum of GTIs [s]
			l1events	279606	Number of level 1 events

### 2.1.4 Events

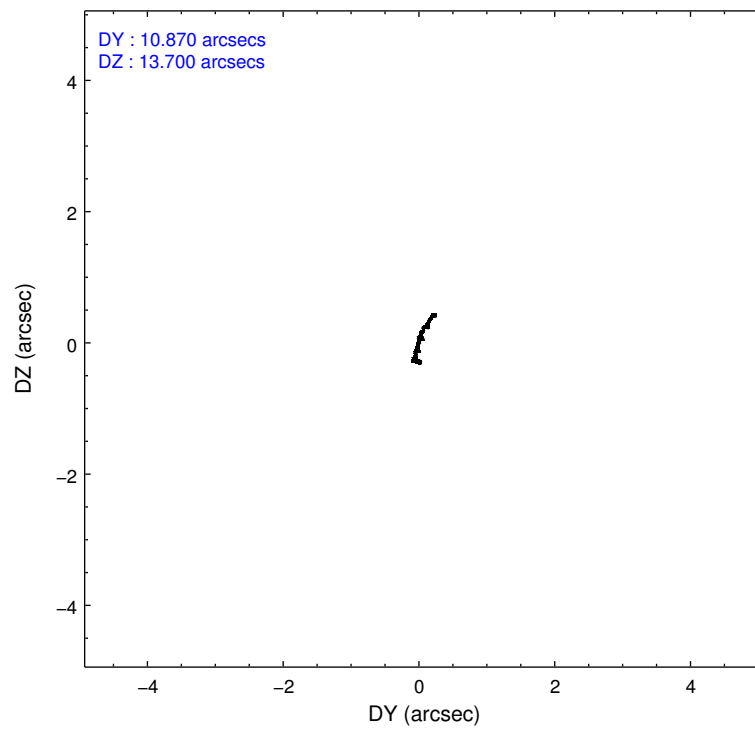
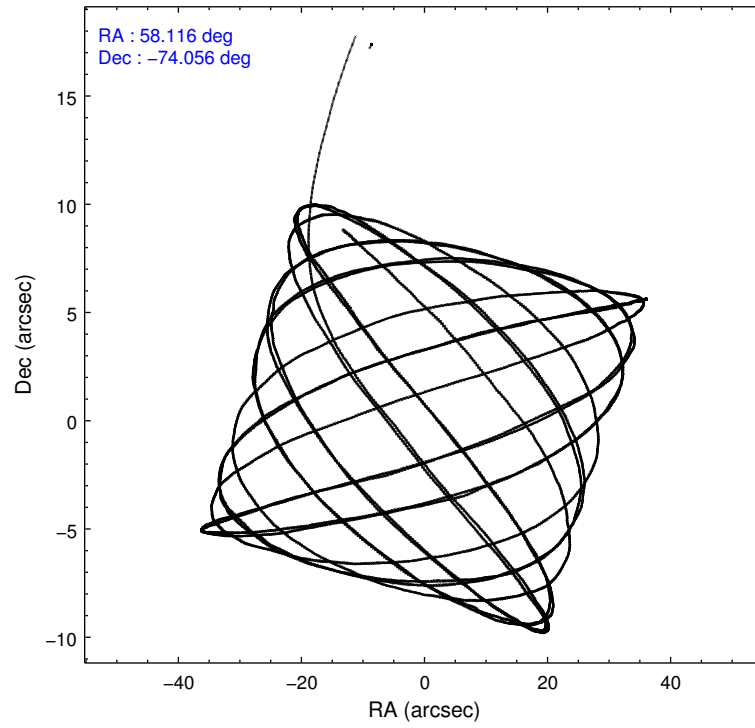
	ccd 0	ccd 1	ccd 2	ccd 3	ccd 6
level 1 events	51624	56516	55155	61464	54847
rejected events	44320	44070	47736	48229	48213
rejected %	85%	77%	86%	78%	87%

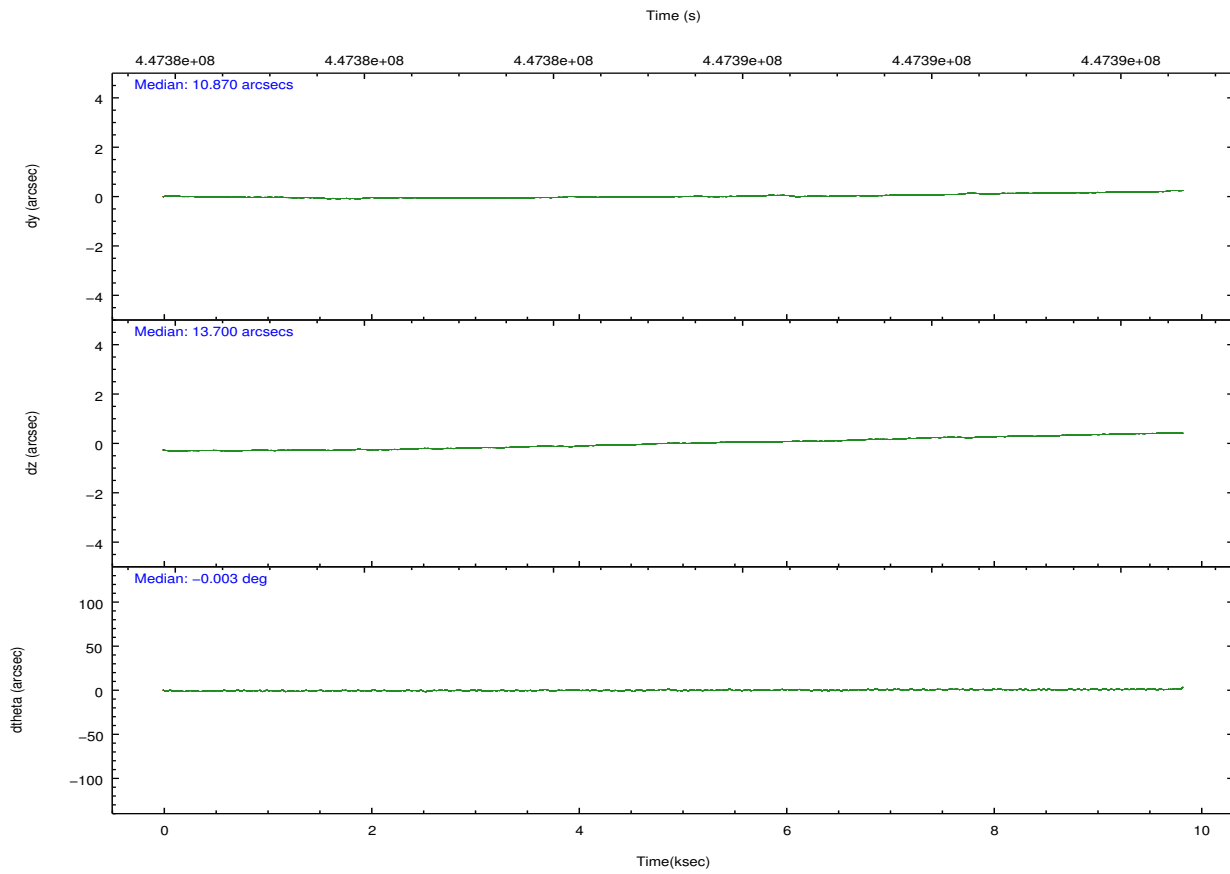
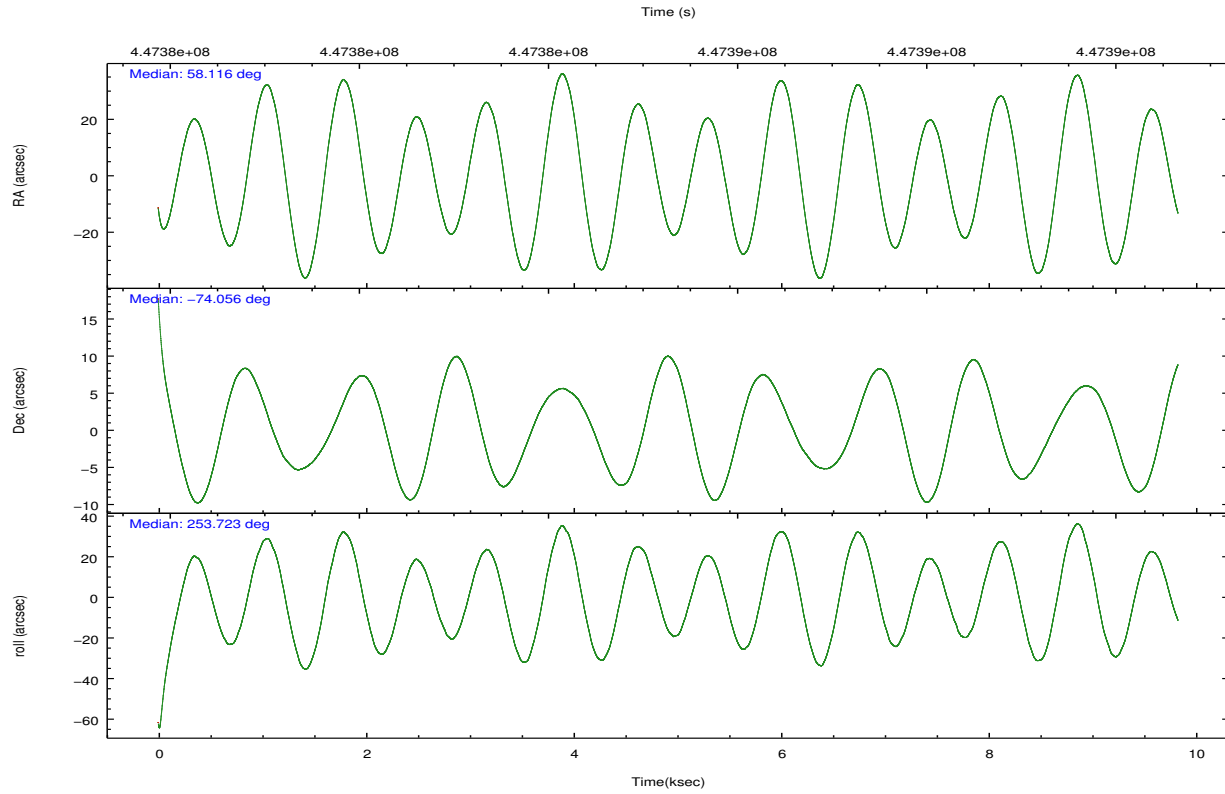
	ccd 0	ccd 1	ccd 2	ccd 3	ccd 6
grade 0 events	3017	6846	3156	8083	2421
	5%	12%	5%	13%	4%
grade 1 events	38	40	32	79	28
	0%	0%	0%	0%	0%
grade 2 events	1630	2183	1662	2070	1485
	3%	3%	3%	3%	2%
grade 3 events	670	901	672	828	670
	1%	1%	1%	1%	1%
grade 4 events	673	893	685	887	622
	1%	1%	1%	1%	1%
grade 5 events	2408	2530	2308	2660	2565
	4%	4%	4%	4%	4%
grade 6 events	1317	1627	1250	1375	1437
	2%	2%	2%	2%	2%
grade 7 events	41871	41496	45390	45482	45619
	81%	73%	82%	73%	83%

## 2.2 Compared Parameters

Parameter	Planned	Actual	Parameter	Planned	Actual
Instrument	ACIS	ACIS	Obspar format version number	7	7
Detector	ACIS-01236	ACIS-01236	Obspar file type	PREDICTED	ACTUAL
Grating	NONE	NONE	Obspar update status	NONE	UPDATED
Data mode	VFAINT	VFAINT	CCD I0 on	Y	Y
Observation mode	POINTING	POINTING	CCD I1 on	Y	Y
[deg] Pointing RA	58.091837	58.11595984602283	CCD I2 on	Y	Y
[deg] Pointing Dec	-74.029197	-74.05589818692323	CCD I3 on	Y	Y
[deg] Pointing Roll	253.489596	253.7214175466212	CCD S0 on	N	N
[mm] SIM focus pos	-0.782348	-0.7809083437167272	CCD S1 on	N	N
[mm] SIM defocus	0	0.001439871863259334	CCD S2 on	O1	Y
[mm] SIM translation stage pos	-231.592463	-231.5960967419932	CCD S3 on	N	N
[mm] SIM translation stage offset	-2	-1.996356260936523	CCD S4 on	N	N
[s] Observation start time (MET)	447381171.184000	447379442.09303	CCD S5 on	N	N
Observation start date	2012-03-06T00:31:45	2012-03-06T00:04:02	Number of optional ACIS chips dropped	0	0
[s] Observation end time (MET)	447390171.184000	447390980.00614	On-chip summing requested	N	N
Observation end date	2012-03-06T03:01:45	2012-03-06T03:16:20	Subarray requested	NONE	NONE
Read mode	TIMED	TIMED	Alternating exposures requested	N	N
			[s] Primary exposure time	0.000000	3.1

## 2.3 Aspect



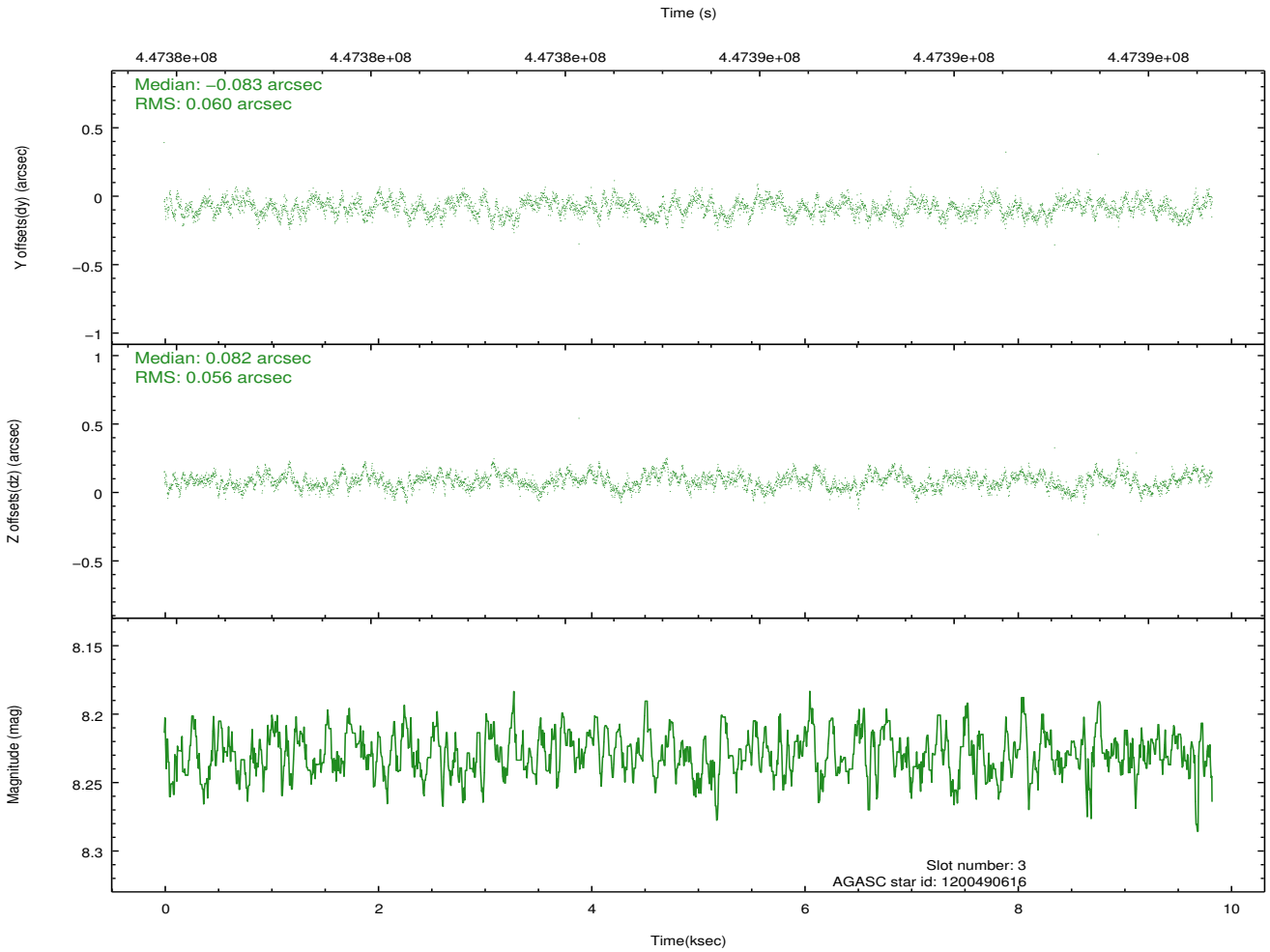
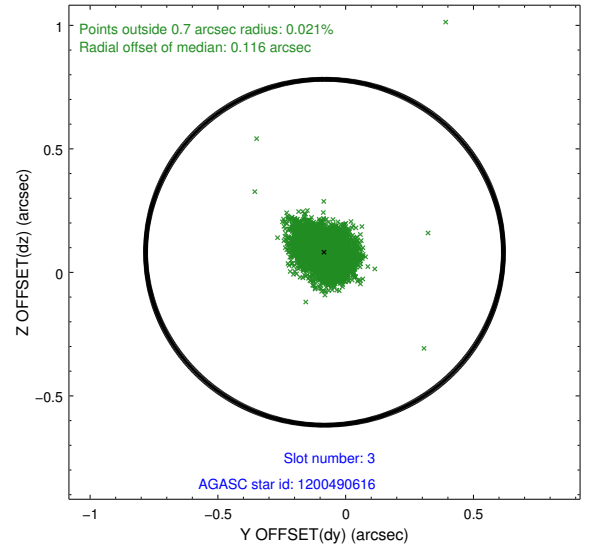
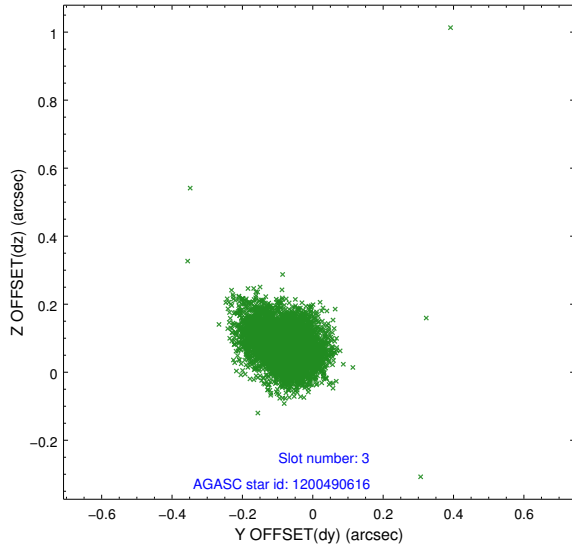


### Slot Statistics

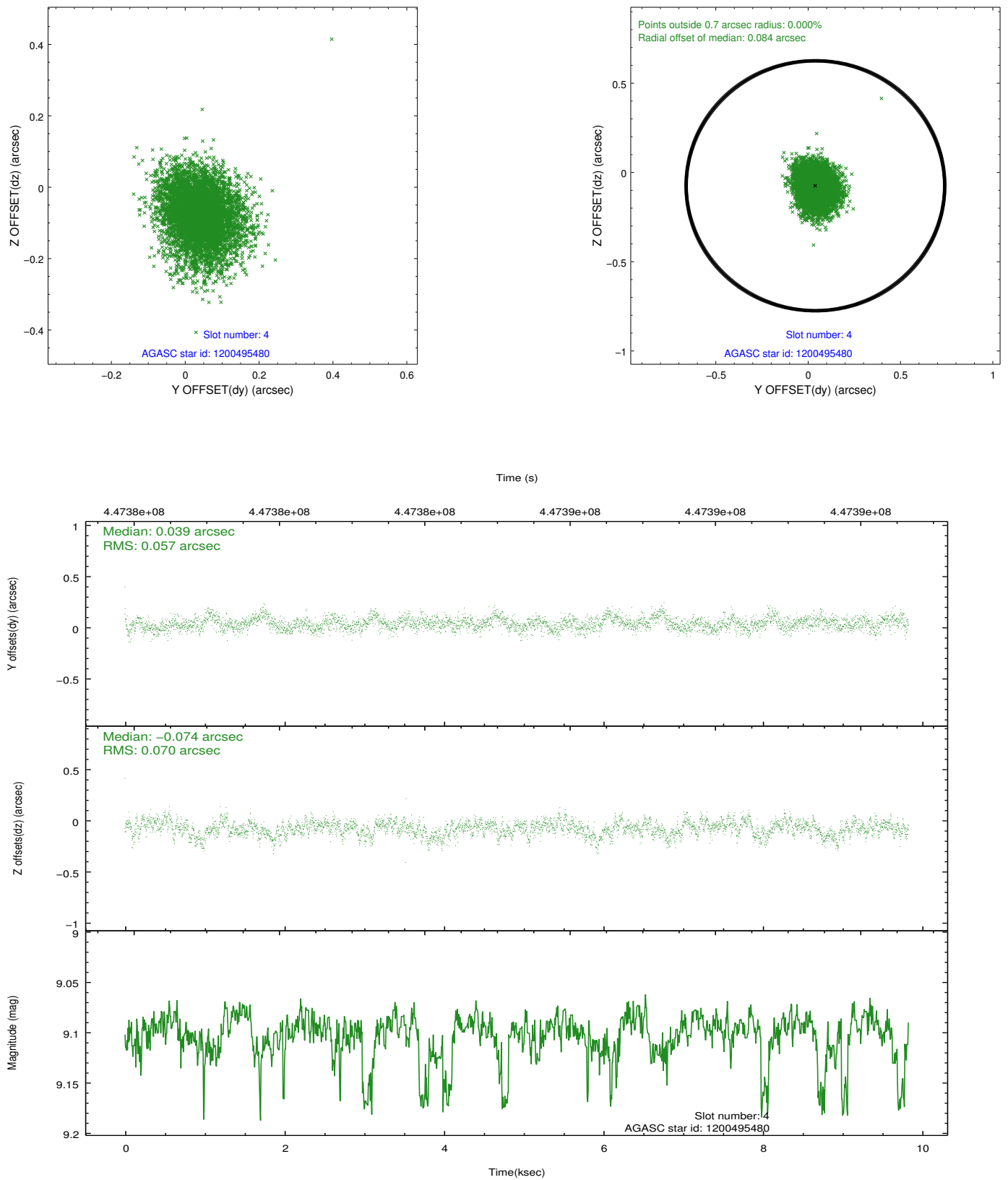
slot	status	id	mag	n_pts	med_dy	med_dz	dr1	dr2	ra	dec	mean_y	mean_z
0	FID	ACIS-I-1	7.08	2398	0.062	-0.028	0.013	0.021	0.000000	0.000000	928.72	-878.19
1	FID	ACIS-I-5	7.07	2398	-0.234	0.059	0.007	0.011	0.000000	0.000000	-1819.42	1019.05
2	FID	ACIS-I-6	7.08	2398	0.081	0.040	0.012	0.019	0.000000	0.000000	393.65	1664.19
3	GUIDE	1200490616	8.23	4795	-0.083	0.082	0.086	0.135	56.653695	-74.507952	2060.49	-830.73
4	GUIDE	1200495480	9.10	4776	0.039	-0.074	0.095	0.158	58.345501	-73.948642	-347.60	159.73
5	GUIDE	1200497160	9.58	4793	-0.081	0.135	0.114	0.179	58.458241	-73.593269	-1609.29	-88.02
6	GUIDE	1200497680	9.14	4789	0.033	-0.081	0.085	0.135	58.997525	-73.555517	-1890.97	402.45
7	GUIDE	1200498808	9.37	4789	0.094	-0.055	0.108	0.173	58.897407	-73.949441	-497.95	688.93

## 2.4 Star Slots

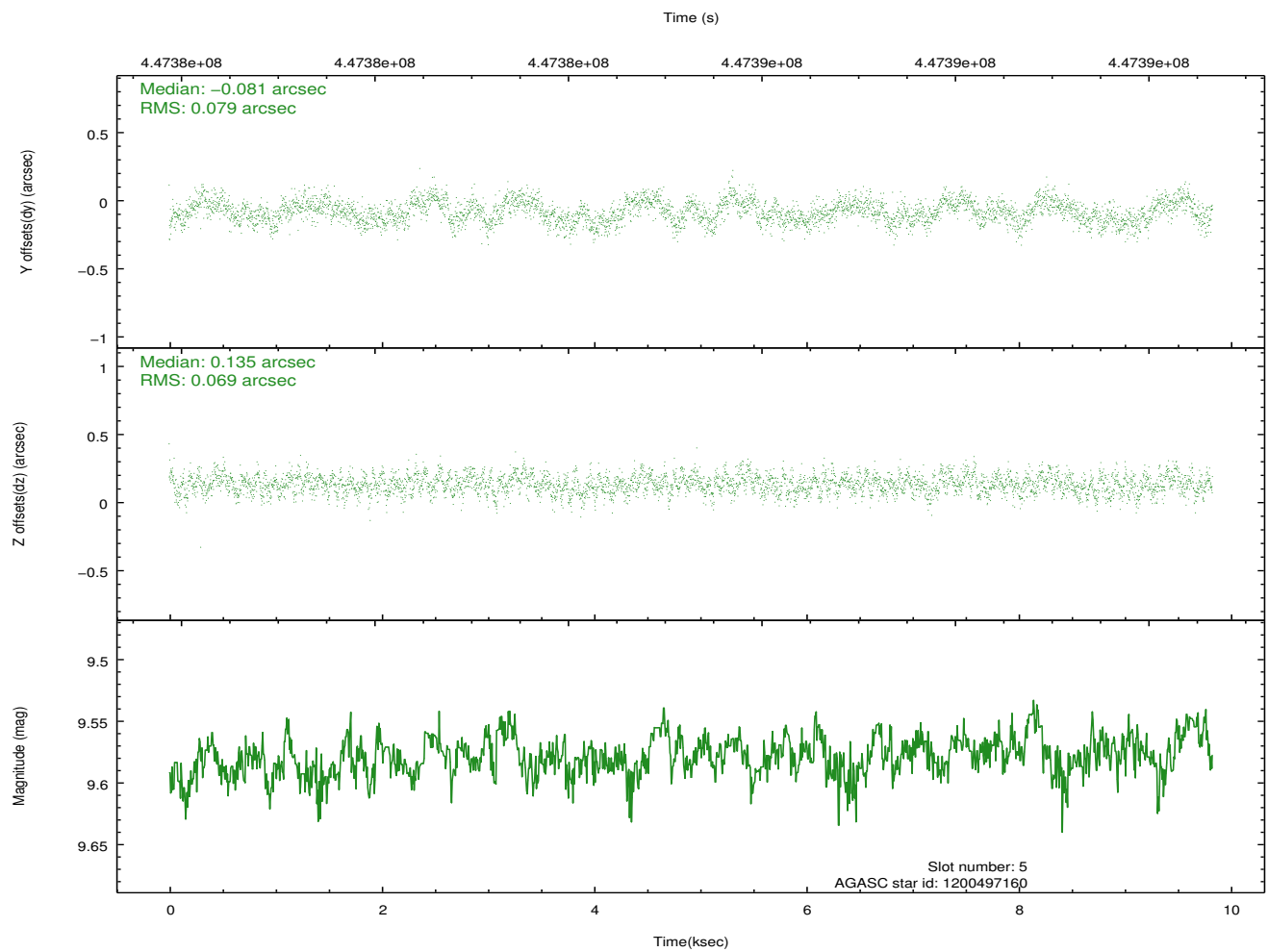
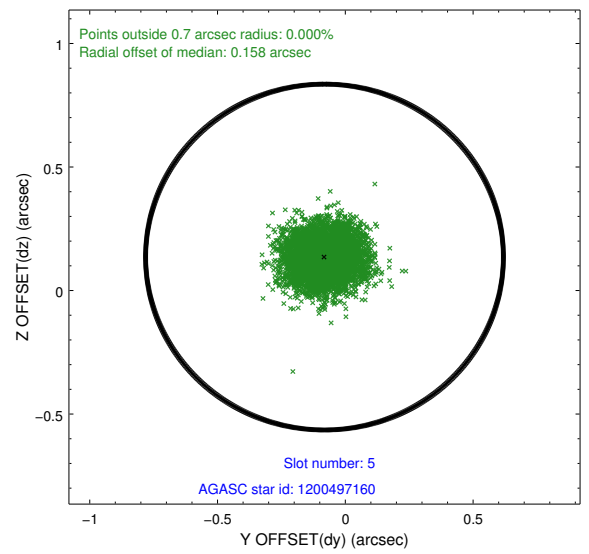
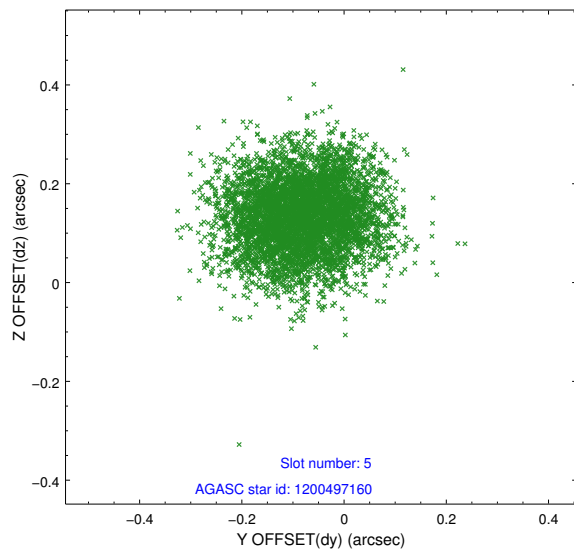
### 2.4.1 Slot 3



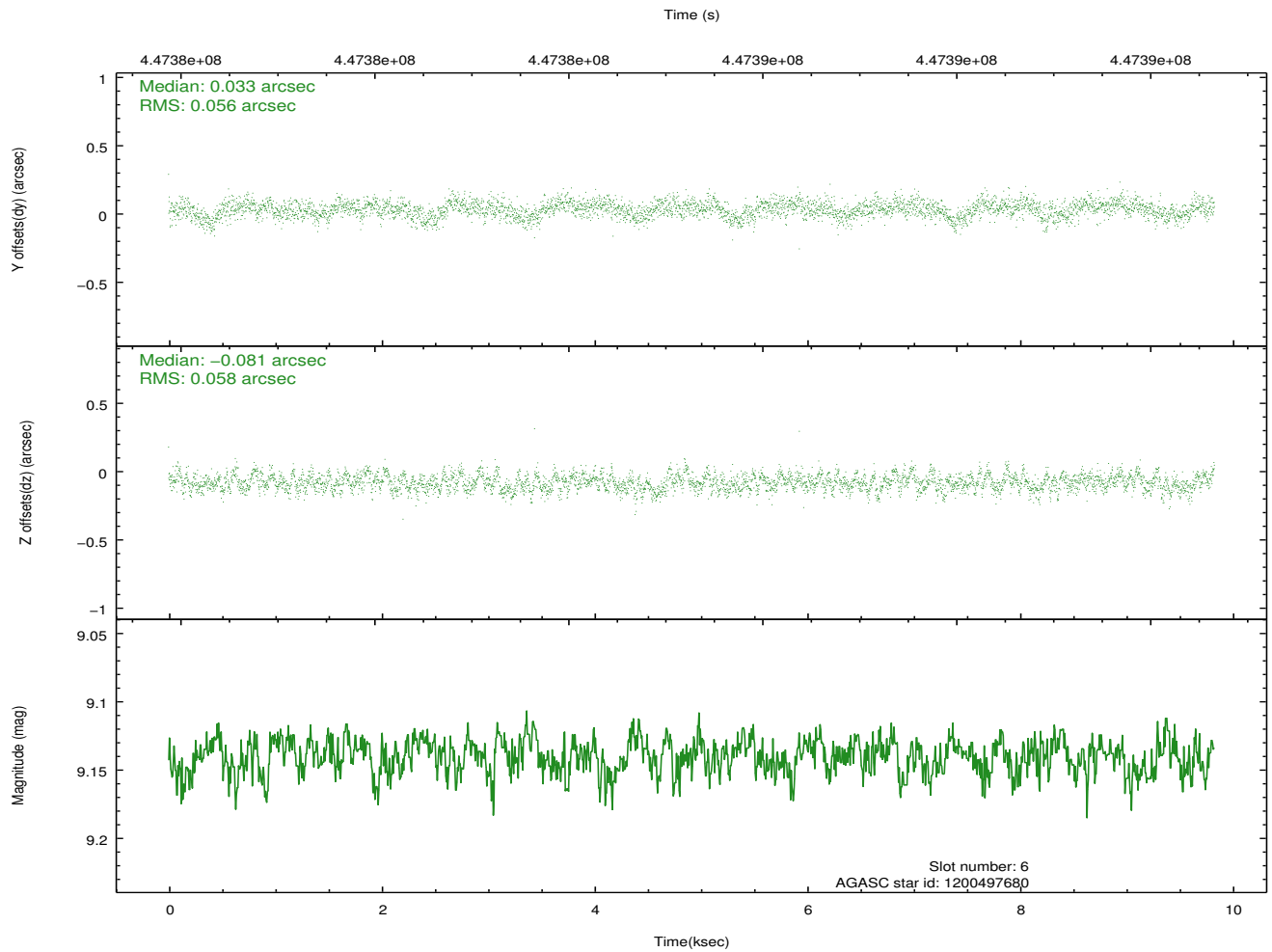
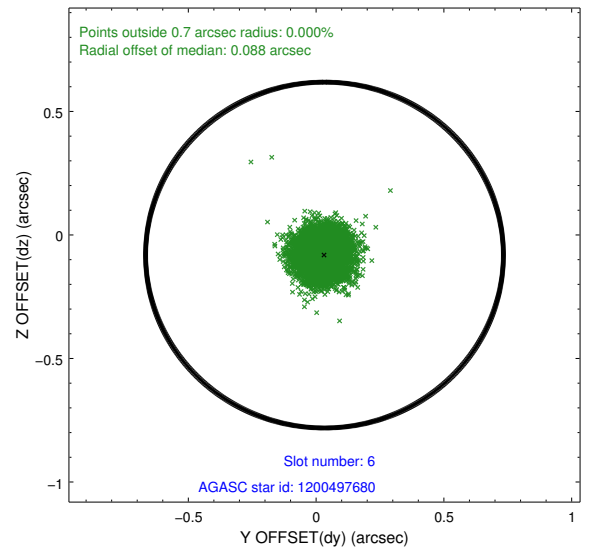
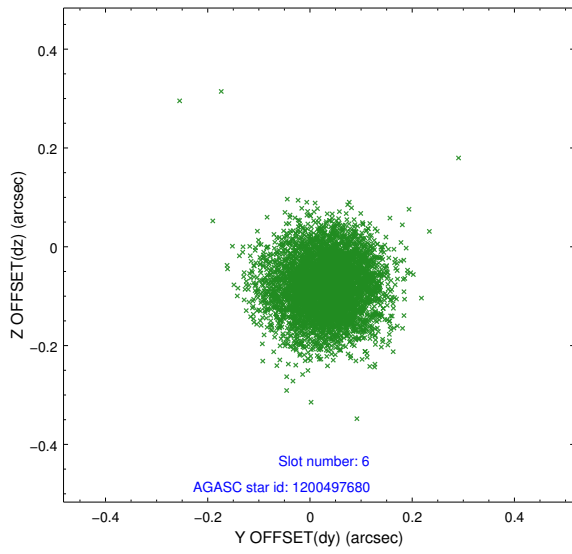
## 2.4.2 Slot 4



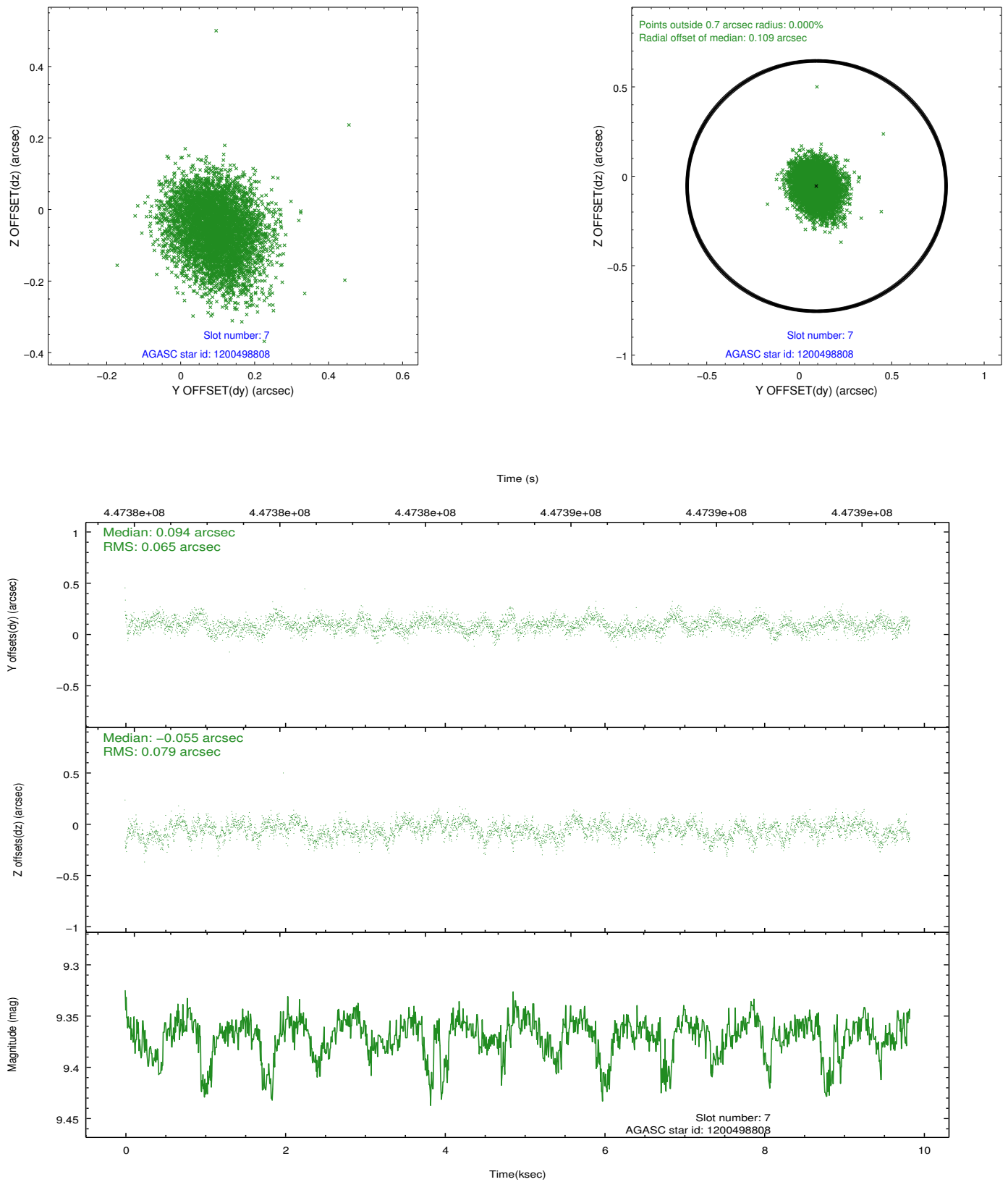
### 2.4.3 Slot 5



## 2.4.4 Slot 6

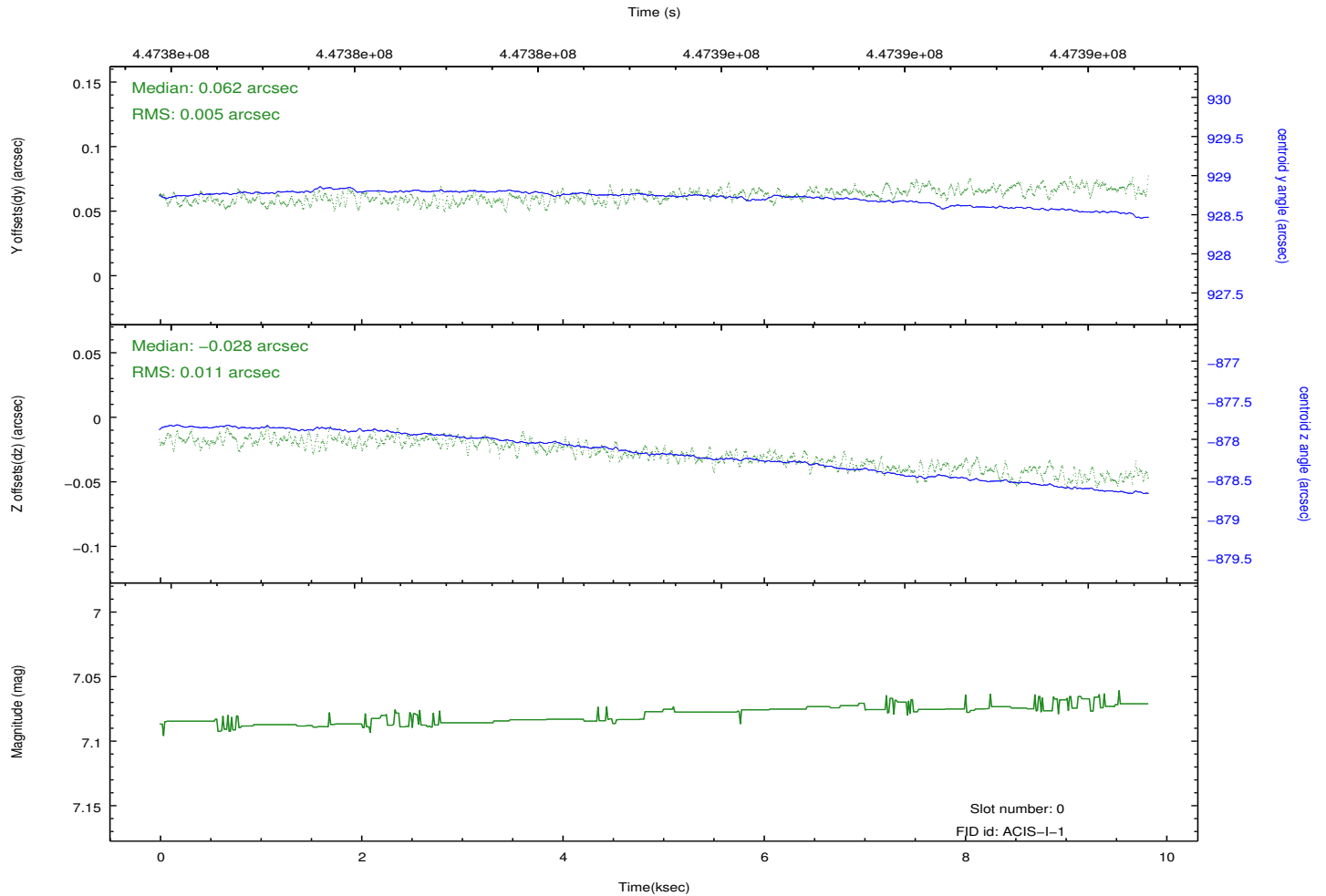
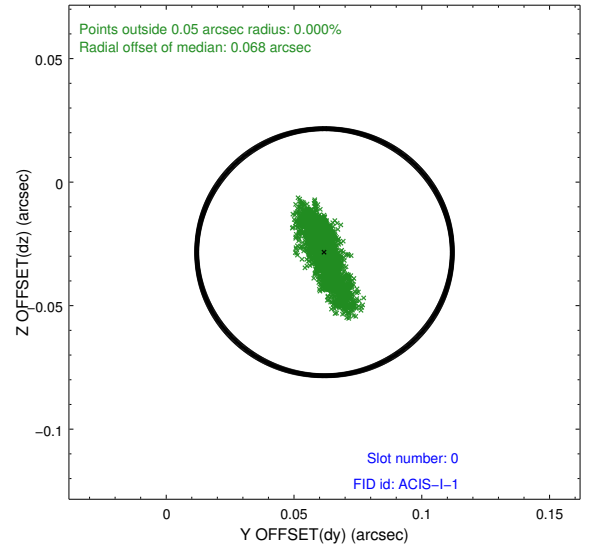
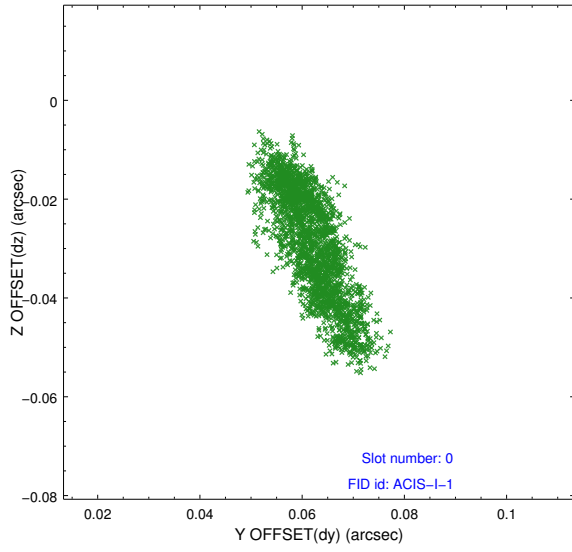


## 2.4.5 Slot 7

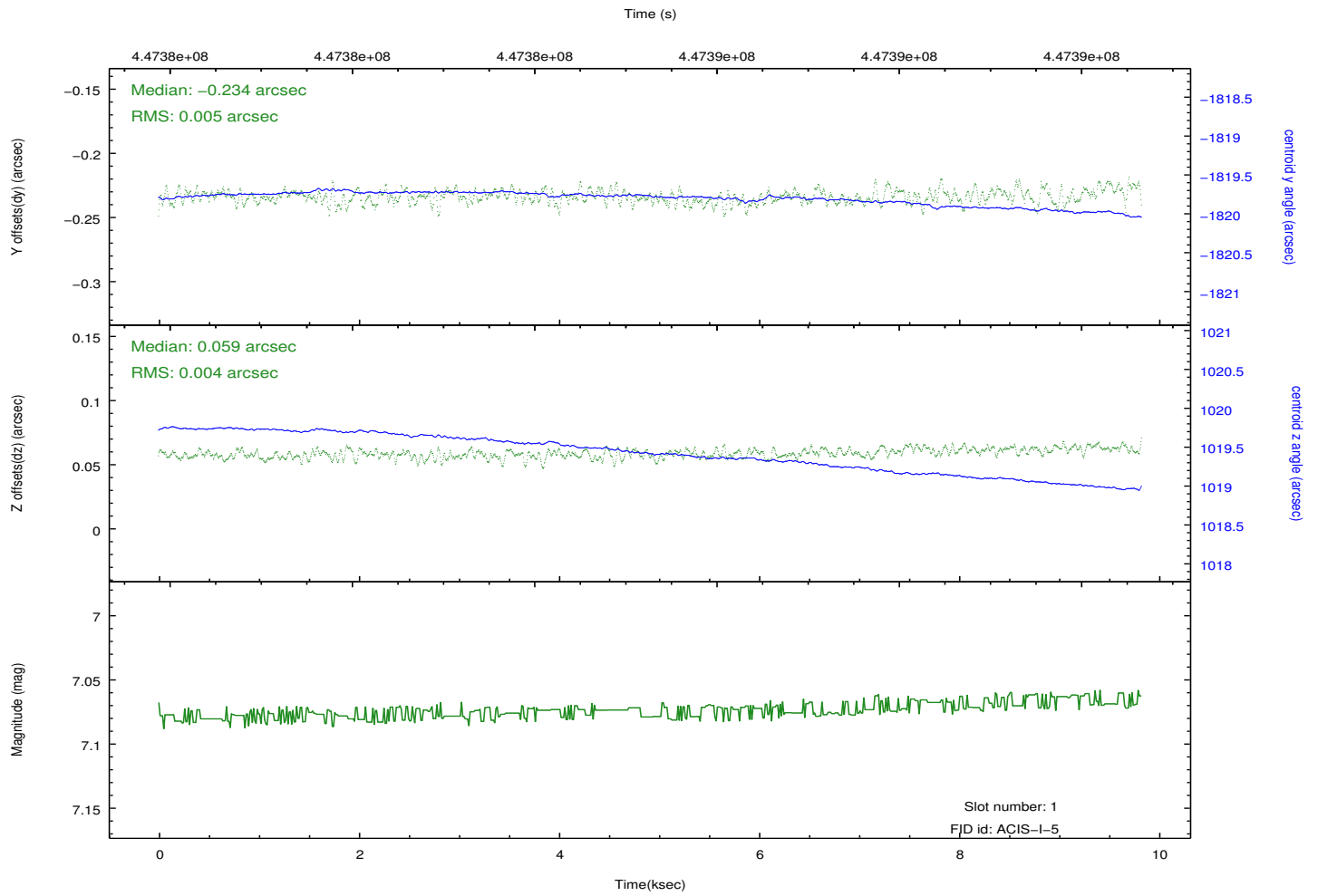
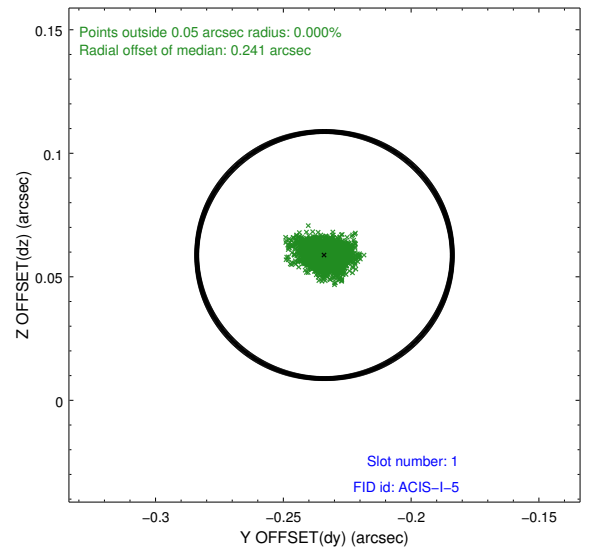
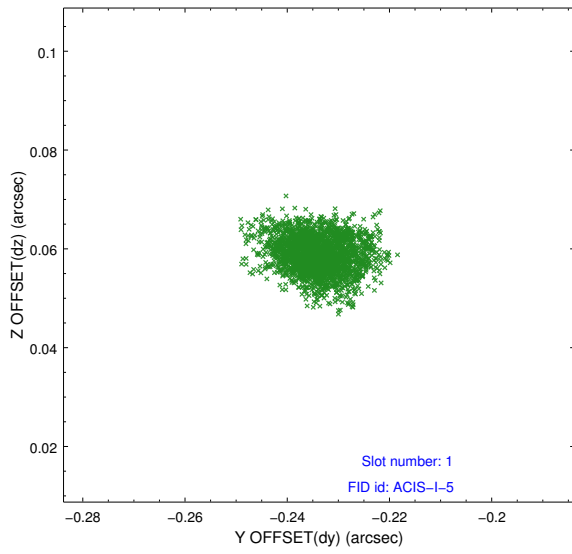


## 2.5 FID Slots

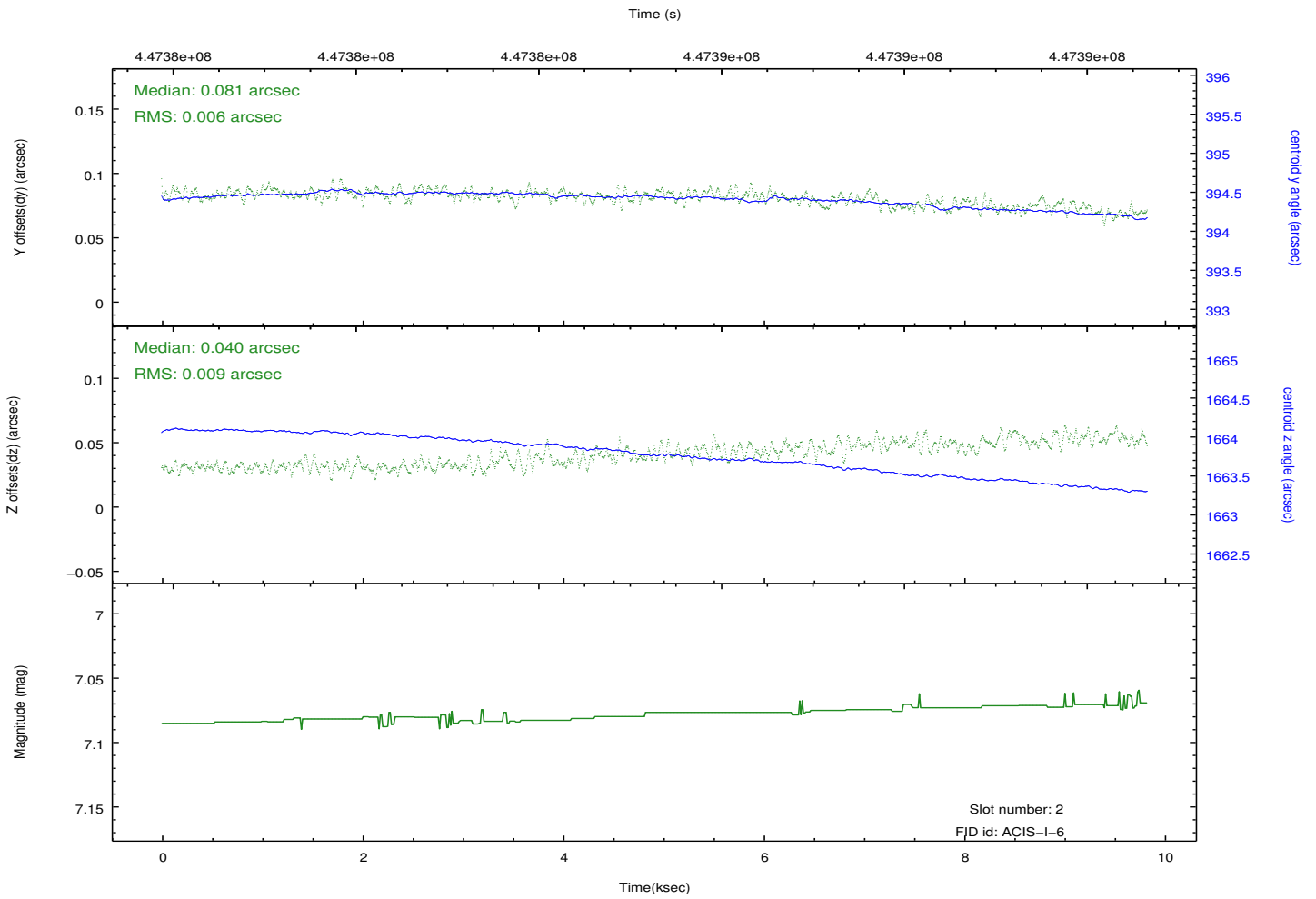
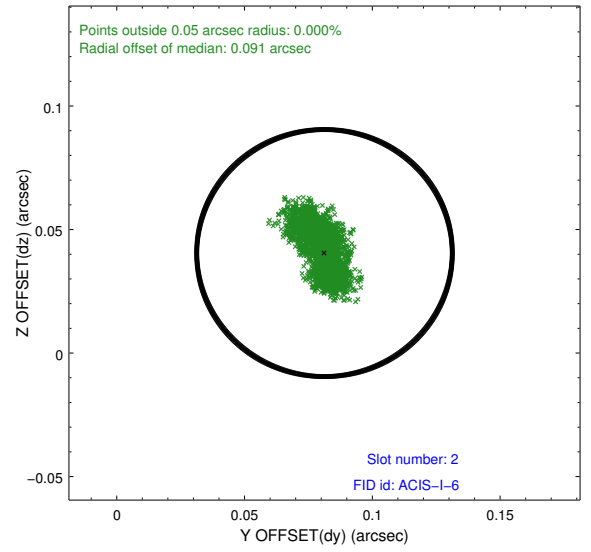
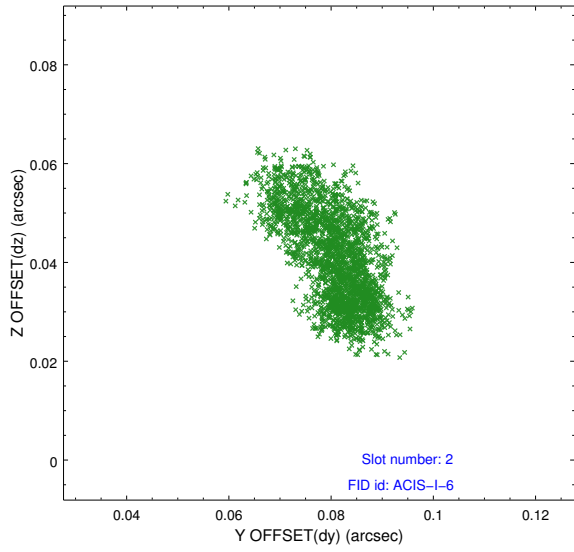
### 2.5.1 Slot 0



## 2.5.2 Slot 1



### 2.5.3 Slot 2



## A Summary

### A.1 Status

V&V Scientist	Jen Lauer
V&V Date (YYYY-MM-DD)	2012.03.06
V&V Edition	1
V&V Disposition and Status	OK
V&V Charge Time	9.0799000698328

### A.2 Comments