

V&V Reference Report

L2 ASCDS Version : 8.4.5

Observation 13780 - L2 Version 2
Chandra X-Ray Center

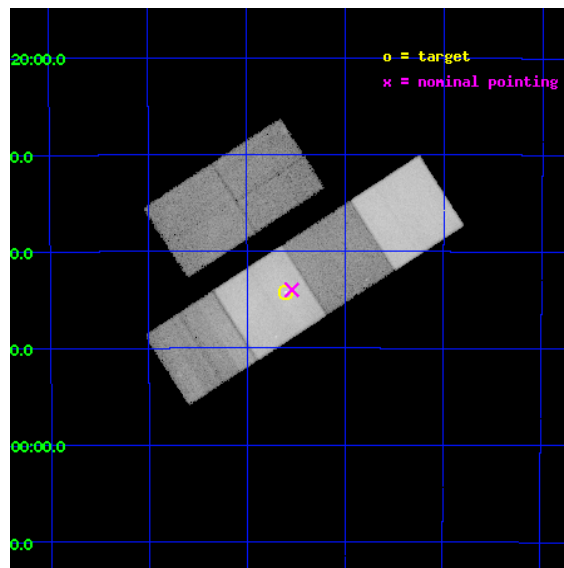
L2 Processing Date : Sep 6 2012

Contents

1	Front	2
2	OBI	3
2.1	OBI	3
2.1.1	Images	3
2.1.2	Bias	3
2.1.3	Parameters	4
2.1.4	Events	4
2.2	Compared Parameters	5
2.3	Aspect	6
2.4	Star Slots	9
2.4.1	Slot 3	9
2.4.2	Slot 4	10
2.4.3	Slot 5	11
2.4.4	Slot 6	12
2.4.5	Slot 7	13
2.5	FID Slots	14
2.5.1	Slot 0	14
2.5.2	Slot 1	15
2.5.3	Slot 2	16
A	Summary	17
A.1	Status	17
A.2	Comments	17

1 Front

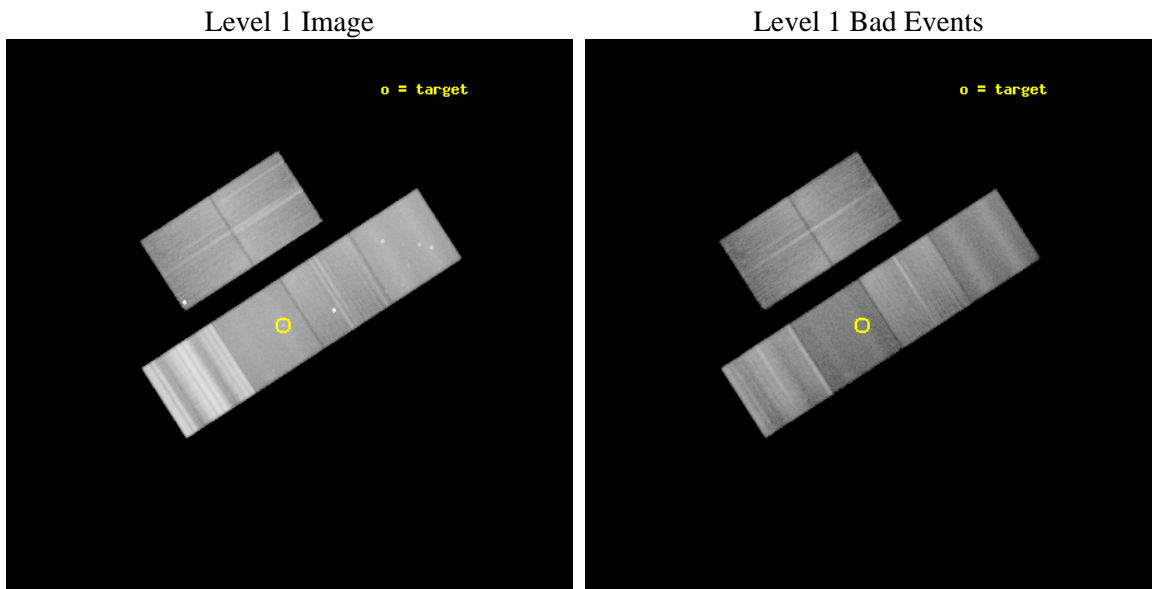
seq_num	501612	Sequence number
obs_id	13780	Observation id
title	Exploring the fine morphology of the newly discovered nebula surrounding PSR J0855-4644	Proposal title
observer	Dr Fabio Acero	Principal investigator
object	PSR J0855-4644	Source name
dtcycle	0	
cycle	P	events from which exps? Prim/Second/Both
ra_targ	133.901667	Observer's specified target RA [deg]
dec_targ	-46.737389	Observer's specified target Dec [deg]
ra_nom	133.88541012582	Nominal RA [deg]
dec_nom	-46.73318494837	Nominal Dec [deg]
roll_nom	147.09885882637	Nominal Roll [deg]
revision	2	Processing version of data
ontime	38476.479932666	Sum of GTIs [s]
livetime	37989.267576004	Livetime [s]
ontime2	38476.520972669	Sum of GTIs [s]
ontime3	38476.356812656	Sum of GTIs [s]
ontime5	38476.438892663	Sum of GTIs [s]
ontime6	38473.156882226	Sum of GTIs [s]
ontime7	38476.479932666	Sum of GTIs [s]
ontime8	38476.315772653	Sum of GTIs [s]
l2events	642618	Number of level 2 events



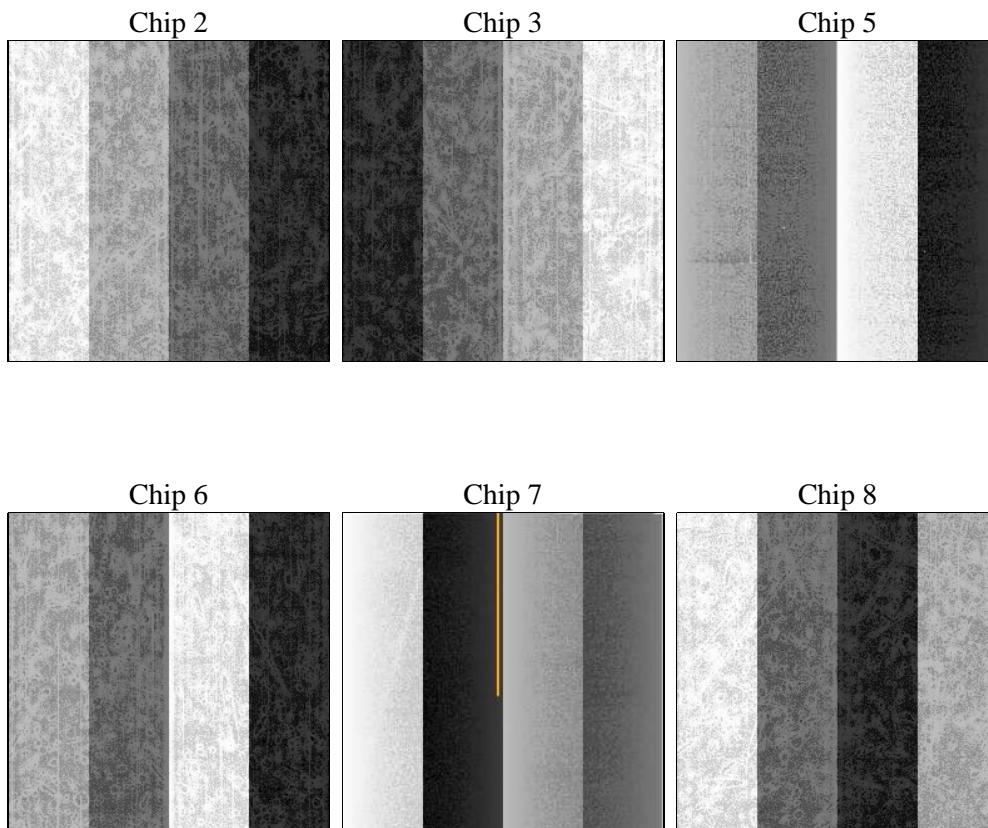
2 OBI

2.1 OBI

2.1.1 Images



2.1.2 Bias



2.1.3 Parameters

obi_num	0	Obi number	sched_exp_time	39657.000000	[s] Scheduled observation exposure time
ascdsver	8.4.5	Processing system revision	ontime	38476.479932666	Sum of GTIs [s]
caldsver	4.5.1.1	 	ontime2	38476.520972669	Sum of GTIs [s]
date	2012-09-06T15:36:53	Date and time of file creation	ontime3	38476.356812656	Sum of GTIs [s]
revision	2	Processing version of data	ontime5	38476.438892663	Sum of GTIs [s]
			ontime6	38473.156882226	Sum of GTIs [s]
			ontime7	38476.479932666	Sum of GTIs [s]
			ontime8	38476.315772653	Sum of GTIs [s]
			l1events	3450896	Number of level 1 events

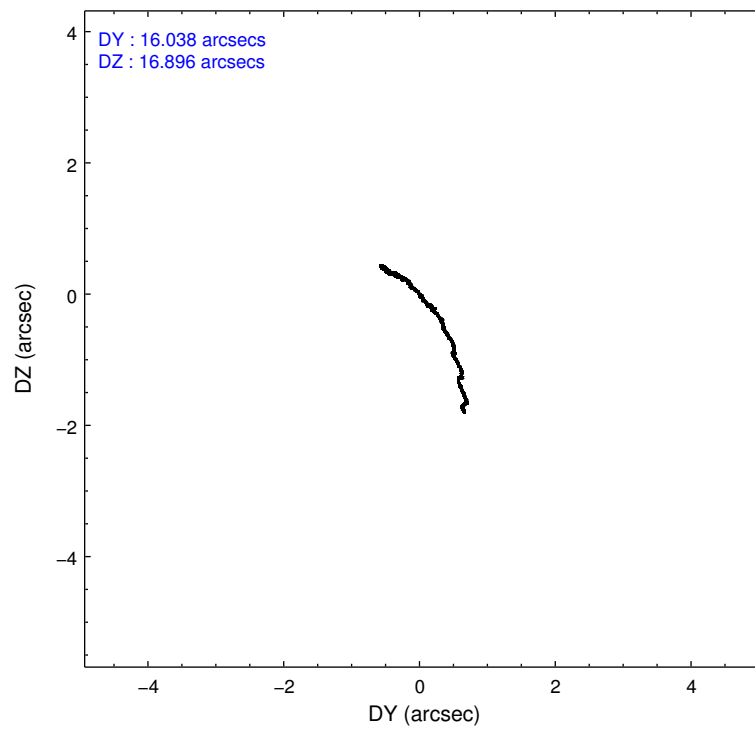
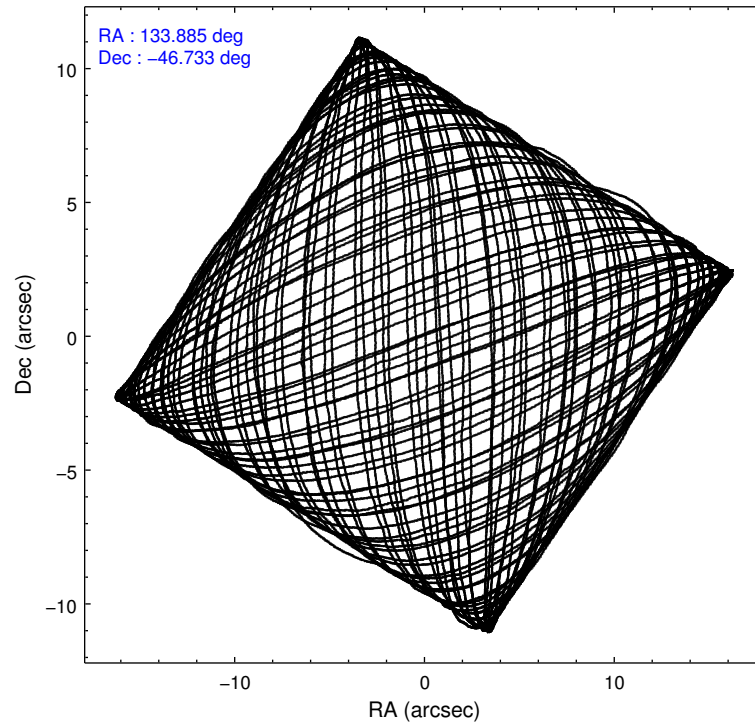
2.1.4 Events

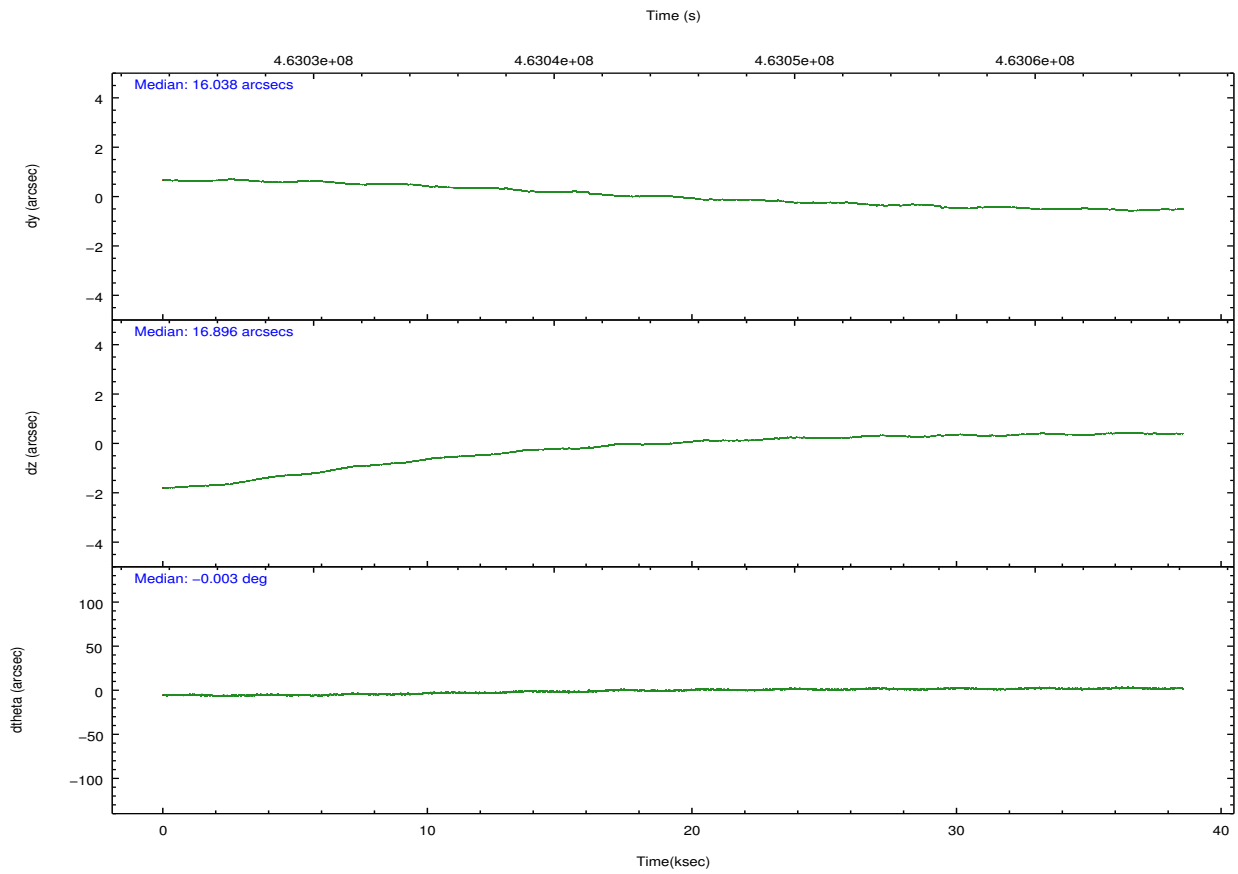
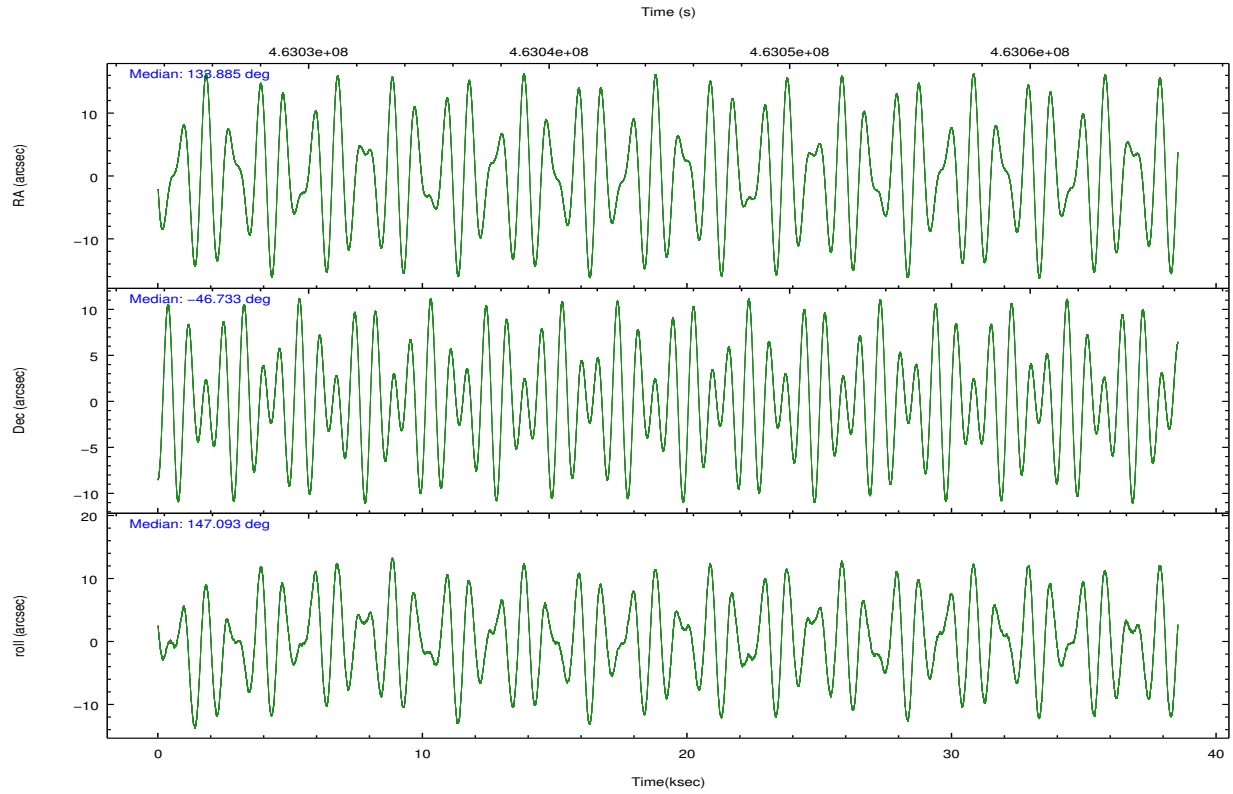
	ccd 2	ccd 3	ccd 5	ccd 6	ccd 7	ccd 8		ccd 2	ccd 3	ccd 5	ccd 6	ccd 7	ccd 8
level 1 events	405586	353792	511444	412895	409681	1357498	grade 0 events	34275	31275	61658	36196	48648	344603
rejected events	337875	303349	241438	338201	180246	387695		8%	8%	12%	8%	11%	25%
rejected %	83%	85%	47%	81%	43%	28%	grade 1 events	387	283	1761	279	951	2892
								0%	0%	0%	0%	0%	0%
							grade 2 events	17503	8245	80106	26423	56608	107450
								4%	2%	15%	6%	13%	7%
							grade 3 events	2889	2983	15734	3046	20267	187650
								0%	0%	3%	0%	4%	13%
							grade 4 events	6281	2876	15069	2993	20507	171323
								1%	0%	2%	0%	5%	12%
							grade 5 events	9274	10568	31380	10582	32896	25511
								2%	2%	6%	2%	8%	1%
							grade 6 events	6851	5117	97705	6121	83645	160168
								1%	1%	19%	1%	20%	11%
							grade 7 events	328126	292445	208031	327255	146159	357901
								80%	82%	40%	79%	35%	26%

2.2 Compared Parameters

Parameter	Planned	Actual	Parameter	Planned	Actual
Instrument	ACIS	ACIS	Obspar format version number	7	7
Detector	ACIS-235678	ACIS-235678	Obspar file type	PREDICTED	ACTUAL
Grating	NONE	NONE	Obspar update status	OVERRIDE	OVERRIDE
Data mode	FAINT	FAINT	Number of optional ACIS chips dropped	0	0
Observation mode	POINTING	POINTING	On-chip summing requested	N	N
[deg] Pointing RA	133.925294	133.8854101258185	Subarray requested	NONE	NONE
[deg] Pointing Dec	-46.734191	-46.7331849483697	Alternating exposures requested	N	N
[deg] Pointing Roll	146.971274	147.0988588263671	[s] Primary exposure time	3.2	3.2
[mm] SIM focus pos	-0.6828225247311905	-0.6828225247311905			
[mm] SIM defocus	0.001444942264670179	0.001444942264670179			
[mm] SIM translation stage pos	-190.1400660498719	-190.1400660498719			
[mm] SIM translation stage offset	0.007542945904702947	0.007542945904702947			
[s] Observation start time (MET)	463025677.184000	463025677.184			
Observation start date	2012-09-03T02:13:30	2012-09-03T02:14:37			
[s] Observation end time (MET)	463064223.900000	463064223.9			
Observation end date	2012-09-03T12:57:03	2012-09-03T12:57:03			
Read mode	TIMED	TIMED			

2.3 Aspect



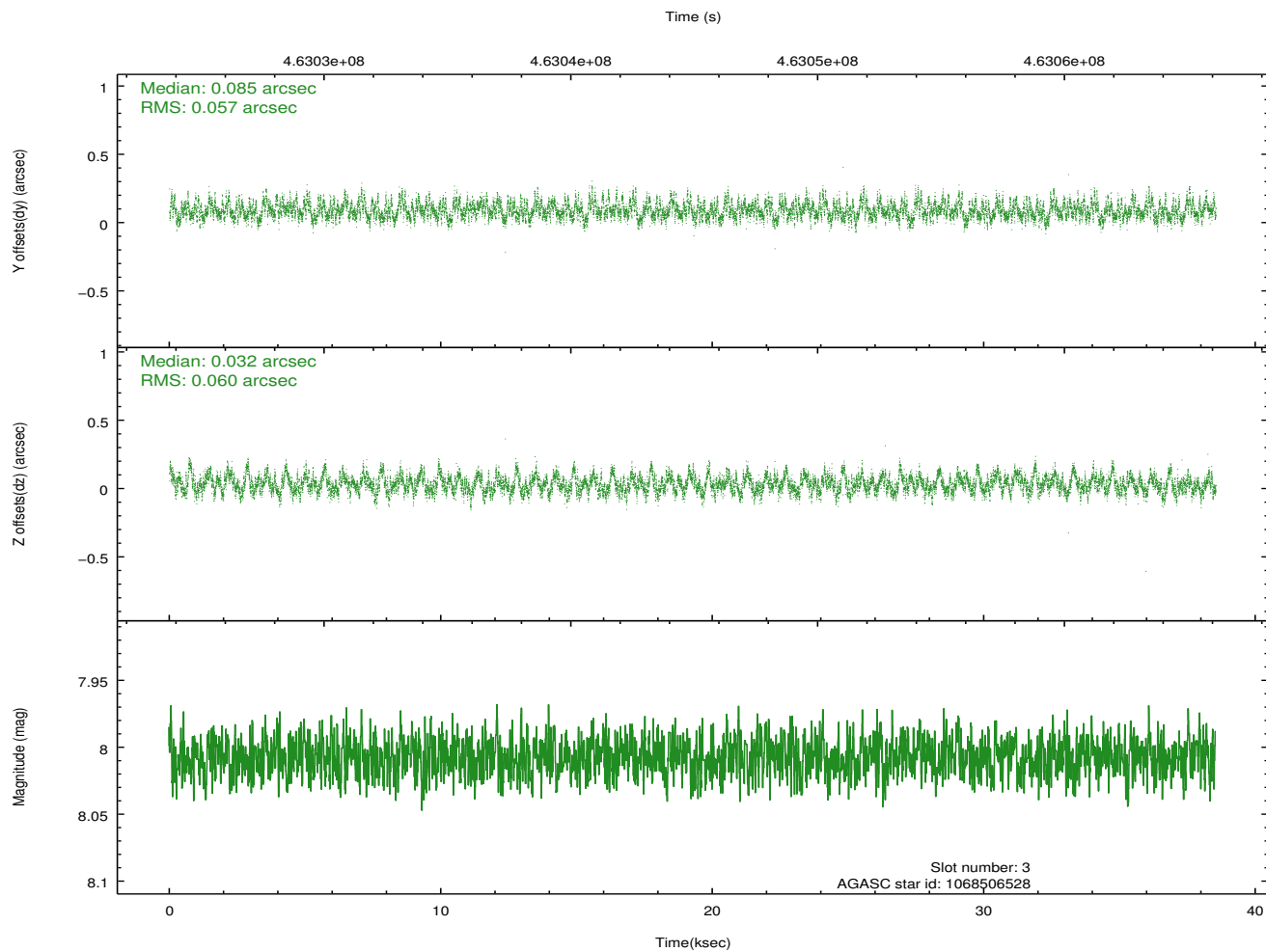
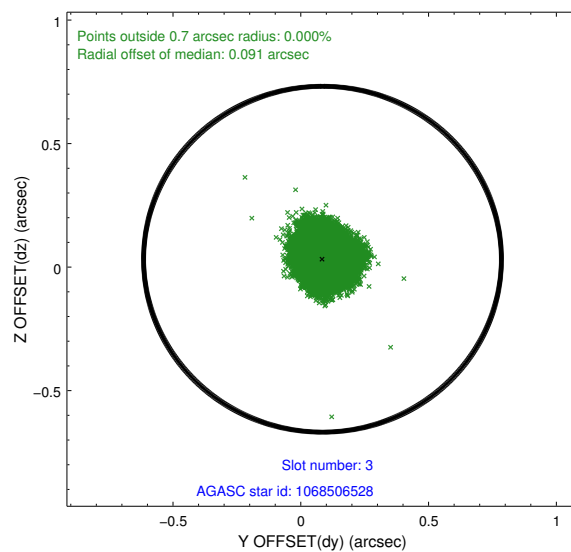
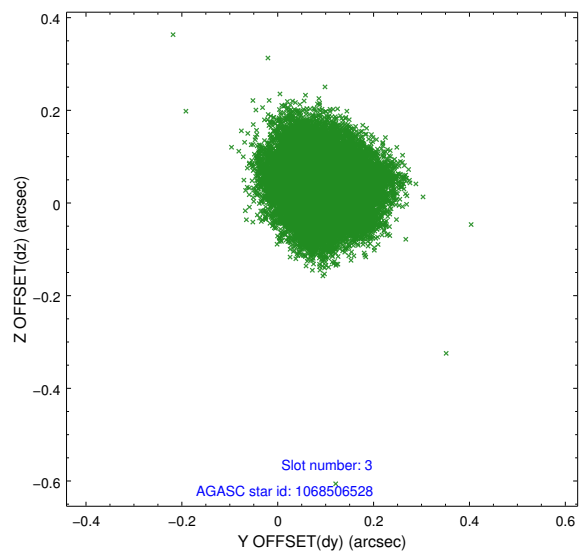


Slot Statistics

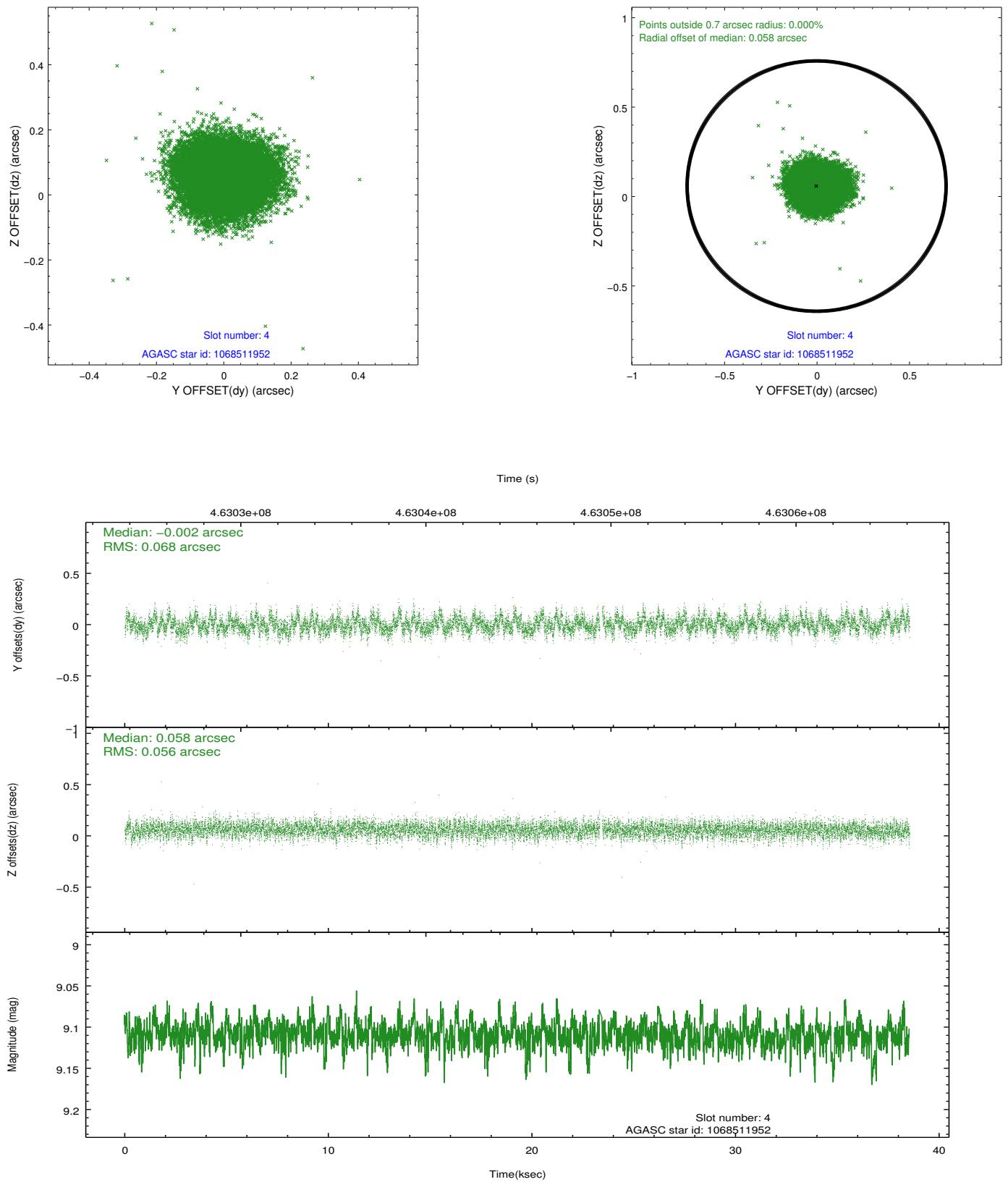
slot	status	id	mag	n_pts	med_dy	med_dz	dr1	dr2	ra	dec	mean_y	mean_z
0	FID	ACIS-S-2	6.96	9402	-0.101	-0.030	0.022	0.038	0.000000	0.000000	-769.18	-1738.08
1	FID	ACIS-S-4	7.04	9402	0.220	0.057	0.008	0.016	0.000000	0.000000	2144.43	170.43
2	FID	ACIS-S-5	7.07	9400	-0.148	-0.018	0.024	0.036	0.000000	0.000000	-1822.02	164.08
3	GUIDE	1068506528	8.01	18800	0.085	0.032	0.090	0.137	133.786974	-46.360836	1020.85	-938.95
4	GUIDE	1068511952	9.11	18680	-0.002	0.058	0.093	0.152	133.418039	-46.355688	1797.49	-451.89
5	GUIDE	1068510128	8.64	18791	0.110	-0.080	0.075	0.121	132.886718	-46.609996	2388.04	1039.43
6	GUIDE	1069028480	7.82	18798	-0.263	-0.258	0.074	0.116	133.318334	-47.221964	283.83	2285.66
7	GUIDE	1070205472	9.21	18781	0.066	0.244	0.115	0.183	135.058529	-46.685714	-2261.72	-1654.75

2.4 Star Slots

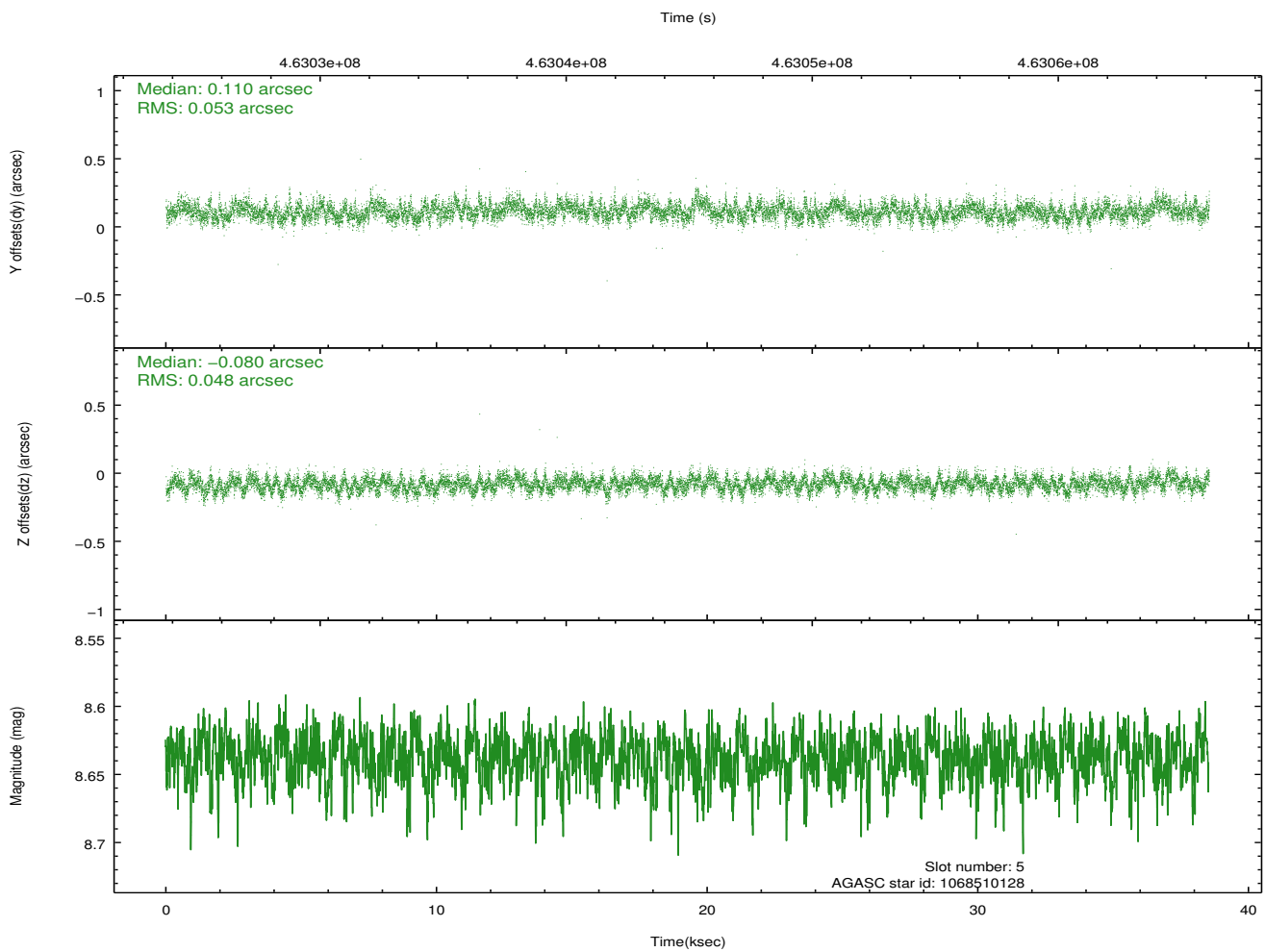
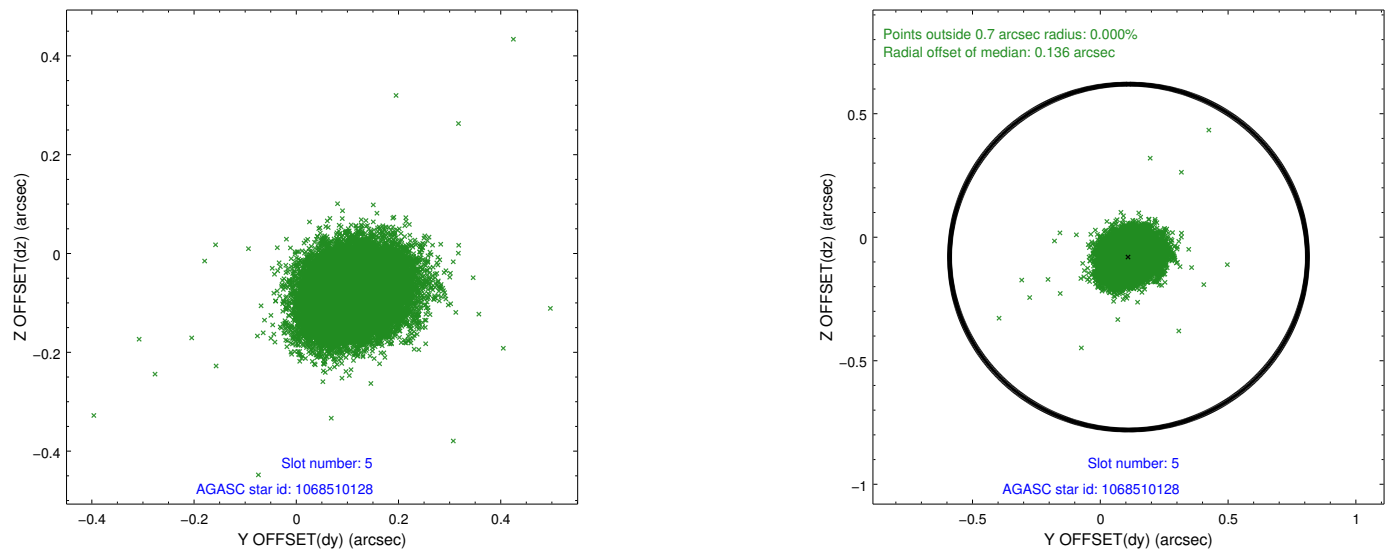
2.4.1 Slot 3



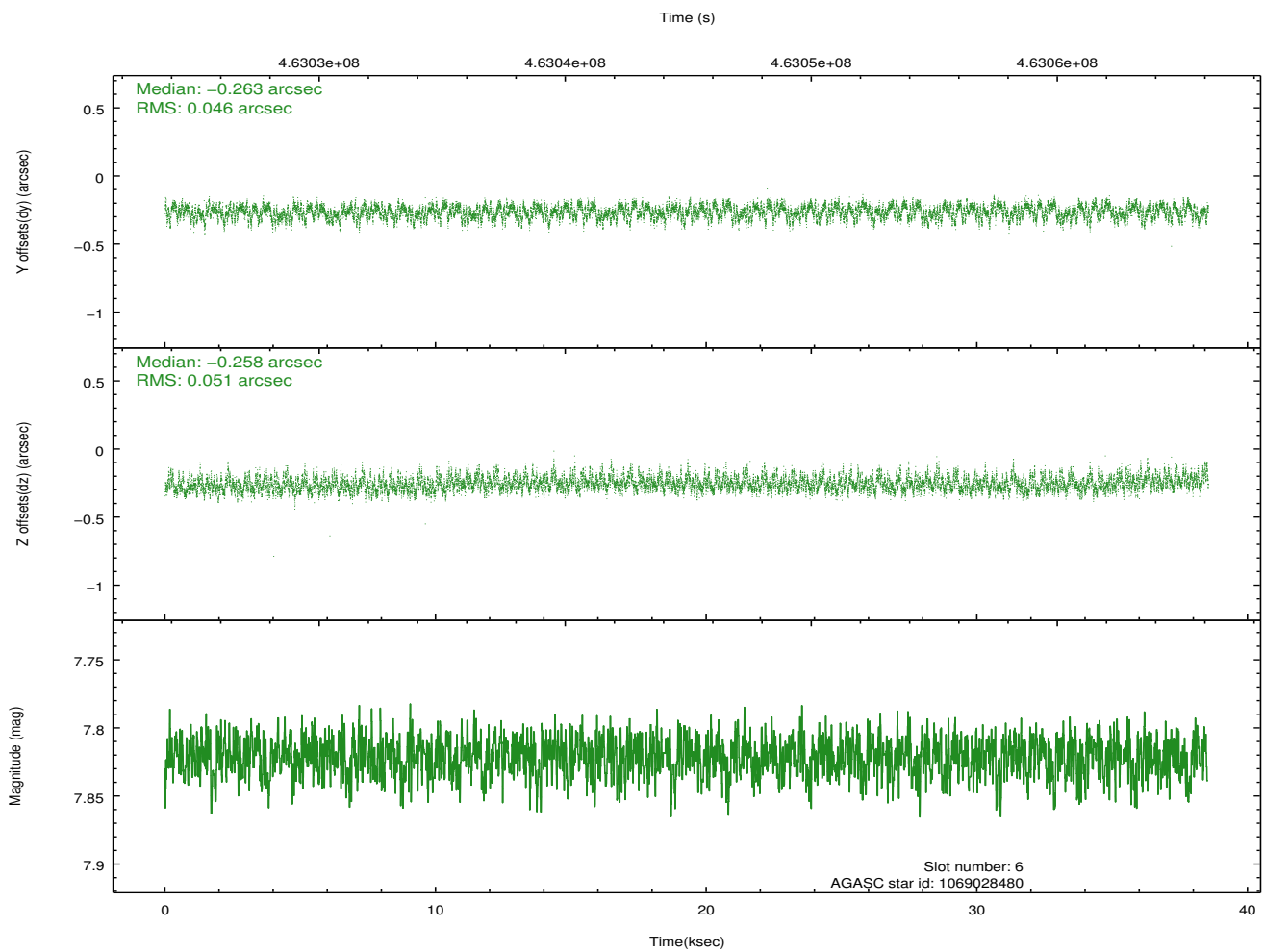
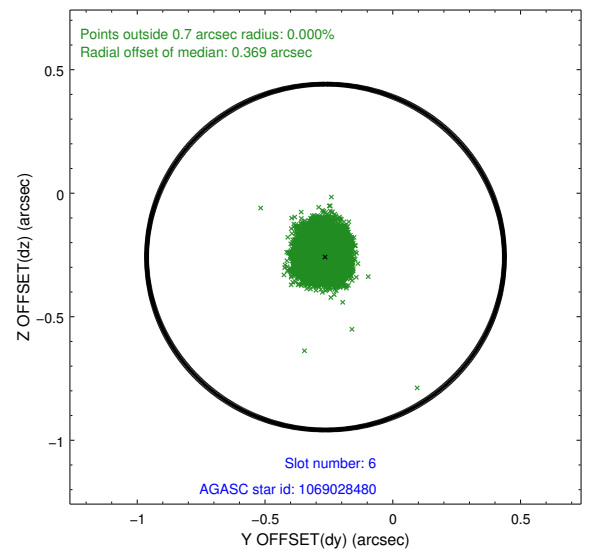
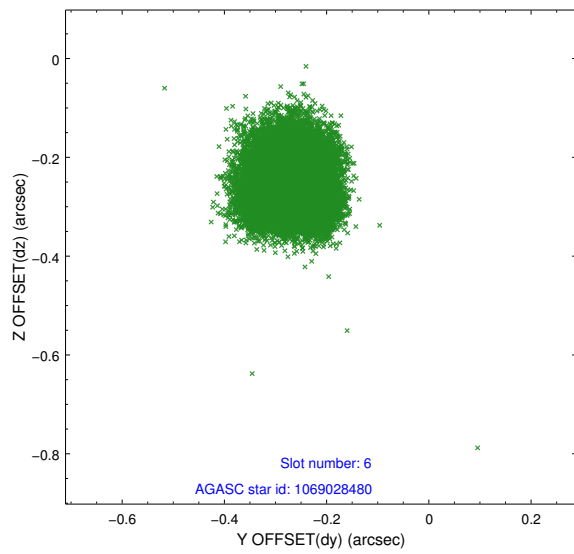
2.4.2 Slot 4



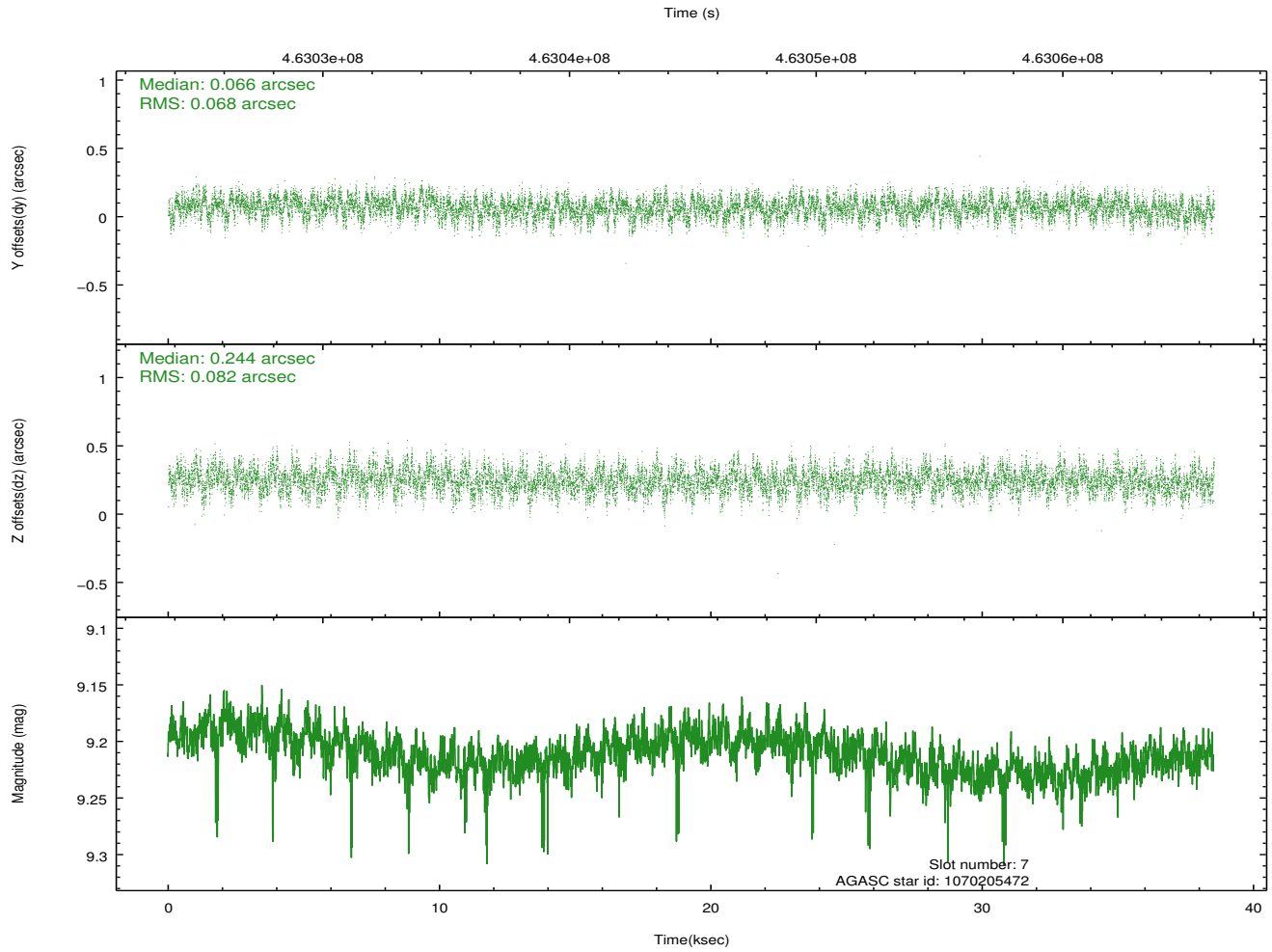
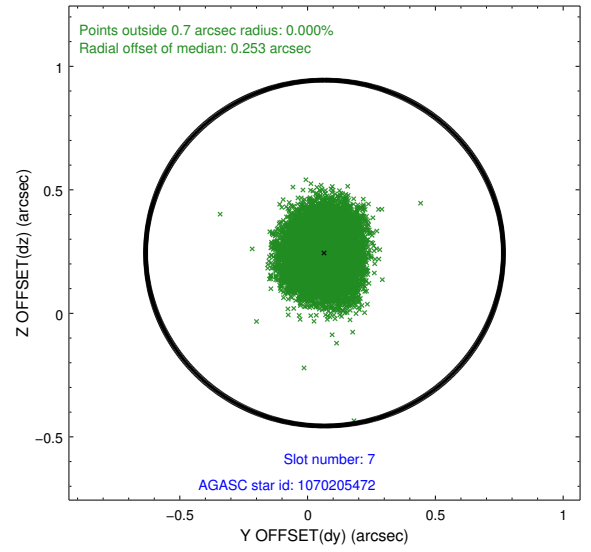
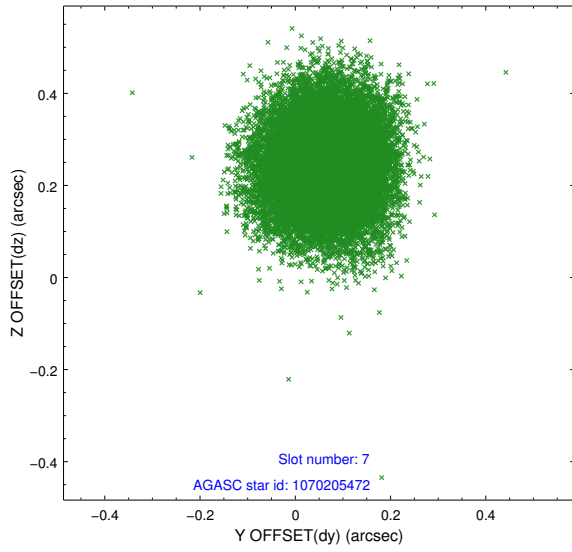
2.4.3 Slot 5



2.4.4 Slot 6

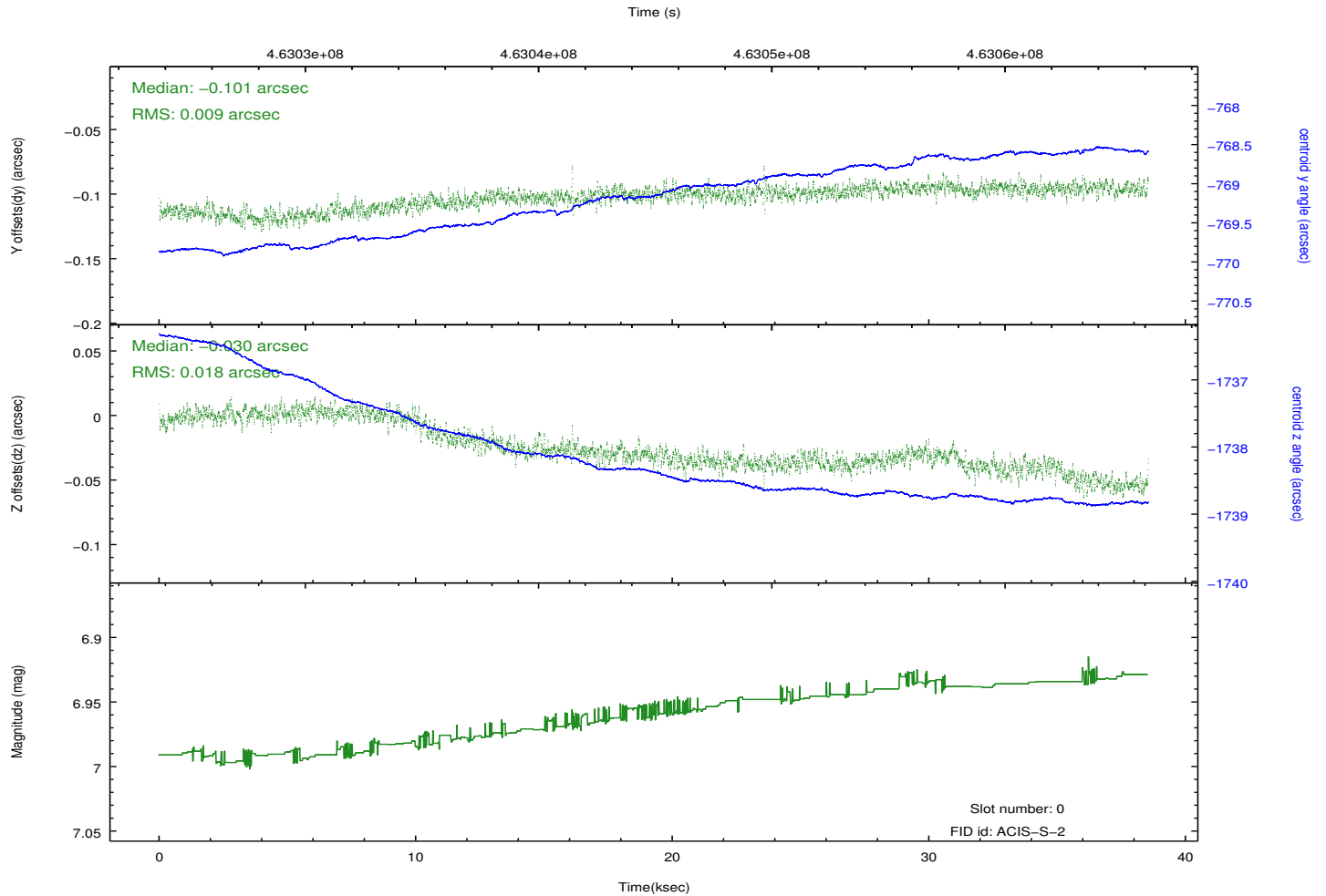
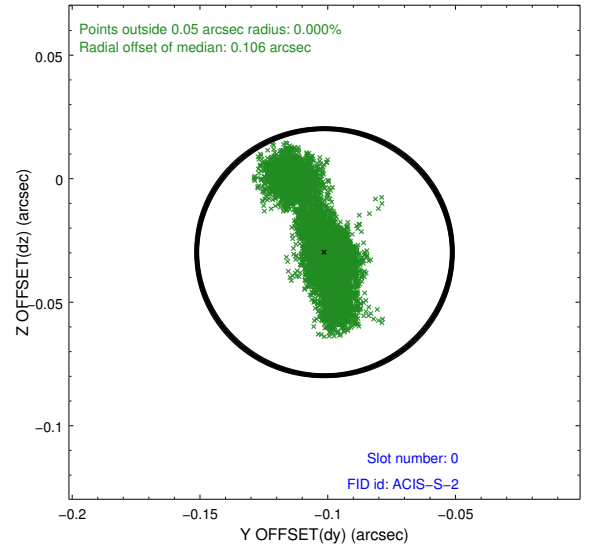
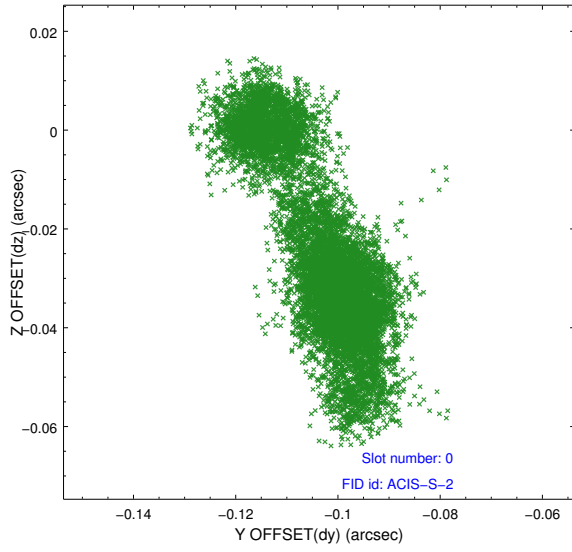


2.4.5 Slot 7

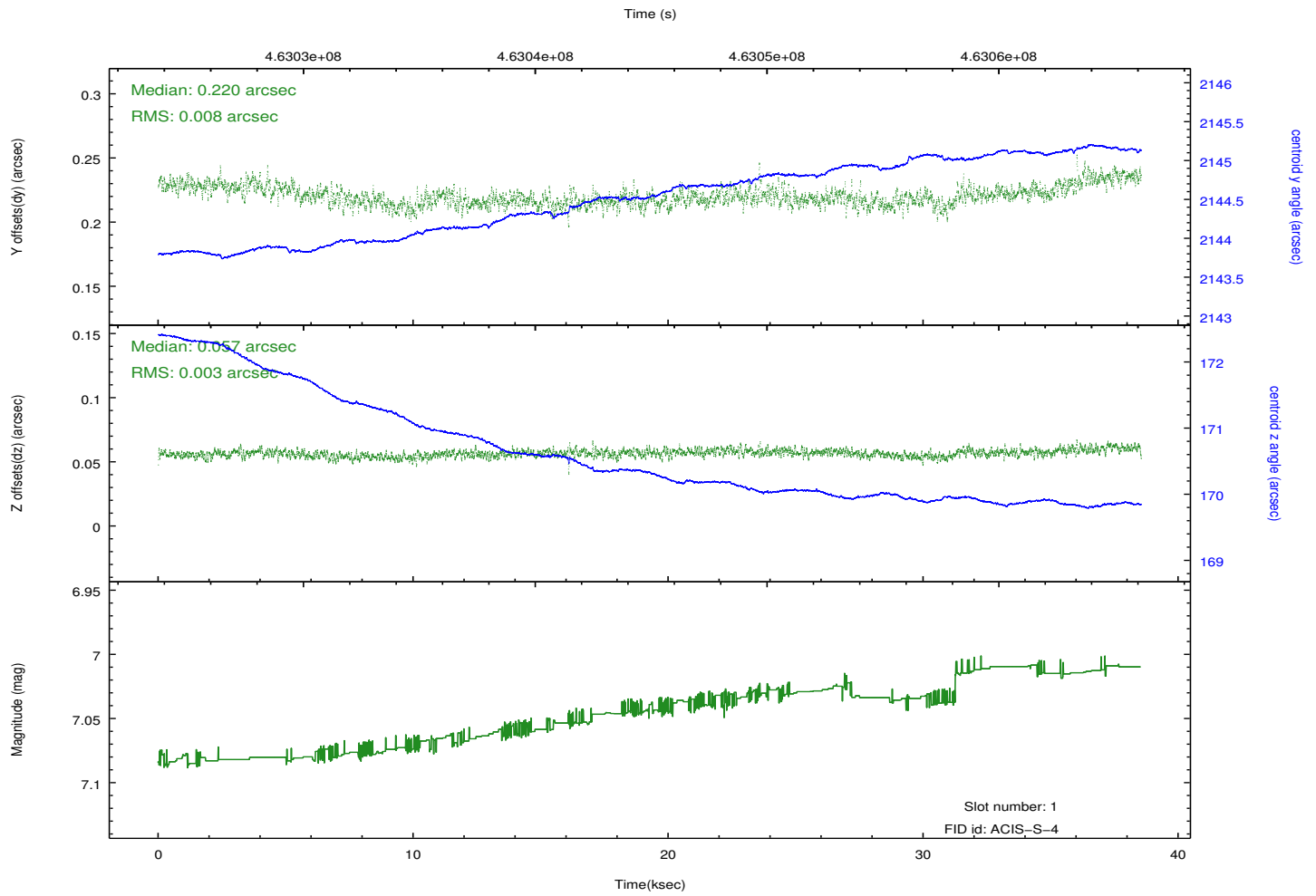
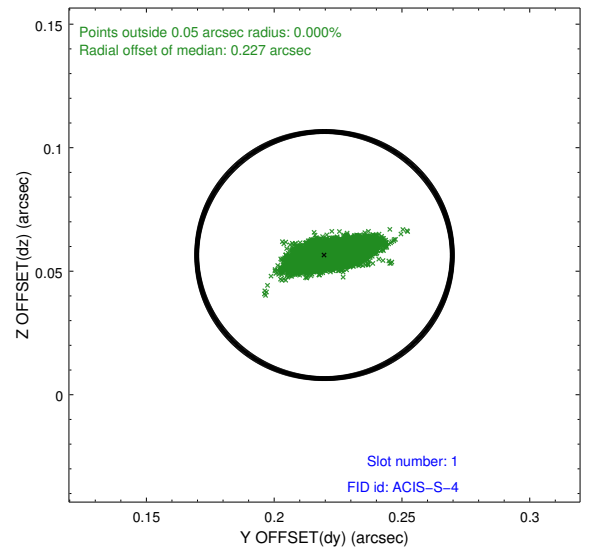
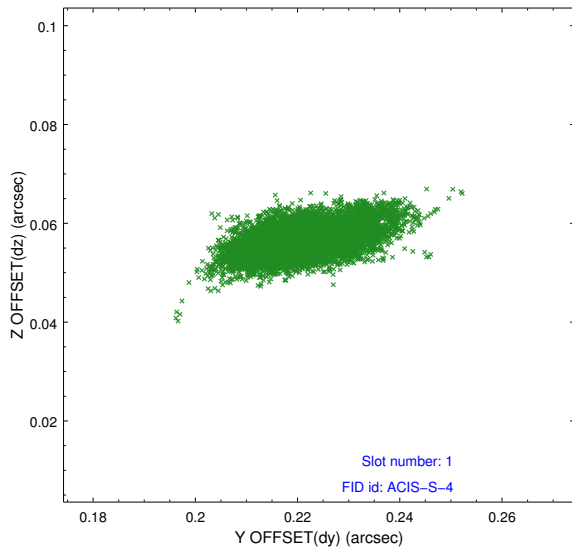


2.5 FID Slots

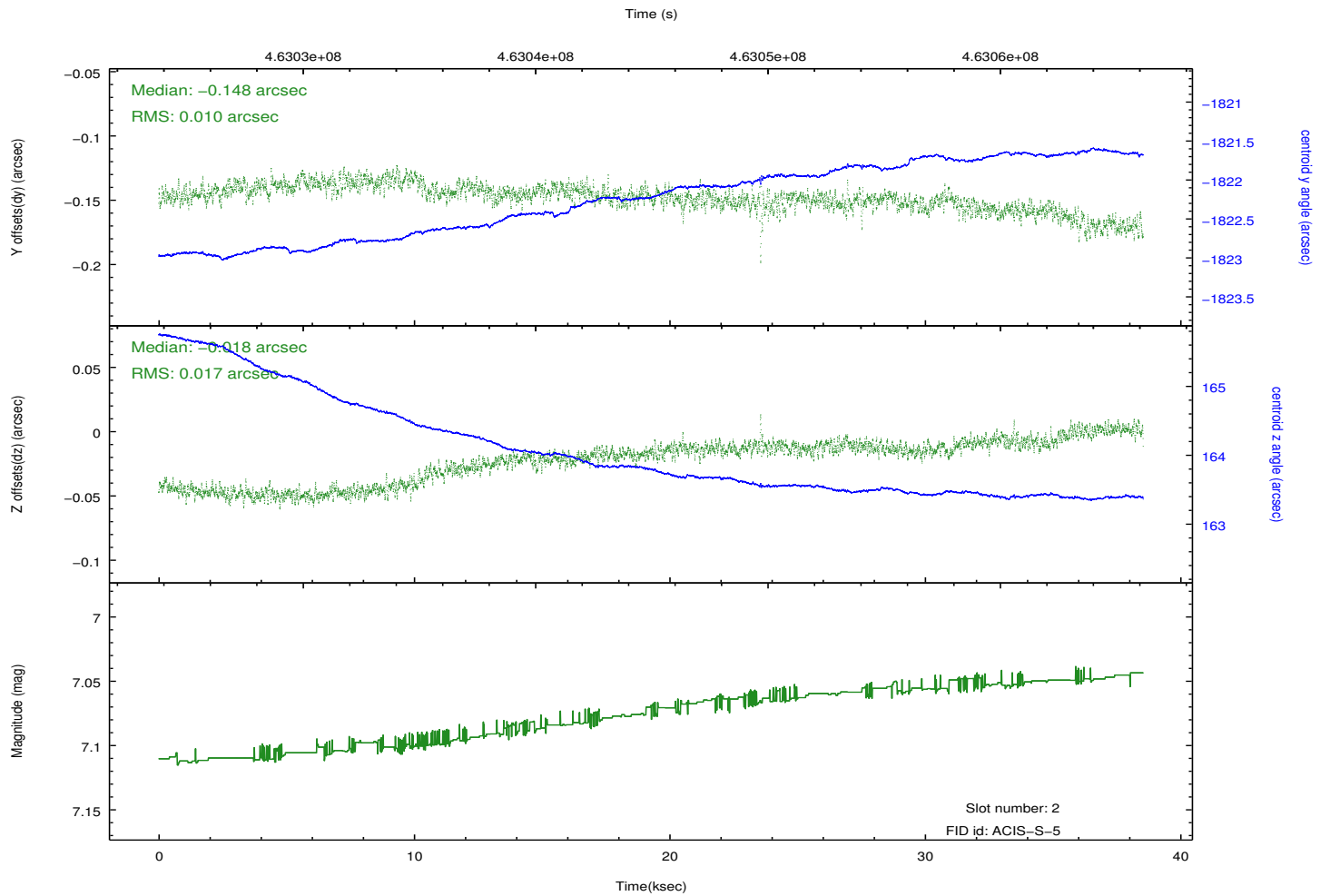
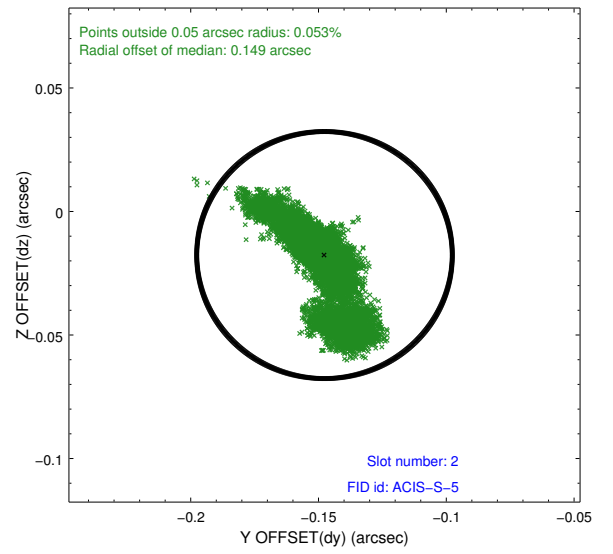
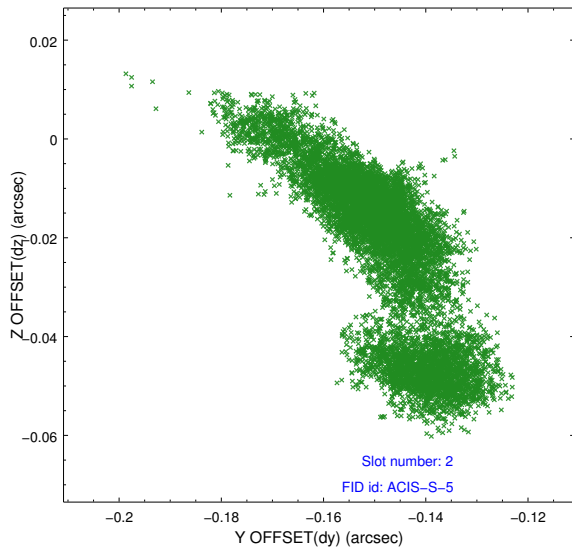
2.5.1 Slot 0



2.5.2 Slot 1



2.5.3 Slot 2



A Summary

A.1 Status

V&V Scientist	Joy Nichols
V&V Date (YYYY-MM-DD)	2012.09.07
V&V Edition	1
V&V Disposition and Status	OK
V&V Charge Time	38.476479932666

A.2 Comments

This observation was interrupted by safing of the science instruments onboard Chandra due to high solar radiation environment. The observation was interrupted at 2012:247:12:57 GMT. Due to a high radiation environment, the instruments were safed and the observation terminated early. This observation has been reprocessed so that the aspect solution correctly handles the instrument safing and maneuver activities at the end of the observation. End time of observation determined by Aspect Team.