

V&V Reference Report

L2 ASCDS Version : 8.4.3

Observation 13990 - L2 Version 2
Chandra X-Ray Center

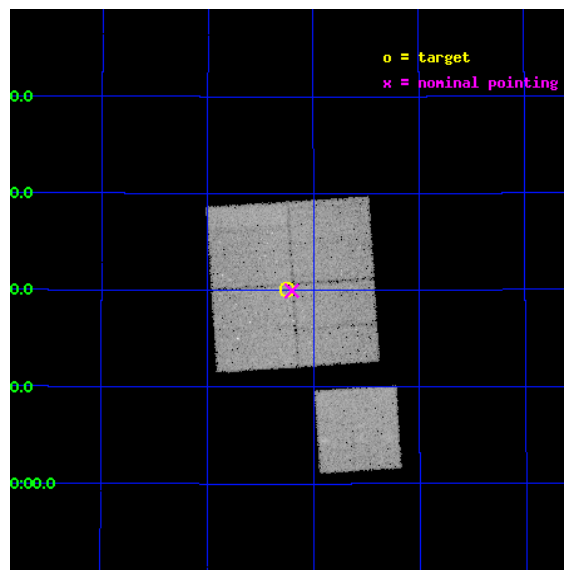
L2 Processing Date : Feb 26 2012

Contents

1	Front	2
2	OBI	3
2.1	OBI	3
2.1.1	Images	3
2.1.2	Bias	3
2.1.3	Parameters	4
2.1.4	Events	4
2.2	Compared Parameters	5
2.3	Aspect	6
2.4	Star Slots	9
2.4.1	Slot 3	9
2.4.2	Slot 4	10
2.4.3	Slot 5	11
2.4.4	Slot 6	12
2.4.5	Slot 7	13
2.5	FID Slots	14
2.5.1	Slot 0	14
2.5.2	Slot 1	15
2.5.3	Slot 2	16
A	Summary	17
A.1	Status	17
A.2	Comments	17

1 Front

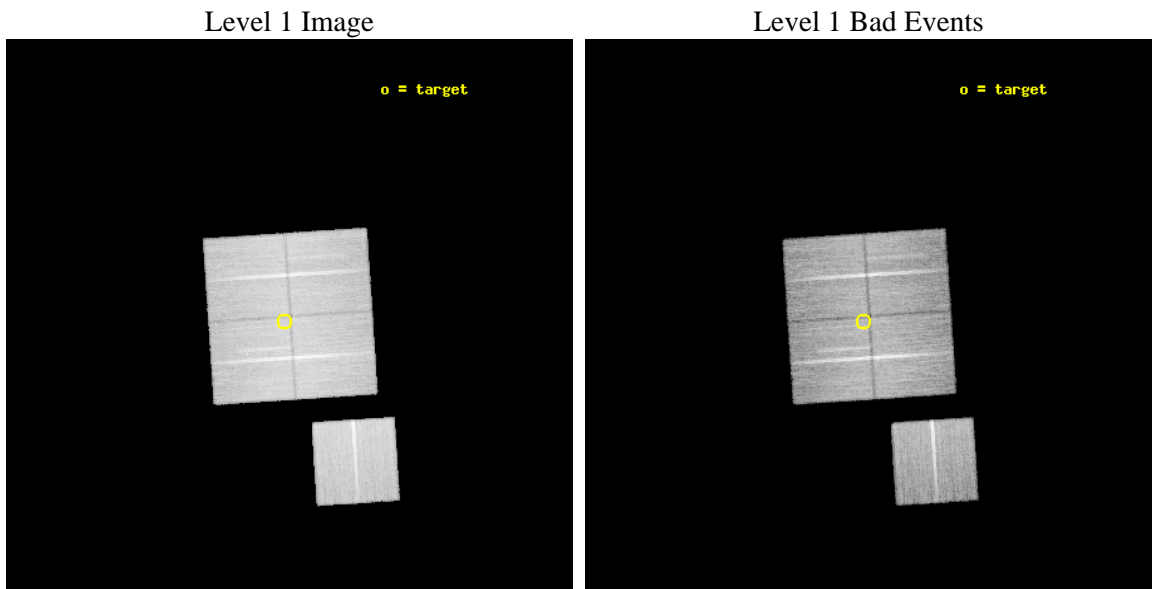
seq_num	801170	Sequence number
obs_id	13990	Observation id
title	Imaging gas clumping in the outskirts of nearby clusters of galaxies	
observer	Dr. Aurora Simionescu	Principal investigator
object	Perseus_NWclumping2	Source name
dtcycle	0	
cycle	P	events from which exps? Prim/Second/Both
ra_targ	49.31125	Observer's specified target RA [deg]
dec_targ	42.334306	Observer's specified target Dec [deg]
ra_nom	49.30060538849	Nominal RA [deg]
dec_nom	42.332416116976	Nominal Dec [deg]
roll_nom	176.21584853157	Nominal Roll [deg]
revision	2	Processing version of data
ontime	37540.836257339	Sum of GTIs [s]
livetime	37050.337594475	Livetime [s]
ontime0	37547.118198216	Sum of GTIs [s]
ontime1	37543.977217793	Sum of GTIs [s]
ontime2	37550.259238482	Sum of GTIs [s]
ontime3	37540.836257339	Sum of GTIs [s]
ontime6	37550.259248435	Sum of GTIs [s]
l2events	121817	Number of level 2 events



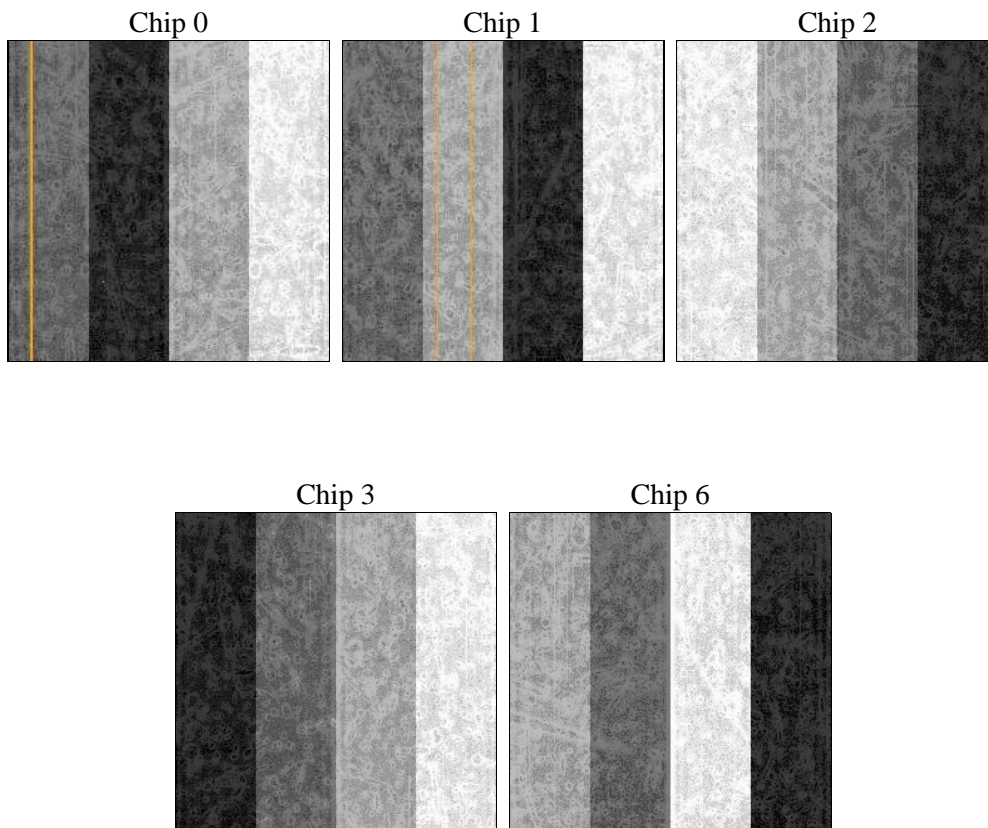
2 OBI

2.1 OBI

2.1.1 Images



2.1.2 Bias



2.1.3 Parameters

obi_num	0	Obi number	sched_exp_time	37500.000000	[s] Scheduled observation exposure time
ascdsver	8.4.3	Processing system revision	ontime	37540.836257339	Sum of GTIs [s]
caldsver	4.4.8	 	ontime0	37547.118198216	Sum of GTIs [s]
date	2012-02-26T15:57:02	Date and time of file creation	ontime1	37543.977217793	Sum of GTIs [s]
revision	2	Processing version of data	ontime2	37550.259238482	Sum of GTIs [s]
			ontime3	37540.836257339	Sum of GTIs [s]
			ontime6	37550.259248435	Sum of GTIs [s]
			l1events	1121971	Number of level 1 events

2.1.4 Events

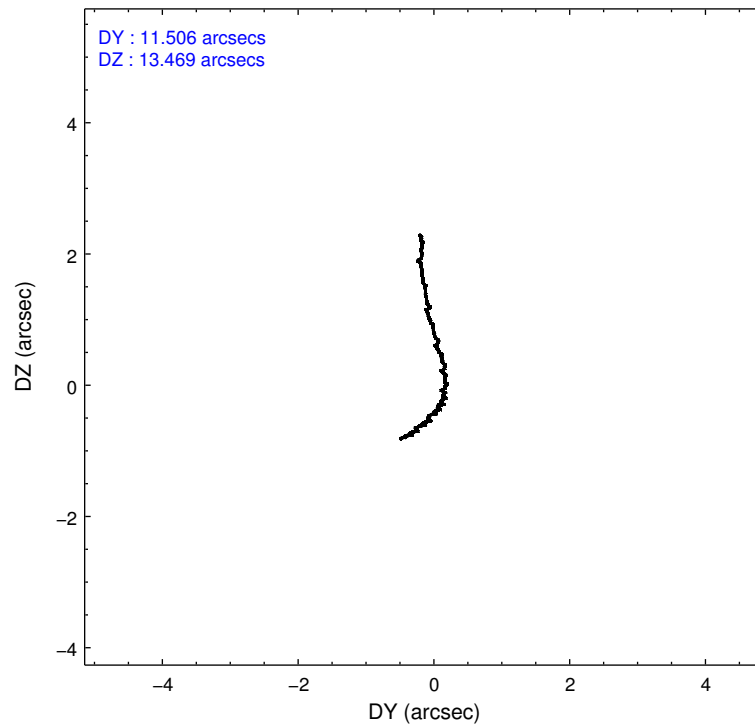
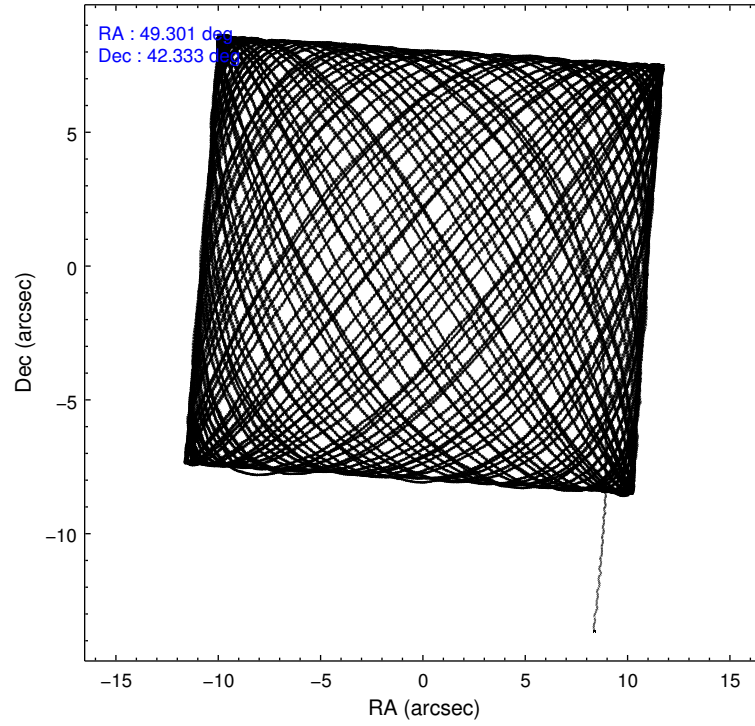
	ccd 0	ccd 1	ccd 2	ccd 3	ccd 6
level 1 events	211084	218560	233357	228102	230868
rejected events	183173	187676	205377	200948	201307
rejected %	86%	85%	88%	88%	87%

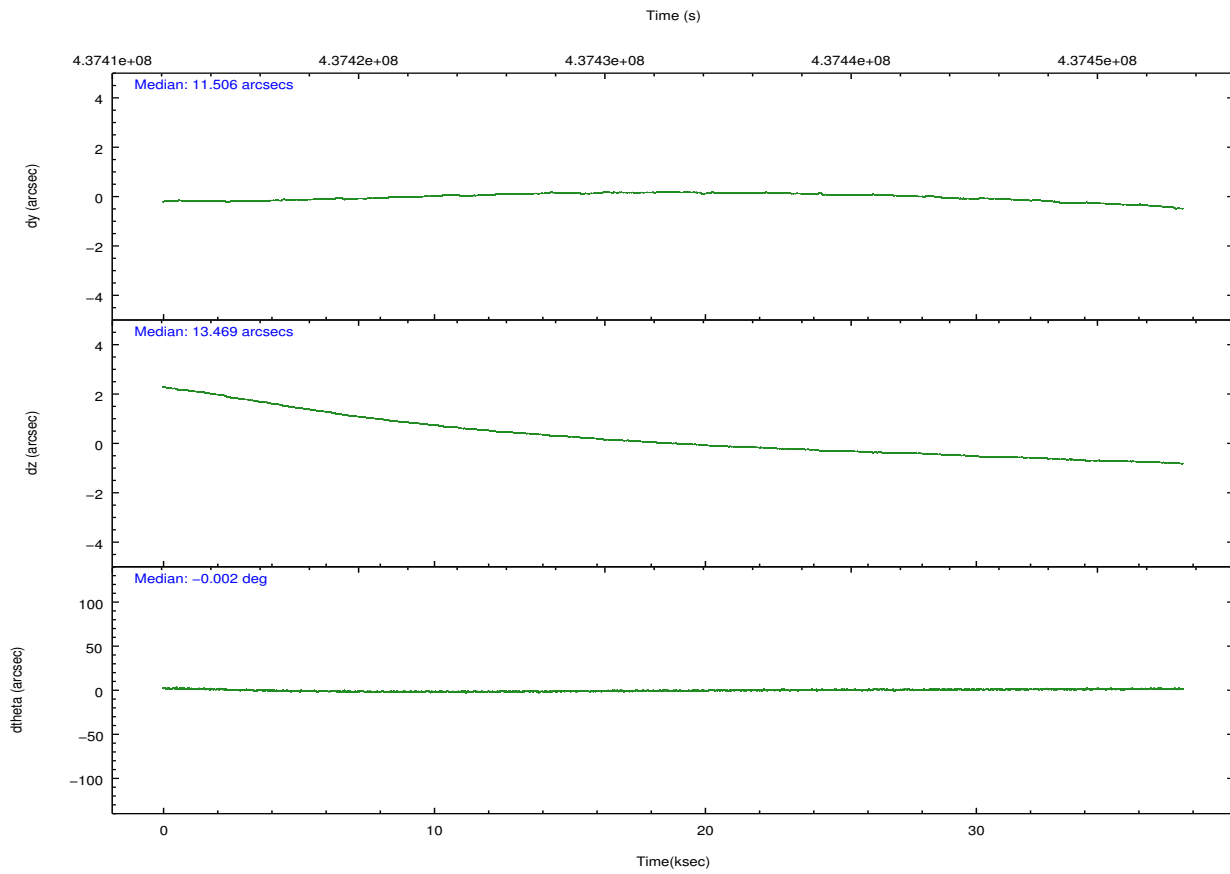
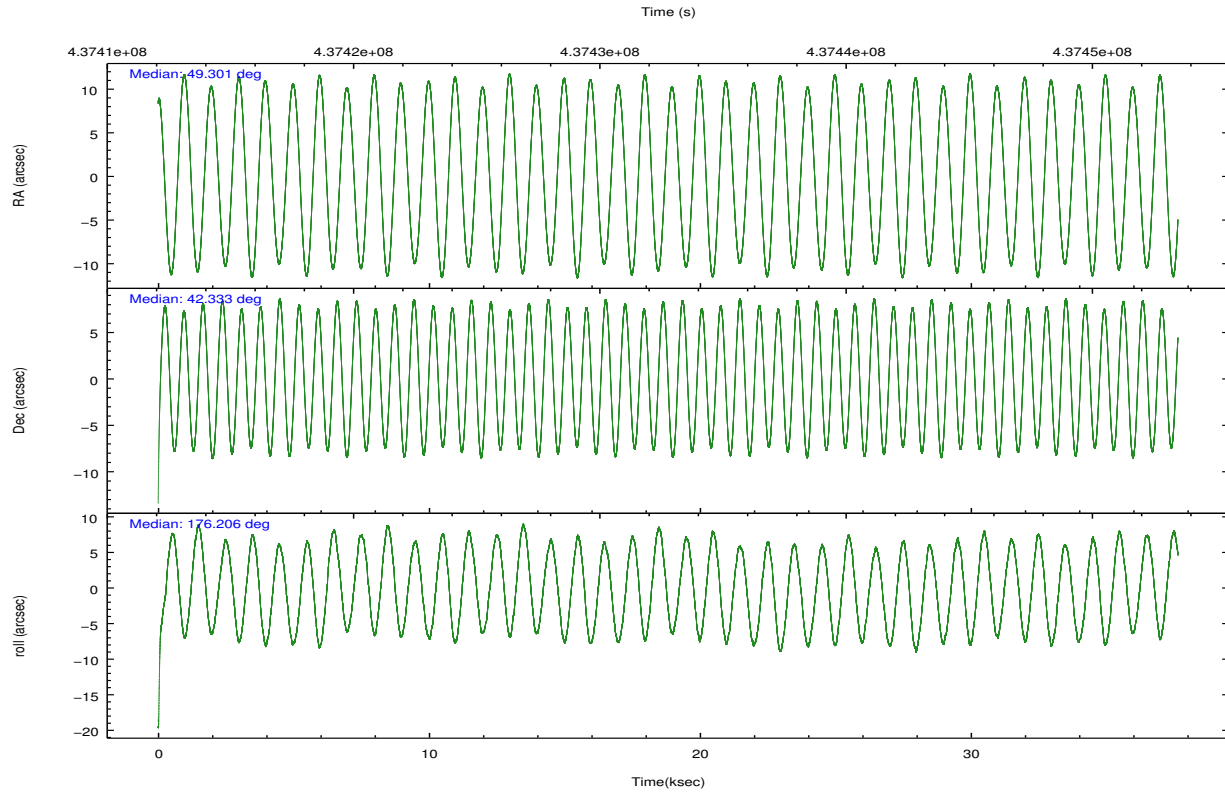
	ccd 0	ccd 1	ccd 2	ccd 3	ccd 6
grade 0 events	10253	11784	10786	10660	11425
	4%	5%	4%	4%	4%
grade 1 events	144	135	121	171	127
	0%	0%	0%	0%	0%
grade 2 events	6765	7103	6535	5756	6287
	3%	3%	2%	2%	2%
grade 3 events	2883	2931	2673	2727	2893
	1%	1%	1%	1%	1%
grade 4 events	2660	2932	2778	2768	2924
	1%	1%	1%	1%	1%
grade 5 events	10431	10857	9798	11457	11341
	4%	4%	4%	5%	4%
grade 6 events	5351	6137	5214	5246	6038
	2%	2%	2%	2%	2%
grade 7 events	172597	176681	195452	189317	189833
	81%	80%	83%	82%	82%

2.2 Compared Parameters

Parameter	Planned	Actual	Parameter	Planned	Actual
Instrument	ACIS	ACIS	Obspar format version number	7	7
Detector	ACIS-01236	ACIS-01236	Obspar file type	PREDICTED	ACTUAL
Grating	NONE	NONE	Obspar update status	NONE	UPDATED
Data mode	VFAINT	VFAINT	CCD I0 on	Y	Y
Observation mode	POINTING	POINTING	CCD I1 on	Y	Y
[deg] Pointing RA	49.333931	49.30060538848963	CCD I2 on	Y	Y
[deg] Pointing Dec	42.344653	42.33241611697643	CCD I3 on	Y	Y
[deg] Pointing Roll	175.984722	176.2158485315719	CCD S0 on	N	N
[mm] SIM focus pos	-0.782348	-0.7809083437167272	CCD S1 on	N	N
[mm] SIM defocus	0	0.001439871863259334	CCD S2 on	O2	Y
[mm] SIM translation stage pos	-233.592463	-233.5874344608287	CCD S3 on	O1	N
[mm] SIM translation stage offset	0	-0.005018542100998502	CCD S4 on	N	N
[s] Observation start time (MET)	437414077.184000	437412874.05387	CCD S5 on	N	N
Observation start date	2011-11-11T15:53:31	2011-11-11T15:34:34	Number of optional ACIS chips dropped	1	1
[s] Observation end time (MET)	437451577.184000	437452252.50594	On-chip summing requested	N	N
Observation end date	2011-11-12T02:18:31	2011-11-12T02:30:52	Subarray requested	NONE	NONE
Read mode	TIMED	TIMED	Alternating exposures requested	N	N
			[s] Primary exposure time	0.000000	3.1

2.3 Aspect



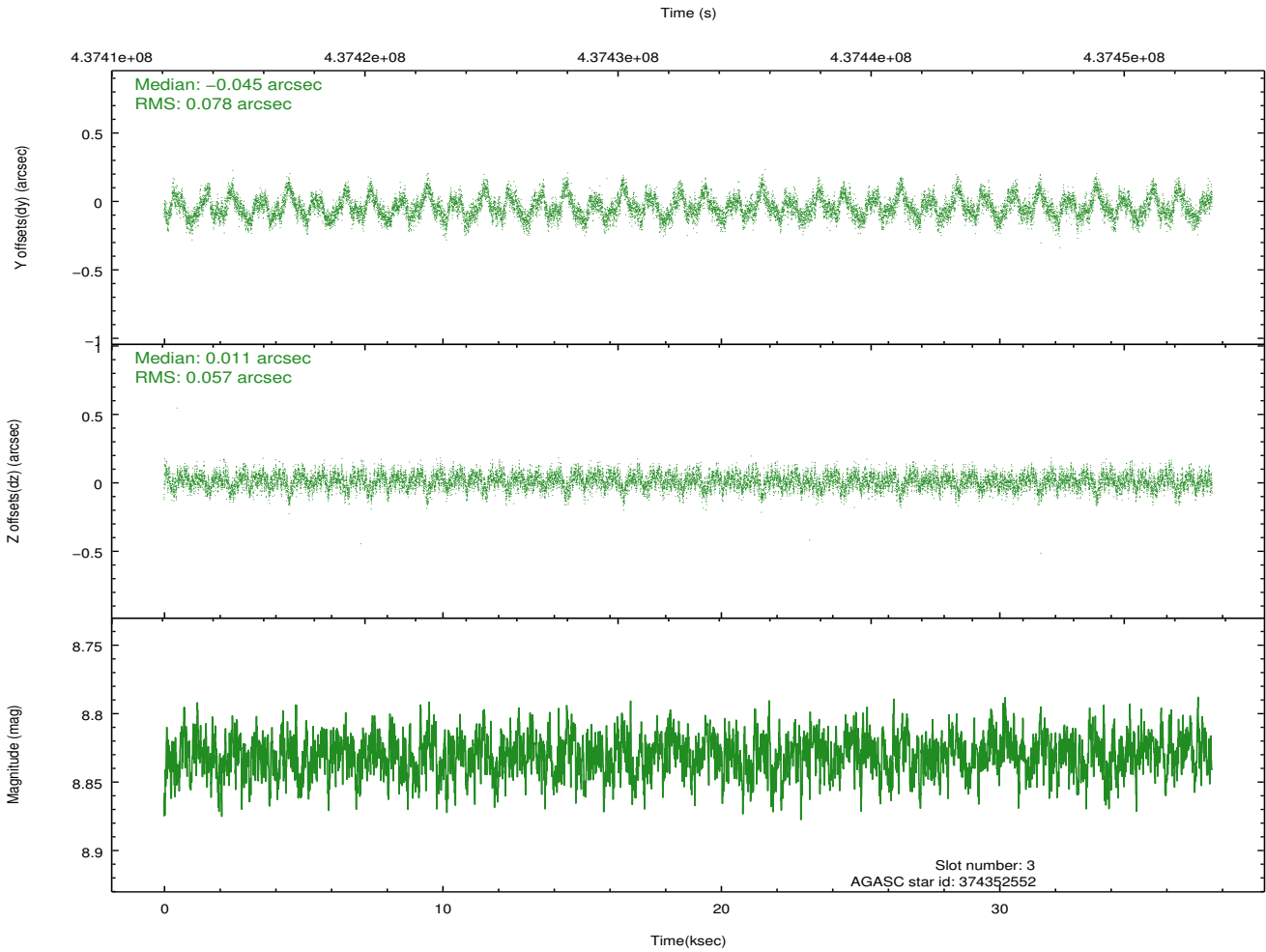
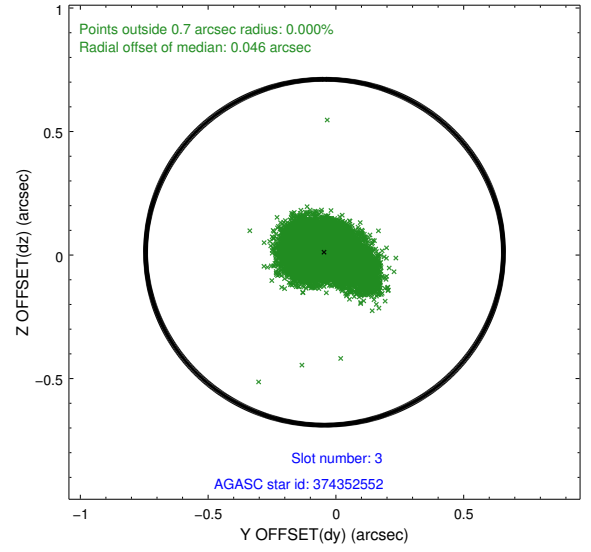
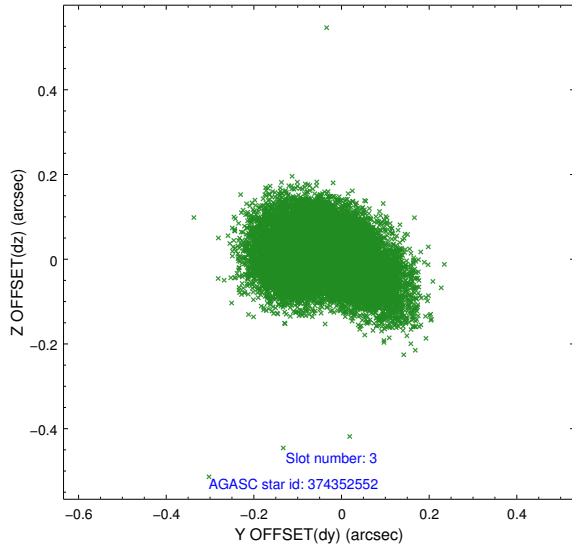


Slot Statistics

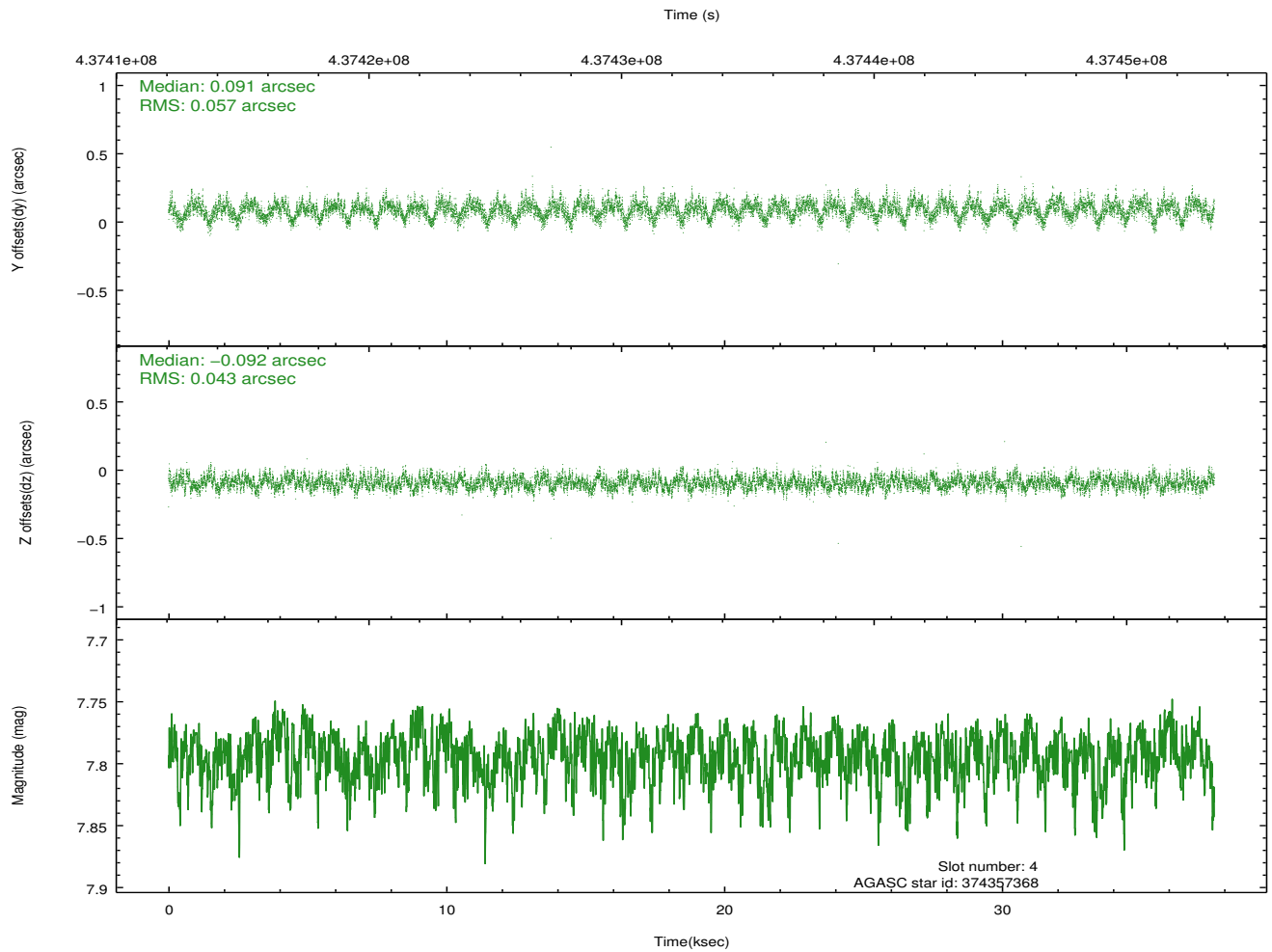
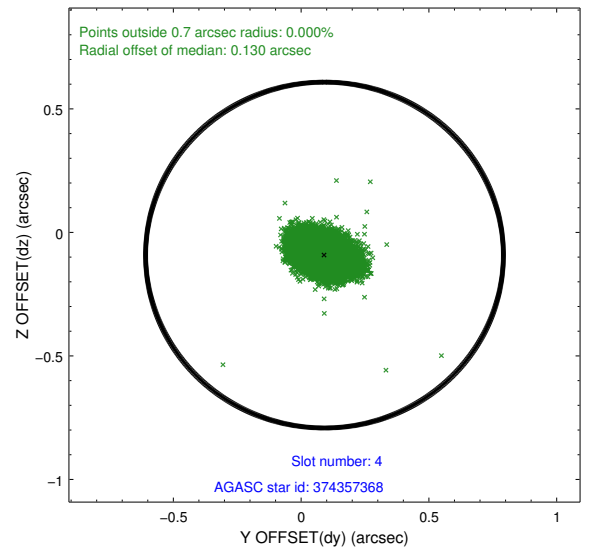
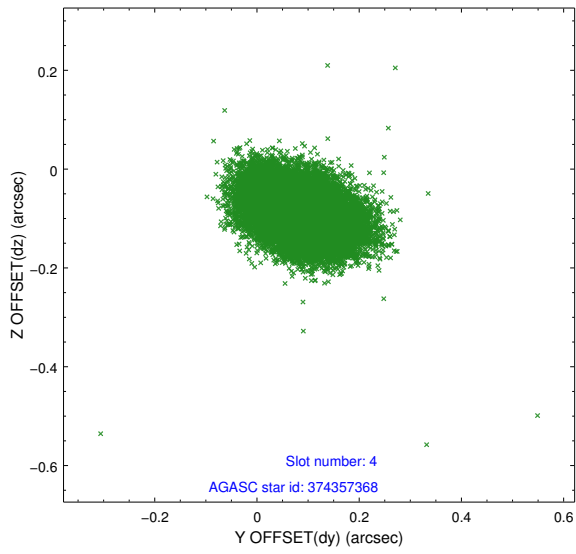
slot	status	id	mag	n_pts	med_dy	med_dz	dr1	dr2	ra	dec	mean_y	mean_z
0	FID	ACIS-I-1	7.06	9179	0.055	-0.006	0.018	0.036	0.000000	0.000000	928.13	-837.30
1	FID	ACIS-I-5	7.05	9178	-0.193	0.068	0.013	0.020	0.000000	0.000000	-1820.20	1060.26
2	FID	ACIS-I-6	7.07	9180	0.046	0.007	0.013	0.041	0.000000	0.000000	393.65	1704.73
3	GUIDE	374352552	8.83	18356	-0.045	0.011	0.100	0.170	49.205176	42.496124	379.04	-519.09
4	GUIDE	374357368	7.79	18358	0.091	-0.092	0.076	0.124	49.396079	42.675115	-80.62	-1197.67
5	GUIDE	376070040	8.41	18358	-0.021	-0.034	0.070	0.116	50.072031	41.897206	-2085.35	1460.13
6	GUIDE	374357808	8.67	18357	-0.070	-0.033	0.079	0.124	49.921429	42.176083	-1605.86	490.61
7	GUIDE	376064600	9.23	18342	0.046	0.151	0.087	0.144	50.213209	42.582691	-2263.81	-1029.63

2.4 Star Slots

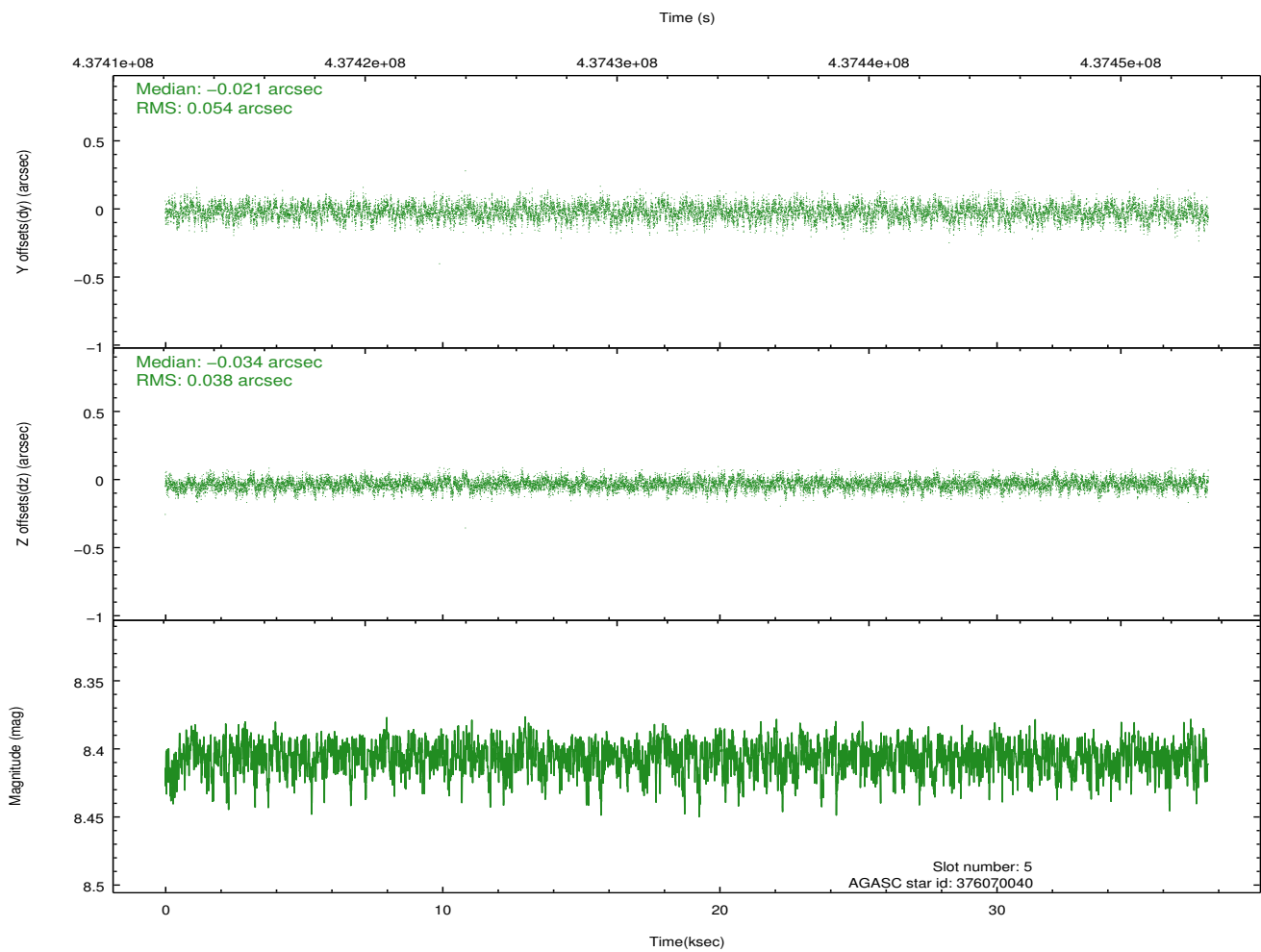
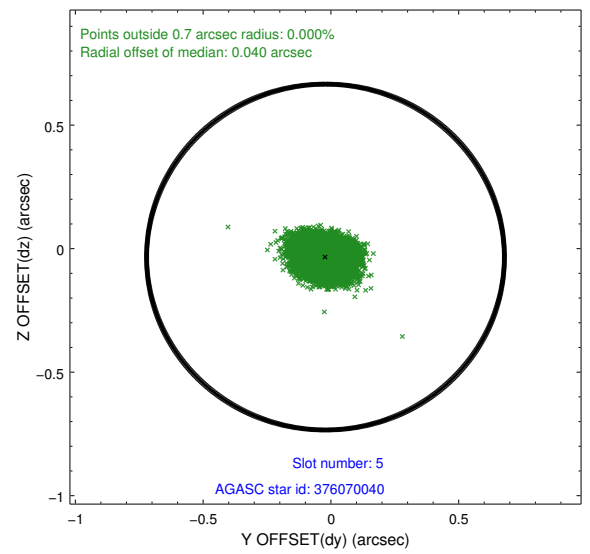
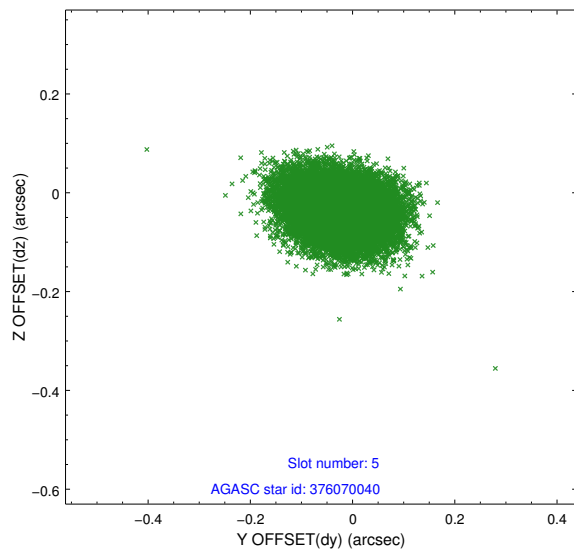
2.4.1 Slot 3



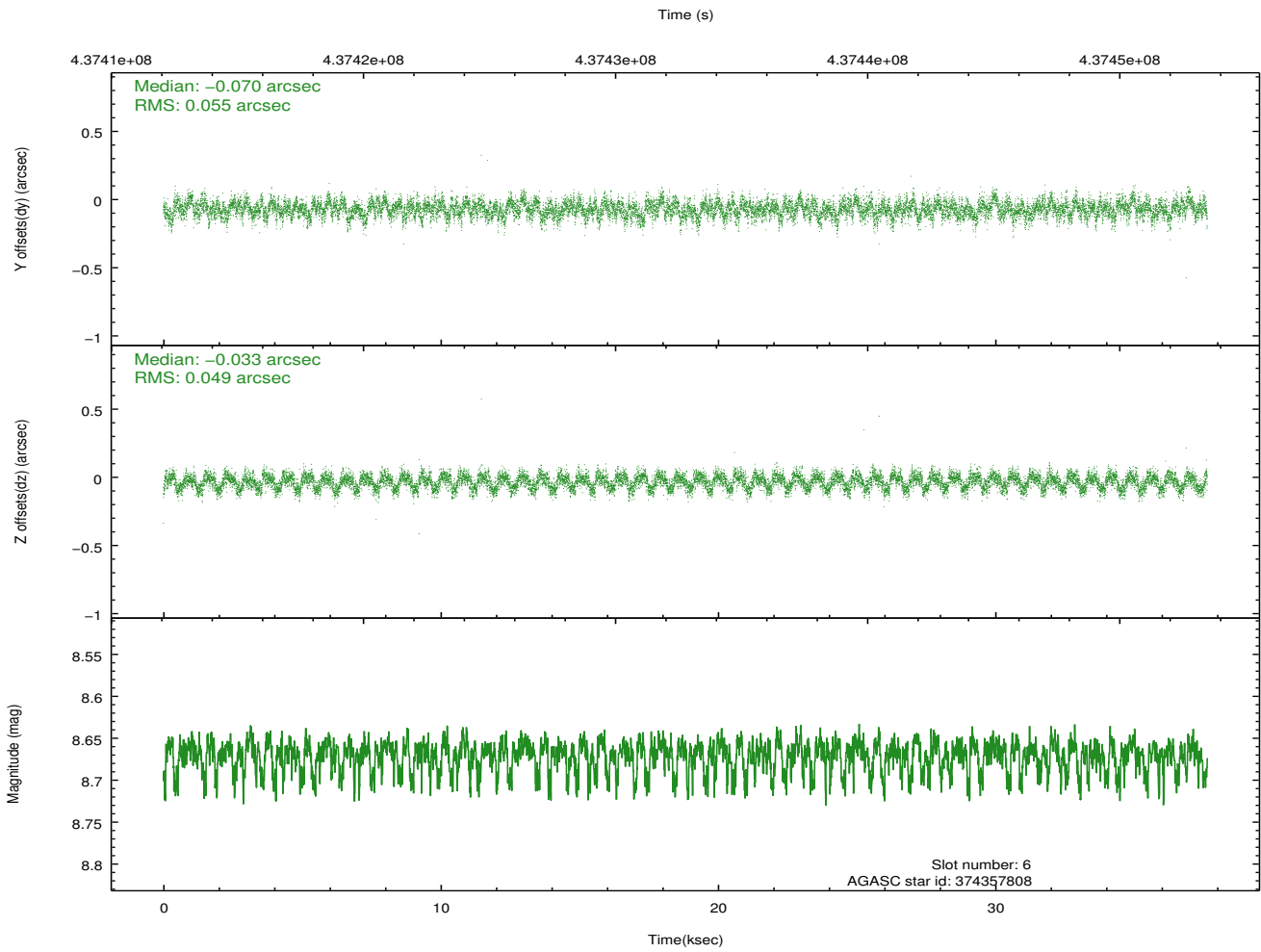
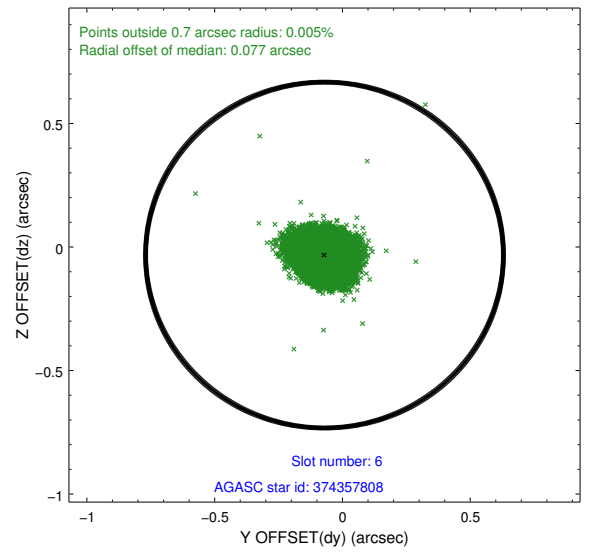
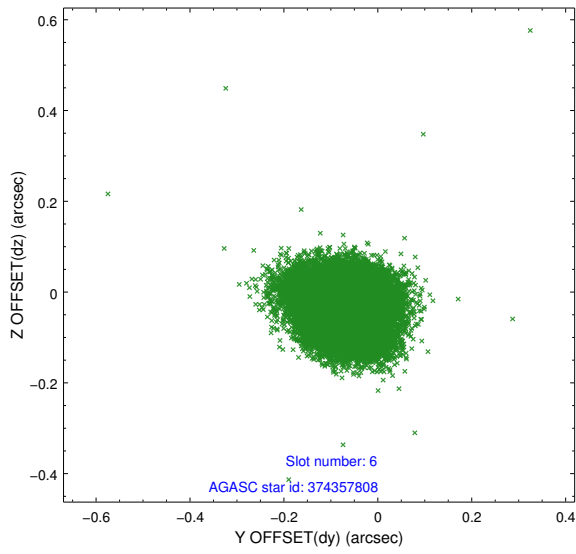
2.4.2 Slot 4



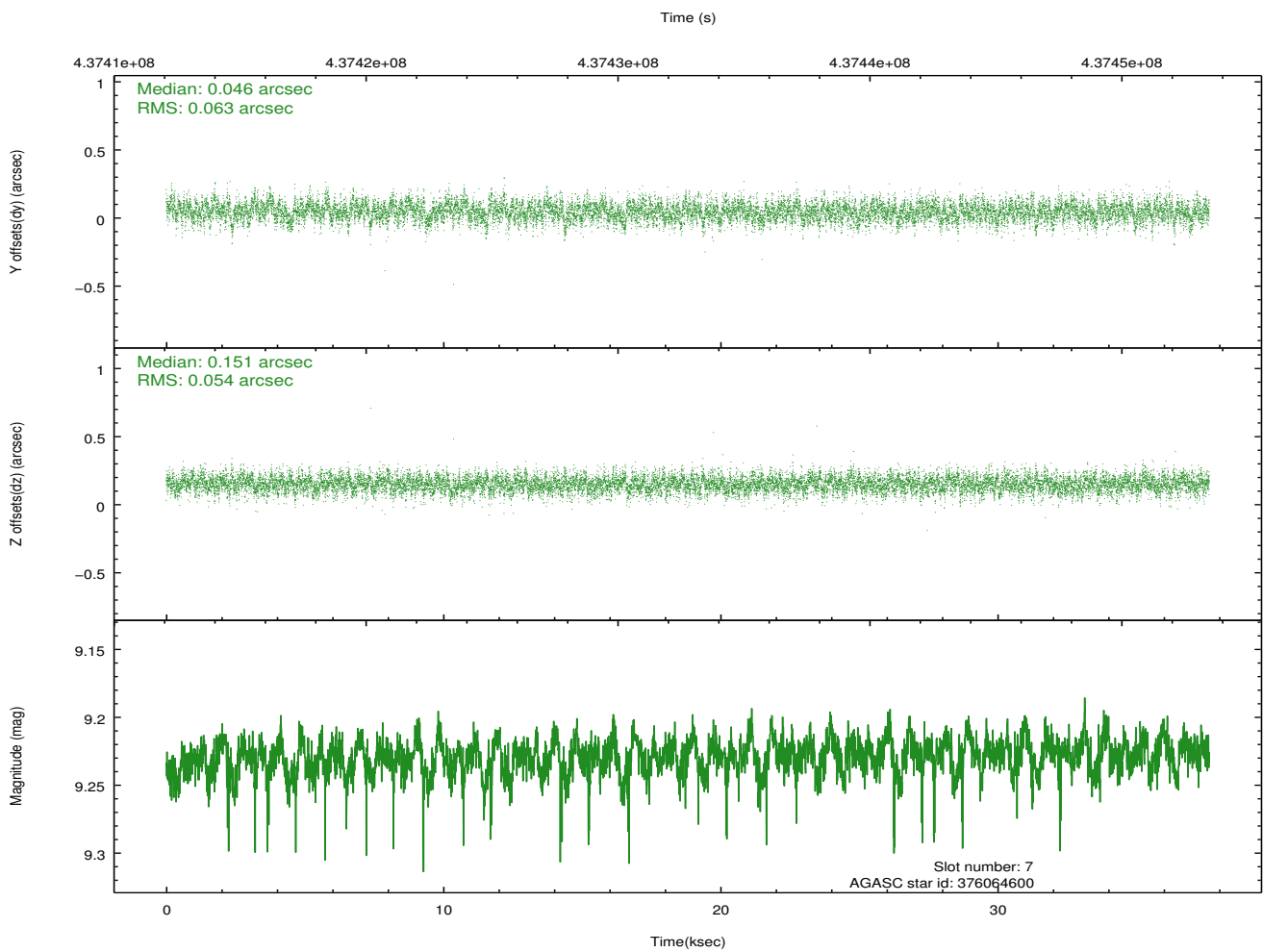
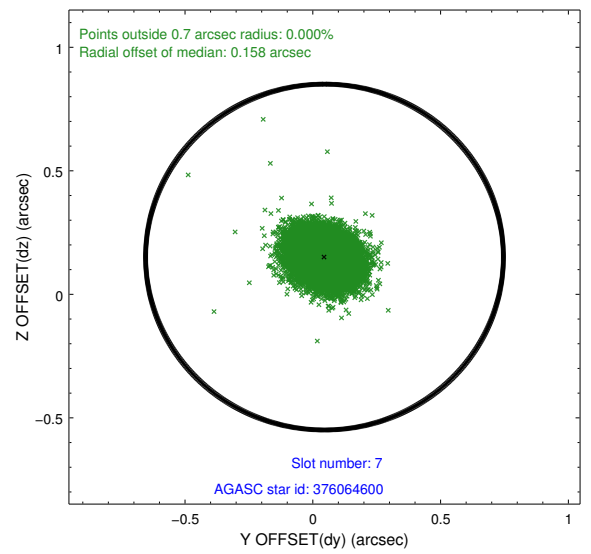
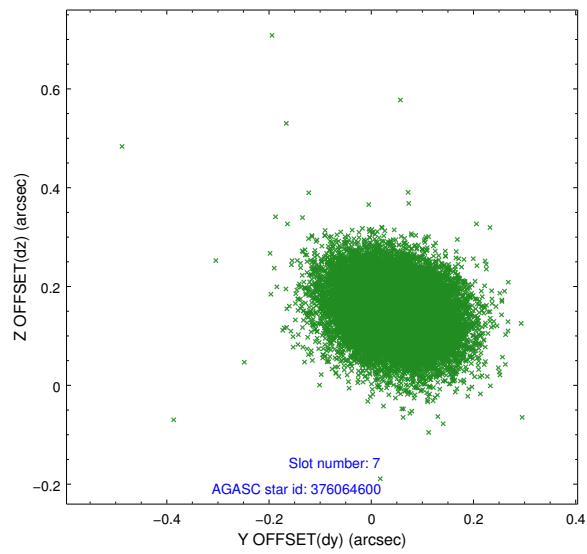
2.4.3 Slot 5



2.4.4 Slot 6

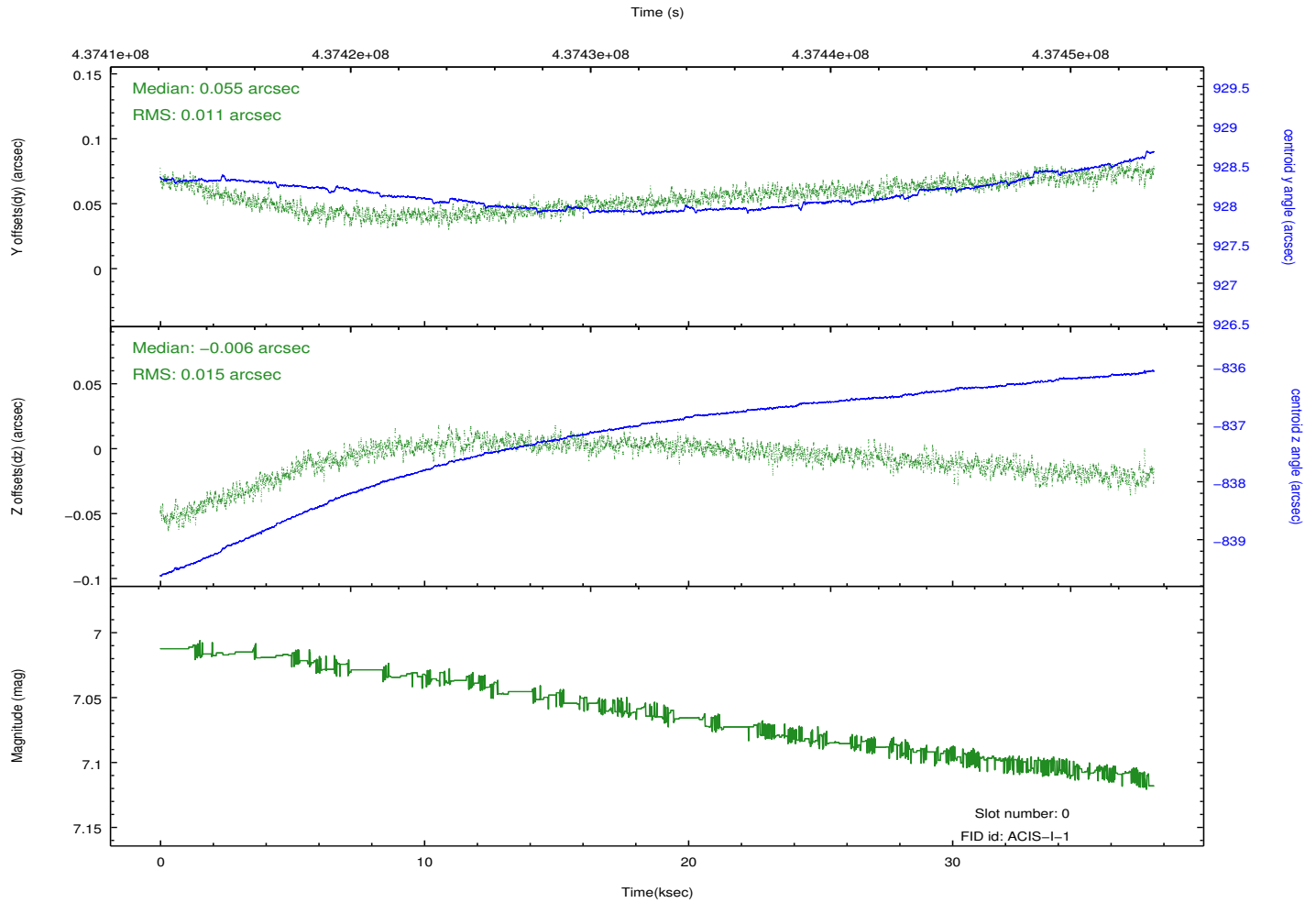
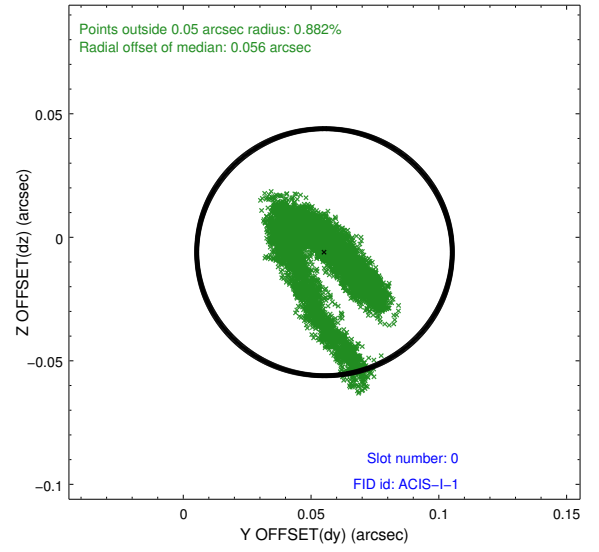
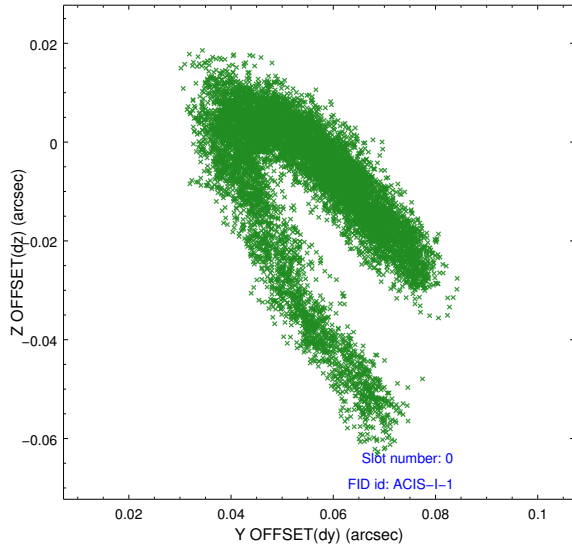


2.4.5 Slot 7

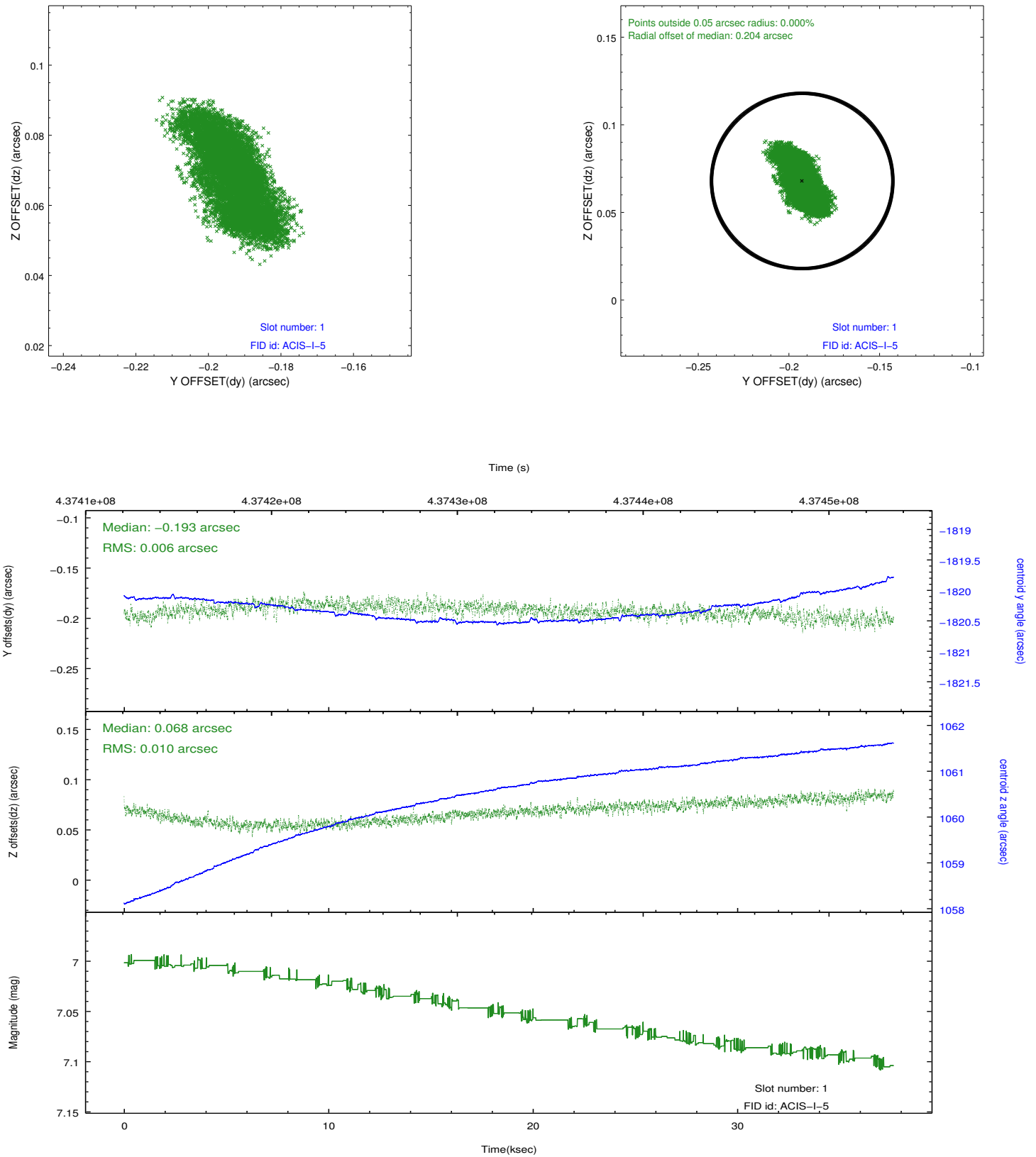


2.5 FID Slots

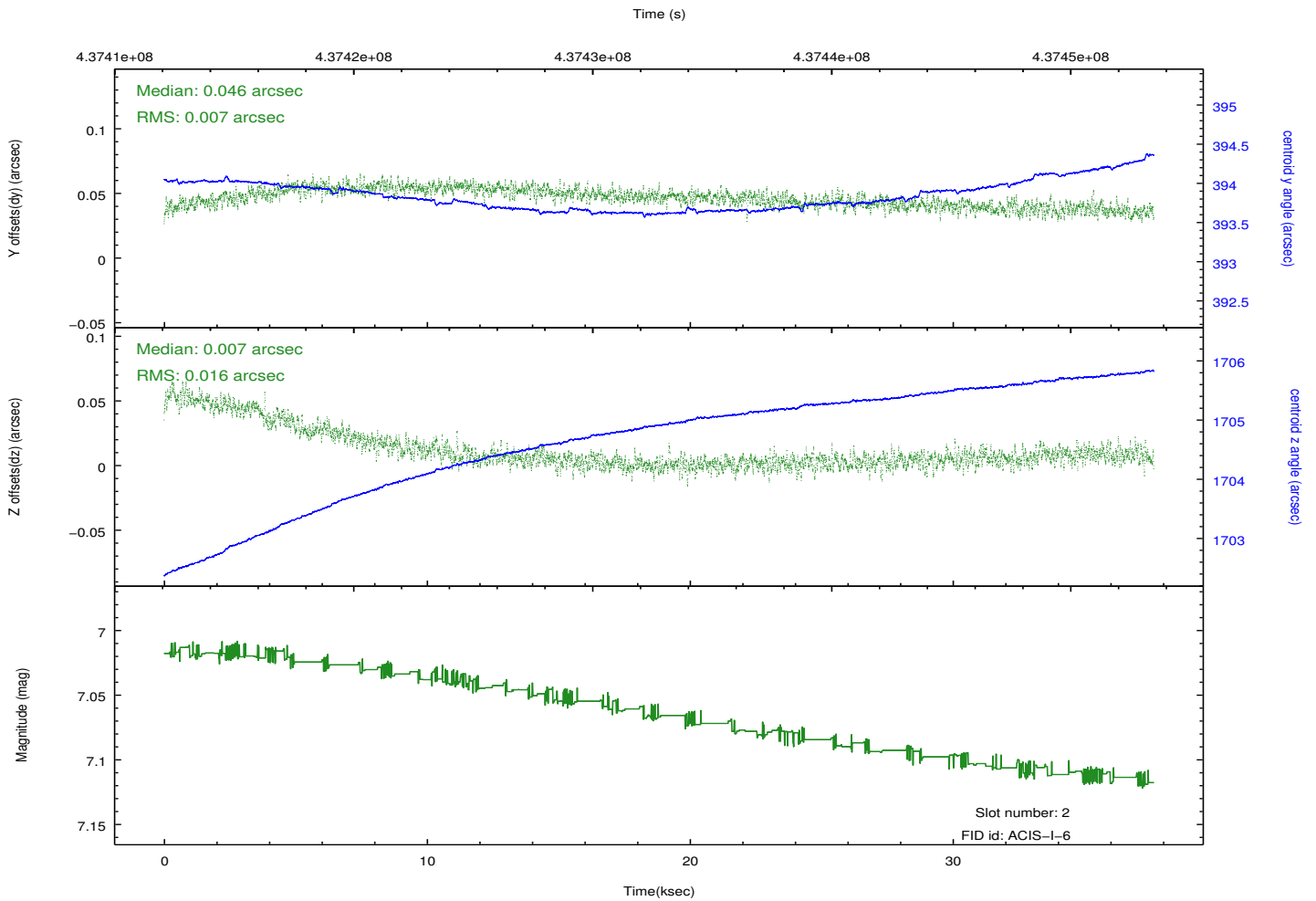
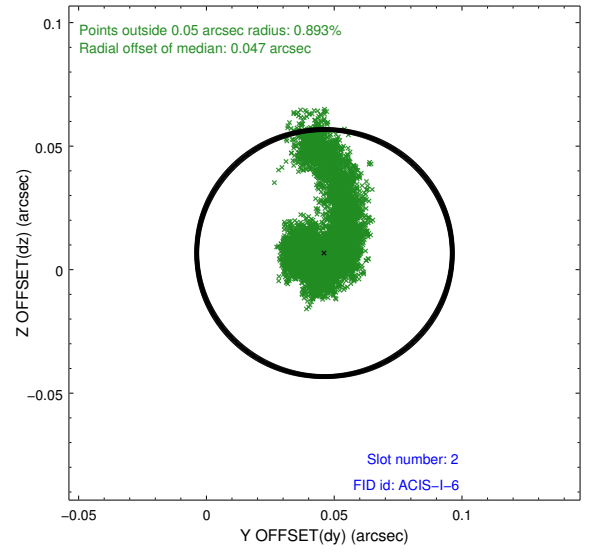
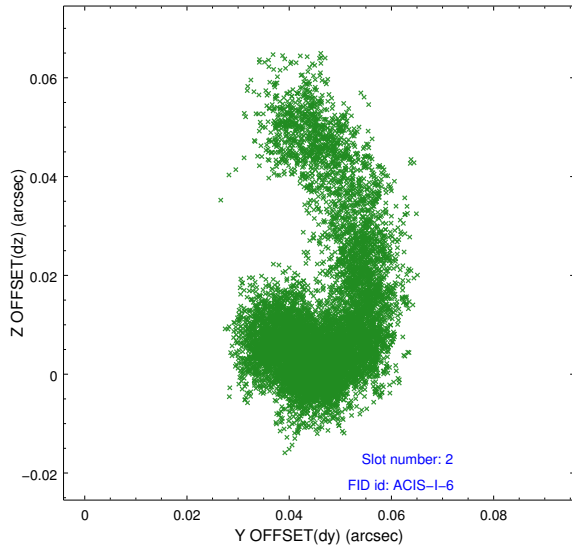
2.5.1 Slot 0



2.5.2 Slot 1



2.5.3 Slot 2



A Summary

A.1 Status

V&V Scientist	Jen Lauer
V&V Date (YYYY-MM-DD)	2012.02.28
V&V Edition	1
V&V Disposition and Status	OK
V&V Charge Time	37.540836257398

A.2 Comments

Optional chip ACIS-S3 not used.