

V&V Reference Report

L2 ASCDS Version : 8.4.5

Observation 140 - L2 Version 4
Chandra X-Ray Center

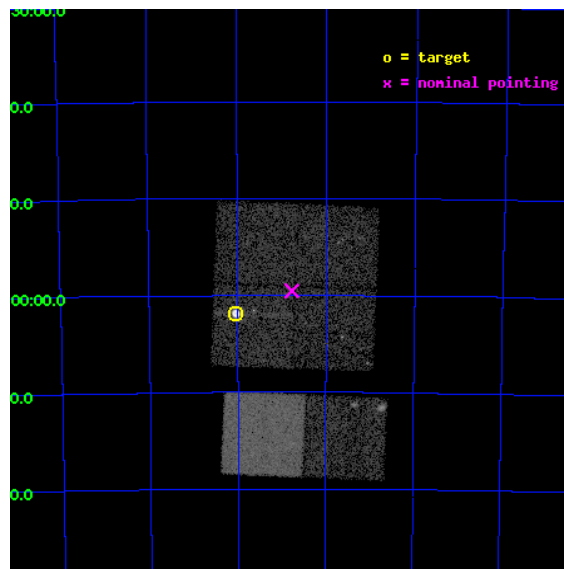
L2 Processing Date : Aug 25 2012

Contents

1	Front	2
2	OBI	3
2.1	OBI	3
2.1.1	Images	3
2.1.2	Bias	3
2.1.3	Parameters	4
2.1.4	Events	4
2.2	Compared Parameters	5
2.3	Aspect	6
2.4	Star Slots	9
2.4.1	Slot 3	9
2.4.2	Slot 4	10
2.4.3	Slot 5	11
2.4.4	Slot 6	12
2.4.5	Slot 7	13
2.5	FID Slots	14
2.5.1	Slot 0	14
2.5.2	Slot 1	15
2.5.3	Slot 2	16
A	Summary	17
A.1	Status	17
A.2	Comments	17

1 Front

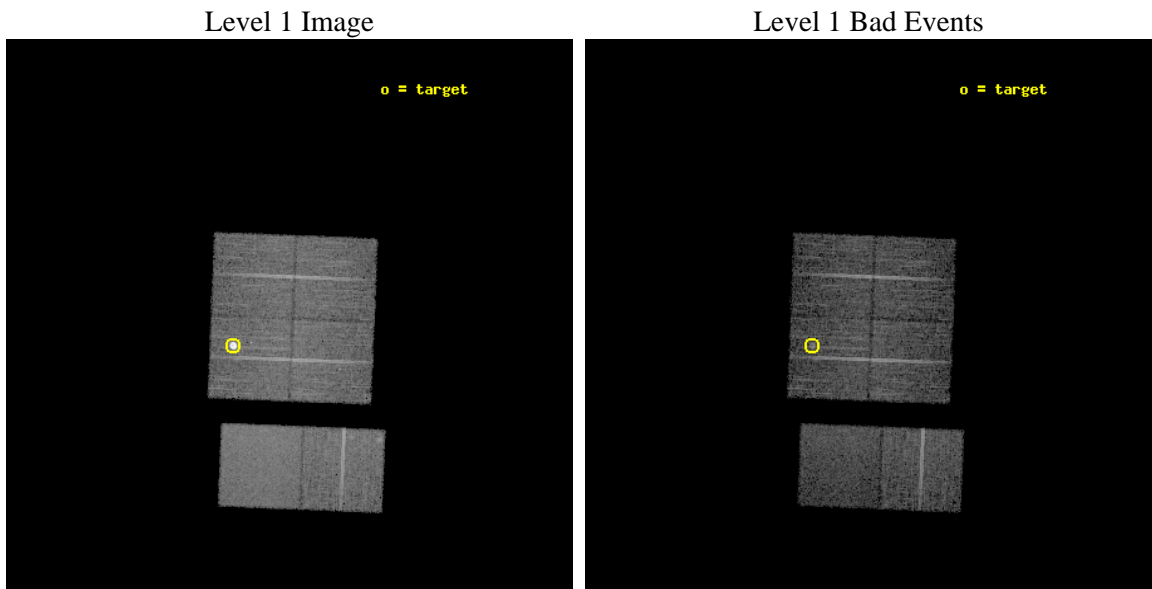
seq_num	590008	Sequence number
obs_id	140	Observation id
title	ACIS CHIP RESPONSE TO LINES WITH E=0.6-1.5 KEV	Proposal title
observer	Dr. CXC Calibration	Principal investigator
object	E0102-72.3 [Chip I3, T=120, Offsets=-5,2,0]	Source name
dtcycle	0	
cycle	P	events from which exps? Prim/Second/Both
ra_targ	16.01	Observer's specified target RA [deg]
dec_targ	-72.032028	Observer's specified target Dec [deg]
ra_nom	15.69266038669	Nominal RA [deg]
dec_nom	-71.992235172349	Nominal Dec [deg]
roll_nom	182.30272799423	Nominal Roll [deg]
revision	4	Processing version of data
ontime	8345.1080762893	Sum of GTIs [s]
livetime	8239.4372930065	Livetime [s]
ontime0	8345.1081062108	Sum of GTIs [s]
ontime1	8345.1081062108	Sum of GTIs [s]
ontime2	8345.1080762893	Sum of GTIs [s]
ontime3	8345.1080762893	Sum of GTIs [s]
ontime6	8345.1081062108	Sum of GTIs [s]
ontime7	8345.1080762893	Sum of GTIs [s]
l2events	89544	Number of level 2 events



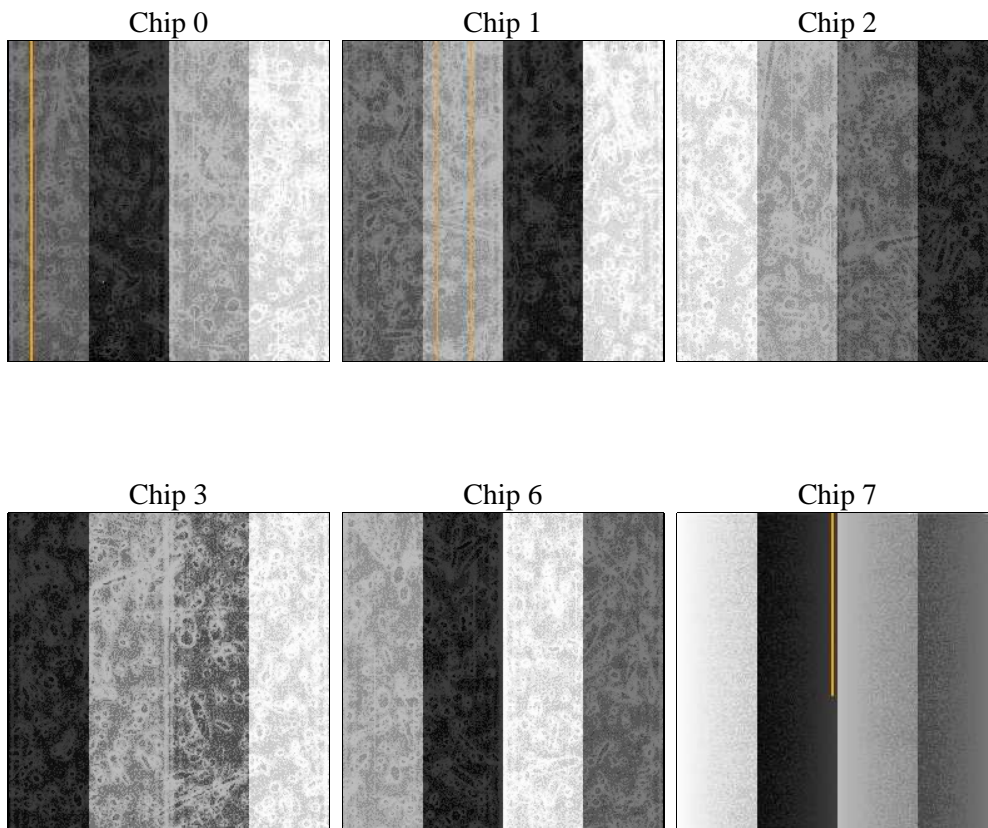
2 OBI

2.1 OBI

2.1.1 Images



2.1.2 Bias



2.1.3 Parameters

obi_num	1	Obi number	sched_exp_time	8000.000000	[s] Scheduled observation exposure time
ascdsver	8.4.5	Processing system revision	ontime	8345.1080762893	Sum of GTIs [s]
caldbver	4.5.1.1	 	ontime0	8345.1081062108	Sum of GTIs [s]
date	2012-08-25T03:28:20	Date and time of file creation	ontime1	8345.1081062108	Sum of GTIs [s]
revision	4	Processing version of data	ontime2	8345.1080762893	Sum of GTIs [s]
			ontime3	8345.1080762893	Sum of GTIs [s]
			ontime6	8345.1081062108	Sum of GTIs [s]
			ontime7	8345.1080762893	Sum of GTIs [s]
			l1events	395783	Number of level 1 events

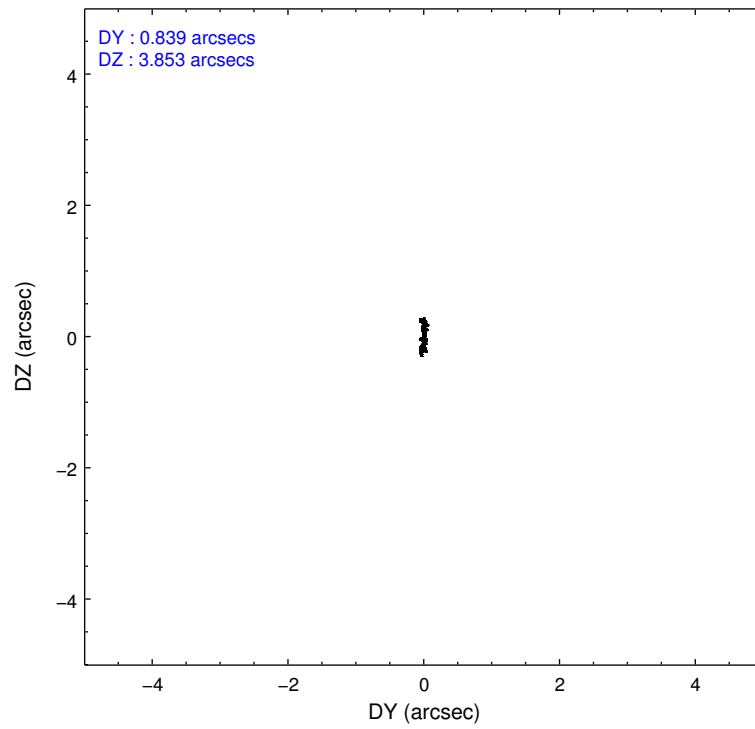
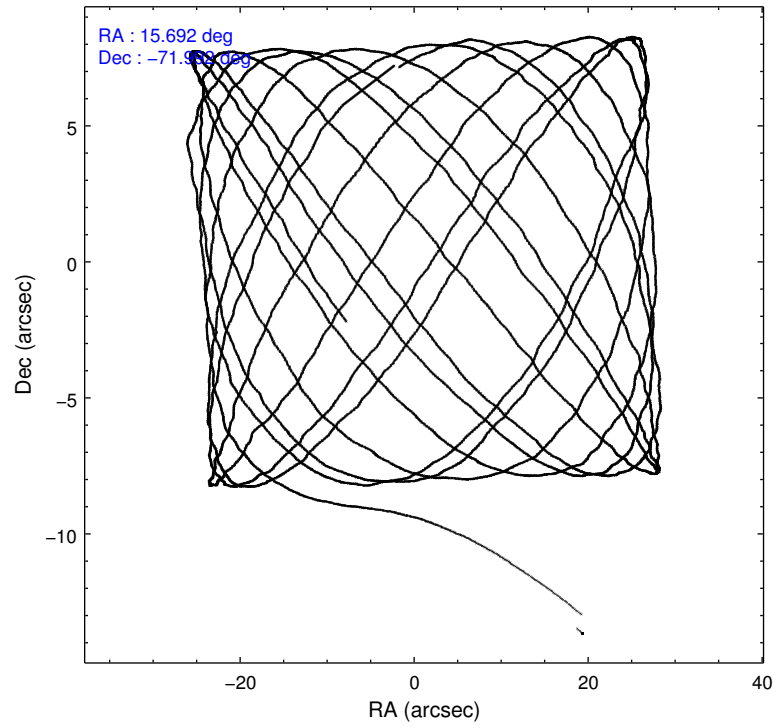
2.1.4 Events

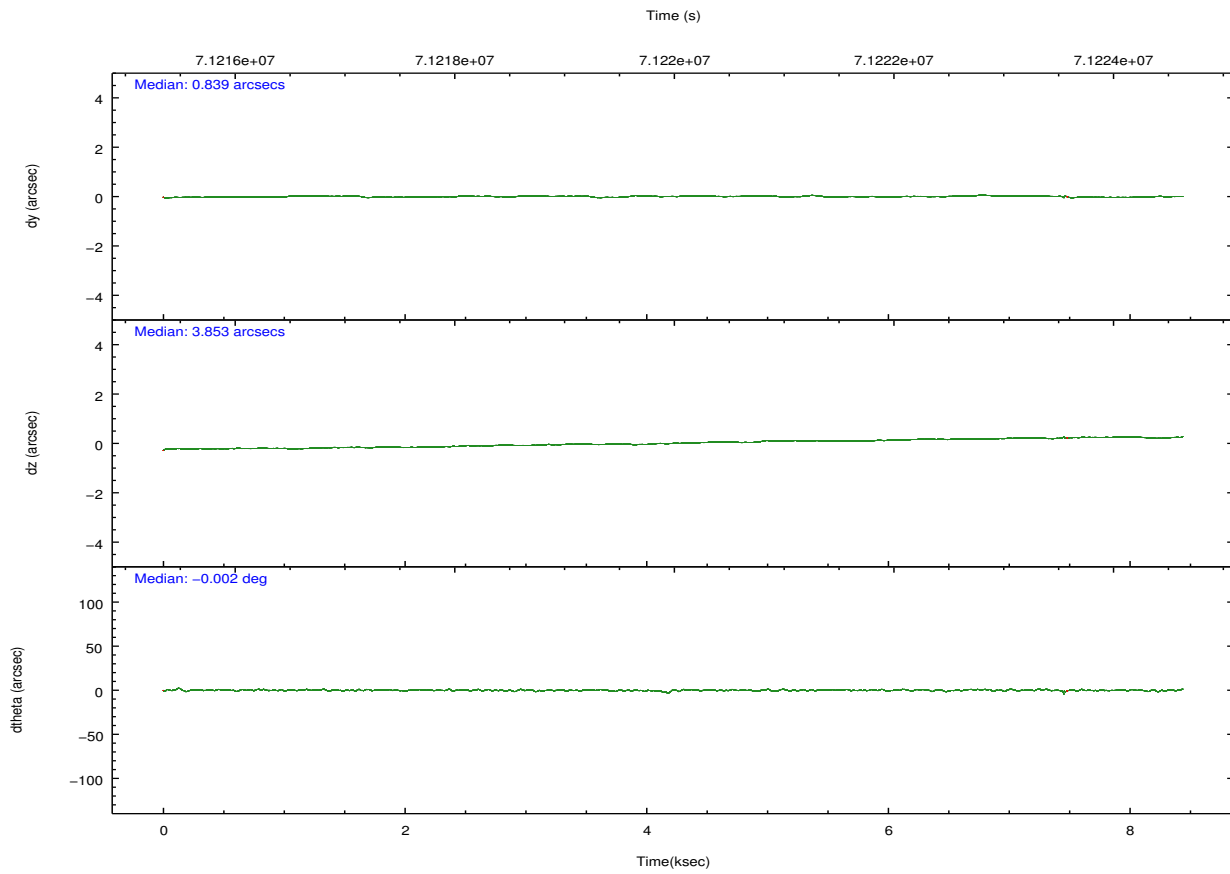
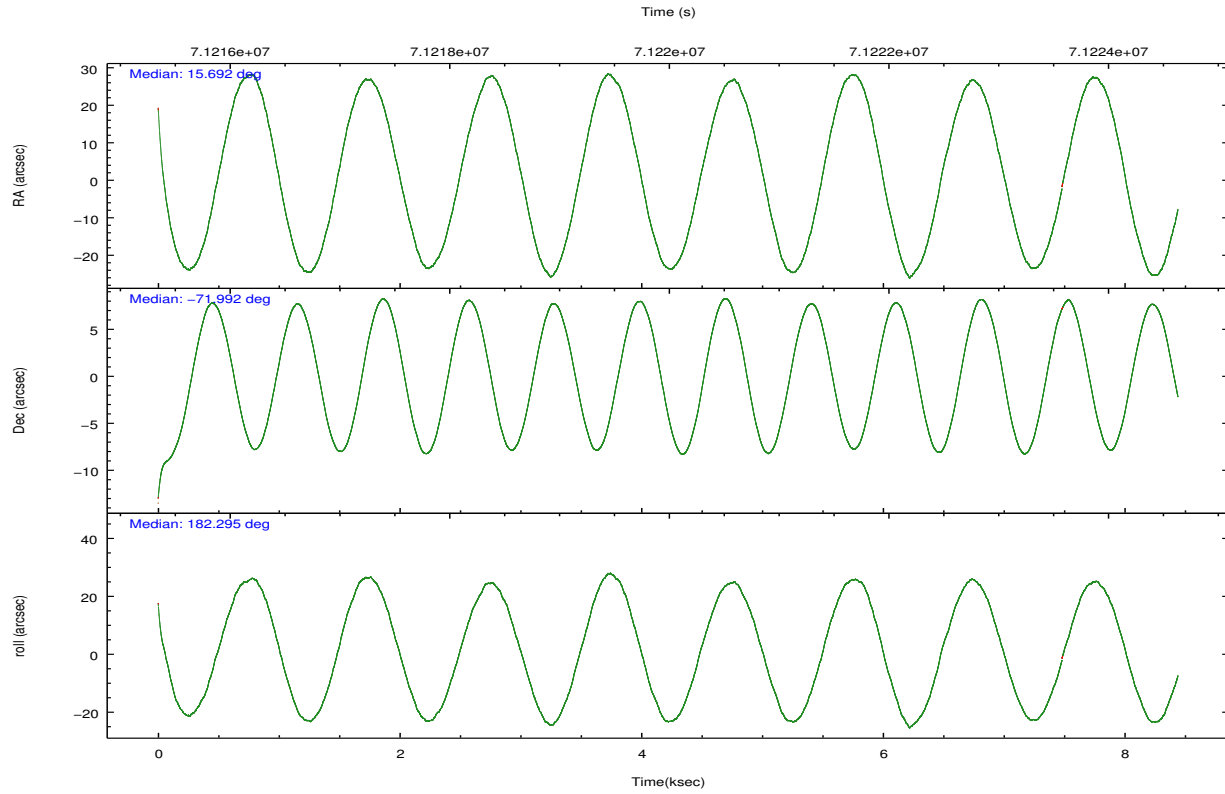
	ccd 0	ccd 1	ccd 2	ccd 3	ccd 6	ccd 7		ccd 0	ccd 1	ccd 2	ccd 3	ccd 6	ccd 7
level 1 events	54892	55006	60416	92124	63321	70024	grade 0 events	3112	3000	2865	30686	3293	3042
rejected events	48116	48029	54081	54411	56116	39690		5%	5%	4%	33%	5%	4%
rejected %	87%	87%	89%	59%	88%	56%	grade 1 events	32	22	10	313	28	69
								0%	0%	0%	0%	0%	0%
							grade 2 events	1296	1397	1329	3463	1364	6028
								2%	2%	2%	3%	2%	8%
							grade 3 events	691	729	615	1209	654	2869
								1%	1%	1%	1%	1%	4%
							grade 4 events	616	729	578	1156	622	2792
								1%	1%	0%	1%	0%	3%
							grade 5 events	1835	1985	1759	2079	2152	6547
								3%	3%	2%	2%	3%	9%
							grade 6 events	1070	1135	957	1262	1280	15633
								1%	2%	1%	1%	2%	22%
							grade 7 events	46240	46009	52303	51956	53928	33044
								84%	83%	86%	56%	85%	47%

2.2 Compared Parameters

Parameter	Planned	Actual	Parameter	Planned	Actual
Instrument	ACIS	ACIS	Obspar format version number	7	7
Detector	ACIS-012367	ACIS-012367	Obspar file type	PREDICTED	ACTUAL
Grating	NONE	NONE	Obspar update status	NONE	UPDATED
Data mode	FAINT	FAINT	Number of optional ACIS chips dropped	0	0
Observation mode	POINTING	POINTING	On-chip summing requested	N	N
[deg] Pointing RA	15.768661	15.69266038669002	Subarray requested	NONE	NONE
[deg] Pointing Dec	-71.977609	-71.99223517234915	Alternating exposures requested	N	N
[deg] Pointing Roll	182.166315	182.3027279942289	[s] Primary exposure time	0.000000	3.2
[mm] SIM focus pos	-0.782348	-0.7809083437167272			
[mm] SIM defocus	0	0.001439871863259334			
[mm] SIM translation stage pos	-233.592463	-233.5874344608287			
[mm] SIM translation stage offset	0	-0.005018542100998502			
[s] Observation start time (MET)	71216206.184000	71214862.711082			
Observation start date	2000-04-04T06:15:42	2000-04-04T05:54:22			
[s] Observation end time (MET)	71224206.184000	71224339.348929			
Observation end date	2000-04-04T08:29:02	2000-04-04T08:32:19			
Read mode	TIMED	TIMED			

2.3 Aspect



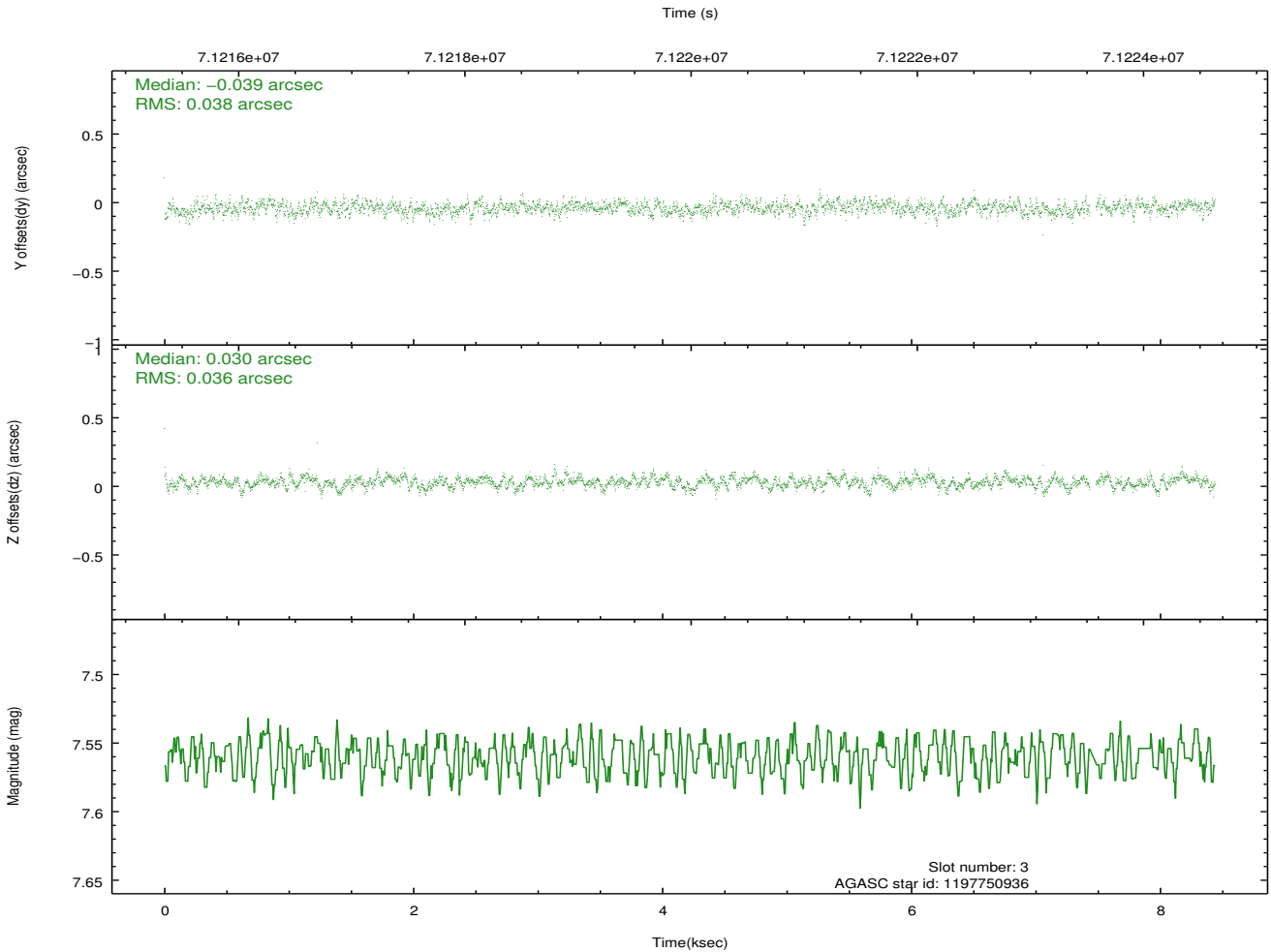
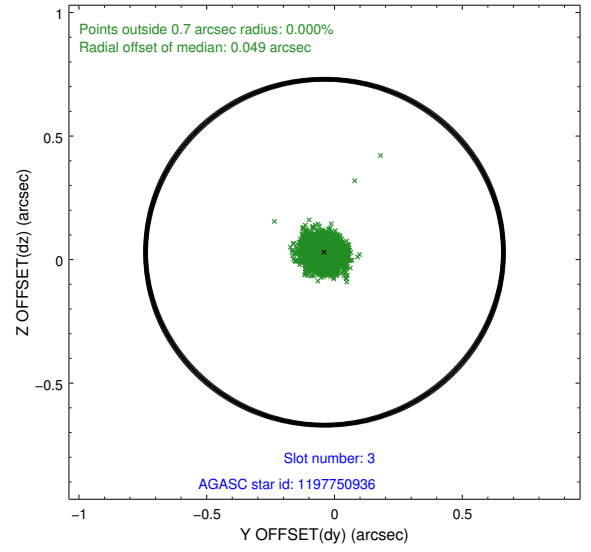
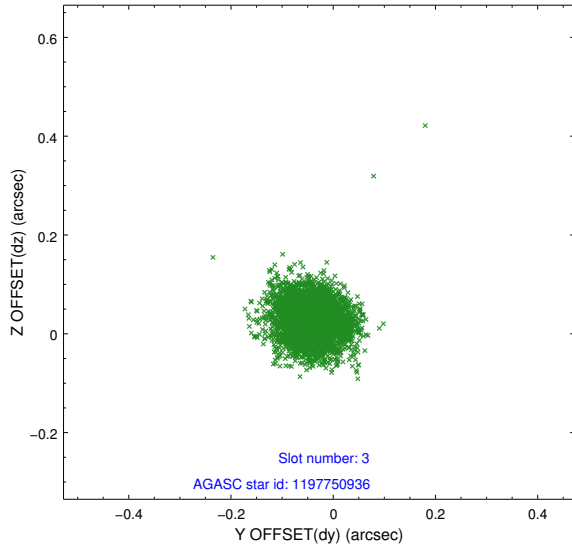


Slot Statistics

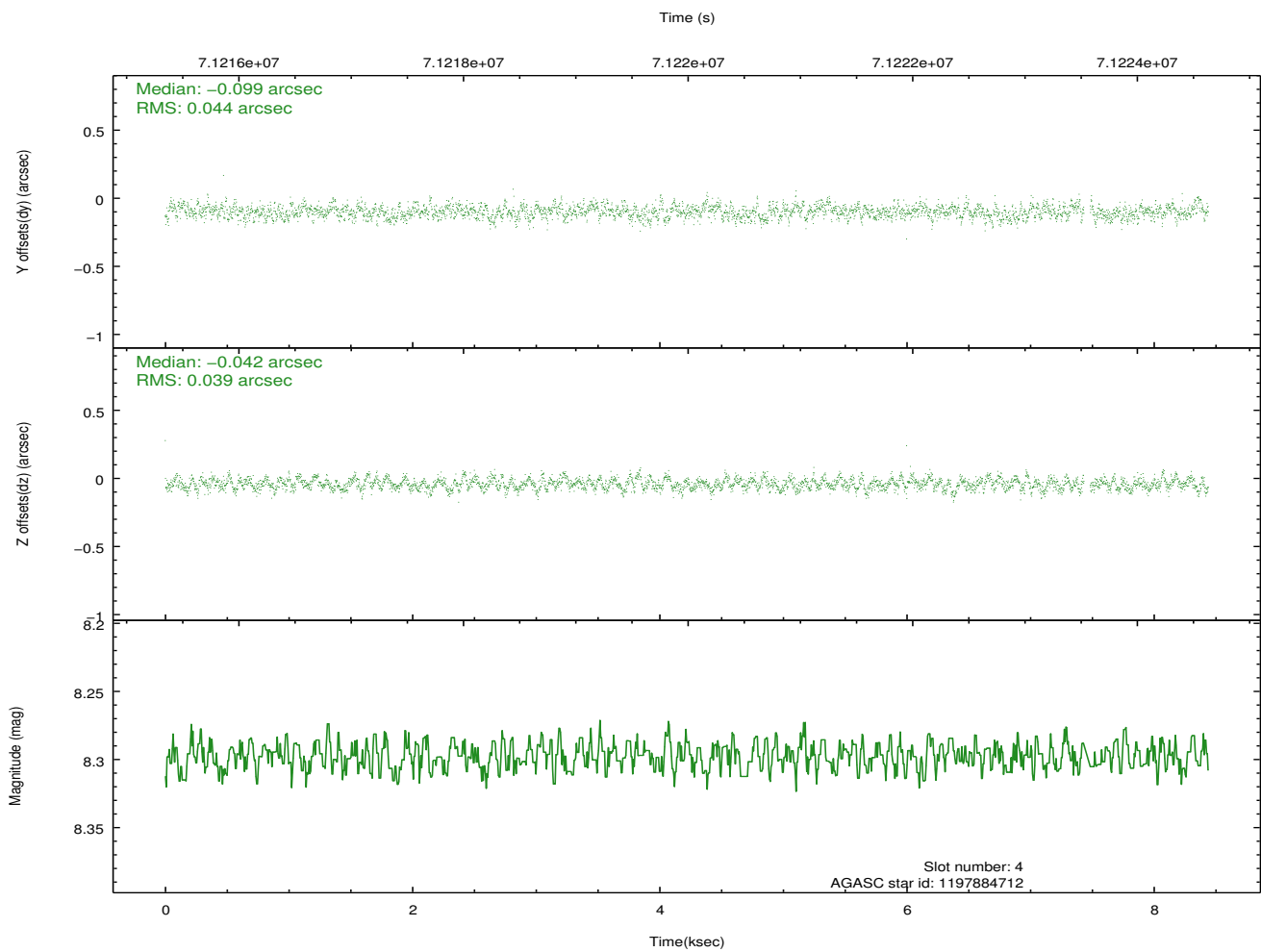
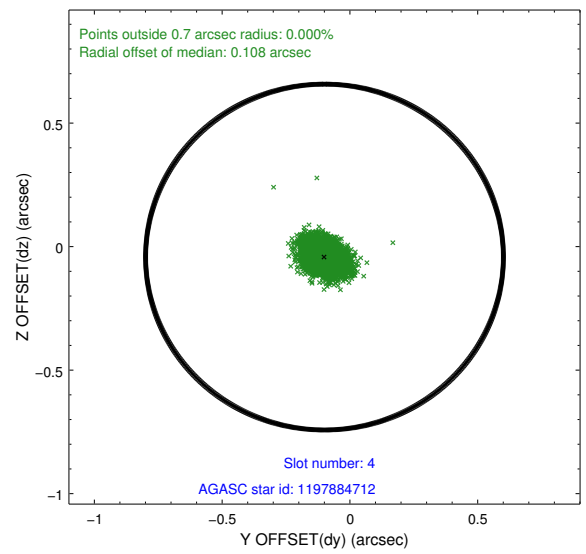
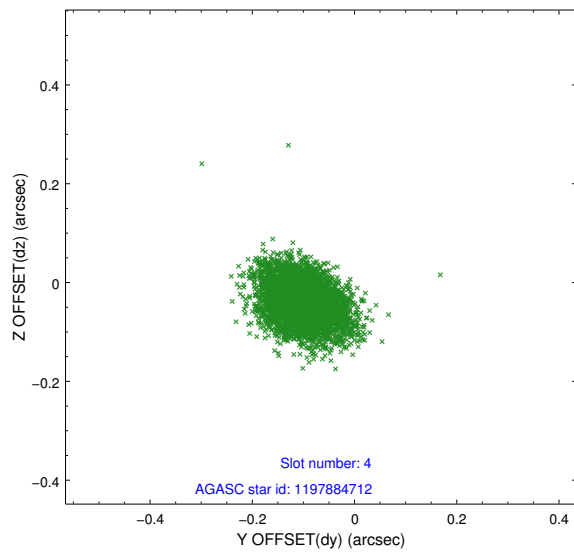
slot	status	id	mag	n_pts	med_dy	med_dz	dr1	dr2	ra	dec	mean_y	mean_z
0	FID	ACIS-I-2	7.15	2049	-0.039	-0.033	0.009	0.017	0.000000	0.000000	-755.20	-833.57
1	FID	ACIS-I-4	7.20	2048	-0.008	0.039	0.008	0.013	0.000000	0.000000	2158.60	1072.34
2	FID	ACIS-I-5	7.23	2049	-0.054	0.063	0.009	0.015	0.000000	0.000000	-1808.18	1070.98
3	GUIDE	1197750936	7.56	4093	-0.039	0.030	0.055	0.090	15.387940	-71.549550	375.05	-1555.07
4	GUIDE	1197884712	8.30	4092	-0.099	-0.042	0.062	0.102	16.087398	-72.252690	-312.58	1003.05
5	GUIDE	1197878768	9.61	4090	-0.030	0.138	0.121	0.190	16.656786	-71.304581	-1115.63	-2374.92
6	GUIDE	1197884656	10.31	4026	0.082	-0.041	0.120	0.193	16.232502	-71.882738	-532.16	-320.66
7	GUIDE	1197885104	9.36	4090	0.084	-0.087	0.098	0.163	17.845067	-72.189368	-2254.58	886.95

2.4 Star Slots

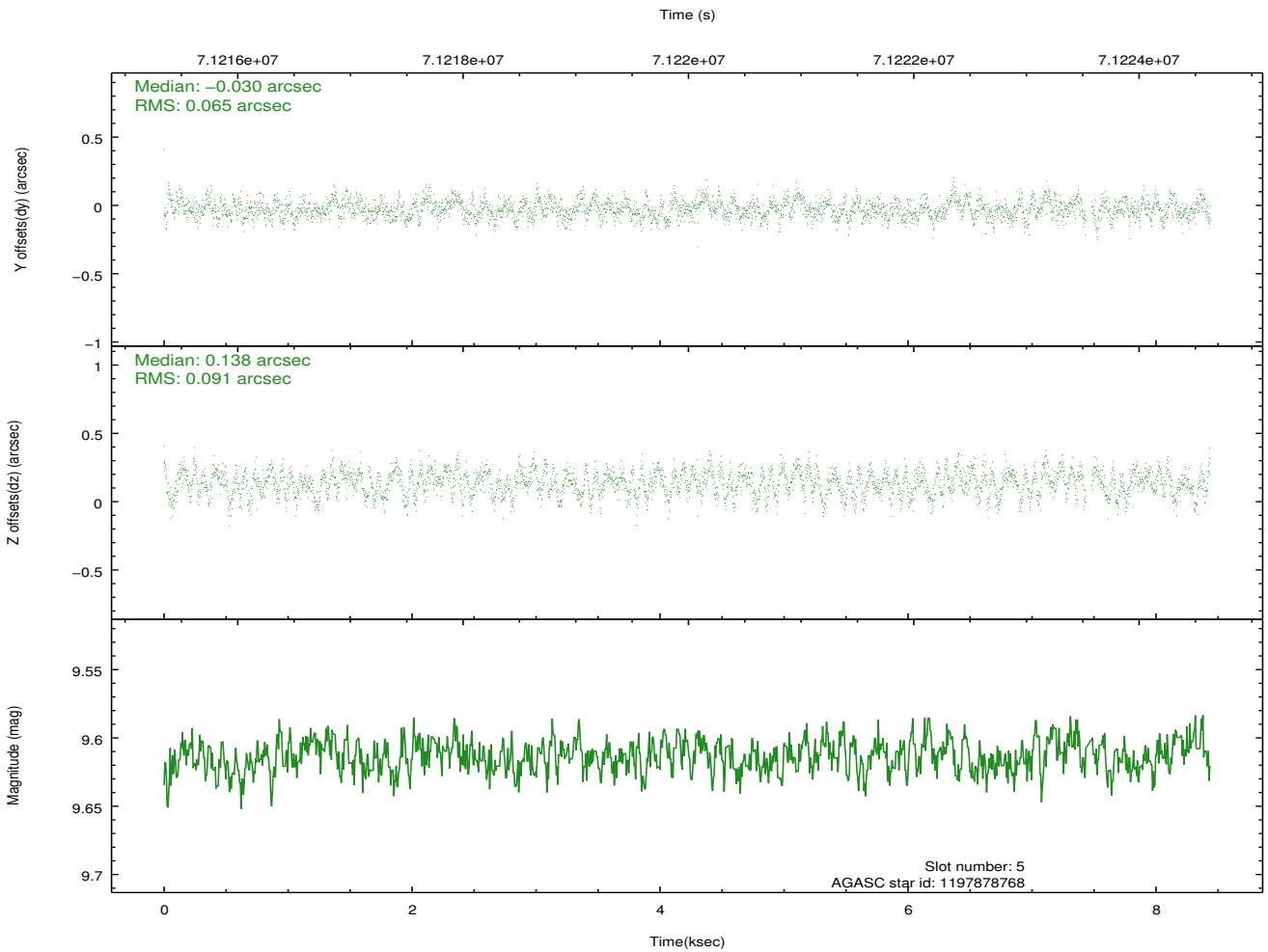
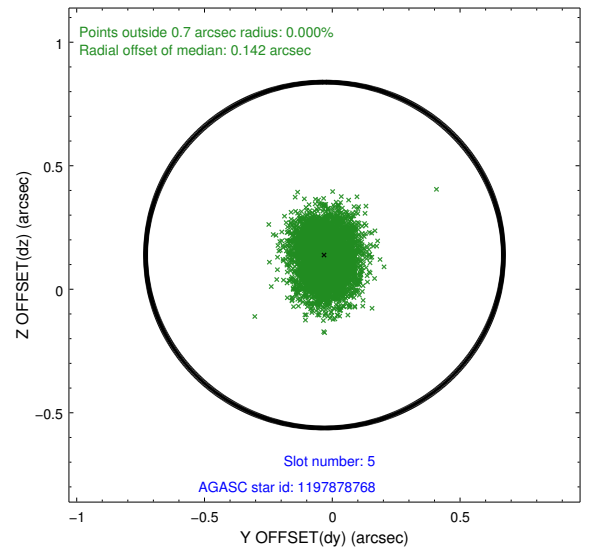
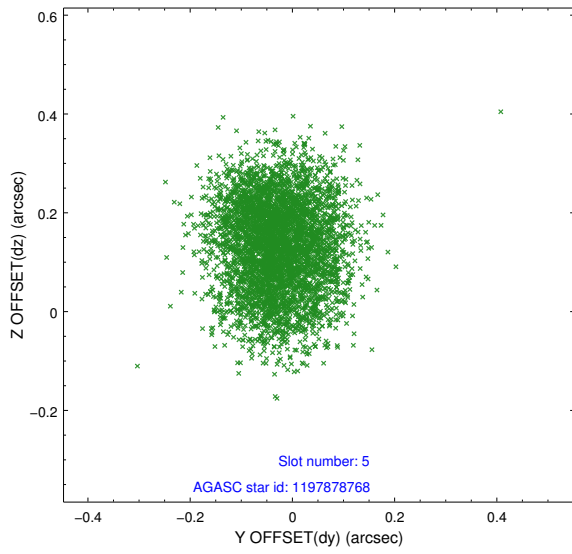
2.4.1 Slot 3



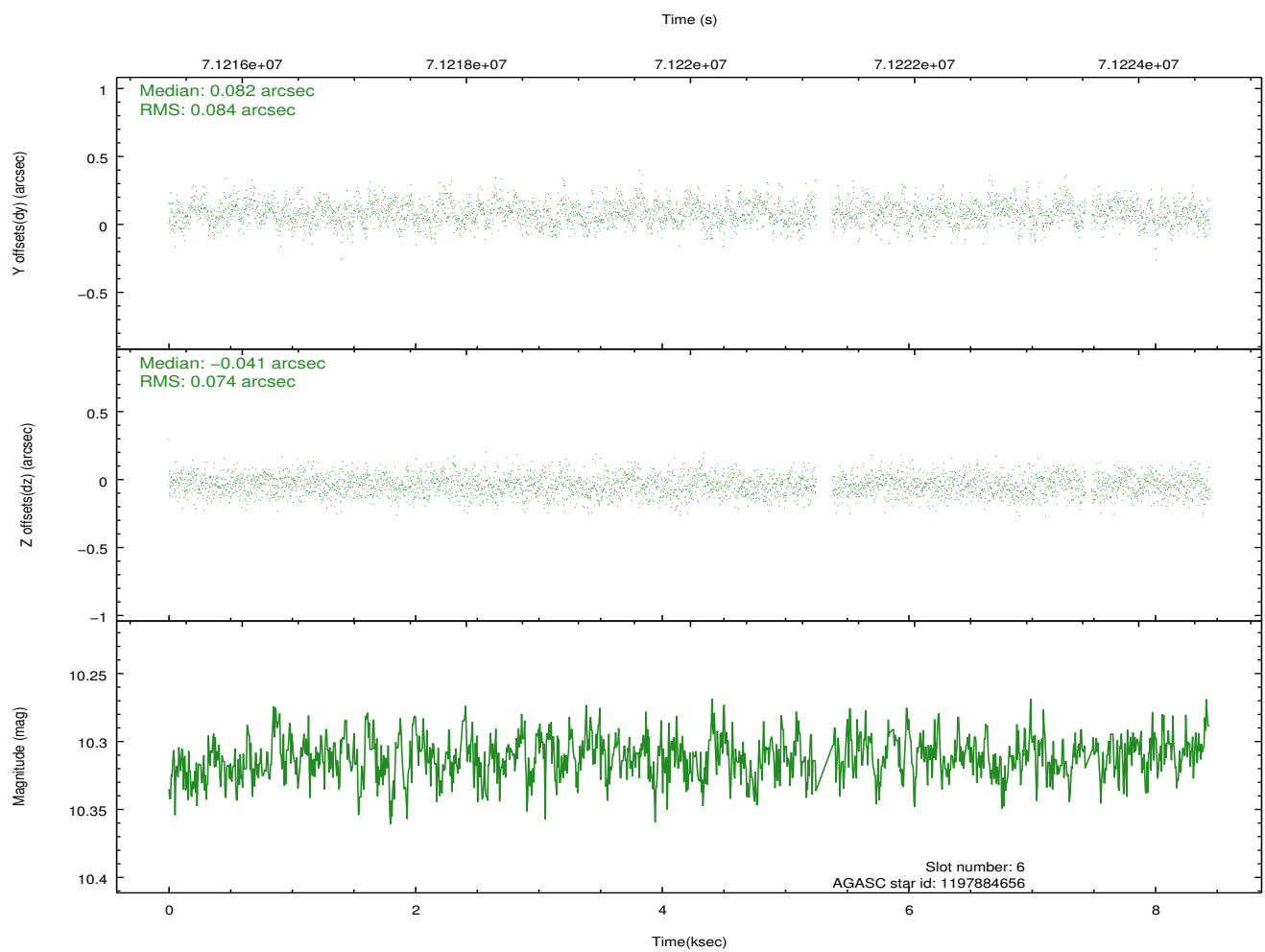
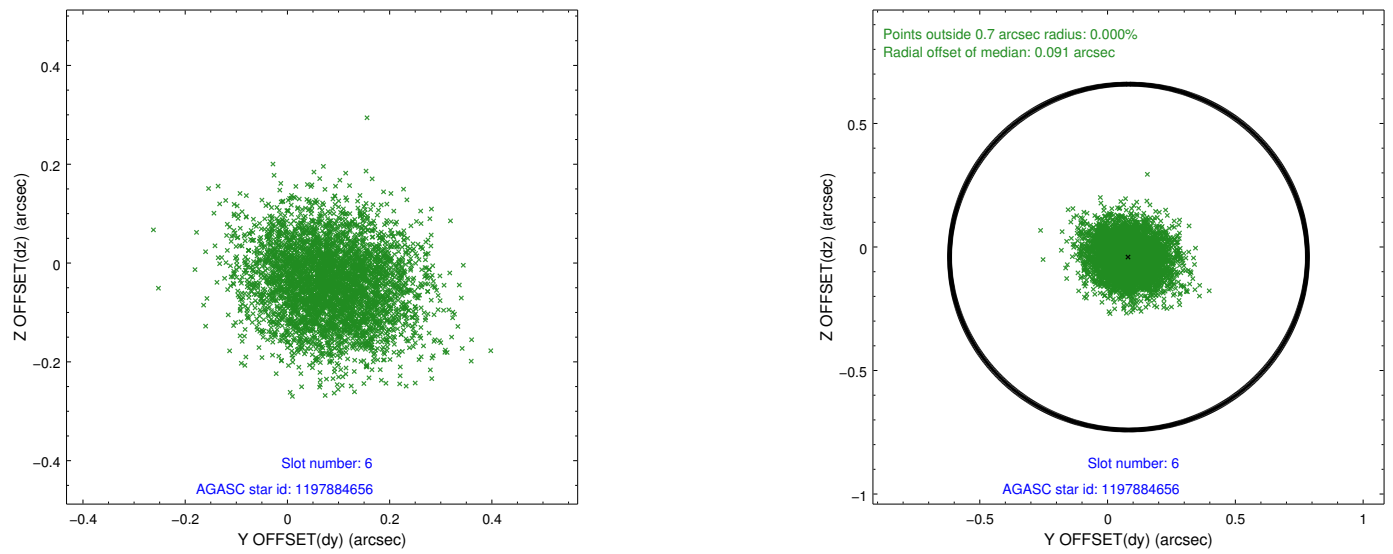
2.4.2 Slot 4



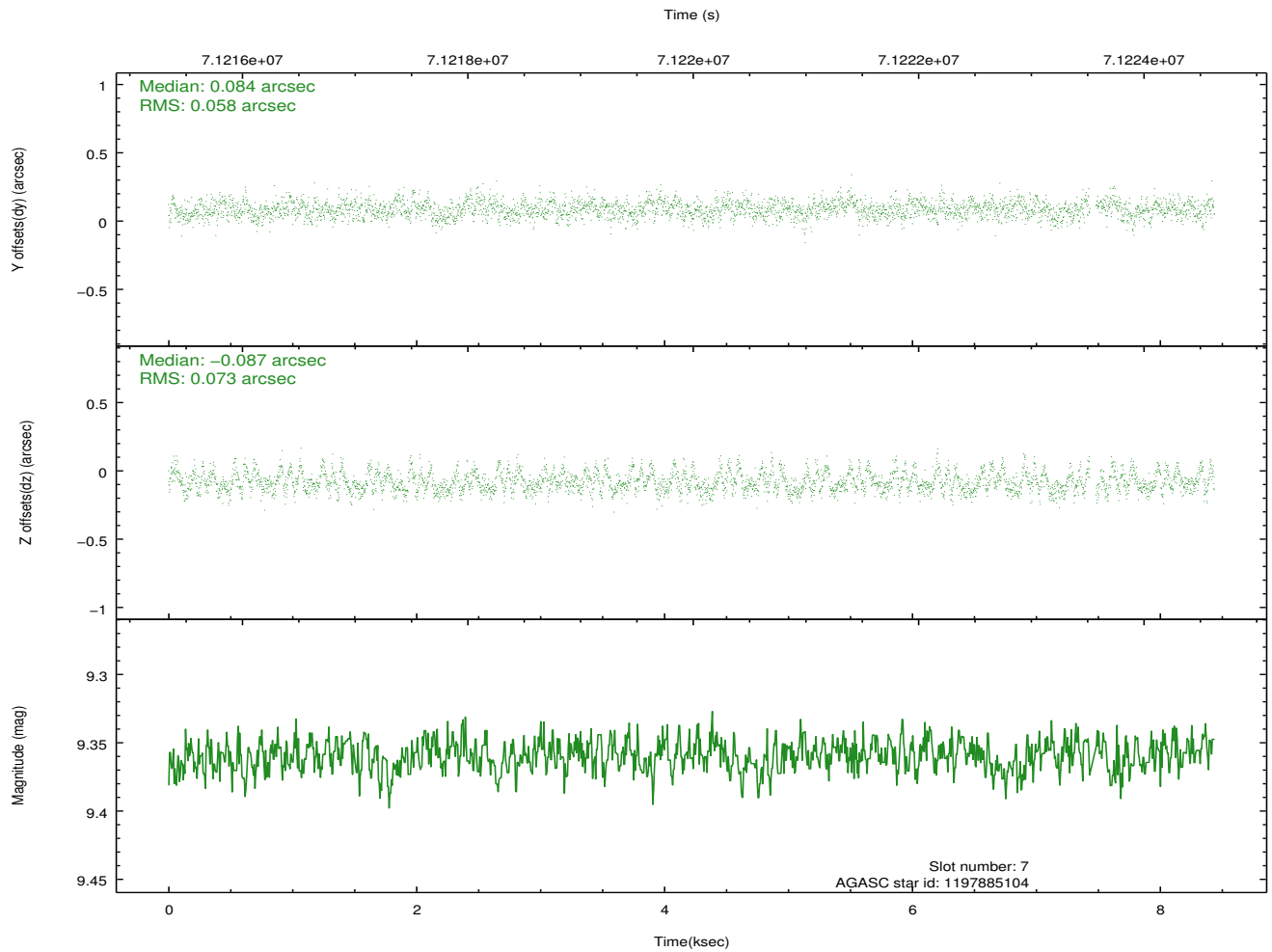
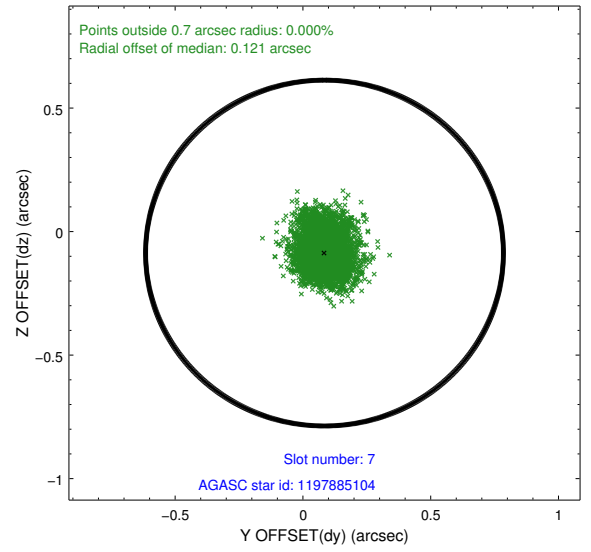
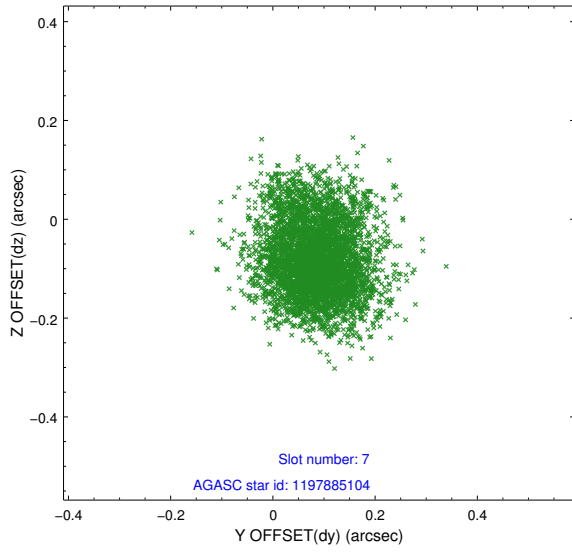
2.4.3 Slot 5



2.4.4 Slot 6

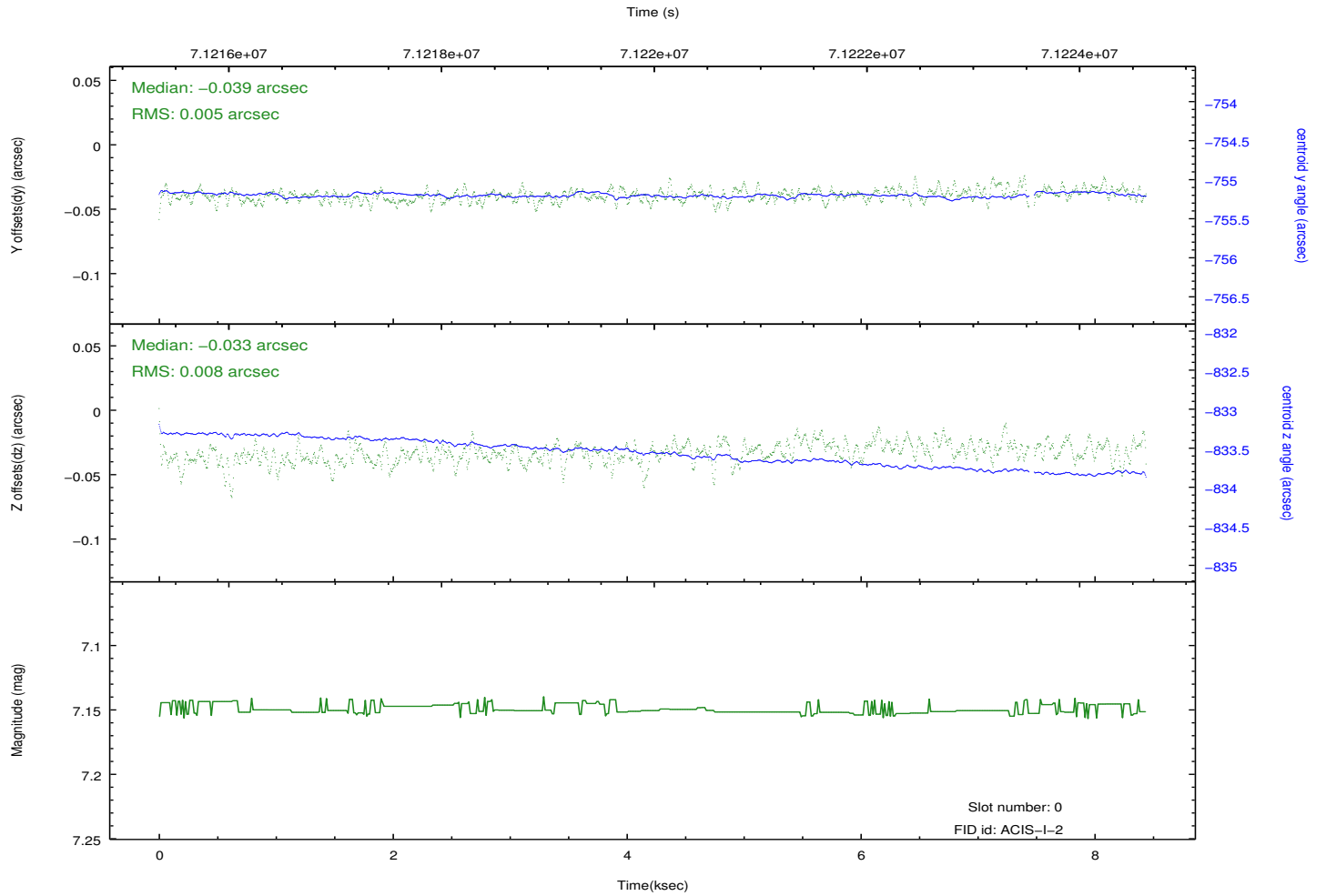
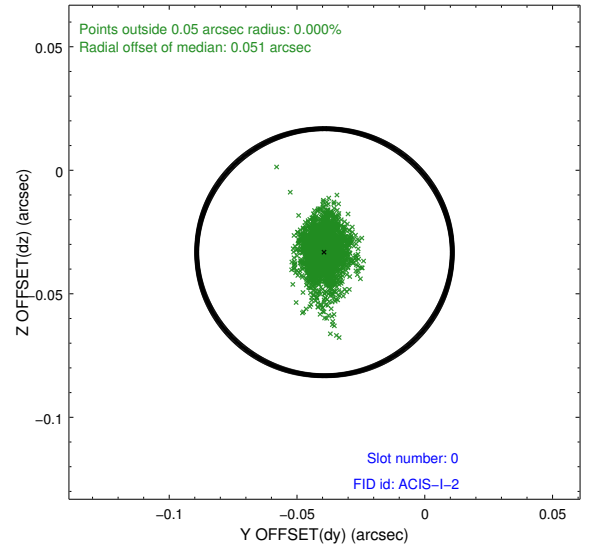
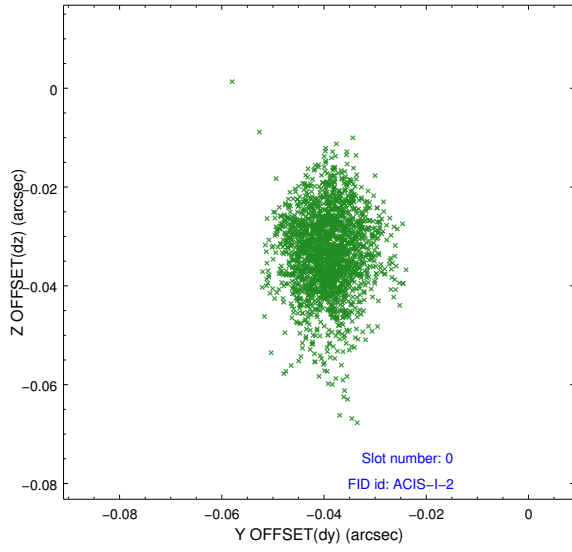


2.4.5 Slot 7

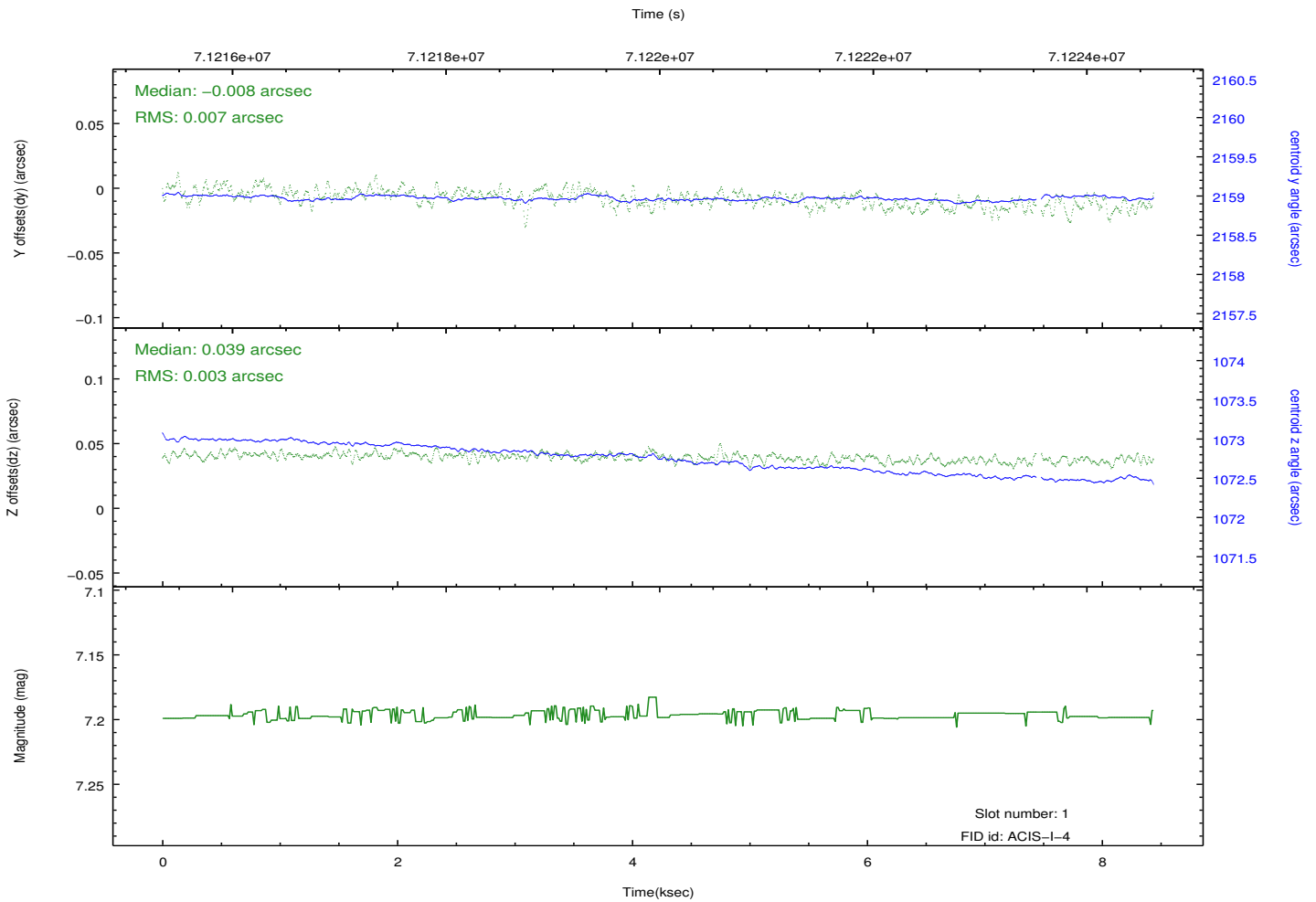
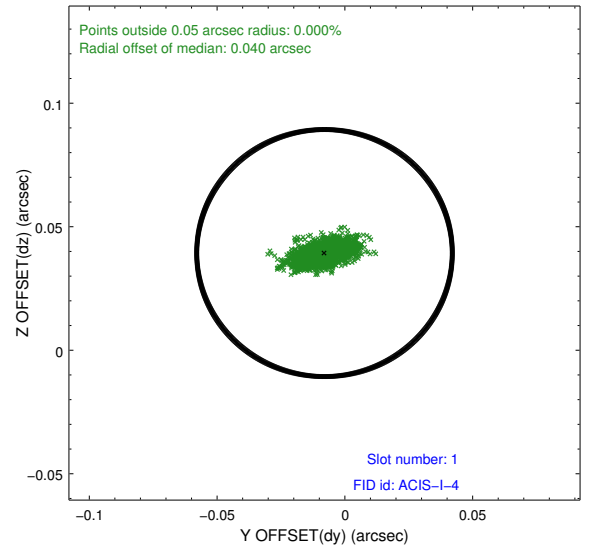
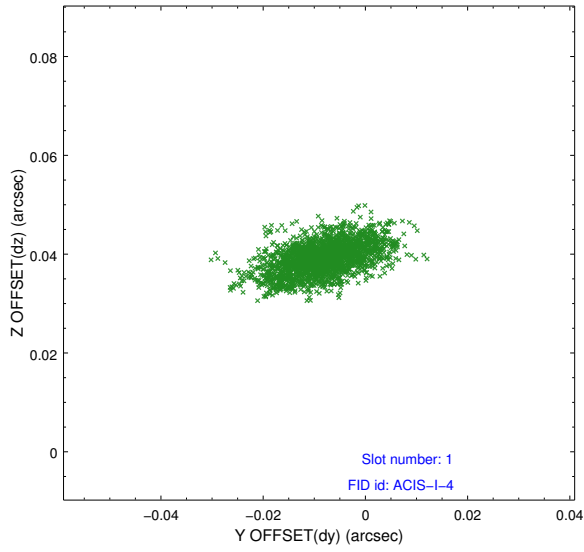


2.5 FID Slots

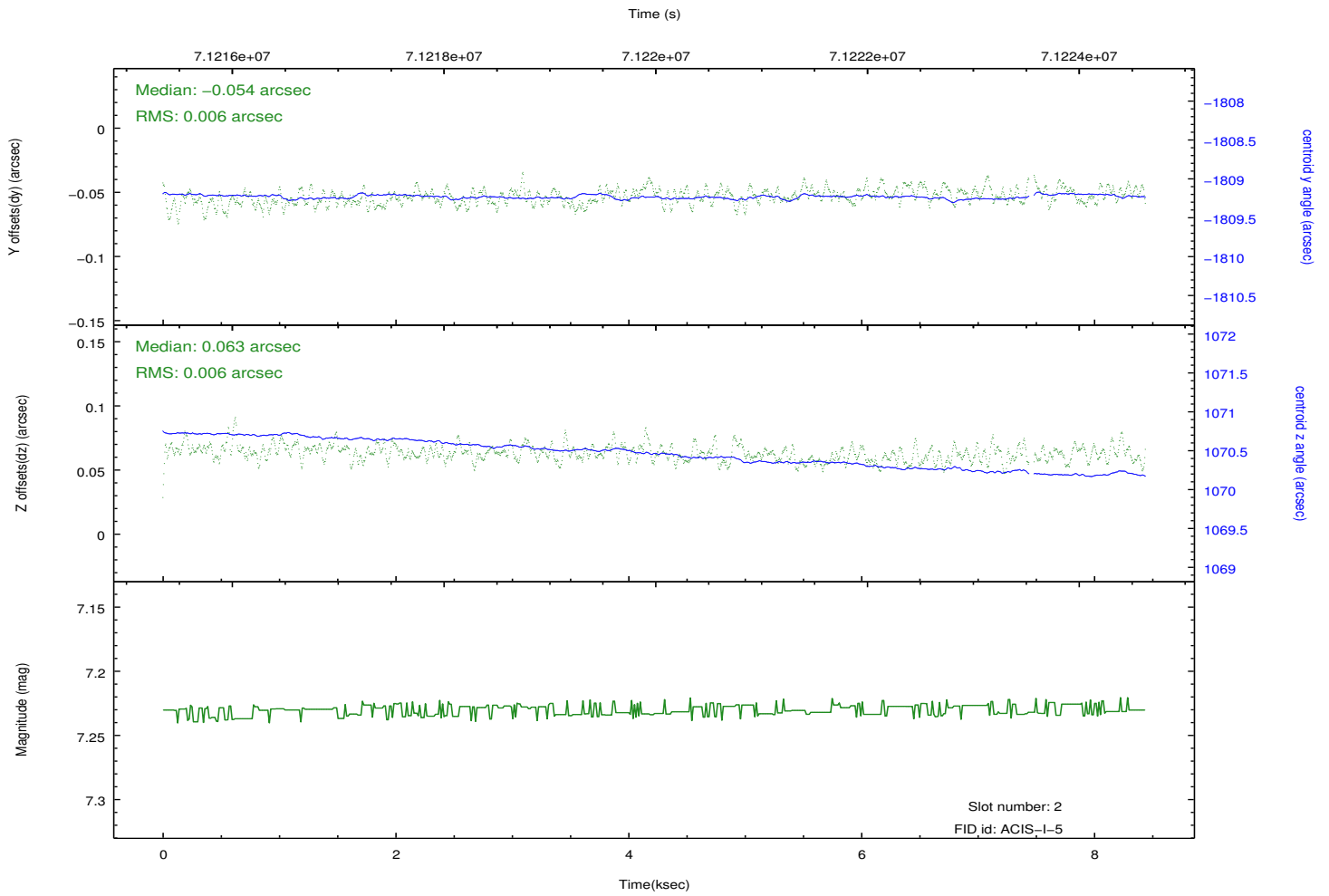
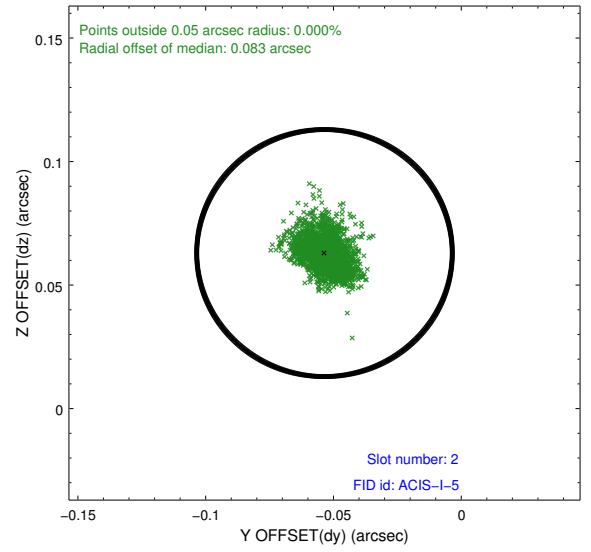
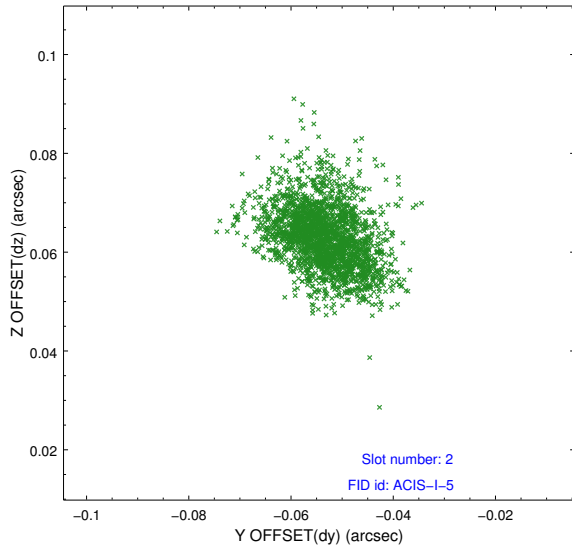
2.5.1 Slot 0



2.5.2 Slot 1



2.5.3 Slot 2



A Summary

A.1 Status

V&V Scientist	Jen Lauer
V&V Date (YYYY-MM-DD)	2012.08.28
V&V Edition	1
V&V Disposition and Status	OK
V&V Charge Time	8.345

A.2 Comments