

V&V Reference Report

L2 ASCDS Version : 8.4.4

Observation 14020 - L2 Version 1
Chandra X-Ray Center

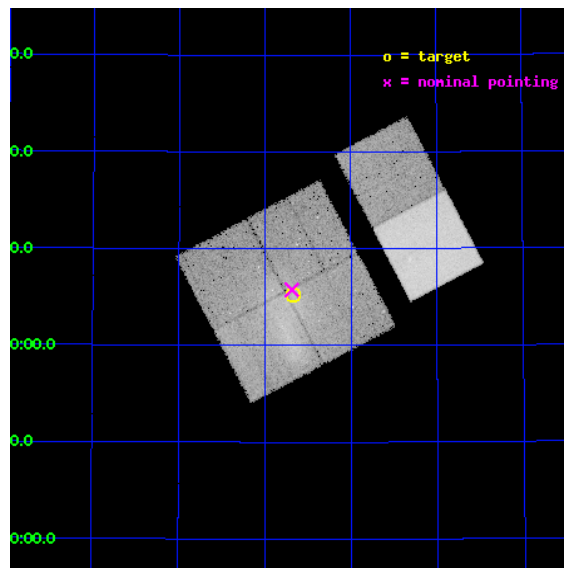
L2 Processing Date : Apr 22 2012

Contents

1	Front	2
2	OBI	3
2.1	OBI	3
2.1.1	Images	3
2.1.2	Bias	3
2.1.3	Parameters	4
2.1.4	Events	4
2.2	Compared Parameters	5
2.3	Aspect	6
2.4	Star Slots	9
2.4.1	Slot 3	9
2.4.2	Slot 4	10
2.4.3	Slot 5	11
2.4.4	Slot 6	12
2.4.5	Slot 7	13
2.5	FID Slots	14
2.5.1	Slot 0	14
2.5.2	Slot 1	15
2.5.3	Slot 2	16
A	Summary	17
A.1	Status	17
A.2	Comments	17

1 Front

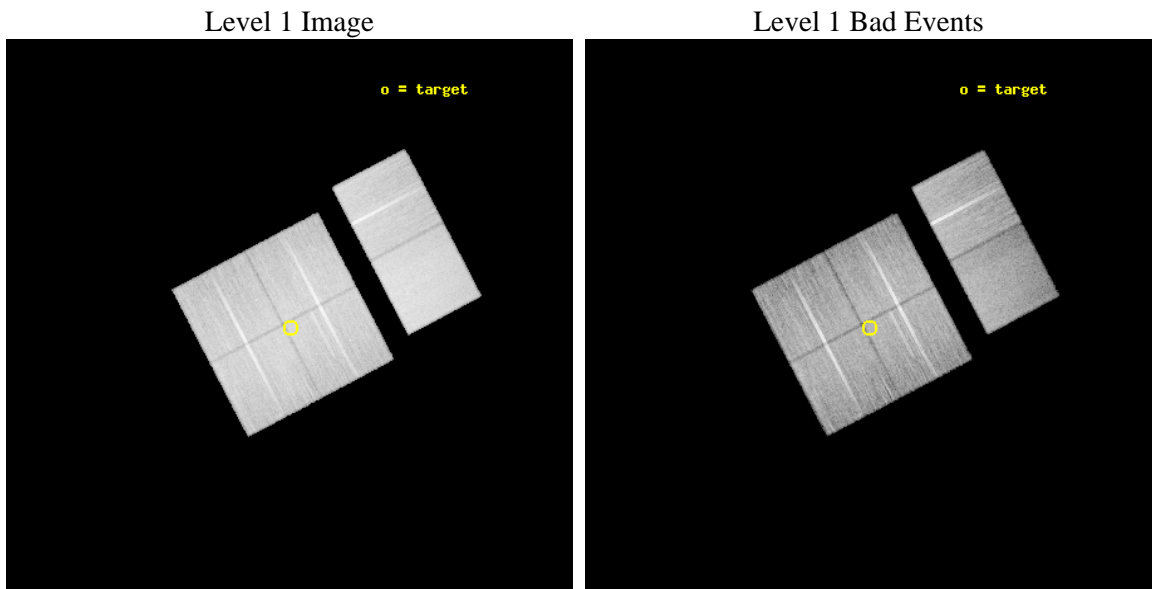
seq_num	801198	Sequence number
obs_id	14020	Observation id
title	Diffusive Shock Acceleration in a Double Radio Relic Cluster	Propo
observer	Georgiana Ogrean	Principal investigator
object	CIZA J2242.8+5301	Source name
dtycle	0	
cycle	P	events from which exps? Prim/Second/Both
ra_targ	340.66902	Observer's specified target RA [deg]
dec_targ	53.087877	Observer's specified target Dec [deg]
ra_nom	340.67147200579	Nominal RA [deg]
dec_nom	53.095825961602	Nominal Dec [deg]
roll_nom	62.280350076081	Nominal Roll [deg]
revision	1	Processing version of data
ontime	37967.898656905	Sum of GTIs [s]
livetime	37487.126262587	Livetime [s]
ontime0	37967.775536895	Sum of GTIs [s]
ontime1	37967.816576898	Sum of GTIs [s]
ontime2	37964.616646588	Sum of GTIs [s]
ontime3	37967.898656905	Sum of GTIs [s]
ontime6	37967.980736911	Sum of GTIs [s]
ontime7	37967.939696908	Sum of GTIs [s]
l2events	263949	Number of level 2 events



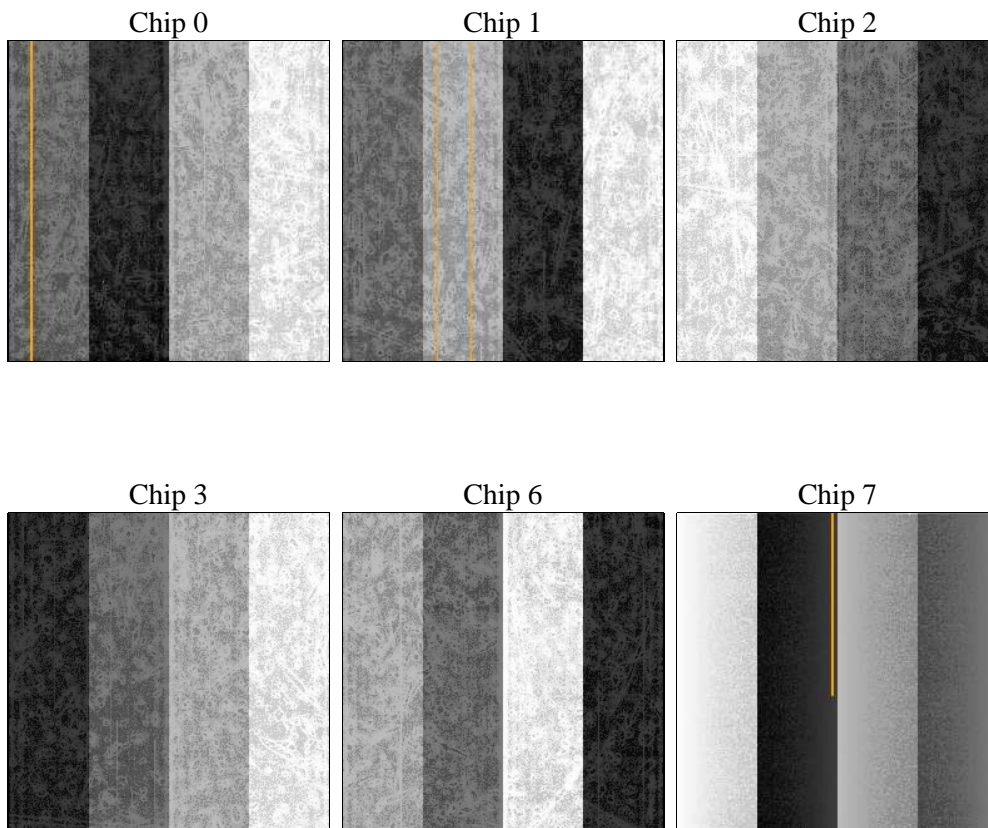
2 OBI

2.1 OBI

2.1.1 Images



2.1.2 Bias



2.1.3 Parameters

obi_num	0	Obi number	sched_exp_time	38000.000000	[s] Scheduled observation exposure time
ascdsver	8.4.4	Processing system revision	ontime	37967.898656905	Sum of GTIs [s]
caldbver	4.4.9	 	ontime0	37967.775536895	Sum of GTIs [s]
date	2012-04-22T08:18:36	Date and time of file creation	ontime1	37967.816576898	Sum of GTIs [s]
revision	1	Processing version of data	ontime2	37964.616646588	Sum of GTIs [s]
			ontime3	37967.898656905	Sum of GTIs [s]
			ontime6	37967.980736911	Sum of GTIs [s]
			ontime7	37967.939696908	Sum of GTIs [s]
			l1events	1411415	Number of level 1 events

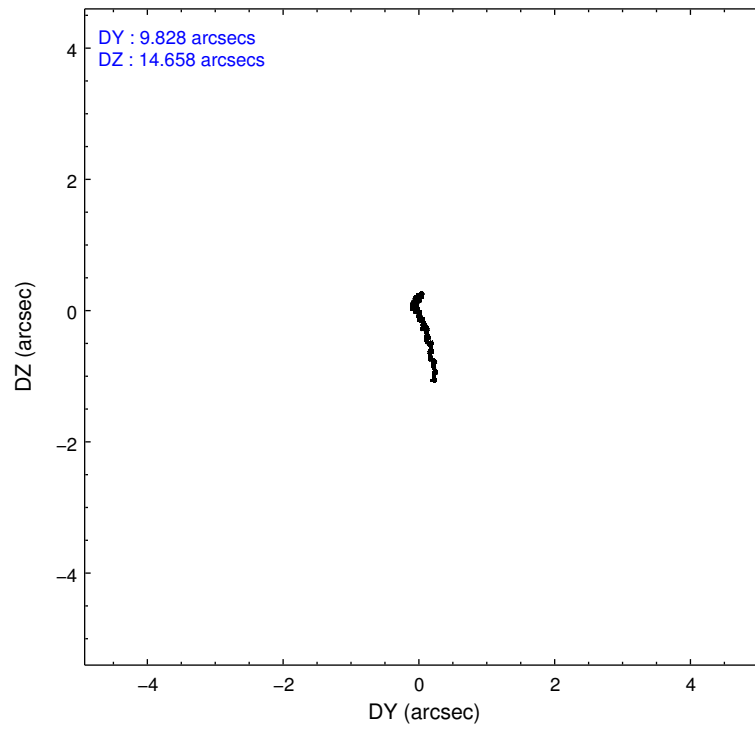
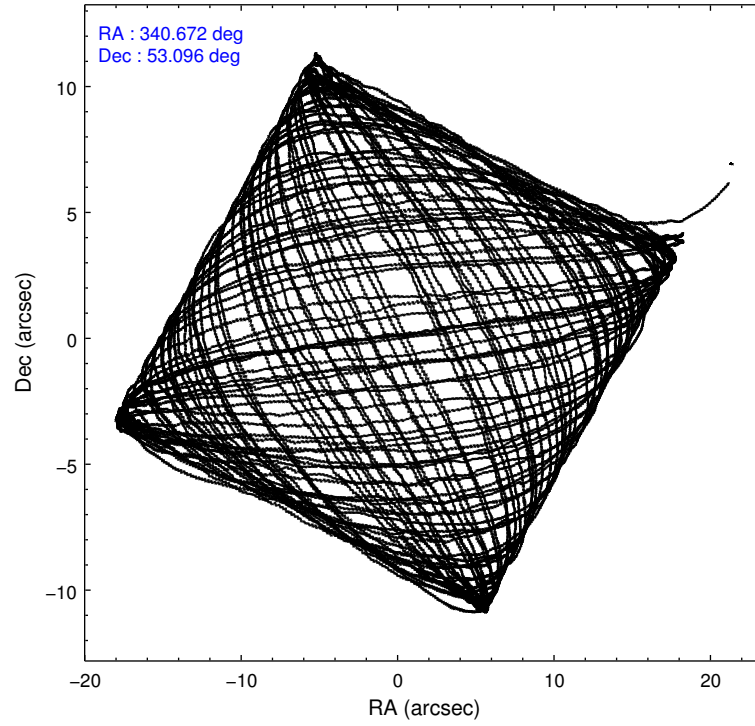
2.1.4 Events

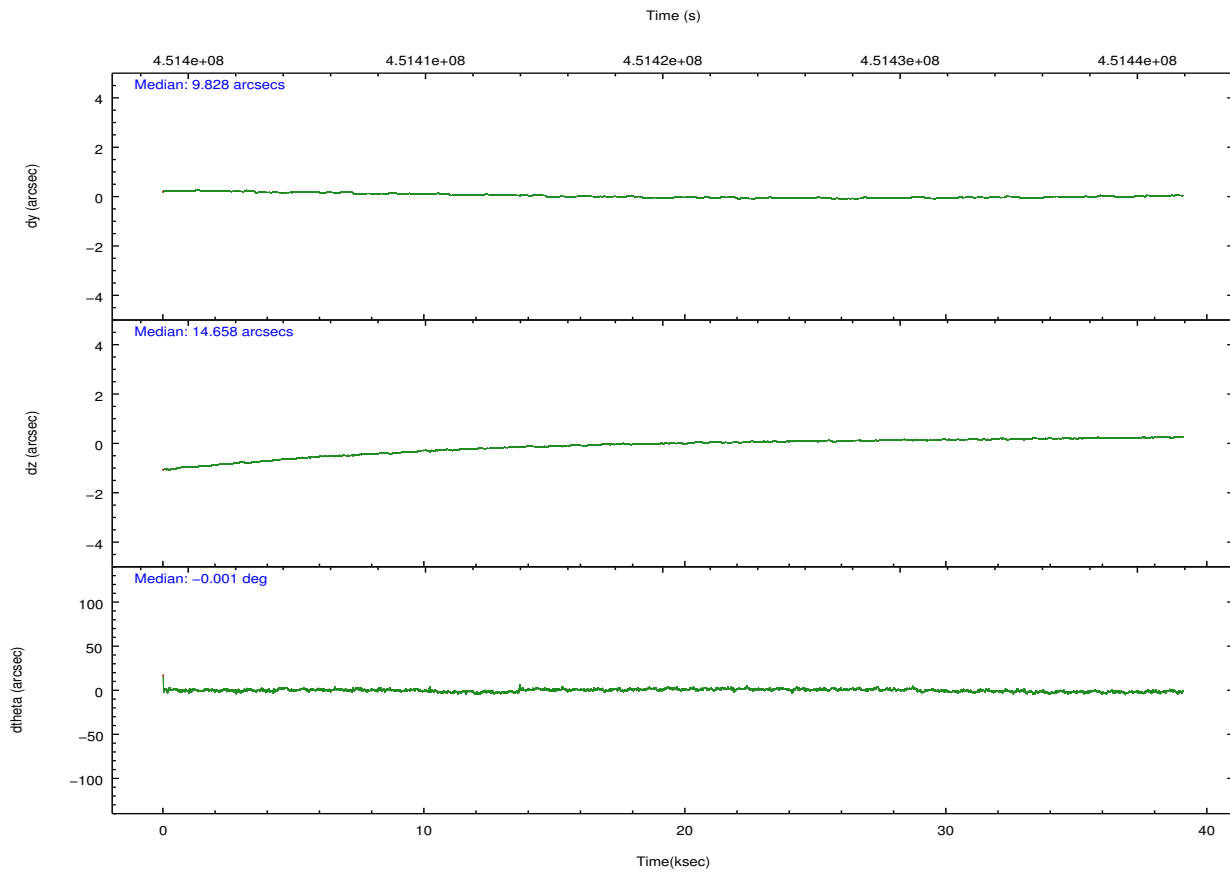
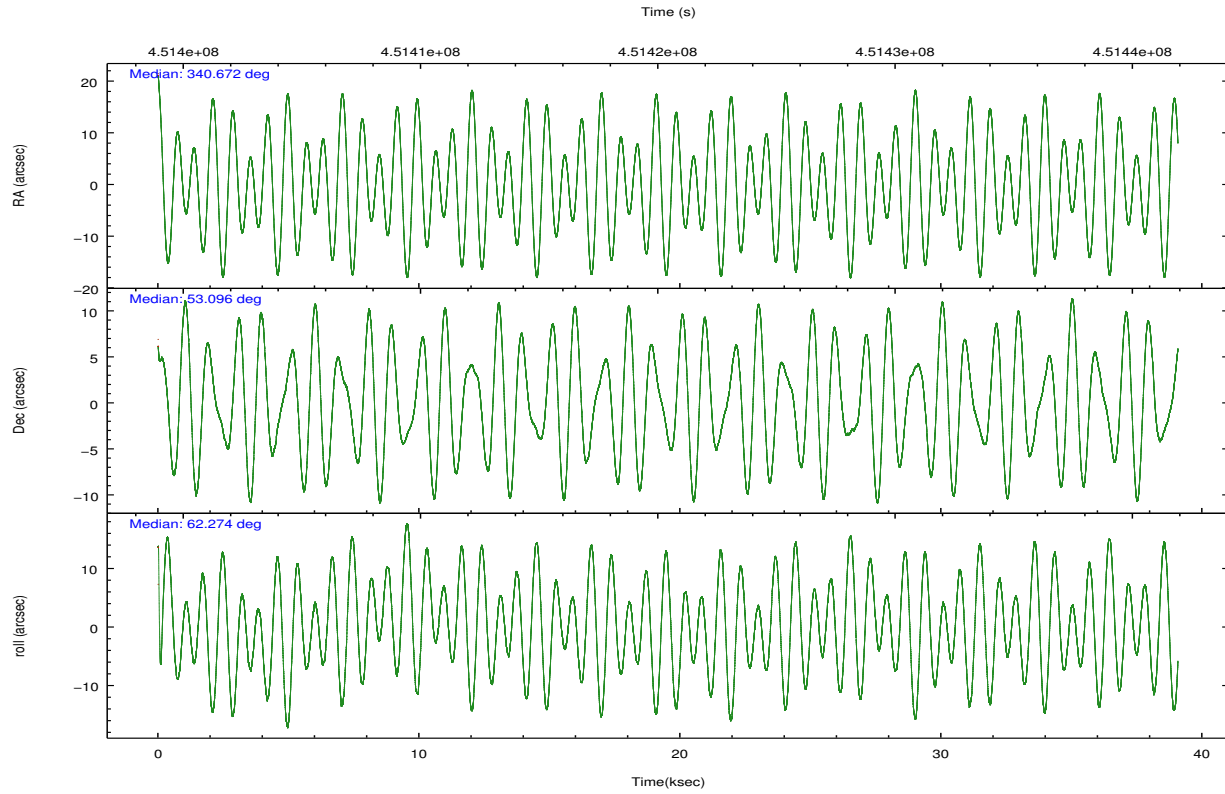
	ccd 0	ccd 1	ccd 2	ccd 3	ccd 6	ccd 7		ccd 0	ccd 1	ccd 2	ccd 3	ccd 6	ccd 7
level 1 events	207638	228270	225755	222934	234555	292263	grade 0 events	11421	23707	10780	13104	9248	11714
rejected events	179008	182108	198330	192771	207557	161781		5%	10%	4%	5%	3%	4%
rejected %	86%	79%	87%	86%	88%	55%	grade 1 events	121	149	139	186	123	333
								0%	0%	0%	0%	0%	0%
							grade 2 events	6714	9028	6360	6141	6117	26743
								3%	3%	2%	2%	2%	9%
							grade 3 events	2770	3437	2630	2785	2798	11461
								1%	1%	1%	1%	1%	3%
							grade 4 events	2540	3412	2734	2836	2742	11423
								1%	1%	1%	1%	1%	3%
							grade 5 events	9691	10678	9520	11136	11478	30760
								4%	4%	4%	4%	4%	10%
							grade 6 events	5187	6586	4921	5300	6094	69154
								2%	2%	2%	2%	2%	23%
							grade 7 events	169194	171273	188671	181446	195955	130675
								81%	75%	83%	81%	83%	44%

2.2 Compared Parameters

Parameter	Planned	Actual	Parameter	Planned	Actual
Instrument	ACIS	ACIS	Obspar format version number	7	7
Detector	ACIS-012367	ACIS-012367	Obspar file type	PREDICTED	ACTUAL
Grating	NONE	NONE	Obspar update status	NONE	UPDATED
Data mode	FAINT	FAINT	CCD I0 on	Y	Y
Observation mode	POINTING	POINTING	CCD I1 on	Y	Y
[deg] Pointing RA	340.673463	340.6714720057864	CCD I2 on	Y	Y
[deg] Pointing Dec	53.068345	53.09582596160163	CCD I3 on	Y	Y
[deg] Pointing Roll	62.070064	62.28035007608111	CCD S0 on	N	N
[mm] SIM focus pos	-0.782348	-0.7809083437167272	CCD S1 on	N	N
[mm] SIM defocus	0	0.001439871863259334	CCD S2 on	O2	Y
[mm] SIM translation stage pos	-233.592463	-233.5874344608287	CCD S3 on	O1	Y
[mm] SIM translation stage offset	0	-0.005018542100998502	CCD S4 on	N	N
[s] Observation start time (MET)	451401980.184000	451400578.8062	CCD S5 on	N	N
Observation start date	2012-04-21T13:25:14	2012-04-21T13:02:58	Number of optional ACIS chips dropped	0	0
[s] Observation end time (MET)	451439980.184000	451440939.72084	On-chip summing requested	N	N
Observation end date	2012-04-21T23:58:34	2012-04-22T00:15:39	Subarray requested	NONE	NONE
Read mode	TIMED	TIMED	Alternating exposures requested	N	N
			[s] Primary exposure time	0.000000	3.2

2.3 Aspect



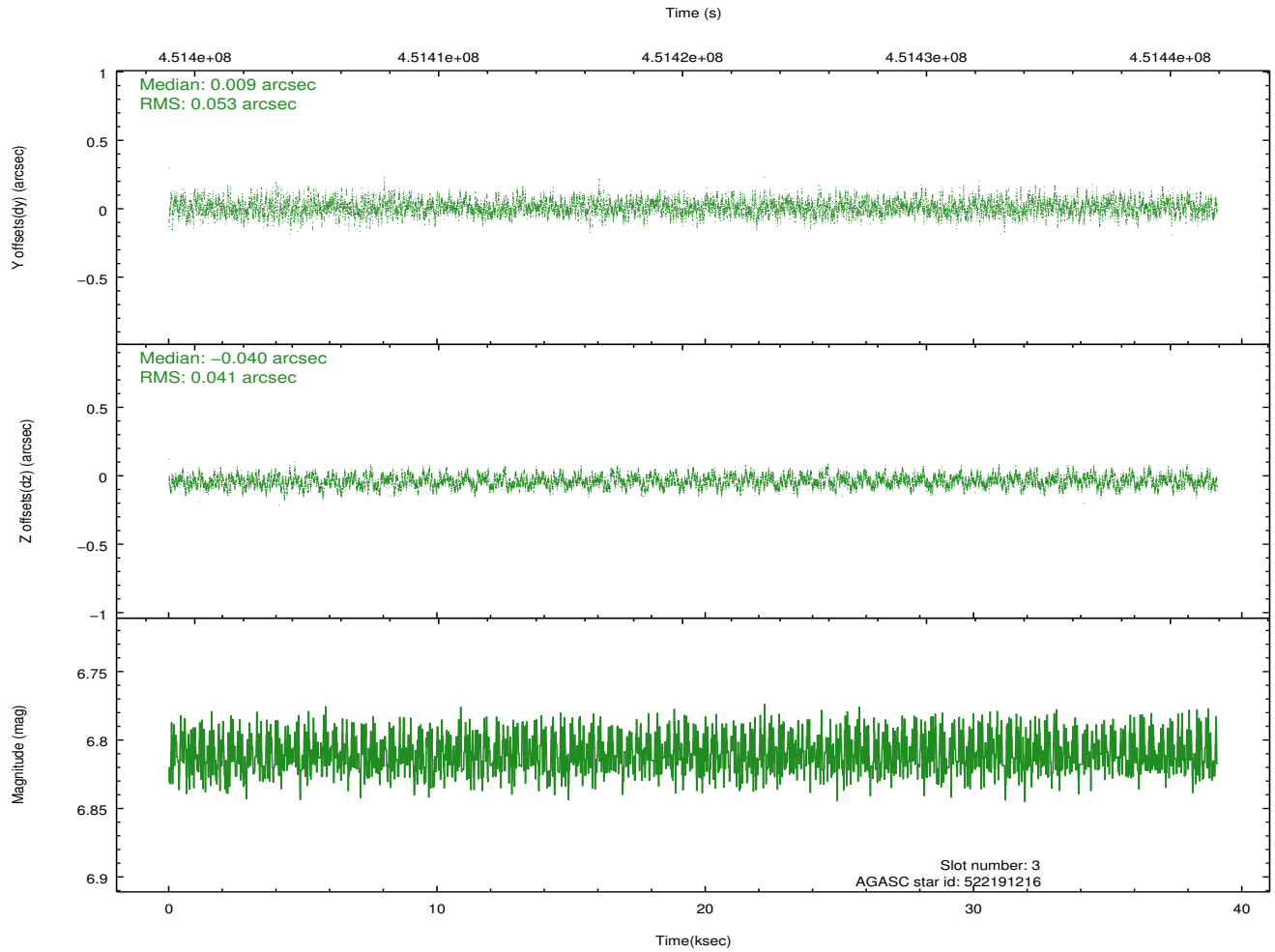
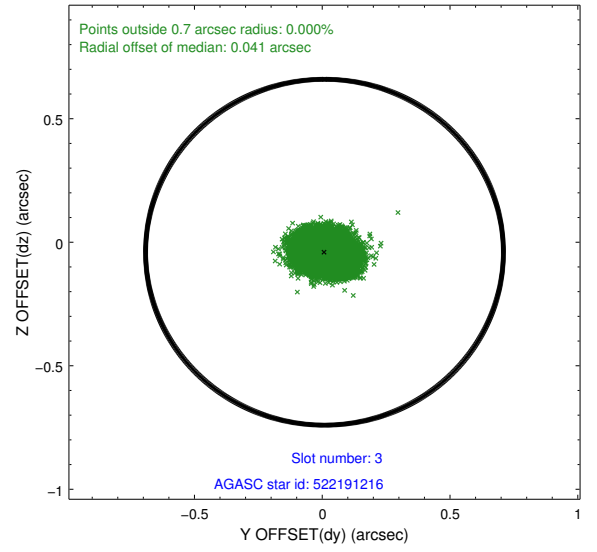
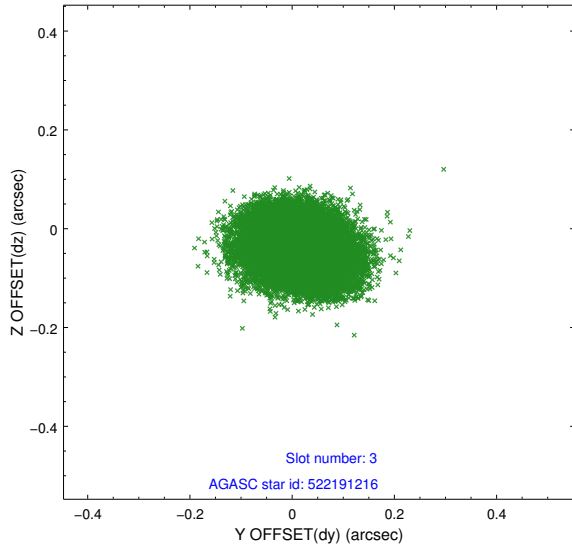


Slot Statistics

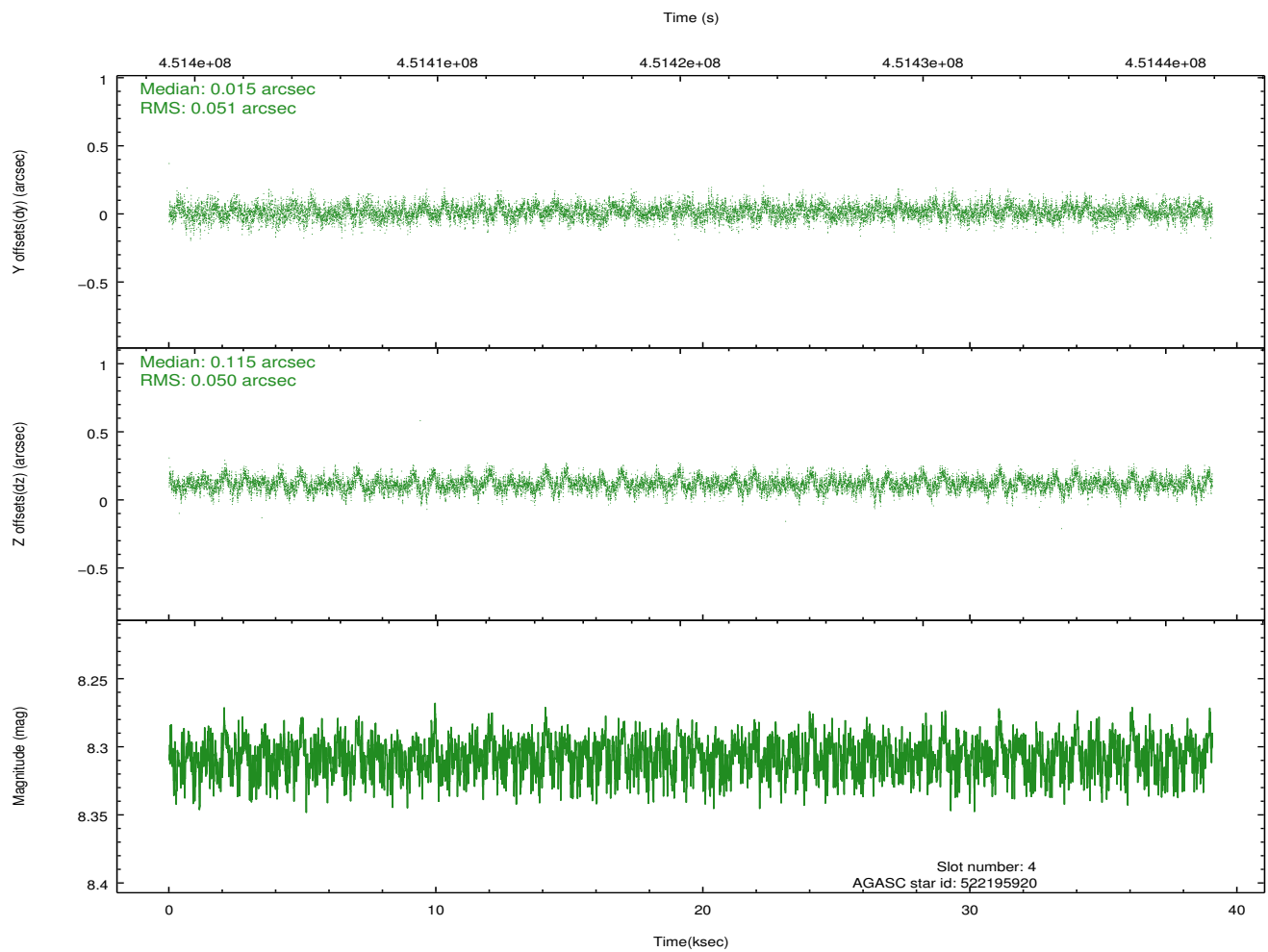
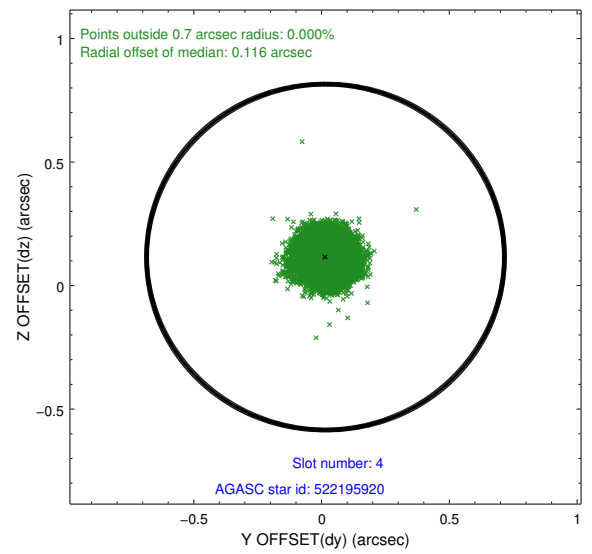
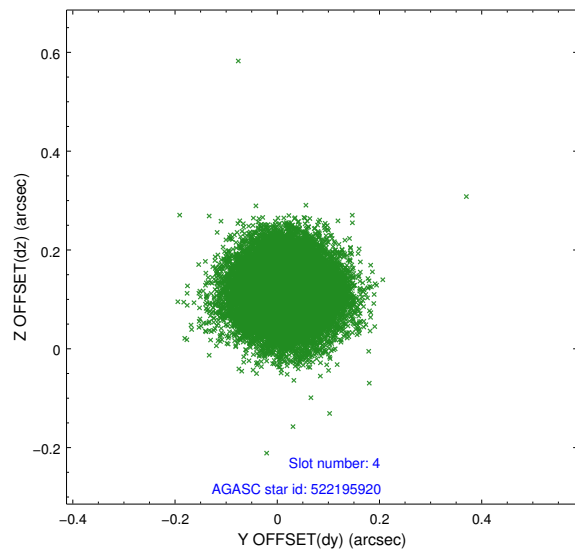
slot	status	id	mag	n_pts	med_dy	med_dz	dr1	dr2	ra	dec	mean_y	mean_z
0	FID	ACIS-I-1	7.06	9531	-0.000	0.090	0.014	0.023	0.000000	0.000000	929.73	-838.04
1	FID	ACIS-I-2	6.96	9530	-0.174	-0.080	0.011	0.020	0.000000	0.000000	-764.52	-844.64
2	FID	ACIS-I-4	6.99	9530	0.077	0.058	0.014	0.022	0.000000	0.000000	2149.70	1061.71
3	GUIDE	522191216	6.81	19060	0.009	-0.040	0.072	0.115	341.400345	52.890306	180.56	-1691.36
4	GUIDE	522195920	8.31	19056	0.015	0.115	0.077	0.122	340.534111	52.561582	-1754.16	-584.88
5	GUIDE	522197712	8.38	19055	0.148	-0.079	0.074	0.117	341.160967	52.624062	-910.49	-1688.74
6	GUIDE	522204136	7.19	19060	-0.161	0.076	0.065	0.106	341.384669	53.374616	1696.38	-829.13
7	GUIDE	522200440	8.90	19050	-0.013	-0.075	0.077	0.126	340.183364	53.917345	2216.76	2350.90

2.4 Star Slots

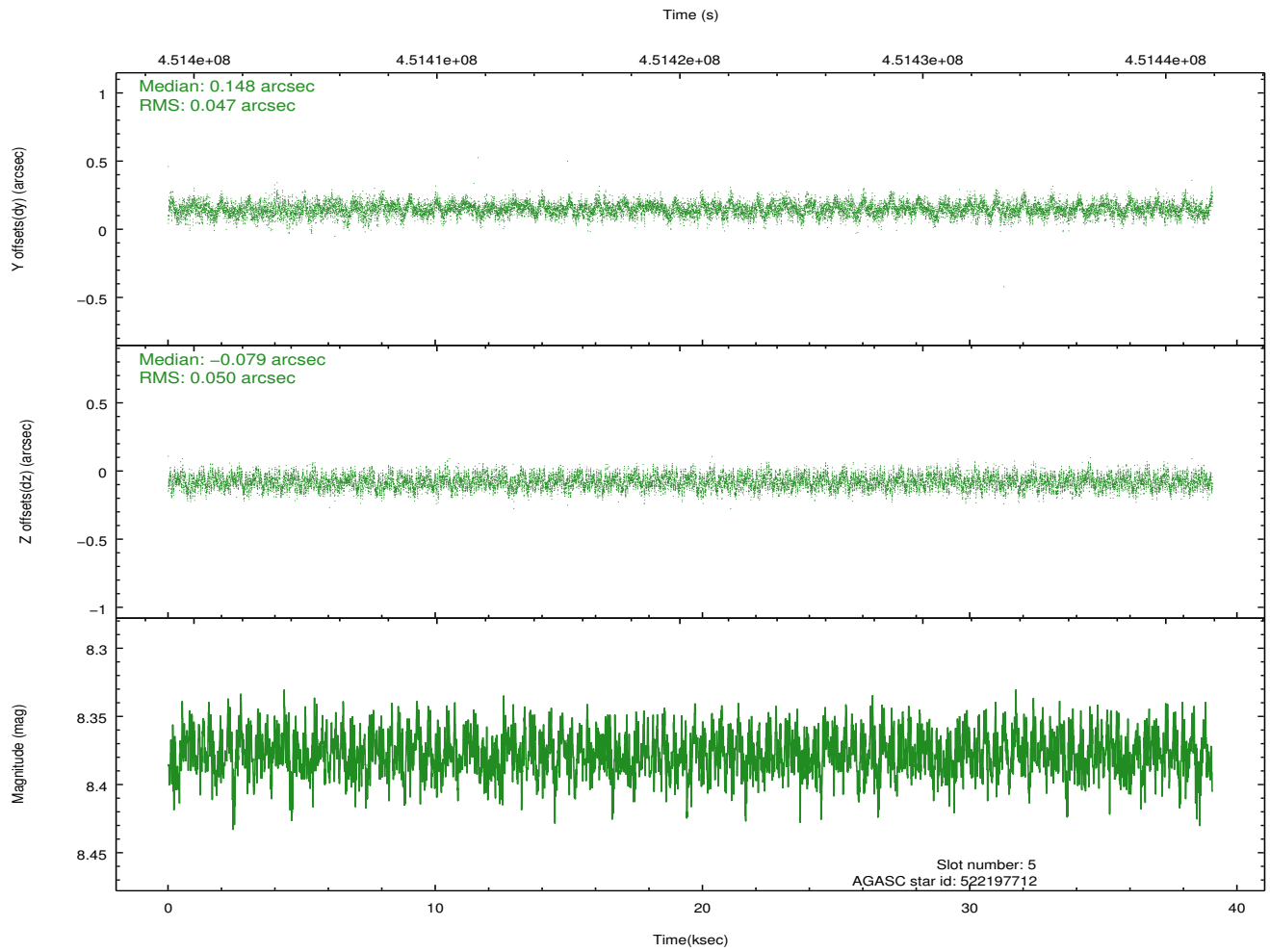
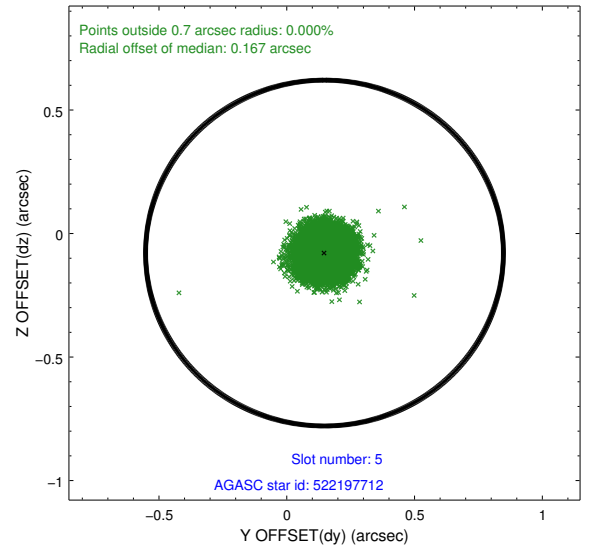
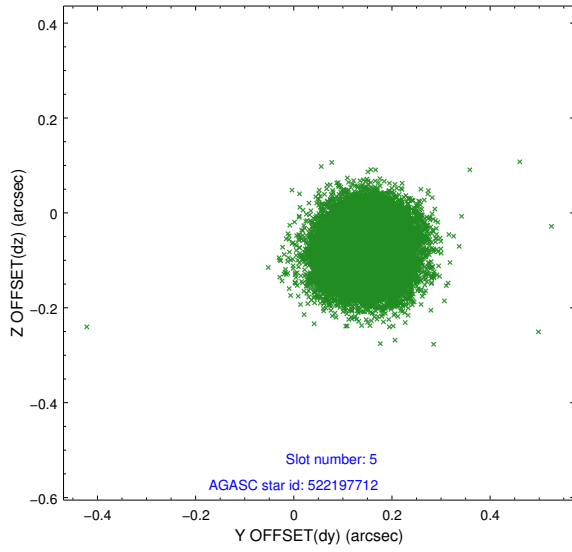
2.4.1 Slot 3



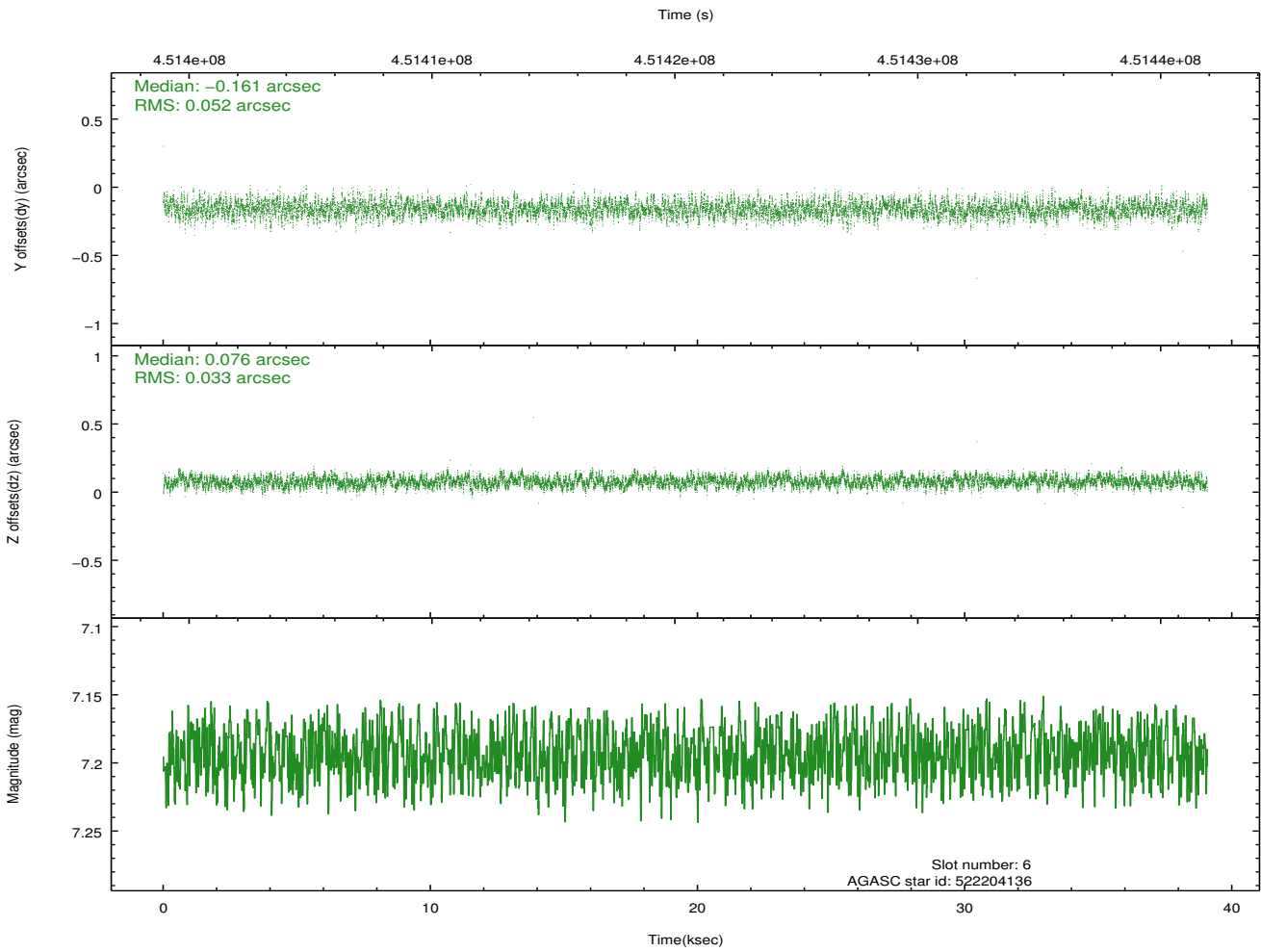
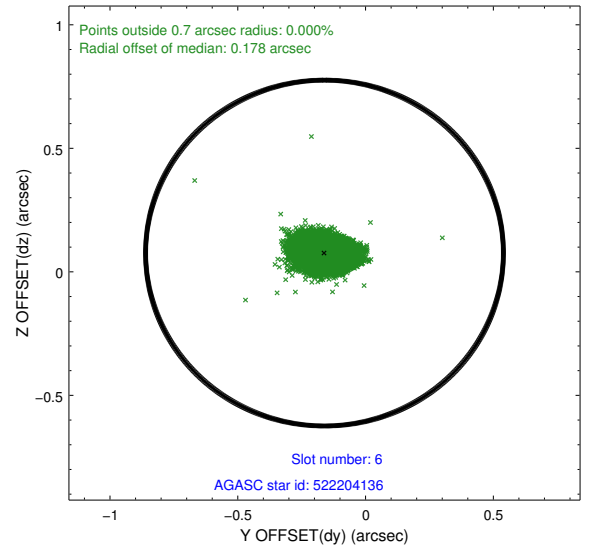
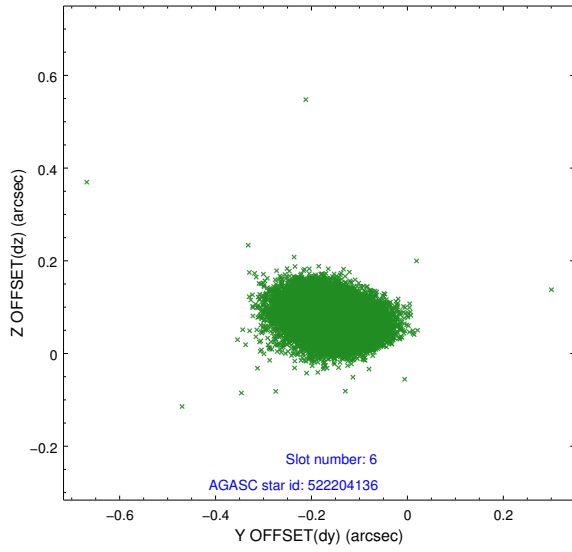
2.4.2 Slot 4



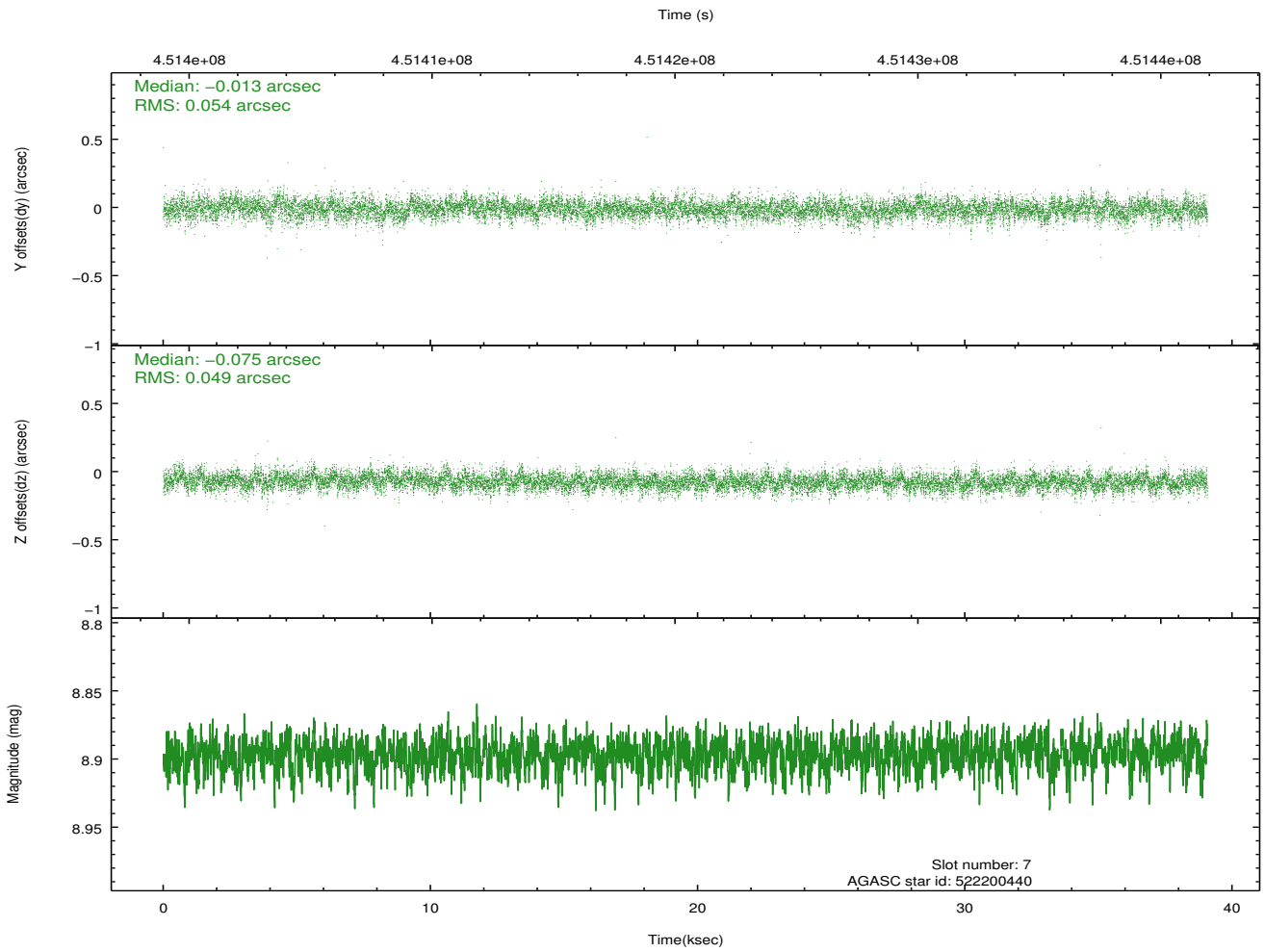
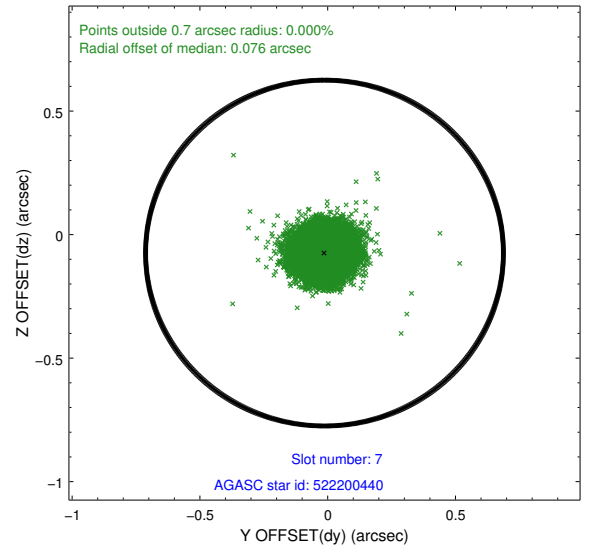
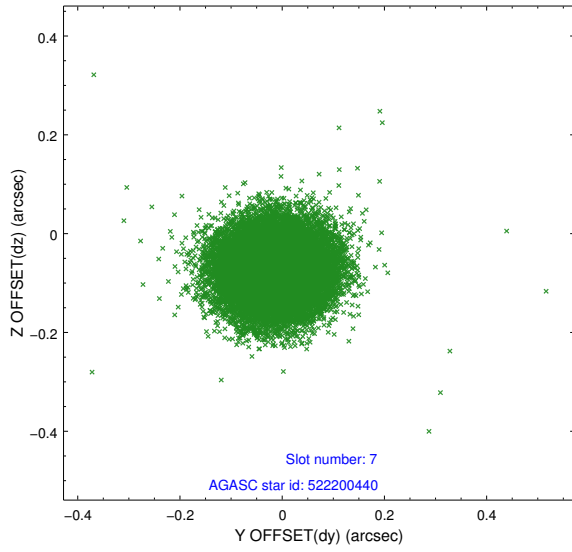
2.4.3 Slot 5



2.4.4 Slot 6

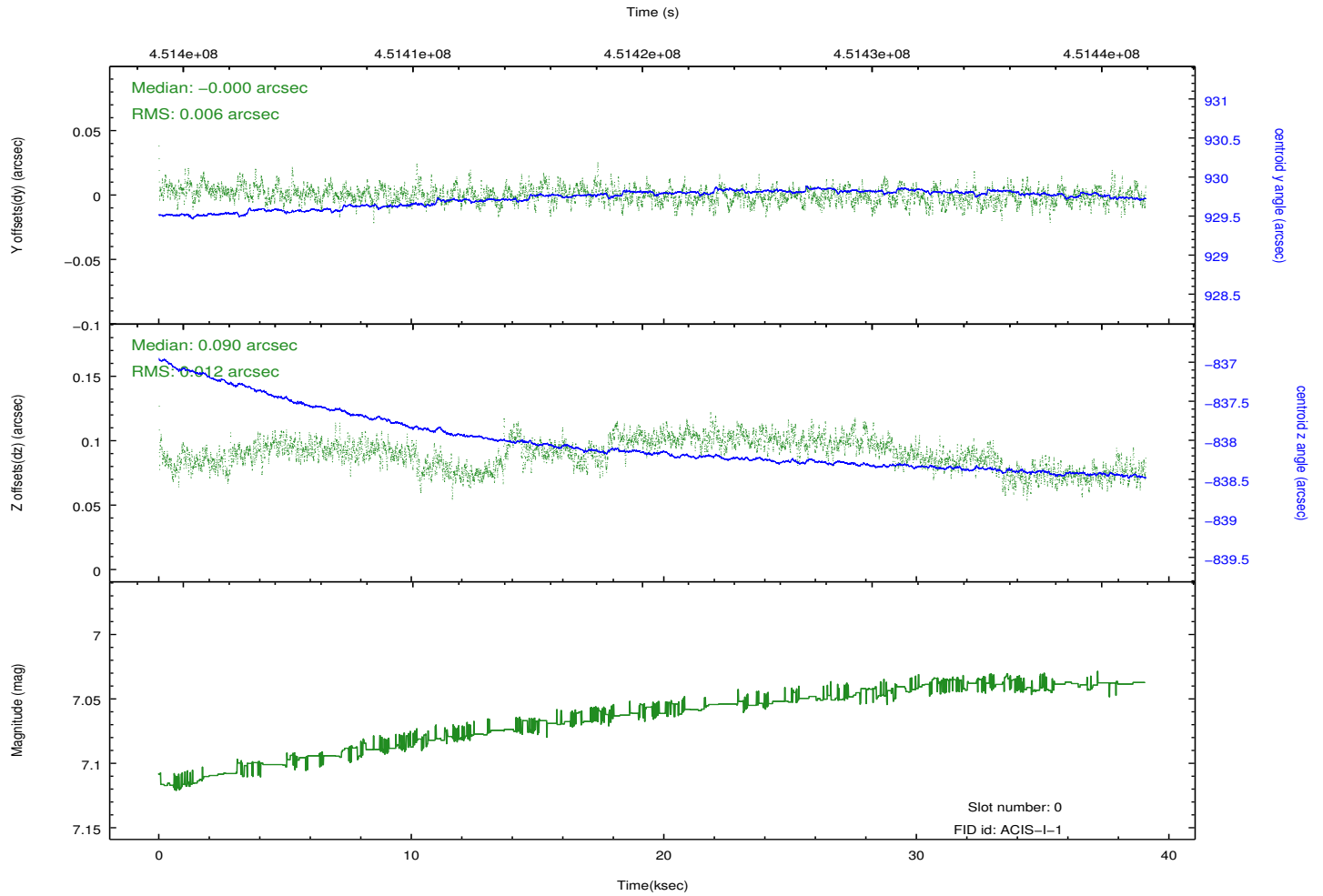
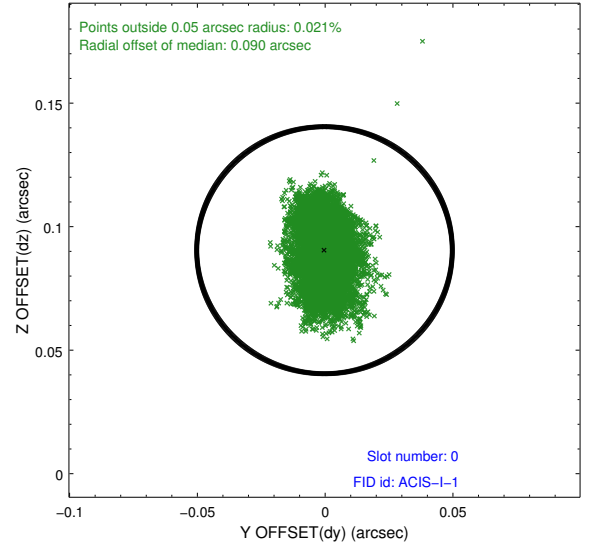
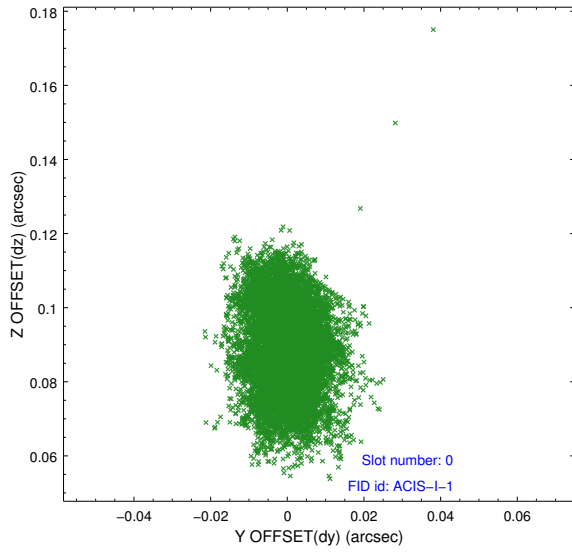


2.4.5 Slot 7

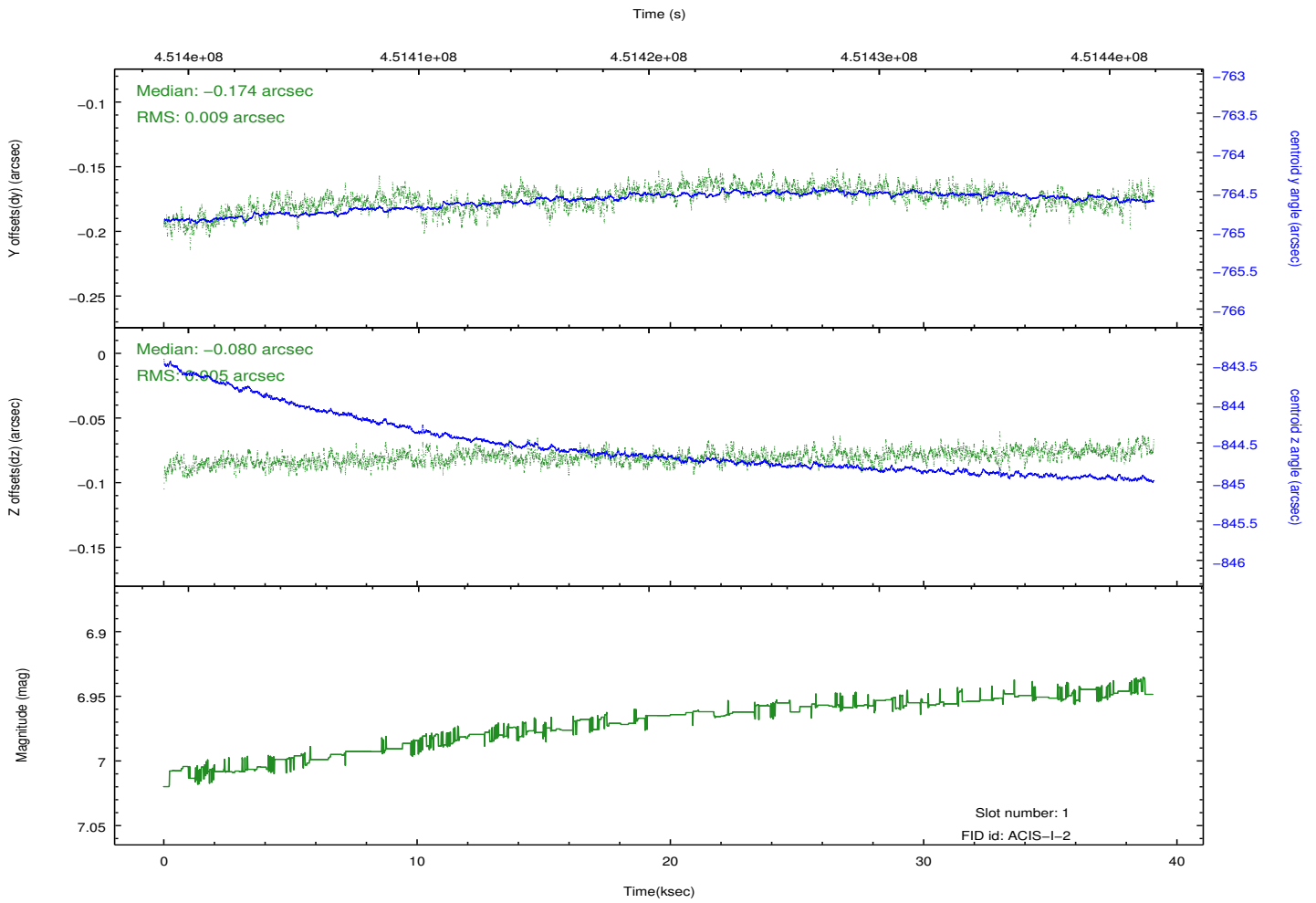
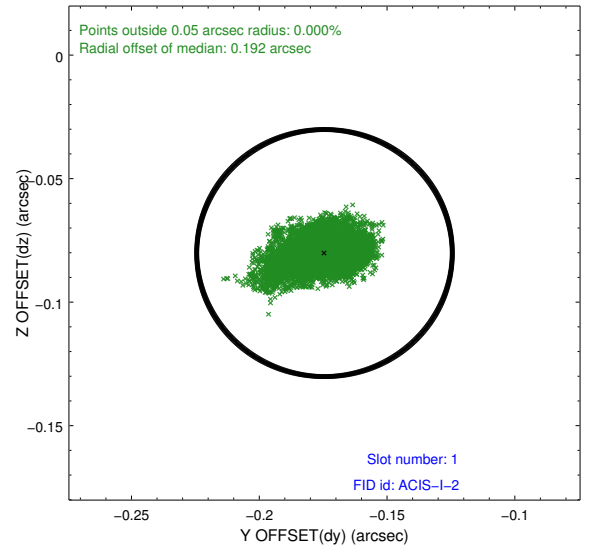
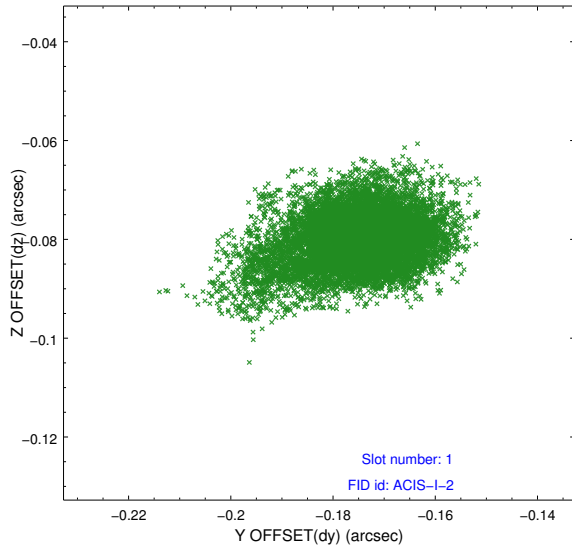


2.5 FID Slots

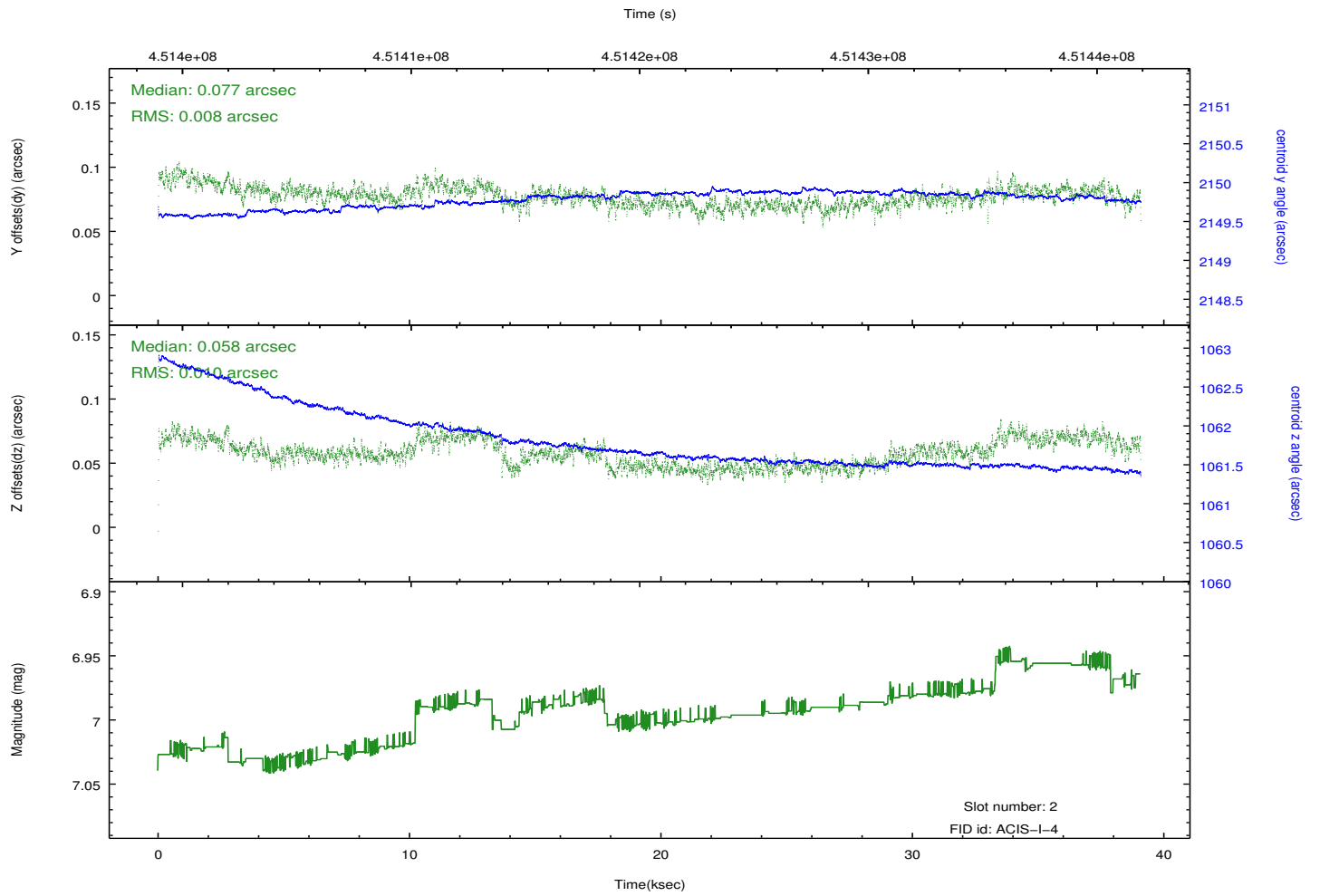
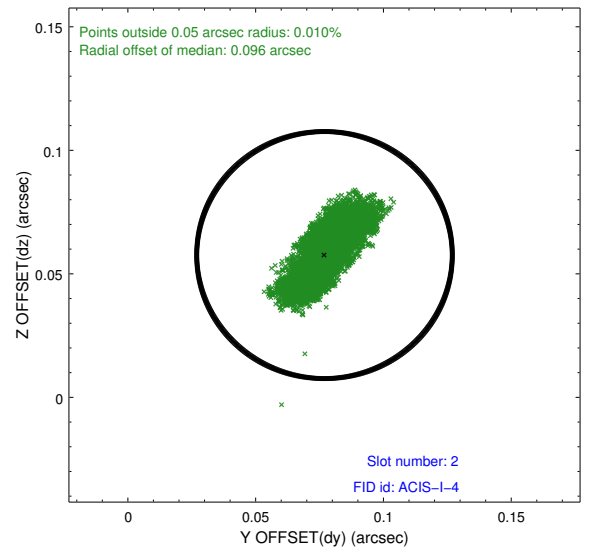
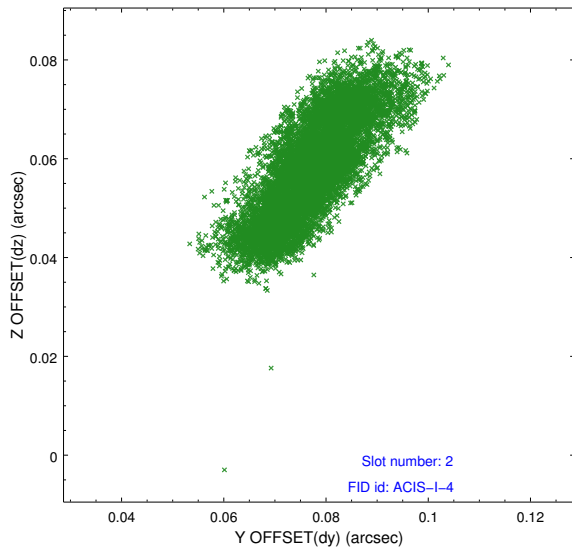
2.5.1 Slot 0



2.5.2 Slot 1



2.5.3 Slot 2



A Summary

A.1 Status

V&V Scientist	Beth Sundheim
V&V Date (YYYY-MM-DD)	2012.04.22
V&V Edition	1
V&V Disposition and Status	OK
V&V Charge Time	37.967898656905

A.2 Comments