

V&V Reference Report

L2 ASCDS Version : 8.1.1

Observation 1420 - L2 Version 4
Chandra X-Ray Center

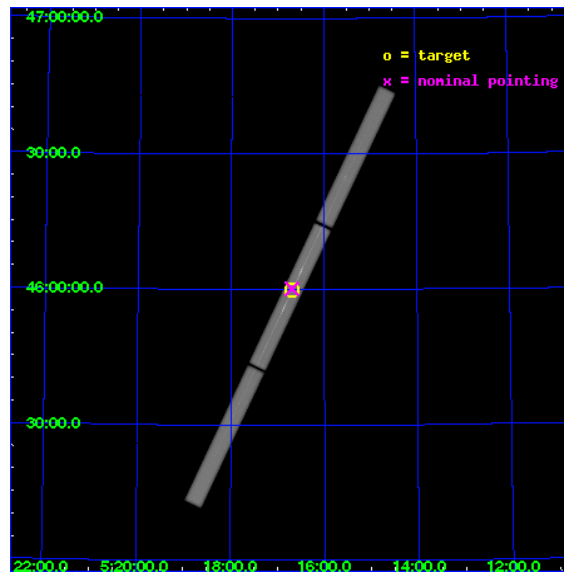
L2 Processing Date : Nov 20 2009

Contents

1	Front	2
2	OBI	3
2.1	OBI	3
2.1.1	Images	3
2.1.2	Parameters	4
2.1.3	Events	4
2.2	Compared Parameters	5
2.3	Aspect	6
2.4	Star Slots	9
2.4.1	Slot 3	9
2.4.2	Slot 4	10
2.4.3	Slot 5	11
2.4.4	Slot 6	12
2.4.5	Slot 7	13
2.5	FID Slots	14
2.5.1	Slot 0	14
2.5.2	Slot 1	15
2.5.3	Slot 2	16
3	Gratings	17
3.1	LETG Arm	17
A	Summary	19
A.1	Status	19
A.2	Comments	19

1 Front

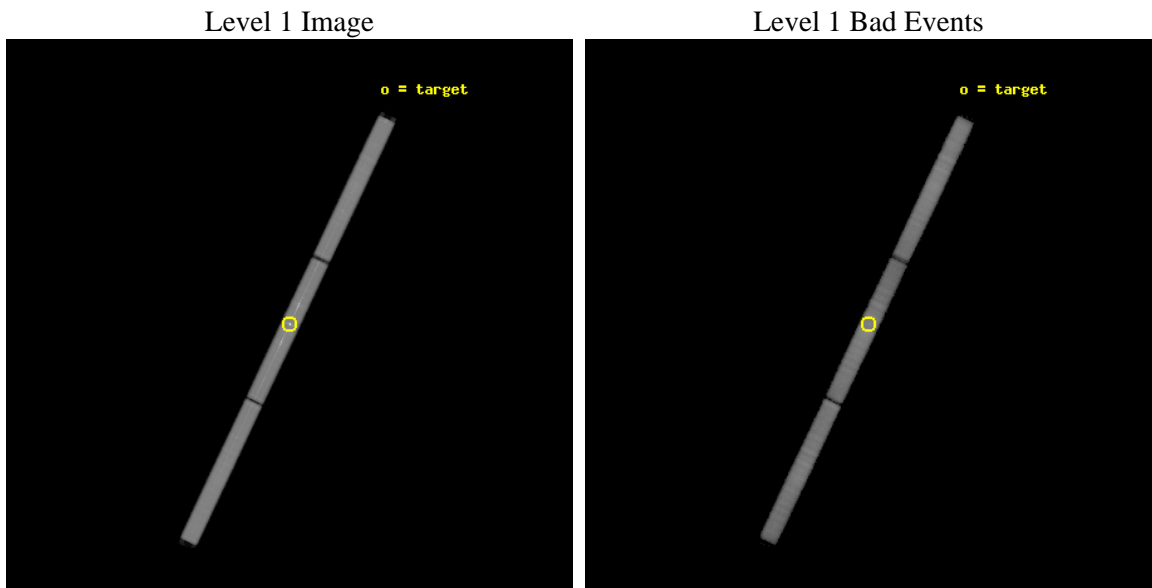
seq_num	280370	Sequence number
obs_id	1420	Observation id
title	 	Proposal title
observer	Dr. CXC Calibration	Principal investigator
object	CAPELLA	Source name
ra_targ	79.17625	Observer's specified target RA
dec_targ	45.997889	Observer's specified target Dec
ra_nom	79.173668388206	Nominal RA
dec_nom	46.002833667789	Nominal Dec
roll_nom	115.36142979407	Nominal Roll
revision	4	Processing version of data
ontime	30196.501089595	[s]
livetime	29960.832925118	Ontime multiplied by DTCOR
l2events	1716949	Number of level 2 events



2 OBI

2.1 OBI

2.1.1 Images



2.1.2 Parameters

obi_num	0	Obi number	sched_exp_time	30000.000000	Scheduled observation exposure time
ascdsver	8.1.1	Processing system revision	ontime	30196.501089595	[s]
caldbver	4.1.4	 	ll events	2631003	Number of level 1 events
date	2009-11-20T20:20:16	Date and time of file creation			
revision	4	Processing version of data			

2.1.3 Events

Level 1 Events

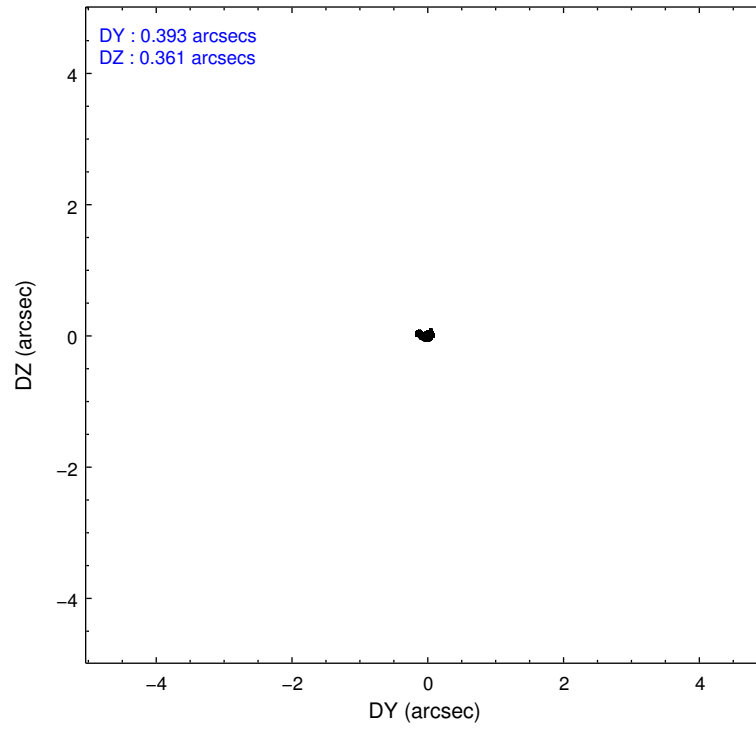
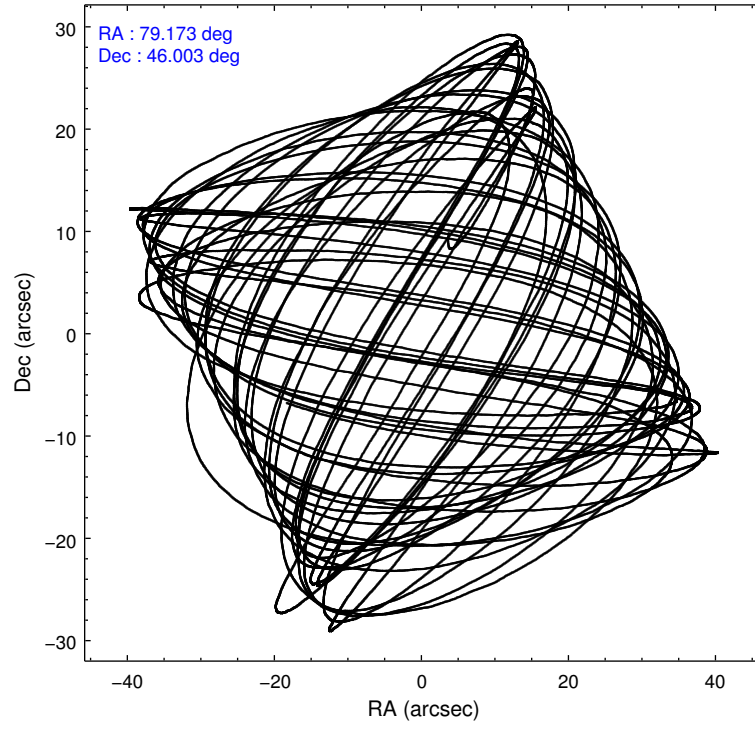
	segment 1	segment 2	segment 3
level 1 events	845784	941684	843535
rejected events	211707	223530	259468
rejected %	25%	23%	30%

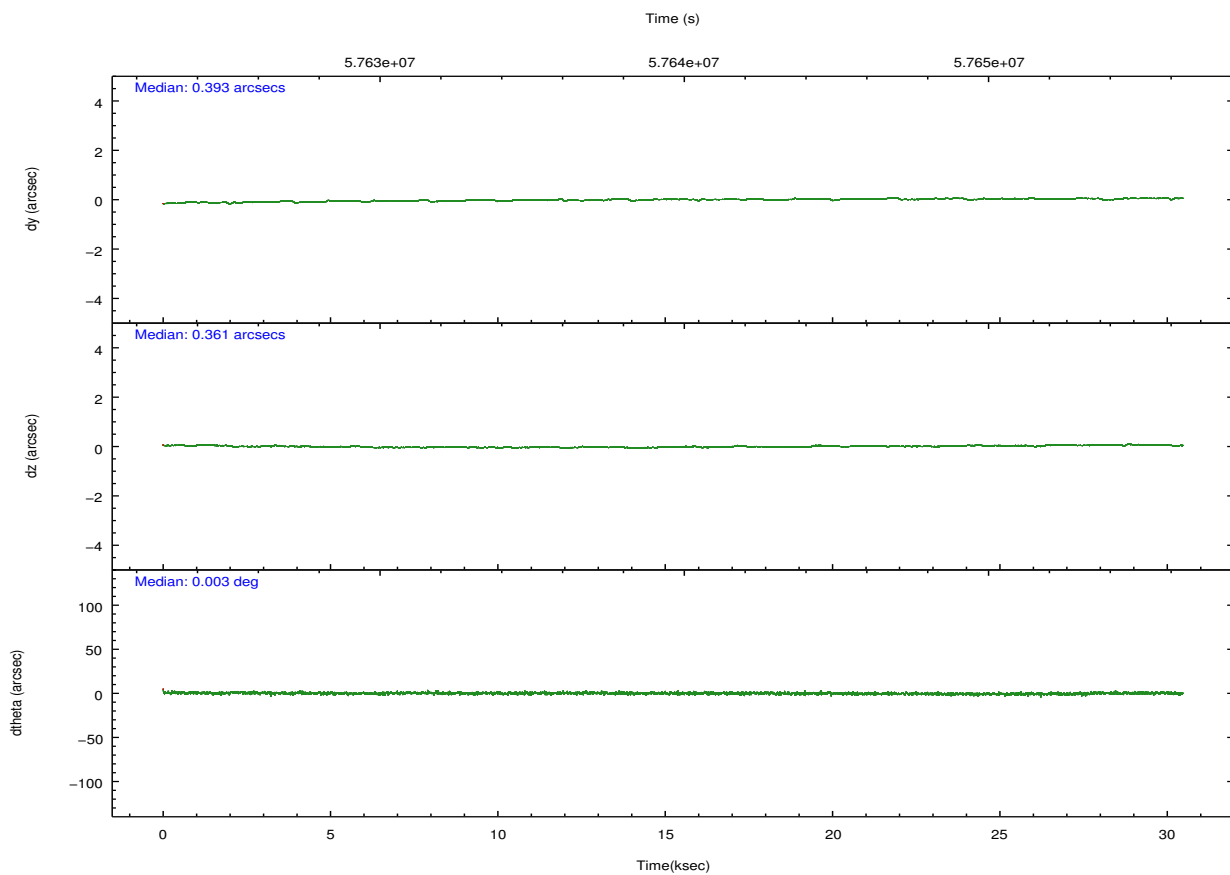
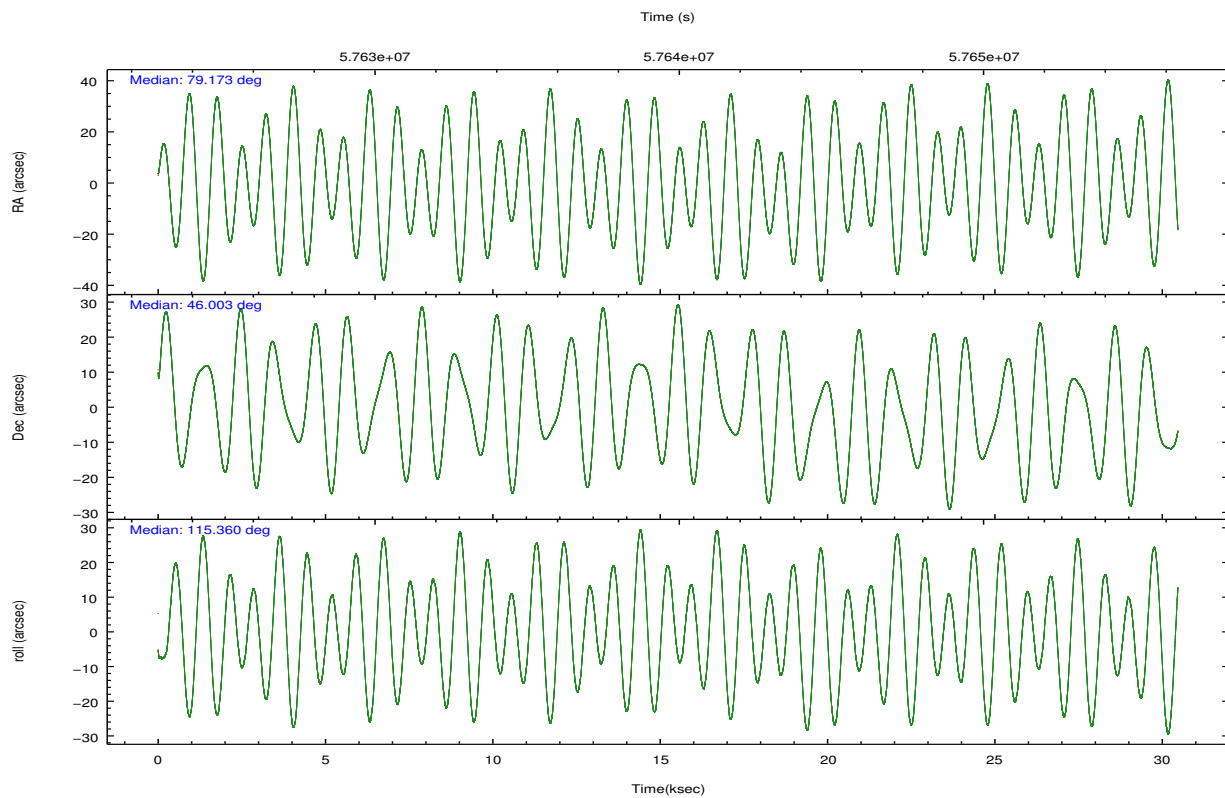
2.2 Compared Parameters

Parameter	Planned	Actual
Instrument	HRC	HRC
Detector	HRC-S	HRC-S
Grating	LETG	LETG
Data mode	OBSERVING	OBSERVING
Observation mode	POINTING	POINTING
Pointing RA	79.208517	79.17366838820578
Pointing Dec	45.987098	46.00283366778921
Pointing Roll	115.269026	115.3614297940711
SIM focus pos (mm)	-1.642604	-1.708998865222814
SIM defocus (mm)	-0.1092672289566713	-0.1756622258185172
SIM translation stage pos (mm)	250.455976	250.466033080201
SIM translation stage offset (mm)	0	-0.01005468664627074
Observation start time	57624863.184000	57623487.725844
Observation start date	1999-10-29T22:53:19	1999-10-29T22:31:27
Observation end time	57654863.184000	57655742.939508
Observation end date	1999-10-30T07:13:19	1999-10-30T07:29:02

Parameter	Planned	Actual
Obspar format version number	6	6
Obspar file type	PREDICTED	ACTUAL
Obspar update status	NONE	UPDATED

2.3 Aspect



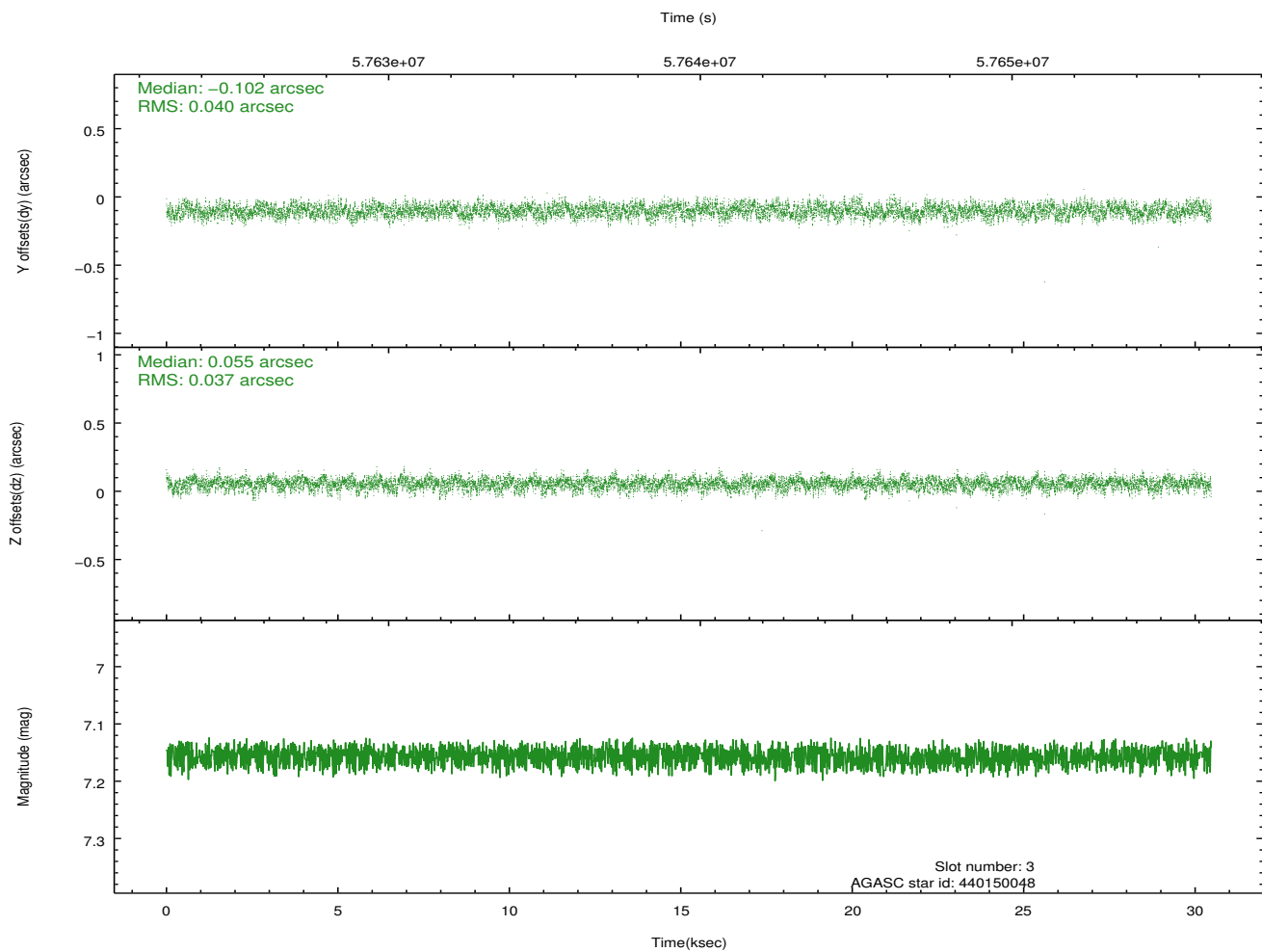
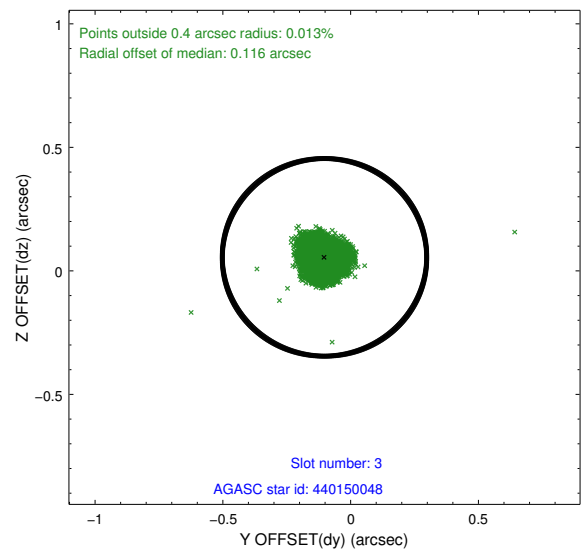
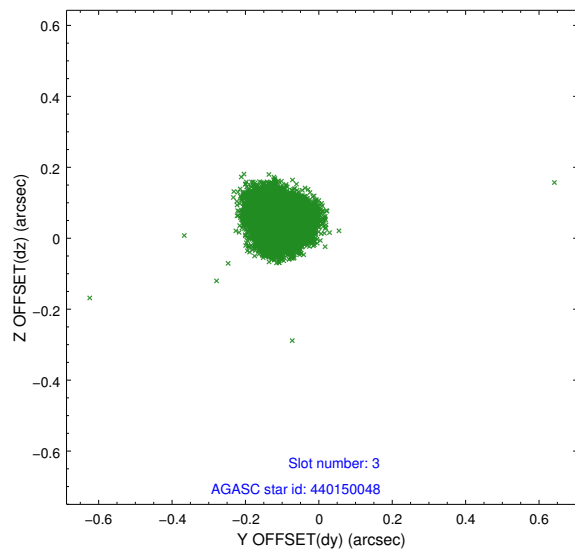


Slot Statistics

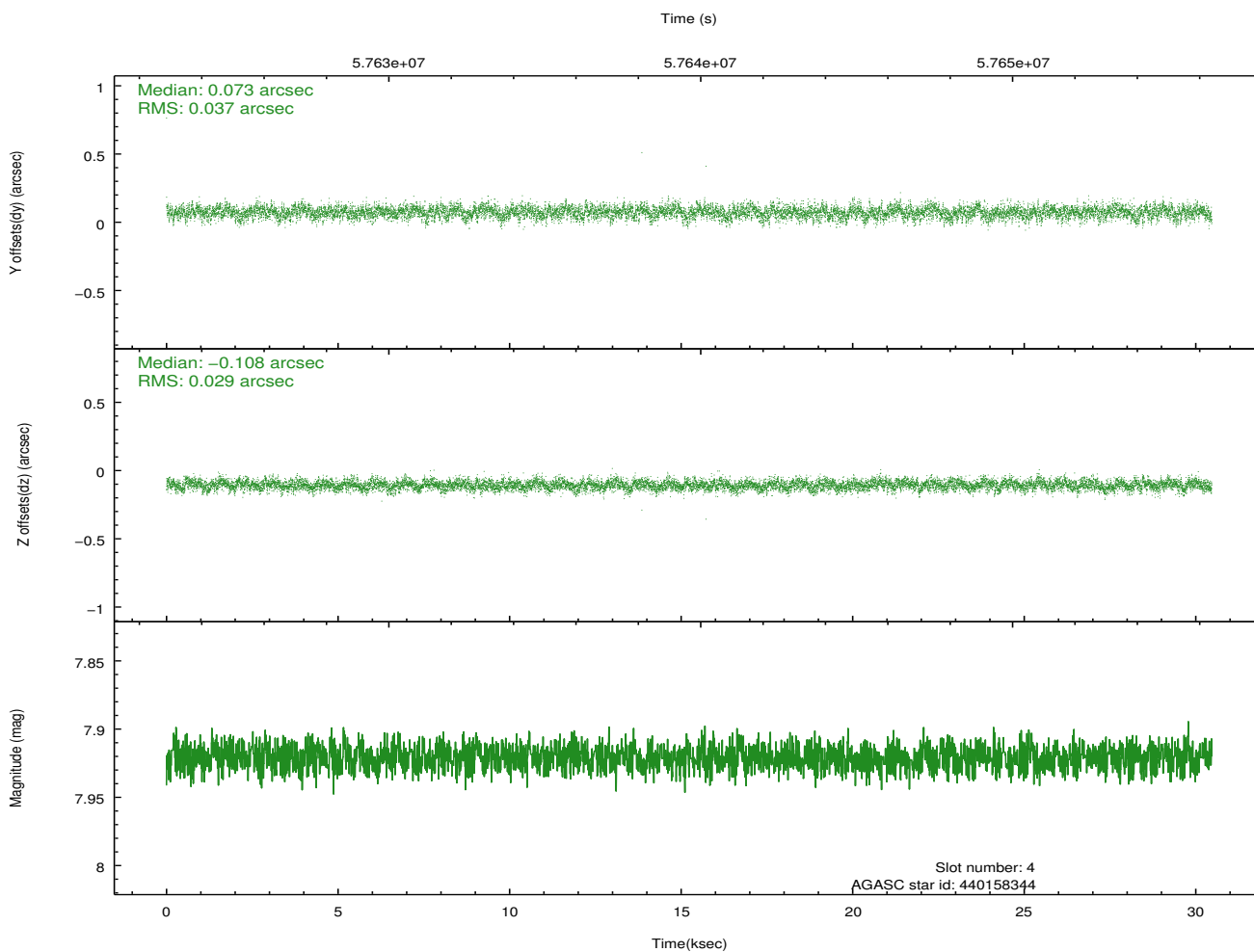
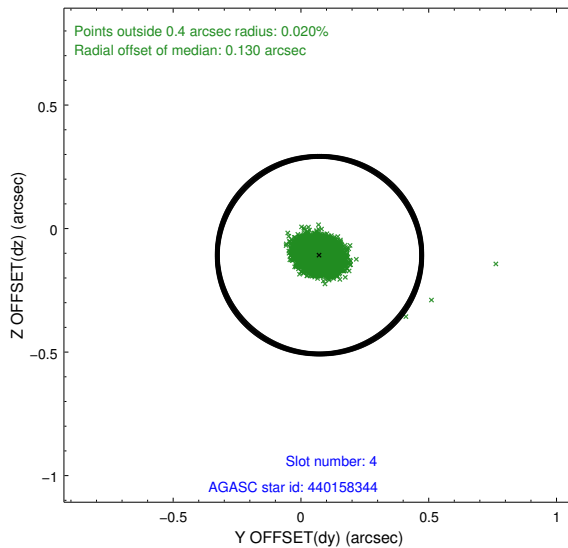
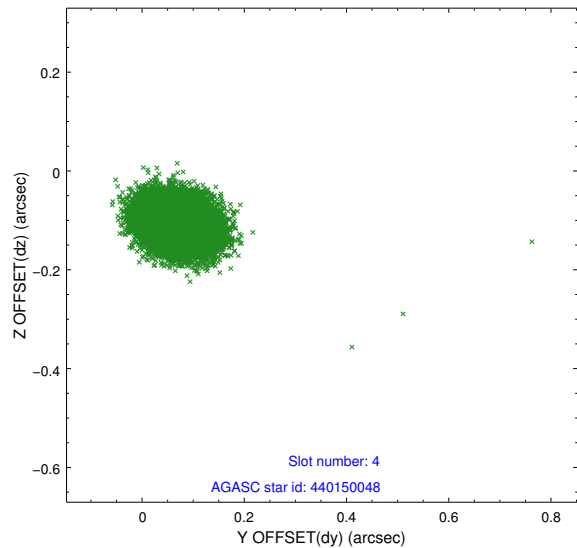
slot	status	id	mag	n_pts	med_dy	med_dz	dr1	dr2	ra	dec	mean_y	mean_z
0	FID	HRC-S-1	6.98	14860	0.155	-0.130	0.006	0.010	0.000000	0.000000	-1154.37	-448.58
1	FID	HRC-S-3	7.00	14862	0.101	-0.056	0.007	0.011	0.000000	0.000000	-1157.11	580.97
2	FID	HRC-S-4	6.97	14862	0.132	-0.111	0.005	0.009	0.000000	0.000000	1243.83	583.29
3	GUIDE	440150048	7.16	14861	-0.102	0.055	0.058	0.091	79.112838	46.416060	1497.57	-445.79
4	GUIDE	440158344	7.92	14863	0.073	-0.108	0.049	0.082	79.344888	45.394991	-2074.69	596.49
5	GUIDE	440164960	8.29	14860	0.046	0.068	0.054	0.088	79.132526	46.140947	581.44	-66.29
6	GUIDE	438450792	8.82	14855	-0.089	-0.135	0.061	0.099	78.654240	46.382628	1879.22	633.48
7	GUIDE	440145016	9.55	14852	0.072	0.122	0.096	0.156	80.238026	45.801940	-1690.74	-2060.34

2.4 Star Slots

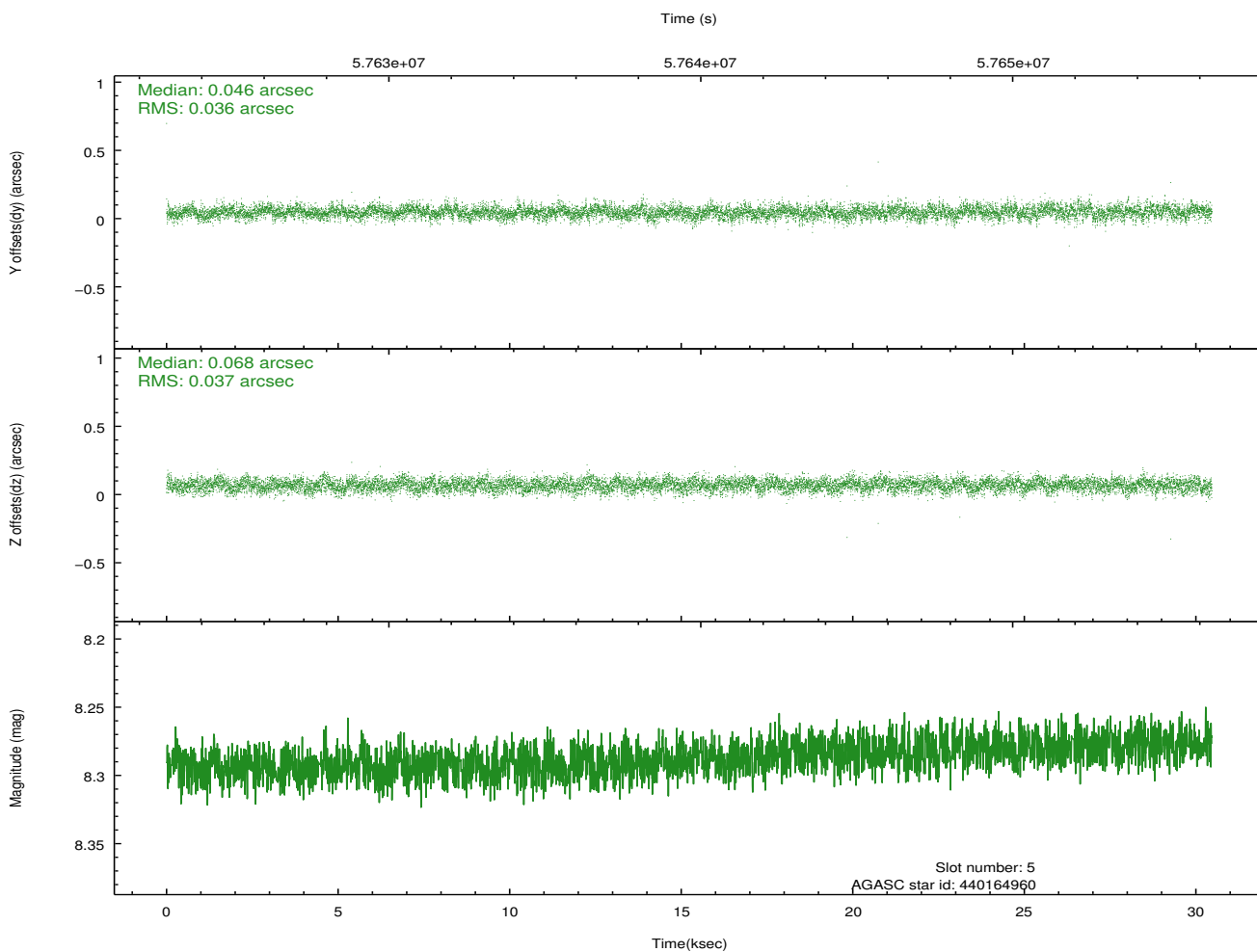
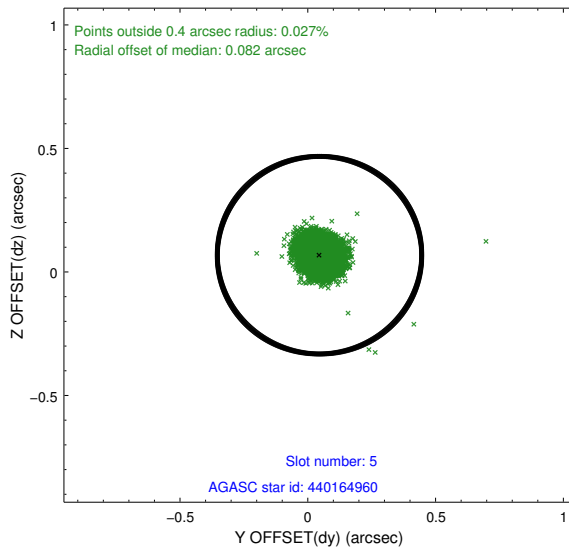
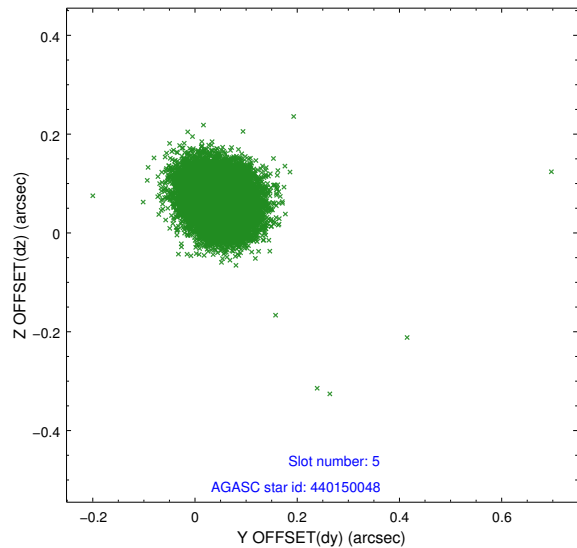
2.4.1 Slot 3



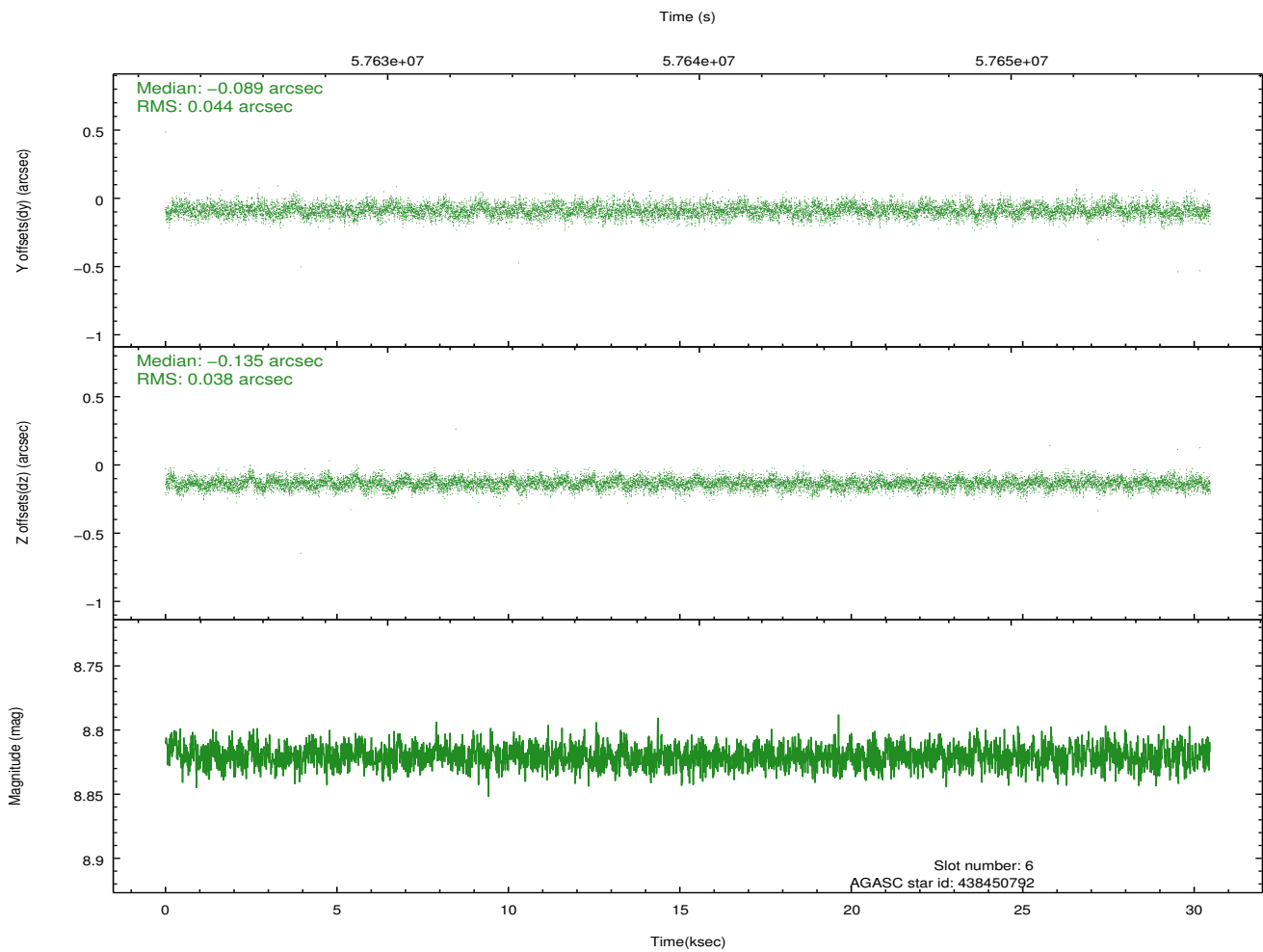
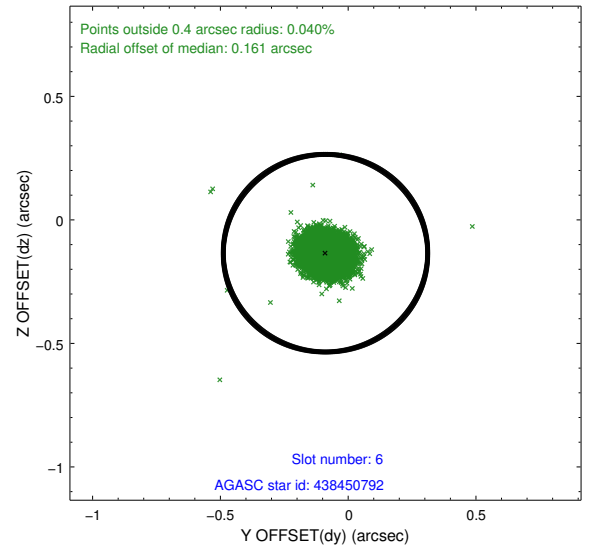
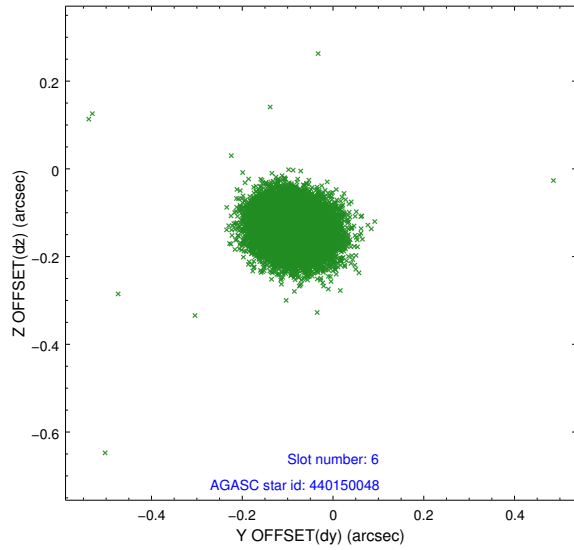
2.4.2 Slot 4



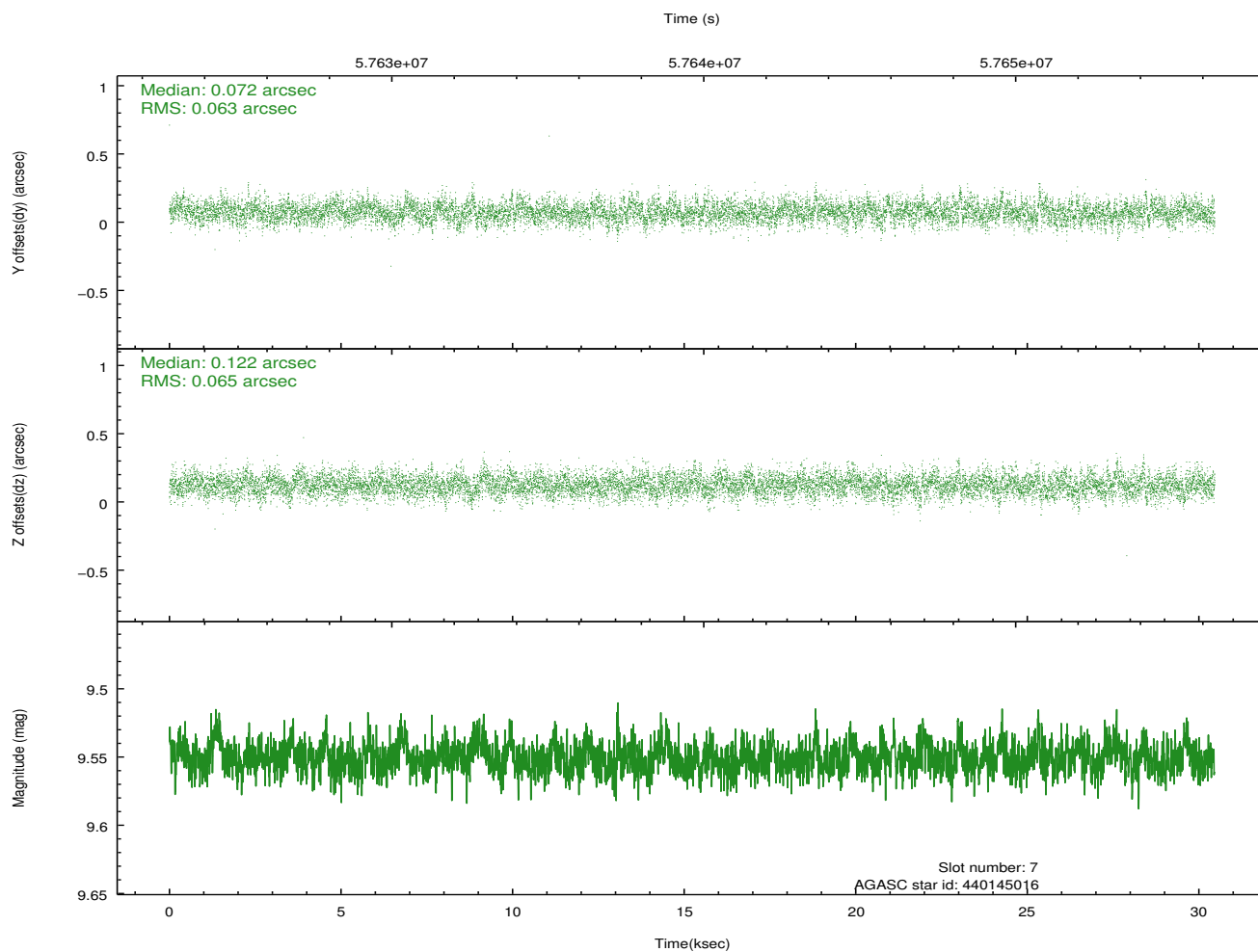
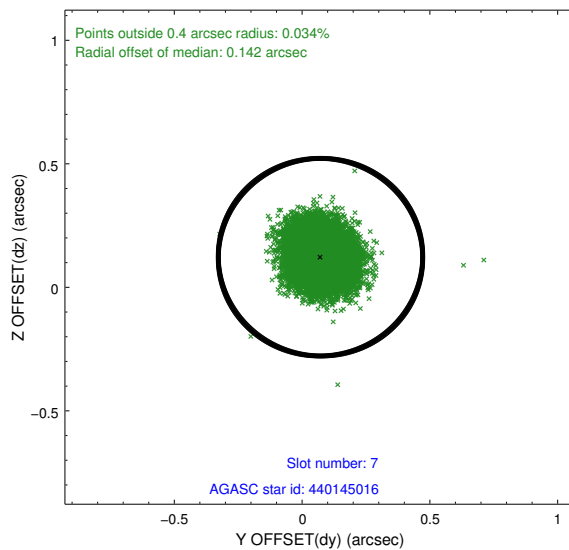
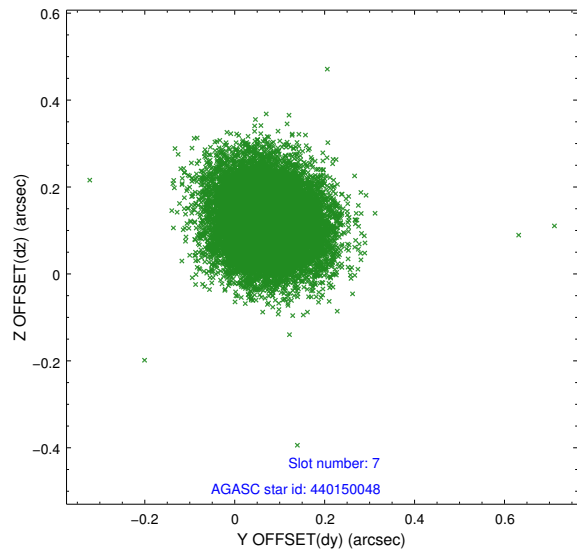
2.4.3 Slot 5



2.4.4 Slot 6

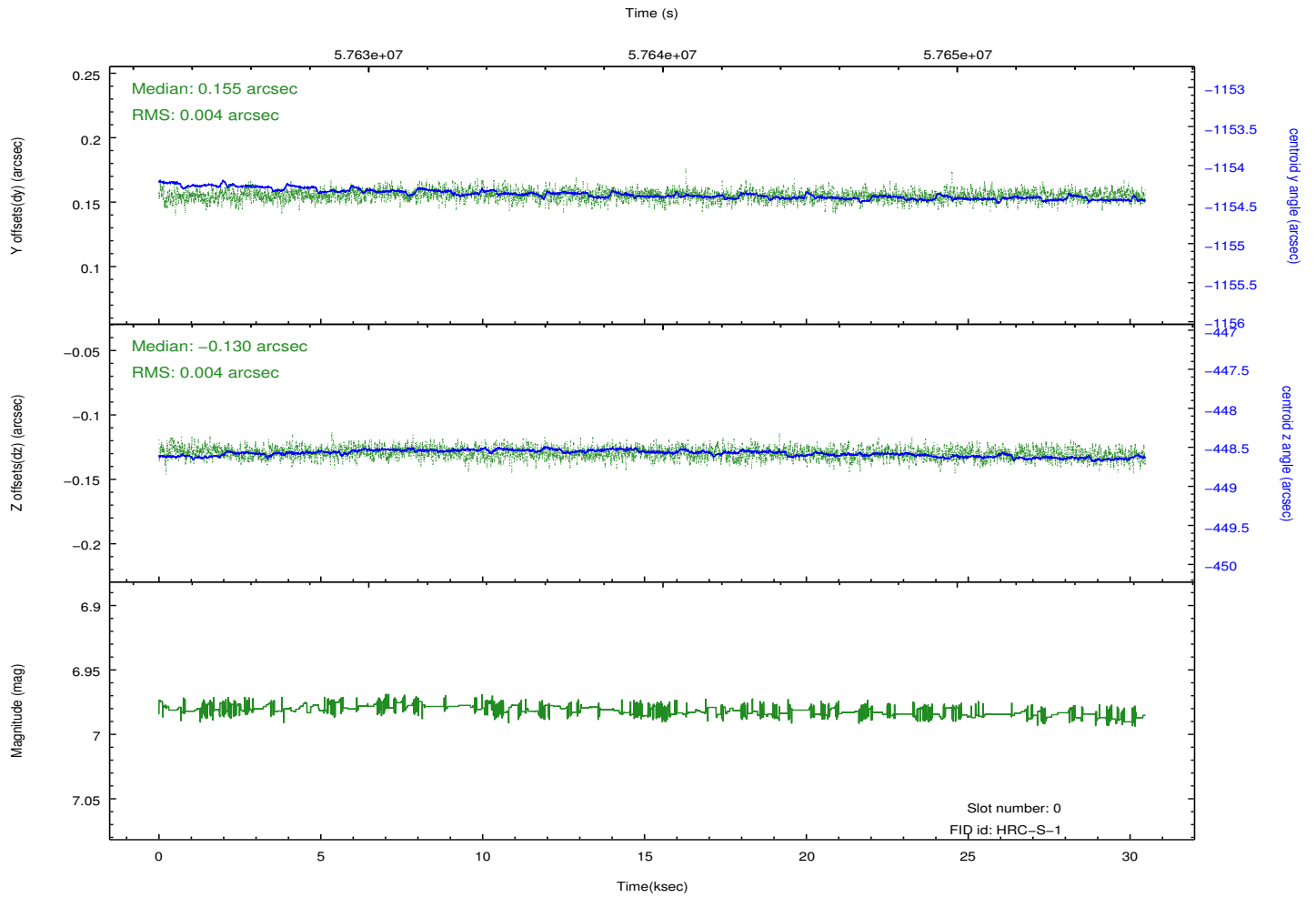
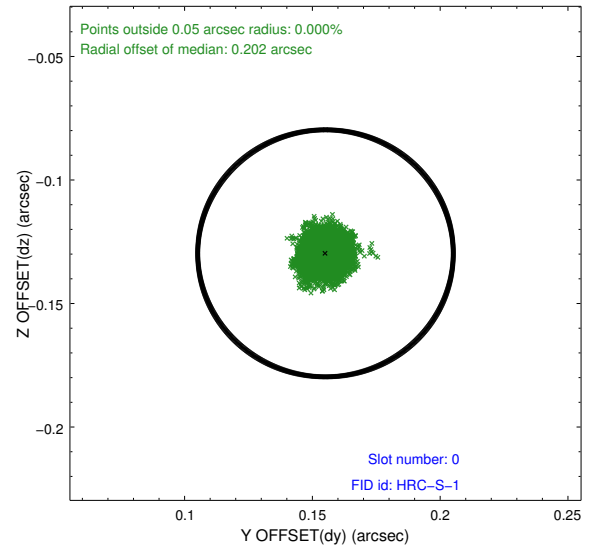
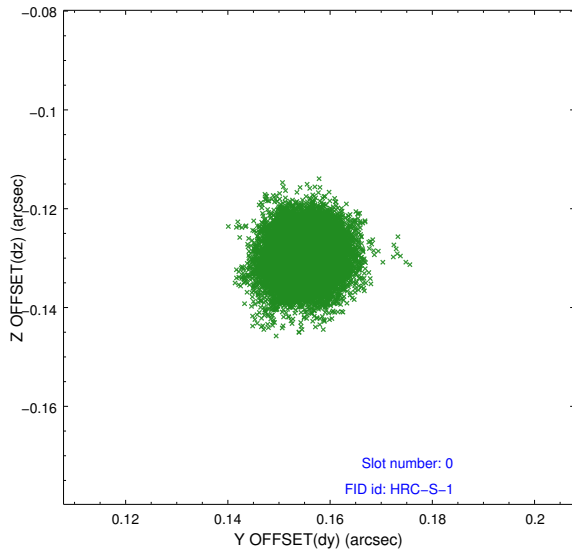


2.4.5 Slot 7

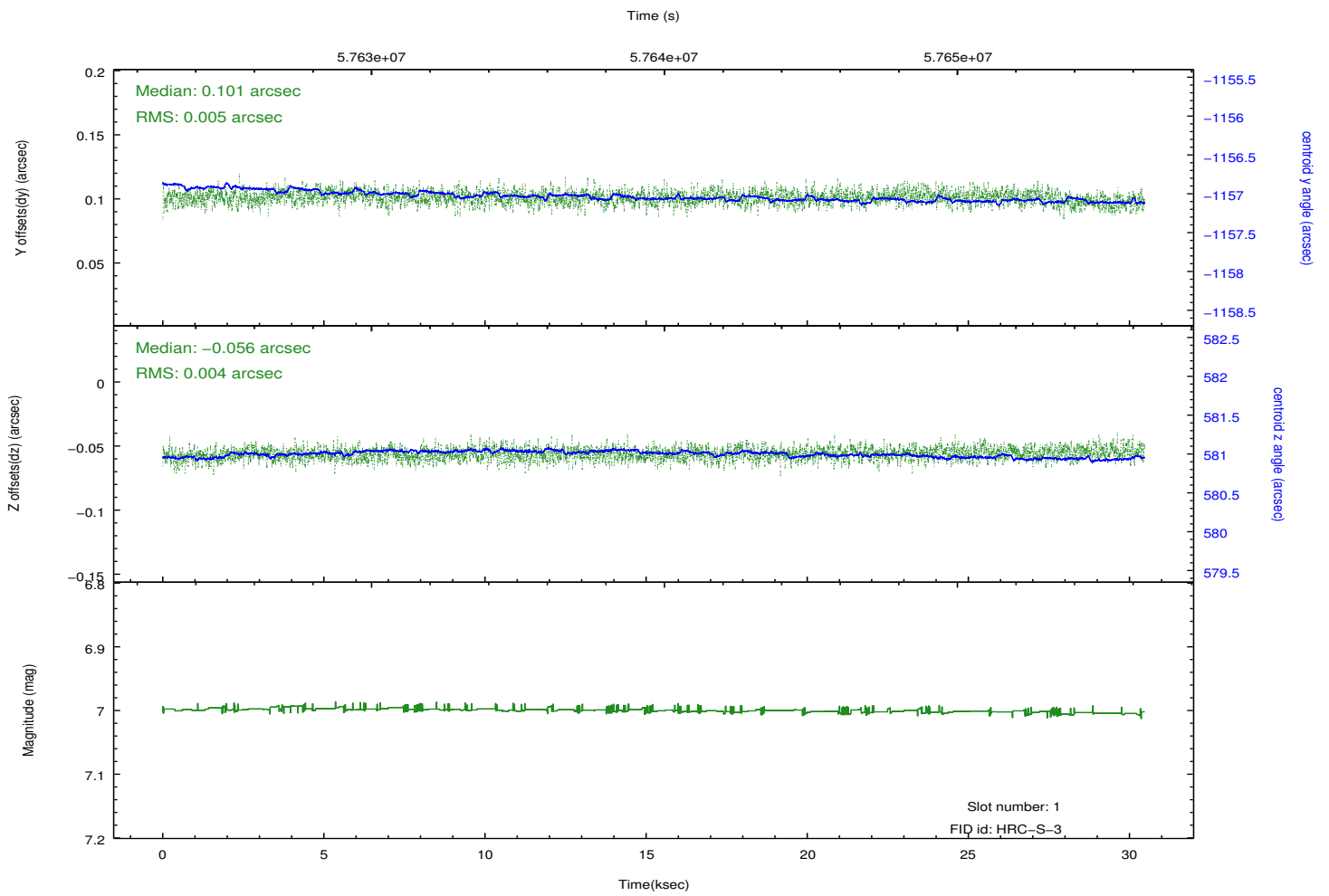
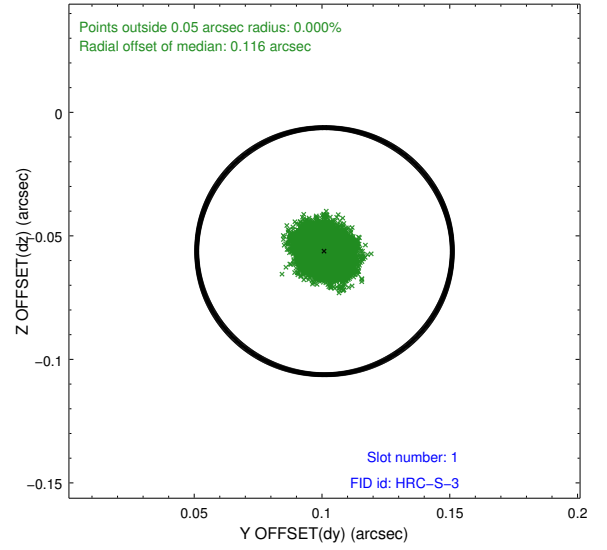
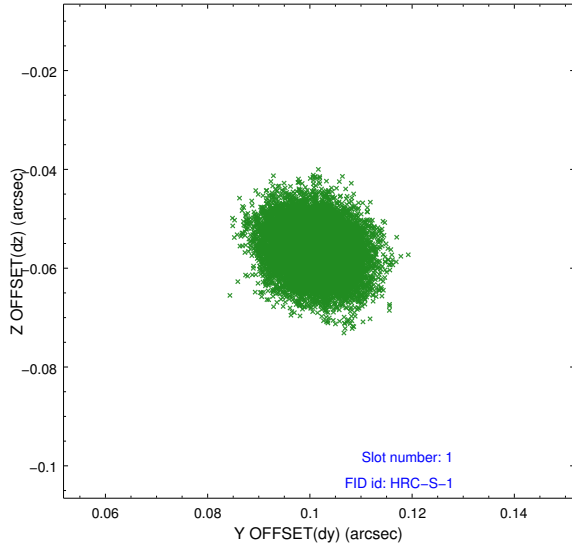


2.5 FID Slots

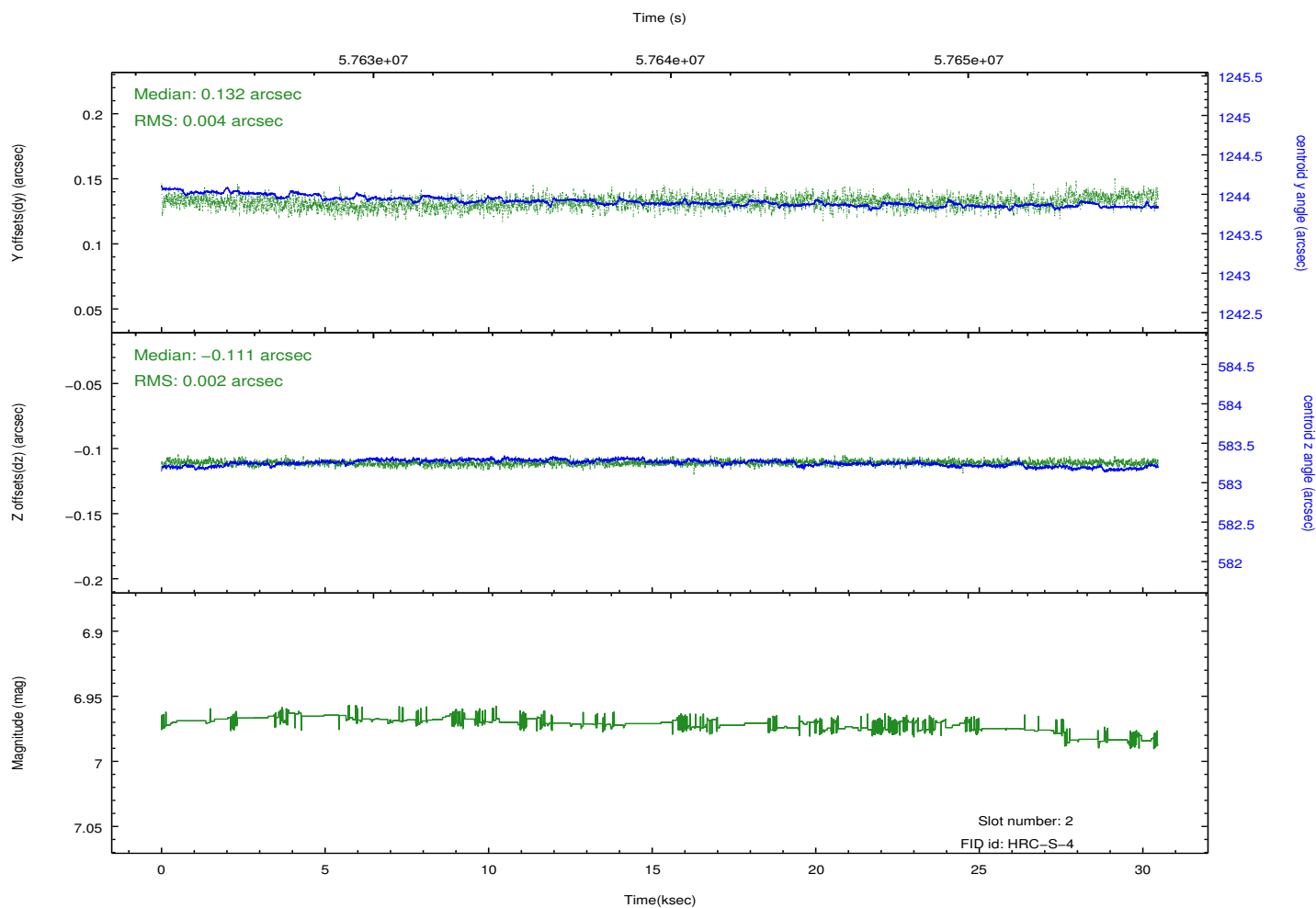
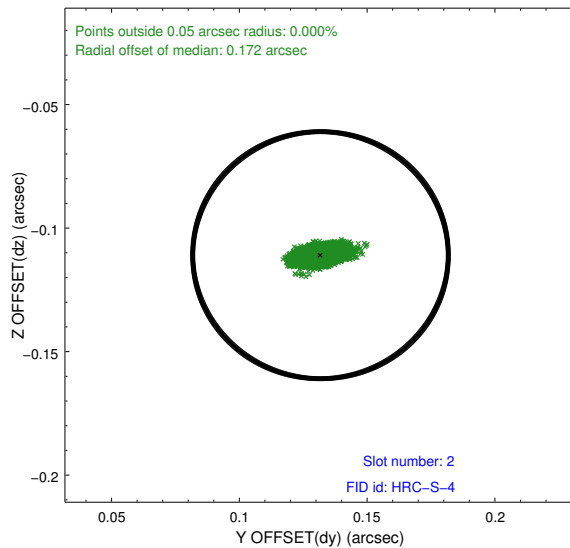
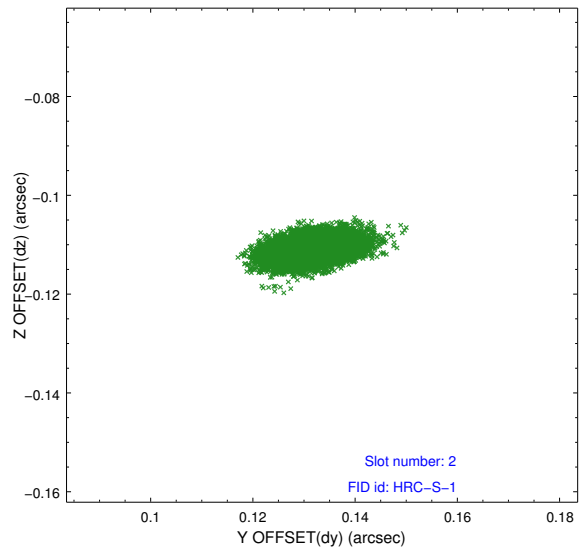
2.5.1 Slot 0



2.5.2 Slot 1

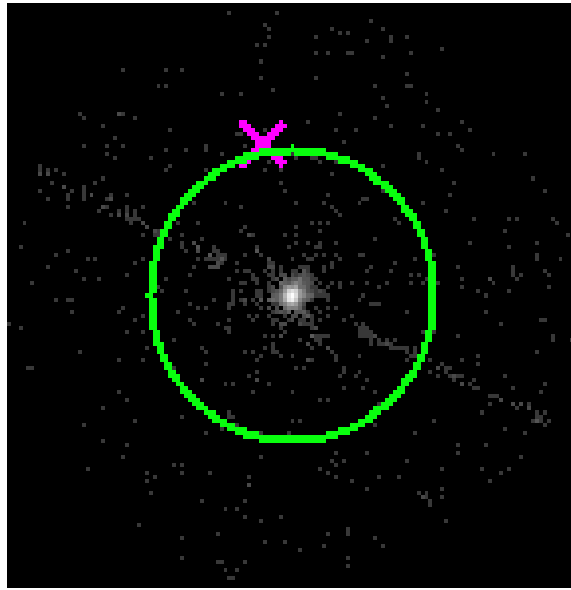


2.5.3 Slot 2

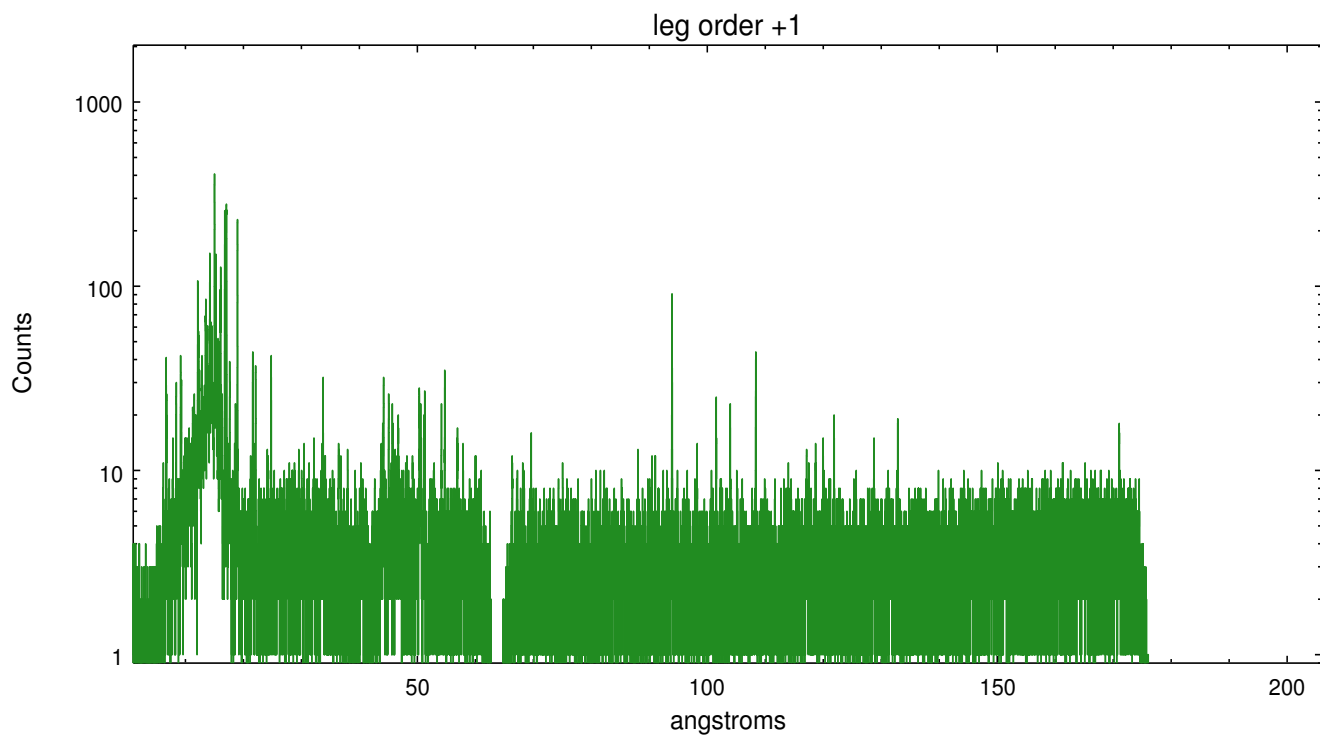
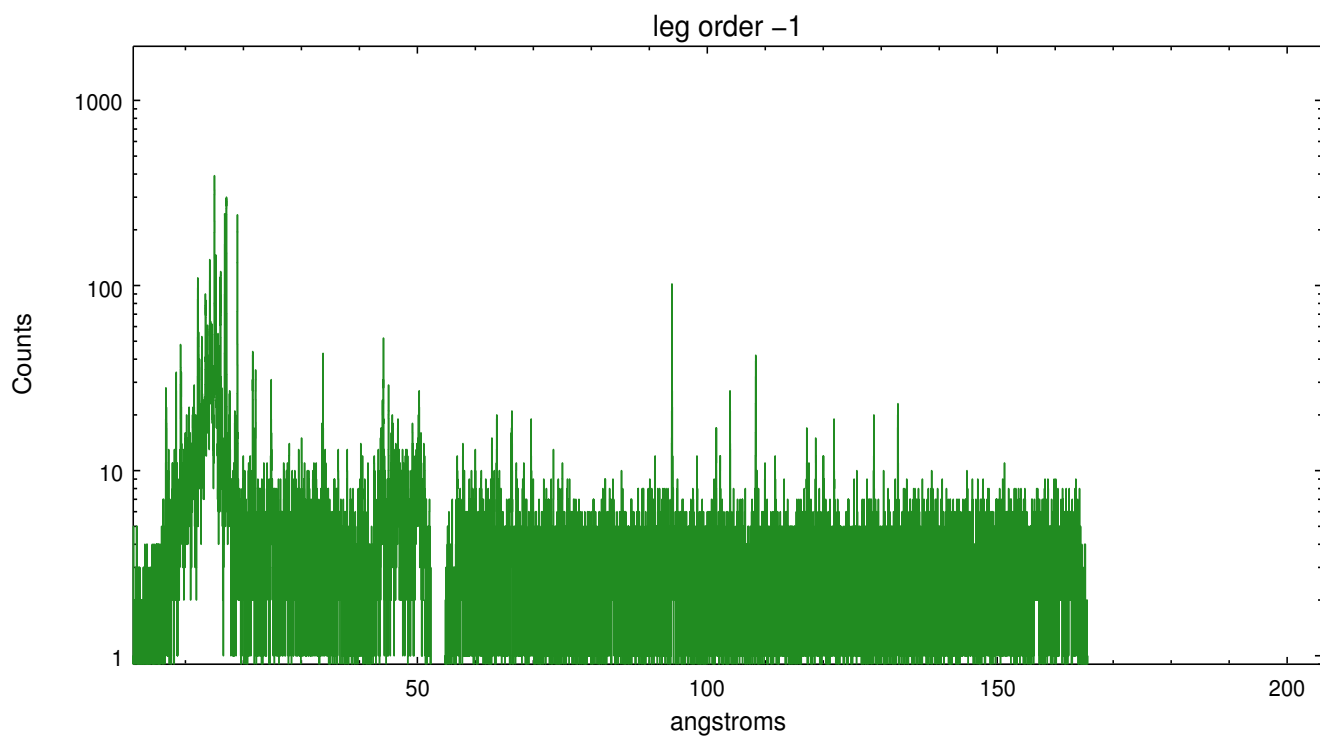


3 Gratings

3.1 LETG Arm



LETG Zero Order



A Summary

A.1 Status

V&V Scientist	Joy Nichols
V&V Date (YYYY-MM-DD)	2010.05.12
V&V Edition	1
V&V Disposition and Status	OK
V&V Charge Time	30.186

A.2 Comments

HRC-S LETG plate focus test.