

V&V Reference Report

L2 ASCDS Version : 8.4.5

Observation 14440 - L2 Version 3
Chandra X-Ray Center

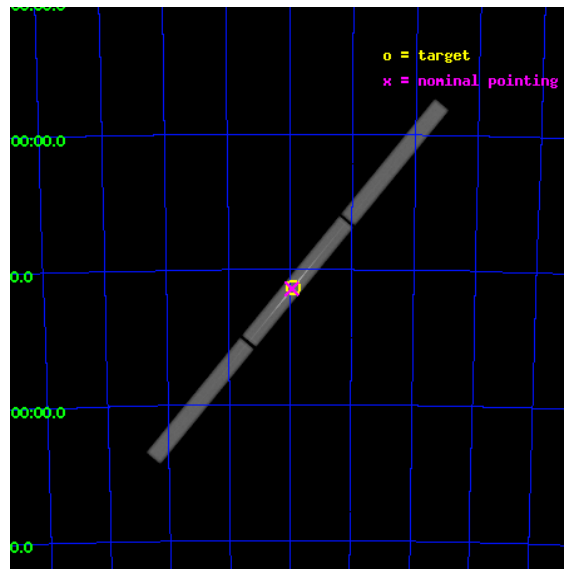
L2 Processing Date : Aug 10 2012

Contents

1	Front	2
2	OBI	3
2.1	OBI	3
2.1.1	Images	3
2.1.2	Parameters	4
2.1.3	Events	4
2.2	Compared Parameters	5
2.3	Aspect	6
2.4	Star Slots	9
2.4.1	Slot 3	9
2.4.2	Slot 4	10
2.4.3	Slot 5	11
2.4.4	Slot 6	12
2.4.5	Slot 7	13
2.5	FID Slots	14
2.5.1	Slot 0	14
2.5.2	Slot 1	15
2.5.3	Slot 2	16
3	Gratings	17
3.1	LETG Arm	17
A	Summary	19
A.1	Status	19
A.2	Comments	19

1 Front

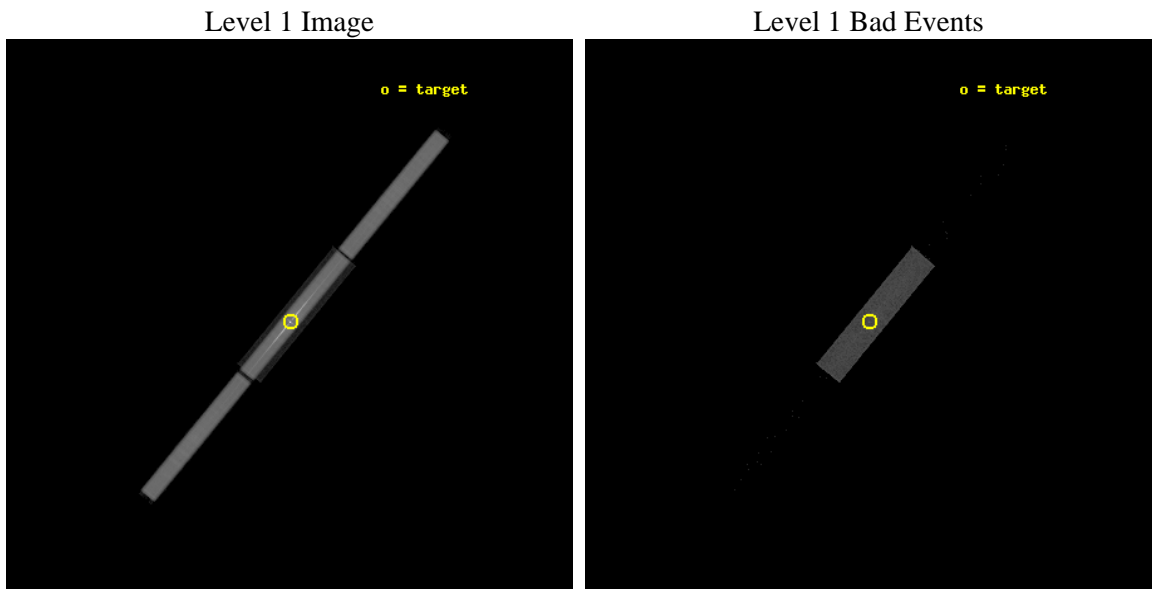
seq_num	401298	Sequence number
obs_id	14440	Observation id
title	A deep Chandra LETGS observation of the ultra-compact X-ray binary 4U 1543-624	Proposal title
observer	Dr Jelle Kaastra	Principal investigator
object	4U 1543-624	Source name
ra_targ	236.977917	Observer's specified target RA [deg]
dec_targ	-62.568167	Observer's specified target Dec [deg]
ra_nom	236.98450122824	Nominal RA [deg]
dec_nom	-62.571894956905	Nominal Dec [deg]
roll_nom	309.50078306184	Nominal Roll [deg]
revision	3	Processing version of data
ontime	23689.032513142	[s]
livetime	23480.214786683	Ontime multiplied by DTCOR
l2events	1761489	Number of level 2 events



2 OBI

2.1 OBI

2.1.1 Images



2.1.2 Parameters

obi_num	0	Obi number	sched_exp_time	23500.000000	[s] Scheduled observation exposure time
ascdsver	8.4.5	Processing system revision	ontime	23689.032513142	[s]
caldsver	4.5.1.1	 	l1events	2481364	Number of level 1 events
date	2012-08-10T06:27:48	Date and time of file creation			
revision	3	Processing version of data			

2.1.3 Events

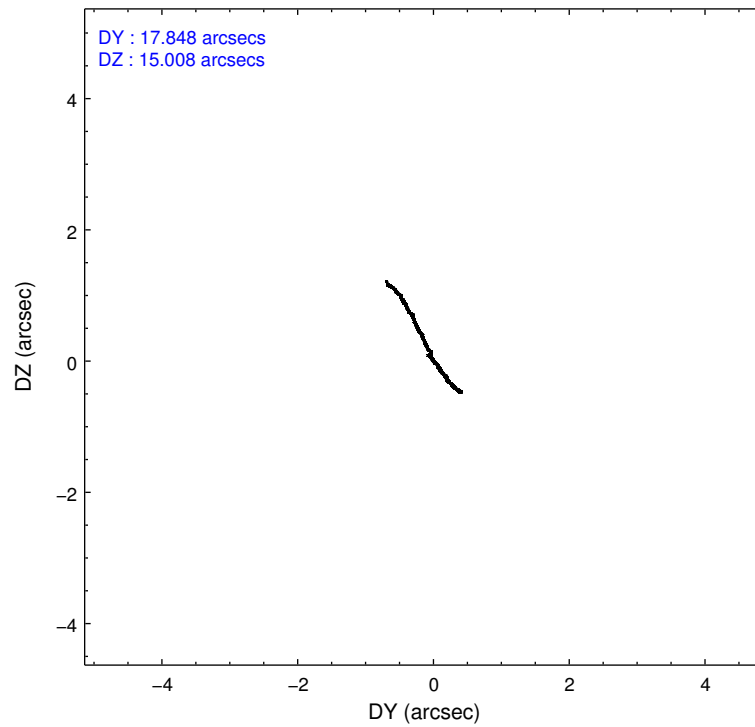
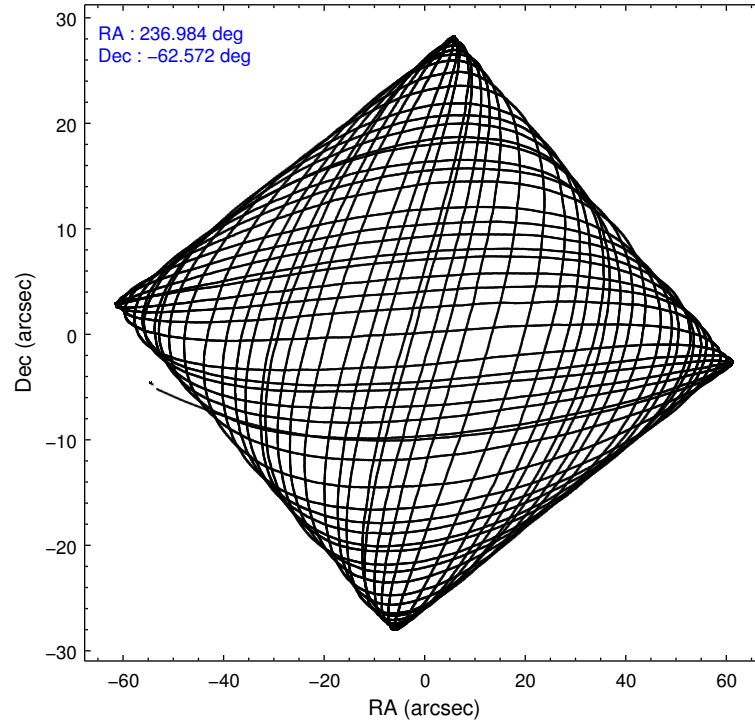
Level 1 Events

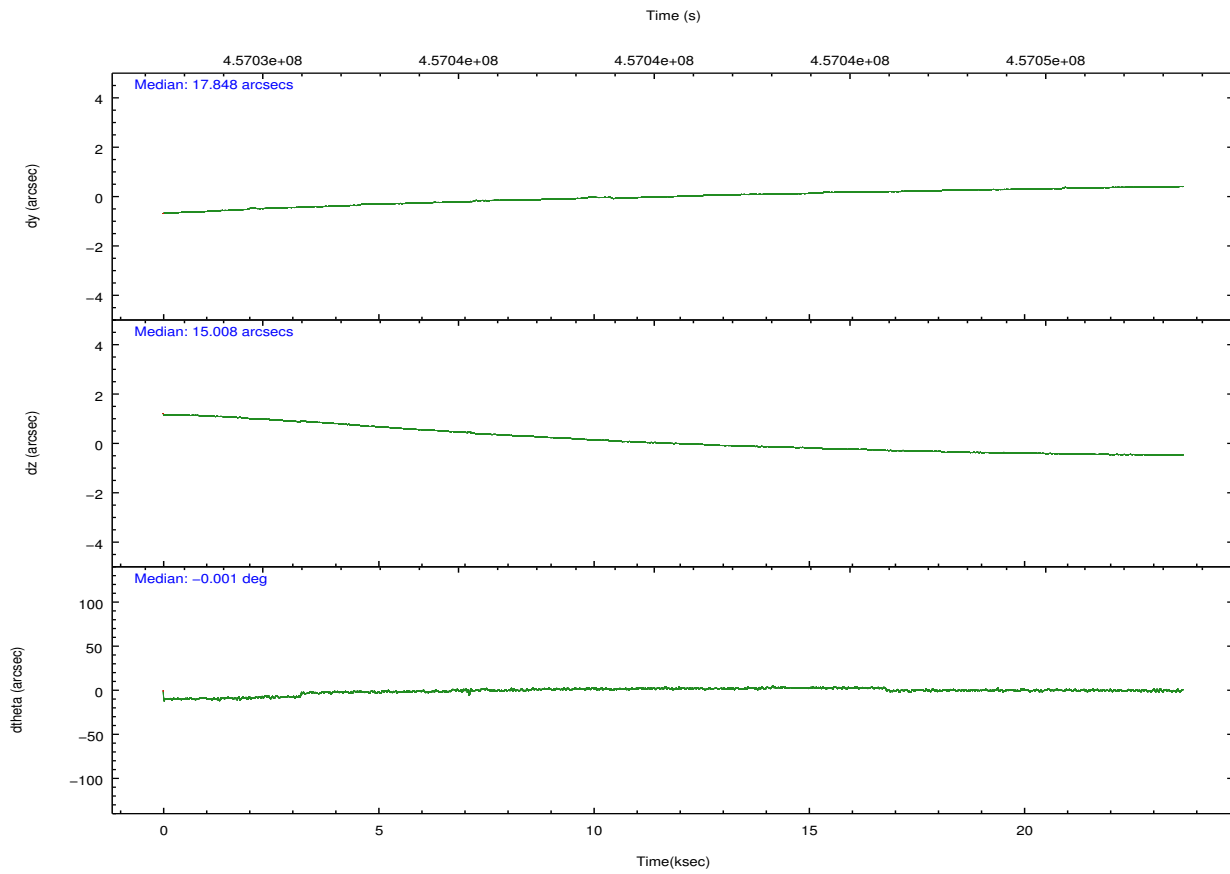
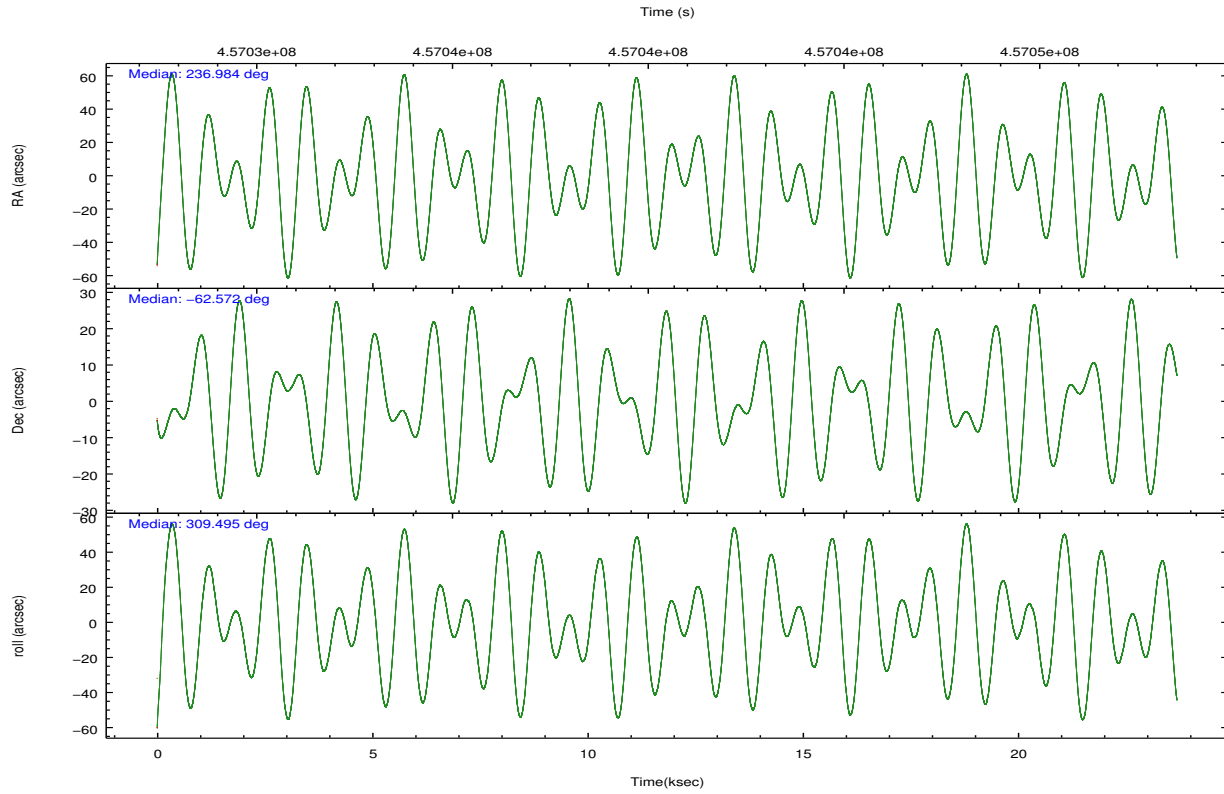
	segment 1	segment 2	segment 3
level 1 events	720719	1037183	723462
rejected events	26181	94037	26363
rejected %	3%	9%	3%

2.2 Compared Parameters

Parameter	Planned	Actual	Parameter	Planned	Actual
Instrument	HRC	HRC	Obspar format version number	7	7
Detector	HRC-S	HRC-S			
Grating	LETG	LETG			
Data mode	OBSERVING	OBSERVING	Obspar file type	PREDICTED	ACTUAL
Observation mode	POINTING	POINTING			
[deg] Pointing RA	236.924996	236.984501228239	Obspar update status	NONE	UPDATED
[deg] Pointing Dec	-62.563173	-62.57189495690476			
[deg] Pointing Roll	309.380628	309.5007830618427			
[mm] SIM focus pos	-1.429586	-1.428180813131781			
[mm] SIM defocus	0.1037507710433287	0.1051558262725154			
[mm] SIM translation stage pos	250.455976	250.4635187648994			
[mm] SIM translation stage offset	0	-0.007540371344731511			
[s] Observation start time (MET)	457028819.184000	457027776.31427			
Observation start date	2012-06-25T16:25:53	2012-06-25T16:09:36			
[s] Observation end time (MET)	457052319.184000	457053738.02815			
Observation end date	2012-06-25T22:57:33	2012-06-25T23:22:18			

2.3 Aspect



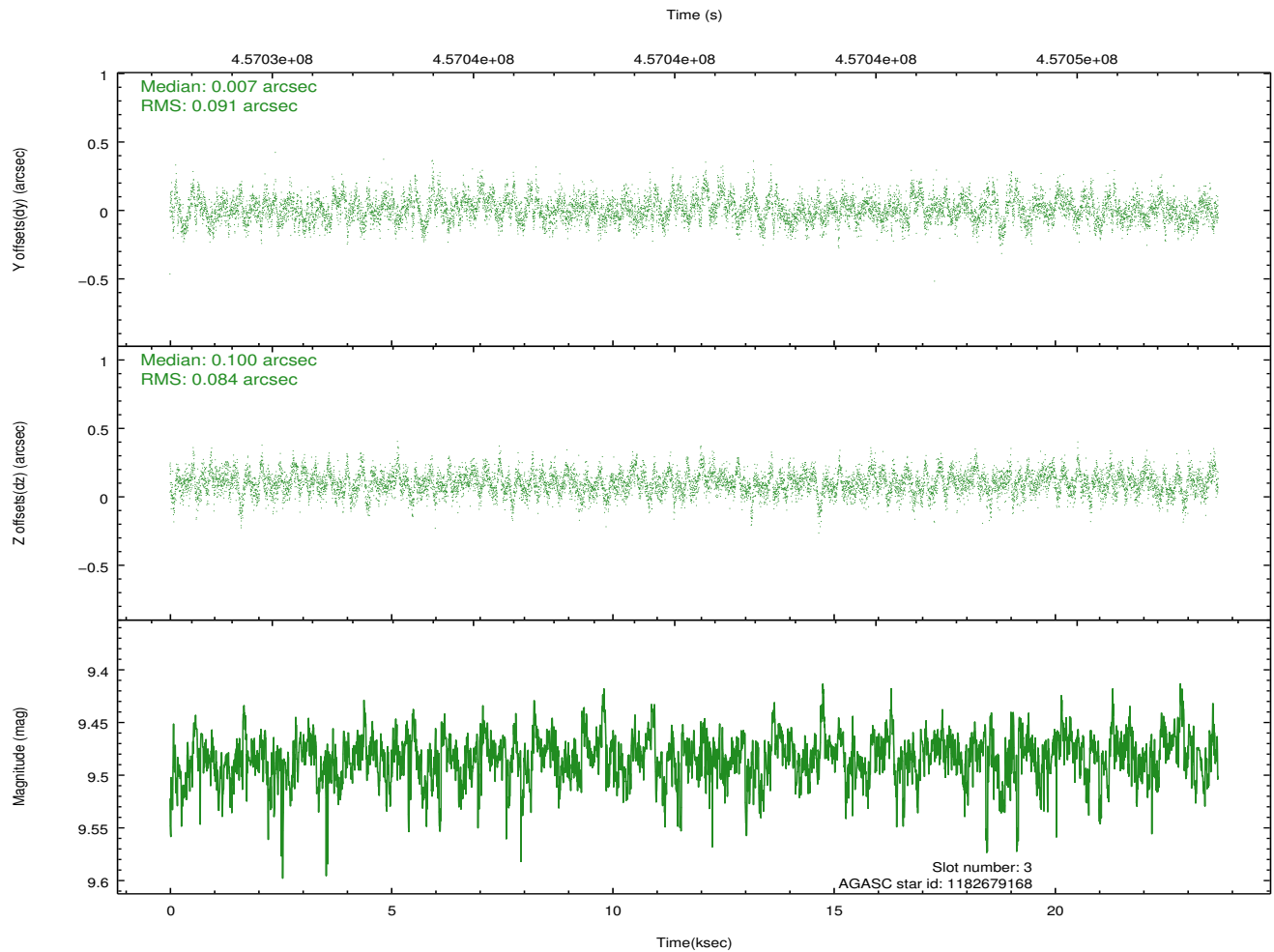
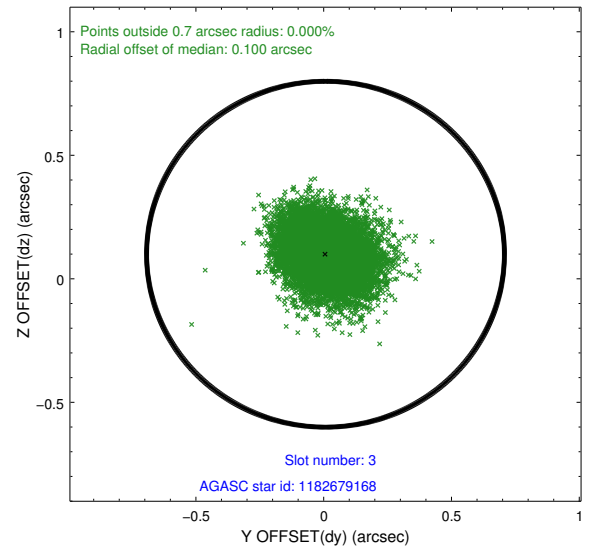
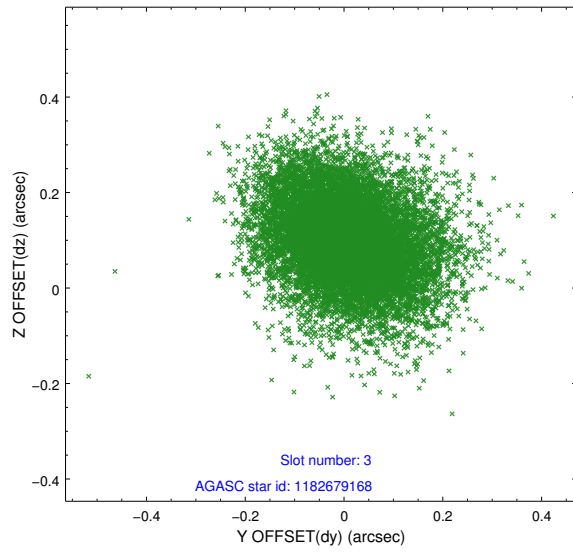


Slot Statistics

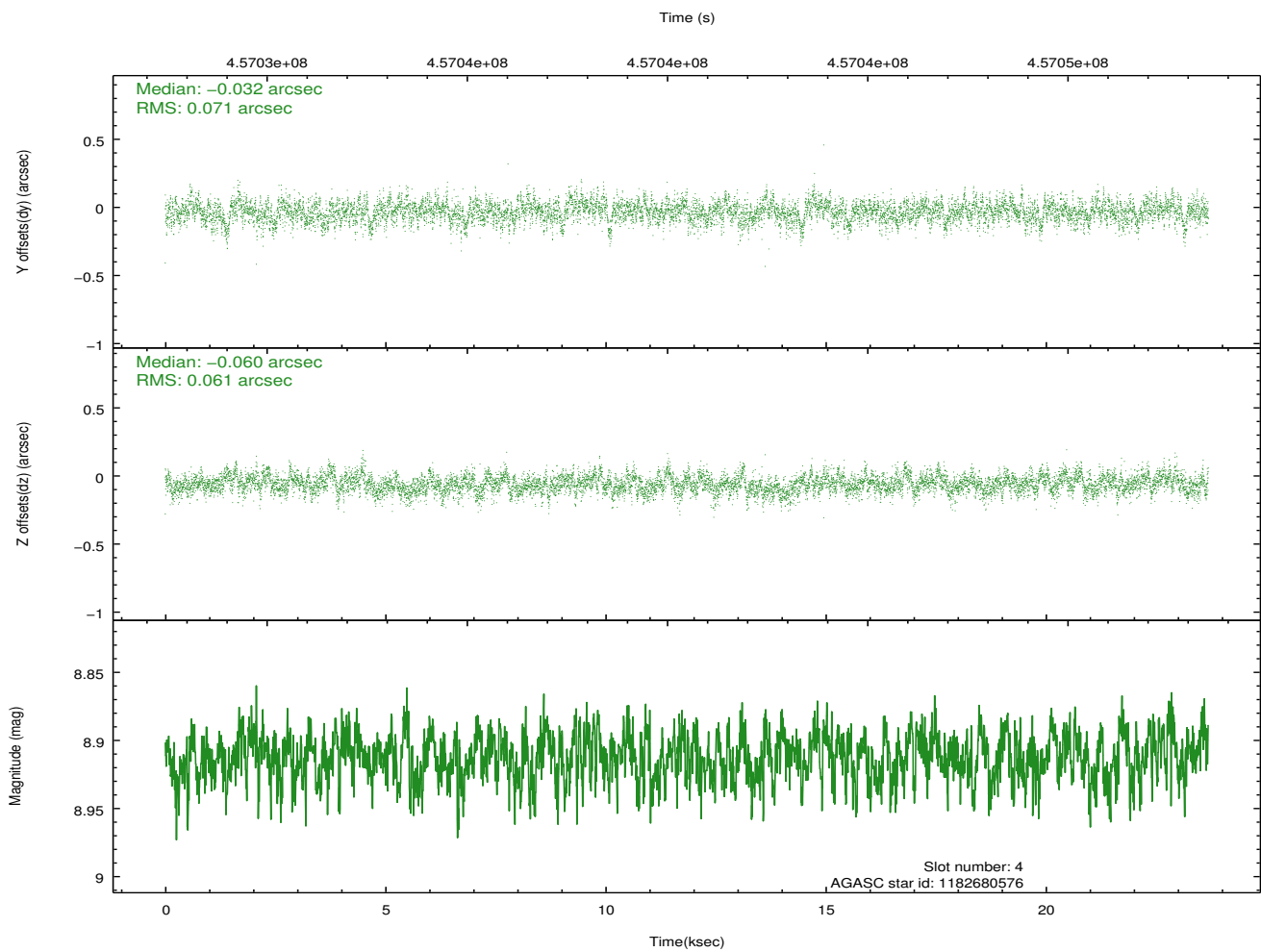
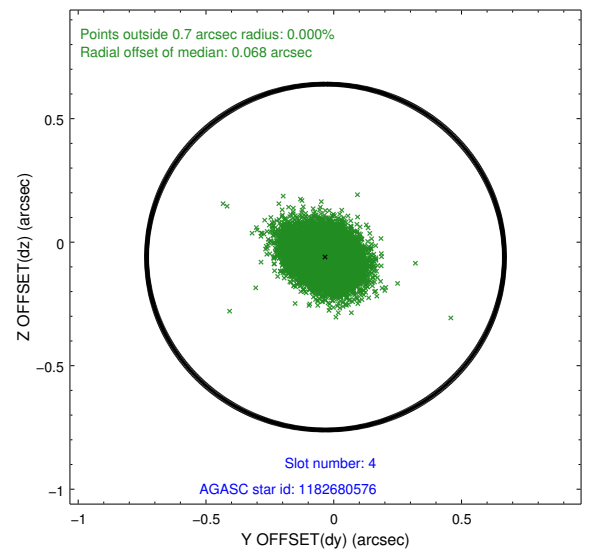
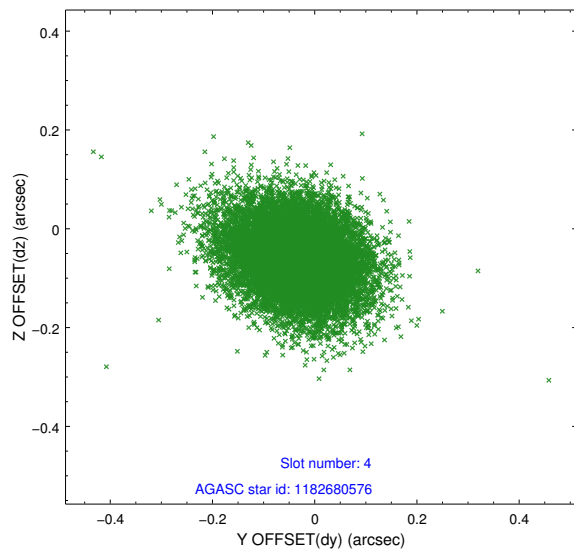
slot	status	id	mag	n_pts	med_dy	med_dz	dr1	dr2	ra	dec	mean_y	mean_z
0	FID	HRC-S-2	7.01	5779	0.203	-0.156	0.020	0.054	0.000000	0.000000	1227.48	-456.65
1	FID	HRC-S-3	7.04	5779	-0.035	-0.069	0.011	0.021	0.000000	0.000000	-1174.91	565.61
2	FID	HRC-S-4	6.98	5779	0.237	-0.071	0.020	0.053	0.000000	0.000000	1225.93	568.27
3	GUIDE	1182679168	9.48	11548	0.007	0.100	0.131	0.217	236.939678	-61.784494	-2151.09	1797.90
4	GUIDE	1182680576	8.91	11473	-0.032	-0.060	0.098	0.162	237.172222	-61.698063	-2139.39	2301.71
5	GUIDE	1183207584	9.36	11519	-0.015	0.019	0.132	0.220	237.138811	-62.776335	816.85	-214.72
6	GUIDE	1183209232	7.25	11557	0.043	-0.072	0.096	0.159	236.750819	-62.796554	467.86	-753.24
7	GUIDE	1183217400	9.28	11516	-0.004	0.012	0.140	0.236	236.698468	-63.342991	1938.66	-2064.44

2.4 Star Slots

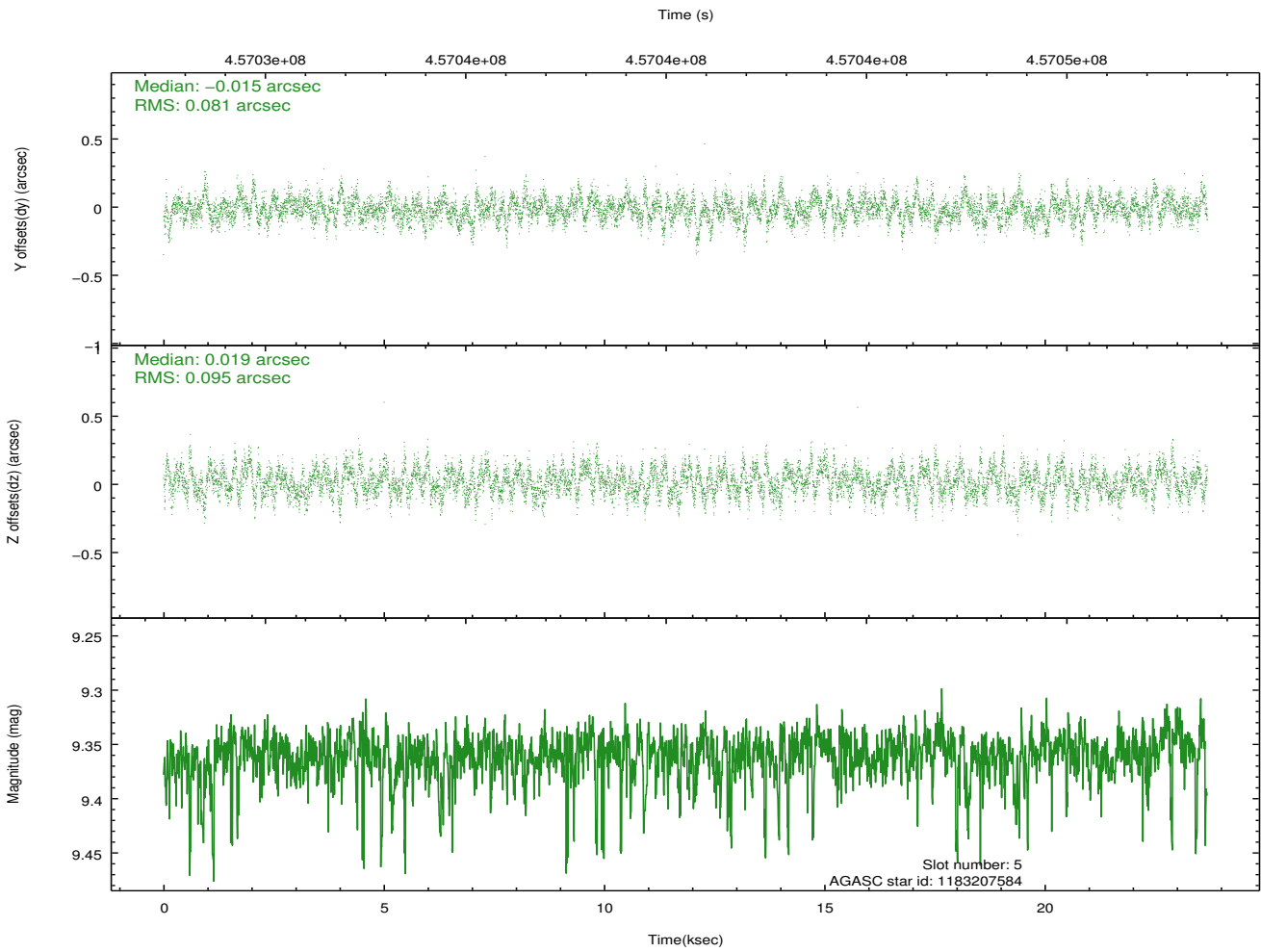
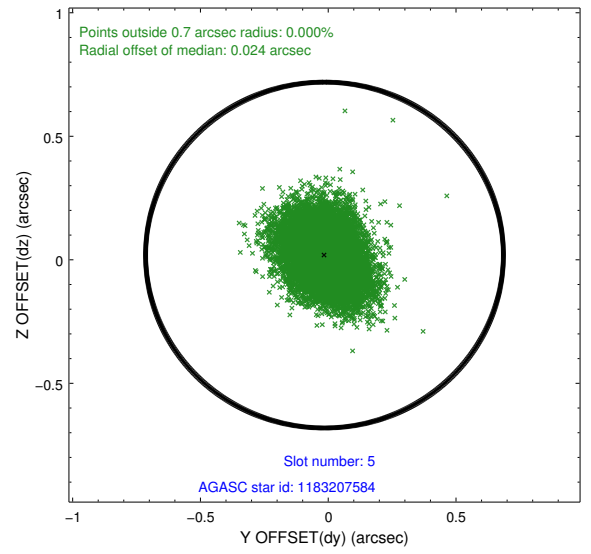
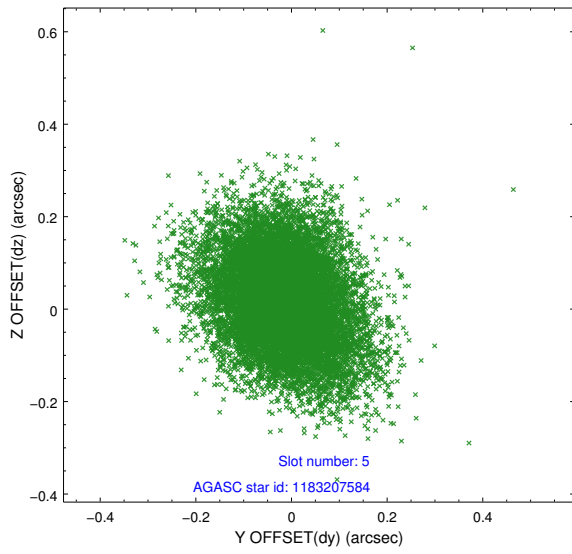
2.4.1 Slot 3



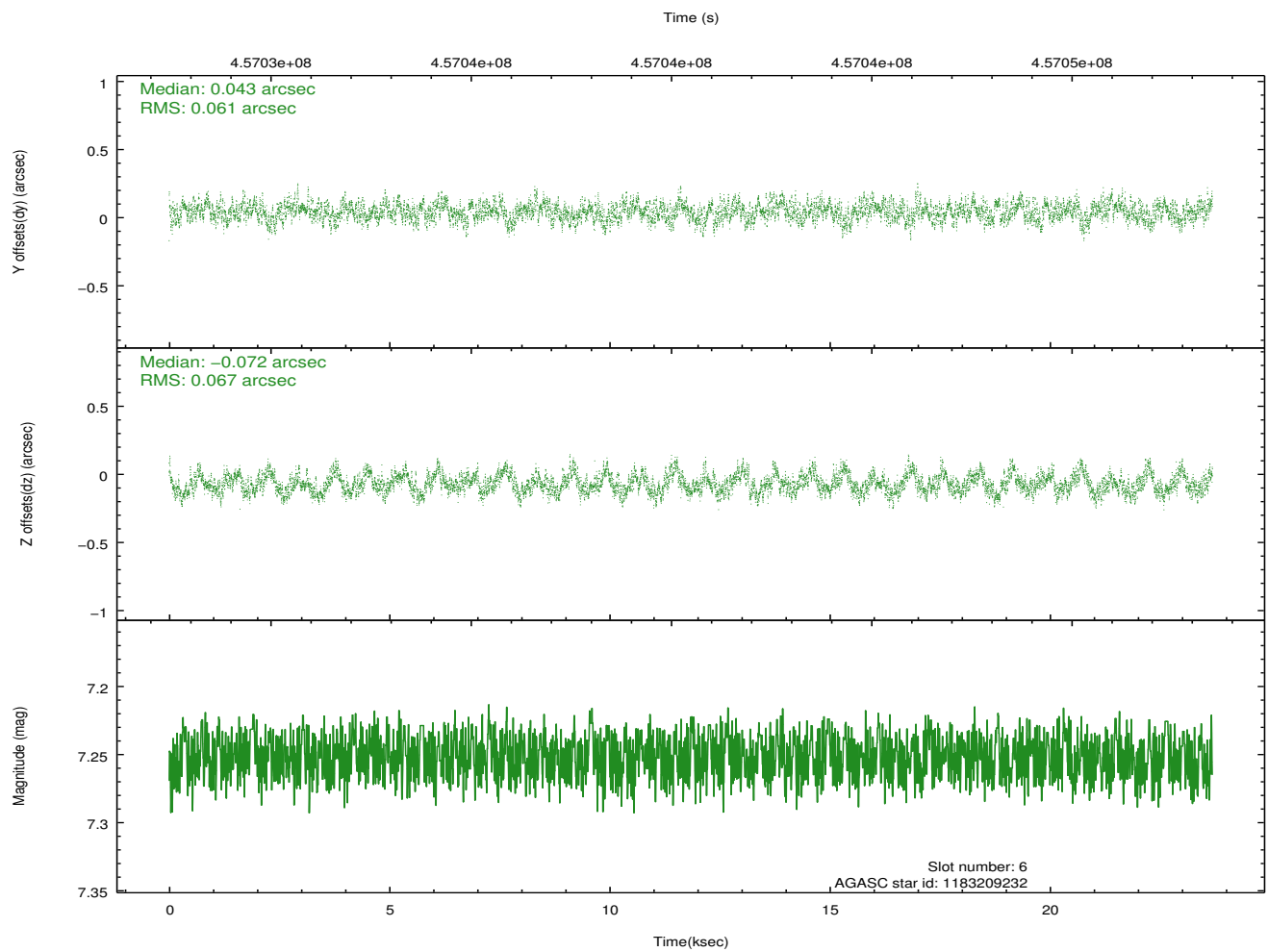
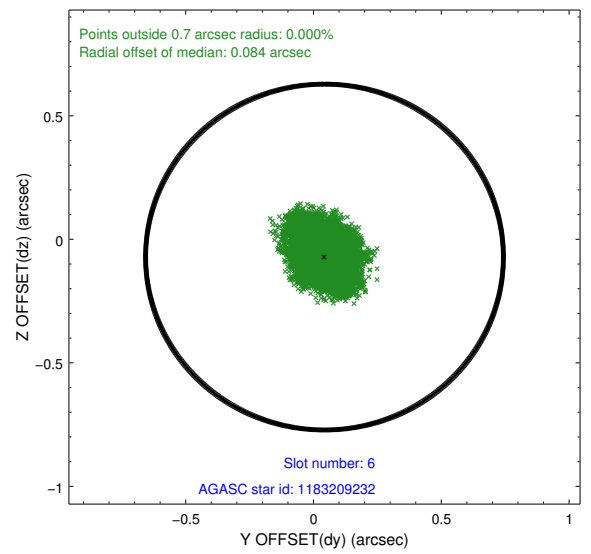
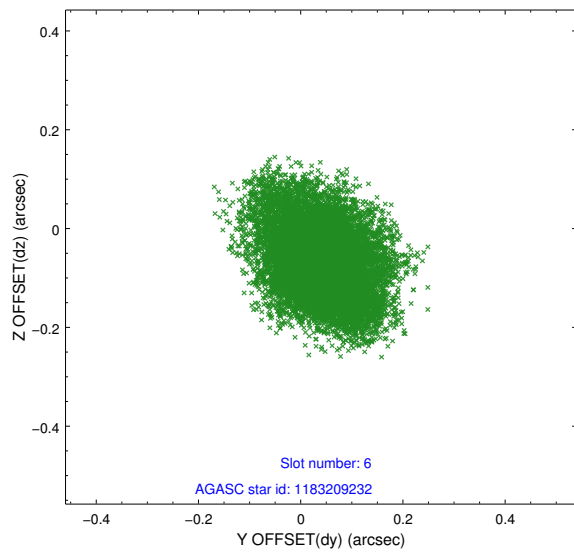
2.4.2 Slot 4



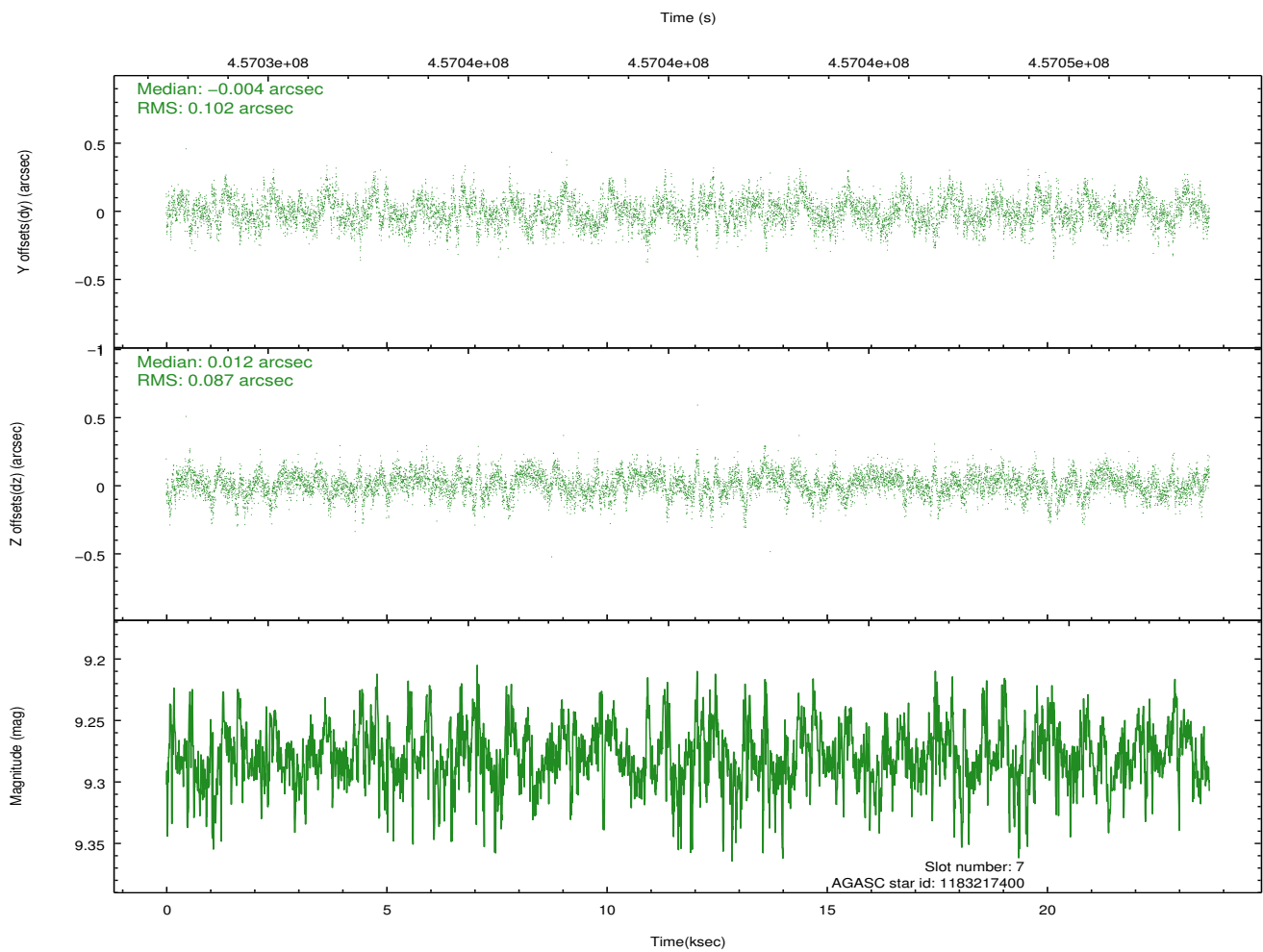
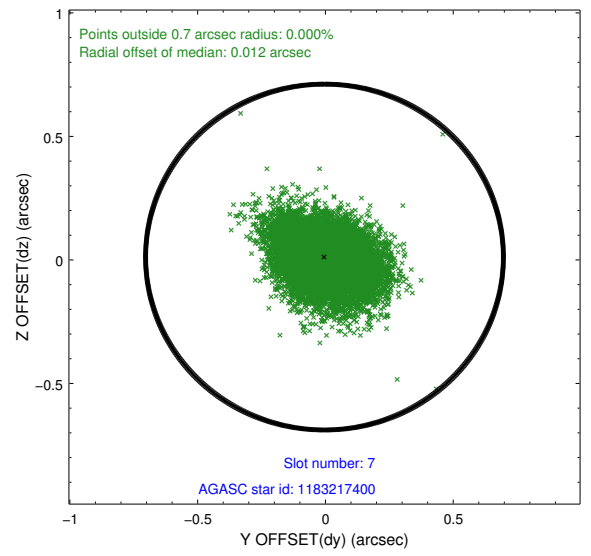
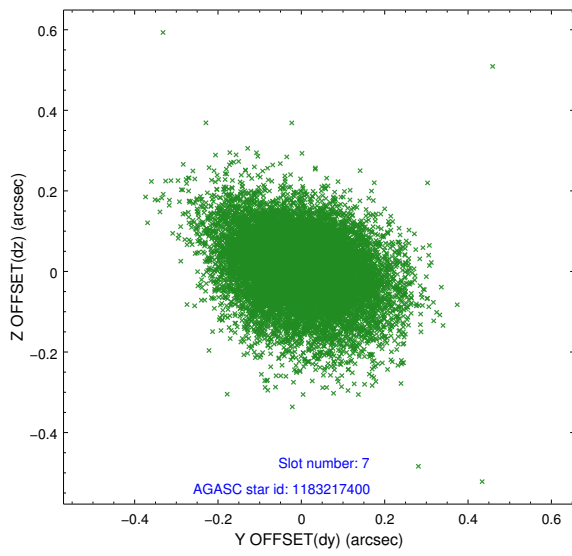
2.4.3 Slot 5



2.4.4 Slot 6

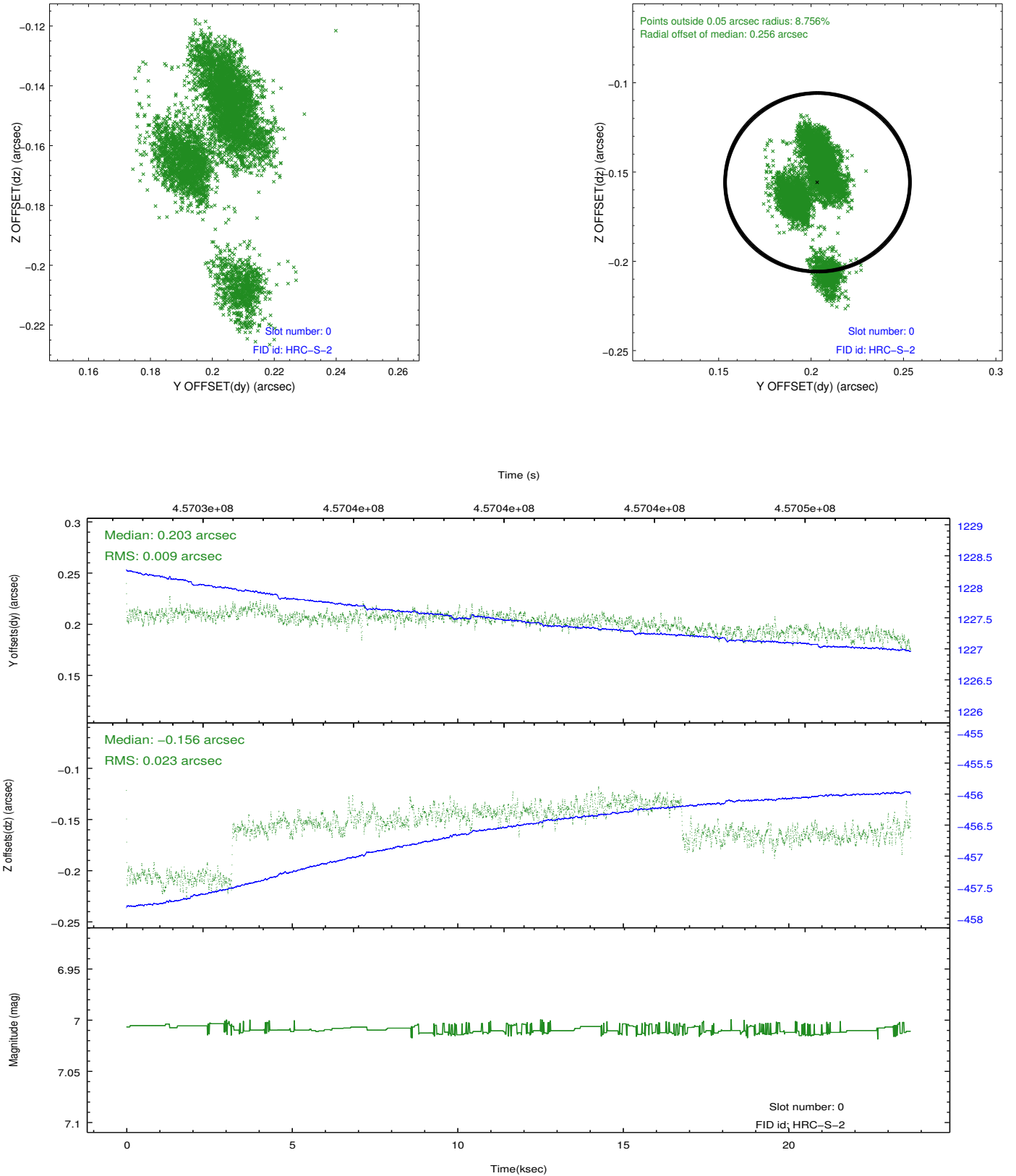


2.4.5 Slot 7

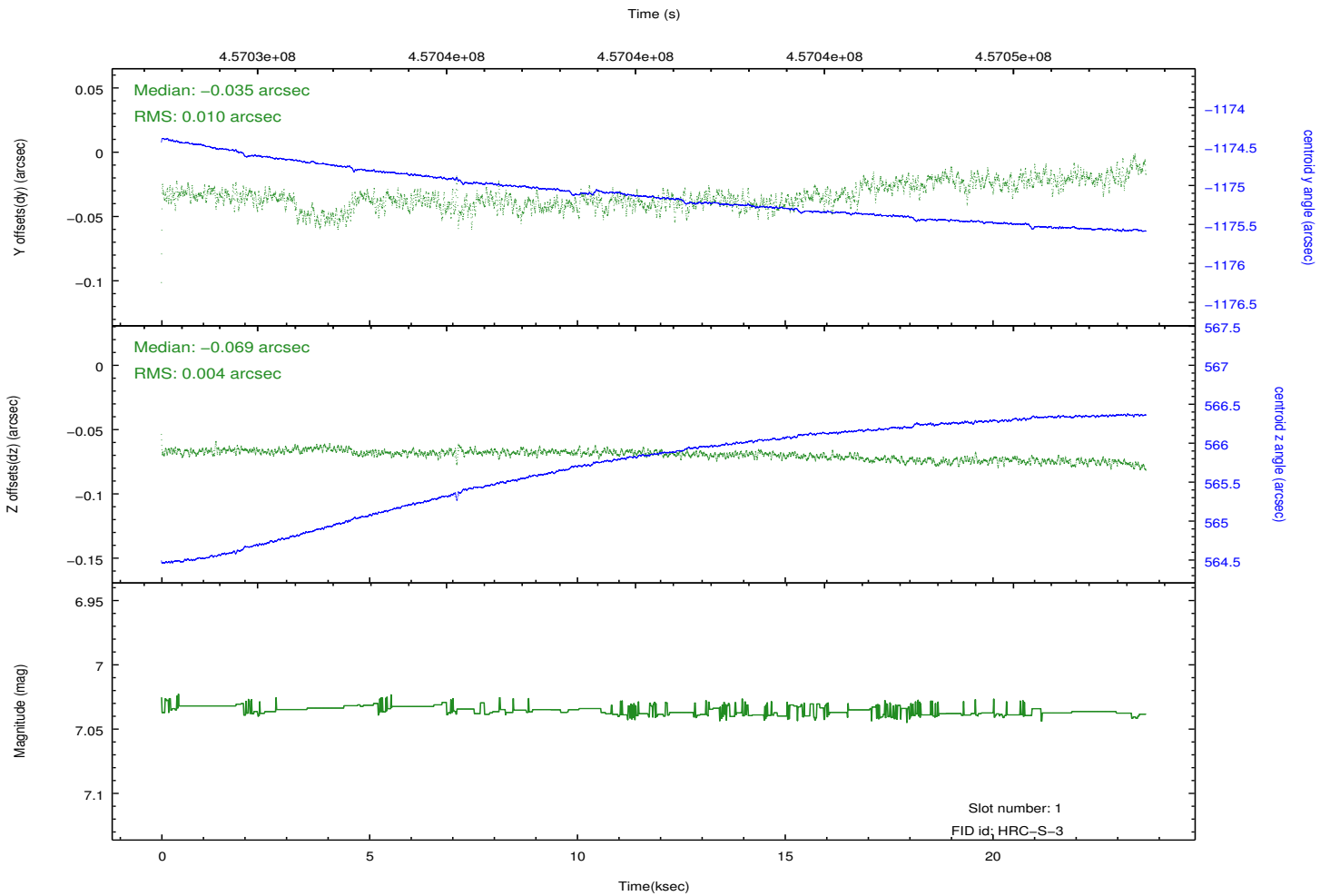
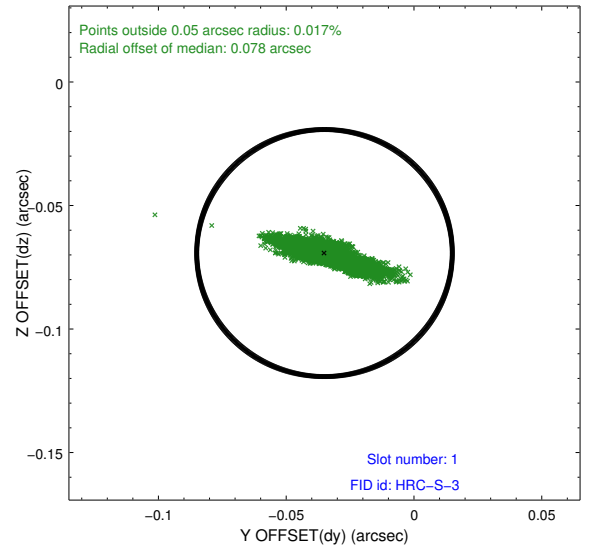
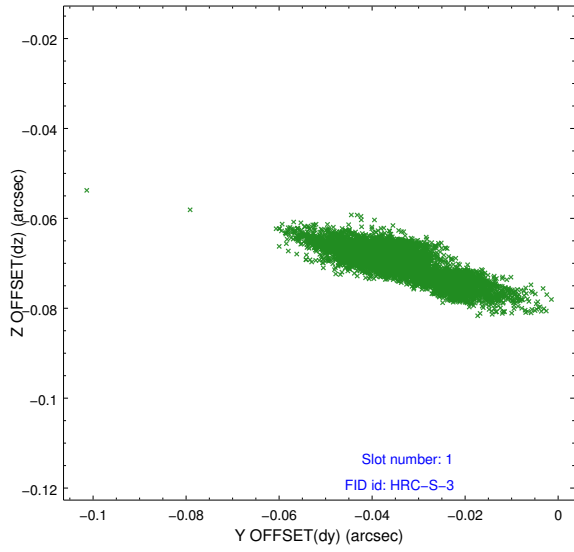


2.5 FID Slots

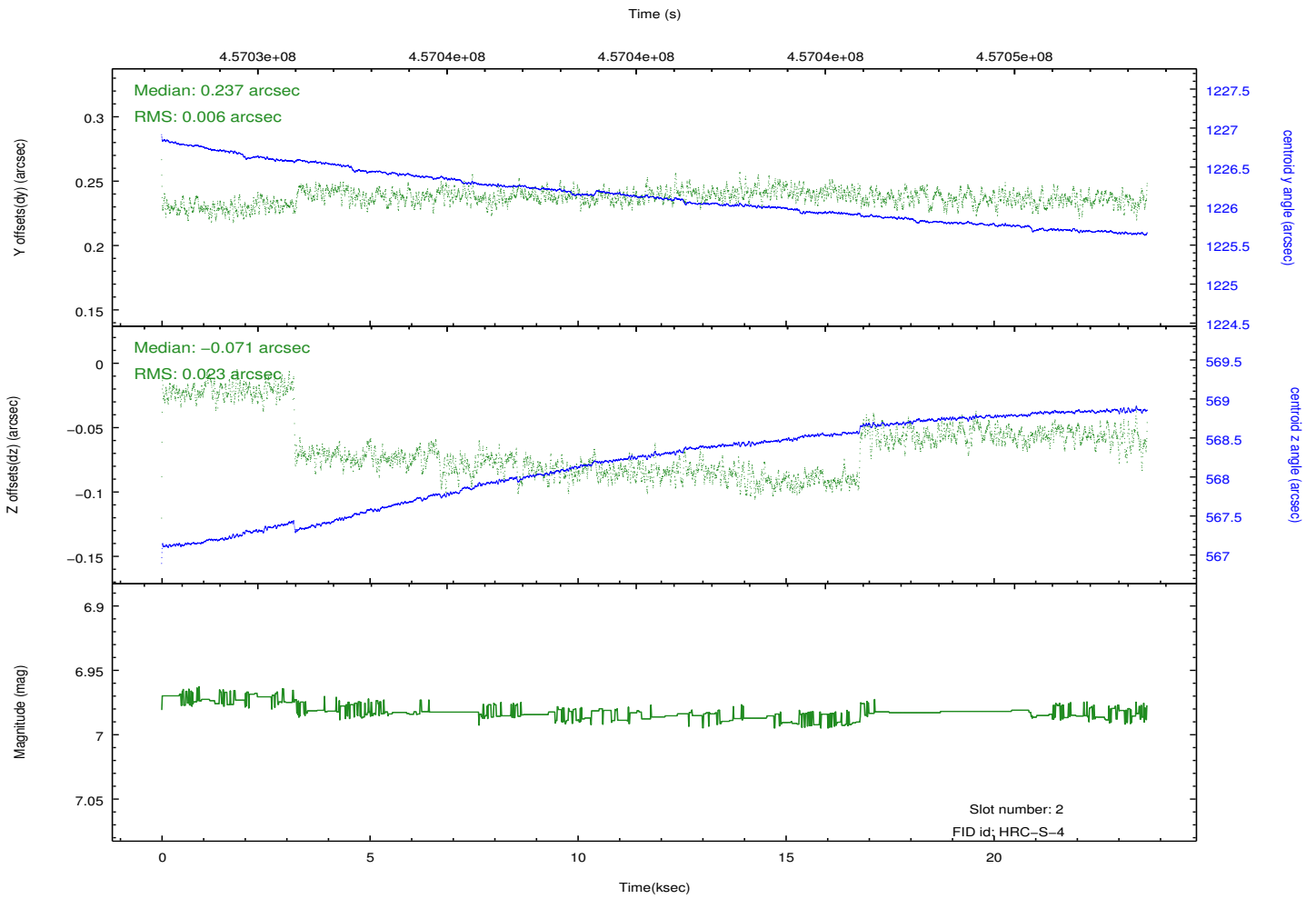
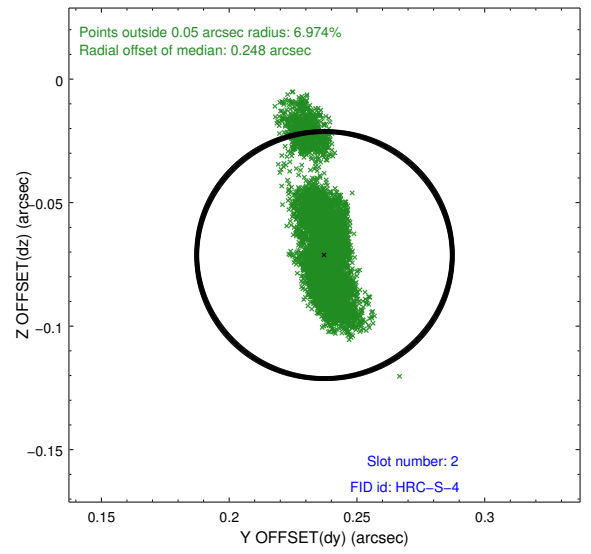
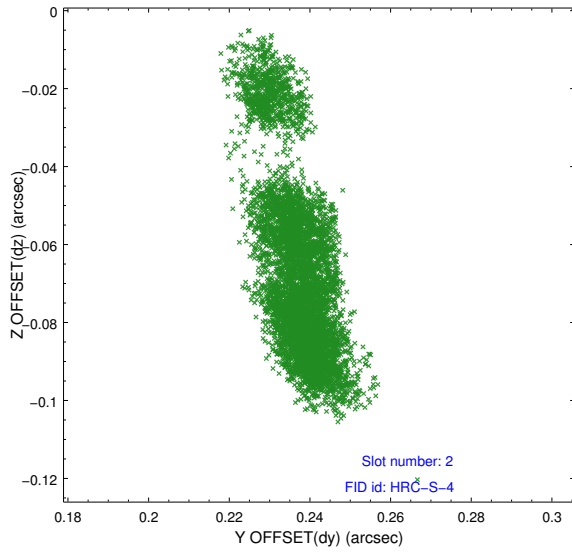
2.5.1 Slot 0



2.5.2 Slot 1

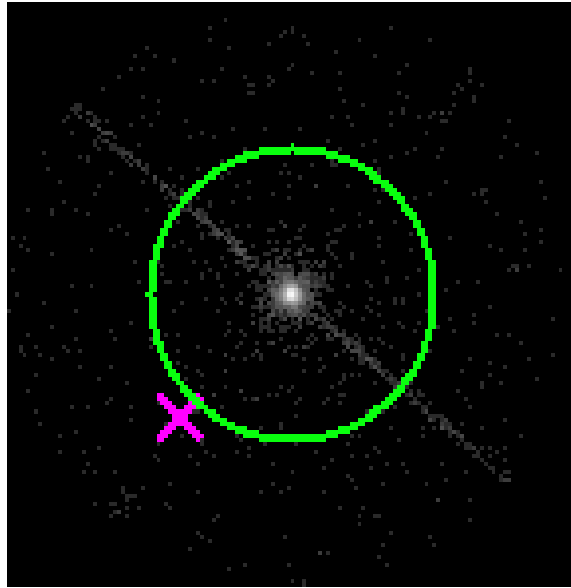


2.5.3 Slot 2

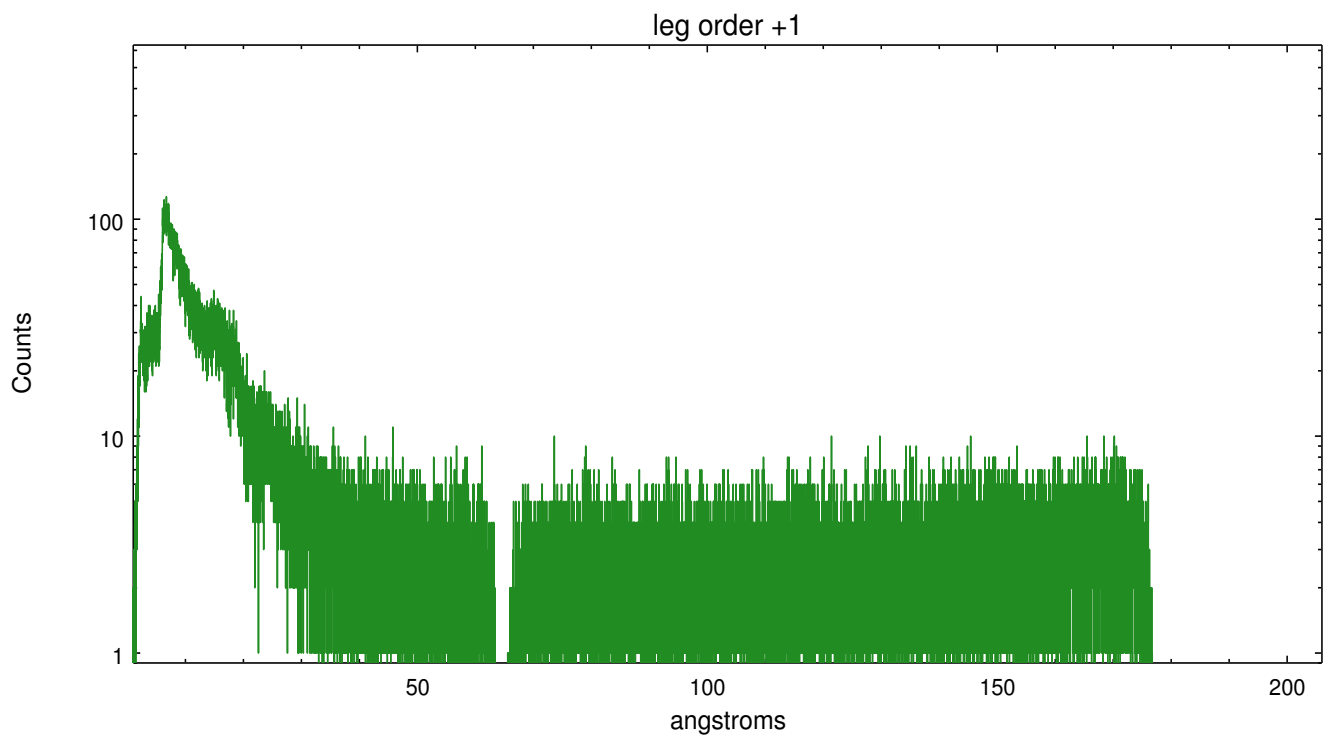
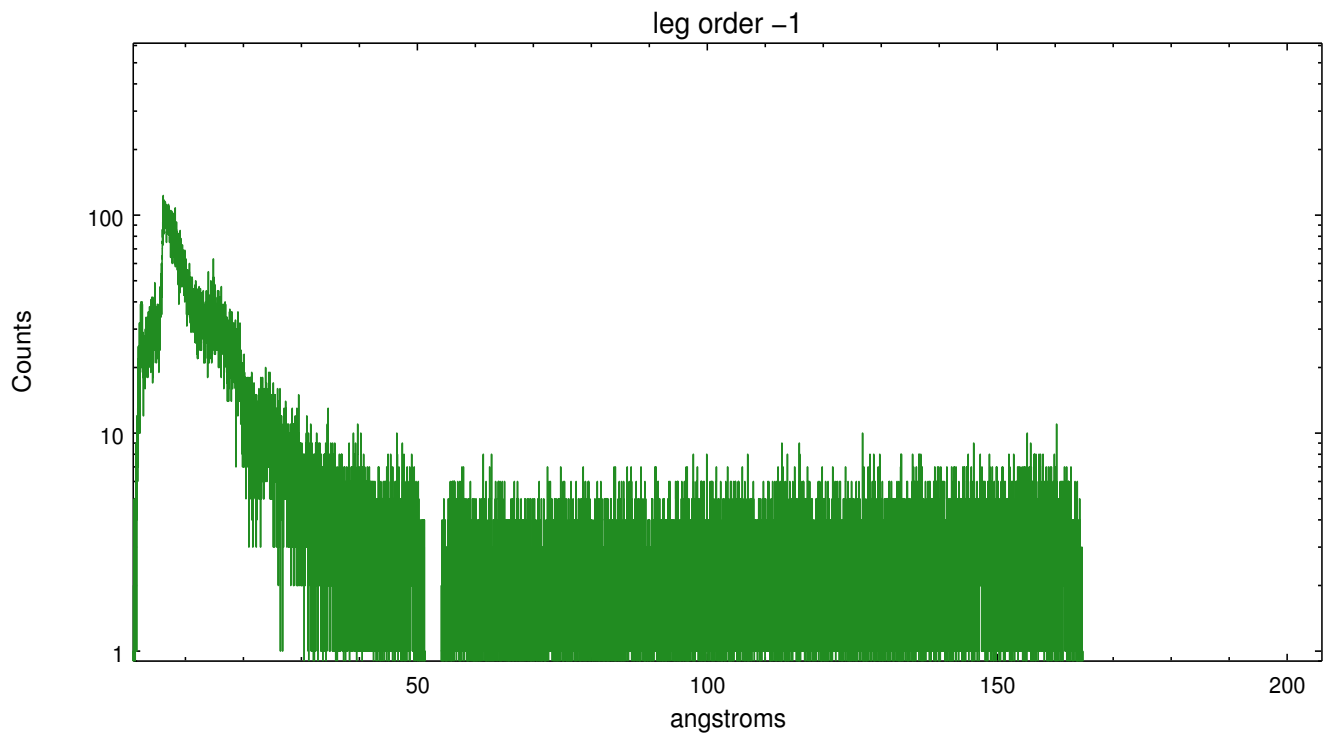


3 Gratings

3.1 LETG Arm



LETG Zero Order



A Summary

A.1 Status

V&V Scientist	Joy Nichols
V&V Date (YYYY-MM-DD)	2012.08.10
V&V Edition	1
V&V Disposition and Status	OK
V&V Charge Time	23.689032513142

A.2 Comments