

V&V Reference Report

L2 ASCDS Version : 8.5.1.1

Observation 14580 - L2 Version 2
Chandra X-Ray Center

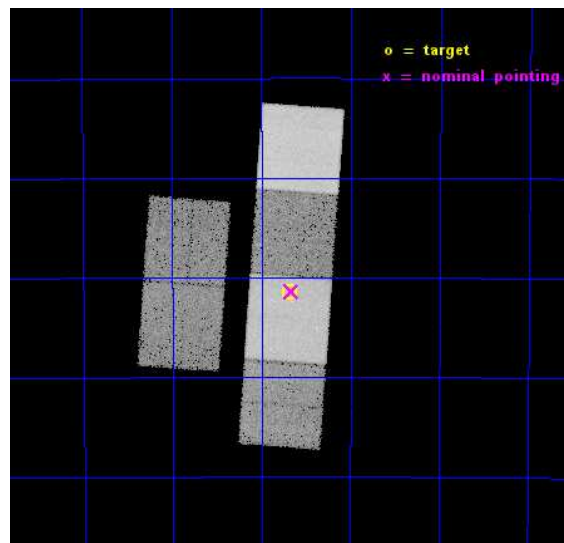
L2 Processing Date : Dec 1 2014

Contents

1	Front	2
2	OBI	3
2.1	OBI	3
2.1.1	Images	3
2.1.2	Bias	3
2.1.3	Parameters	4
2.1.4	Events	4
2.2	Compared Parameters	5
2.3	Aspect	6
2.4	Star Slots	9
2.4.1	Slot 3	9
2.4.2	Slot 4	10
2.4.3	Slot 5	11
2.4.4	Slot 6	12
2.4.5	Slot 7	13
2.5	FID Slots	14
2.5.1	Slot 0	14
2.5.2	Slot 1	15
2.5.3	Slot 2	16
A	Summary	17
A.1	Status	17
A.2	Comments	17

1 Front

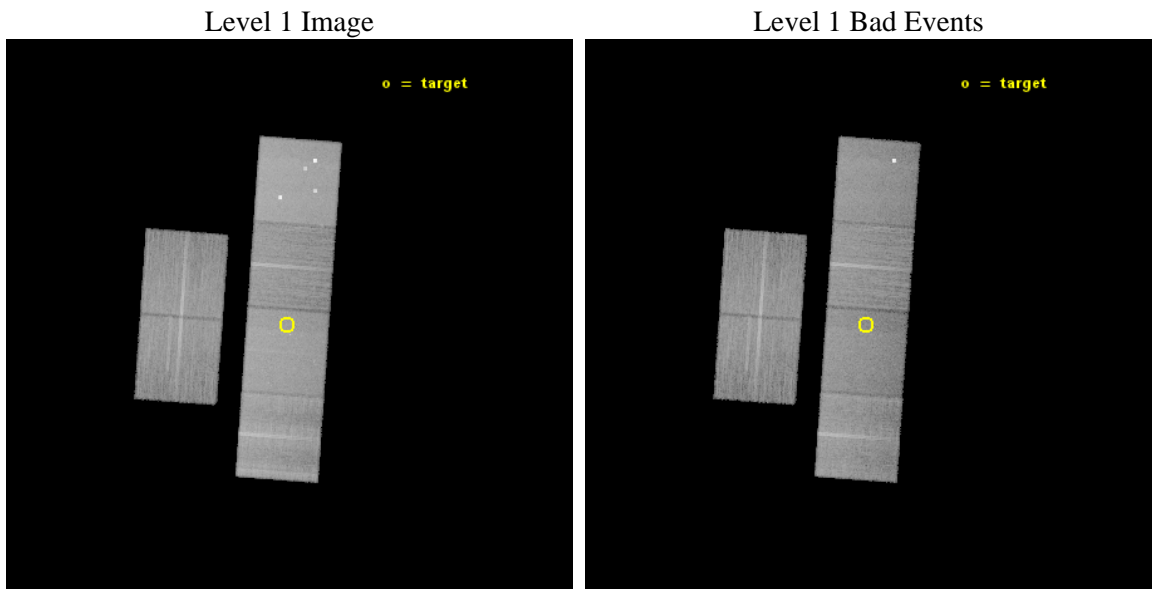
seq_num	200881	Sequence number
obs_id	14580	Observation id
title	COMPACT AND DIFFUSE X-RAY SOURCES IN THE YOUNGEST PLANETARY NEBULAE	
observer	Dr. Joel Kastner	Principal investigator
object	PN G329.0+01.9	Source name
dtcycle	0	
cycle	P	events from which exps? Prim/Second/Both
ra_targ	237.920417	Observer's specified target RA [deg]
dec_targ	-51.524611	Observer's specified target Dec [deg]
ra_nom	237.91616020359	Nominal RA [deg]
dec_nom	-51.523172413374	Nominal Dec [deg]
roll_nom	94.200327569277	Nominal Roll [deg]
revision	2	Processing version of data
ontime	29822.599274278	Sum of GTIs [s]
livetime	29444.967565253	Livetime [s]
ontime2	29819.399324059	Sum of GTIs [s]
ontime3	29819.235183954	Sum of GTIs [s]
ontime5	29822.558234274	Sum of GTIs [s]
ontime6	29822.517194271	Sum of GTIs [s]
ontime7	29822.599274278	Sum of GTIs [s]
ontime8	29819.194143951	Sum of GTIs [s]
l2events	285930	Number of level 2 events



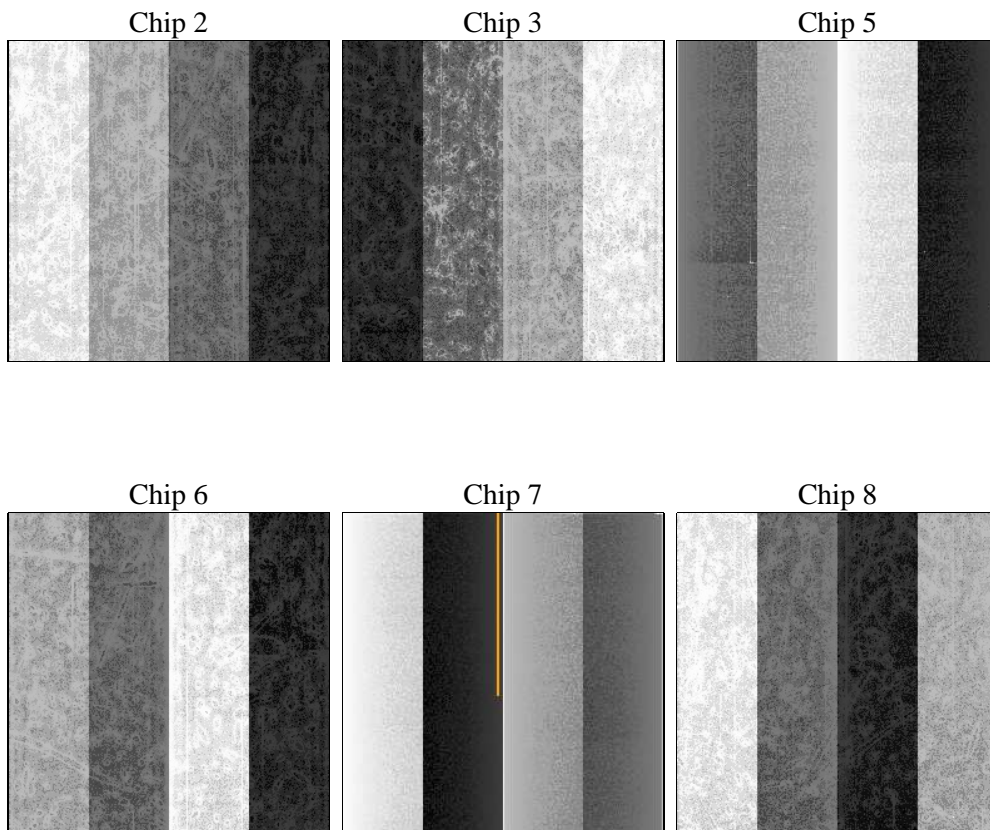
2 OBI

2.1 OBI

2.1.1 Images



2.1.2 Bias



2.1.3 Parameters

obi_num	0	Obi number	sched_exp_time	29856.685000	[s] Scheduled observation exposure time
ascdsver	10.3	Processing system revision	ontime	29822.599274278	Sum of GTIs [s]
caldbver	4.6.4	 	ontime2	29819.399324059	Sum of GTIs [s]
date	2014-12-01T07:12:47	Date and time of file creation	ontime3	29819.235183954	Sum of GTIs [s]
revision	2	Processing version of data	ontime5	29822.558234274	Sum of GTIs [s]
			ontime6	29822.517194271	Sum of GTIs [s]
			ontime7	29822.599274278	Sum of GTIs [s]
			ontime8	29819.194143951	Sum of GTIs [s]
			l1events	1212487	Number of level 1 events

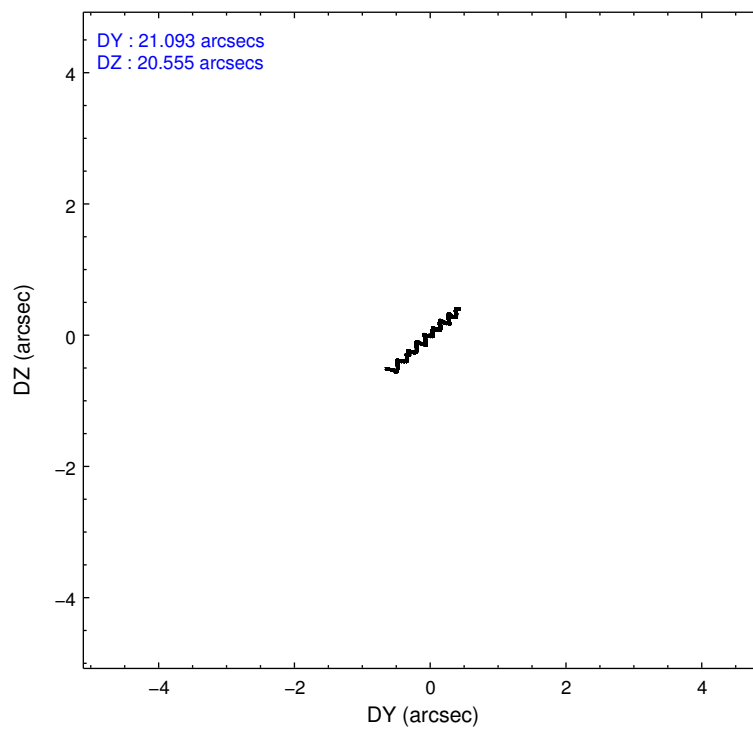
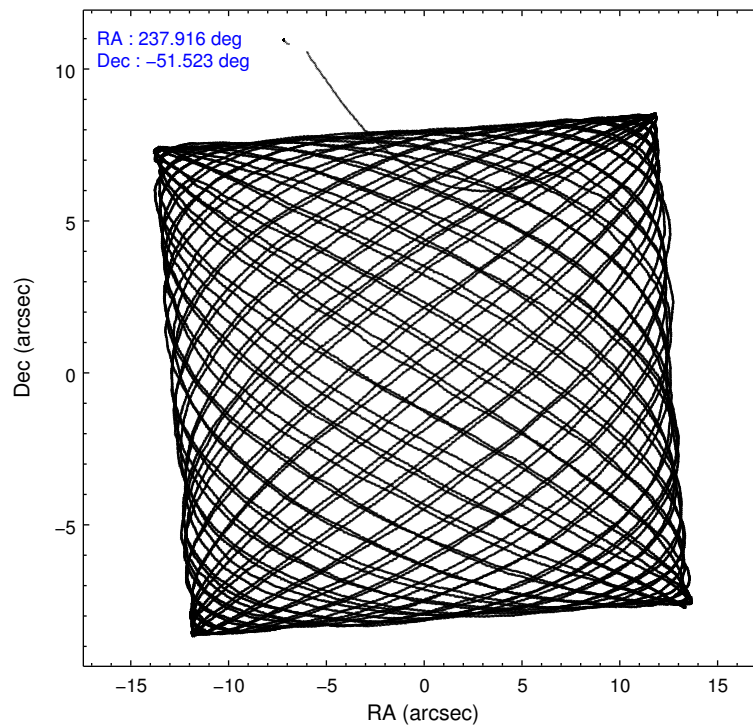
2.1.4 Events

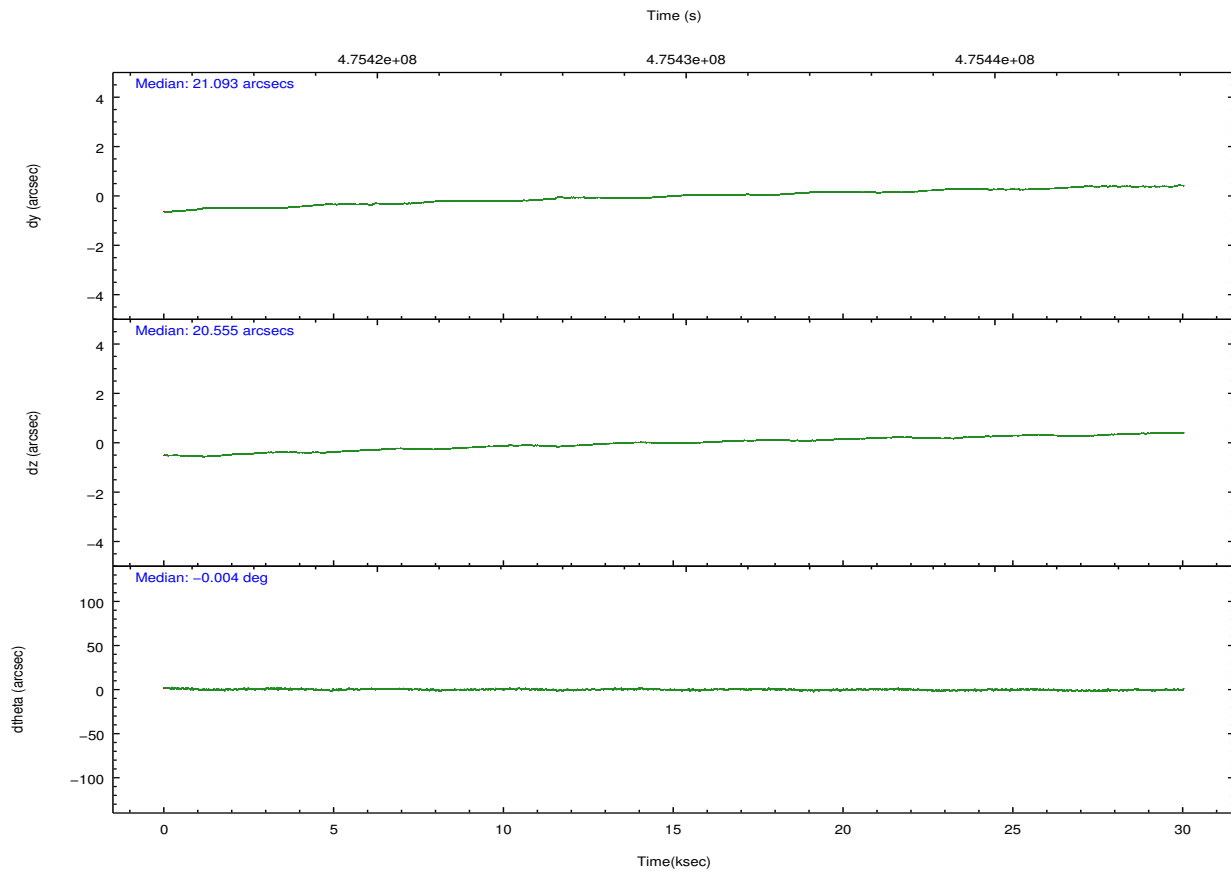
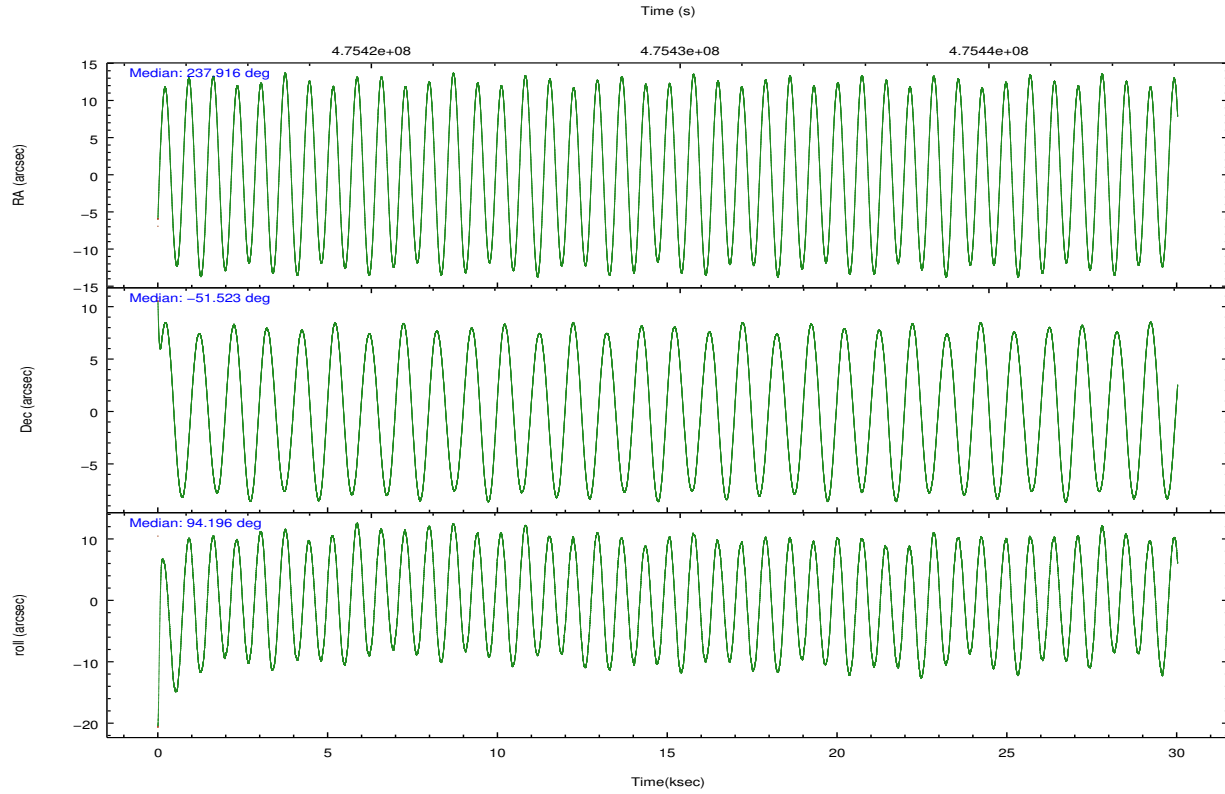
	ccd 2	ccd 3	ccd 5	ccd 6	ccd 7	ccd 8		ccd 2	ccd 3	ccd 5	ccd 6	ccd 7	ccd 8
level 1 events	162744	159399	285091	165576	219663	220014	grade 0 events	6507	6167	17221	6685	8576	17843
rejected events	144194	141781	146503	146180	123075	159914		3%	3%	6%	4%	3%	8%
rejected %	88%	88%	51%	88%	56%	72%	grade 1 events	108	100	462	79	285	181
								0%	0%	0%	0%	0%	0%
							grade 2 events	4567	3971	42828	4355	19774	13792
								2%	2%	15%	2%	9%	6%
							grade 3 events	1883	1890	4437	1942	8388	6363
								1%	1%	1%	1%	3%	2%
							grade 4 events	1912	1939	4377	1903	8232	6151
								1%	1%	1%	1%	3%	2%
							grade 5 events	6941	8355	20966	8289	22985	12223
								4%	5%	7%	5%	10%	5%
							grade 6 events	3681	3653	69741	4514	51627	15953
								2%	2%	24%	2%	23%	7%
							grade 7 events	137145	133324	125059	137809	99796	147508
								84%	83%	43%	83%	45%	67%

2.2 Compared Parameters

Parameter	Planned	Actual	Parameter	Planned	Actual
Instrument	ACIS	ACIS	Obspar format version number	7	7
Detector	ACIS-235678	ACIS-235678	Obspar file type	PREDICTED	ACTUAL
Grating	NONE	NONE	Obspar update status	NONE	UPDATED
Data mode	VFAINT	VFAINT	CCD I0 on	N	N
Observation mode	POINTING	POINTING	CCD I1 on	N	N
[deg] Pointing RA	237.941346	237.916160203592	CCD I2 on	O3	Y
[deg] Pointing Dec	-51.545583	-51.523172413374	CCD I3 on	O2	Y
[deg] Pointing Roll	94.063430	94.20032756927715	CCD S0 on	N	N
[mm] SIM focus pos	-0.684267	-0.6828225247311905	CCD S1 on	O1	Y
[mm] SIM defocus	0	0.001444936568705701	CCD S2 on	Y	Y
[mm] SIM translation stage pos	-190.132523	-190.1400660498719	CCD S3 on	Y	Y
[mm] SIM translation stage offset	0	0.00754346686406393	CCD S4 on	Y	Y
[s] Observation start time (MET)	475414766.184000	475413781.93807	CCD S5 on	N	N
Observation start date	2013-01-24T11:38:19	2013-01-24T11:23:01	Number of optional ACIS chips dropped	0	0
[s] Observation end time (MET)	475444623.184000	475444848.66481	On-chip summing requested	N	N
Observation end date	2013-01-24T19:55:56	2013-01-24T20:00:48	Subarray requested	NONE	NONE
Read mode	TIMED	TIMED	Alternating exposures requested	N	N
			[s] Primary exposure time	0.000000	3.2

2.3 Aspect





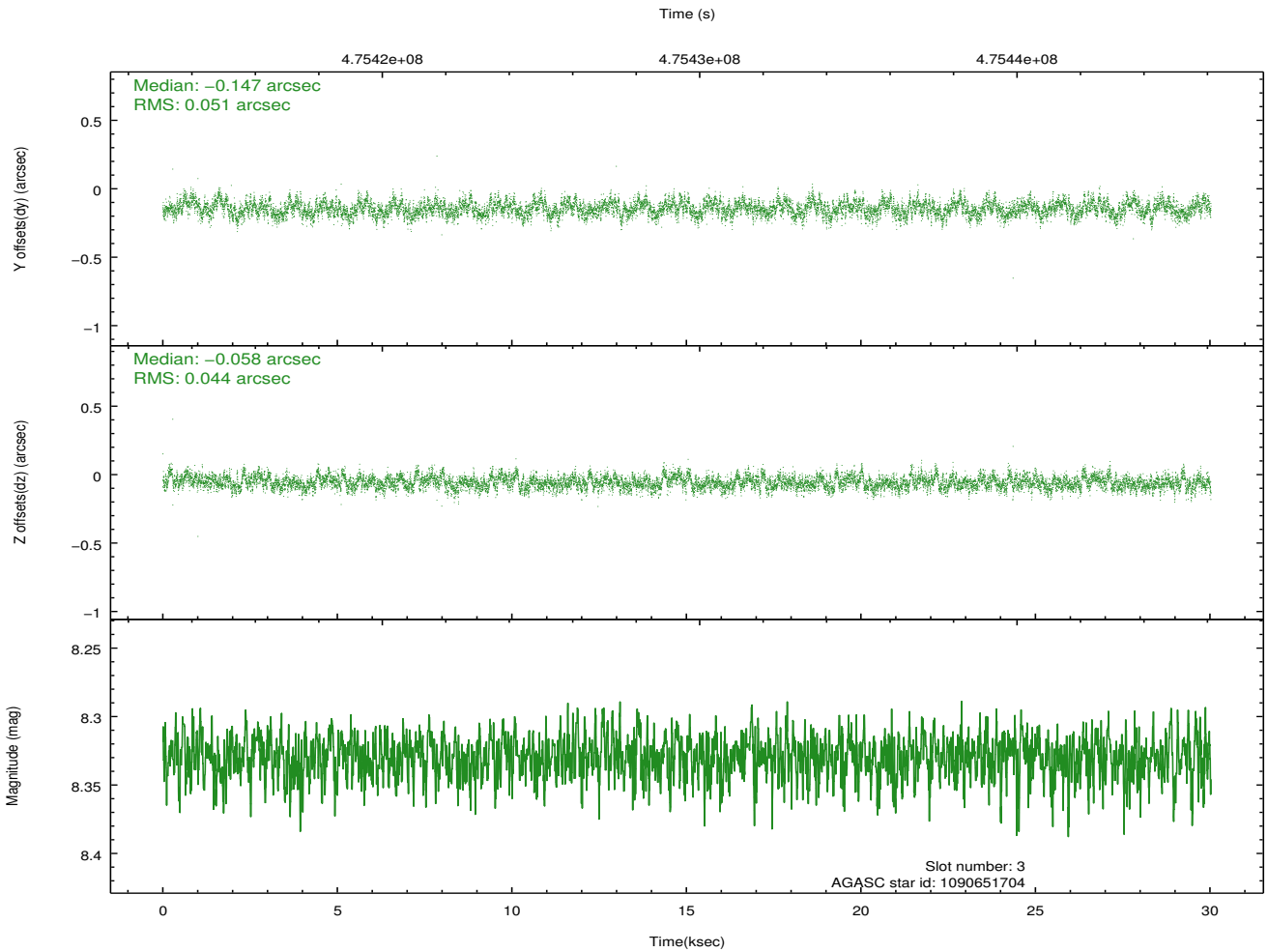
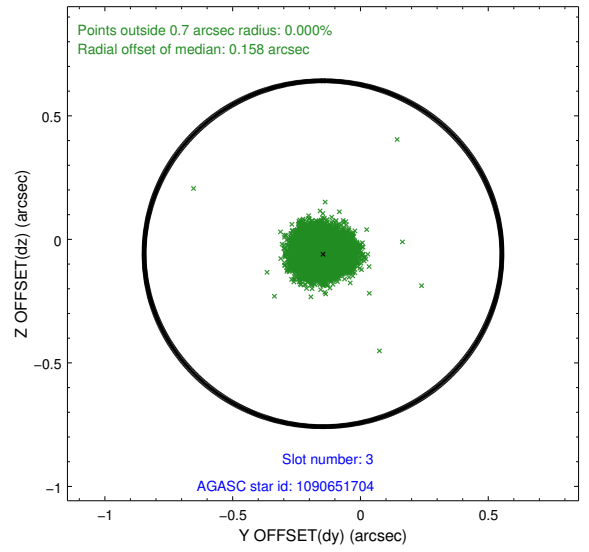
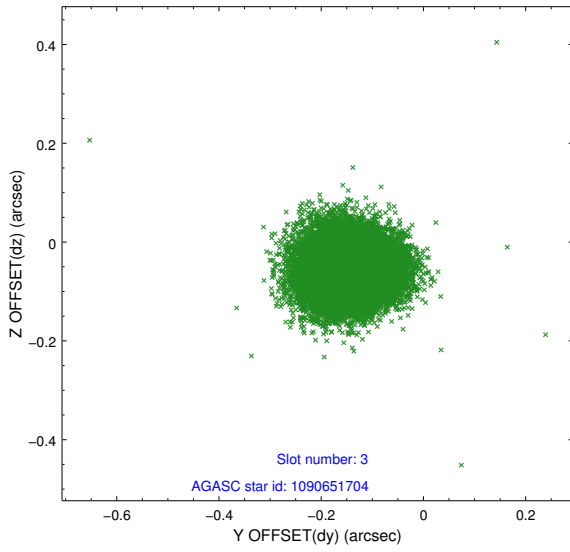
Slot Statistics

slot	status	used	id	mag	n_pts	med_dy	med_dz	dr1	dr2	ra	dec	mean_y	mean_z
0	FID		ACIS-S-1	7.00	7324	0.122	-0.052	0.021	0.036	0.000000	0.000000	921.91	-1737.76
1	FID		ACIS-S-2	6.93	7323	-0.134	-0.022	0.010	0.018	0.000000	0.000000	-774.21	-1742.31
2	FID		ACIS-S-6	7.14	7324	-0.009	0.078	0.016	0.026	0.000000	0.000000	387.48	803.64
3	GUIDE	used	1090651704	8.33	14644	-0.147	-0.058	0.071	0.114	238.027443	-51.139587	1444.14	-297.19
4	GUIDE	used	1090655344	8.73	14623	-0.045	-0.321	0.079	0.126	237.811789	-51.788692	-852.79	349.95
5	GUIDE	used	1090661432	7.76	14642	0.028	0.293	0.070	0.114	238.912296	-51.765626	-957.54	-2099.90
6	GUIDE	used	1090658648	8.93	14631	-0.029	-0.217	0.107	0.162	237.271492	-52.037268	-1667.32	1605.42
7	GUIDE	used	1090660568	8.46	14558	0.188	0.303	0.069	0.111	238.671901	-52.092644	-2086.66	-1471.16

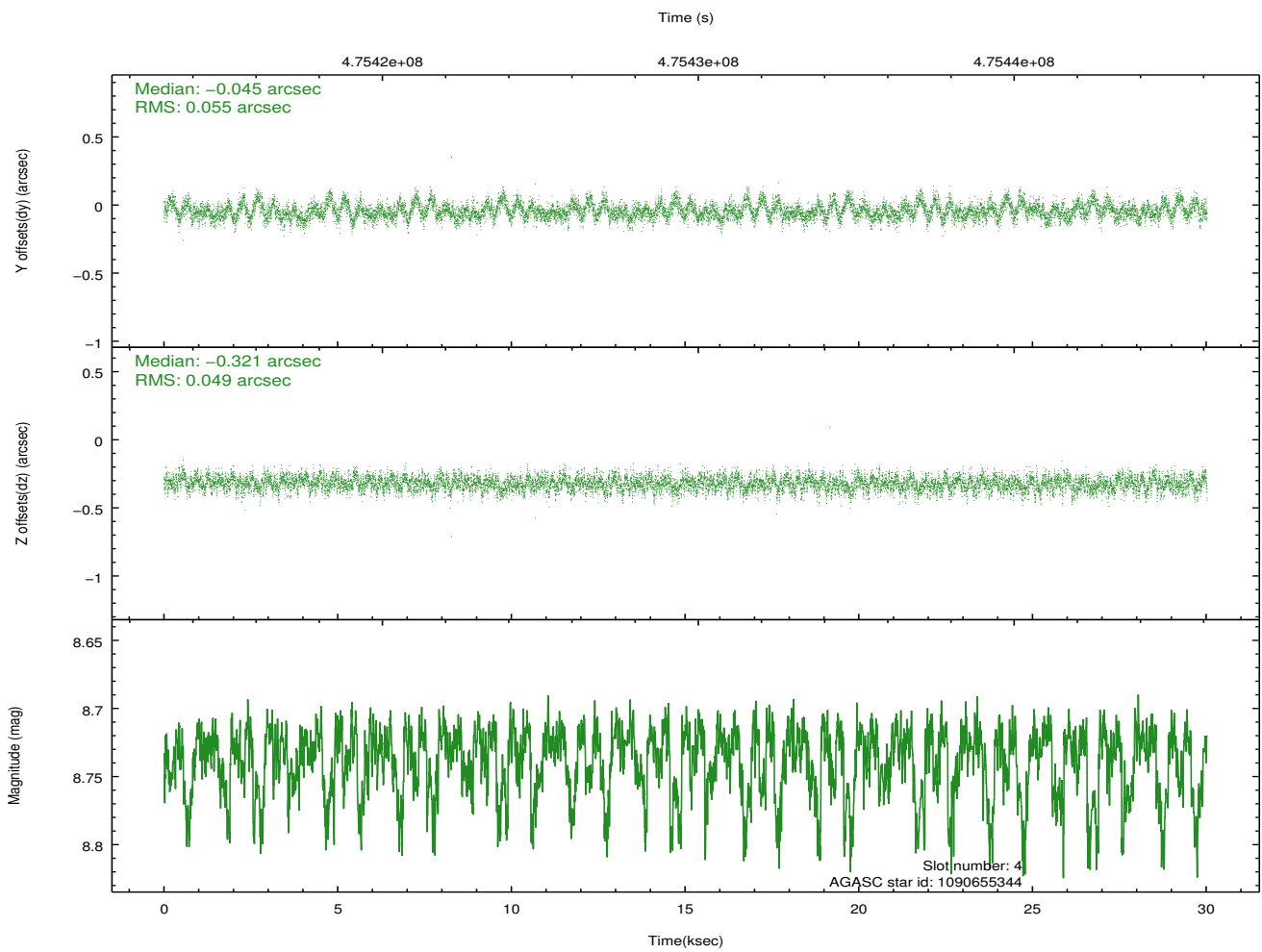
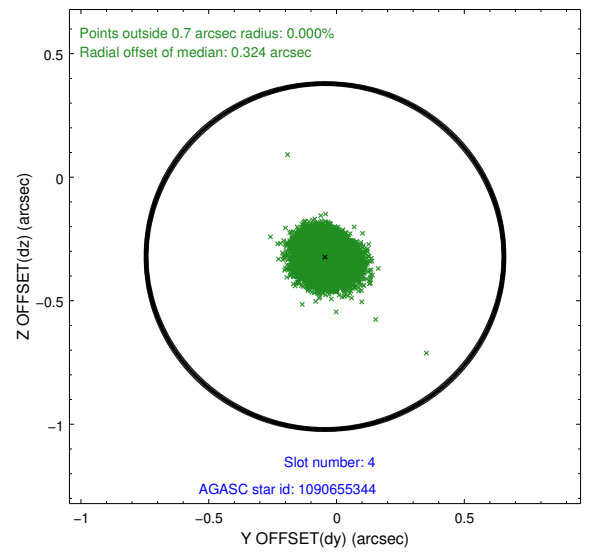
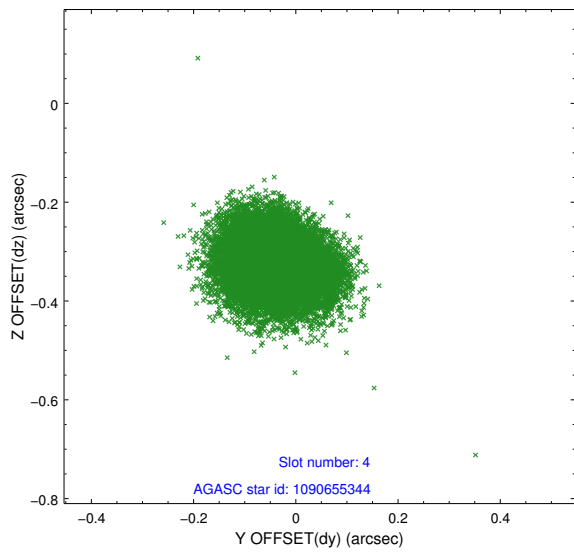
∞

2.4 Star Slots

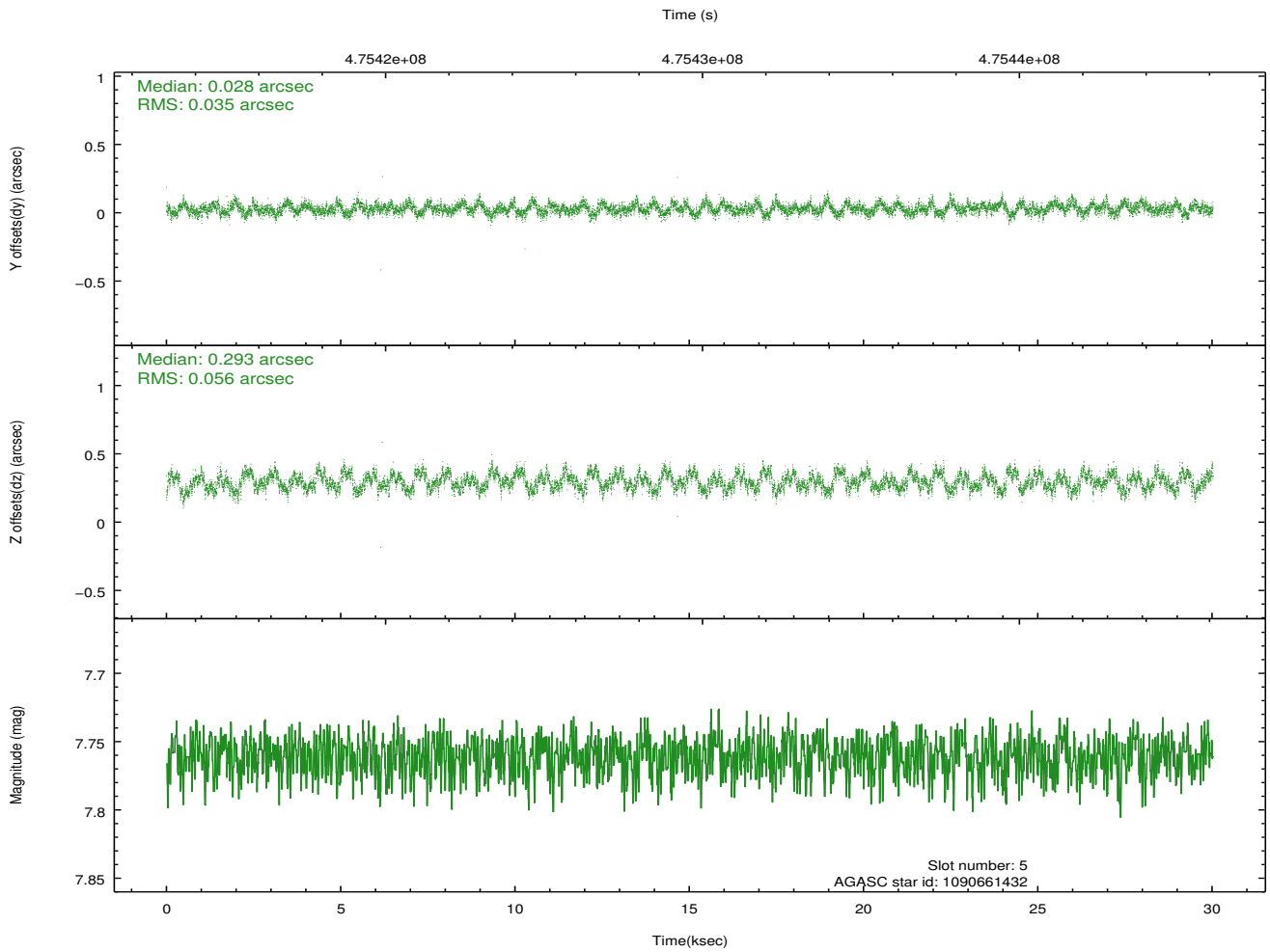
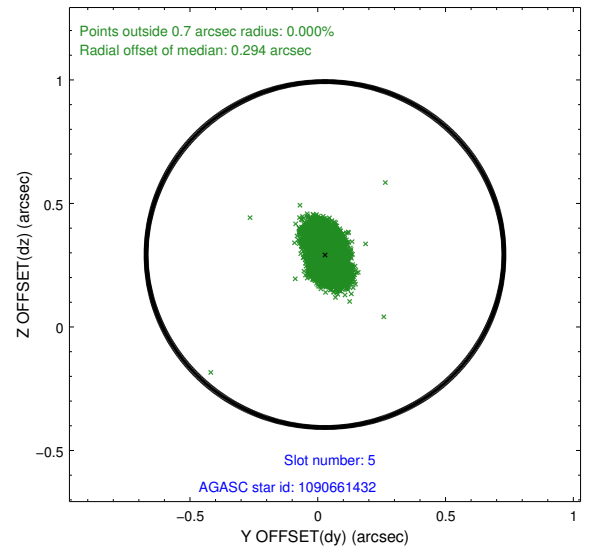
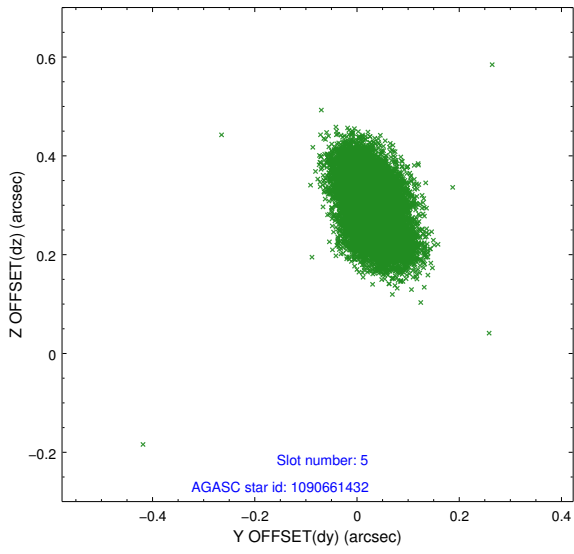
2.4.1 Slot 3



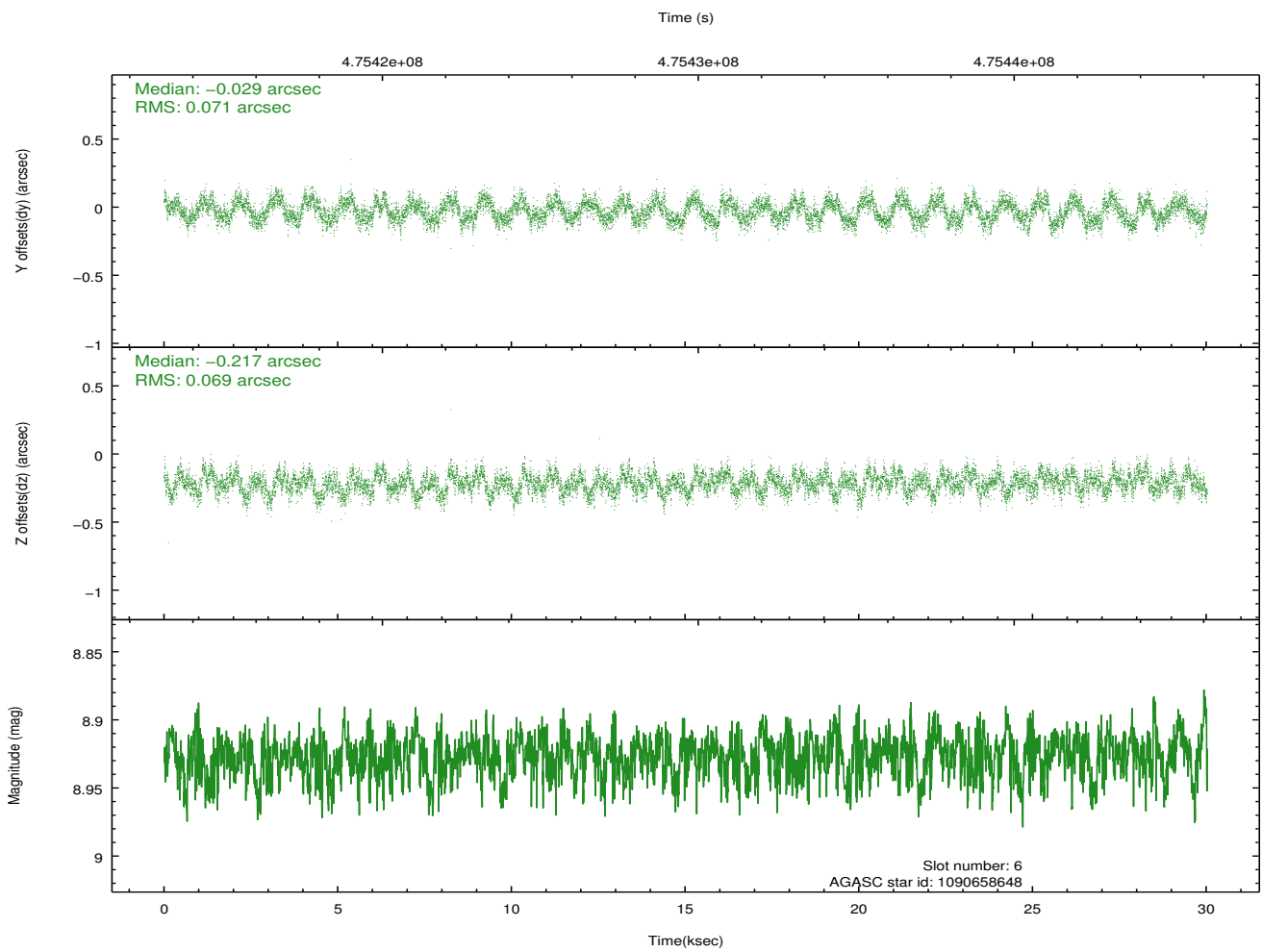
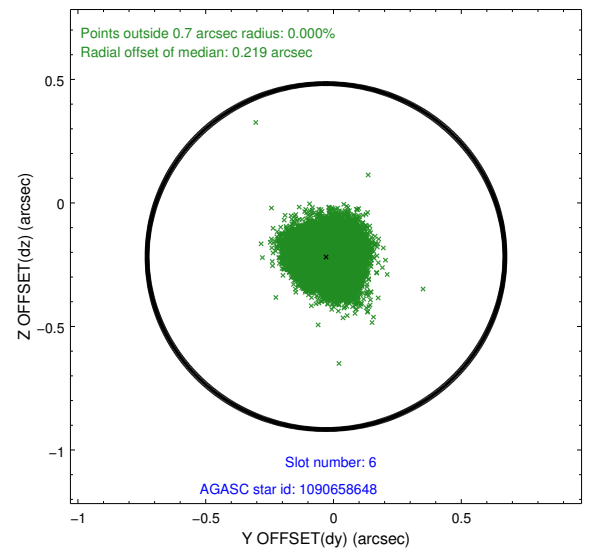
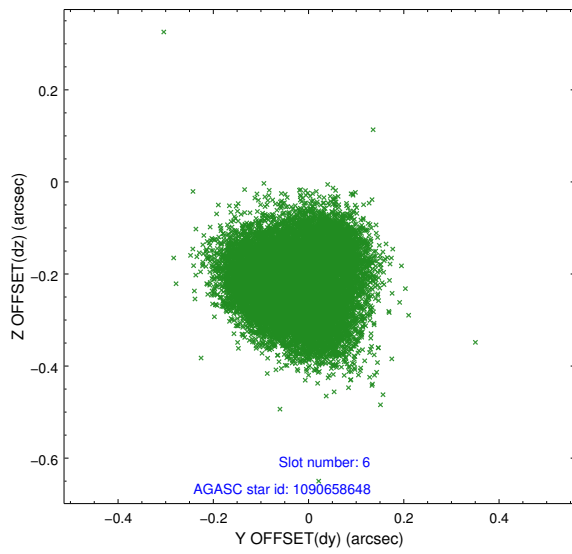
2.4.2 Slot 4



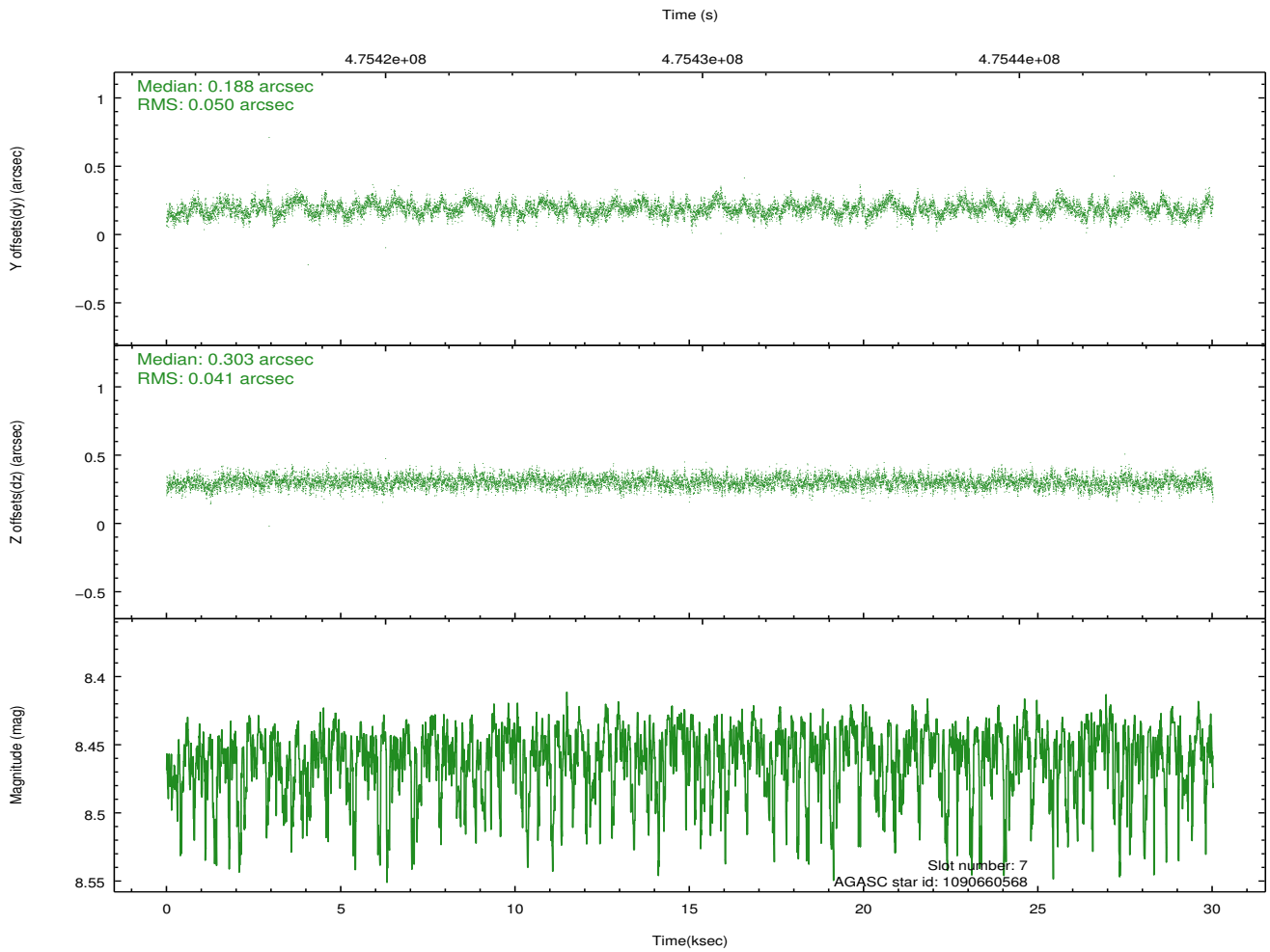
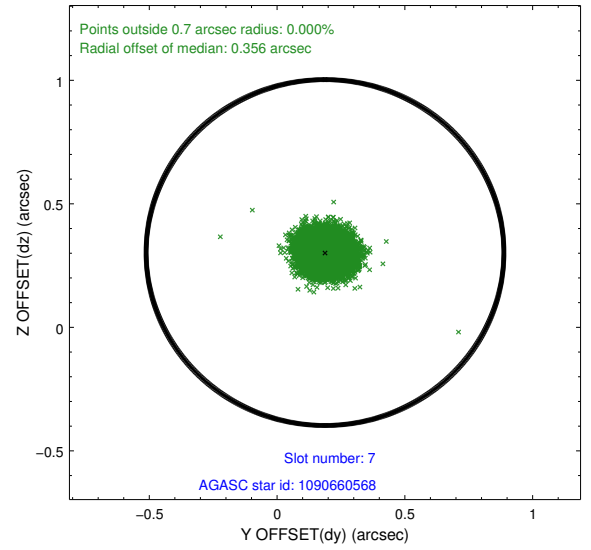
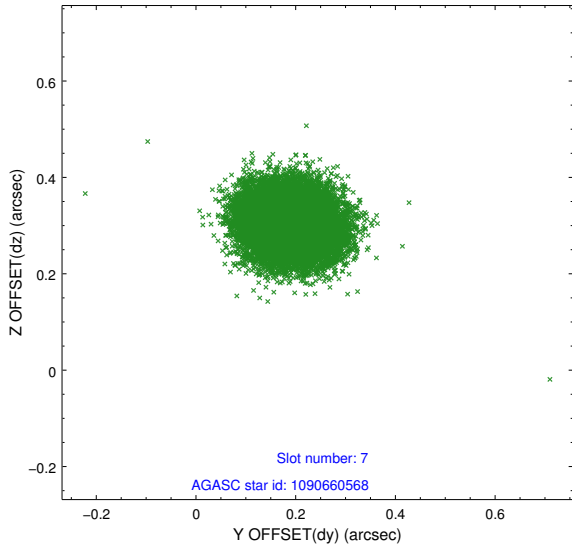
2.4.3 Slot 5



2.4.4 Slot 6

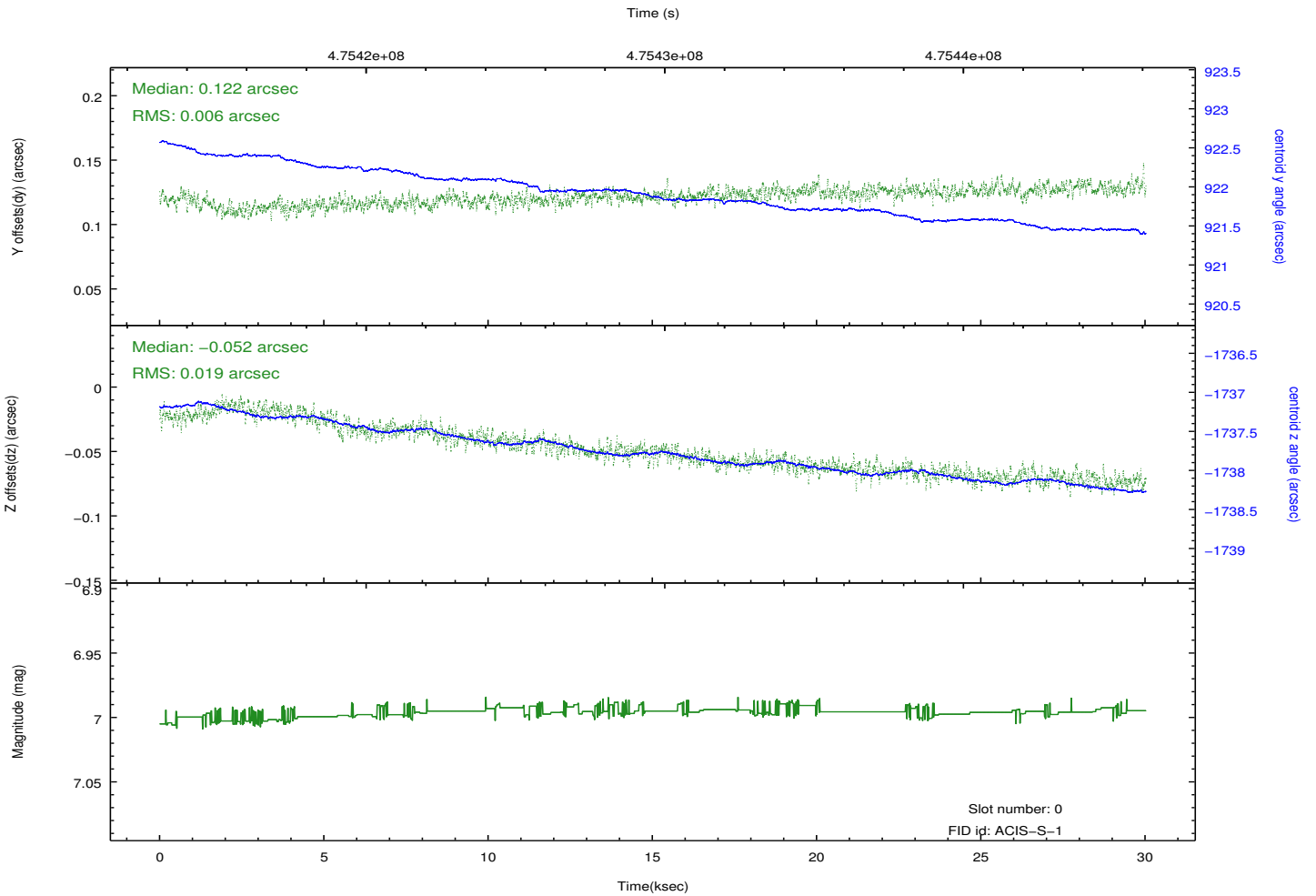
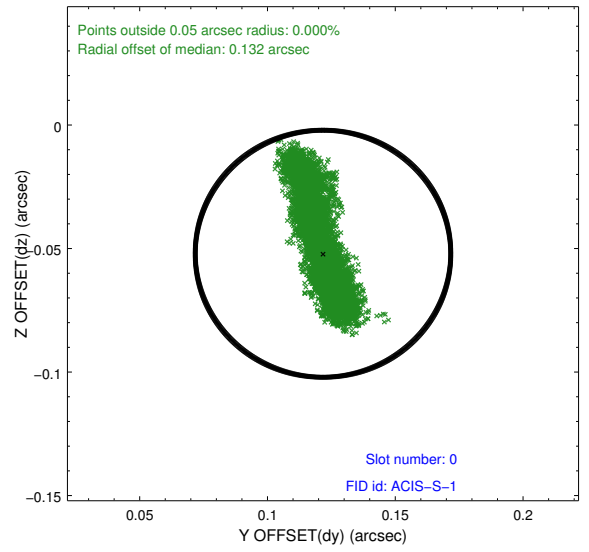
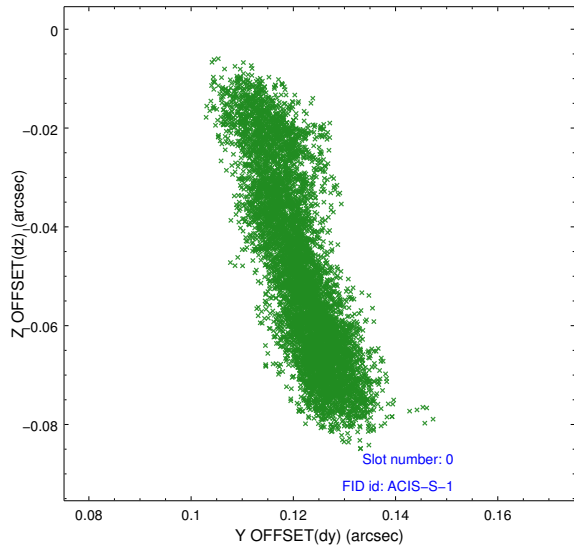


2.4.5 Slot 7

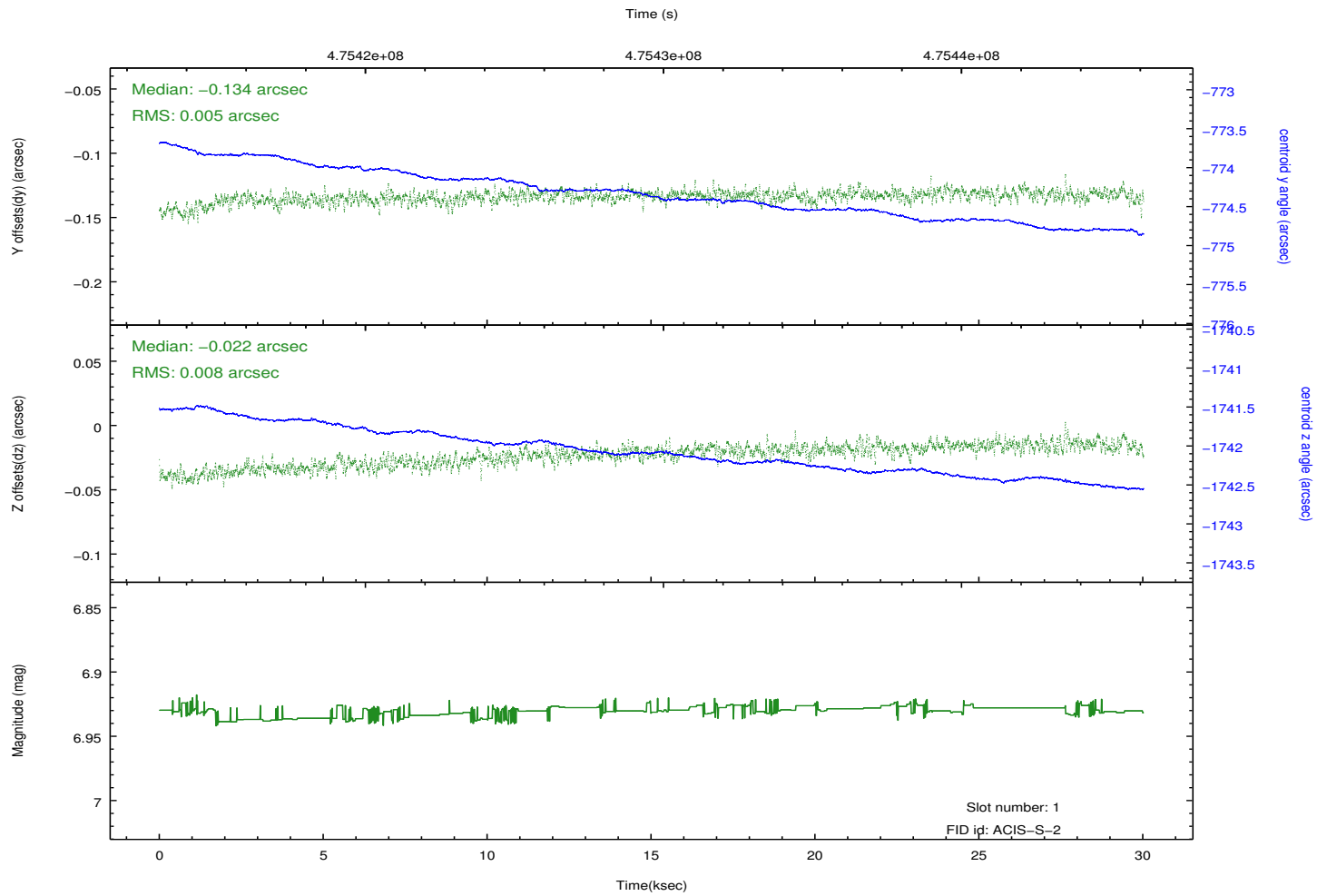
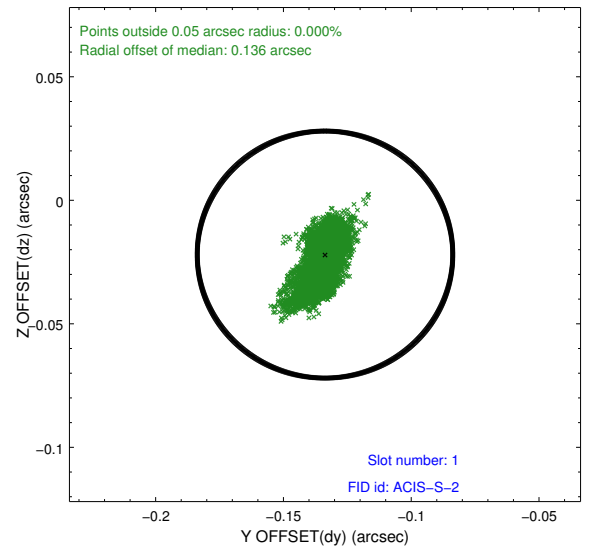
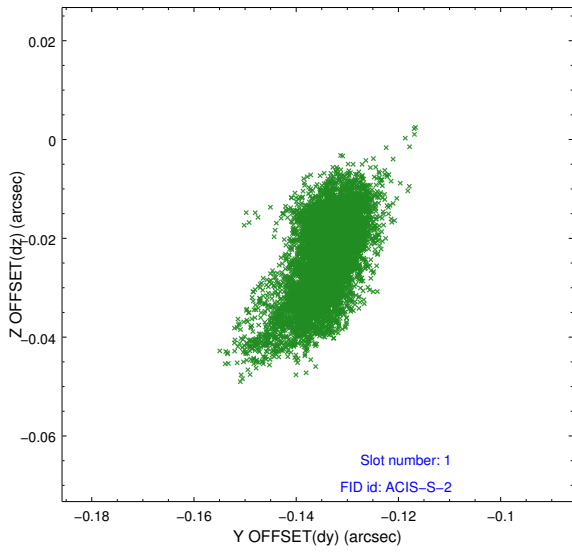


2.5 FID Slots

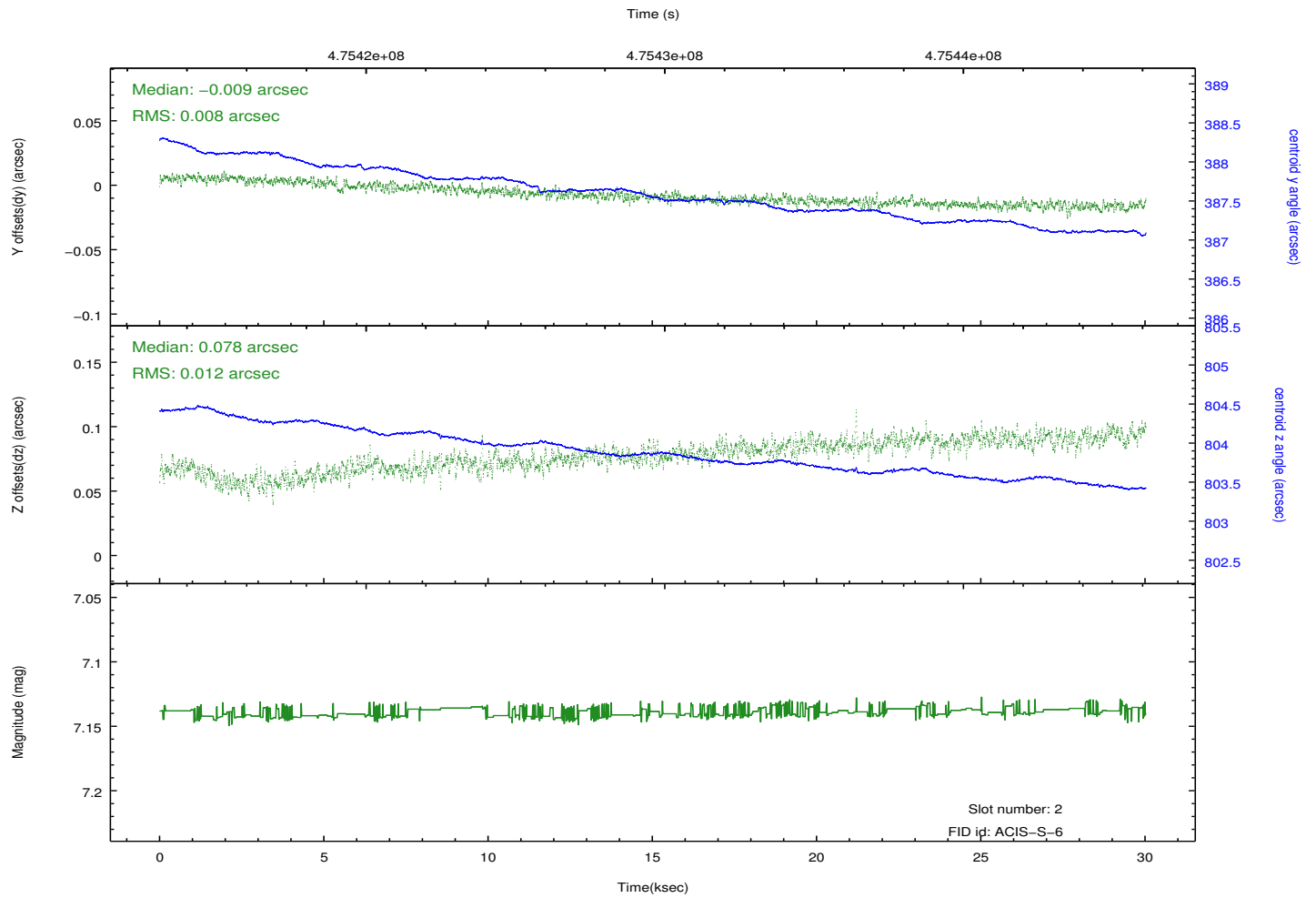
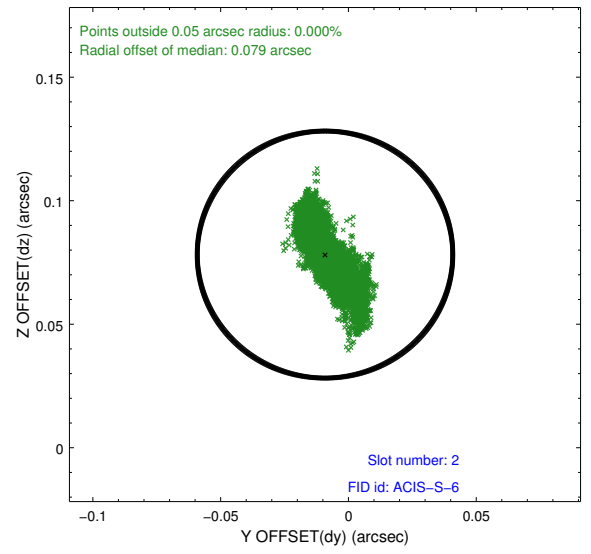
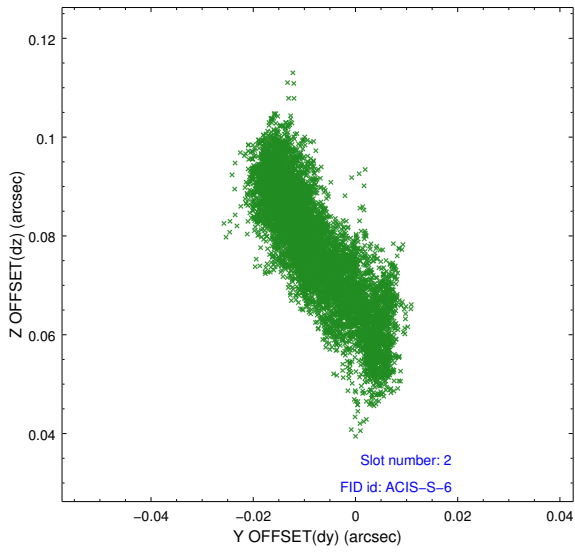
2.5.1 Slot 0



2.5.2 Slot 1



2.5.3 Slot 2



A Summary

A.1 Status

V&V Scientist	Beth Sundheim
V&V Date (YYYY-MM-DD)	2014.12.08
V&V Edition	1
V&V Disposition and Status	OK
V&V Charge Time	29.822599274278

A.2 Comments

These data have been reprocessed with new aspect alignment calibration files that correct small mean offsets (up to 0.4 arcsecs) and improve overall astrometric accuracy. The new calibration was determined using data from the time period being reprocessed and was performed using cross-correlation of X-ray sources with radio and optical counterparts.