

V&V Reference Report

L2 ASCDS Version : 8.4.5

Observation 15590 - L2 Version 2
Chandra X-Ray Center

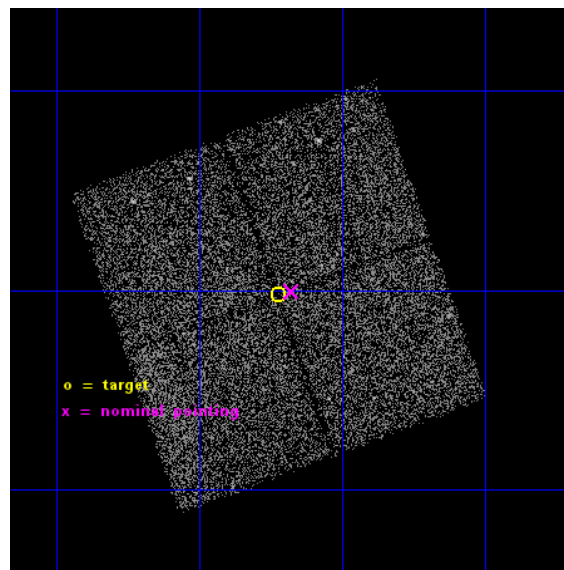
L2 Processing Date : Nov 29 2014

Contents

1	Front	2
2	OBI	3
2.1	OBI	3
2.1.1	Images	3
2.1.2	Bias	3
2.1.3	Parameters	4
2.1.4	Events	4
2.2	Compared Parameters	5
2.3	Aspect	6
2.4	Star Slots	9
2.4.1	Slot 3	9
2.4.2	Slot 4	10
2.4.3	Slot 5	11
2.4.4	Slot 6	12
2.4.5	Slot 7	13
2.5	FID Slots	14
2.5.1	Slot 0	14
2.5.2	Slot 1	15
2.5.3	Slot 2	16
A	Summary	17
A.1	Status	17
A.2	Comments	17

1 Front

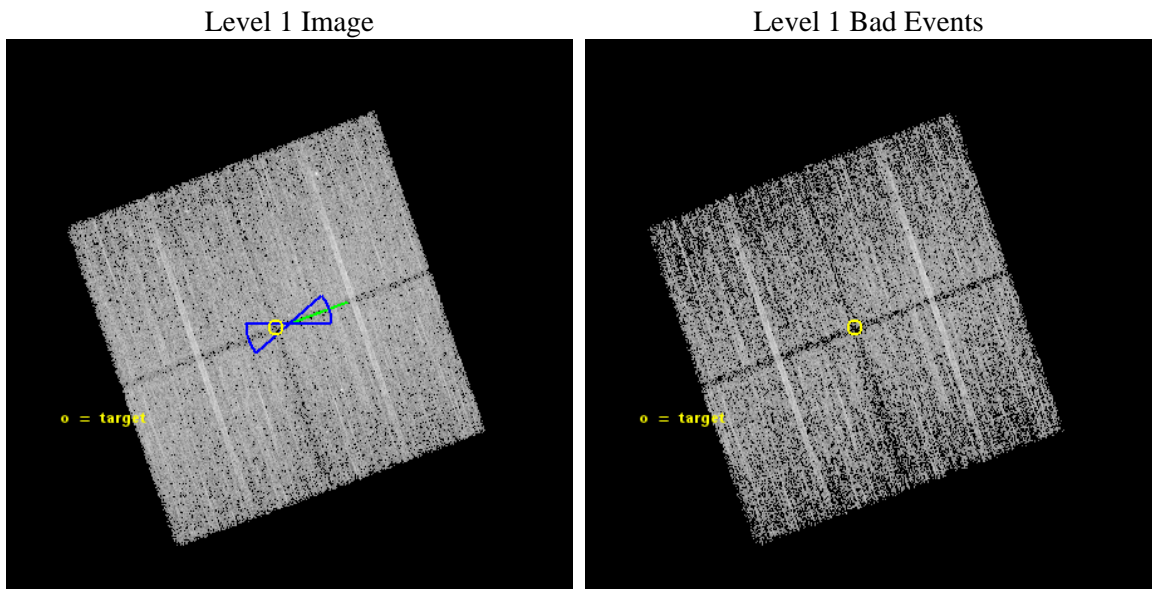
seq_num	901037	Sequence number
obs_id	15590	Observation id
title	The COSMOS Legacy Survey	Proposal title
observer	Dr Francesca Civano	Principal investigator
object	COSMOS Legacy	Source name
dtcycle	0	
cycle	P	events from which exps? Prim/Second/Both
ra_targ	150.55584	Observer's specified target RA [deg]
dec_targ	2.496472	Observer's specified target Dec [deg]
ra_nom	150.54440251196	Nominal RA [deg]
dec_nom	2.4990947136473	Nominal Dec [deg]
roll_nom	70.209184911437	Nominal Roll [deg]
revision	2	Processing version of data
ontime	15090.800116062	Sum of GTIs [s]
livetime	14893.62770286	Livetime [s]
ontime0	15090.800116062	Sum of GTIs [s]
ontime1	15090.800116062	Sum of GTIs [s]
ontime2	15090.800116062	Sum of GTIs [s]
ontime3	15090.800116062	Sum of GTIs [s]
l2events	31905	Number of level 2 events



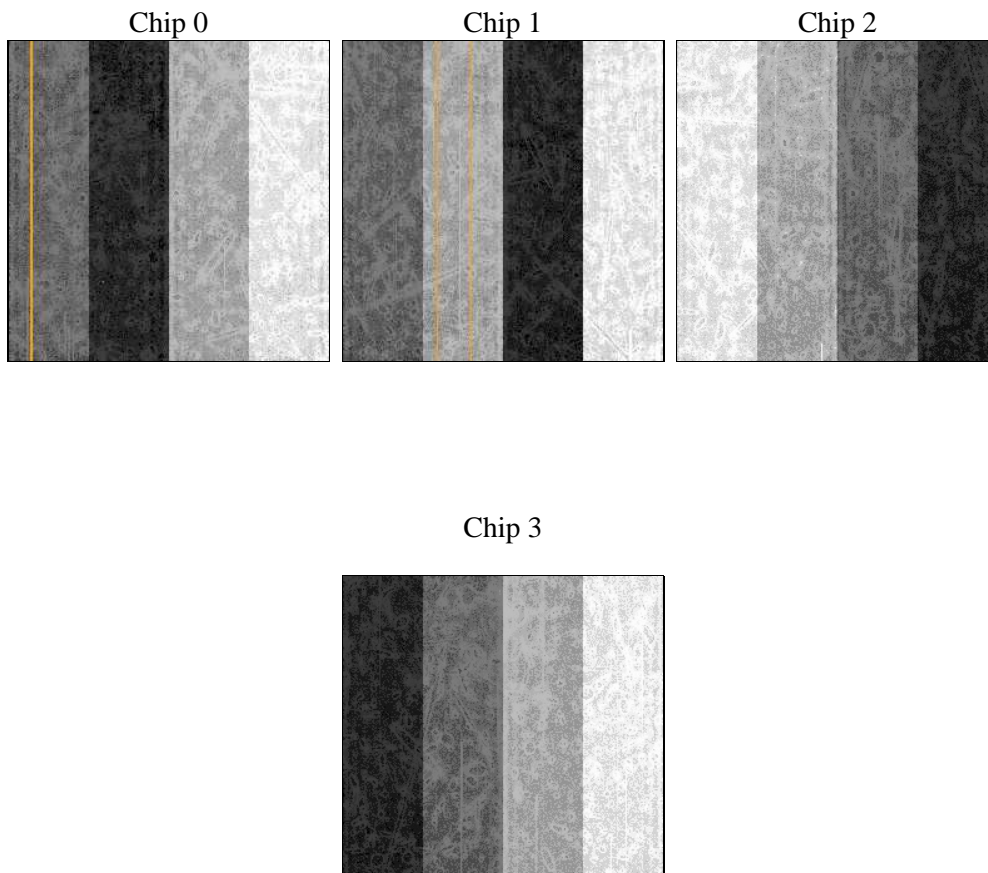
2 OBI

2.1 OBI

2.1.1 Images



2.1.2 Bias



2.1.3 Parameters

obi_num	0	Obi number	sched_exp_time	15000.000000	[s] Scheduled observation exposure time
ascdsver	10.3	Processing system revision	ontime	15090.800116062	Sum of GTIs [s]
caldsver	4.6.4	 	ontime0	15090.800116062	Sum of GTIs [s]
date	2014-11-29T20:35:57	Date and time of file creation	ontime1	15090.800116062	Sum of GTIs [s]
revision	2	Processing version of data	ontime2	15090.800116062	Sum of GTIs [s]
			ontime3	15090.800116062	Sum of GTIs [s]
			l1events	294037	Number of level 1 events

2.1.4 Events

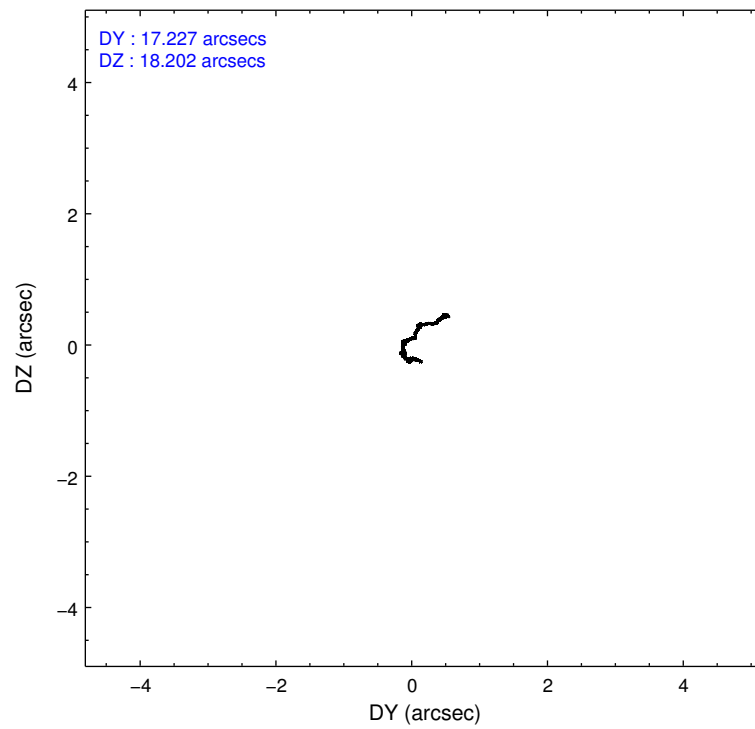
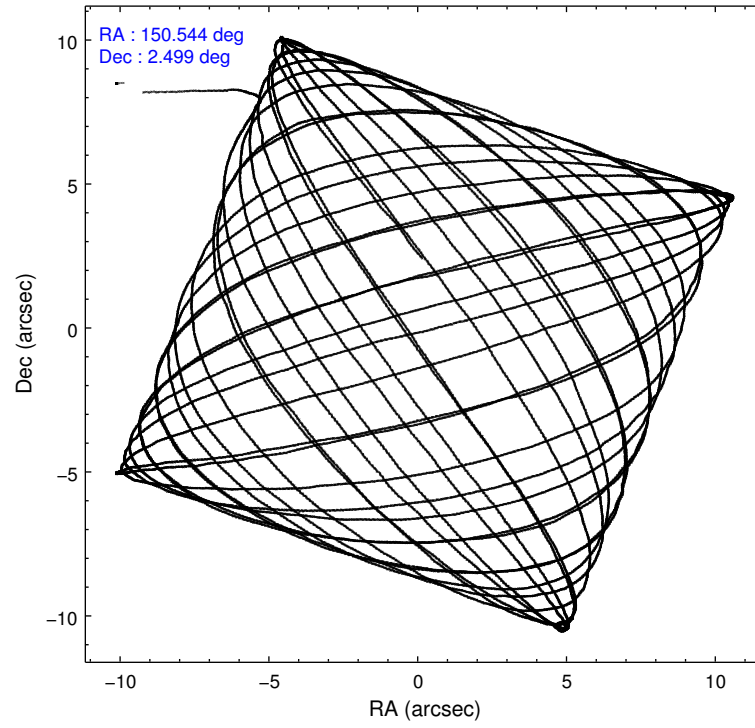
	ccd 0	ccd 1	ccd 2	ccd 3
level 1 events	69922	73889	76681	73545
rejected events	60436	63610	67158	64603
rejected %	86%	86%	87%	87%

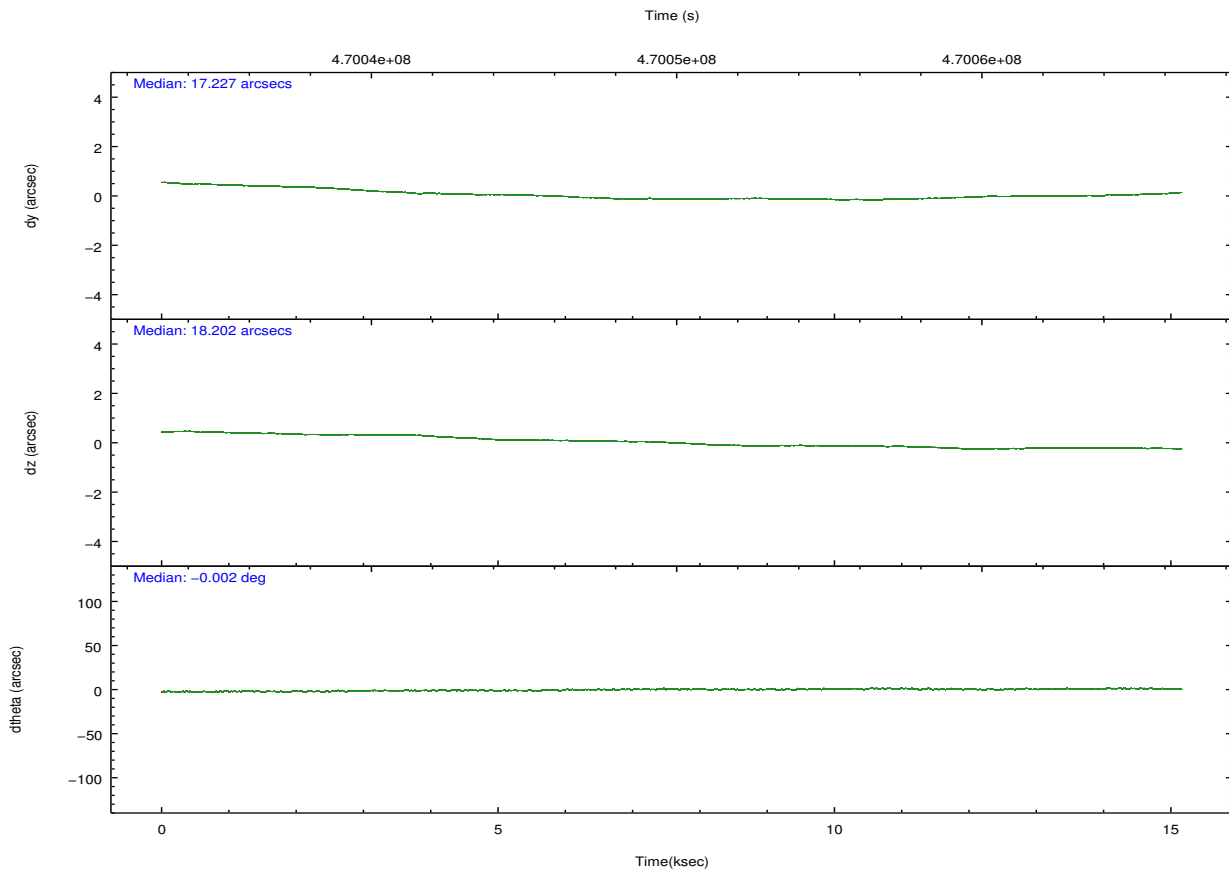
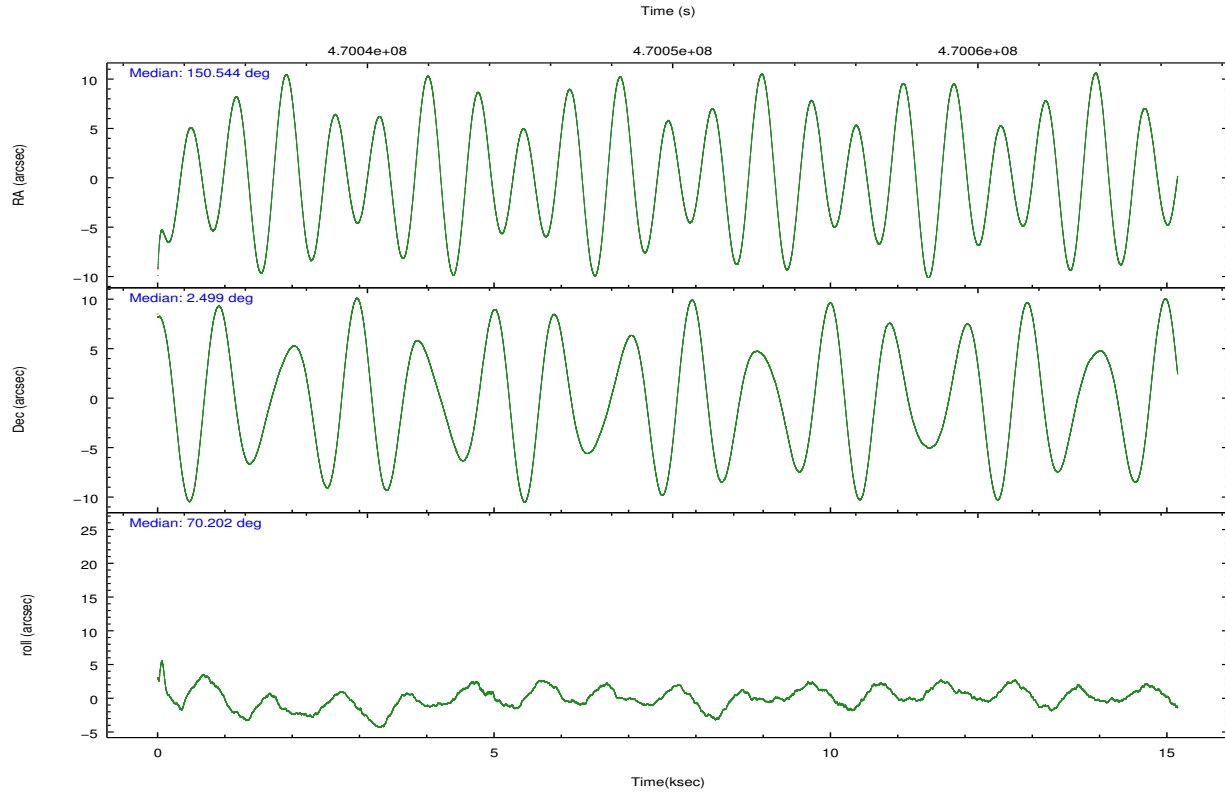
	ccd 0	ccd 1	ccd 2	ccd 3
grade 0 events	3375	3588	3577	3223
	4%	4%	4%	4%
grade 1 events	27	43	50	36
	0%	0%	0%	0%
grade 2 events	2293	2428	2275	1961
	3%	3%	2%	2%
grade 3 events	1057	978	939	932
	1%	1%	1%	1%
grade 4 events	884	1050	929	956
	1%	1%	1%	1%
grade 5 events	3545	3837	3555	4074
	5%	5%	4%	5%
grade 6 events	1878	2236	1803	1871
	2%	3%	2%	2%
grade 7 events	56863	59729	63553	60492
	81%	80%	82%	82%

2.2 Compared Parameters

Parameter	Planned	Actual	Parameter	Planned	Actual
Instrument	ACIS	ACIS	Obspar format version number	7	7
Detector	ACIS-0123	ACIS-0123	Obspar file type	PREDICTED	ACTUAL
Grating	NONE	NONE	Obspar update status	NONE	UPDATED
Data mode	VFAINT	VFAINT	Number of optional ACIS chips dropped	0	0
Observation mode	POINTING	POINTING	On-chip summing requested	N	N
[deg] Pointing RA	150.549418	150.5444025119635	Subarray requested	NONE	NONE
[deg] Pointing Dec	2.472018	2.499094713647322	Alternating exposures requested	N	N
[deg] Pointing Roll	70.000285	70.20918491143739	[s] Primary exposure time	0.000000	3.1
[deg] Roll angle	250.000000	250.000000			
[deg] Roll tolerance	20.000000	20.000000			
Roll constraint allows 180D rotation	Y	Y			
[mm] SIM focus pos	-0.782348	-0.7809083437167272			
[mm] SIM defocus	0	0.001439871863259334			
[mm] SIM translation stage pos	-233.592463	-233.5874344608287			
[mm] SIM translation stage offset	0	-0.005018542100998502			
[s] Observation start time (MET)	470042497.184000	470041605.46125			
Observation start date	2012-11-23T07:20:30	2012-11-23T07:06:45			
[s] Observation end time (MET)	470057497.184000	470058776.26218			
Observation end date	2012-11-23T11:30:30	2012-11-23T11:52:56			
Read mode	TIMED	TIMED			

2.3 Aspect





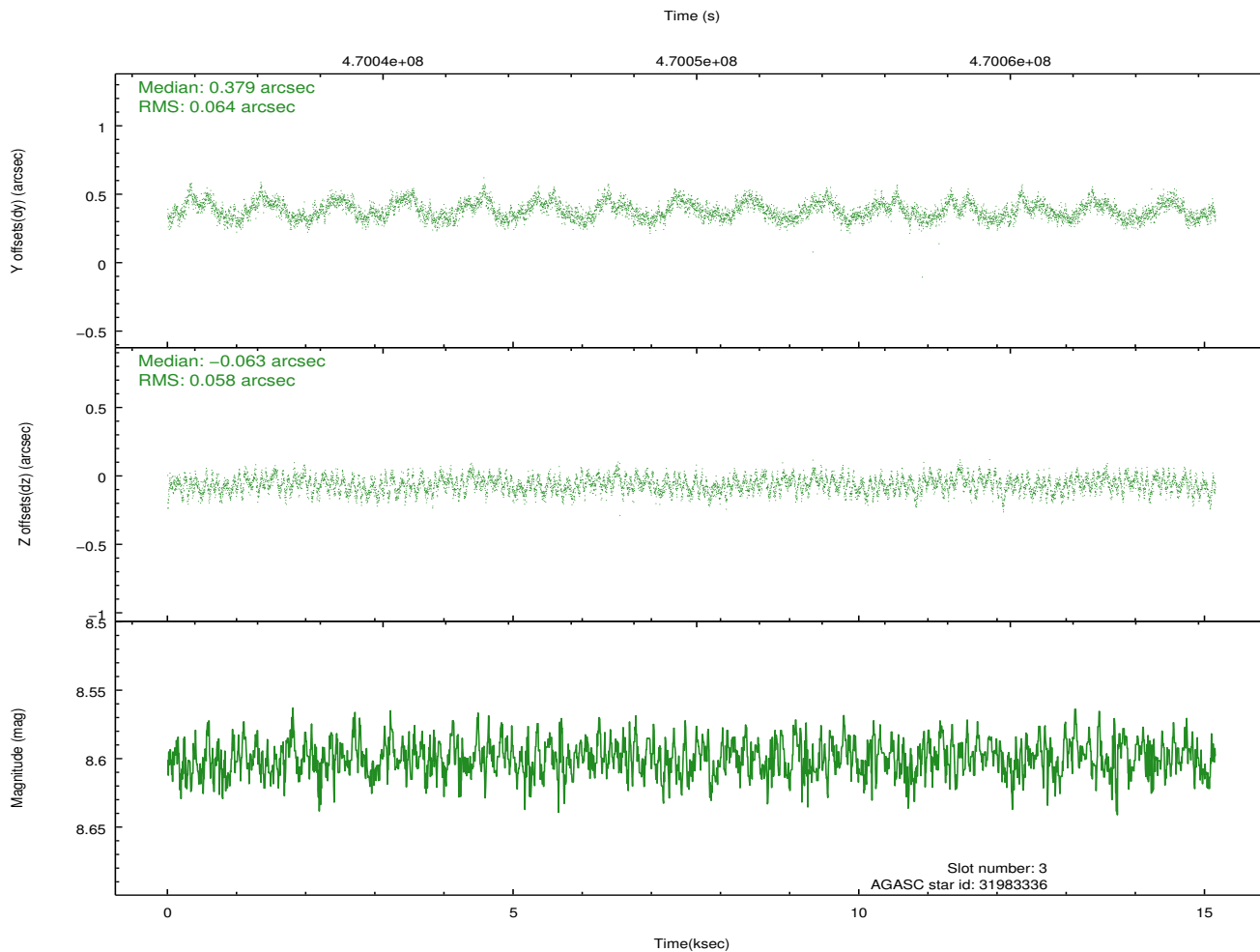
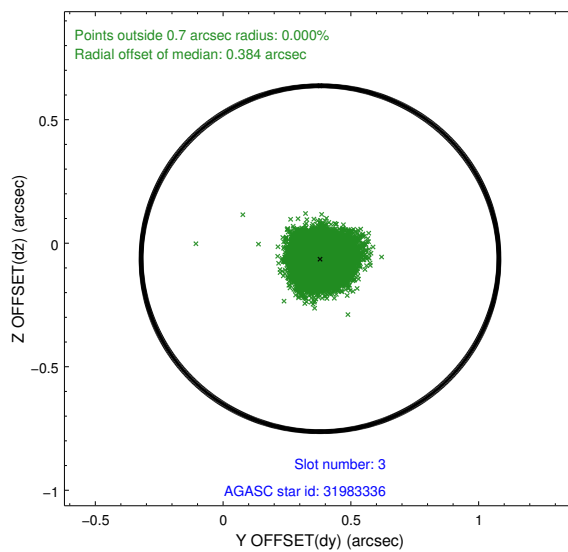
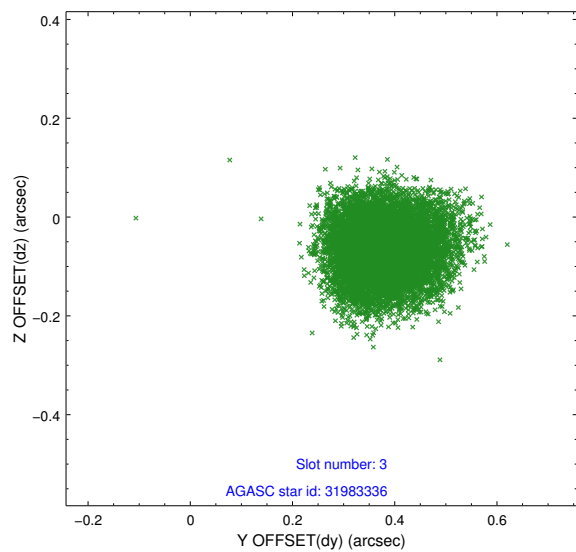
Slot Statistics

slot	status	used	id	mag	n_pts	med_dy	med_dz	dr1	dr2	ra	dec	mean_y	mean_z
0	FID		ACIS-I-1	7.05	3696	0.035	0.034	0.012	0.024	0.000000	0.000000	922.16	-841.88
1	FID		ACIS-I-5	7.05	3697	-0.223	0.046	0.009	0.015	0.000000	0.000000	-1826.06	1055.44
2	FID		ACIS-I-6	7.06	3696	0.095	-0.010	0.010	0.018	0.000000	0.000000	387.42	1700.25
3	GUIDE	used	31983336	8.60	7390	0.379	-0.063	0.094	0.141	150.429924	2.291234	-757.91	181.23
4	GUIDE	used	31985760	8.45	7393	0.097	0.213	0.081	0.128	150.924581	2.094394	-815.60	-1732.85
5	GUIDE	used	31986152	8.99	7387	-0.007	0.014	0.105	0.173	150.840314	2.057585	-1043.91	-1493.47
6	GUIDE	used	32374896	9.22	7390	-0.171	0.235	0.114	0.184	150.682269	2.512794	301.17	-398.81
7	GUIDE	used	32387968	9.18	7384	-0.310	-0.401	0.109	0.171	150.106347	3.119099	1644.48	2293.31

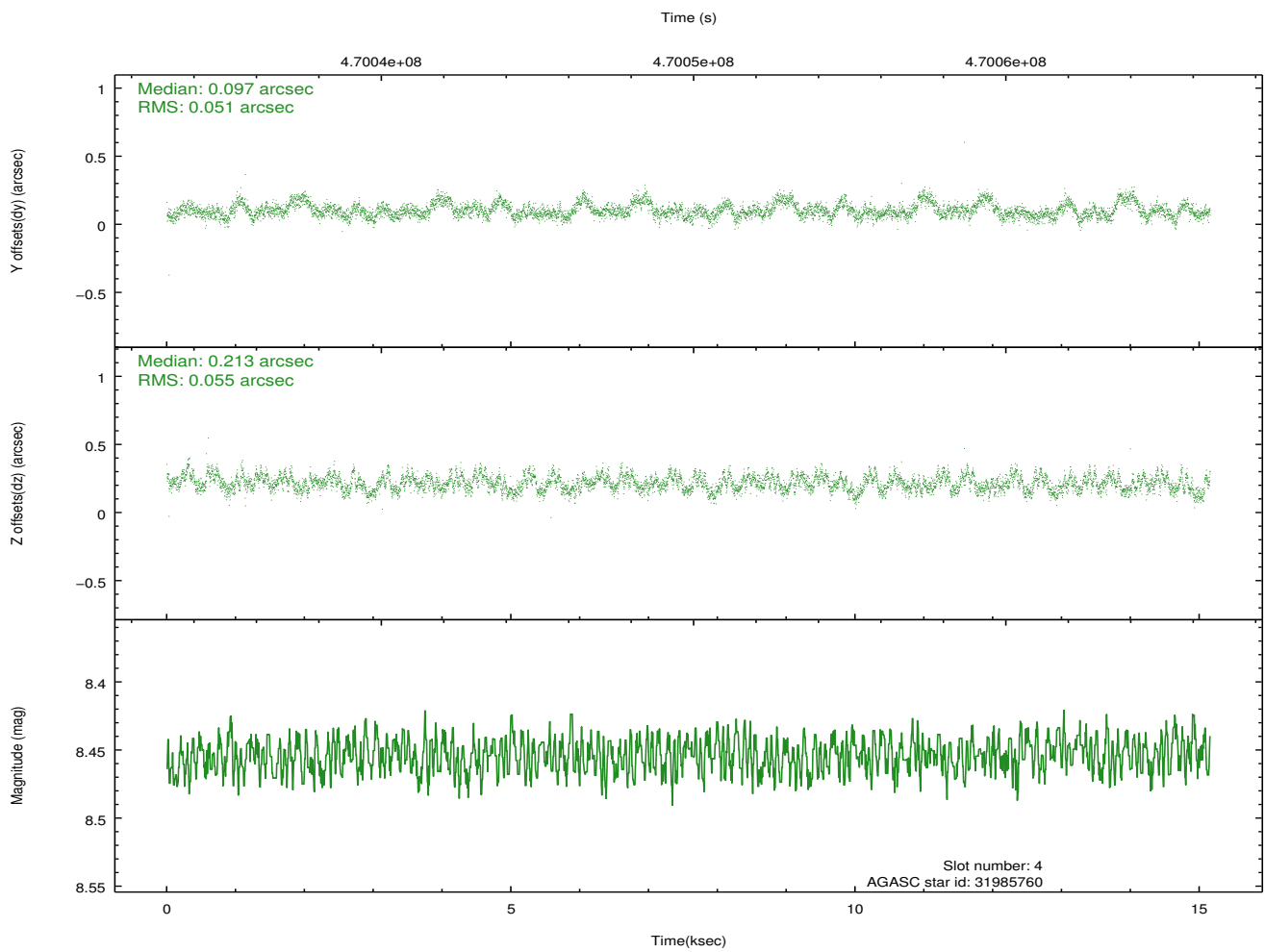
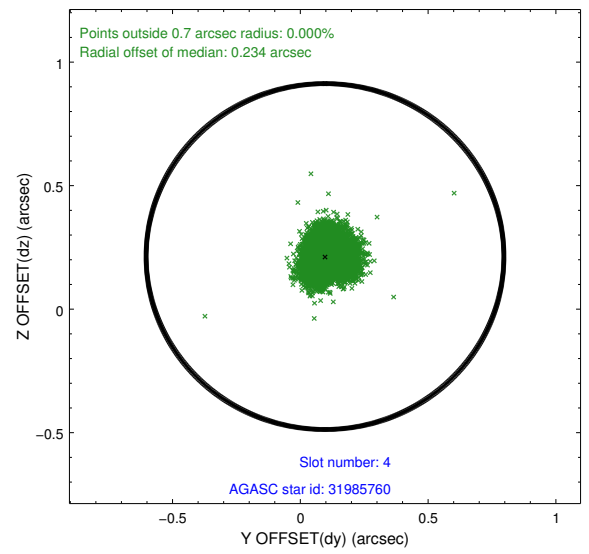
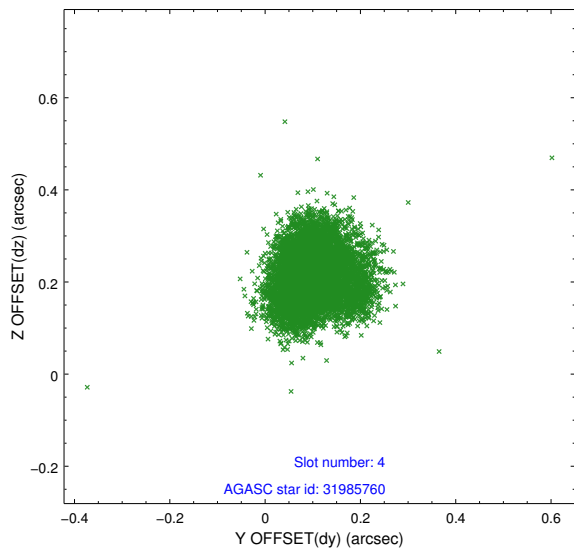
∞

2.4 Star Slots

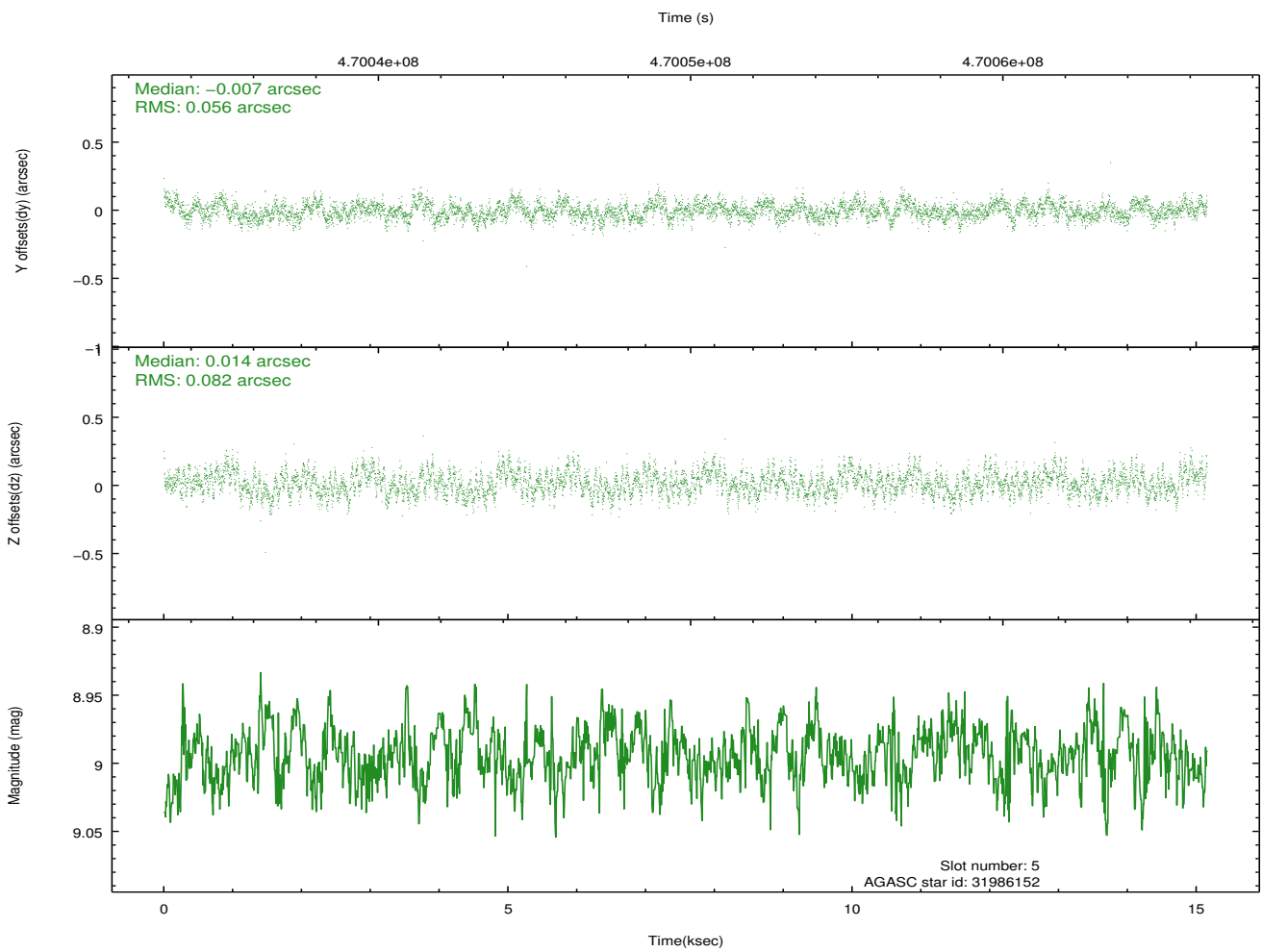
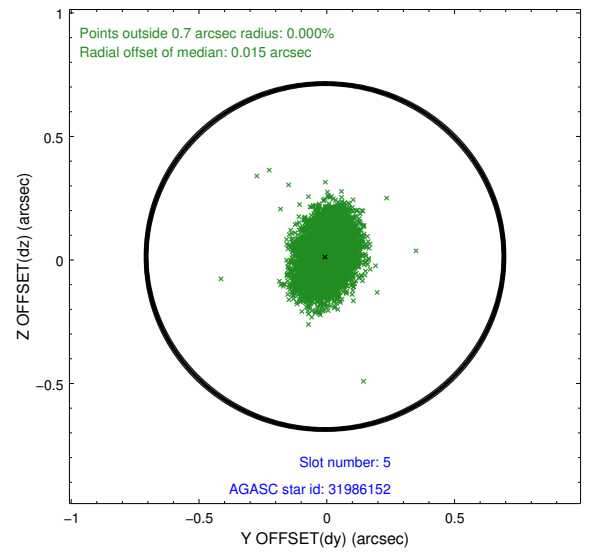
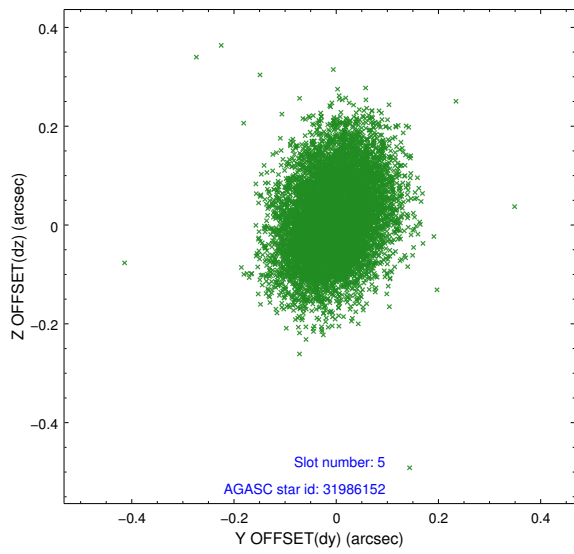
2.4.1 Slot 3



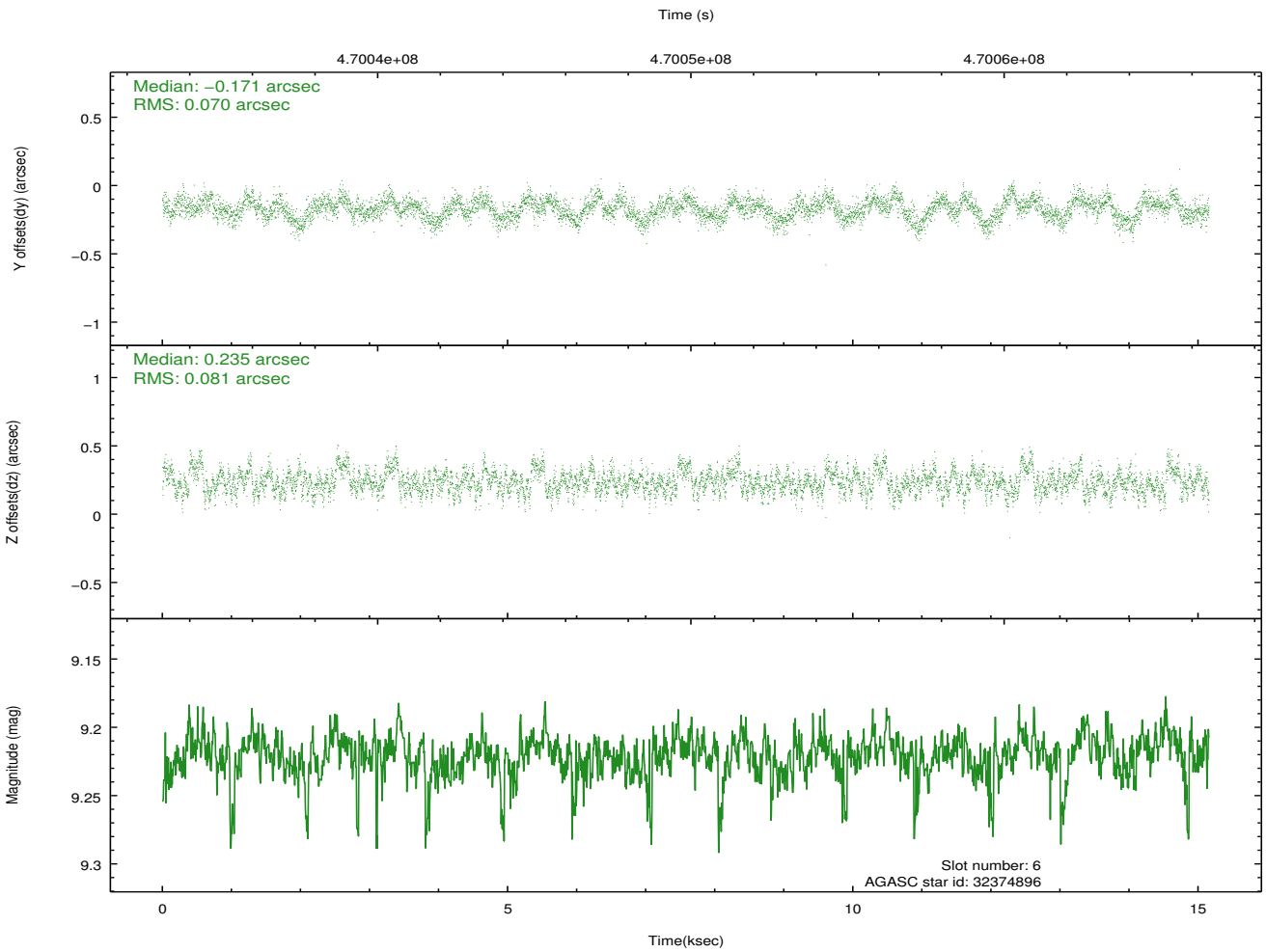
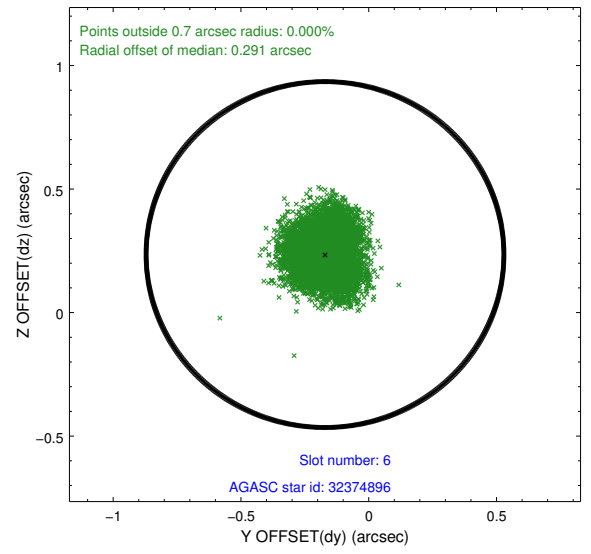
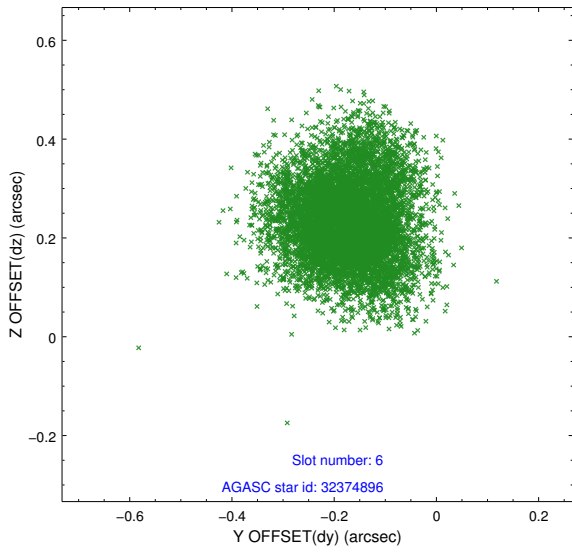
2.4.2 Slot 4



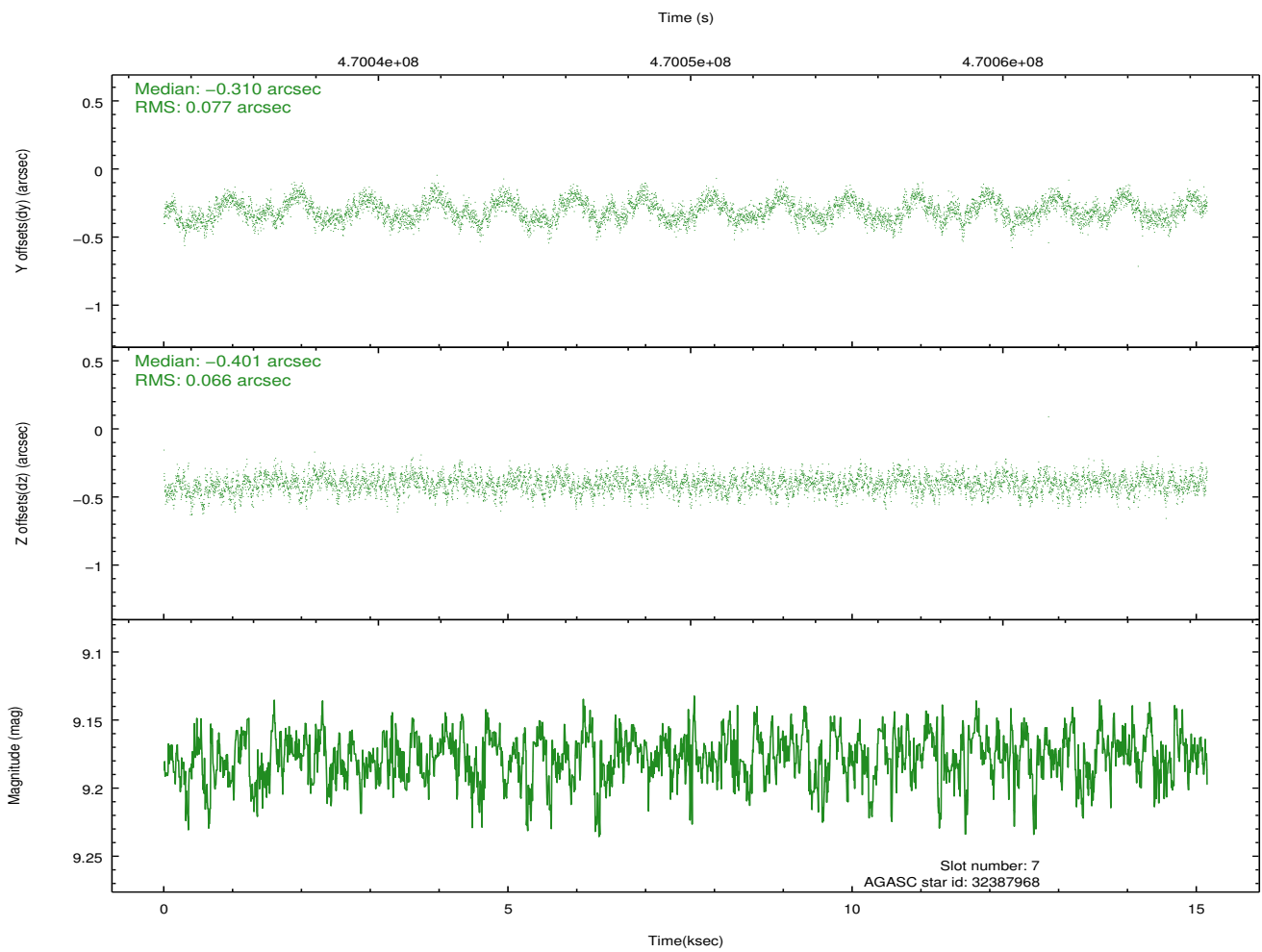
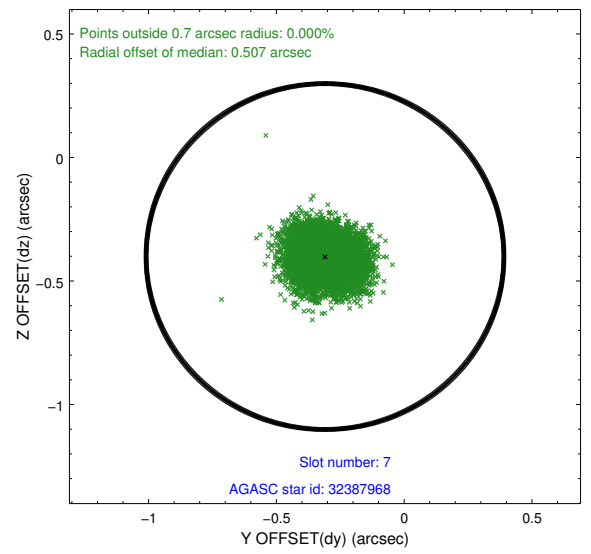
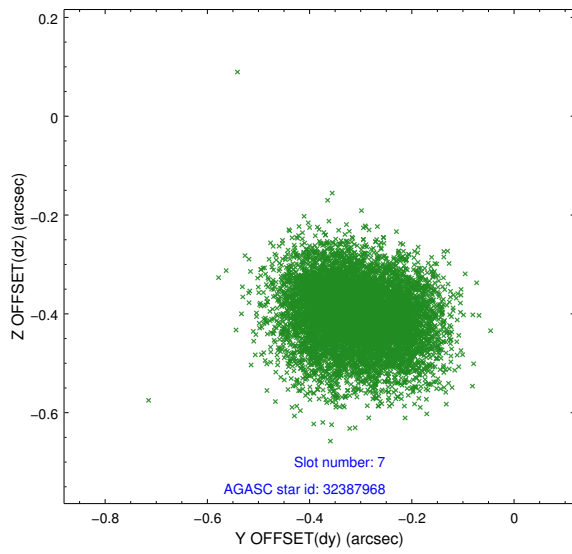
2.4.3 Slot 5



2.4.4 Slot 6

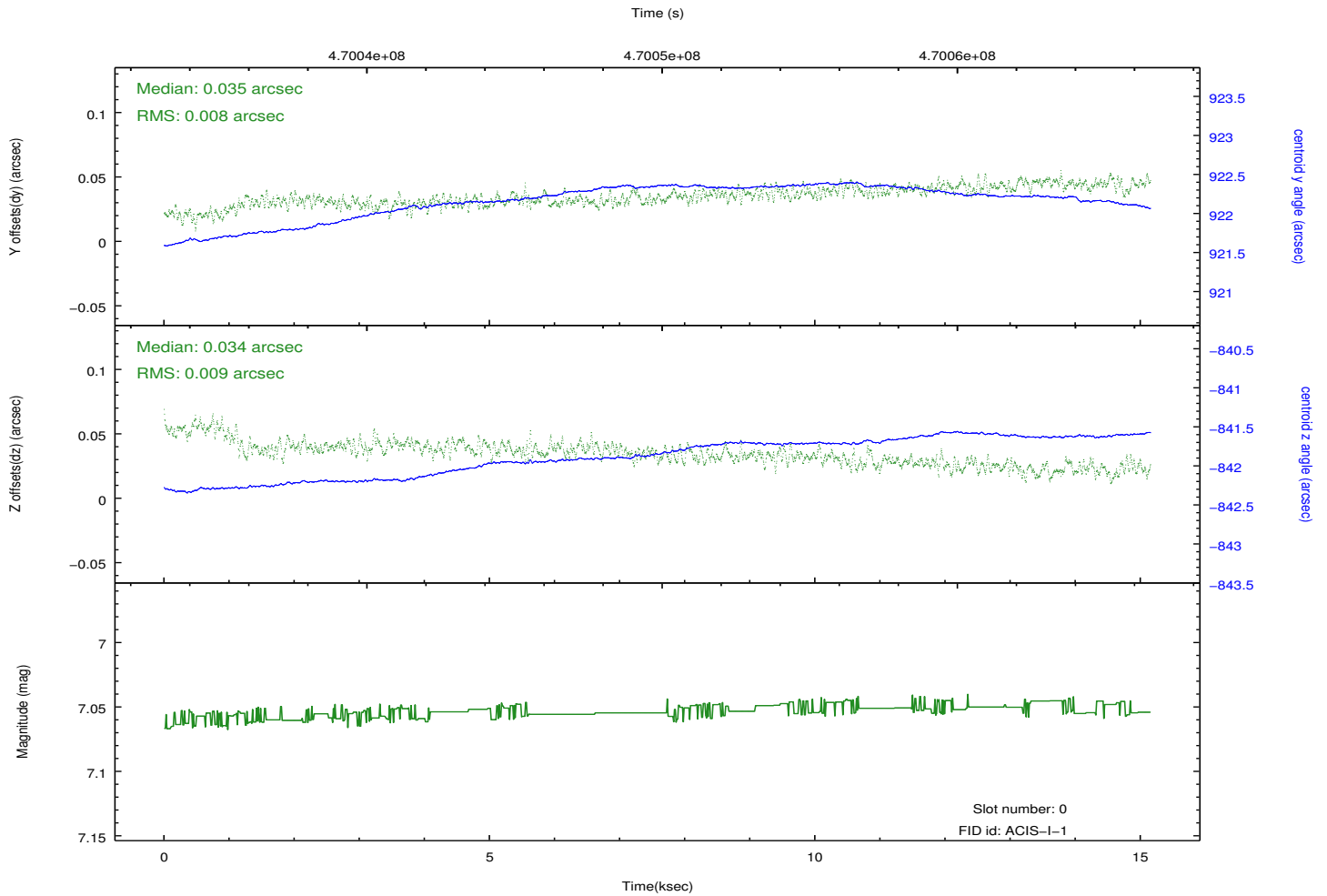
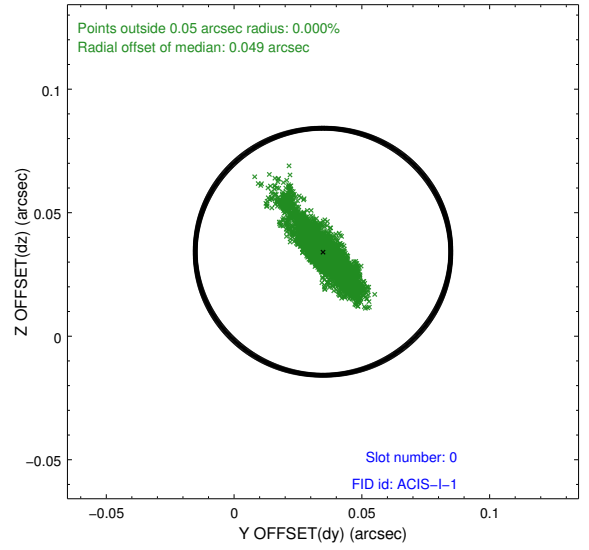
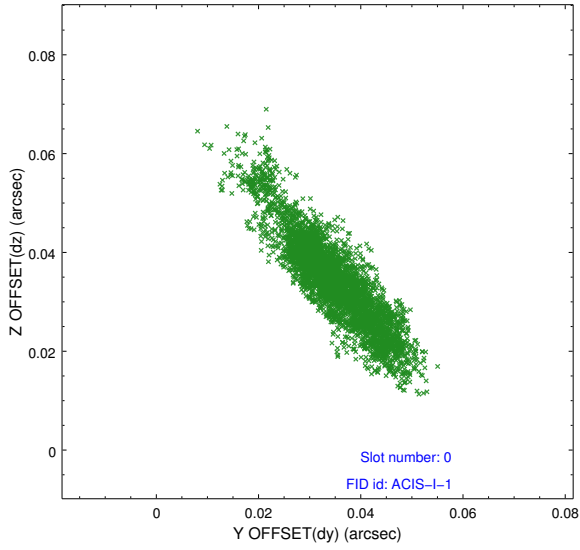


2.4.5 Slot 7

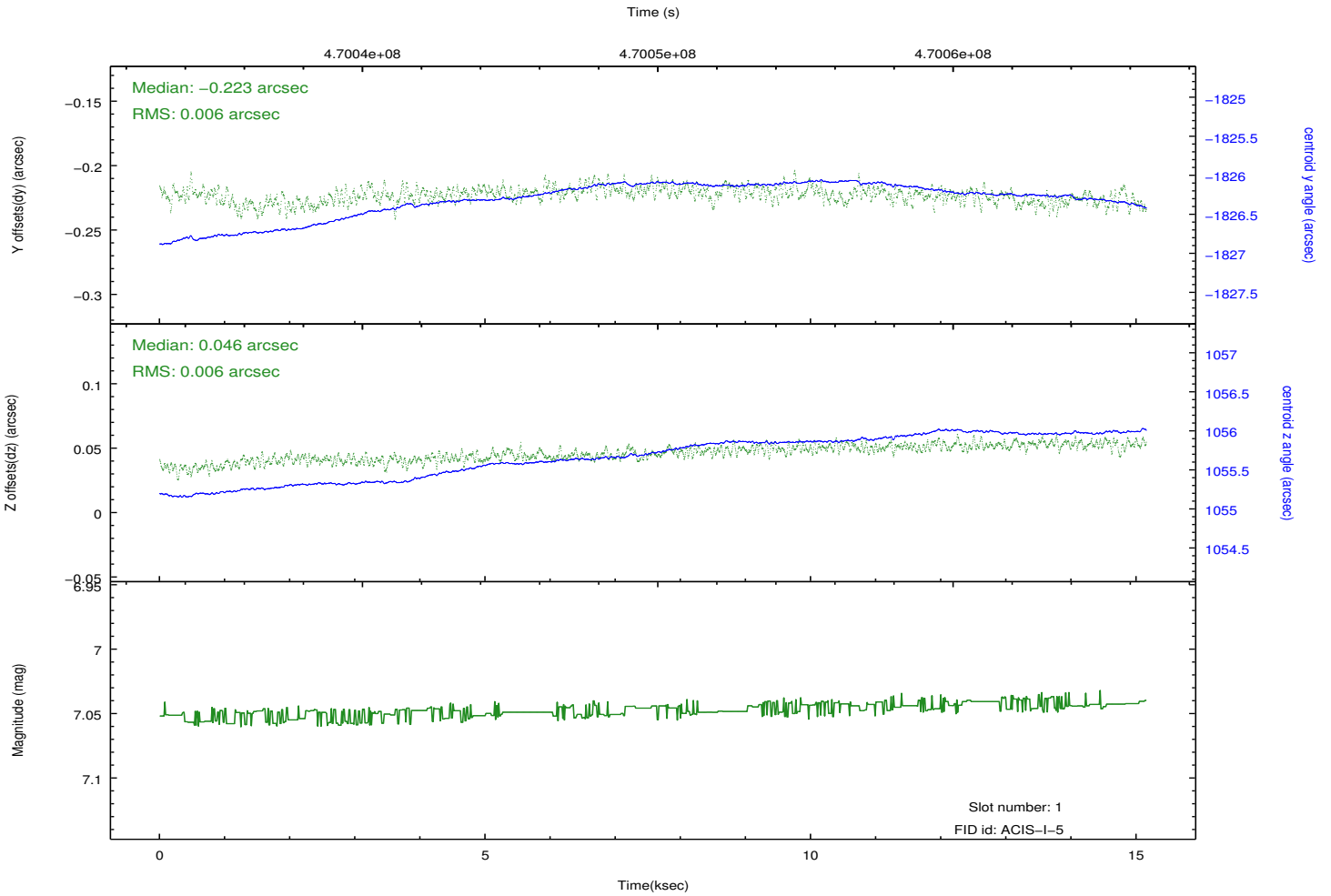
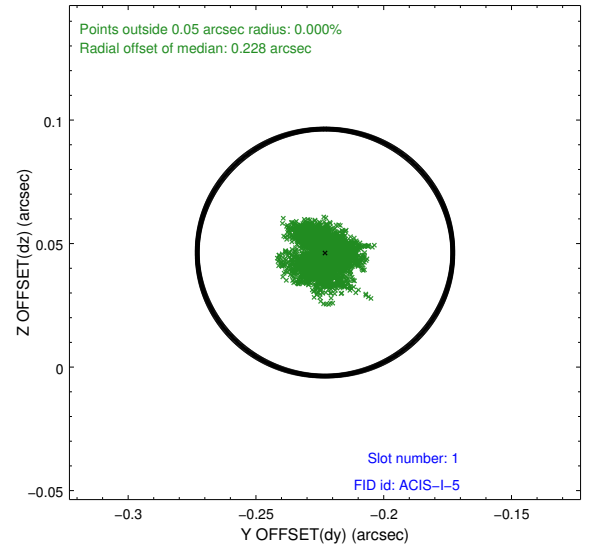
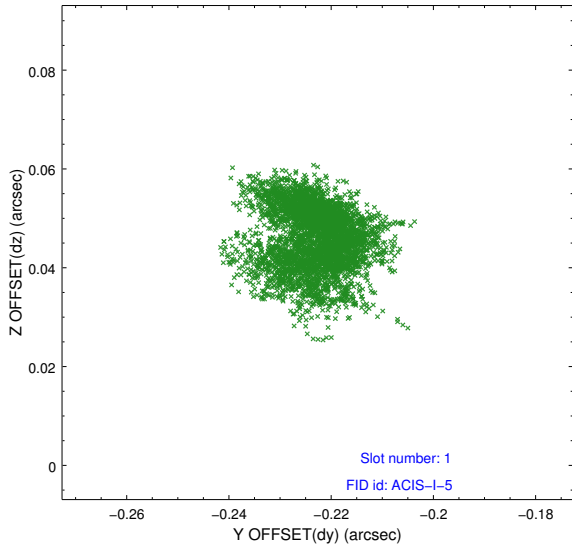


2.5 FID Slots

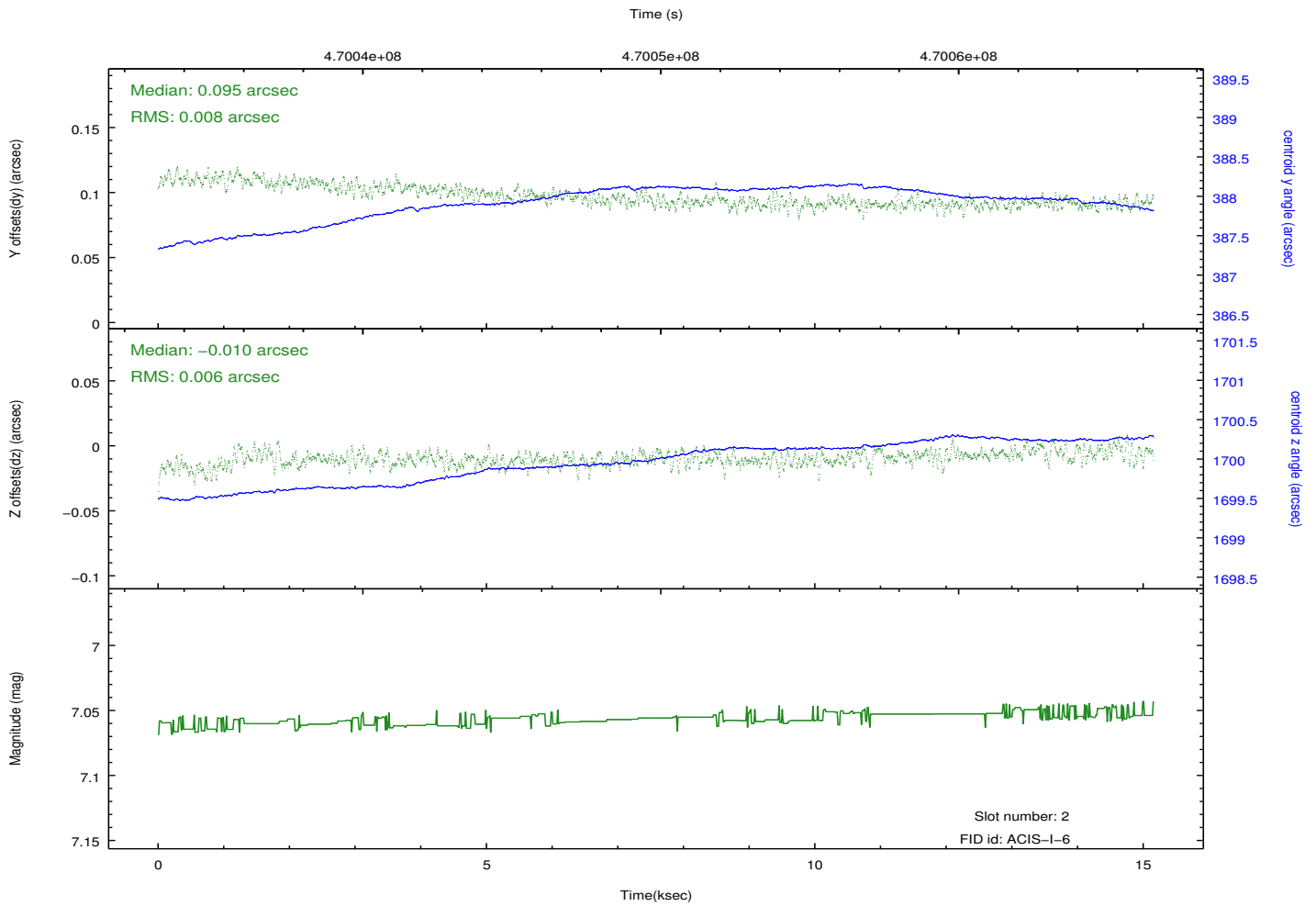
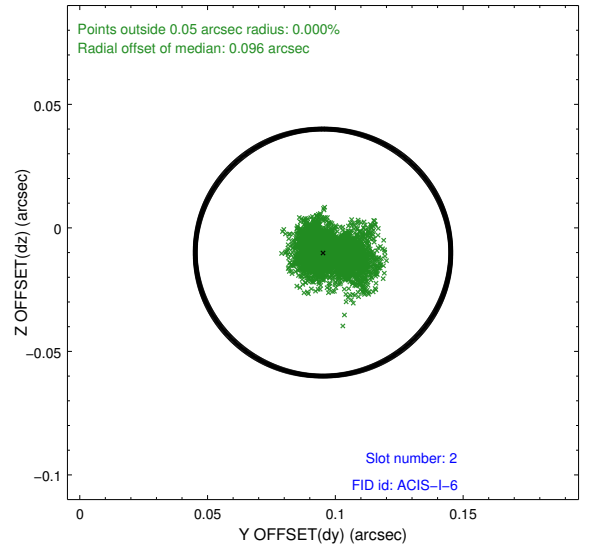
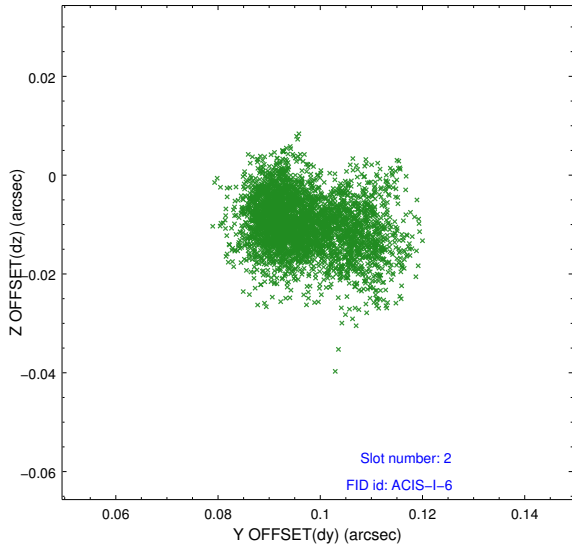
2.5.1 Slot 0



2.5.2 Slot 1



2.5.3 Slot 2



A Summary

A.1 Status

V&V Scientist	Beth Sundheim
V&V Date (YYYY-MM-DD)	2014.12.03
V&V Edition	1
V&V Disposition and Status	OK
V&V Charge Time	15.090800116062

A.2 Comments

Roll preference met.

These data have been reprocessed with new aspect alignment calibration files that correct small mean offsets (up to 0.4 arcsecs) and improve overall astrometric accuracy. The new calibration was determined using data from the time period being reprocessed and was performed using cross-correlation of X-ray sources with radio and optical counterparts.