

V&V Reference Report

L2 ASCDS Version : 10.2.4

Observation 16240 - L2 Version 1
Chandra X-Ray Center

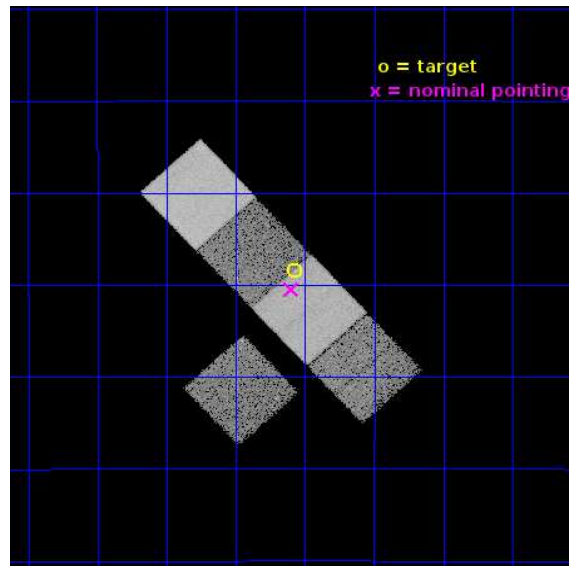
L2 Processing Date : Oct 4 2014

Contents

1	Front	2
2	OBI	3
2.1	OBI	3
2.1.1	Images	3
2.1.2	Bias	3
2.1.3	Parameters	4
2.1.4	Events	4
2.2	Compared Parameters	5
2.3	Aspect	6
2.4	Star Slots	9
2.4.1	Slot 3	9
2.4.2	Slot 4	10
2.4.3	Slot 5	11
2.4.4	Slot 6	12
2.4.5	Slot 7	13
2.5	FID Slots	14
2.5.1	Slot 0	14
2.5.2	Slot 1	15
2.5.3	Slot 2	16
A	Summary	17
A.1	Status	17
A.2	Comments	17

1 Front

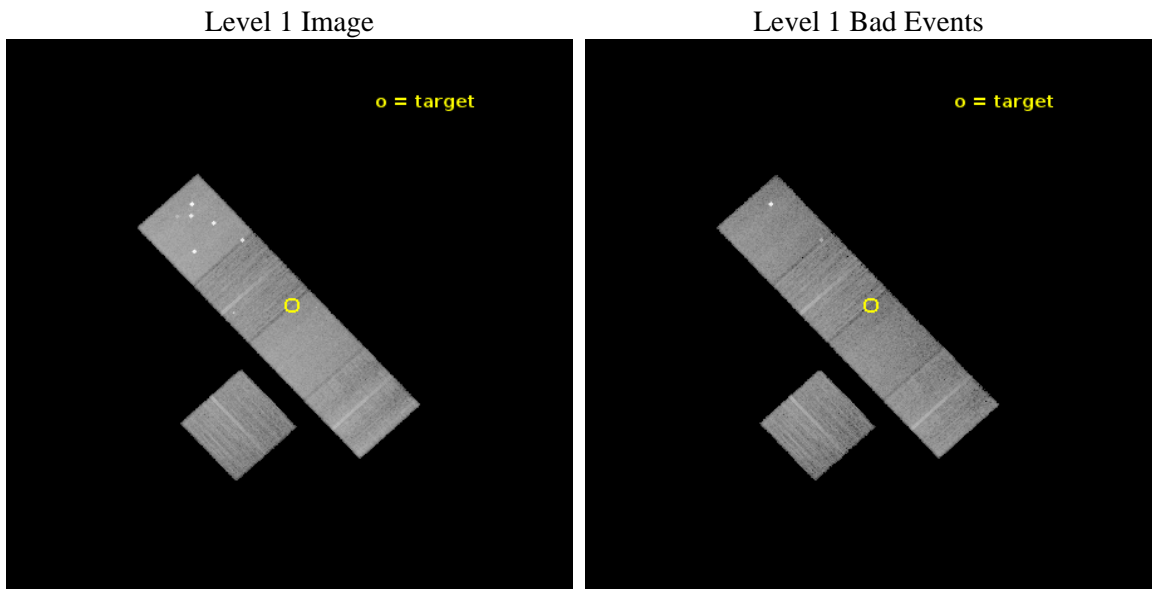
seq_num	601131	Sequence number
obs_id	16240	Observation id
title	The Missing Baryons Around Early-Type Galaxies	Proposal title
observer	Dr. Joel Bregman	Principal investigator
object	NGC 682	Source name
dtycycle	0	
cycle	P	events from which exps? Prim/Second/Both
ra_targ	27.269167	Observer's specified target RA [deg]
dec_targ	-14.974722	Observer's specified target Dec [deg]
ra_nom	27.2746108642	Nominal RA [deg]
dec_nom	-15.008037645279	Nominal Dec [deg]
roll_nom	47.158032010676	Nominal Roll [deg]
revision	1	Processing version of data
ontime	20608.800158501	Sum of GTIs [s]
livetime	20339.531012452	Livetime [s]
ontime3	20605.659098148	Sum of GTIs [s]
ontime5	20608.800158501	Sum of GTIs [s]
ontime6	20608.800158501	Sum of GTIs [s]
ontime7	20608.800158501	Sum of GTIs [s]
ontime8	20608.800158501	Sum of GTIs [s]
l2events	167108	Number of level 2 events



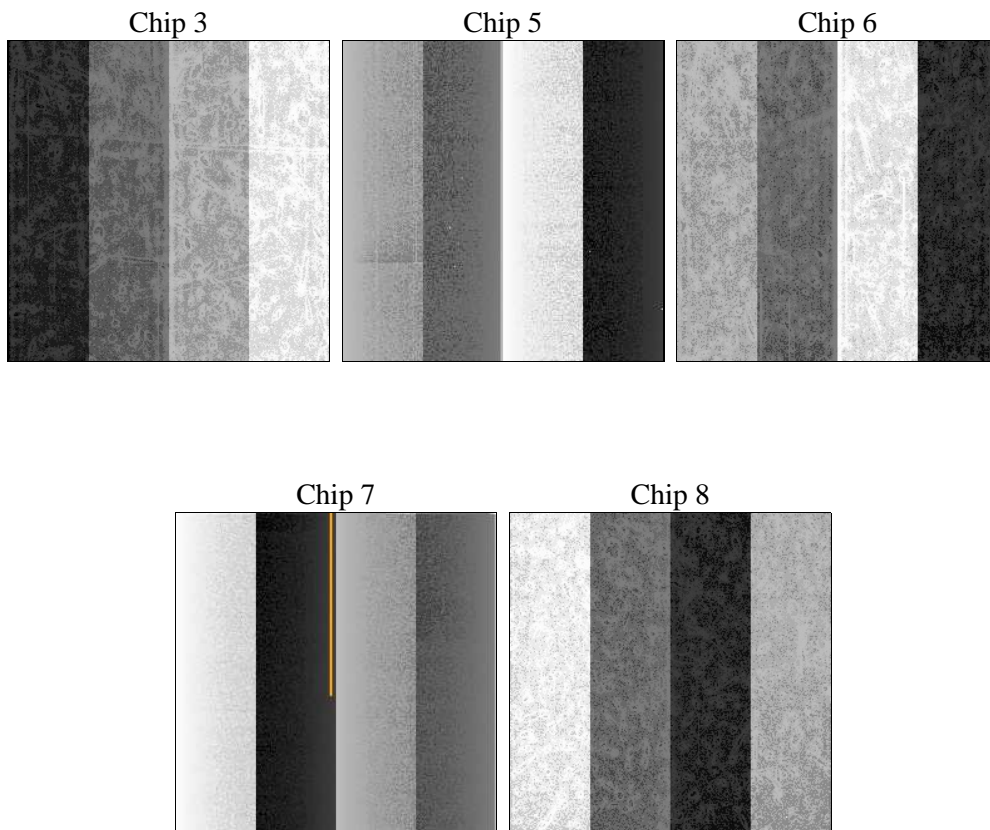
2 OBI

2.1 OBI

2.1.1 Images



2.1.2 Bias



2.1.3 Parameters

obi_num	1	Obi number	sched_exp_time	20546.000000	[s] Scheduled observation exposure time
ascdsver	10.2.4	Processing system revision	ontime	20608.800158501	Sum of GTIs [s]
caldbver	4.6.3	 	ontime3	20605.659098148	Sum of GTIs [s]
date	2014-10-05T02:40:34	Date and time of file creation	ontime5	20608.800158501	Sum of GTIs [s]
revision	1	Processing version of data	ontime6	20608.800158501	Sum of GTIs [s]
			ontime7	20608.800158501	Sum of GTIs [s]
			ontime8	20608.800158501	Sum of GTIs [s]
			l1events	663927	Number of level 1 events

2.1.4 Events

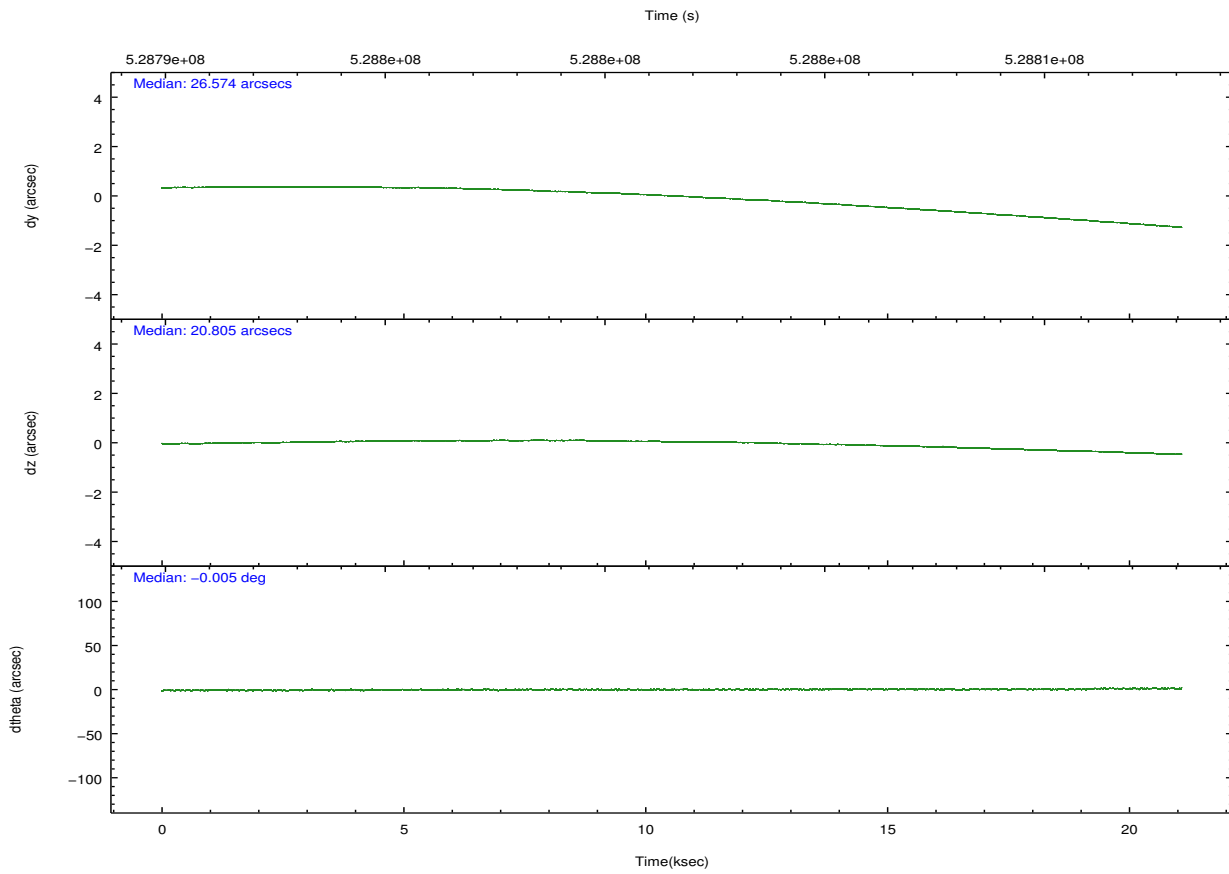
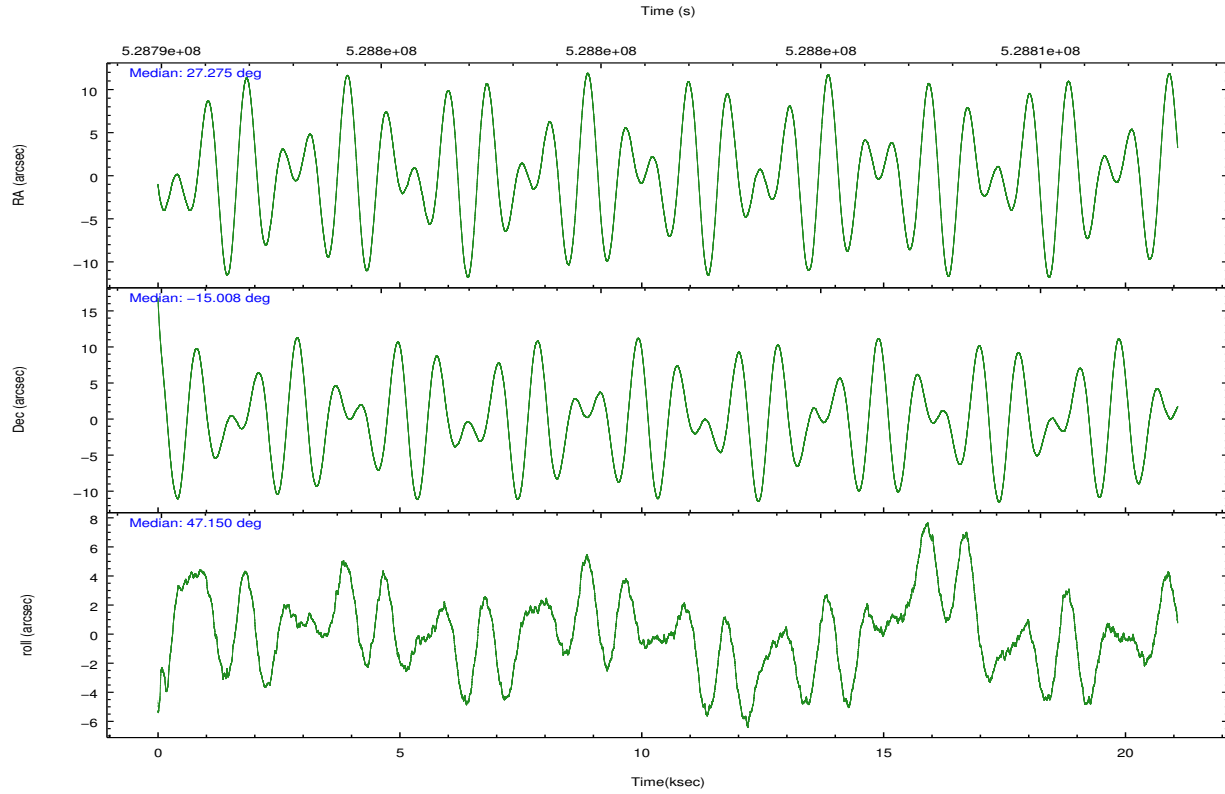
	ccd 3	ccd 5	ccd 6	ccd 7	ccd 8
level 1 events	96322	192447	104603	138607	131948
rejected events	85196	94043	92057	79280	96827
rejected %	88%	48%	88%	57%	73%

	ccd 3	ccd 5	ccd 6	ccd 7	ccd 8
grade 0 events	3819	21674	4318	5007	9739
	3%	11%	4%	3%	7%
grade 1 events	66	440	60	174	95
	0%	0%	0%	0%	0%
grade 2 events	2531	25566	2902	12197	8508
	2%	13%	2%	8%	6%
grade 3 events	1186	3541	1247	4767	3734
	1%	1%	1%	3%	2%
grade 4 events	1272	3196	1226	4866	3541
	1%	1%	1%	3%	2%
grade 5 events	5352	12402	5337	13895	7670
	5%	6%	5%	10%	5%
grade 6 events	2320	44463	2855	32509	9603
	2%	23%	2%	23%	7%
grade 7 events	79776	81165	86658	65192	89058
	82%	42%	82%	47%	67%

2.2 Compared Parameters

Parameter	Planned	Actual	Parameter	Planned	Actual
Instrument	ACIS	ACIS	Obspar format version number	7	7
Detector	ACIS-35678	ACIS-35678	Obspar file type	PREDICTED	ACTUAL
Grating	NONE	NONE	Obspar update status	NONE	UPDATED
Data mode	VFAINT	VFAINT	CCD I0 on	N	N
Observation mode	POINTING	POINTING	CCD I1 on	N	N
[deg] Pointing RA	27.268663	27.27461086420029	CCD I2 on	N	N
[deg] Pointing Dec	-15.034883	-15.00803764527932	CCD I3 on	Y	Y
[deg] Pointing Roll	46.999859	47.15803201067626	CCD S0 on	N	N
[mm] SIM focus pos	-0.684267	-0.6828225247311905	CCD S1 on	O2	Y
[mm] SIM defocus	0	0.001444936568705701	CCD S2 on	Y	Y
[mm] SIM translation stage pos	-190.132523	-190.1425803651734	CCD S3 on	Y	Y
[mm] SIM translation stage offset	0	0.01005778216563158	CCD S4 on	O1	Y
[s] Observation start time (MET)	528791509.184000	528790394.3877	CCD S5 on	N	N
Observation start date	2014-10-04T06:30:42	2014-10-04T06:13:14	Number of optional ACIS chips dropped	0	0
[s] Observation end time (MET)	528812055.184000	528813346.18897	On-chip summing requested	N	N
Observation end date	2014-10-04T12:13:08	2014-10-04T12:35:46	Subarray requested	NONE	NONE
Read mode	TIMED	TIMED	Alternating exposures requested	N	N
			[s] Primary exposure time	0.000000	3.1

2.3 Aspect

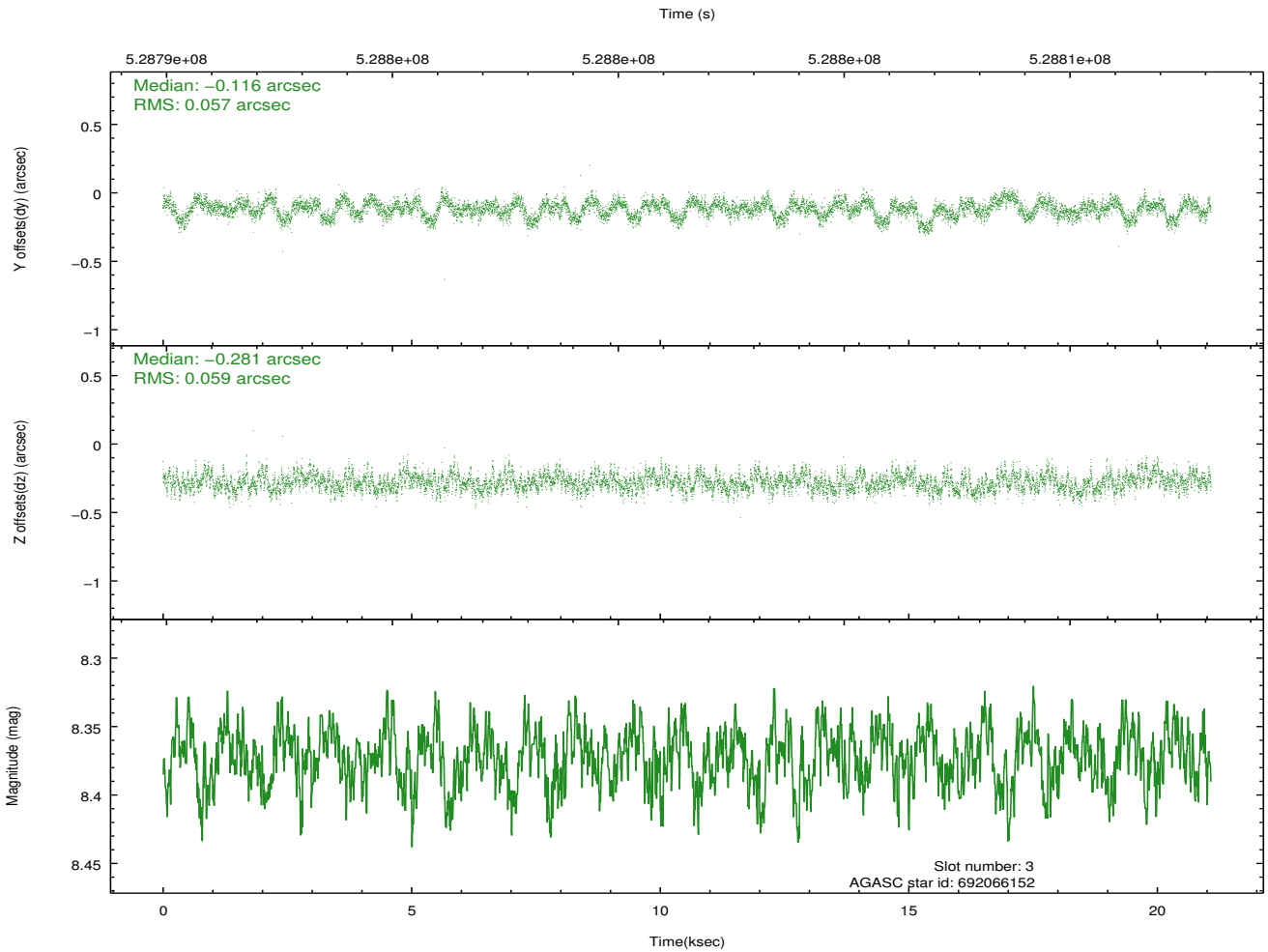
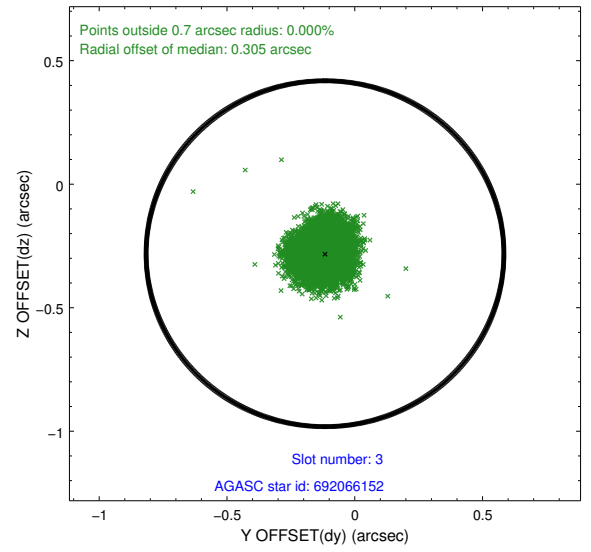
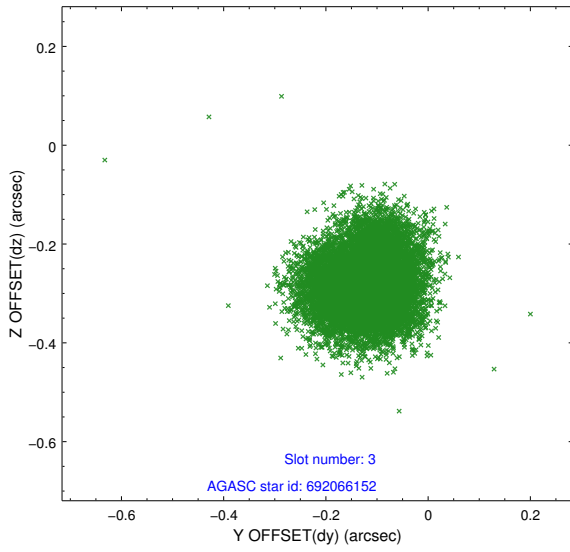


Slot Statistics

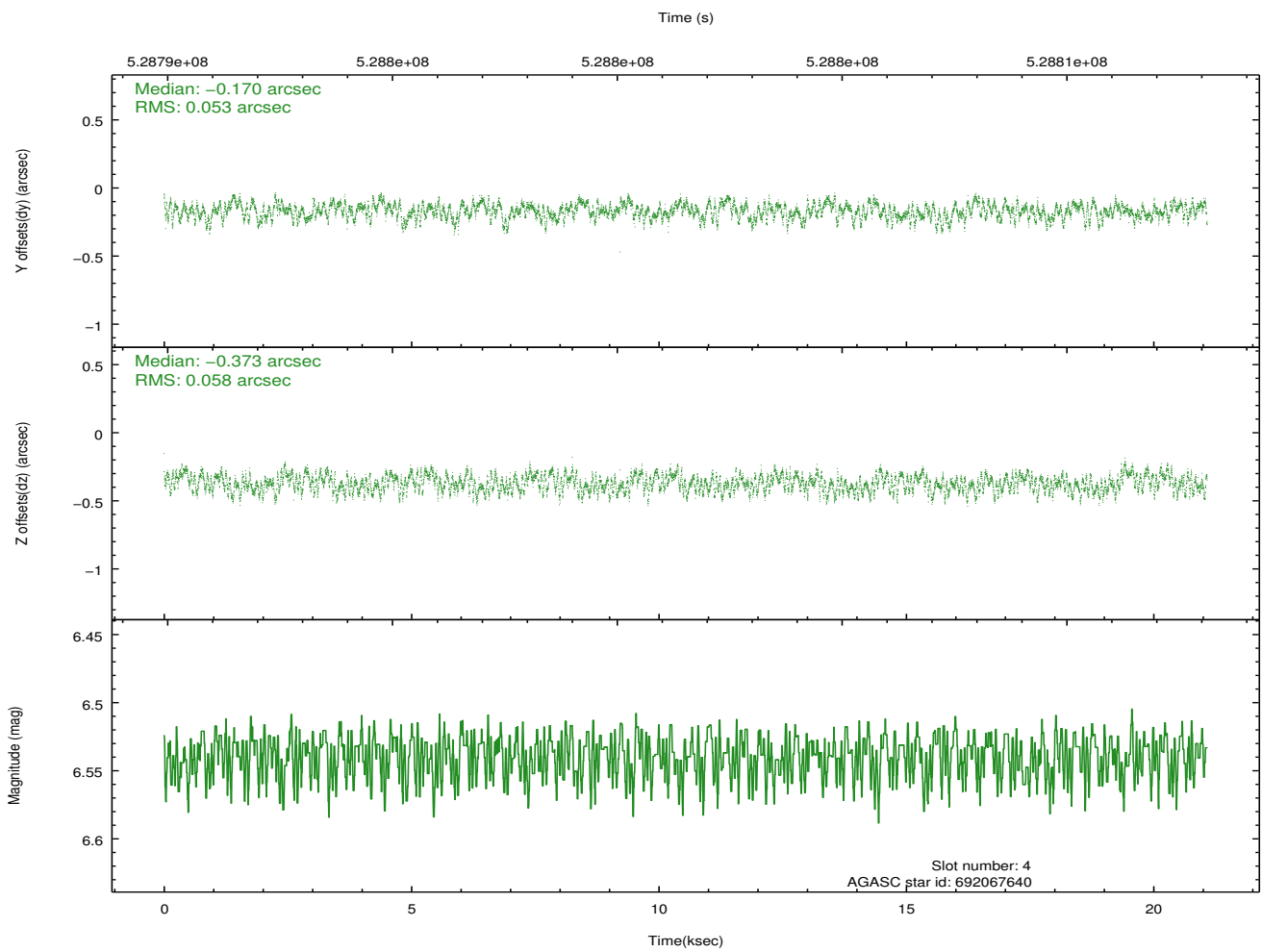
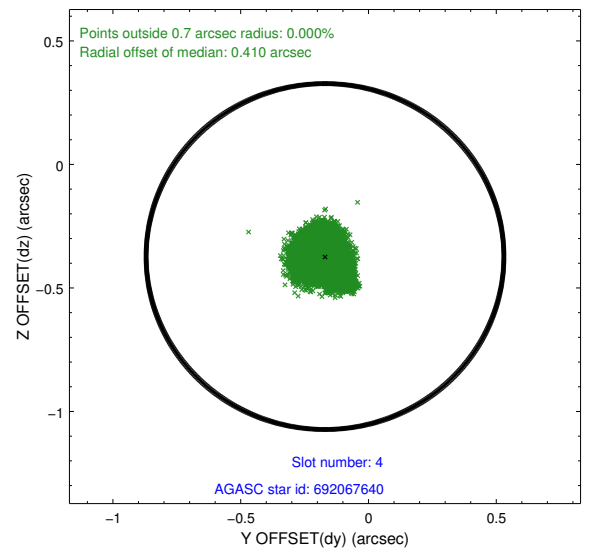
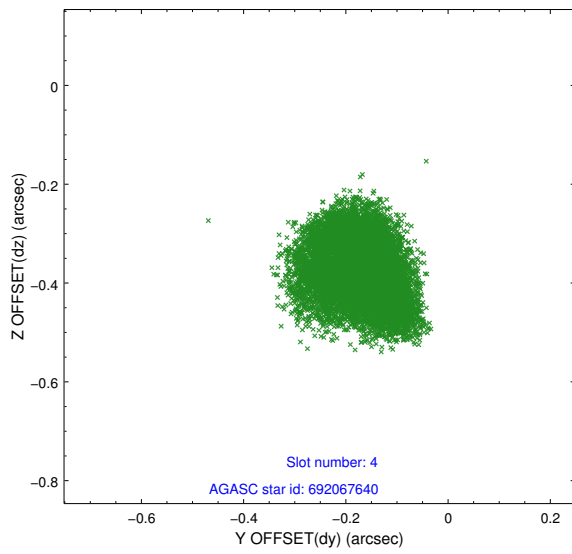
slot	status	id	mag	n_pts	med_dy	med_dz	dr1	dr2	ra	dec	mean_y	mean_z
0	FID	ACIS-S-2	7.02	5142	-0.197	-0.012	0.010	0.017	0.000000	0.000000	-779.87	-1742.24
1	FID	ACIS-S-4	7.12	5142	0.394	0.099	0.009	0.016	0.000000	0.000000	2133.89	166.21
2	FID	ACIS-S-5	7.14	5142	-0.228	-0.078	0.016	0.024	0.000000	0.000000	-1832.55	159.85
3	GUIDE	692066152	8.37	10279	-0.116	-0.281	0.089	0.138	26.984652	-14.673478	276.13	1609.79
4	GUIDE	692067640	6.54	10285	-0.170	-0.373	0.086	0.132	27.153512	-14.765242	436.42	954.98
5	GUIDE	767429904	9.24	10279	0.279	0.620	0.117	0.190	27.508778	-15.769061	-1363.53	-2411.01
6	GUIDE	767432880	8.73	10278	0.120	0.033	0.120	0.185	27.909221	-15.153897	1201.95	-1922.44
7	GUIDE	767558584	8.68	10279	-0.103	0.004	0.101	0.166	28.088259	-15.088418	1798.78	-2218.32

2.4 Star Slots

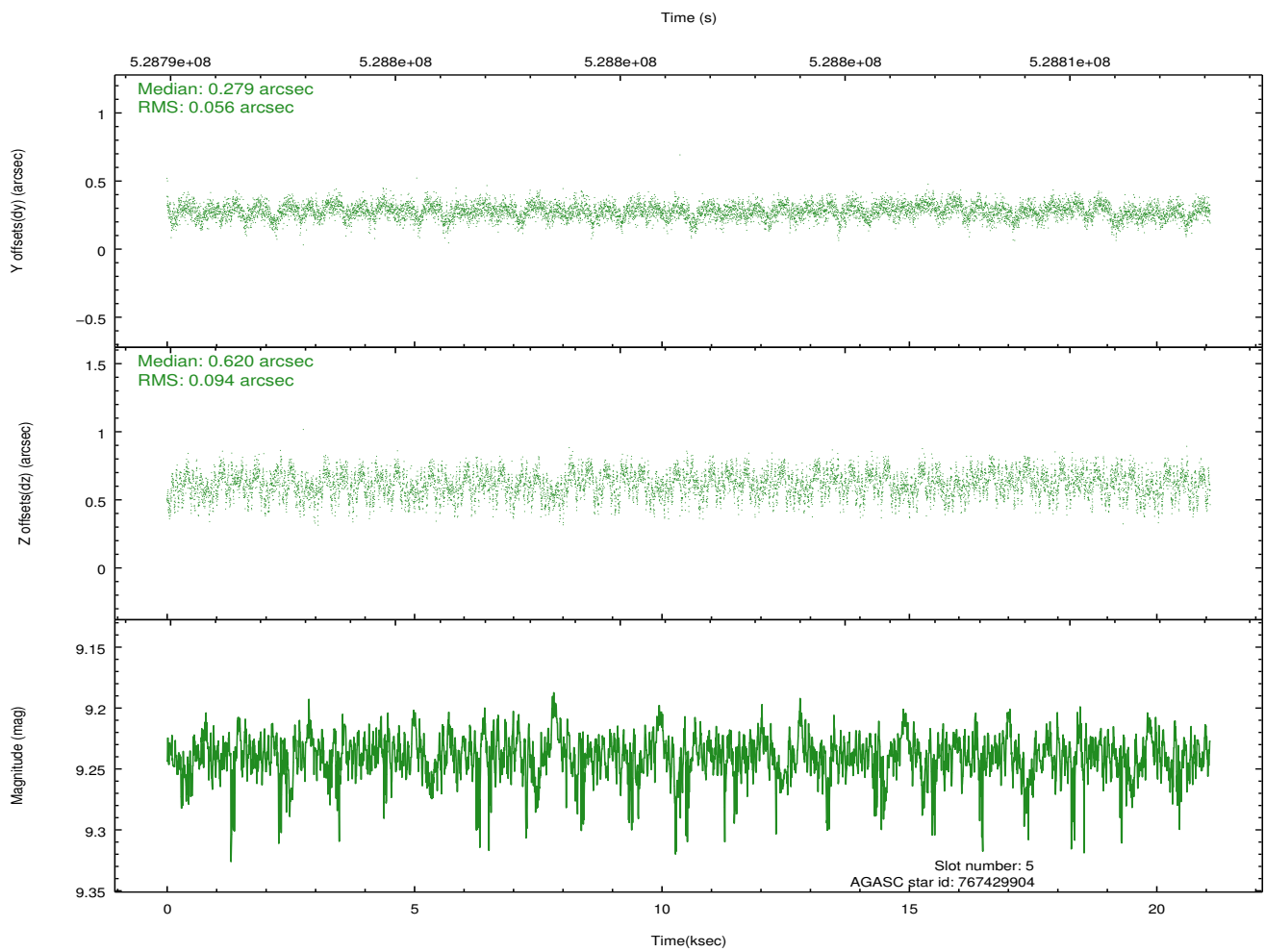
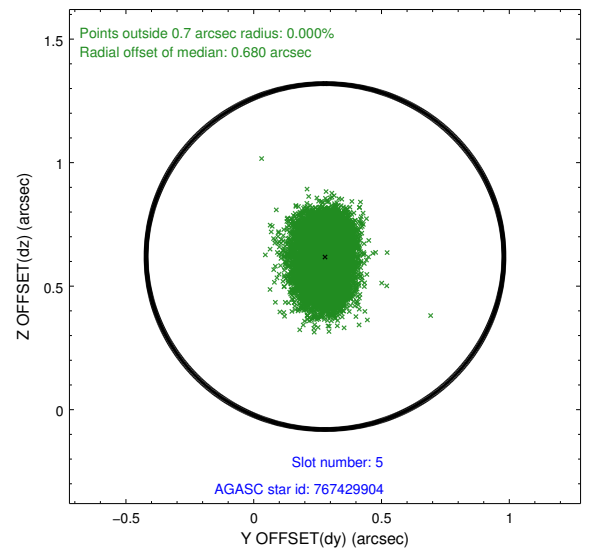
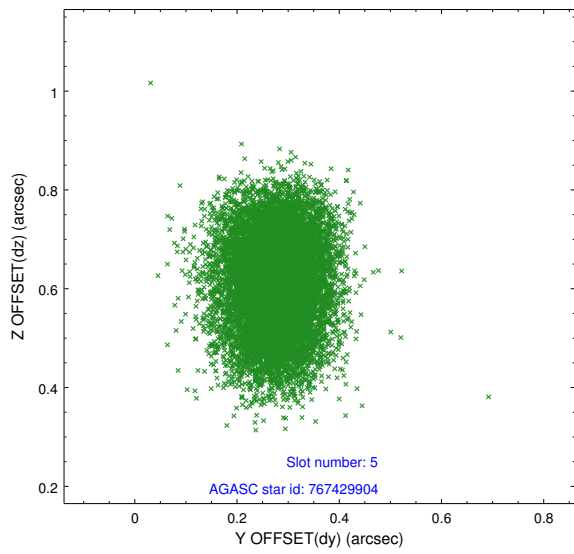
2.4.1 Slot 3



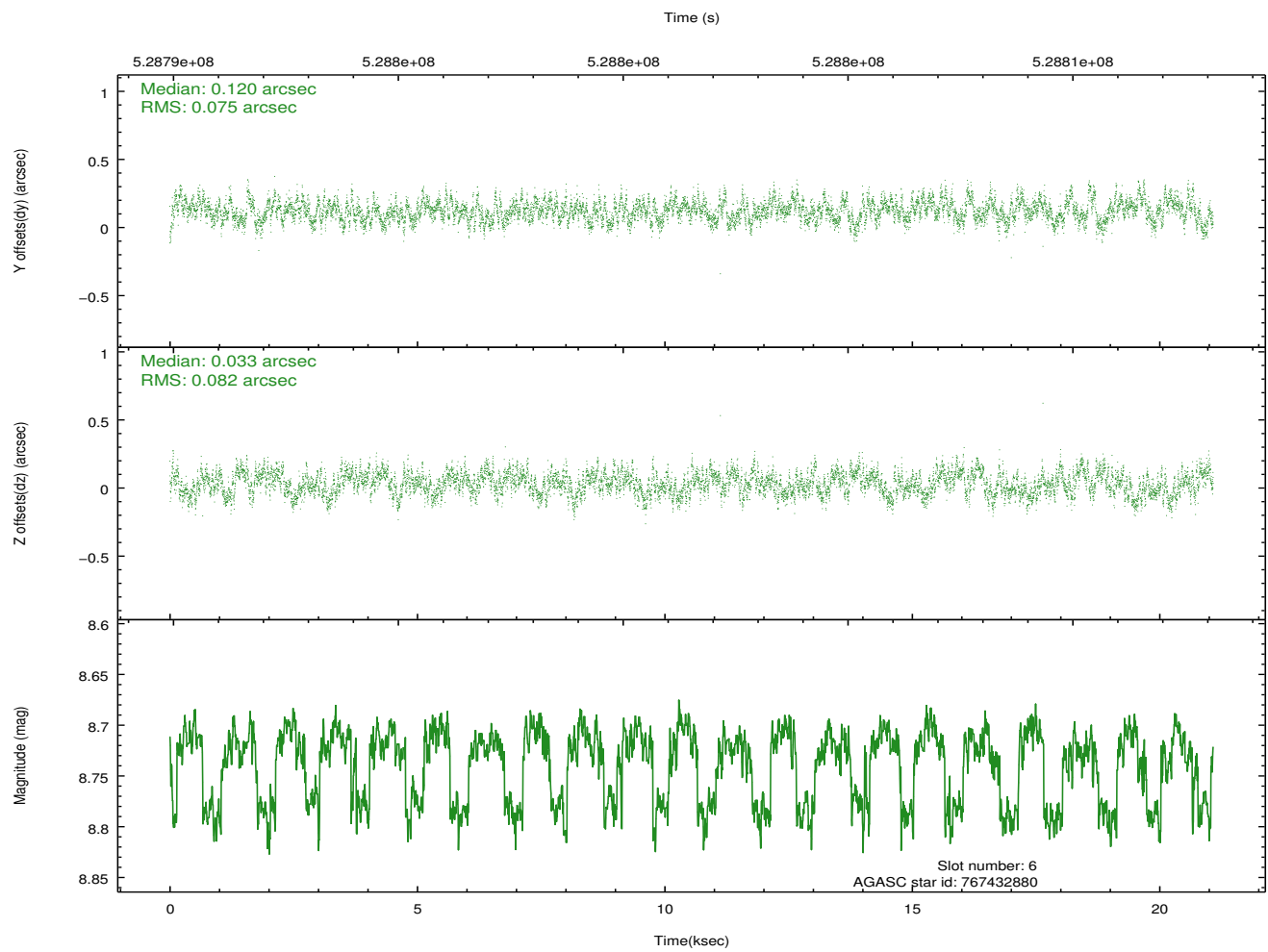
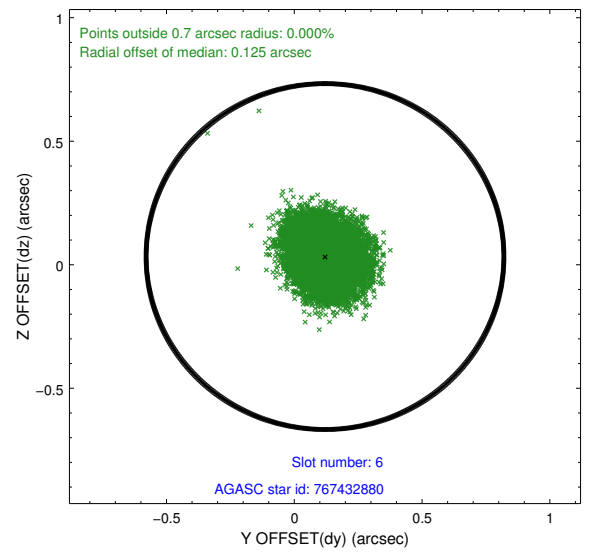
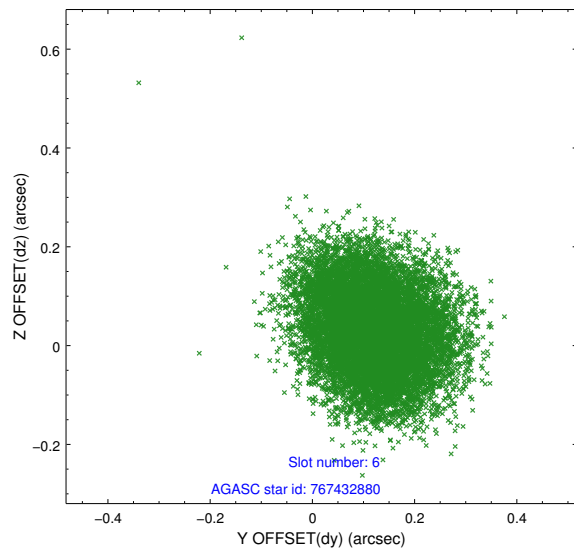
2.4.2 Slot 4



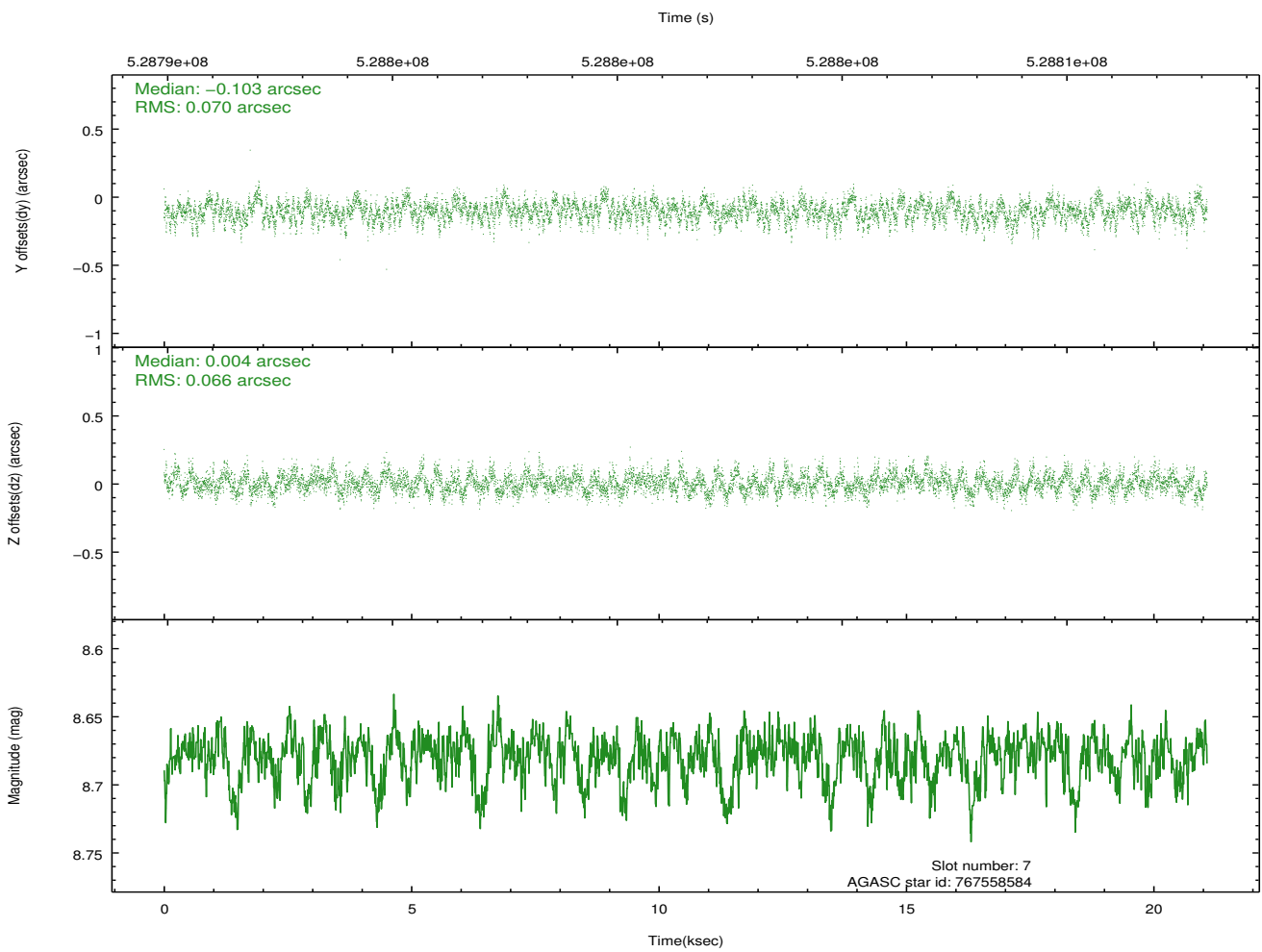
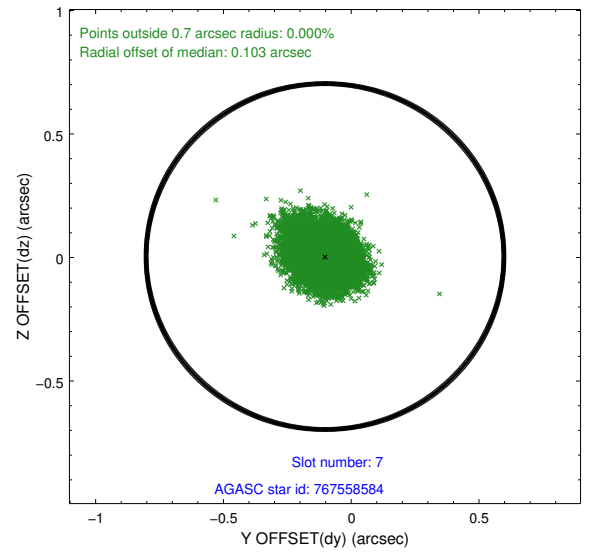
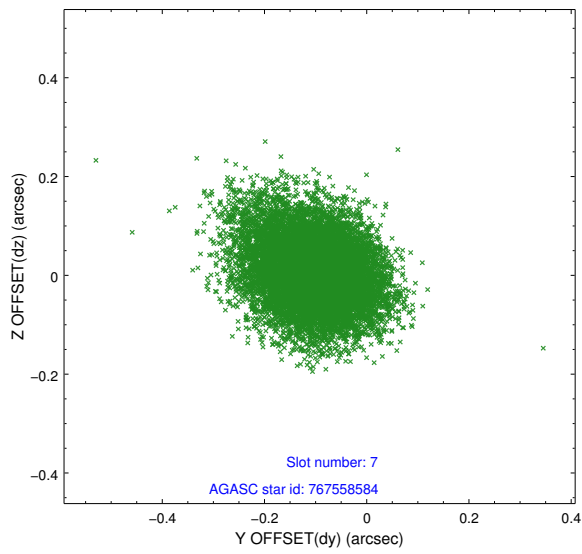
2.4.3 Slot 5



2.4.4 Slot 6

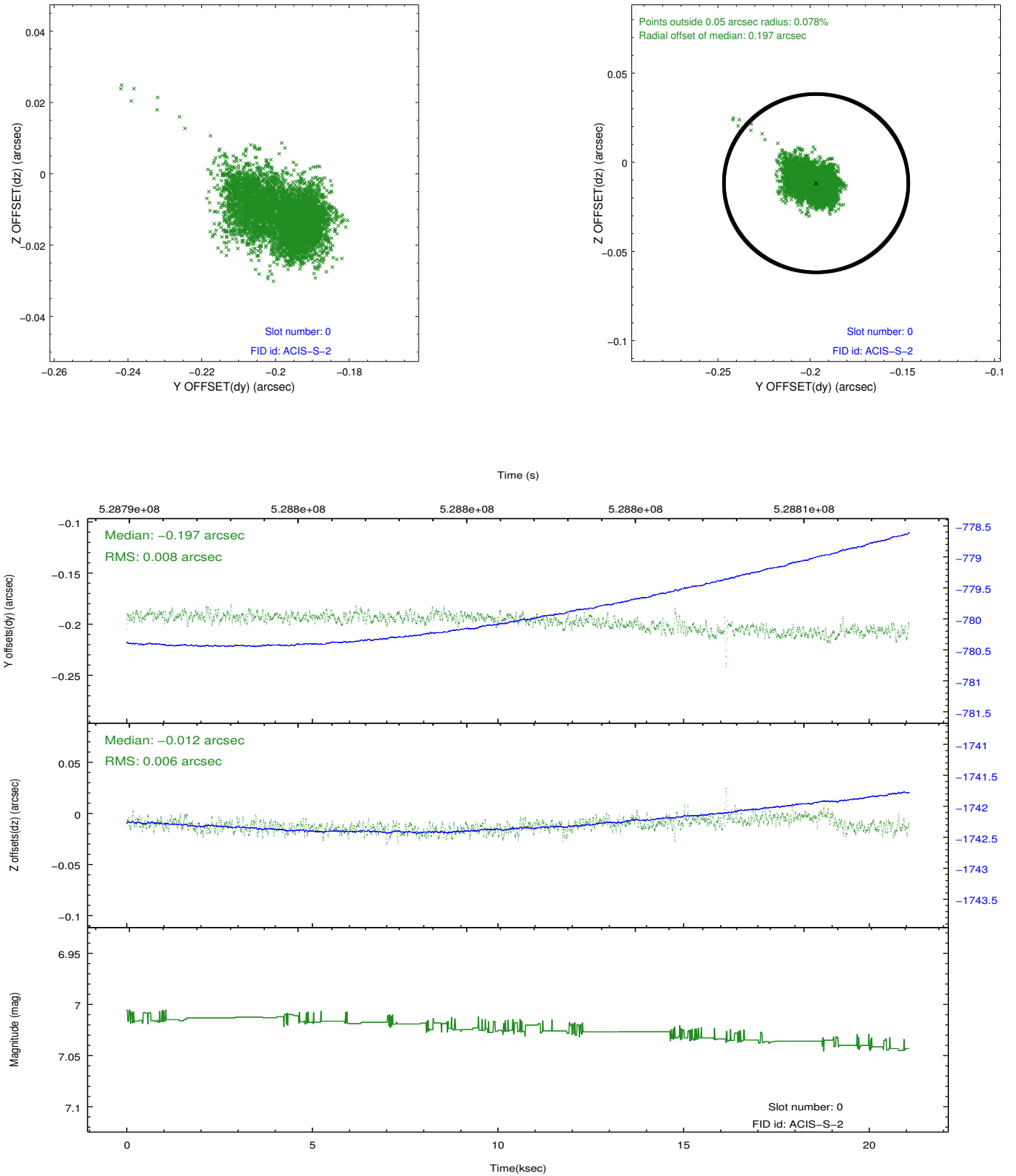


2.4.5 Slot 7

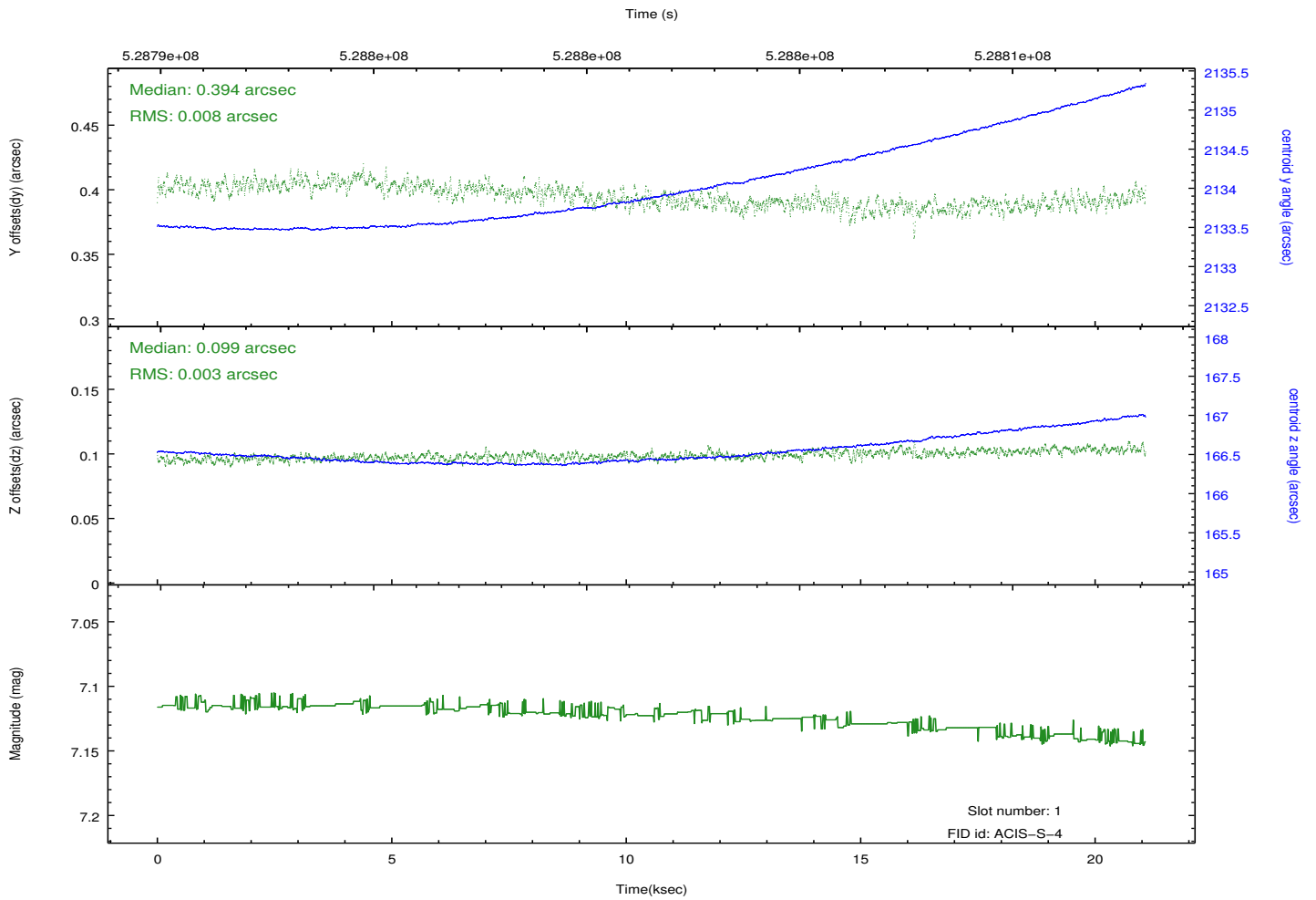
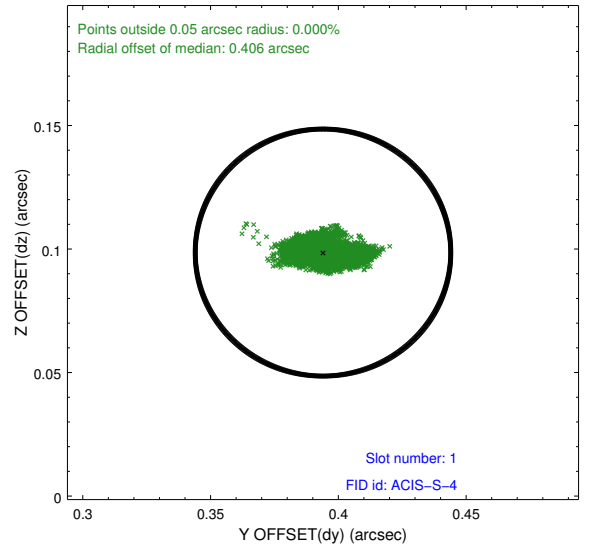
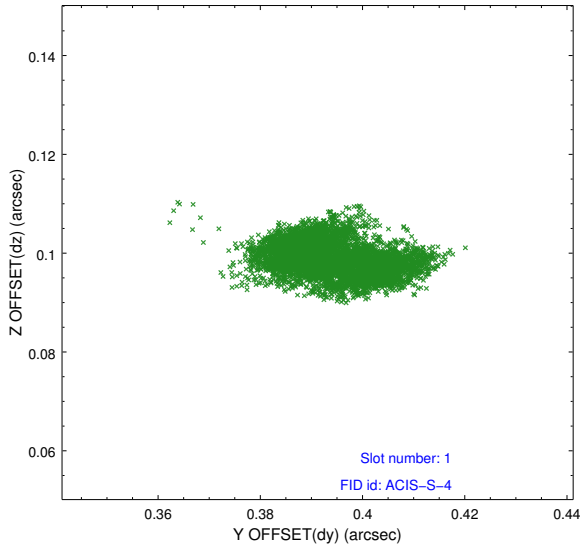


2.5 FID Slots

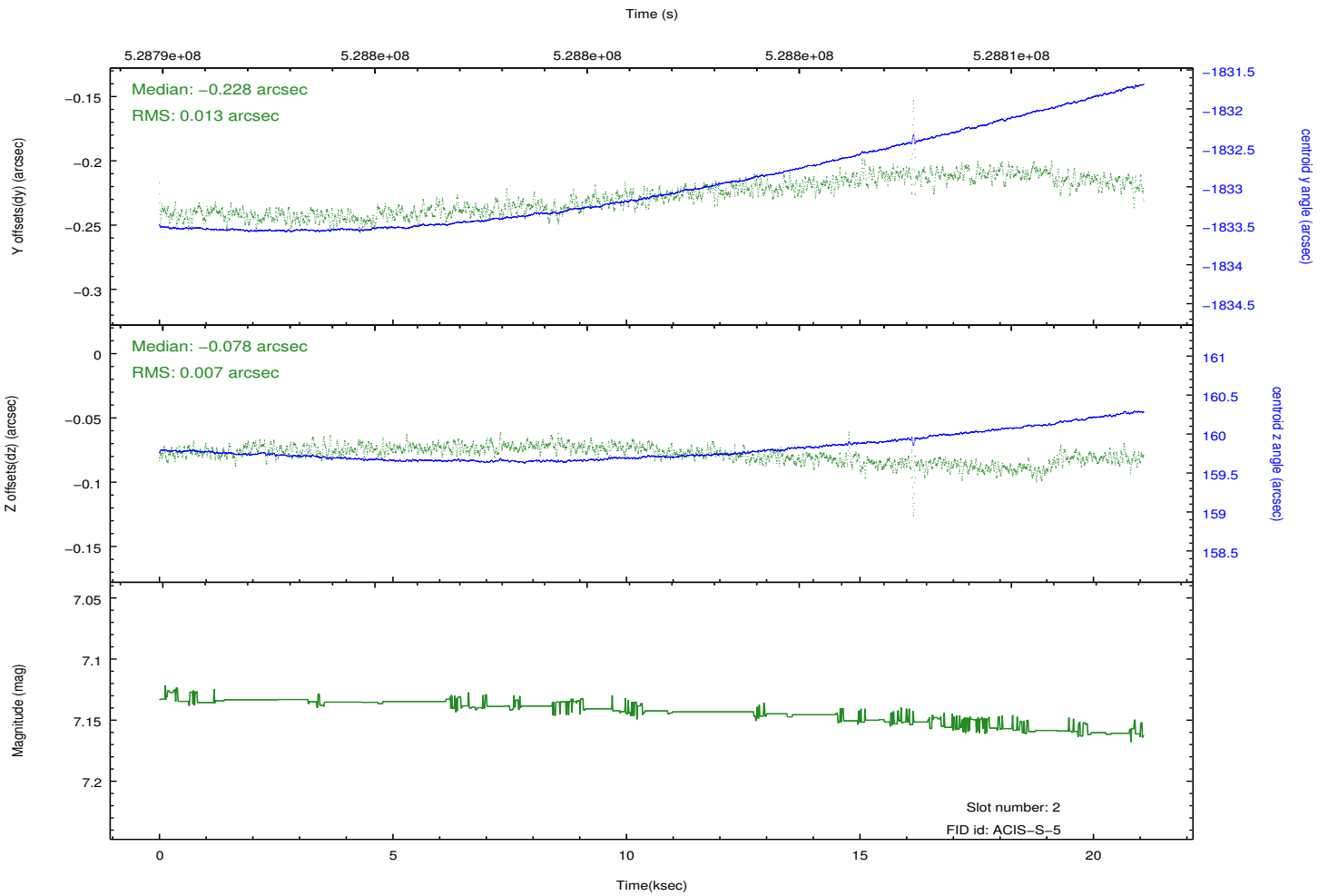
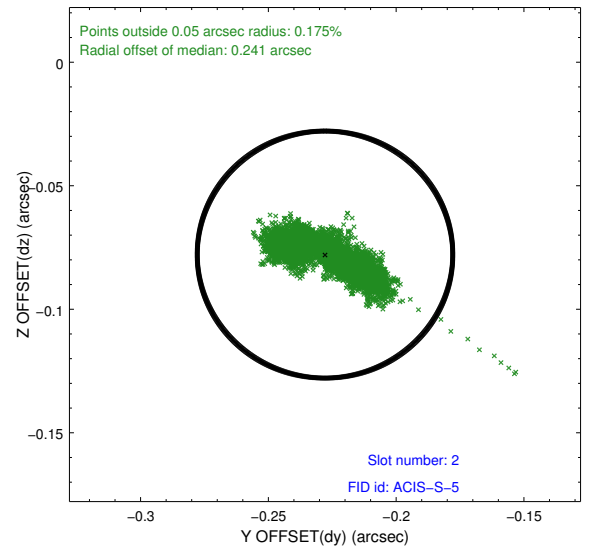
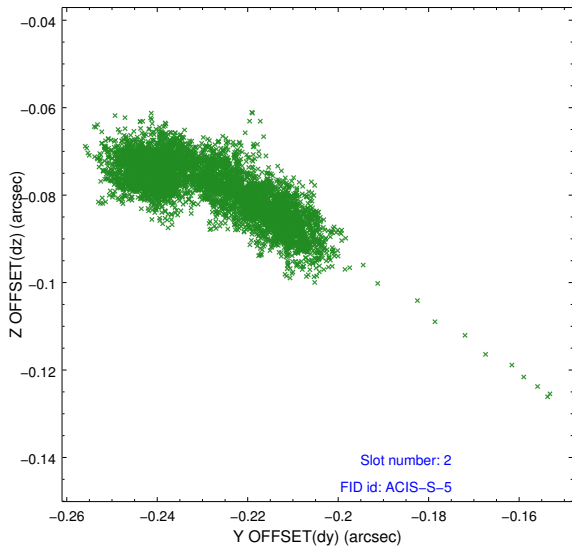
2.5.1 Slot 0



2.5.2 Slot 1



2.5.3 Slot 2



A Summary

A.1 Status

V&V Scientist	Jen Lauer
V&V Date (YYYY-MM-DD)	2014.10.07
V&V Edition	1
V&V Disposition and Status	OK
V&V Charge Time	20.608800158501

A.2 Comments