

V&V Reference Report

L2 ASCDS Version : 10.2.2

Observation 16430 - L2 Version 1
Chandra X-Ray Center

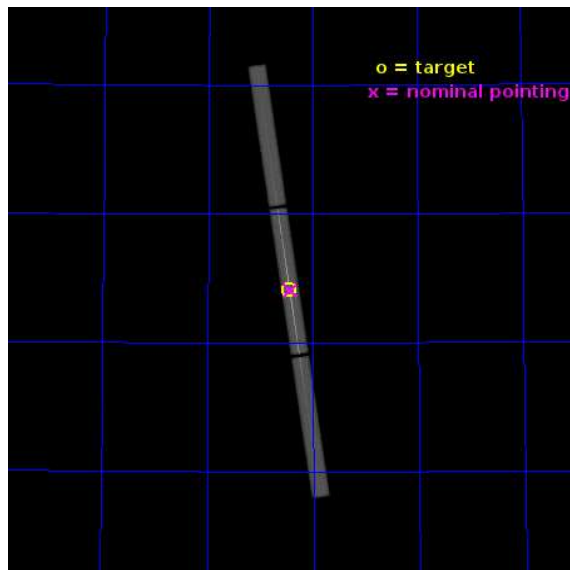
L2 Processing Date : Jun 27 2014

Contents

1	Front	2
2	OBI	3
2.1	OBI	3
2.1.1	Images	3
2.1.2	Parameters	4
2.1.3	Events	4
2.2	Compared Parameters	5
2.3	Aspect	6
2.4	Star Slots	9
2.4.1	Slot 3	9
2.4.2	Slot 4	10
2.4.3	Slot 5	11
2.4.4	Slot 6	12
2.4.5	Slot 7	13
2.5	FID Slots	14
2.5.1	Slot 0	14
2.5.2	Slot 1	15
2.5.3	Slot 2	16
3	Gratings	17
3.1	LETG Arm	17
A	Summary	19
A.1	Status	19
A.2	Comments	19

1 Front

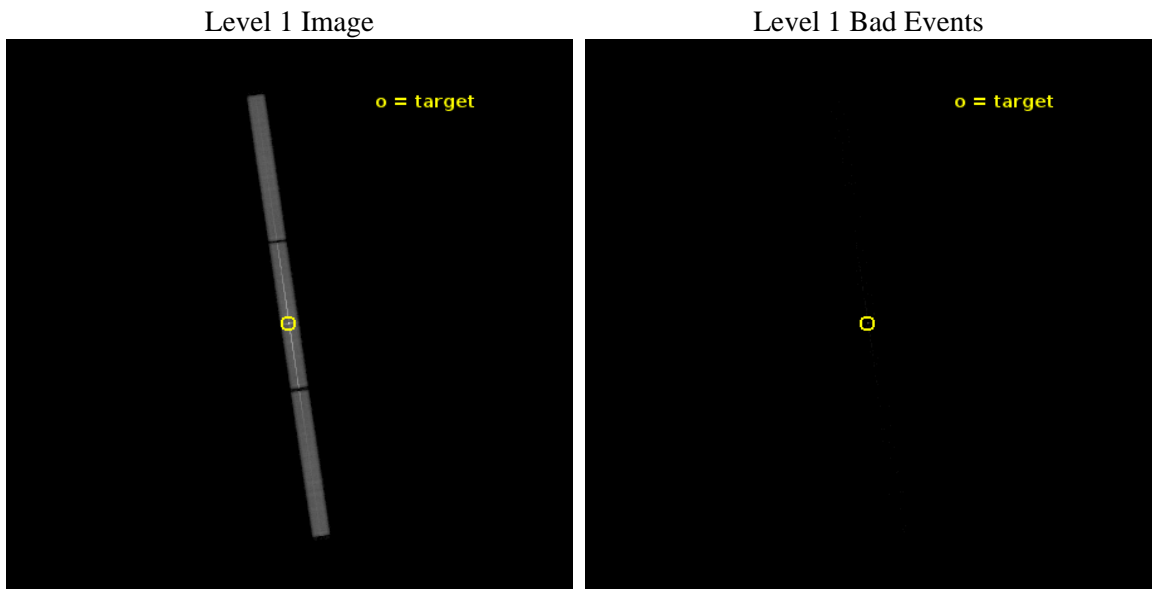
seq_num	790270	Sequence number
obs_id	16430	Observation id
title	AO-15 Calibration Observations of Mkn421	Proposal title
observer	Dr. CXC Calibration	Principal investigator
object	MKN421	Source name
ra_targ	166.113333	Observer's specified target RA [deg]
dec_targ	38.208806	Observer's specified target Dec [deg]
ra_nom	166.11229058664	Nominal RA [deg]
dec_nom	38.204197336474	Nominal Dec [deg]
roll_nom	261.77089058809	Nominal Roll [deg]
revision	1	Processing version of data
ontime	10169.281812787	[s]
lifetime	10096.610219067	Ontime multiplied by DTCOR
l2events	674175	Number of level 2 events



2 OBI

2.1 OBI

2.1.1 Images



2.1.2 Parameters

obi_num	0	Obi number	sched_exp_time	10000.000000	[s] Scheduled observation exposure time
ascdsver	10.2.2	Processing system revision	ontime	10169.281812787	[s]
caldsver	4.6.1	 	l1events	863296	Number of level 1 events
date	2014-06-27T13:58:48	Date and time of file creation	tgmethod	TGDETECT	Method used to create src1a file
revision	1	Processing version of data	zo_pos	(32737.36, 32903.38)	src1a sky pixel position

2.1.3 Events

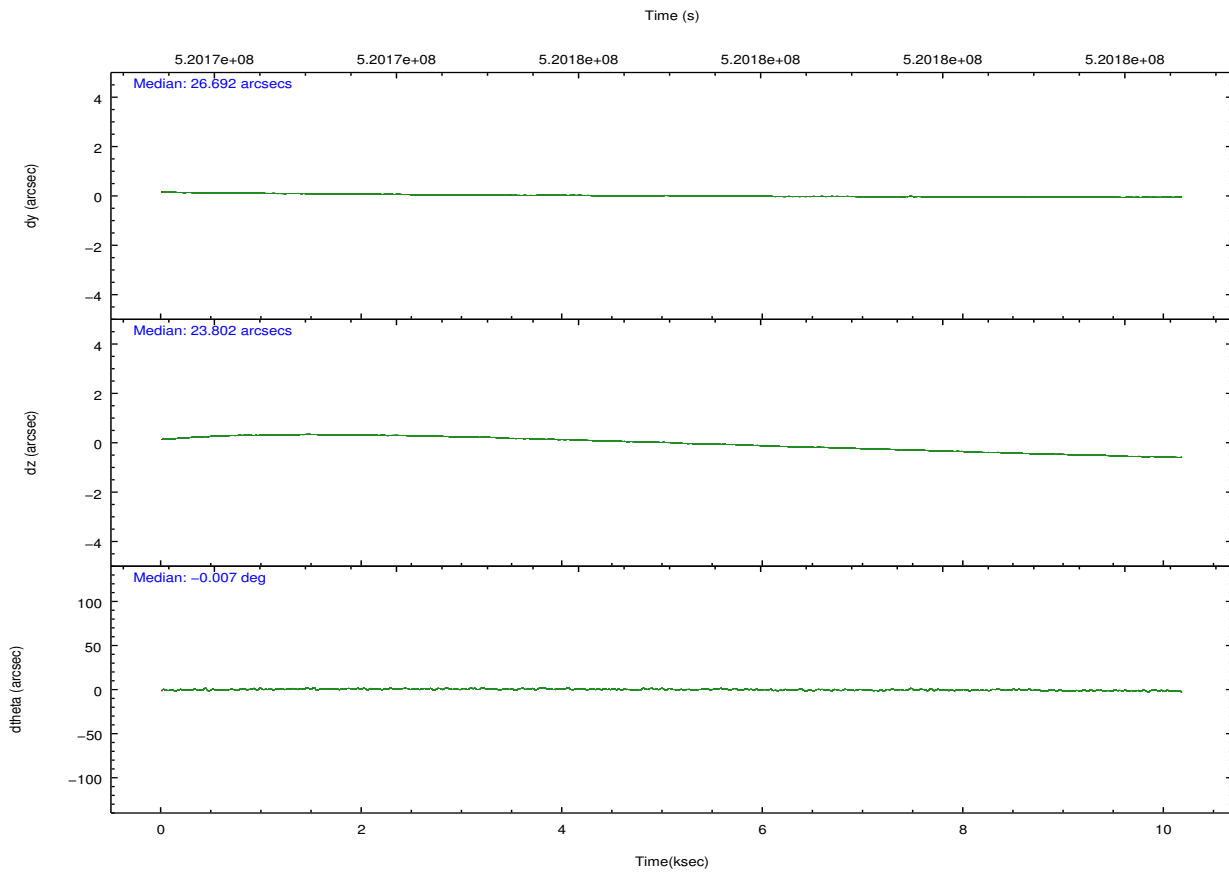
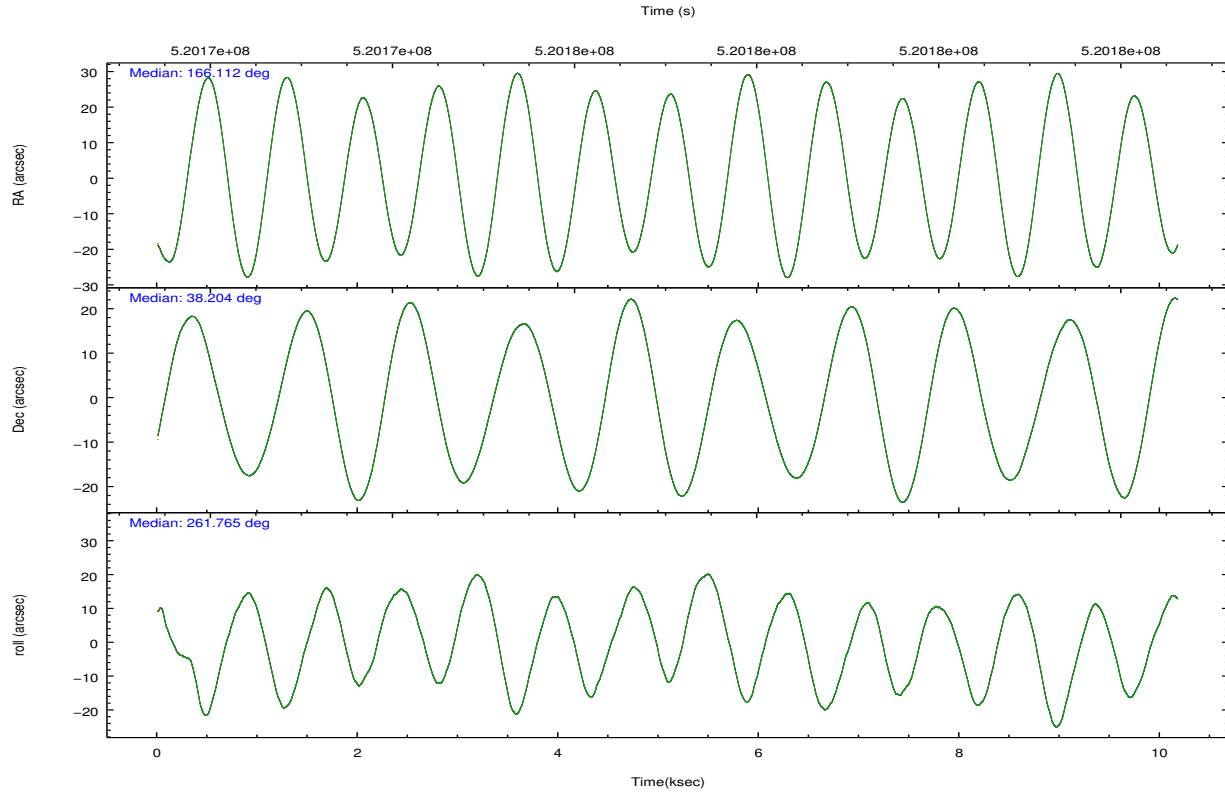
Level 1 Events

	segment 1	segment 2	segment 3
level 1 events	233245	391554	238497
rejected events	7158	9919	7366
rejected %	3%	2%	3%

2.2 Compared Parameters

Parameter	Planned	Actual	Parameter	Planned	Actual
Instrument	HRC	HRC	Obspar format version number	7	7
Detector	HRC-S	HRC-S	Obspar file type	PREDICTED	ACTUAL
Grating	LETG	LETG	Obspar update status	NONE	UPDATED
Data mode	OBSERVING	OBSERVING			
Observation mode	POINTING	POINTING			
[deg] Pointing RA	166.097156	166.1122905866368			
[deg] Pointing Dec	38.230195	38.20419733647402			
[deg] Pointing Roll	261.712927	261.7708905880893			
[mm] SIM focus pos	-1.429586	-1.428180813131781			
[mm] SIM defocus	0.1037507710433287	0.1051558262725154			
[mm] SIM translation stage pos	250.455976	250.466033080201			
[mm] SIM translation stage offset	0	-0.01005468664627074			
[s] Observation start time (MET)	520172120.184000	520171658.34726			
Observation start date	2014-06-26T12:14:13	2014-06-26T12:07:38			
[s] Observation end time (MET)	520182120.184000	520182383.94785			
Observation end date	2014-06-26T15:00:53	2014-06-26T15:06:23			

2.3 Aspect

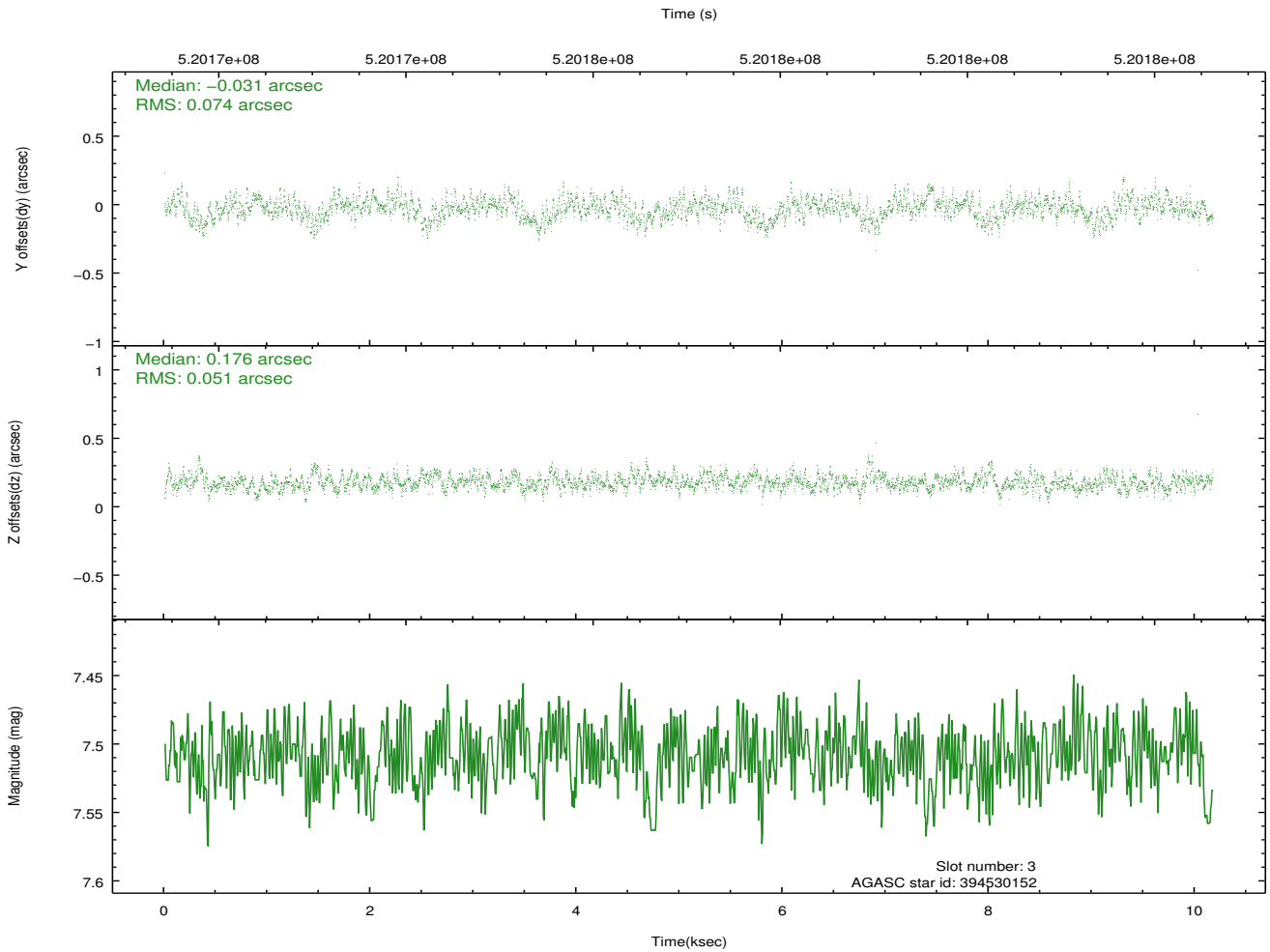
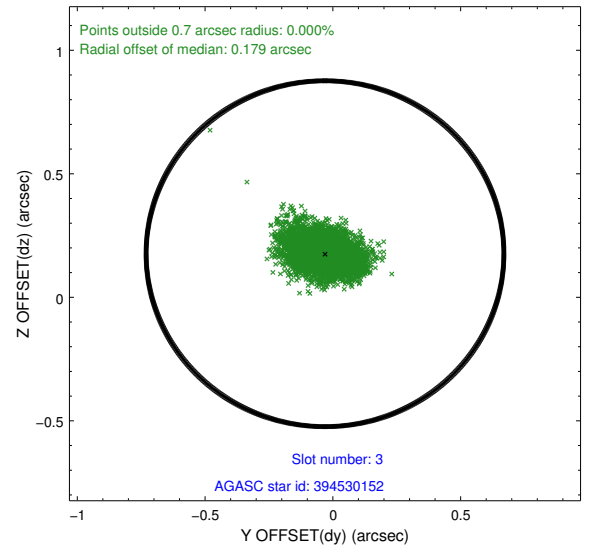
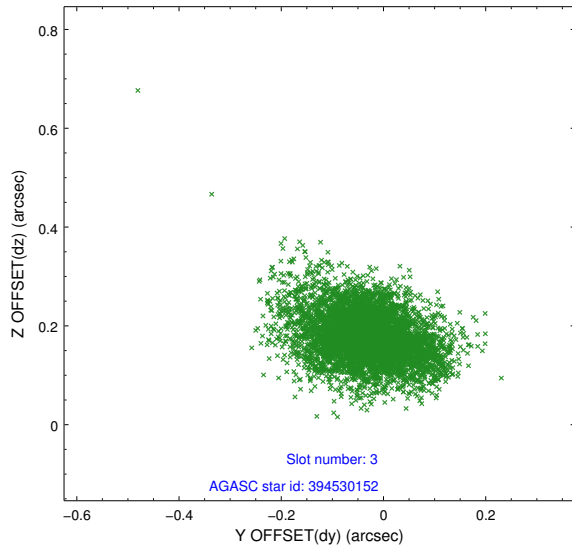


Slot Statistics

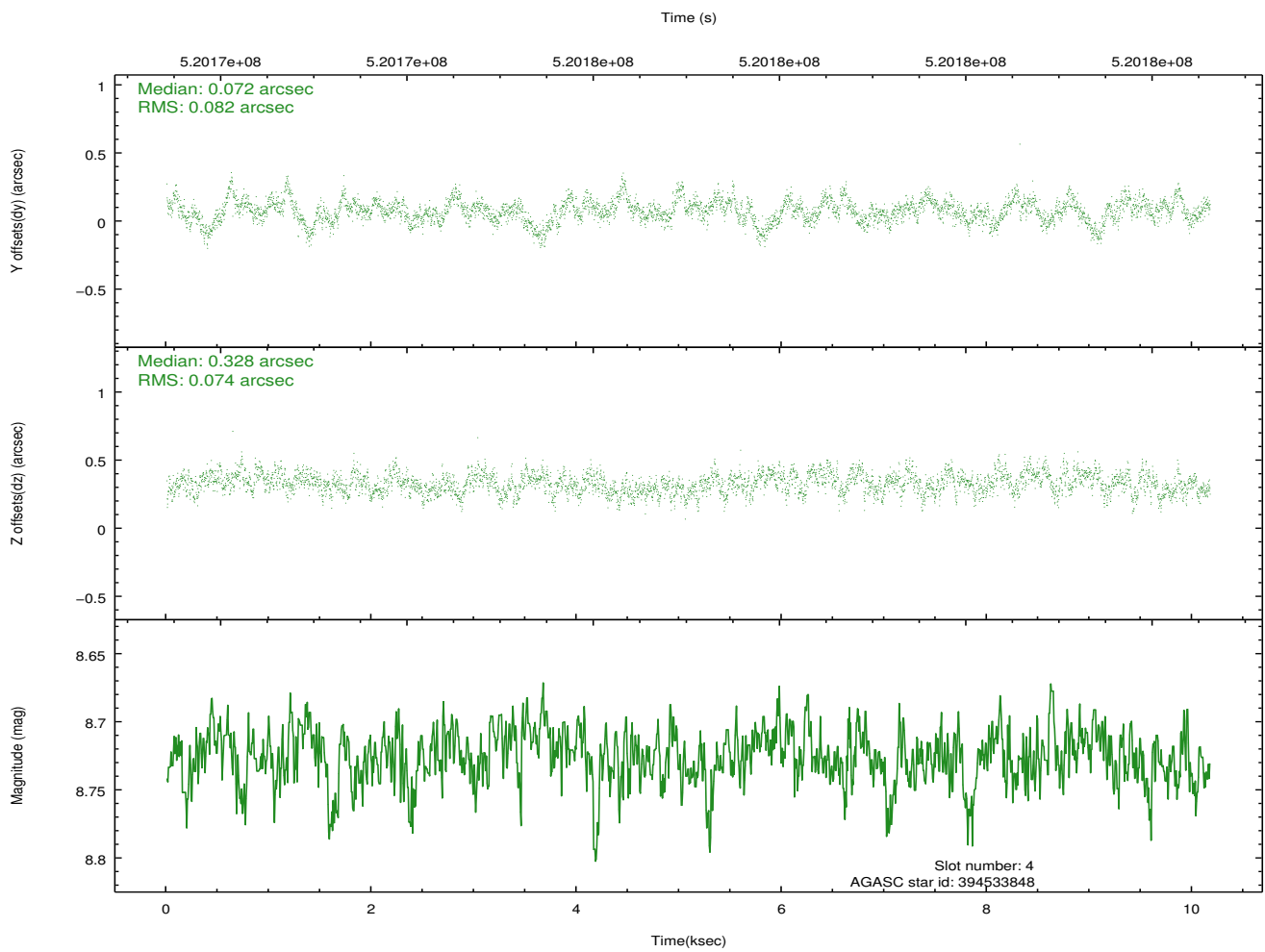
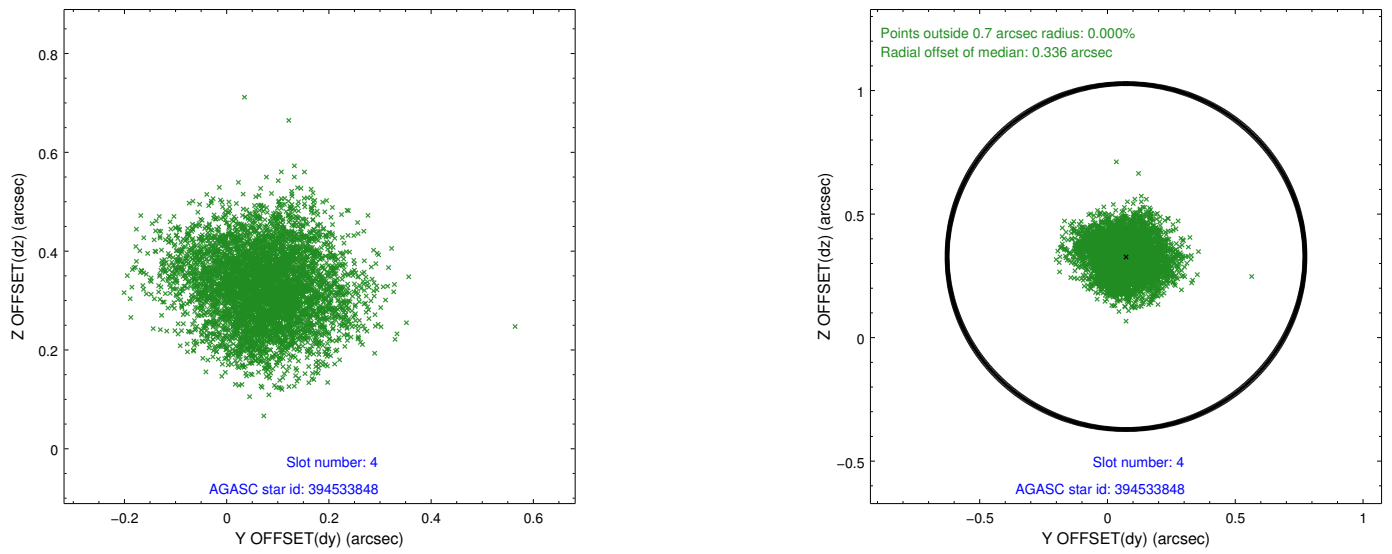
slot	status	id	mag	n_pts	med_dy	med_dz	dr1	dr2	ra	dec	mean_y	mean_z
0	FID	HRC-S-1	7.02	2481	-0.009	-0.149	0.013	0.021	0.000000	0.000000	-1181.47	-472.95
1	FID	HRC-S-2	7.00	2481	0.369	-0.142	0.006	0.012	0.000000	0.000000	1218.11	-465.65
2	FID	HRC-S-3	7.04	2481	0.030	-0.011	0.015	0.023	0.000000	0.000000	-1183.72	556.52
3	GUIDE	394530152	7.51	4960	-0.031	0.176	0.091	0.161	166.075805	38.868252	-2263.74	-389.84
4	GUIDE	394533848	8.73	4960	0.072	0.328	0.119	0.191	166.382906	38.276007	-280.82	771.02
5	GUIDE	394543960	9.78	4960	0.116	0.243	0.212	0.356	165.802757	37.787371	1697.73	-598.12
6	GUIDE	394546712	6.60	4962	-0.276	0.284	0.089	0.141	166.451462	38.394357	-729.77	903.38
7	GUIDE	394546720	6.43	4961	0.105	-1.024	0.122	0.189	166.130115	38.241361	-52.62	86.13

2.4 Star Slots

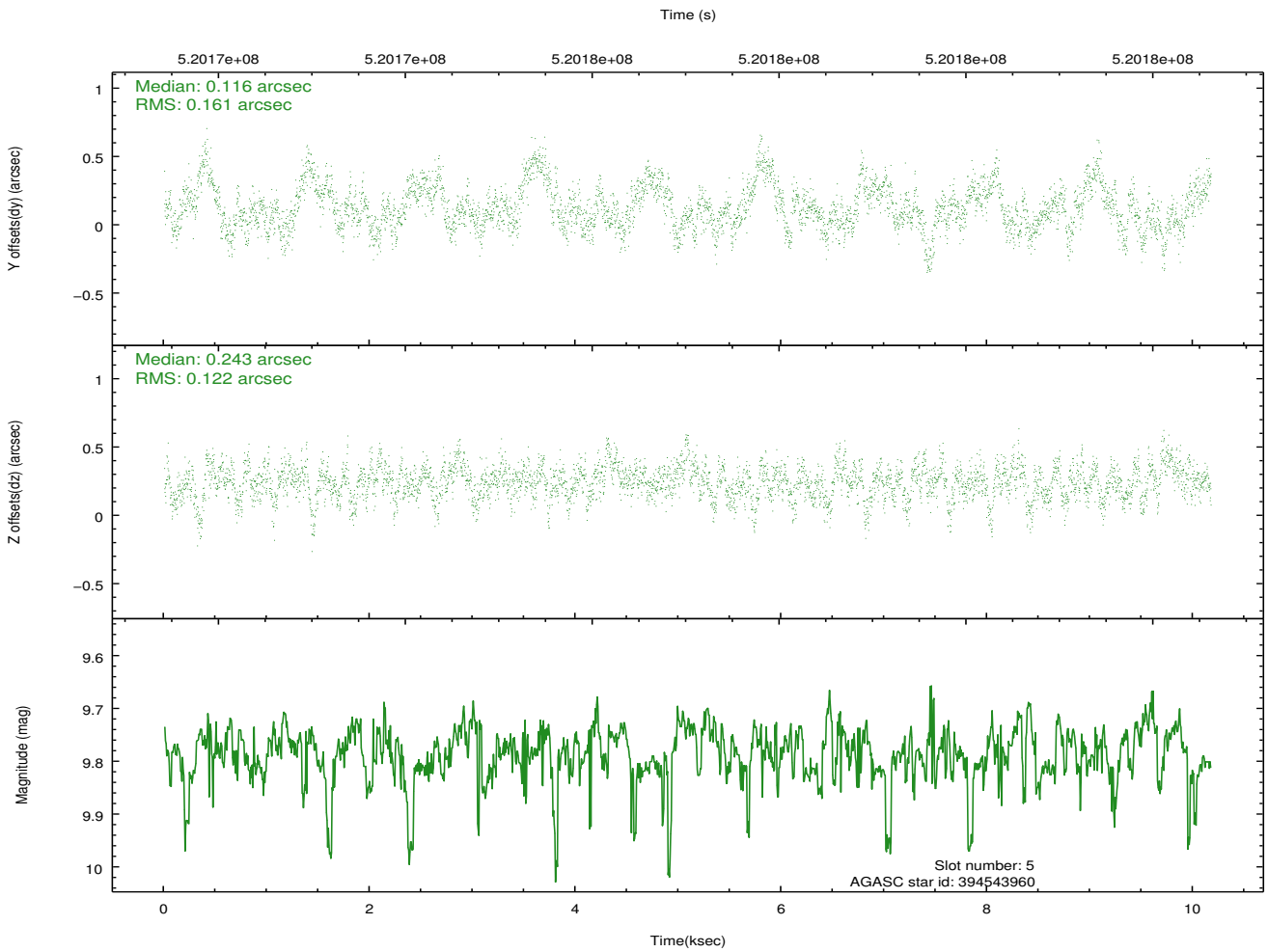
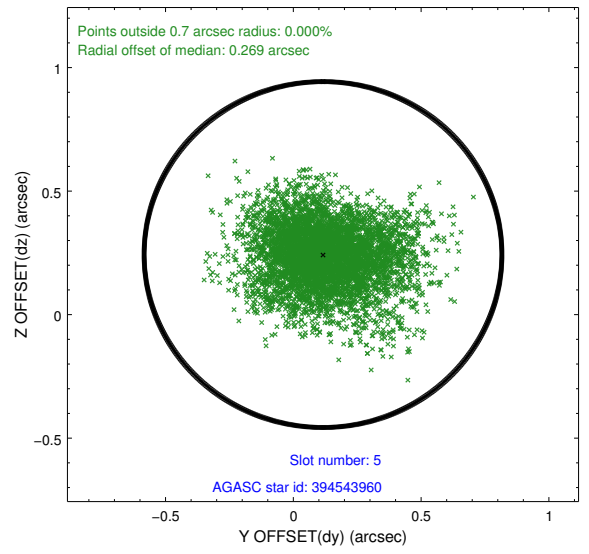
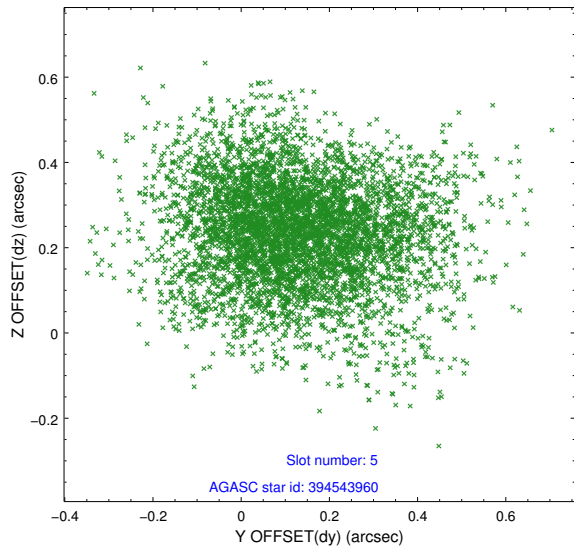
2.4.1 Slot 3



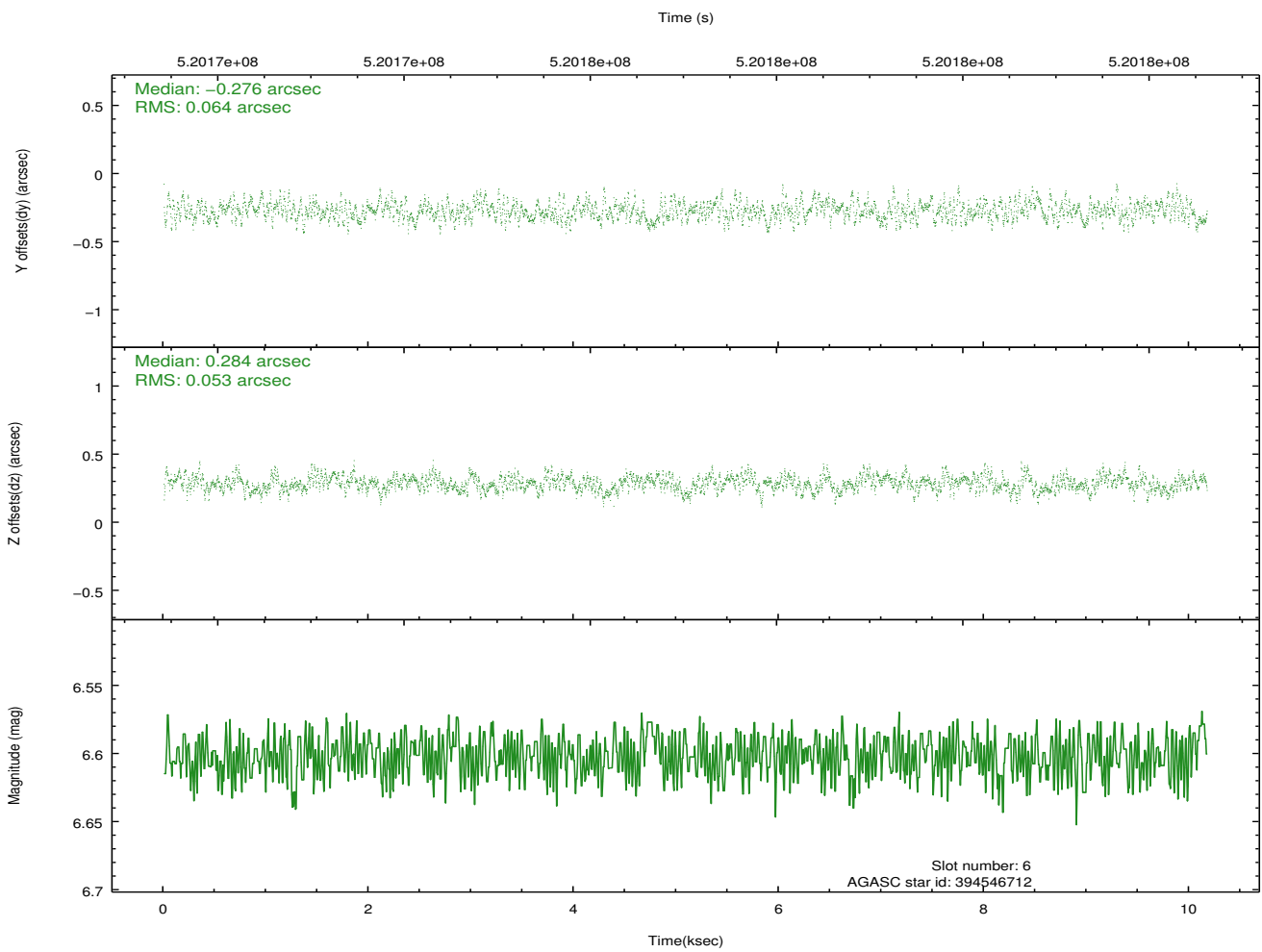
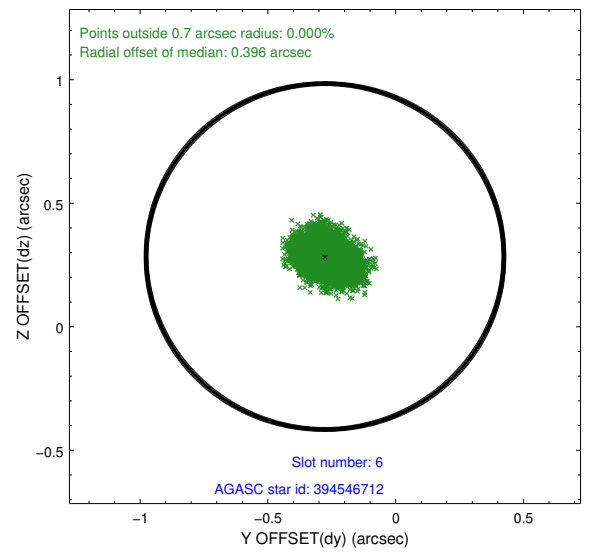
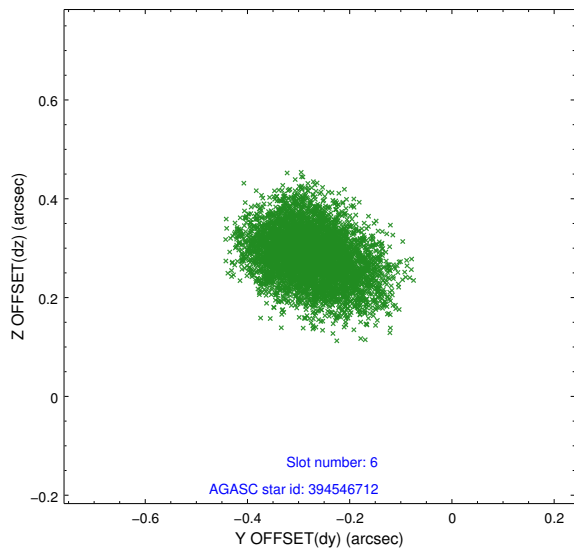
2.4.2 Slot 4



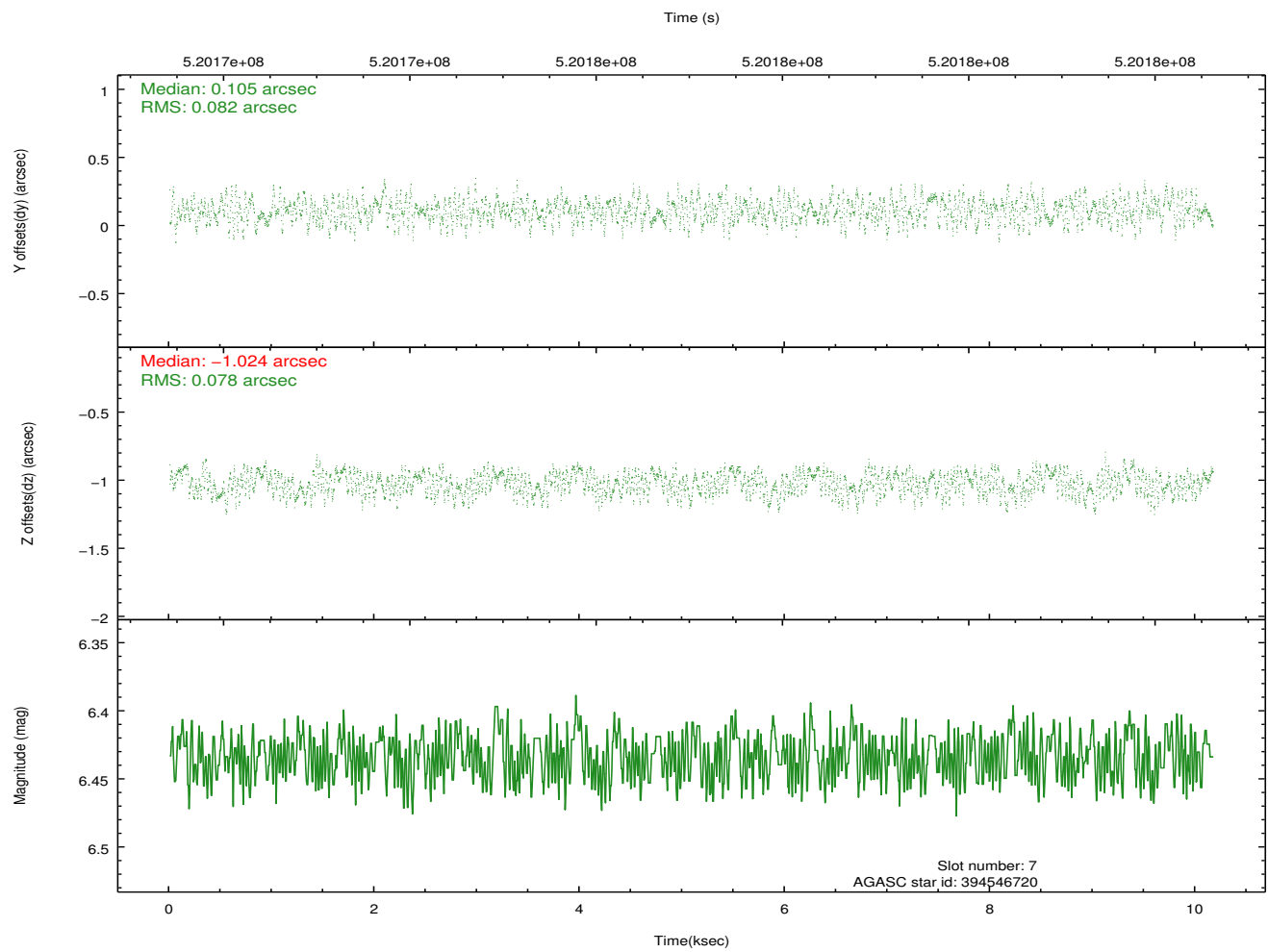
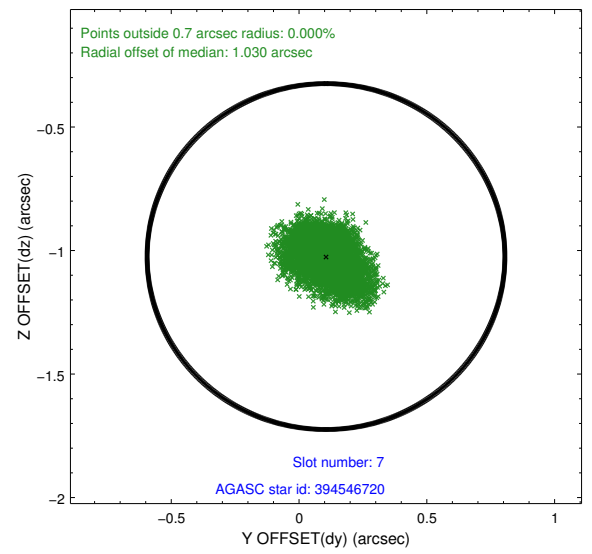
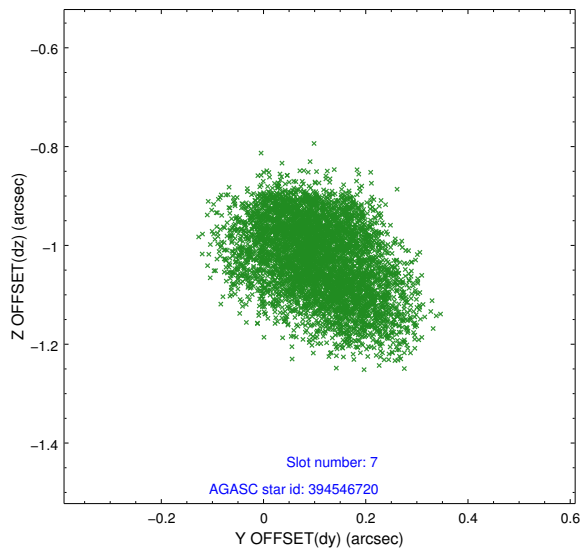
2.4.3 Slot 5



2.4.4 Slot 6

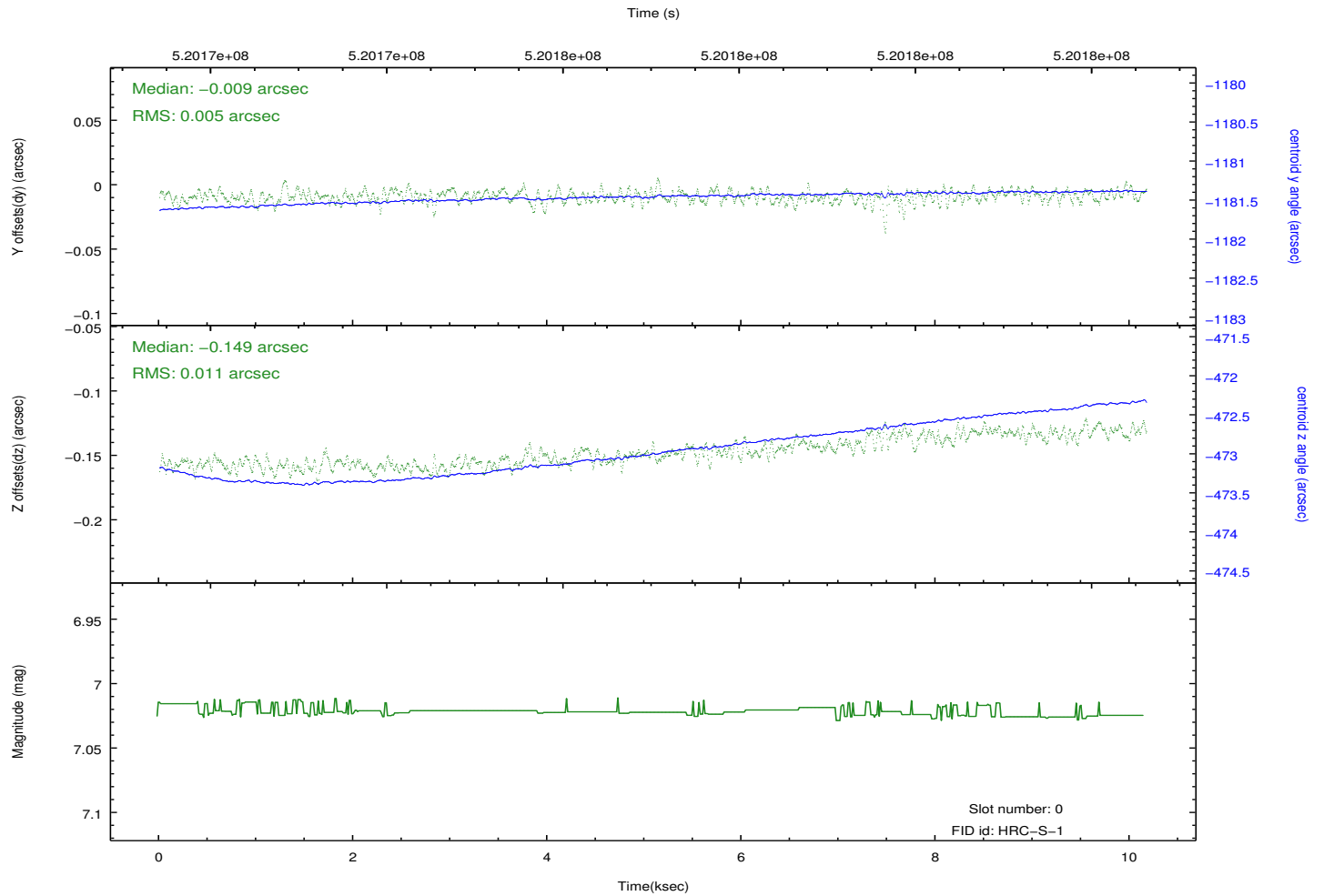
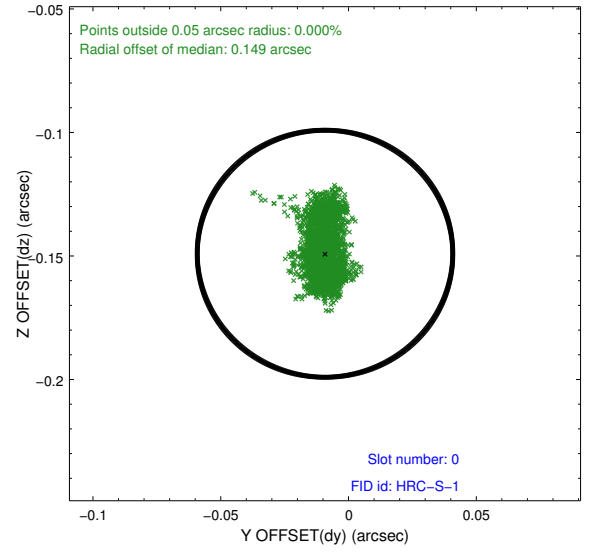
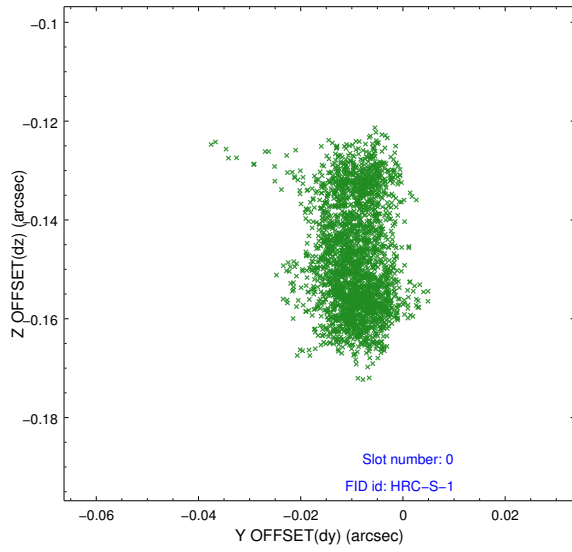


2.4.5 Slot 7

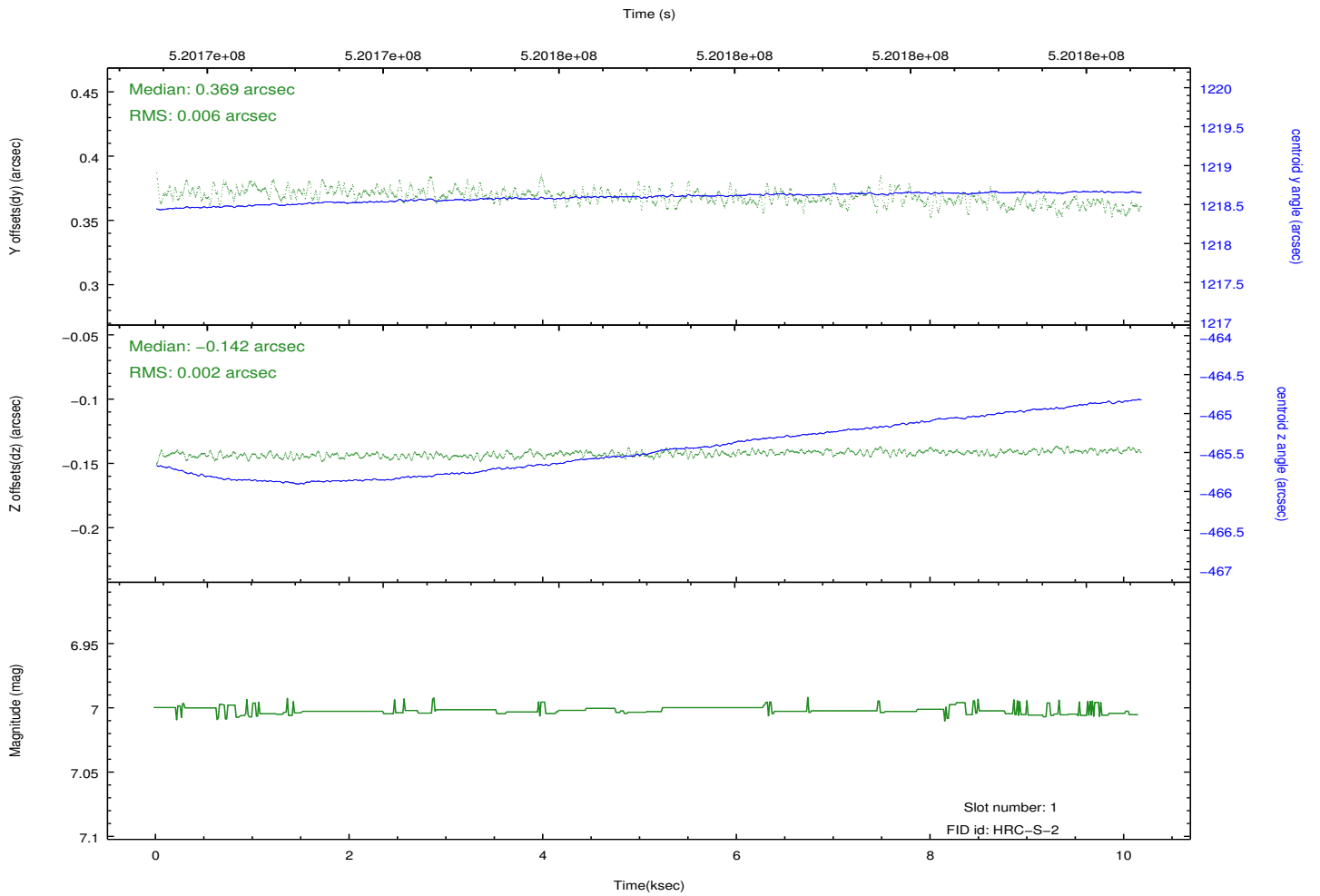
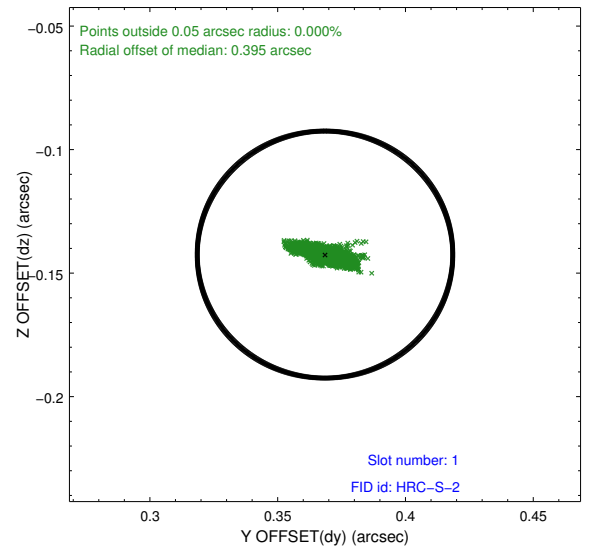
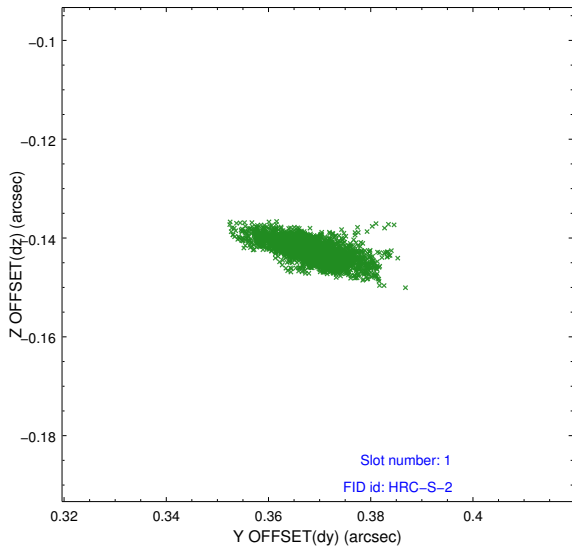


2.5 FID Slots

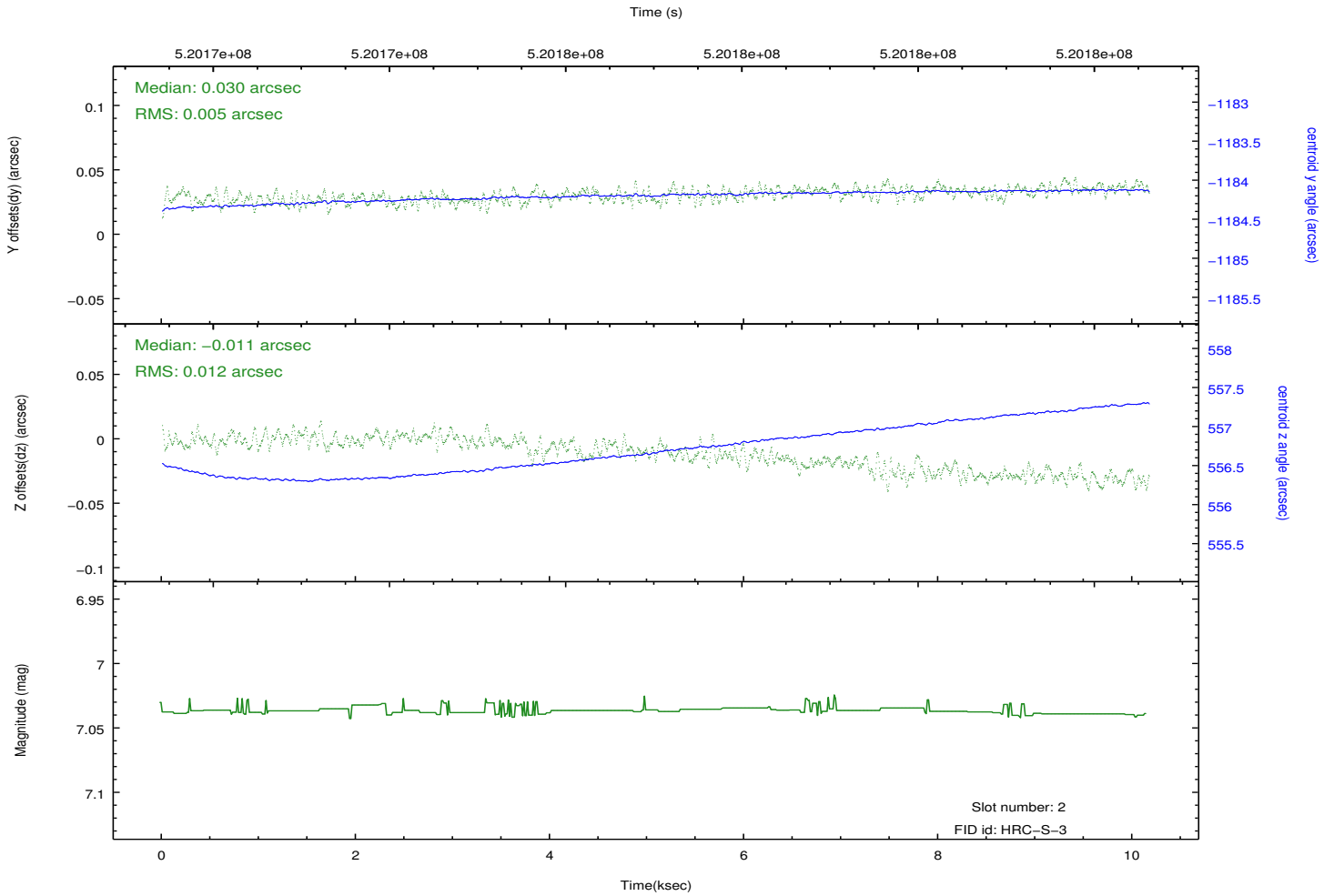
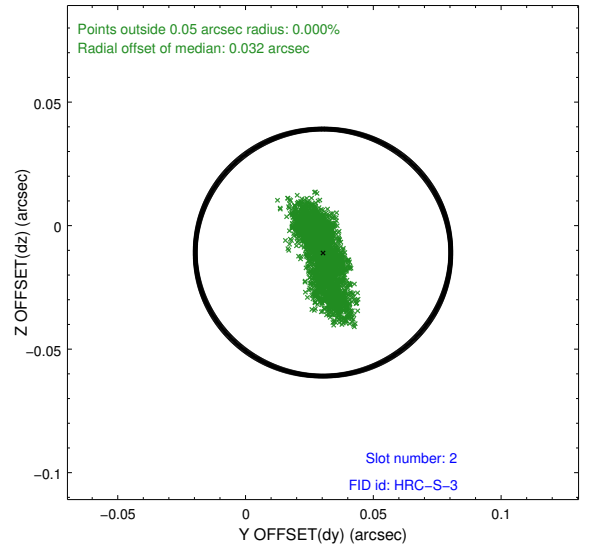
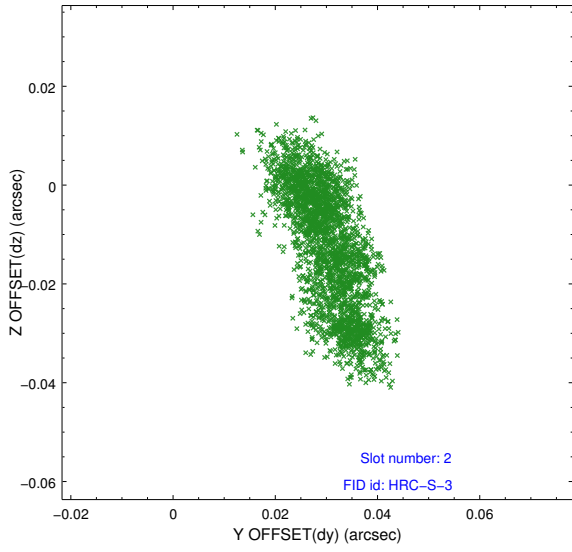
2.5.1 Slot 0



2.5.2 Slot 1

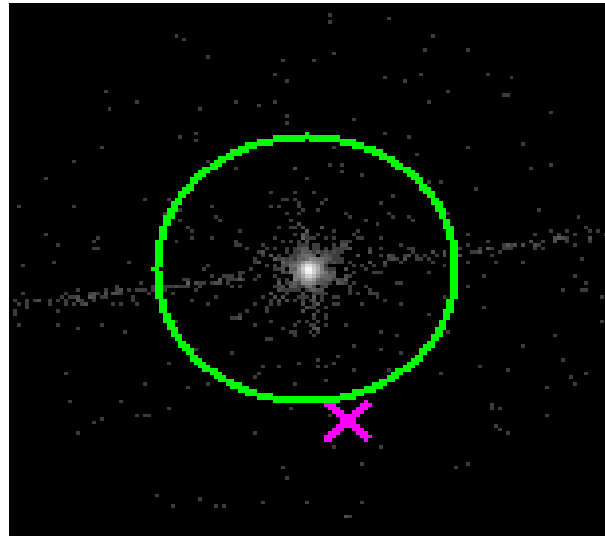


2.5.3 Slot 2

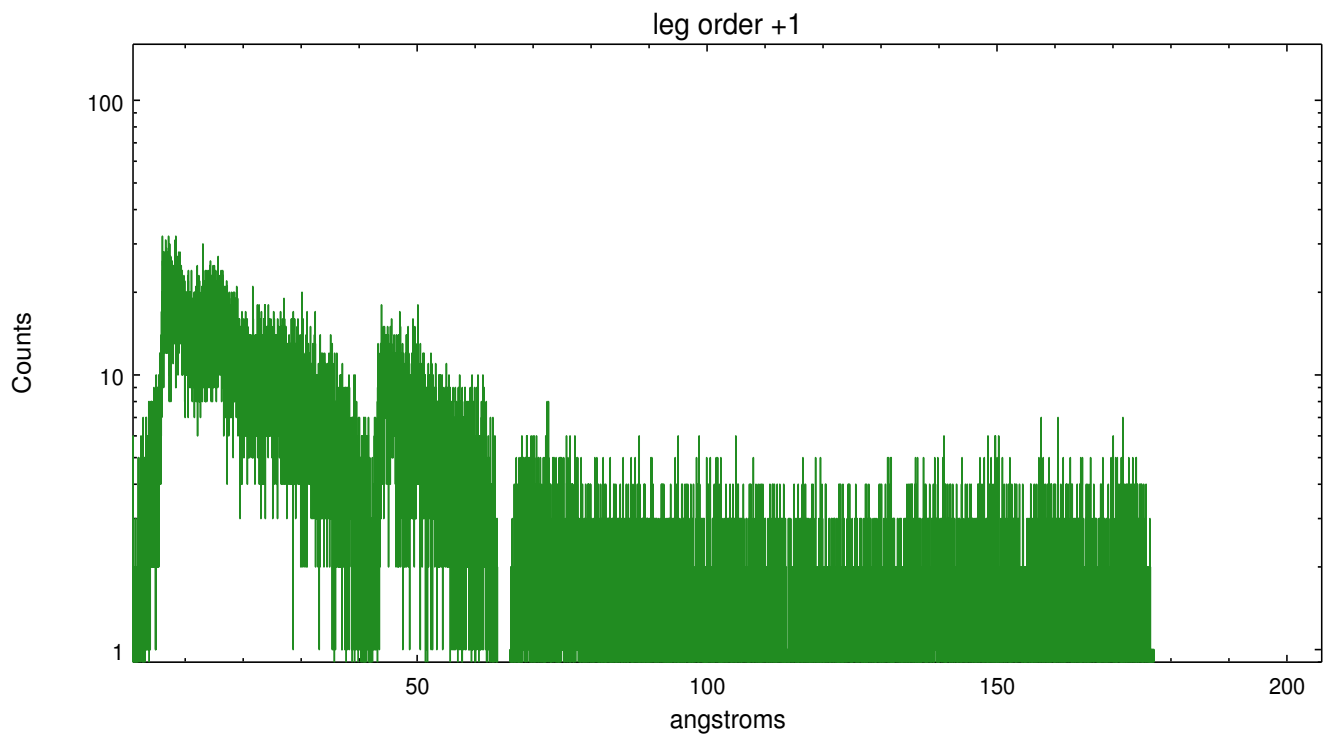
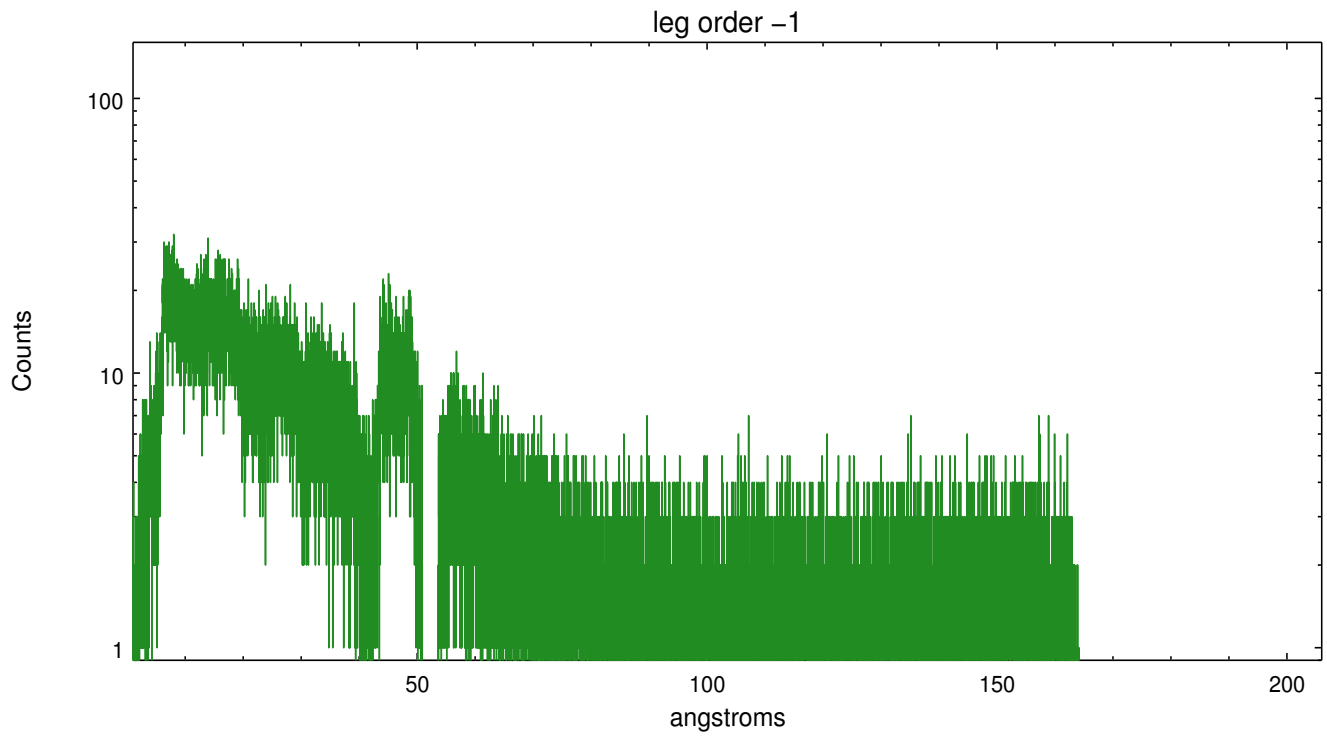


3 Gratings

3.1 LETG Arm



LETG Zero Order



A Summary

A.1 Status

V&V Scientist	David Huenemoerder
V&V Date (YYYY-MM-DD)	2014.06.27
V&V Edition	1
V&V Disposition and Status	OK
V&V Charge Time	10.169281812787

A.2 Comments