

V&V Reference Report

L2 ASCDS Version : 10.2.1

Observation 16580 - L2 Version 2
Chandra X-Ray Center

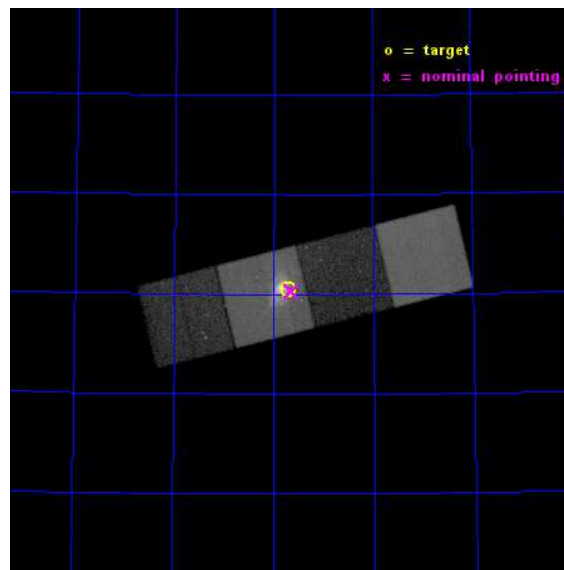
L2 Processing Date : Dec 10 2014

Contents

1	Front	2
2	OBI	3
2.1	OBI	3
2.1.1	Images	3
2.1.2	Bias	3
2.1.3	Parameters	4
2.1.4	Events	4
2.2	Compared Parameters	5
2.3	Aspect	6
2.4	Star Slots	9
2.4.1	Slot 3	9
2.4.2	Slot 4	10
2.4.3	Slot 5	11
2.4.4	Slot 6	12
2.4.5	Slot 7	13
2.5	FID Slots	14
2.5.1	Slot 0	14
2.5.2	Slot 1	15
2.5.3	Slot 2	16
A	Summary	17
A.1	Status	17
A.2	Comments	17

1 Front

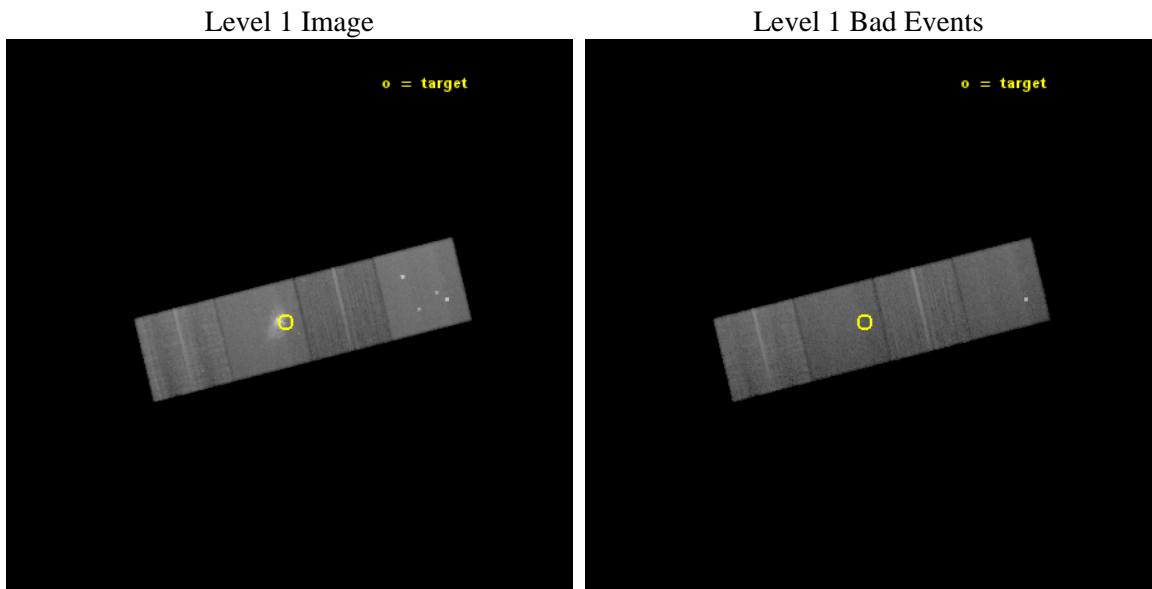
seq_num	502269	Sequence number
obs_id	16580	Observation id
title	X-rays to probe the environment and the progenitor of Type Ia SN2014J	Proposal title
observer	Dr Raffaella Margutti	Principal investigator
object	SN2014J	Source name
dtcycle	0	
cycle	P	events from which exps? Prim/Second/Both
ra_targ	148.925417	Observer's specified target RA [deg]
dec_targ	69.673889	Observer's specified target Dec [deg]
ra_nom	148.91156496291	Nominal RA [deg]
dec_nom	69.671600512524	Nominal Dec [deg]
roll_nom	166.12989113525	Nominal Roll [deg]
revision	2	Processing version of data
ontime	47465.954349458	Sum of GTIs [s]
livetime	46845.776711955	Livetime [s]
ontime5	47465.913309455	Sum of GTIs [s]
ontime6	47465.872269452	Sum of GTIs [s]
ontime7	47465.954349458	Sum of GTIs [s]
ontime8	47462.69020927	Sum of GTIs [s]
l2events	496582	Number of level 2 events



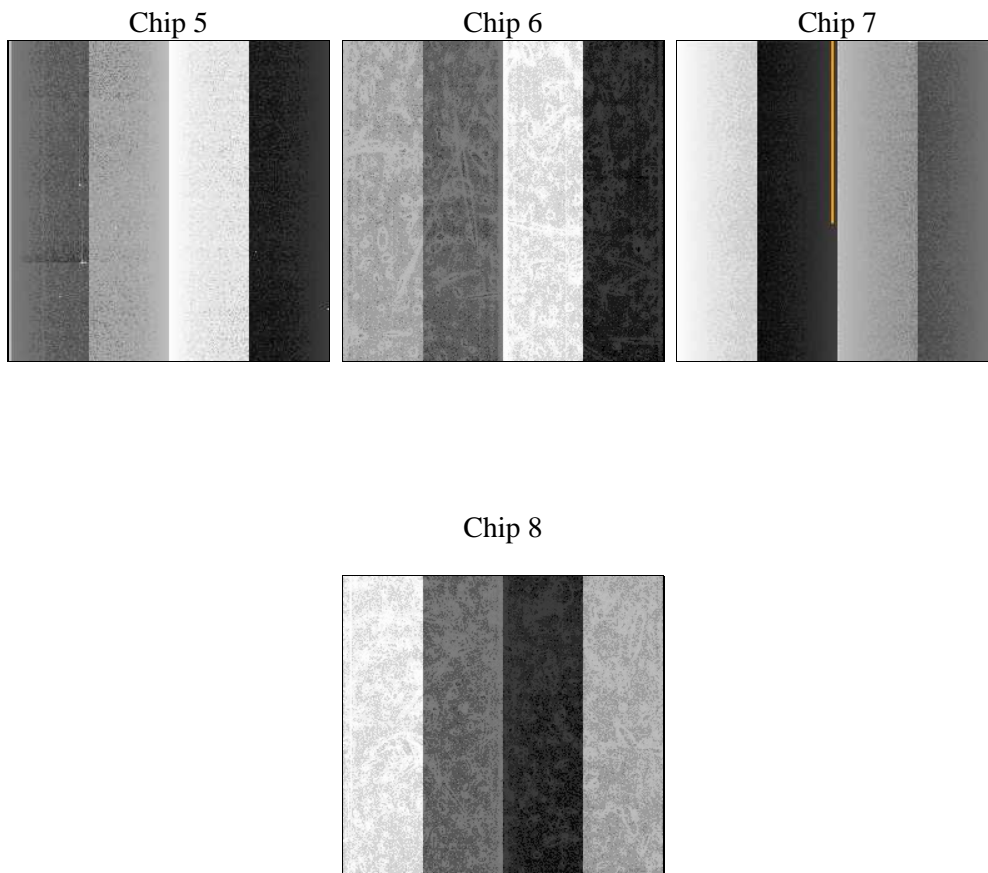
2 OBI

2.1 OBI

2.1.1 Images



2.1.2 Bias



2.1.3 Parameters

obi_num	0	Obi number	sched_exp_time	47394.047000	[s] Scheduled observation exposure time
ascdsver	10.3.1	Processing system revision	ontime	47465.954349458	Sum of GTIs [s]
caldbver	4.6.4	 	ontime5	47465.913309455	Sum of GTIs [s]
date	2014-12-10T04:45:46	Date and time of file creation	ontime6	47465.872269452	Sum of GTIs [s]
revision	2	Processing version of data	ontime7	47465.954349458	Sum of GTIs [s]
			ontime8	47462.69020927	Sum of GTIs [s]
			l1events	1381924	Number of level 1 events

2.1.4 Events

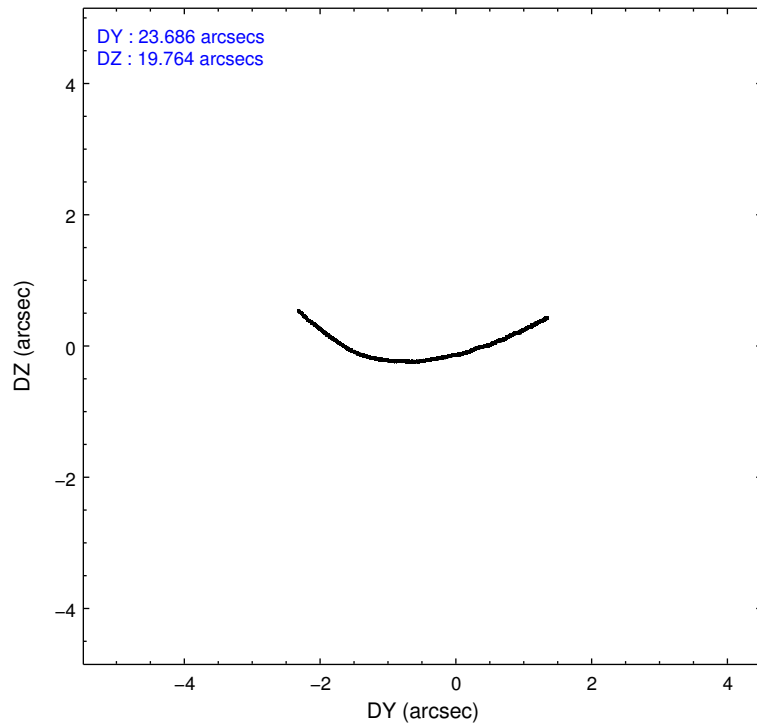
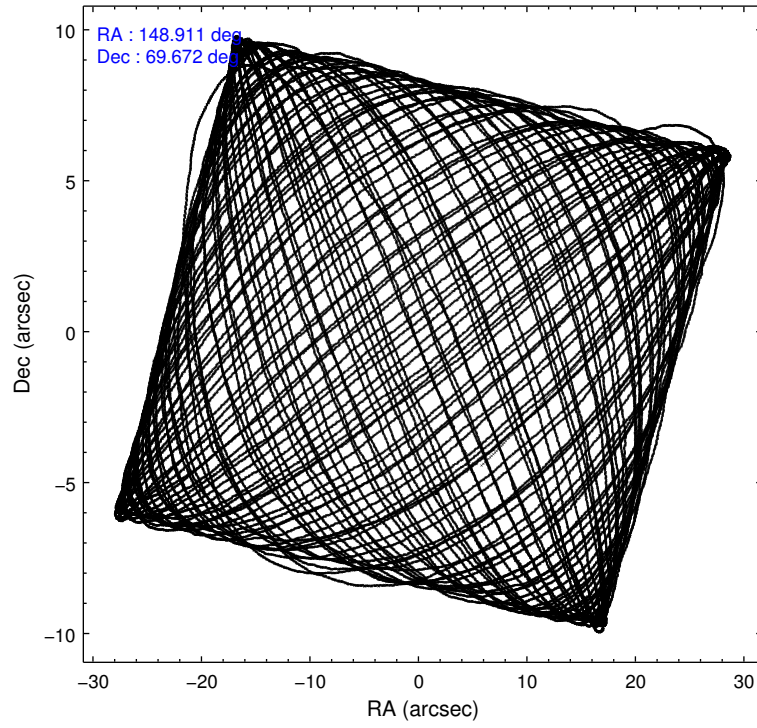
	ccd 5	ccd 6	ccd 7	ccd 8
level 1 events	398837	229087	453001	300999
rejected events	199873	198796	177593	217079
rejected %	50%	86%	39%	72%

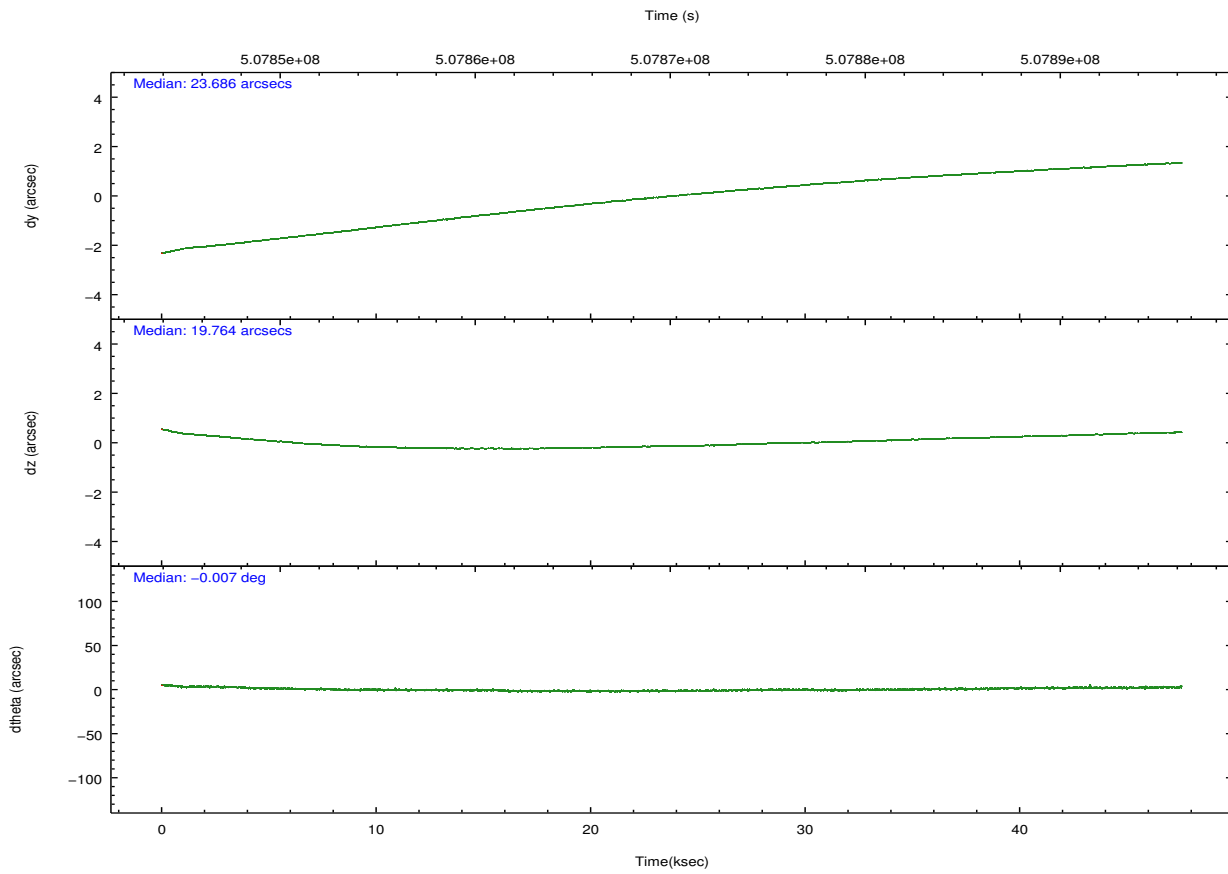
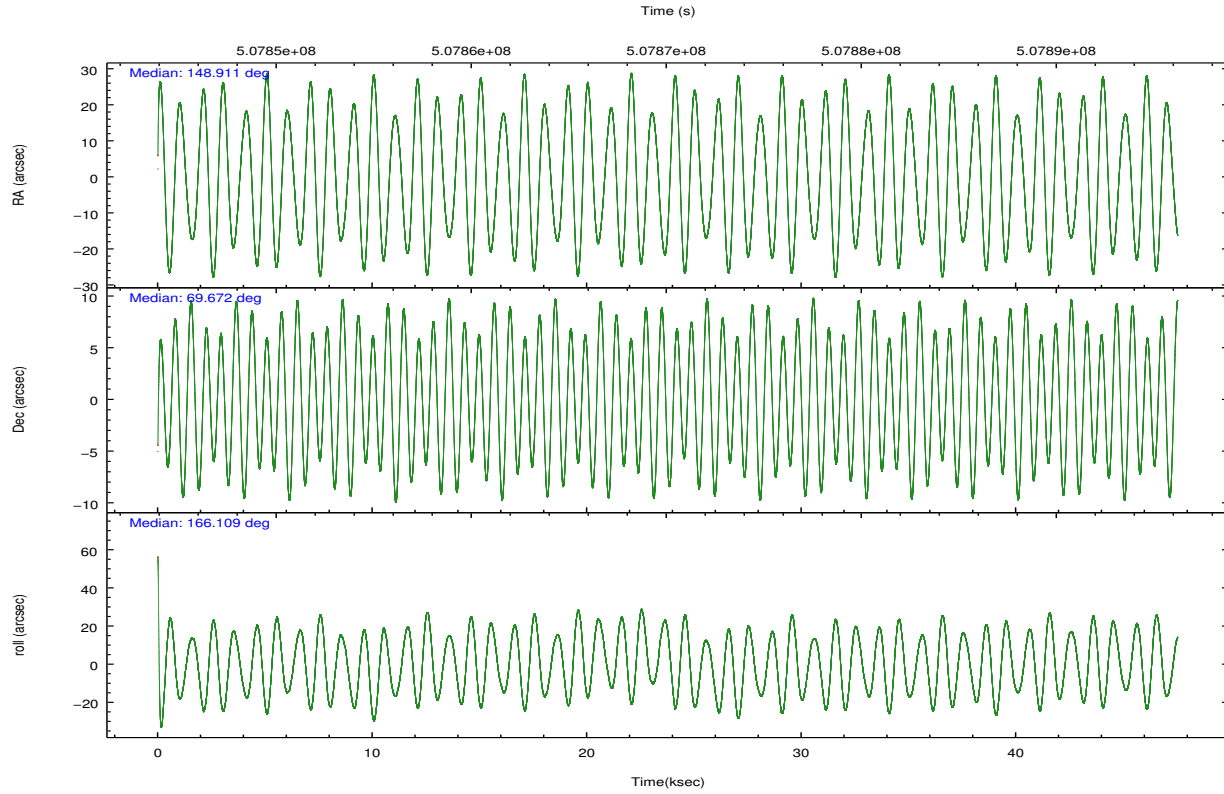
	ccd 5	ccd 6	ccd 7	ccd 8
grade 0 events	31033	11179	53539	25044
	7%	4%	11%	8%
grade 1 events	585	107	700	210
	0%	0%	0%	0%
grade 2 events	58426	6531	64916	19230
	14%	2%	14%	6%
grade 3 events	6565	2831	27947	9071
	1%	1%	6%	3%
grade 4 events	6250	2865	27270	8549
	1%	1%	6%	2%
grade 5 events	28086	11941	34005	17281
	7%	5%	7%	5%
grade 6 events	96700	6886	101749	22028
	24%	3%	22%	7%
grade 7 events	171192	186747	142875	199586
	42%	81%	31%	66%

2.2 Compared Parameters

Parameter	Planned	Actual	Parameter	Planned	Actual
Instrument	ACIS	ACIS	Obspar format version number	7	7
Detector	ACIS-5678	ACIS-5678	Obspar file type	PREDICTED	ACTUAL
Grating	NONE	NONE	Obspar update status	NONE	UPDATED
Data mode	VFAINT	VFAINT	Number of optional ACIS chips dropped	0	0
Observation mode	POINTING	POINTING	On-chip summing requested	N	N
[deg] Pointing RA	148.986881	148.9115649629081	Subarray requested	NONE	NONE
[deg] Pointing Dec	69.679531	69.67160051252432	Alternating exposures requested	N	N
[deg] Pointing Roll	165.902620	166.1298911352538	[s] Primary exposure time	0.000000	3.1
[mm] SIM focus pos	-0.684267	-0.6828225247311905			
[mm] SIM defocus	0	0.001444936568705701			
[mm] SIM translation stage pos	-190.132523	-190.1400660498719			
[mm] SIM translation stage offset	0	0.00754346686406393			
[s] Observation start time (MET)	507846465.184000	507845439.19227			
Observation start date	2014-02-03T20:26:38	2014-02-03T20:10:39			
[s] Observation end time (MET)	507893859.184000	507894085.18239			
Observation end date	2014-02-04T09:36:32	2014-02-04T09:41:25			
Read mode	TIMED	TIMED			

2.3 Aspect



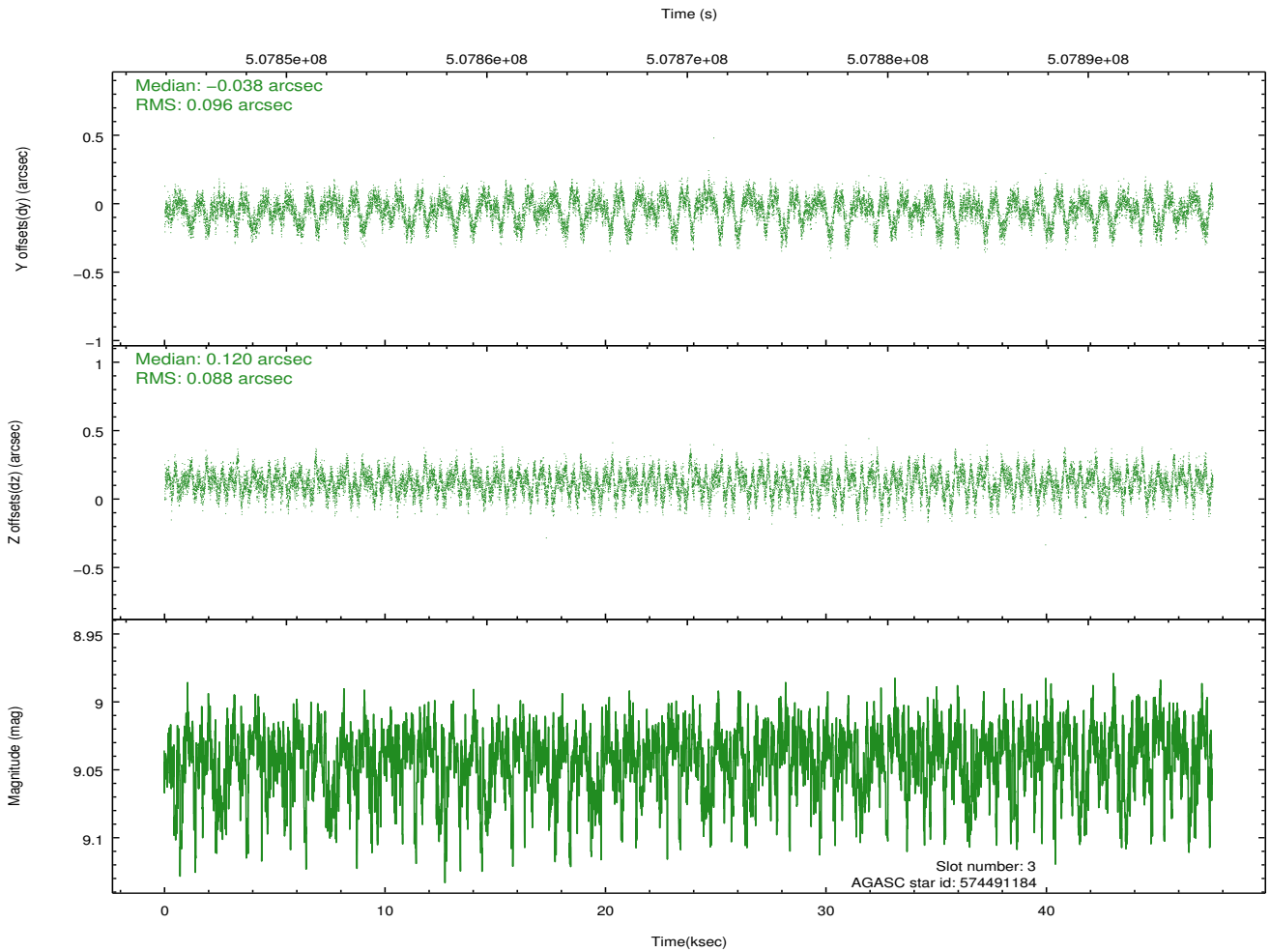
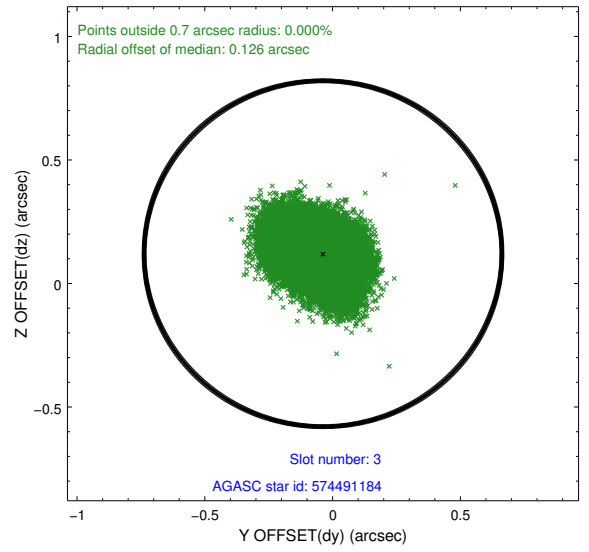
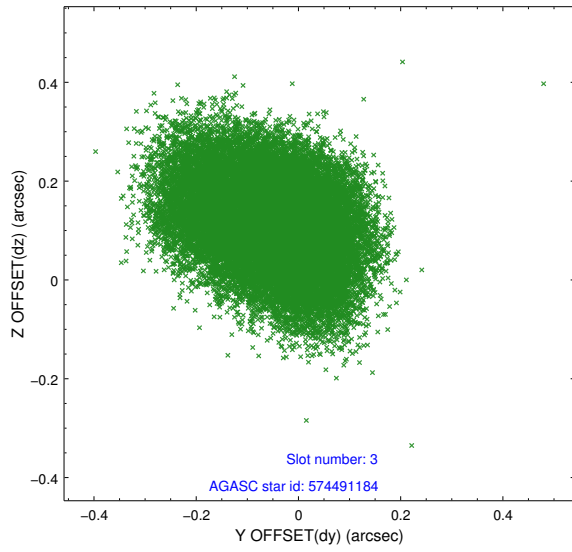


Slot Statistics

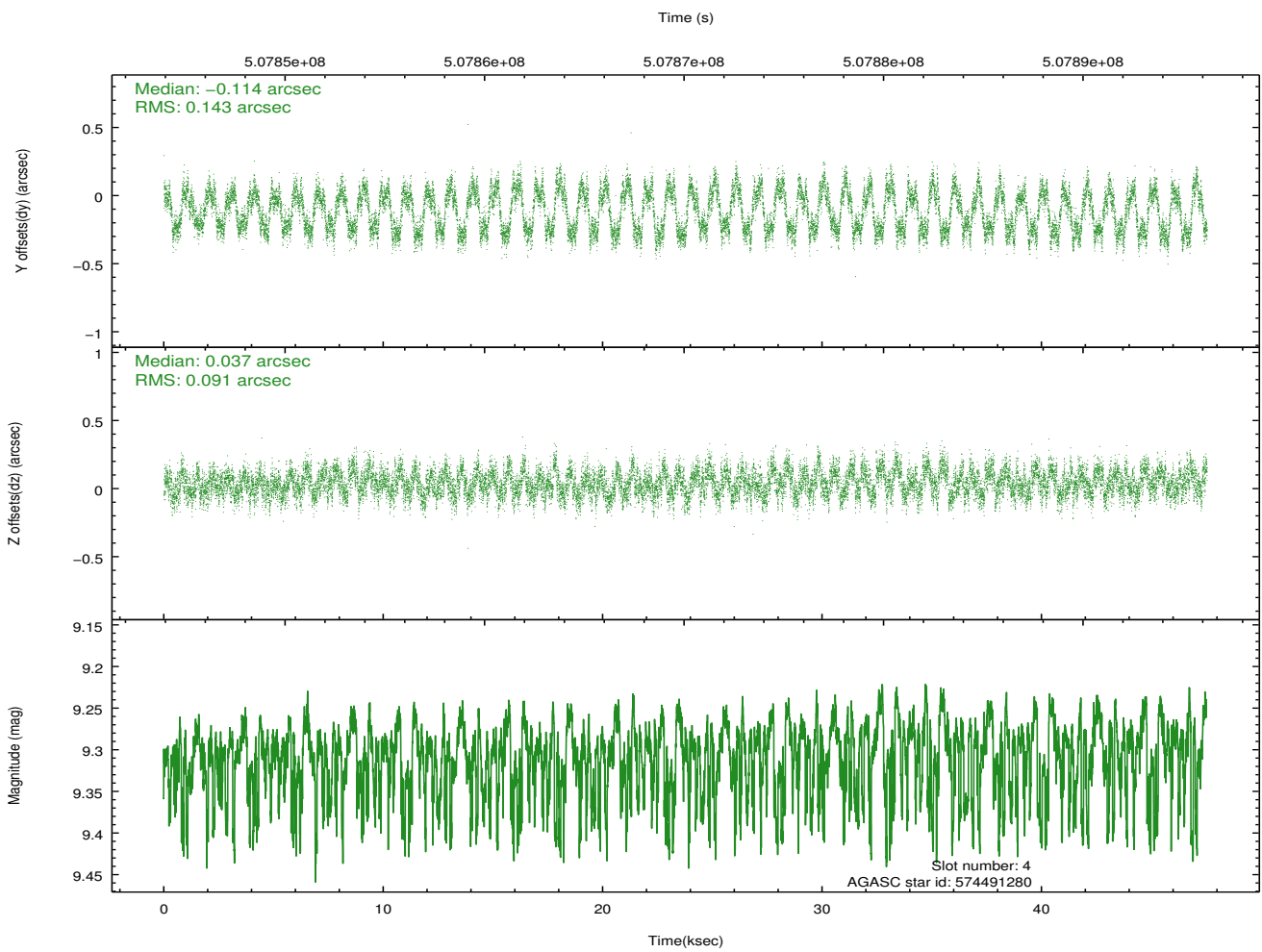
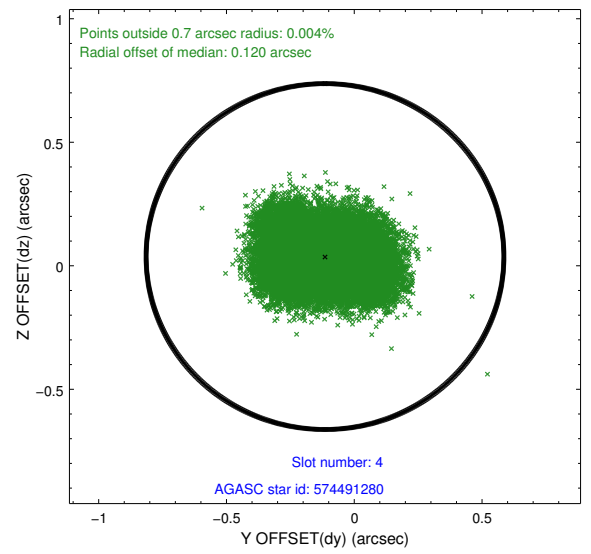
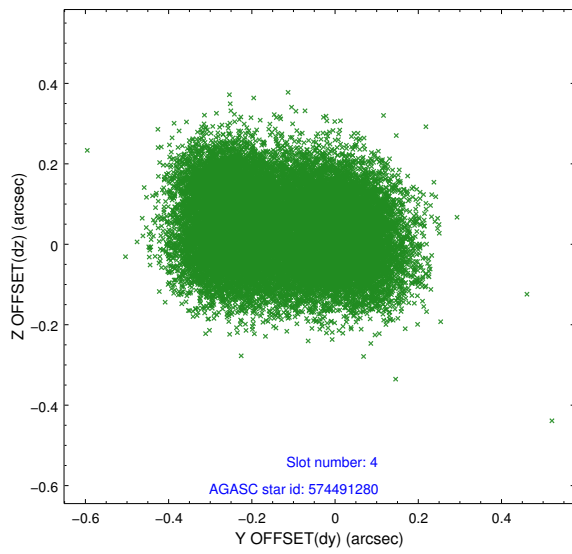
slot	status	used	id	mag	n_pts	med_dy	med_dz	dr1	dr2	ra	dec	mean_y	mean_z
0	FID		ACIS-S-1	7.07	11596	0.185	-0.050	0.010	0.024	0.000000	0.000000	919.57	-1736.95
1	FID		ACIS-S-2	6.99	11596	-0.128	0.012	0.020	0.029	0.000000	0.000000	-776.66	-1741.49
2	FID		ACIS-S-5	7.10	11596	-0.078	0.043	0.020	0.029	0.000000	0.000000	-1829.90	160.62
3	GUIDE	used	574491184	9.04	23185	-0.038	0.120	0.141	0.222	148.582453	69.768699	566.92	-190.23
4	GUIDE	used	574491280	9.30	23178	-0.114	0.037	0.186	0.267	148.611567	69.450135	260.11	916.75
5	GUIDE	used	574491872	9.25	23168	-0.076	-0.357	0.167	0.251	147.207613	69.765453	2230.80	213.08
6	GUIDE	used	574885216	8.53	23184	0.115	0.086	0.111	0.191	147.834547	70.411352	1994.89	-2228.68
7	GUIDE	used	574886496	8.50	23183	0.128	0.122	0.084	0.136	148.945563	70.041136	367.17	-1250.54

2.4 Star Slots

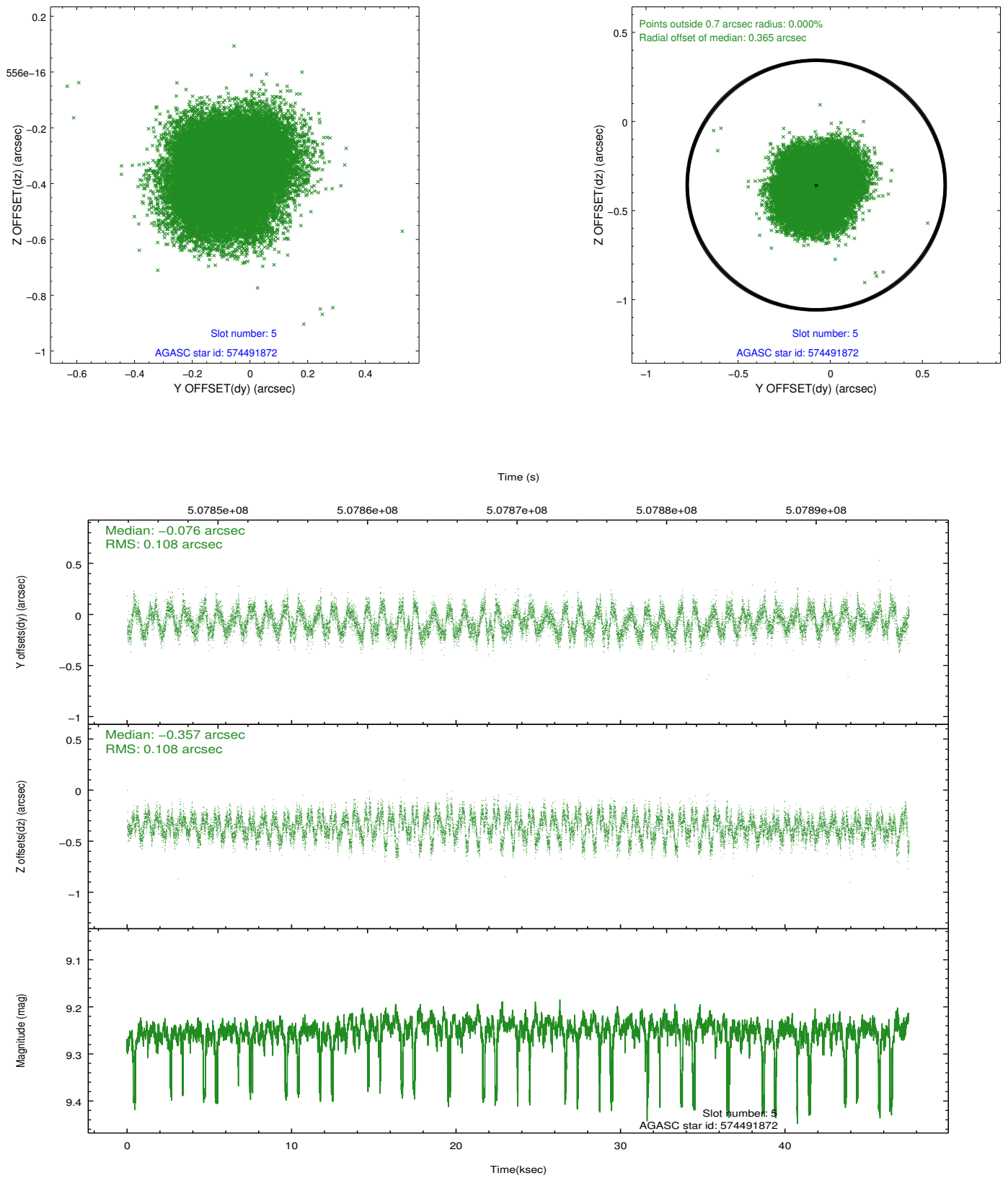
2.4.1 Slot 3



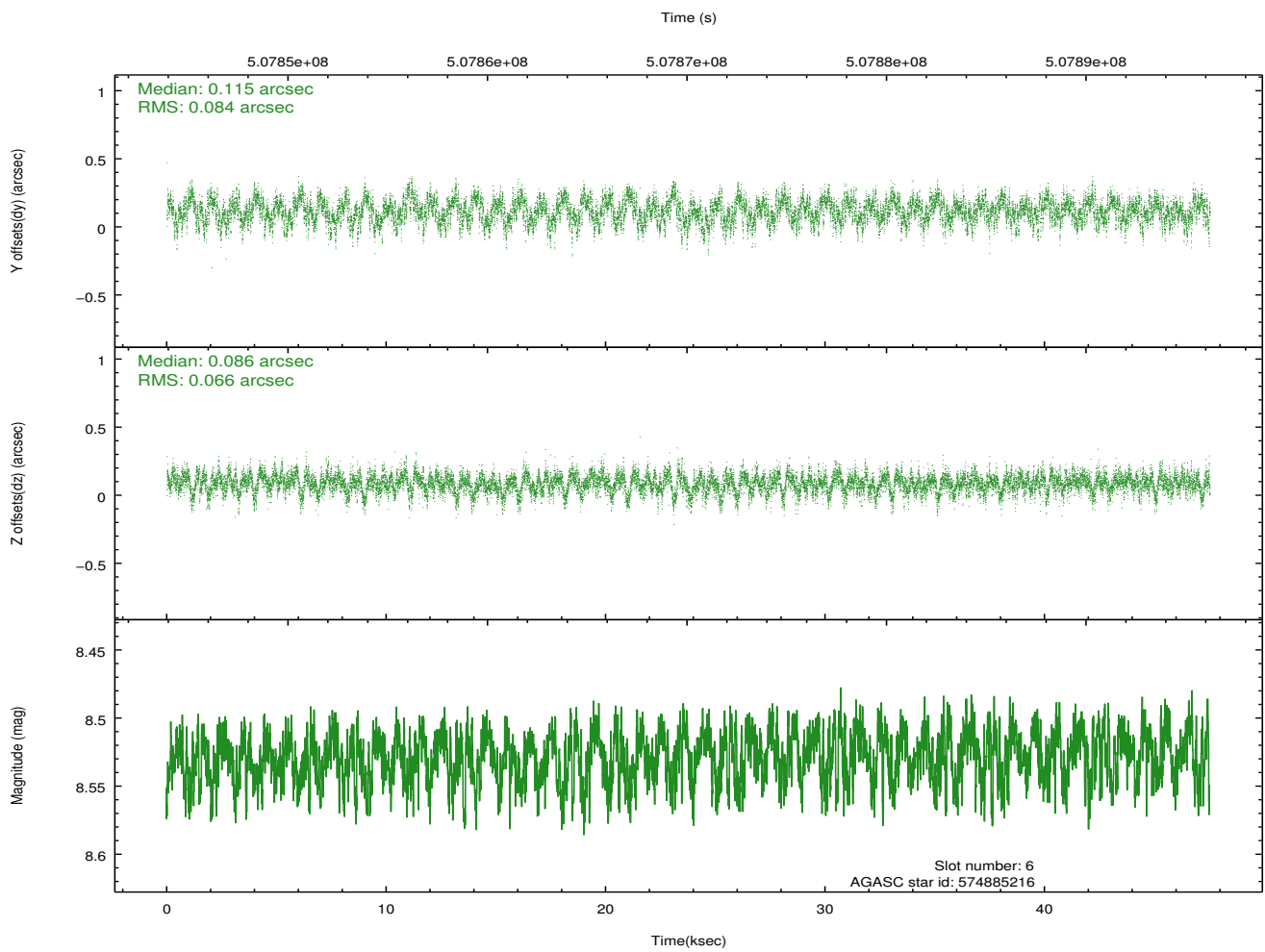
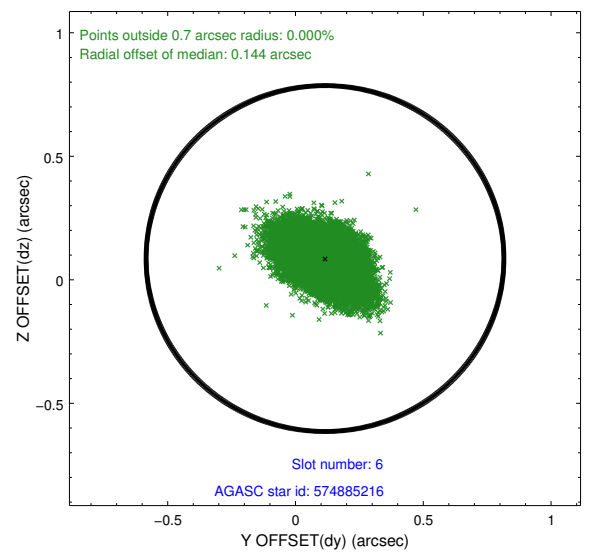
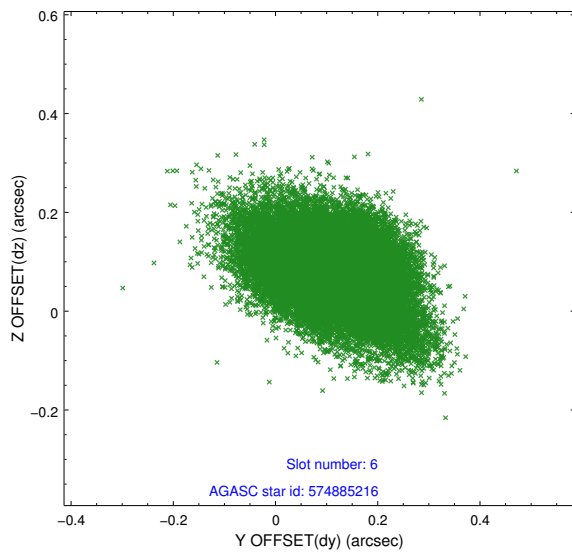
2.4.2 Slot 4



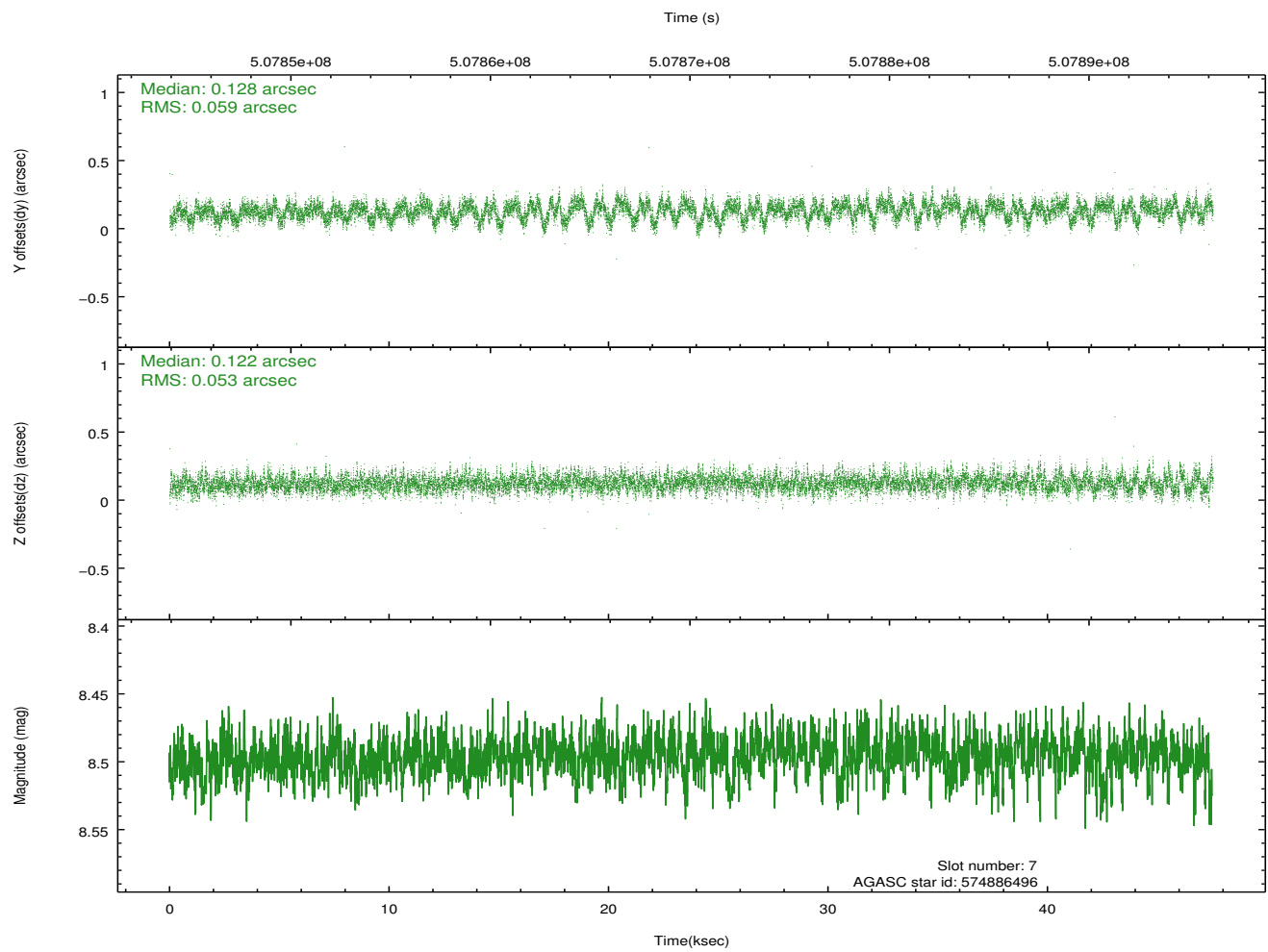
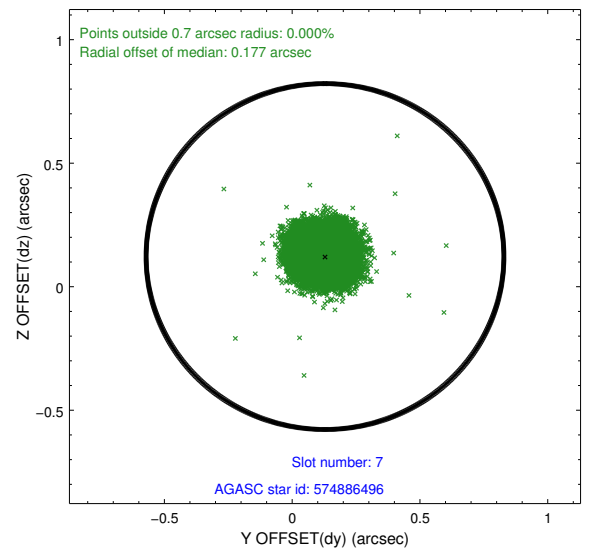
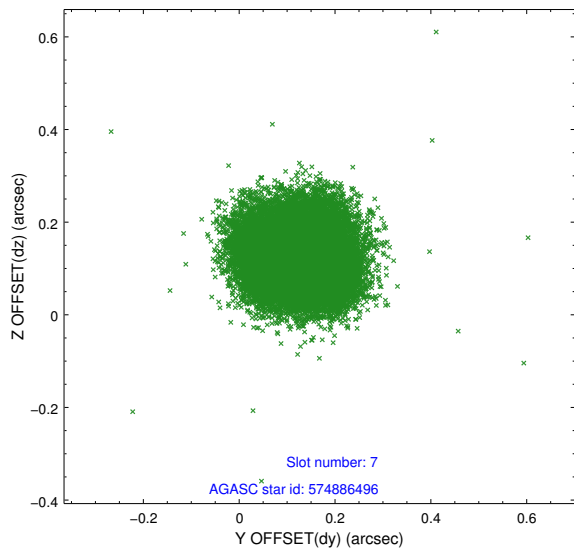
2.4.3 Slot 5



2.4.4 Slot 6

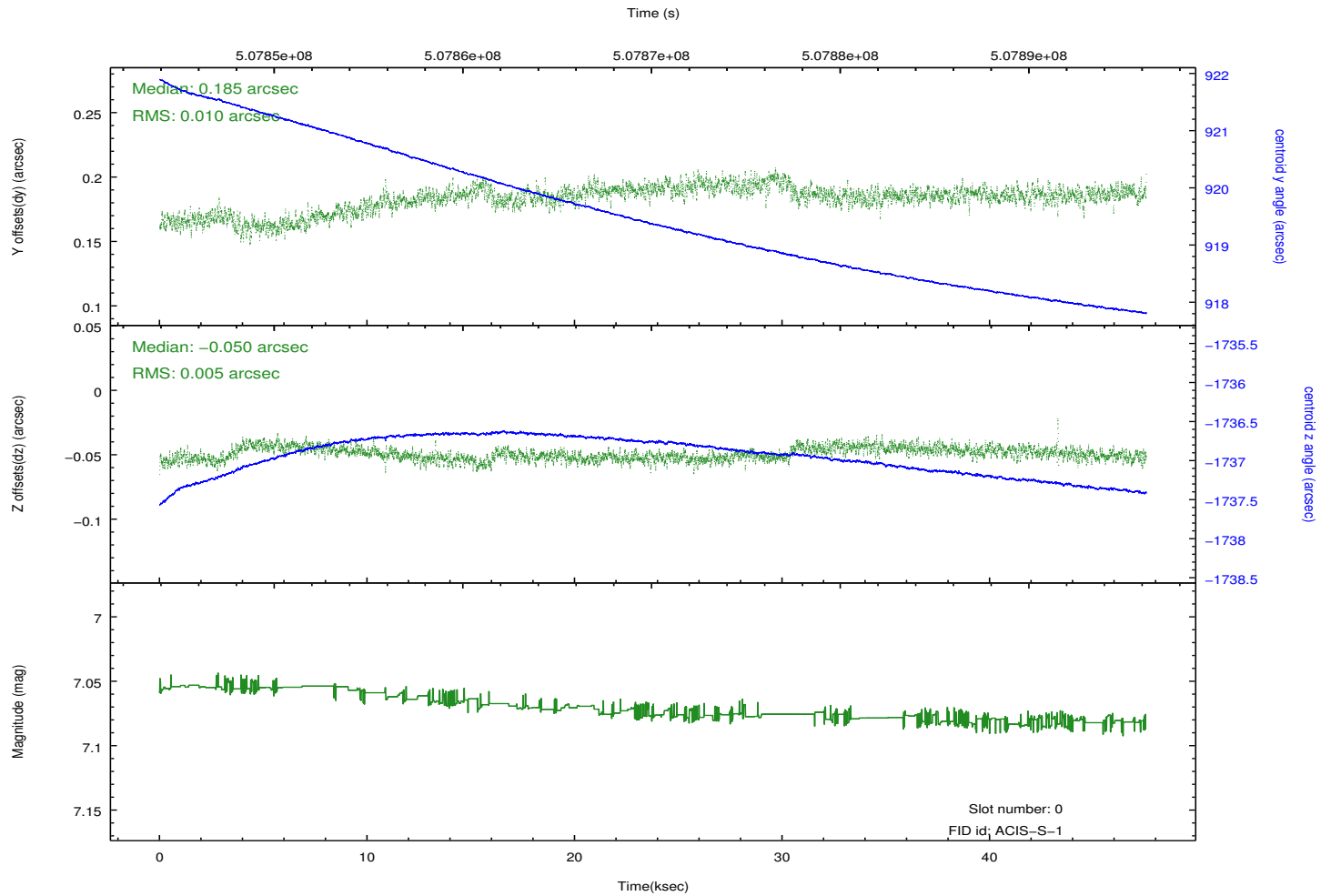
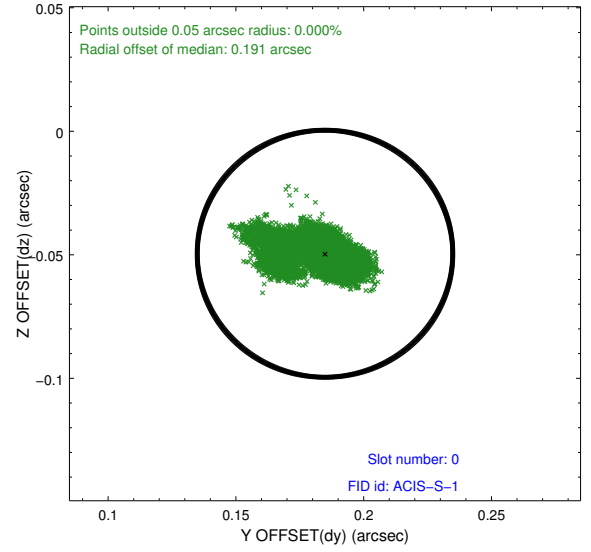
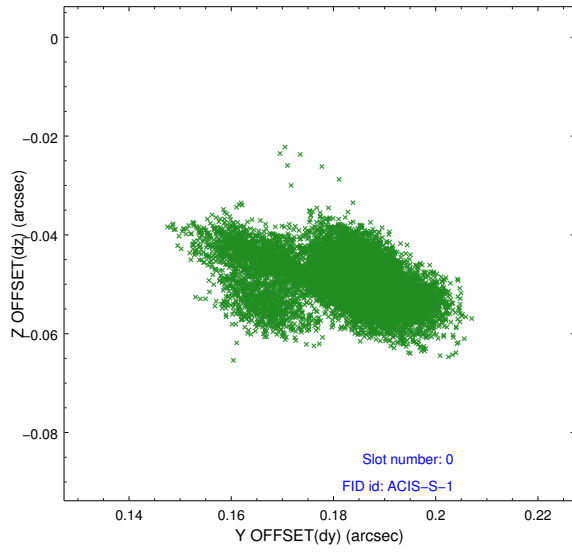


2.4.5 Slot 7

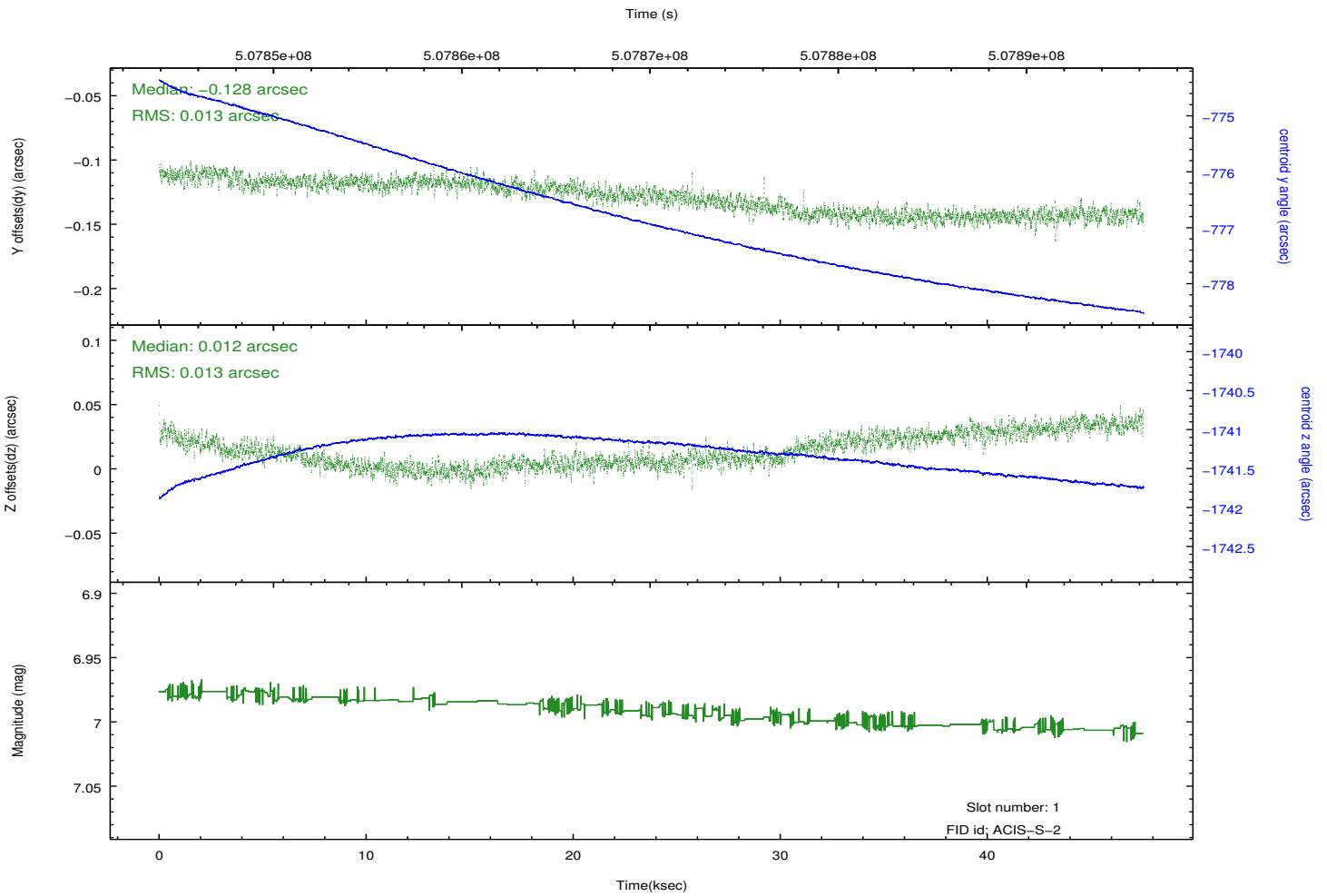
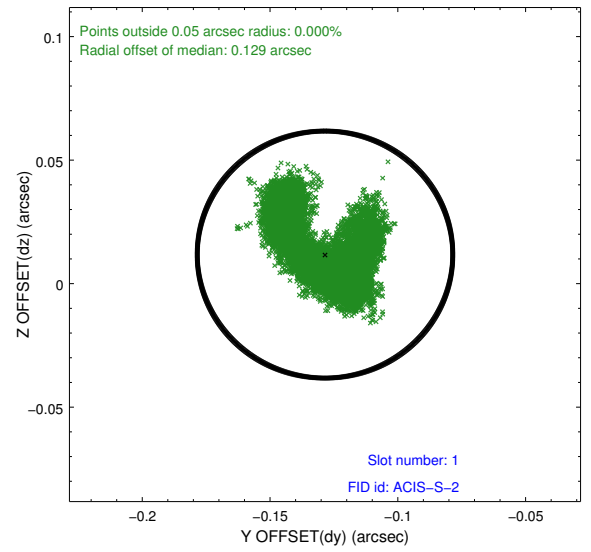
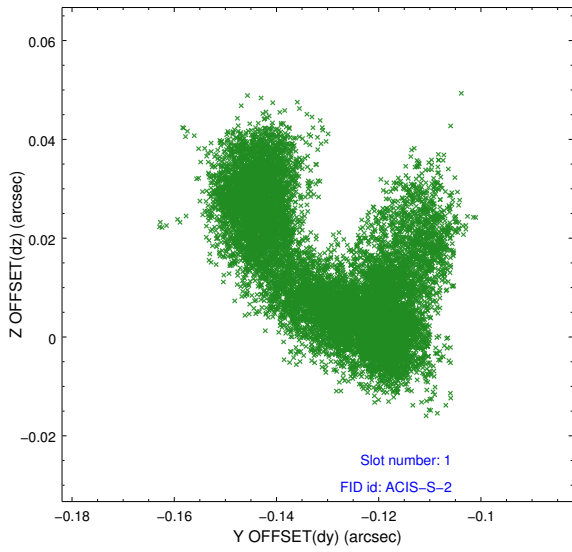


2.5 FID Slots

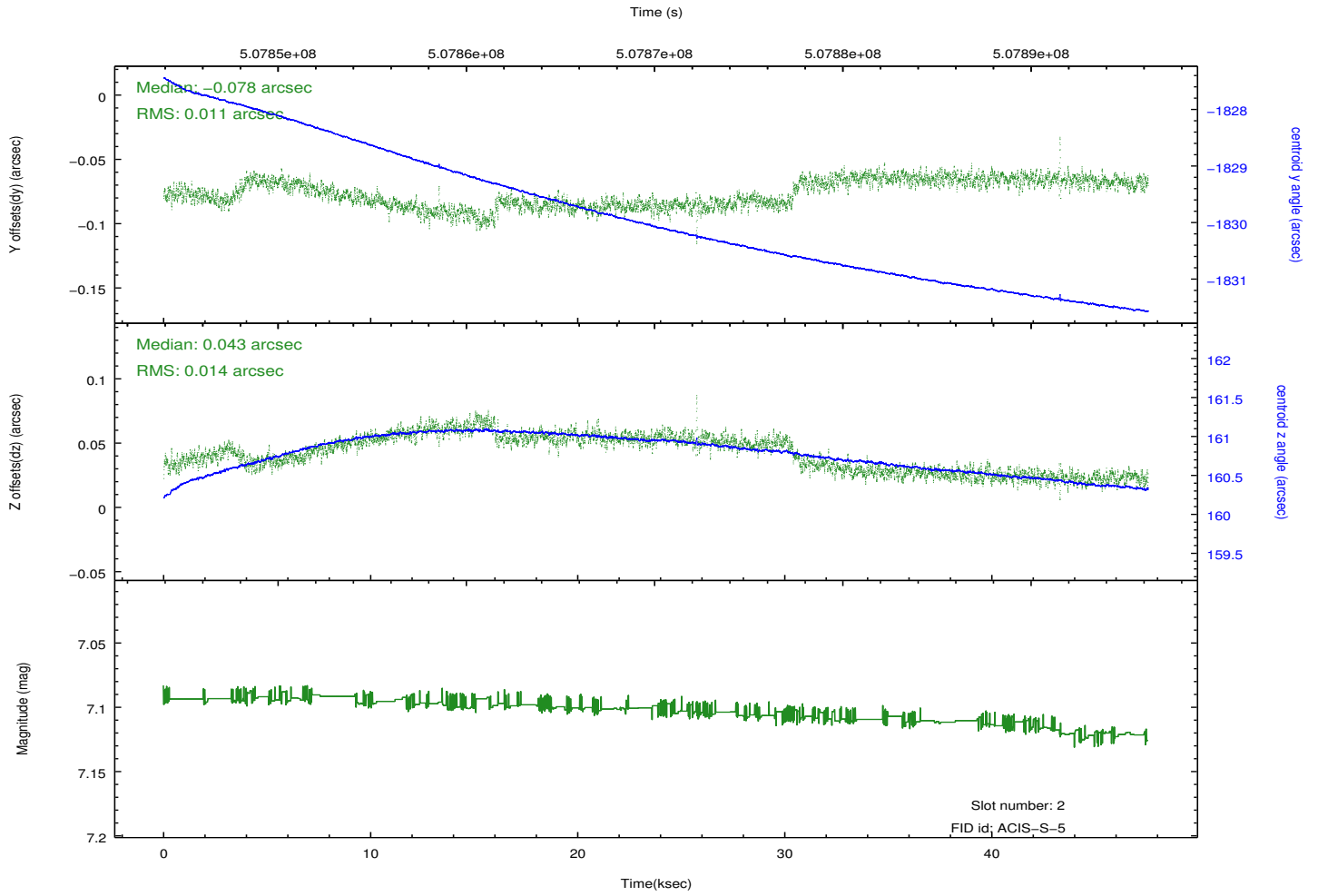
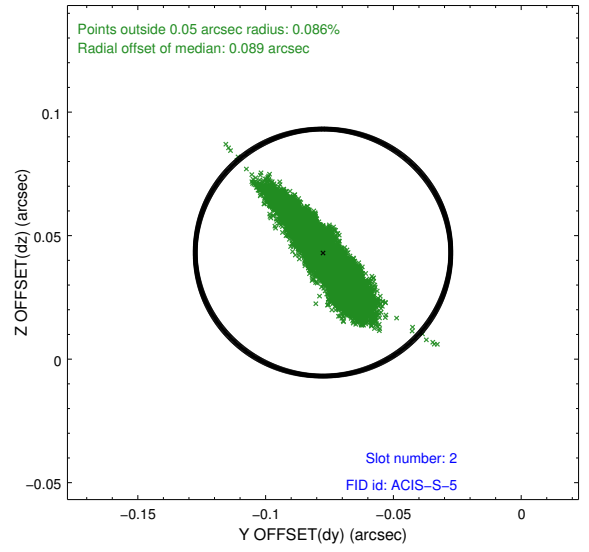
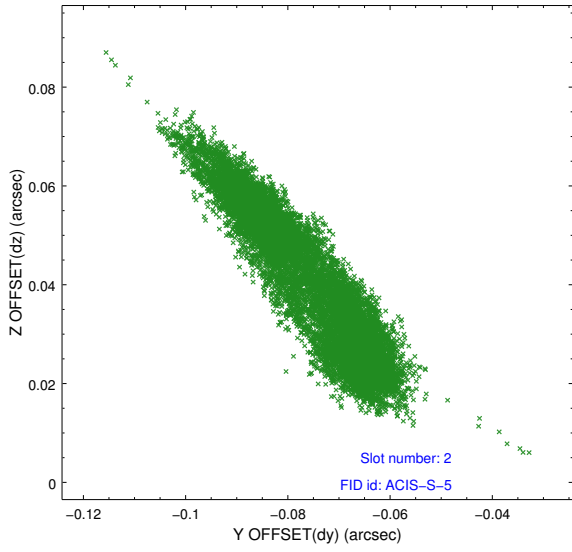
2.5.1 Slot 0



2.5.2 Slot 1



2.5.3 Slot 2



A Summary

A.1 Status

V&V Scientist	Beth Sundheim
V&V Date (YYYY-MM-DD)	2014.12.15
V&V Edition	1
V&V Disposition and Status	OK
V&V Charge Time	47.465954349458

A.2 Comments

These data have been reprocessed with new aspect alignment calibration files that correct small mean offsets (up to 0.4 arcsecs) and improve overall astrometric accuracy. The new calibration was determined using data from the time period being reprocessed and was performed using cross-correlation of X-ray sources with radio and optical counterparts.