

V&V Reference Report

L2 ASCDS Version : 10.3.3

Observation 17580 - L2 Version 1
Chandra X-Ray Center

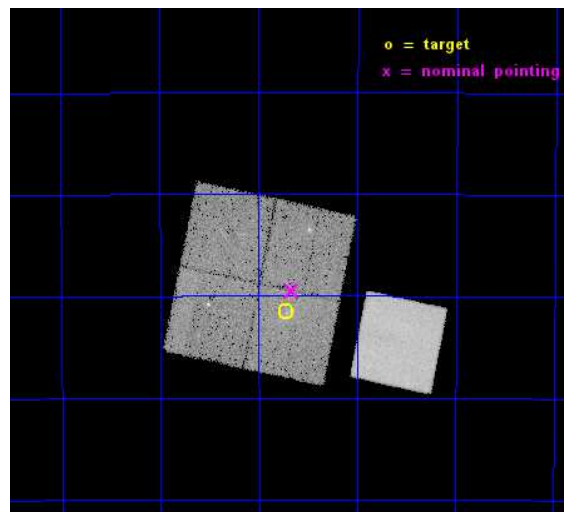
L2 Processing Date : Jan 24 2015

Contents

1	Front	2
2	OBI	3
2.1	OBI	3
2.1.1	Images	3
2.1.2	Bias	3
2.1.3	Parameters	4
2.1.4	Events	4
2.2	Compared Parameters	5
2.3	Aspect	6
2.4	Star Slots	9
2.4.1	Slot 3	9
2.4.2	Slot 4	10
2.4.3	Slot 5	11
2.4.4	Slot 6	12
2.4.5	Slot 7	13
2.5	FID Slots	14
2.5.1	Slot 0	14
2.5.2	Slot 1	15
2.5.3	Slot 2	16
A	Summary	17
A.1	Status	17
A.2	Comments	17

1 Front

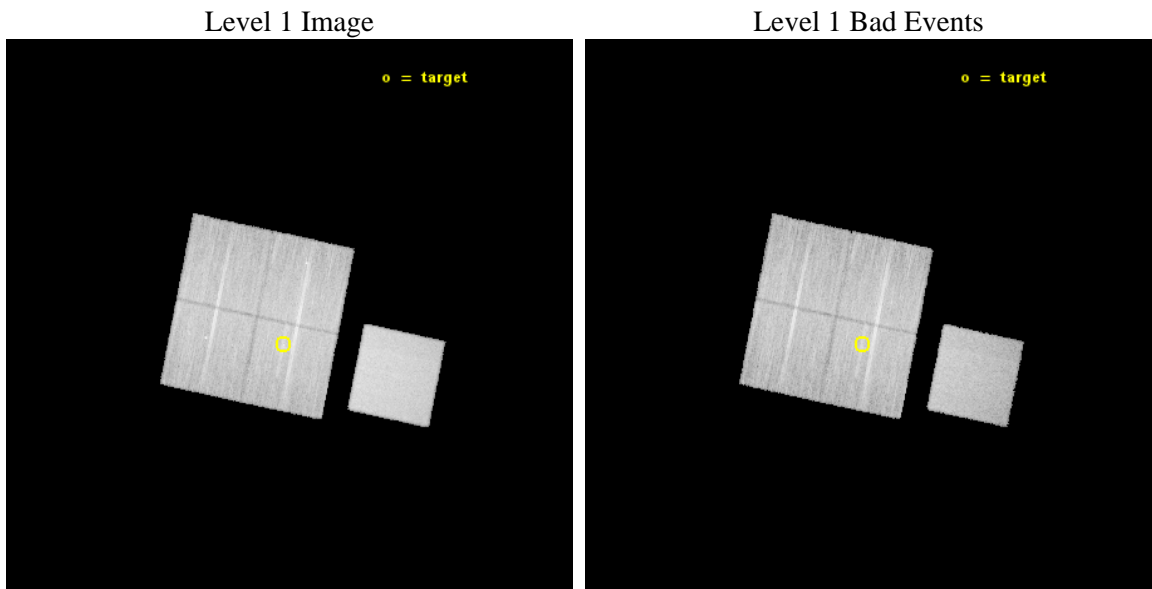
seq_num	502289	Sequence number
obs_id	17580	Observation id
title	HESS~J1640-465: Powering the most luminous gamma-ray source in the Galaxy	Proposal title
observer	Dr Eric Gotthelf	Principal investigator
object	CXOU J164043.5-463135	Source name
dtcycle	0	
cycle	P	events from which exps? Prim/Second/Both
ra_targ	250.18125	Observer's specified target RA [deg]
dec_targ	-46.526389	Observer's specified target Dec [deg]
ra_nom	250.16725178144	Nominal RA [deg]
dec_nom	-46.491482869294	Nominal Dec [deg]
roll_nom	101.69852022169	Nominal Roll [deg]
revision	1	Processing version of data
ontime	30727.159246206	Sum of GTIs [s]
livetime	30325.686289649	Livetime [s]
ontime0	30727.159365773	Sum of GTIs [s]
ontime1	30730.300236464	Sum of GTIs [s]
ontime2	30730.300236464	Sum of GTIs [s]
ontime3	30727.159246206	Sum of GTIs [s]
ontime7	30730.300236464	Sum of GTIs [s]
l2events	162733	Number of level 2 events



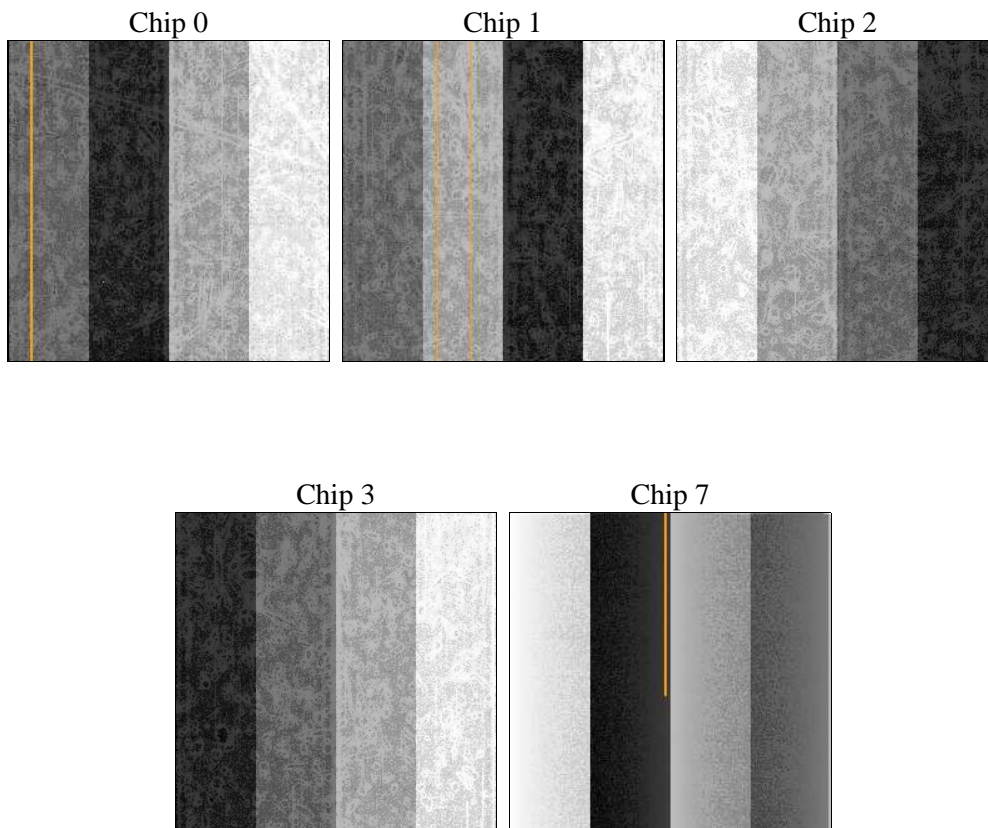
2 OBI

2.1 OBI

2.1.1 Images



2.1.2 Bias



2.1.3 Parameters

obi_num	0	Obi number	sched_exp_time	30670.663000	[s] Scheduled observation exposure time
ascdsver	10.3.3	Processing system revision	ontime	30727.159246206	Sum of GTIs [s]
caldbver	4.6.6	 	ontime0	30727.159365773	Sum of GTIs [s]
date	2015-01-25T02:19:41	Date and time of file creation	ontime1	30730.300236464	Sum of GTIs [s]
revision	1	Processing version of data	ontime2	30730.300236464	Sum of GTIs [s]
			ontime3	30727.159246206	Sum of GTIs [s]
			ontime7	30730.300236464	Sum of GTIs [s]
			l1events	816893	Number of level 1 events

2.1.4 Events

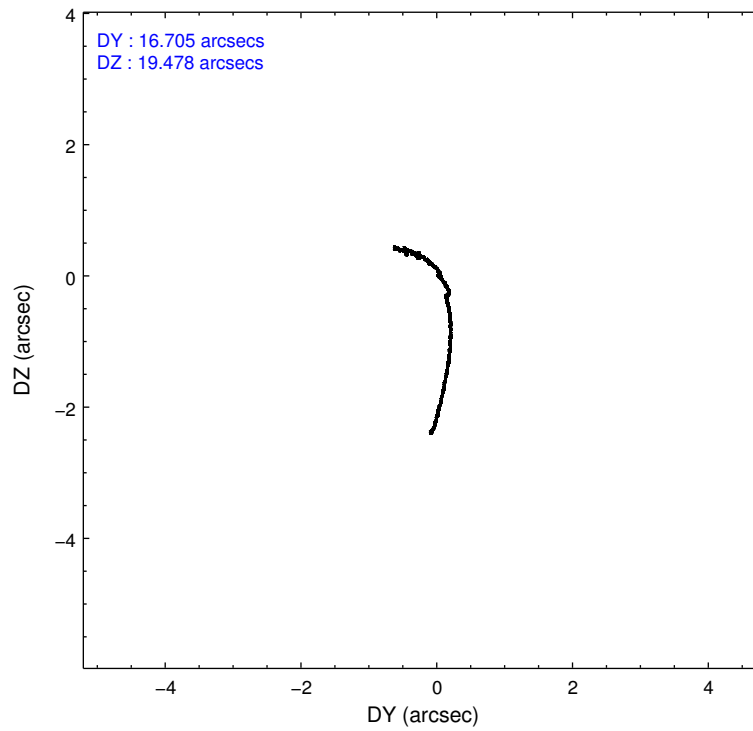
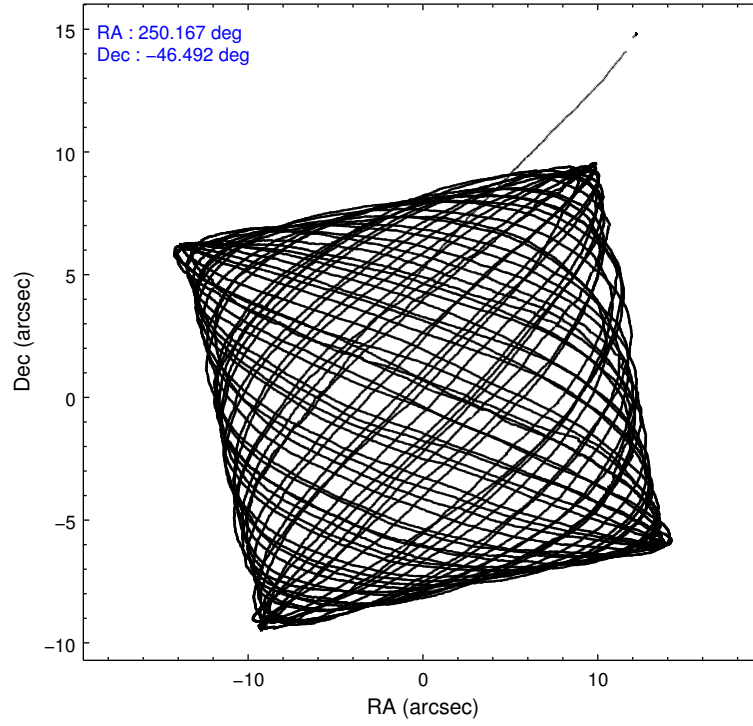
	ccd 0	ccd 1	ccd 2	ccd 3	ccd 7
level 1 events	144383	147305	158534	156375	210296
rejected events	123871	125127	137304	135154	117972
rejected %	85%	84%	86%	86%	56%

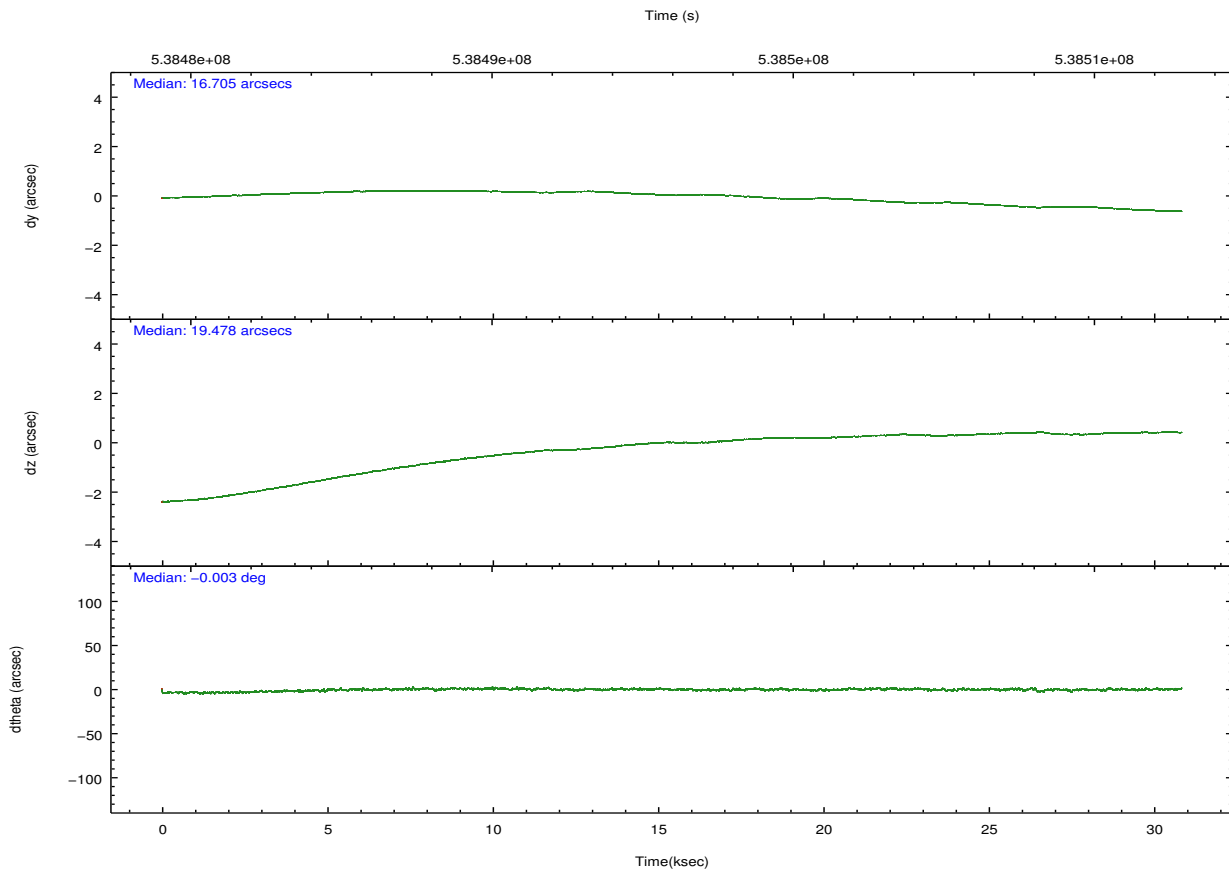
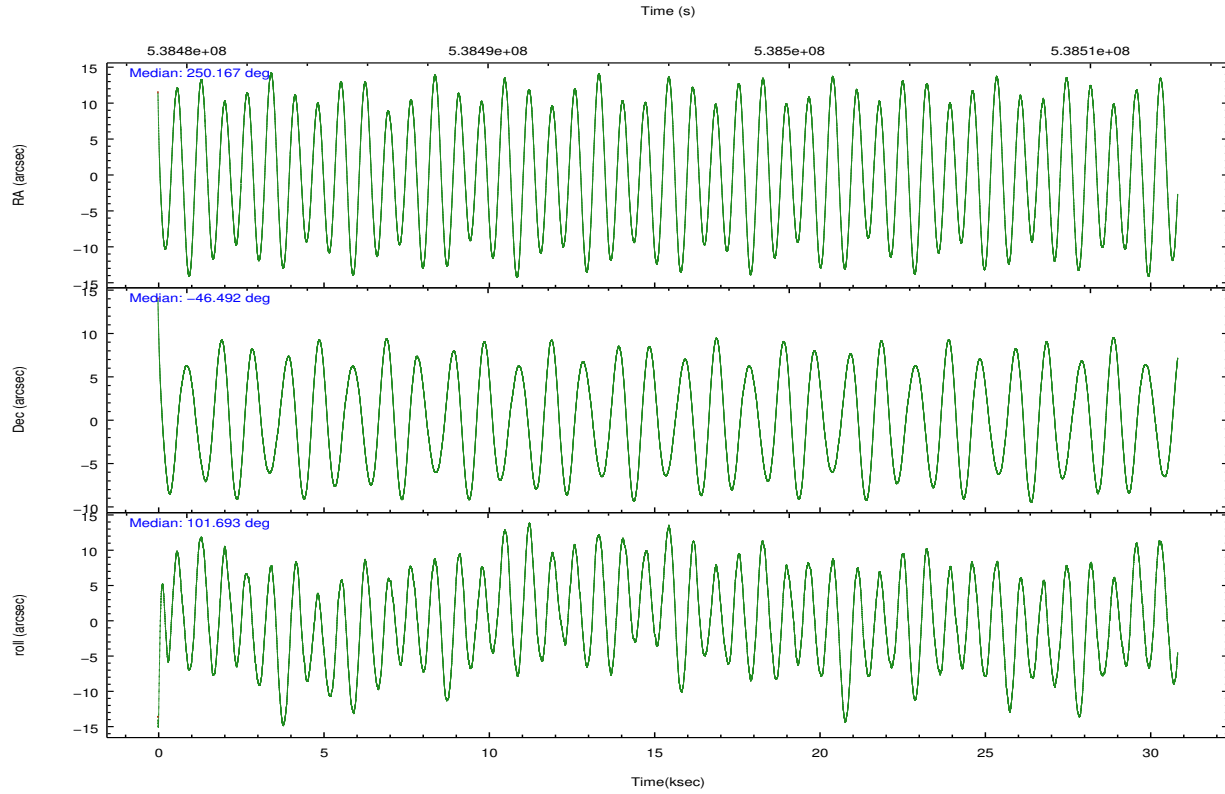
	ccd 0	ccd 1	ccd 2	ccd 3	ccd 7
grade 0 events	8116	8576	8936	9184	8511
	5%	5%	5%	5%	4%
grade 1 events	86	92	88	112	283
	0%	0%	0%	0%	0%
grade 2 events	4851	5174	4747	4358	19418
	3%	3%	2%	2%	9%
grade 3 events	2025	1994	1960	1921	7729
	1%	1%	1%	1%	3%
grade 4 events	1830	1948	1934	2000	7830
	1%	1%	1%	1%	3%
grade 5 events	6879	7513	6563	7867	21075
	4%	5%	4%	5%	10%
grade 6 events	3691	4488	3657	3762	48847
	2%	3%	2%	2%	23%
grade 7 events	116905	117520	130649	127171	96603
	80%	79%	82%	81%	45%

2.2 Compared Parameters

Parameter	Planned	Actual	Parameter	Planned	Actual
Instrument	ACIS	ACIS	Obspar format version number	7	7
Detector	ACIS-01237	ACIS-01237	Obspar file type	PREDICTED	ACTUAL
Grating	NONE	NONE	Obspar update status	NONE	UPDATED
Data mode	VFAINT	VFAINT	CCD I0 on	Y	Y
Observation mode	POINTING	POINTING	CCD I1 on	Y	Y
[deg] Pointing RA	250.194051	250.167251781438	CCD I2 on	Y	Y
[deg] Pointing Dec	-46.512007	-46.49148286929417	CCD I3 on	Y	Y
[deg] Pointing Roll	101.509286	101.6985202216893	CCD S0 on	N	N
[mm] SIM focus pos	-0.782348	-0.7809083437167272	CCD S1 on	N	N
[mm] SIM defocus	0	0.001439871863259334	CCD S2 on	N	N
[mm] SIM translation stage pos	-225.694963	-225.7075703057396	CCD S3 on	O1	Y
[mm] SIM translation stage offset	-7.8975	-7.884882697190051	CCD S4 on	N	N
[s] Observation start time (MET)	538480720.184000	538479491.35232	CCD S5 on	N	N
Observation start date	2015-01-24T09:57:33	2015-01-24T09:38:11	Number of optional ACIS chips dropped	0	0
[s] Observation end time (MET)	538511390.184000	538511625.6166199	On-chip summing requested	N	N
Observation end date	2015-01-24T18:28:43	2015-01-24T18:33:45	Subarray requested	NONE	NONE
Read mode	TIMED	TIMED	Alternating exposures requested	N	N
			[s] Primary exposure time	0.000000	3.1

2.3 Aspect





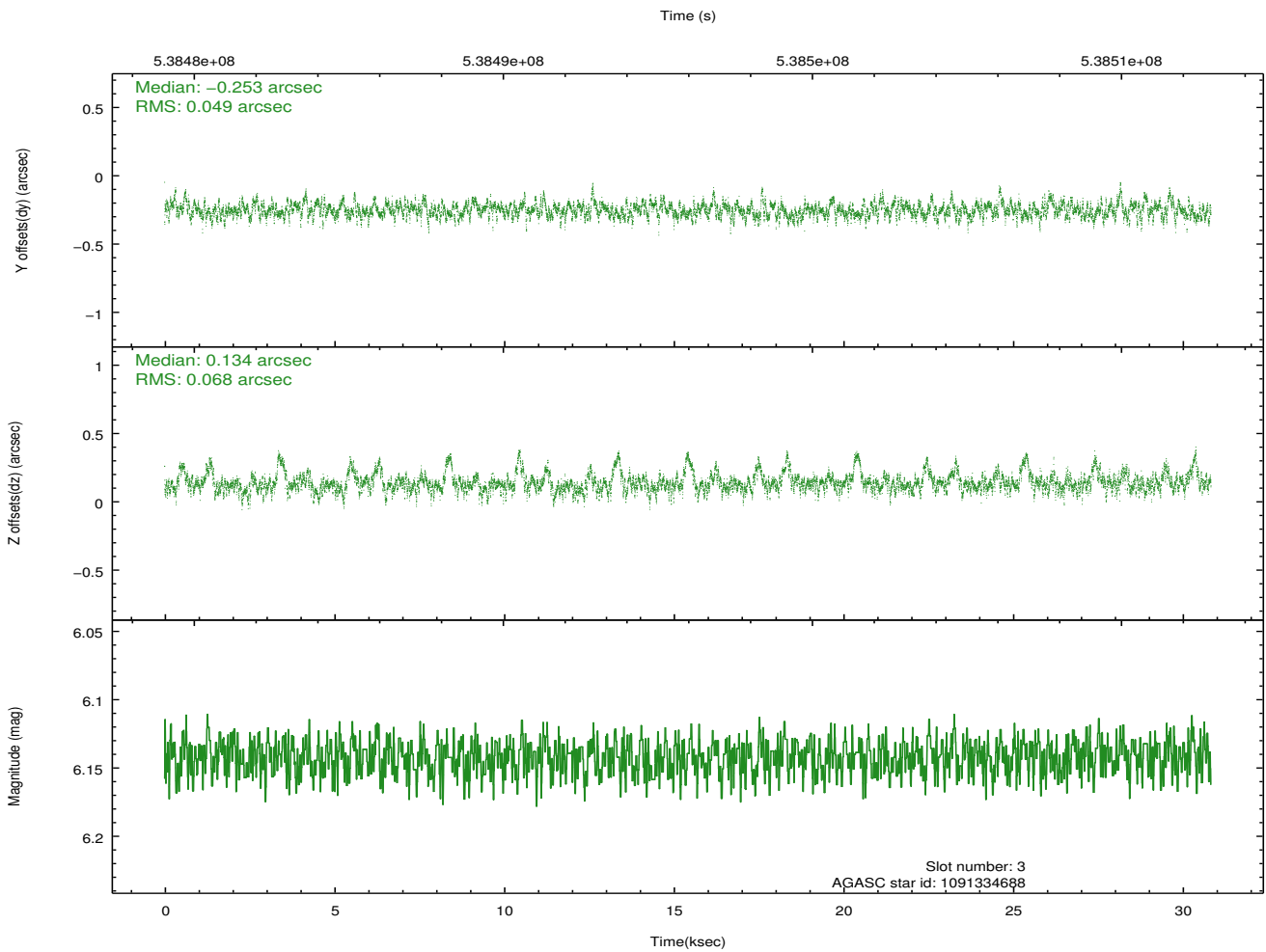
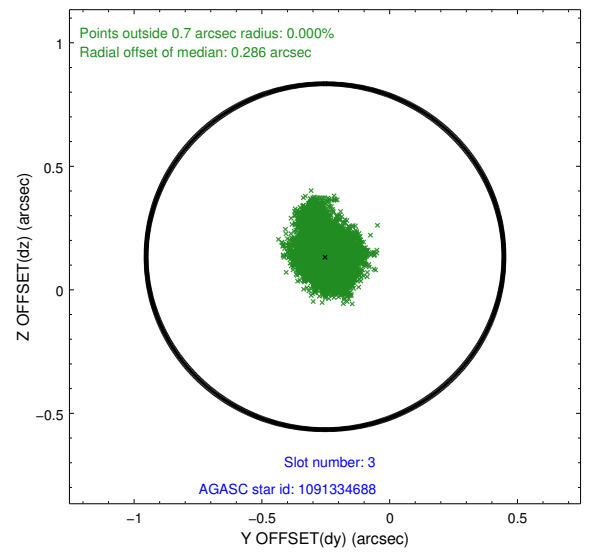
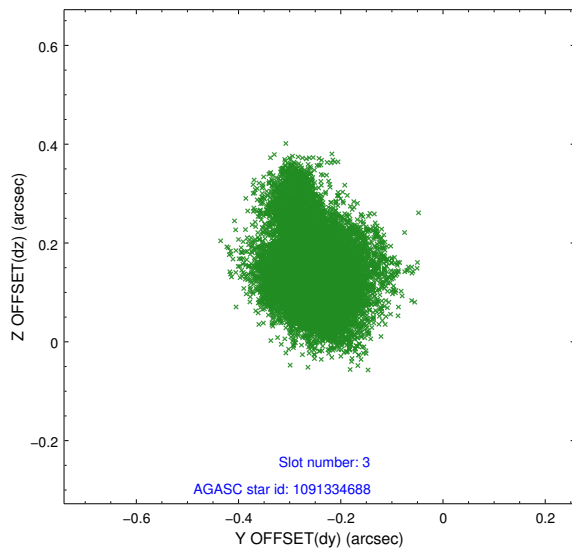
Slot Statistics

slot	status	used	id	mag	n_pts	med_dy	med_dz	dr1	dr2	ra	dec	mean_y	mean_z
0	FID		ACIS-I-2	7.14	7521	-0.183	-0.027	0.020	0.033	0.000000	0.000000	-772.12	-1010.02
1	FID		ACIS-I-4	7.08	7521	0.274	0.106	0.011	0.019	0.000000	0.000000	2142.31	896.22
2	FID		ACIS-I-5	7.18	7522	-0.194	-0.012	0.018	0.029	0.000000	0.000000	-1825.48	892.97
3	GUIDE	used	1091334688	6.14	15044	-0.253	0.134	0.084	0.161	250.764858	-46.070295	1268.79	-1712.82
4	GUIDE	used	1091706496	8.39	15044	0.029	-0.408	0.097	0.156	249.546894	-47.245288	-2277.54	2077.35
5	GUIDE	used	1091838488	9.42	15029	0.243	0.619	0.148	0.246	251.127983	-46.881927	-1776.41	-1982.66
6	GUIDE	used	1091193912	8.90	15038	-0.235	0.008	0.105	0.167	250.208472	-45.834358	2383.12	-521.94
7	GUIDE	used	1091704704	10.09	15030	0.227	-0.356	0.196	0.331	249.457504	-47.039620	-1508.67	2151.04

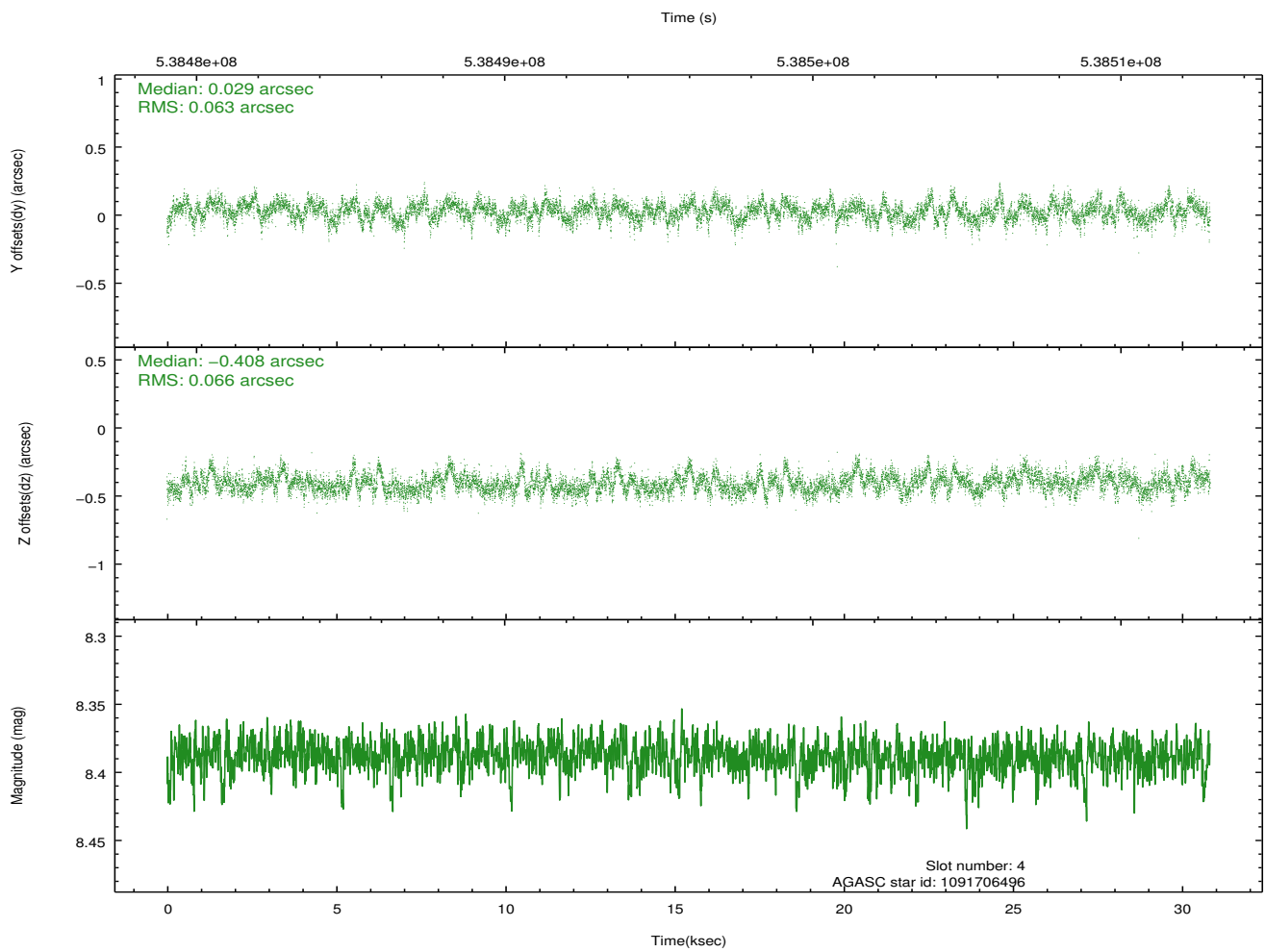
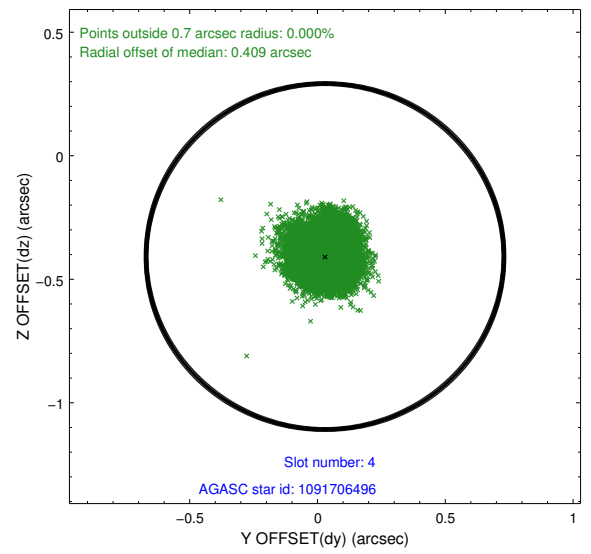
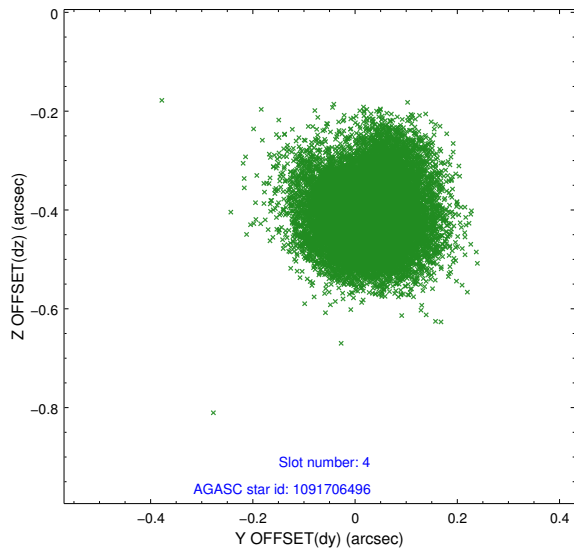
∞

2.4 Star Slots

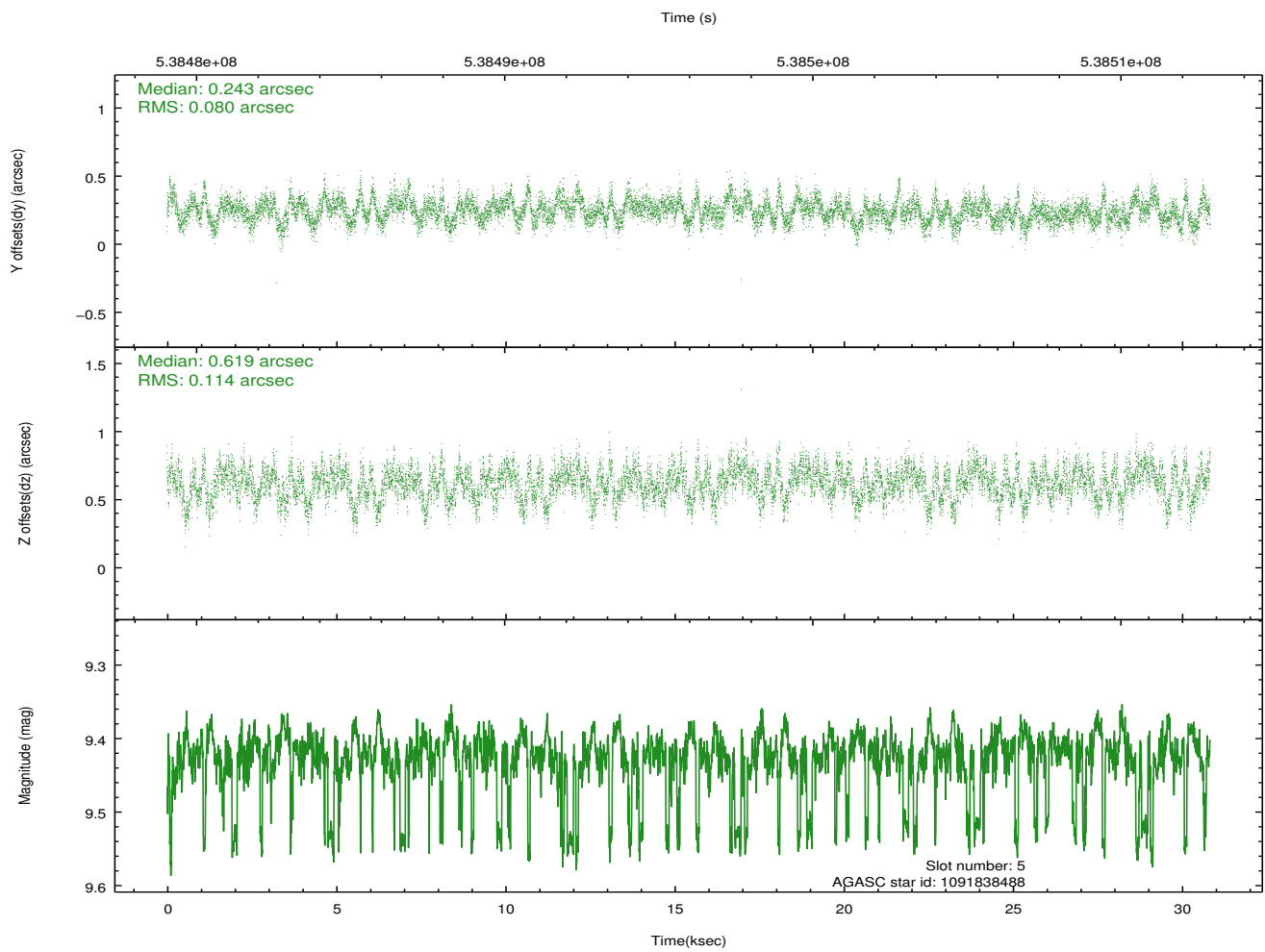
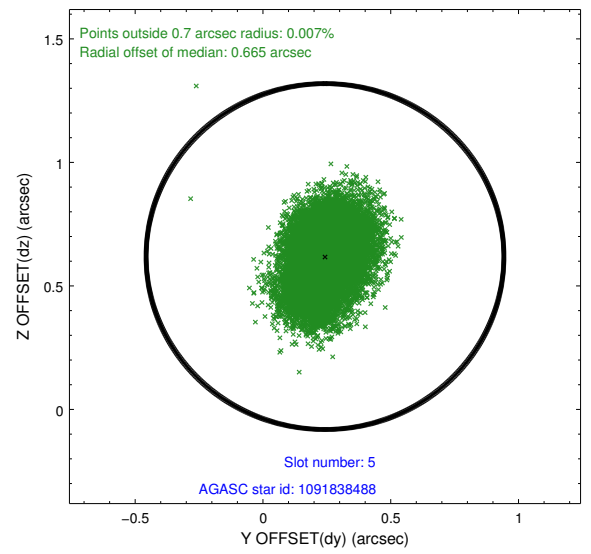
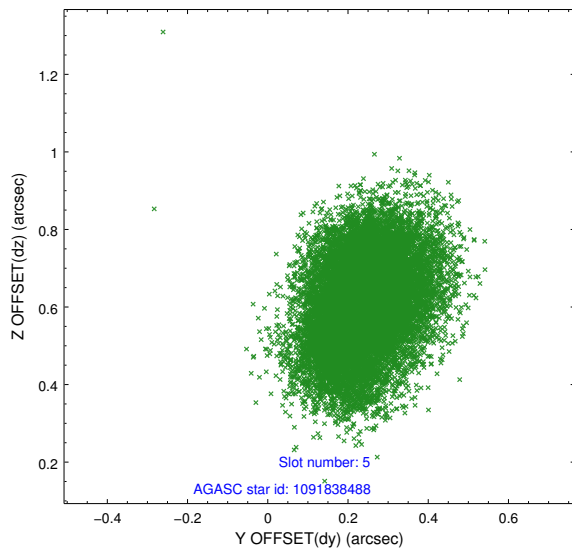
2.4.1 Slot 3



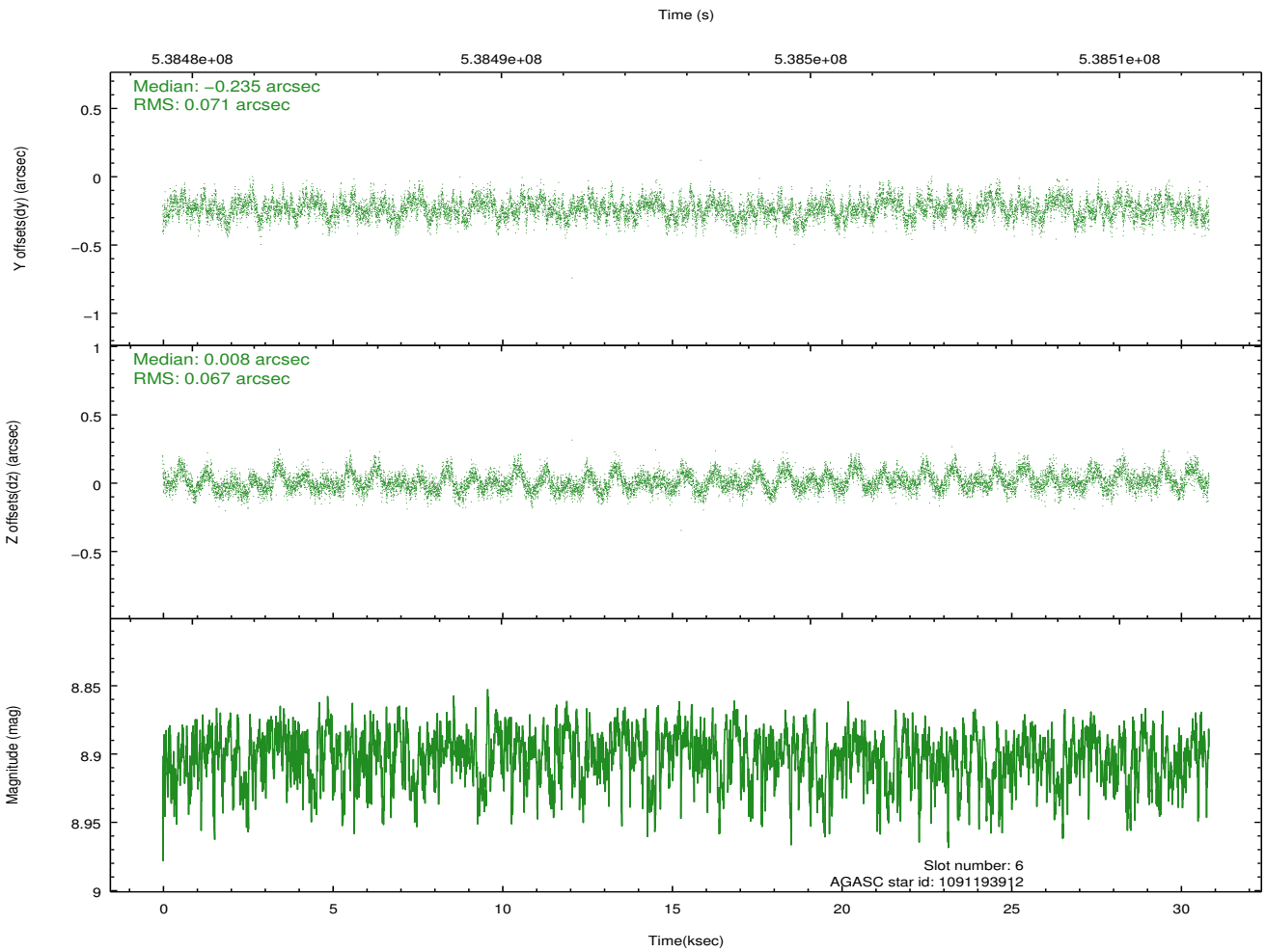
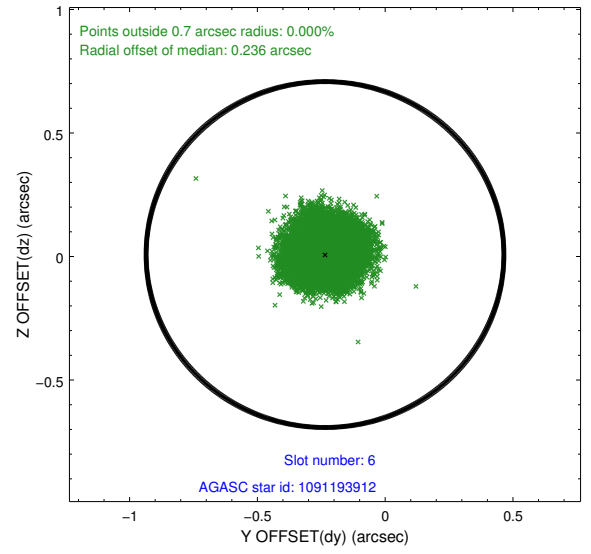
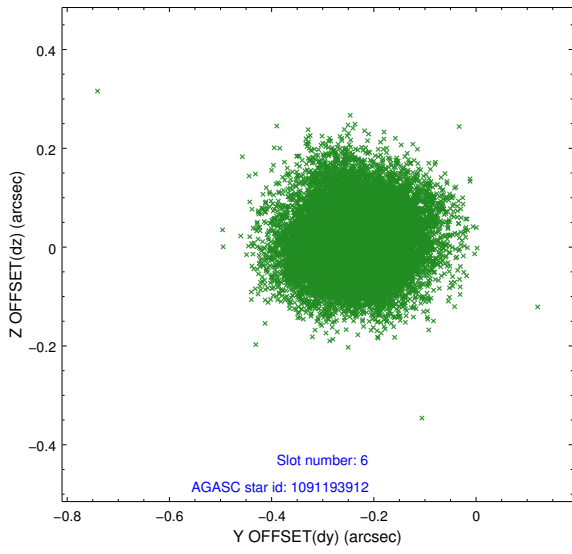
2.4.2 Slot 4



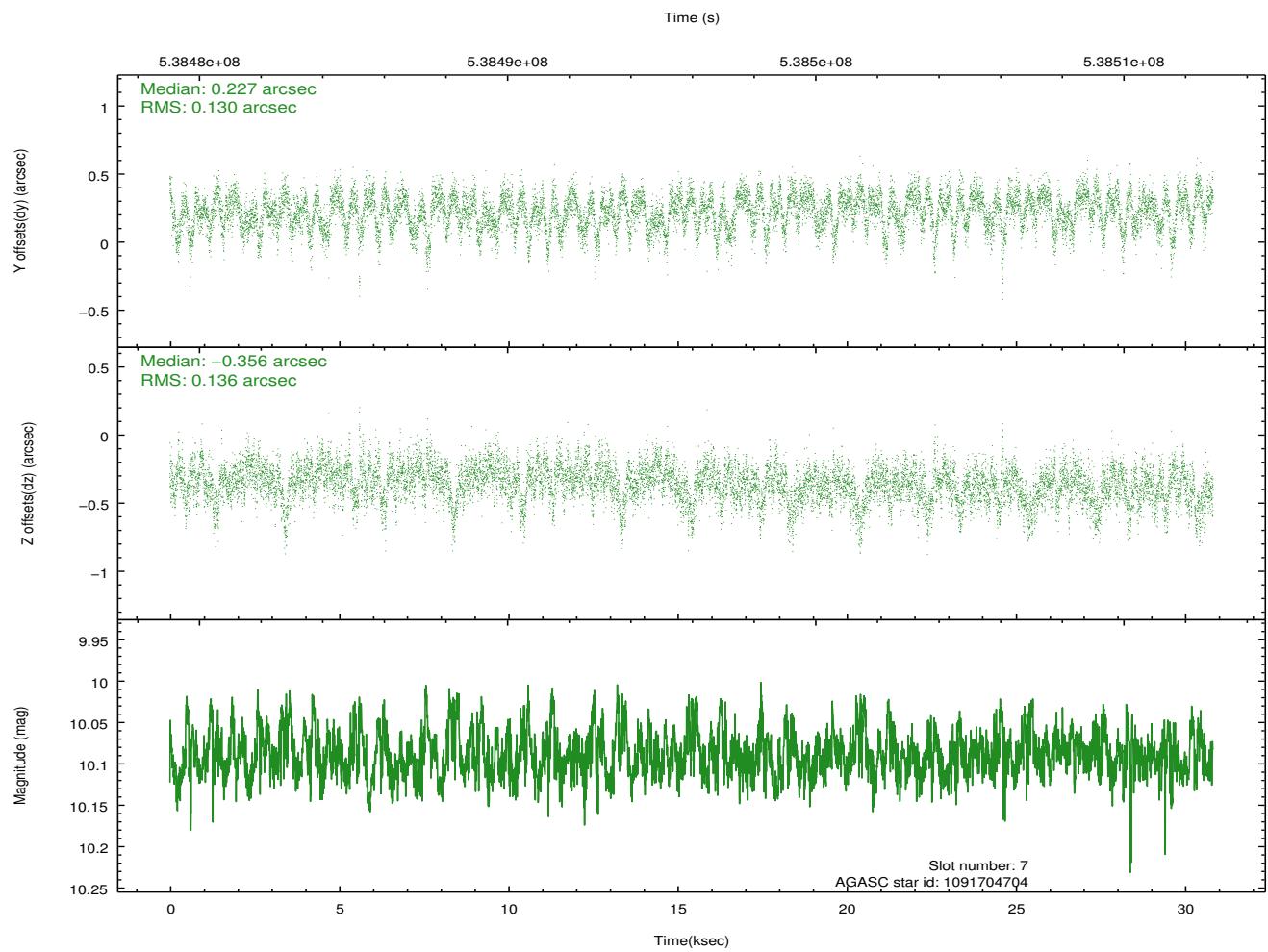
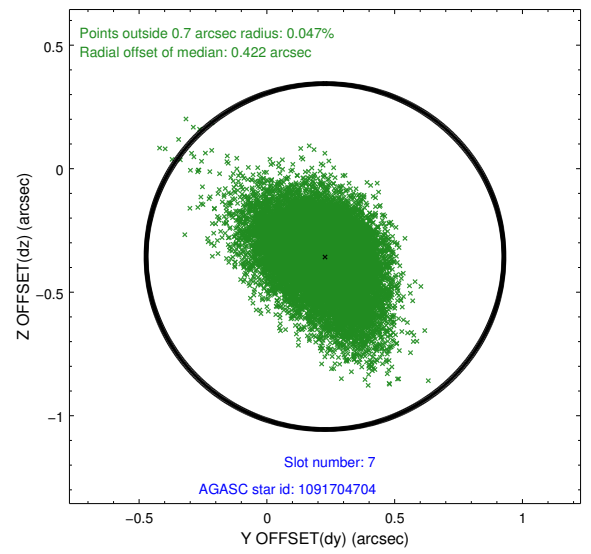
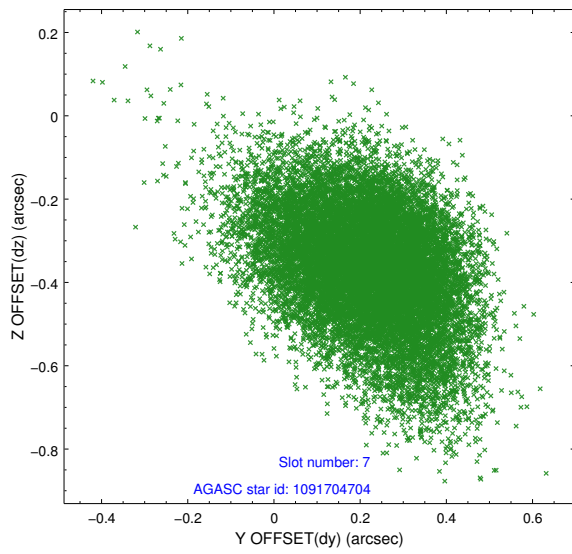
2.4.3 Slot 5



2.4.4 Slot 6

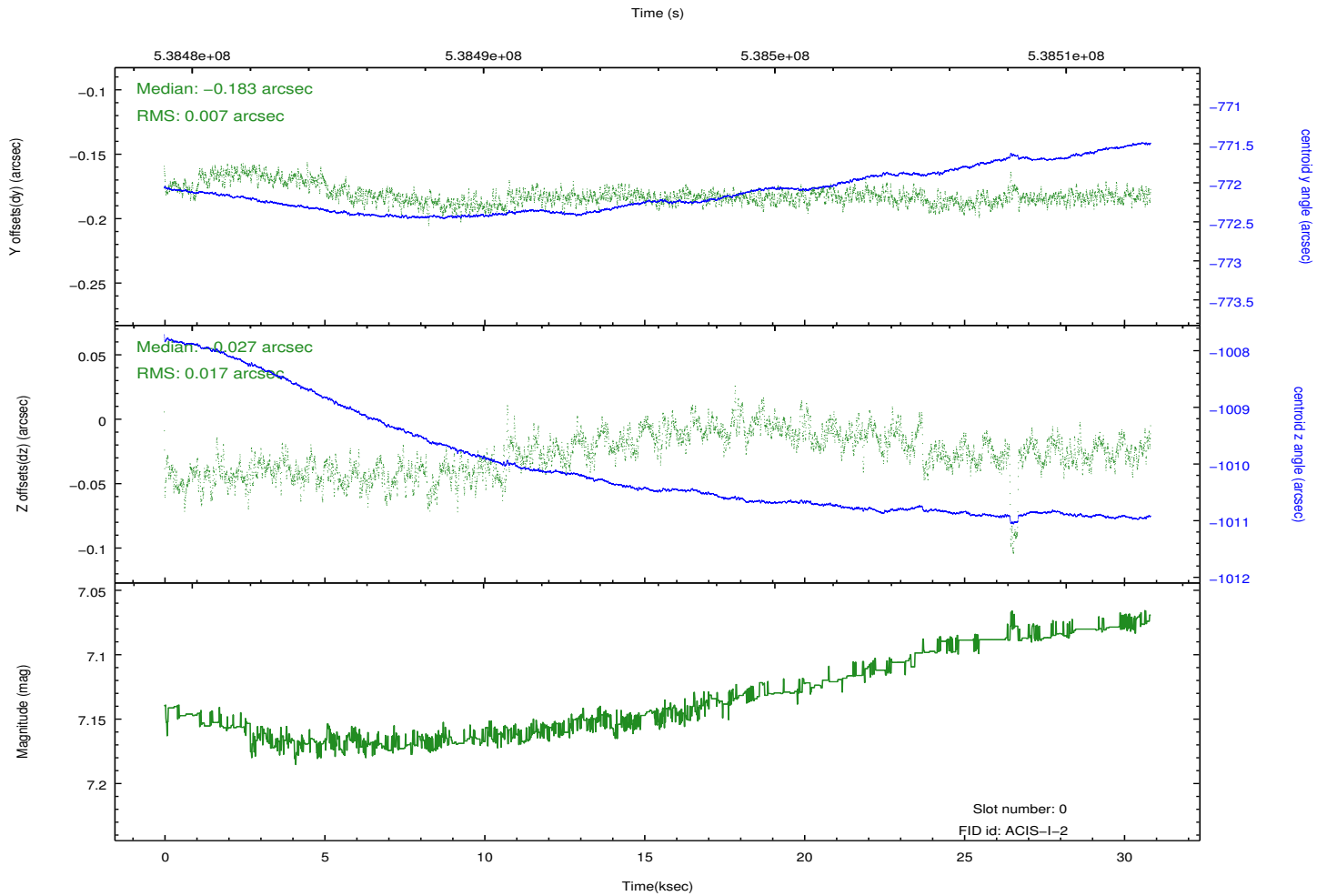
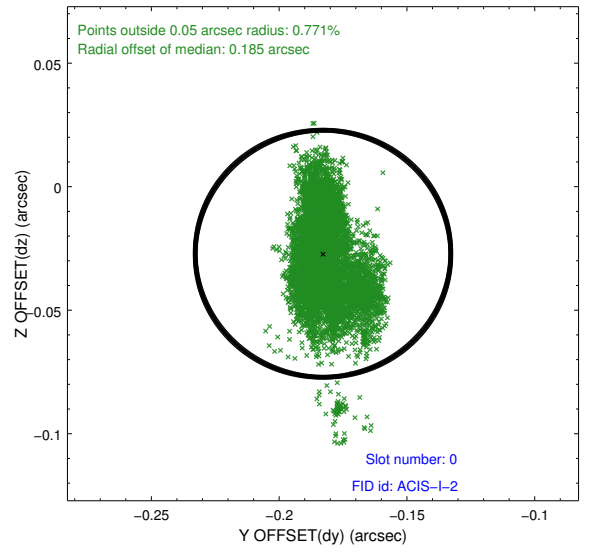
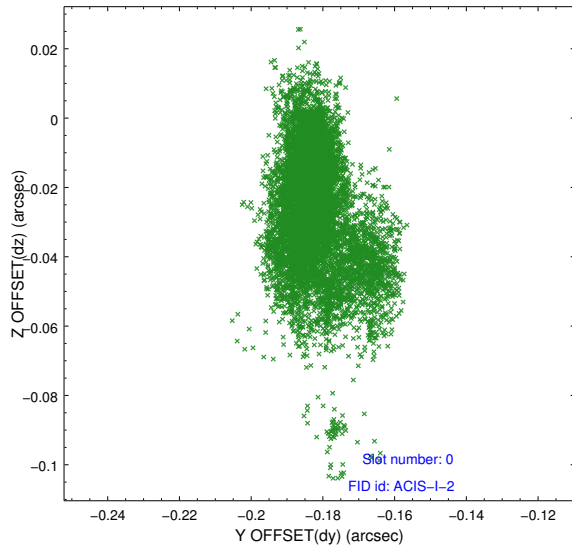


2.4.5 Slot 7

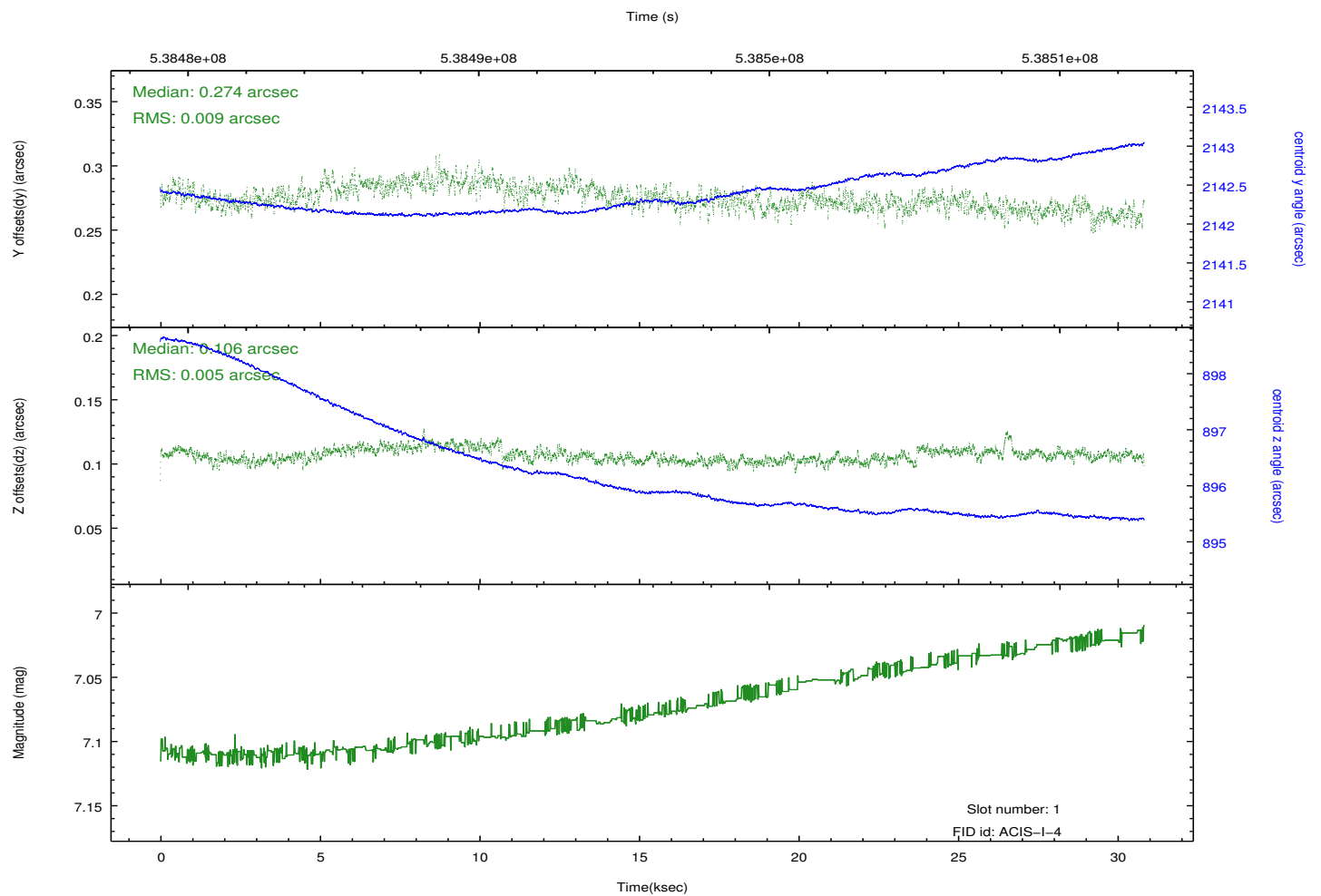
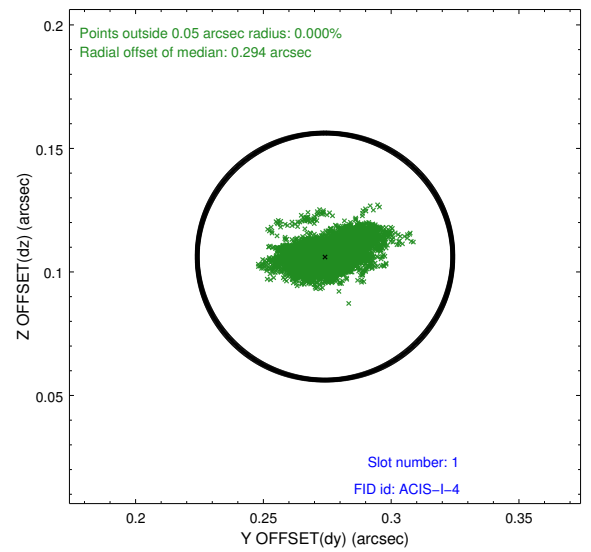
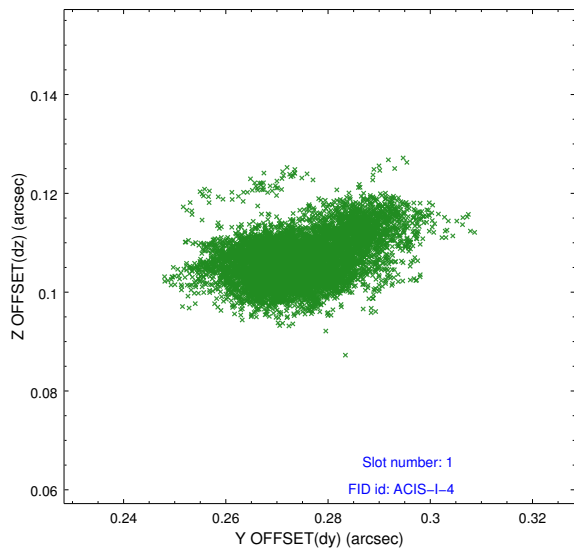


2.5 FID Slots

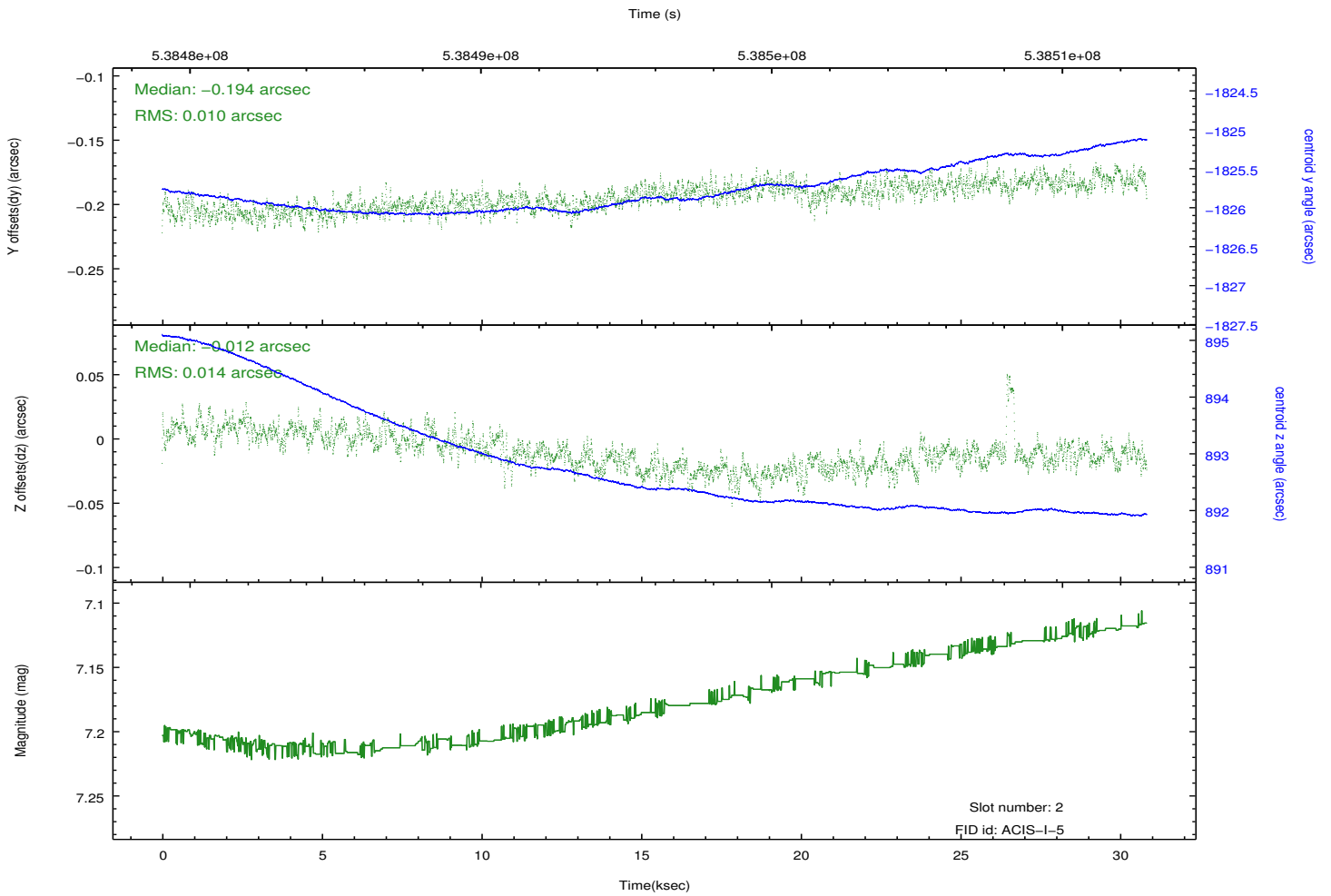
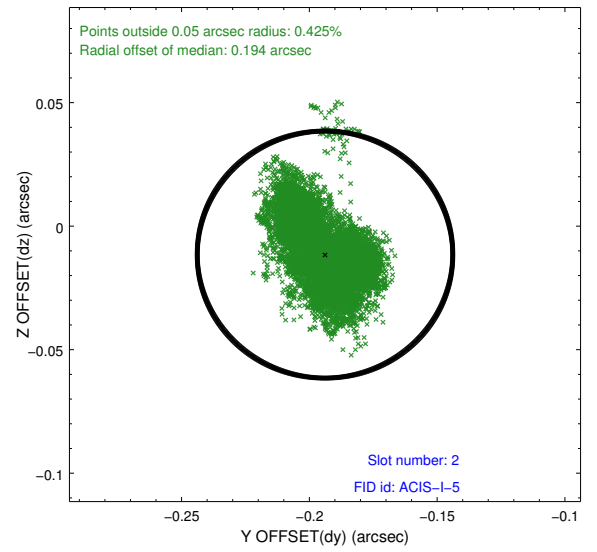
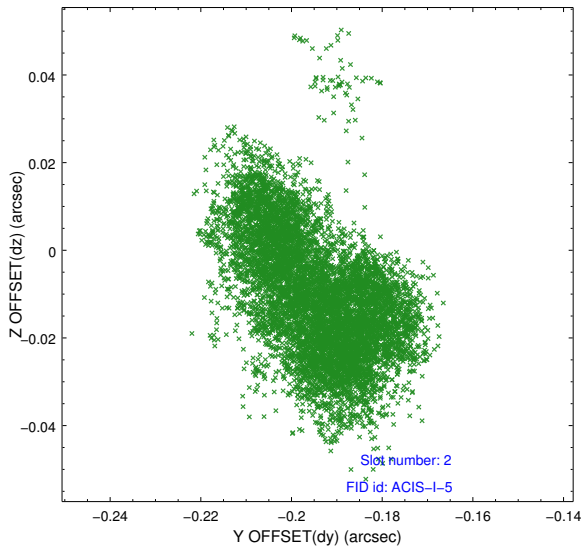
2.5.1 Slot 0



2.5.2 Slot 1



2.5.3 Slot 2



A Summary

A.1 Status

V&V Scientist	Jen Lauer
V&V Date (YYYY-MM-DD)	2015.01.26
V&V Edition	1
V&V Disposition and Status	OK
V&V Charge Time	30.727159246206

A.2 Comments