

V&V Reference Report

L2 ASCDS Version : 8.4.5

Observation 1850 - L2 Version 7
Chandra X-Ray Center

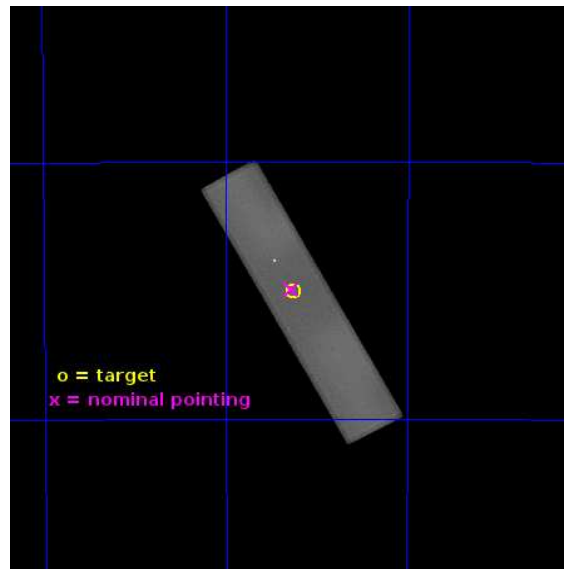
L2 Processing Date : Jun 28 2013

Contents

1	Front	2
2	OBI	3
2.1	OBI	3
2.1.1	Images	3
2.1.2	Parameters	4
2.1.3	Events	4
2.2	Compared Parameters	5
2.3	Aspect	6
2.4	Star Slots	9
2.4.1	Slot 3	9
2.4.2	Slot 4	10
2.4.3	Slot 5	11
2.4.4	Slot 6	12
2.4.5	Slot 7	13
2.5	FID Slots	14
2.5.1	Slot 0	14
2.5.2	Slot 1	15
2.5.3	Slot 2	16
A	Summary	17
A.1	Status	17
A.2	Comments	17

1 Front

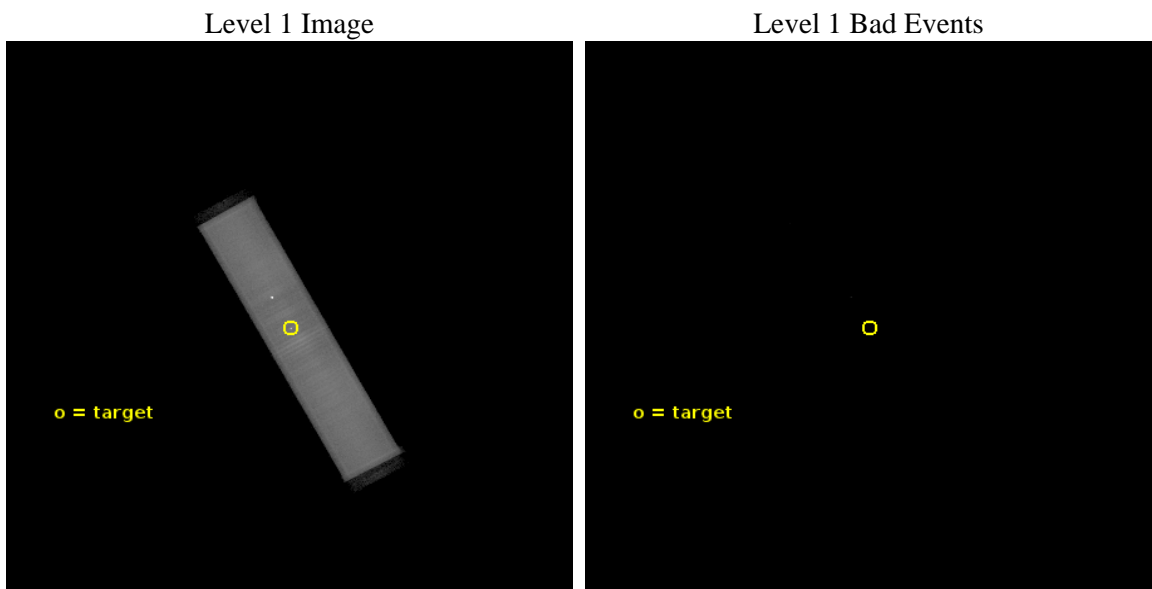
seq_num	500121	Sequence number
obs_id	1850	Observation id
title	THE MILLISECOND PULSAR PSR J0437-4715: MAGNETOSPHERE OR ATMOSPHERE?	
observer	Dr. George Pavlov	Principal investigator
object	PSR J0437-4715	Source name
ra_targ	69.315833	Observer's specified target RA [deg]
dec_targ	-47.252278	Observer's specified target Dec [deg]
ra_nom	69.319564892764	Nominal RA [deg]
dec_nom	-47.248096823964	Nominal Dec [deg]
roll_nom	60.837078872286	Nominal Roll [deg]
revision	7	Processing version of data
ontime	19715.106994376	[s]
livetime	19635.227053778	Ontime multiplied by DTCOR
l2events	863446	Number of level 2 events



2 OBI

2.1 OBI

2.1.1 Images



2.1.2 Parameters

obi_num	0	Obi number	sched_exp_time	19577.081000	[s] Scheduled observation exposure time
ascdsver	10	Processing system revision	ontime	19715.106994376	[s]
caldbver	4.5.7	 	l1events	1210354	Number of level 1 events
date	2013-06-28T23:20:40	Date and time of file creation			
revision	6	Processing version of data			

2.1.3 Events

Level 1 Events

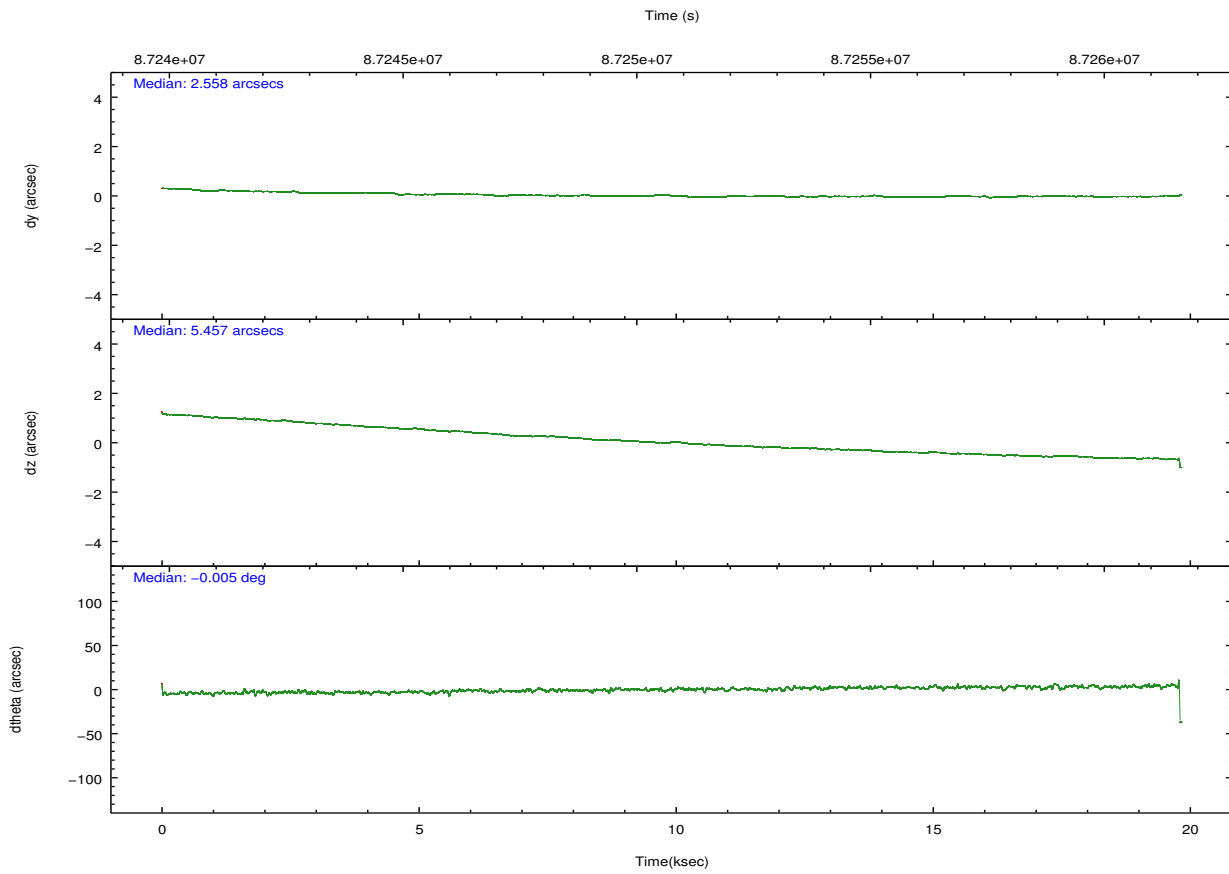
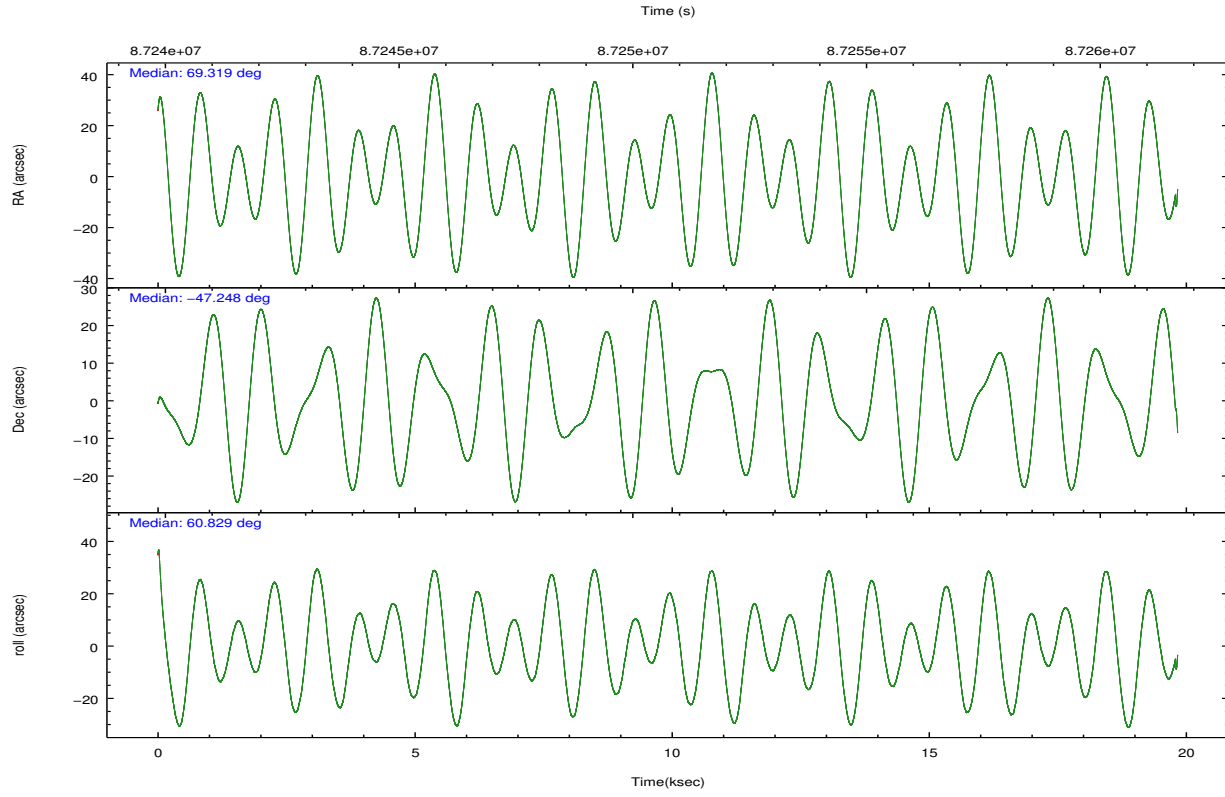
	segment 1	segment 2	segment 3
level 1 events	4031	1203868	2455
rejected events	2794	39179	2453
rejected %	69%	3%	99%

2.2 Compared Parameters

Parameter	Planned	Actual
Instrument	HRC	HRC
Detector	HRC-S	HRC-S
Grating	NONE	NONE
Data mode	OBSERVING	OBSERVING
Observation mode	POINTING	POINTING
[deg] Pointing RA	69.322062	69.31956489276408
[deg] Pointing Dec	-47.276798	-47.24809682396432
[deg] Pointing Roll	60.771566	60.83707887228628
[mm] SIM focus pos	-1.429586	-1.428180813131781
[mm] SIM defocus	0.1037507710433287	0.1051558262725154
[mm] SIM translation stage pos	250.455976	250.466033080201
[mm] SIM translation stage offset	0	-0.01005468664627074
[s] Observation start time (MET)	87240966.184000	87239906.517728
Observation start date	2000-10-06T17:35:02	2000-10-06T17:18:26
[s] Observation end time (MET)	87260543.184000	87261448.431041
Observation end date	2000-10-06T23:01:19	2000-10-06T23:17:28

Parameter	Planned	Actual
Obspar format version number	7	7
Obspar file type	PREDICTED	ACTUAL
Obspar update status	NONE	UPDATED

2.3 Aspect

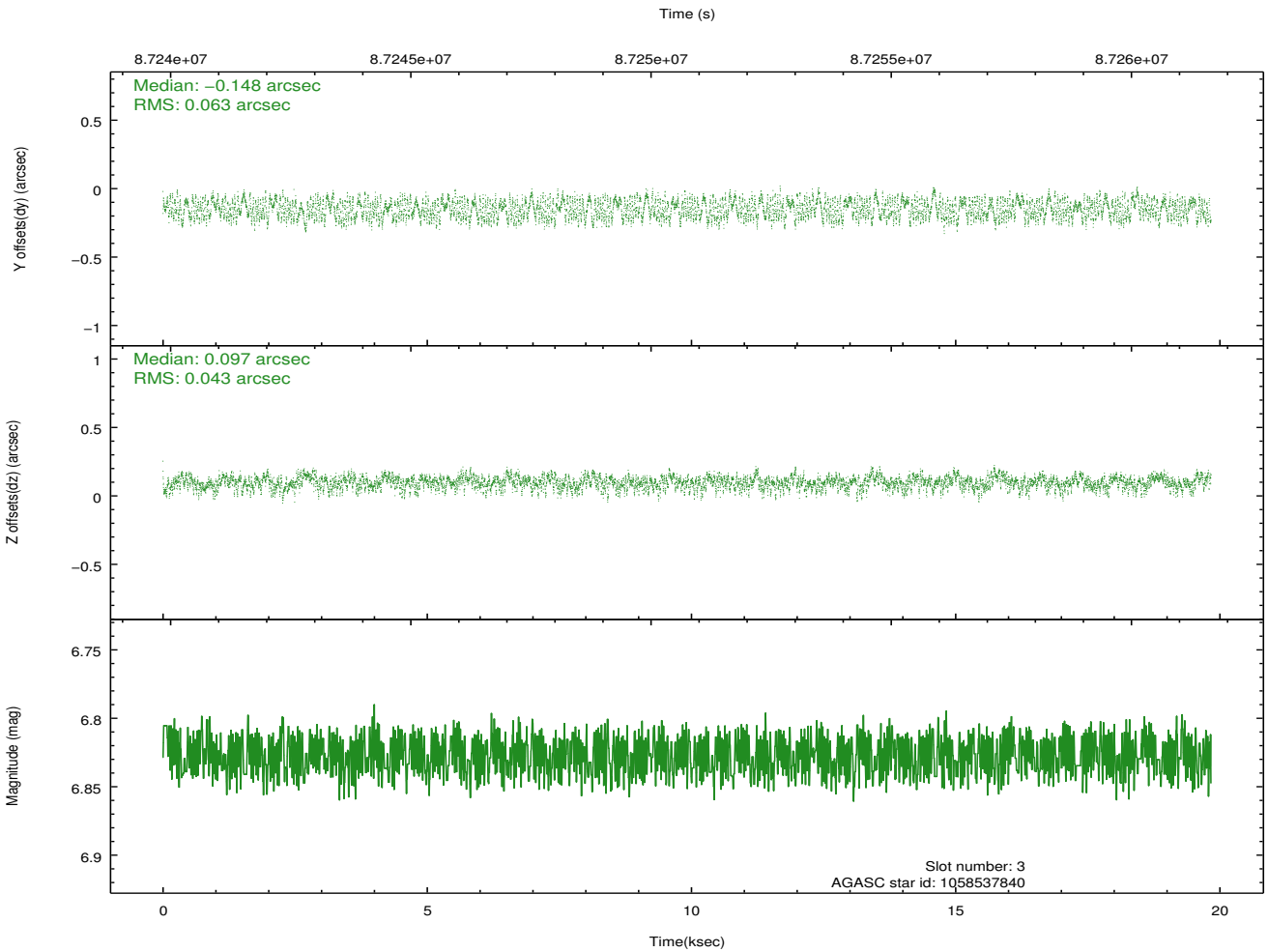
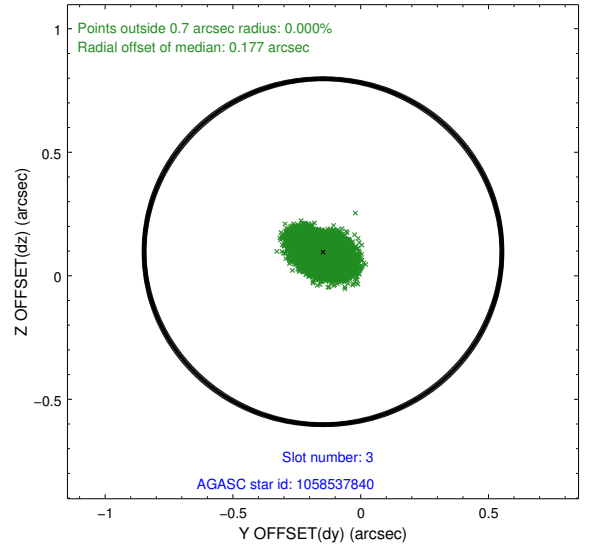
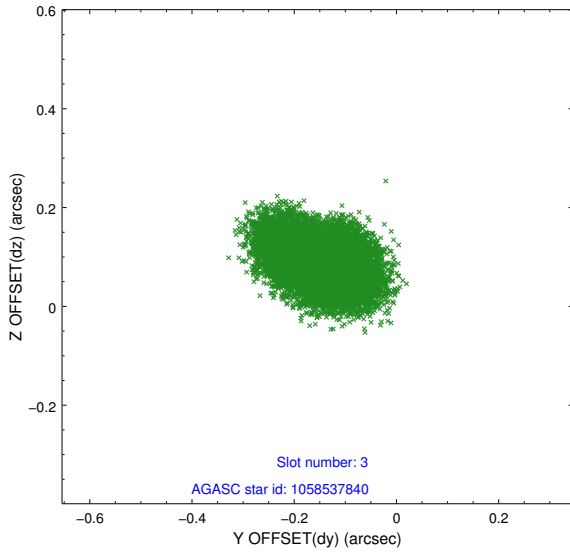


Slot Statistics

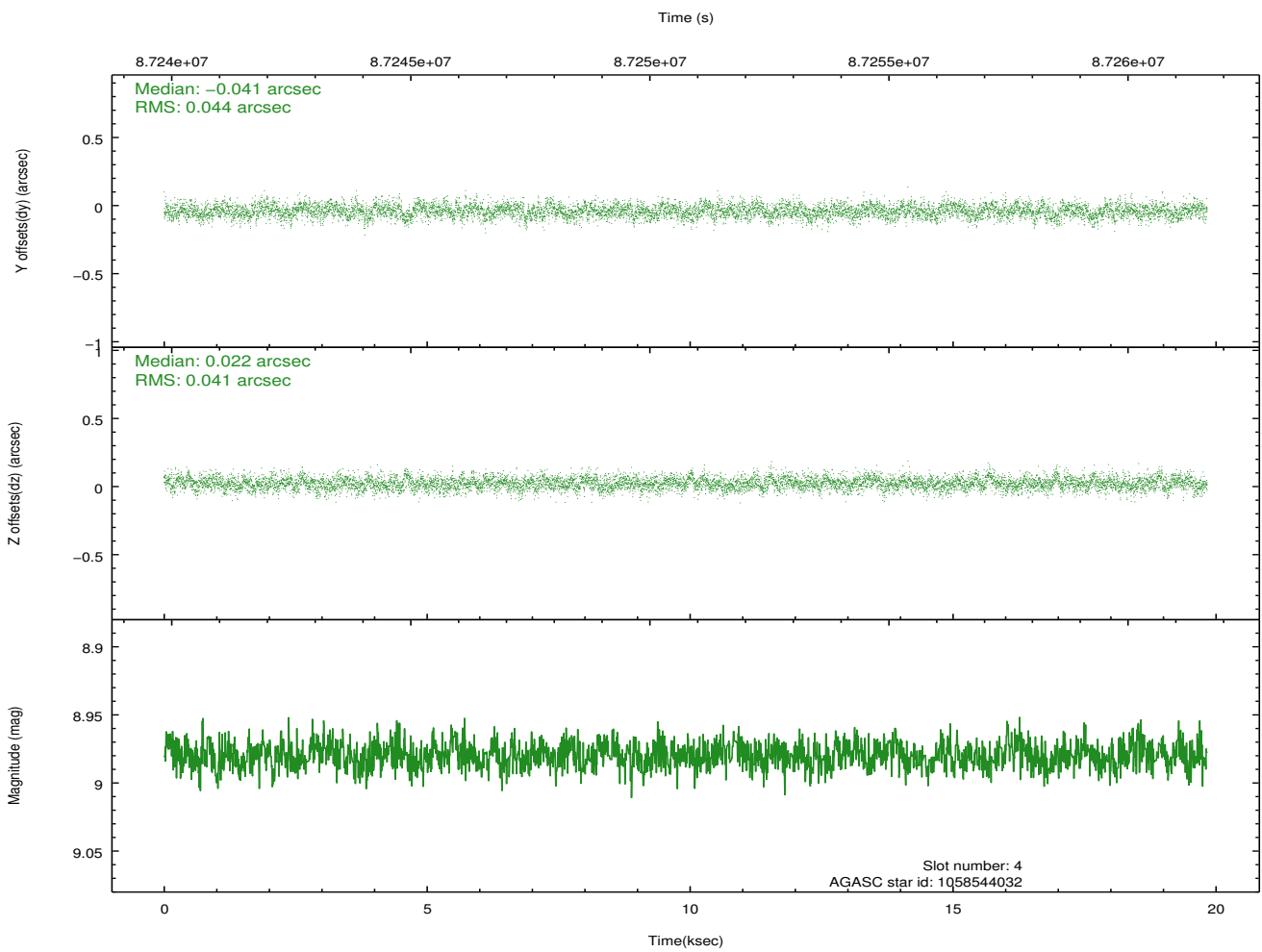
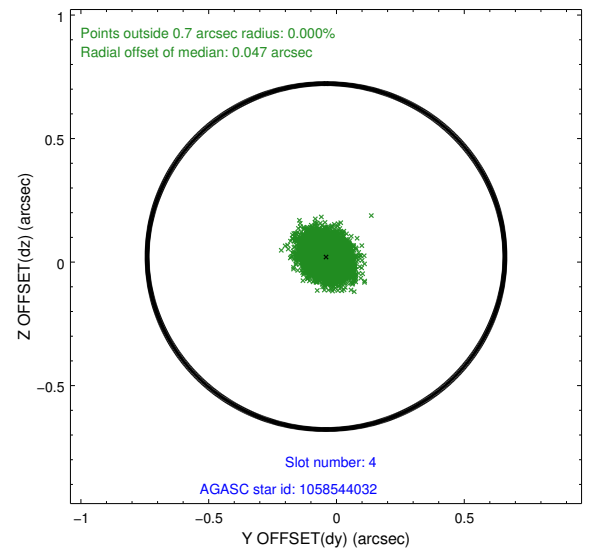
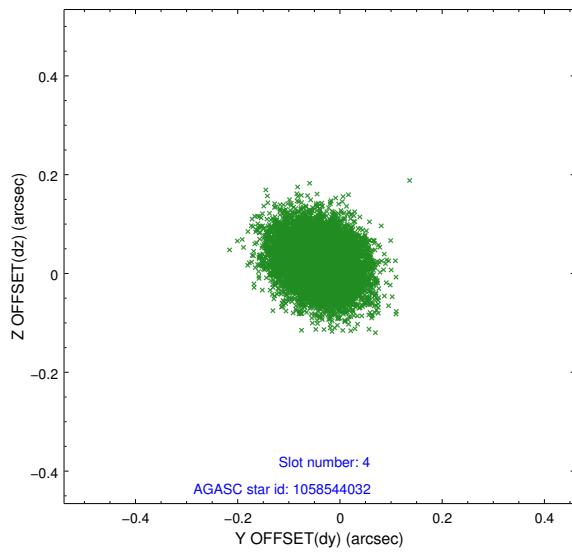
slot	status	id	mag	n_pts	med_dy	med_dz	dr1	dr2	ra	dec	mean_y	mean_z
0	FID	HRC-S-1	7.03	4832	0.108	-0.165	0.016	0.044	0.000000	0.000000	-1156.64	-454.13
1	FID	HRC-S-3	7.04	4827	0.151	-0.039	0.017	0.050	0.000000	0.000000	-1159.59	575.42
2	FID	HRC-S-4	6.99	4828	0.129	-0.091	0.009	0.018	0.000000	0.000000	1241.37	578.23
3	GUIDE	1058537840	6.83	9669	-0.148	0.097	0.084	0.127	70.442463	-47.259783	1373.74	-2368.41
4	GUIDE	1058544032	8.98	9668	-0.041	0.022	0.064	0.105	69.576631	-47.141596	728.92	-307.12
5	GUIDE	1058931064	9.48	9670	0.040	0.044	0.094	0.151	69.760694	-47.722390	-882.95	-1712.07
6	GUIDE	1058546816	9.58	9669	0.056	-0.146	0.134	0.219	68.118478	-47.473802	-2068.54	2197.71
7	GUIDE	1058541248	10.17	9664	0.081	-0.018	0.115	0.190	69.904987	-47.056466	1386.16	-862.73

2.4 Star Slots

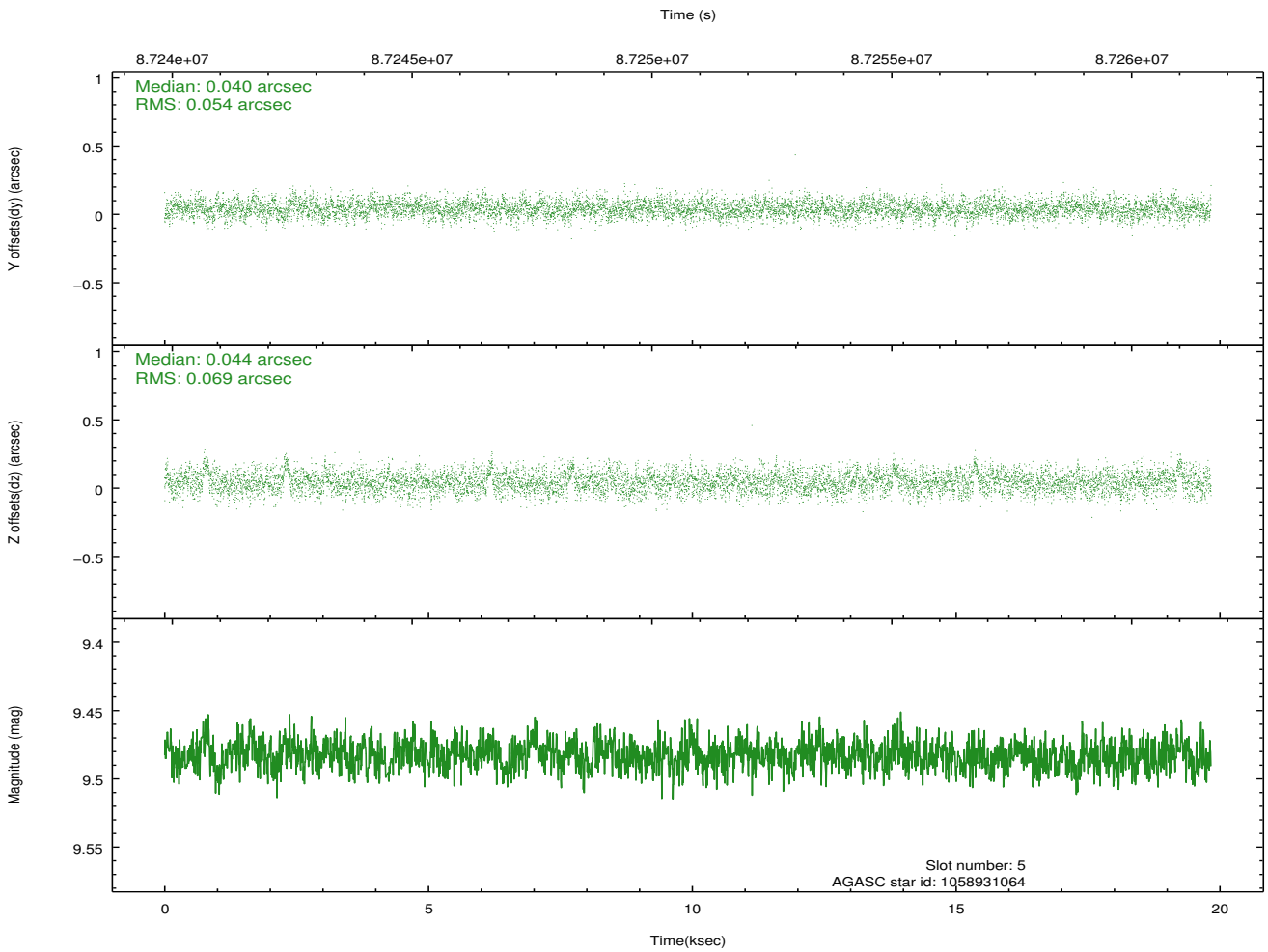
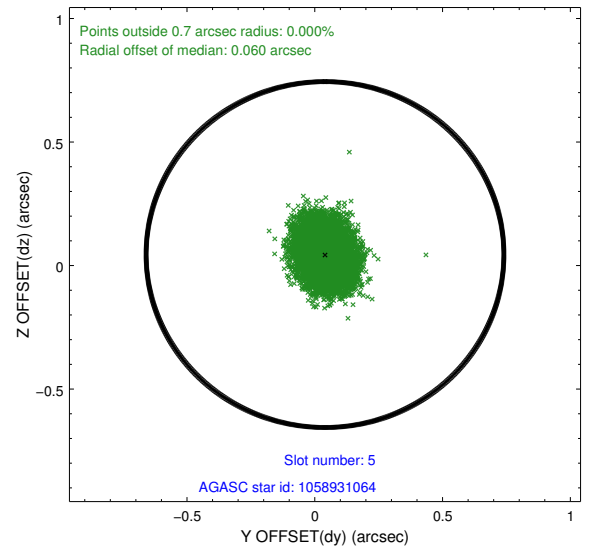
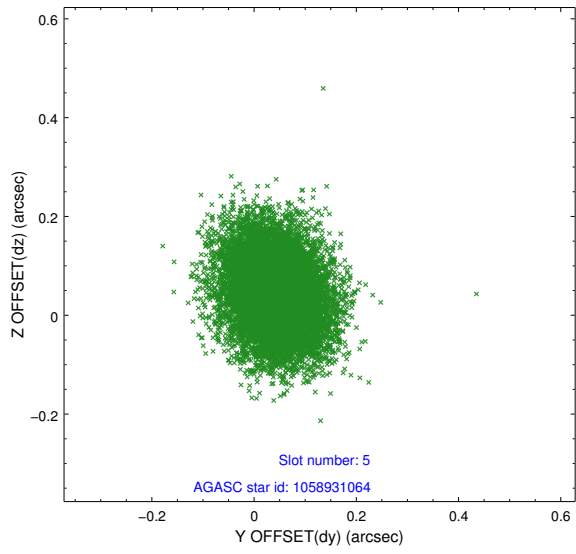
2.4.1 Slot 3



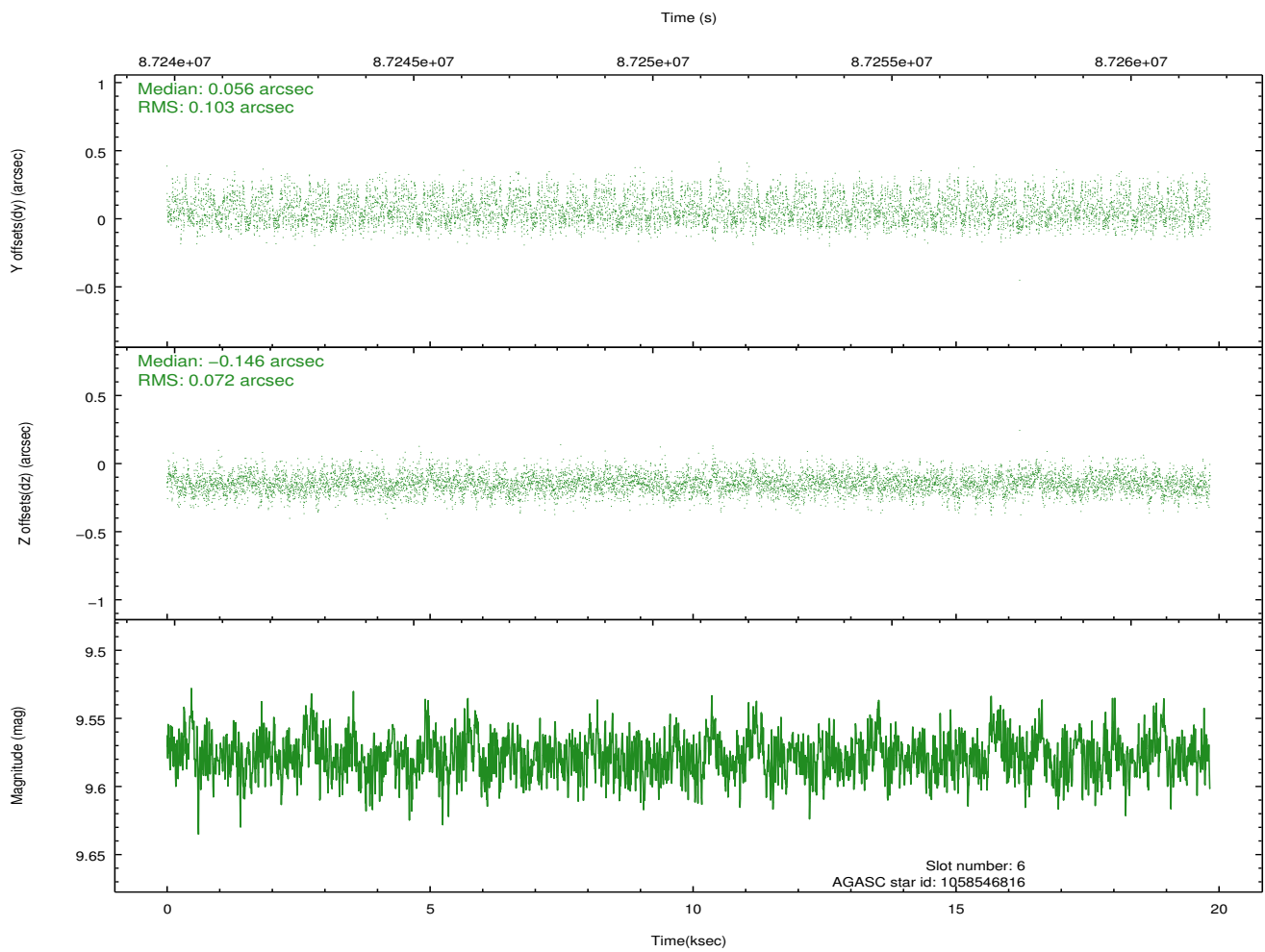
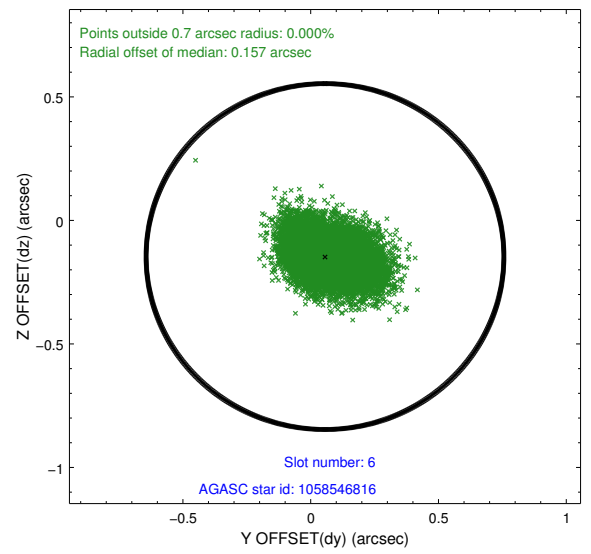
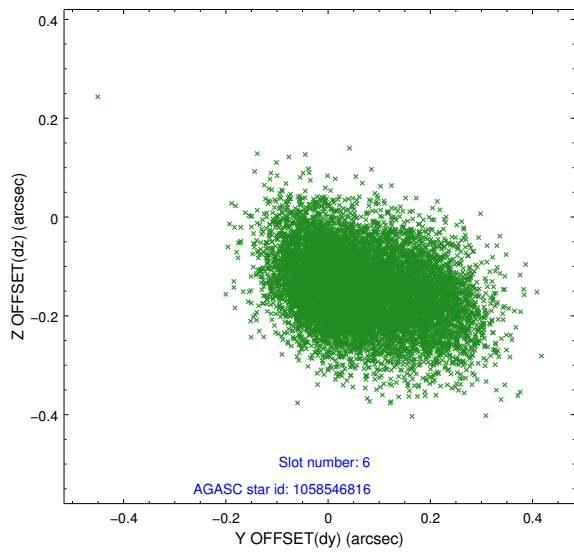
2.4.2 Slot 4



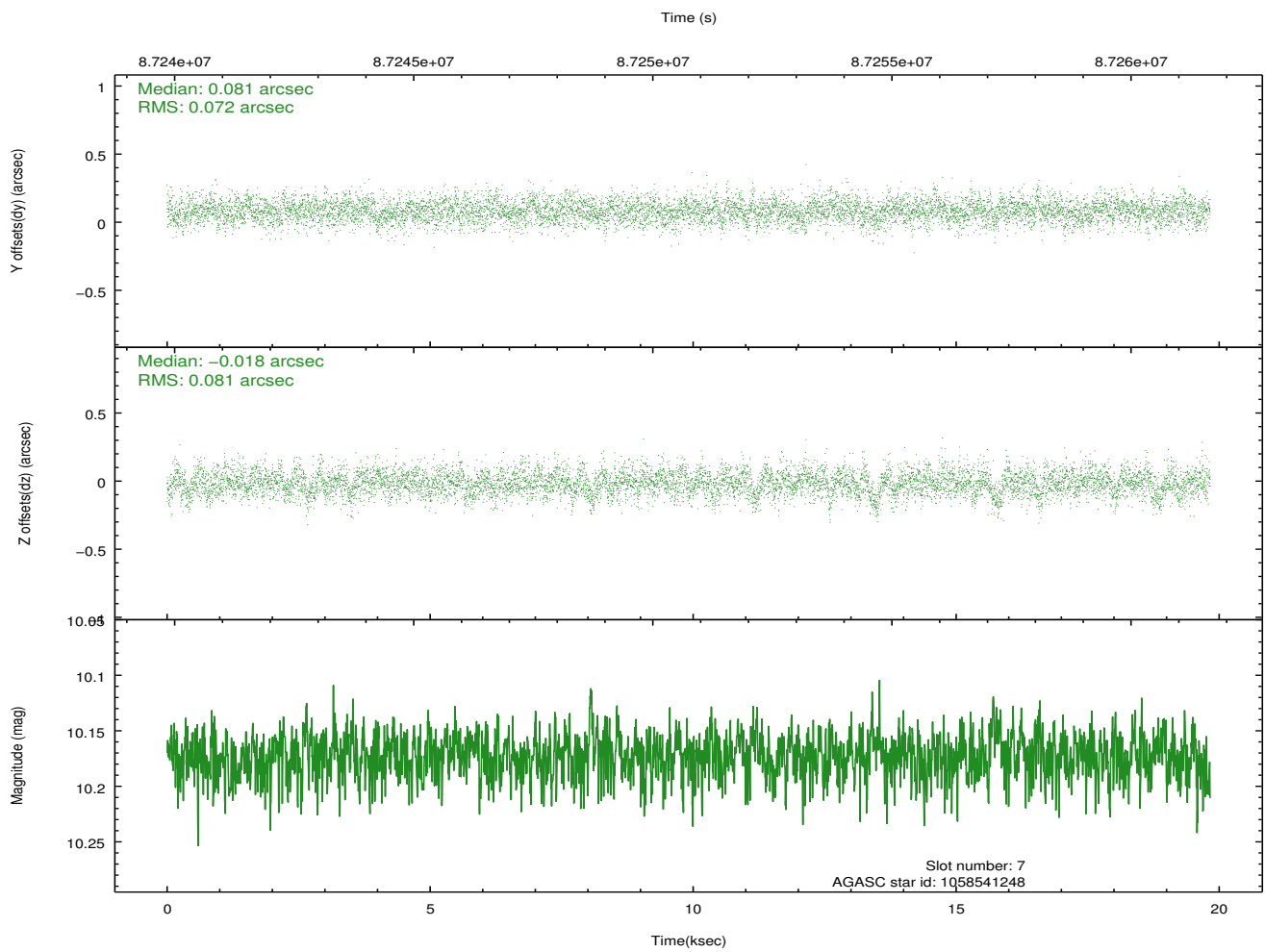
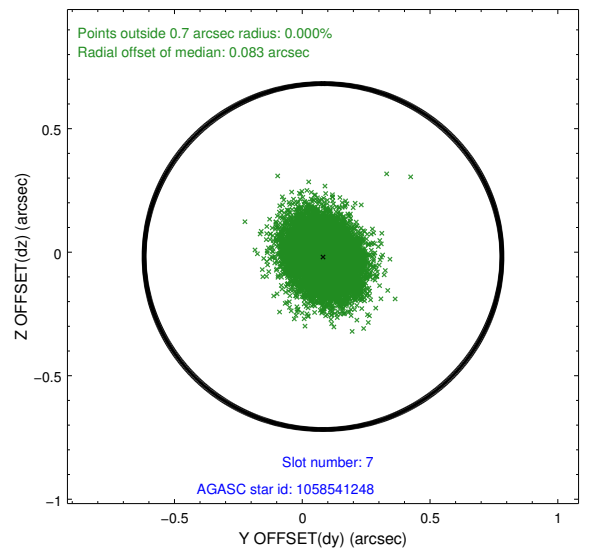
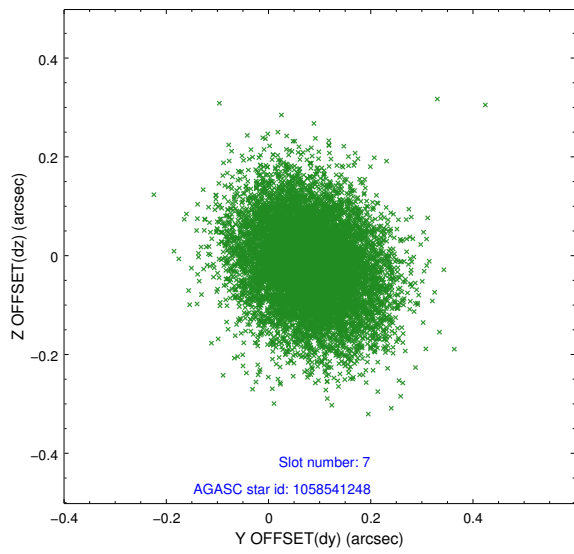
2.4.3 Slot 5



2.4.4 Slot 6

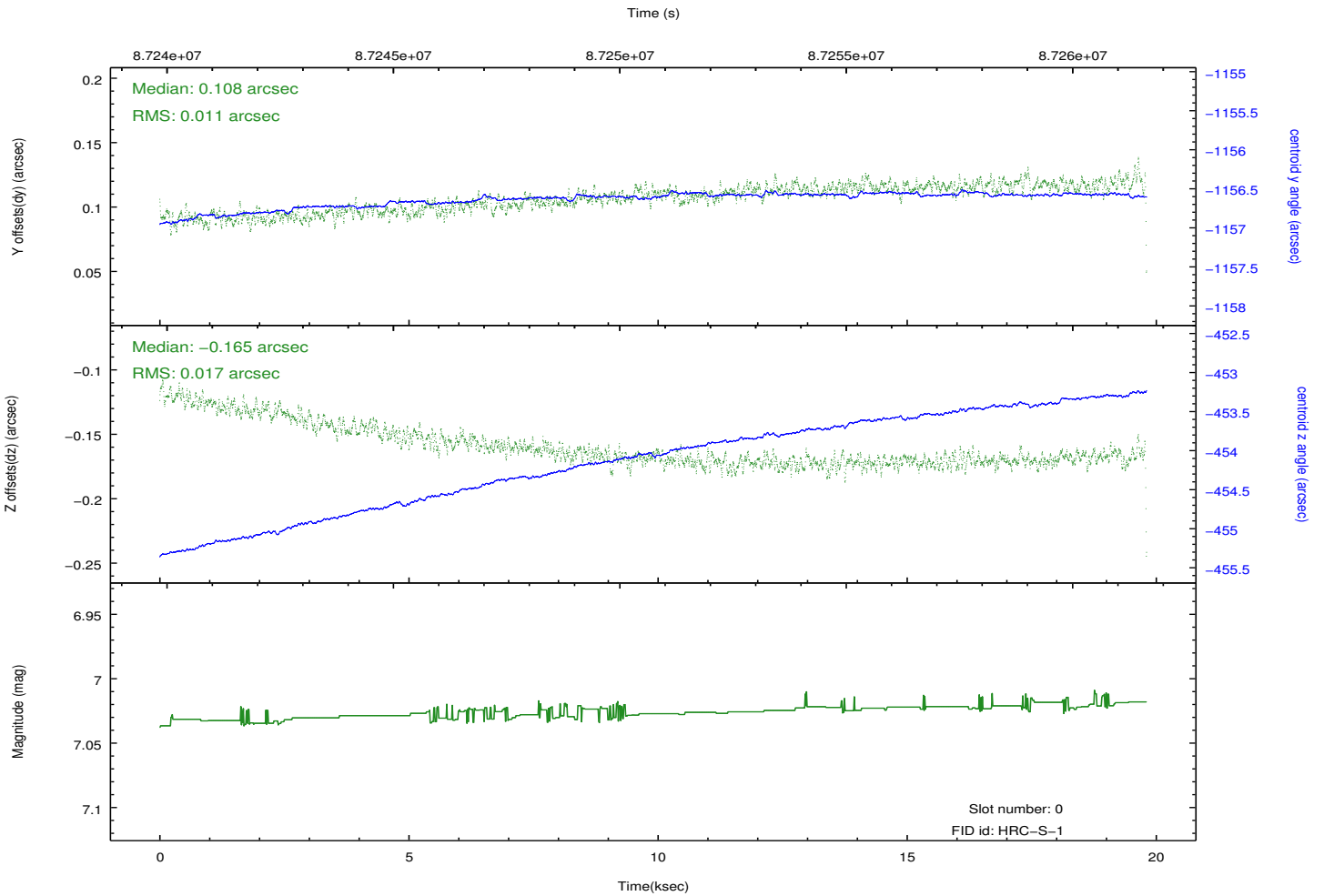
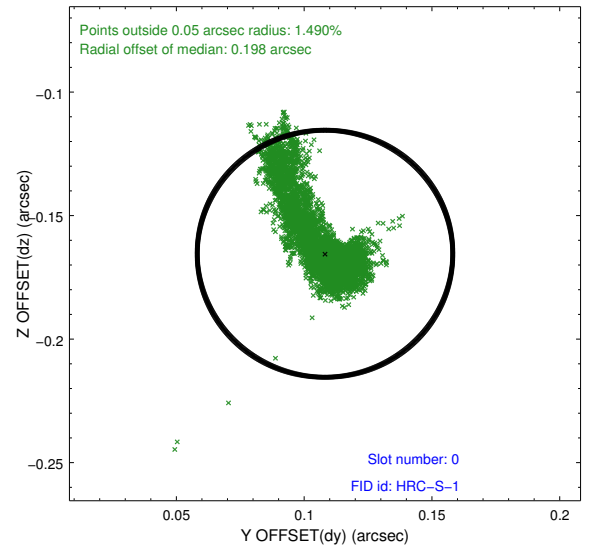
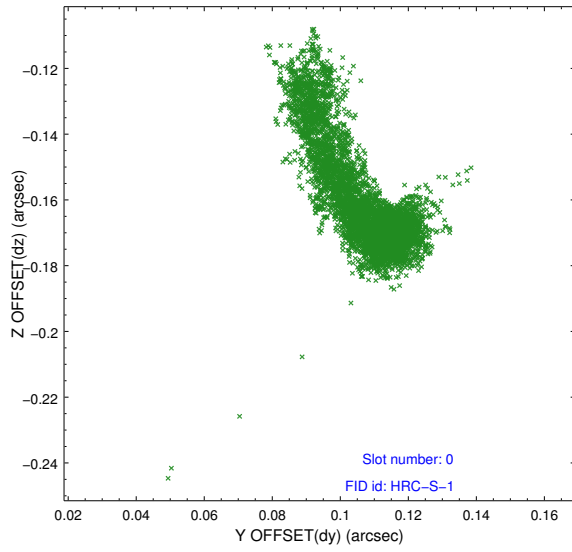


2.4.5 Slot 7

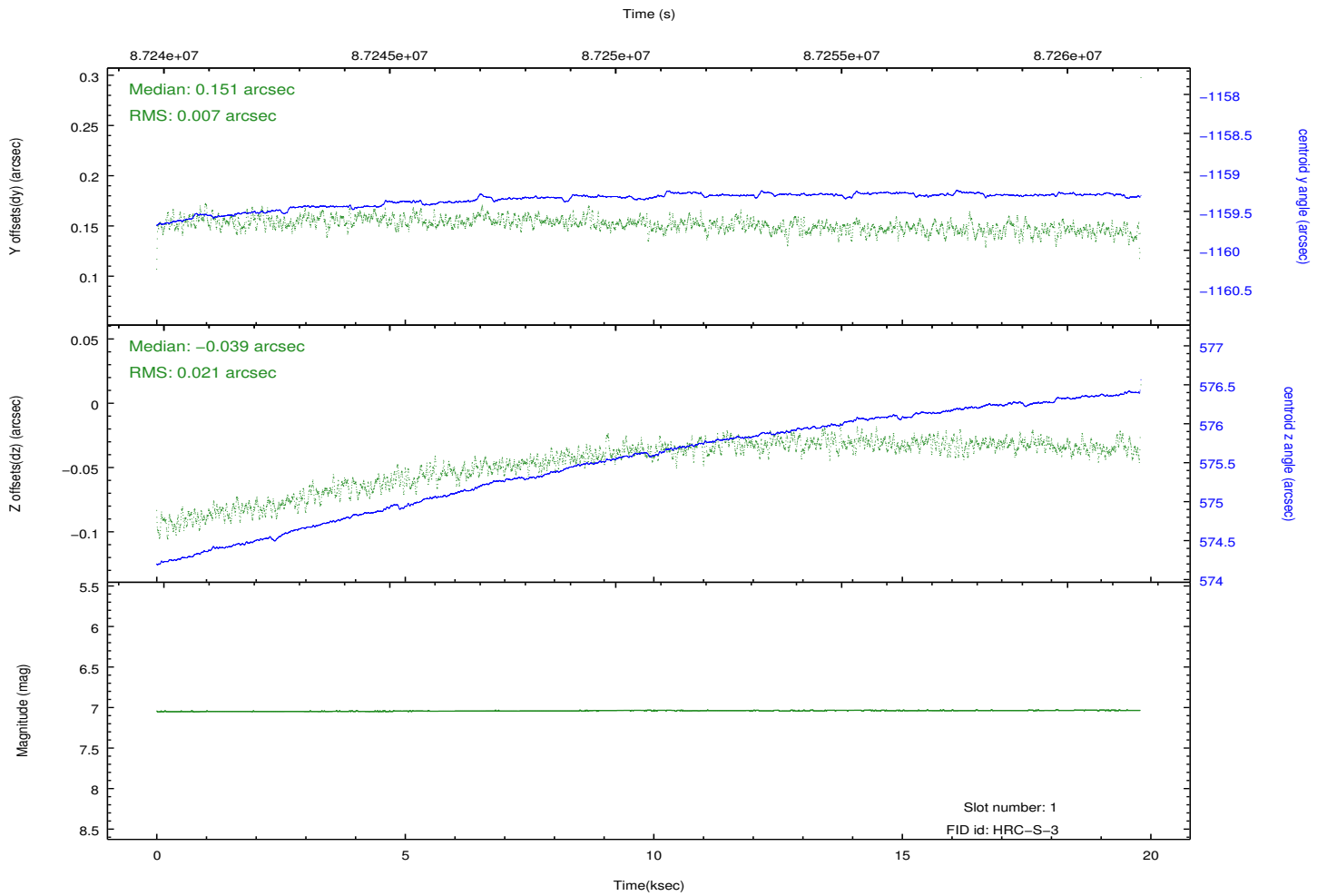
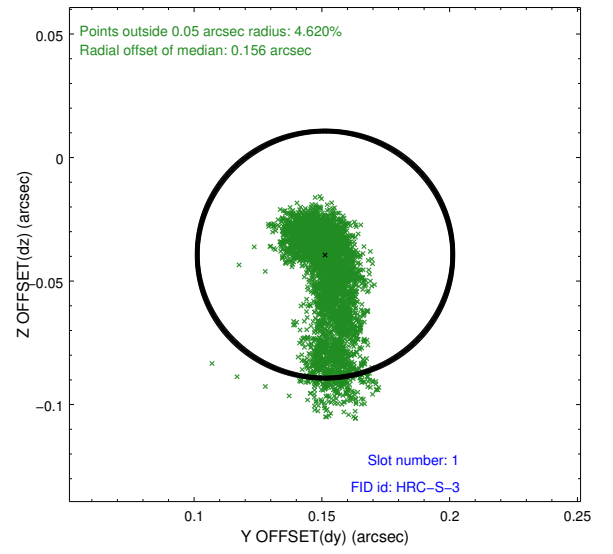
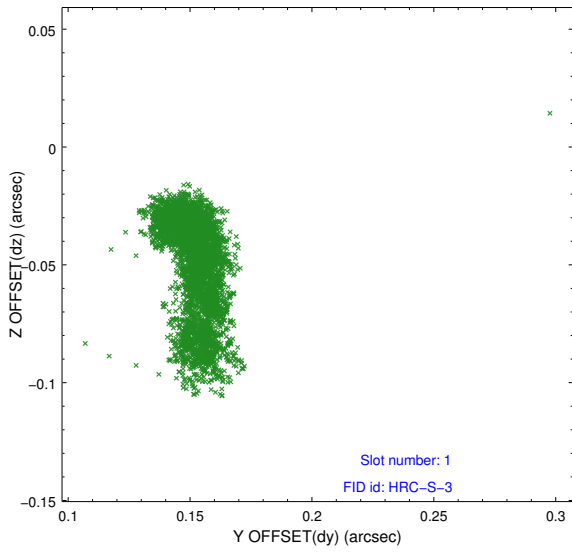


2.5 FID Slots

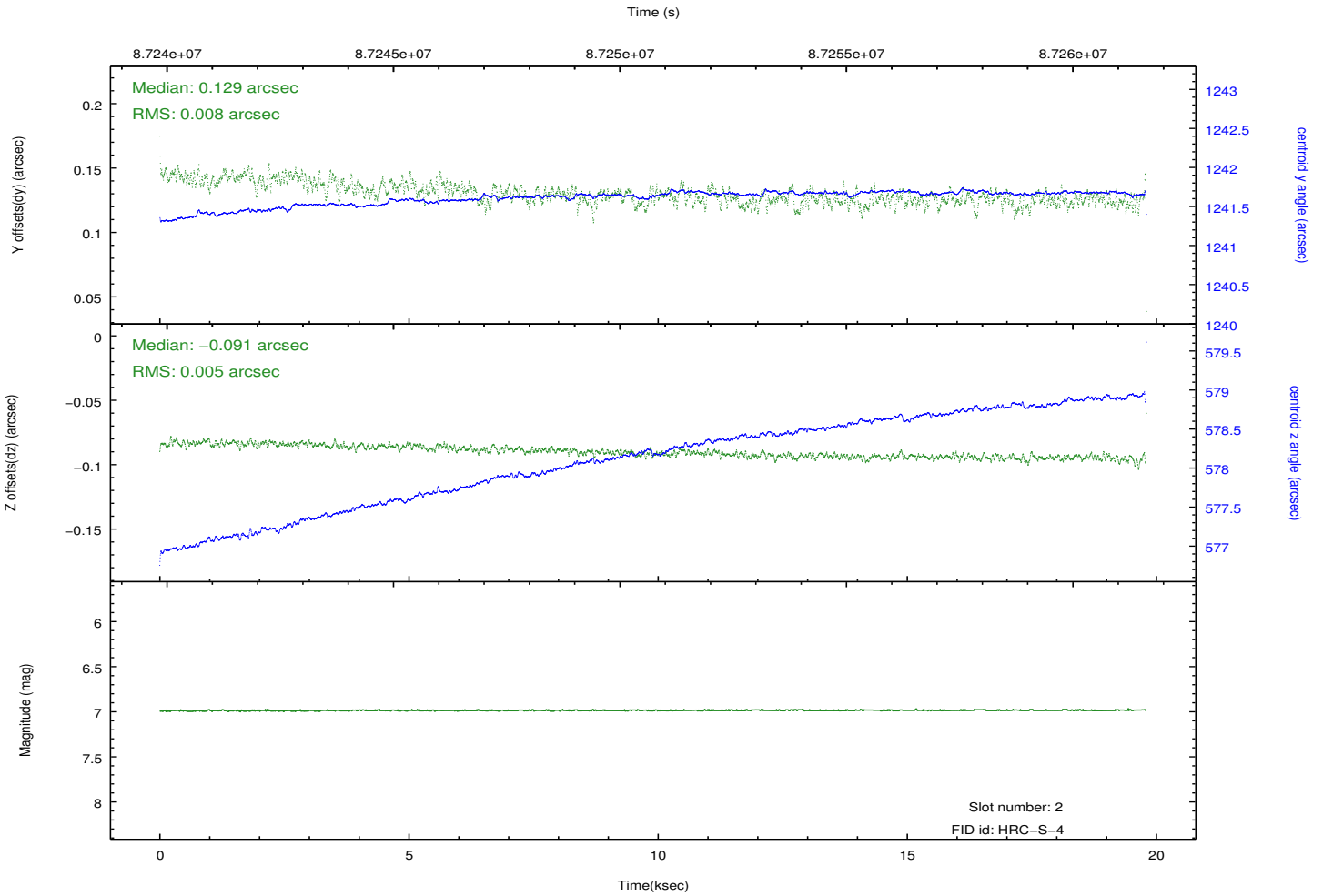
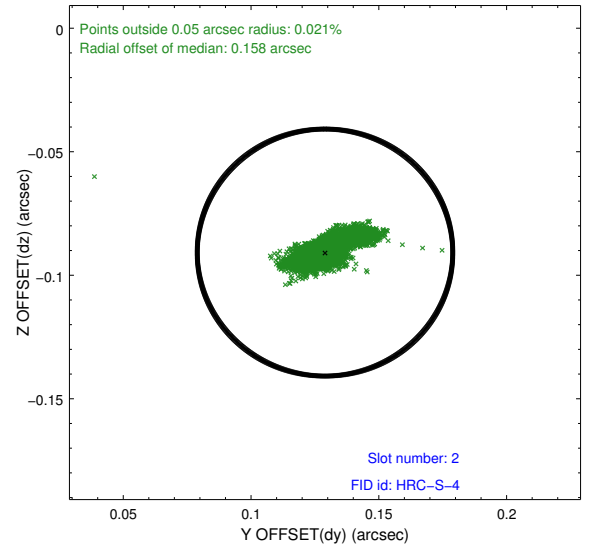
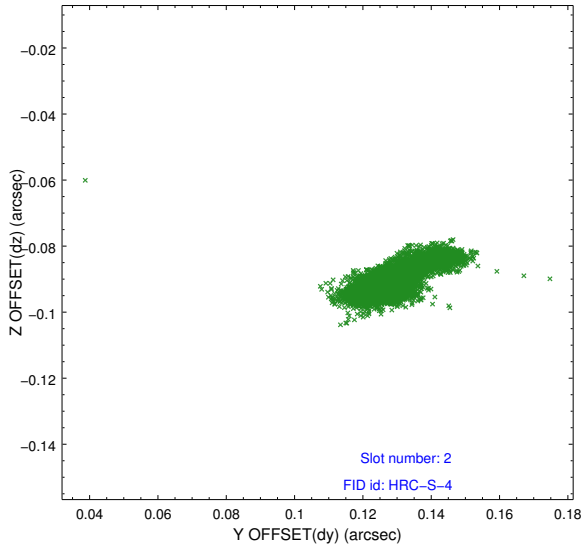
2.5.1 Slot 0



2.5.2 Slot 1



2.5.3 Slot 2



A Summary

A.1 Status

V&V Scientist	Beth Sundheim
V&V Date (YYYY-MM-DD)	2013.07.02
V&V Edition	1
V&V Disposition and Status	OK
V&V Charge Time	19.708

A.2 Comments