

V&V Reference Report

L2 ASCDS Version : 8.5.1.1

Observation 1900 - L2 Version 3
Chandra X-Ray Center

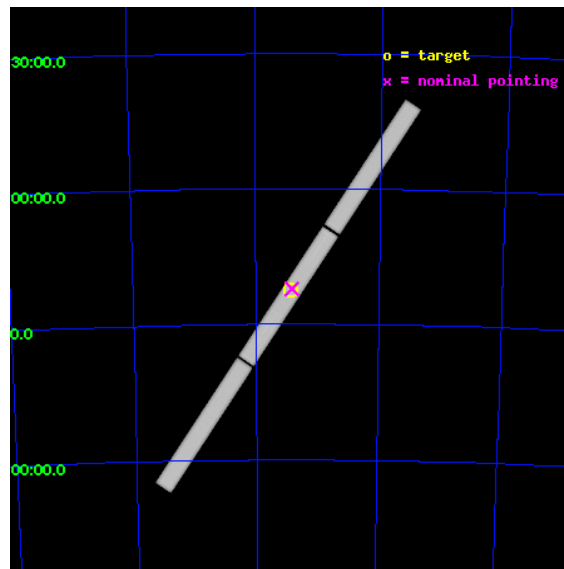
L2 Processing Date : Jan 7 2013

Contents

1	Front	2
2	OBI	3
2.1	OBI	3
2.1.1	Images	3
2.1.2	Parameters	4
2.1.3	Events	4
2.2	Compared Parameters	5
2.3	Aspect	6
2.4	Star Slots	9
2.4.1	Slot 3	9
2.4.2	Slot 4	10
2.4.3	Slot 5	11
2.4.4	Slot 6	12
2.4.5	Slot 7	13
2.5	FID Slots	14
2.5.1	Slot 0	14
2.5.2	Slot 1	15
2.5.3	Slot 2	16
3	Gratings	17
3.1	LETG Arm	17
A	Summary	19
A.1	Status	19
A.2	Comments	19

1 Front

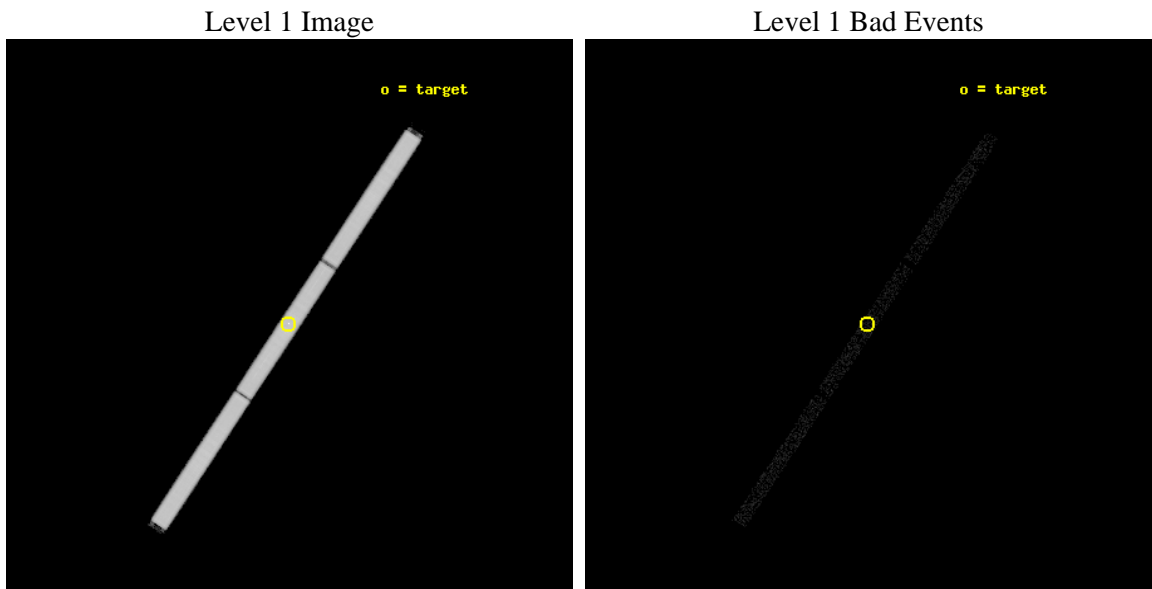
seq_num	300048	Sequence number
obs_id	1900	Observation id
title	A HIGH RESOLUTION SPECTROSCOPIC OBSERVATION OF CAL 83	Proposal tit
observer	Prof. FREDERIK PAERELS	Principal investigator
object	CAL 83	Source name
ra_targ	85.892083	Observer's specified target RA [deg]
dec_targ	-68.372944	Observer's specified target Dec [deg]
ra_nom	85.885449024045	Nominal RA [deg]
dec_nom	-68.368910534354	Nominal Dec [deg]
roll_nom	123.40480613571	Nominal Roll [deg]
revision	3	Processing version of data
ontime	35421.951395616	[s]
livetime	34159.822137238	Ontime multiplied by DTCOR
l2events	2033854	Number of level 2 events



2 OBI

2.1 OBI

2.1.1 Images



2.1.2 Parameters

obi_num	0	Obi number	sched_exp_time	93800.000000	[s] Scheduled observation exposure time
ascdsver	8.5.1.1	Processing system revision	ontime	35421.951395616	[s]
caldbver	4.5.5	 	l1events	2848191	Number of level 1 events
date	2013-01-07T20:30:50	Date and time of file creation			
revision	3	Processing version of data			

2.1.3 Events

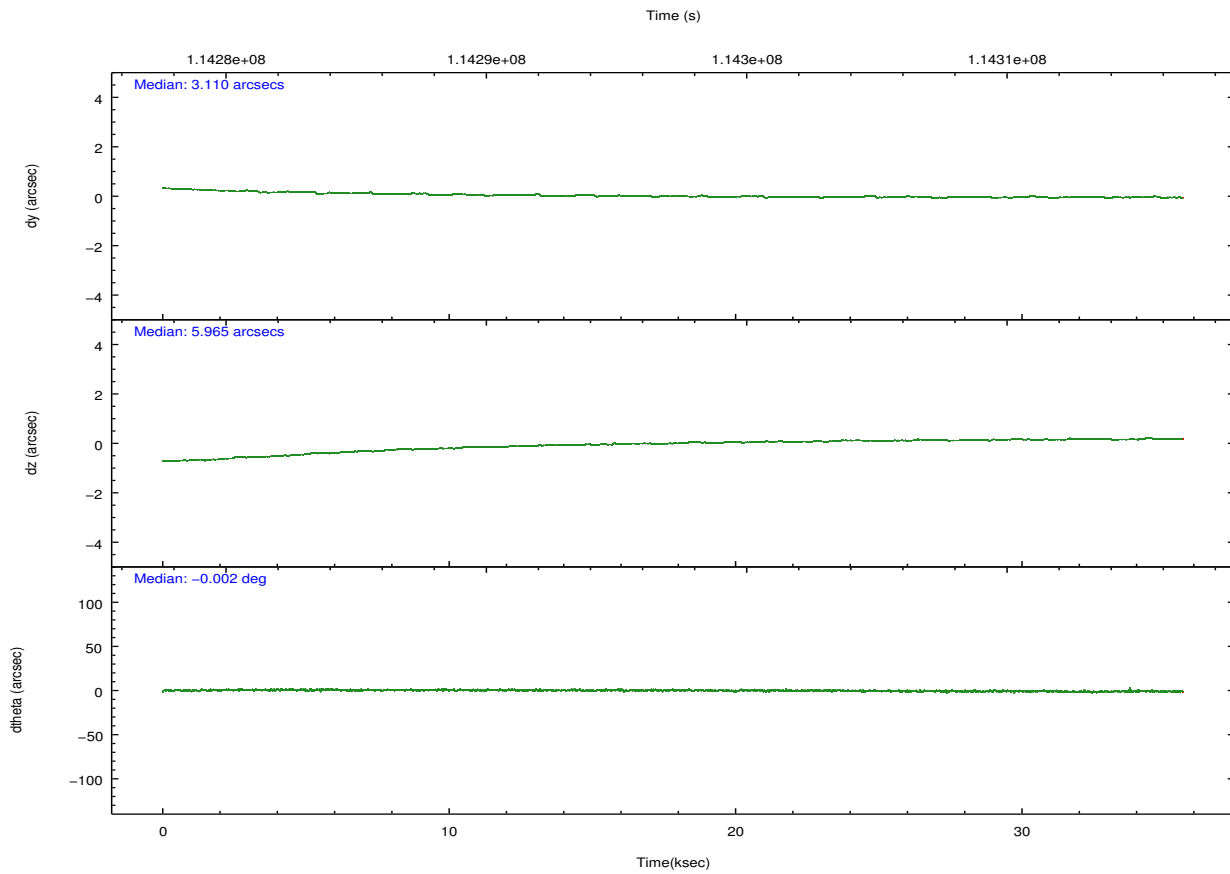
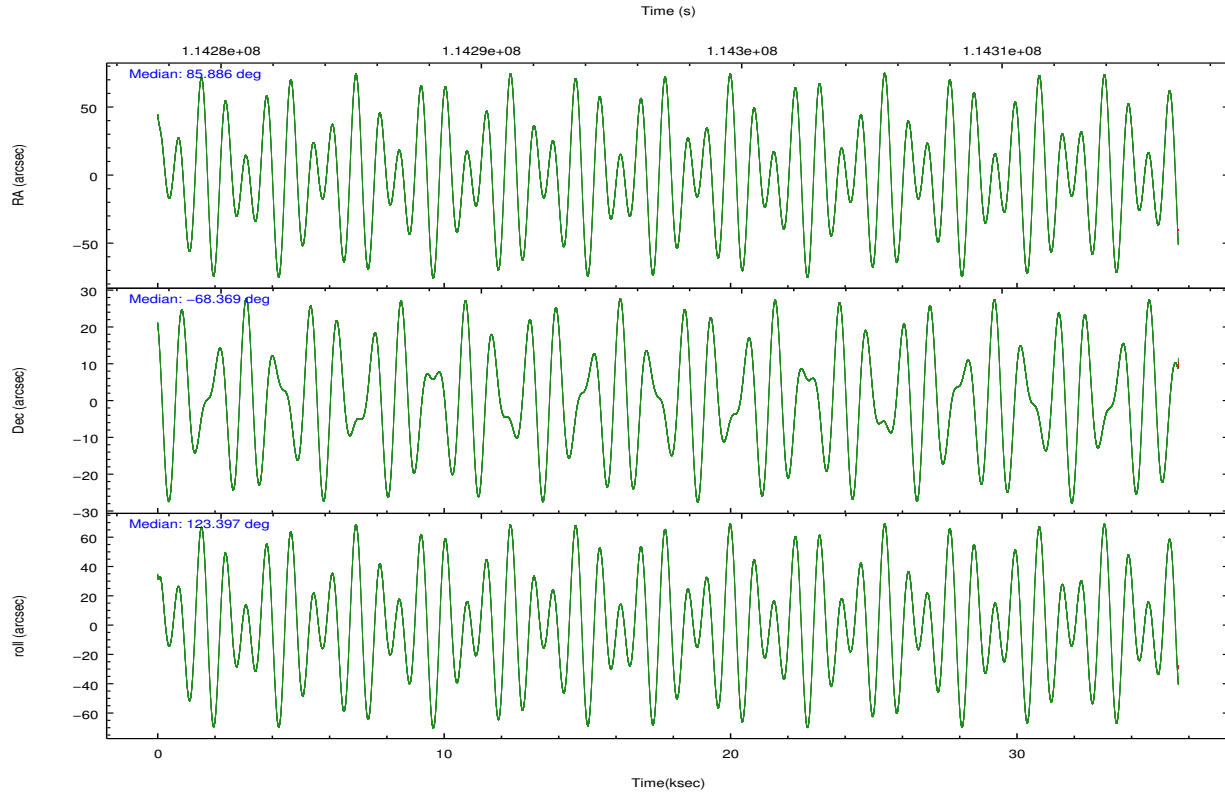
Level 1 Events

	segment 1	segment 2	segment 3
level 1 events	968068	939154	940969
rejected events	2513	2378	2305
rejected %	0%	0%	0%

2.2 Compared Parameters

Parameter	Planned	Actual	Parameter	Planned	Actual
Instrument	HRC	HRC	Obspar format version number	7	7
Detector	HRC-S	HRC-S	Obspar file type	PREDICTED	ACTUAL
Grating	LETG	LETG	Obspar update status	NONE	UPDATED
Data mode	OBSERVING	OBSERVING			
Observation mode	POINTING	POINTING			
[deg] Pointing RA	85.956451	85.88544902404453			
[deg] Pointing Dec	-68.380466	-68.36891053435427			
[deg] Pointing Roll	123.403472	123.4048061357093			
[mm] SIM focus pos	-1.429586	-1.428180813131781			
[mm] SIM defocus	0.1037507710433287	0.1051558262725154			
[mm] SIM translation stage pos	250.455976	250.466033080201			
[mm] SIM translation stage offset	0	-0.01005468664627074			
[s] Observation start time (MET)	114279535.184000	114278600.88647			
Observation start date	2001-08-15T16:17:51	2001-08-15T16:03:20			
[s] Observation end time (MET)	114373335.184000	114315000.1754			
Observation end date	2001-08-16T18:21:11	2001-08-16T02:10:00			

2.3 Aspect

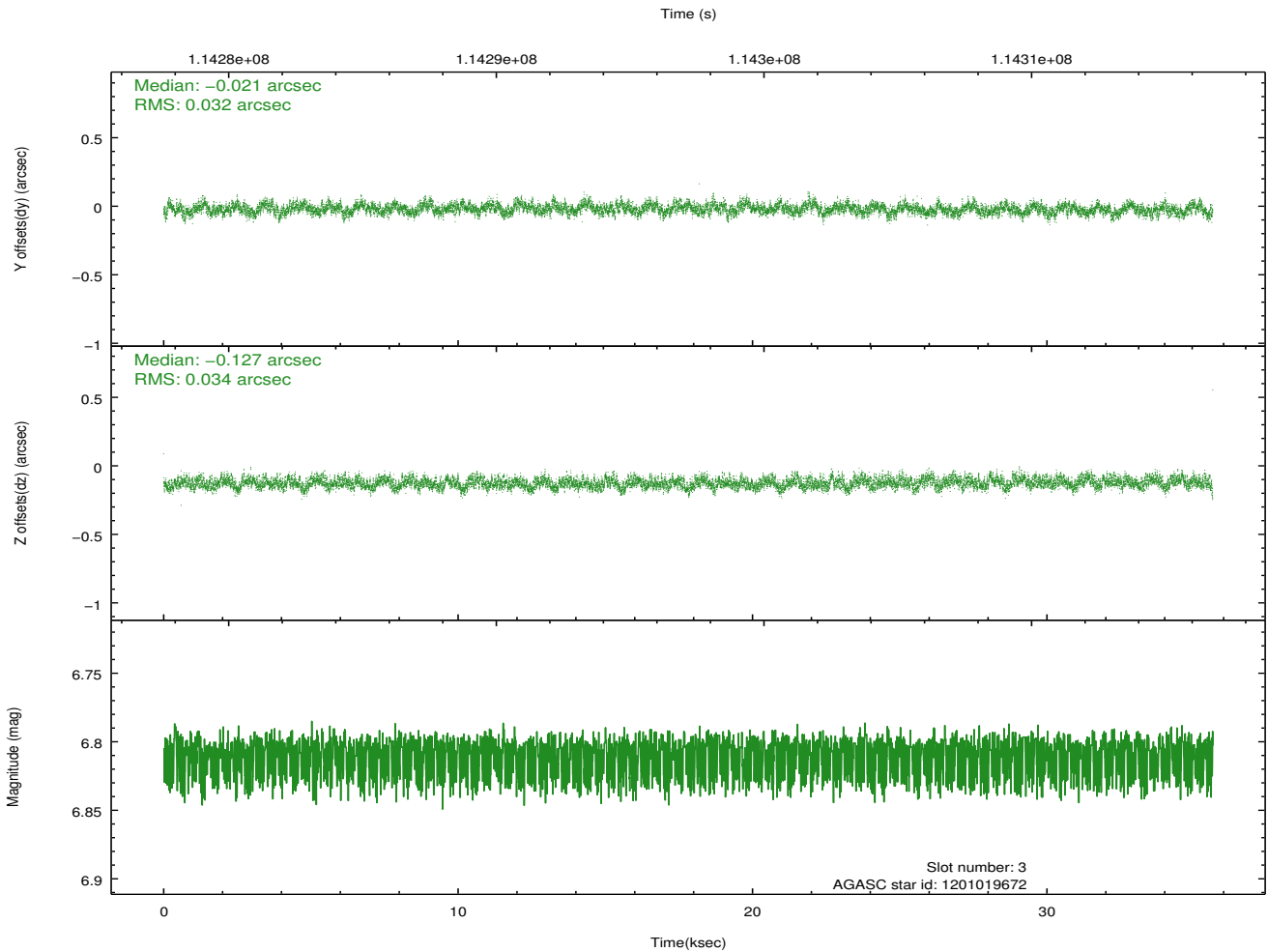
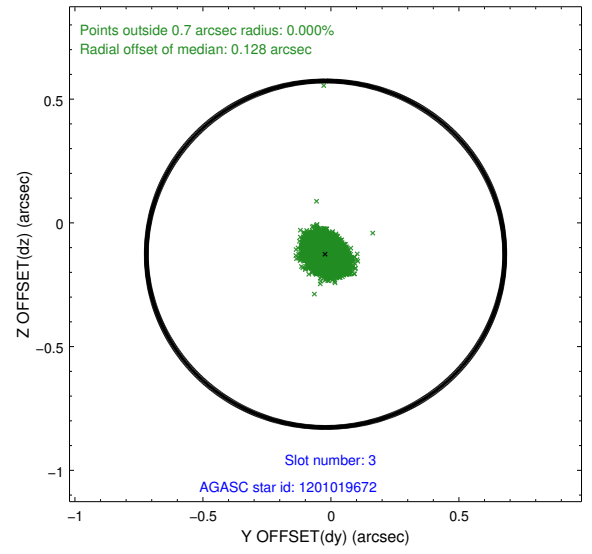
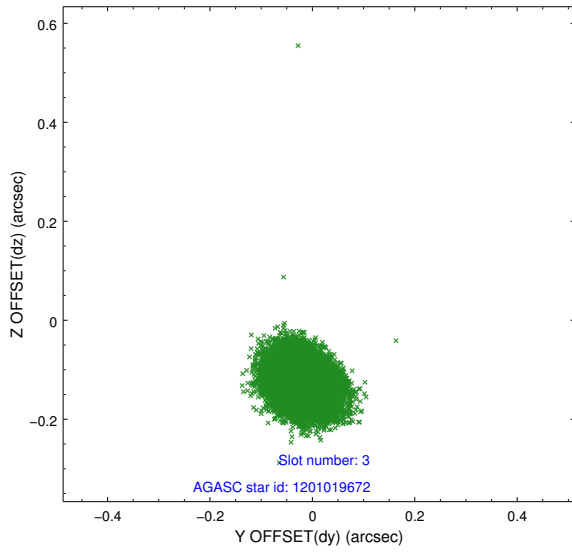


Slot Statistics

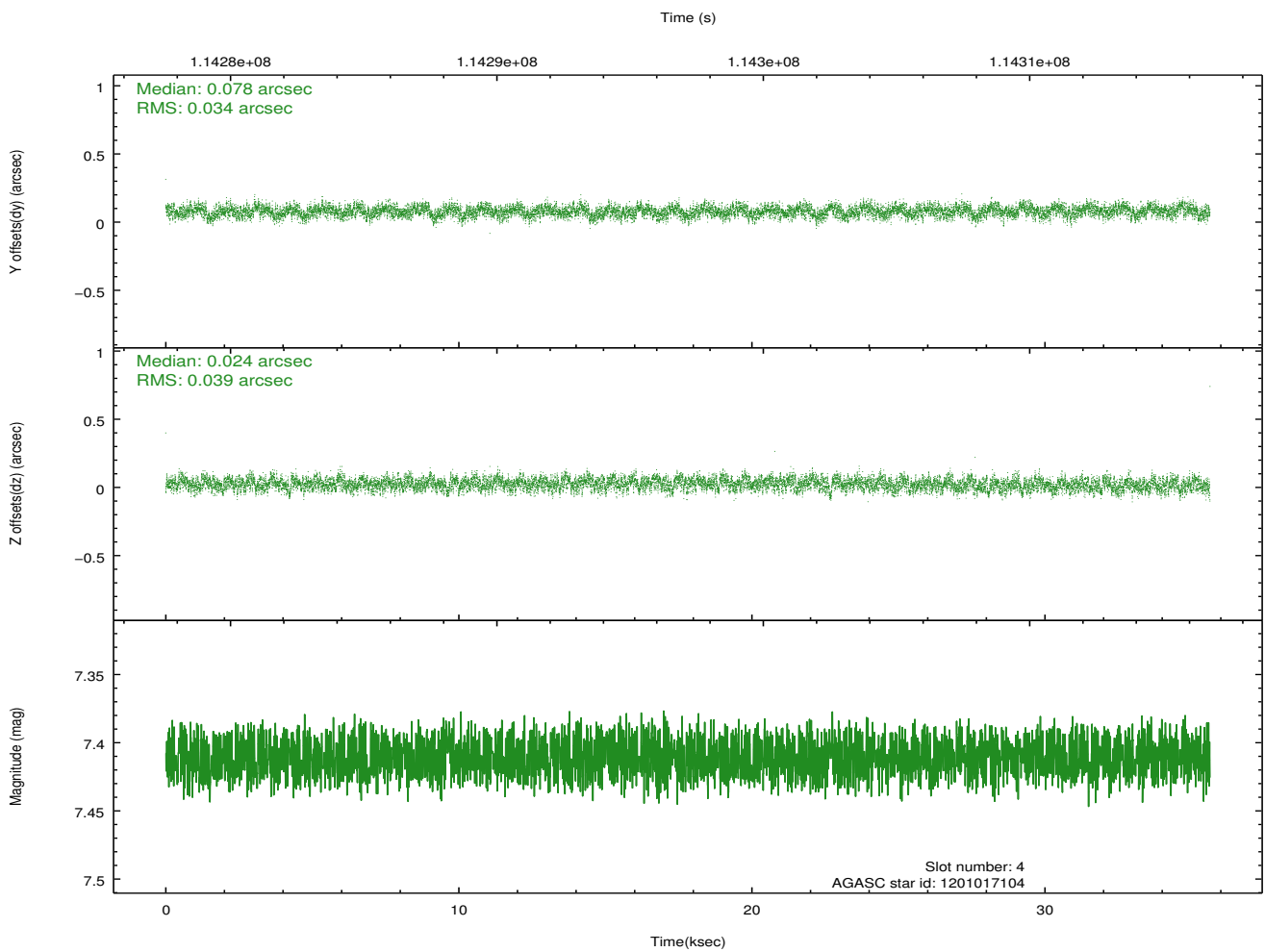
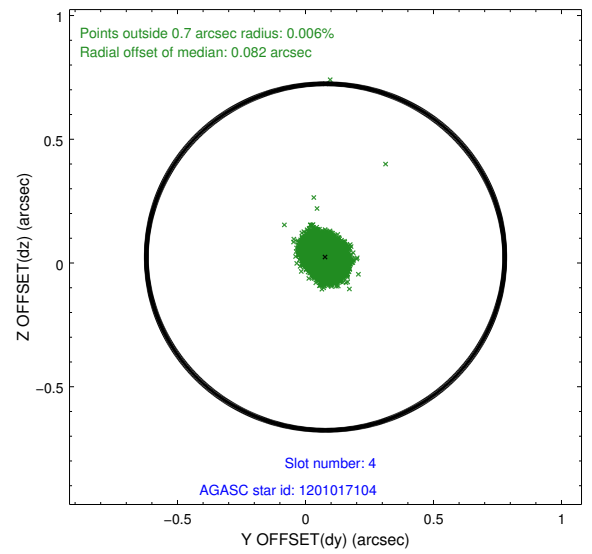
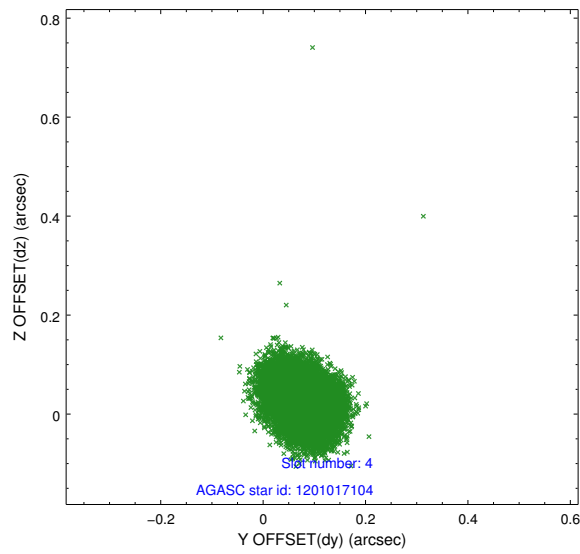
slot	status	id	mag	n_pts	med_dy	med_dz	dr1	dr2	ra	dec	mean_y	mean_z
0	FID	HRC-S-1	6.98	8689	0.154	-0.143	0.014	0.022	0.000000	0.000000	-1157.19	-454.39
1	FID	HRC-S-2	6.98	8691	0.093	-0.095	0.013	0.025	0.000000	0.000000	1242.31	-447.08
2	FID	HRC-S-3	7.00	8690	0.142	-0.063	0.011	0.017	0.000000	0.000000	-1159.76	575.17
3	GUIDE	1201019672	6.81	17383	-0.021	-0.127	0.050	0.079	85.312192	-68.770187	-713.08	1476.49
4	GUIDE	1201017104	7.41	17373	0.078	0.024	0.056	0.087	85.906081	-68.081291	936.25	-535.41
5	GUIDE	1200882176	7.67	17370	0.053	-0.037	0.052	0.085	83.665480	-68.205126	2164.49	2240.67
6	GUIDE	1201018736	7.04	17376	-0.127	0.206	0.050	0.080	86.842587	-67.758053	1198.64	-2235.56
7	GUIDE	1201020040	8.58	17376	0.015	-0.069	0.065	0.107	85.379163	-68.879396	-1090.57	1616.37

2.4 Star Slots

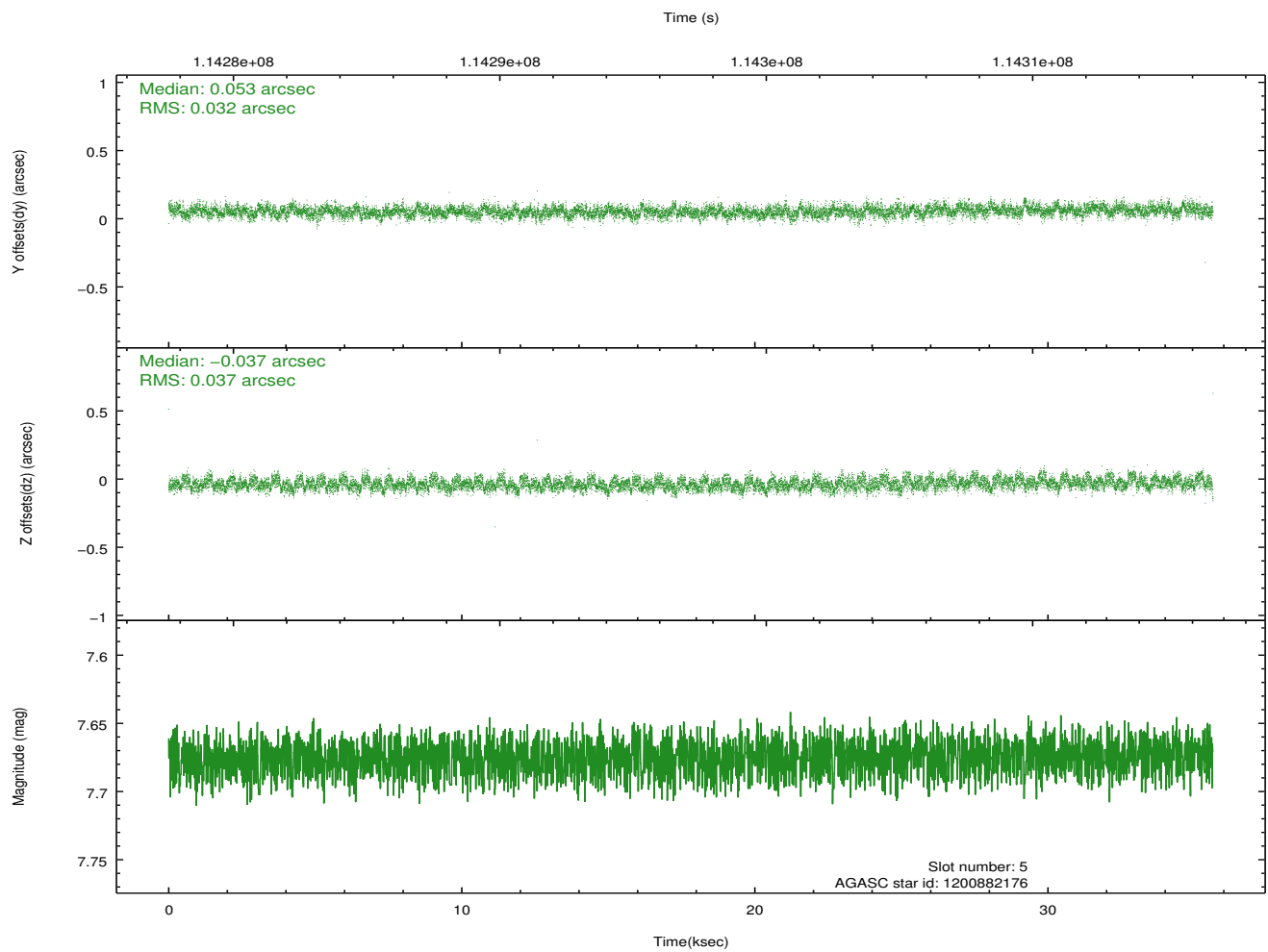
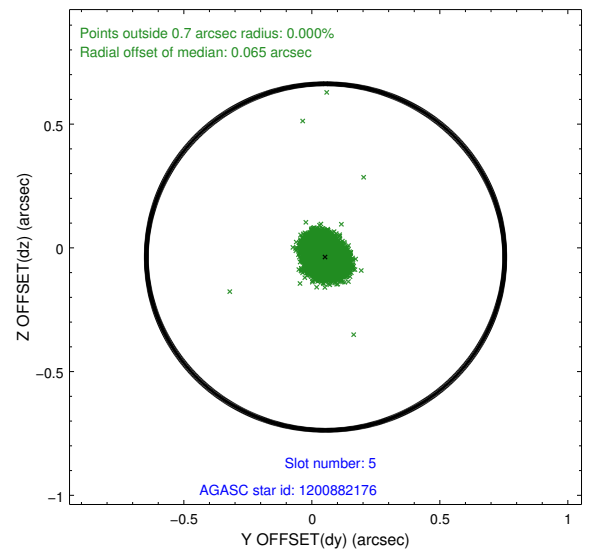
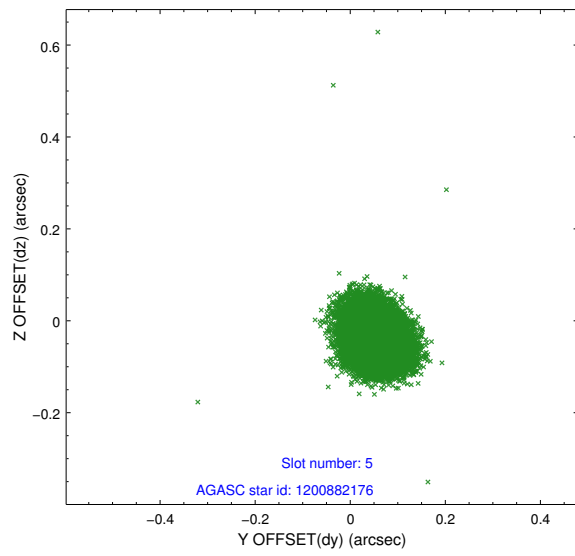
2.4.1 Slot 3



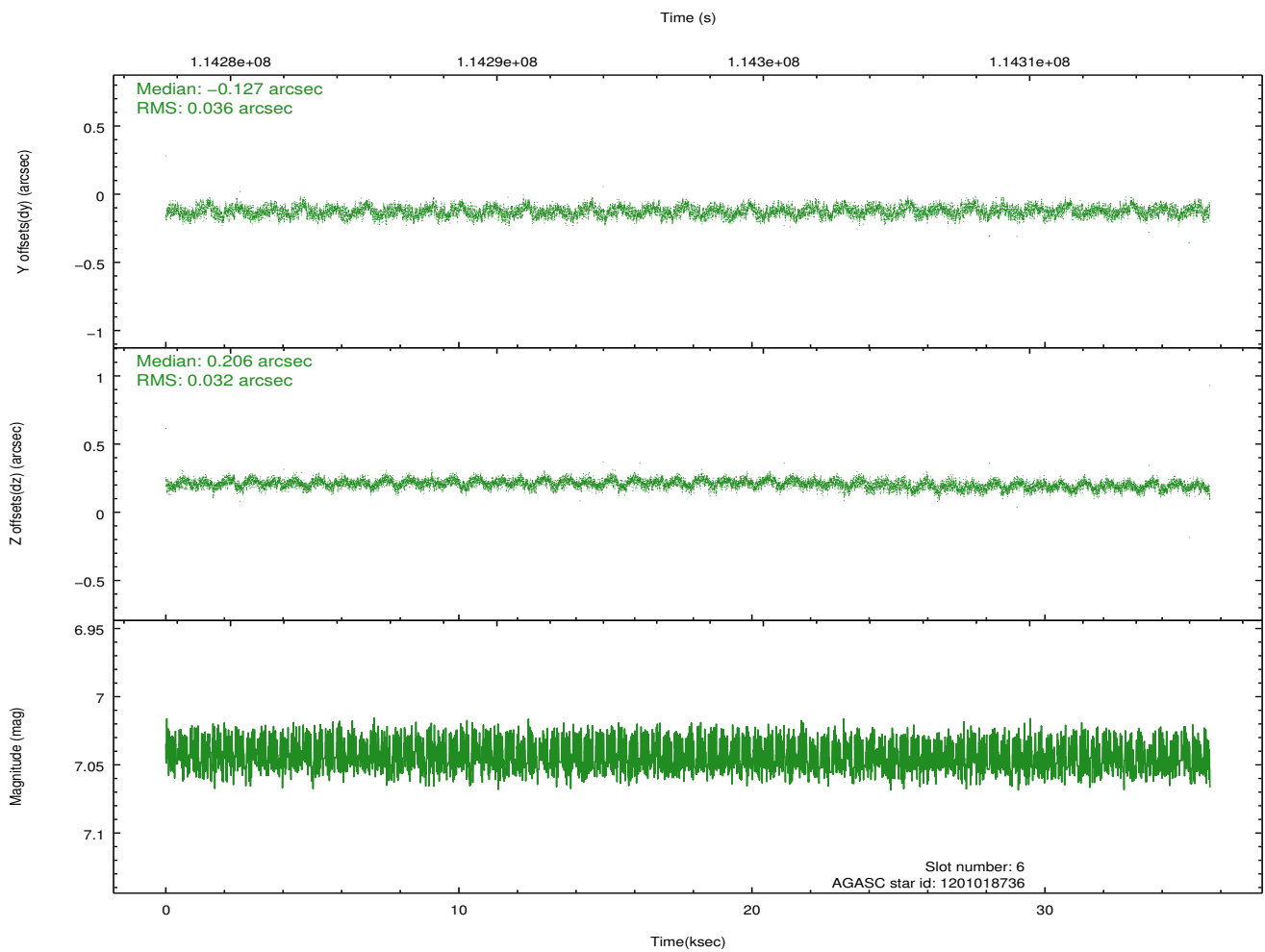
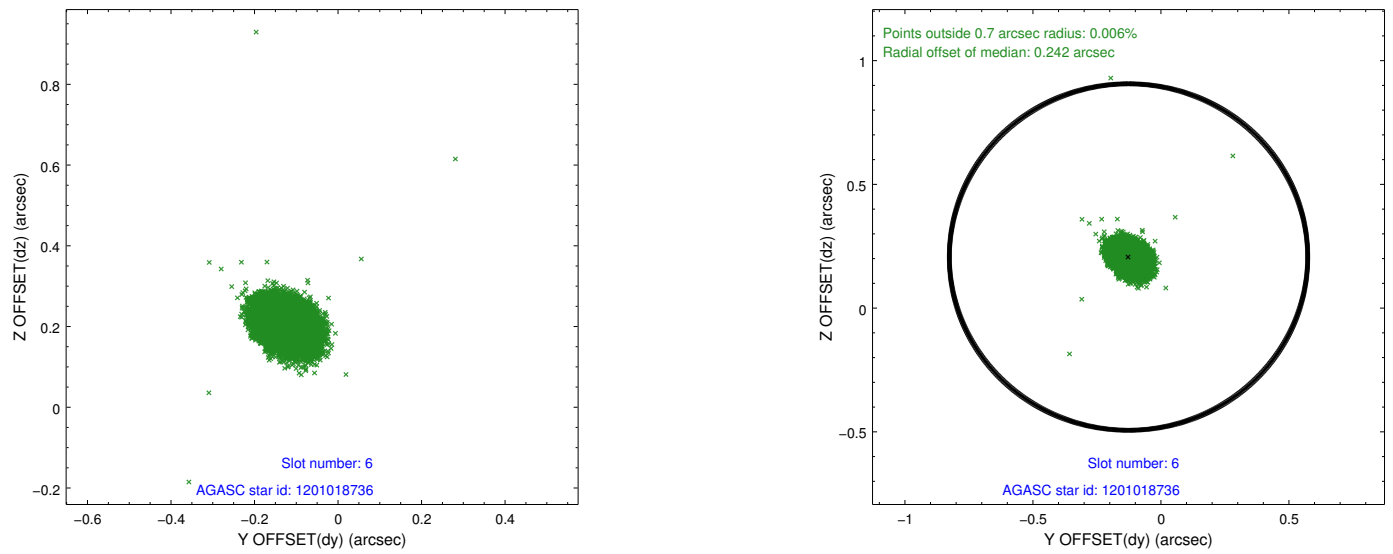
2.4.2 Slot 4



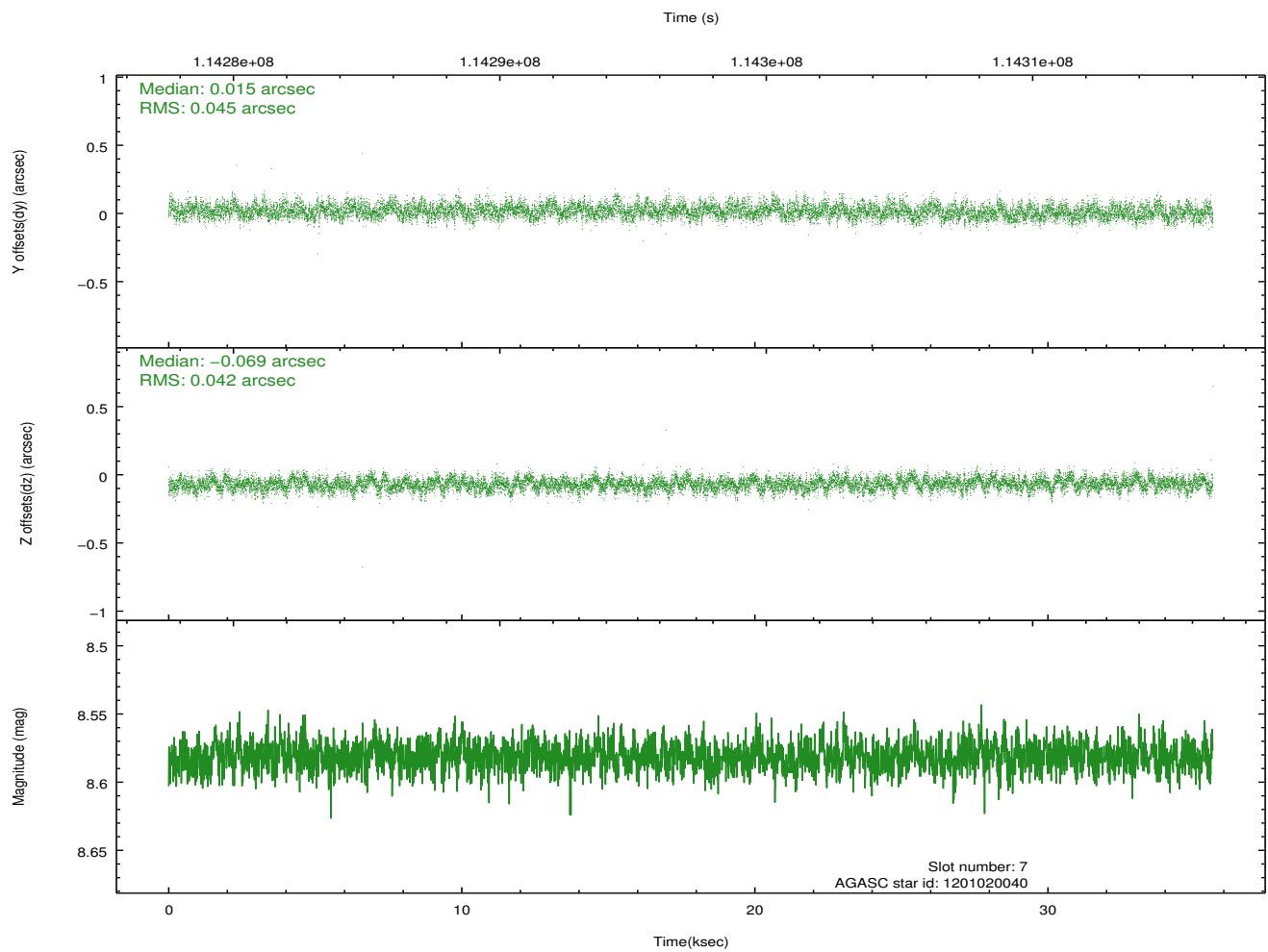
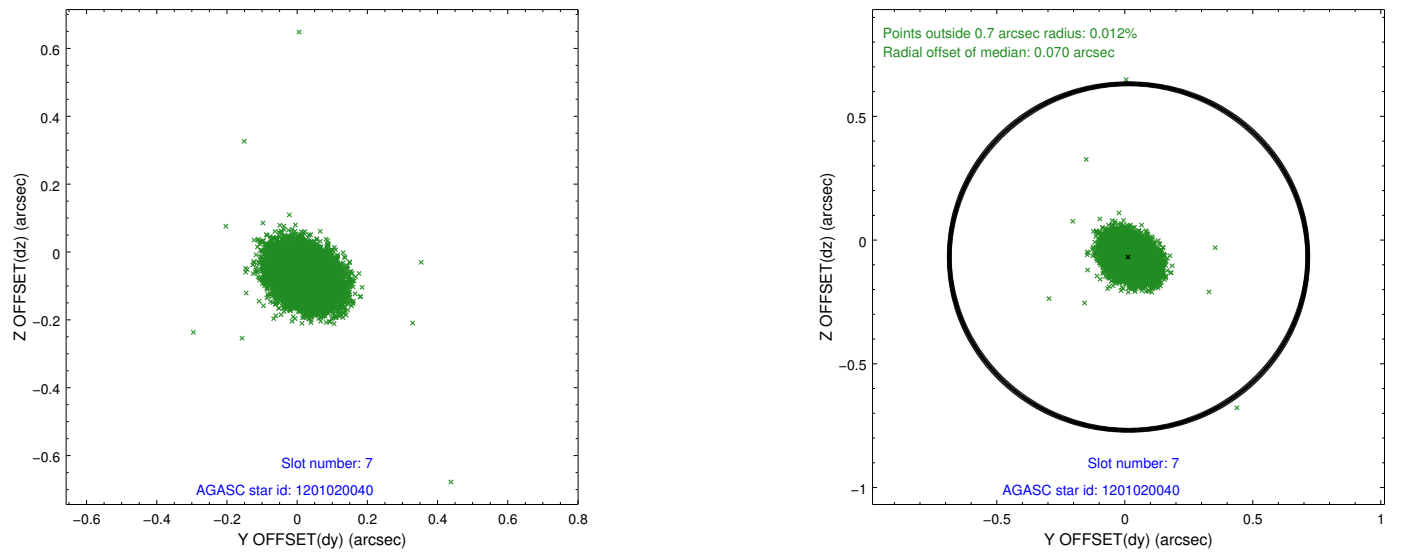
2.4.3 Slot 5



2.4.4 Slot 6

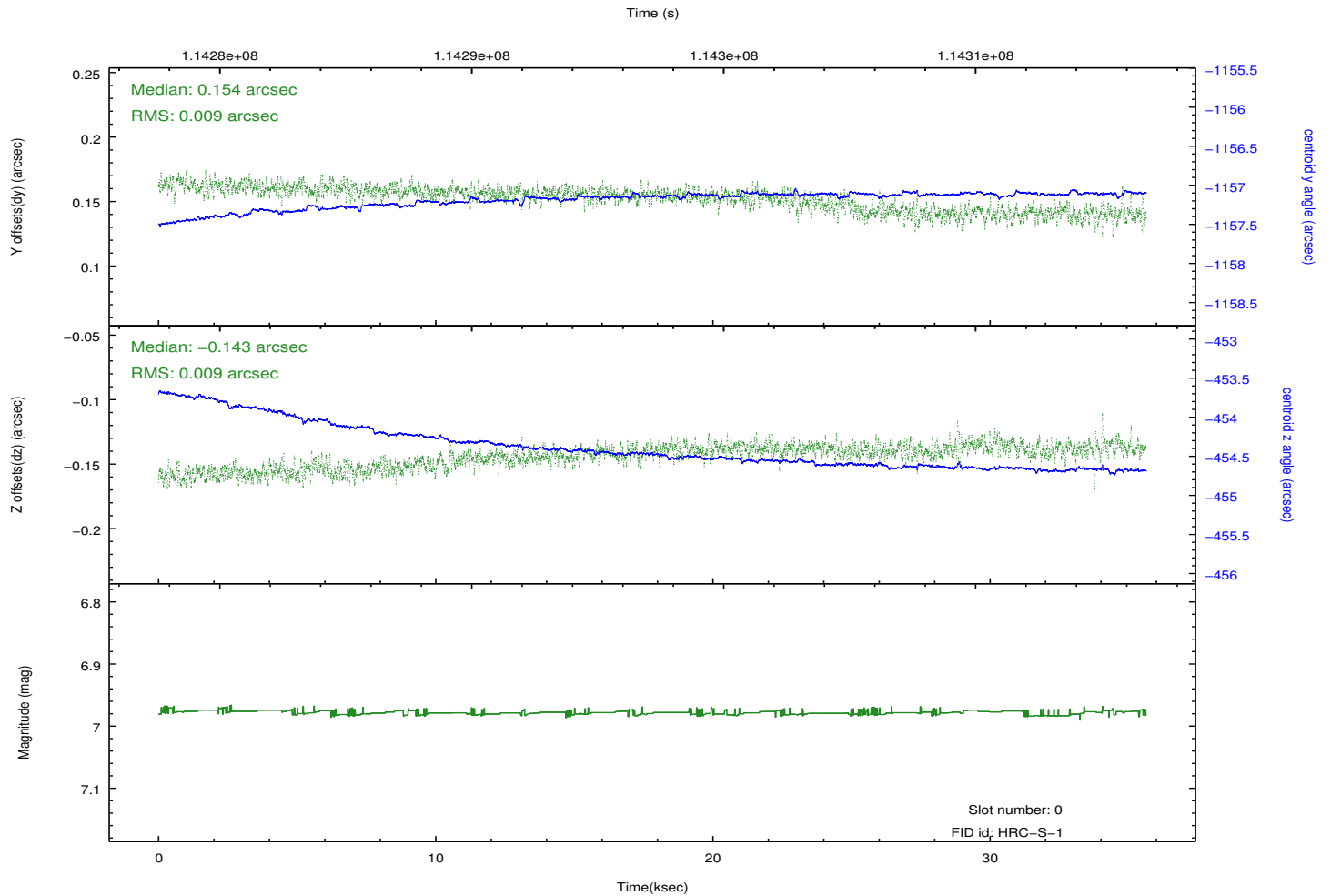
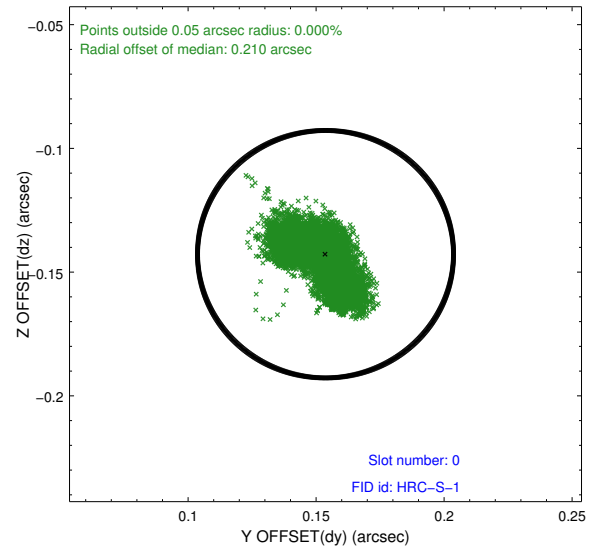
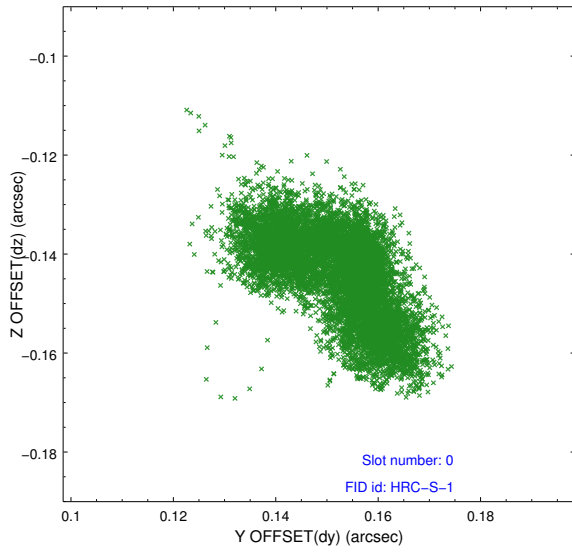


2.4.5 Slot 7

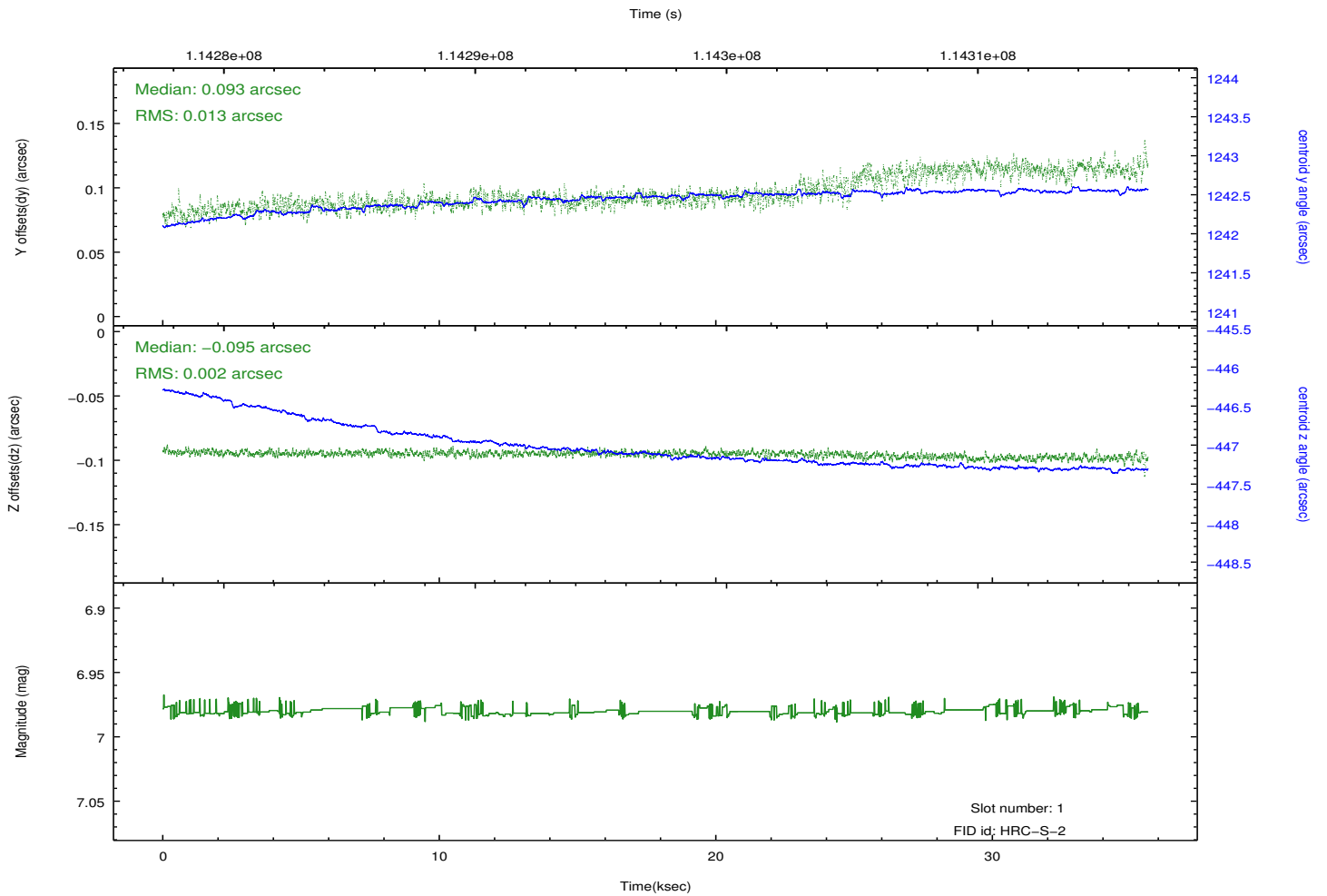
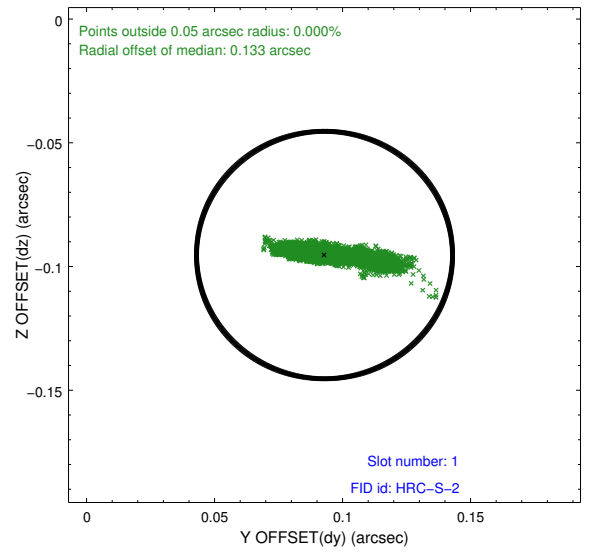
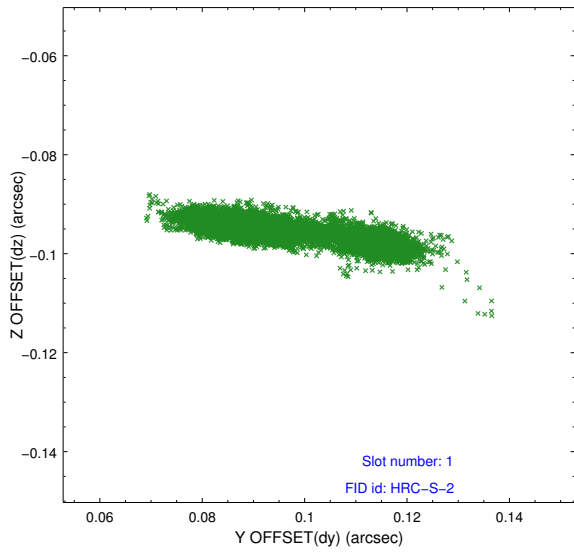


2.5 FID Slots

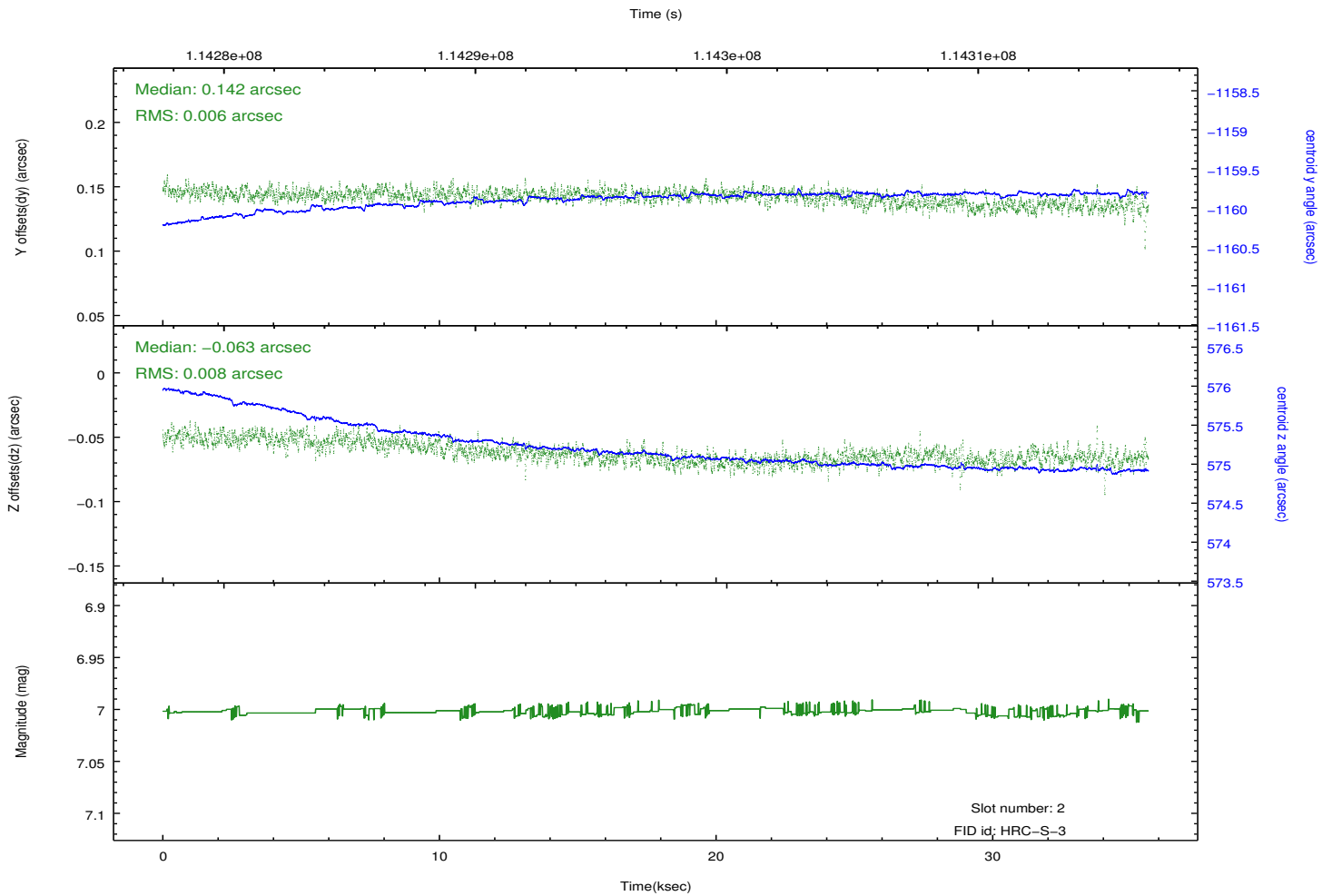
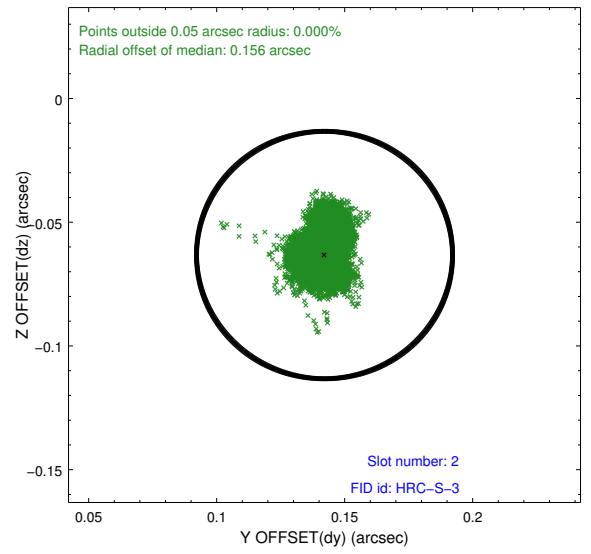
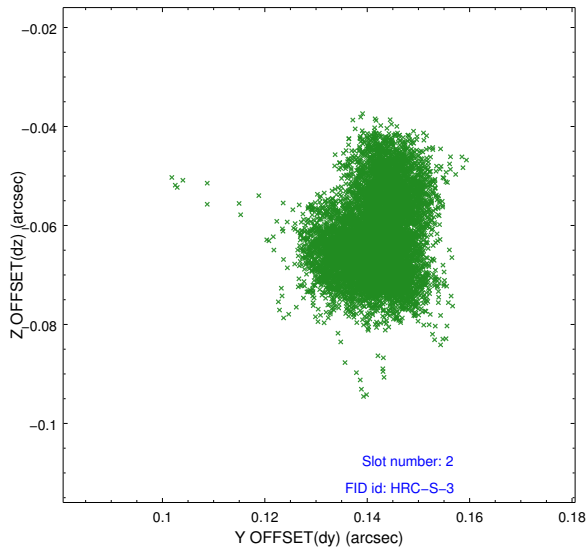
2.5.1 Slot 0



2.5.2 Slot 1

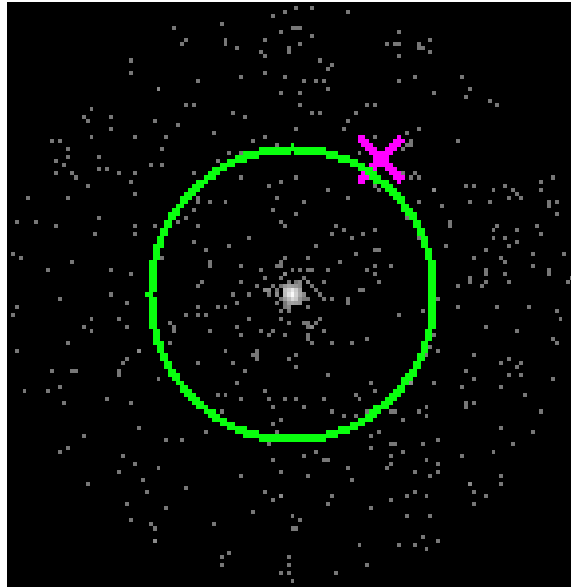


2.5.3 Slot 2

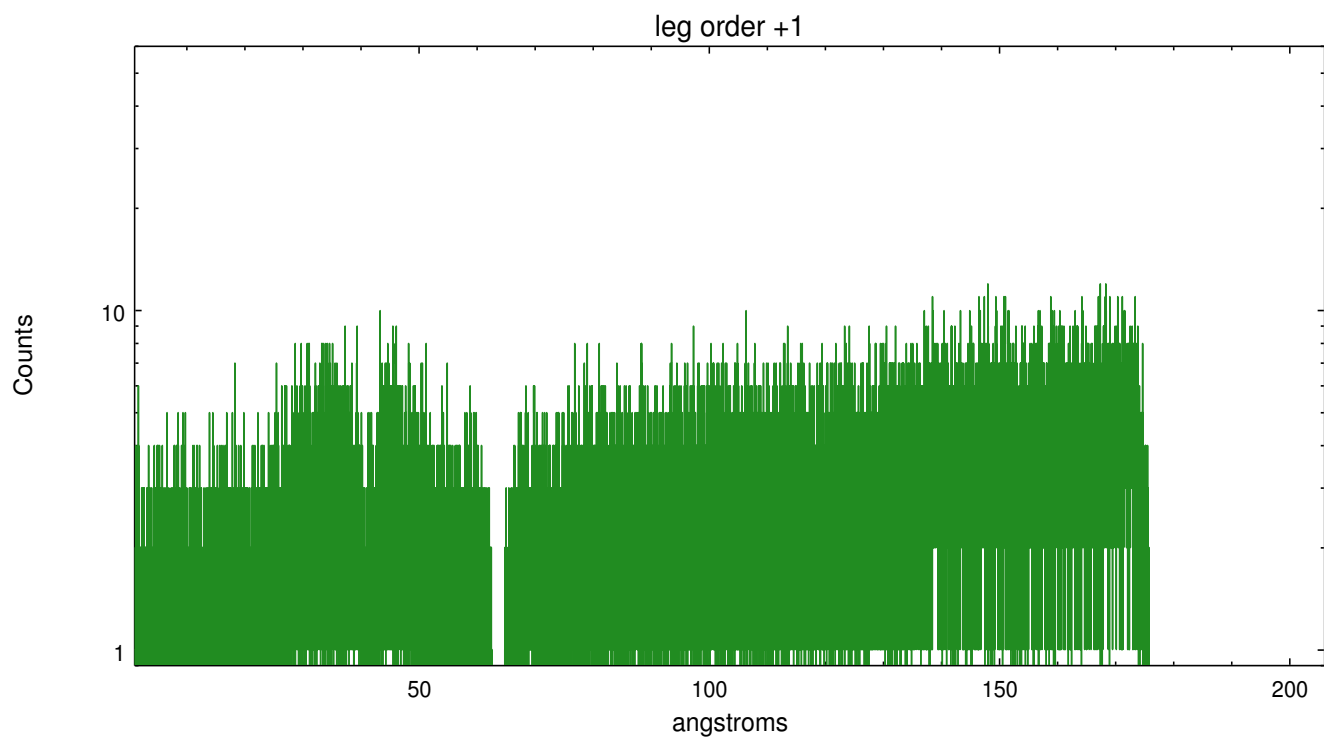
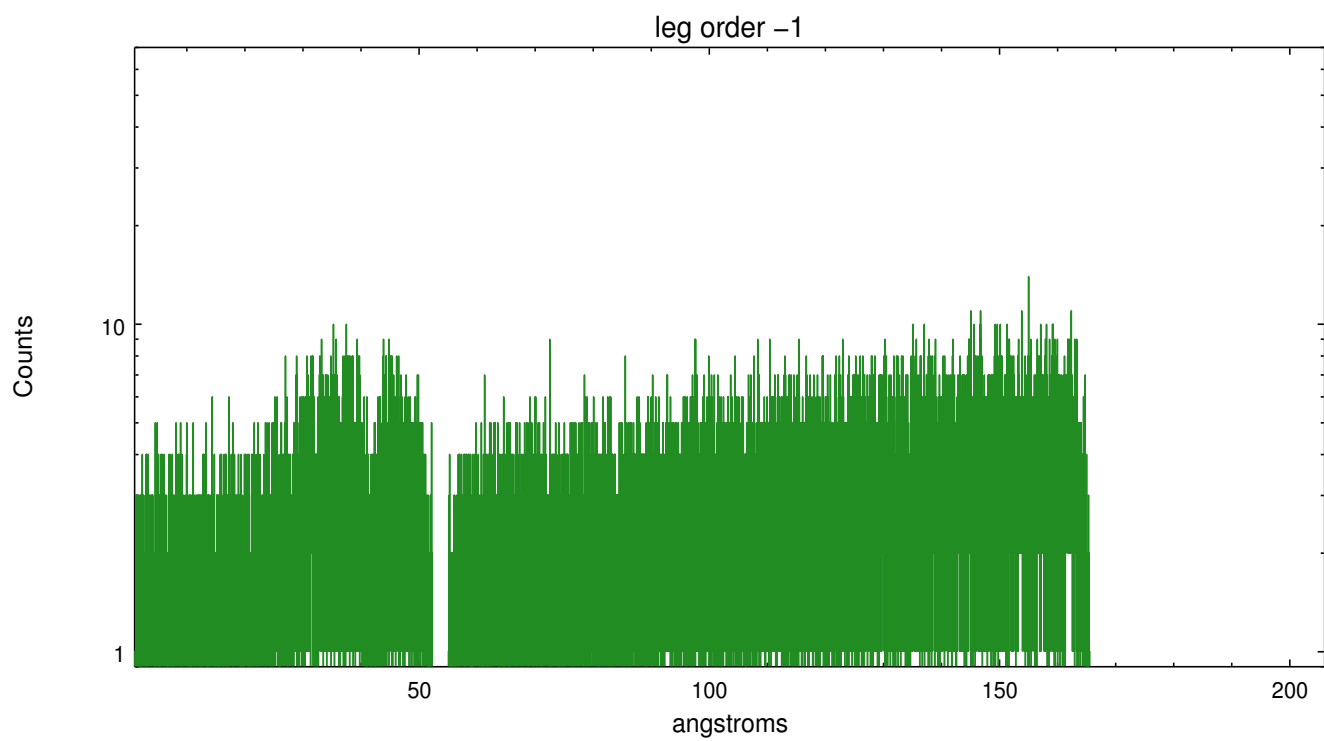


3 Gratings

3.1 LETG Arm



LETG Zero Order



A Summary

A.1 Status

V&V Scientist	Joy Nichols
V&V Date (YYYY-MM-DD)	2013.01.24
V&V Edition	1
V&V Disposition and Status	OK
V&V Charge Time	35.422

A.2 Comments

This is a multi-obi observation. Obsid 1900 has 2 obi's. This is obi=0. It was truncated by a radiation safing of the instrument, but there is some science data. Obi=2 is not included in this processing because it was terminated by a radiation safing while still in the maneuver to the target. There is no science data in obi=1.

===== The last 1.3-1.4 ksec of this observation is severely affected by the high radiation environment. The total count rate is extremely high and the DTF reflects the radiation environment.