

V&V Reference Report

L2 ASCDS Version : 8.4.5

Observation 1970 - L2 Version 3
Chandra X-Ray Center

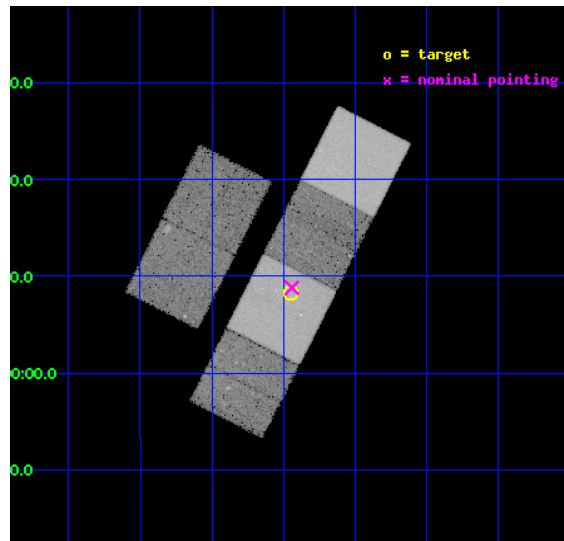
L2 Processing Date : Sep 20 2012

Contents

1	Front	2
2	OBI	3
2.1	OBI	3
2.1.1	Images	3
2.1.2	Bias	3
2.1.3	Parameters	4
2.1.4	Events	4
2.2	Compared Parameters	5
2.3	Aspect	6
2.4	Star Slots	9
2.4.1	Slot 3	9
2.4.2	Slot 4	10
2.4.3	Slot 5	11
2.4.4	Slot 6	12
2.4.5	Slot 7	13
2.5	FID Slots	14
2.5.1	Slot 0	14
2.5.2	Slot 1	15
2.5.3	Slot 2	16
A	Summary	17
A.1	Status	17
A.2	Comments	17

1 Front

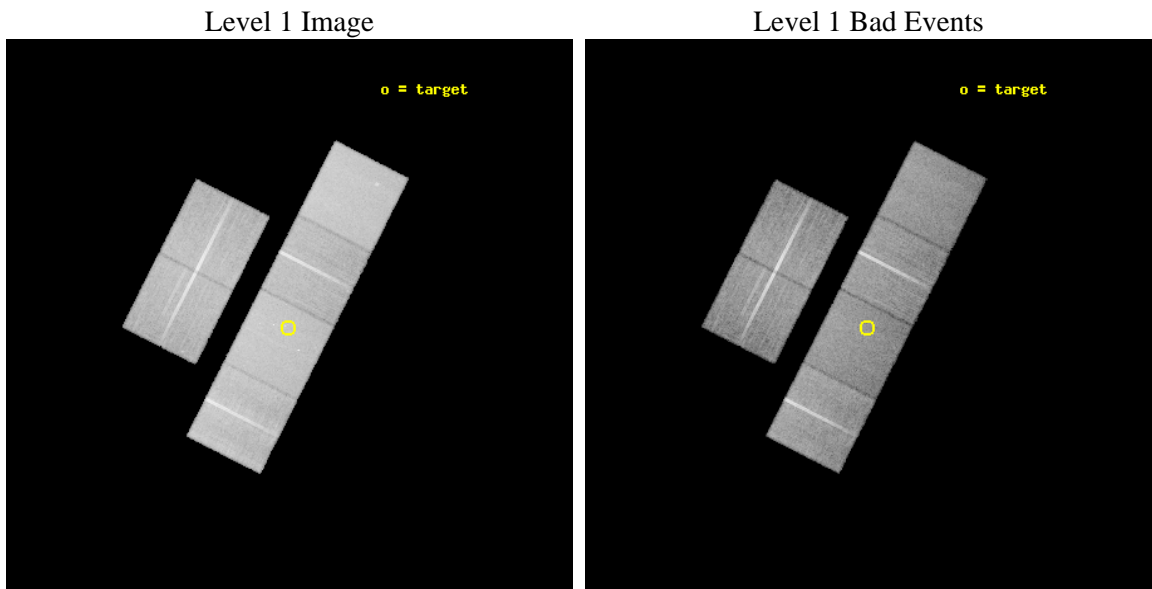
seq_num	500147	Sequence number
obs_id	1970	Observation id
title	CONTINUING CHANDRA OBSERVATIONS OF THE X-RAY SUPERNOVAE SN 1999EM AND SN 1998S	Proposal title
observer	Prof. Walter Lewin	Principal investigator
object	SN 1999EM	Source name
dtcycle	0	
cycle	P	events from which exps? Prim/Second/Both
ra_targ	70.362917	Observer's specified target RA [deg]
dec_targ	-2.862694	Observer's specified target Dec [deg]
ra_nom	70.360101307644	Nominal RA [deg]
dec_nom	-2.8533434442349	Nominal Dec [deg]
roll_nom	116.93927784834	Nominal Roll [deg]
revision	3	Processing version of data
ontime	30166.40002808	Sum of GTIs [s]
livetime	29784.414906899	Livetime [s]
ontime2	30163.159067824	Sum of GTIs [s]
ontime3	30166.40002808	Sum of GTIs [s]
ontime5	30166.40002808	Sum of GTIs [s]
ontime6	30166.40002808	Sum of GTIs [s]
ontime7	30166.40002808	Sum of GTIs [s]
ontime8	30166.40002808	Sum of GTIs [s]
l2events	317809	Number of level 2 events



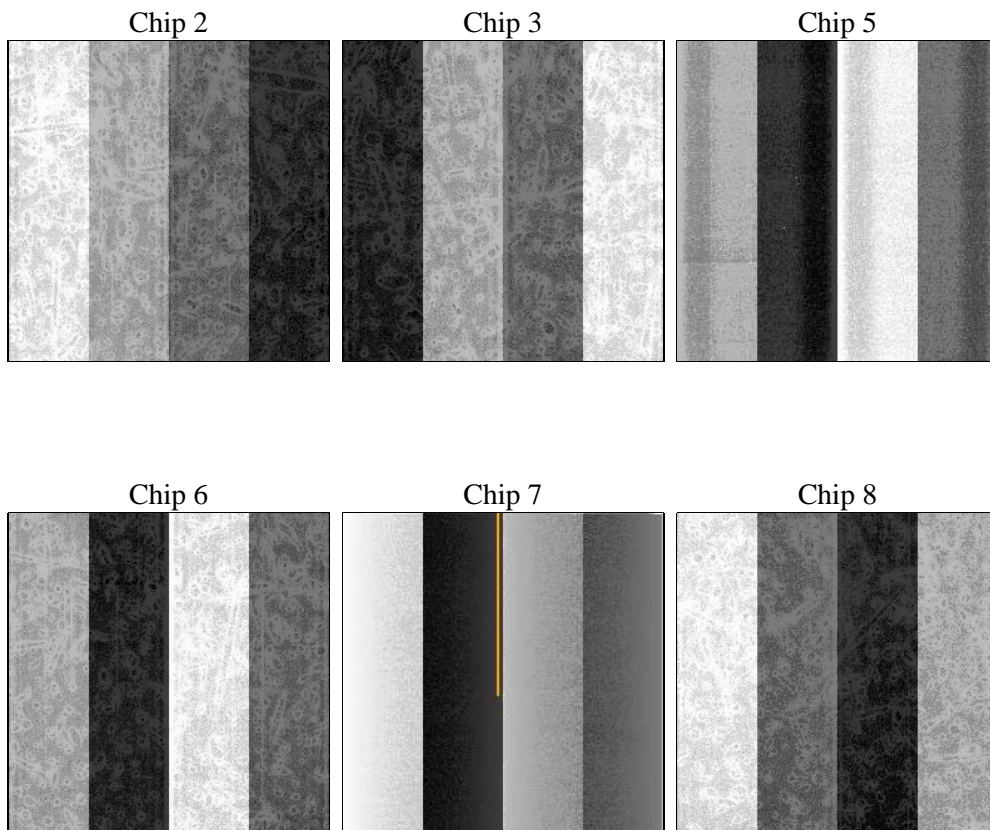
2 OBI

2.1 OBI

2.1.1 Images



2.1.2 Bias



2.1.3 Parameters

obi_num	0	Obi number	sched_exp_time	30000.000000	[s] Scheduled observation exposure time
ascdsver	8.4.5	Processing system revision	ontime	30166.40002808	Sum of GTIs [s]
caldbver	4.5.1.1	 	ontime2	30163.159067824	Sum of GTIs [s]
date	2012-09-20T21:44:22	Date and time of file creation	ontime3	30166.40002808	Sum of GTIs [s]
revision	3	Processing version of data	ontime5	30166.40002808	Sum of GTIs [s]
			ontime6	30166.40002808	Sum of GTIs [s]
			ontime7	30166.40002808	Sum of GTIs [s]
			ontime8	30166.40002808	Sum of GTIs [s]
			l1events	1425786	Number of level 1 events

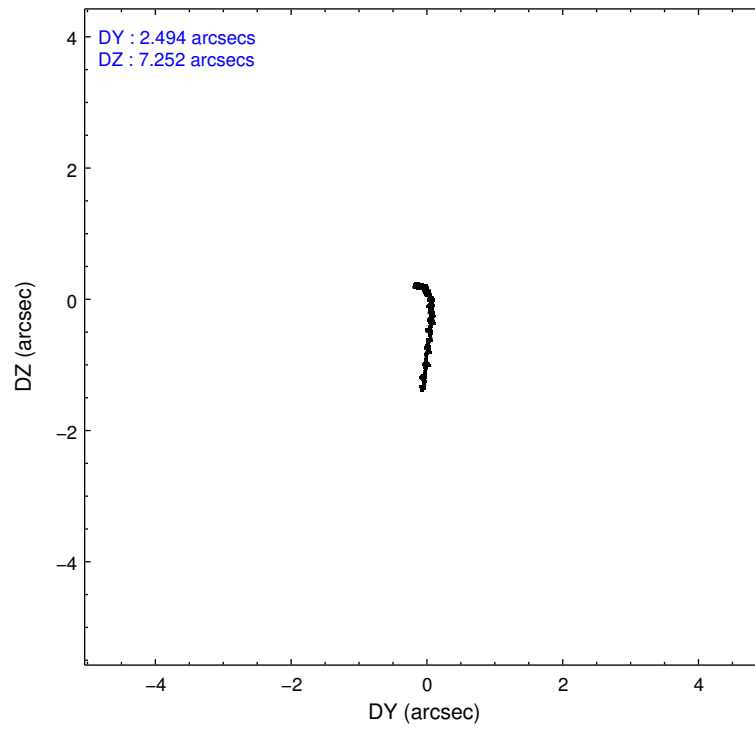
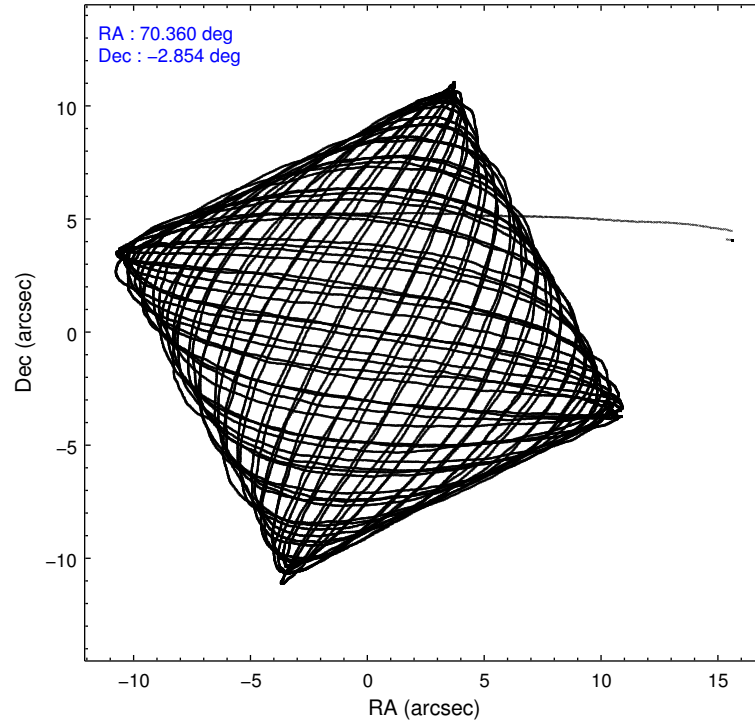
2.1.4 Events

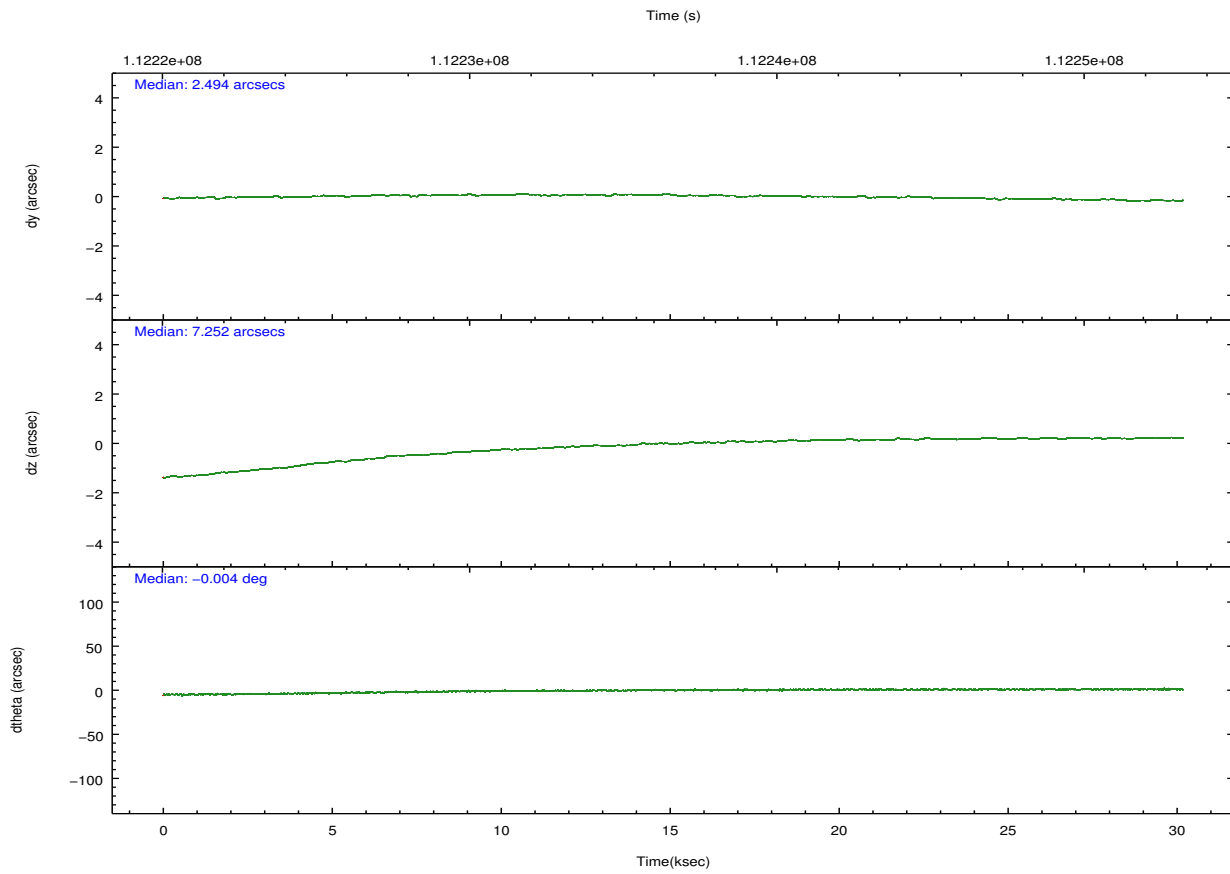
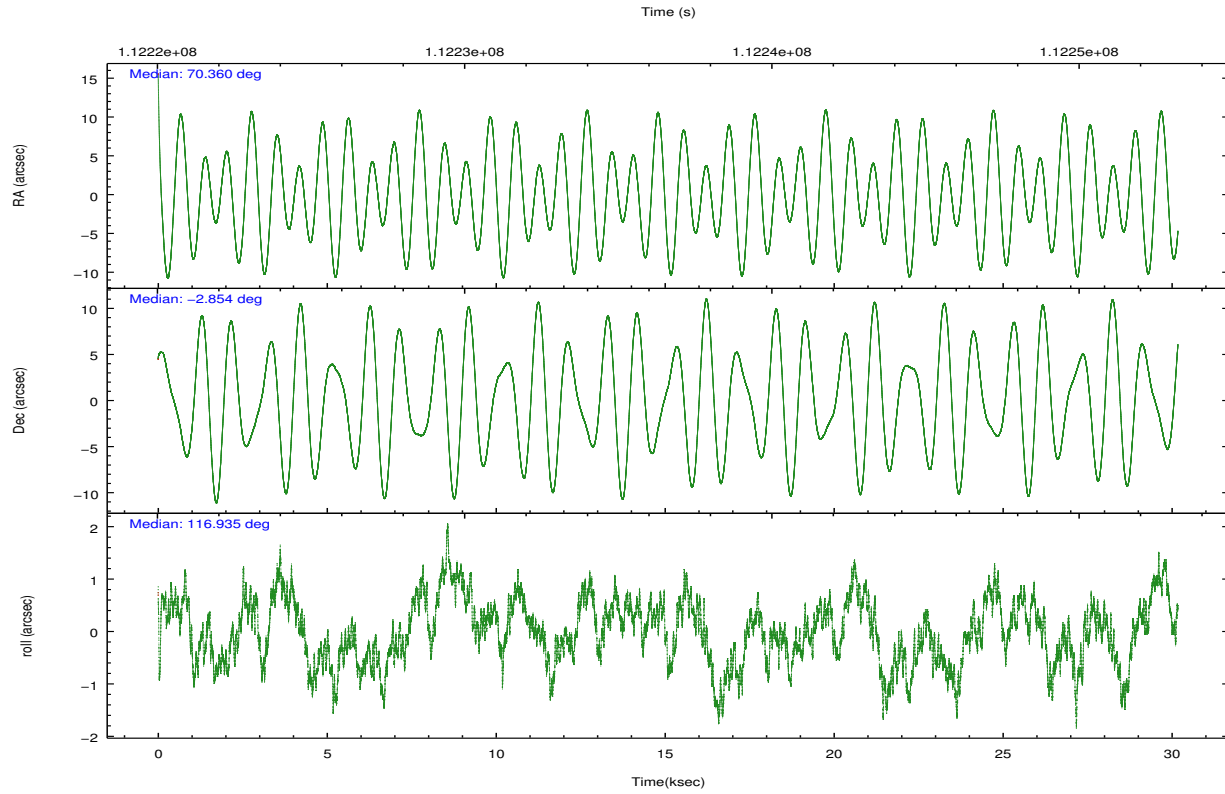
	ccd 2	ccd 3	ccd 5	ccd 6	ccd 7	ccd 8		ccd 2	ccd 3	ccd 5	ccd 6	ccd 7	ccd 8
level 1 events	211749	201610	285728	207147	263820	255732	grade 0 events	9689	10266	10063	9878	10977	16282
rejected events	189060	178166	157102	183556	153068	204936		4%	5%	3%	4%	4%	6%
rejected %	89%	88%	54%	88%	58%	80%	grade 1 events	101	103	368	88	280	144
								0%	0%	0%	0%	0%	0%
							grade 2 events	4866	4619	38366	4636	21785	11129
								2%	2%	13%	2%	8%	4%
							grade 3 events	2163	2220	5839	2369	10169	5475
								1%	1%	2%	1%	3%	2%
							grade 4 events	2123	2261	5725	2283	9893	4992
								1%	1%	2%	1%	3%	1%
							grade 5 events	6872	7870	22098	8711	24787	10793
								3%	3%	7%	4%	9%	4%
							grade 6 events	3928	4171	69196	4526	58437	13243
								1%	2%	24%	2%	22%	5%
							grade 7 events	182007	170100	134073	174656	127492	193674
								85%	84%	46%	84%	48%	75%

2.2 Compared Parameters

Parameter	Planned	Actual	Parameter	Planned	Actual
Instrument	ACIS	ACIS	Obspar format version number	7	7
Detector	ACIS-235678	ACIS-235678	Obspar file type	PREDICTED	ACTUAL
Grating	NONE	NONE	Obspar update status	NONE	UPDATED
Data mode	FAINT	FAINT	Number of optional ACIS chips dropped	0	0
Observation mode	POINTING	POINTING	On-chip summing requested	N	N
[deg] Pointing RA	70.383165	70.36010130764386	Subarray requested	NONE	NONE
[deg] Pointing Dec	-2.867986	-2.853343444234873	Alternating exposures requested	N	N
[deg] Pointing Roll	116.783803	116.9392778483424	[s] Primary exposure time	0.000000	3.2
[mm] SIM focus pos	-0.684267	-0.6828225247311905			
[mm] SIM defocus	0	0.001444936568705701			
[mm] SIM translation stage pos	-190.132523	-190.1400660498719			
[mm] SIM translation stage offset	0	0.00754346686406393			
[s] Observation start time (MET)	112221704.184000	112220573.0055			
Observation start date	2001-07-22T20:40:40	2001-07-22T20:22:53			
[s] Observation end time (MET)	112251704.184000	112252211.16924			
Observation end date	2001-07-23T05:00:40	2001-07-23T05:10:11			
Read mode	TIMED	TIMED			

2.3 Aspect





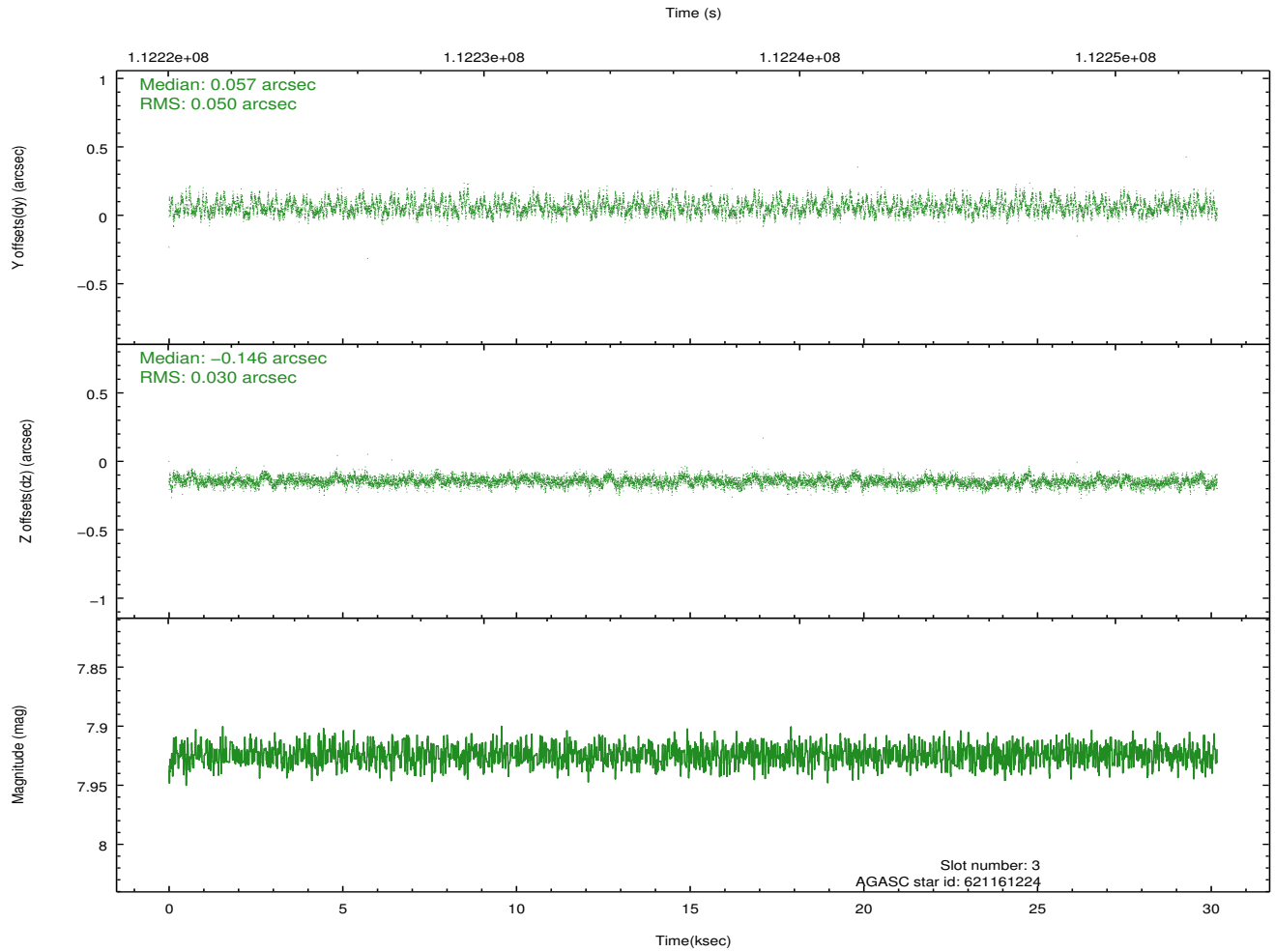
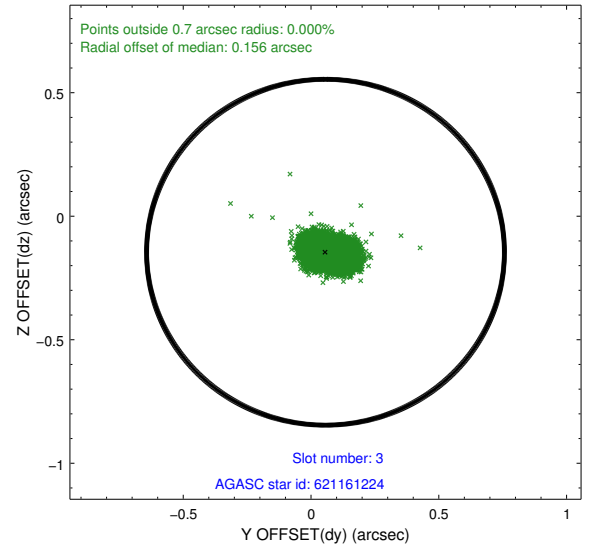
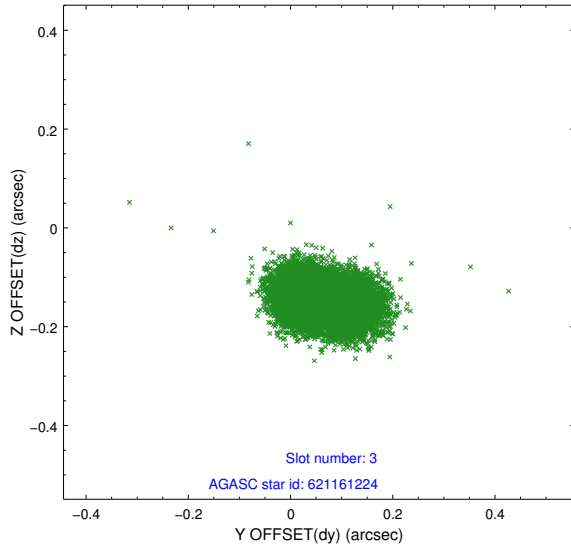
Slot Statistics

slot	status	id	mag	n_pts	med_dy	med_dz	dr1	dr2	ra	dec	mean_y	mean_z
0	FID	ACIS-S-2	7.11	7359	-0.013	-0.002	0.010	0.023	0.000000	0.000000	-755.12	-1728.22
1	FID	ACIS-S-4	7.19	7358	-0.048	0.007	0.010	0.018	0.000000	0.000000	2158.09	180.22
2	FID	ACIS-S-5	7.24	7358	0.032	0.004	0.010	0.018	0.000000	0.000000	-1807.83	173.94
3	GUIDE	621161224	7.92	14716	0.057	-0.146	0.061	0.101	70.234546	-3.517454	-1845.89	1530.48
4	GUIDE	621159792	7.79	14717	0.066	0.068	0.063	0.099	71.027177	-3.166580	-2002.52	-1581.52
5	GUIDE	621154624	8.98	14714	-0.161	0.116	0.065	0.105	70.402746	-2.451192	1308.34	-738.55
6	GUIDE	621154496	8.62	14716	-0.042	0.098	0.060	0.098	70.732100	-2.663664	91.97	-1451.17
7	GUIDE	621151192	9.91	14706	0.076	-0.136	0.125	0.194	70.235475	-2.692308	804.73	189.34

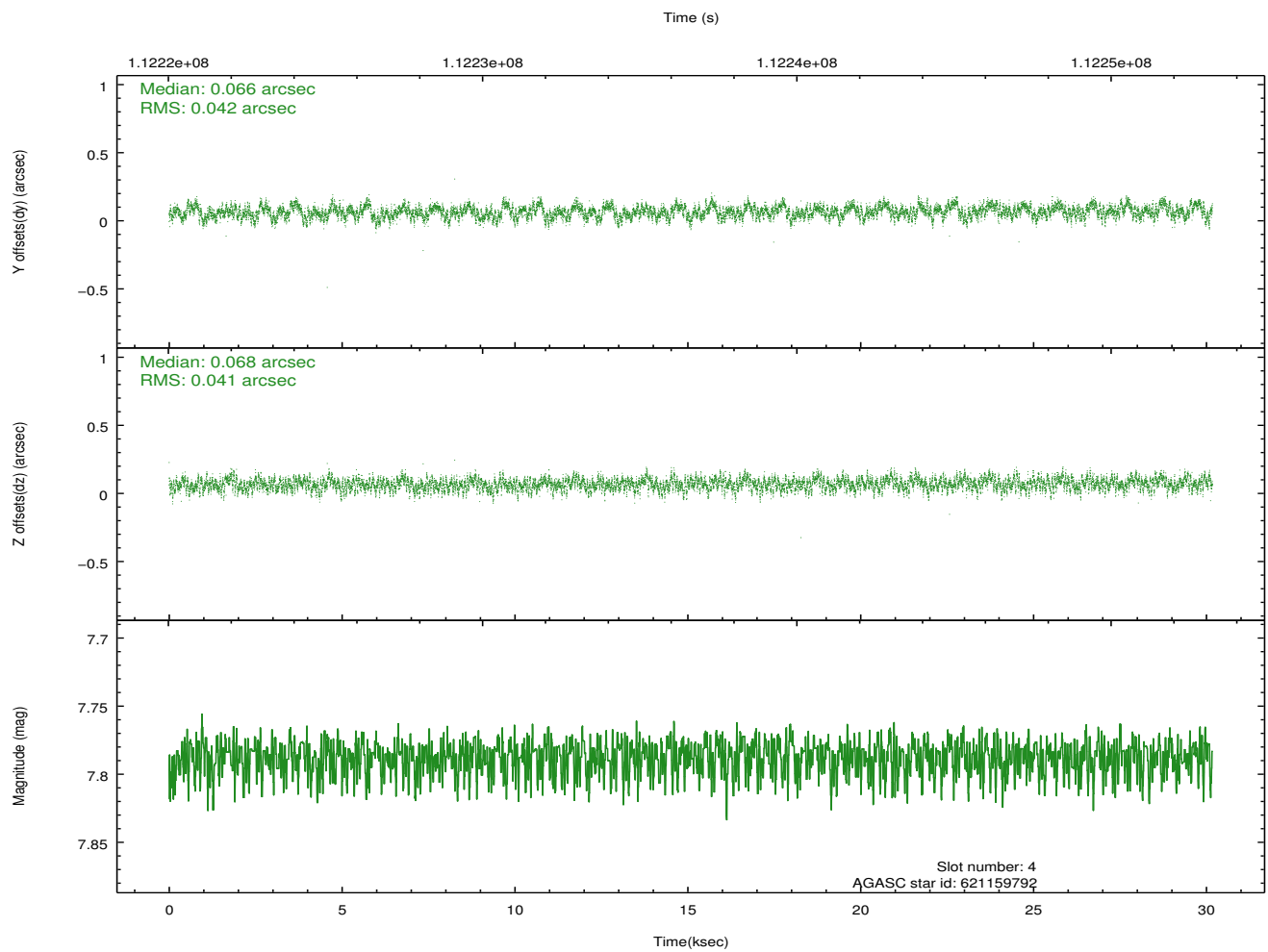
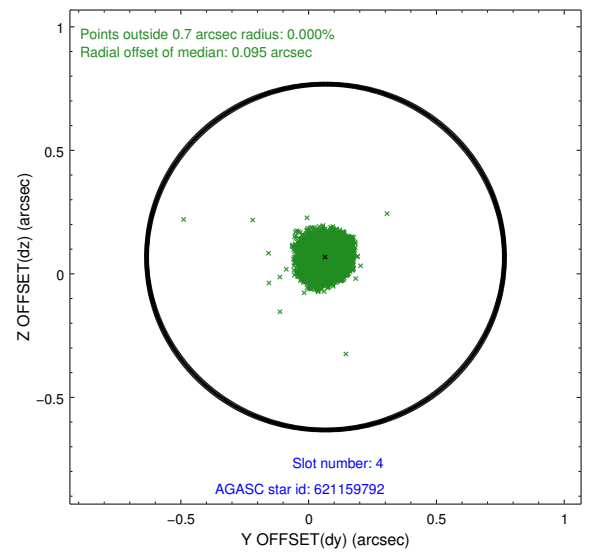
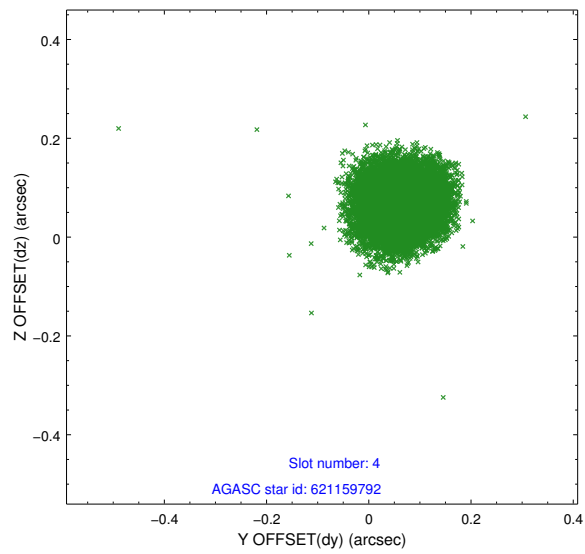
∞

2.4 Star Slots

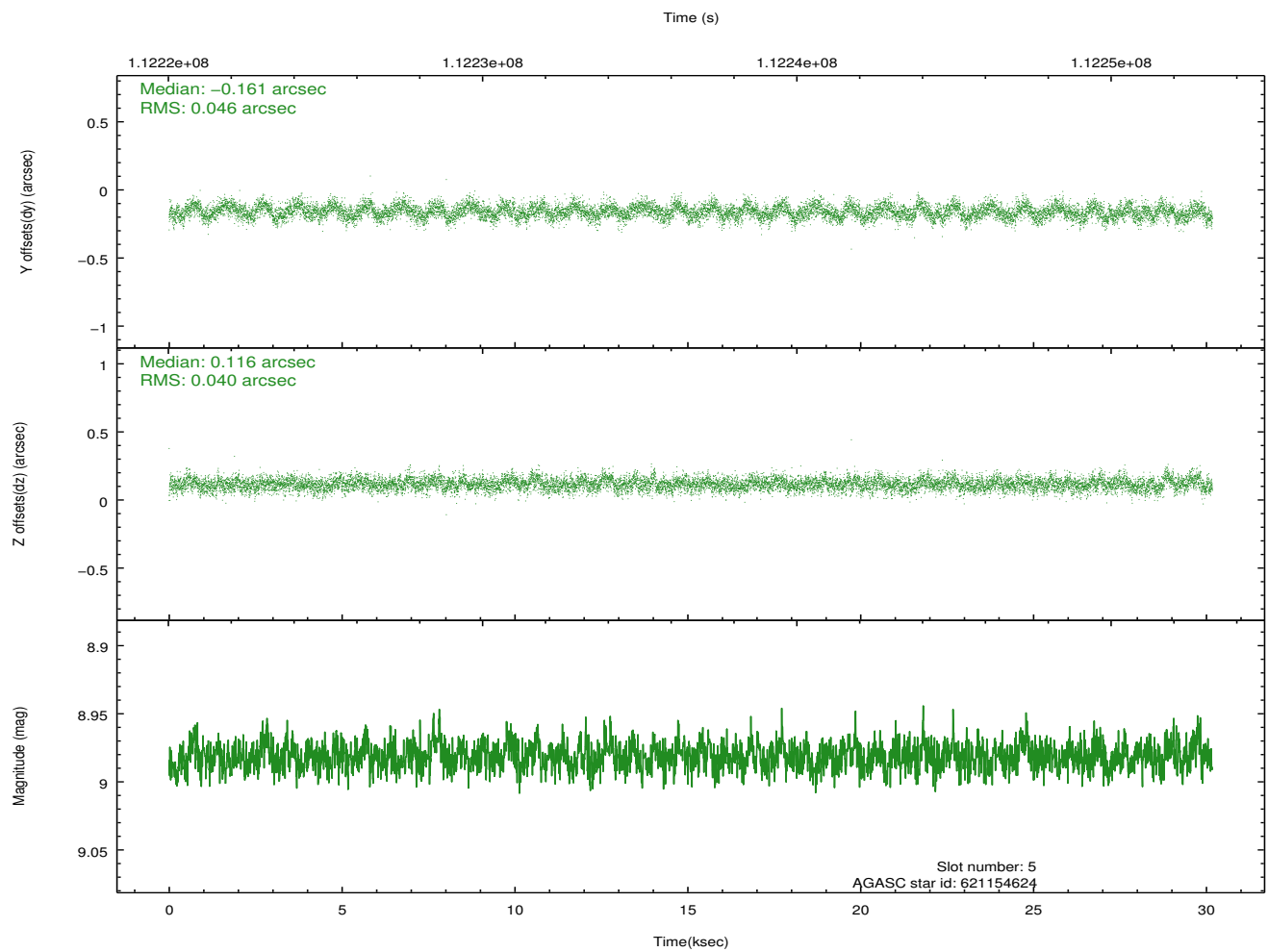
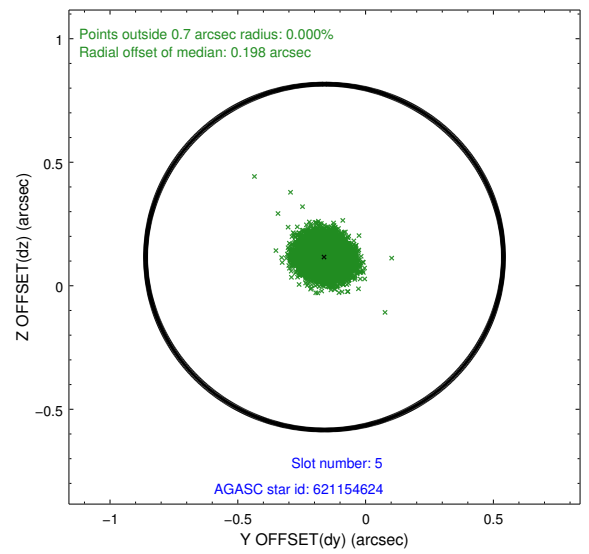
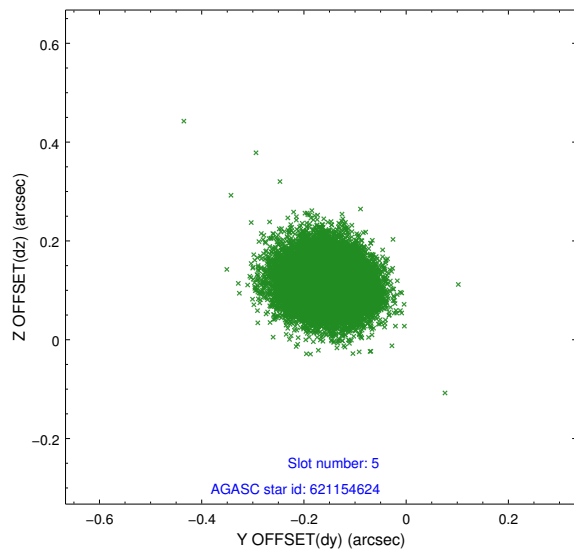
2.4.1 Slot 3



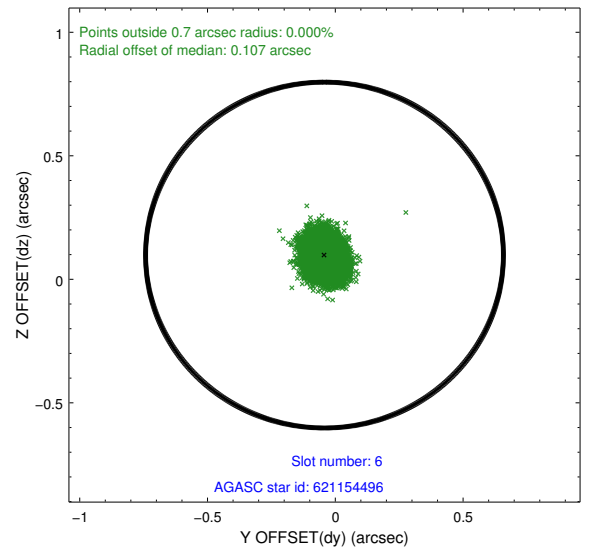
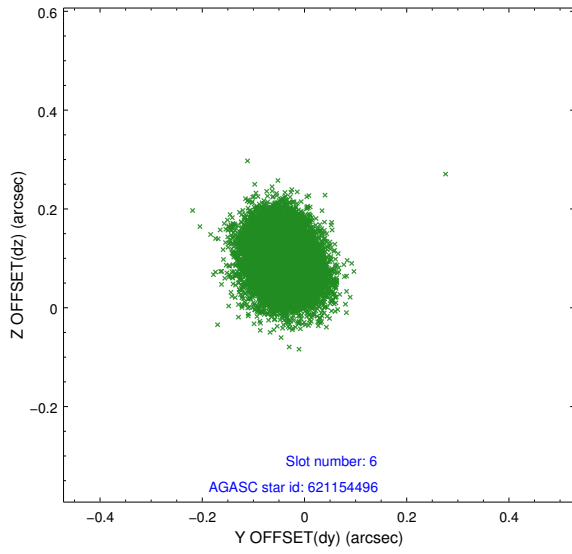
2.4.2 Slot 4



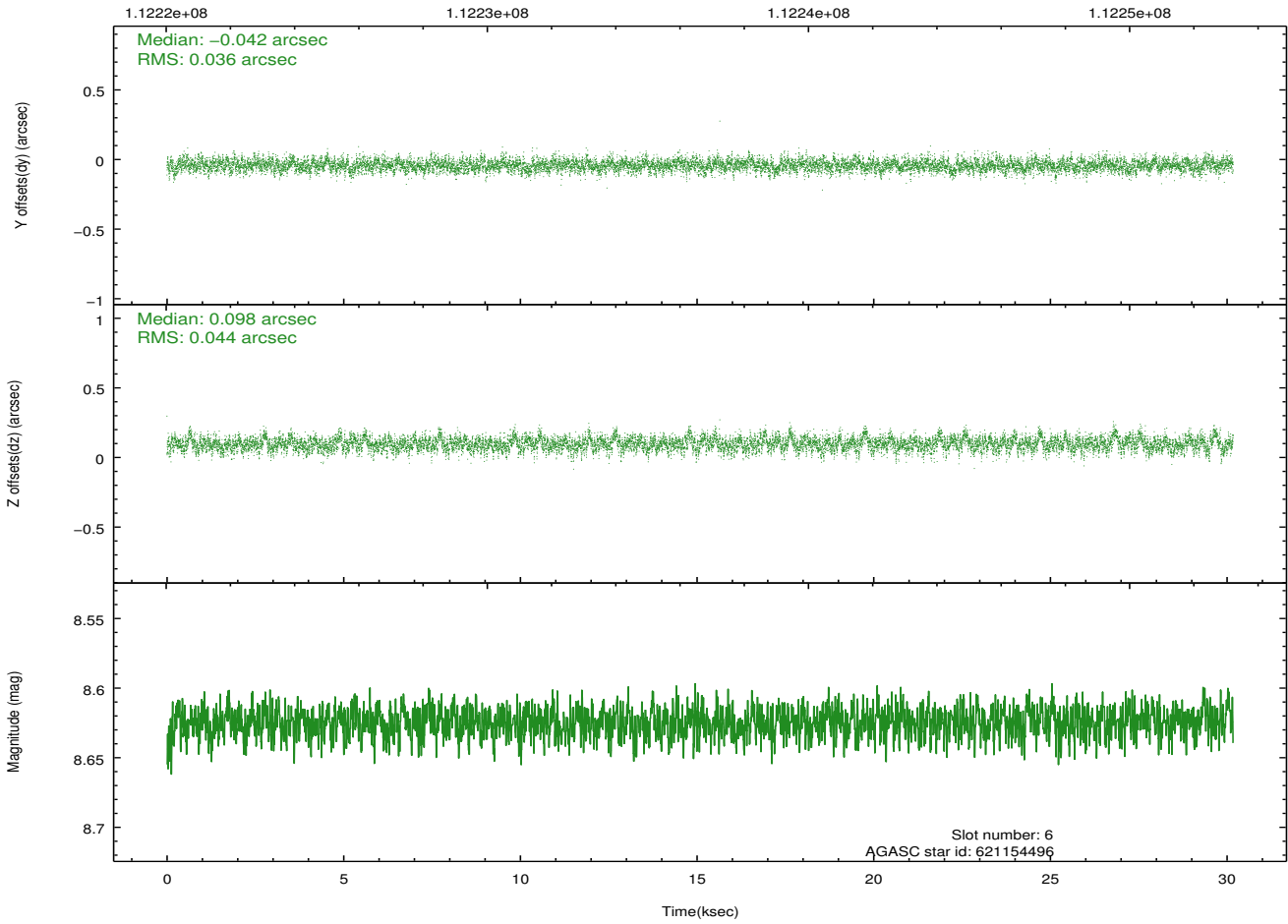
2.4.3 Slot 5



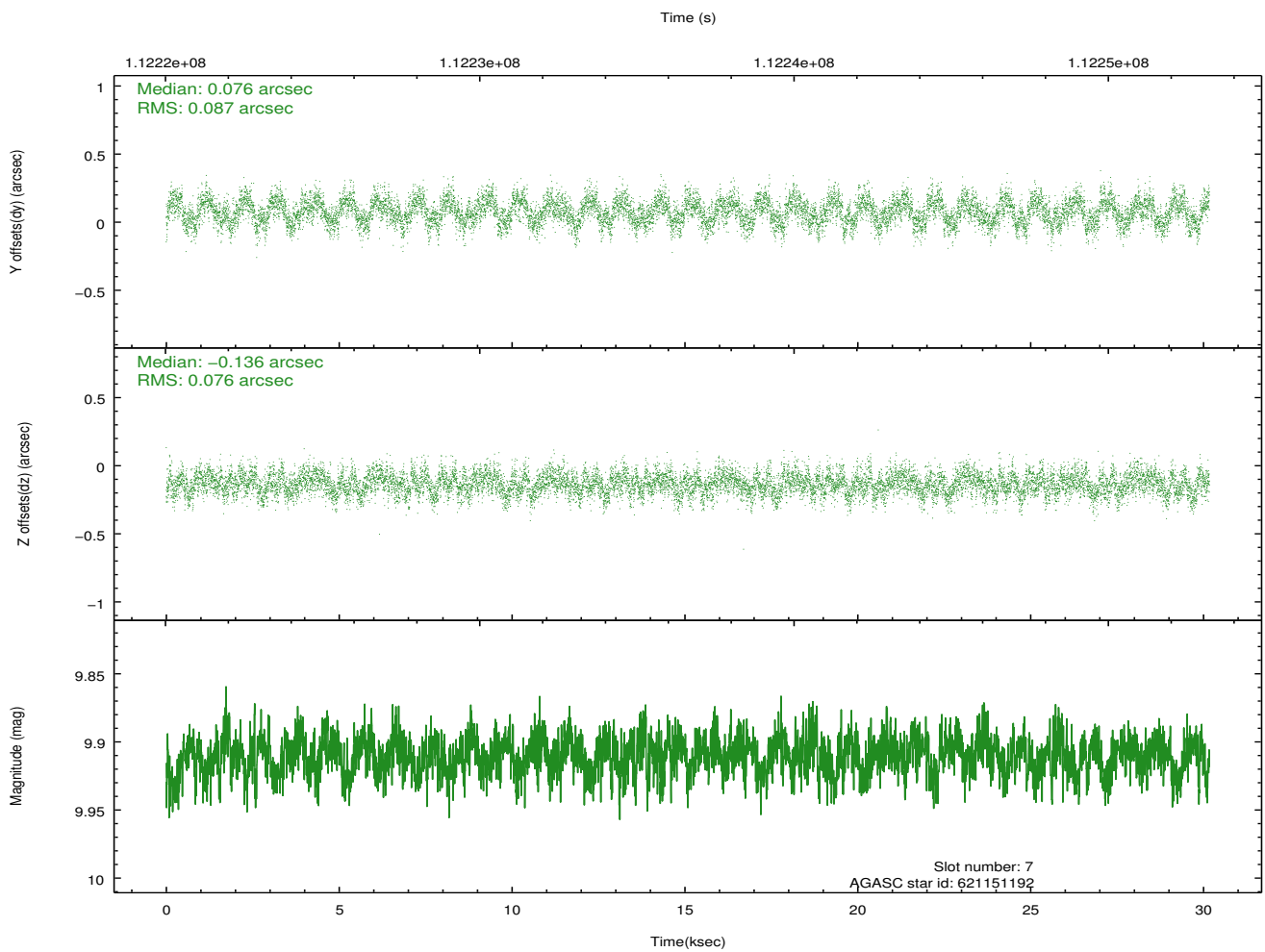
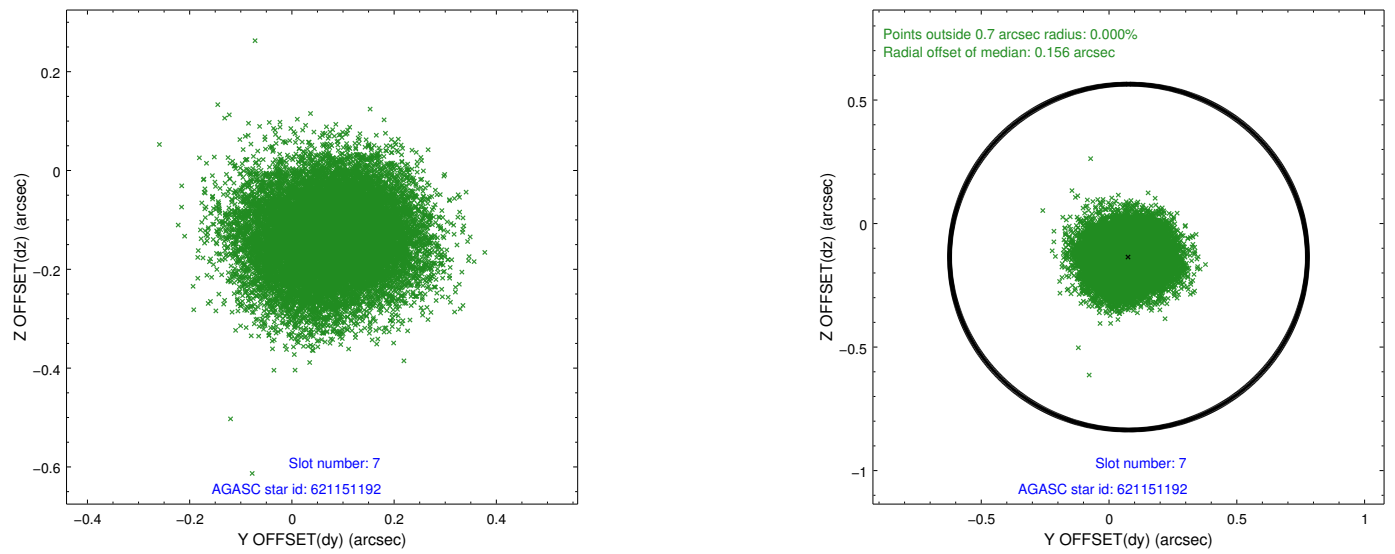
2.4.4 Slot 6



Time (s)

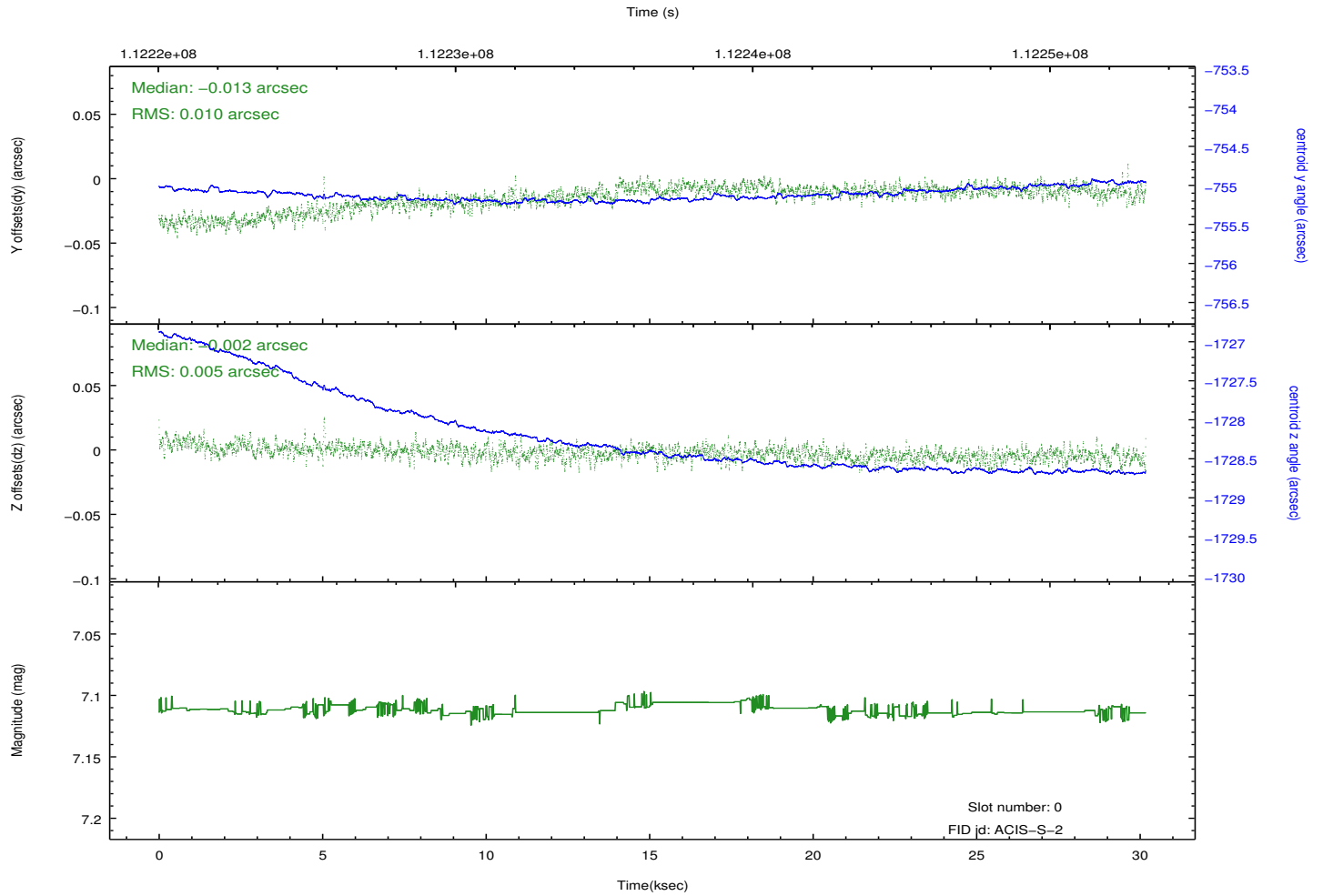
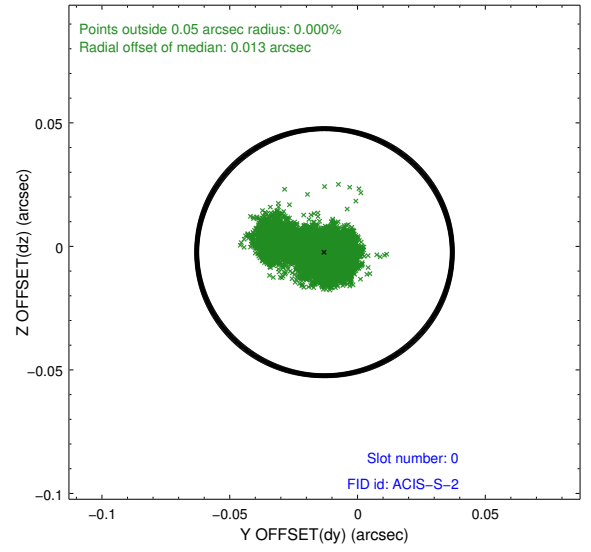
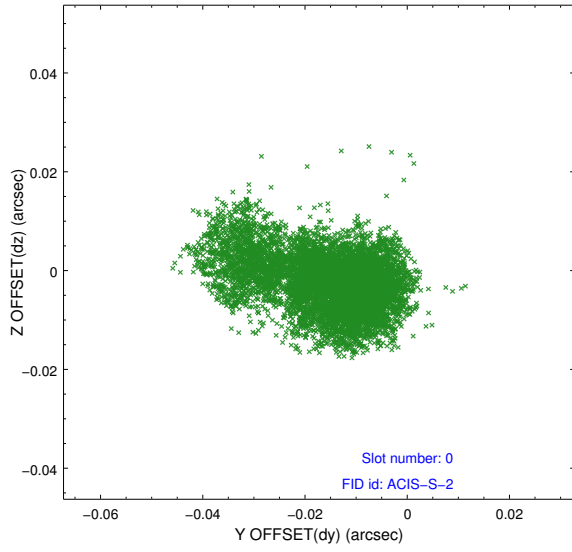


2.4.5 Slot 7

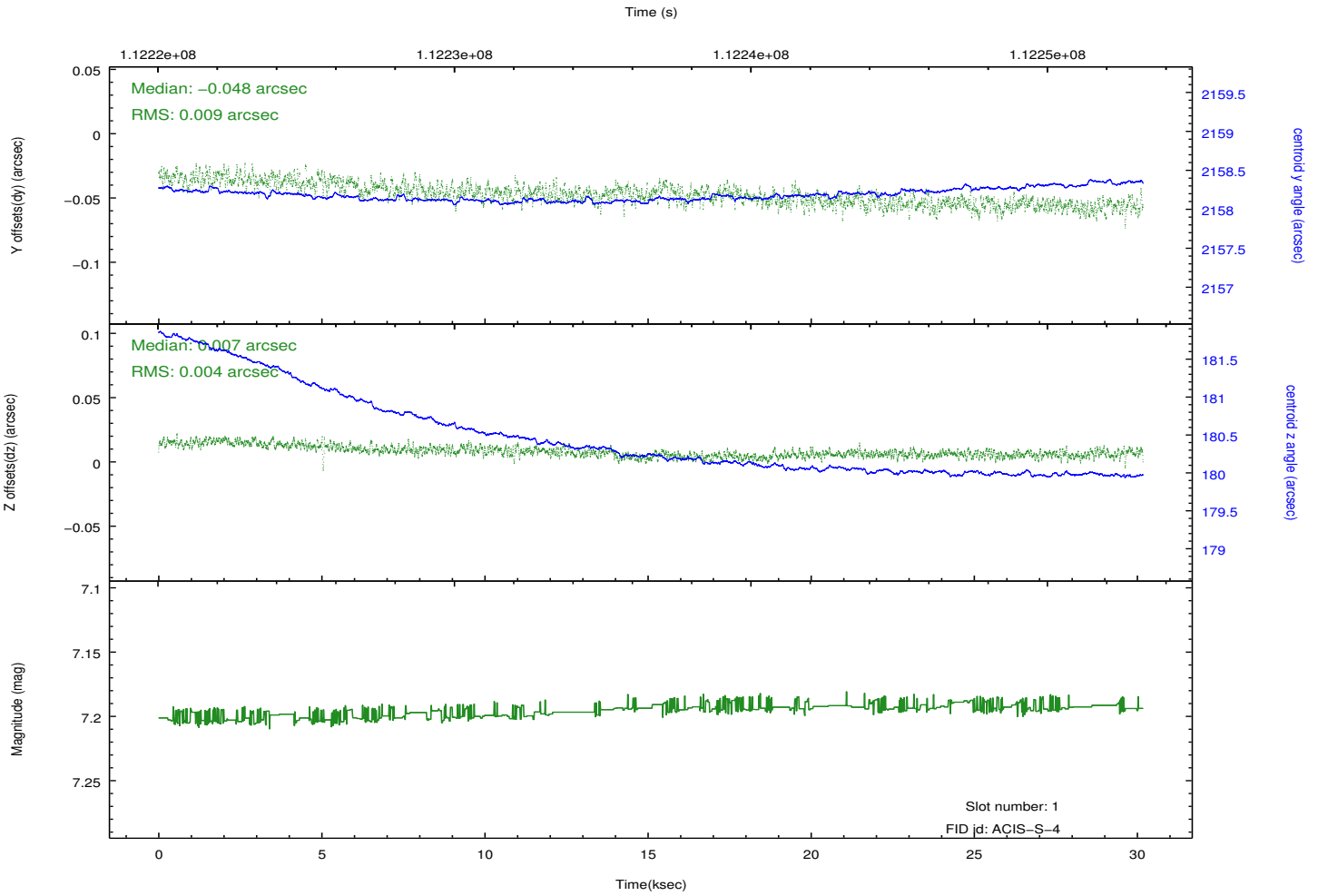
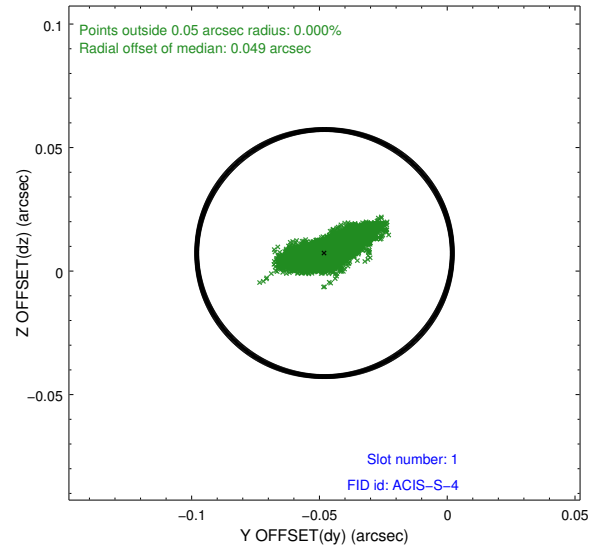
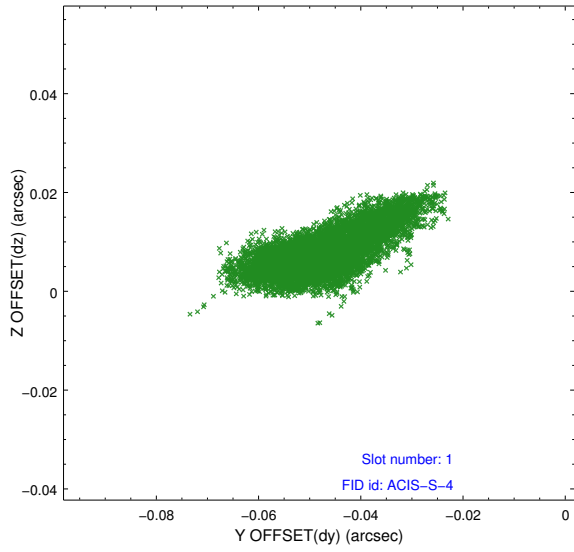


2.5 FID Slots

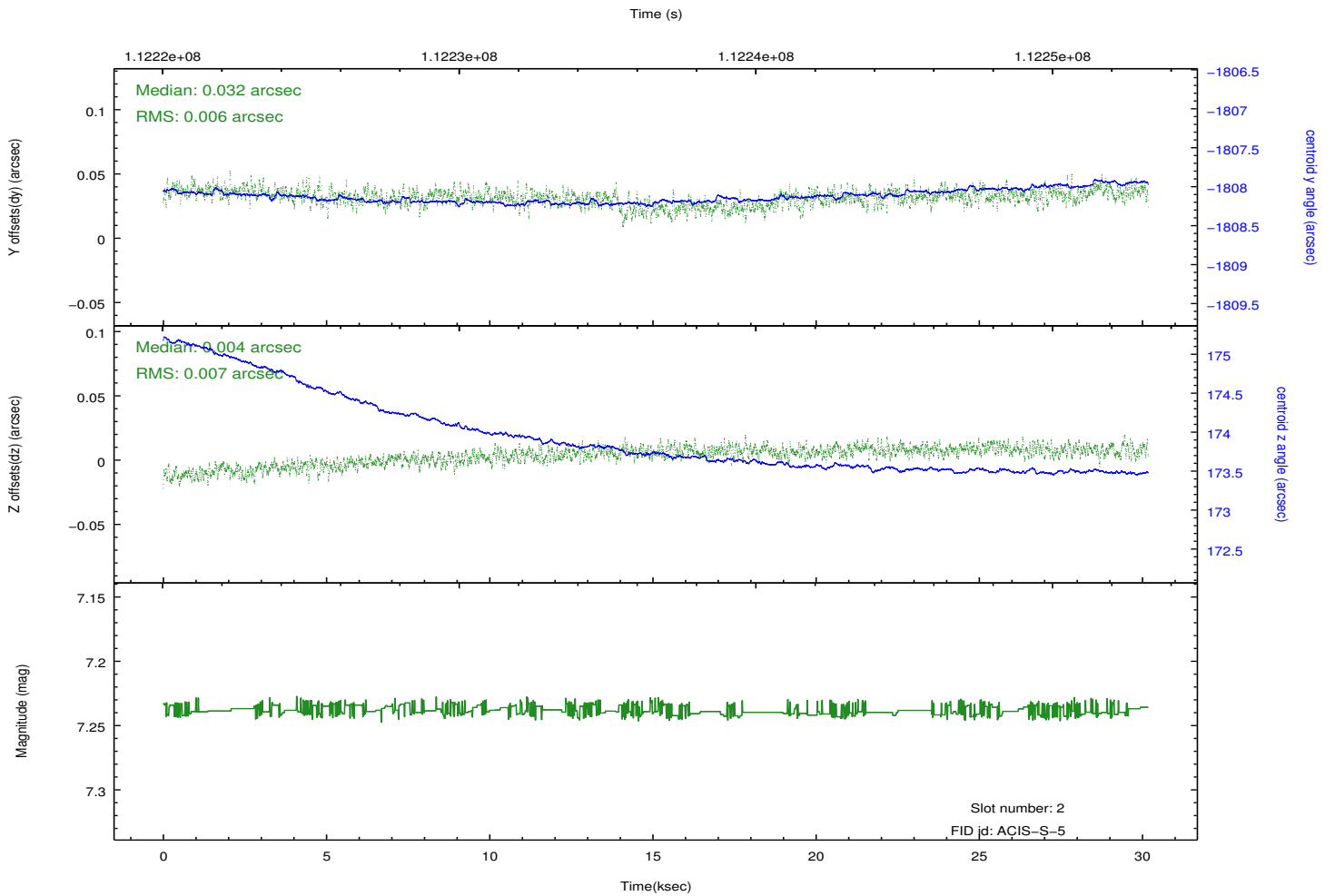
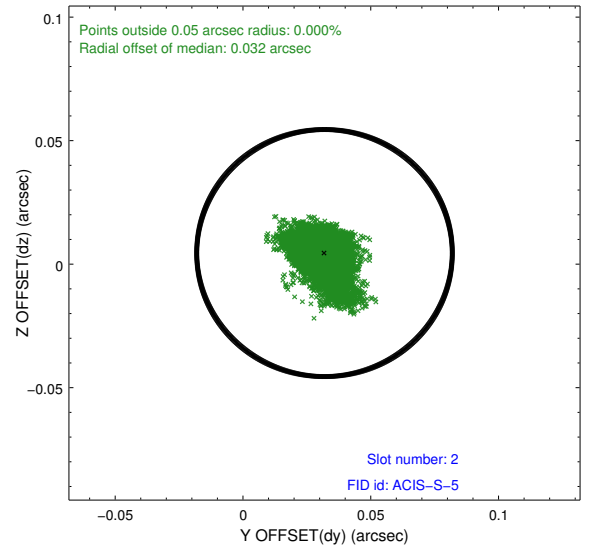
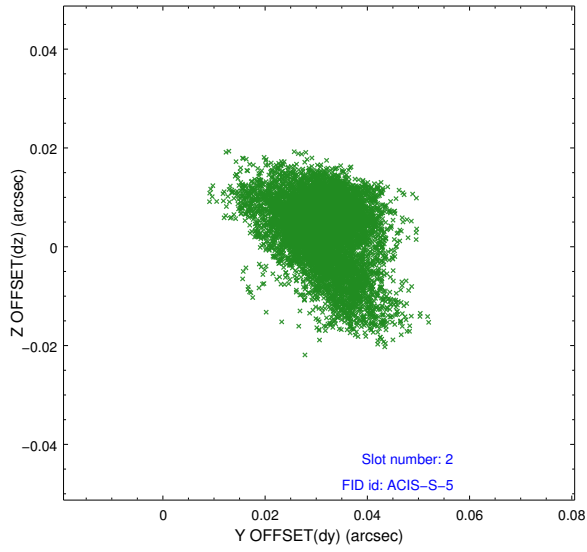
2.5.1 Slot 0



2.5.2 Slot 1



2.5.3 Slot 2



A Summary

A.1 Status

V&V Scientist	Beth Sundheim
V&V Date (YYYY-MM-DD)	2012.09.24
V&V Edition	1
V&V Disposition and Status	OK
V&V Charge Time	30.166

A.2 Comments